

Data Path : Z:\VOASRV\HPCHEM1\MSVOA X\DATA\VX031620\  
 Data File : VX015304.D  
 Acq On : 16 Mar 2020 19:20  
 Operator : JC/SP  
 Sample : L1945-05  
 Misc : 5.0mL/MSVOA X/WATER  
 ALS Vial : 25 Sample Multiplier: 1

Instrument :  
 MSVOA\_X  
 ClientSampleId :  
 RE104D3-20200312

Integration Parameters: RTEINT.P  
 Integrator: RTE  
 Smoothing : ON Filtering: 5  
 Sampling : 1 Min Area: 3 % of largest Peak  
 Start Thrs: 0.2 Max Peaks: 100  
 Stop Thrs : 0 Peak Location: TOP

If leading or trailing edge < 100 prefer < Baseline drop else tangent >  
 Peak separation: 5

Method : Z:\VOASRV\HPCHEM1\MSVOA\_X\METHOD\82X030420W.M  
 Title : SW846 8260

Signal : TIC

| peak # | R.T. min | first scan | max scan | last scan | PK TY | peak height | corr. area | corr. % max. | % of total |
|--------|----------|------------|----------|-----------|-------|-------------|------------|--------------|------------|
| 1      | 1.070    | 26         | 30       | 42        | rBV   | 806792      | 992912     | 62.16%       | 10.163%    |
| 2      | 5.490    | 744        | 755      | 767       | rBV   | 176349      | 511449     | 32.02%       | 5.235%     |
| 3      | 5.654    | 770        | 782      | 793       | rVV   | 298630      | 830629     | 52.00%       | 8.502%     |
| 4      | 6.051    | 837        | 847      | 859       | rBV   | 195631      | 509404     | 31.89%       | 5.214%     |
| 5      | 6.849    | 969        | 978      | 990       | rBV   | 476668      | 1120642    | 70.16%       | 11.470%    |
| 6      | 7.203    | 1031       | 1036     | 1047      | rVB   | 7773        | 18486      | 1.16%        | 0.189%     |
| 7      | 8.709    | 1277       | 1283     | 1291      | rBV   | 1051951     | 1597359    | 100.00%      | 16.350%    |
| 8      | 10.111   | 1507       | 1513     | 1520      | rBV   | 1052831     | 1455731    | 91.13%       | 14.900%    |
| 9      | 11.135   | 1675       | 1681     | 1689      | rBV   | 919760      | 1188749    | 74.42%       | 12.167%    |
| 10     | 12.074   | 1830       | 1835     | 1843      | rVB   | 1288710     | 1544686    | 96.70%       | 15.810%    |

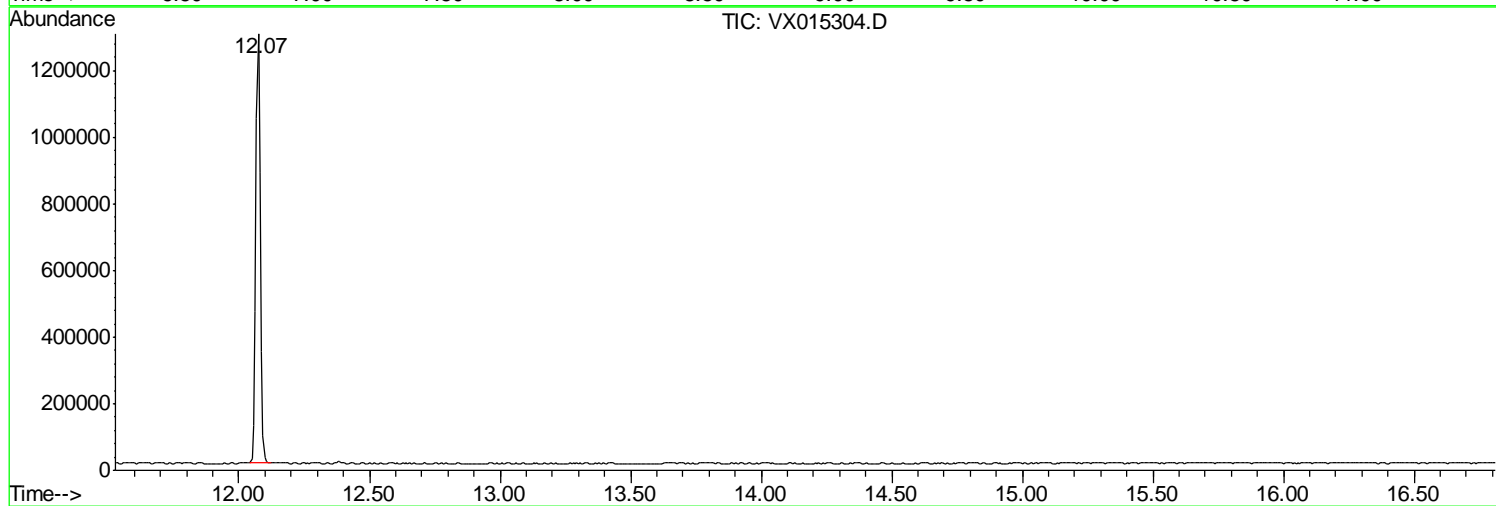
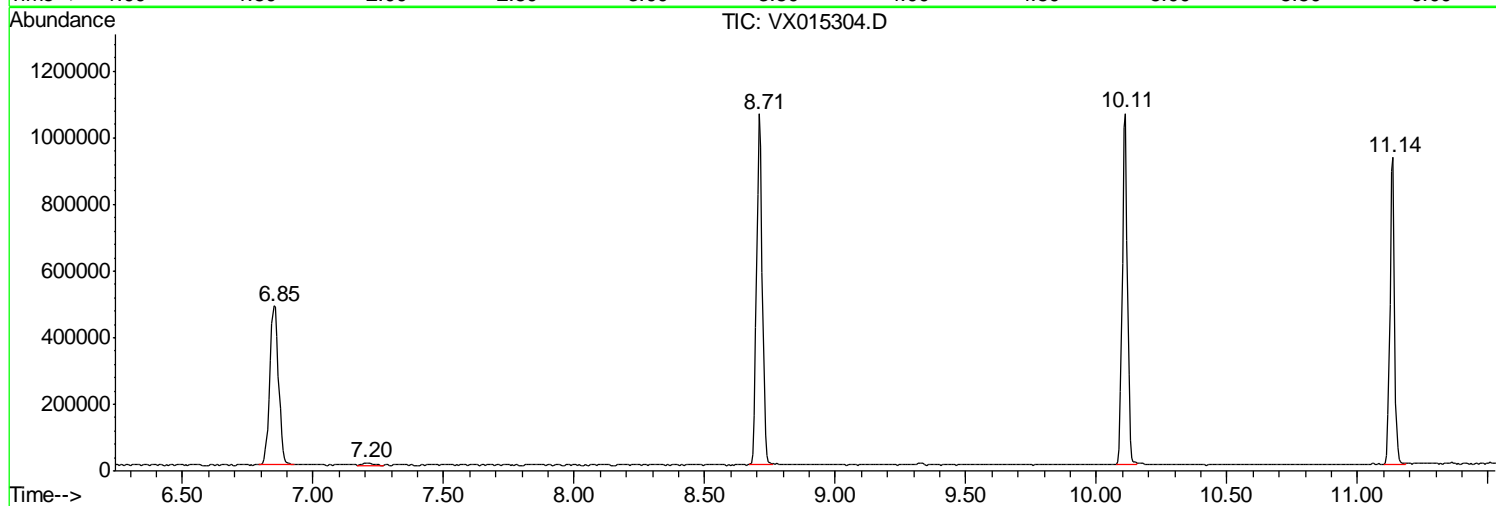
Sum of corrected areas: 9770047

Data Path : Z:\VOASRV\HPCHEM1\MSVOA X\DATA\VX031620\  
Data File : VX015304.D  
Acq On : 16 Mar 2020 19:20  
Operator : JC/SP  
Sample : L1945-05  
Misc : 5.0mL/MSVOA X/WATER  
ALS Vial : 25 Sample Multiplier: 1

Instrument :  
MSVOA\_X  
ClientSampleId :  
RE104D3-20200312

Quant Method : Z:\VOASRV\HPCHEM1\MSVOA\_X\METHOD\82X030420W.M  
Quant Title : SW846 8260

TIC Library : C:\DATABASE\NIST11.L  
TIC Integration Parameters: LSCINT.P



Data Path : Z:\VOASRV\HPCHEM1\MSVOA\_X\DATA\VX031620\  
Data File : VX015304.D  
Acq On : 16 Mar 2020 19:20  
Operator : JC/SP  
Sample : L1945-05  
Misc : 5.0mL/MSVOA\_X/WATER  
ALS Vial : 25 Sample Multiplier: 1

Instrument :  
MSVOA\_X  
ClientSampleId :  
RE104D3-20200312

Quant Method : Z:\VOASRV\HPCHEM1\MSVOA\_X\METHOD\82X030420W.M  
Quant Title : SW846 8260

TIC Library : C:\DATABASE\NIST11.L  
TIC Integration Parameters: LSCINT.P

No Library Search Compounds Detected

\*\*\*\*\*

Data Path : Z:\VOASRV\HPCHEM1\MSVOA\_X\DATA\VX031620\  
Data File : VX015304.D  
Acq On : 16 Mar 2020 19:20  
Operator : JC/SP  
Sample : L1945-05  
Misc : 5.0mL/MSVOA\_X/WATER  
ALS Vial : 25 Sample Multiplier: 1

Instrument :  
MSVOA\_X  
ClientSampleId :  
RE104D3-20200312

Quant Method : Z:\VOASRV\HPCHEM1\MSVOA\_X\METHOD\82X030420W.M  
Quant Title : SW846 8260

TIC Library : C:\DATABASE\NIST11.L  
TIC Integration Parameters: LSCINT.P

| TIC Top Hit name | RT | EstConc | Units | Response | --Internal Standard-- |    |      |      |
|------------------|----|---------|-------|----------|-----------------------|----|------|------|
|                  |    |         |       |          | #                     | RT | Resp | Conc |

---