

Data Path : Z:\voasrv\HPCHEM1\MSVOA_X\Data\VX031623\
 Data File : VX034534.D
 Acq On : 16 Mar 2023 10:40
 Operator : JC/MD
 Sample : VX0316WBL01
 Misc : 5.0mL/MSVOA_X/WATER
 ALS Vial : 4 Sample Multiplier: 1

Instrument :
 MSVOA_X
 ClientSampleId :
 VX0316WBL01

Quant Time: Mar 17 06:20:36 2023
 Quant Method : Z:\voasrv\HPCHEM1\MSVOA_X\Method\82X031023W.M
 Quant Title : SW846 8260
 QLast Update : Mon Mar 13 10:29:32 2023
 Response via : Initial Calibration

Compound	R.T.	QIon	Response	Conc	Units	Dev(Min)

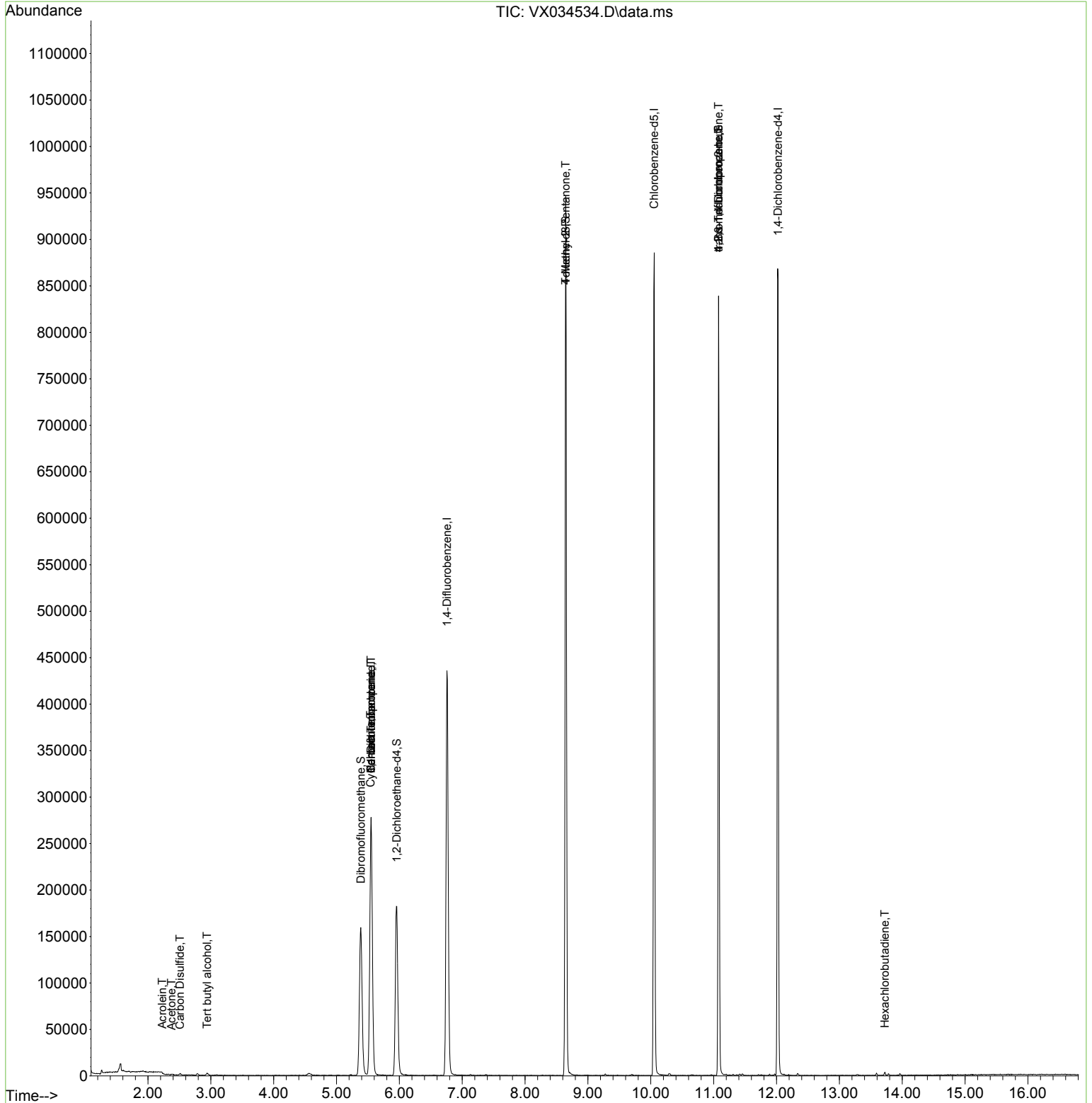
Internal Standards						
1) Pentafluorobenzene	5.550	168	256998	50.000	ug/l	0.00
34) 1,4-Difluorobenzene	6.757	114	440204	50.000	ug/l	0.00
63) Chlorobenzene-d5	10.055	117	389716	50.000	ug/l	0.00
72) 1,4-Dichlorobenzene-d4	12.024	152	175901	50.000	ug/l	0.00
System Monitoring Compounds						
33) 1,2-Dichloroethane-d4	5.958	65	176940	47.325	ug/l	0.01
Spiked Amount	50.000	Range 78 - 117	Recovery	=	94.660%	
35) Dibromofluoromethane	5.385	113	138339	47.597	ug/l	0.00
Spiked Amount	50.000	Range 75 - 124	Recovery	=	95.200%	
50) Toluene-d8	8.647	98	529598	48.811	ug/l	0.00
Spiked Amount	50.000	Range 92 - 112	Recovery	=	97.620%	
62) 4-Bromofluorobenzene	11.079	95	210937	48.131	ug/l	0.00
Spiked Amount	50.000	Range 83 - 123	Recovery	=	96.260%	
Target Compounds						
					Qvalue	
3) Chloromethane	1.288	50	224	Below Cal	#	42
11) Tert butyl alcohol	2.941	59	1404	1.803	ug/l #	73
13) Acrolein	2.227	56	250	0.406	ug/l	87
16) Acetone	2.374	43	902	0.512	ug/l	95
17) Carbon Disulfide	2.508	76	1726	0.218	ug/l	98
31) Cyclohexane	5.544	56	6073	1.158	ug/l #	1
36) 1,1-Dichloropropene	5.550	75	21978	4.923	ug/l #	51
38) Carbon Tetrachloride	5.550	117	26277	5.917	ug/l #	15
51) 4-Methyl-2-Pentanone	8.647	43	2777	0.579	ug/l #	1
76) 1,2,3-Trichloropropane	11.079	75	111073	27.501	ug/l #	34
81) trans-1,4-Dichloro-2-b...	11.079	75	111073	74.398	ug/l #	8
94) Hexachlorobutadiene	13.725	225	526	0.338	ug/l	86

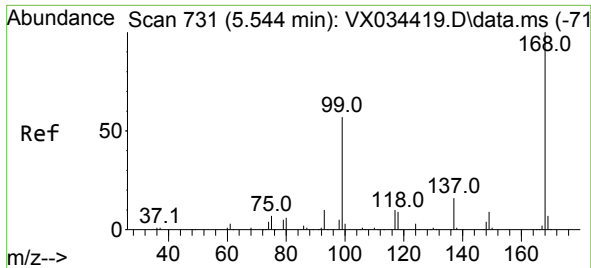
(#) = qualifier out of range (m) = manual integration (+) = signals summed

Data Path : Z:\voasrv\HPCHEM1\MSVOA_X\Data\VX031623\
 Data File : VX034534.D
 Acq On : 16 Mar 2023 10:40
 Operator : JC/MD
 Sample : VX0316WBL01
 Misc : 5.0mL/MSVOA_X/WATER
 ALS Vial : 4 Sample Multiplier: 1

Instrument :
 MSVOA_X
 ClientSampleId :
 VX0316WBL01

Quant Time: Mar 17 06:20:36 2023
 Quant Method : Z:\voasrv\HPCHEM1\MSVOA_X\Method\82X031023W.M
 Quant Title : SW846 8260
 QLast Update : Mon Mar 13 10:29:32 2023
 Response via : Initial Calibration

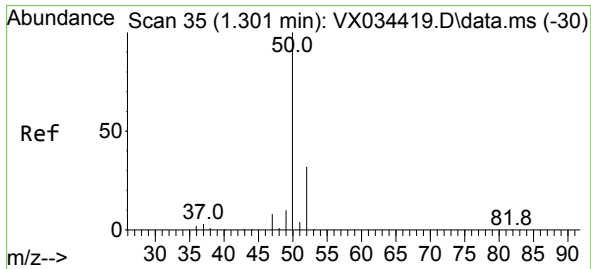
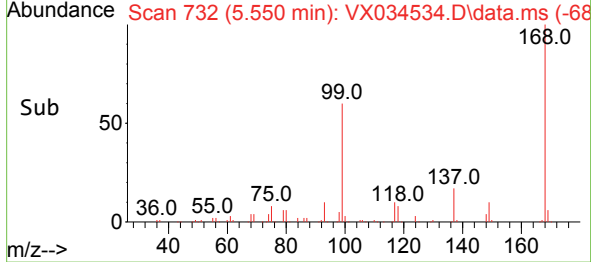
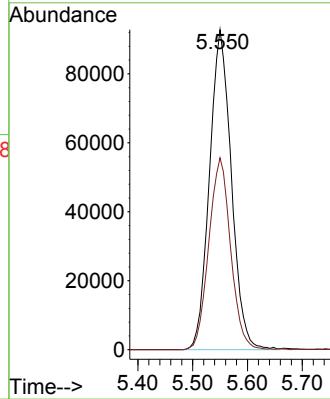
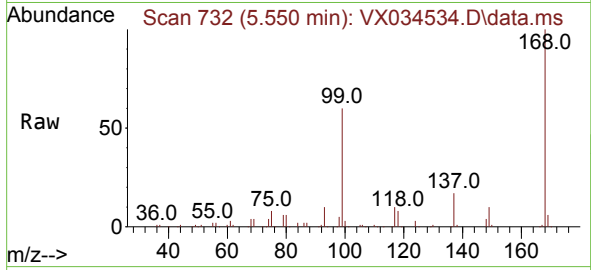




#1
 Pentafluorobenzene
 Concen: 50.000 ug/l
 RT: 5.550 min Scan# 71
 Delta R.T. 0.006 min
 Lab File: VX034534.D
 Acq: 16 Mar 2023 10:40

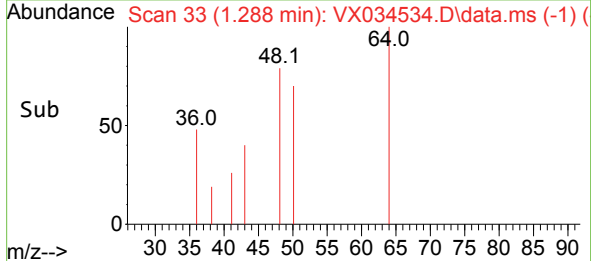
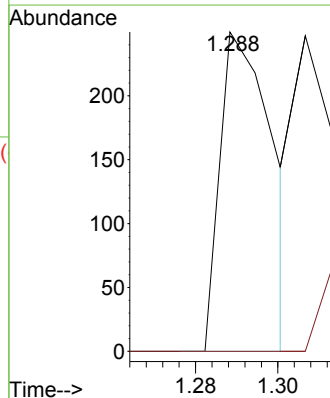
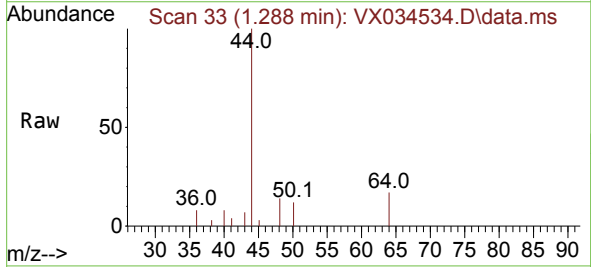
Instrument :
 MSVOA_X
 ClientSampleId :
 VX0316WBL01

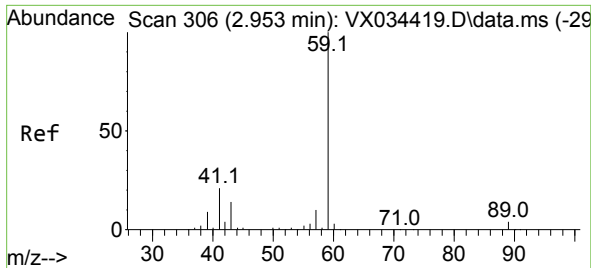
Tgt Ion:168 Resp: 256998
 Ion Ratio Lower Upper
 168 100
 99 59.9 45.7 68.5



#3
 Chloromethane
 Concen: Below Cal
 RT: 1.288 min Scan# 33
 Delta R.T. -0.013 min
 Lab File: VX034534.D
 Acq: 16 Mar 2023 10:40

Tgt Ion: 50 Resp: 224
 Ion Ratio Lower Upper
 50 100
 52 0.0 25.9 38.9#

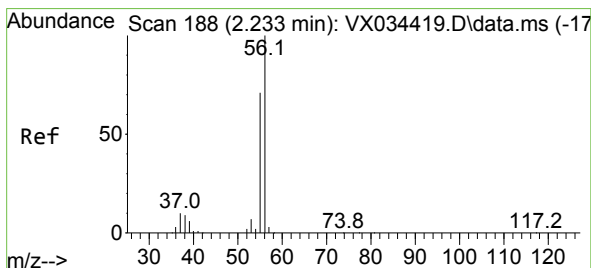
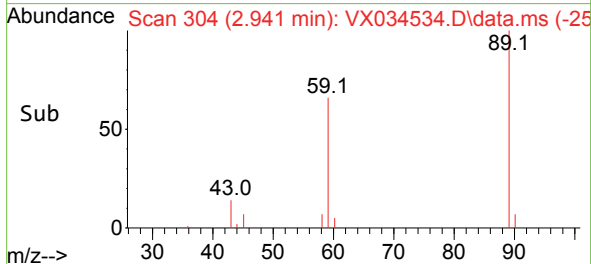
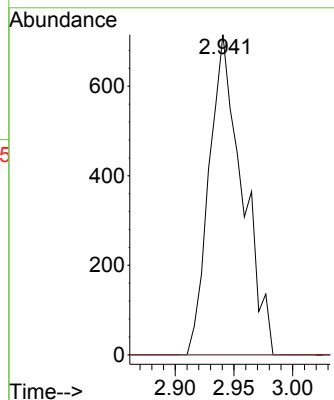
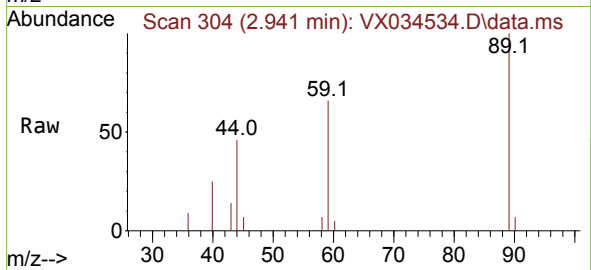




#11
 Tert butyl alcohol
 Concen: 1.803 ug/l
 RT: 2.941 min Scan# 306
 Delta R.T. -0.012 min
 Lab File: VX034534.D
 Acq: 16 Mar 2023 10:40

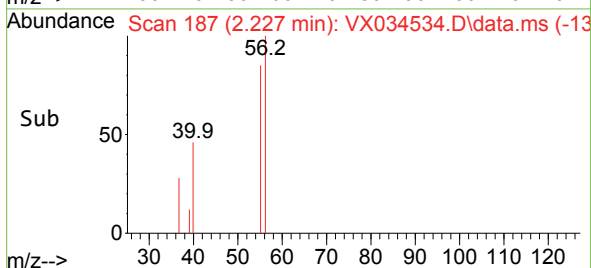
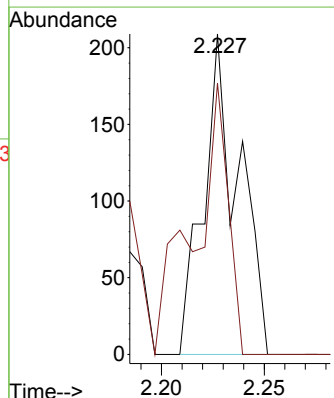
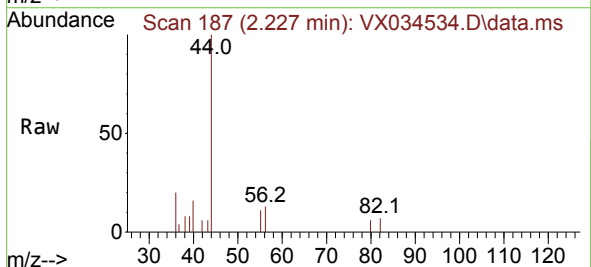
Instrument : MSVOA_X
 ClientSampleId : VX0316WBL01

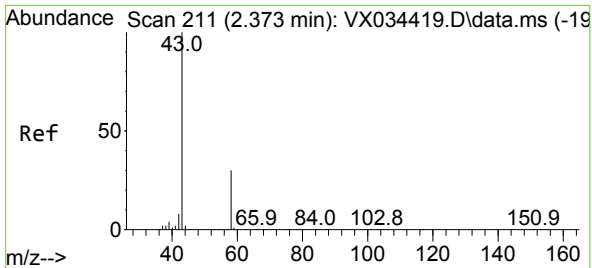
Tgt Ion: 59 Resp: 1404
 Ion Ratio Lower Upper
 59 100
 57 0.0 8.1 12.1#



#13
 Acrolein
 Concen: 0.406 ug/l
 RT: 2.227 min Scan# 187
 Delta R.T. -0.006 min
 Lab File: VX034534.D
 Acq: 16 Mar 2023 10:40

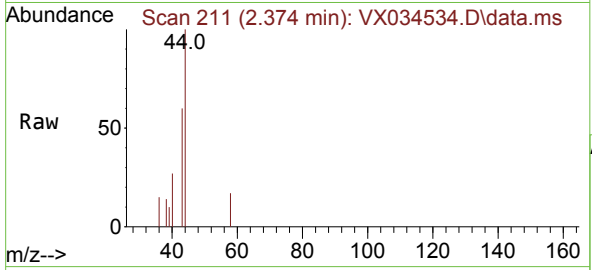
Tgt Ion: 56 Resp: 250
 Ion Ratio Lower Upper
 56 100
 55 81.2 56.6 85.0



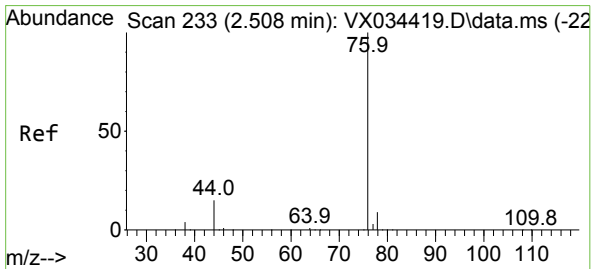
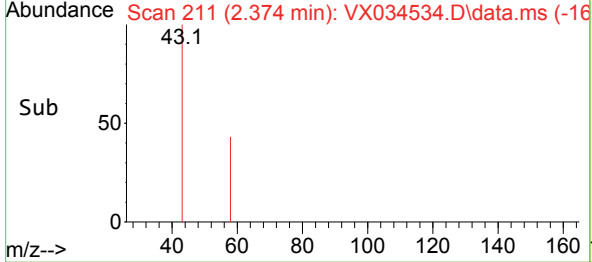
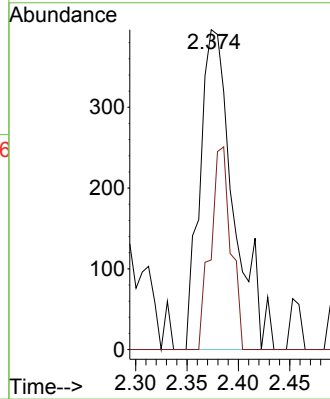


#16
 Acetone
 Concen: 0.512 ug/l
 RT: 2.374 min Scan# 211
 Delta R.T. 0.000 min
 Lab File: VX034534.D
 Acq: 16 Mar 2023 10:40

Instrument : MSVOA_X
 ClientSampleId : VX0316WBL01

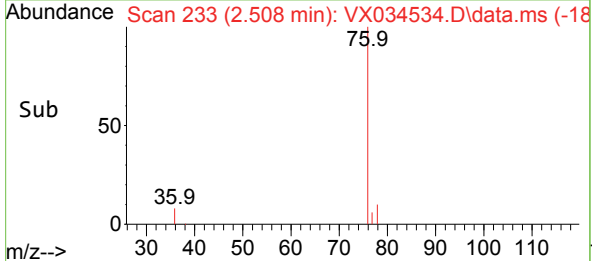
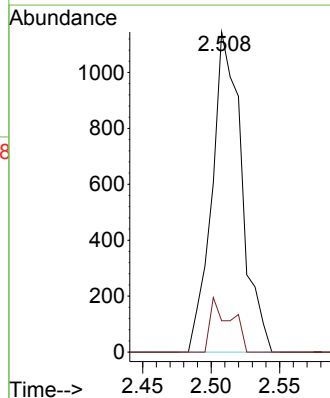
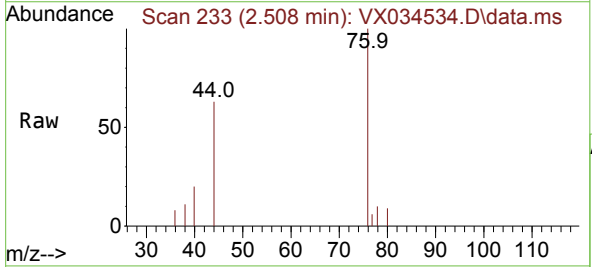


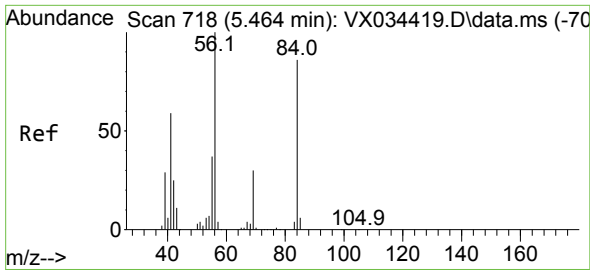
Tgt Ion: 43 Resp: 902
 Ion Ratio Lower Upper
 43 100
 58 28.0 24.7 37.1



#17
 Carbon Disulfide
 Concen: 0.218 ug/l
 RT: 2.508 min Scan# 233
 Delta R.T. -0.000 min
 Lab File: VX034534.D
 Acq: 16 Mar 2023 10:40

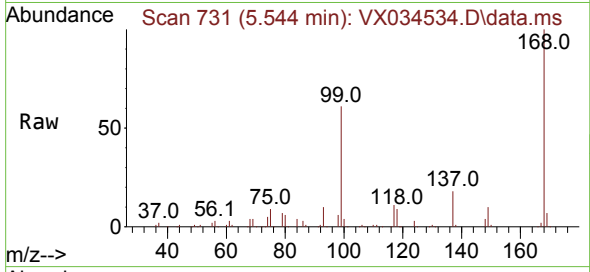
Tgt Ion: 76 Resp: 1726
 Ion Ratio Lower Upper
 76 100
 78 9.8 7.2 10.8



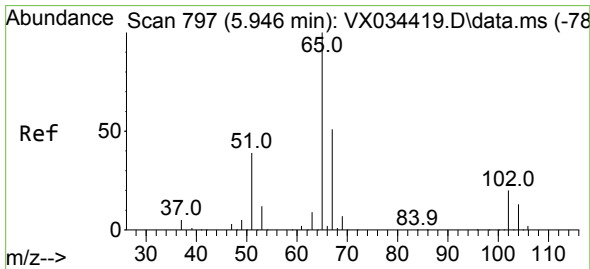
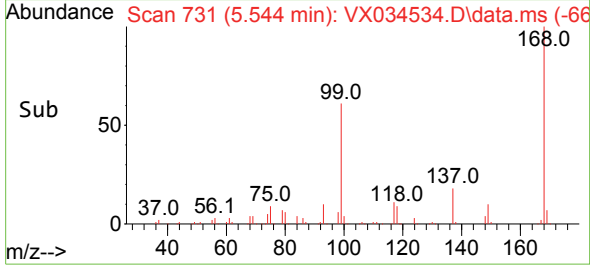
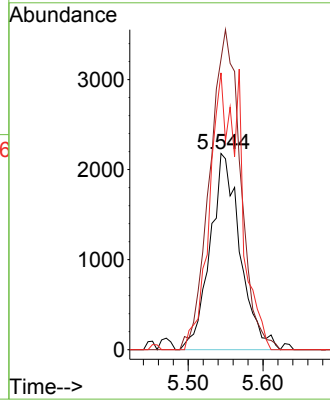


#31
 Cyclohexane
 Concen: 1.158 ug/l
 RT: 5.544 min Scan# 718
 Delta R.T. 0.079 min
 Lab File: VX034534.D
 Acq: 16 Mar 2023 10:40

Instrument : MSVOA_X
 ClientSampleId : VX0316WBL01

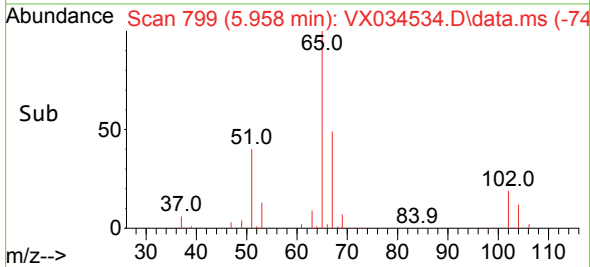
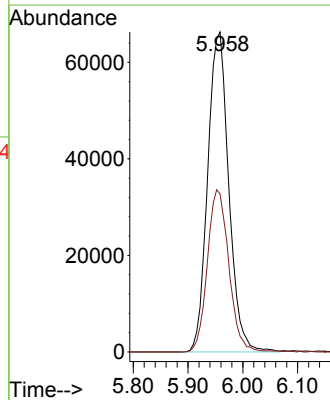
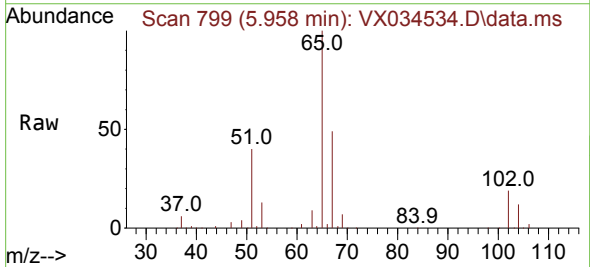


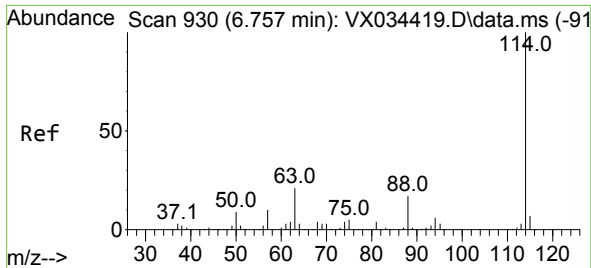
Tgt Ion: 56 Resp: 6073
 Ion Ratio Lower Upper
 56 100
 69 148.0 23.7 35.5#
 84 141.1 68.5 102.7#



#33
 1,2-Dichloroethane-d4
 Concen: 47.325 ug/l
 RT: 5.958 min Scan# 799
 Delta R.T. 0.012 min
 Lab File: VX034534.D
 Acq: 16 Mar 2023 10:40

Tgt Ion: 65 Resp: 176940
 Ion Ratio Lower Upper
 65 100
 67 51.7 0.0 104.0

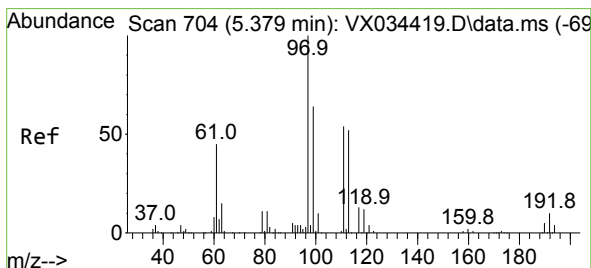
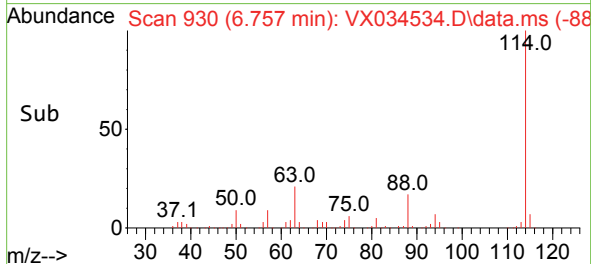
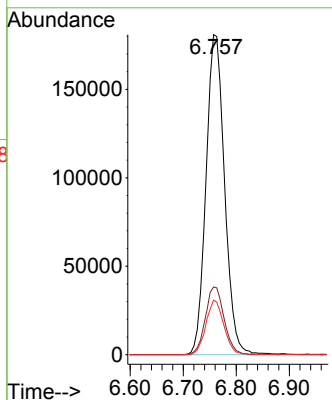
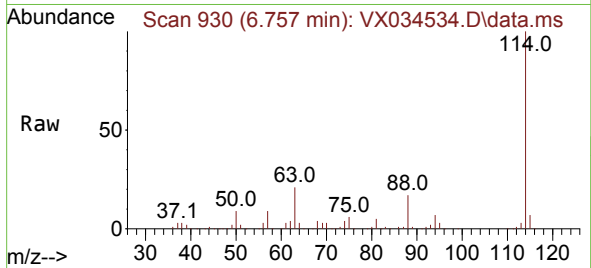




#34
 1,4-Difluorobenzene
 Concen: 50.000 ug/l
 RT: 6.757 min Scan# 91
 Delta R.T. 0.000 min
 Lab File: VX034534.D
 Acq: 16 Mar 2023 10:40

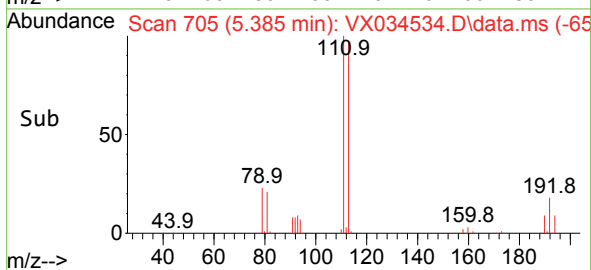
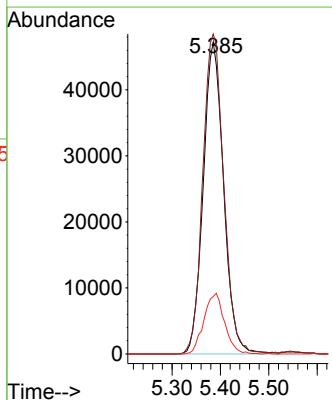
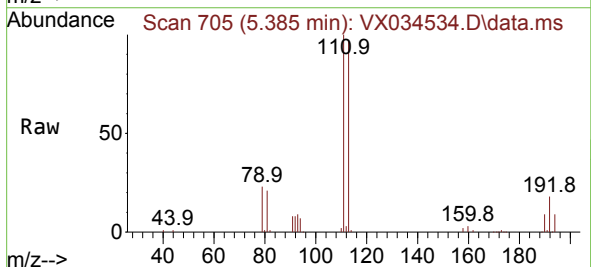
Instrument :
 MSVOA_X
 ClientSampleId :
 VX0316WBL01

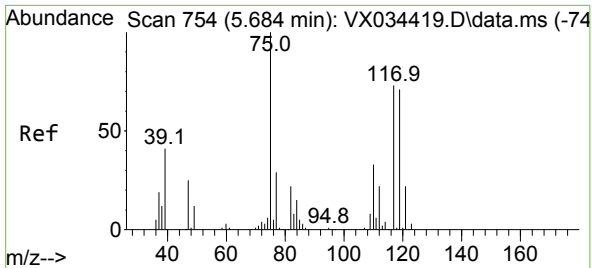
Tgt Ion	Resp	Lower	Upper
114	440204		
63	21.2	0.0	42.2
88	17.1	0.0	33.2



#35
 Dibromofluoromethane
 Concen: 47.597 ug/l
 RT: 5.385 min Scan# 705
 Delta R.T. 0.006 min
 Lab File: VX034534.D
 Acq: 16 Mar 2023 10:40

Tgt Ion	Resp	Lower	Upper
113	138339		
111	105.2	83.7	125.5
192	19.7	15.4	23.2

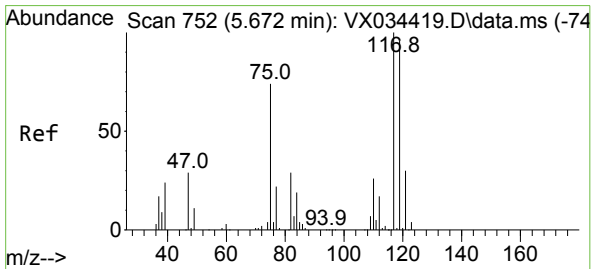
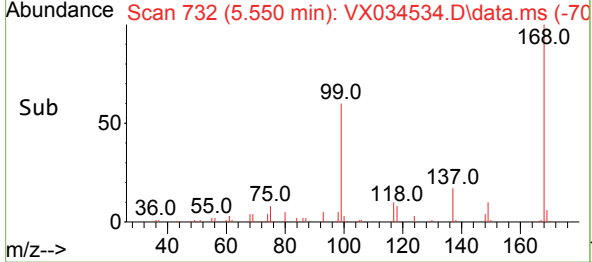
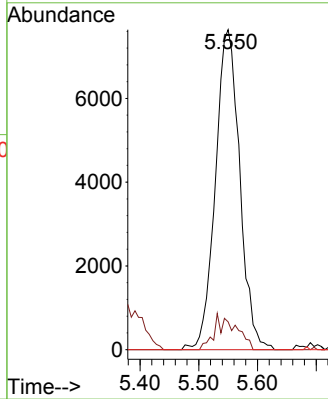
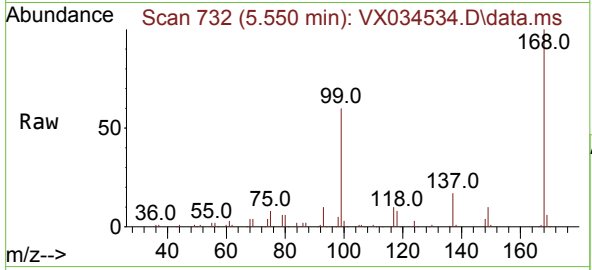




#36
 1,1-Dichloropropene
 Concen: 4.923 ug/l
 RT: 5.550 min Scan# 711
 Delta R.T. -0.134 min
 Lab File: VX034534.D
 Acq: 16 Mar 2023 10:40

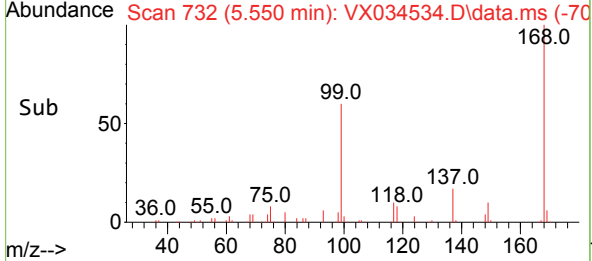
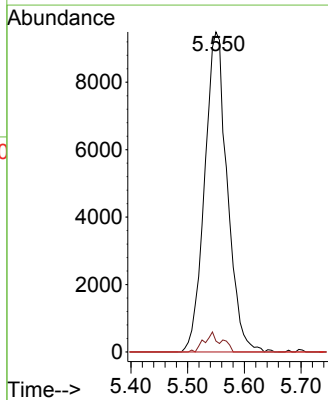
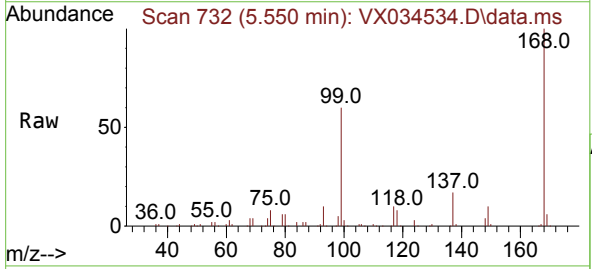
Instrument : MSVOA_X
 ClientSampleId : VX0316WBL01

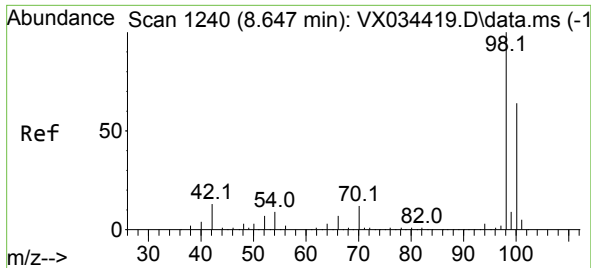
Tgt Ion	Resp	Lower	Upper
75	21978		
75	100		
110	9.9	17.5	52.5#
77	0.0	24.3	36.5#



#38
 Carbon Tetrachloride
 Concen: 5.917 ug/l
 RT: 5.550 min Scan# 732
 Delta R.T. -0.122 min
 Lab File: VX034534.D
 Acq: 16 Mar 2023 10:40

Tgt Ion	Resp	Lower	Upper
117	26277		
117	100		
119	3.4	76.6	114.8#
121	0.0	23.8	35.6#

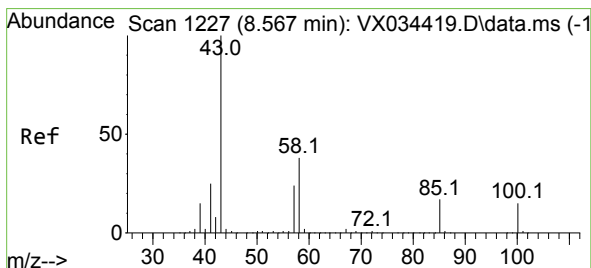
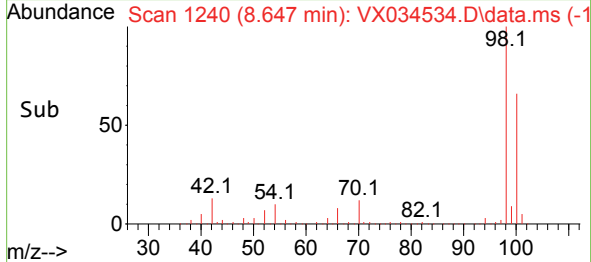
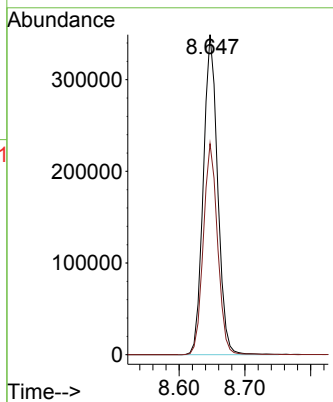
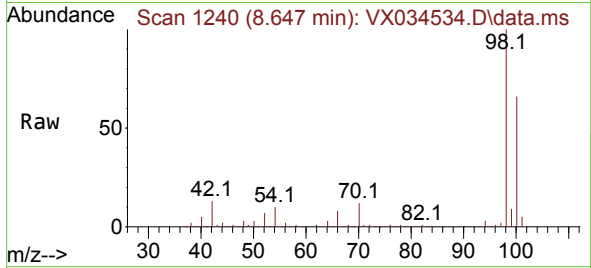




#50
 Toluene-d8
 Concen: 48.811 ug/l
 RT: 8.647 min Scan# 1240
 Delta R.T. 0.000 min
 Lab File: VX034534.D
 Acq: 16 Mar 2023 10:40

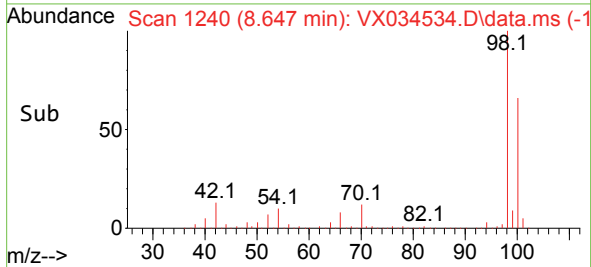
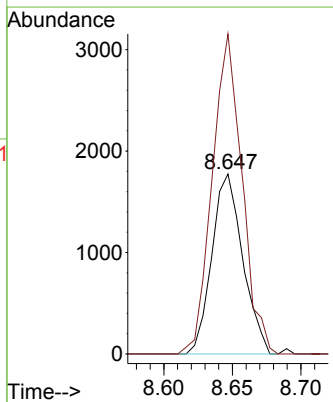
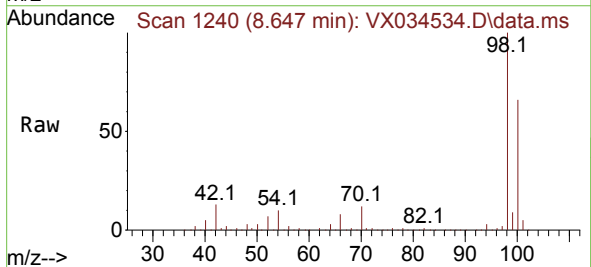
Instrument : MSVOA_X
 ClientSampleId : VX0316WBL01

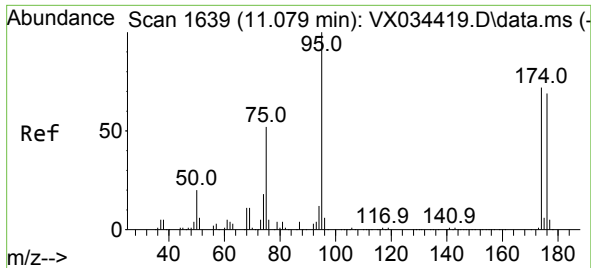
Tgt Ion: 98 Resp: 529598
 Ion Ratio Lower Upper
 98 100
 100 65.4 52.5 78.7



#51
 4-Methyl-2-Pentanone
 Concen: 0.579 ug/l
 RT: 8.647 min Scan# 1240
 Delta R.T. 0.079 min
 Lab File: VX034534.D
 Acq: 16 Mar 2023 10:40

Tgt Ion: 43 Resp: 2777
 Ion Ratio Lower Upper
 43 100
 58 171.8 30.6 46.0#

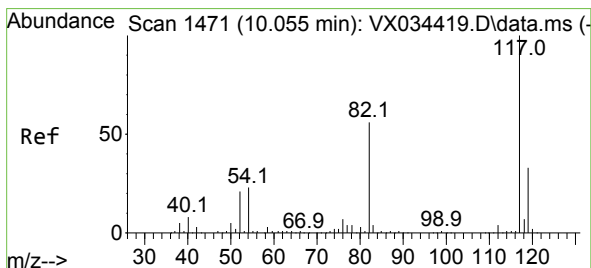
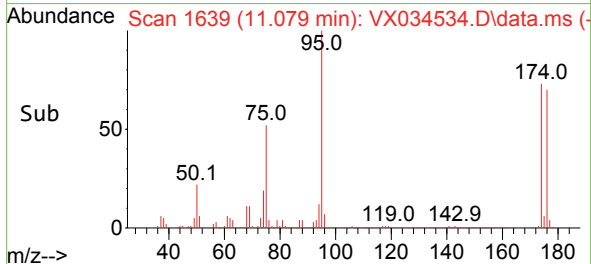
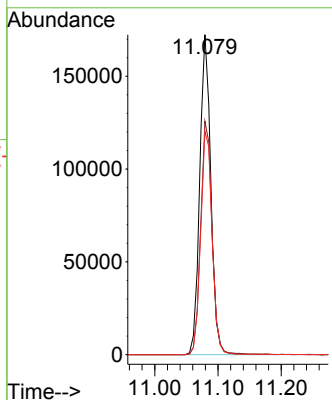
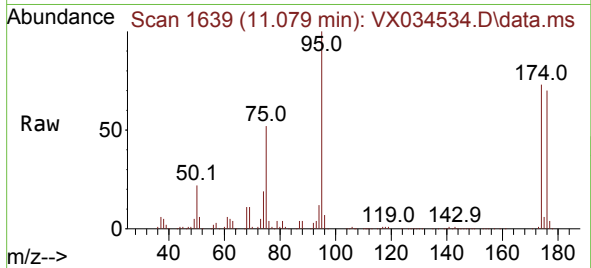




#62
 4-Bromofluorobenzene
 Concen: 48.131 ug/l
 RT: 11.079 min Scan# 1639
 Delta R.T. 0.000 min
 Lab File: VX034534.D
 Acq: 16 Mar 2023 10:40

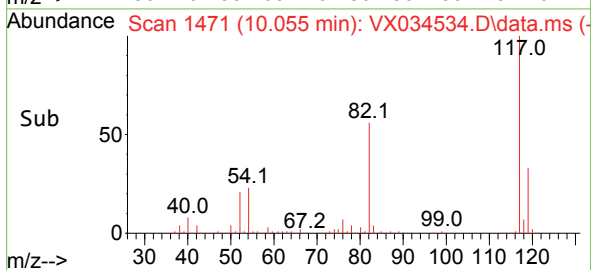
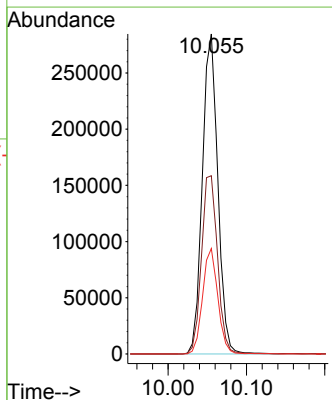
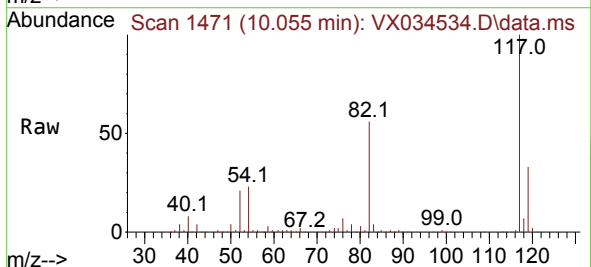
Instrument : MSVOA_X
 ClientSampleId : VX0316WBL01

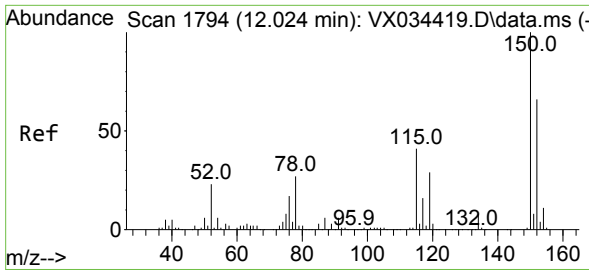
Tgt Ion	Resp	Ion Ratio	Lower	Upper
95	210937	100		
174	74.9	0.0	0.0	147.4
176	72.1	0.0	0.0	140.6



#63
 Chlorobenzene-d5
 Concen: 50.000 ug/l
 RT: 10.055 min Scan# 1471
 Delta R.T. 0.000 min
 Lab File: VX034534.D
 Acq: 16 Mar 2023 10:40

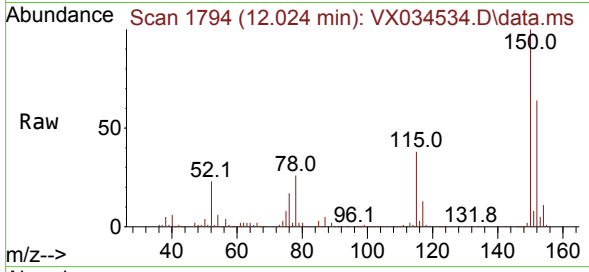
Tgt Ion	Resp	Ion Ratio	Lower	Upper
117	389716	100		
82	55.7	45.0	45.0	67.4
119	33.0	26.0	26.0	39.0



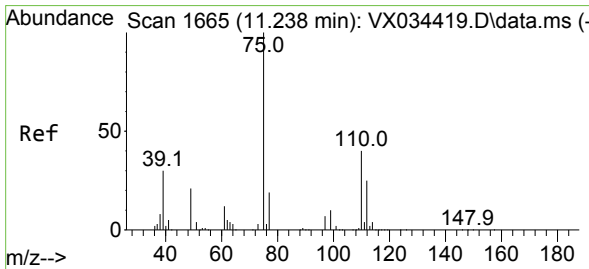
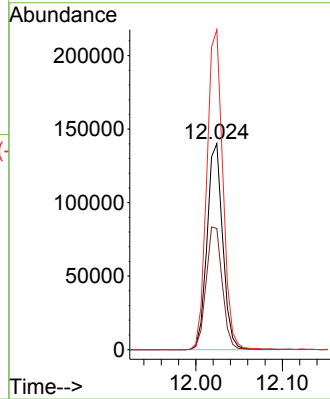
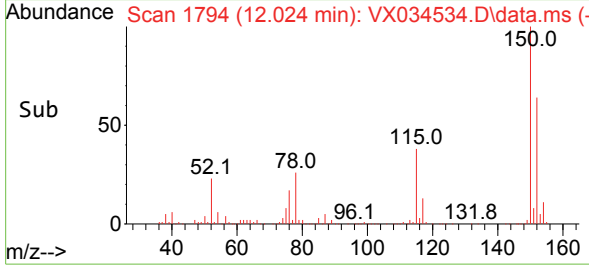


#72
 1,4-Dichlorobenzene-d4
 Concen: 50.000 ug/l
 RT: 12.024 min Scan# 1
 Delta R.T. 0.000 min
 Lab File: VX034534.D
 Acq: 16 Mar 2023 10:40

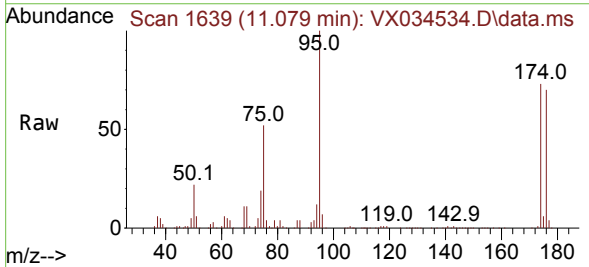
Instrument :
 MSVOA_X
 ClientSampleId :
 VX0316WBL01



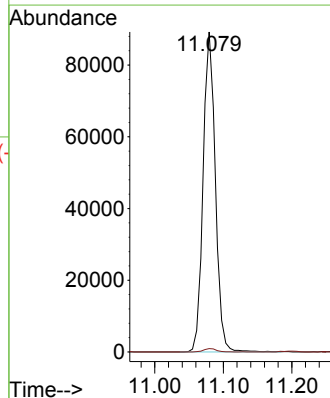
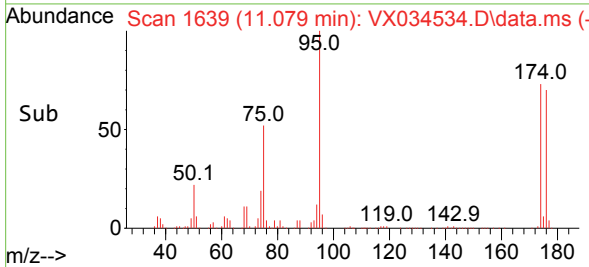
Tgt Ion:152 Resp: 175901
 Ion Ratio Lower Upper
 152 100
 115 61.5 45.0 135.0
 150 158.8 0.0 352.4

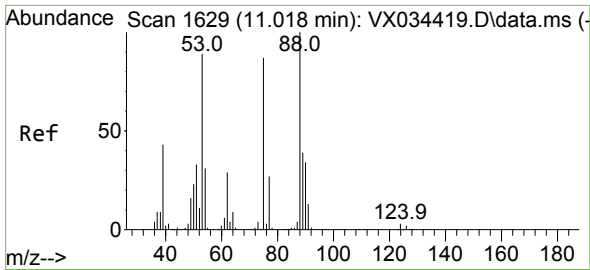


#76
 1,2,3-Trichloropropane
 Concen: 27.501 ug/l
 RT: 11.079 min Scan# 1639
 Delta R.T. -0.158 min
 Lab File: VX034534.D
 Acq: 16 Mar 2023 10:40



Tgt Ion: 75 Resp: 111073
 Ion Ratio Lower Upper
 75 100
 77 1.1 21.6 64.8#

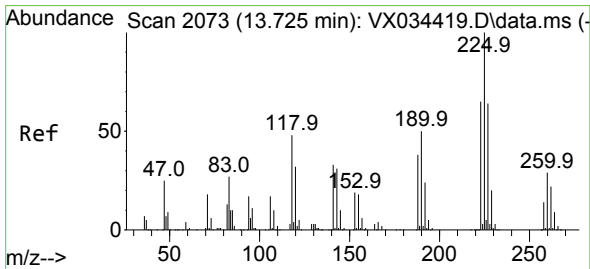
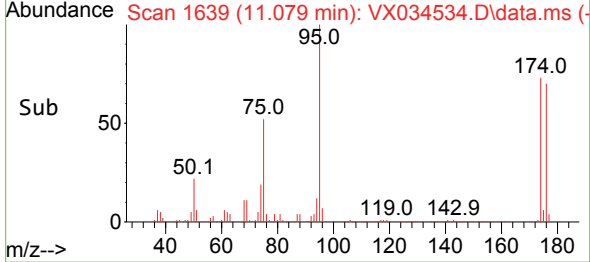
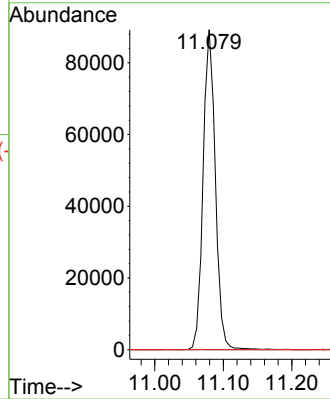
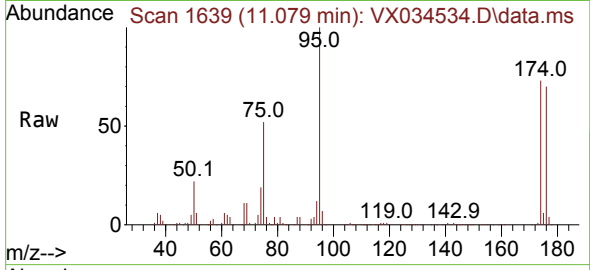




#81
 trans-1,4-Dichloro-2-butene
 Concen: 74.398 ug/l
 RT: 11.079 min Scan# 1
 Delta R.T. 0.061 min
 Lab File: VX034534.D
 Acq: 16 Mar 2023 10:40

Instrument :
 MSVOA_X
 ClientSampleId :
 VX0316WBL01

Tgt Ion: 75 Resp: 111073
 Ion Ratio Lower Upper
 75 100
 53 0.0 82.6 124.0#
 89 0.0 36.9 55.3#



#94
 Hexachlorobutadiene
 Concen: 0.338 ug/l
 RT: 13.725 min Scan# 2073
 Delta R.T. 0.000 min
 Lab File: VX034534.D
 Acq: 16 Mar 2023 10:40

Tgt Ion: 225 Resp: 526
 Ion Ratio Lower Upper
 225 100
 223 52.3 32.1 96.5
 227 53.4 31.8 95.4

