

Data Path : Z:\voasrv\HPCHEM1\MSVOA_X\Data\VX031822\
 Data File : VX027528.D
 Acq On : 18 Mar 2022 15:19
 Operator : JC/MD
 Sample : N2002-01
 Misc : 5.0mL/MSVOA_X/WATER
 ALS Vial : 13 Sample Multiplier: 1

Instrument :
 MSVOA_X
 ClientSampleId :

Quant Time: Mar 19 03:07:37 2022
 Quant Method : Z:\voasrv\HPCHEM1\MSVOA_X\Method\82X031722W.M
 Quant Title : SW846 8260
 QLast Update : Thu Mar 17 15:02:59 2022
 Response via : Initial Calibration

Compound	R.T.	QIon	Response	Conc	Units	Dev(Min)

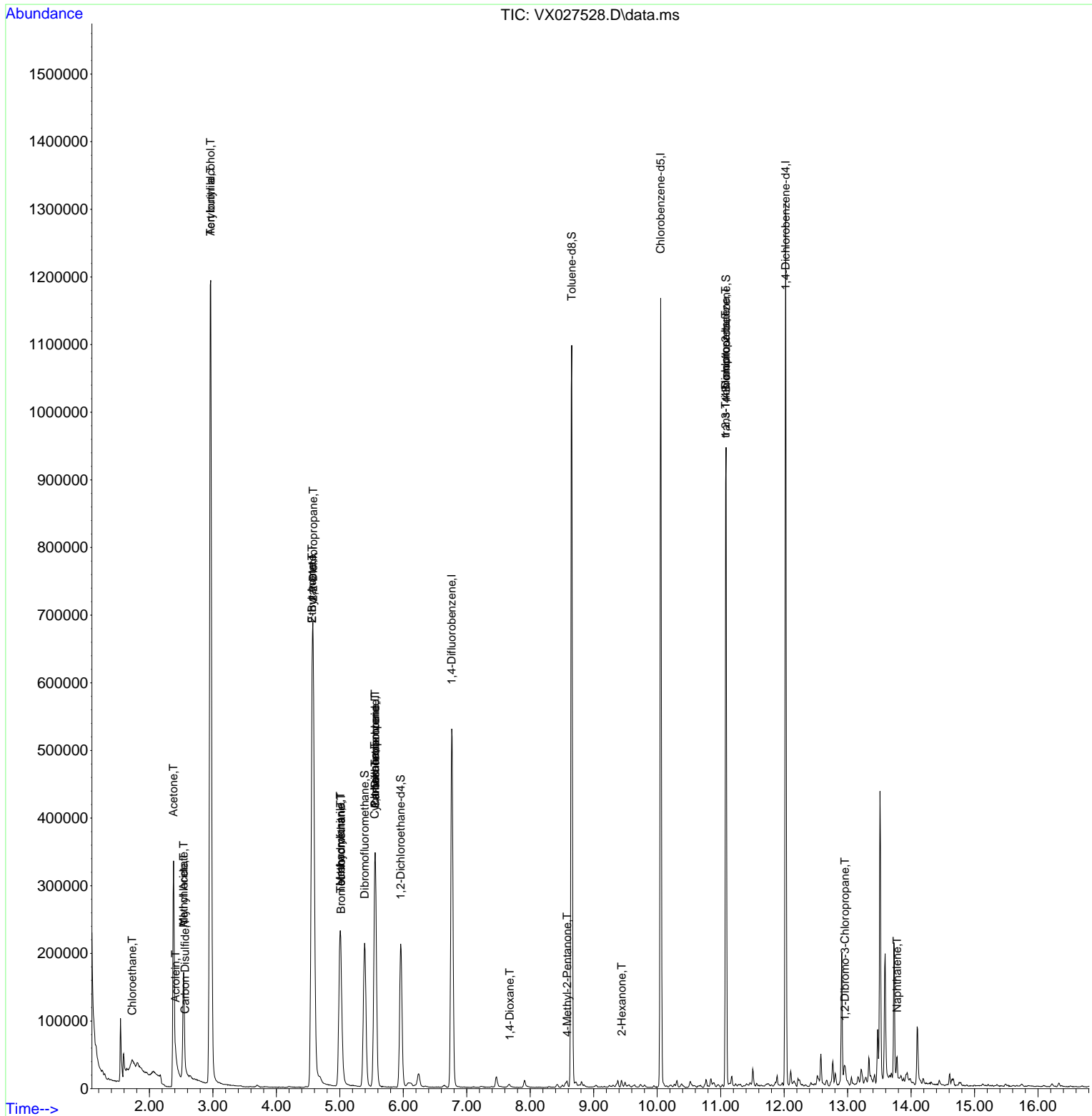
Internal Standards						
1) Pentafluorobenzene	5.556	168	344214	50.000	ug/l	0.00
34) 1,4-Difluorobenzene	6.763	114	571289	50.000	ug/l	0.00
63) Chlorobenzene-d5	10.055	117	538940	50.000	ug/l	0.00
72) 1,4-Dichlorobenzene-d4	12.024	152	270030	50.000	ug/l	0.00
System Monitoring Compounds						
33) 1,2-Dichloroethane-d4	5.958	65	209940	49.510	ug/l	0.00
Spiked Amount	50.000	Range 61 - 141	Recovery	=	99.020%	
35) Dibromofluoromethane	5.391	113	188510	51.287	ug/l	0.00
Spiked Amount	50.000	Range 69 - 133	Recovery	=	102.580%	
50) Toluene-d8	8.653	98	675369	48.557	ug/l	0.00
Spiked Amount	50.000	Range 65 - 126	Recovery	=	97.120%	
62) 4-Bromofluorobenzene	11.085	95	261533	51.158	ug/l	0.00
Spiked Amount	50.000	Range 58 - 135	Recovery	=	102.320%	
Target Compounds						
						Qvalue
5) Bromomethane	1.618	94	162	Below Cal	#	3
6) Chloroethane	1.727	64	130294	62.655	ug/l #	52
11) Tert butyl alcohol	2.965	59	1403679	1736.940	ug/l	100
13) Acrolein	2.410	56	6218	9.915	ug/l #	24
14) Allyl chloride	2.538	41	14592	2.917	ug/l #	59
15) Acrylonitrile	2.965	53	15369	8.365	ug/l #	23
16) Acetone	2.380	43	343754	198.885	ug/l	97
17) Carbon Disulfide	2.563	76	32112	3.948	ug/l	99
18) Methyl Acetate	2.538	43	39043	9.425	ug/l #	46
25) 2-Butanone	4.562	43	501125	192.709	ug/l	97
26) 2,2-Dichloropropane	4.580	77	39140	8.068	ug/l #	52
28) Bromochloromethane	5.019	49	947	0.395	ug/l #	7
29) Tetrahydrofuran	5.013	42	90388	54.183	ug/l	91
31) Cyclohexane	5.550	56	6457	1.226	ug/l #	1
36) 1,1-Dichloropropene	5.556	75	24284	4.835	ug/l #	50
37) Ethyl Acetate	4.562	43	501125	100.124	ug/l #	65
38) Carbon Tetrachloride	5.556	117	34509	6.005	ug/l #	16
41) Methacrylonitrile	5.007	41	83819	30.707	ug/l #	37
49) 1,4-Dioxane	7.677	88	3225	31.497	ug/l	91
51) 4-Methyl-2-Pentanone	8.580	43	6594	1.282	ug/l	86
58) 2-Chloroethyl Vinyl ether	8.269	63	22	Below Cal	#	45
59) 2-Hexanone	9.439	43	5451	1.376	ug/l	95
76) 1,2,3-Trichloropropane	11.079	75	126230	22.349	ug/l #	38
81) trans-1,4-Dichloro-2-b...	11.079	75	126230	67.875	ug/l #	15
92) 1,2-Dibromo-3-Chloropr...	12.957	75	286	0.200	ug/l #	1
95) Naphthalene	13.780	128	15712	0.840	ug/l	98

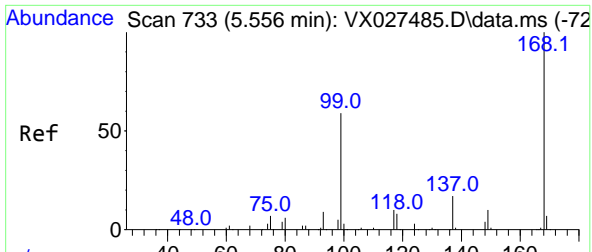
(#) = qualifier out of range (m) = manual integration (+) = signals summed

Data Path : Z:\voasrv\HPCHEM1\MSVOA_X\Data\VX031822\
 Data File : VX027528.D
 Acq On : 18 Mar 2022 15:19
 Operator : JC/MD
 Sample : N2002-01
 Misc : 5.0mL/MSVOA_X/WATER
 ALS Vial : 13 Sample Multiplier: 1

Instrument :
 MSVOA_X
 ClientSampleId :

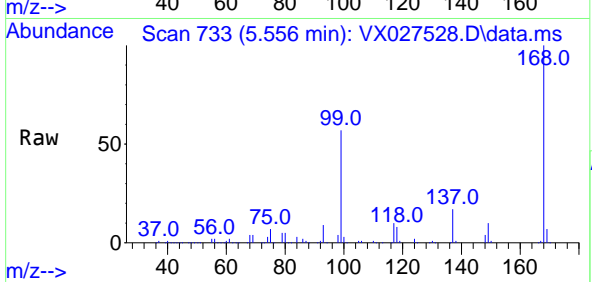
Quant Time: Mar 19 03:07:37 2022
 Quant Method : Z:\voasrv\HPCHEM1\MSVOA_X\Method\82X031722W.M
 Quant Title : SW846 8260
 QLast Update : Thu Mar 17 15:02:59 2022
 Response via : Initial Calibration



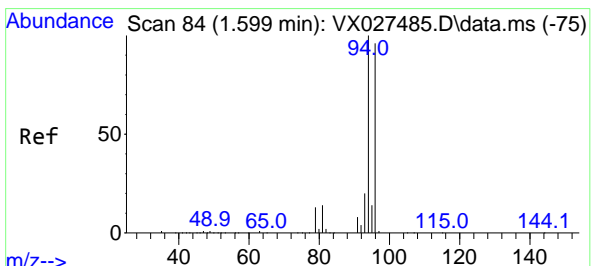
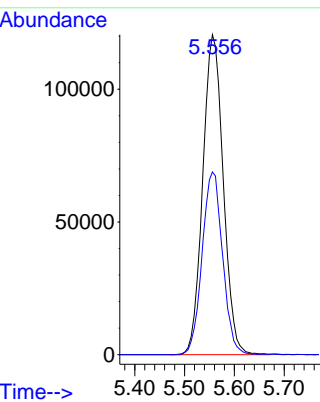
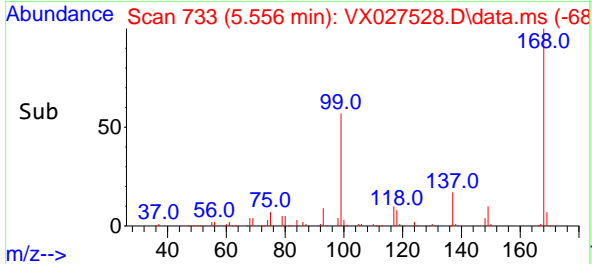


#1
 Pentafluorobenzene
 Concen: 50.000 ug/l
 RT: 5.556 min Scan# 71
 Delta R.T. -0.000 min
 Lab File: VX027528.D
 Acq: 18 Mar 2022 15:19

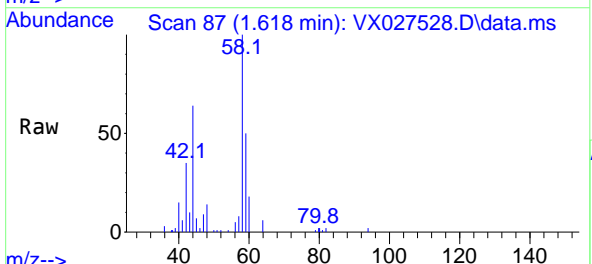
Instrument : MSVOA_X
 ClientSampleId :



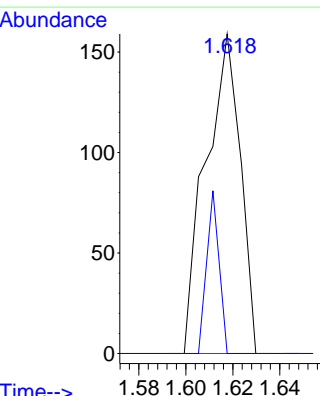
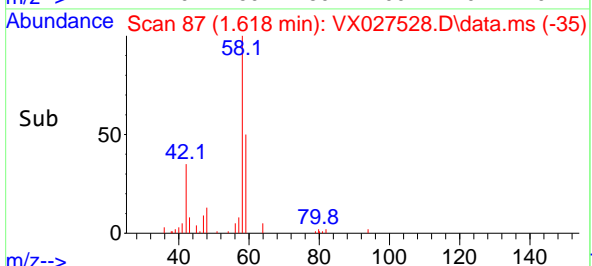
Tgt Ion:168 Resp: 344214
 Ion Ratio Lower Upper
 168 100
 99 57.1 41.7 62.5

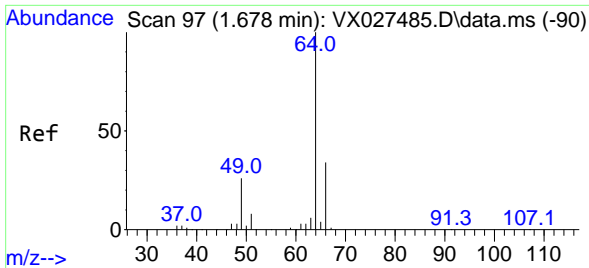


#5
 Bromomethane
 Concen: Below Cal
 RT: 1.618 min Scan# 87
 Delta R.T. 0.019 min
 Lab File: VX027528.D
 Acq: 18 Mar 2022 15:19



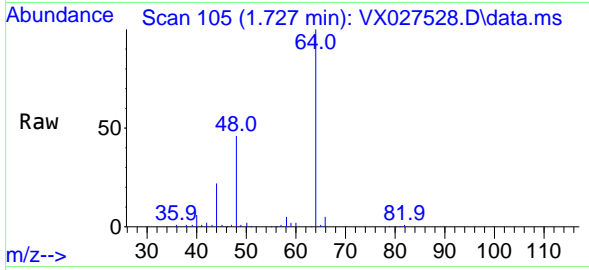
Tgt Ion: 94 Resp: 162
 Ion Ratio Lower Upper
 94 100
 96 0.0 75.3 112.9#



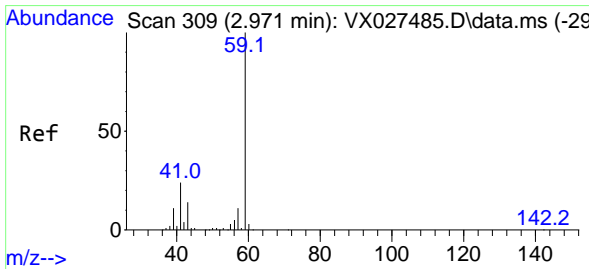
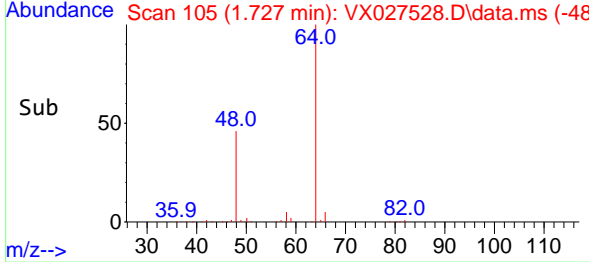
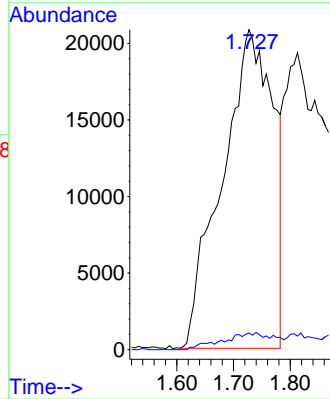


#6
 Chloroethane
 Concen: 62.655 ug/l
 RT: 1.727 min Scan# 105
 Delta R.T. 0.049 min
 Lab File: VX027528.D
 Acq: 18 Mar 2022 15:19

Instrument : MSVOA_X
 Client SampleId :

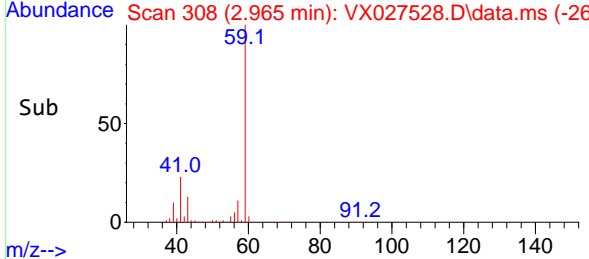
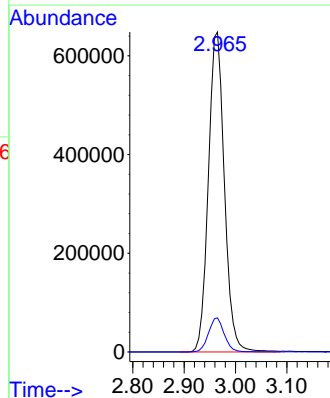
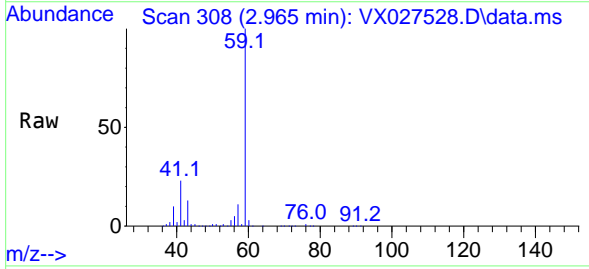


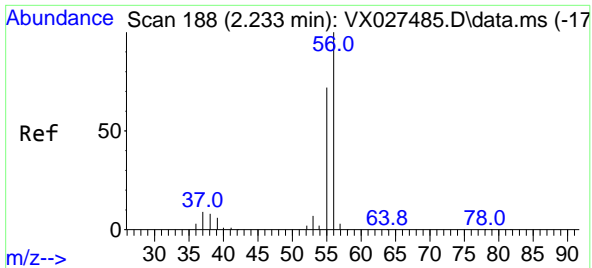
Tgt Ion: 64 Resp: 130294
 Ion Ratio Lower Upper
 64 100
 66 5.2 25.3 37.9#



#11
 Tert butyl alcohol
 Concen: 1736.940 ug/l
 RT: 2.965 min Scan# 308
 Delta R.T. -0.006 min
 Lab File: VX027528.D
 Acq: 18 Mar 2022 15:19

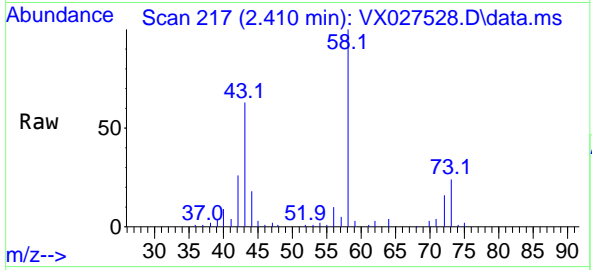
Tgt Ion: 59 Resp: 1403679
 Ion Ratio Lower Upper
 59 100
 57 10.5 8.3 12.5



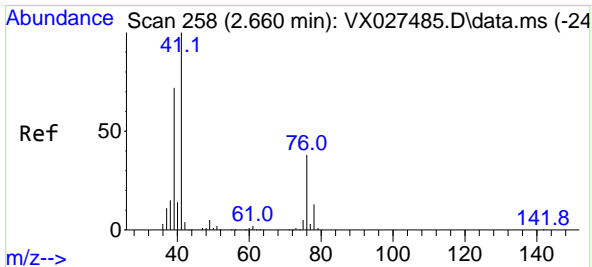
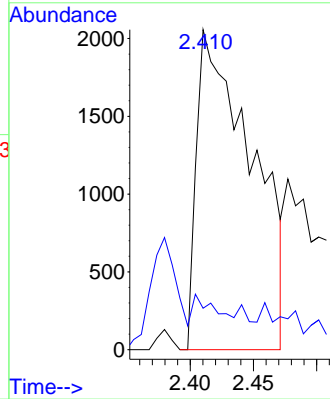
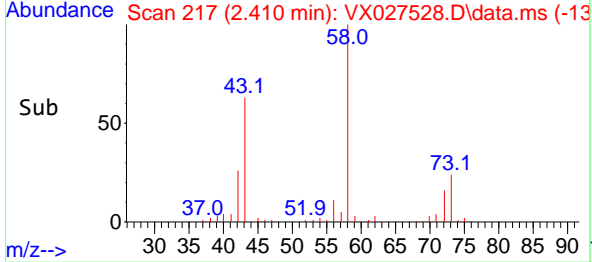


#13
 Acrolein
 Concen: 9.915 ug/l
 RT: 2.410 min Scan# 217
 Delta R.T. 0.177 min
 Lab File: VX027528.D
 Acq: 18 Mar 2022 15:19

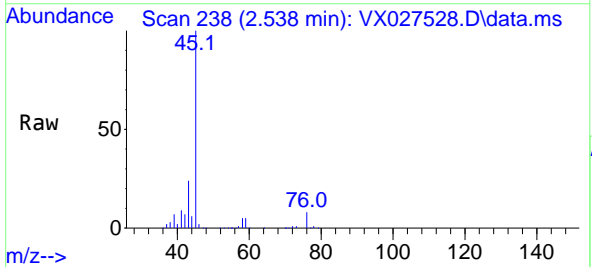
Instrument : MSVOA_X
 ClientSampleId :



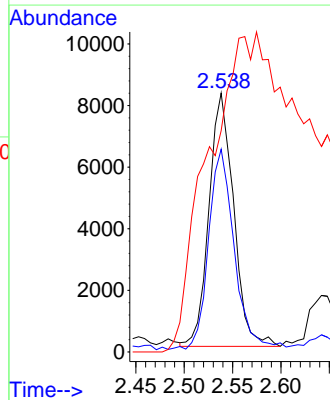
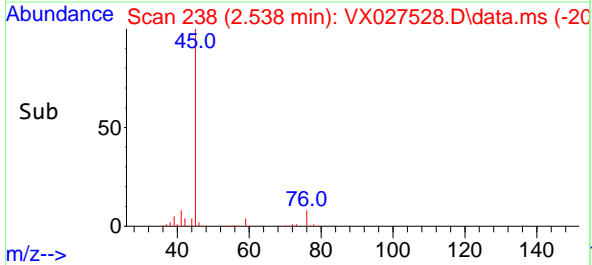
Tgt Ion: 56 Resp: 6218
 Ion Ratio Lower Upper
 56 100
 55 6.7 55.0 82.6#

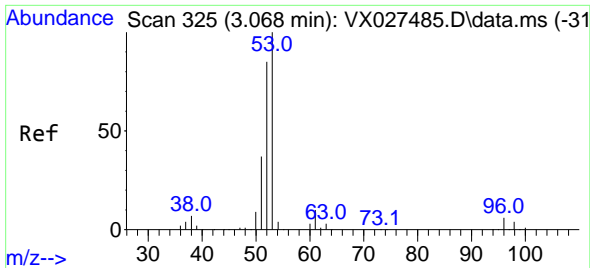


#14
 Allyl chloride
 Concen: 2.917 ug/l
 RT: 2.538 min Scan# 238
 Delta R.T. -0.122 min
 Lab File: VX027528.D
 Acq: 18 Mar 2022 15:19



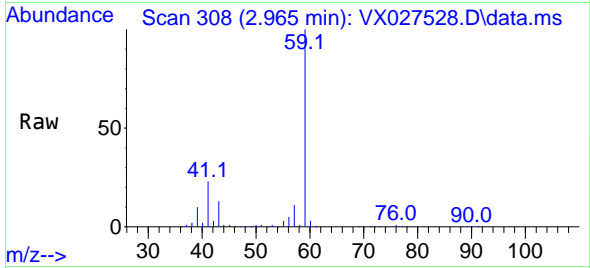
Tgt Ion: 41 Resp: 14592
 Ion Ratio Lower Upper
 41 100
 39 82.7 50.4 75.6#
 76 0.0 32.7 49.1#



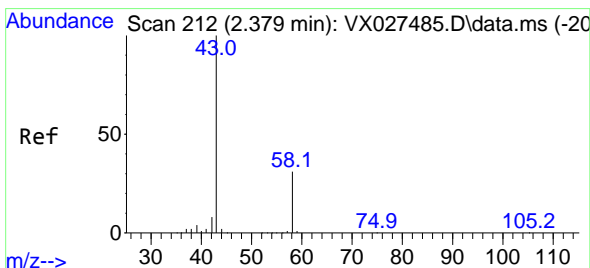
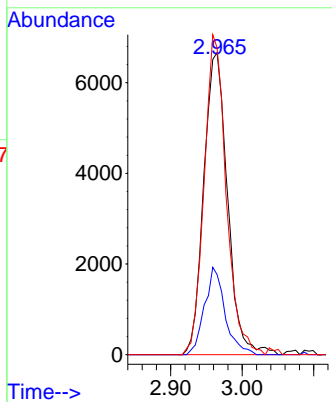
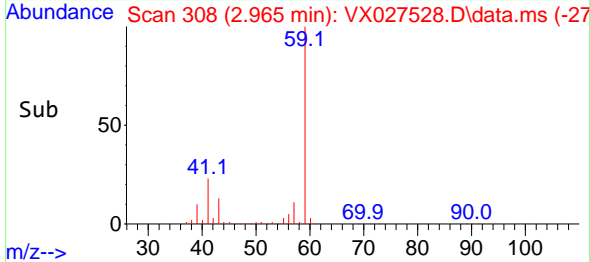


#15
 Acrylonitrile
 Concen: 8.365 ug/l
 RT: 2.965 min Scan# 308
 Delta R.T. -0.103 min
 Lab File: VX027528.D
 Acq: 18 Mar 2022 15:19

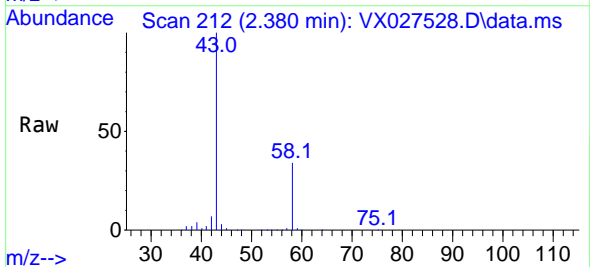
Instrument : MSVOA_X
 ClientSampleId :



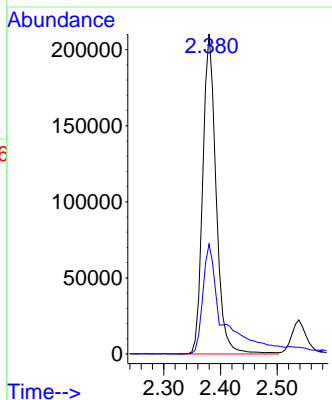
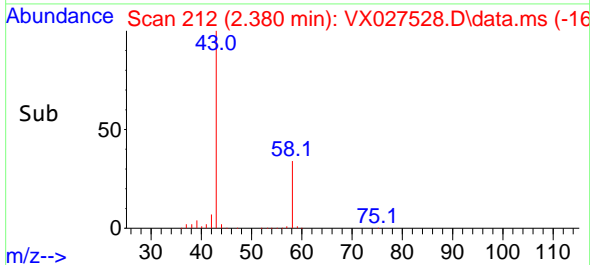
Tgt Ion: 53 Resp: 15369
 Ion Ratio Lower Upper
 53 100
 52 25.0 65.7 98.5#
 51 98.5 28.4 42.6#

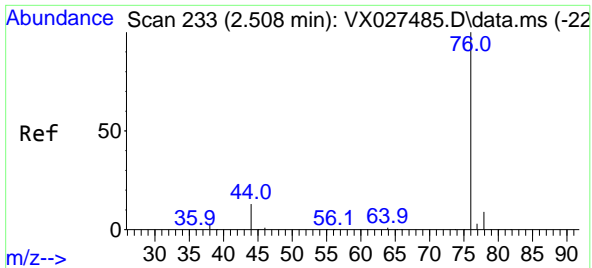


#16
 Acetone
 Concen: 198.885 ug/l
 RT: 2.380 min Scan# 212
 Delta R.T. 0.000 min
 Lab File: VX027528.D
 Acq: 18 Mar 2022 15:19



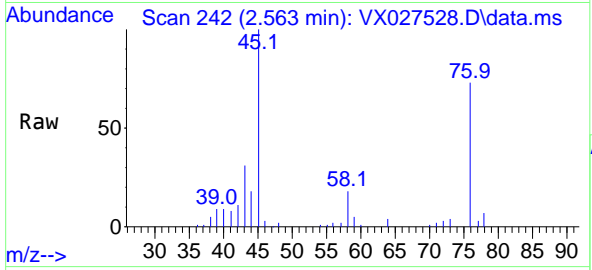
Tgt Ion: 43 Resp: 343754
 Ion Ratio Lower Upper
 43 100
 58 34.4 28.8 43.2



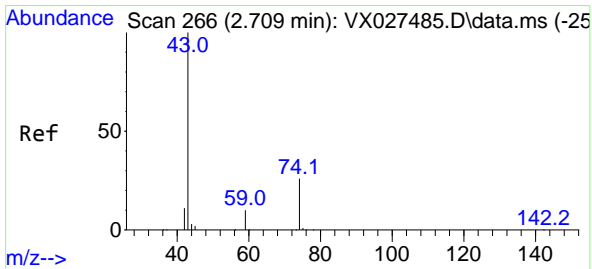
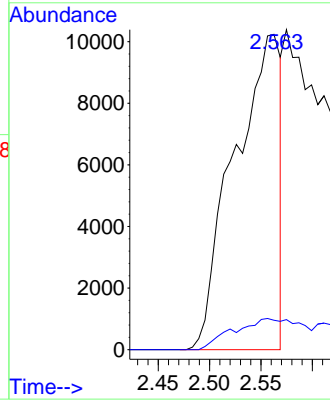
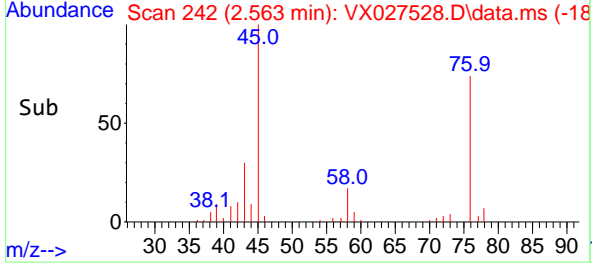


#17
 Carbon Disulfide
 Concen: 3.948 ug/l
 RT: 2.563 min Scan# 24
 Delta R.T. 0.055 min
 Lab File: VX027528.D
 Acq: 18 Mar 2022 15:19

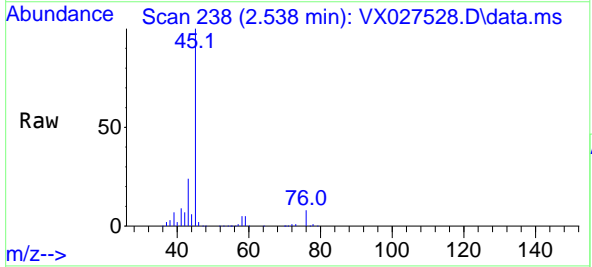
Instrument :
 MSVOA_X
 ClientSampleId :



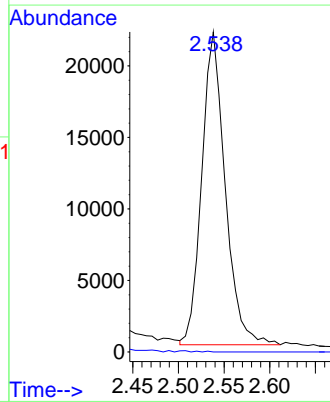
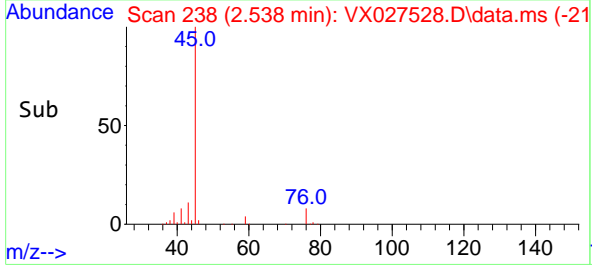
Tgt Ion: 76 Resp: 32112
 Ion Ratio Lower Upper
 76 100
 78 9.3 7.2 10.8

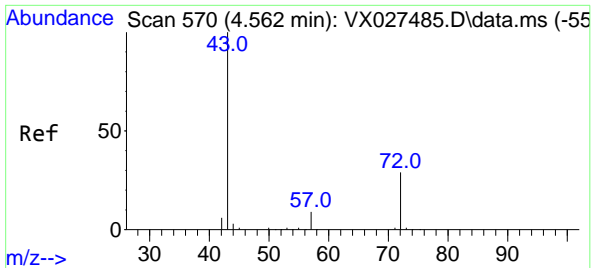


#18
 Methyl Acetate
 Concen: 9.425 ug/l
 RT: 2.538 min Scan# 238
 Delta R.T. -0.171 min
 Lab File: VX027528.D
 Acq: 18 Mar 2022 15:19



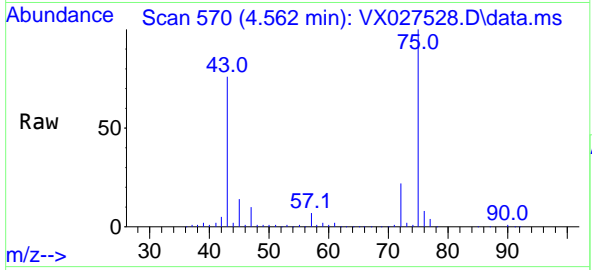
Tgt Ion: 43 Resp: 39043
 Ion Ratio Lower Upper
 43 100
 74 0.0 22.8 34.2#



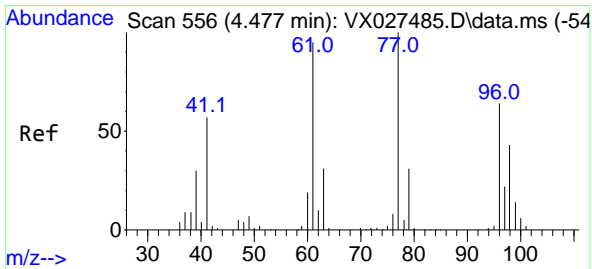
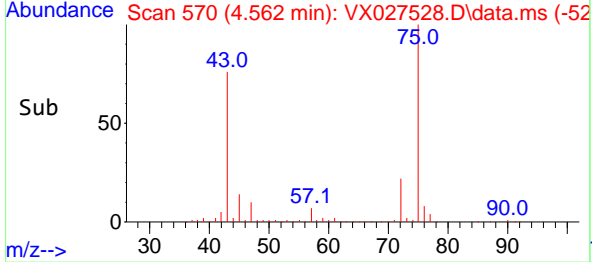
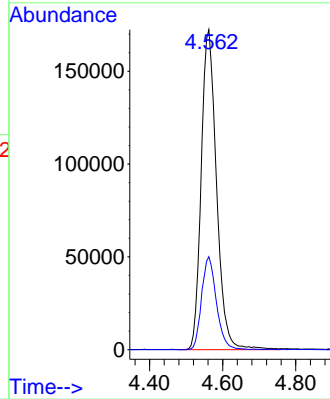


#25
 2-Butanone
 Concen: 192.709 ug/l
 RT: 4.562 min Scan# 51
 Delta R.T. 0.000 min
 Lab File: VX027528.D
 Acq: 18 Mar 2022 15:19

Instrument :
 MSVOA_X
 ClientSampleId :

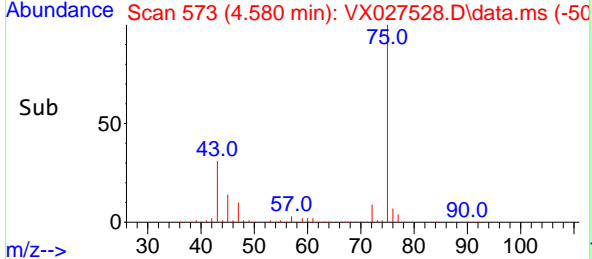
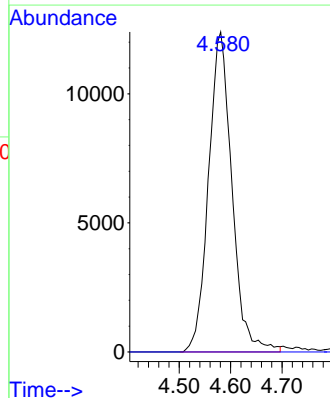
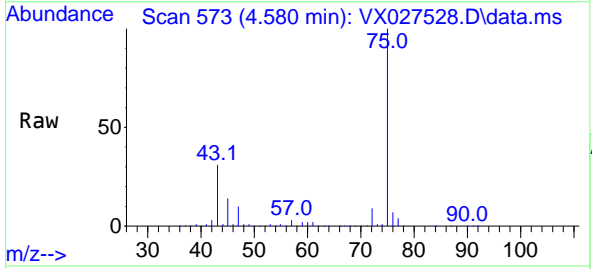


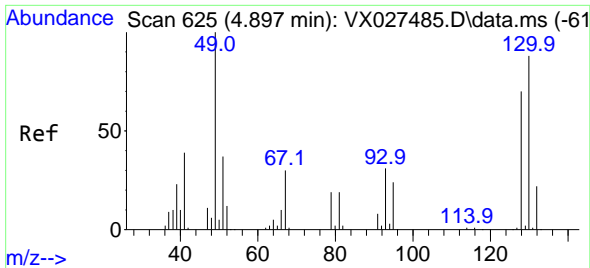
Tgt Ion: 43 Resp: 501125
 Ion Ratio Lower Upper
 43 100
 72 29.1 24.4 36.6



#26
 2,2-Dichloropropane
 Concen: 8.068 ug/l
 RT: 4.580 min Scan# 573
 Delta R.T. 0.104 min
 Lab File: VX027528.D
 Acq: 18 Mar 2022 15:19

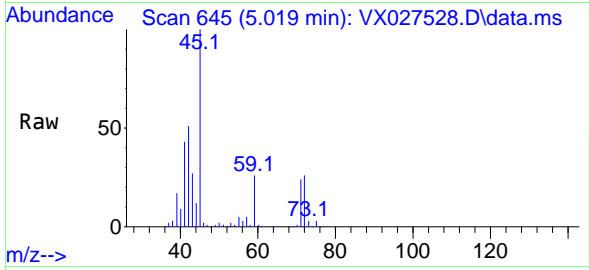
Tgt Ion: 77 Resp: 39140
 Ion Ratio Lower Upper
 77 100
 97 0.0 11.8 35.4#



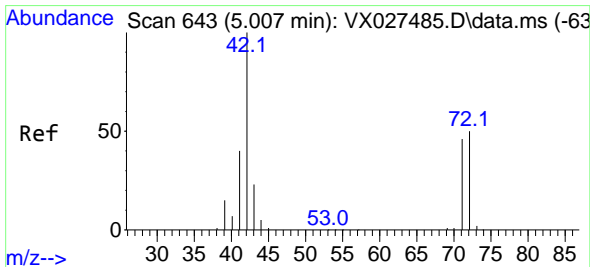
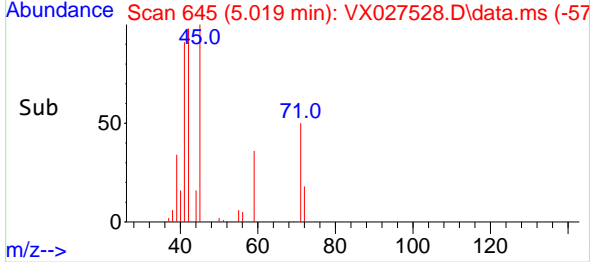
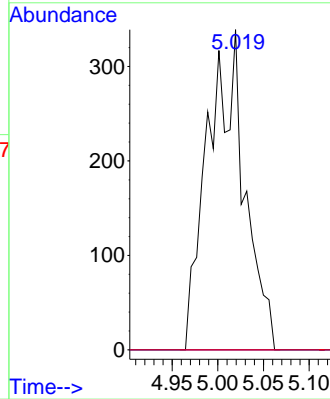


#28
 Bromochloromethane
 Concen: 0.395 ug/l
 RT: 5.019 min Scan# 645
 Delta R.T. 0.122 min
 Lab File: VX027528.D
 Acq: 18 Mar 2022 15:19

Instrument :
 MSVOA_X
 ClientSampleId :

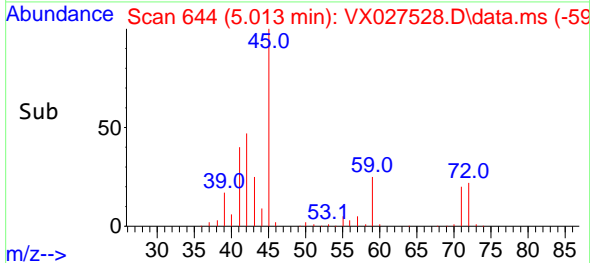
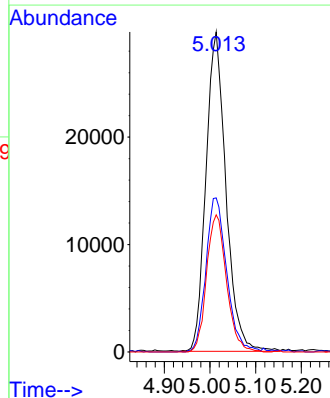
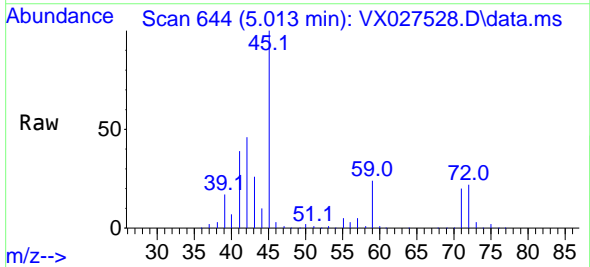


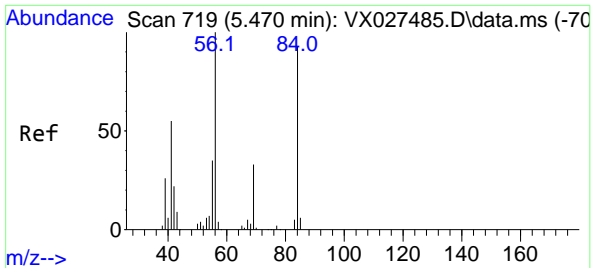
Tgt Ion: 49 Resp: 947
 Ion Ratio Lower Upper
 49 100
 129 0.0 0.0 4.4
 130 0.0 70.7 106.1#



#29
 Tetrahydrofuran
 Concen: 54.183 ug/l
 RT: 5.013 min Scan# 644
 Delta R.T. 0.006 min
 Lab File: VX027528.D
 Acq: 18 Mar 2022 15:19

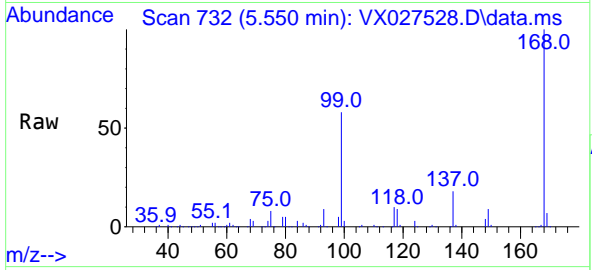
Tgt Ion: 42 Resp: 90388
 Ion Ratio Lower Upper
 42 100
 72 50.2 44.1 66.1
 71 42.7 40.5 60.7





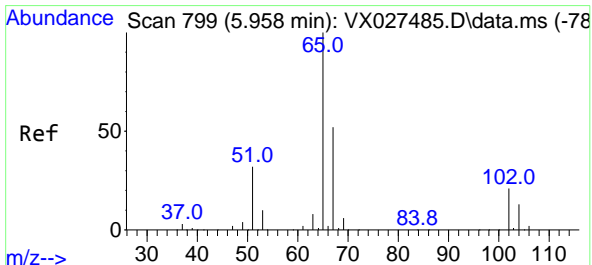
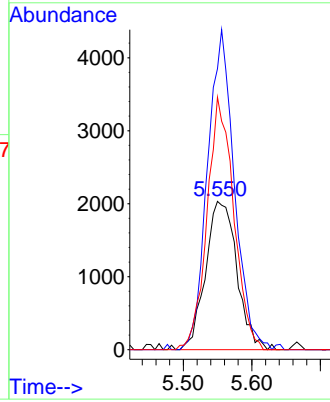
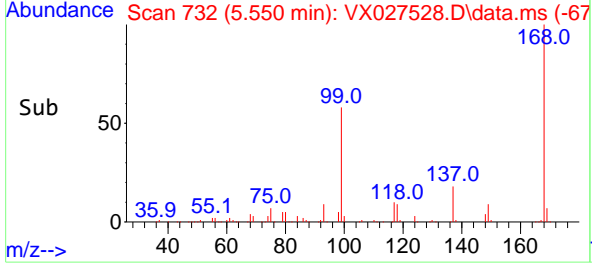
#31
 Cyclohexane
 Concen: 1.226 ug/l
 RT: 5.550 min Scan# 719
 Delta R.T. 0.079 min
 Lab File: VX027528.D
 Acq: 18 Mar 2022 15:19

Instrument : MSVOA_X
 ClientSampleId :

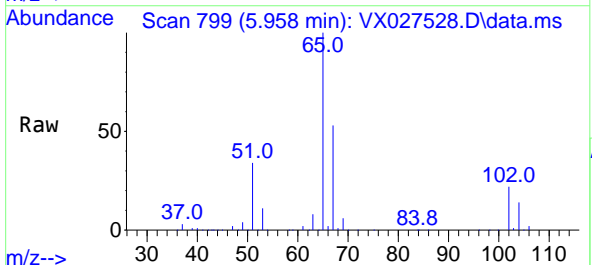


Tgt Ion: 56 Resp: 6457

Ion	Ratio	Lower	Upper
56	100		
69	189.4	26.7	40.1#
84	170.2	77.2	115.8#

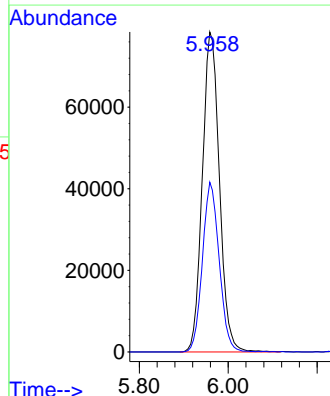
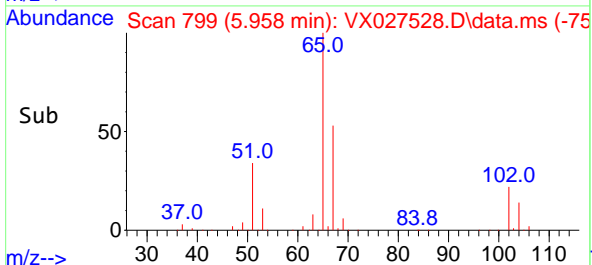


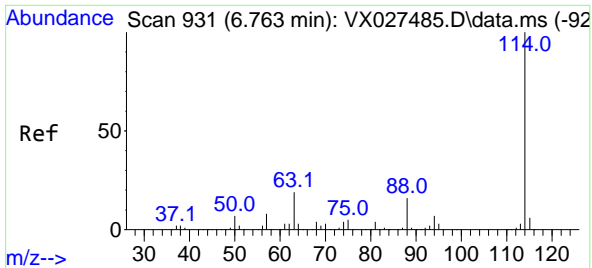
#33
 1,2-Dichloroethane-d4
 Concen: 49.510 ug/l
 RT: 5.958 min Scan# 799
 Delta R.T. 0.000 min
 Lab File: VX027528.D
 Acq: 18 Mar 2022 15:19



Tgt Ion: 65 Resp: 209940

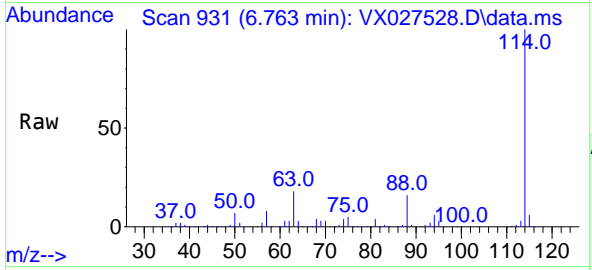
Ion	Ratio	Lower	Upper
65	100		
67	52.1	0.0	107.4



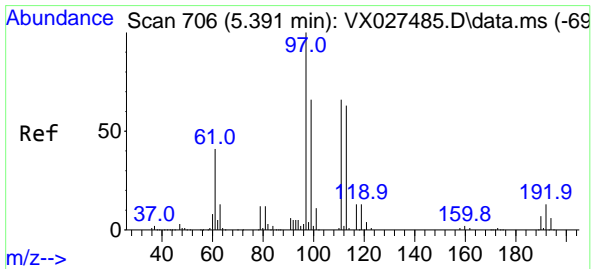
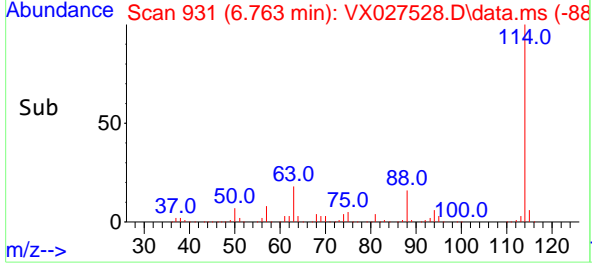
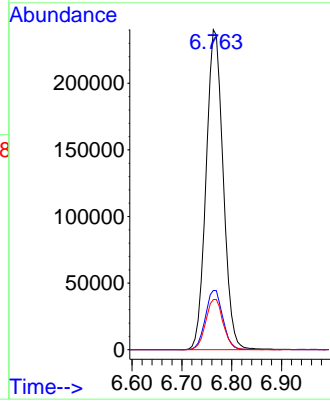


#34
 1,4-Difluorobenzene
 Concen: 50.000 ug/l
 RT: 6.763 min Scan# 911
 Delta R.T. 0.000 min
 Lab File: VX027528.D
 Acq: 18 Mar 2022 15:19

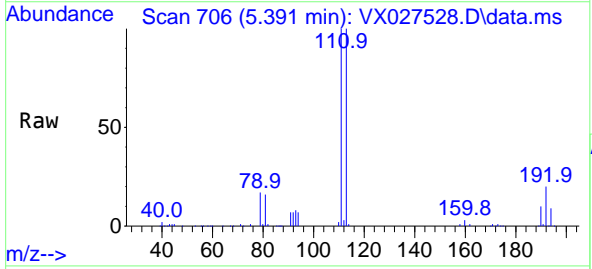
Instrument : MSVOA_X
 ClientSampleId :



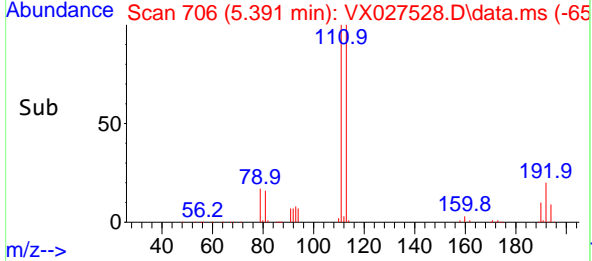
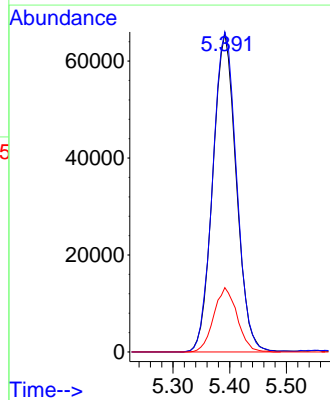
Tgt Ion:114 Resp: 571289
 Ion Ratio Lower Upper
 114 100
 63 18.5 0.0 36.8
 88 15.6 0.0 32.4

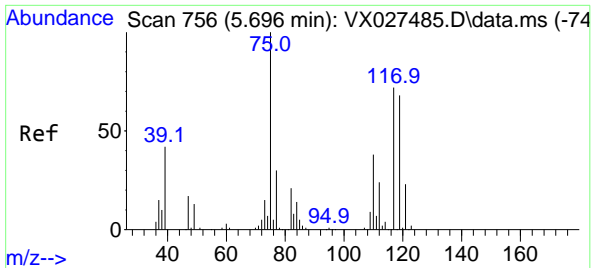


#35
 Dibromofluoromethane
 Concen: 51.287 ug/l
 RT: 5.391 min Scan# 706
 Delta R.T. 0.000 min
 Lab File: VX027528.D
 Acq: 18 Mar 2022 15:19



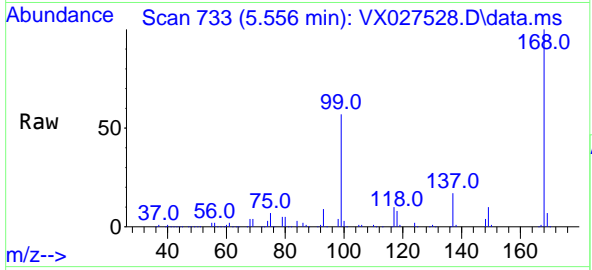
Tgt Ion:113 Resp: 188510
 Ion Ratio Lower Upper
 113 100
 111 102.2 82.8 124.2
 192 20.2 16.9 25.3



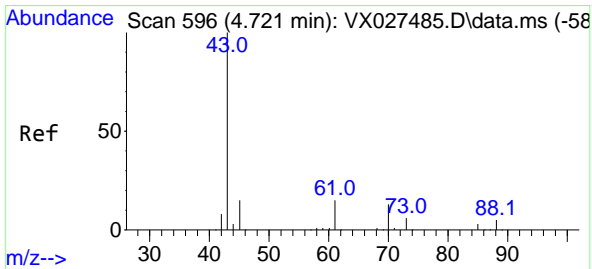
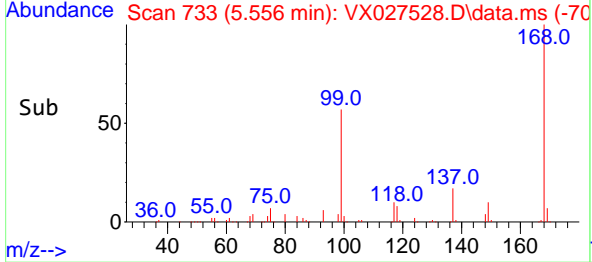
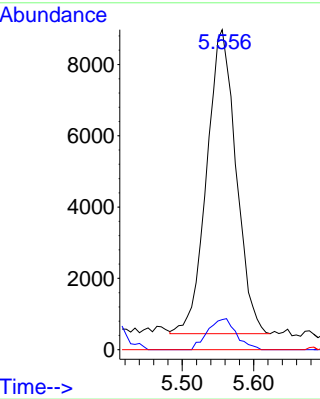


#36
 1,1-Dichloropropene
 Concen: 4.835 ug/l
 RT: 5.556 min Scan# 71
 Delta R.T. -0.140 min
 Lab File: VX027528.D
 Acq: 18 Mar 2022 15:19

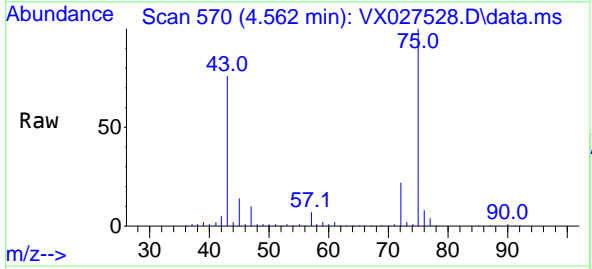
Instrument :
 MSVOA_X
 ClientSampleId :



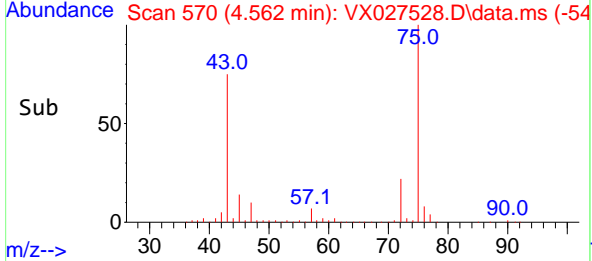
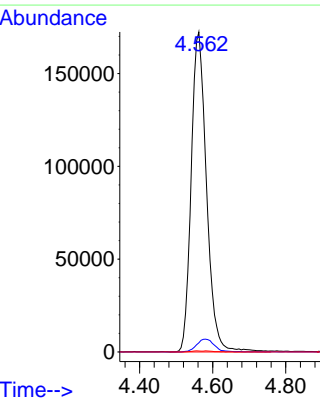
Tgt Ion: 75 Resp: 24284
 Ion Ratio Lower Upper
 75 100
 110 9.9 18.3 54.8#
 77 0.0 24.8 37.2#

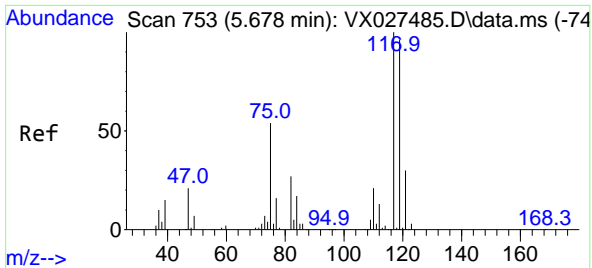


#37
 Ethyl Acetate
 Concen: 100.124 ug/l
 RT: 4.562 min Scan# 570
 Delta R.T. -0.158 min
 Lab File: VX027528.D
 Acq: 18 Mar 2022 15:19



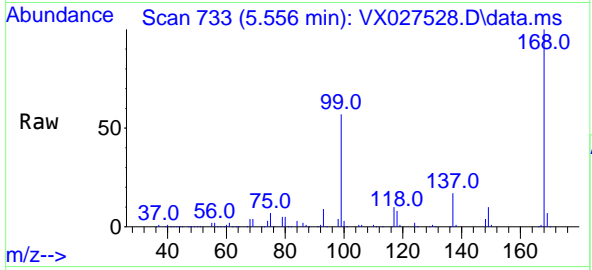
Tgt Ion: 43 Resp: 501125
 Ion Ratio Lower Upper
 43 100
 61 0.0 12.6 19.0#
 70 0.3 10.2 15.2#



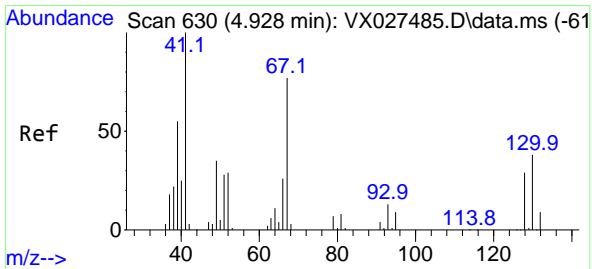
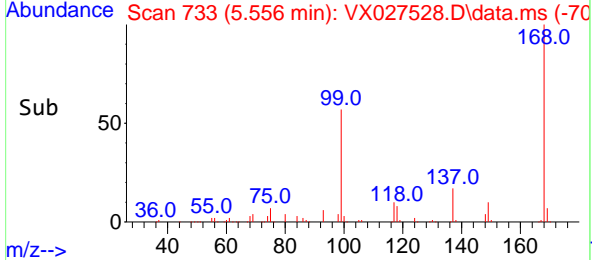
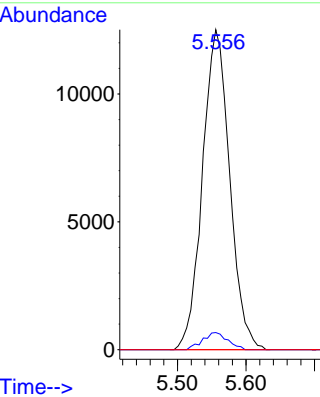


#38
 Carbon Tetrachloride
 Concen: 6.005 ug/l
 RT: 5.556 min Scan# 711
 Delta R.T. -0.122 min
 Lab File: VX027528.D
 Acq: 18 Mar 2022 15:19

Instrument : MSVOA_X
 ClientSampleId :

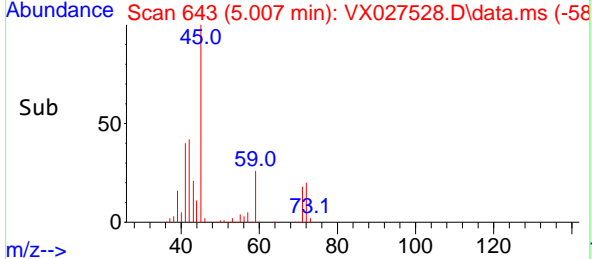
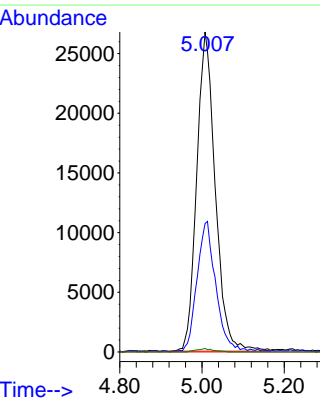
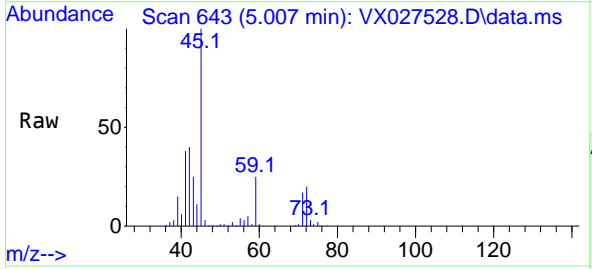


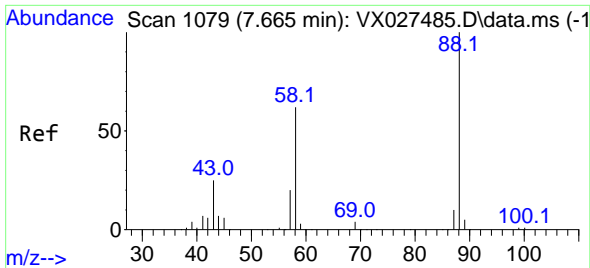
Tgt Ion: 117 Resp: 34509
 Ion Ratio Lower Upper
 117 100
 119 5.4 77.3 115.9#
 121 0.0 24.2 36.2#



#41
 Methacrylonitrile
 Concen: 30.707 ug/l
 RT: 5.007 min Scan# 643
 Delta R.T. 0.079 min
 Lab File: VX027528.D
 Acq: 18 Mar 2022 15:19

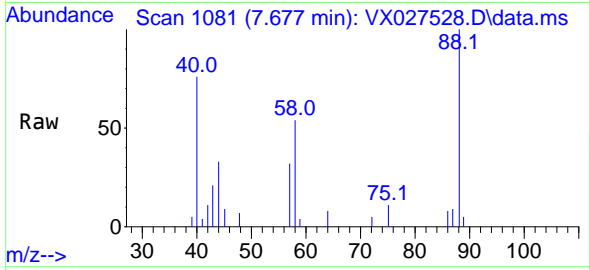
Tgt Ion: 41 Resp: 83819
 Ion Ratio Lower Upper
 41 100
 39 41.6 43.0 64.4#
 67 0.0 70.2 105.4#
 52 1.0 26.0 39.0#



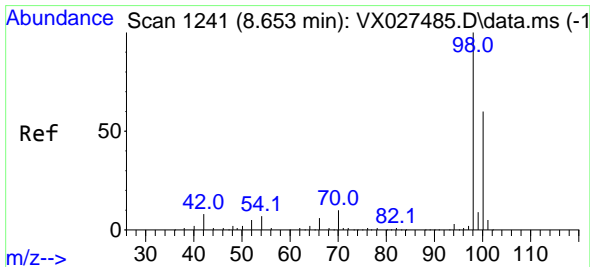
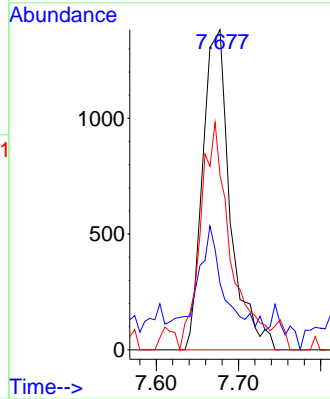
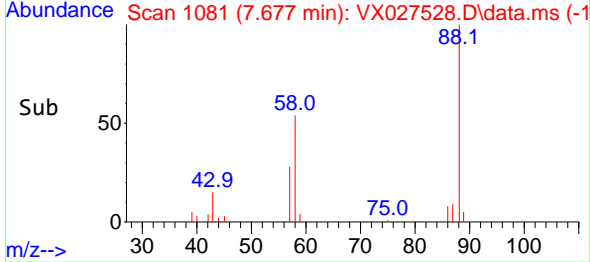


#49
 1,4-Dioxane
 Concen: 31.497 ug/l
 RT: 7.677 min Scan# 1081
 Delta R.T. 0.012 min
 Lab File: VX027528.D
 Acq: 18 Mar 2022 15:19

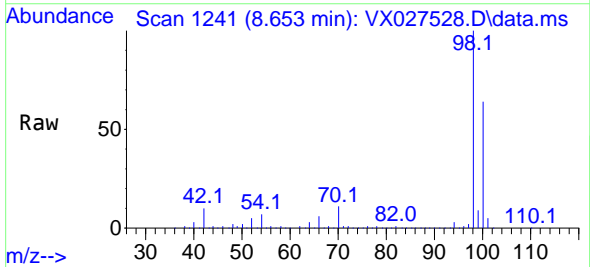
Instrument : MSVOA_X
 ClientSampleId :



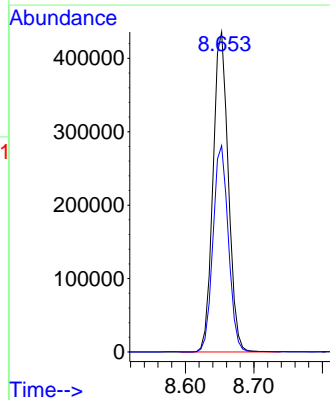
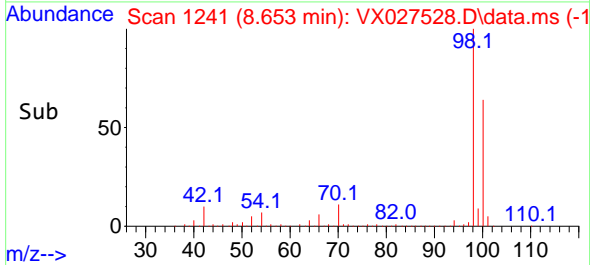
Tgt Ion: 88 Resp: 3225
 Ion Ratio Lower Upper
 88 100
 43 27.7 21.9 32.9
 58 77.3 53.7 80.5

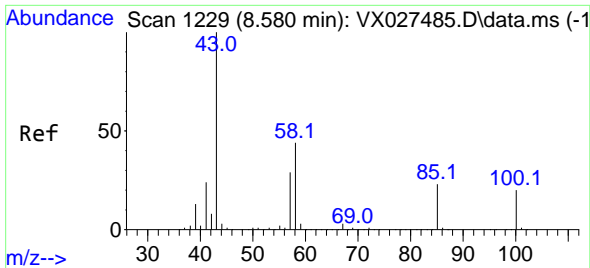


#50
 Toluene-d8
 Concen: 48.557 ug/l
 RT: 8.653 min Scan# 1241
 Delta R.T. 0.000 min
 Lab File: VX027528.D
 Acq: 18 Mar 2022 15:19



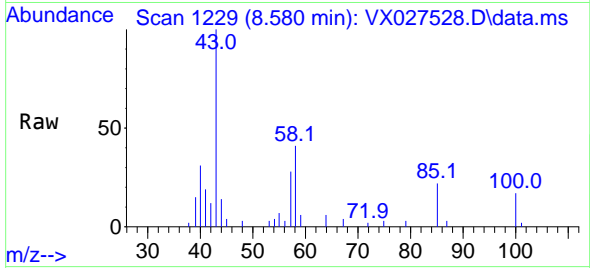
Tgt Ion: 98 Resp: 675369
 Ion Ratio Lower Upper
 98 100
 100 64.6 52.6 78.8



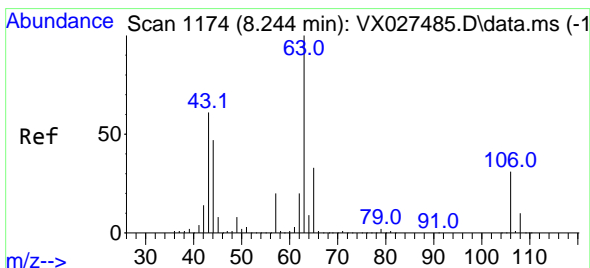
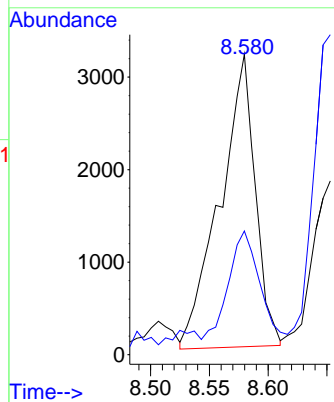
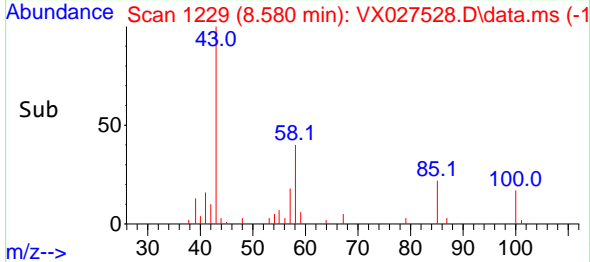


#51
 4-Methyl-2-Pentanone
 Concen: 1.282 ug/l
 RT: 8.580 min Scan# 1178
 Delta R.T. 0.000 min
 Lab File: VX027528.D
 Acq: 18 Mar 2022 15:19

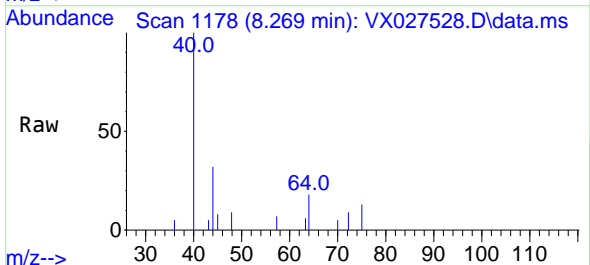
Instrument : MSVOA_X
 ClientSampleId :



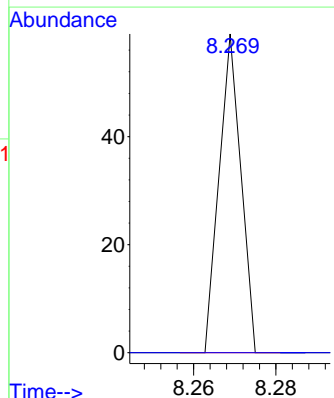
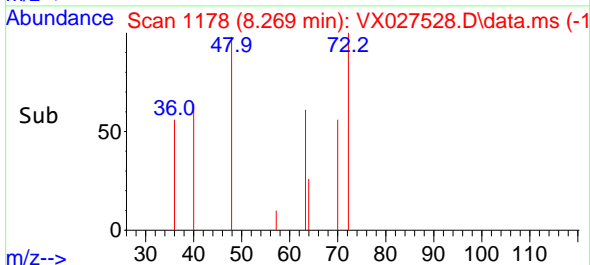
Tgt Ion: 43 Resp: 6594
 Ion Ratio Lower Upper
 43 100
 58 36.1 36.1 54.1

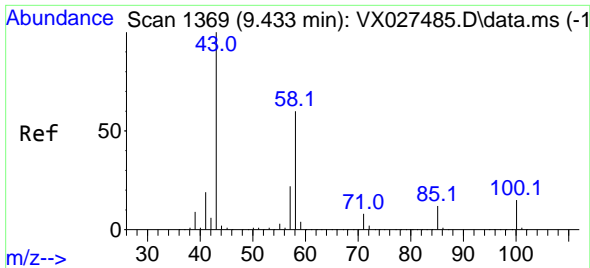


#58
 2-Chloroethyl Vinyl ether
 Concen: Below Cal
 RT: 8.269 min Scan# 1178
 Delta R.T. 0.025 min
 Lab File: VX027528.D
 Acq: 18 Mar 2022 15:19



Tgt Ion: 63 Resp: 22
 Ion Ratio Lower Upper
 63 100
 106 0.0 23.9 35.9#

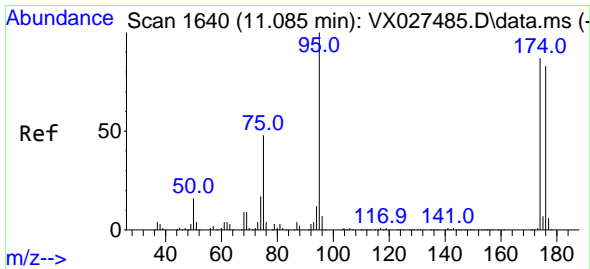
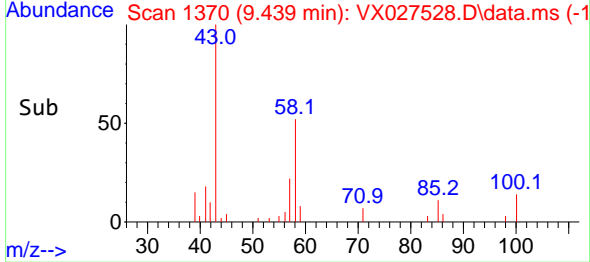
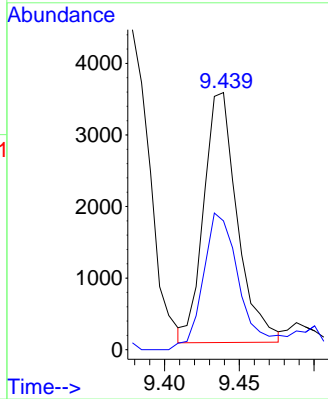
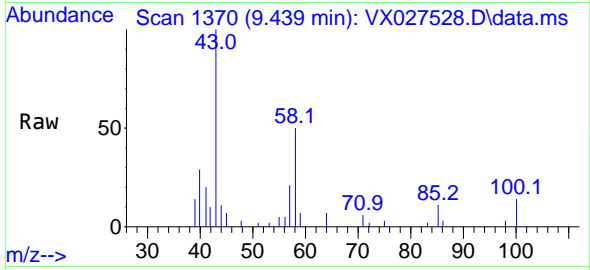




#59
 2-Hexanone
 Concen: 1.376 ug/l
 RT: 9.439 min Scan# 1369
 Delta R.T. 0.006 min
 Lab File: VX027528.D
 Acq: 18 Mar 2022 15:19

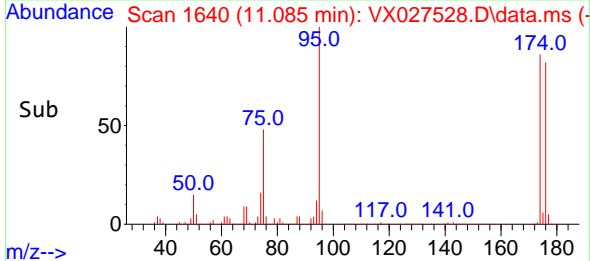
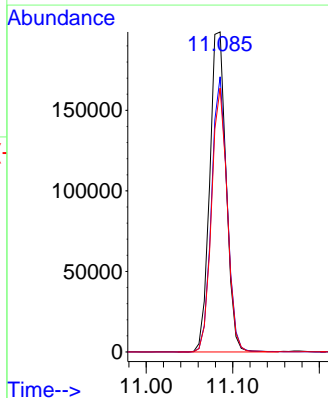
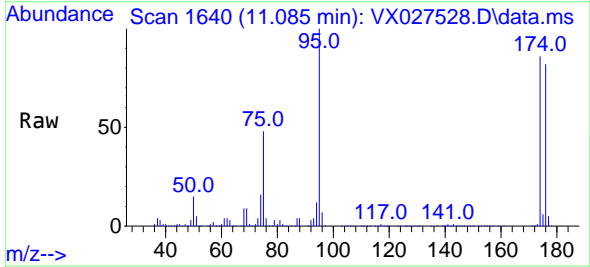
Instrument : MSVOA_X
 ClientSampleId :

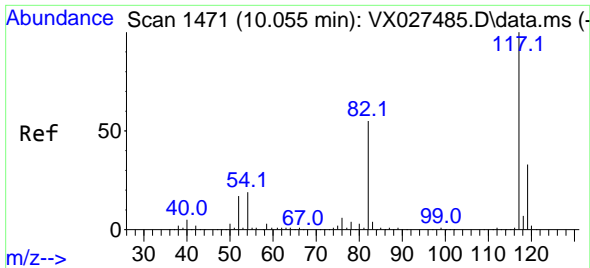
Tgt Ion: 43 Resp: 5451
 Ion Ratio Lower Upper
 43 100
 58 59.9 31.9 95.7



#62
 4-Bromofluorobenzene
 Concen: 51.158 ug/l
 RT: 11.085 min Scan# 1640
 Delta R.T. 0.000 min
 Lab File: VX027528.D
 Acq: 18 Mar 2022 15:19

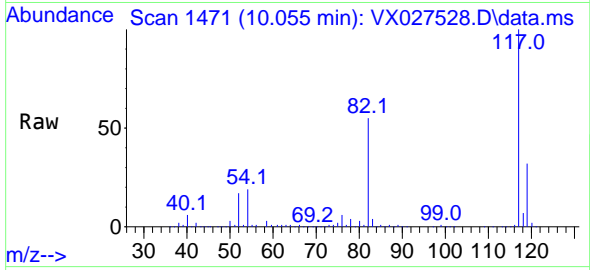
Tgt Ion: 95 Resp: 261533
 Ion Ratio Lower Upper
 95 100
 174 81.7 0.0 163.0
 176 78.9 0.0 155.0



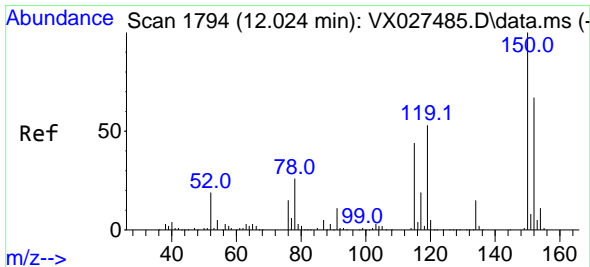
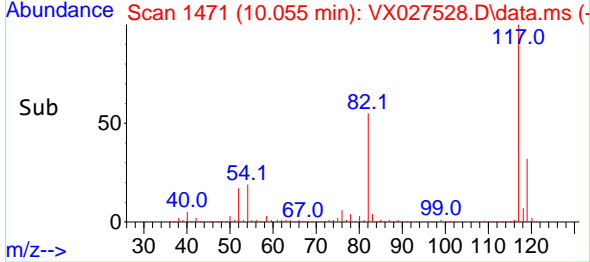
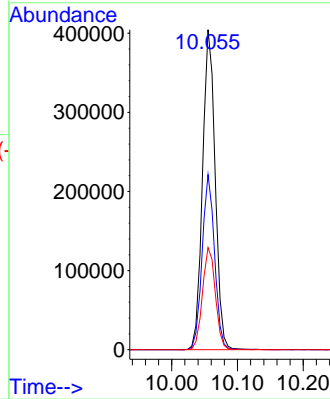


#63
 Chlorobenzene-d5
 Concen: 50.000 ug/l
 RT: 10.055 min Scan# 1471
 Delta R.T. 0.000 min
 Lab File: VX027528.D
 Acq: 18 Mar 2022 15:19

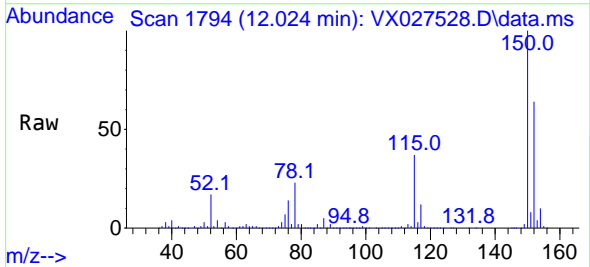
Instrument : MSVOA_X
 ClientSampleId :



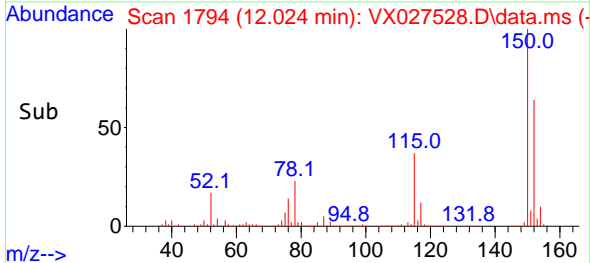
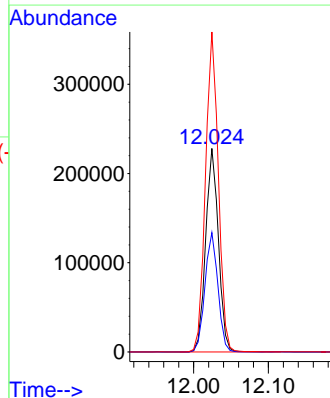
Tgt Ion:117 Resp: 538940
 Ion Ratio Lower Upper
 117 100
 82 54.7 41.8 62.8
 119 31.9 24.8 37.2

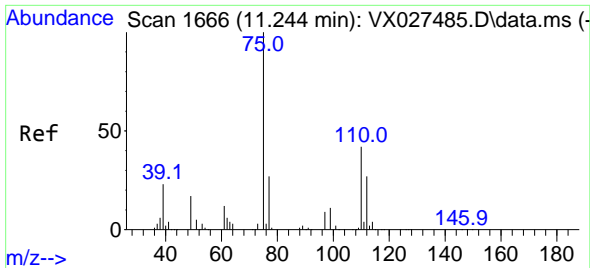


#72
 1,4-Dichlorobenzene-d4
 Concen: 50.000 ug/l
 RT: 12.024 min Scan# 1794
 Delta R.T. 0.000 min
 Lab File: VX027528.D
 Acq: 18 Mar 2022 15:19



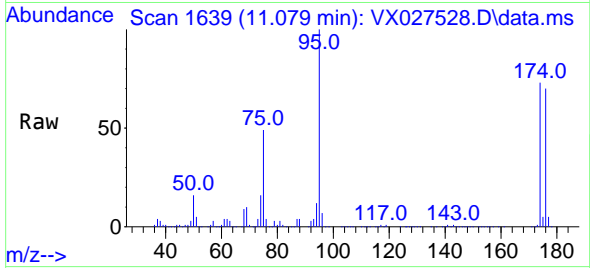
Tgt Ion:152 Resp: 270030
 Ion Ratio Lower Upper
 152 100
 115 59.7 37.5 112.7
 150 158.6 0.0 338.2



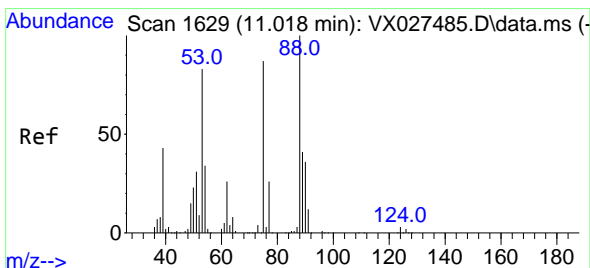
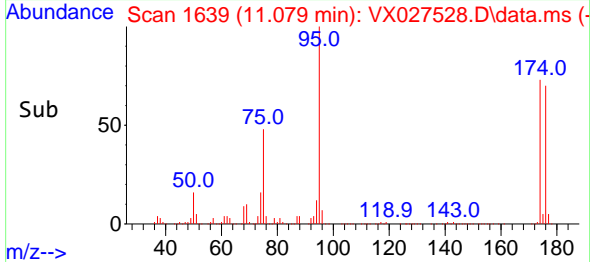
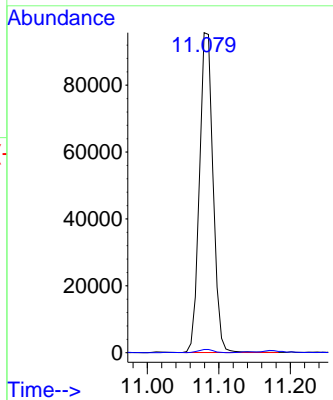


#76
 1,2,3-Trichloropropane
 Concen: 22.349 ug/l
 RT: 11.079 min Scan# 1639
 Delta R.T. -0.164 min
 Lab File: VX027528.D
 Acq: 18 Mar 2022 15:19

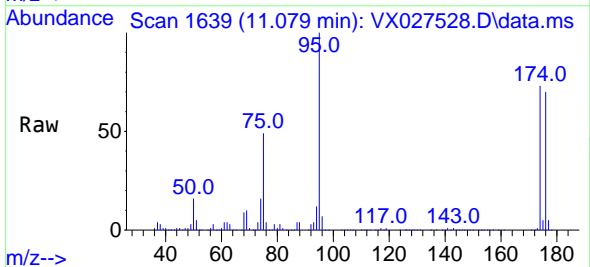
Instrument : MSVOA_X
 ClientSampleId :



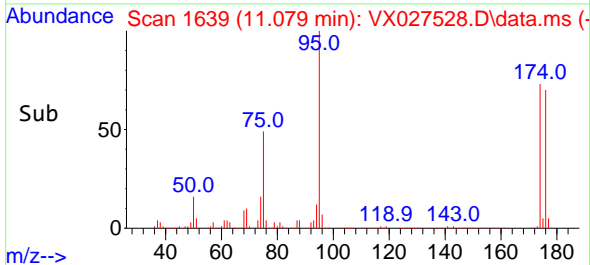
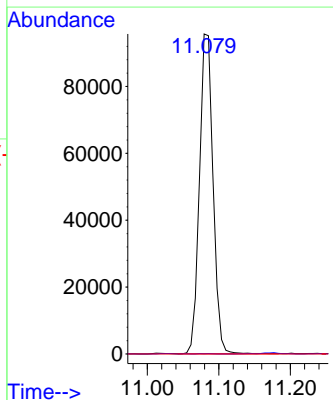
Tgt Ion: 75 Resp: 126230
 Ion Ratio Lower Upper
 75 100
 77 1.1 19.4 58.2#

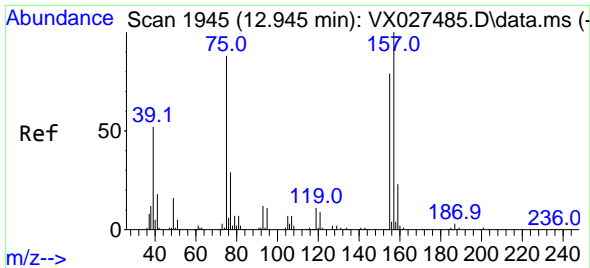


#81
 trans-1,4-Dichloro-2-butene
 Concen: 67.875 ug/l
 RT: 11.079 min Scan# 1639
 Delta R.T. 0.061 min
 Lab File: VX027528.D
 Acq: 18 Mar 2022 15:19



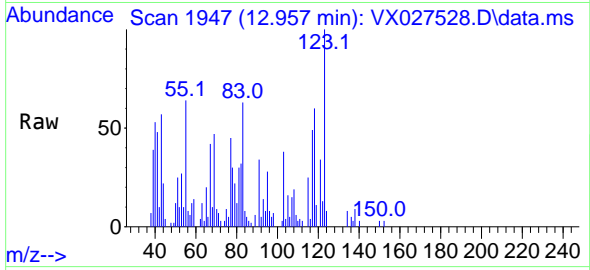
Tgt Ion: 75 Resp: 126230
 Ion Ratio Lower Upper
 75 100
 53 0.1 69.0 103.4#
 89 0.0 37.0 55.6#



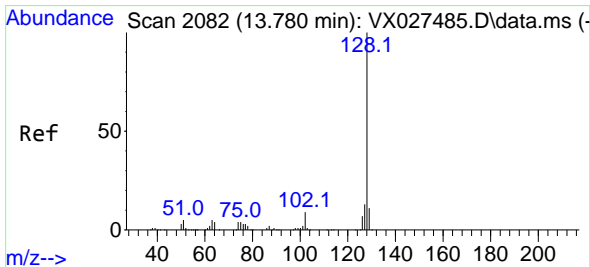
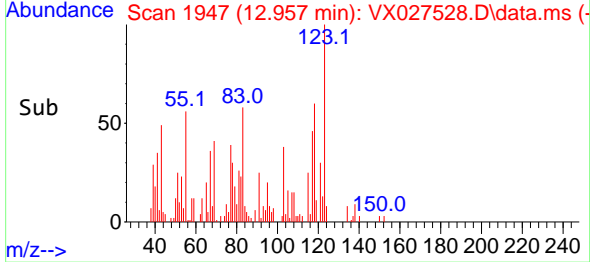
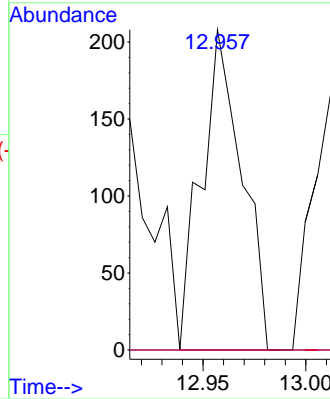


#92
 1,2-Dibromo-3-Chloropropane
 Concen: 0.200 ug/l
 RT: 12.957 min Scan# 1945
 Delta R.T. 0.012 min
 Lab File: VX027528.D
 Acq: 18 Mar 2022 15:19

Instrument : MSVOA_X
 ClientSampleId :



Tgt Ion: 75 Resp: 286
 Ion Ratio Lower Upper
 75 100
 155 0.0 47.0 141.2#
 157 0.0 57.9 173.6#



#95
 Naphthalene
 Concen: 0.840 ug/l
 RT: 13.780 min Scan# 2082
 Delta R.T. 0.000 min
 Lab File: VX027528.D
 Acq: 18 Mar 2022 15:19

Tgt Ion:128 Resp: 15712
 Ion Ratio Lower Upper
 128 100
 127 13.7 10.2 15.4
 129 11.6 8.7 13.1

