

Data Path : Z:\voasrv\HPCHEM1\MSVOA\_X\Data\VX031822\  
 Data File : VX027522.D  
 Acq On : 18 Mar 2022 12:57  
 Operator : JC/MD  
 Sample : N1997-17DL 10X  
 Misc : 5.0mL/MSVOA\_X/WATER  
 ALS Vial : 7 Sample Multiplier: 1

Instrument :  
 MSVOA\_X  
 ClientSampleId :  
 MW-121DL

Integration Parameters: RTEINT.P

Integrator: RTE  
 Smoothing : ON Filtering: 5  
 Sampling : 1 Min Area: 3 % of largest Peak  
 Start Thrs: 0.2 Max Peaks: 100  
 Stop Thrs : 0 Peak Location: TOP

If leading or trailing edge < 100 prefer < Baseline drop else tangent >  
 Peak separation: 5

Method : Z:\voasrv\HPCHEM1\MSVOA\_X\Method\82X031722W.M  
 Title : SW846 8260

Signal : TIC: VX027522.D\data.ms

peak #	R.T. min	first scan	max scan	last scan	PK TY	peak height	corr. area	corr. % max.	% of total
1	2.959	300	307	319	rBV	48394	107413	6.41%	1.074%
2	3.117	323	333	353	rVB	322830	736168	43.91%	7.363%
3	5.391	694	706	721	rBV2	204747	599142	35.74%	5.993%
4	5.556	721	733	749	rVB	348602	973082	58.05%	9.733%
5	5.964	789	800	811	rBV	206192	550338	32.83%	5.505%
6	6.336	852	861	871	rVB3	9151	25806	1.54%	0.258%
7	6.763	921	931	951	rBV	526665	1247248	74.40%	12.475%
8	8.653	1234	1241	1249	rBV	1087576	1676375	100.00%	16.767%
9	10.055	1465	1471	1485	rBV	1117020	1481302	88.36%	14.816%
10	11.085	1634	1640	1650	rBV	899858	1150480	68.63%	11.507%
11	12.024	1788	1794	1811	rVB	1218420	1450470	86.52%	14.508%

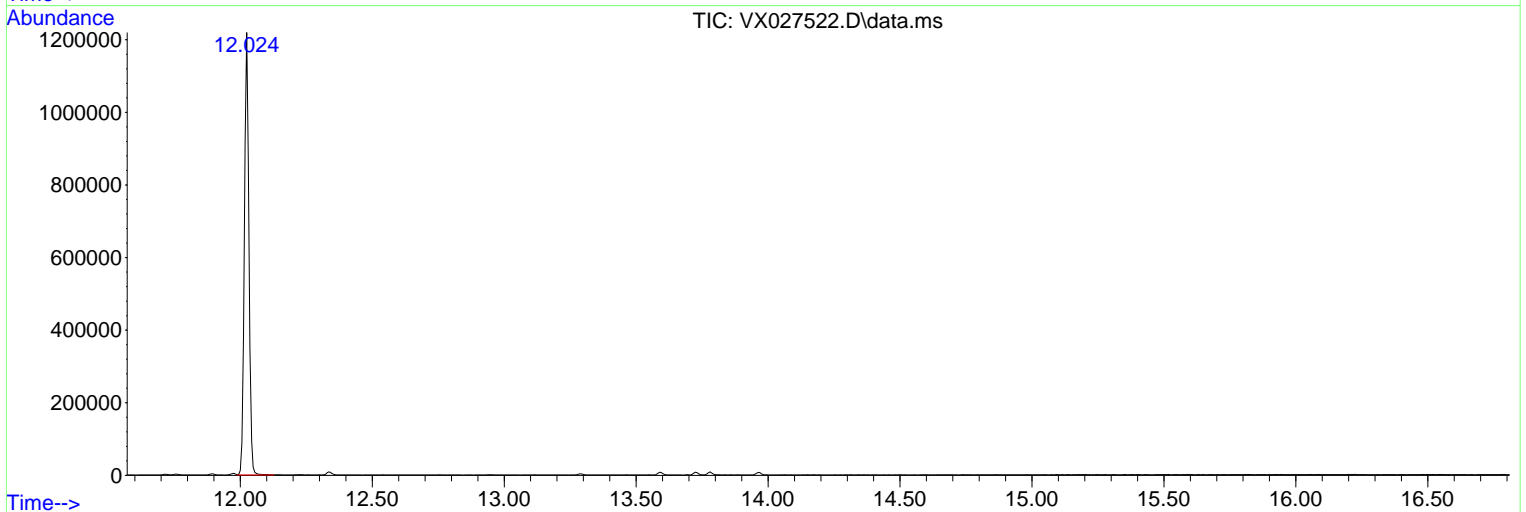
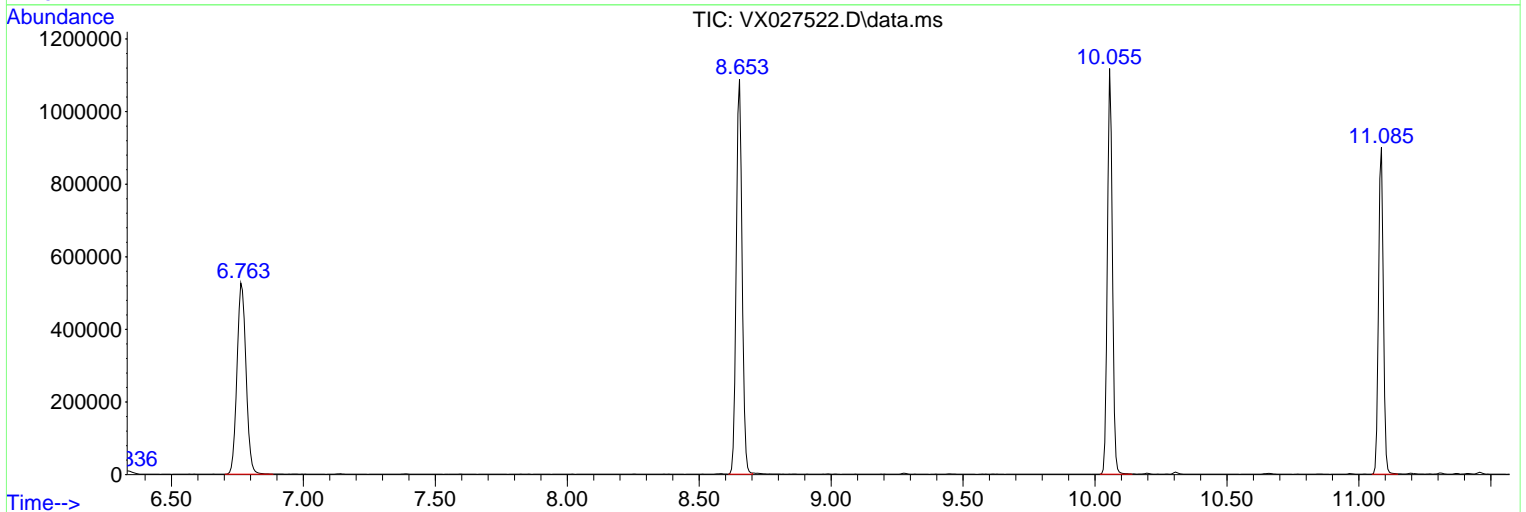
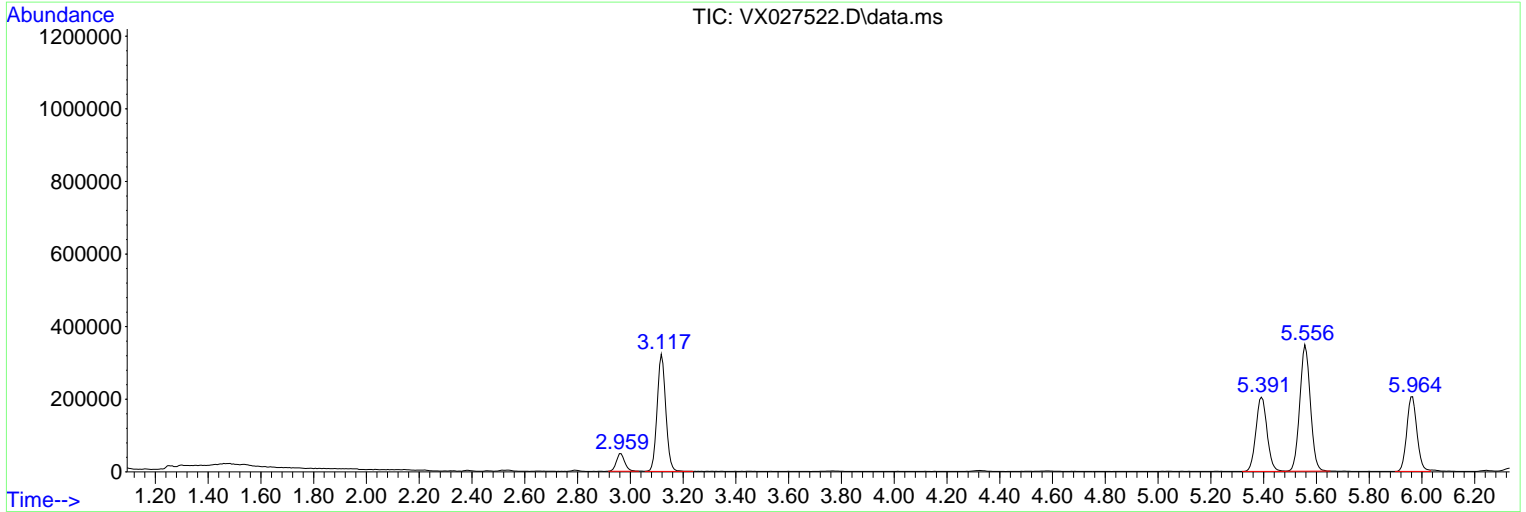
Sum of corrected areas: 9997824

Data Path : Z:\voasrv\HPCHEM1\MSVOA\_X\Data\VX031822\  
 Data File : VX027522.D  
 Acq On : 18 Mar 2022 12:57  
 Operator : JC/MD  
 Sample : N1997-17DL 10X  
 Misc : 5.0mL/MSVOA\_X/WATER  
 ALS Vial : 7 Sample Multiplier: 1

Instrument :  
 MSVOA\_X  
 ClientSampleId :  
 MW-121DL

Quant Method : Z:\voasrv\HPCHEM1\MSVOA\_X\Method\82X031722W.M  
 Quant Title : SW846 8260

TIC Library : C:\Database\NIST20.L  
 TIC Integration Parameters: LSCINT.P



Library Search Compound Report

Data Path : Z:\voasrv\HPCHEM1\MSVOA\_X\Data\VX031822\  
Data File : VX027522.D  
Acq On : 18 Mar 2022 12:57  
Operator : JC/MD  
Sample : N1997-17DL 10X  
Misc : 5.0mL/MSVOA\_X/WATER  
ALS Vial : 7 Sample Multiplier: 1

Instrument :  
MSVOA\_X  
ClientSampleId :  
MW-121DL

Quant Method : Z:\voasrv\HPCHEM1\MSVOA\_X\Method\82X031722W.M  
Quant Title : SW846 8260

TIC Library : C:\Database\NIST20.L  
TIC Integration Parameters: LSCINT.P

No Library Search Compounds Detected

\*\*\*\*\*

Data Path : Z:\voasrv\HPCHEM1\MSVOA\_X\Data\VX031822\  
Data File : VX027522.D  
Acq On : 18 Mar 2022 12:57  
Operator : JC/MD  
Sample : N1997-17DL 10X  
Misc : 5.0mL/MSVOA\_X/WATER  
ALS Vial : 7 Sample Multiplier: 1

Instrument :  
MSVOA\_X  
ClientSampleId :  
MW-121DL

Quant Method : Z:\voasrv\HPCHEM1\MSVOA\_X\Method\82X031722W.M  
Quant Title : SW846 8260

TIC Library : C:\Database\NIST0.L  
TIC Integration Parameters: LSCINT.P

TIC Top Hit name	RT	EstConc	Units	Response	#	RT	Resp	Conc
------------------	----	---------	-------	----------	---	----	------	------

---