

Data Path : Z:\voasrv\HPCHEM1\MSVOA_X\Data\VX031825\
 Data File : VX045313.D
 Acq On : 18 Mar 2025 10:30
 Operator : JC/MD
 Sample : VX0318MBL01
 Misc : 5.00g/10mL/100uL/5.00mL/MSVOA_X/MEOH
 ALS Vial : 3 Sample Multiplier: 1

Instrument :
 MSVOA_X
 ClientSampleId :
 VX0318MBL01

Quant Time: Mar 19 01:39:19 2025
 Quant Method : Z:\voasrv\HPCHEM1\MSVOA_X\Method\82X022825W.M
 Quant Title : SW846 8260
 QLast Update : Fri Feb 28 06:45:16 2025
 Response via : Initial Calibration

Compound	R.T.	QIon	Response	Conc	Units	Dev(Min)

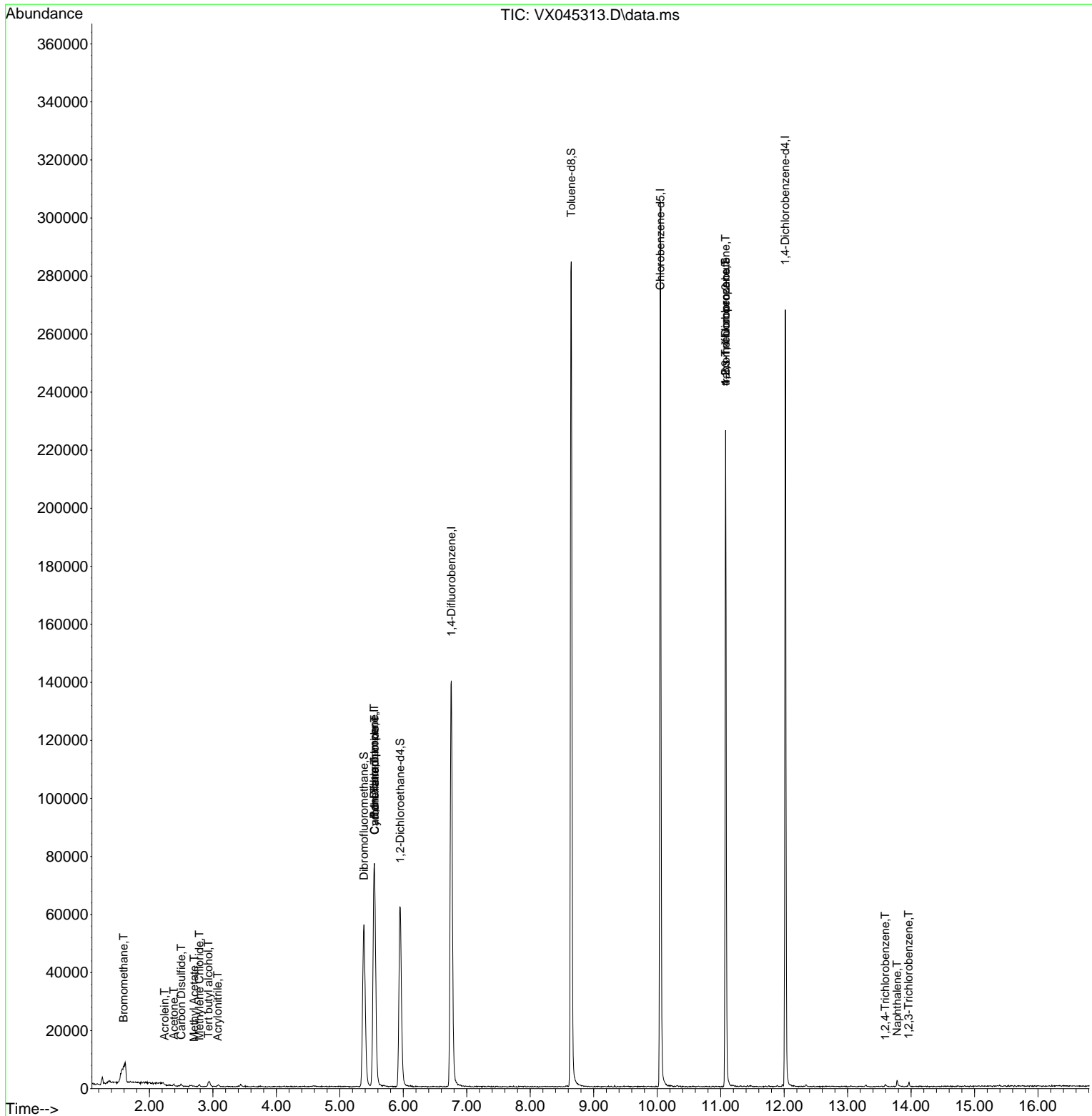
Internal Standards						
1) Pentafluorobenzene	5.544	168	70382	50.000	ug/l	0.00
34) 1,4-Difluorobenzene	6.757	114	138129	50.000	ug/l	0.00
63) Chlorobenzene-d5	10.049	117	126332	50.000	ug/l	0.00
72) 1,4-Dichlorobenzene-d4	12.018	152	50223	50.000	ug/l	0.00
System Monitoring Compounds						
33) 1,2-Dichloroethane-d4	5.952	65	61058	54.539	ug/l	0.00
Spiked Amount	50.000	Range 74 - 125	Recovery	=	109.080%	
35) Dibromofluoromethane	5.379	113	48989	53.039	ug/l	0.00
Spiked Amount	50.000	Range 75 - 124	Recovery	=	106.080%	
50) Toluene-d8	8.647	98	172294	51.454	ug/l	0.00
Spiked Amount	50.000	Range 86 - 113	Recovery	=	102.900%	
62) 4-Bromofluorobenzene	11.079	95	58385	52.619	ug/l	0.00
Spiked Amount	50.000	Range 77 - 121	Recovery	=	105.240%	
Target Compounds						
						Qvalue
5) Bromomethane	1.593	94	224	0.530	ug/l #	80
11) Tert butyl alcohol	2.928	59	1226	5.781	ug/l #	73
13) Acrolein	2.239	56	98	0.400	ug/l #	1
15) Acrylonitrile	3.075	53	317	0.558	ug/l #	83
16) Acetone	2.386	43	705	1.357	ug/l	96
17) Carbon Disulfide	2.501	76	1004	0.436	ug/l #	77
18) Methyl Acetate	2.703	43	285	0.228	ug/l #	54
20) Methylene Chloride	2.788	84	284	0.276	ug/l #	48
31) Cyclohexane	5.550	56	1823	1.197	ug/l #	18
36) 1,1-Dichloropropene	5.544	75	6831	5.393	ug/l #	51
38) Carbon Tetrachloride	5.550	117	8004	6.224	ug/l #	14
76) 1,2,3-Trichloropropane	11.079	75	32545	27.841	ug/l #	36
81) trans-1,4-Dichloro-2-b...	11.079	75	32545	95.278	ug/l #	6
93) 1,2,4-Trichlorobenzene	13.591	180	398	0.422	ug/l #	81
95) Naphthalene	13.780	128	2297	0.634	ug/l #	96
96) 1,2,3-Trichlorobenzene	13.963	180	440	0.443	ug/l	98

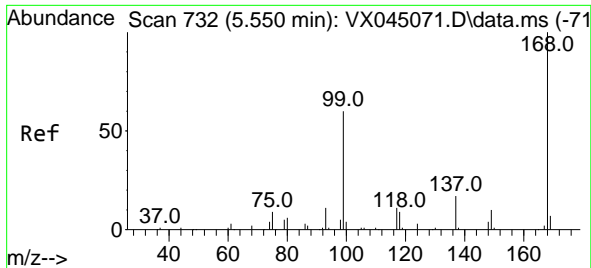
(#) = qualifier out of range (m) = manual integration (+) = signals summed

Data Path : Z:\voasrv\HPCHEM1\MSVOA_X\Data\VX031825\
 Data File : VX045313.D
 Acq On : 18 Mar 2025 10:30
 Operator : JC/MD
 Sample : VX0318MBL01
 Misc : 5.00g/10mL/100uL/5.00mL/MSVOA_X/MEOH
 ALS Vial : 3 Sample Multiplier: 1

Instrument :
 MSVOA_X
 ClientSampleId :
 VX0318MBL01

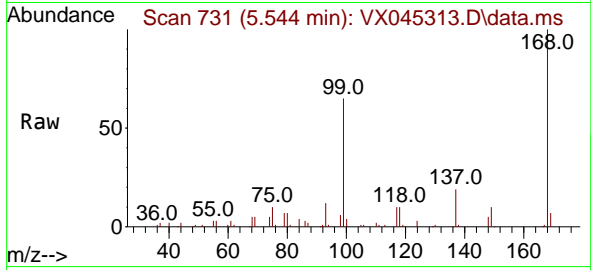
Quant Time: Mar 19 01:39:19 2025
 Quant Method : Z:\voasrv\HPCHEM1\MSVOA_X\Method\82X022825W.M
 Quant Title : SW846 8260
 QLast Update : Fri Feb 28 06:45:16 2025
 Response via : Initial Calibration



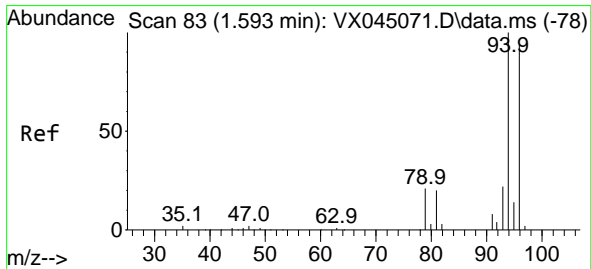
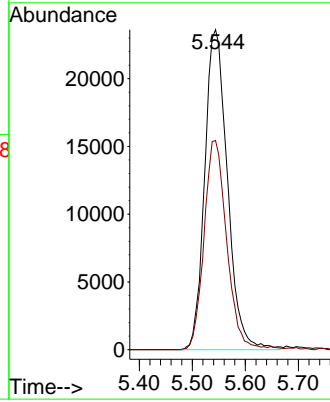
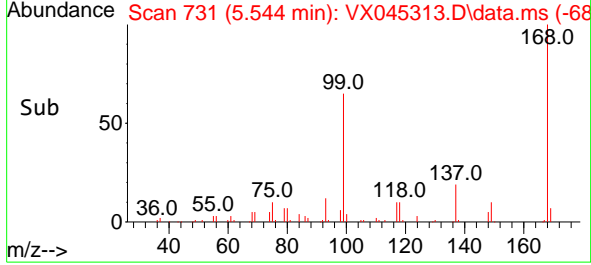


#1
 Pentafluorobenzene
 Concen: 50.000 ug/l
 RT: 5.544 min Scan# 71
 Delta R.T. -0.006 min
 Lab File: VX045313.D
 Acq: 18 Mar 2025 10:30

Instrument :
 MSVOA_X
 ClientSampleId :
 VX0318MBL01

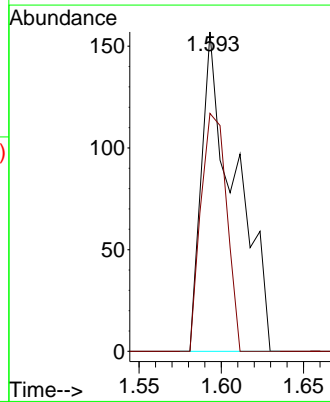
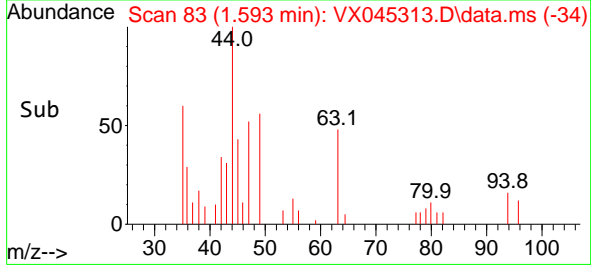
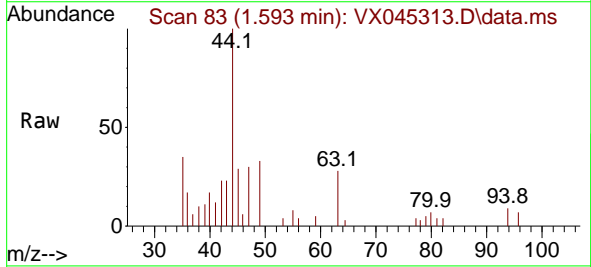


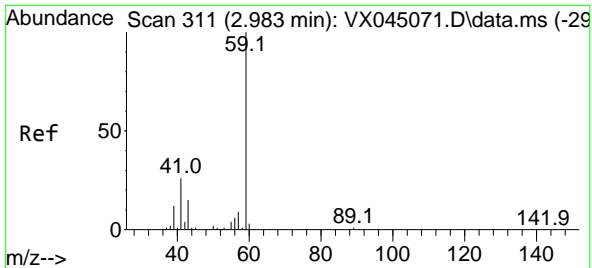
Tgt Ion:168 Resp: 70382
 Ion Ratio Lower Upper
 168 100
 99 65.4 48.2 72.4



#5
 Bromomethane
 Concen: 0.530 ug/l
 RT: 1.593 min Scan# 83
 Delta R.T. -0.000 min
 Lab File: VX045313.D
 Acq: 18 Mar 2025 10:30

Tgt Ion: 94 Resp: 224
 Ion Ratio Lower Upper
 94 100
 96 74.5 75.0 112.4#

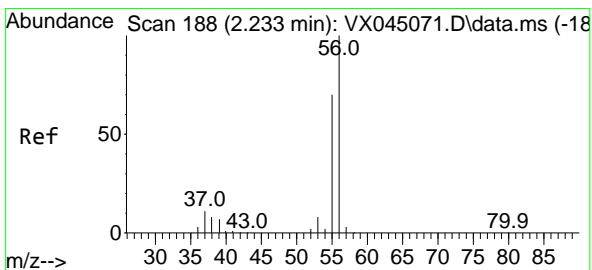
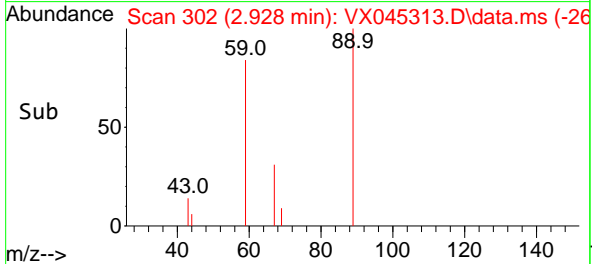
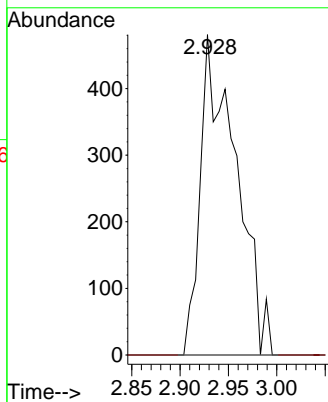
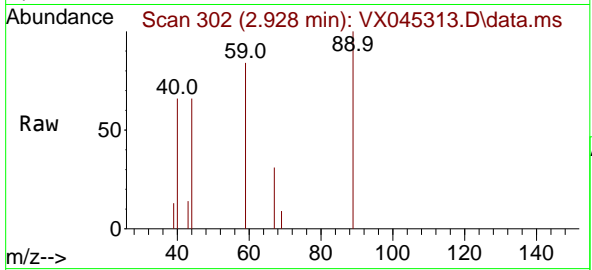




#11
 Tert butyl alcohol
 Concen: 5.781 ug/l
 RT: 2.928 min Scan# 30
 Delta R.T. -0.055 min
 Lab File: VX045313.D
 Acq: 18 Mar 2025 10:30

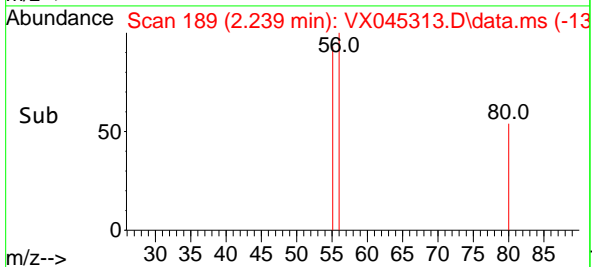
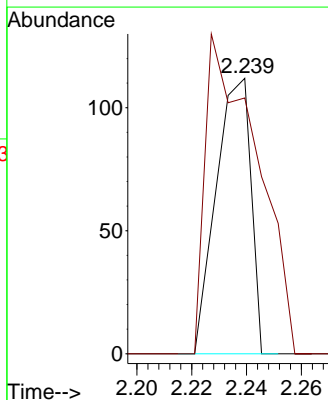
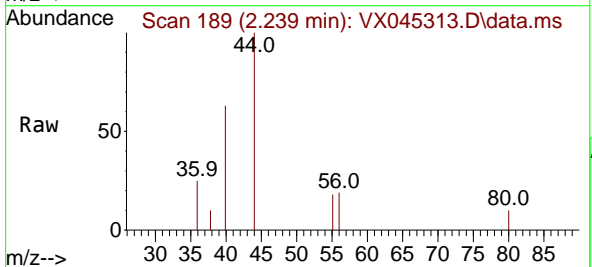
Instrument :
 MSVOA_X
 ClientSampleId :
 VX0318MBL01

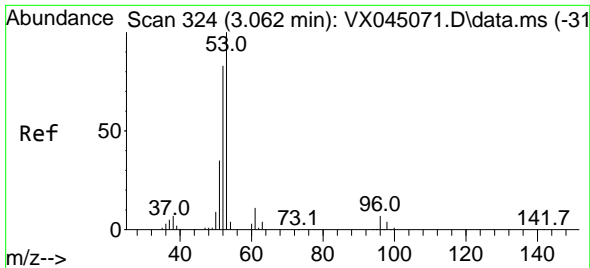
Tgt Ion: 59 Resp: 1226
 Ion Ratio Lower Upper
 59 100
 57 0.0 7.8 11.8#



#13
 Acrolein
 Concen: 0.400 ug/l
 RT: 2.239 min Scan# 189
 Delta R.T. 0.006 min
 Lab File: VX045313.D
 Acq: 18 Mar 2025 10:30

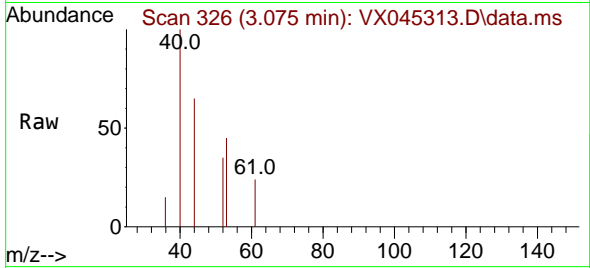
Tgt Ion: 56 Resp: 98
 Ion Ratio Lower Upper
 56 100
 55 172.4 56.2 84.4#





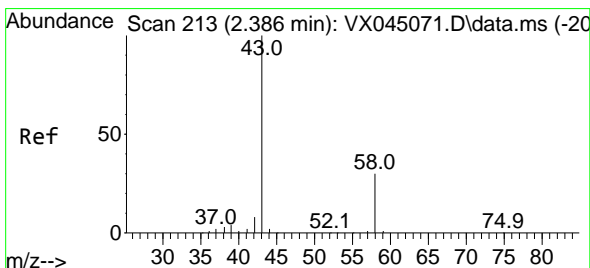
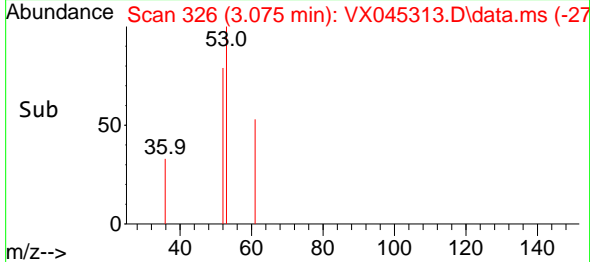
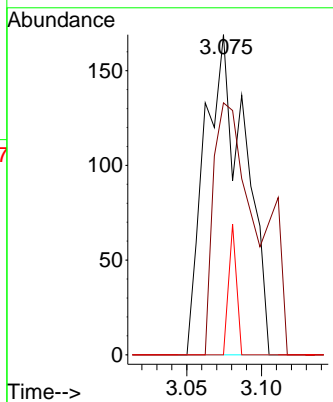
#15
 Acrylonitrile
 Concen: 0.558 ug/l
 RT: 3.075 min Scan# 317
 Delta R.T. 0.012 min
 Lab File: VX045313.D
 Acq: 18 Mar 2025 10:30

Instrument : MSVOA_X
 ClientSampleId : VX0318MBL01



Tgt Ion: 53 Resp: 317

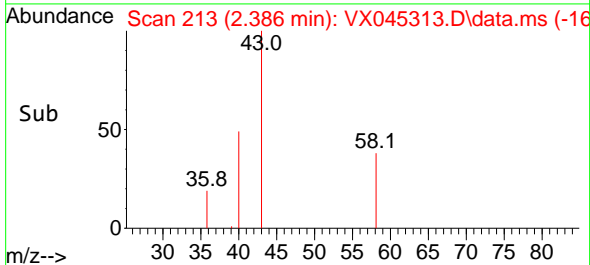
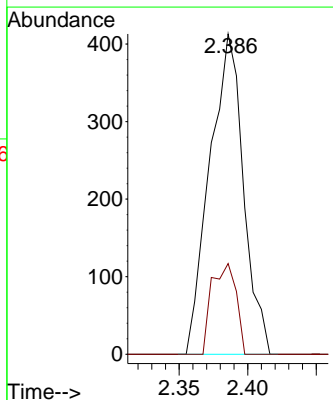
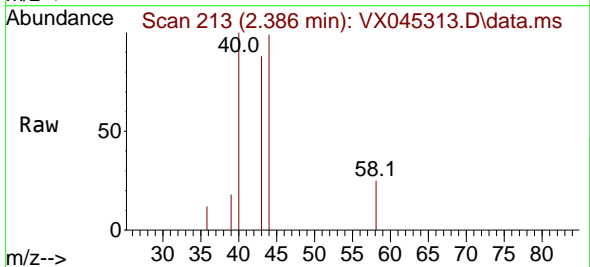
Ion	Ratio	Lower	Upper
53	100		
52	86.1	66.2	99.2
51	7.9	29.0	43.4

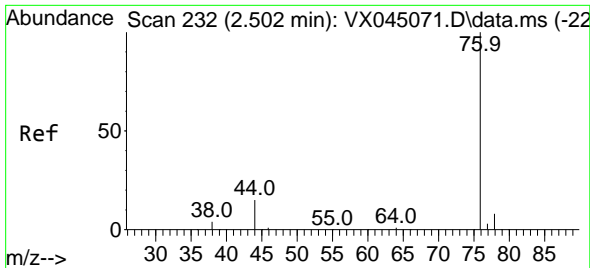


#16
 Acetone
 Concen: 1.357 ug/l
 RT: 2.386 min Scan# 213
 Delta R.T. -0.000 min
 Lab File: VX045313.D
 Acq: 18 Mar 2025 10:30

Tgt Ion: 43 Resp: 705

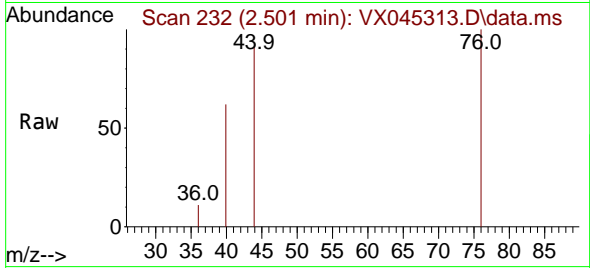
Ion	Ratio	Lower	Upper
43	100		
58	28.3	24.2	36.4



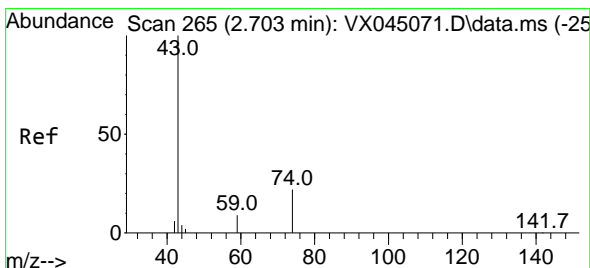
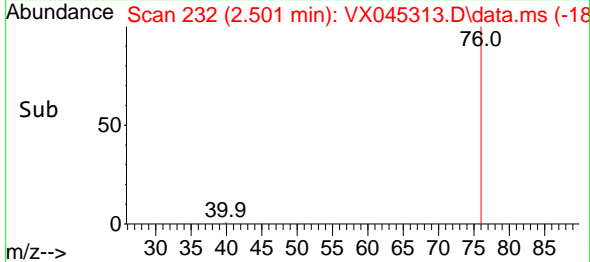
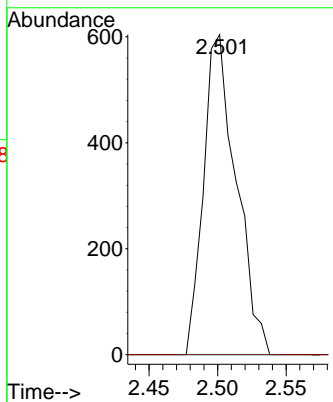


#17
 Carbon Disulfide
 Concen: 0.436 ug/l
 RT: 2.501 min Scan# 21
 Delta R.T. -0.000 min
 Lab File: VX045313.D
 Acq: 18 Mar 2025 10:30

Instrument :
 MSVOA_X
 ClientSampleId :
 VX0318MBL01

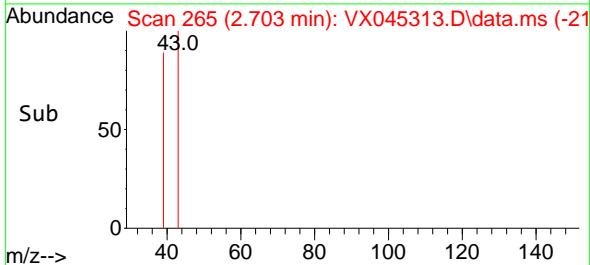
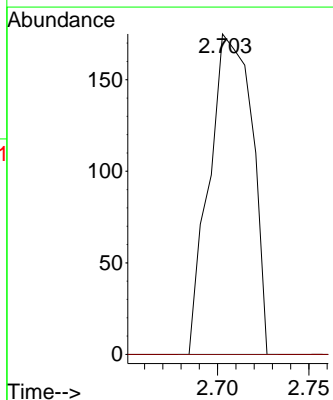
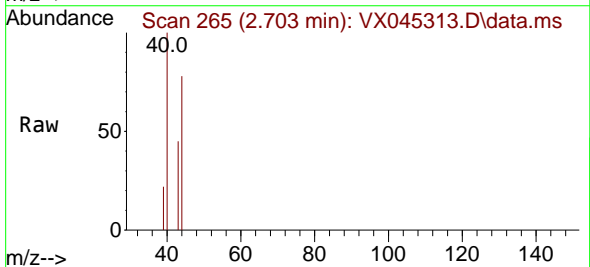


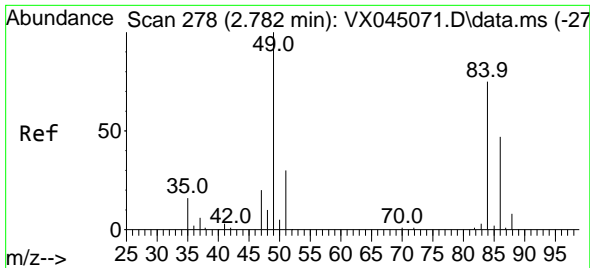
Tgt Ion: 76 Resp: 1004
 Ion Ratio Lower Upper
 76 100
 78 0.0 6.6 9.8#



#18
 Methyl Acetate
 Concen: 0.228 ug/l
 RT: 2.703 min Scan# 265
 Delta R.T. -0.000 min
 Lab File: VX045313.D
 Acq: 18 Mar 2025 10:30

Tgt Ion: 43 Resp: 285
 Ion Ratio Lower Upper
 43 100
 74 0.0 17.4 26.2#

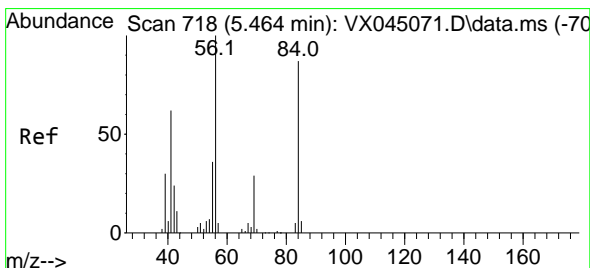
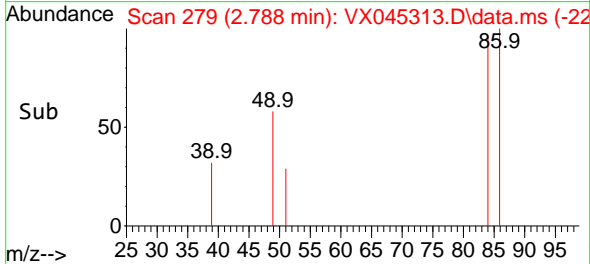
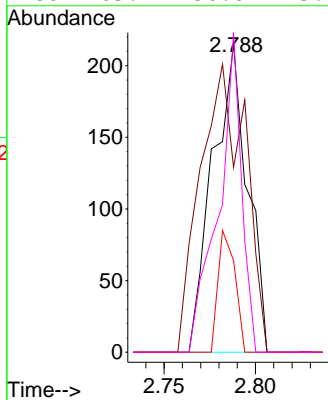
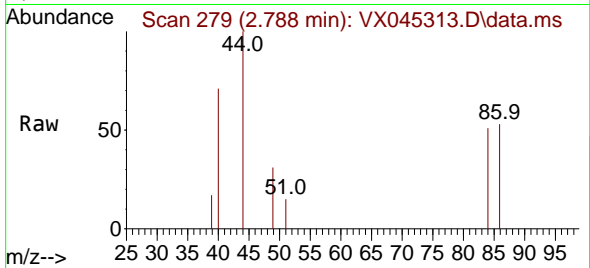




#20
 Methylene Chloride
 Concen: 0.276 ug/l
 RT: 2.788 min Scan# 21
 Delta R.T. 0.006 min
 Lab File: VX045313.D
 Acq: 18 Mar 2025 10:30

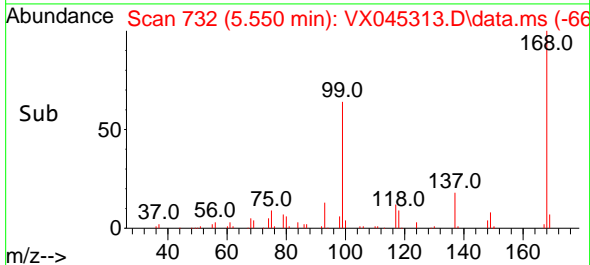
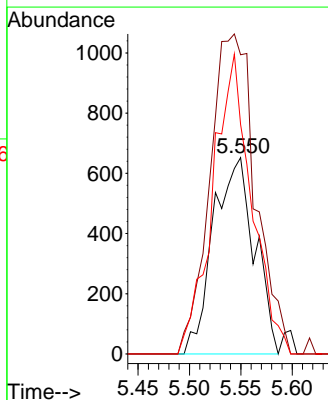
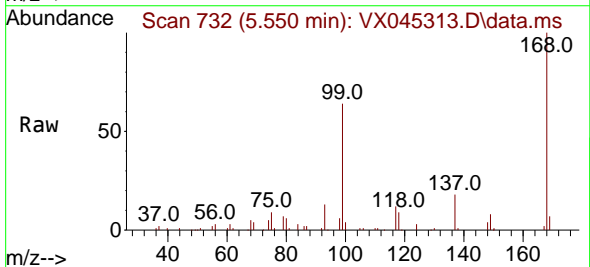
Instrument :
 MSVOA_X
 ClientSampleId :
 VX0318MBL01

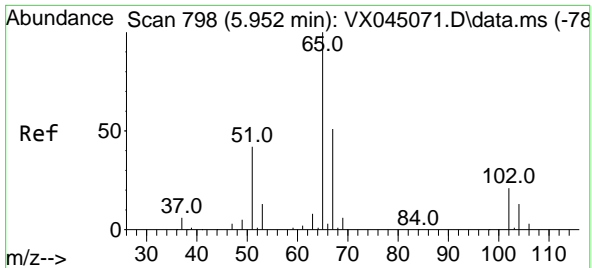
Tgt Ion	Resp	Lower	Upper
84	100		
49	60.0	106.5	159.7#
51	29.8	32.1	48.1#
86	103.7	50.0	75.0#



#31
 Cyclohexane
 Concen: 1.197 ug/l
 RT: 5.550 min Scan# 732
 Delta R.T. 0.085 min
 Lab File: VX045313.D
 Acq: 18 Mar 2025 10:30

Tgt Ion	Resp	Lower	Upper
56	100		
69	152.5	23.4	35.2#
84	116.9	69.4	104.2#





#33
 1,2-Dichloroethane-d4
 Concen: 54.539 ug/l
 RT: 5.952 min Scan# 798
 Delta R.T. -0.000 min
 Lab File: VX045313.D
 Acq: 18 Mar 2025 10:30

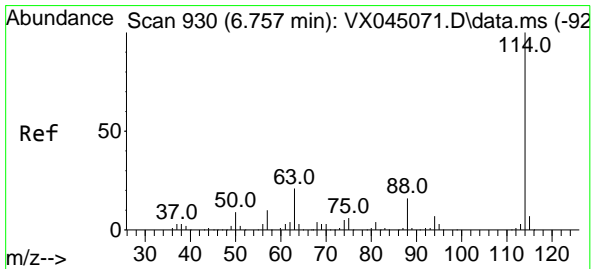
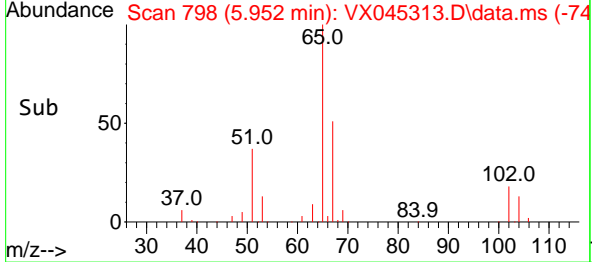
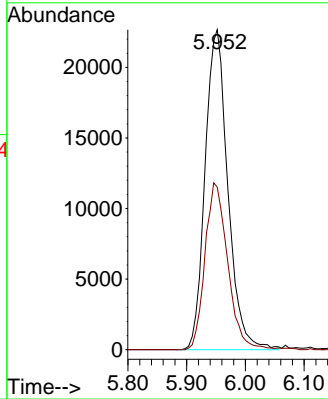
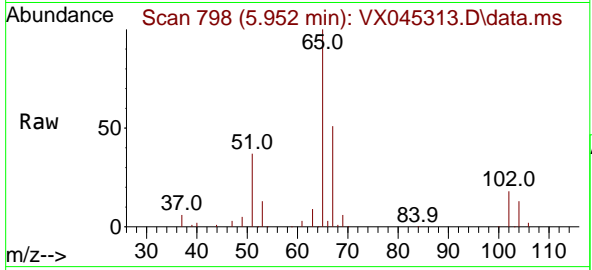
Instrument :

MSVOA_X

ClientSampleId :

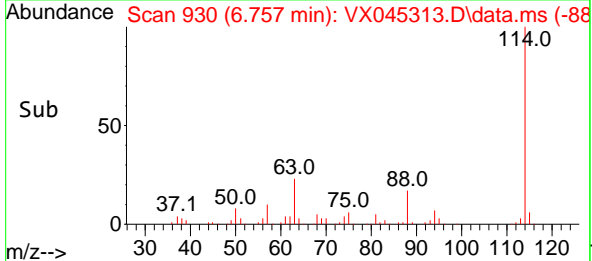
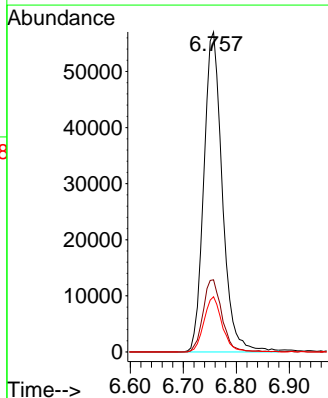
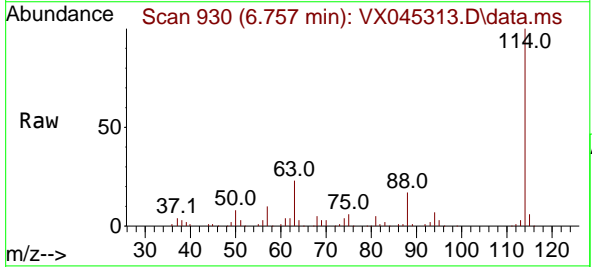
VX0318MBL01

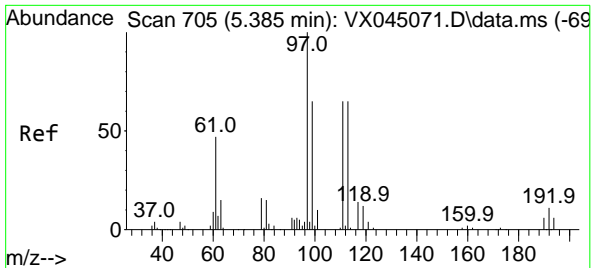
Tgt Ion: 65 Resp: 61058
 Ion Ratio Lower Upper
 65 100
 67 51.8 0.0 106.2



#34
 1,4-Difluorobenzene
 Concen: 50.000 ug/l
 RT: 6.757 min Scan# 930
 Delta R.T. -0.000 min
 Lab File: VX045313.D
 Acq: 18 Mar 2025 10:30

Tgt Ion:114 Resp: 138129
 Ion Ratio Lower Upper
 114 100
 63 22.5 0.0 41.8
 88 17.3 0.0 32.8



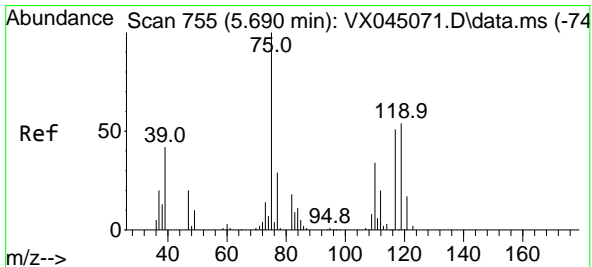
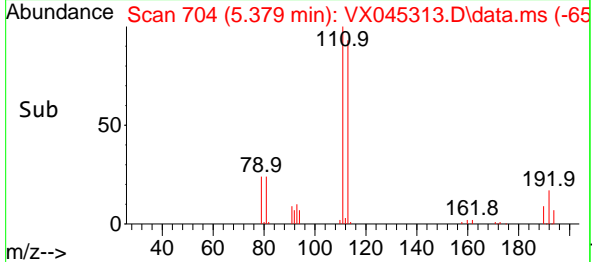
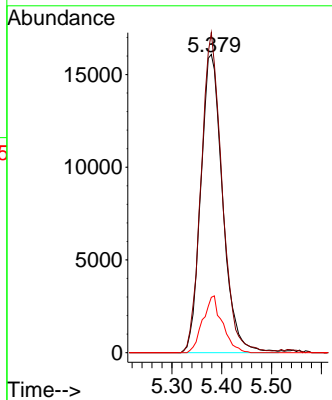
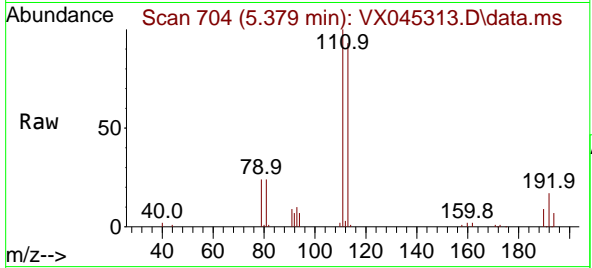


#35
 Dibromofluoromethane
 Concen: 53.039 ug/l
 RT: 5.379 min Scan# 704
 Delta R.T. -0.006 min
 Lab File: VX045313.D
 Acq: 18 Mar 2025 10:30

Instrument : MSVOA_X
 ClientSampleId : VX0318MBL01

Tgt Ion: 113 Resp: 48989

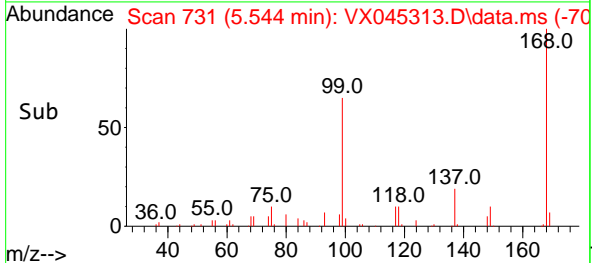
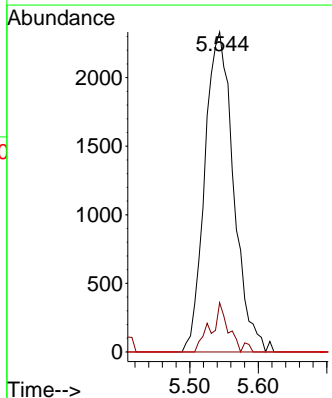
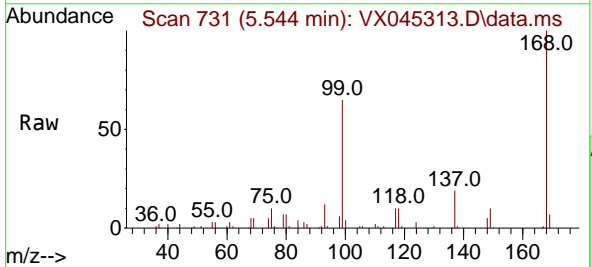
Ion	Ratio	Lower	Upper
113	100		
111	102.7	81.8	122.6
192	17.1	14.3	21.5

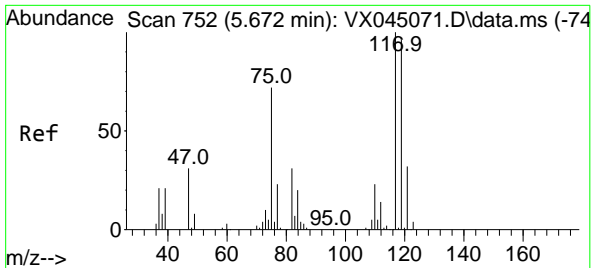


#36
 1,1-Dichloropropene
 Concen: 5.393 ug/l
 RT: 5.544 min Scan# 731
 Delta R.T. -0.146 min
 Lab File: VX045313.D
 Acq: 18 Mar 2025 10:30

Tgt Ion: 75 Resp: 6831

Ion	Ratio	Lower	Upper
75	100		
110	9.1	16.9	50.6#
77	0.0	24.5	36.7#

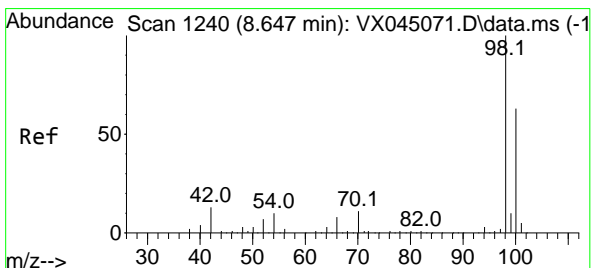
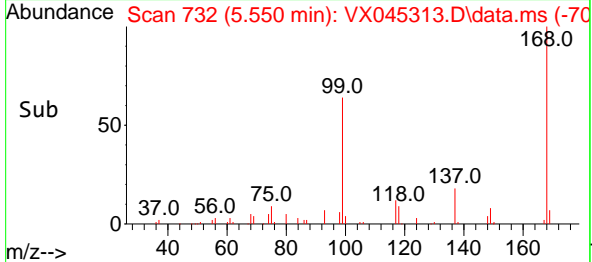
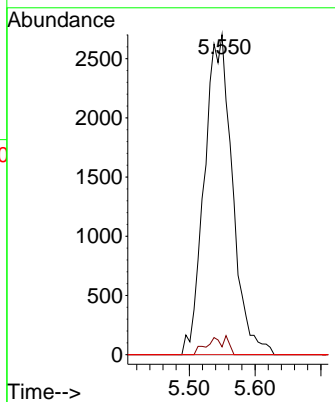
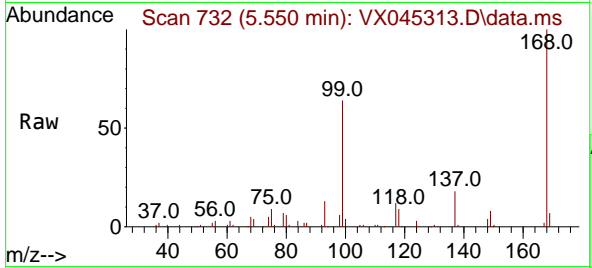




#38
 Carbon Tetrachloride
 Concen: 6.224 ug/l
 RT: 5.550 min Scan# 71
 Delta R.T. -0.122 min
 Lab File: VX045313.D
 Acq: 18 Mar 2025 10:30

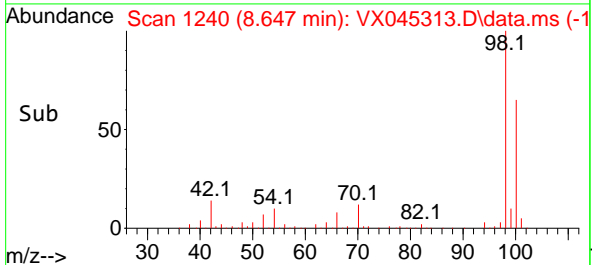
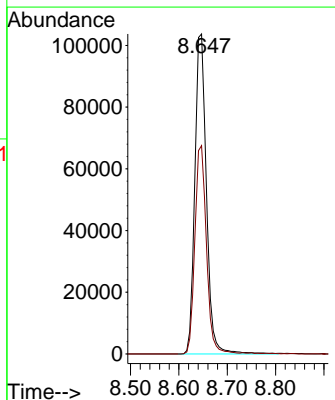
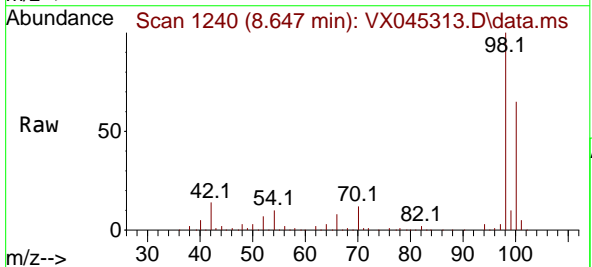
Instrument :
 MSVOA_X
 ClientSampleId :
 VX0318MBL01

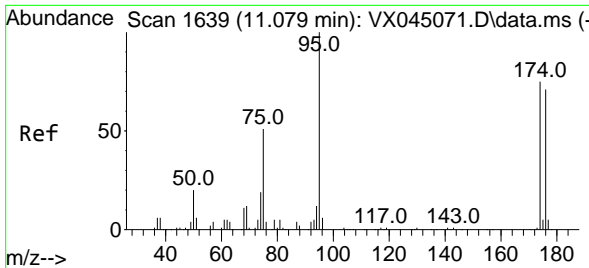
Tgt Ion:117 Resp: 8004
 Ion Ratio Lower Upper
 117 100
 119 2.5 76.7 115.1#
 121 0.0 25.5 38.3#



#50
 Toluene-d8
 Concen: 51.454 ug/l
 RT: 8.647 min Scan# 1240
 Delta R.T. -0.000 min
 Lab File: VX045313.D
 Acq: 18 Mar 2025 10:30

Tgt Ion: 98 Resp: 172294
 Ion Ratio Lower Upper
 98 100
 100 64.9 52.0 78.0

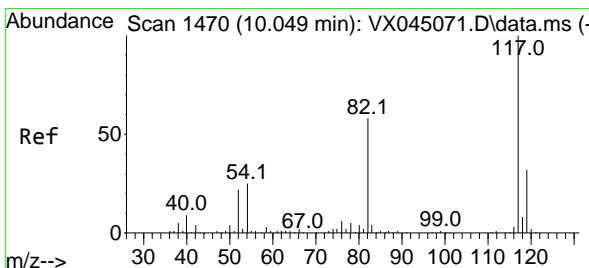
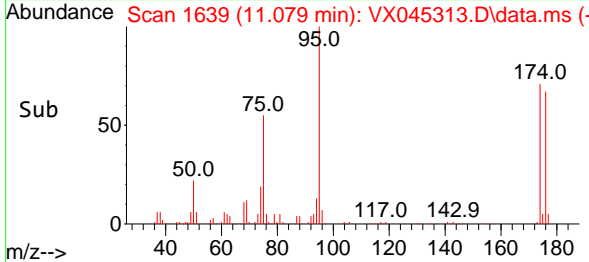
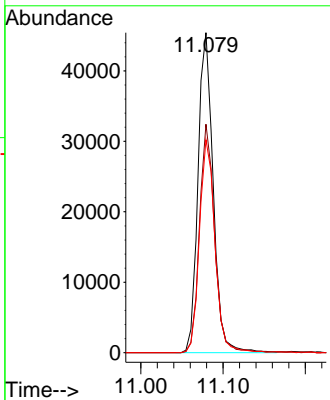
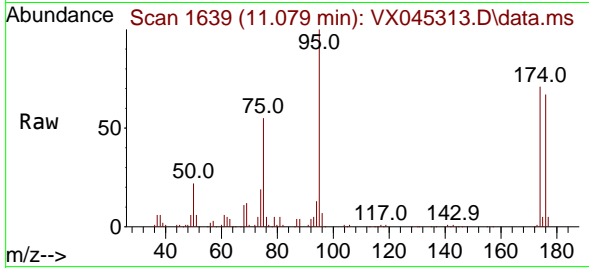




#62
 4-Bromofluorobenzene
 Concen: 52.619 ug/l
 RT: 11.079 min Scan# 1639
 Delta R.T. -0.000 min
 Lab File: VX045313.D
 Acq: 18 Mar 2025 10:30

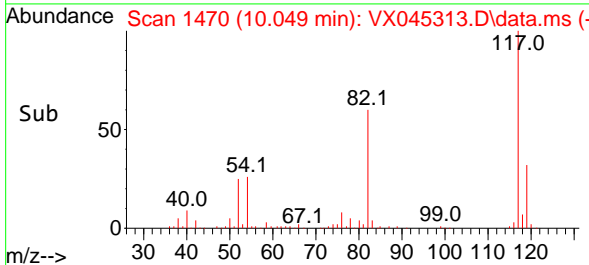
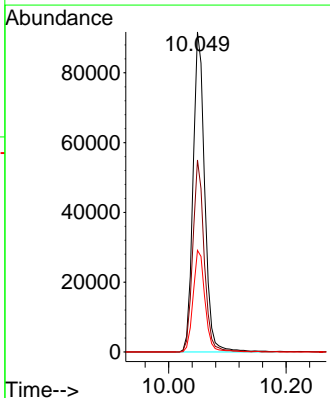
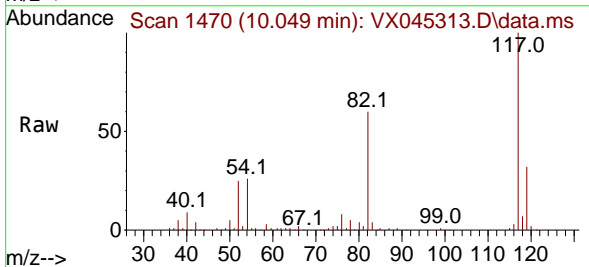
Instrument : MSVOA_X
 ClientSampleId : VX0318MBL01

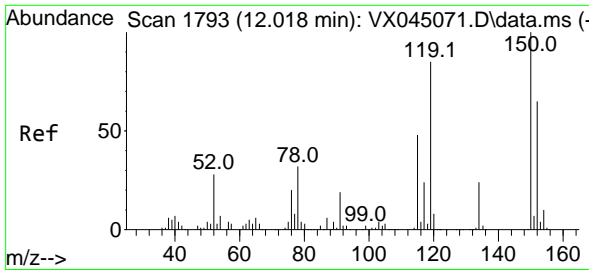
Tgt Ion	Resp	Lower	Upper
95	58385	100	
174	71.2	0.0	148.2
176	67.9	0.0	141.4



#63
 Chlorobenzene-d5
 Concen: 50.000 ug/l
 RT: 10.049 min Scan# 1470
 Delta R.T. -0.000 min
 Lab File: VX045313.D
 Acq: 18 Mar 2025 10:30

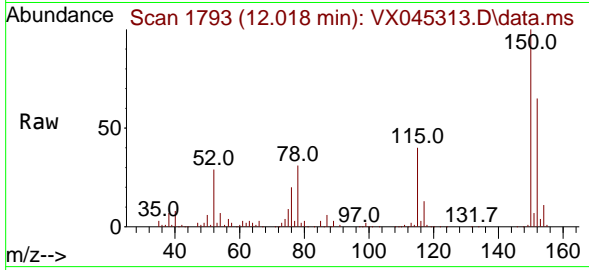
Tgt Ion	Resp	Lower	Upper
117	126332	100	
82	60.0	46.3	69.5
119	31.7	25.7	38.5



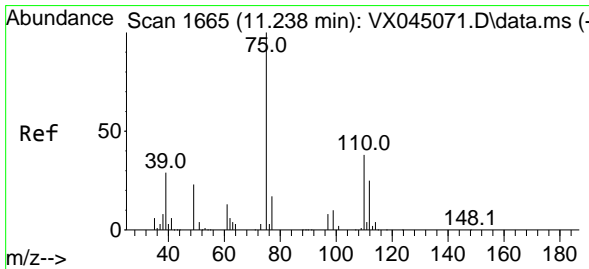
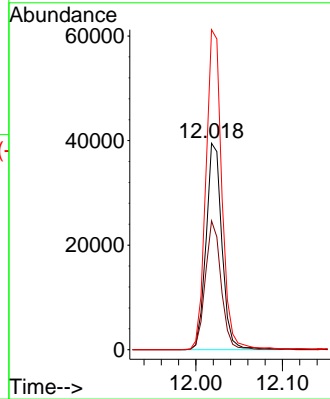
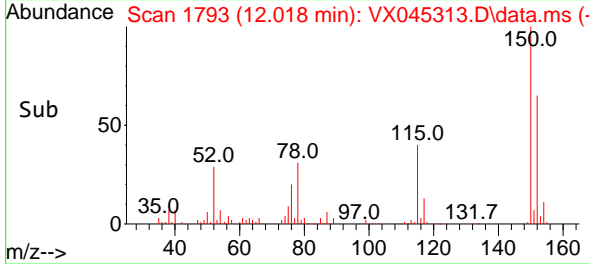


#72
 1,4-Dichlorobenzene-d4
 Concen: 50.000 ug/l
 RT: 12.018 min Scan# 1
 Delta R.T. -0.000 min
 Lab File: VX045313.D
 Acq: 18 Mar 2025 10:30

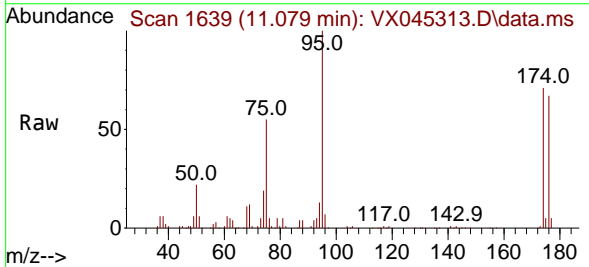
Instrument :
 MSVOA_X
 ClientSampleId :
 VX0318MBL01



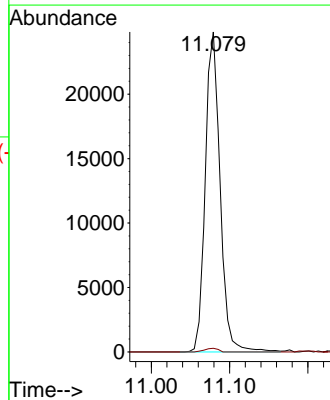
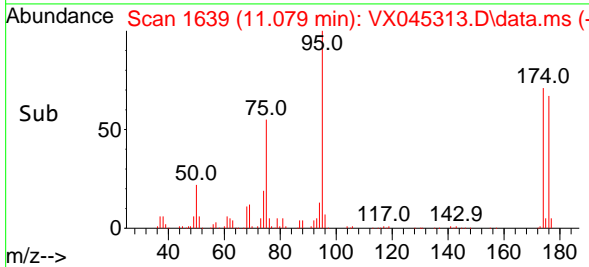
Tgt Ion:152 Resp: 50223
 Ion Ratio Lower Upper
 152 100
 115 62.2 44.2 132.6
 150 156.3 0.0 349.0

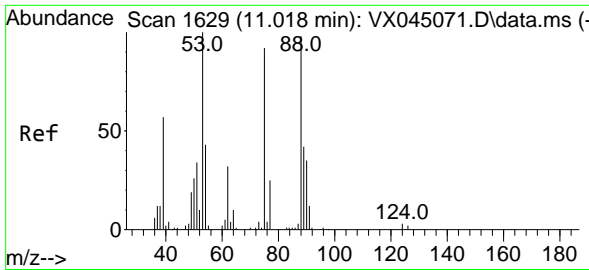


#76
 1,2,3-Trichloropropane
 Concen: 27.841 ug/l
 RT: 11.079 min Scan# 1639
 Delta R.T. -0.159 min
 Lab File: VX045313.D
 Acq: 18 Mar 2025 10:30



Tgt Ion: 75 Resp: 32545
 Ion Ratio Lower Upper
 75 100
 77 1.0 20.7 62.1#

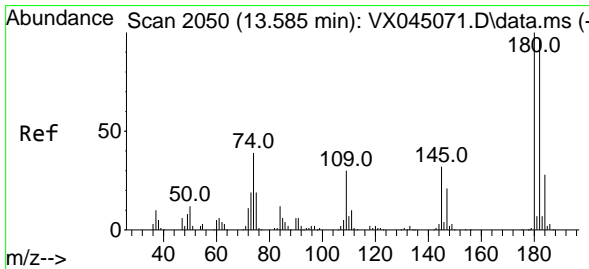
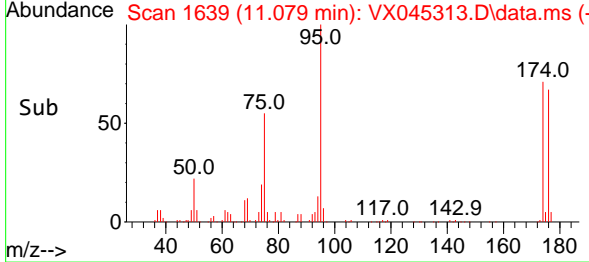
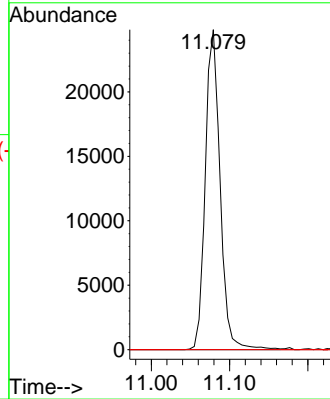
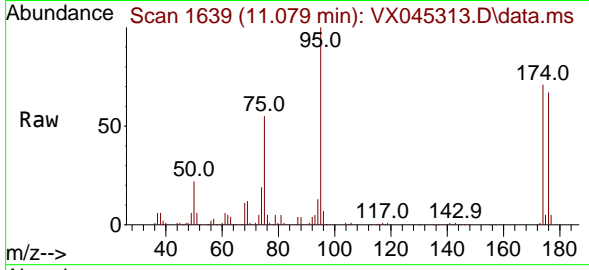




#81
 trans-1,4-Dichloro-2-butene
 Concen: 95.278 ug/l
 RT: 11.079 min Scan# 1639
 Delta R.T. 0.061 min
 Lab File: VX045313.D
 Acq: 18 Mar 2025 10:30

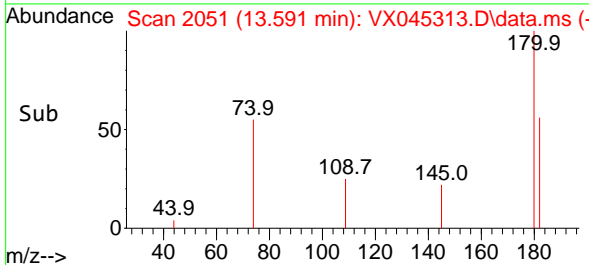
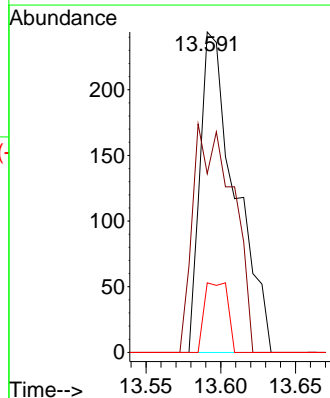
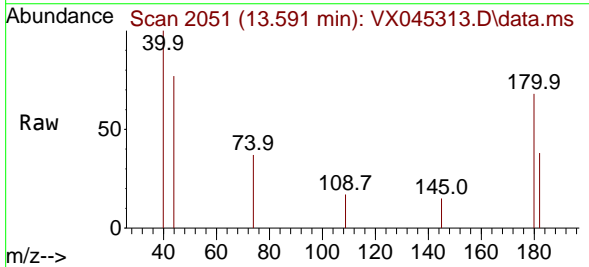
Instrument :
 MSVOA_X
 ClientSampleId :
 VX0318MBL01

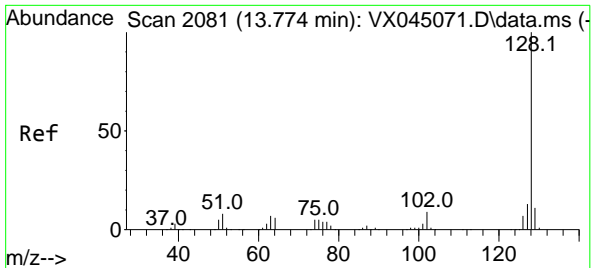
Tgt Ion: 75 Resp: 32545
 Ion Ratio Lower Upper
 75 100
 53 0.0 88.5 132.7#
 89 0.0 36.2 54.4#



#93
 1,2,4-Trichlorobenzene
 Concen: 0.422 ug/l
 RT: 13.591 min Scan# 2051
 Delta R.T. 0.006 min
 Lab File: VX045313.D
 Acq: 18 Mar 2025 10:30

Tgt Ion:180 Resp: 398
 Ion Ratio Lower Upper
 180 100
 182 80.9 47.3 141.9
 145 14.3 16.3 48.9#



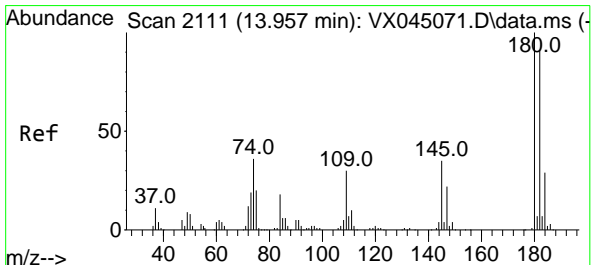
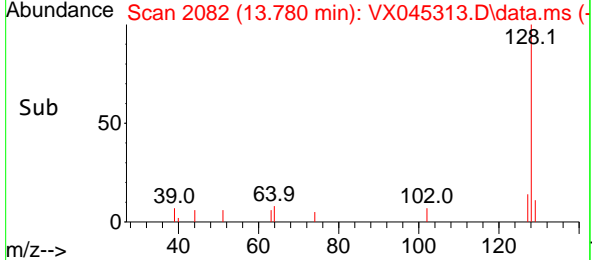
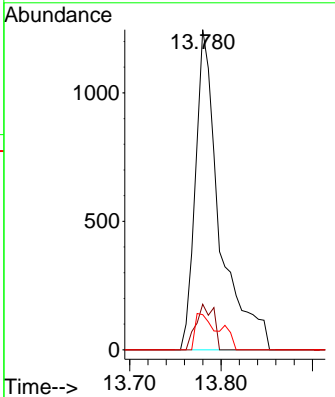
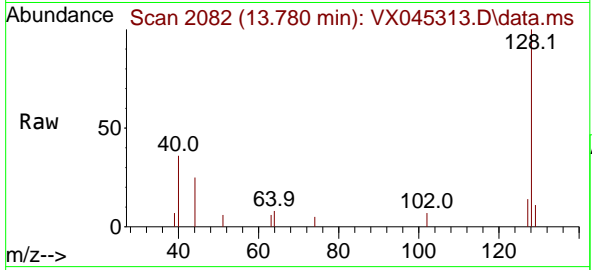


#95
 Naphthalene
 Concen: 0.634 ug/l
 RT: 13.780 min Scan# 2081
 Delta R.T. 0.006 min
 Lab File: VX045313.D
 Acq: 18 Mar 2025 10:30

Instrument : MSVOA_X
 ClientSampleId : VX0318MBL01

Tgt Ion:128 Resp: 2297

Ion	Ratio	Lower	Upper
128	100		
127	10.3	10.3	15.5#
129	11.1	8.7	13.1



#96
 1,2,3-Trichlorobenzene
 Concen: 0.443 ug/l
 RT: 13.963 min Scan# 2112
 Delta R.T. 0.006 min
 Lab File: VX045313.D
 Acq: 18 Mar 2025 10:30

Tgt Ion:180 Resp: 440

Ion	Ratio	Lower	Upper
180	100		
182	96.4	47.5	142.6
145	30.9	17.0	50.9

