

Data Path : Z:\voasrv\HPCHEM1\MSVOA_X\Data\VX031825\
 Data File : VX045318.D
 Acq On : 18 Mar 2025 12:30
 Operator : JC/MD
 Sample : Q1559-01DL 10X
 Misc : 5.0mL/MSVOA_X/WATER
 ALS Vial : 8 Sample Multiplier: 1

Instrument :
 MSVOA_X
 ClientSampleId :
 RE115D1-20250310DL

Quant Time: Mar 19 01:42:45 2025
 Quant Method : Z:\voasrv\HPCHEM1\MSVOA_X\Method\82X022825W.M
 Quant Title : SW846 8260
 QLast Update : Fri Feb 28 06:45:16 2025
 Response via : Initial Calibration

Compound	R.T.	QIon	Response	Conc	Units	Dev(Min)

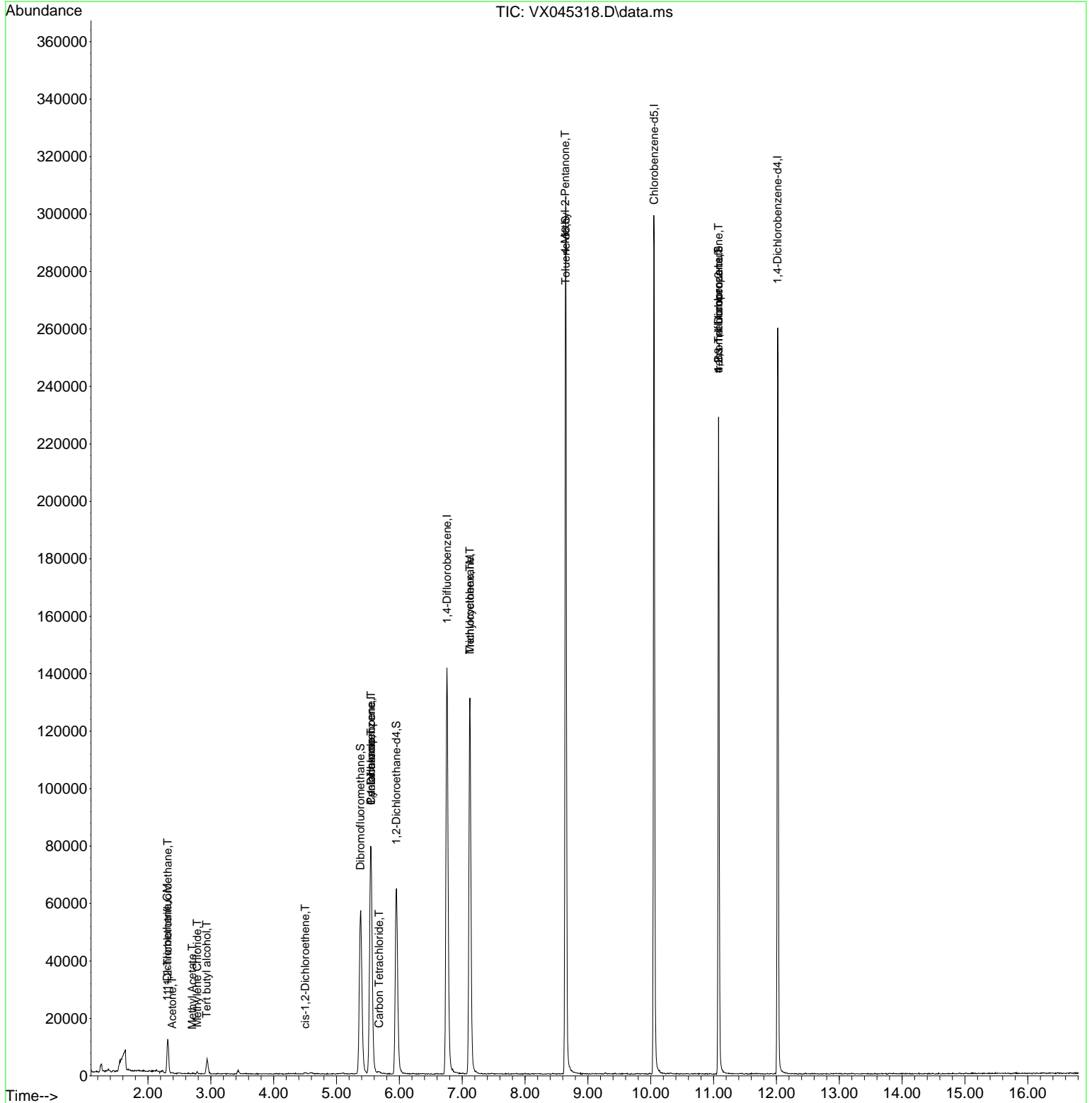
Internal Standards						
1) Pentafluorobenzene	5.550	168	71358	50.000	ug/l	0.00
34) 1,4-Difluorobenzene	6.757	114	141612	50.000	ug/l	0.00
63) Chlorobenzene-d5	10.055	117	127488	50.000	ug/l	0.00
72) 1,4-Dichlorobenzene-d4	12.018	152	50596	50.000	ug/l	0.00
System Monitoring Compounds						
33) 1,2-Dichloroethane-d4	5.952	65	63359	55.820	ug/l	0.00
Spiked Amount	50.000	Range 74 - 125	Recovery	=	111.640%	
35) Dibromofluoromethane	5.379	113	49906	52.703	ug/l	0.00
Spiked Amount	50.000	Range 75 - 124	Recovery	=	105.400%	
50) Toluene-d8	8.647	98	174877	50.941	ug/l	0.00
Spiked Amount	50.000	Range 86 - 113	Recovery	=	101.880%	
62) 4-Bromofluorobenzene	11.079	95	59543	52.342	ug/l	0.00
Spiked Amount	50.000	Range 77 - 121	Recovery	=	104.680%	
Target Compounds						
						Qvalue
9) 1,1,2-Trichlorotrifluo...	2.313	101	3767	4.542	ug/l	95
11) Tert butyl alcohol	2.935	59	2717	12.637	ug/l #	73
12) 1,1-Dichloroethene	2.307	96	1050	1.197	ug/l	92
16) Acetone	2.386	43	394	0.748	ug/l #	44
18) Methyl Acetate	2.703	43	285	0.225	ug/l #	54
20) Methylene Chloride	2.782	84	242	0.232	ug/l	88
27) cis-1,2-Dichloroethene	4.501	96	253	0.237	ug/l	98
31) Cyclohexane	5.550	56	2076	1.344	ug/l #	23
36) 1,1-Dichloropropene	5.550	75	6692	5.153	ug/l #	50
38) Carbon Tetrachloride	5.678	117	482	0.366	ug/l #	67
39) Methylcyclohexane	7.123	83	699	0.449	ug/l #	1
44) Trichloroethene	7.123	130	49035	50.925	ug/l	97
51) 4-Methyl-2-Pentanone	8.641	43	852	0.513	ug/l #	1
76) 1,2,3-Trichloropropane	11.079	75	32703	27.770	ug/l #	36
81) trans-1,4-Dichloro-2-b...	11.079	75	32703	95.035	ug/l #	6

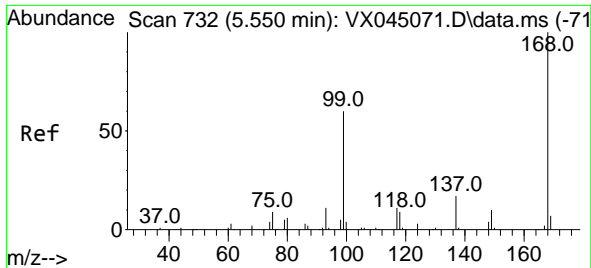
(#) = qualifier out of range (m) = manual integration (+) = signals summed

Data Path : Z:\voasrv\HPCHEM1\MSVOA_X\Data\VX031825\
 Data File : VX045318.D
 Acq On : 18 Mar 2025 12:30
 Operator : JC/MD
 Sample : Q1559-01DL 10X
 Misc : 5.0mL/MSVOA_X/WATER
 ALS Vial : 8 Sample Multiplier: 1

Instrument :
 MSVOA_X
ClientSampleId :
 RE115D1-20250310DL

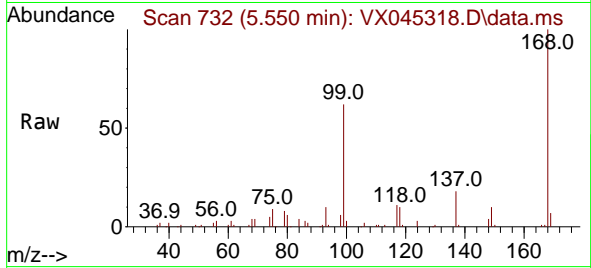
Quant Time: Mar 19 01:42:45 2025
 Quant Method : Z:\voasrv\HPCHEM1\MSVOA_X\Method\82X022825W.M
 Quant Title : SW846 8260
 QLast Update : Fri Feb 28 06:45:16 2025
 Response via : Initial Calibration



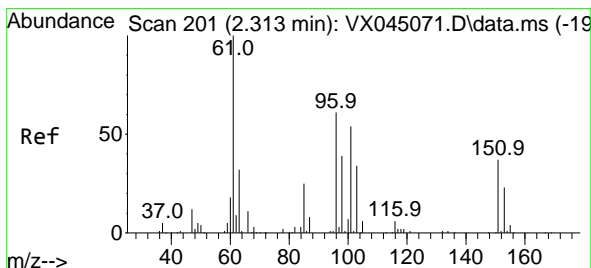
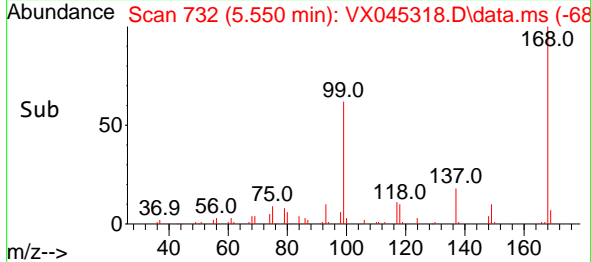
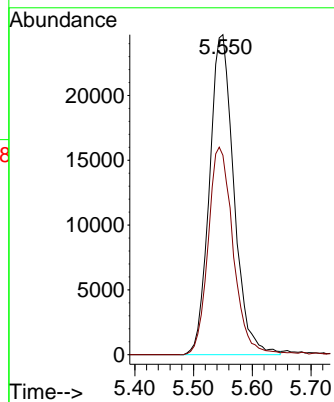


#1
 Pentafluorobenzene
 Concen: 50.000 ug/l
 RT: 5.550 min Scan# 71
 Delta R.T. -0.000 min
 Lab File: VX045318.D
 Acq: 18 Mar 2025 12:30

Instrument : MSVOA_X
 ClientSampleId : RE115D1-20250310DL

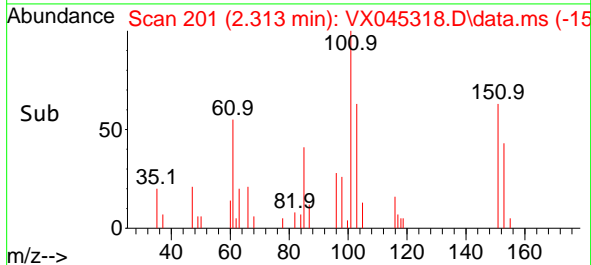
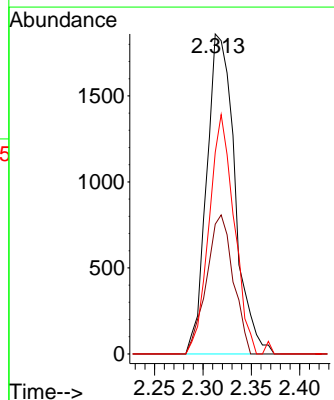
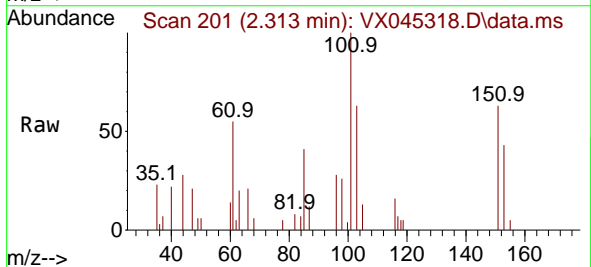


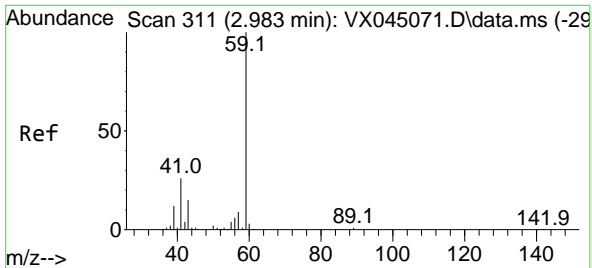
Tgt Ion:168 Resp: 71358
 Ion Ratio Lower Upper
 168 100
 99 62.3 48.2 72.4



#9
 1,1,2-Trichlorotrifluoroethane
 Concen: 4.542 ug/l
 RT: 2.313 min Scan# 201
 Delta R.T. 0.000 min
 Lab File: VX045318.D
 Acq: 18 Mar 2025 12:30

Tgt Ion:101 Resp: 3767
 Ion Ratio Lower Upper
 101 100
 85 41.3 36.2 54.4
 151 66.7 56.4 84.6

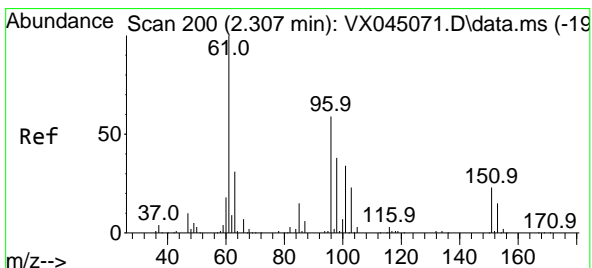
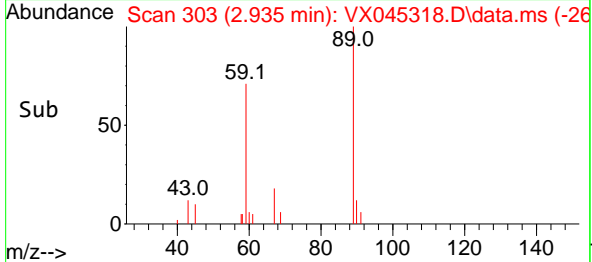
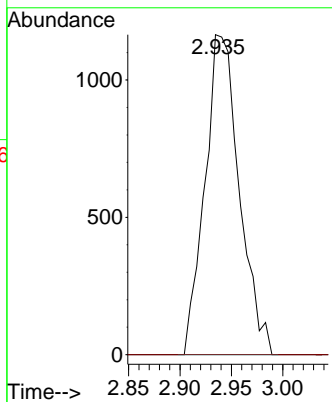
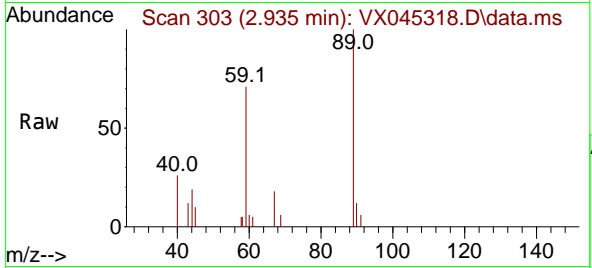




#11
 Tert butyl alcohol
 Concen: 12.637 ug/l
 RT: 2.935 min Scan# 30
 Delta R.T. -0.049 min
 Lab File: VX045318.D
 Acq: 18 Mar 2025 12:30

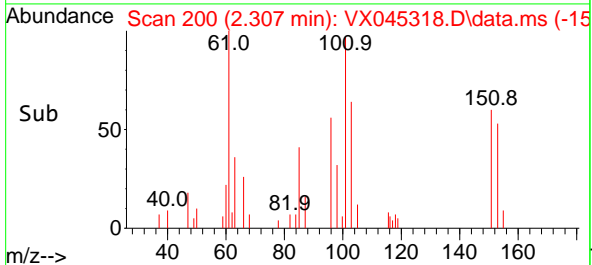
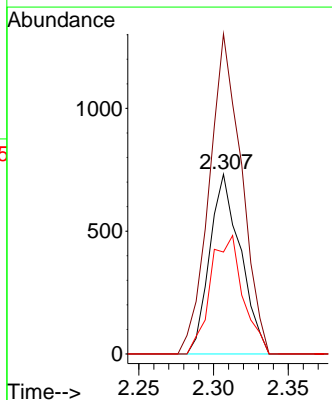
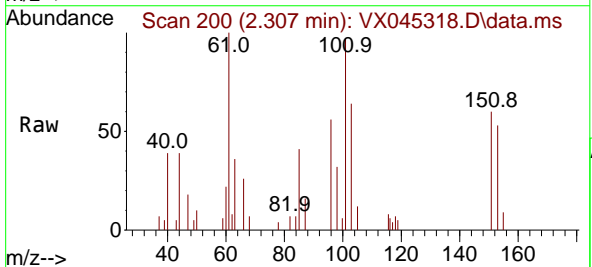
Instrument : MSVOA_X
 ClientSampleId : RE115D1-20250310DL

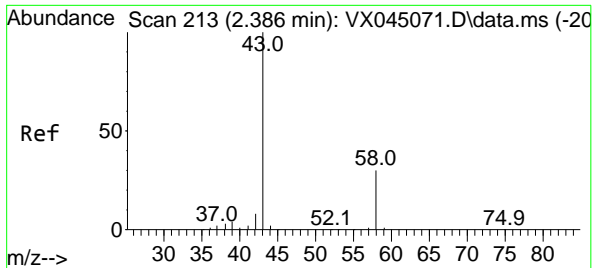
Tgt Ion: 59 Resp: 2717
 Ion Ratio Lower Upper
 59 100
 57 0.0 7.8 11.8#



#12
 1,1-Dichloroethene
 Concen: 1.197 ug/l
 RT: 2.307 min Scan# 200
 Delta R.T. 0.000 min
 Lab File: VX045318.D
 Acq: 18 Mar 2025 12:30

Tgt Ion: 96 Resp: 1050
 Ion Ratio Lower Upper
 96 100
 61 178.0 134.6 202.0
 98 56.7 51.0 76.6

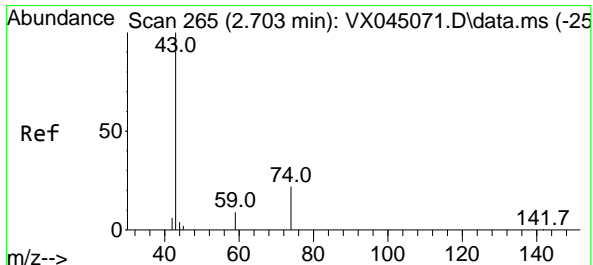
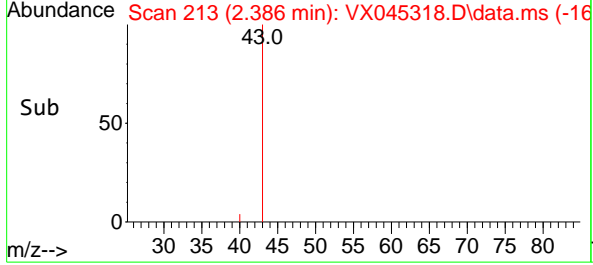
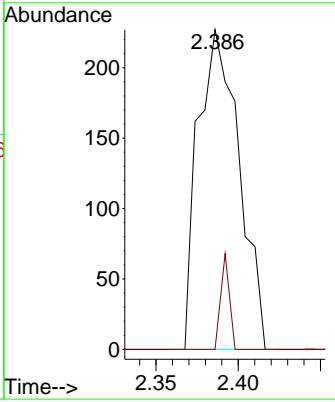
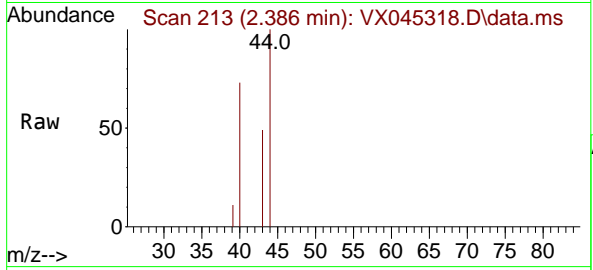




#16
 Acetone
 Concen: 0.748 ug/l
 RT: 2.386 min Scan# 216
 Delta R.T. 0.000 min
 Lab File: VX045318.D
 Acq: 18 Mar 2025 12:30

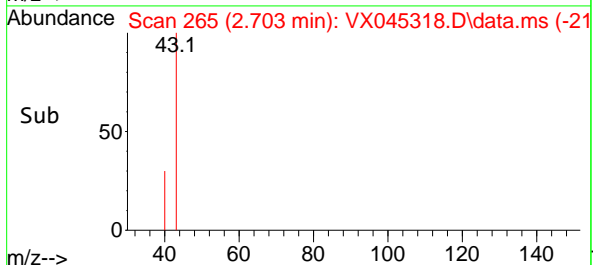
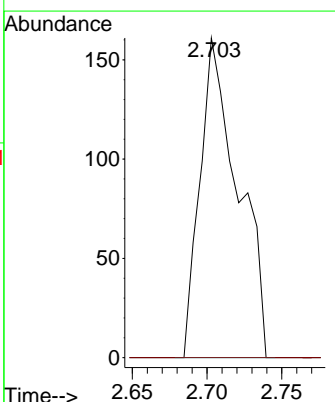
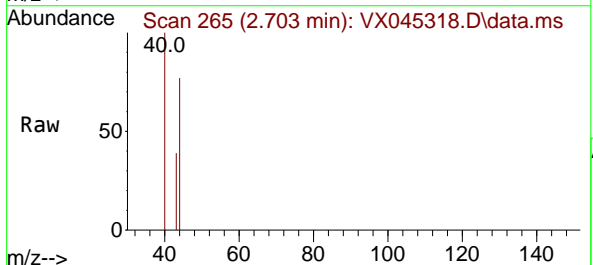
Instrument : MSVOA_X
 ClientSampleId : RE115D1-20250310DL

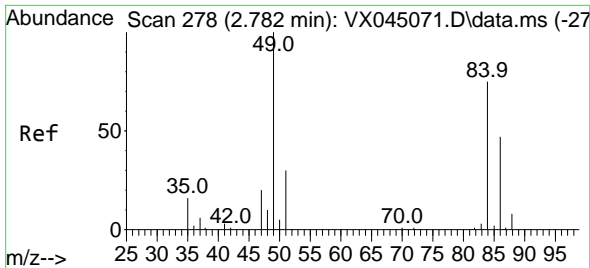
Tgt Ion: 43 Resp: 394
 Ion Ratio Lower Upper
 43 100
 58 0.0 24.2 36.4#



#18
 Methyl Acetate
 Concen: 0.225 ug/l
 RT: 2.703 min Scan# 265
 Delta R.T. 0.000 min
 Lab File: VX045318.D
 Acq: 18 Mar 2025 12:30

Tgt Ion: 43 Resp: 285
 Ion Ratio Lower Upper
 43 100
 74 0.0 17.4 26.2#

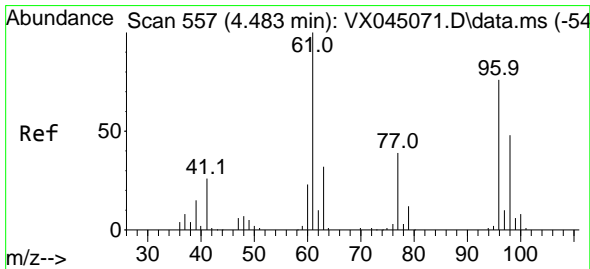
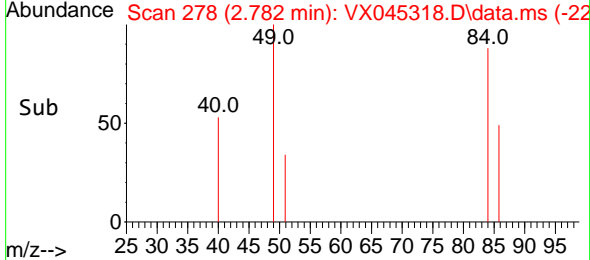
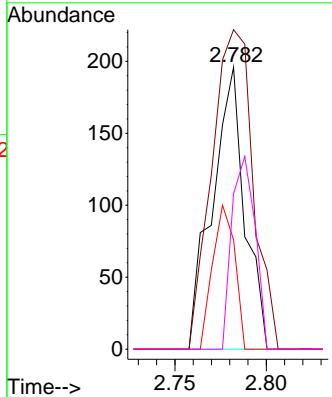
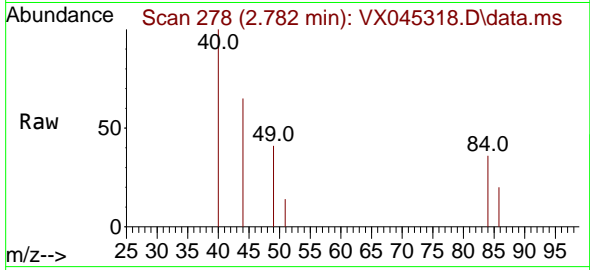




#20
 Methylene Chloride
 Concen: 0.232 ug/l
 RT: 2.782 min Scan# 21
 Delta R.T. 0.000 min
 Lab File: VX045318.D
 Acq: 18 Mar 2025 12:30

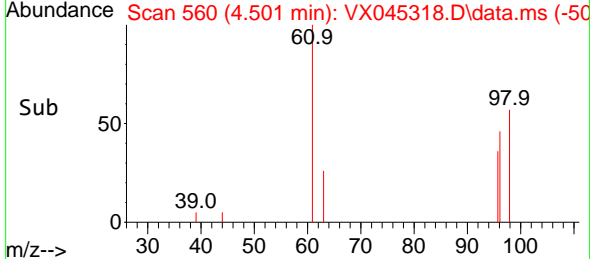
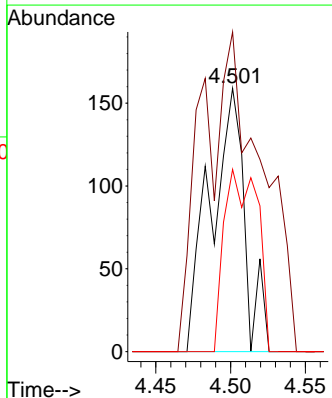
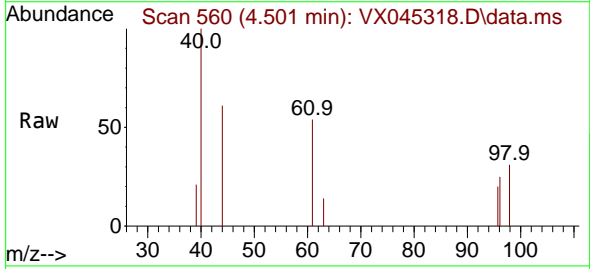
Instrument : MSVOA_X
 ClientSampleId : RE115D1-20250310DL

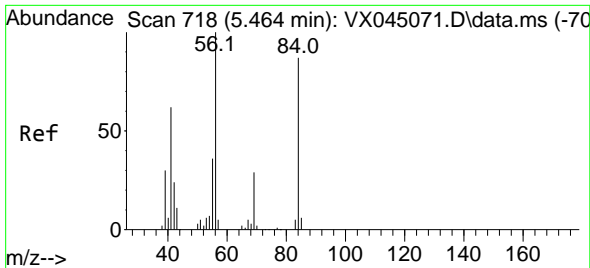
Tgt Ion	Resp	Lower	Upper
84	100		
49	113.3	106.5	159.7
51	38.8	32.1	48.1
86	55.1	50.0	75.0



#27
 cis-1,2-Dichloroethene
 Concen: 0.237 ug/l
 RT: 4.501 min Scan# 560
 Delta R.T. 0.018 min
 Lab File: VX045318.D
 Acq: 18 Mar 2025 12:30

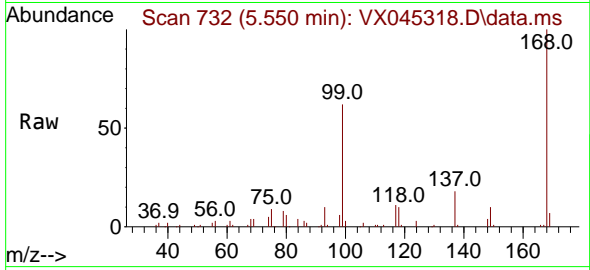
Tgt Ion	Resp	Lower	Upper
96	100		
61	143.1	0.0	283.2
98	67.6	0.0	128.0



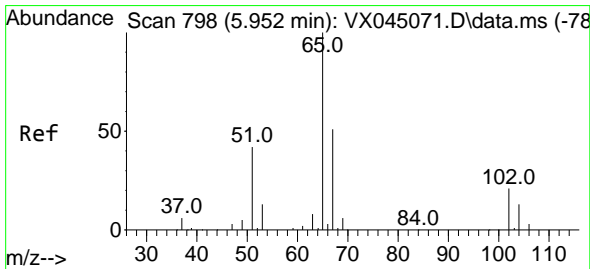
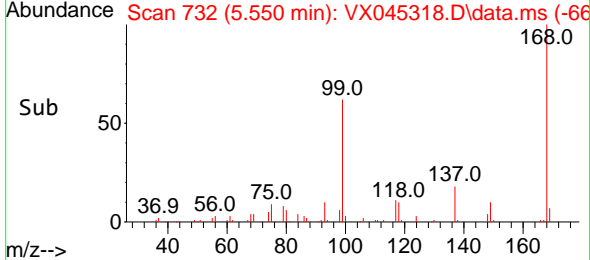
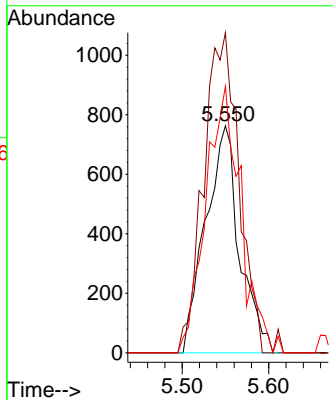


#31
 Cyclohexane
 Concen: 1.344 ug/l
 RT: 5.550 min Scan# 718
 Delta R.T. 0.085 min
 Lab File: VX045318.D
 Acq: 18 Mar 2025 12:30

Instrument : MSVOA_X
 ClientSampleId : RE115D1-20250310DL

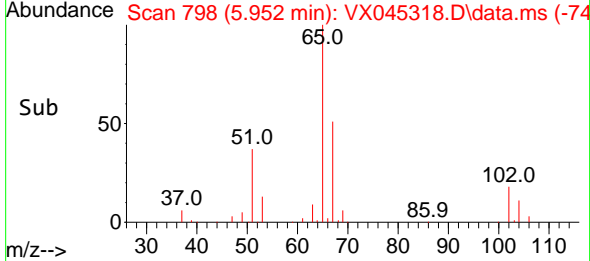
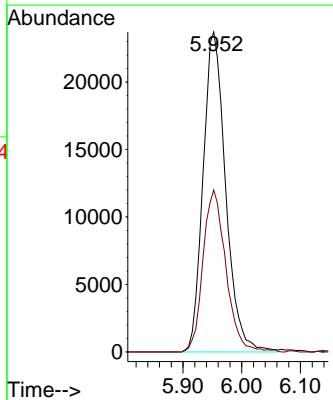
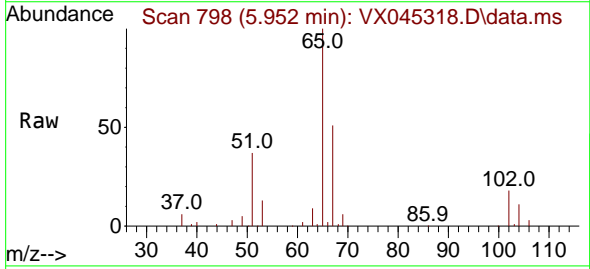


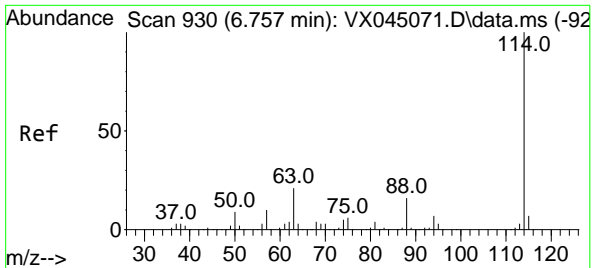
Tgt Ion: 56 Resp: 2076
 Ion Ratio Lower Upper
 56 100
 69 141.0 23.4 35.2#
 84 117.4 69.4 104.2#



#33
 1,2-Dichloroethane-d4
 Concen: 55.820 ug/l
 RT: 5.952 min Scan# 798
 Delta R.T. 0.000 min
 Lab File: VX045318.D
 Acq: 18 Mar 2025 12:30

Tgt Ion: 65 Resp: 63359
 Ion Ratio Lower Upper
 65 100
 67 51.3 0.0 106.2

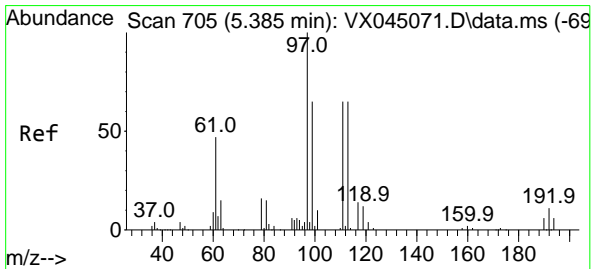
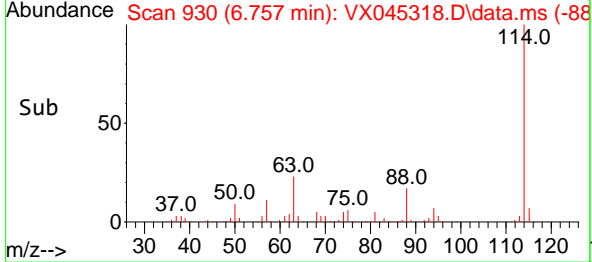
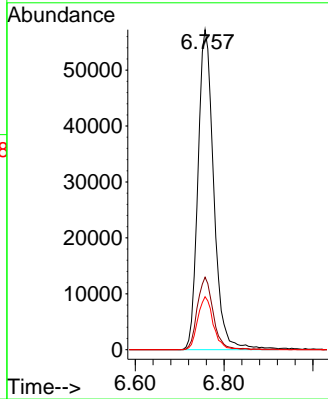
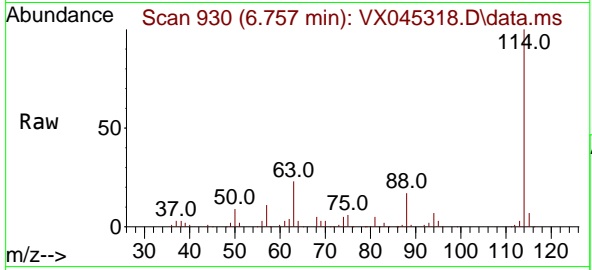




#34
 1,4-Difluorobenzene
 Concen: 50.000 ug/l
 RT: 6.757 min Scan# 91
 Delta R.T. 0.000 min
 Lab File: VX045318.D
 Acq: 18 Mar 2025 12:30

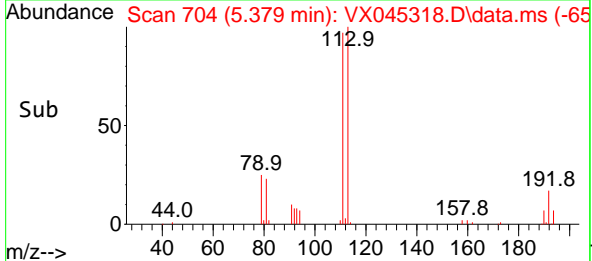
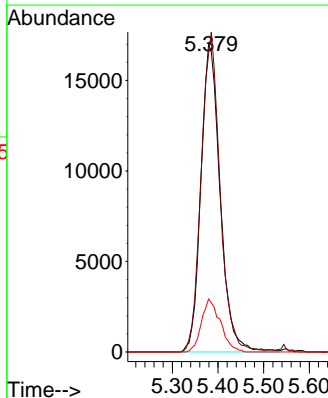
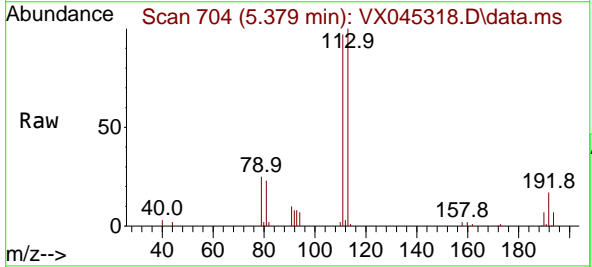
Instrument : MSVOA_X
 ClientSampleId : RE115D1-20250310DL

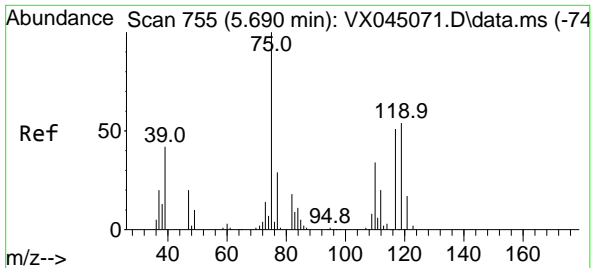
Tgt Ion	Resp	Lower	Upper
114	141612		
63	22.6	0.0	41.8
88	16.5	0.0	32.8



#35
 Dibromofluoromethane
 Concen: 52.703 ug/l
 RT: 5.379 min Scan# 704
 Delta R.T. -0.006 min
 Lab File: VX045318.D
 Acq: 18 Mar 2025 12:30

Tgt Ion	Resp	Lower	Upper
113	49906		
113	100		
111	101.5	81.8	122.6
192	16.8	14.3	21.5

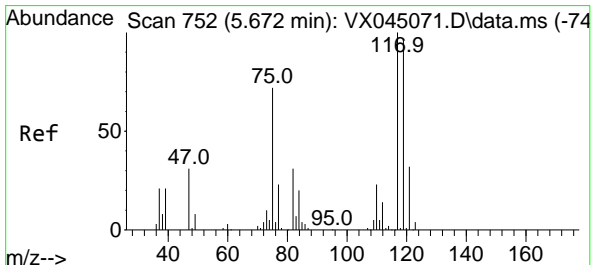
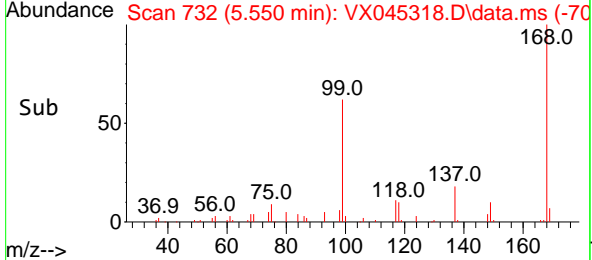
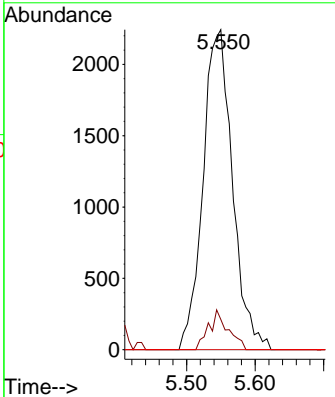
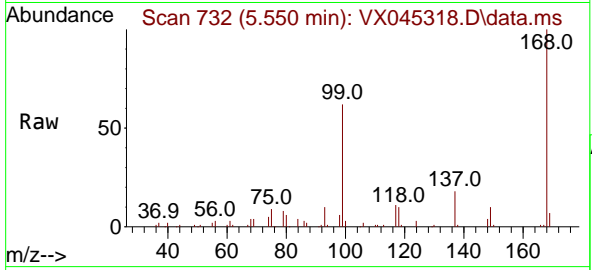




#36
 1,1-Dichloropropene
 Concen: 5.153 ug/l
 RT: 5.550 min Scan# 711
 Delta R.T. -0.140 min
 Lab File: VX045318.D
 Acq: 18 Mar 2025 12:30

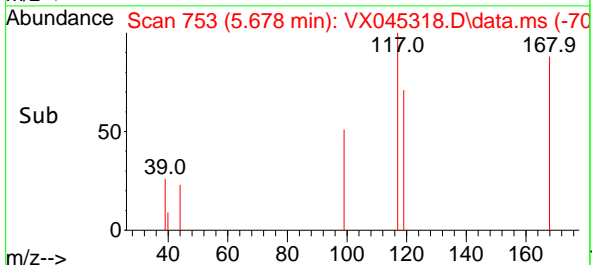
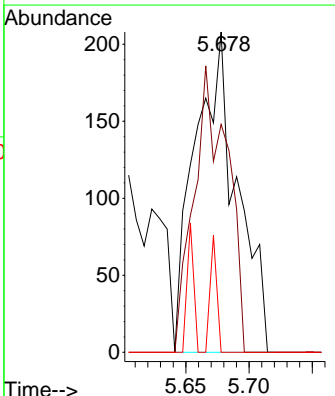
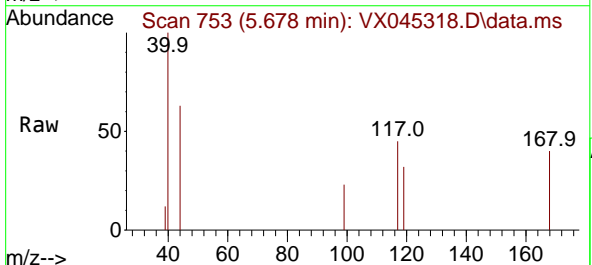
Instrument : MSVOA_X
 ClientSampleId : RE115D1-20250310DL

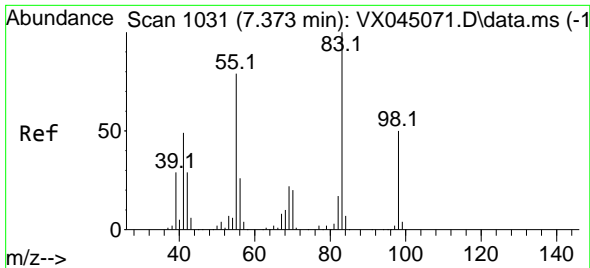
Tgt Ion	Resp	Lower	Upper
75	6692		
75	100		
110	8.2	16.9	50.6#
77	0.0	24.5	36.7#



#38
 Carbon Tetrachloride
 Concen: 0.366 ug/l
 RT: 5.678 min Scan# 753
 Delta R.T. 0.006 min
 Lab File: VX045318.D
 Acq: 18 Mar 2025 12:30

Tgt Ion	Resp	Lower	Upper
117	482		
117	100		
119	71.2	76.7	115.1#
121	0.0	25.5	38.3#

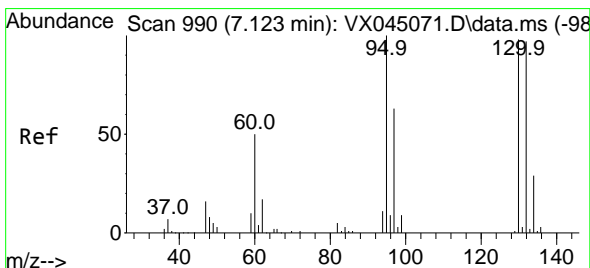
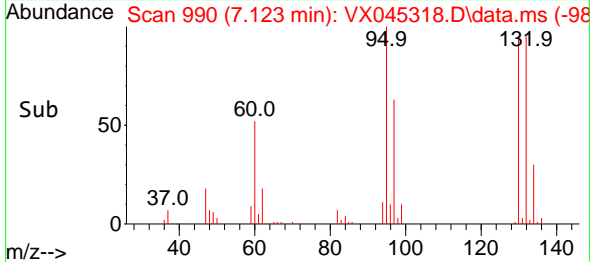
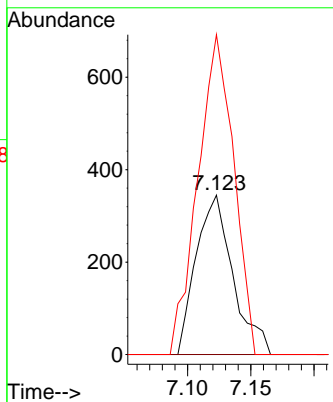
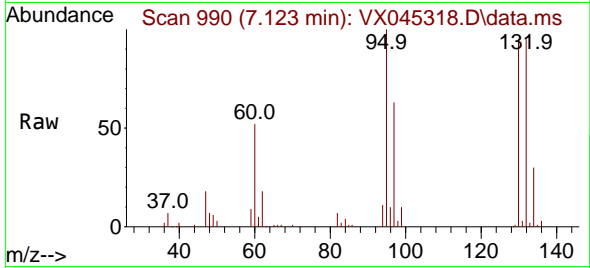




#39
 Methylcyclohexane
 Concen: 0.449 ug/l
 RT: 7.123 min Scan# 990
 Delta R.T. -0.250 min
 Lab File: VX045318.D
 Acq: 18 Mar 2025 12:30

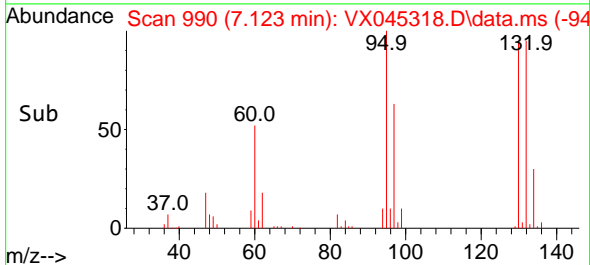
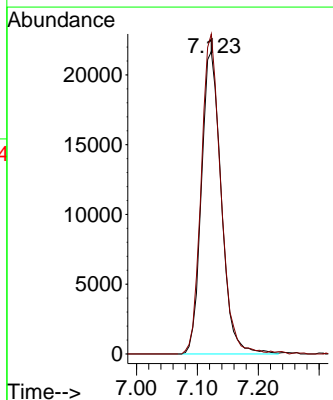
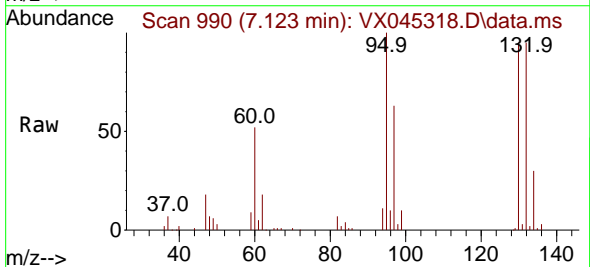
Instrument : MSVOA_X
 ClientSampleId : RE115D1-20250310DL

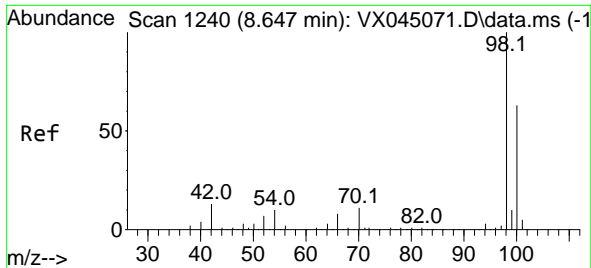
Tgt Ion	Resp	Lower	Upper
83	100		
55	0.0	63.0	94.4#
98	200.6	39.7	59.5#



#44
 Trichloroethene
 Concen: 50.925 ug/l
 RT: 7.123 min Scan# 990
 Delta R.T. 0.000 min
 Lab File: VX045318.D
 Acq: 18 Mar 2025 12:30

Tgt Ion	Resp	Lower	Upper
130	100		
95	105.8	0.0	205.0

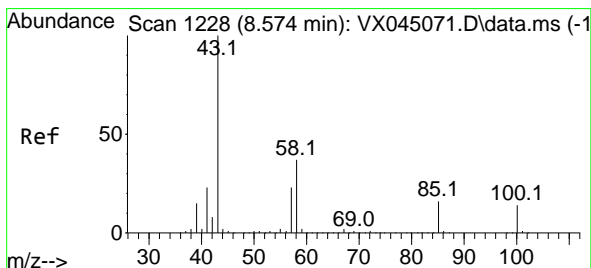
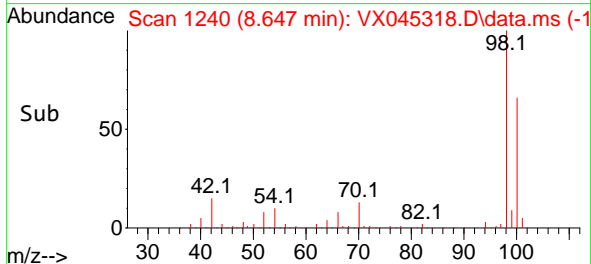
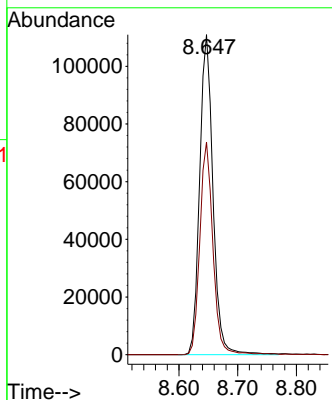
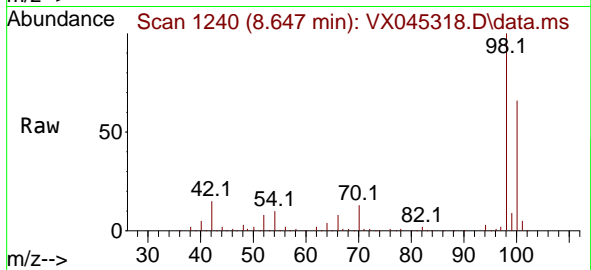




#50
 Toluene-d8
 Concen: 50.941 ug/l
 RT: 8.647 min Scan# 11
 Delta R.T. 0.000 min
 Lab File: VX045318.D
 Acq: 18 Mar 2025 12:30

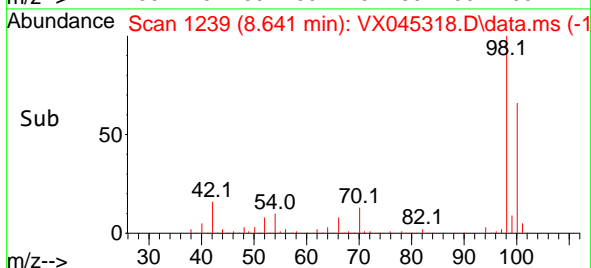
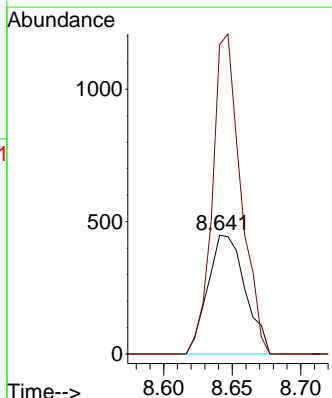
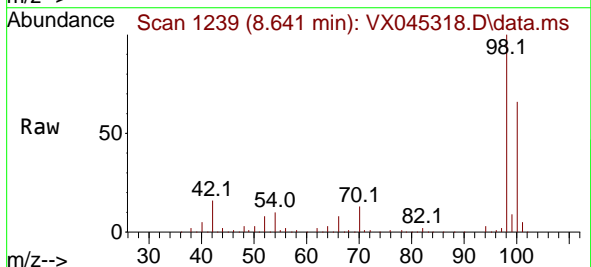
Instrument :
 MSVOA_X
 ClientSampleId :
 RE115D1-20250310DL

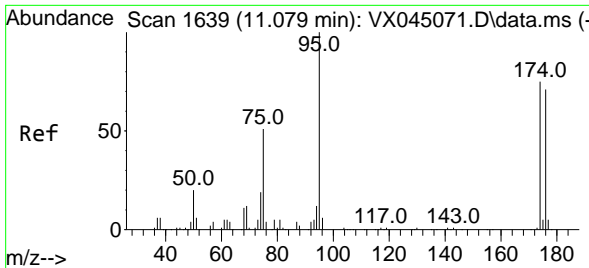
Tgt Ion: 98 Resp: 174877
 Ion Ratio Lower Upper
 98 100
 100 65.4 52.0 78.0



#51
 4-Methyl-2-Pentanone
 Concen: 0.513 ug/l
 RT: 8.641 min Scan# 1239
 Delta R.T. 0.067 min
 Lab File: VX045318.D
 Acq: 18 Mar 2025 12:30

Tgt Ion: 43 Resp: 852
 Ion Ratio Lower Upper
 43 100
 58 204.6 29.2 43.8#



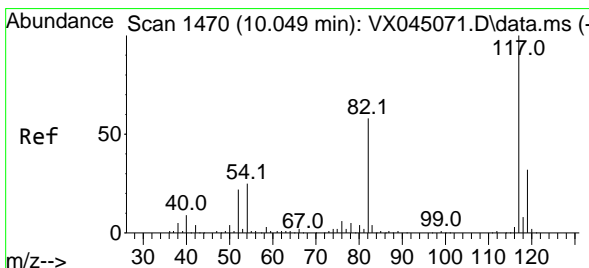
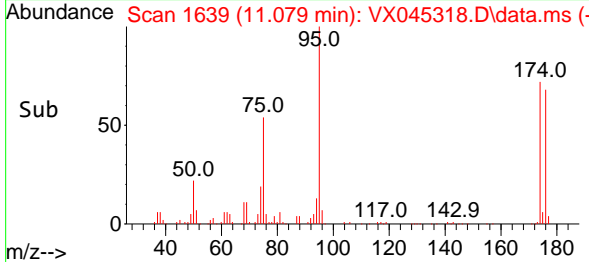
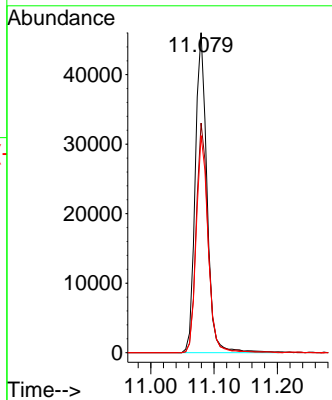
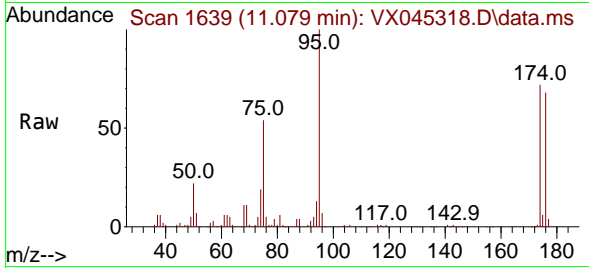


#62
 4-Bromofluorobenzene
 Concen: 52.342 ug/l
 RT: 11.079 min Scan# 1639
 Delta R.T. 0.000 min
 Lab File: VX045318.D
 Acq: 18 Mar 2025 12:30

Instrument : MSVOA_X
 ClientSampleId : RE115D1-20250310DL

Tgt Ion: 95 Resp: 59543

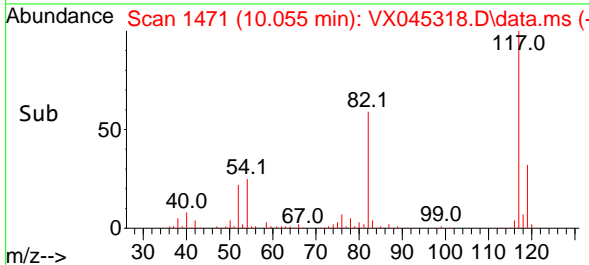
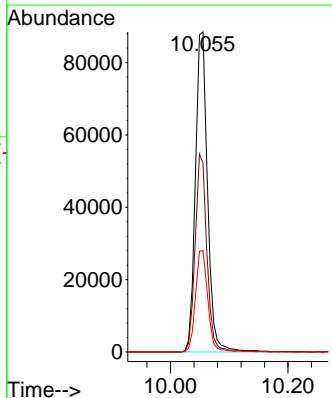
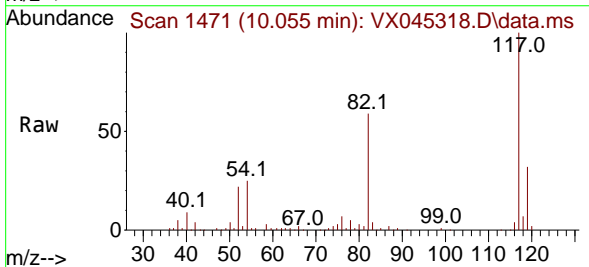
Ion	Ratio	Lower	Upper
95	100		
174	72.7	0.0	148.2
176	68.5	0.0	141.4

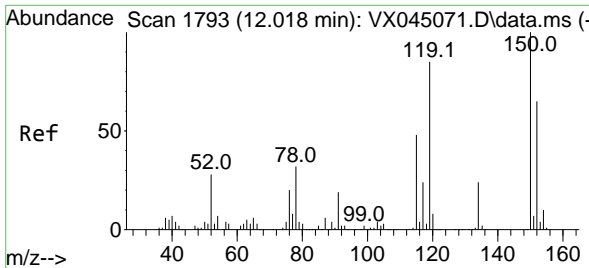


#63
 Chlorobenzene-d5
 Concen: 50.000 ug/l
 RT: 10.055 min Scan# 1471
 Delta R.T. 0.006 min
 Lab File: VX045318.D
 Acq: 18 Mar 2025 12:30

Tgt Ion: 117 Resp: 127488

Ion	Ratio	Lower	Upper
117	100		
82	59.1	46.3	69.5
119	31.7	25.7	38.5

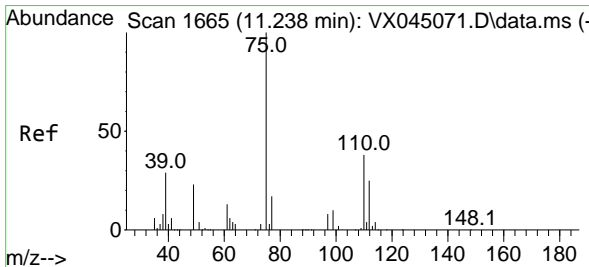
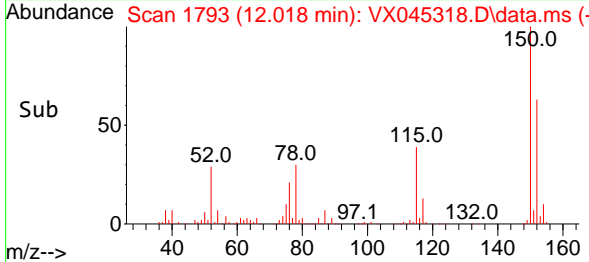
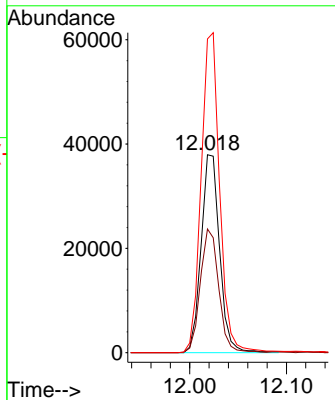
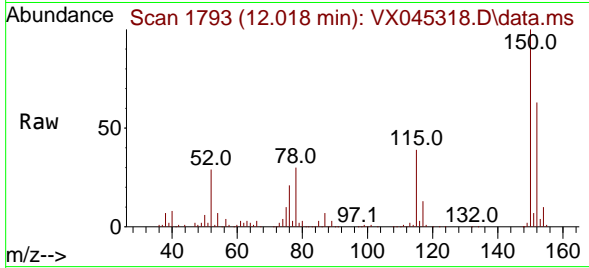




#72
 1,4-Dichlorobenzene-d4
 Concen: 50.000 ug/l
 RT: 12.018 min Scan# 1
 Delta R.T. 0.000 min
 Lab File: VX045318.D
 Acq: 18 Mar 2025 12:30

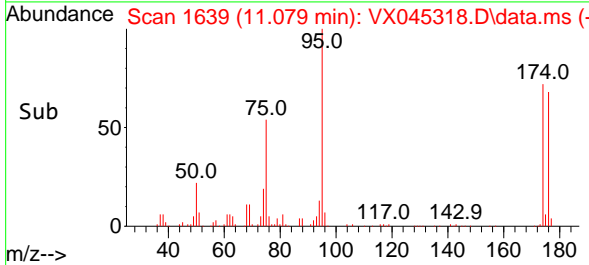
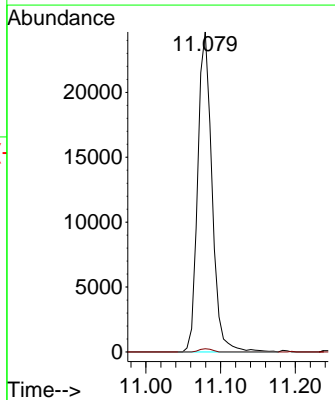
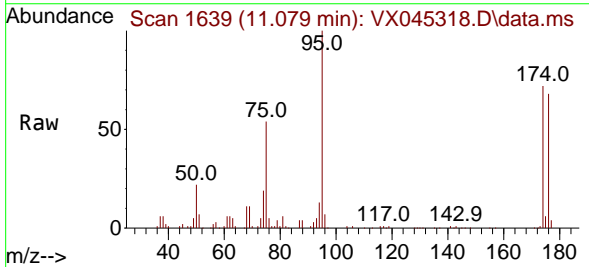
Instrument :
 MSVOA_X
 ClientSampleId :
 RE115D1-20250310DL

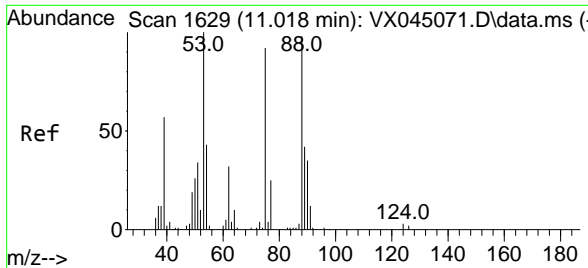
Tgt Ion	Resp	Lower	Upper
152	50596	100	
115	62.2	44.2	132.6
150	163.1	0.0	349.0



#76
 1,2,3-Trichloropropane
 Concen: 27.770 ug/l
 RT: 11.079 min Scan# 1639
 Delta R.T. -0.158 min
 Lab File: VX045318.D
 Acq: 18 Mar 2025 12:30

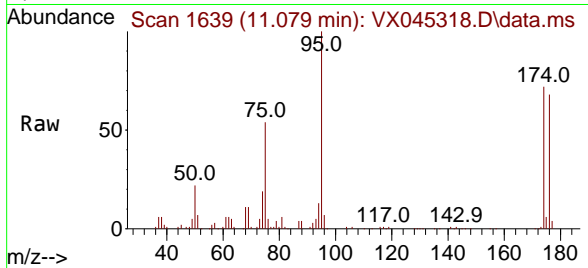
Tgt Ion	Resp	Lower	Upper
75	32703	100	
77	0.9	20.7	62.1#





#81
 trans-1,4-Dichloro-2-butene
 Concen: 95.035 ug/l
 RT: 11.079 min Scan# 1
 Delta R.T. 0.061 min
 Lab File: VX045318.D
 Acq: 18 Mar 2025 12:30

Instrument :
 MSVOA_X
 ClientSampleId :
 RE115D1-20250310DL



Tgt Ion: 75 Resp: 32703

Ion	Ratio	Lower	Upper
75	100		
53	0.0	88.5	132.7#
89	0.0	36.2	54.4#

