

Data Path : Z:\VOASRV\HPCHEM1\MSVOA X\DATA\VX031919\
 Data File : VX008214.D
 Acq On : 20 Mar 2019 01:57
 Operator : JC/SP
 Sample : K1882-07
 Misc : 5.0mL/MSVOA X/WATER
 ALS Vial : 40 Sample Multiplier: 1

Instrument :
 MSVOA_X
ClientSampled :
 BPS1-TT-MW304S-20190312

Quant Time: Mar 20 08:38:05 2019
 Quant Method : Z:\VOASRV\HPCHEM1\MSVOA_X\METHOD\82X031919W.M
 Quant Title : SW846 8260
 QLast Update : Wed Mar 20 06:51:58 2019
 Response via : Initial Calibration

Internal Standards	R.T.	QIon	Response	Conc	Units	Dev(Min)
1) Pentafluorobenzene	5.67	168	331626	50.00	ug/l	0.00
34) 1,4-Difluorobenzene	6.86	114	536652	50.00	ug/l	0.00
63) Chlorobenzene-d5	10.12	117	451183	50.00	ug/l	0.00
72) 1,4-Dichlorobenzene-d4	12.08	152	180110	50.00	ug/l	0.00

System Monitoring Compounds

33) 1,2-Dichloroethane-d4	6.07	65	229458	45.94	ug/l	0.00
Spiked Amount	50.000		Recovery	=	91.88%	
35) Dibromofluoromethane	5.50	113	169054	47.06	ug/l	0.00
Spiked Amount	50.000		Recovery	=	94.12%	
50) Toluene-d8	8.71	98	660856	48.52	ug/l	0.00
Spiked Amount	50.000		Recovery	=	97.04%	
62) 4-Bromofluorobenzene	11.13	95	207729	44.29	ug/l	0.00
Spiked Amount	50.000		Recovery	=	88.58%	

Target Compounds

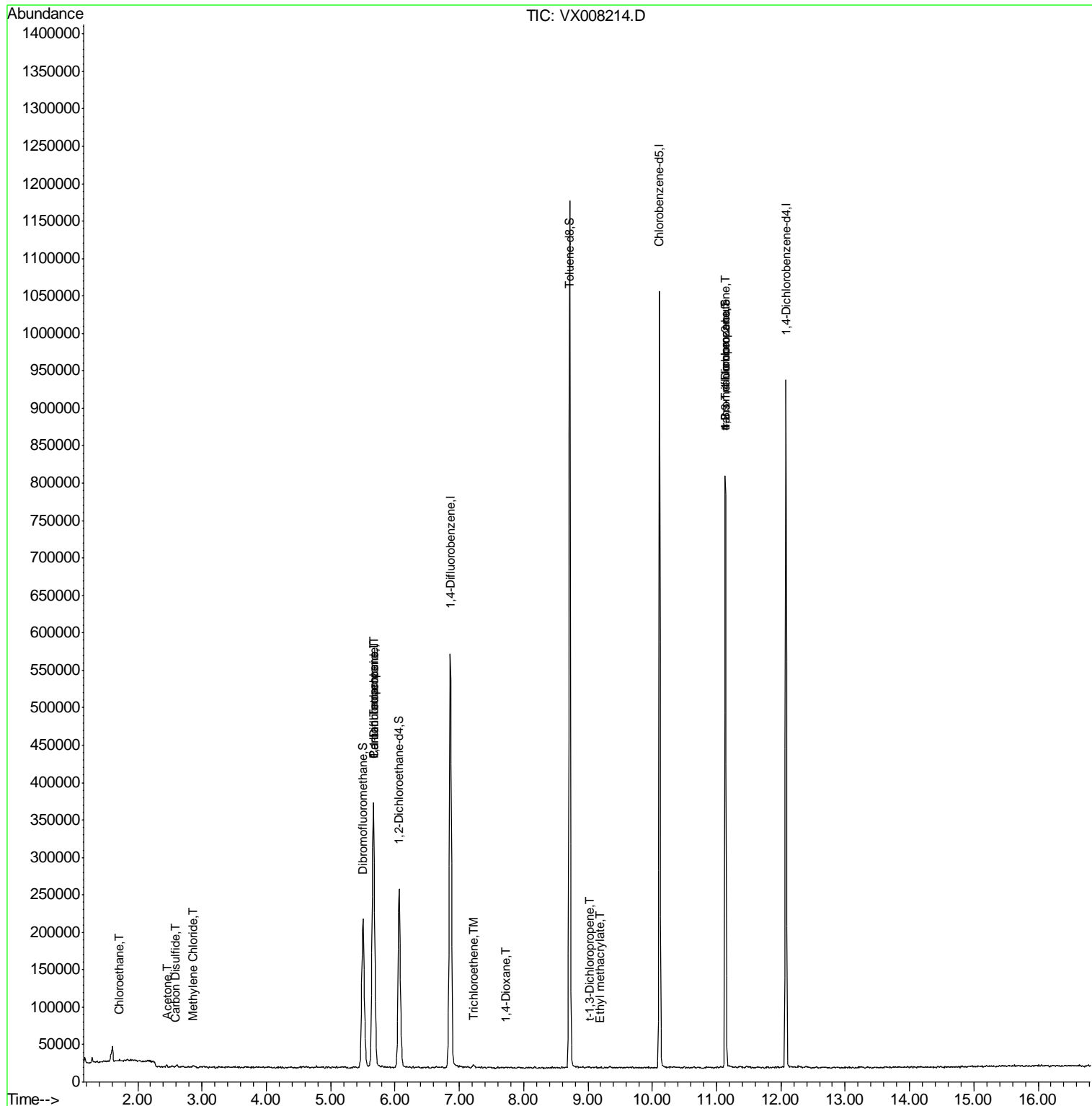
					Qvalue	
6) Chloroethane	1.71	64	851	0.270	ug/l #	55
13) Acrolein	2.28	56	78	Below	Cal #	13
16) Acetone	2.45	43	3125	1.103	ug/l	95
17) Carbon Disulfide	2.57	76	1088	0.757	ug/l #	92
20) Methylene Chloride	2.87	84	1111	0.235	ug/l #	88
36) 1,1-Dichloropropene	5.66	75	26882	4.302	ug/l #	41
38) Carbon Tetrachloride	5.66	117	32861	5.903	ug/l #	16
44) Trichloroethene	7.22	130	1421	0.314	ug/l	96
49) 1,4-Dioxane	7.73	88	28	0.252	ug/l #	1
53) t-1,3-Dichloropropene	9.02	75	122	1.438	ug/l #	48
56) Ethyl methacrylate	9.19	69	165	0.547	ug/l #	85
76) 1,2,3-Trichloropropane	11.13	75	110042	21.723	ug/l #	40
81) trans-1,4-Dichloro-2-buten	11.13	75	110042	55.223	ug/l #	12

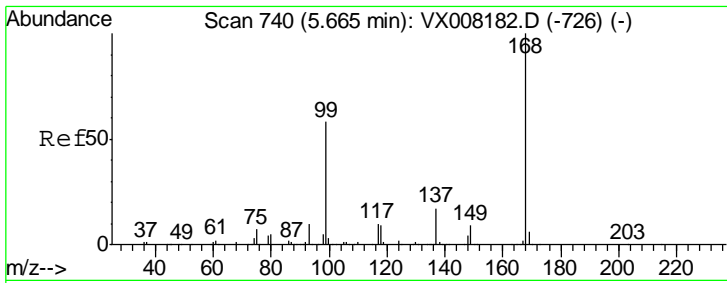
(#) = qualifier out of range (m) = manual integration (+) = signals summed

Data Path : Z:\VOASRV\HPCHEM1\MSVOA X\DATA\VX031919\
 Data File : VX008214.D
 Acq On : 20 Mar 2019 01:57
 Operator : JC/SP
 Sample : K1882-07
 Misc : 5.0mL/MSVOA X/WATER
 ALS Vial : 40 Sample Multiplier: 1

Instrument :
 MSVOA_X
 Client Sampled :
 BPS1-TT-MW304S-20190312

Quant Time: Mar 20 08:38:05 2019
 Quant Method : Z:\VOASRV\HPCHEM1\MSVOA_X\METHOD\82X031919W.M
 Quant Title : SW846 8260
 QLast Update : Wed Mar 20 06:51:58 2019
 Response via : Initial Calibration

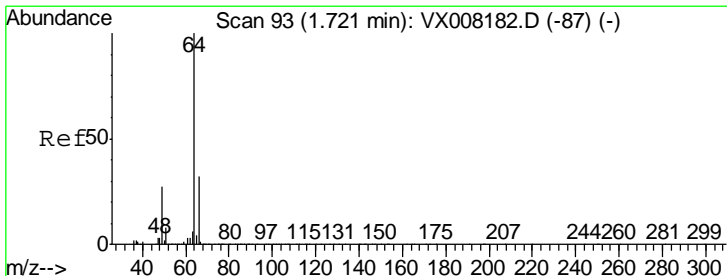
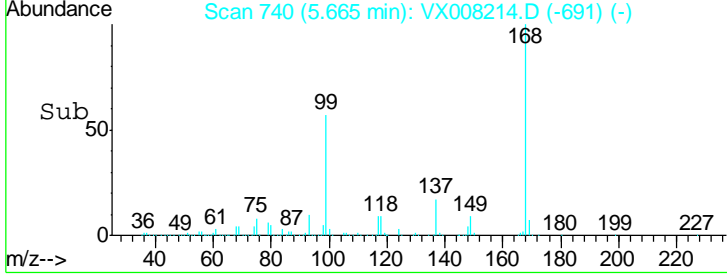
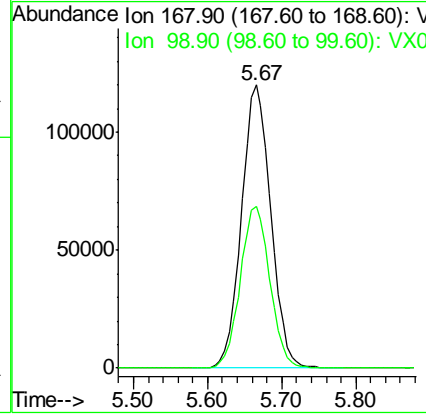
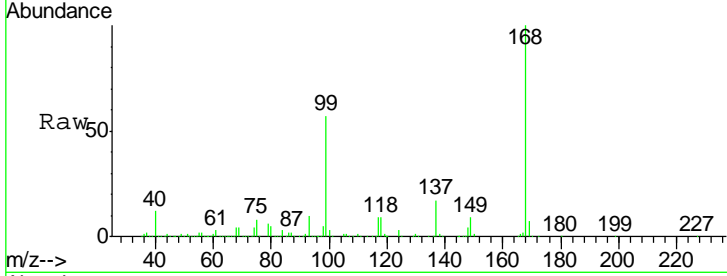




#1
 Pentafluorobenzene
 Concen: 50.000 ug/l
 RT: 5.67 min Scan# 740
 Delta R.T. 0.00 min
 Lab File: VX008214.D
 Acq: 20 Mar 2019 01:57

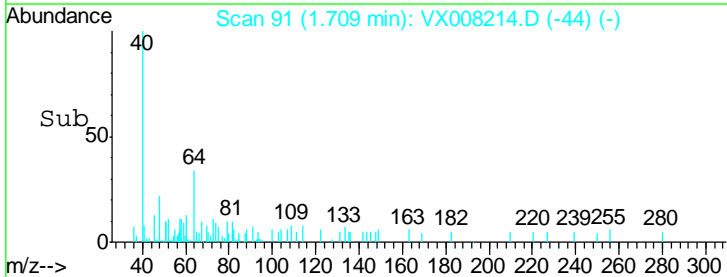
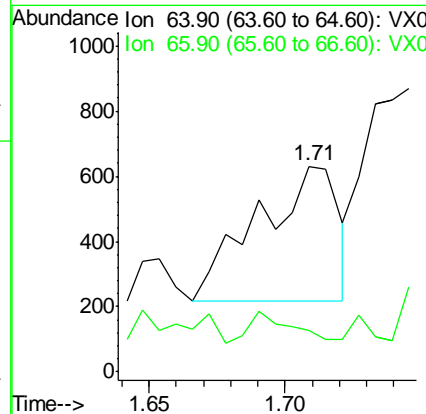
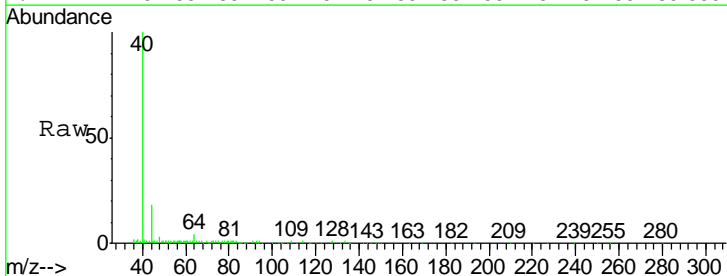
Instrument :
 MSVOA_X
 ClientSampleId :
 BPS1-TT-MW304S-20190312

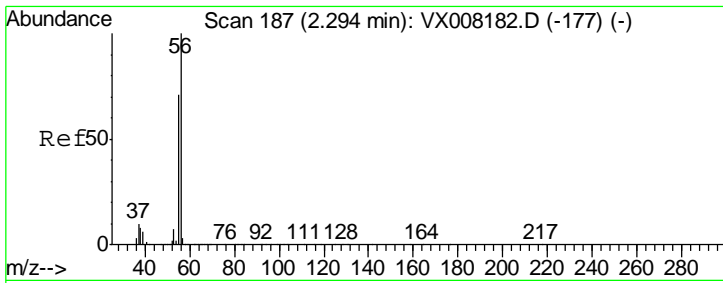
Tgt Ion	Resp	Lower	Upper
168	100		
99	56.9	37.6	56.4#



#6
 Chloroethane
 Concen: 0.270 ug/l
 RT: 1.71 min Scan# 91
 Delta R.T. -0.01 min
 Lab File: VX008214.D
 Acq: 20 Mar 2019 01:57

Tgt Ion	Resp	Lower	Upper
64	100		
66	6.8	25.2	37.8#

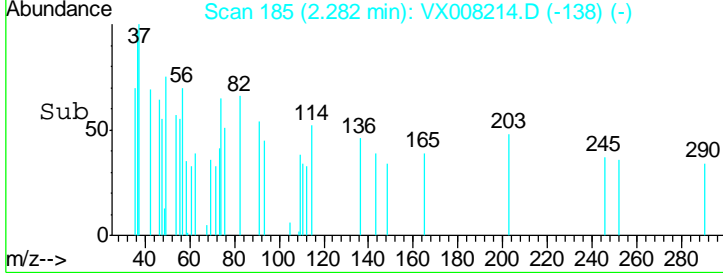
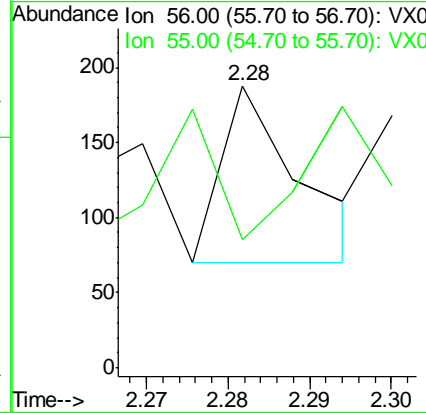
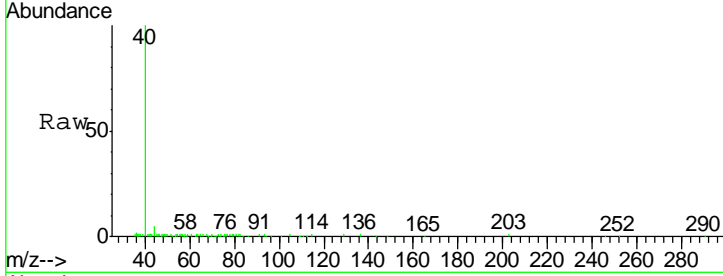




#13
 Acrolein
 Concen: Below Cal
 RT: 2.28 min Scan# 185
 Delta R.T. -0.01 min
 Lab File: VX008214.D
 Acq: 20 Mar 2019 01:57

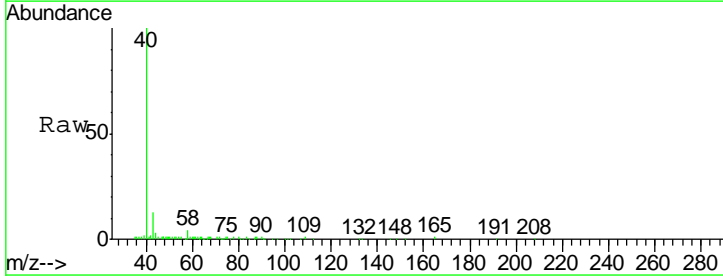
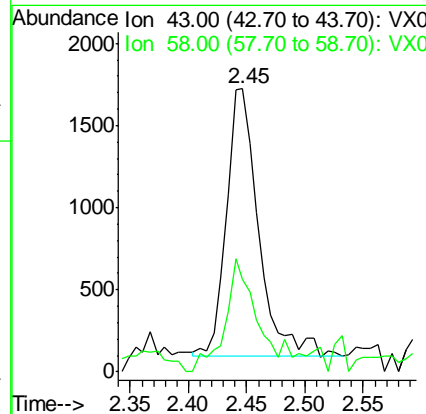
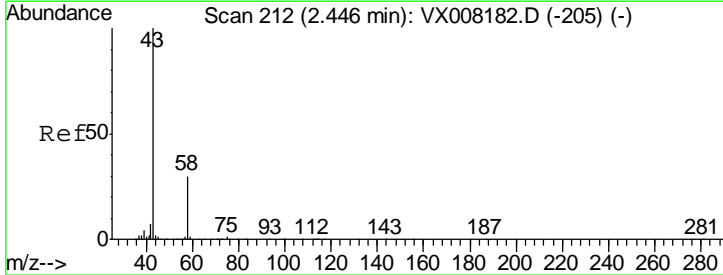
Instrument :
 MSVOA_X
ClientSampled :
 BPS1-TT-MW304S-20190312

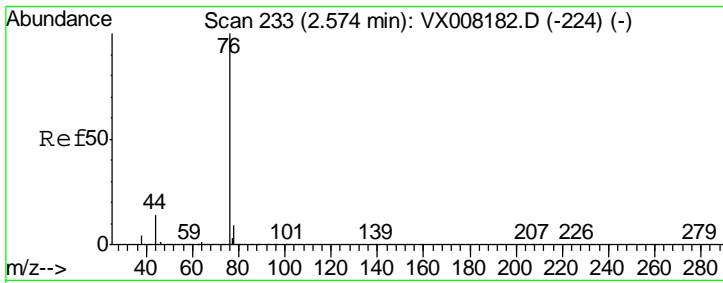
Tgt Ion	Resp	Lower	Upper
56	100		
55	0.0	57.8	86.6#



#16
 Acetone
 Concen: 1.103 ug/l
 RT: 2.45 min Scan# 212
 Delta R.T. 0.00 min
 Lab File: VX008214.D
 Acq: 20 Mar 2019 01:57

Tgt Ion	Resp	Lower	Upper
43	100		
58	34.9	25.5	38.3

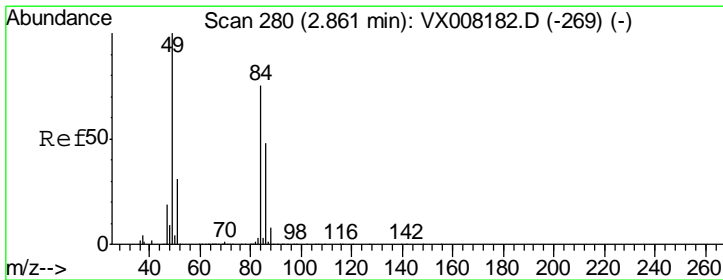
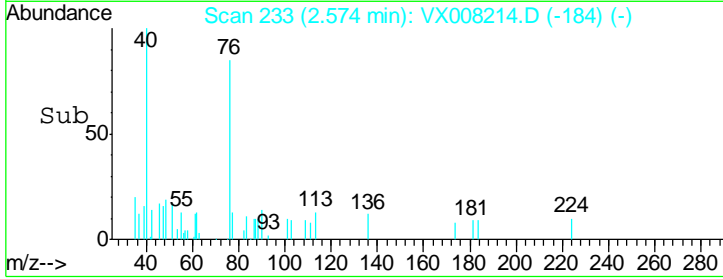
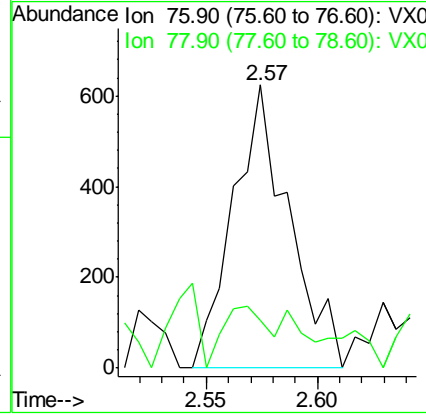
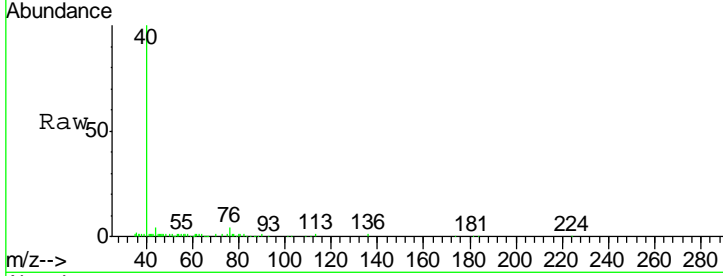




#17
 Carbon Disulfide
 Concen: 0.757 ug/l
 RT: 2.57 min Scan# 233
 Delta R.T. 0.00 min
 Lab File: VX008214.D
 Acq: 20 Mar 2019 01:57

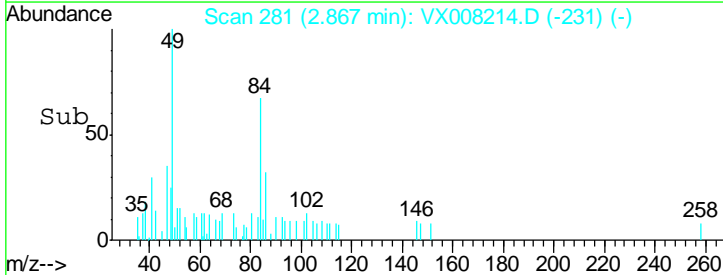
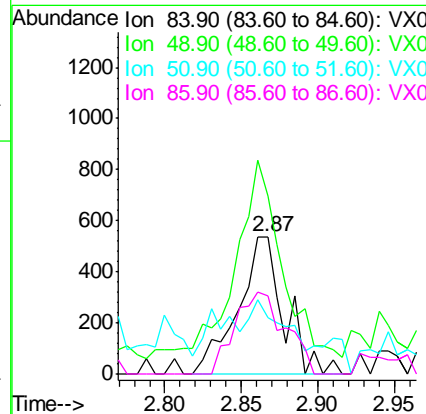
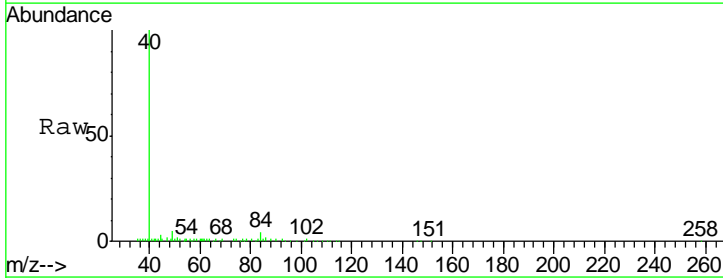
Instrument :
 MSVOA_X
 ClientSampled :
 BPS1-TT-MW304S-20190312

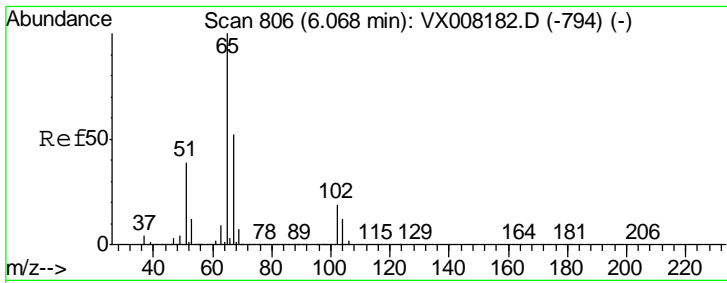
Tgt Ion: 76 Resp: 1088
 Ion Ratio Lower Upper
 76 100
 78 6.1 7.2 10.8#



#20
 Methylene Chloride
 Concen: 0.235 ug/l
 RT: 2.87 min Scan# 281
 Delta R.T. 0.01 min
 Lab File: VX008214.D
 Acq: 20 Mar 2019 01:57

Tgt Ion: 84 Resp: 1111
 Ion Ratio Lower Upper
 84 100
 49 111.5 99.3 148.9
 51 27.6 31.3 46.9#
 86 57.0 52.6 79.0

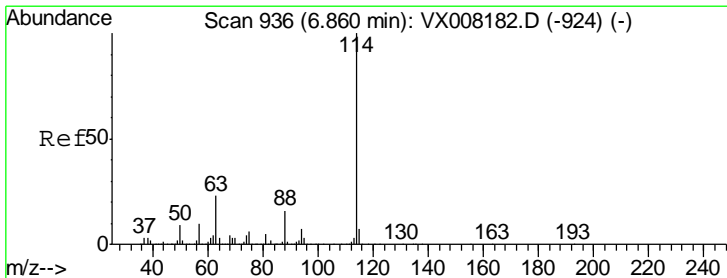
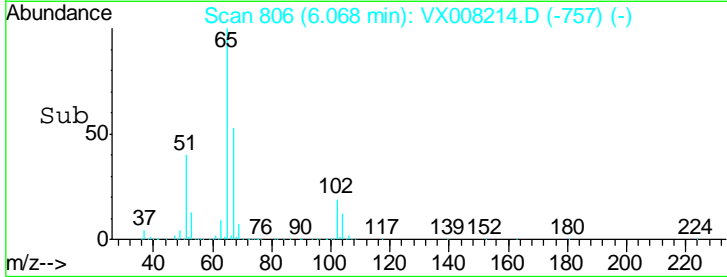
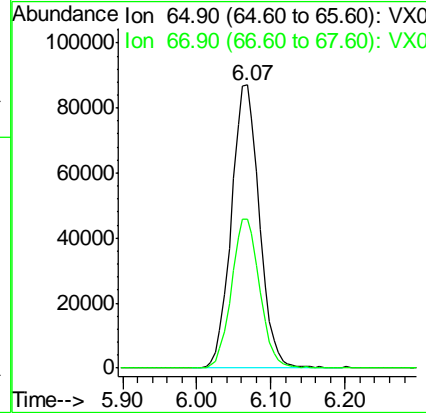
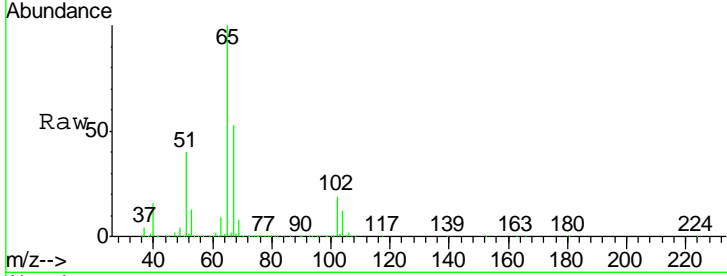




#33
 1,2-Dichloroethane-d4
 Concen: 45.941 ug/l
 RT: 6.07 min Scan# 806
 Delta R.T. 0.00 min
 Lab File: VX008214.D
 Acq: 20 Mar 2019 01:57

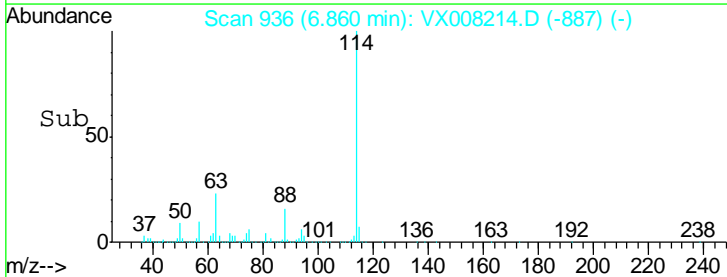
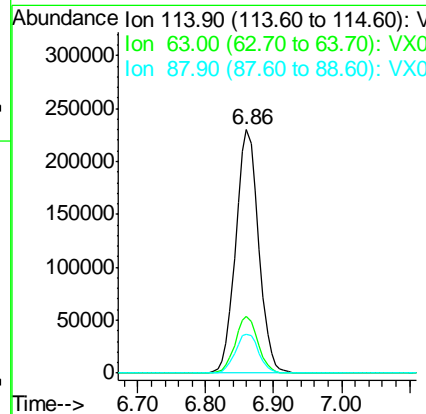
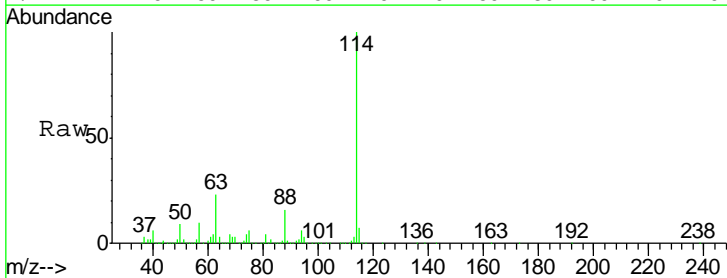
Instrument :
 MSVOA_X
 ClientSampleId :
 BPS1-TT-MW304S-20190312

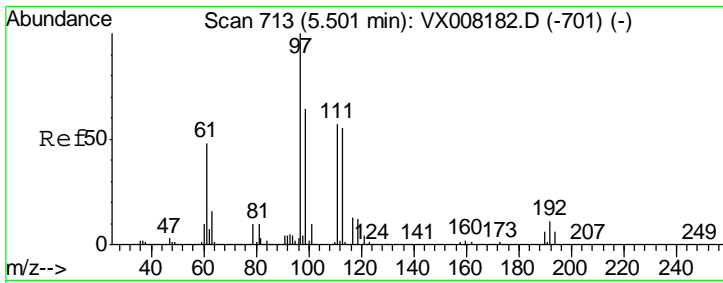
Tgt Ion	Resp	Lower	Upper
65	100		
67	52.9	0.0	110.0



#34
 1,4-Difluorobenzene
 Concen: 50.000 ug/l
 RT: 6.86 min Scan# 936
 Delta R.T. 0.00 min
 Lab File: VX008214.D
 Acq: 20 Mar 2019 01:57

Tgt Ion	Resp	Lower	Upper
114	100		
63	23.2	0.0	39.8
88	16.1	0.0	31.4

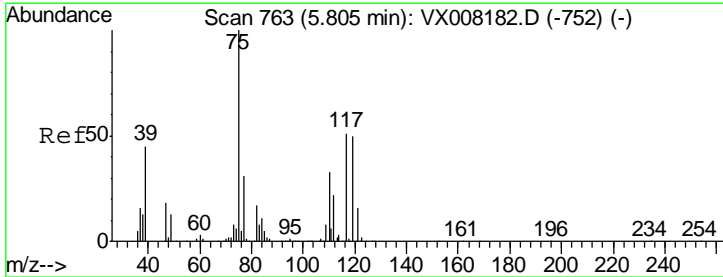
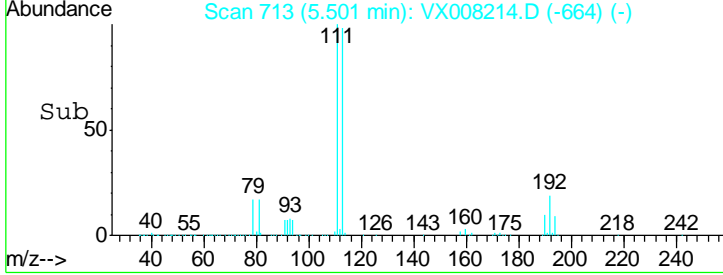
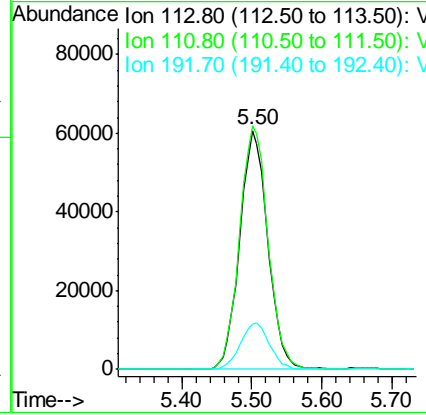
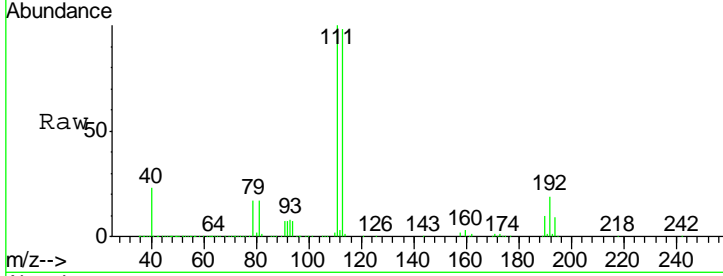




#35
 Dibromofluoromethane
 Concen: 47.057 ug/l
 RT: 5.50 min Scan# 713
 Delta R.T. 0.00 min
 Lab File: VX008214.D
 Acq: 20 Mar 2019 01:57

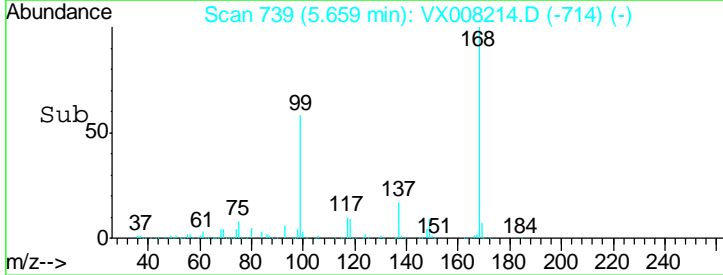
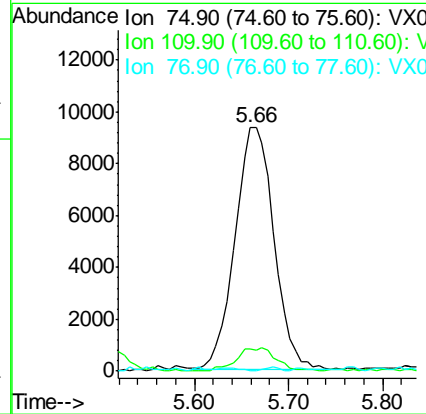
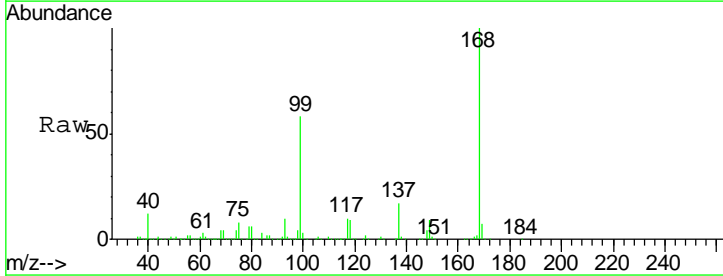
Instrument :
 MSVOA_X
ClientSampled :
 BPS1-TT-MW304S-20190312

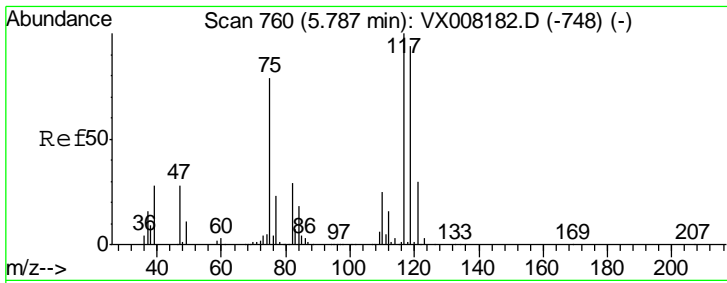
Tgt Ion	Resp	Lower	Upper
113	169054		
111	103.5	81.4	122.0
192	20.2	19.4	29.0



#36
 1,1-Dichloropropene
 Concen: 4.302 ug/l
 RT: 5.66 min Scan# 739
 Delta R.T. -0.15 min
 Lab File: VX008214.D
 Acq: 20 Mar 2019 01:57

Tgt Ion	Resp	Lower	Upper
75	26882		
75	100		
110	0.0	18.4	55.0#
77	0.0	25.0	37.4#

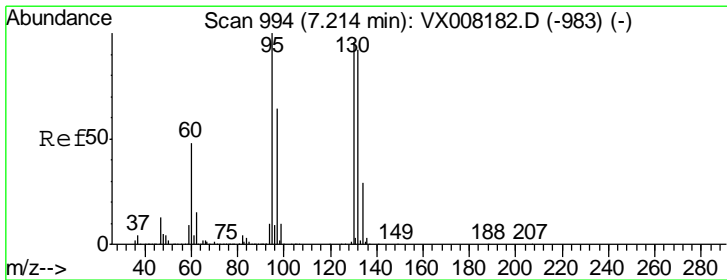
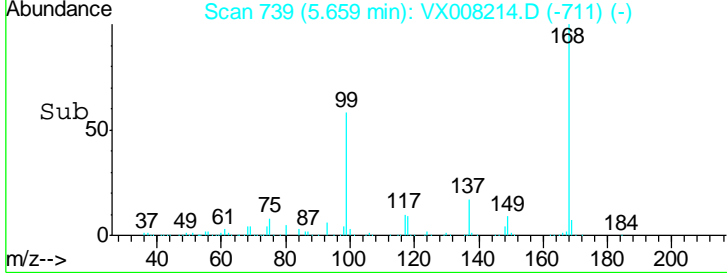
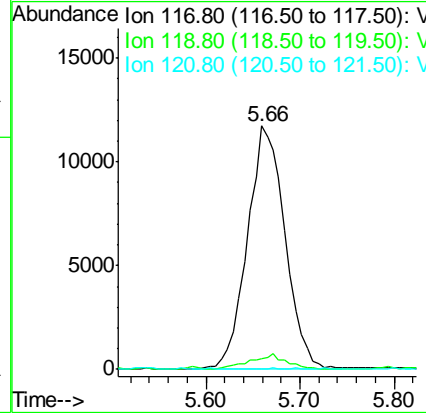
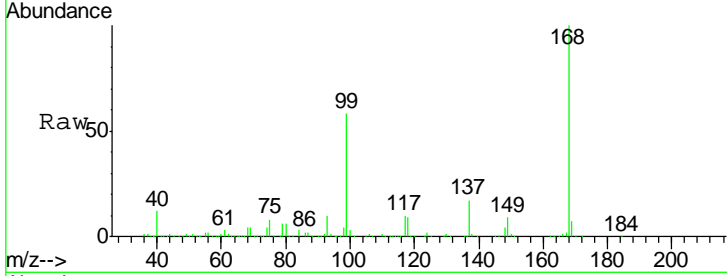




#38
 Carbon Tetrachloride
 Concen: 5.903 ug/l
 RT: 5.66 min Scan# 739
 Delta R.T. -0.13 min
 Lab File: VX008214.D
 Acq: 20 Mar 2019 01:57

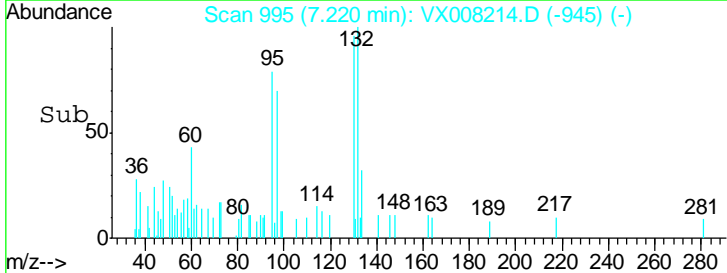
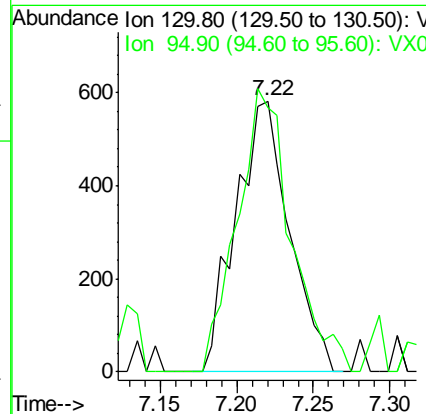
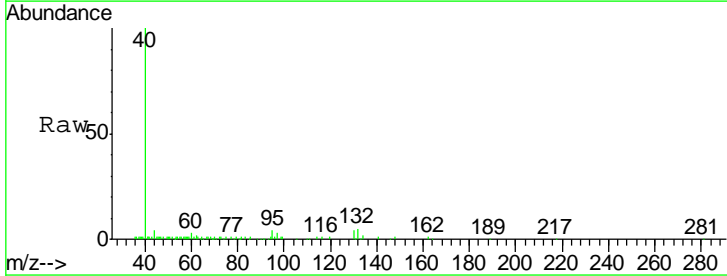
Instrument :
 MSVOA_X
 ClientSampled :
 BPS1-TT-MW304S-20190312

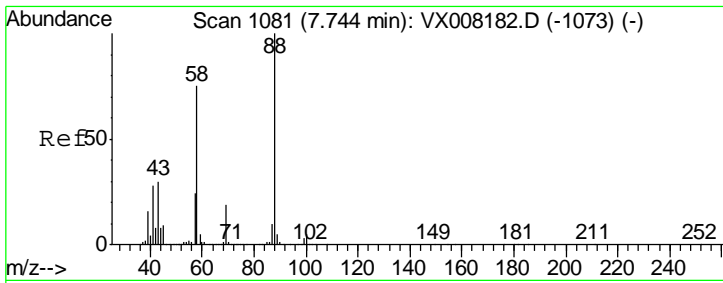
Tgt Ion	Resp	Lower	Upper
117	32861		
119	4.3	76.2	114.2#
121	0.0	24.6	36.8#



#44
 Trichloroethene
 Concen: 0.314 ug/l
 RT: 7.22 min Scan# 995
 Delta R.T. 0.01 min
 Lab File: VX008214.D
 Acq: 20 Mar 2019 01:57

Tgt Ion	Resp	Lower	Upper
130	1421		
130	100		
95	97.6	0.0	188.0

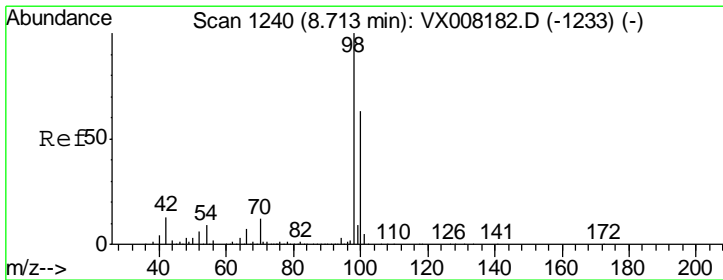
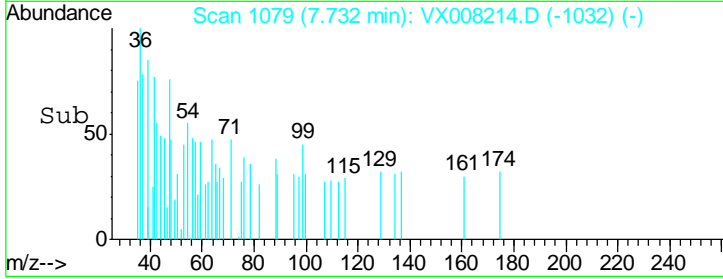
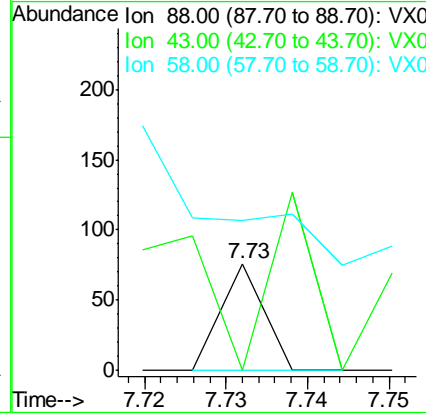
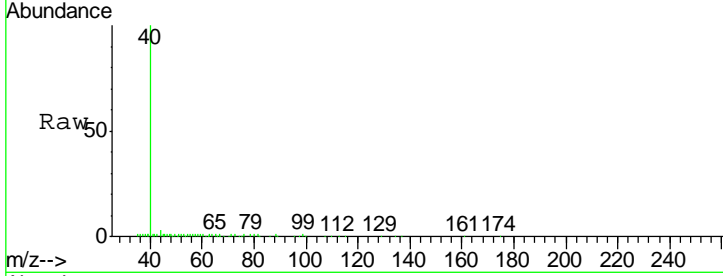




#49
 1,4-Dioxane
 Concen: 0.252 ug/l
 RT: 7.73 min Scan# 1079
 Delta R.T. -0.01 min
 Lab File: VX008214.D
 Acq: 20 Mar 2019 01:57

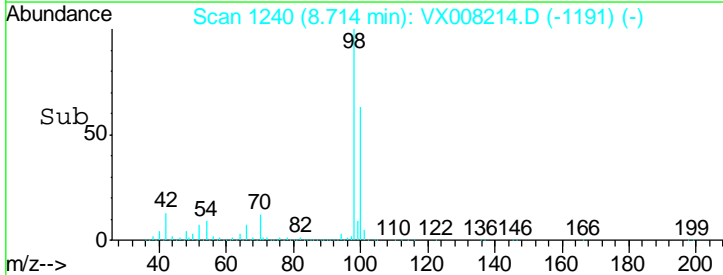
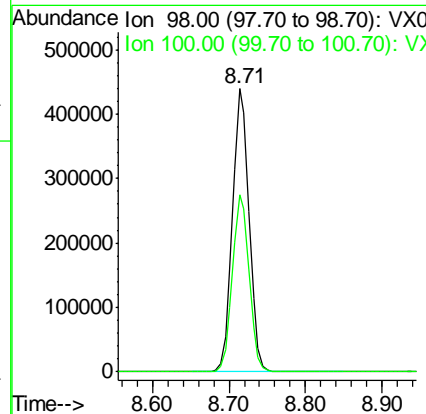
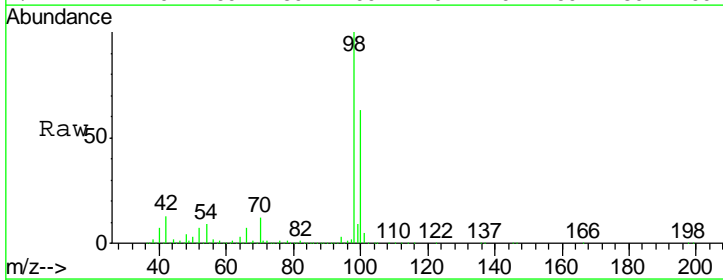
Instrument :
 MSVOA_X
ClientSampleId :
 BPS1-TT-MW304S-20190312

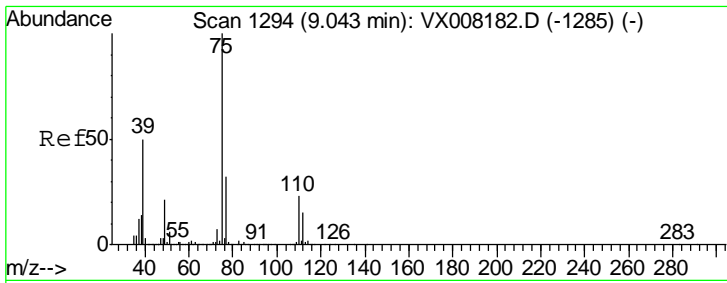
Tgt Ion	Resp	Lower	Upper
88	100		
43	164.3	25.1	37.7#
58	1178.6	57.8	86.6#



#50
 Toluene-d8
 Concen: 48.519 ug/l
 RT: 8.71 min Scan# 1240
 Delta R.T. 0.00 min
 Lab File: VX008214.D
 Acq: 20 Mar 2019 01:57

Tgt Ion	Resp	Lower	Upper
98	100		
100	62.9	51.7	77.5

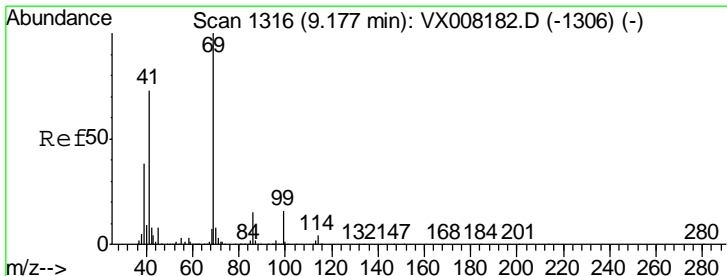
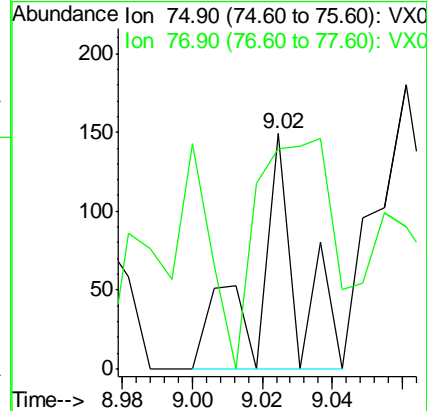
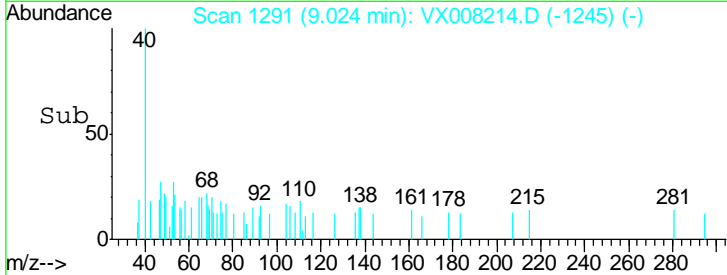
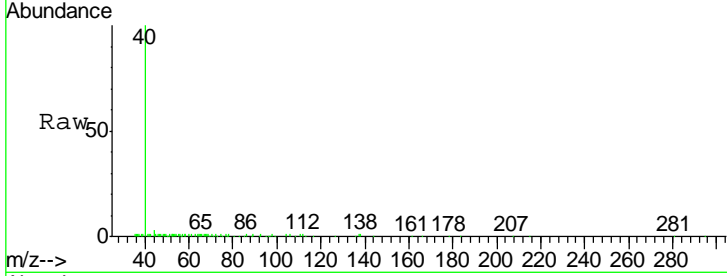




#53
 t-1,3-Dichloropropene
 Concen: 1.438 ug/l
 RT: 9.02 min Scan# 1291
 Delta R.T. -0.02 min
 Lab File: VX008214.D
 Acq: 20 Mar 2019 01:57

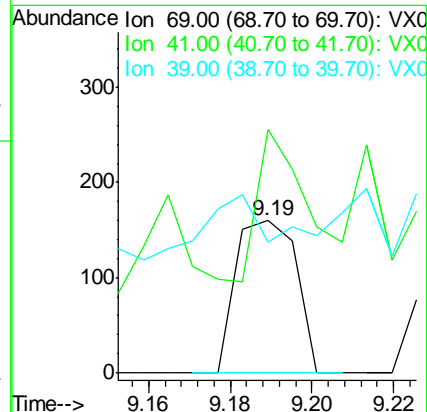
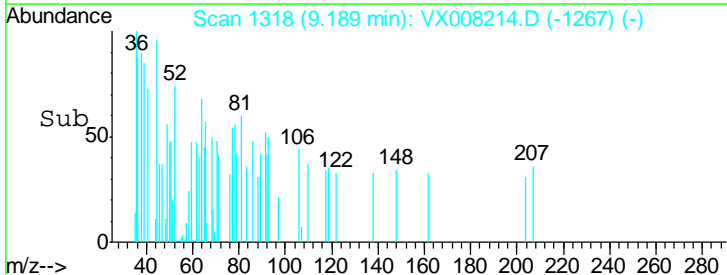
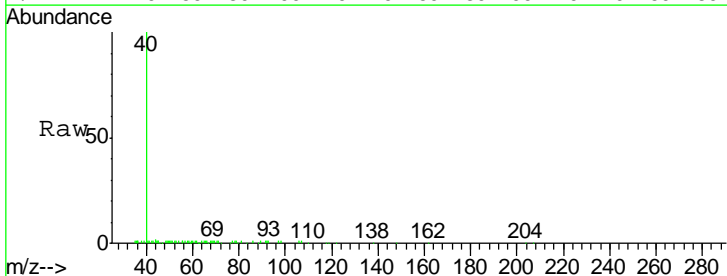
Instrument :
 MSVOA_X
 ClientSampleId :
 BPS1-TT-MW304S-20190312

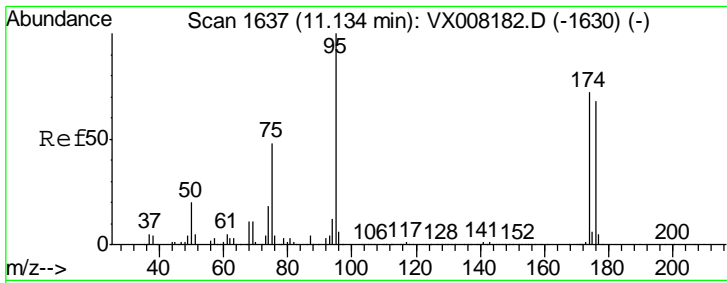
Tgt Ion	Resp	Lower	Upper
75	122		
77	60.4	25.4	38.0#



#56
 Ethyl methacrylate
 Concen: 0.547 ug/l
 RT: 9.19 min Scan# 1318
 Delta R.T. 0.01 min
 Lab File: VX008214.D
 Acq: 20 Mar 2019 01:57

Tgt Ion	Resp	Lower	Upper
69	165		
41	83.6	54.2	81.4#
39	34.5	25.0	37.4

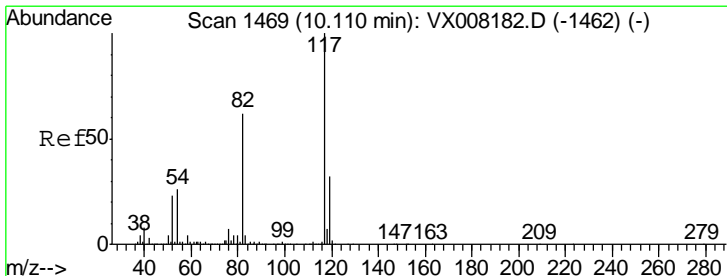
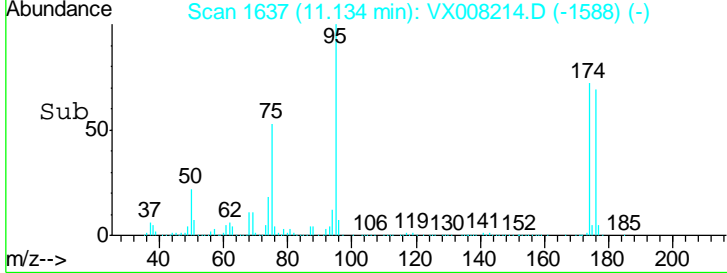
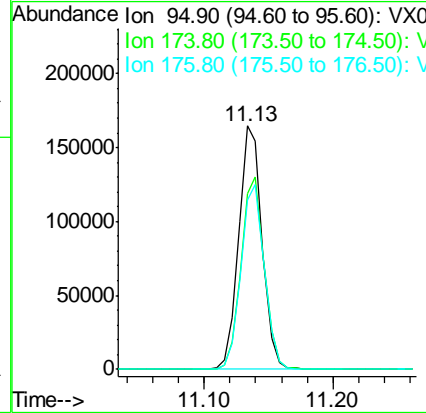
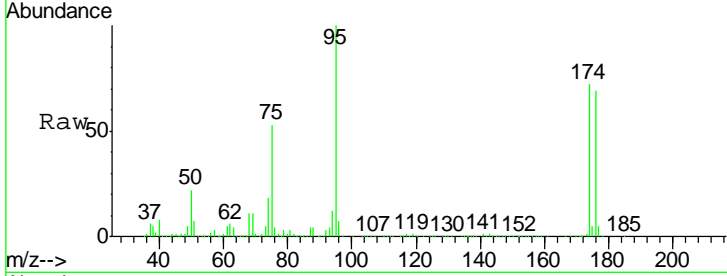




#62
 4-Bromofluorobenzene
 Concen: 44.294 ug/l
 RT: 11.13 min Scan# 1637
 Delta R.T. 0.00 min
 Lab File: VX008214.D
 Acq: 20 Mar 2019 01:57

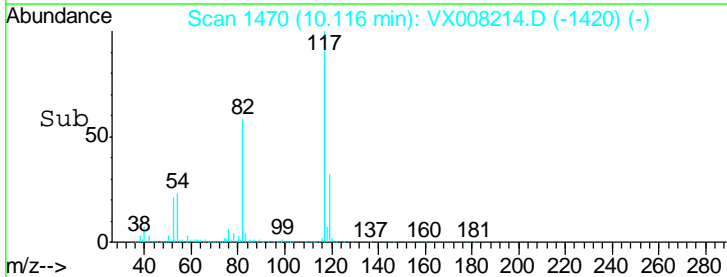
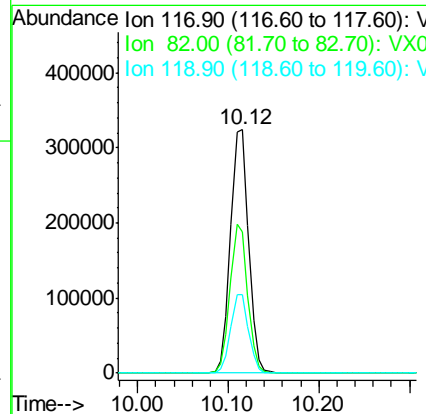
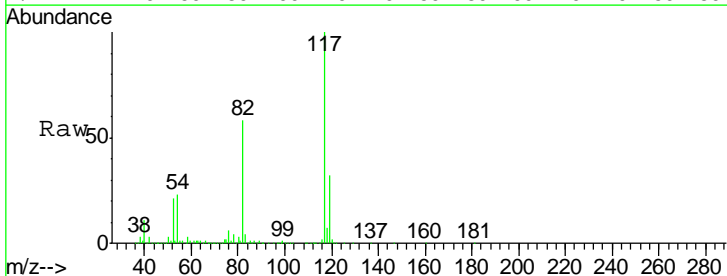
Instrument :
 MSVOA_X
 ClientSampled :
 BPS1-TT-MW304S-20190312

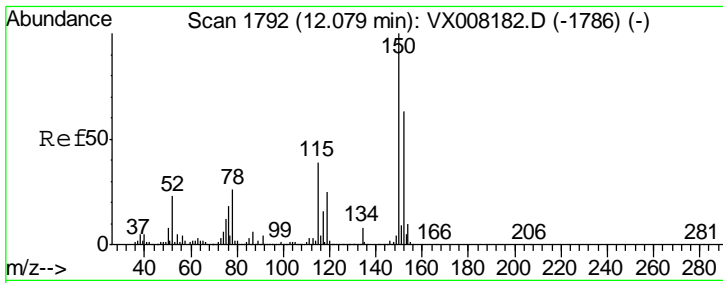
Tgt Ion	Resp	Lower	Upper
95	207729		
174	78.6	0.0	182.8
176	76.3	0.0	178.0



#63
 Chlorobenzene-d5
 Concen: 50.000 ug/l
 RT: 10.12 min Scan# 1470
 Delta R.T. 0.01 min
 Lab File: VX008214.D
 Acq: 20 Mar 2019 01:57

Tgt Ion	Resp	Lower	Upper
117	451183		
82	58.1	44.3	66.5
119	32.3	25.3	37.9

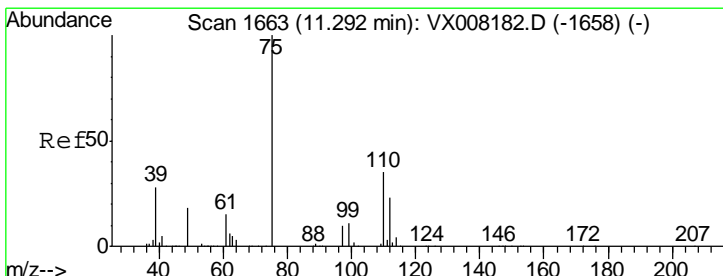
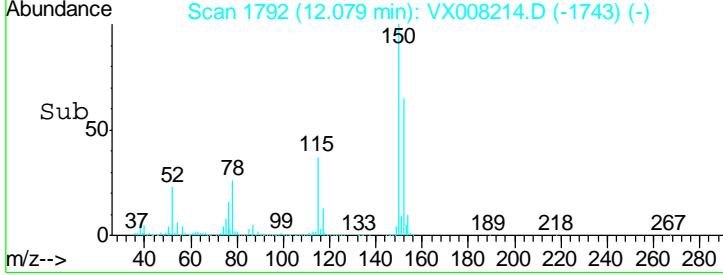
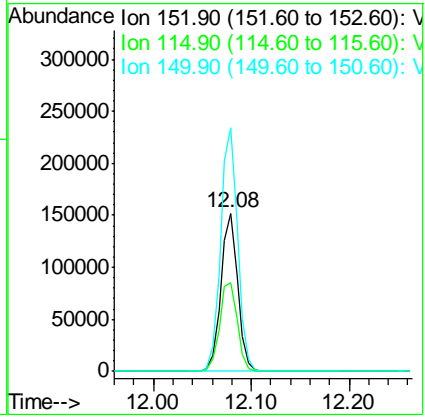
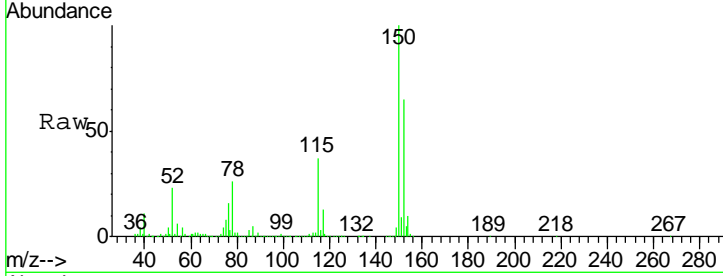




#72
 1,4-Dichlorobenzene-d4
 Concen: 50.000 ug/l
 RT: 12.08 min Scan# 1792
 Delta R.T. 0.00 min
 Lab File: VX008214.D
 Acq: 20 Mar 2019 01:57

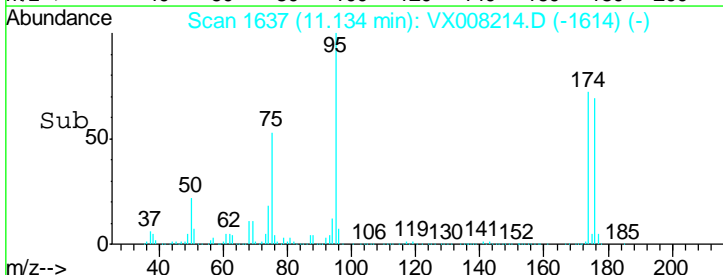
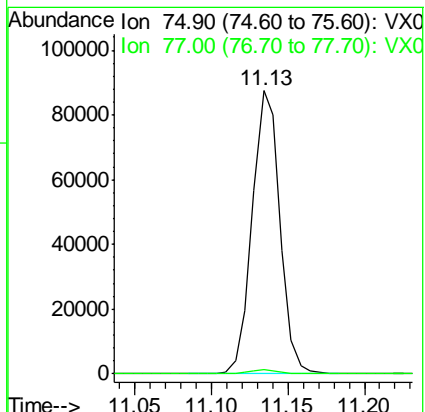
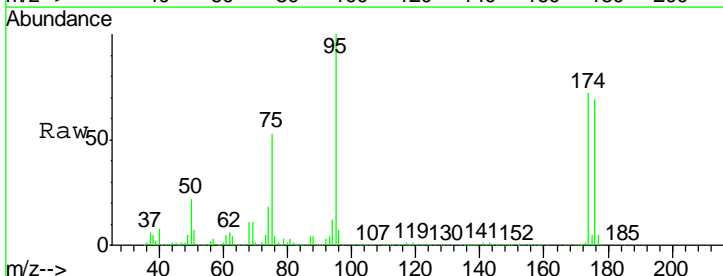
Instrument : MSVOA_X
 ClientSampled : BPS1-TT-MW304S-20190312

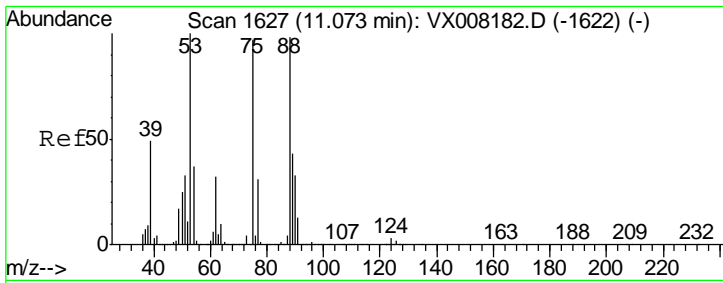
Tgt Ion	Resp	Lower	Upper
152	180110		
115	59.7	38.6	115.7
150	155.8	0.0	348.4



#76
 1,2,3-Trichloropropane
 Concen: 21.723 ug/l
 RT: 11.13 min Scan# 1637
 Delta R.T. -0.16 min
 Lab File: VX008214.D
 Acq: 20 Mar 2019 01:57

Tgt Ion	Resp	Lower	Upper
75	110042		
75	100		
77	1.7	18.9	56.7#





#81
 trans-1,4-Dichloro-2-butene
 Concen: 55.223 ug/l
 RT: 11.13 min Scan# 1637
 Delta R.T. 0.06 min
 Lab File: VX008214.D
 Acq: 20 Mar 2019 01:57

Instrument : MSVOA_X
 ClientSampleId : BPS1-TT-MW304S-20190312

Tot Ion	Resp	Lower	Upper
75	110042		
53	0.2	76.1	114.1#
89	0.1	36.3	54.5#

