

Data Path : Z:\VOASRV\HPCHEM1\MSVOA X\DATA\WX032019\  
 Data File : VX008275.D  
 Acq On : 21 Mar 2019 05:46  
 Operator : JC/SP  
 Sample : K1945-06  
 Misc : 5.0mL/MSVOA X/WATER  
 ALS Vial : 49 Sample Multiplier: 1

Instrument :  
 MSVOA\_X  
 ClientSampleId :  
 M4-T4-OZ(POST-HYPO)

Quant Time: Mar 22 05:43:17 2019  
 Quant Method : Z:\VOASRV\HPCHEM1\MSVOA\_X\METHOD\82X031919W.M  
 Quant Title : SW846 8260  
 QLast Update : Tue Mar 19 13:15:13 2019  
 Response via : Initial Calibration

Internal Standards	R.T.	QIon	Response	Conc	Units	Dev(Min)
1) Pentafluorobenzene	5.62	168	8678	50.00	ug/l	-0.04
34) 1,4-Difluorobenzene	6.84	114	7010	50.00	ug/l	-0.02
63) Chlorobenzene-d5	10.11	117	33224	50.00	ug/l	0.00
72) 1,4-Dichlorobenzene-d4	12.08	152	55995	50.00	ug/l	0.00

## System Monitoring Compounds

33) 1,2-Dichloroethane-d4	6.07	65	426	3.26	ug/l	0.00
Spiked Amount	50.000		Recovery	=	6.52%	
35) Dibromofluoromethane	5.51	113	95	2.02	ug/l	0.01
Spiked Amount	50.000		Recovery	=	4.04%	
50) Toluene-d8	8.70	98	27537	154.77	ug/l	-0.01
Spiked Amount	50.000		Recovery	=	309.54%	
62) 4-Bromofluorobenzene	11.13	95	39322	641.88	ug/l	0.00
Spiked Amount	50.000		Recovery	=	1283.76%	

## Target Compounds

						Qvalue
2) Dichlorodifluoromethane	1.22	85	1649	15.673	ug/l #	1
4) Vinyl Chloride	1.54	62	182	1.383	ug/l #	1
5) Bromomethane	1.63	94	75	0.669	ug/l #	13
7) Trichlorofluoromethane	1.94	101	197	1.173	ug/l #	35
8) Diethyl Ether	2.11	74	110	1.273	ug/l	92
9) 1,1,2-Trichlorotrifluoroet	2.36	101	30	0.269	ug/l #	1
10) Methyl Iodide	2.49	142	1509	10.626	ug/l #	50
11) Tert butyl alcohol	3.01	59	140	5.004	ug/l #	73
12) 1,1-Dichloroethene	2.36	96	301	2.859	ug/l #	45
13) Acrolein	2.29	56	329	6.524	ug/l #	43
14) Allyl chloride	2.70	41	127	0.554	ug/l #	30
15) Acrylonitrile	3.13	53	148	2.000	ug/l #	49
16) Acetone	2.42	43	172	2.320	ug/l #	59
17) Carbon Disulfide	2.56	76	150	1.106	ug/l #	1
18) Methyl Acetate	2.73	43	396	2.308	ug/l #	74
19) Methyl tert-butyl Ether	3.17	73	152	0.399	ug/l #	1
20) Methylene Chloride	2.85	84	45	0.364	ug/l #	36
21) trans-1,2-Dichloroethene	3.15	96	71	0.624	ug/l #	1
22) Diisopropyl ether	3.84	45	95	0.212	ug/l #	51
23) Vinyl Acetate	3.79	43	83	0.216	ug/l #	73
25) 2-Butanone	4.63	43	140	1.279	ug/l #	70
26) 2,2-Dichloropropane	4.44	77	140	0.805	ug/l	84
27) cis-1,2-Dichloroethene	4.57	96	39	0.301	ug/l	51
28) Bromochloromethane	4.99	49	117	1.129	ug/l #	10
29) Tetrahydrofuran	5.10	42	396	5.789	ug/l #	77
30) Chloroform	5.17	83	93	0.431	ug/l #	18
31) Cyclohexane	5.56	56	181	0.835	ug/l #	18
32) 1,1,1-Trichloroethane	5.45	97	78	0.434	ug/l #	1
36) 1,1-Dichloropropene	5.82	75	182	2.230	ug/l #	28
37) Ethyl Acetate	4.82	43	23	0.238	ug/l #	1
38) Carbon Tetrachloride	5.73	117	107	1.471	ug/l #	12
39) Methylcyclohexane	7.45	83	150	1.527	ug/l #	39
40) Benzene	6.13	78	220	0.911	ug/l #	52
41) Methacrylonitrile	5.04	41	158	2.920	ug/l #	25

Data Path : Z:\VOASRV\HPCHEM1\MSVOA X\DATA\VX032019\  
 Data File : VX008275.D  
 Acq On : 21 Mar 2019 05:46  
 Operator : JC/SP  
 Sample : K1945-06  
 Misc : 5.0mL/MSVOA X/WATER  
 ALS Vial : 49 Sample Multiplier: 1

Instrument :  
 MSVOA\_X  
 ClientSampleId :  
 M4-T4-OZ(POST-HYPO)

Quant Time: Mar 22 05:43:17 2019  
 Quant Method : Z:\VOASRV\HPCHEM1\MSVOA\_X\METHOD\82X031919W.M  
 Quant Title : SW846 8260  
 QLast Update : Tue Mar 19 13:15:13 2019  
 Response via : Initial Calibration

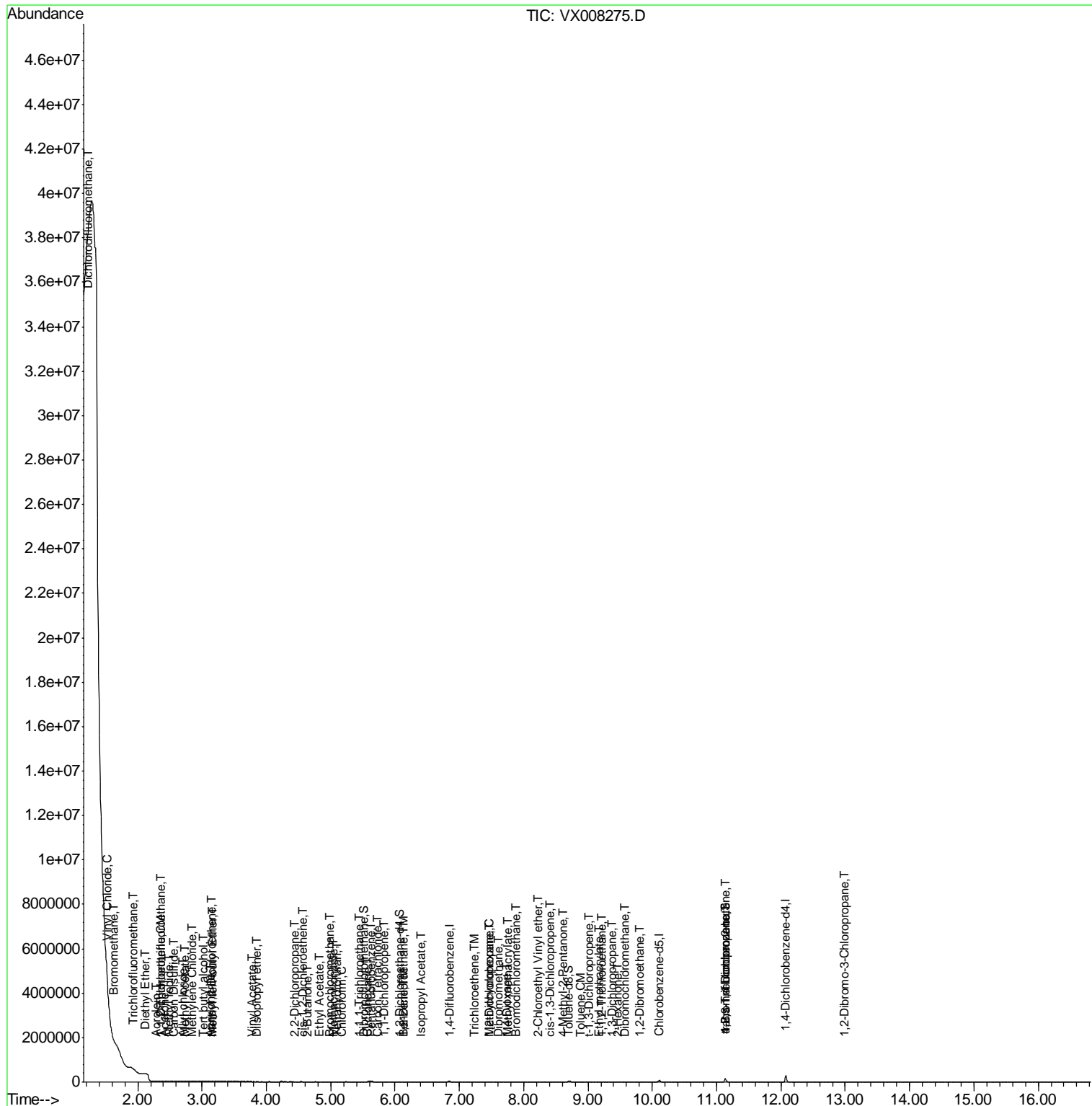
Internal Standards	R.T.	QIon	Response	Conc	Units	Dev(Min)
42) 1,2-Dichloroethane	6.14	62	247	2.791	ug/l	86
43) Isopropyl Acetate	6.40	43	116	0.750	ug/l #	1
44) Trichloroethene	7.23	130	44	0.745	ug/l	97
45) 1,2-Dichloropropane	7.48	63	276	4.081	ug/l #	1
46) Dibromomethane	7.62	93	19	0.464	ug/l #	1
47) Bromodichloromethane	7.89	83	83	1.064	ug/l #	26
48) Methyl methacrylate	7.76	41	63	0.766	ug/l #	1
49) 1,4-Dioxane	7.74	88	189	130.255	ug/l	96
51) 4-Methyl-2-Pentanone	8.61	43	334	3.341	ug/l	92
52) Toluene	8.89	92	56	0.391	ug/l	98
53) t-1,3-Dichloropropene	9.01	75	168	3.093	ug/l #	70
54) cis-1,3-Dichloropropene	8.41	75	46	0.475	ug/l #	65
55) 1,1,2-Trichloroethane	9.22	97	53	0.915	ug/l #	29
56) Ethyl methacrylate	9.17	69	181	2.289	ug/l #	62
57) 1,3-Dichloropropane	9.37	76	257	2.509	ug/l	91
58) 2-Chloroethyl Vinyl ether	8.23	63	69	1.454	ug/l	95
59) 2-Hexanone	9.46	43	185	2.404	ug/l	98
60) Dibromochloromethane	9.58	129	45	0.809	ug/l	63
61) 1,2-Dibromoethane	9.80	107	55	0.910	ug/l	85
76) 1,2,3-Trichloropropane	11.13	75	20741	13.170	ug/l #	41
81) trans-1,4-Dichloro-2-buten	11.13	75	20741	34.045	ug/l #	13
92) 1,2-Dibromo-3-Chloropropan	13.00	75	95	0.239	ug/l #	1

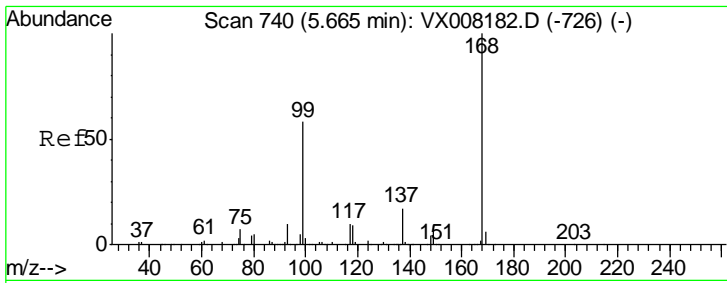
(#) = qualifier out of range (m) = manual integration (+) = signals summed

Data Path : Z:\VOASRV\HPCHEM1\MSVOA X\DATA\VX032019\  
 Data File : VX008275.D  
 Acq On : 21 Mar 2019 05:46  
 Operator : JC/SP  
 Sample : K1945-06  
 Misc : 5.0mL/MSVOA X/WATER  
 ALS Vial : 49 Sample Multiplier: 1

Instrument :  
 MSVOA\_X  
 Client Sampled :  
 M4-T4-OZ(POST-HYPO)

Quant Time: Mar 22 05:43:17 2019  
 Quant Method : Z:\VOASRV\HPCHEM1\MSVOA\_X\METHOD\82X031919W.M  
 Quant Title : SW846 8260  
 QLast Update : Tue Mar 19 13:15:13 2019  
 Response via : Initial Calibration

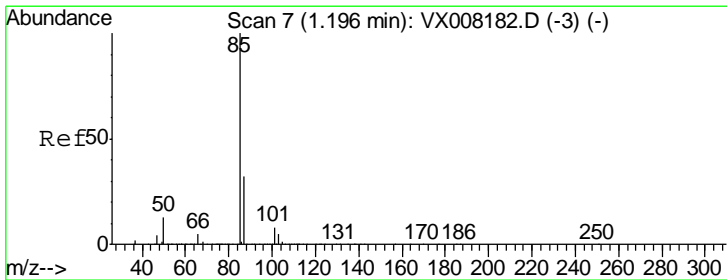
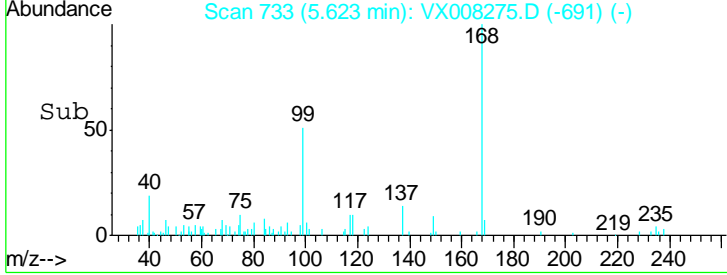
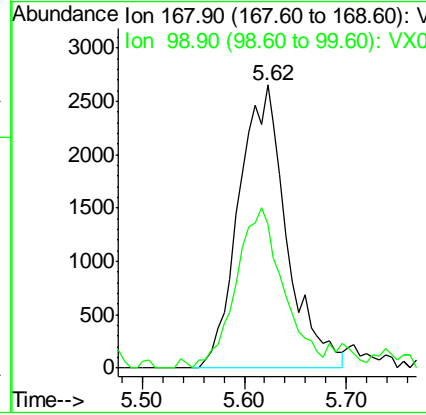
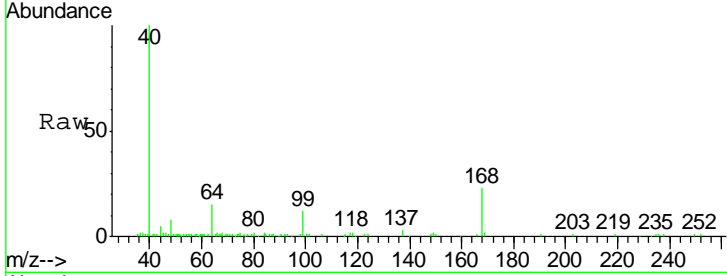




#1  
 Pentafluorobenzene  
 Concen: 50.000 ug/l  
 RT: 5.62 min Scan# 733  
 Delta R.T. -0.04 min  
 Lab File: VX008275.D  
 Acq: 21 Mar 2019 05:46

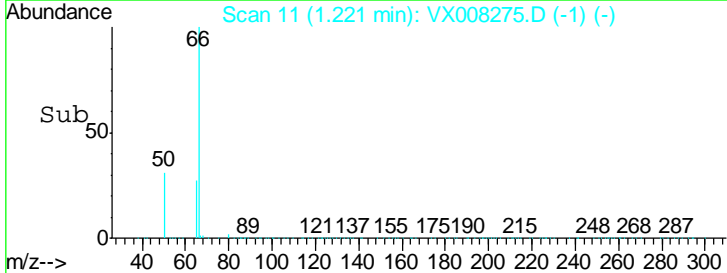
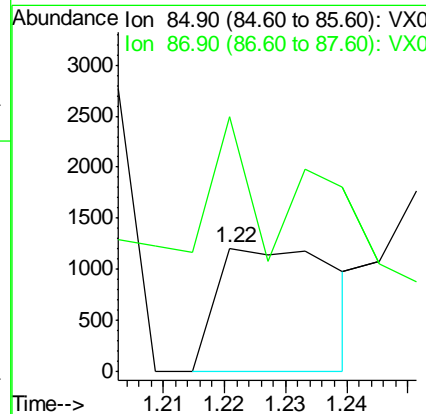
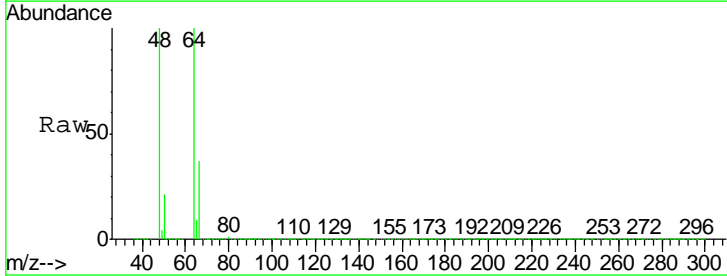
Instrument : MSVOA\_X  
 ClientSampleId : M4-T4-OZ(POST-HYPO)

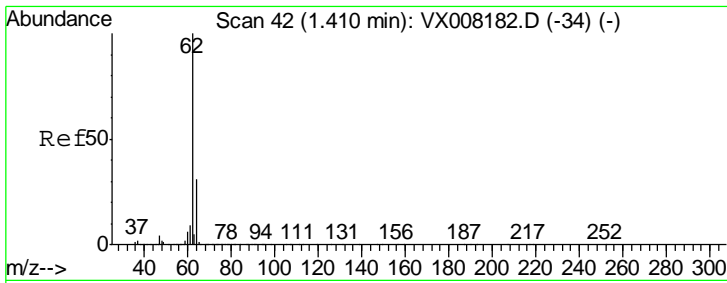
Tgt Ion	Resp	Lower	Upper
168	100		
99	50.6	37.6	56.4



#2  
 Dichlorodifluoromethane  
 Concen: 15.673 ug/l  
 RT: 1.22 min Scan# 11  
 Delta R.T. 0.02 min  
 Lab File: VX008275.D  
 Acq: 21 Mar 2019 05:46

Tgt Ion	Resp	Lower	Upper
85	100		
87	110.7	16.4	49.1#

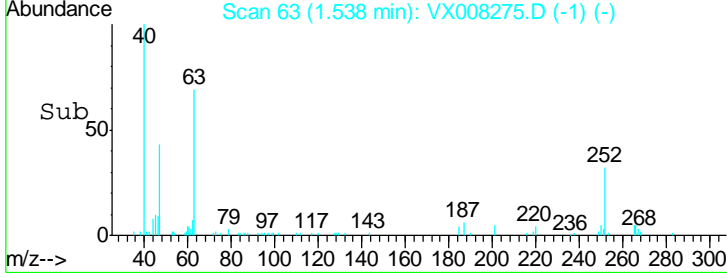
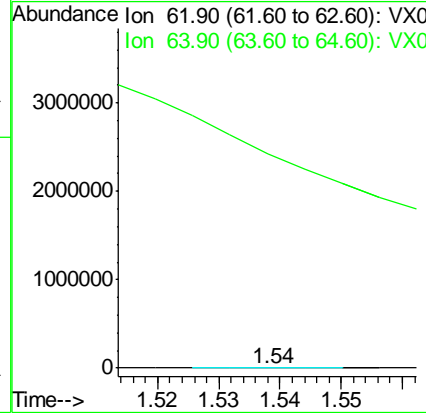
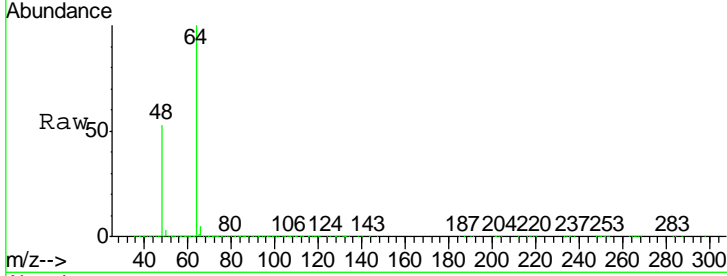




#4  
 Vinyl Chloride  
 Concen: 1.383 ug/l  
 RT: 1.54 min Scan# 63  
 Delta R.T. 0.13 min  
 Lab File: VX008275.D  
 Acq: 21 Mar 2019 05:46

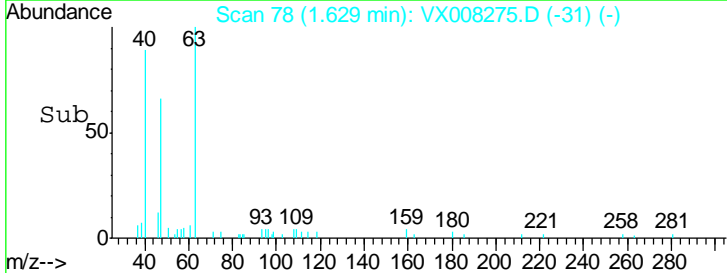
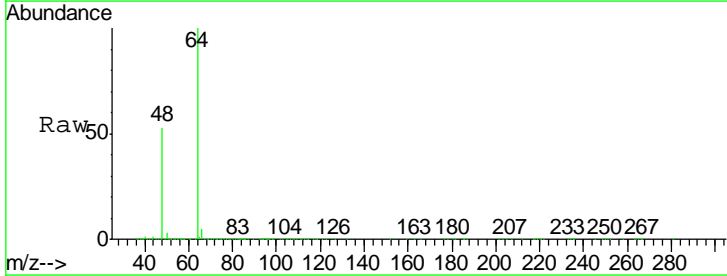
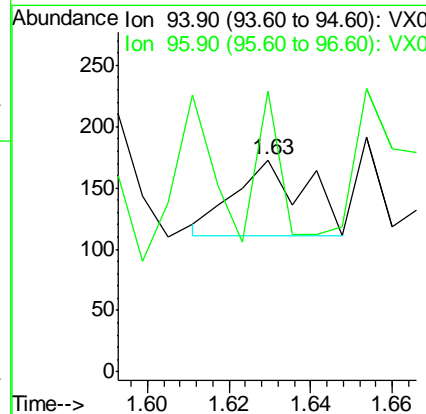
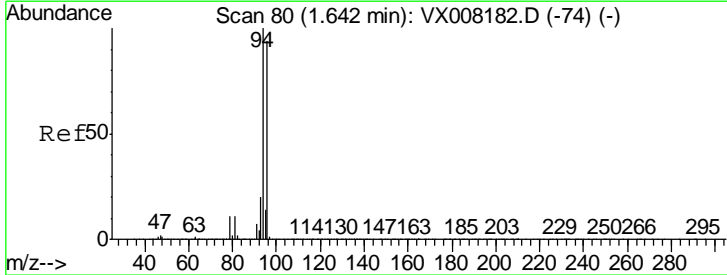
**Instrument :**  
 MSVOA\_X  
**ClientSampled :**  
 M4-T4-OZ(POST-HYPO)

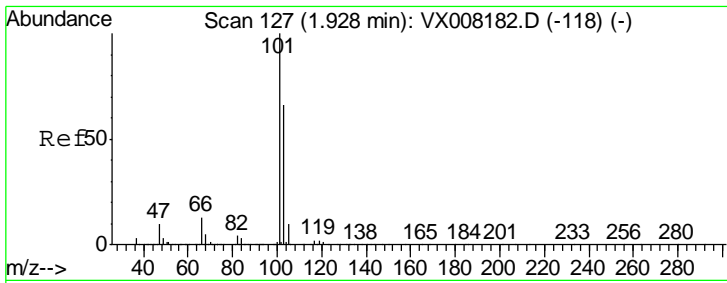
Tgt Ion: 62 Resp: 182  
 Ion Ratio Lower Upper  
 62 100  
 64 69434.2 25.3 37.9#



#5  
 Bromomethane  
 Concen: 0.669 ug/l  
 RT: 1.63 min Scan# 78  
 Delta R.T. -0.01 min  
 Lab File: VX008275.D  
 Acq: 21 Mar 2019 05:46

Tgt Ion: 94 Resp: 75  
 Ion Ratio Lower Upper  
 94 100  
 96 179.0 75.5 113.3#

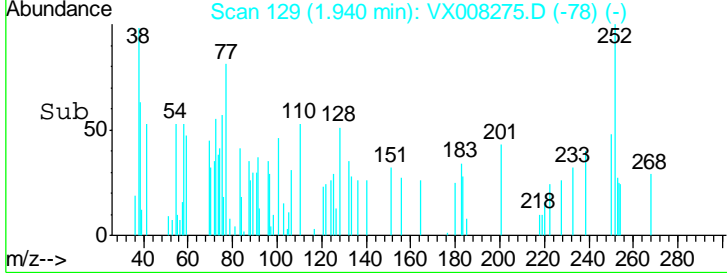
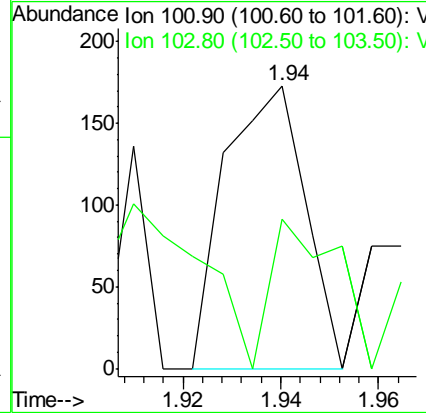
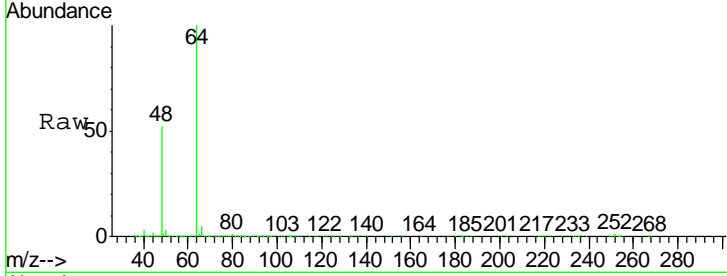




#7  
 Trichlorofluoromethane  
 Concen: 1.173 ug/l  
 RT: 1.94 min Scan# 129  
 Delta R.T. 0.01 min  
 Lab File: VX008275.D  
 Acq: 21 Mar 2019 05:46

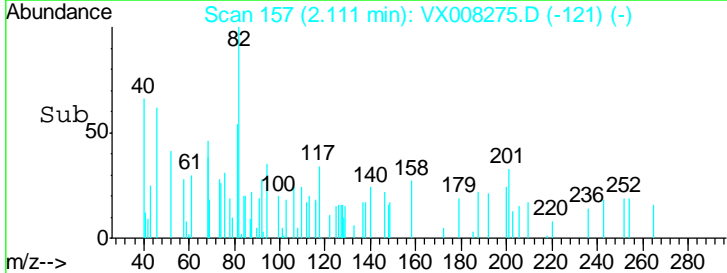
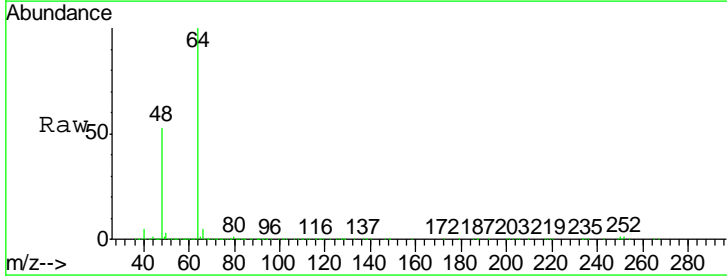
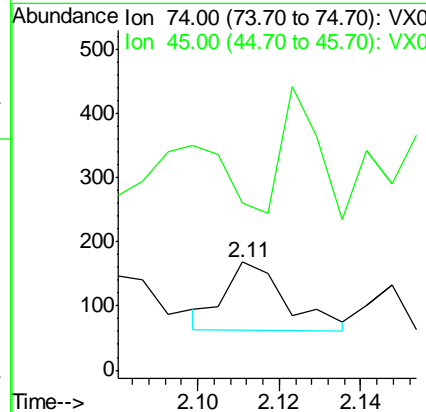
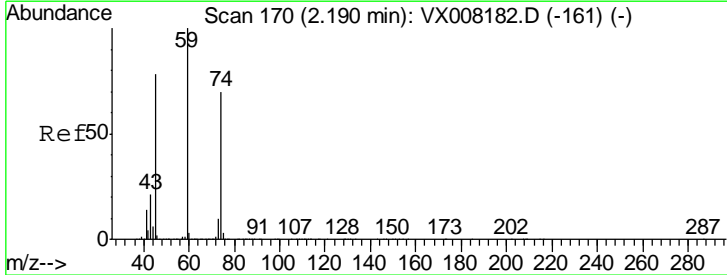
**Instrument :**  
 MSVOA\_X  
**ClientSampled :**  
 M4-T4-OZ(POST-HYPO)

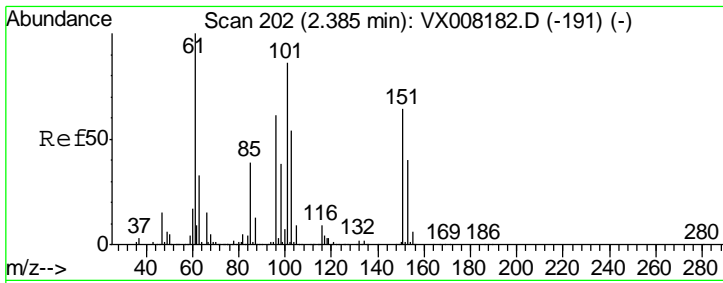
Tgt Ion:101 Resp: 197  
 Ion Ratio Lower Upper  
 101 100  
 103 12.7 50.4 75.6#



#8  
 Diethyl Ether  
 Concen: 1.273 ug/l  
 RT: 2.11 min Scan# 157  
 Delta R.T. -0.08 min  
 Lab File: VX008275.D  
 Acq: 21 Mar 2019 05:46

Tgt Ion: 74 Resp: 110  
 Ion Ratio Lower Upper  
 74 100  
 45 112.7 52.1 156.4

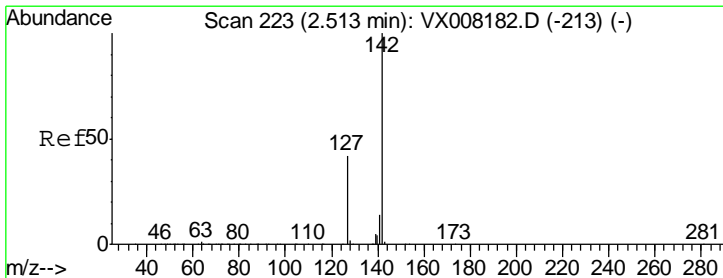
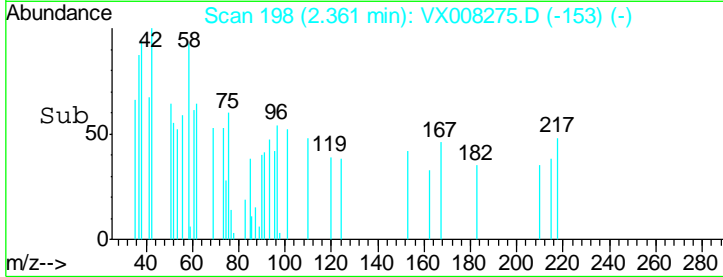
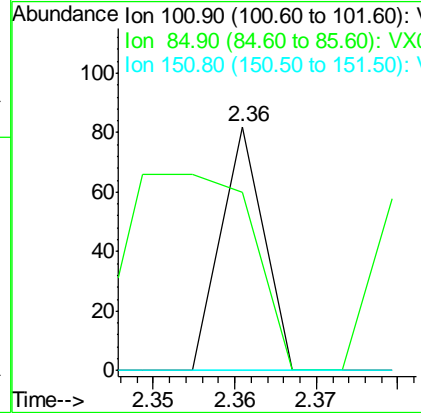
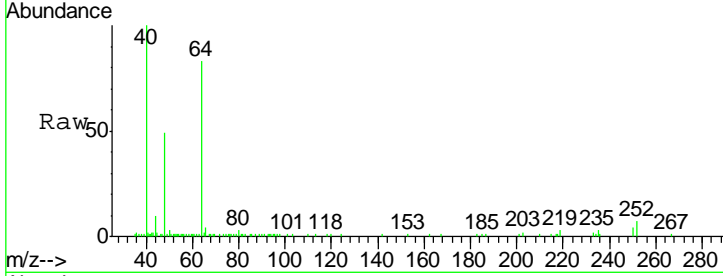




#9  
 1,1,2-Trichlorotrifluoroethane  
 Concen: 0.269 ug/l  
 RT: 2.36 min Scan# 198  
 Delta R.T. -0.02 min  
 Lab File: VX008275.D  
 Acq: 21 Mar 2019 05:46

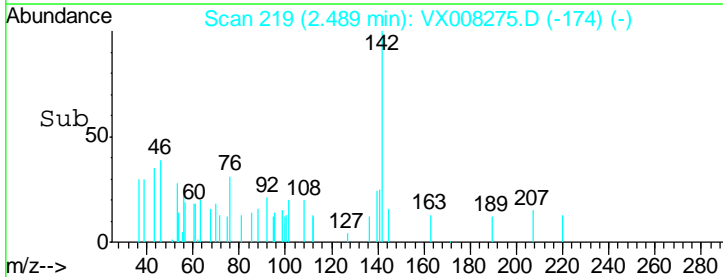
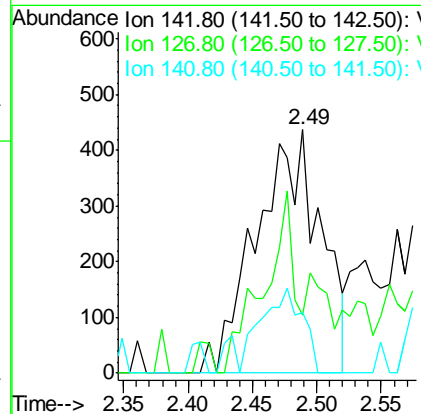
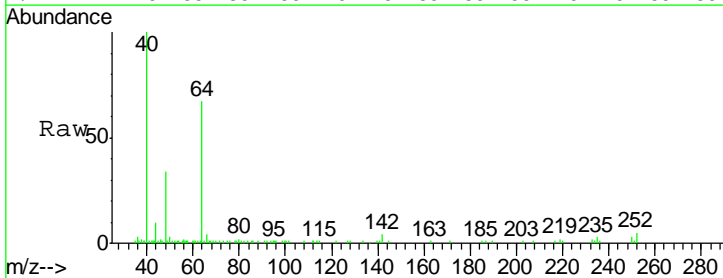
**Instrument :**  
 MSVOA\_X  
**ClientSampled :**  
 M4-T4-OZ(POST-HYPO)

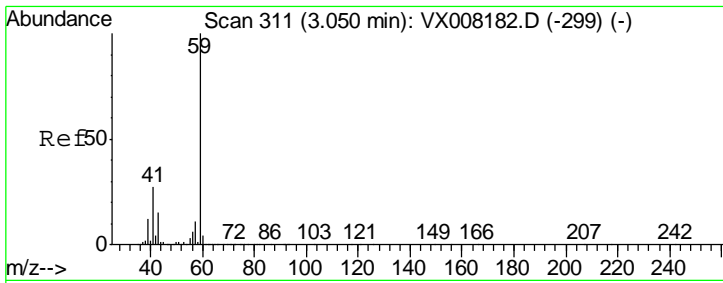
Tgt Ion	Resp	Lower	Upper
101	100		
85	233.3	33.8	50.6#
151	0.0	69.1	103.7#



#10  
 Methyl Iodide  
 Concen: 10.626 ug/l  
 RT: 2.49 min Scan# 219  
 Delta R.T. -0.02 min  
 Lab File: VX008275.D  
 Acq: 21 Mar 2019 05:46

Tgt Ion	Resp	Lower	Upper
142	100		
127	5.8	32.1	48.1#
141	0.0	11.4	17.2#

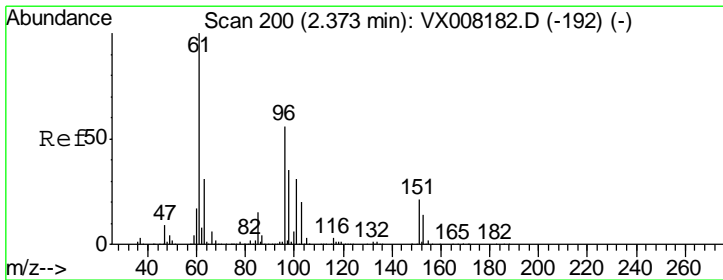
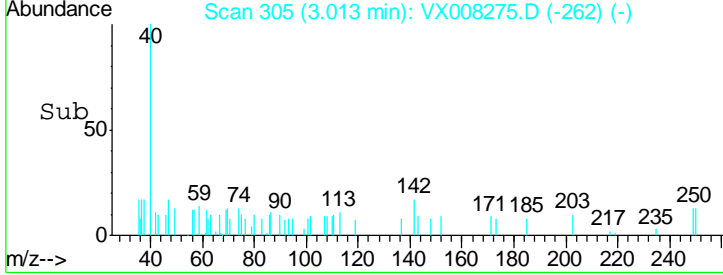
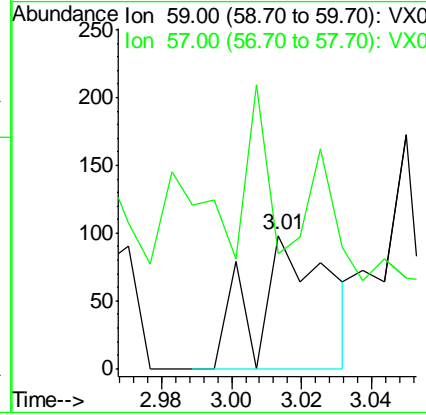
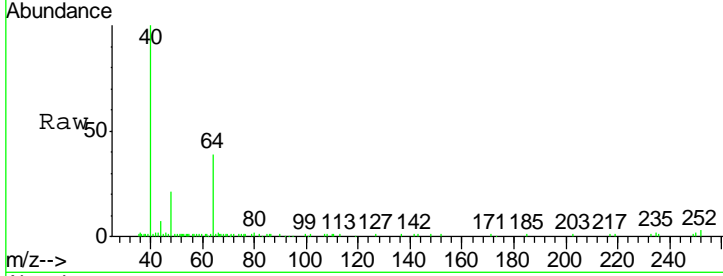




#11  
 Tert butyl alcohol  
 Concen: 5.004 ug/l  
 RT: 3.01 min Scan# 305  
 Delta R.T. -0.04 min  
 Lab File: VX008275.D  
 Acq: 21 Mar 2019 05:46

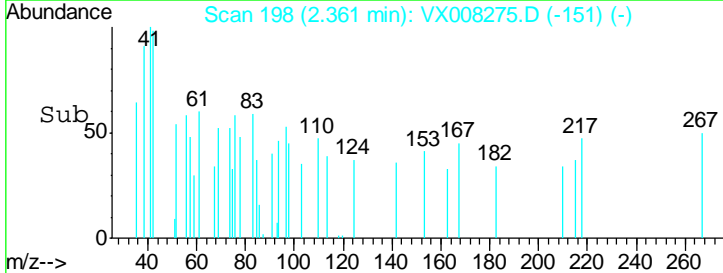
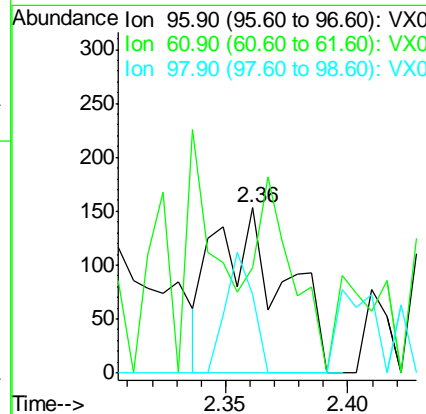
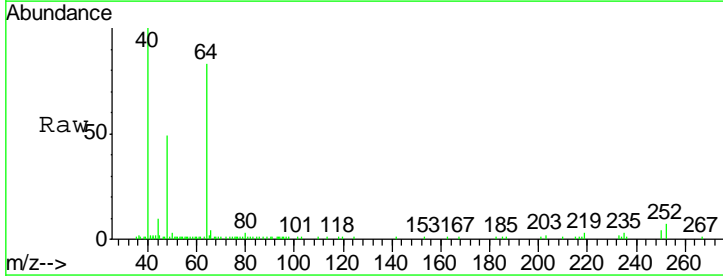
Instrument :  
 MSVOA\_X  
 ClientSampled :  
 M4-T4-OZ(POST-HYPO)

Tgt Ion	Resp	Lower	Upper
59	100		
57	0.0	8.2	12.2#

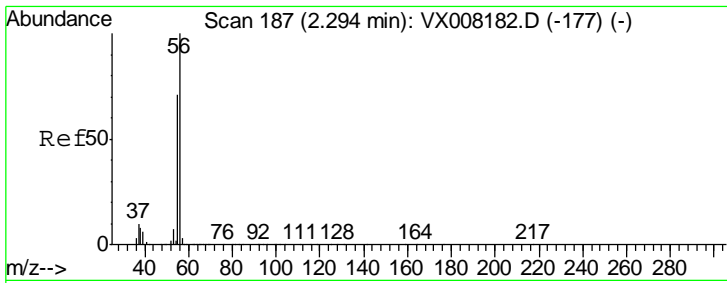


#12  
 1,1-Dichloroethene  
 Concen: 2.859 ug/l  
 RT: 2.36 min Scan# 198  
 Delta R.T. -0.01 min  
 Lab File: VX008275.D  
 Acq: 21 Mar 2019 05:46

Tgt Ion	Resp	Lower	Upper
96	100		
61	70.6	129.8	194.6#
98	47.7	51.0	76.6#



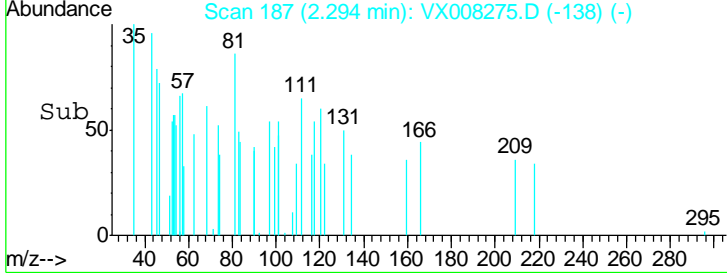
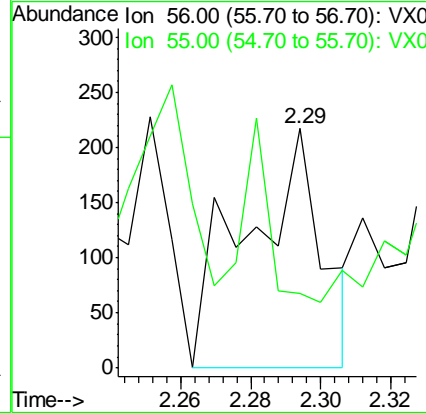
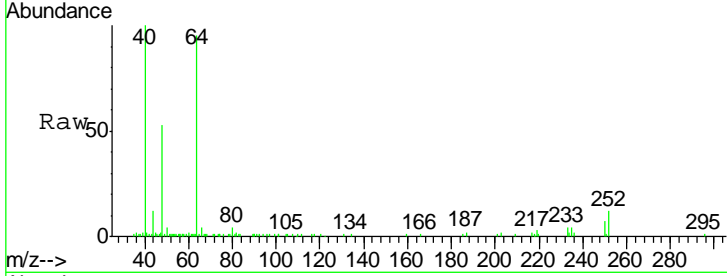




#13  
 Acrolein  
 Concen: 6.524 ug/l  
 RT: 2.29 min Scan# 187  
 Delta R.T. 0.00 min  
 Lab File: VX008275.D  
 Acq: 21 Mar 2019 05:46

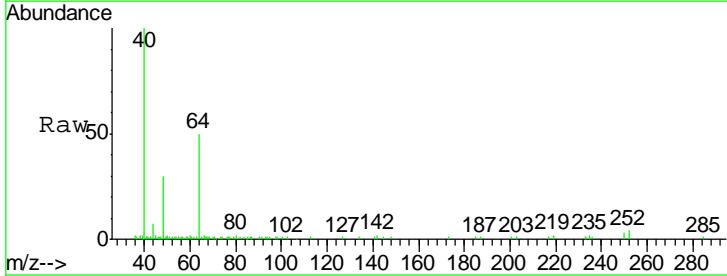
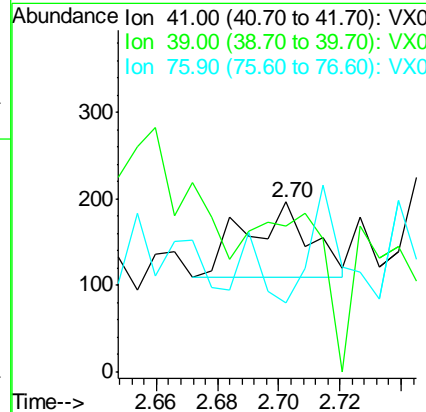
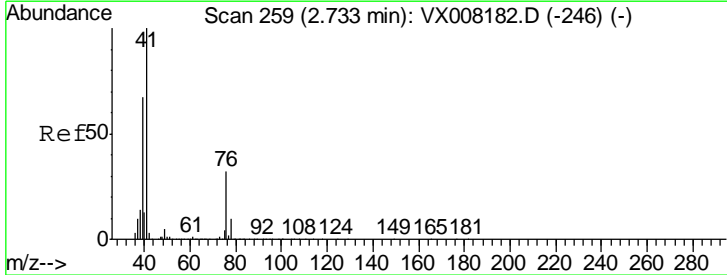
**Instrument :**  
 MSVOA\_X  
**ClientSampled :**  
 M4-T4-OZ(POST-HYPO)

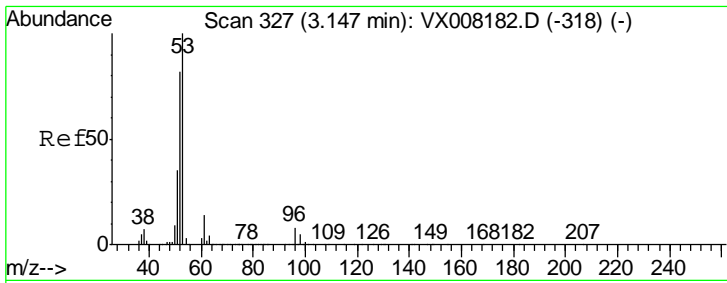
Tgt Ion	Resp	Lower	Upper
56	100		
55	24.9	57.8	86.6#



#14  
 Allyl chloride  
 Concen: 0.554 ug/l  
 RT: 2.70 min Scan# 254  
 Delta R.T. -0.03 min  
 Lab File: VX008275.D  
 Acq: 21 Mar 2019 05:46

Tgt Ion	Resp	Lower	Upper
41	100		
39	0.0	46.1	69.1#
76	0.0	24.0	36.0#

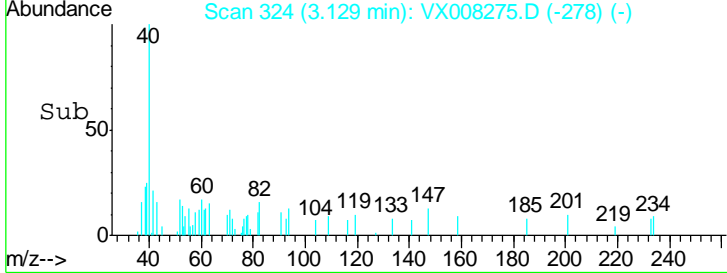
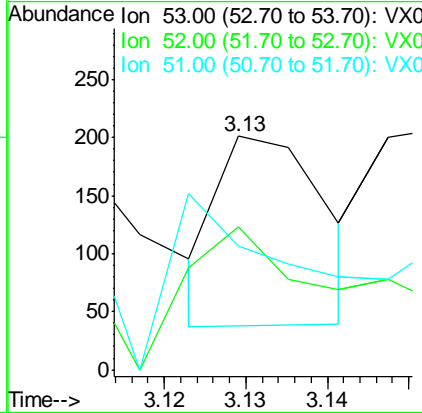
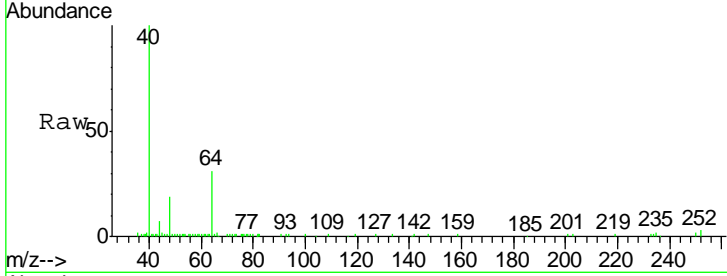




#15  
 Acrylonitrile  
 Concen: 2.000 ug/l  
 RT: 3.13 min Scan# 324  
 Delta R.T. -0.02 min  
 Lab File: VX008275.D  
 Acq: 21 Mar 2019 05:46

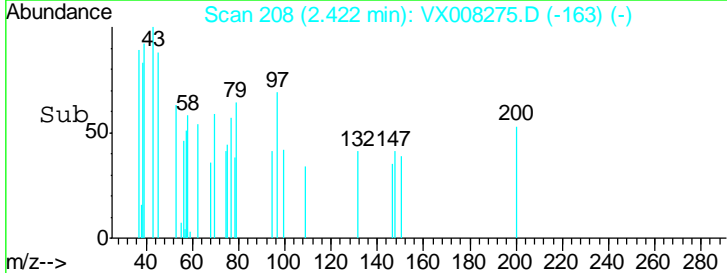
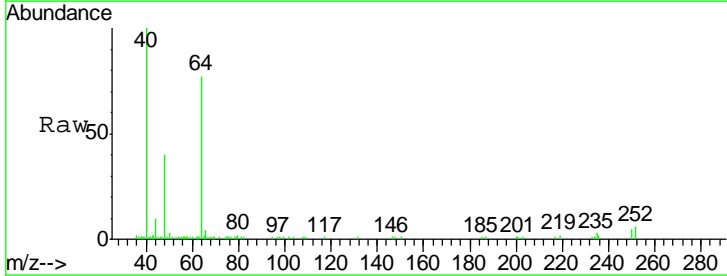
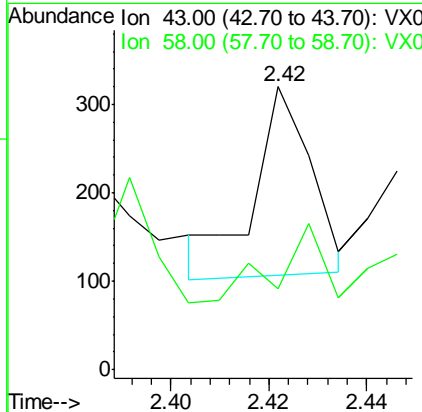
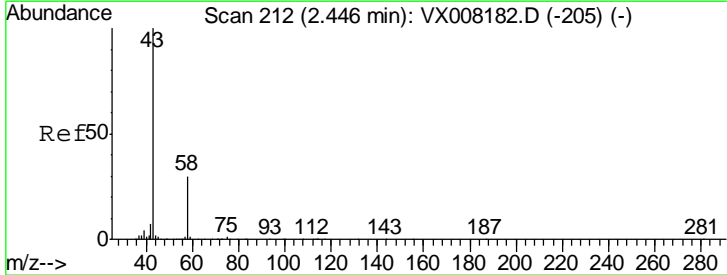
**Instrument :**  
 MSVOA\_X  
**ClientSampled :**  
 M4-T4-OZ(POST-HYPO)

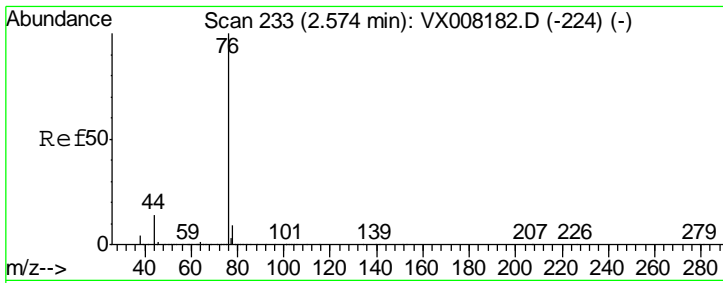
Tgt Ion	Resp	Lower	Upper
53	100		
52	88.5	66.0	99.0
51	125.7	28.0	42.0#



#16  
 Acetone  
 Concen: 2.320 ug/l  
 RT: 2.42 min Scan# 208  
 Delta R.T. -0.02 min  
 Lab File: VX008275.D  
 Acq: 21 Mar 2019 05:46

Tgt Ion	Resp	Lower	Upper
43	100		
58	9.1	25.5	38.3#

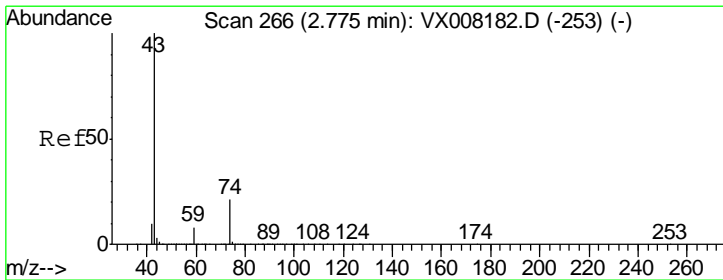
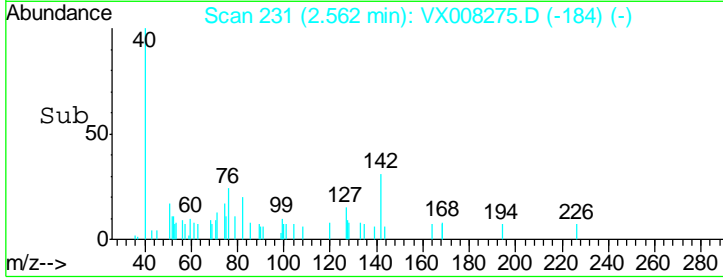
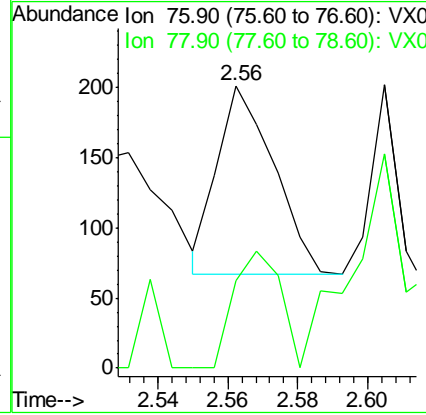
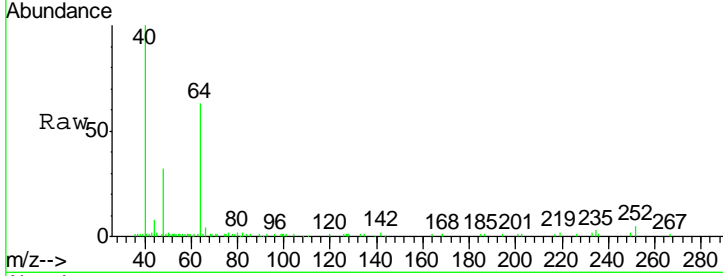




#17  
 Carbon Disulfide  
 Concen: 1.106 ug/l  
 RT: 2.56 min Scan# 231  
 Delta R.T. -0.01 min  
 Lab File: VX008275.D  
 Acq: 21 Mar 2019 05:46

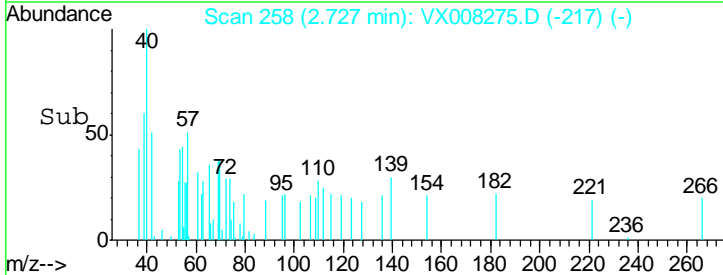
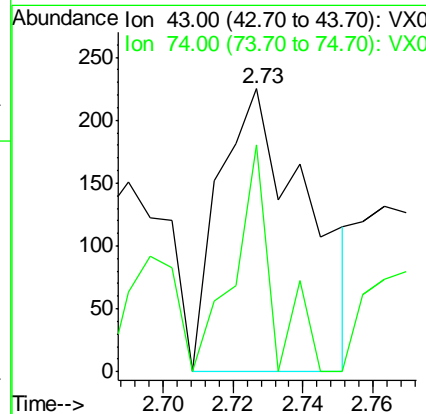
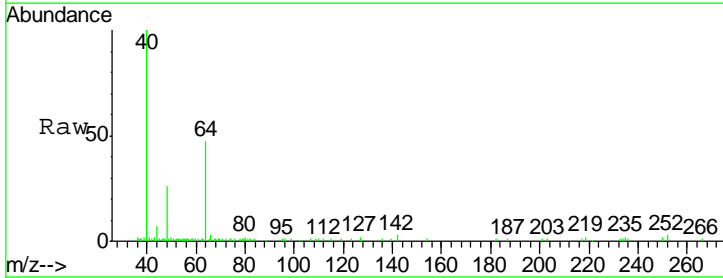
Instrument :  
 MSVOA\_X  
 ClientSampled :  
 M4-T4-OZ(POST-HYPO)

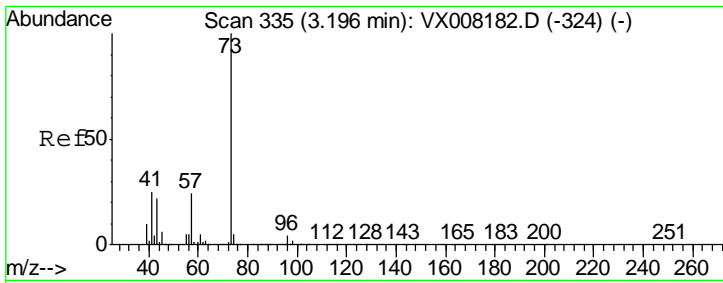
Tgt Ion: 76 Resp: 150  
 Ion Ratio Lower Upper  
 76 100  
 78 46.3 7.2 10.8#



#18  
 Methyl Acetate  
 Concen: 2.308 ug/l  
 RT: 2.73 min Scan# 258  
 Delta R.T. -0.05 min  
 Lab File: VX008275.D  
 Acq: 21 Mar 2019 05:46

Tgt Ion: 43 Resp: 396  
 Ion Ratio Lower Upper  
 43 100  
 74 34.8 17.8 26.6#

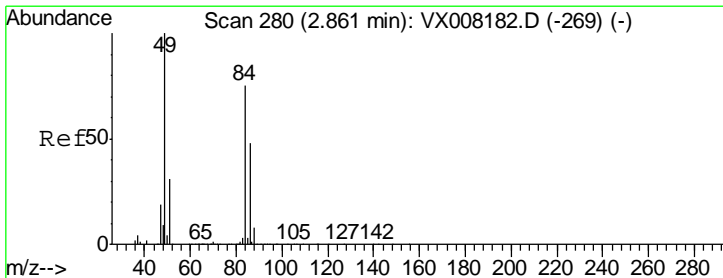
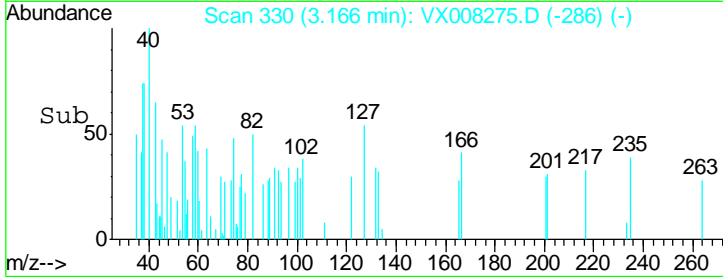
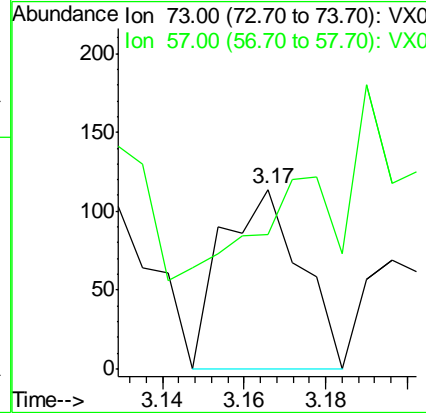
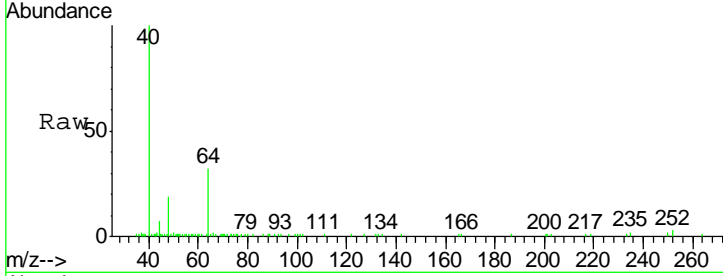




#19  
Methyl tert-butyl Ether  
Concen: 0.399 ug/l  
RT: 3.17 min Scan# 330  
Delta R.T. -0.03 min  
Lab File: VX008275.D  
Acq: 21 Mar 2019 05:46

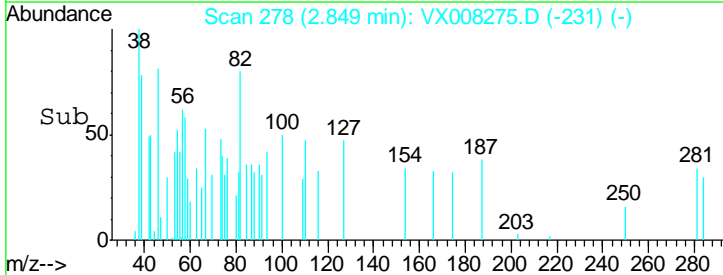
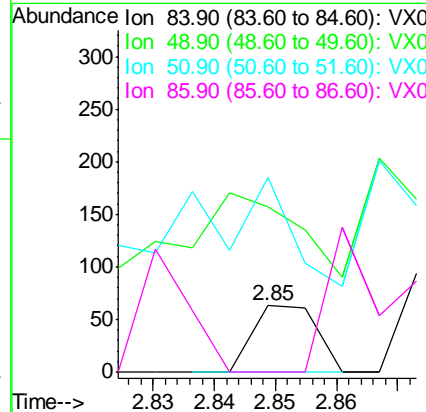
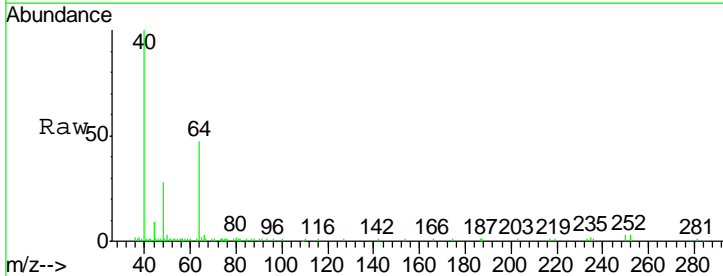
Instrument :  
MSVOA\_X  
ClientSampled :  
M4-T4-OZ(POST-HYPO)

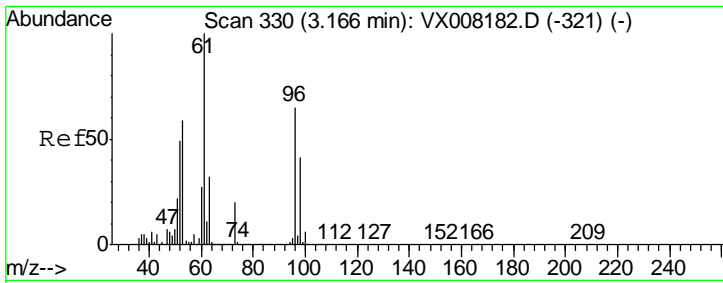
Tgt Ion: 73 Resp: 152  
Ion Ratio Lower Upper  
73 100  
57 106.1 18.2 27.4#



#20  
Methylene Chloride  
Concen: 0.364 ug/l  
RT: 2.85 min Scan# 278  
Delta R.T. -0.01 min  
Lab File: VX008275.D  
Acq: 21 Mar 2019 05:46

Tgt Ion: 84 Resp: 45  
Ion Ratio Lower Upper  
84 100  
49 106.3 99.3 148.9  
51 163.5 31.3 46.9#  
86 7.9 52.6 79.0#

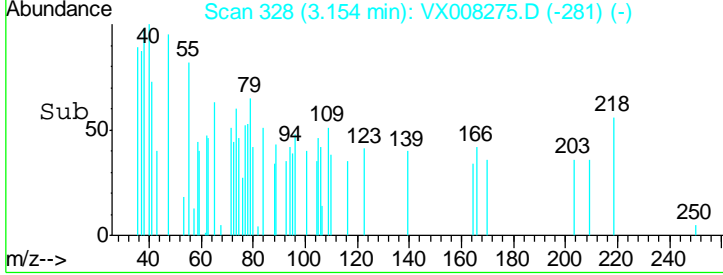
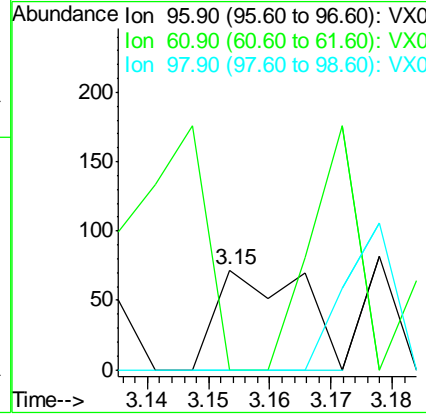
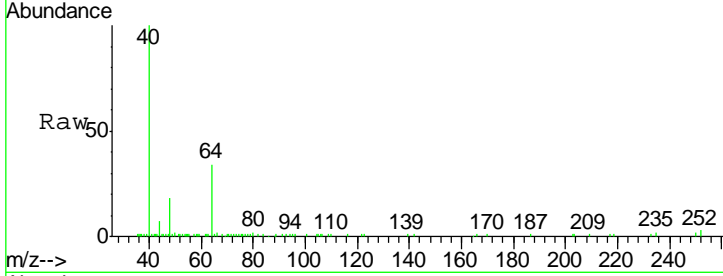




#21  
 trans-1,2-Dichloroethene  
 Concen: 0.624 ug/l  
 RT: 3.15 min Scan# 328  
 Delta R.T. -0.01 min  
 Lab File: VX008275.D  
 Acq: 21 Mar 2019 05:46

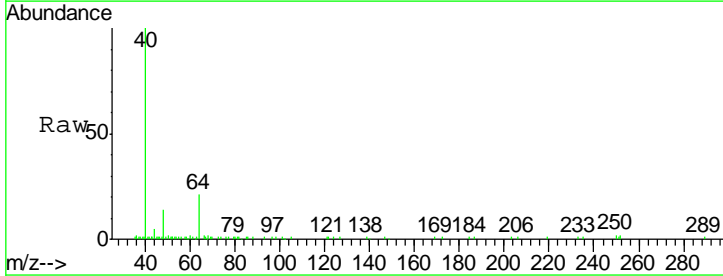
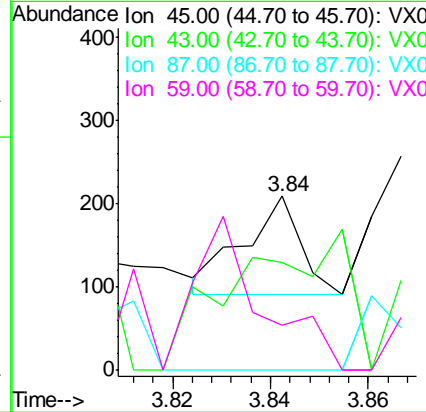
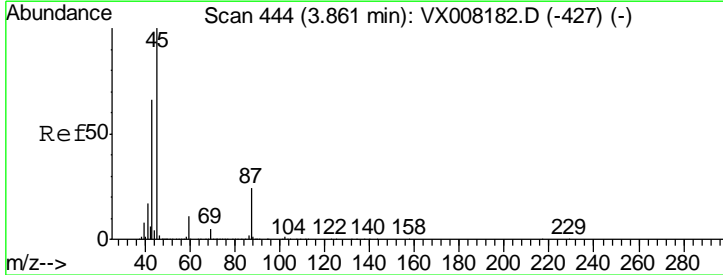
**Instrument :**  
 MSVOA\_X  
**ClientSampled :**  
 M4-T4-OZ(POST-HYPO)

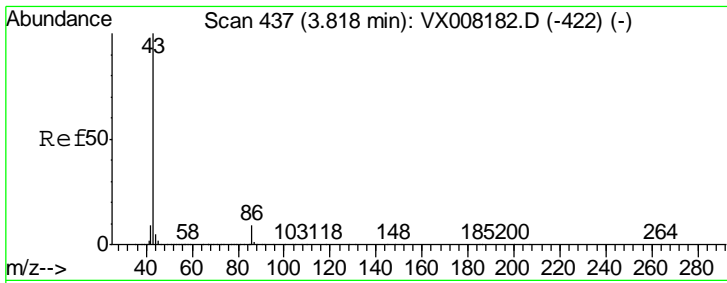
Tgt Ion	Resp	Lower	Upper
96	100		
61	0.0	114.4	171.6#
98	0.0	51.1	76.7#



#22  
 Diisopropyl ether  
 Concen: 0.212 ug/l  
 RT: 3.84 min Scan# 441  
 Delta R.T. -0.02 min  
 Lab File: VX008275.D  
 Acq: 21 Mar 2019 05:46

Tgt Ion	Resp	Lower	Upper
45	100		
43	30.6	45.3	67.9#
87	0.0	21.4	32.0#
59	54.1	9.5	14.3#

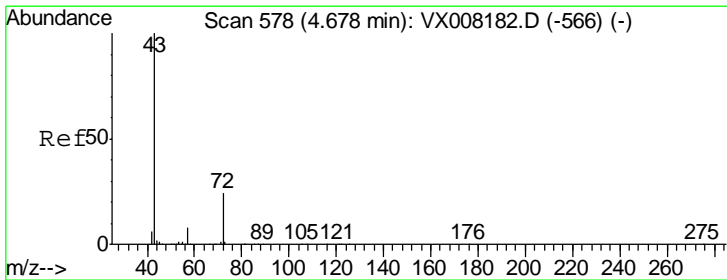
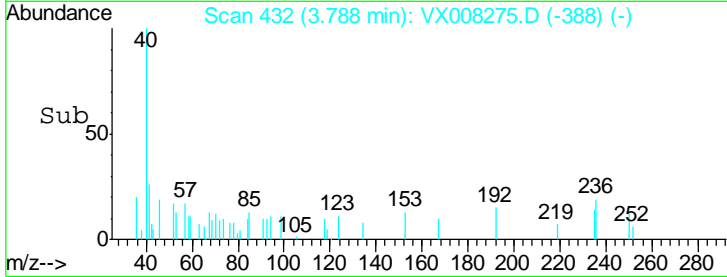
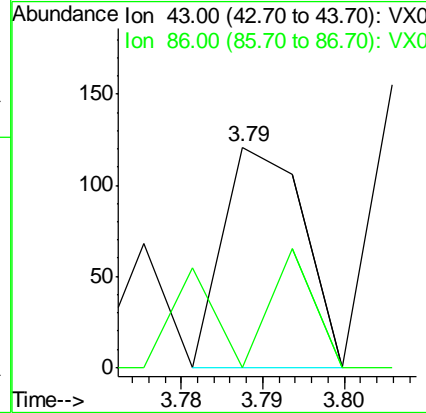
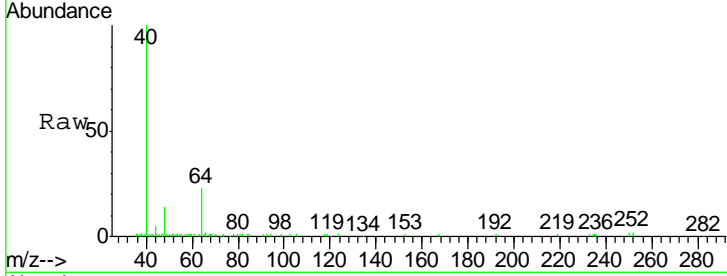




#23  
 Vinyl Acetate  
 Concen: 0.216 ug/l  
 RT: 3.79 min Scan# 432  
 Delta R.T. -0.03 min  
 Lab File: VX008275.D  
 Acq: 21 Mar 2019 05:46

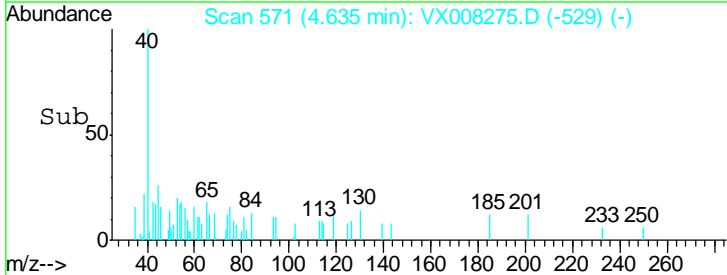
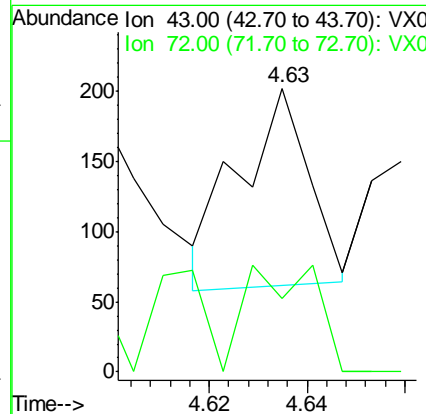
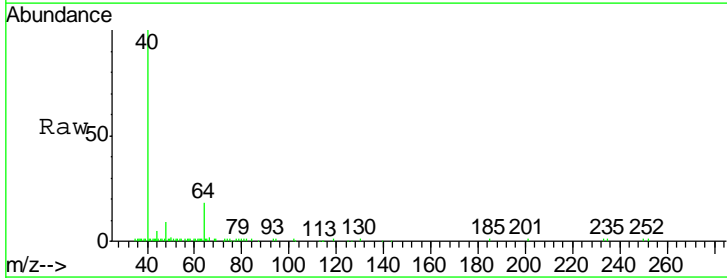
Instrument :  
 MSVOA\_X  
 ClientSampled :  
 M4-T4-OZ(POST-HYPO)

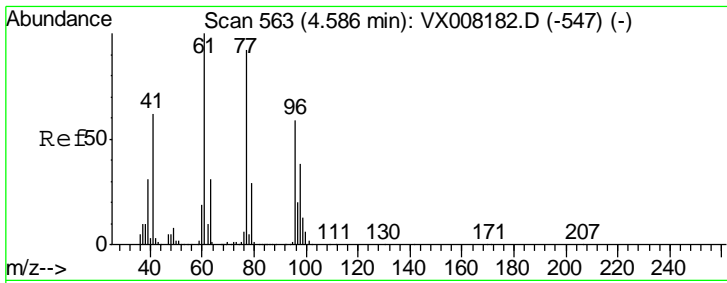
Tgt Ion	Ratio	Lower	Upper
43	100		
86	0.0	7.9	11.9#



#25  
 2-Butanone  
 Concen: 1.279 ug/l  
 RT: 4.63 min Scan# 571  
 Delta R.T. -0.04 min  
 Lab File: VX008275.D  
 Acq: 21 Mar 2019 05:46

Tgt Ion	Ratio	Lower	Upper
43	100		
72	39.7	19.9	29.9#

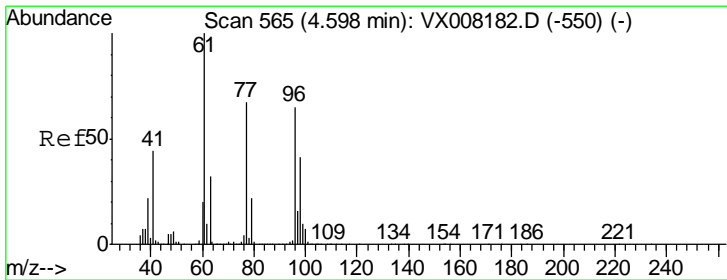
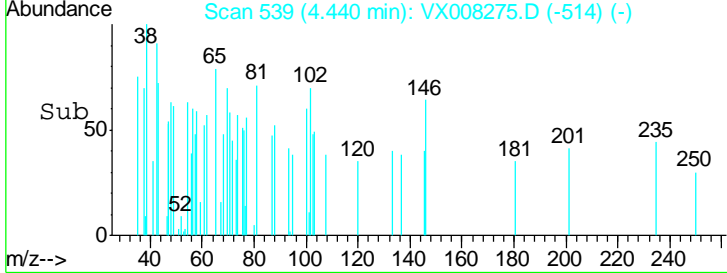
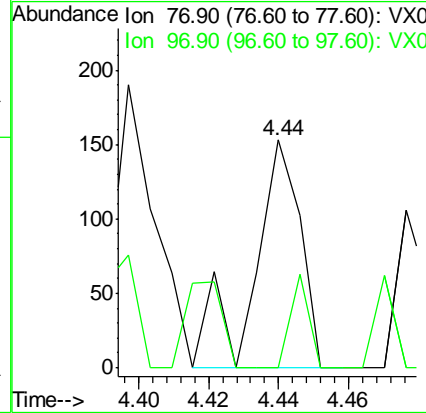
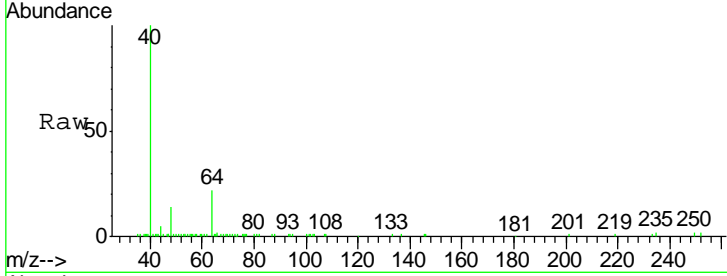




#26  
 2,2-Dichloropropane  
 Concen: 0.805 ug/l  
 RT: 4.44 min Scan# 539  
 Delta R.T. -0.15 min  
 Lab File: VX008275.D  
 Acq: 21 Mar 2019 05:46

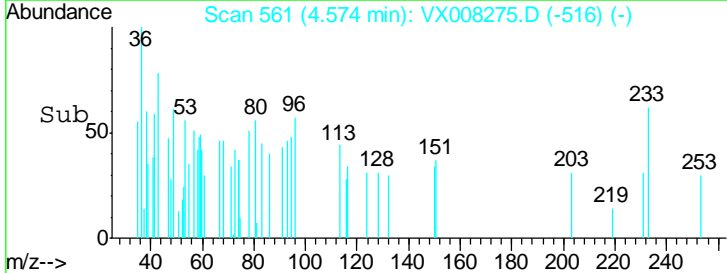
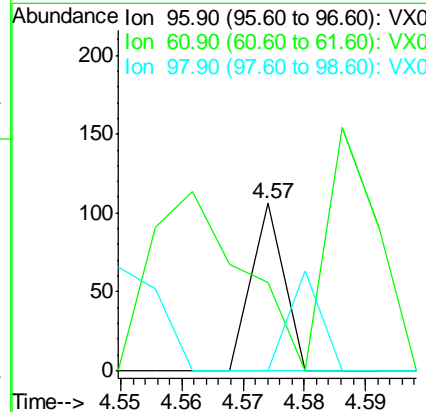
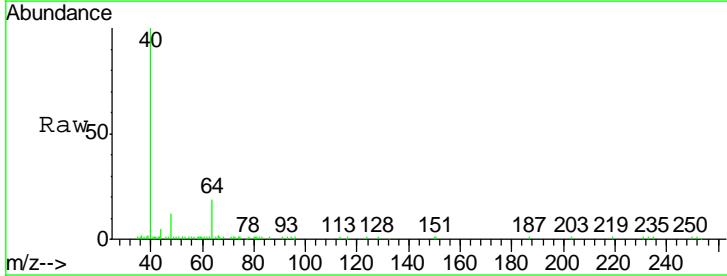
**Instrument :**  
 MSVOA\_X  
**ClientSampled :**  
 M4-T4-OZ(POST-HYPO)

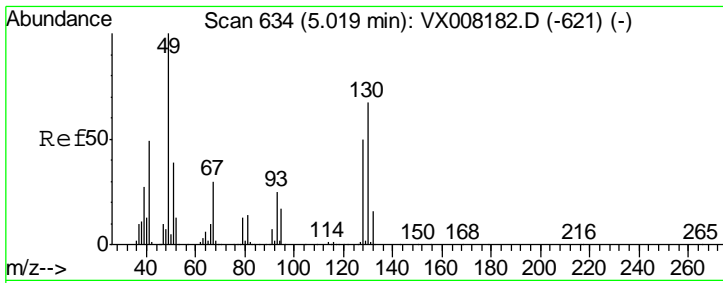
Tgt Ion: 77 Resp: 140  
 Ion Ratio Lower Upper  
 77 100  
 97 16.4 12.2 36.6



#27  
 cis-1,2-Dichloroethene  
 Concen: 0.301 ug/l  
 RT: 4.57 min Scan# 561  
 Delta R.T. -0.02 min  
 Lab File: VX008275.D  
 Acq: 21 Mar 2019 05:46

Tgt Ion: 96 Resp: 39  
 Ion Ratio Lower Upper  
 96 100  
 61 228.2 0.0 288.0  
 98 59.0 0.0 129.0



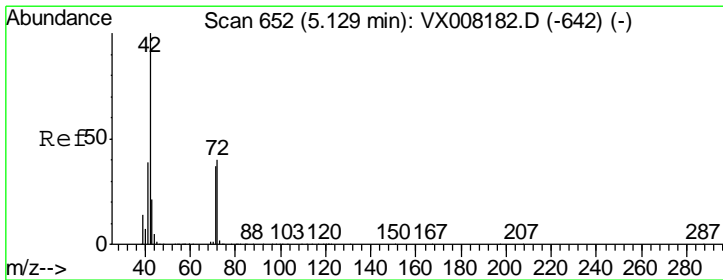
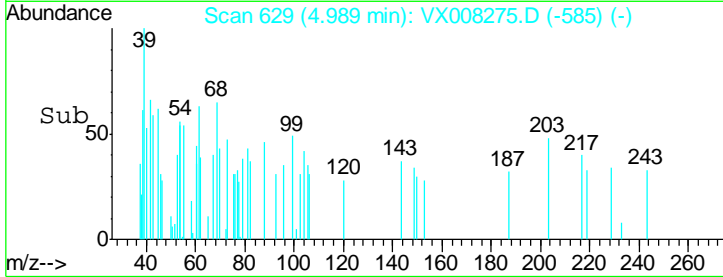
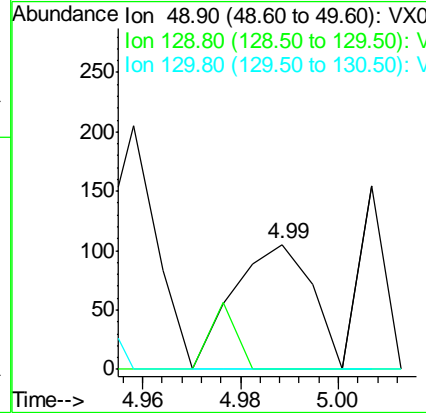
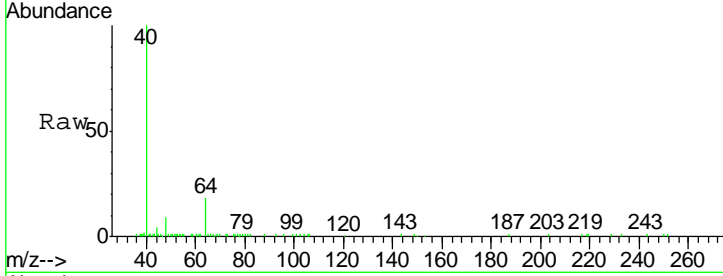


#28  
 Bromochloromethane  
 Concen: 1.129 ug/l  
 RT: 4.99 min Scan# 629  
 Delta R.T. -0.03 min  
 Lab File: VX008275.D  
 Acq: 21 Mar 2019 05:46

Instrument :  
 MSVOA\_X  
 ClientSampled :  
 M4-T4-OZ(POST-HYPO)

Tgt Ion: 49 Resp: 117

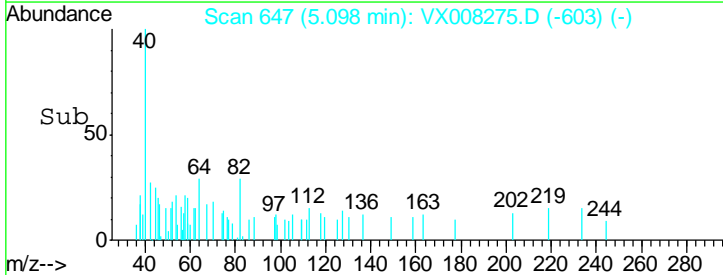
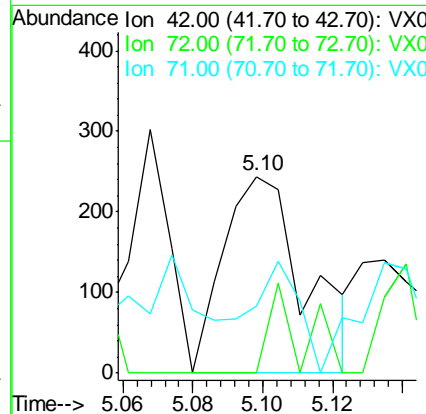
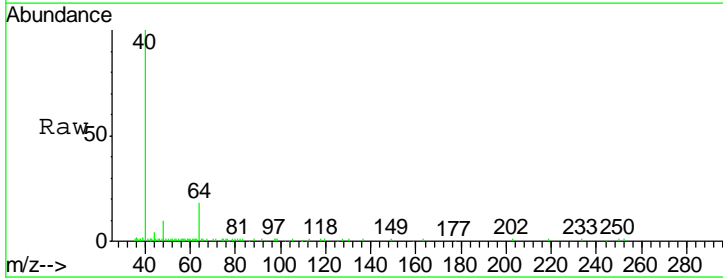
Ion	Ratio	Lower	Upper
49	100		
129	17.9	0.0	4.0#
130	0.0	65.0	97.4#



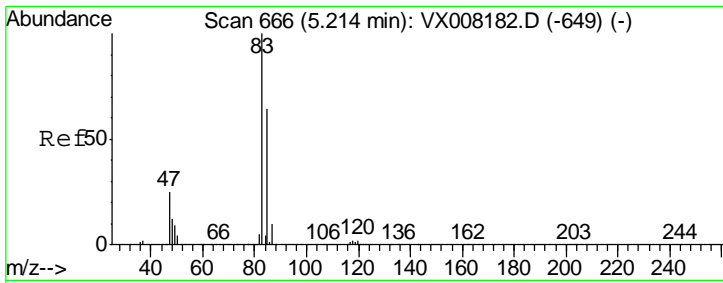
#29  
 Tetrahydrofuran  
 Concen: 5.789 ug/l  
 RT: 5.10 min Scan# 647  
 Delta R.T. -0.03 min  
 Lab File: VX008275.D  
 Acq: 21 Mar 2019 05:46

Tgt Ion: 42 Resp: 396

Ion	Ratio	Lower	Upper
42	100		
72	18.2	33.8	50.6#
71	35.1	31.5	47.3



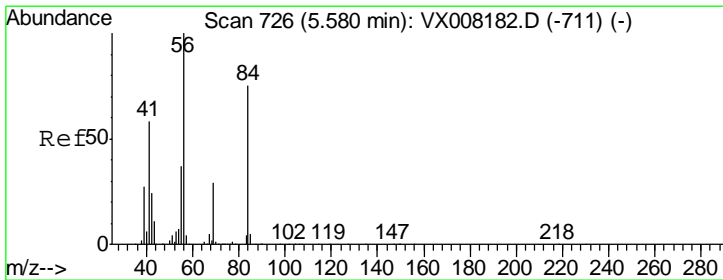
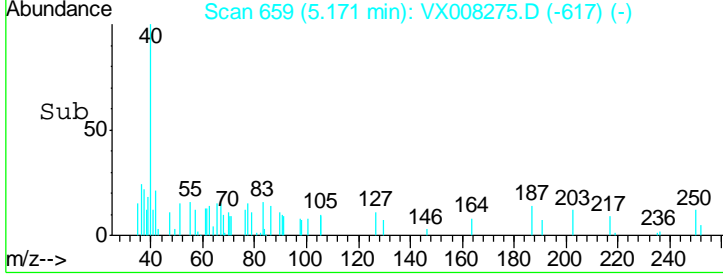
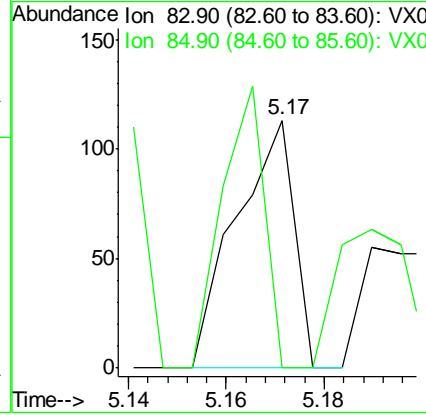
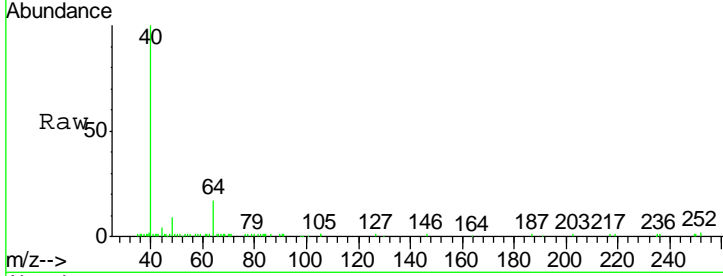




#30  
 Chloroform  
 Concen: 0.431 ug/l  
 RT: 5.17 min Scan# 659  
 Delta R.T. -0.04 min  
 Lab File: VX008275.D  
 Acq: 21 Mar 2019 05:46

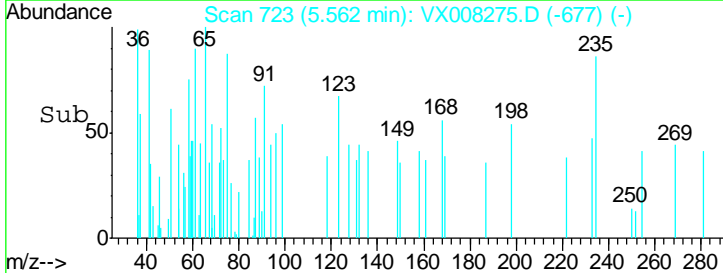
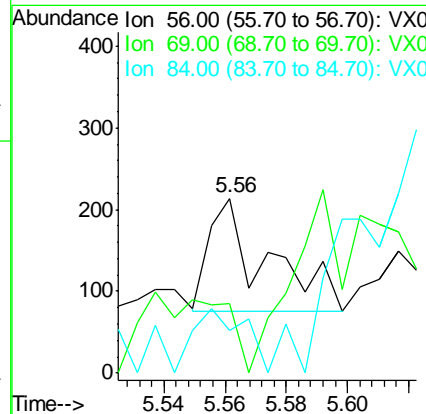
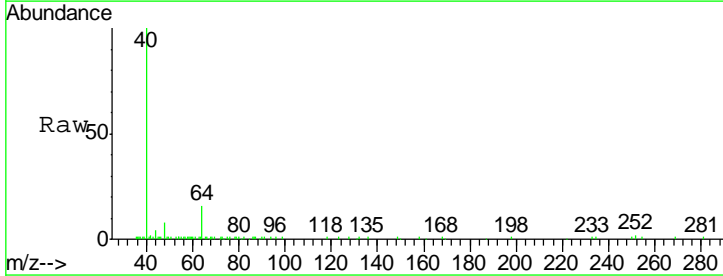
Instrument :  
 MSVOA\_X  
 ClientSampled :  
 M4-T4-OZ(POST-HYPO)

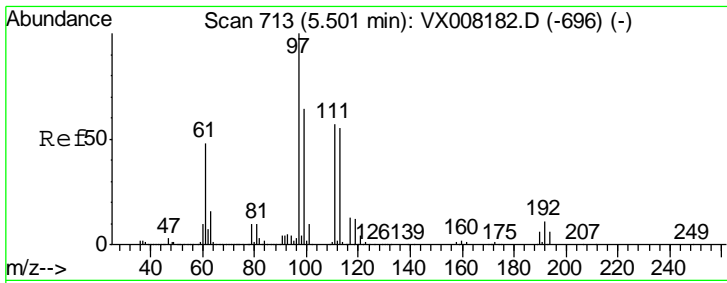
Tgt Ion	Resp	Lower	Upper
83	100		
85	0.0	51.8	77.6#



#31  
 Cyclohexane  
 Concen: 0.835 ug/l  
 RT: 5.56 min Scan# 723  
 Delta R.T. -0.02 min  
 Lab File: VX008275.D  
 Acq: 21 Mar 2019 05:46

Tgt Ion	Resp	Lower	Upper
56	100		
69	0.0	24.0	36.0#
84	0.0	65.3	97.9#

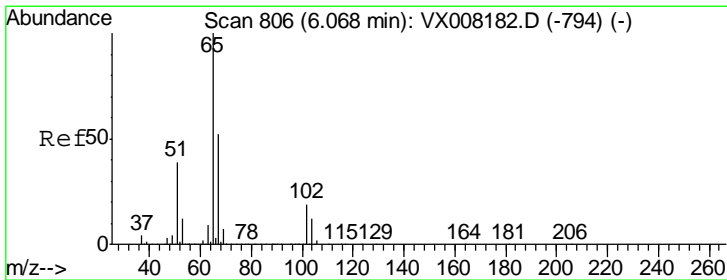
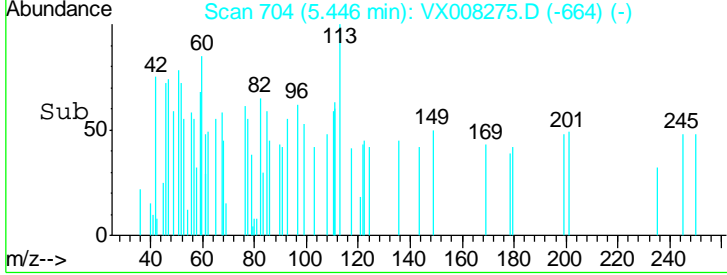
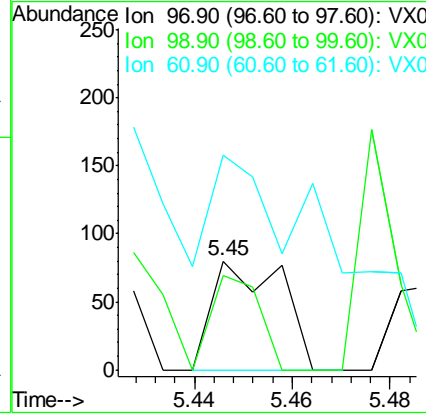
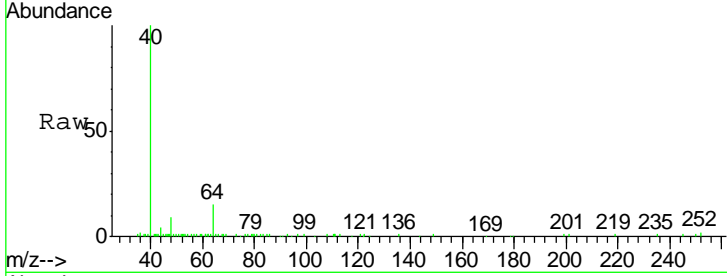




#32  
 1,1,1-Trichloroethane  
 Concen: 0.434 ug/l  
 RT: 5.45 min Scan# 704  
 Delta R.T. -0.05 min  
 Lab File: VX008275.D  
 Acq: 21 Mar 2019 05:46

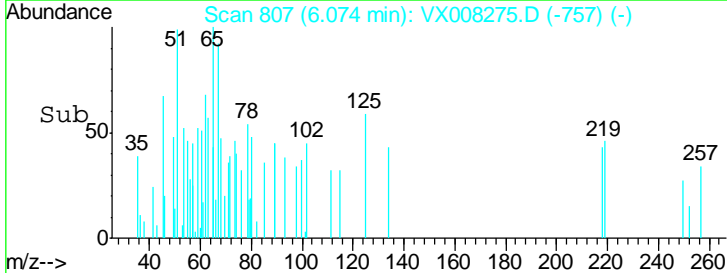
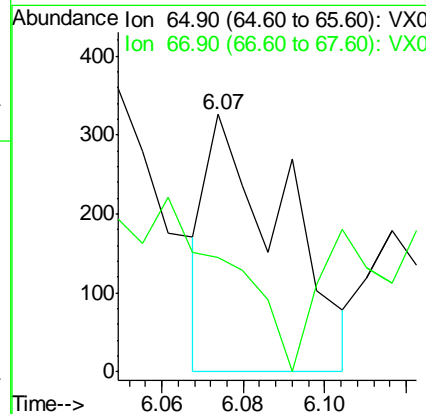
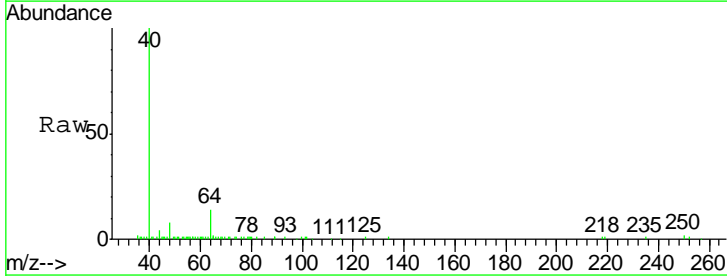
**Instrument :**  
 MSVOA\_X  
**ClientSampled :**  
 M4-T4-OZ(POST-HYPO)

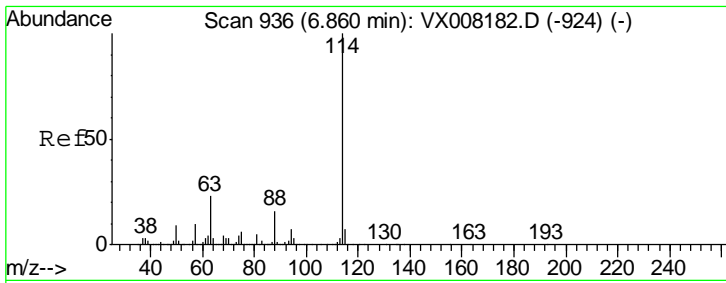
Tgt Ion	Resp	Lower	Upper
97	100		
99	0.0	52.2	78.2#
61	344.9	34.9	52.3#



#33  
 1,2-Dichloroethane-d4  
 Concen: 3.259 ug/l  
 RT: 6.07 min Scan# 807  
 Delta R.T. 0.01 min  
 Lab File: VX008275.D  
 Acq: 21 Mar 2019 05:46

Tgt Ion	Resp	Lower	Upper
65	100		
67	93.9	0.0	110.0

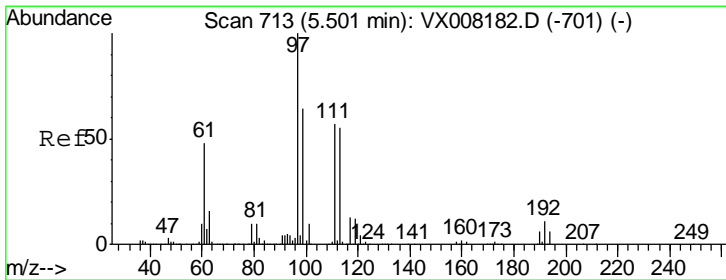
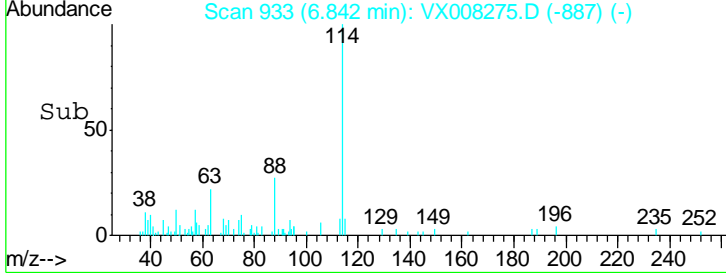
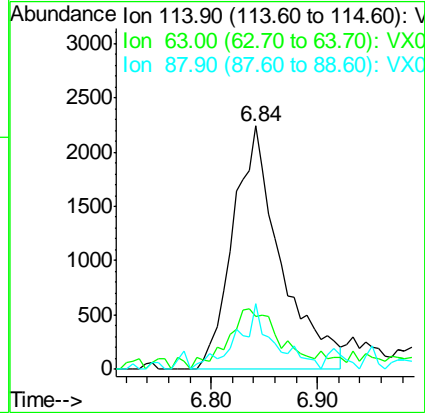
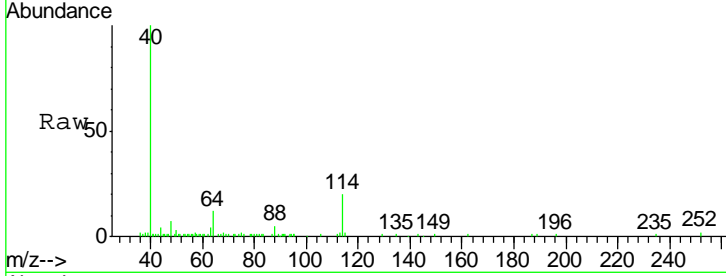




#34  
 1,4-Difluorobenzene  
 Concen: 50.000 ug/l  
 RT: 6.84 min Scan# 933  
 Delta R.T. -0.02 min  
 Lab File: VX008275.D  
 Acq: 21 Mar 2019 05:46

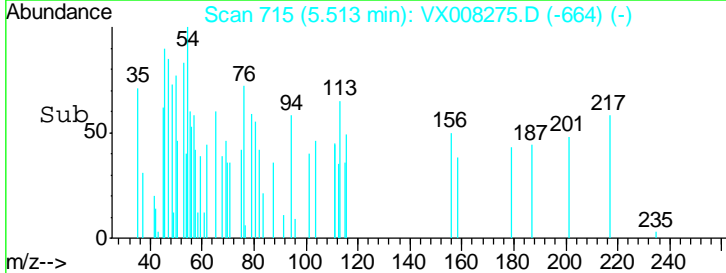
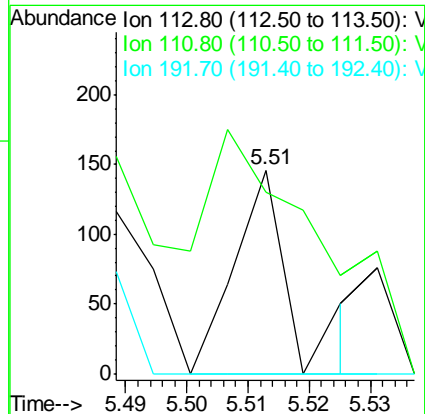
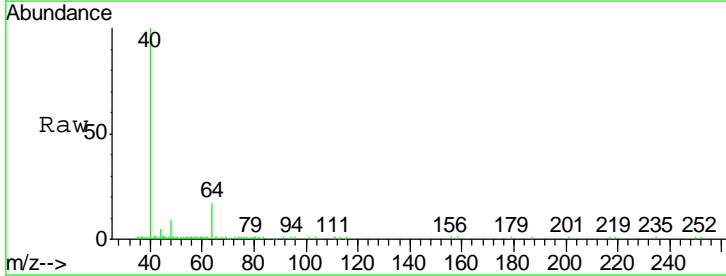
**Instrument :**  
 MSVOA\_X  
**ClientSampleId :**  
 M4-T4-OZ(POST-HYPO)

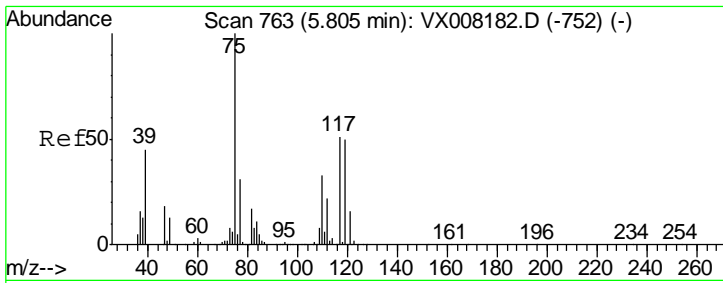
Tgt Ion	Resp	Lower	Upper
114	7010		
63	21.6	0.0	39.8
88	23.7	0.0	31.4



#35  
 Dibromofluoromethane  
 Concen: 2.024 ug/l  
 RT: 5.51 min Scan# 715  
 Delta R.T. 0.01 min  
 Lab File: VX008275.D  
 Acq: 21 Mar 2019 05:46

Tgt Ion	Resp	Lower	Upper
113	95		
111	223.2	81.4	122.0#
192	0.0	19.4	29.0#

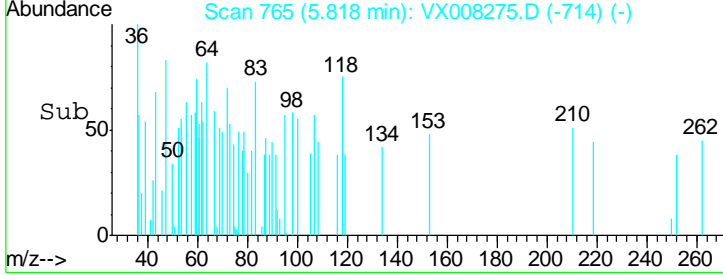
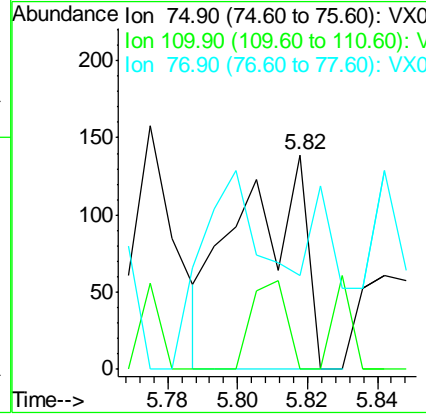
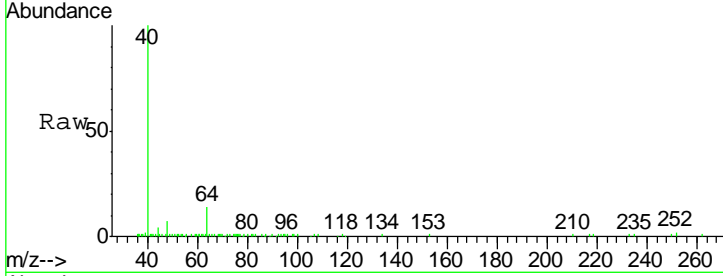




#36  
 1,1-Dichloropropene  
 Concen: 2.230 ug/l  
 RT: 5.82 min Scan# 765  
 Delta R.T. 0.01 min  
 Lab File: VX008275.D  
 Acq: 21 Mar 2019 05:46

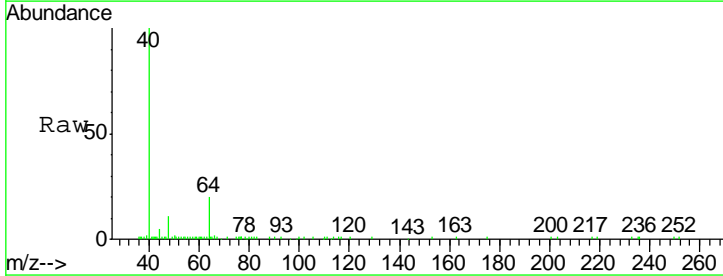
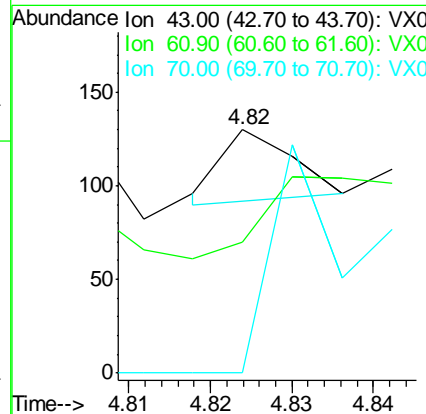
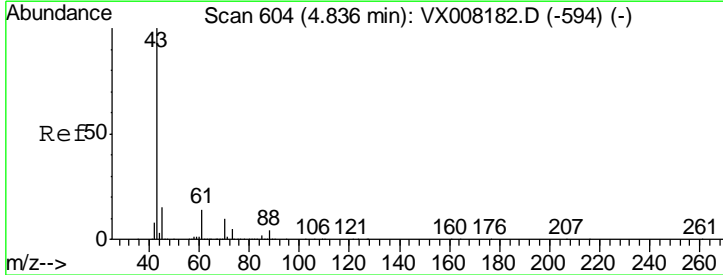
**Instrument :**  
 MSVOA\_X  
**ClientSampled :**  
 M4-T4-OZ(POST-HYPO)

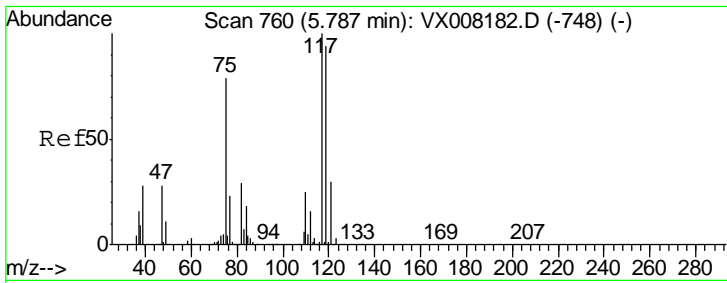
Tgt Ion	Resp	Lower	Upper
75	182		
110	21.4	18.4	55.0
77	101.1	25.0	37.4#



#37  
 Ethyl Acetate  
 Concen: 0.238 ug/l  
 RT: 4.82 min Scan# 602  
 Delta R.T. -0.01 min  
 Lab File: VX008275.D  
 Acq: 21 Mar 2019 05:46

Tgt Ion	Resp	Lower	Upper
43	23		
61	382.6	11.3	16.9#
70	273.9	8.5	12.7#

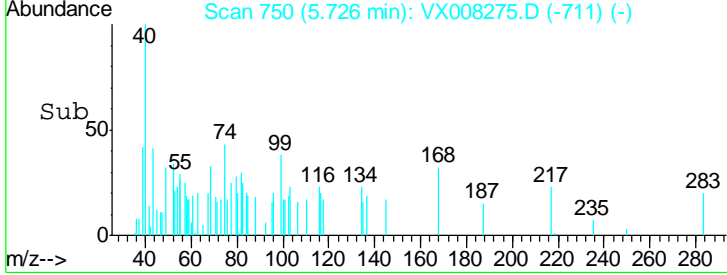
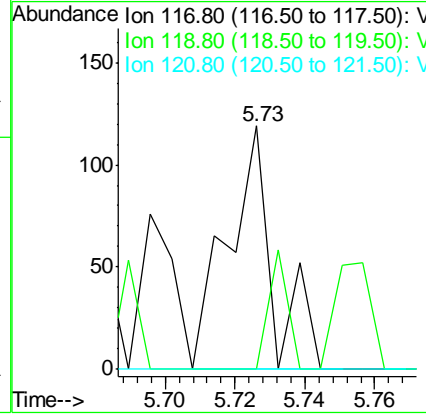
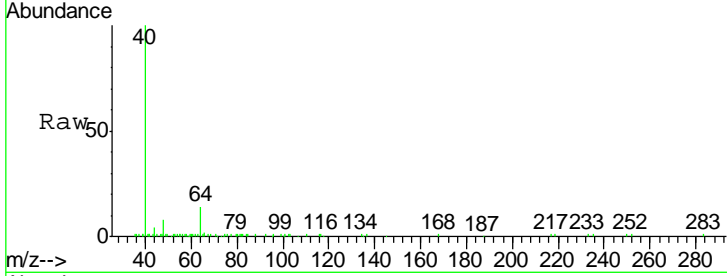




#38  
 Carbon Tetrachloride  
 Concen: 1.471 ug/l  
 RT: 5.73 min Scan# 750  
 Delta R.T. -0.06 min  
 Lab File: VX008275.D  
 Acq: 21 Mar 2019 05:46

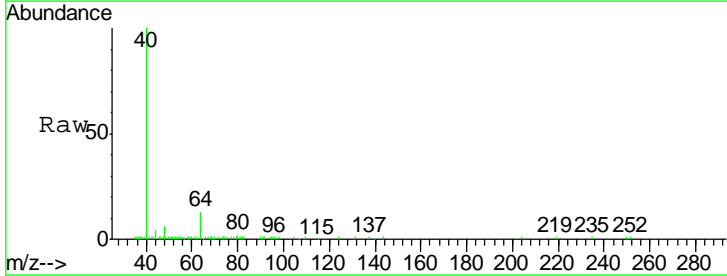
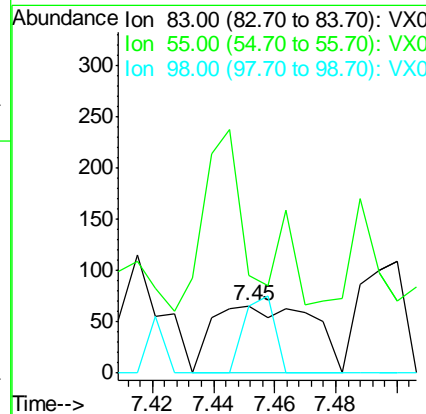
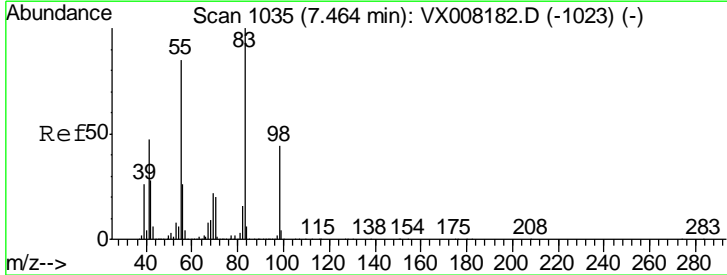
**Instrument :**  
 MSVOA\_X  
**ClientSampled :**  
 M4-T4-OZ(POST-HYPO)

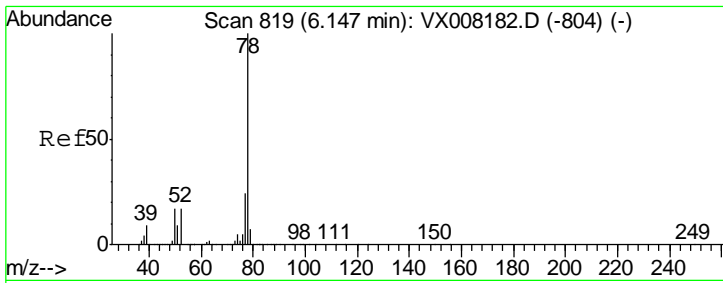
Tgt Ion	Resp	Lower	Upper
117	107		
119	0.0	76.2	114.2#
121	0.0	24.6	36.8#



#39  
 Methylcyclohexane  
 Concen: 1.527 ug/l  
 RT: 7.45 min Scan# 1033  
 Delta R.T. -0.01 min  
 Lab File: VX008275.D  
 Acq: 21 Mar 2019 05:46

Tgt Ion	Resp	Lower	Upper
83	150		
83	100		
55	33.3	60.4	90.6#
98	98.5	36.5	54.7#

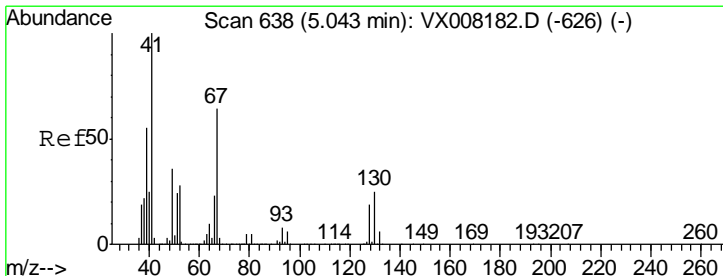
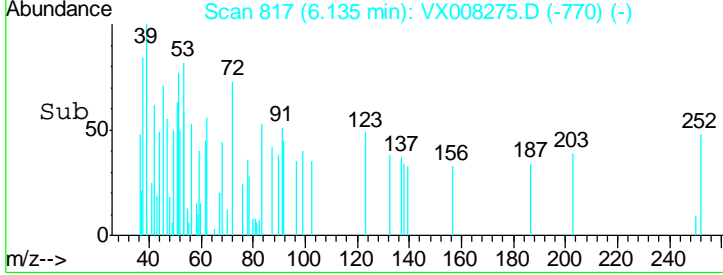
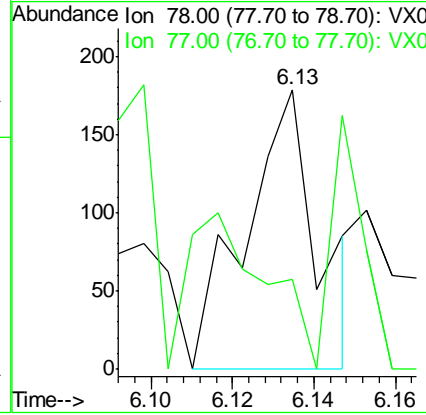
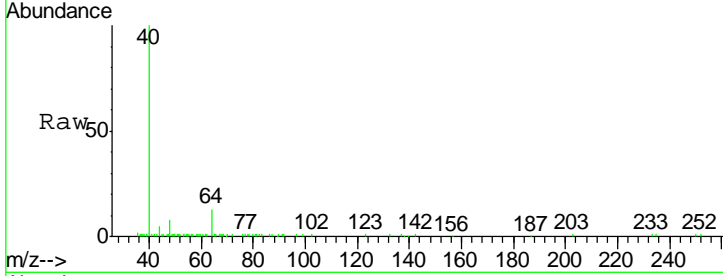




#40  
Benzene  
Concen: 0.911 ug/l  
RT: 6.13 min Scan# 817  
Delta R.T. -0.01 min  
Lab File: VX008275.D  
Acq: 21 Mar 2019 05:46

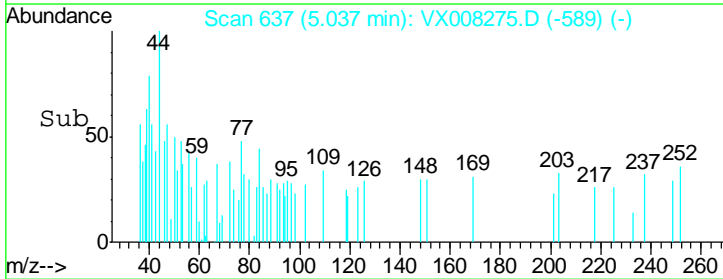
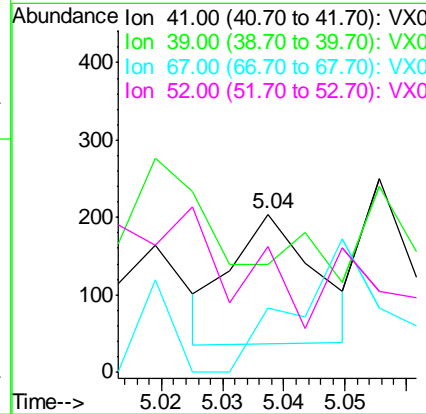
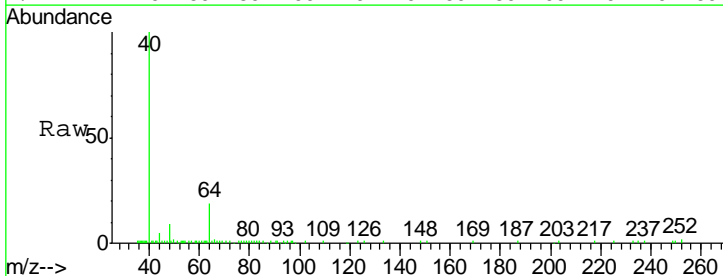
Instrument : MSVOA\_X  
ClientSampleId : M4-T4-OZ(POST-HYPO)

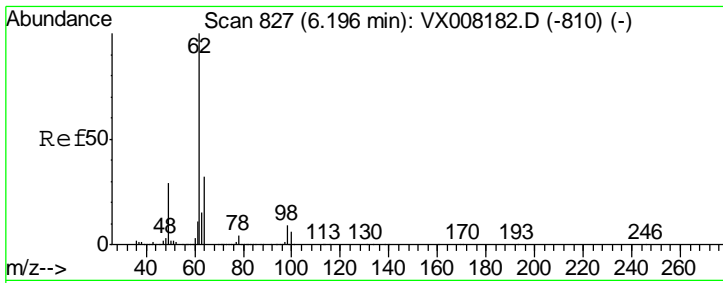
Tgt Ion	Resp	Lower	Upper
78	100		
77	0.0	19.0	28.4#



#41  
Methacrylonitrile  
Concen: 2.920 ug/l  
RT: 5.04 min Scan# 637  
Delta R.T. -0.01 min  
Lab File: VX008275.D  
Acq: 21 Mar 2019 05:46

Tgt Ion	Resp	Lower	Upper
41	100		
39	0.0	41.6	62.4#
67	139.2	55.8	83.6#
52	0.0	21.7	32.5#

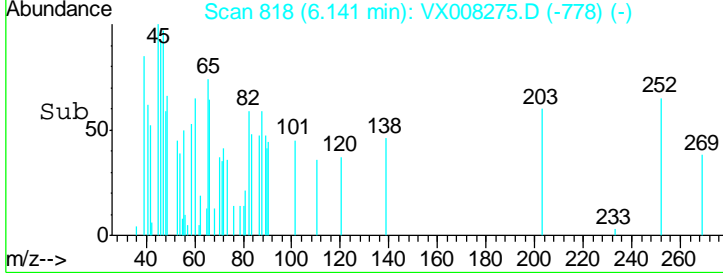
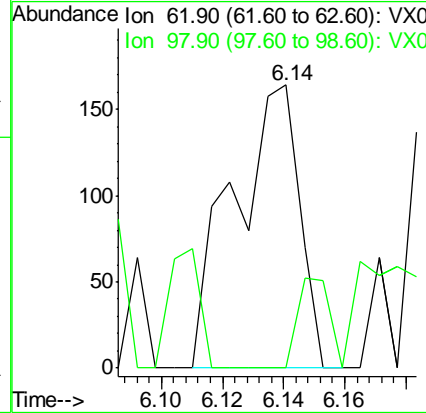
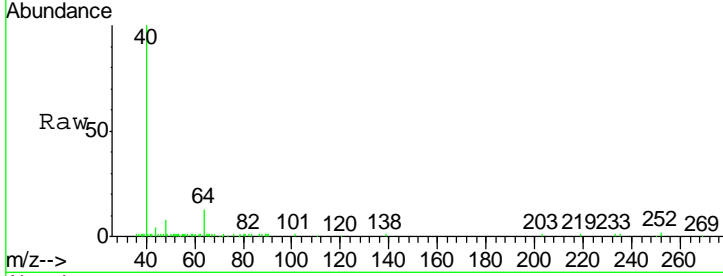




#42  
 1,2-Dichloroethane  
 Concen: 2.791 ug/l  
 RT: 6.14 min Scan# 818  
 Delta R.T. -0.05 min  
 Lab File: VX008275.D  
 Acq: 21 Mar 2019 05:46

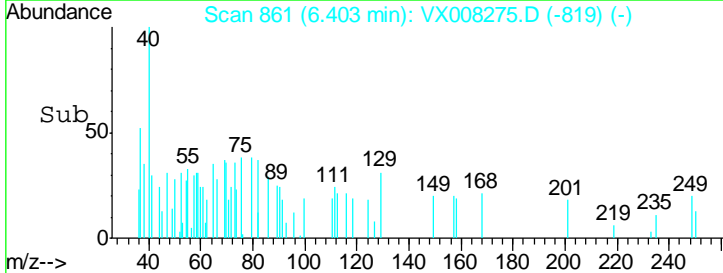
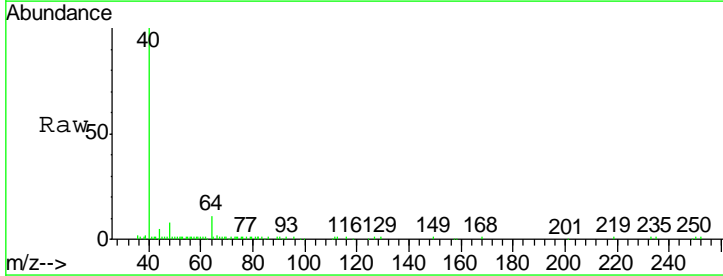
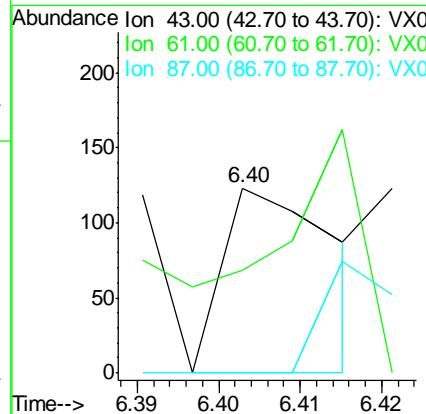
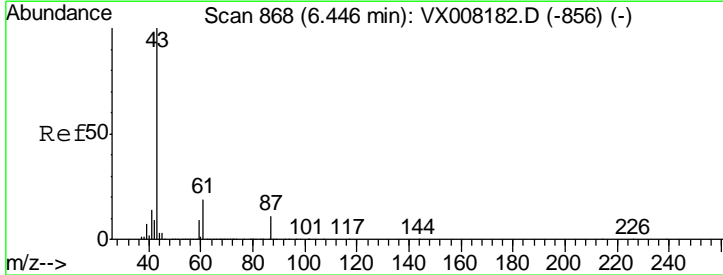
**Instrument :**  
 MSVOA\_X  
**ClientSampled :**  
 M4-T4-OZ(POST-HYPO)

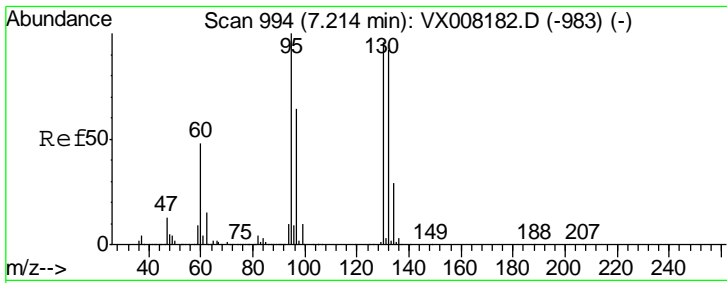
Tgt Ion	Resp	Lower	Upper
62	100	0.0	20.4
98	15.4	0.0	20.4



#43  
 Isopropyl Acetate  
 Concen: 0.750 ug/l  
 RT: 6.40 min Scan# 861  
 Delta R.T. -0.04 min  
 Lab File: VX008275.D  
 Acq: 21 Mar 2019 05:46

Tgt Ion	Resp	Lower	Upper
43	100	16.3	24.5#
61	100.0	10.5	15.7#
87	56.9	10.5	15.7#

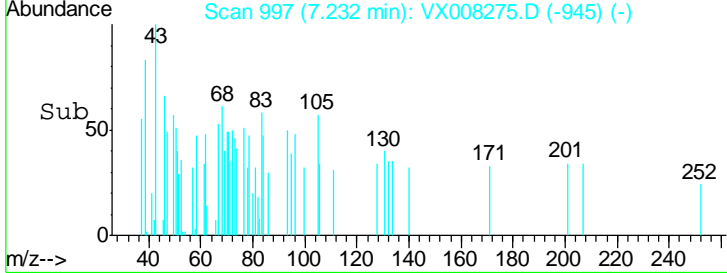
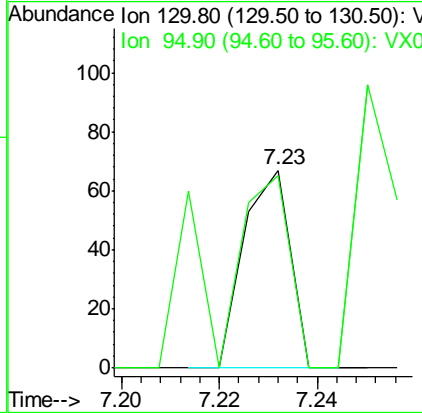
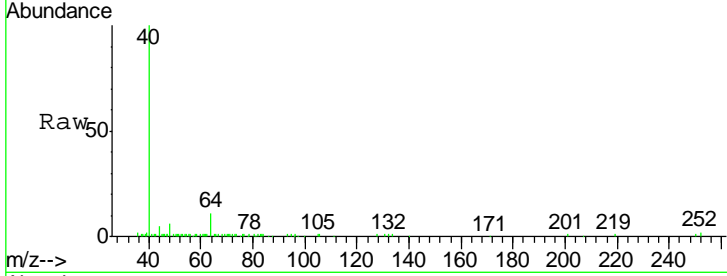




#44  
 Trichloroethene  
 Concen: 0.745 ug/l  
 RT: 7.23 min Scan# 997  
 Delta R.T. 0.02 min  
 Lab File: VX008275.D  
 Acq: 21 Mar 2019 05:46

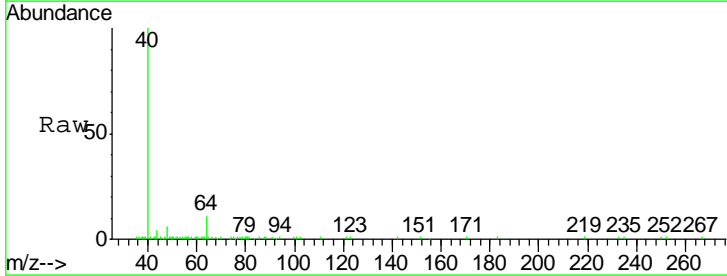
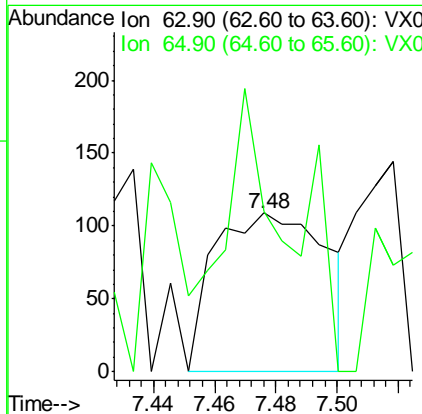
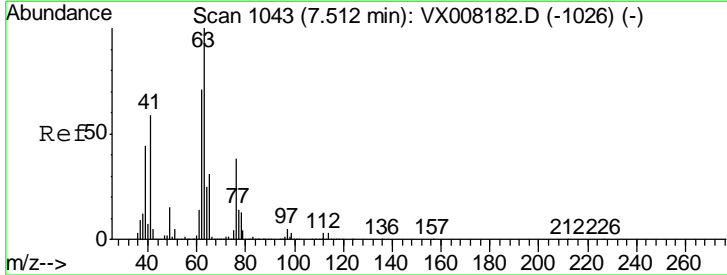
**Instrument :**  
 MSVOA\_X  
**ClientSampled :**  
 M4-T4-OZ(POST-HYPO)

Tgt Ion	Resp	Lower	Upper
130	100		
95	97.0	0.0	188.0

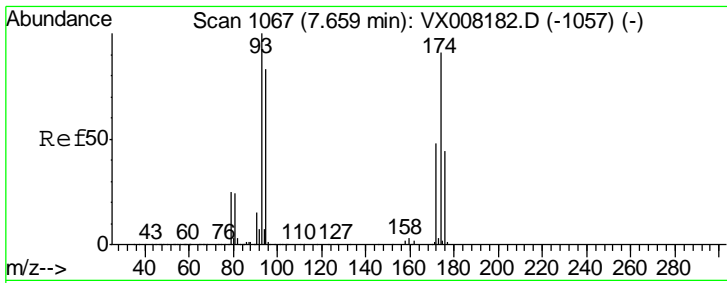


#45  
 1,2-Dichloropropane  
 Concen: 4.081 ug/l  
 RT: 7.48 min Scan# 1037  
 Delta R.T. -0.04 min  
 Lab File: VX008275.D  
 Acq: 21 Mar 2019 05:46

Tgt Ion	Resp	Lower	Upper
63	100		
65	100.9	24.7	37.1#



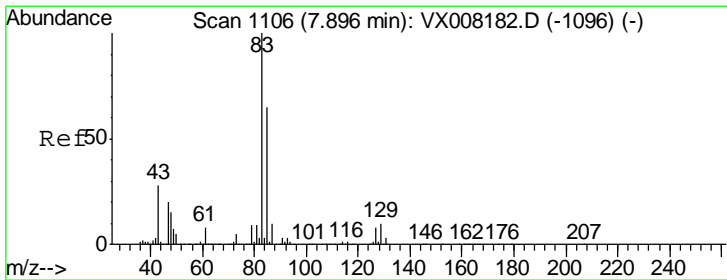
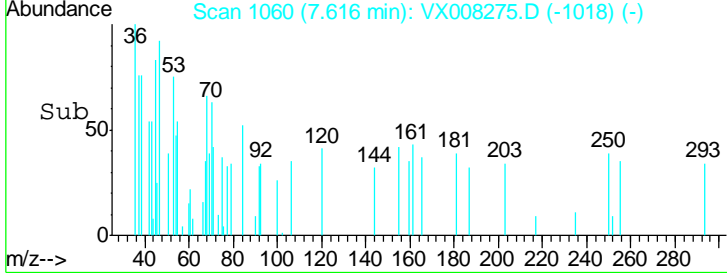
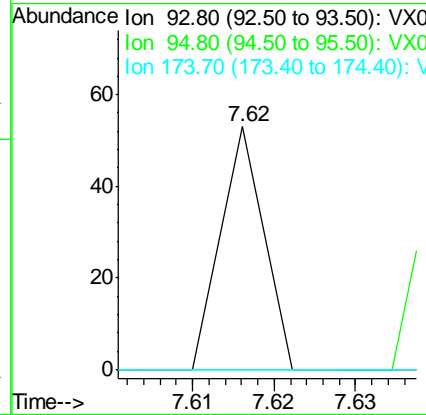
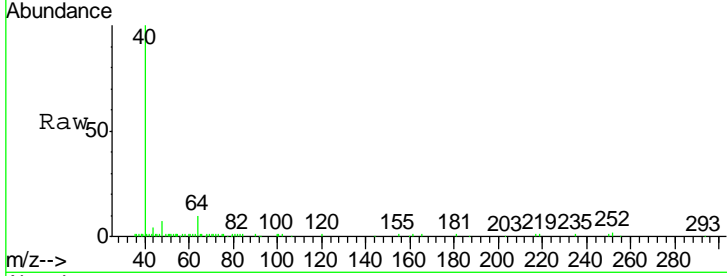




#46  
 Dibromomethane  
 Concen: 0.464 ug/l  
 RT: 7.62 min Scan# 1060  
 Delta R.T. -0.04 min  
 Lab File: VX008275.D  
 Acq: 21 Mar 2019 05:46

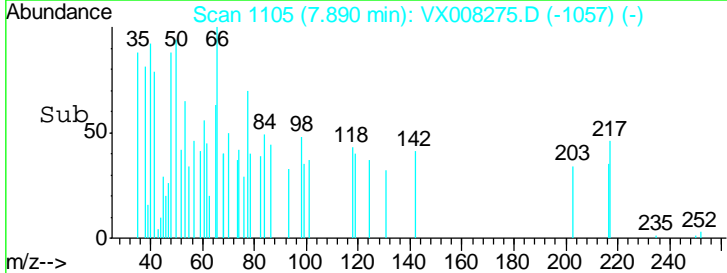
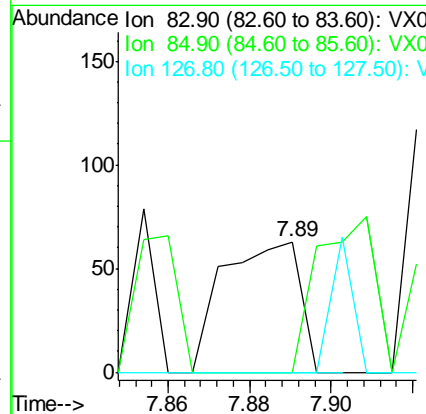
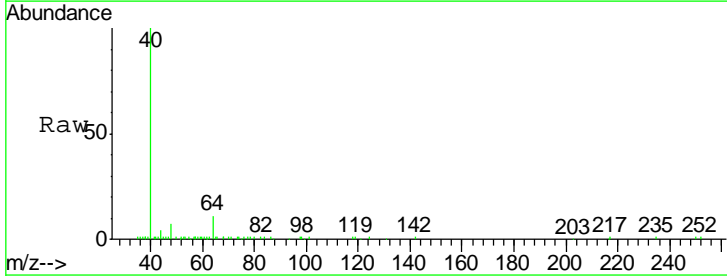
Instrument : MSVOA\_X  
 ClientSampled : M4-T4-OZ(POST-HYPO)

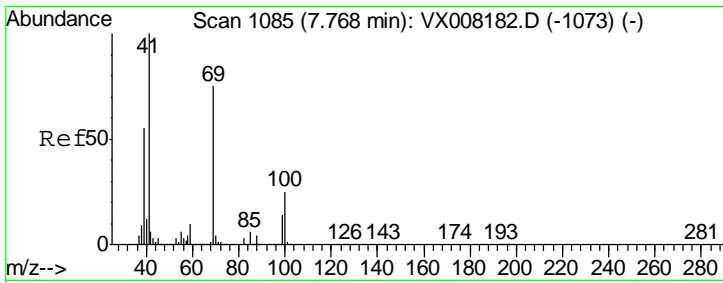
Tgt Ion	Resp	Lower	Upper
93	100		
95	0.0	66.8	100.2#
174	0.0	97.3	145.9#



#47  
 Bromodichloromethane  
 Concen: 1.064 ug/l  
 RT: 7.89 min Scan# 1105  
 Delta R.T. -0.01 min  
 Lab File: VX008275.D  
 Acq: 21 Mar 2019 05:46

Tgt Ion	Resp	Lower	Upper
83	100		
85	0.0	50.9	76.3#
127	0.0	7.4	11.0#

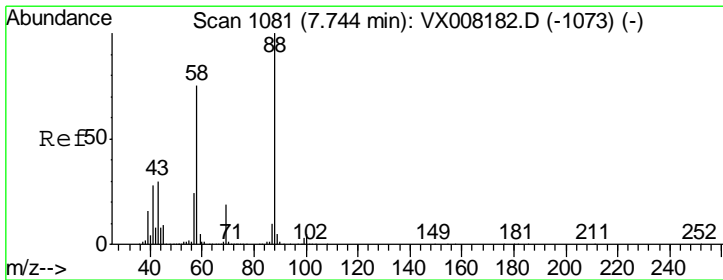
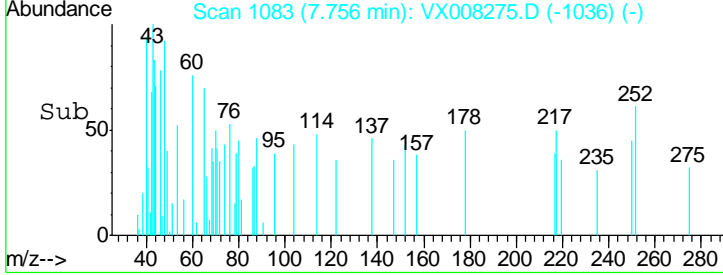
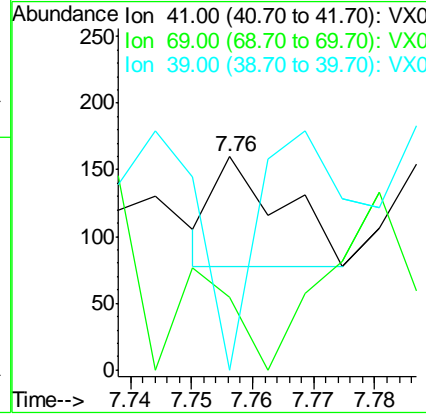
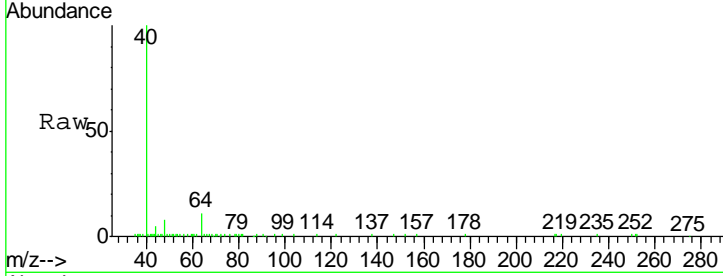




#48  
 Methyl methacrylate  
 Concen: 0.766 ug/l  
 RT: 7.76 min Scan# 1083  
 Delta R.T. -0.01 min  
 Lab File: VX008275.D  
 Acq: 21 Mar 2019 05:46

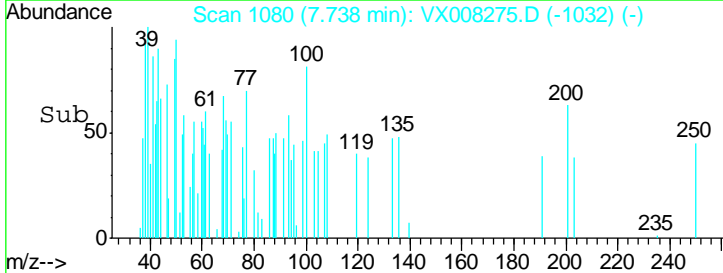
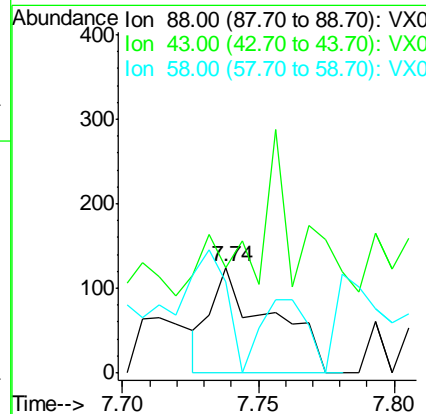
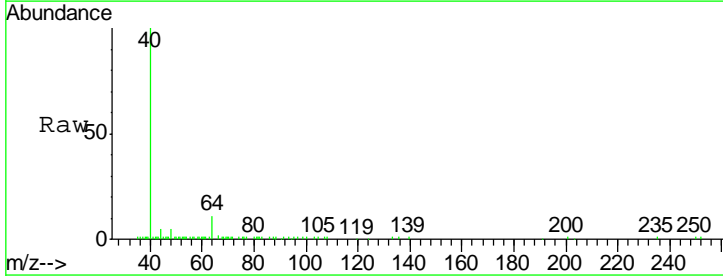
Instrument : MSVOA\_X  
 ClientSampleId : M4-T4-OZ(POST-HYPO)

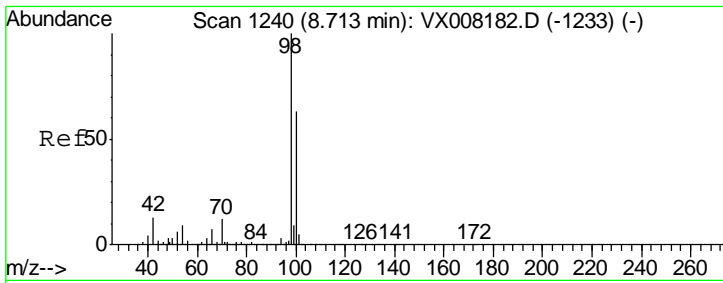
Tgt Ion	Resp	Lower	Upper
41	100		
69	211.1	65.2	97.8#
39	0.0	39.4	59.2#



#49  
 1,4-Dioxane  
 Concen: 130.255 ug/l  
 RT: 7.74 min Scan# 1080  
 Delta R.T. -0.01 min  
 Lab File: VX008275.D  
 Acq: 21 Mar 2019 05:46

Tgt Ion	Resp	Lower	Upper
88	100		
43	25.4	25.1	37.7
58	71.4	57.8	86.6

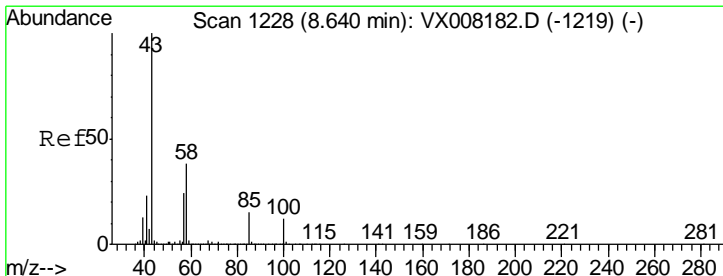
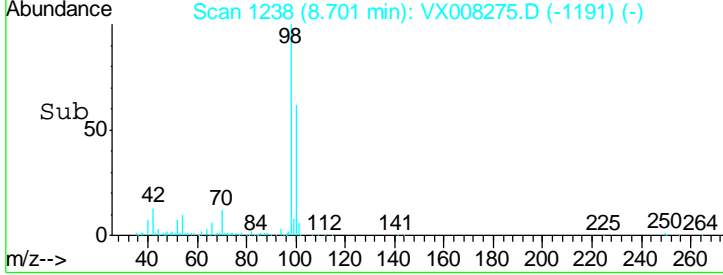
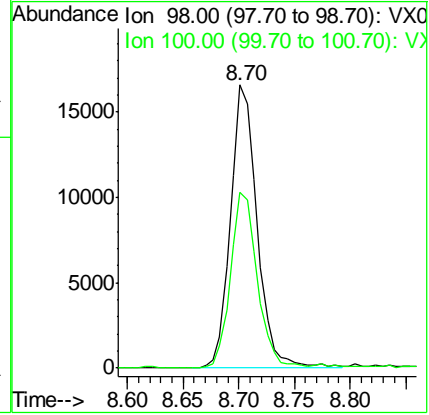
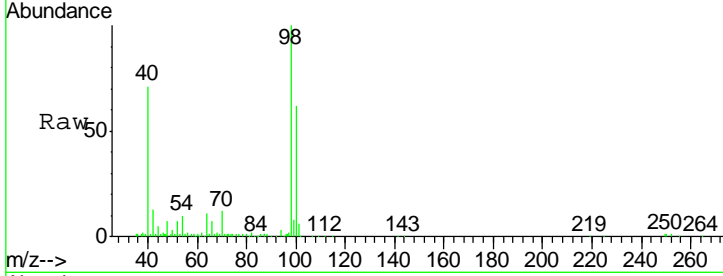




#50  
 Toluene-d8  
 Concen: 154.774 ug/l  
 RT: 8.70 min Scan# 1238  
 Delta R.T. -0.01 min  
 Lab File: VX008275.D  
 Acq: 21 Mar 2019 05:46

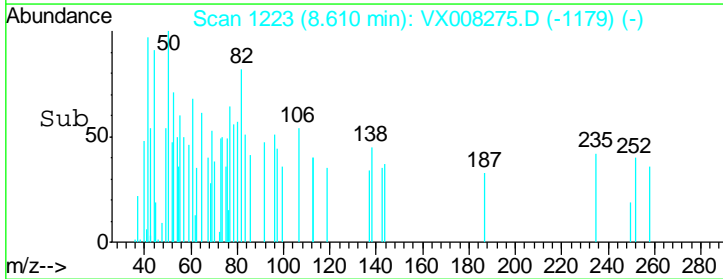
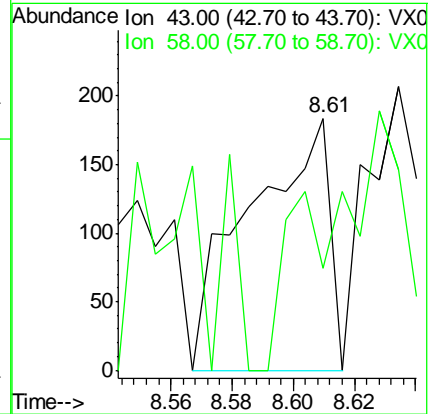
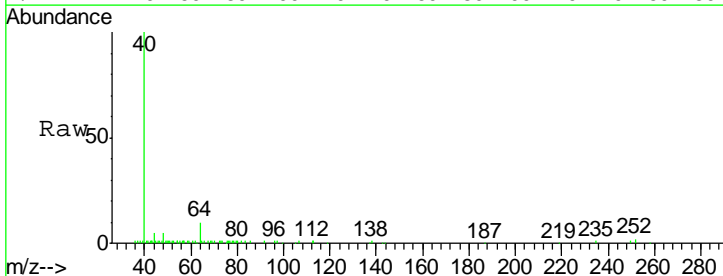
**Instrument :**  
 MSVOA\_X  
**ClientSampled :**  
 M4-T4-OZ(POST-HYPO)

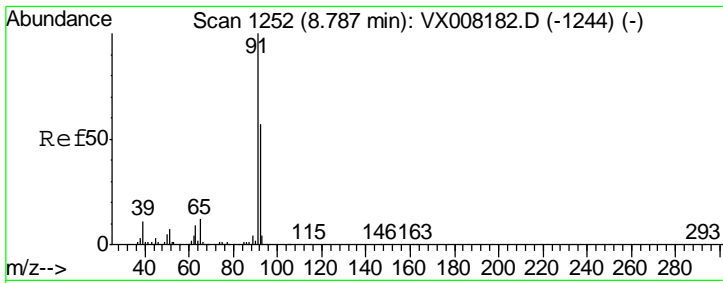
Tgt Ion: 98 Resp: 27537  
 Ion Ratio Lower Upper  
 98 100  
 100 62.3 51.7 77.5



#51  
 4-Methyl-2-Pentanone  
 Concen: 3.341 ug/l  
 RT: 8.61 min Scan# 1223  
 Delta R.T. -0.03 min  
 Lab File: VX008275.D  
 Acq: 21 Mar 2019 05:46

Tgt Ion: 43 Resp: 334  
 Ion Ratio Lower Upper  
 43 100  
 58 34.4 31.3 46.9

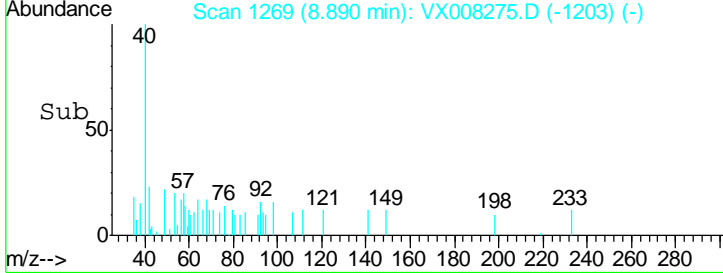
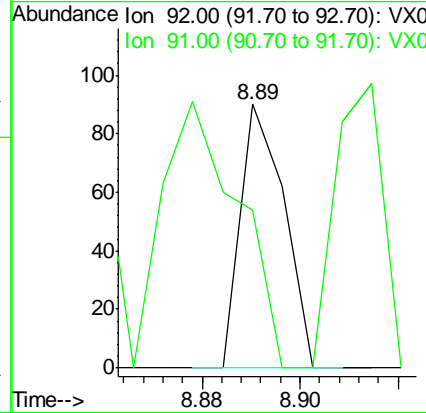
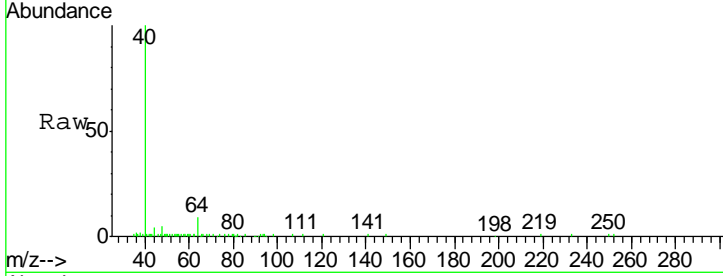




#52  
 Toluene  
 Concen: 0.391 ug/l  
 RT: 8.89 min Scan# 1269  
 Delta R.T. 0.10 min  
 Lab File: VX008275.D  
 Acq: 21 Mar 2019 05:46

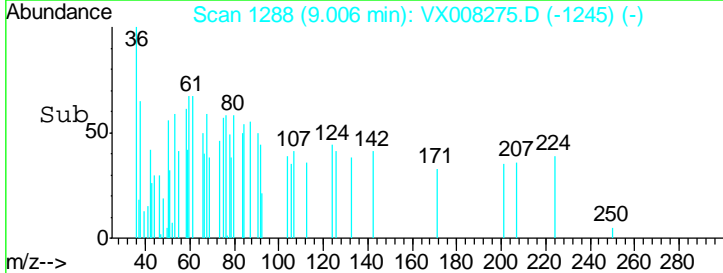
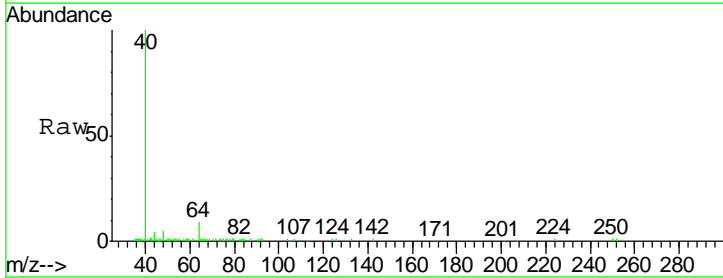
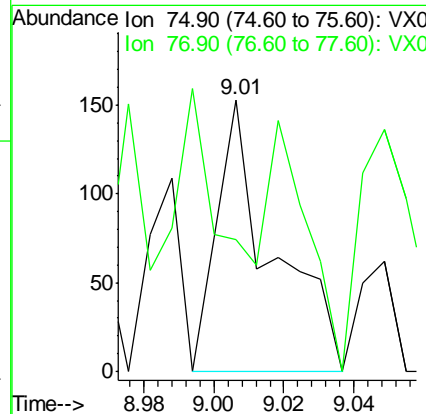
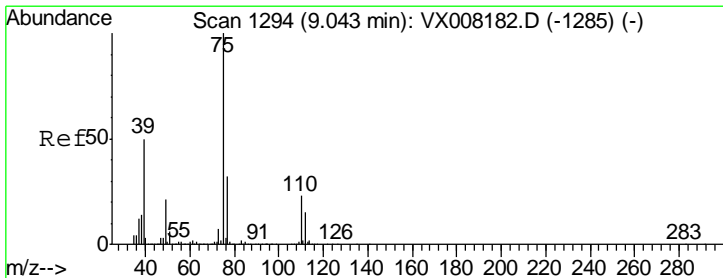
**Instrument :**  
 MSVOA\_X  
**ClientSampled :**  
 M4-T4-OZ(POST-HYPO)

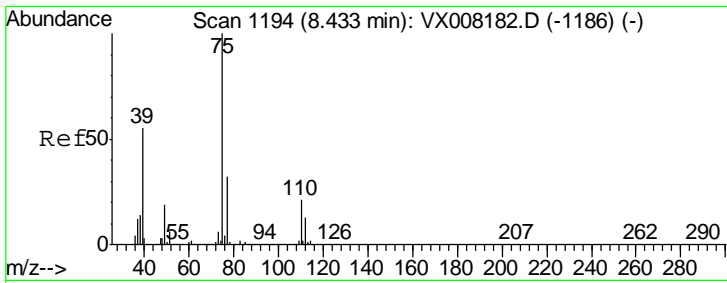
Tgt Ion	Resp	Lower	Upper
92	56		
92	100		
91	175.0	137.4	206.0



#53  
 t-1,3-Dichloropropene  
 Concen: 3.093 ug/l  
 RT: 9.01 min Scan# 1288  
 Delta R.T. -0.04 min  
 Lab File: VX008275.D  
 Acq: 21 Mar 2019 05:46

Tgt Ion	Resp	Lower	Upper
75	168		
75	100		
77	48.4	25.4	38.0#

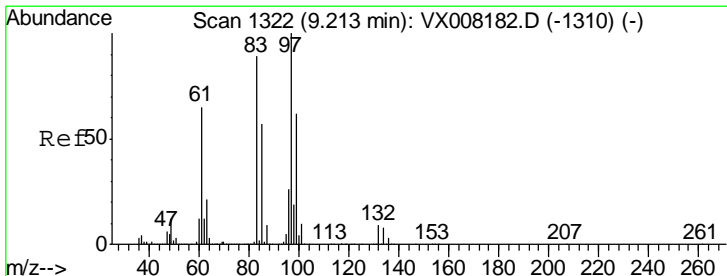
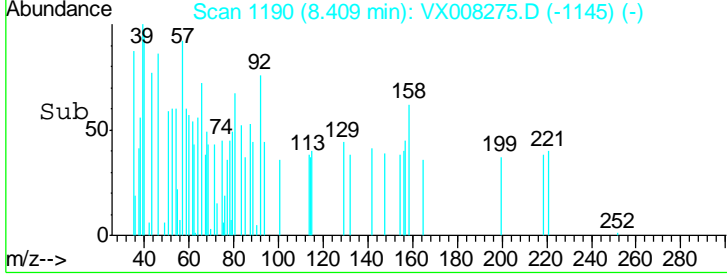
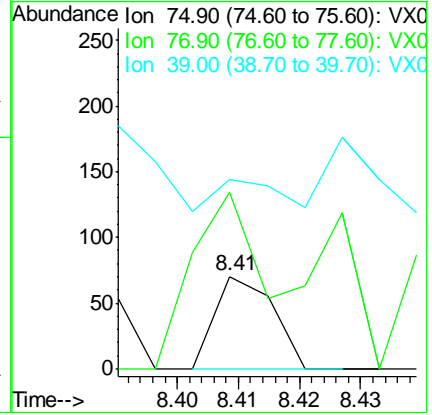
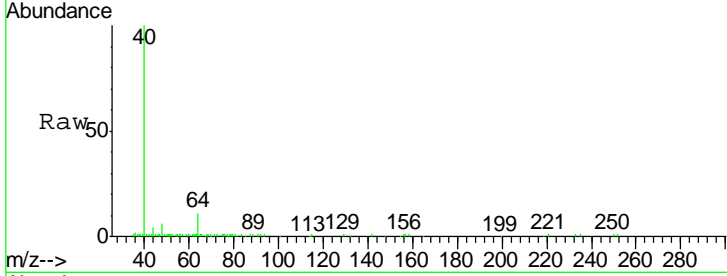




#54  
 cis-1,3-Dichloropropene  
 Concen: 0.475 ug/l  
 RT: 8.41 min Scan# 1190  
 Delta R.T. -0.02 min  
 Lab File: VX008275.D  
 Acq: 21 Mar 2019 05:46

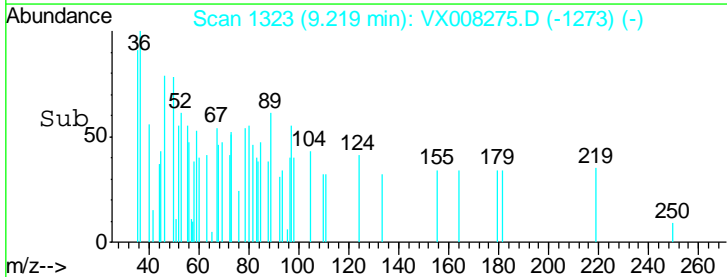
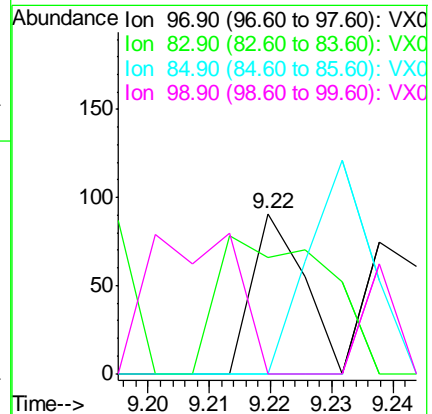
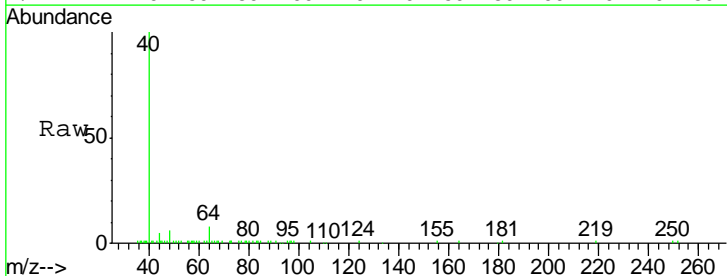
**Instrument :**  
 MSVOA\_X  
**ClientSampled :**  
 M4-T4-OZ(POST-HYPO)

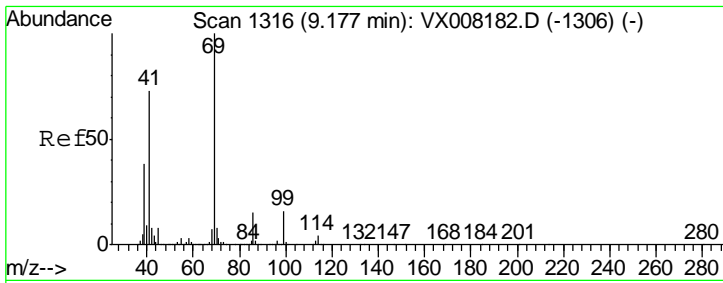
Tgt Ion	Resp	Lower	Upper
75	100		
77	64.3	25.0	37.6#
39	34.3	36.6	54.8#



#55  
 1,1,2-Trichloroethane  
 Concen: 0.915 ug/l  
 RT: 9.22 min Scan# 1323  
 Delta R.T. 0.01 min  
 Lab File: VX008275.D  
 Acq: 21 Mar 2019 05:46

Tgt Ion	Resp	Lower	Upper
97	100		
83	141.8	69.1	103.7#
85	0.0	44.3	66.5#
99	0.0	49.8	74.8#

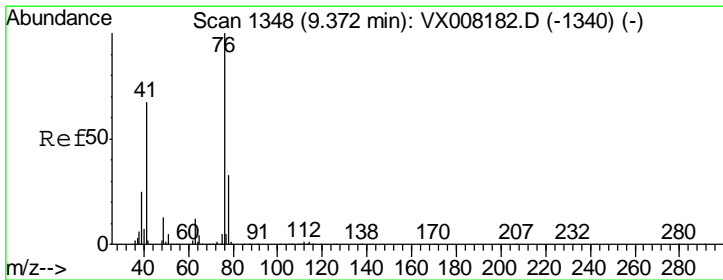
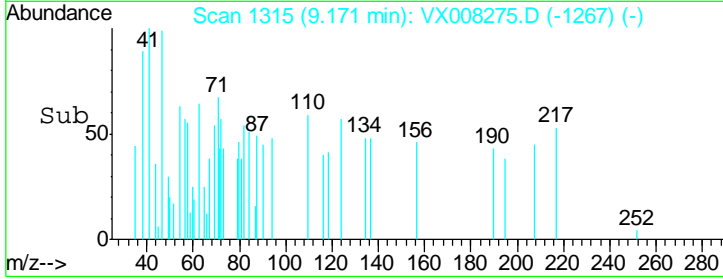
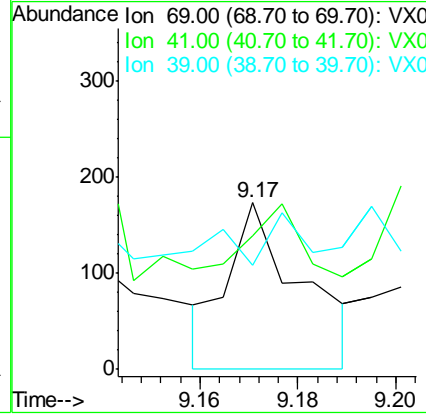
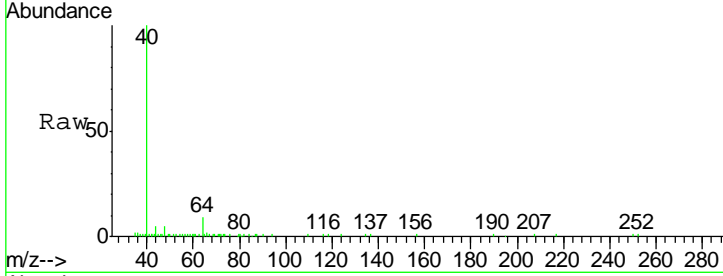




#56  
 Ethyl methacrylate  
 Concen: 2.289 ug/l  
 RT: 9.17 min Scan# 1315  
 Delta R.T. -0.01 min  
 Lab File: VX008275.D  
 Acq: 21 Mar 2019 05:46

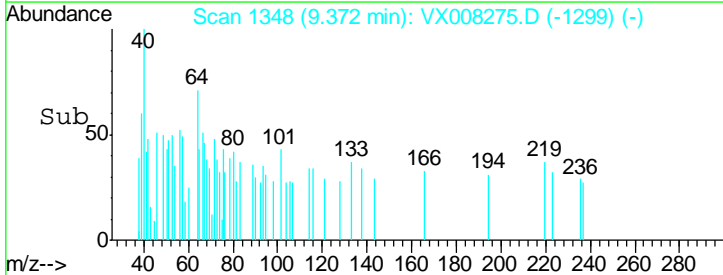
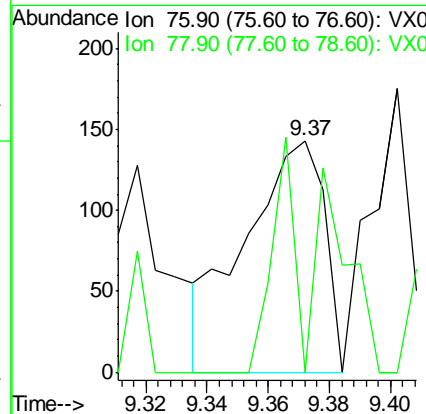
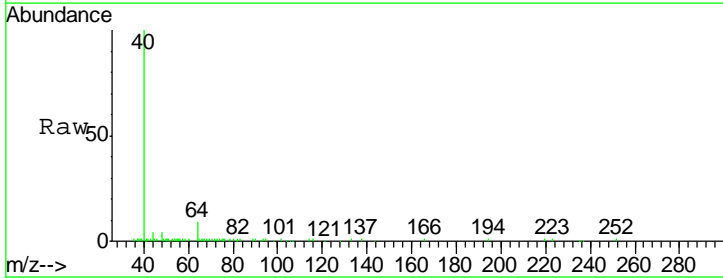
Instrument :  
 MSVOA\_X  
 ClientSampled :  
 M4-T4-OZ(POST-HYPO)

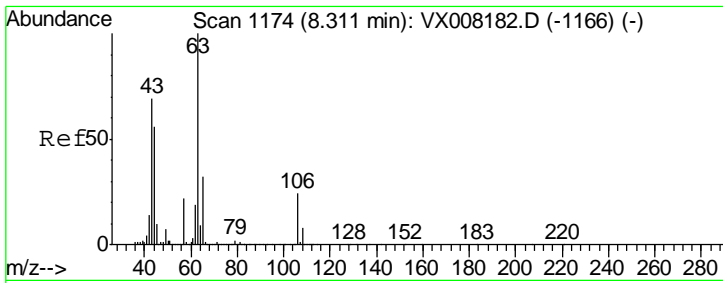
Tgt Ion	Resp	Lower	Upper
69	181		
41	43.6	54.2	81.4#
39	0.0	25.0	37.4#



#57  
 1,3-Dichloropropane  
 Concen: 2.509 ug/l  
 RT: 9.37 min Scan# 1348  
 Delta R.T. 0.00 min  
 Lab File: VX008275.D  
 Acq: 21 Mar 2019 05:46

Tgt Ion	Resp	Lower	Upper
76	257		
76	100		
78	37.0	25.5	38.3

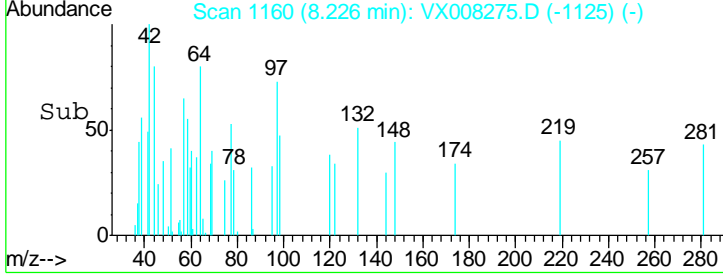
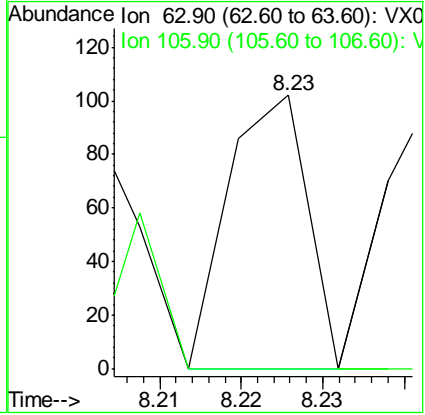
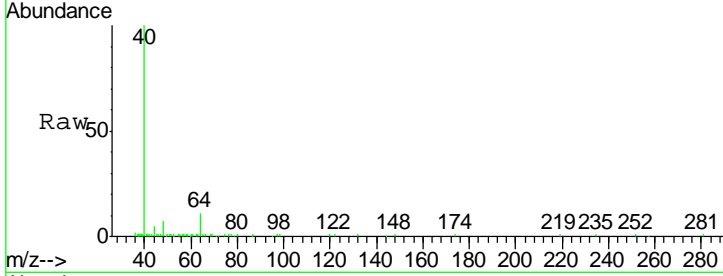




#58  
 2-Chloroethyl Vinyl ether  
 Concen: 1.454 ug/l  
 RT: 8.23 min Scan# 1160  
 Delta R.T. -0.09 min  
 Lab File: VX008275.D  
 Acq: 21 Mar 2019 05:46

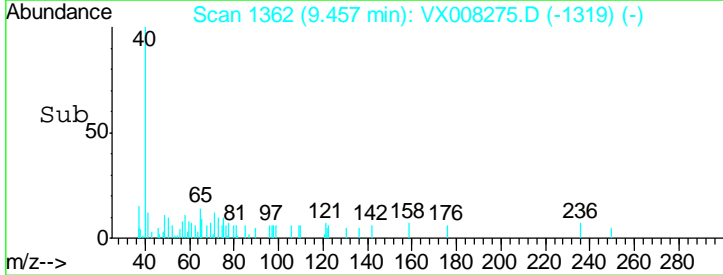
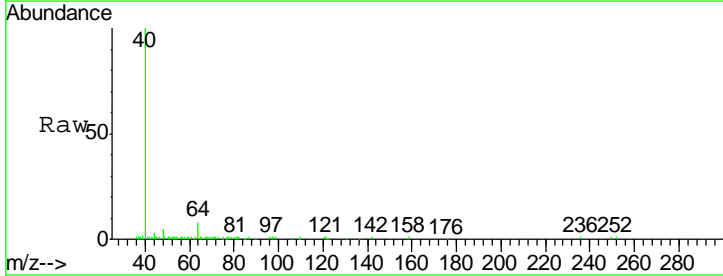
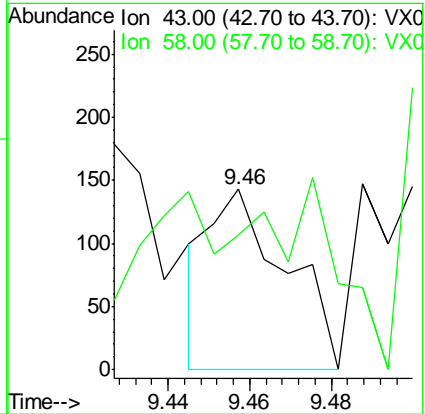
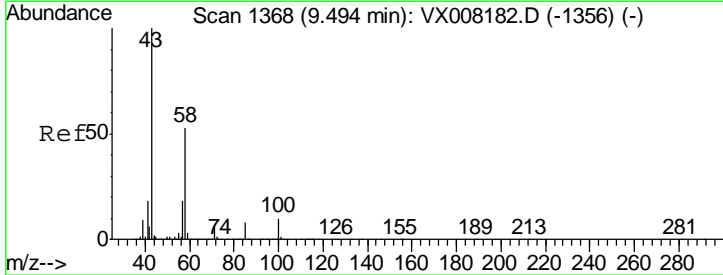
**Instrument :**  
 MSVOA\_X  
**ClientSampled :**  
 M4-T4-OZ(POST-HYPO)

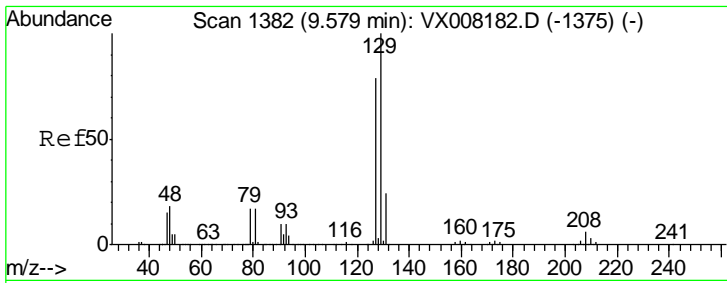
Tgt Ion	Resp	Lower	Upper
63	100		
106	30.4	22.2	33.2



#59  
 2-Hexanone  
 Concen: 2.404 ug/l  
 RT: 9.46 min Scan# 1362  
 Delta R.T. -0.04 min  
 Lab File: VX008275.D  
 Acq: 21 Mar 2019 05:46

Tgt Ion	Resp	Lower	Upper
43	100		
58	56.2	27.6	82.7

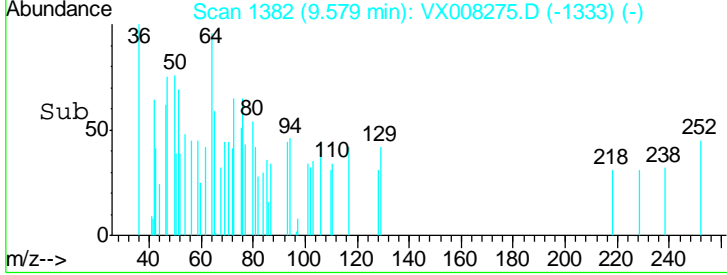
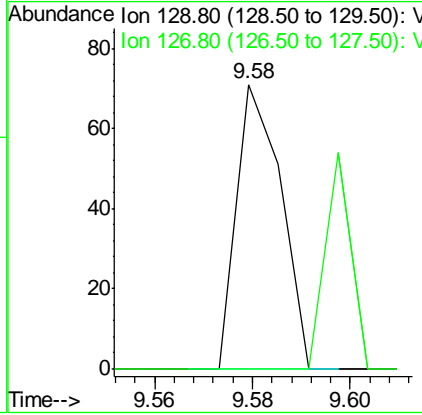
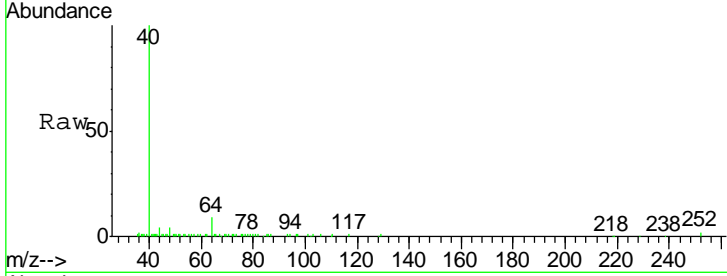




#60  
 Dibromochloromethane  
 Concen: 0.809 ug/l  
 RT: 9.58 min Scan# 1382  
 Delta R.T. 0.00 min  
 Lab File: VX008275.D  
 Acq: 21 Mar 2019 05:46

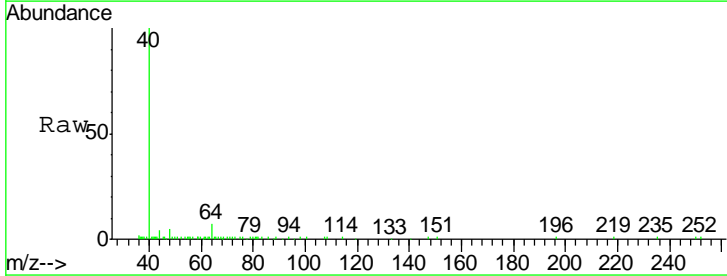
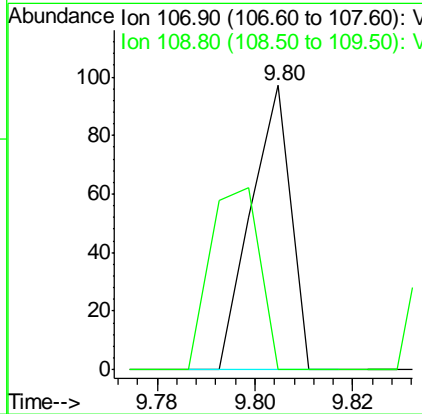
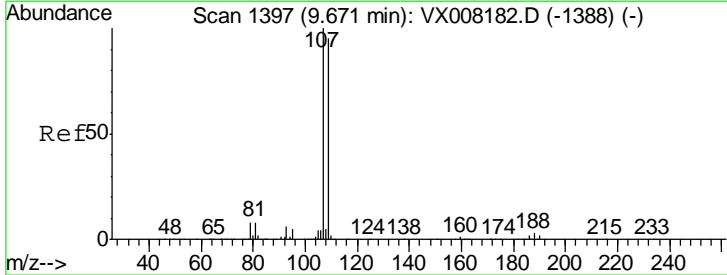
**Instrument :**  
 MSVOA\_X  
**ClientSampled :**  
 M4-T4-OZ(POST-HYPO)

Tgt Ion:	129	Resp:	45
Ion Ratio	Lower	Upper	
129	100		
127	44.4	38.3	114.8

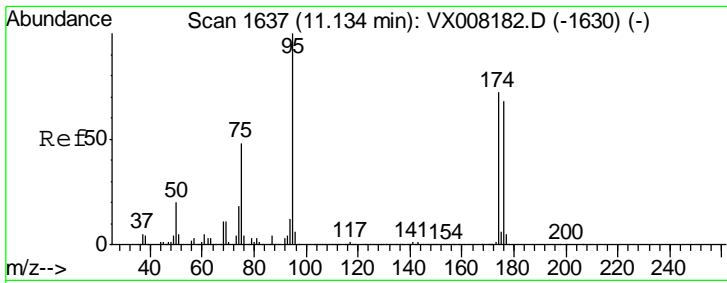


#61  
 1,2-Dibromoethane  
 Concen: 0.910 ug/l  
 RT: 9.80 min Scan# 1419  
 Delta R.T. 0.13 min  
 Lab File: VX008275.D  
 Acq: 21 Mar 2019 05:46

Tgt Ion:	107	Resp:	55
Ion Ratio	Lower	Upper	
107	100		
109	80.0	75.8	113.8



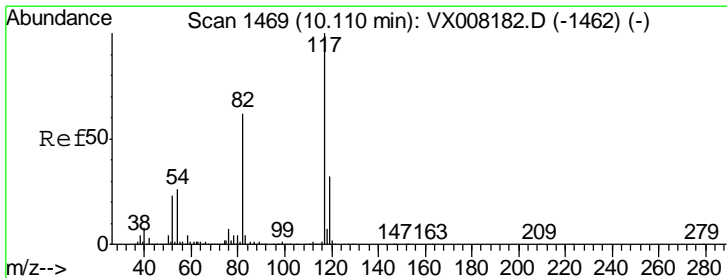
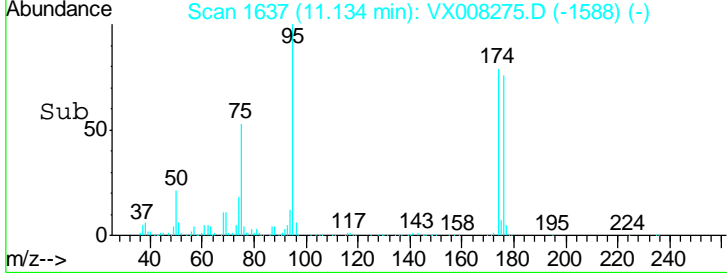
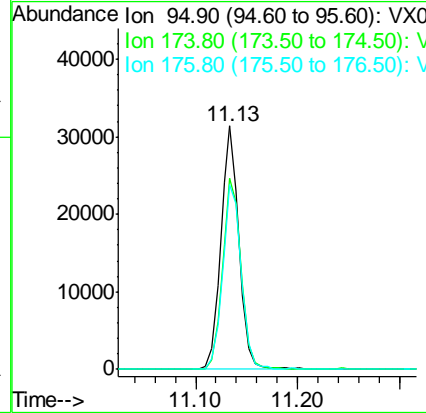
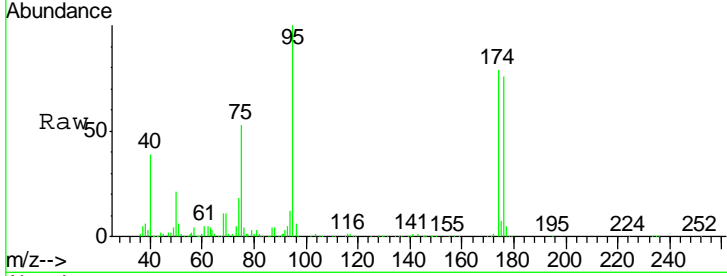




#62  
 4-Bromofluorobenzene  
 Concen: 641.880 ug/l  
 RT: 11.13 min Scan# 1637  
 Delta R.T. 0.00 min  
 Lab File: VX008275.D  
 Acq: 21 Mar 2019 05:46

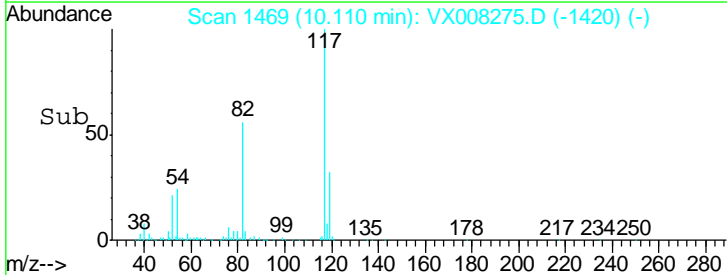
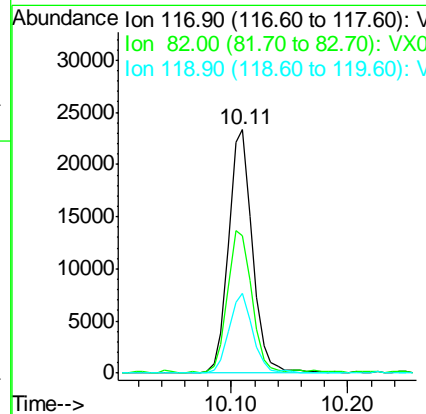
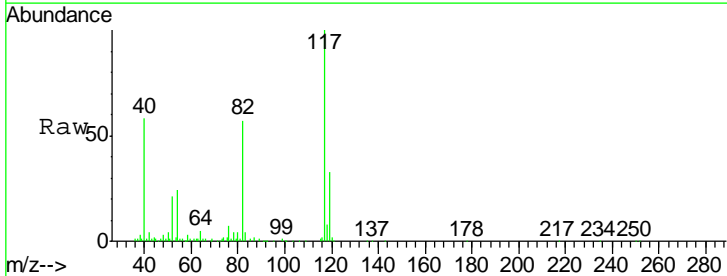
Instrument : MSVOA\_X  
 ClientSampleId : M4-T4-OZ(POST-HYPO)

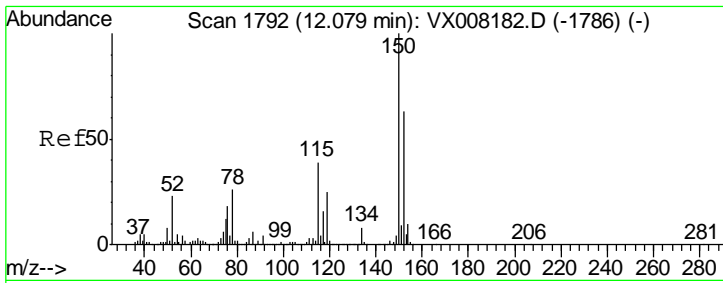
Tgt Ion	Resp	Lower	Upper
95	100		
174	80.4	0.0	182.8
176	77.3	0.0	178.0



#63  
 Chlorobenzene-d5  
 Concen: 50.000 ug/l  
 RT: 10.11 min Scan# 1469  
 Delta R.T. 0.00 min  
 Lab File: VX008275.D  
 Acq: 21 Mar 2019 05:46

Tgt Ion	Resp	Lower	Upper
117	100		
82	56.1	44.3	66.5
119	32.6	25.3	37.9

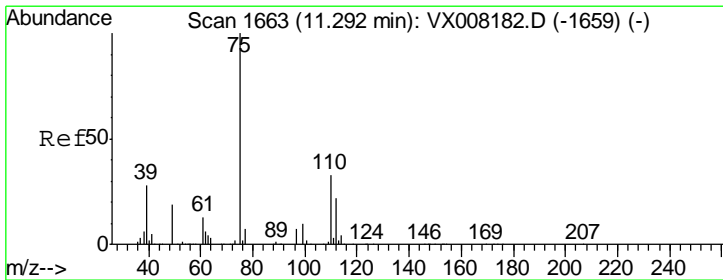
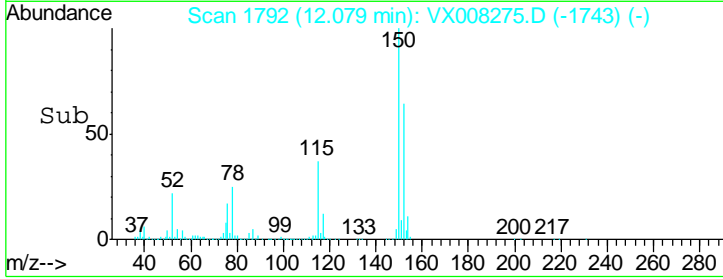
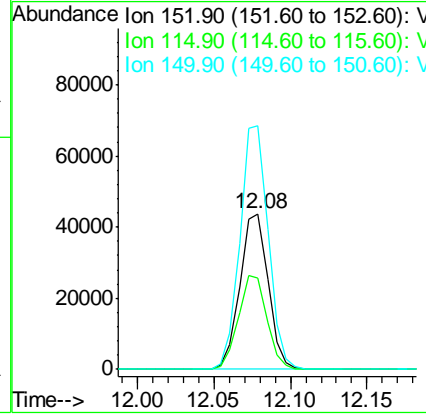
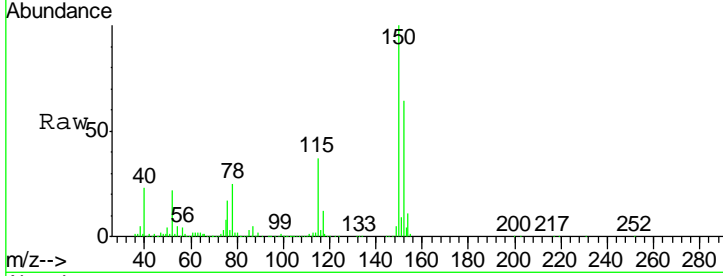




#72  
 1,4-Dichlorobenzene-d4  
 Concen: 50.000 ug/l  
 RT: 12.08 min Scan# 1792  
 Delta R.T. 0.00 min  
 Lab File: VX008275.D  
 Acq: 21 Mar 2019 05:46

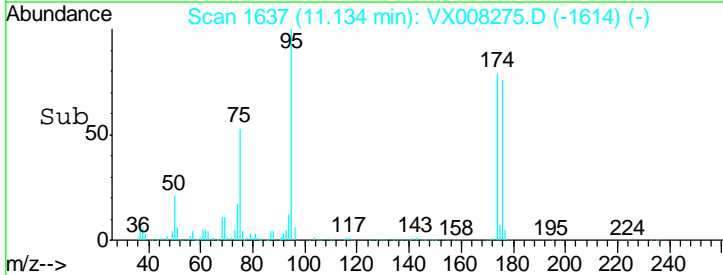
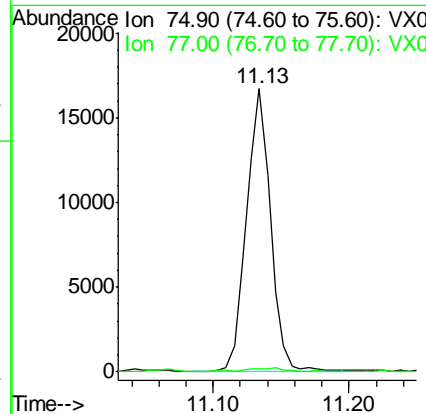
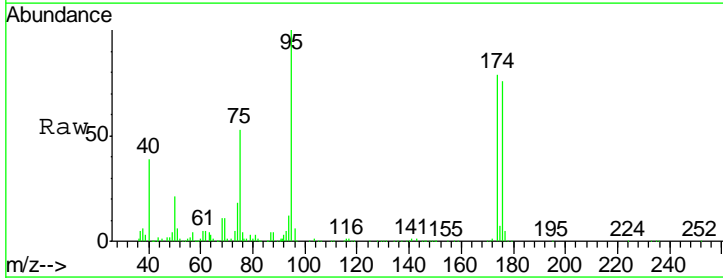
Instrument : MSVOA\_X  
 ClientSampled : M4-T4-OZ(POST-HYPO)

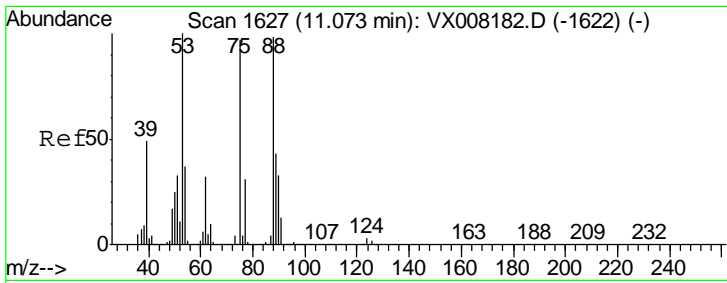
Tgt Ion	Resp	Lower	Upper
152	100		
115	60.7	38.6	115.7
150	157.1	0.0	348.4



#76  
 1,2,3-Trichloropropane  
 Concen: 13.170 ug/l  
 RT: 11.13 min Scan# 1637  
 Delta R.T. -0.16 min  
 Lab File: VX008275.D  
 Acq: 21 Mar 2019 05:46

Tgt Ion	Resp	Lower	Upper
75	100		
77	2.3	18.9	56.7#

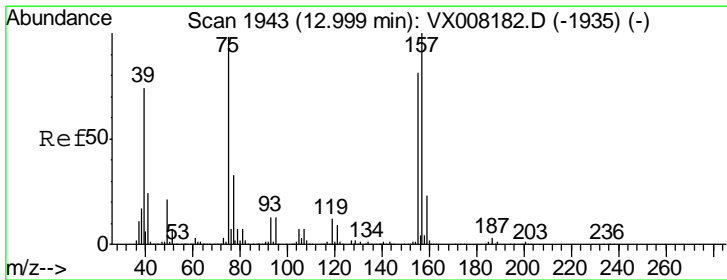
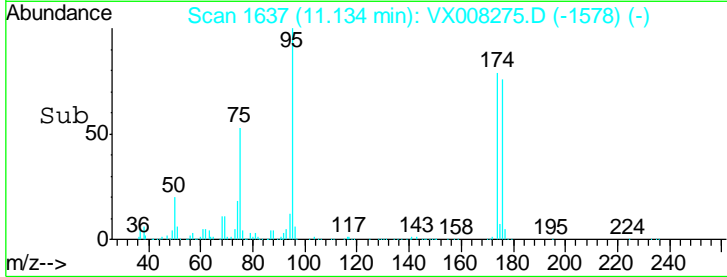
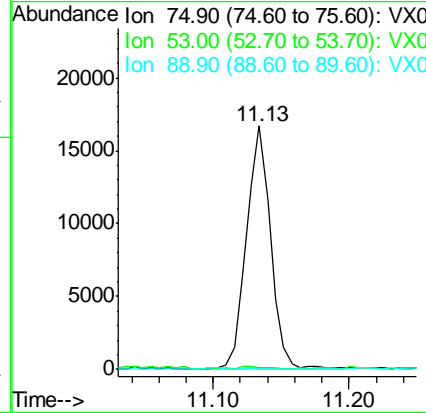
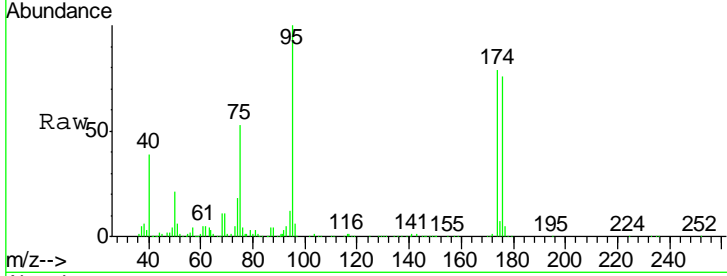




#81  
 trans-1,4-Dichloro-2-butene  
 Concen: 34.045 ug/l  
 RT: 11.13 min Scan# 1637  
 Delta R.T. 0.06 min  
 Lab File: VX008275.D  
 Acq: 21 Mar 2019 05:46

Instrument : MSVOA\_X  
 ClientSampleId : M4-T4-OZ(POST-HYPO)

Tgt Ion	Resp	Lower	Upper
75	100		
53	2.0	76.1	114.1#
89	0.6	36.3	54.5#



#92  
 1,2-Dibromo-3-Chloropropane  
 Concen: 0.239 ug/l  
 RT: 13.00 min Scan# 1943  
 Delta R.T. 0.00 min  
 Lab File: VX008275.D  
 Acq: 21 Mar 2019 05:46

Tgt Ion	Resp	Lower	Upper
75	100		
155	0.0	49.7	149.1#
157	0.0	63.8	191.4#

