

Data Path : Z:\VOASRV\HPCHEM1\MSVOA X\DATA\VX032019\
 Data File : VX008236.D
 Acq On : 20 Mar 2019 12:45
 Operator : JC/SP
 Sample : K1860-01
 Misc : 5.0mL/MSVOA X/WATER
 ALS Vial : 8 Sample Multiplier: 1

Instrument :
 MSVOA_X
 ClientSampleId :
 EB-02-20190311

Quant Time: Mar 22 06:44:31 2019
 Quant Method : Z:\VOASRV\HPCHEM1\MSVOA_X\METHOD\82X031919W.M
 Quant Title : SW846 8260
 QLast Update : Tue Mar 19 13:15:13 2019
 Response via : Initial Calibration

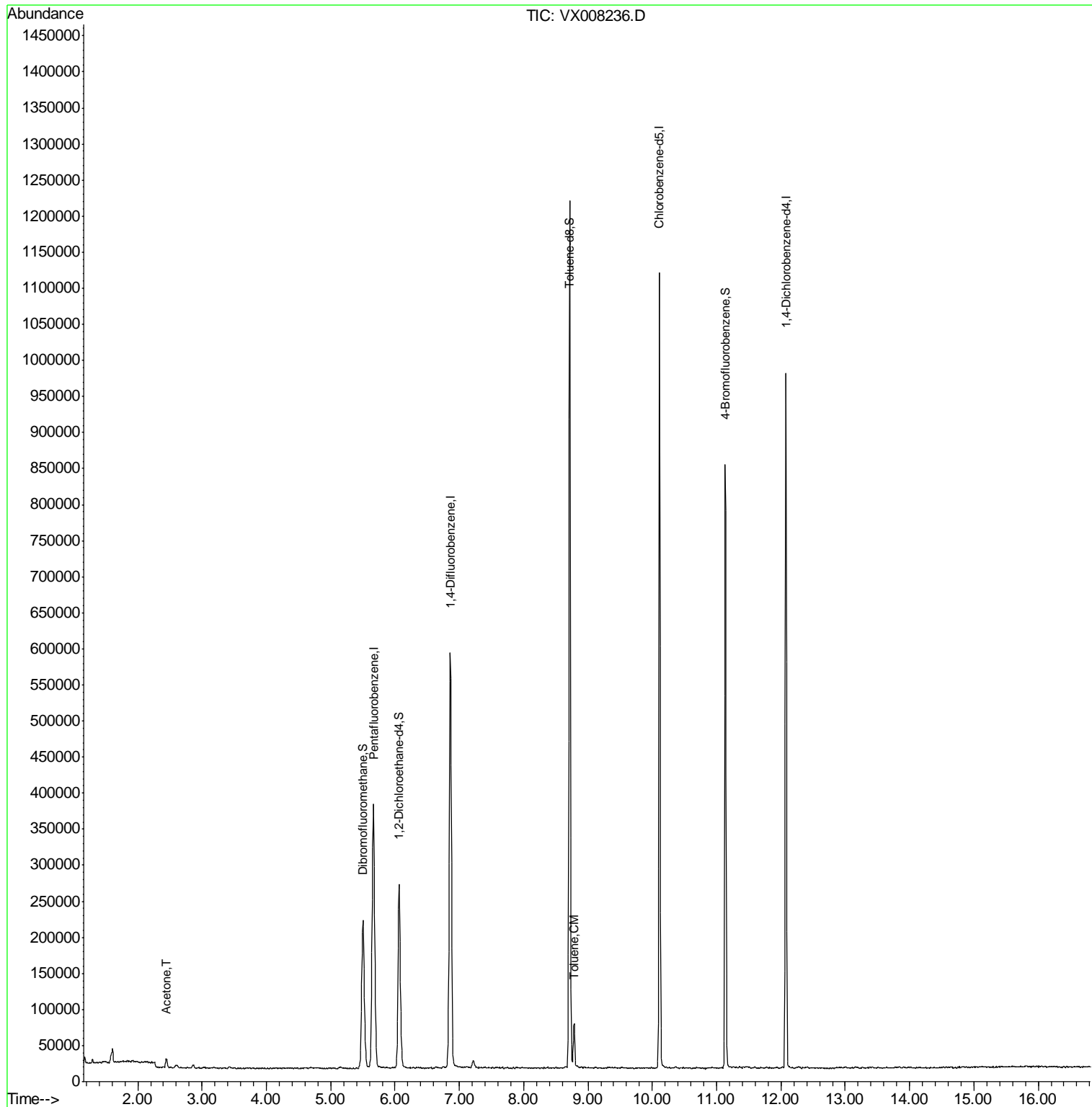
Internal Standards	R.T.	QIon	Response	Conc	Units	Dev(Min)
1) Pentafluorobenzene	5.67	168	343818	50.00	ug/l	0.00
34) 1,4-Difluorobenzene	6.86	114	562147	50.00	ug/l	0.00
63) Chlorobenzene-d5	10.11	117	474202	50.00	ug/l	0.00
72) 1,4-Dichlorobenzene-d4	12.08	152	192297	50.00	ug/l	0.00
System Monitoring Compounds						
33) 1,2-Dichloroethane-d4	6.06	65	238934	46.14	ug/l	0.00
Spiked Amount	50.000		Recovery	=	92.28%	
35) Dibromofluoromethane	5.50	113	177575	47.19	ug/l	0.00
Spiked Amount	50.000		Recovery	=	94.38%	
50) Toluene-d8	8.71	98	690400	48.39	ug/l	0.00
Spiked Amount	50.000		Recovery	=	96.78%	
62) 4-Bromofluorobenzene	11.13	95	219468	44.67	ug/l	0.00
Spiked Amount	50.000		Recovery	=	89.34%	
Target Compounds						
16) Acetone	2.45	43	14231	4.846	ug/l	96
52) Toluene	8.79	92	22120	1.925	ug/l	94

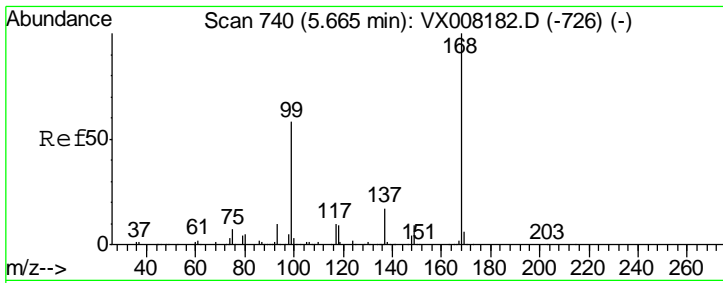
(#) = qualifier out of range (m) = manual integration (+) = signals summed

Data Path : Z:\VOASRV\HPCHEM1\MSVOA X\DATA\VX032019\
 Data File : VX008236.D
 Acq On : 20 Mar 2019 12:45
 Operator : JC/SP
 Sample : K1860-01
 Misc : 5.0mL/MSVOA X/WATER
 ALS Vial : 8 Sample Multiplier: 1

Instrument :
 MSVOA_X
 ClientSampled :
 EB-02-20190311

Quant Time: Mar 22 06:44:31 2019
 Quant Method : Z:\VOASRV\HPCHEM1\MSVOA_X\METHOD\82X031919W.M
 Quant Title : SW846 8260
 QLast Update : Tue Mar 19 13:15:13 2019
 Response via : Initial Calibration

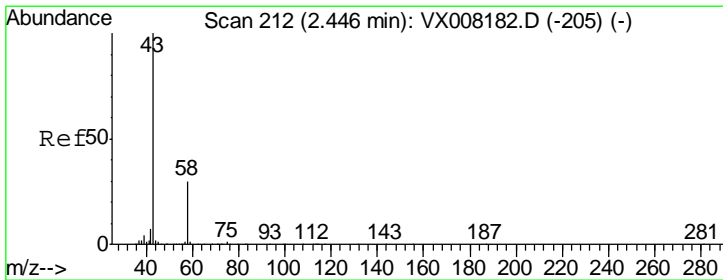
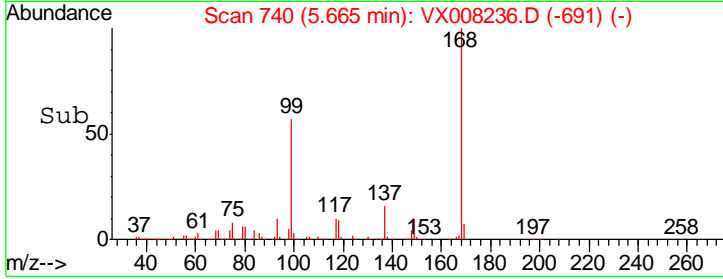
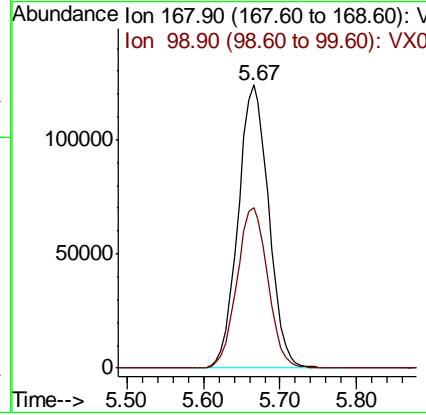
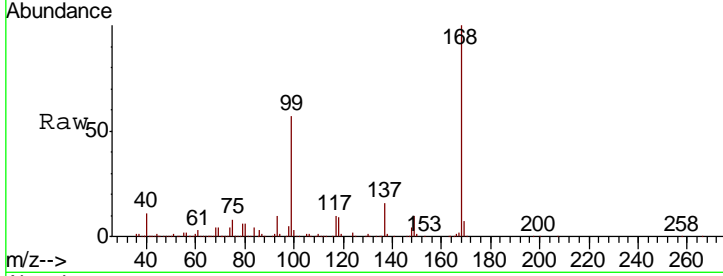




#1
 Pentafluorobenzene
 Concen: 50.000 ug/l
 RT: 5.67 min Scan# 740
 Delta R.T. -0.00 min
 Lab File: VX008236.D
 Acq: 20 Mar 2019 12:45

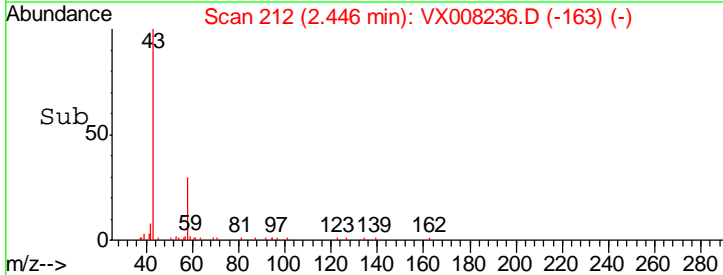
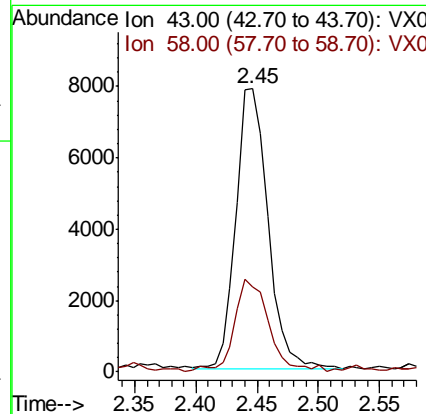
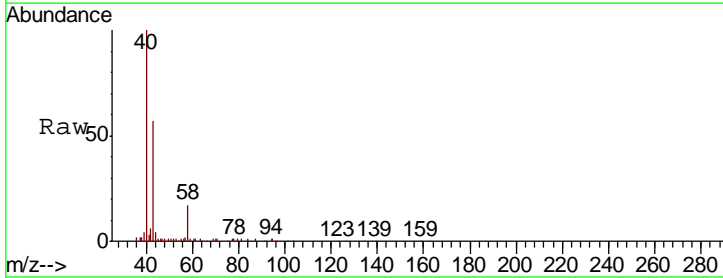
Instrument :
 MSVOA_X
 ClientSampleID :
 EB-02-20190311

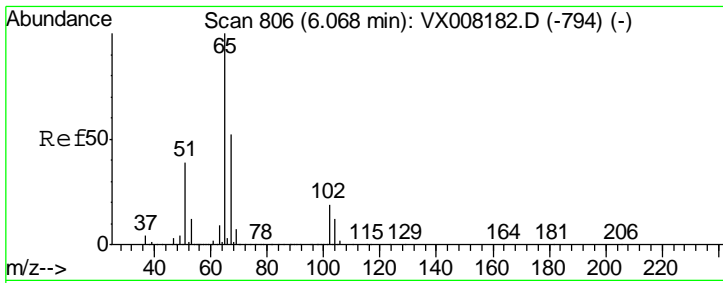
Tgt Ion	Resp	Lower	Upper
168	100		
99	56.8	37.6	56.4#



#16
 Acetone
 Concen: 4.846 ug/l
 RT: 2.45 min Scan# 212
 Delta R.T. -0.00 min
 Lab File: VX008236.D
 Acq: 20 Mar 2019 12:45

Tgt Ion	Resp	Lower	Upper
43	100		
58	29.8	25.5	38.3

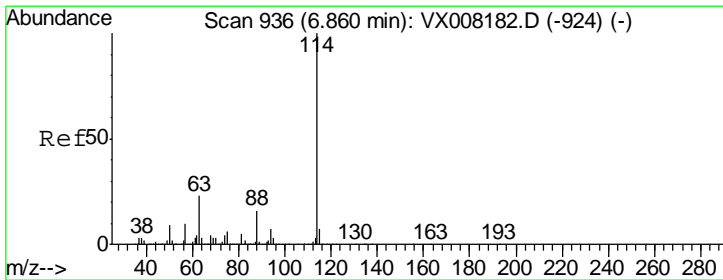
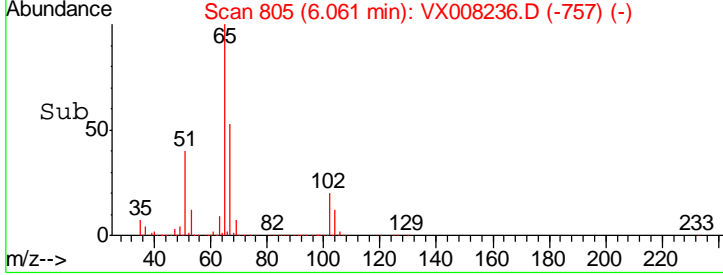
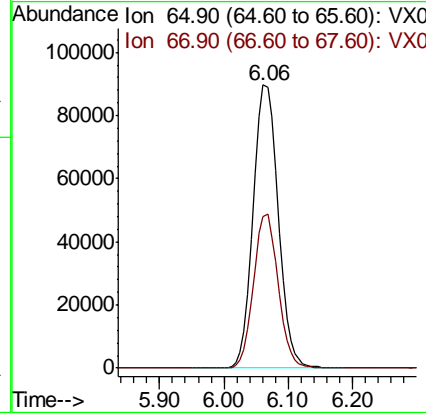
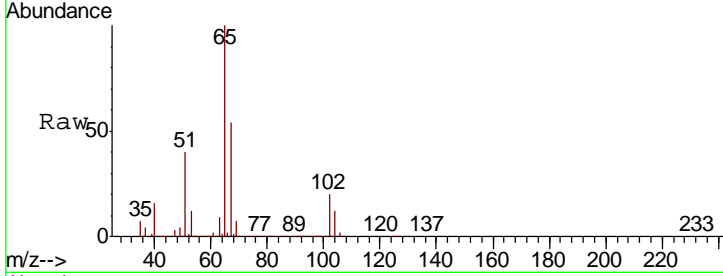




#33
 1,2-Dichloroethane-d4
 Concen: 46.142 ug/l
 RT: 6.06 min Scan# 805
 Delta R.T. -0.01 min
 Lab File: VX008236.D
 Acq: 20 Mar 2019 12:45

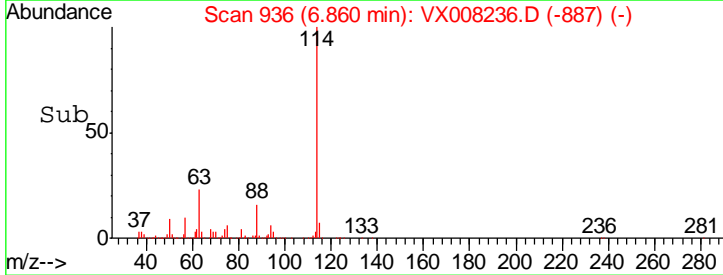
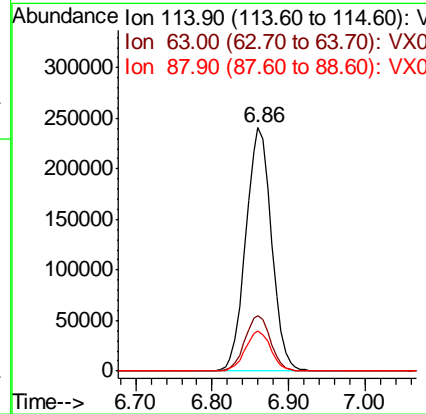
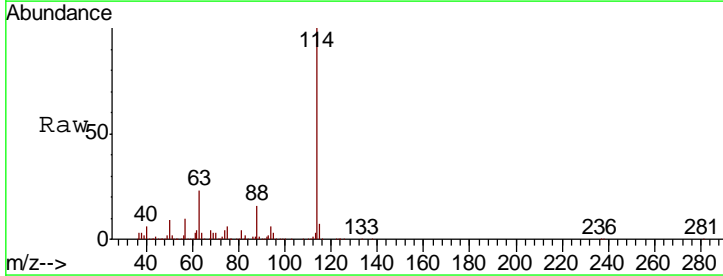
Instrument :
 MSVOA_X
 ClientSampled :
 EB-02-20190311

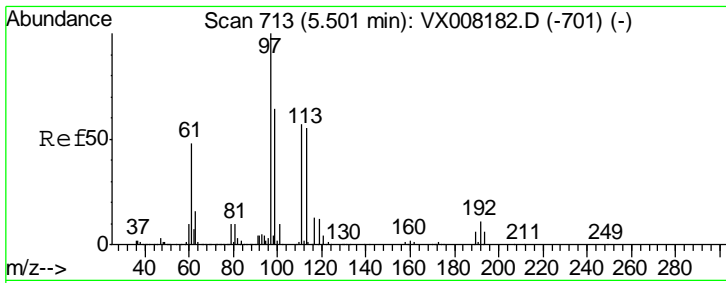
Tgt Ion	Resp	Lower	Upper
65	100		
67	53.0	0.0	110.0



#34
 1,4-Difluorobenzene
 Concen: 50.000 ug/l
 RT: 6.86 min Scan# 936
 Delta R.T. -0.00 min
 Lab File: VX008236.D
 Acq: 20 Mar 2019 12:45

Tgt Ion	Resp	Lower	Upper
114	100		
63	22.8	0.0	39.8
88	16.5	0.0	31.4

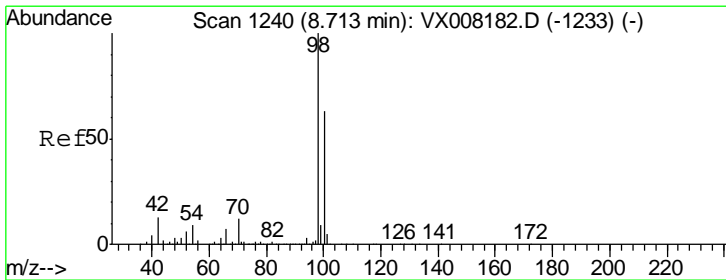
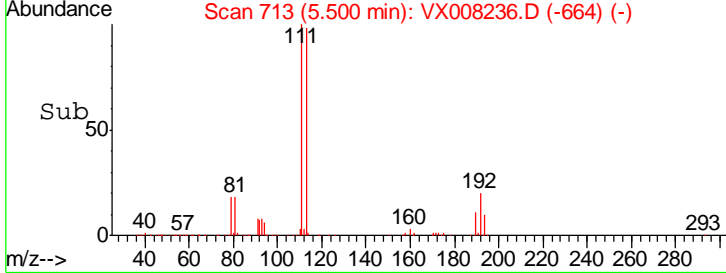
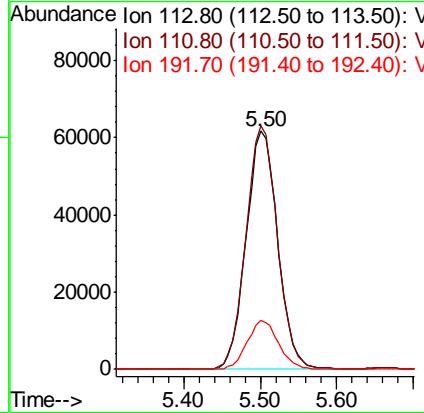
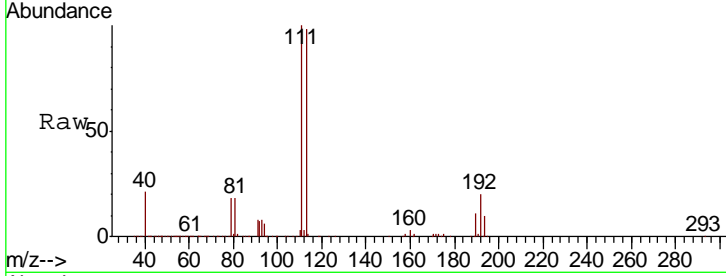




#35
 Dibromofluoromethane
 Concen: 47.187 ug/l
 RT: 5.50 min Scan# 713
 Delta R.T. -0.00 min
 Lab File: VX008236.D
 Acq: 20 Mar 2019 12:45

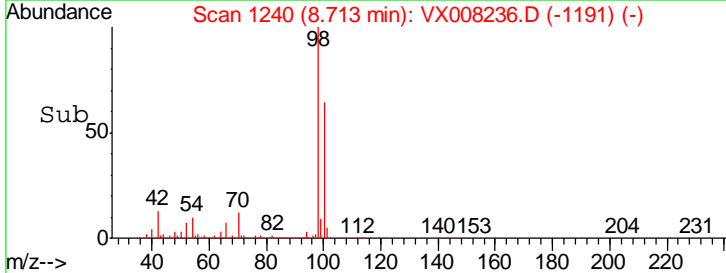
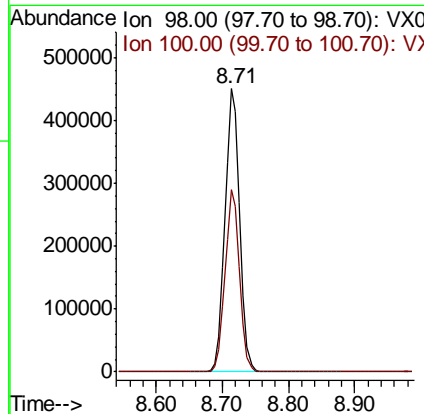
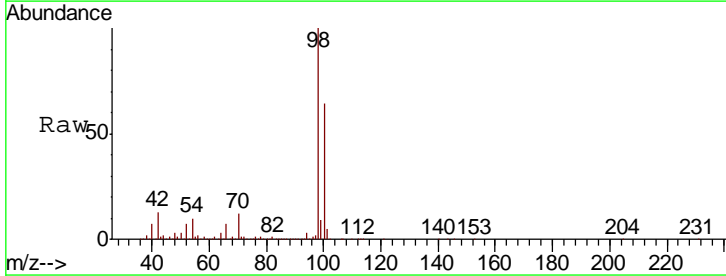
Instrument :
 MSVOA_X
ClientSampled :
 EB-02-20190311

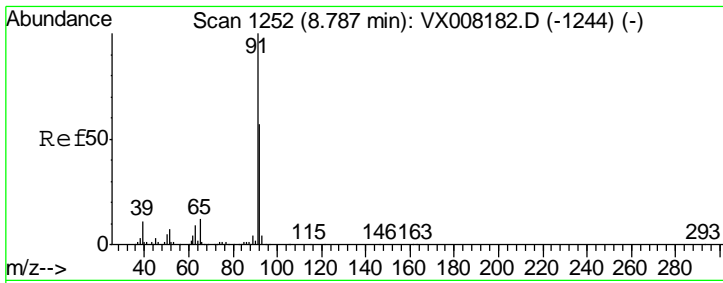
Tgt Ion	Resp	Lower	Upper
113	177575		
113	100		
111	101.8	81.4	122.0
192	20.2	19.4	29.0



#50
 Toluene-d8
 Concen: 48.389 ug/l
 RT: 8.71 min Scan# 1240
 Delta R.T. -0.00 min
 Lab File: VX008236.D
 Acq: 20 Mar 2019 12:45

Tgt Ion	Resp	Lower	Upper
98	690400		
98	100		
100	63.0	51.7	77.5

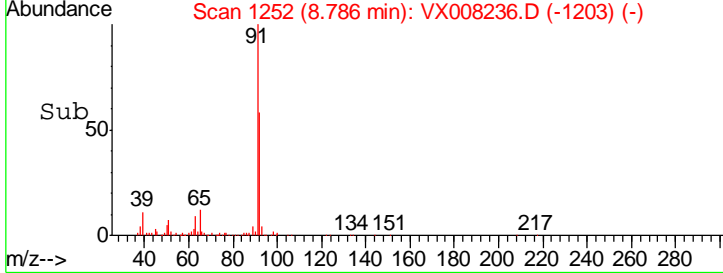
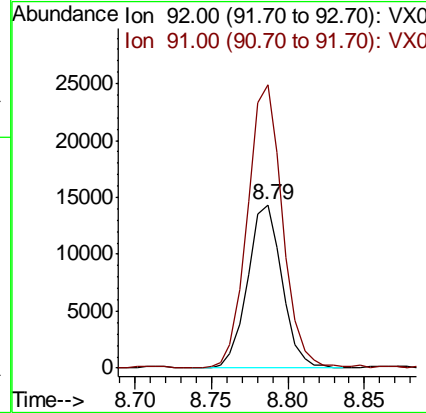
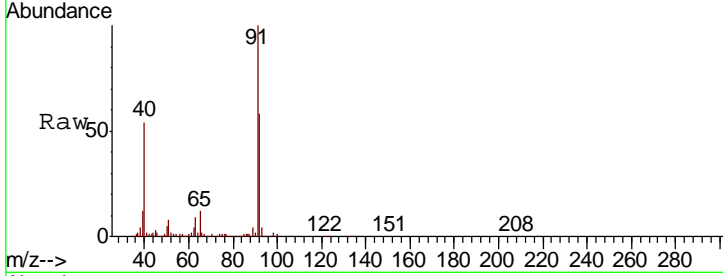




#52
 Toluene
 Concen: 1.925 ug/l
 RT: 8.79 min Scan# 1252
 Delta R.T. -0.00 min
 Lab File: VX008236.D
 Acq: 20 Mar 2019 12:45

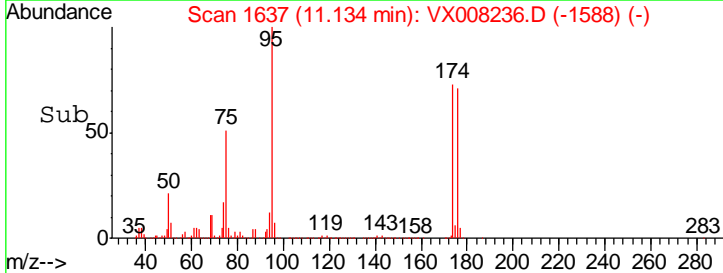
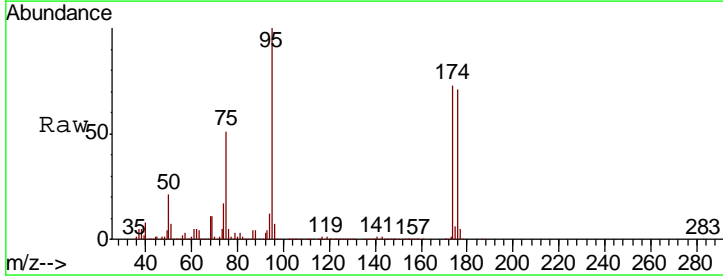
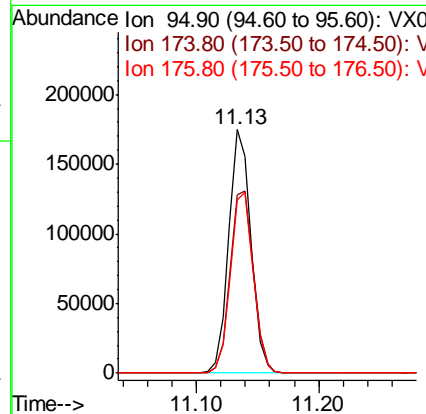
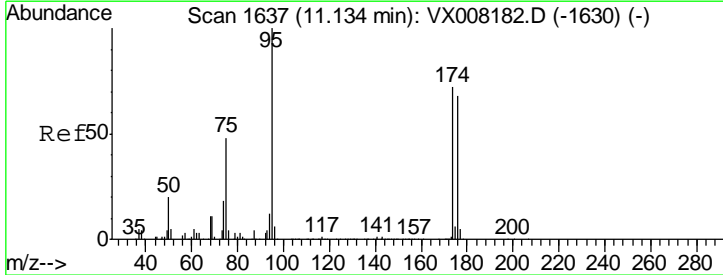
Instrument :
 MSVOA_X
ClientSampled :
 EB-02-20190311

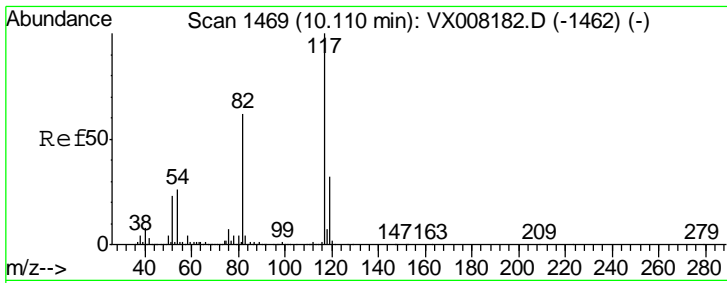
Tgt Ion	Resp	Lower	Upper
92	22120		
92	100		
91	180.4	137.4	206.0



#62
 4-Bromofluorobenzene
 Concen: 44.674 ug/l
 RT: 11.13 min Scan# 1637
 Delta R.T. -0.00 min
 Lab File: VX008236.D
 Acq: 20 Mar 2019 12:45

Tgt Ion	Resp	Lower	Upper
95	219468		
95	100		
174	78.8	0.0	182.8
176	76.3	0.0	178.0

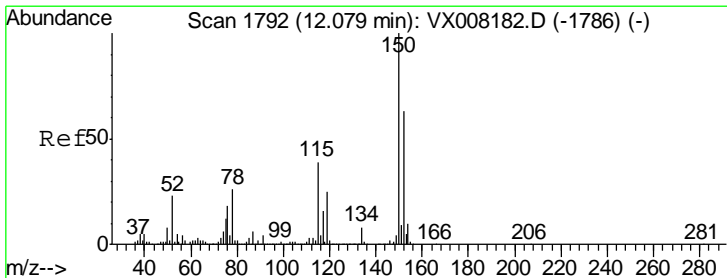
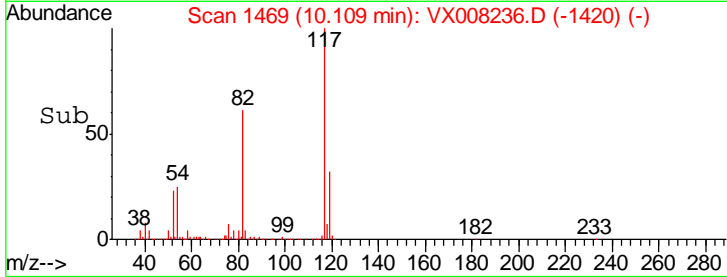
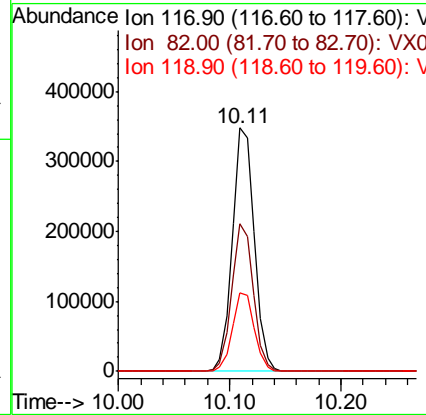
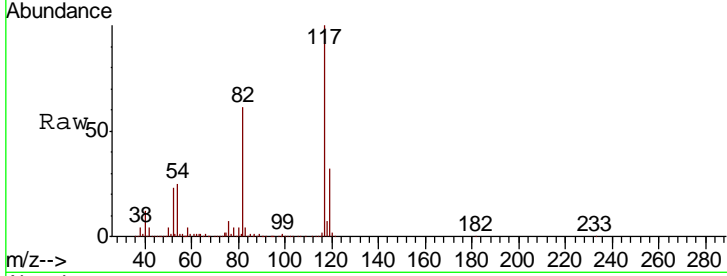




#63
 Chlorobenzene-d5
 Concen: 50.000 ug/l
 RT: 10.11 min Scan# 1469
 Delta R.T. -0.00 min
 Lab File: VX008236.D
 Acq: 20 Mar 2019 12:45

Instrument :
 MSVOA_X
 ClientSampled :
 EB-02-20190311

Tgt Ion	Resp	Lower	Upper
117	474202		
82	60.6	44.3	66.5
119	32.0	25.3	37.9



#72
 1,4-Dichlorobenzene-d4
 Concen: 50.000 ug/l
 RT: 12.08 min Scan# 1792
 Delta R.T. -0.00 min
 Lab File: VX008236.D
 Acq: 20 Mar 2019 12:45

Tgt Ion	Resp	Lower	Upper
152	192297		
115	59.7	38.6	115.7
150	156.0	0.0	348.4

