

Data Path : Z:\VOASRV\HPCHEM1\MSVOA X\DATA\VX032119\  
 Data File : VX008289.D  
 Acq On : 21 Mar 2019 14:33  
 Operator : JC/SP  
 Sample : K1985-04  
 Misc : 5.0mL/MSVOA X/WATER  
 ALS Vial : 8 Sample Multiplier: 1

Instrument :  
 MSVOA\_X  
 ClientSampleId :  
 BPS1-TT-MW308I-20190317

Integration Parameters: RTEINT.P  
 Integrator: RTE  
 Smoothing : ON Filtering: 5  
 Sampling : 1 Min Area: 3 % of largest Peak  
 Start Thrs: 0.2 Max Peaks: 100  
 Stop Thrs : 0 Peak Location: TOP

If leading or trailing edge < 100 prefer < Baseline drop else tangent >  
 Peak separation: 5

Method : Z:\VOASRV\HPCHEM1\MSVOA\_X\METHOD\82X031919W.M  
 Title : SW846 8260

Signal : TIC

peak #	R.T. min	first scan	max scan	last scan	PK TY	peak height	corr. area	corr. % max.	% of total
1	1.276	16	20	31	rVB	121352	164290	10.29%	1.960%
2	1.611	67	75	81	rBV	31985	66769	4.18%	0.796%
3	2.611	233	239	244	rVB	9072	17340	1.09%	0.207%
4	5.501	698	713	727	rBV	184304	537256	33.66%	6.409%
5	5.665	727	740	752	rVV	321531	881314	55.22%	10.513%
6	6.068	795	806	819	rBV	217366	574982	36.03%	6.859%
7	6.860	925	936	950	rBV	509892	1189282	74.52%	14.187%
8	8.713	1234	1240	1248	rBV	1040172	1595934	100.00%	19.037%
9	10.110	1461	1469	1484	rBV	964562	1315947	82.46%	15.698%
10	11.134	1631	1637	1647	rBV	748387	959285	60.11%	11.443%
11	12.079	1786	1792	1805	rVB	860202	1080736	67.72%	12.892%

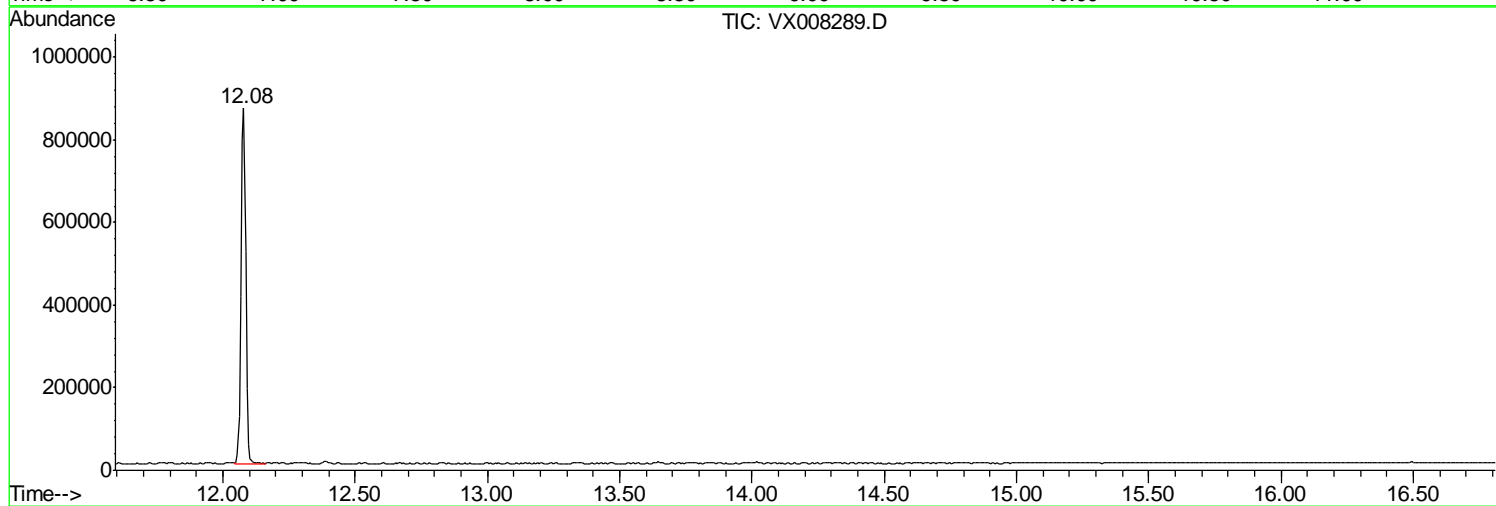
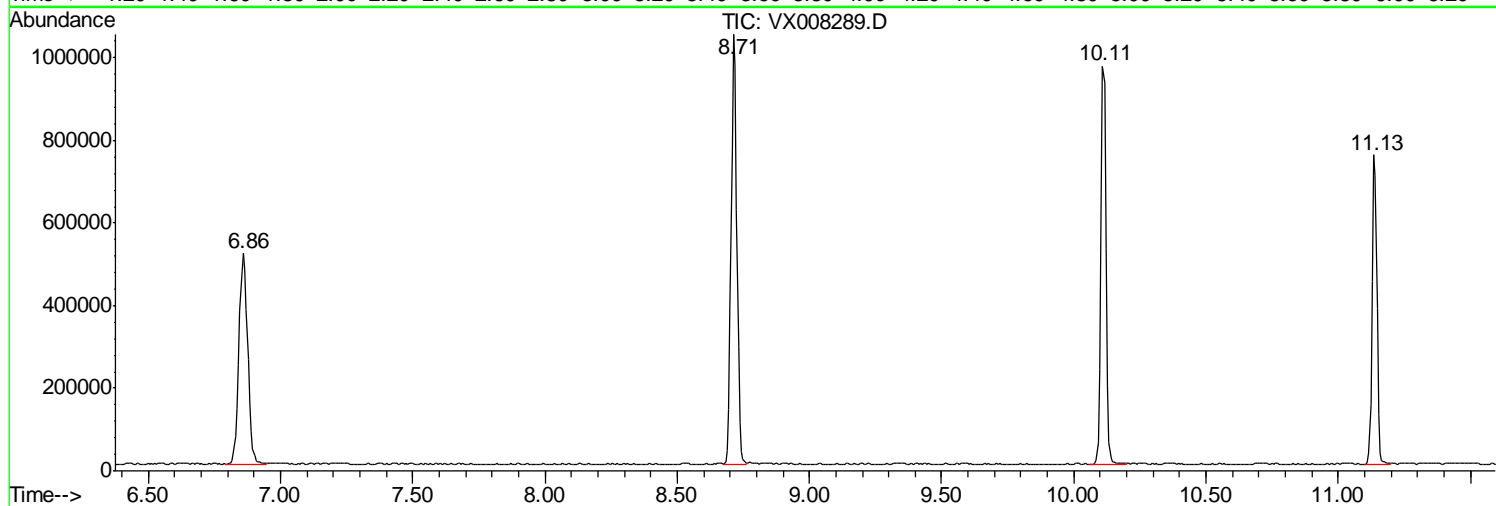
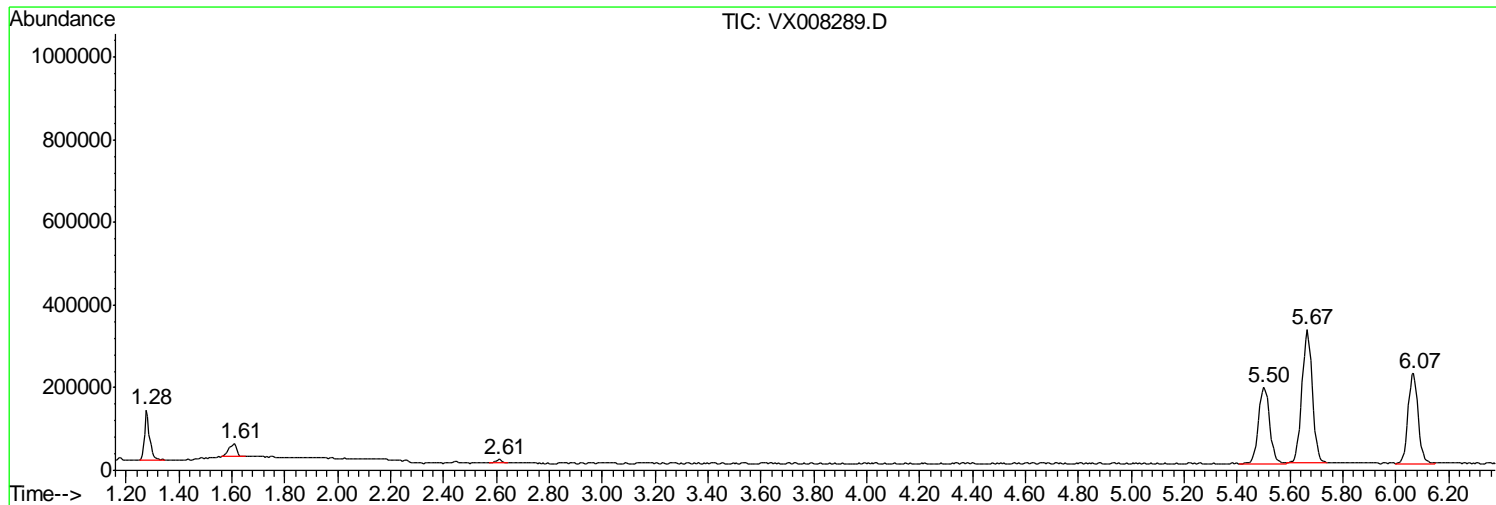
Sum of corrected areas: 8383135

Data Path : Z:\VOASRV\HPCHEM1\MSVOA X\DATA\VX032119\  
Data File : VX008289.D  
Acq On : 21 Mar 2019 14:33  
Operator : JC/SP  
Sample : K1985-04  
Misc : 5.0mL/MSVOA X/WATER  
ALS Vial : 8 Sample Multiplier: 1

Instrument :  
MSVOA\_X  
ClientSampled :  
BPS1-TT-MW308I-20190317

Quant Method : Z:\VOASRV\HPCHEM1\MSVOA\_X\METHOD\82X031919W.M  
Quant Title : SW846 8260

TIC Library : C:\DATABASE\NIST11.L  
TIC Integration Parameters: LSCINT.P



Data Path : Z:\VOASRV\HPCHEM1\MSVOA\_X\DATA\VX032119\  
Data File : VX008289.D  
Acq On : 21 Mar 2019 14:33  
Operator : JC/SP  
Sample : K1985-04  
Misc : 5.0mL/MSVOA\_X/WATER  
ALS Vial : 8 Sample Multiplier: 1

**Instrument :**  
MSVOA\_X  
**ClientSampleId :**  
BPS1-TT-MW308I-20190317

Quant Method : Z:\VOASRV\HPCHEM1\MSVOA\_X\METHOD\82X031919W.M  
Quant Title : SW846 8260

TIC Library : C:\DATABASE\NIST11.L  
TIC Integration Parameters: LSCINT.P

No Library Search Compounds Detected

\*\*\*\*\*

Data Path : Z:\VOASRV\HPCHEM1\MSVOA\_X\DATA\VX032119\  
Data File : VX008289.D  
Acq On : 21 Mar 2019 14:33  
Operator : JC/SP  
Sample : K1985-04  
Misc : 5.0mL/MSVOA\_X/WATER  
ALS Vial : 8 Sample Multiplier: 1

Instrument :  
MSVOA\_X  
ClientSampleId :  
BPS1-TT-MW308I-20190317

Quant Method : Z:\VOASRV\HPCHEM1\MSVOA\_X\METHOD\82X031919W.M  
Quant Title : SW846 8260

TIC Library : C:\DATABASE\NIST11.L  
TIC Integration Parameters: LSCINT.P

TIC Top Hit name	RT	EstConc	Units	Response	--Internal Standard--			
					#	RT	Resp	Conc

---