

Data Path : Z:\voasrv\HPCHEM1\MSVOA_X\Data\VX032122\
 Data File : VX027580.D
 Acq On : 21 Mar 2022 12:45
 Operator : JC/MD
 Sample : VX0321WBL01
 Misc : 5.0mL/MSVOA_X/WATER
 ALS Vial : 4 Sample Multiplier: 1

Instrument :
 MSVOA_X
 ClientSampleId :
 VX0321WBL01

Quant Time: Mar 22 05:44:19 2022
 Quant Method : Z:\voasrv\HPCHEM1\MSVOA_X\Method\82X031722W.M
 Quant Title : SW846 8260
 QLast Update : Thu Mar 17 15:02:59 2022
 Response via : Initial Calibration

Compound	R.T.	QIon	Response	Conc	Units	Dev(Min)

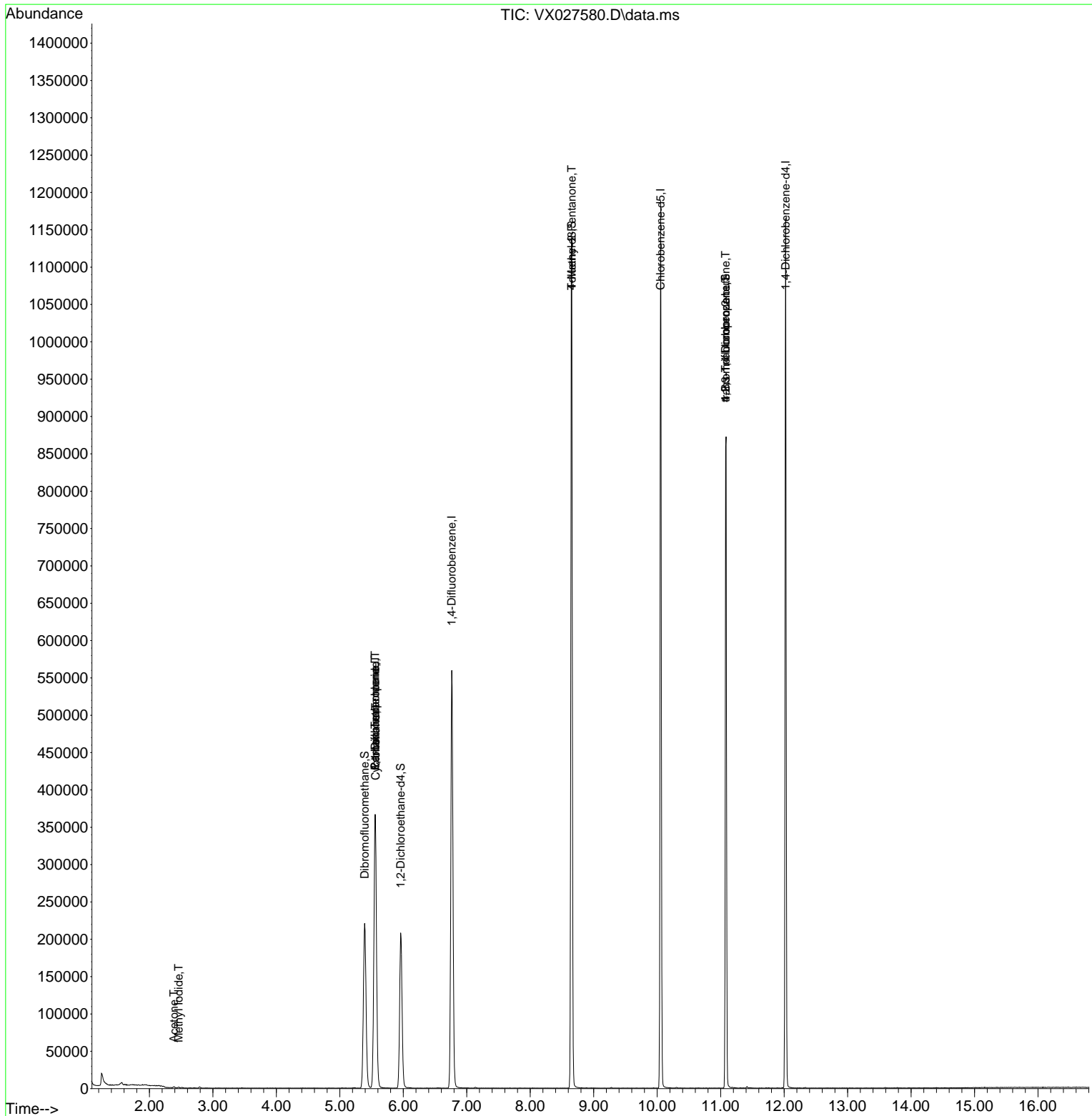
Internal Standards						
1) Pentafluorobenzene	5.556	168	380578	50.000	ug/l	0.00
34) 1,4-Difluorobenzene	6.763	114	615518	50.000	ug/l	0.00
63) Chlorobenzene-d5	10.055	117	556338	50.000	ug/l	0.00
72) 1,4-Dichlorobenzene-d4	12.024	152	249119	50.000	ug/l	0.00
System Monitoring Compounds						
33) 1,2-Dichloroethane-d4	5.958	65	198490	42.337	ug/l	0.00
Spiked Amount	50.000	Range 61 - 141	Recovery =	84.680%		
35) Dibromofluoromethane	5.391	113	198852	50.214	ug/l	0.00
Spiked Amount	50.000	Range 69 - 133	Recovery =	100.420%		
50) Toluene-d8	8.653	98	713159	47.590	ug/l	0.00
Spiked Amount	50.000	Range 65 - 126	Recovery =	95.180%		
62) 4-Bromofluorobenzene	11.079	95	248138	45.050	ug/l	0.00
Spiked Amount	50.000	Range 58 - 135	Recovery =	90.100%		
Target Compounds						
						Qvalue
5) Bromomethane	1.611	94	896	Below Cal		87
10) Methyl Iodide	2.459	142	1066	0.219	ug/l	98
16) Acetone	2.386	43	1399	0.732	ug/l #	87
31) Cyclohexane	5.562	56	5573	0.957	ug/l #	1
36) 1,1-Dichloropropene	5.556	75	24084	4.450	ug/l #	49
38) Carbon Tetrachloride	5.556	117	35418	5.721	ug/l #	15
51) 4-Methyl-2-Pentanone	8.653	43	2302	0.416	ug/l #	1
76) 1,2,3-Trichloropropane	11.079	75	114931	22.057	ug/l #	38
81) trans-1,4-Dichloro-2-b...	11.079	75	114931	66.987	ug/l #	15

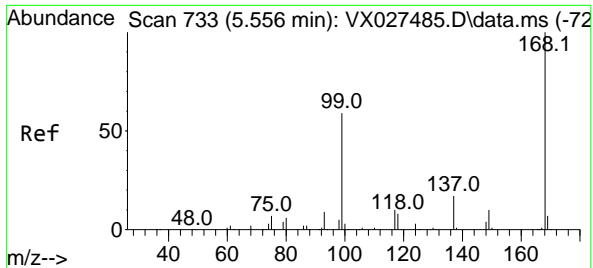
(#) = qualifier out of range (m) = manual integration (+) = signals summed

Data Path : Z:\voasrv\HPCHEM1\MSVOA_X\Data\VX032122\
 Data File : VX027580.D
 Acq On : 21 Mar 2022 12:45
 Operator : JC/MD
 Sample : VX0321WBL01
 Misc : 5.0mL/MSVOA_X/WATER
 ALS Vial : 4 Sample Multiplier: 1

Instrument :
 MSVOA_X
 ClientSampleId :
 VX0321WBL01

Quant Time: Mar 22 05:44:19 2022
 Quant Method : Z:\voasrv\HPCHEM1\MSVOA_X\Method\82X031722W.M
 Quant Title : SW846 8260
 QLast Update : Thu Mar 17 15:02:59 2022
 Response via : Initial Calibration

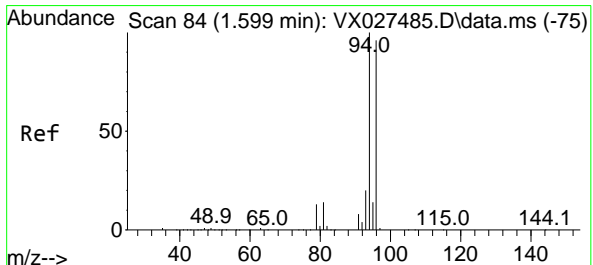
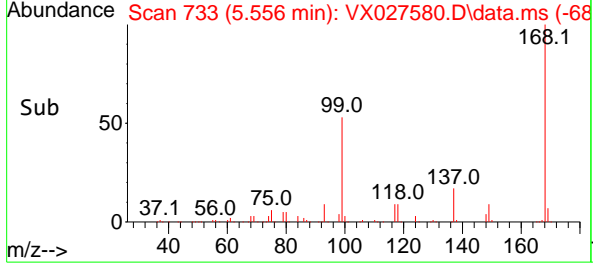
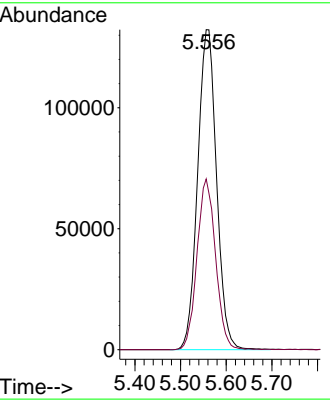
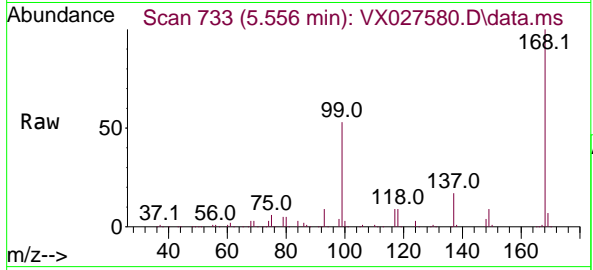




#1
 Pentafluorobenzene
 Concen: 50.000 ug/l
 RT: 5.556 min Scan# 71
 Delta R.T. -0.000 min
 Lab File: VX027580.D
 Acq: 21 Mar 2022 12:45

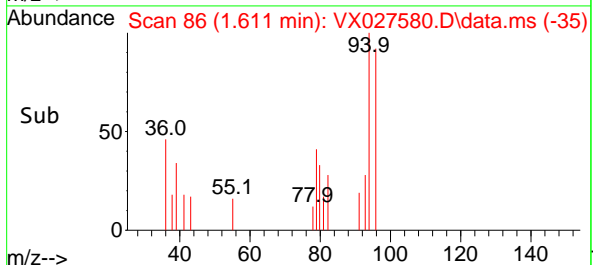
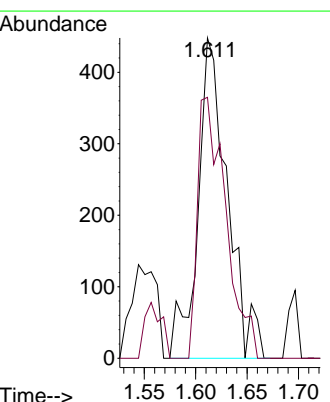
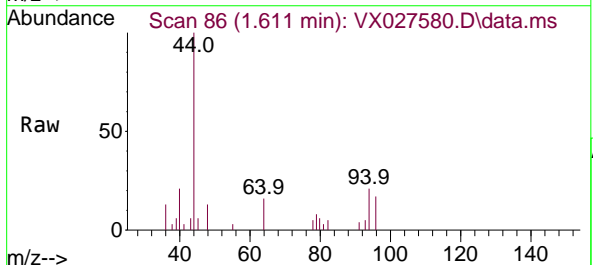
Instrument : MSVOA_X
 ClientSampleId : VX0321WBL01

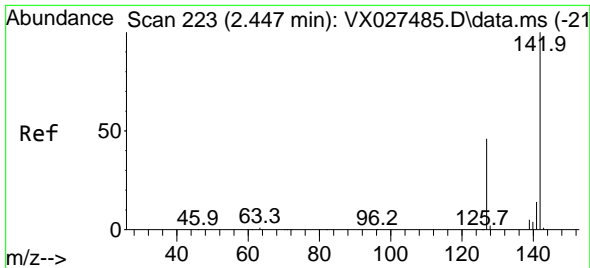
Tgt Ion:168 Resp: 380578
 Ion Ratio Lower Upper
 168 100
 99 53.4 41.7 62.5



#5
 Bromomethane
 Concen: Below Cal
 RT: 1.611 min Scan# 86
 Delta R.T. 0.012 min
 Lab File: VX027580.D
 Acq: 21 Mar 2022 12:45

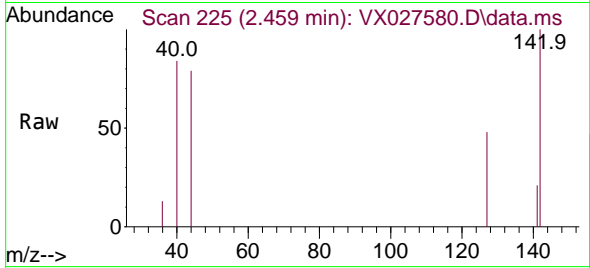
Tgt Ion: 94 Resp: 896
 Ion Ratio Lower Upper
 94 100
 96 81.5 75.3 112.9



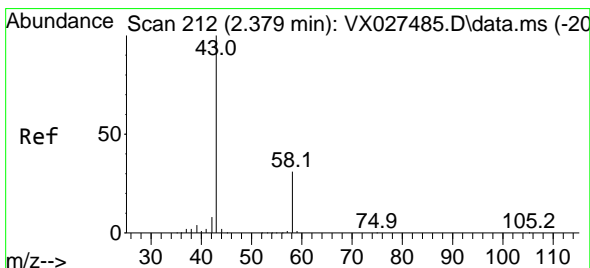
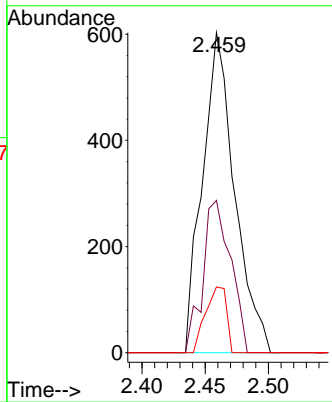
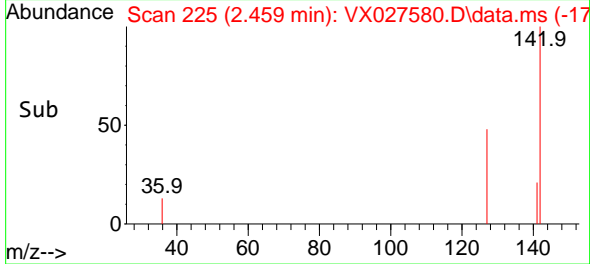


#10
Methyl Iodide
Concen: 0.219 ug/l
RT: 2.459 min Scan# 21
Delta R.T. 0.012 min
Lab File: VX027580.D
Acq: 21 Mar 2022 12:45

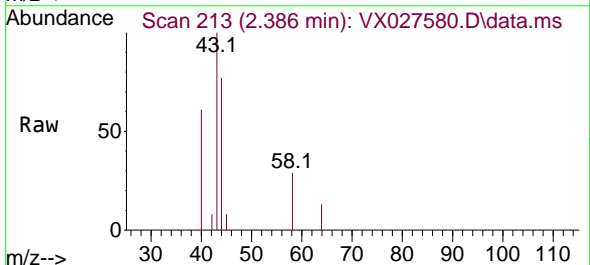
Instrument : MSVOA_X
ClientSampleId : VX0321WBL01



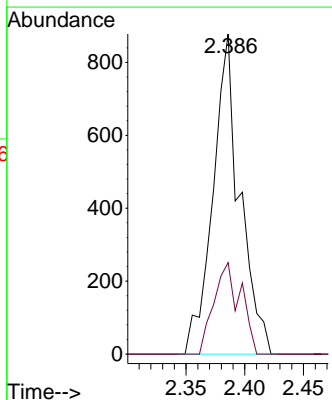
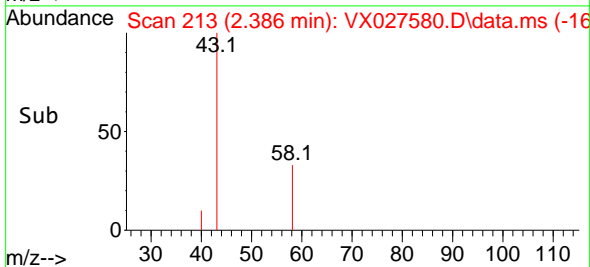
Tgt Ion:142 Resp: 1066
Ion Ratio Lower Upper
142 100
127 41.3 33.9 50.9
141 13.3 11.4 17.2

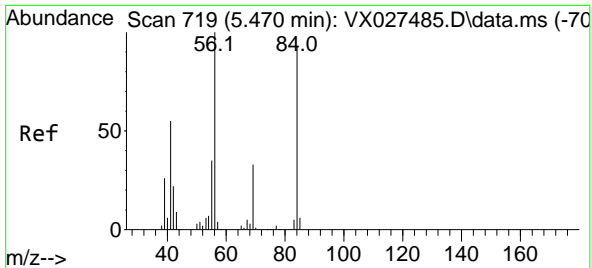


#16
Acetone
Concen: 0.732 ug/l
RT: 2.386 min Scan# 213
Delta R.T. 0.006 min
Lab File: VX027580.D
Acq: 21 Mar 2022 12:45



Tgt Ion: 43 Resp: 1399
Ion Ratio Lower Upper
43 100
58 28.6 28.8 43.2#

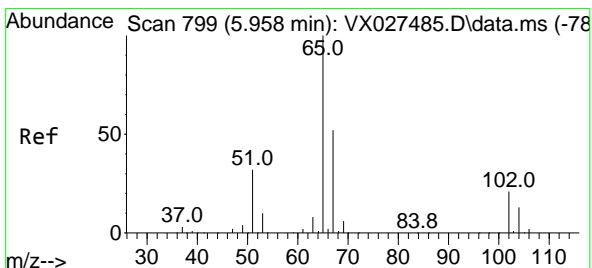
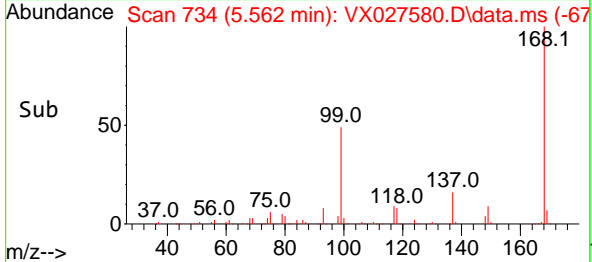
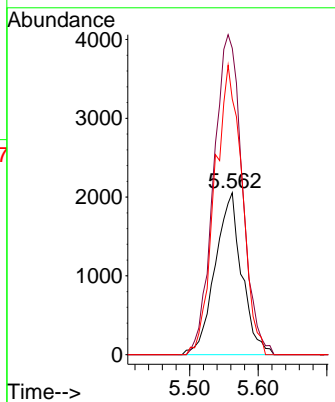
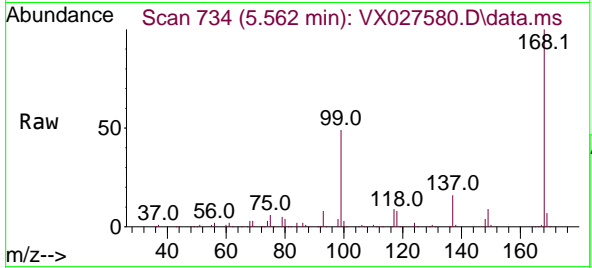




#31
 Cyclohexane
 Concen: 0.957 ug/l
 RT: 5.562 min Scan# 719
 Delta R.T. 0.092 min
 Lab File: VX027580.D
 Acq: 21 Mar 2022 12:45

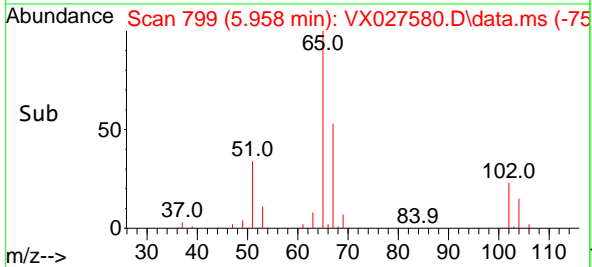
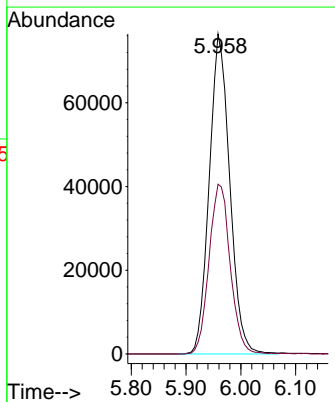
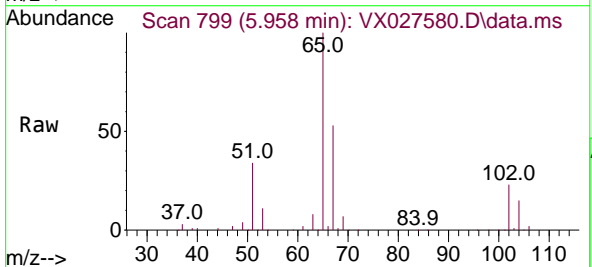
Instrument : MSVOA_X
 ClientSampleId : VX0321WBL01

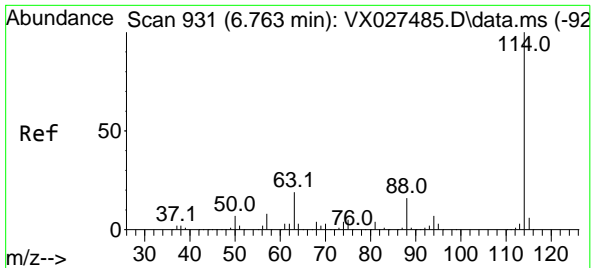
Tgt Ion	Resp	Lower	Upper
56	100		
69	189.2	26.7	40.1#
84	157.8	77.2	115.8#



#33
 1,2-Dichloroethane-d4
 Concen: 42.337 ug/l
 RT: 5.958 min Scan# 799
 Delta R.T. 0.000 min
 Lab File: VX027580.D
 Acq: 21 Mar 2022 12:45

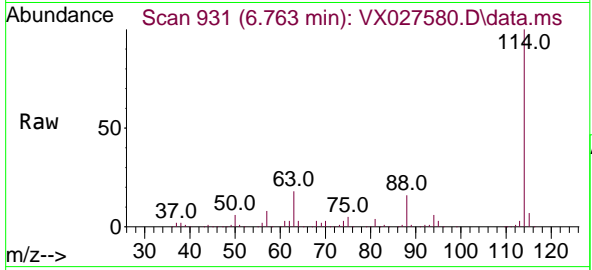
Tgt Ion	Resp	Lower	Upper
65	100		
67	54.8	0.0	107.4





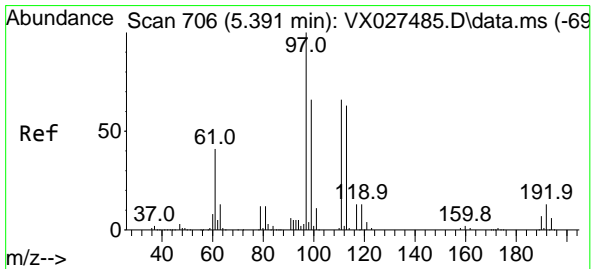
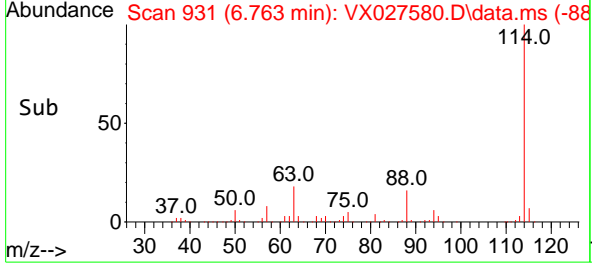
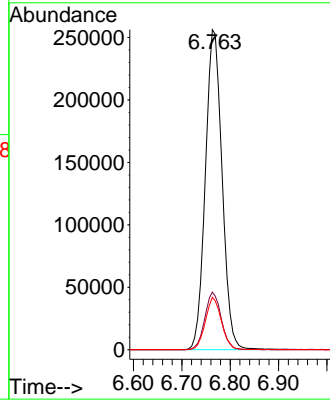
#34
 1,4-Difluorobenzene
 Concen: 50.000 ug/l
 RT: 6.763 min Scan# 911
 Delta R.T. 0.000 min
 Lab File: VX027580.D
 Acq: 21 Mar 2022 12:45

Instrument : MSVOA_X
 ClientSampleId : VX0321WBL01



Tgt Ion:114 Resp: 615518

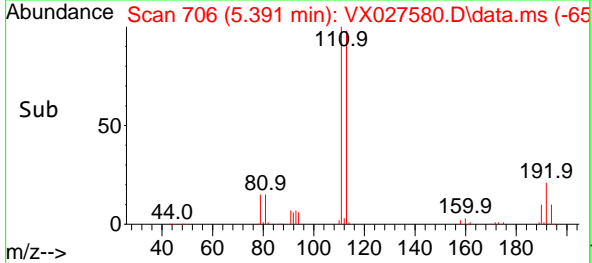
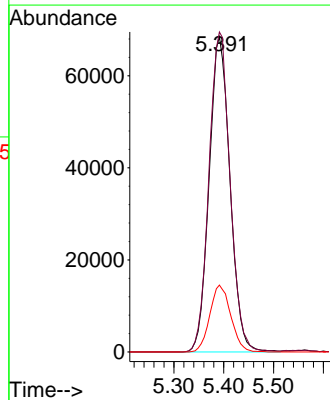
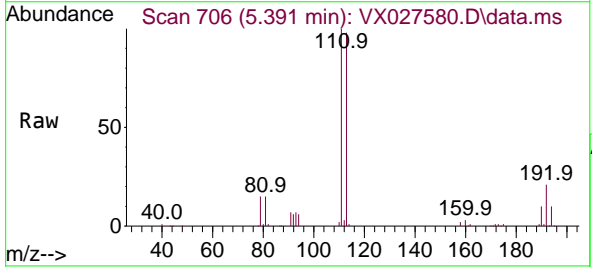
Ion	Ratio	Lower	Upper
114	100		
63	18.0	0.0	36.8
88	16.4	0.0	32.4

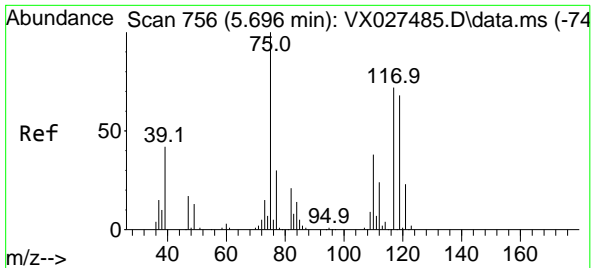


#35
 Dibromofluoromethane
 Concen: 50.214 ug/l
 RT: 5.391 min Scan# 706
 Delta R.T. 0.000 min
 Lab File: VX027580.D
 Acq: 21 Mar 2022 12:45

Tgt Ion:113 Resp: 198852

Ion	Ratio	Lower	Upper
113	100		
111	102.9	82.8	124.2
192	21.3	16.9	25.3

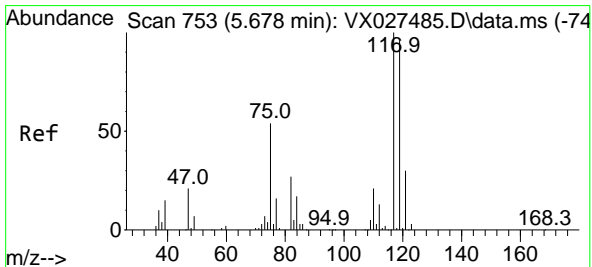
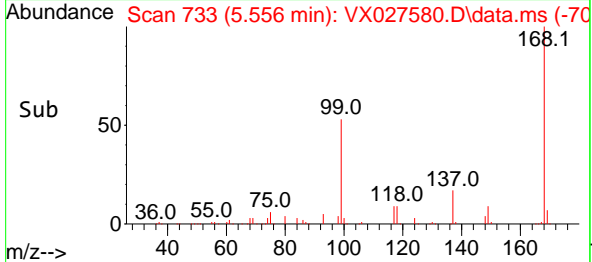
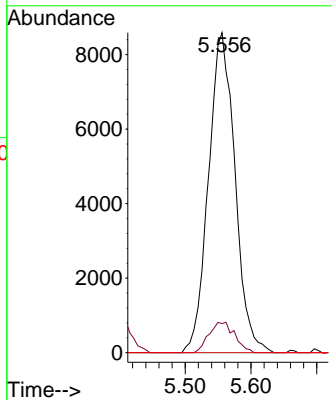
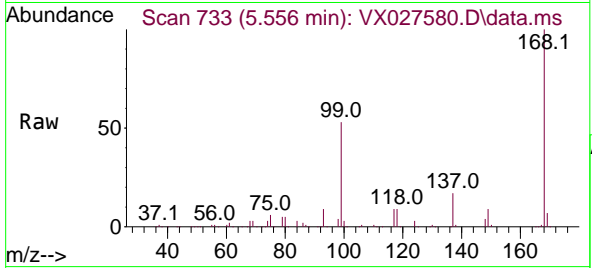




#36
 1,1-Dichloropropene
 Concen: 4.450 ug/l
 RT: 5.556 min Scan# 711
 Delta R.T. -0.140 min
 Lab File: VX027580.D
 Acq: 21 Mar 2022 12:45

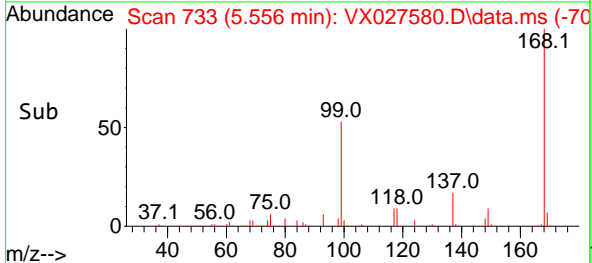
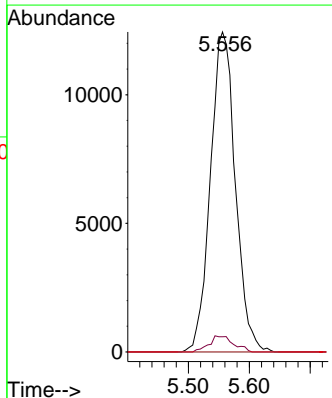
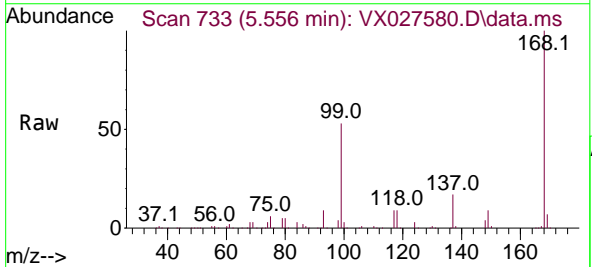
Instrument : MSVOA_X
 ClientSampleId : VX0321WBL01

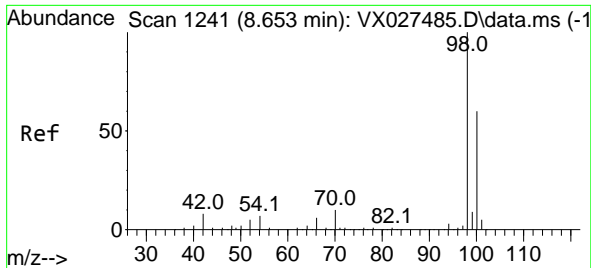
Tgt Ion	Resp	Lower	Upper
75	24084		
110	9.2	18.3	54.8#
77	0.0	24.8	37.2#



#38
 Carbon Tetrachloride
 Concen: 5.721 ug/l
 RT: 5.556 min Scan# 733
 Delta R.T. -0.122 min
 Lab File: VX027580.D
 Acq: 21 Mar 2022 12:45

Tgt Ion	Resp	Lower	Upper
117	35418		
119	4.8	77.3	115.9#
121	0.0	24.2	36.2#

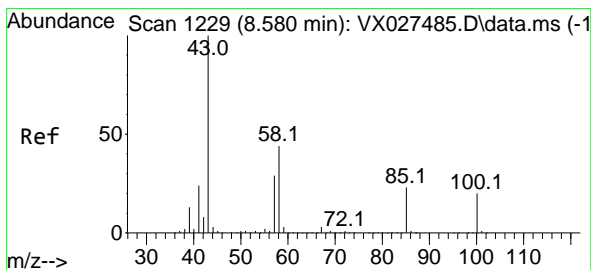
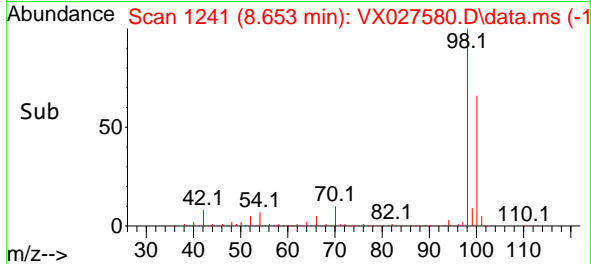
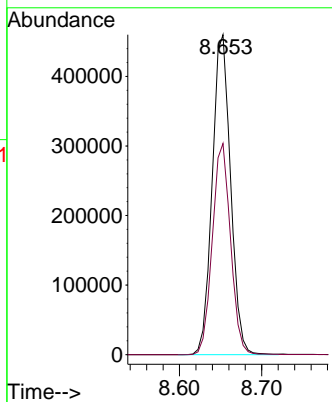
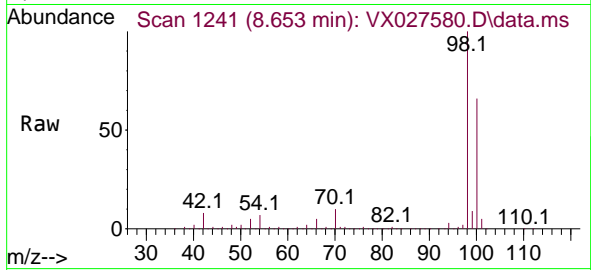




#50
 Toluene-d8
 Concen: 47.590 ug/l
 RT: 8.653 min Scan# 1241
 Delta R.T. 0.000 min
 Lab File: VX027580.D
 Acq: 21 Mar 2022 12:45

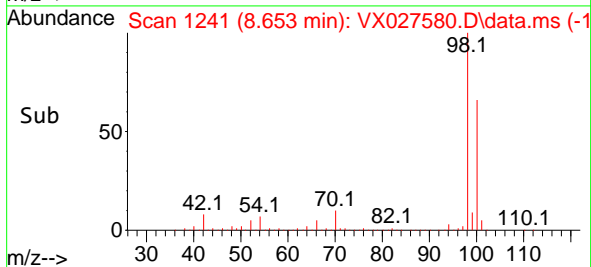
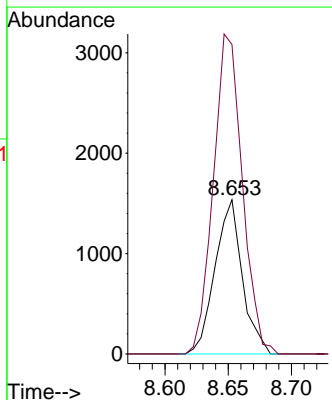
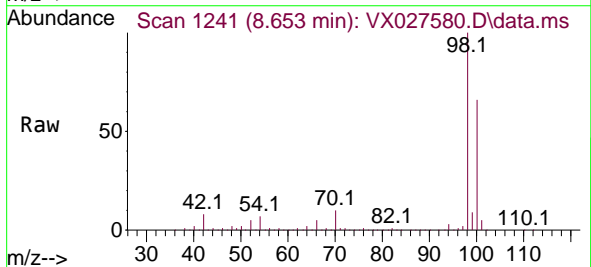
Instrument : MSVOA_X
 ClientSampleId : VX0321WBL01

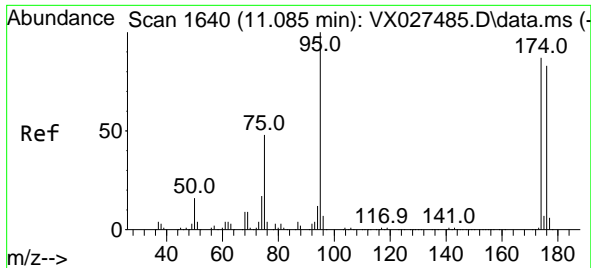
Tgt Ion: 98 Resp: 713159
 Ion Ratio Lower Upper
 98 100
 100 65.4 52.6 78.8



#51
 4-Methyl-2-Pentanone
 Concen: 0.416 ug/l
 RT: 8.653 min Scan# 1241
 Delta R.T. 0.073 min
 Lab File: VX027580.D
 Acq: 21 Mar 2022 12:45

Tgt Ion: 43 Resp: 2302
 Ion Ratio Lower Upper
 43 100
 58 220.6 36.1 54.1#

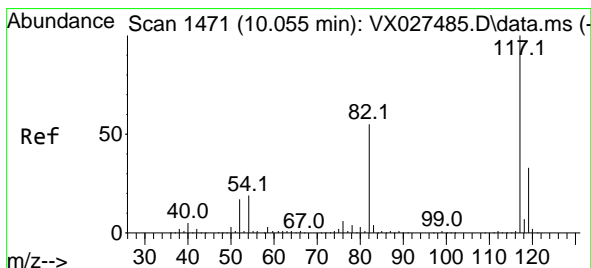
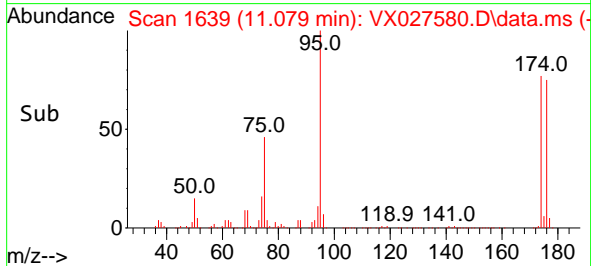
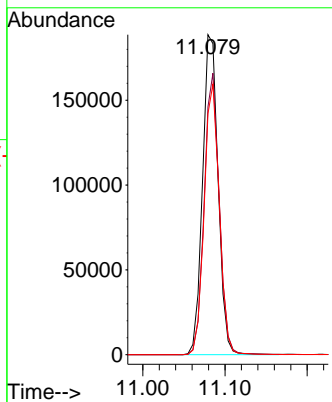
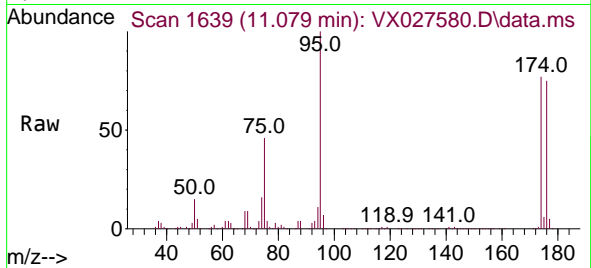




#62
 4-Bromofluorobenzene
 Concen: 45.050 ug/l
 RT: 11.079 min Scan# 1639
 Delta R.T. -0.006 min
 Lab File: VX027580.D
 Acq: 21 Mar 2022 12:45

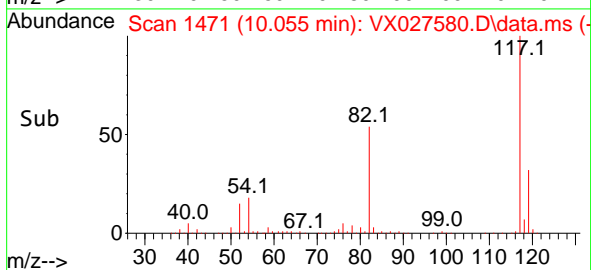
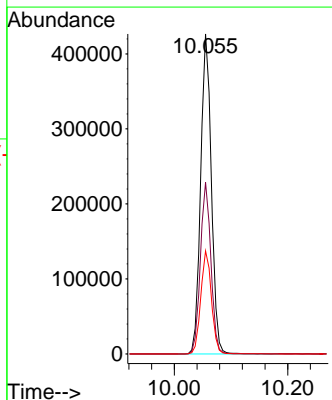
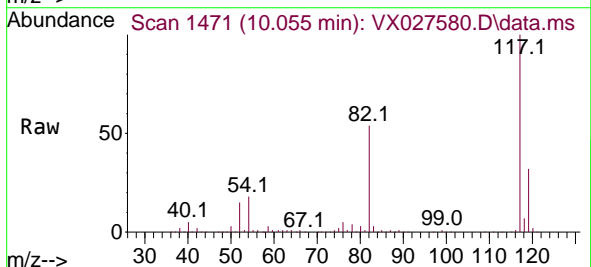
Instrument : MSVOA_X
 ClientSampleId : VX0321WBL01

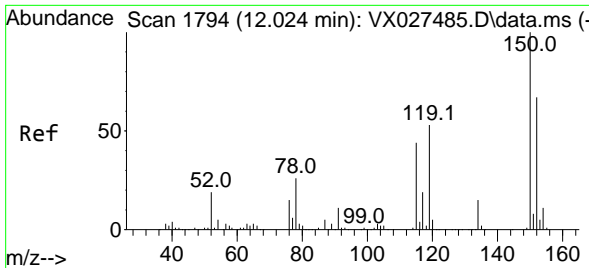
Tgt Ion: 95 Resp: 248138
 Ion Ratio Lower Upper
 95 100
 174 84.9 0.0 163.0
 176 82.5 0.0 155.0



#63
 Chlorobenzene-d5
 Concen: 50.000 ug/l
 RT: 10.055 min Scan# 1471
 Delta R.T. 0.000 min
 Lab File: VX027580.D
 Acq: 21 Mar 2022 12:45

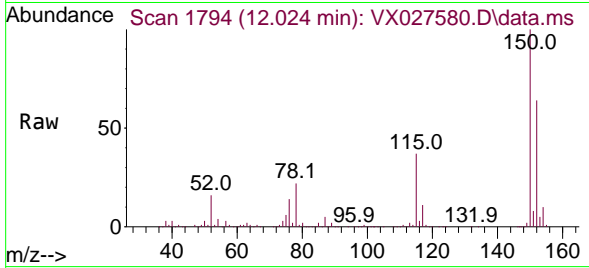
Tgt Ion: 117 Resp: 556338
 Ion Ratio Lower Upper
 117 100
 82 53.6 41.8 62.8
 119 32.2 24.8 37.2



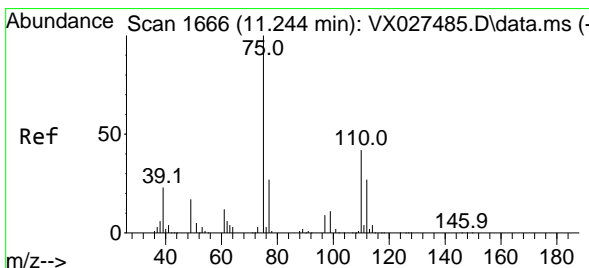
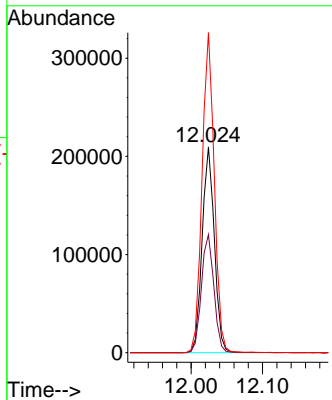
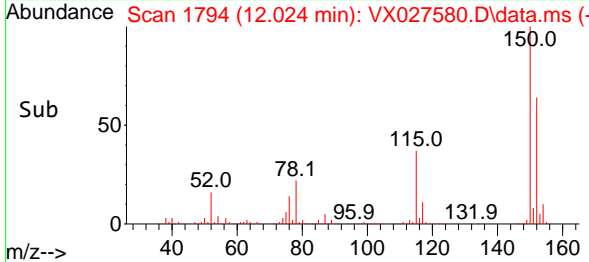


#72
 1,4-Dichlorobenzene-d4
 Concen: 50.000 ug/l
 RT: 12.024 min Scan# 11
 Delta R.T. 0.000 min
 Lab File: VX027580.D
 Acq: 21 Mar 2022 12:45

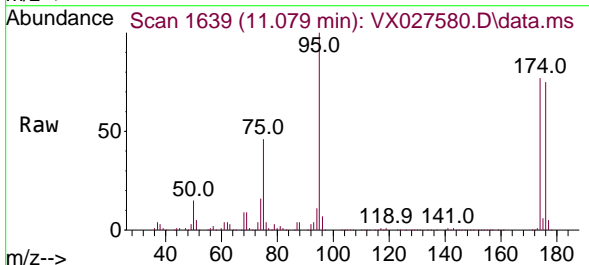
Instrument :
 MSVOA_X
 ClientSampleId :
 VX0321WBL01



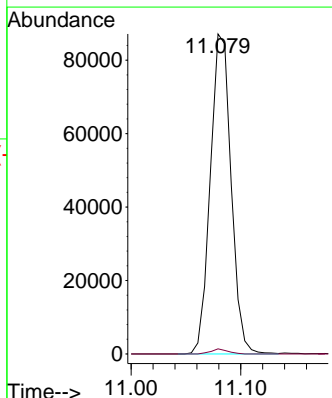
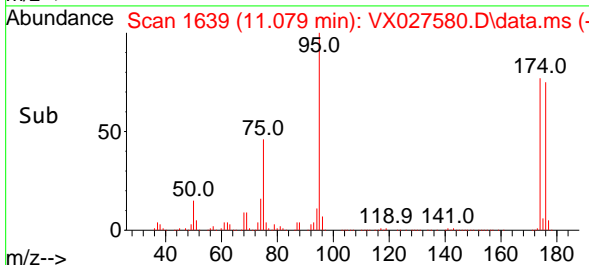
Tgt Ion:152 Resp: 249119
 Ion Ratio Lower Upper
 152 100
 115 58.7 37.5 112.7
 150 155.2 0.0 338.2

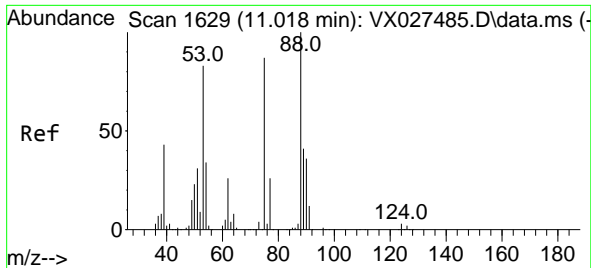


#76
 1,2,3-Trichloropropane
 Concen: 22.057 ug/l
 RT: 11.079 min Scan# 1639
 Delta R.T. -0.164 min
 Lab File: VX027580.D
 Acq: 21 Mar 2022 12:45



Tgt Ion: 75 Resp: 114931
 Ion Ratio Lower Upper
 75 100
 77 1.3 19.4 58.2#





#81
 trans-1,4-Dichloro-2-butene
 Concen: 66.987 ug/l
 RT: 11.079 min Scan# 1
 Delta R.T. 0.061 min
 Lab File: VX027580.D
 Acq: 21 Mar 2022 12:45

Instrument :
 MSVOA_X
 ClientSampleId :
 VX0321WBL01

Tgt Ion: 75 Resp: 114931
 Ion Ratio Lower Upper
 75 100
 53 0.0 69.0 103.4#
 89 0.0 37.0 55.6#

