

Data Path : Z:\voasrv\HPCHEM1\MSVOA\_X\Data\VX032122\  
 Data File : VX027595.D  
 Acq On : 21 Mar 2022 18:47  
 Operator : JC/MD  
 Sample : N2000-12  
 Misc : 5.0mL/MSVOA\_X/WATER  
 ALS Vial : 19 Sample Multiplier: 1

Instrument :  
 MSVOA\_X  
 ClientSampleId :  
 RE-139D2-20220316

Quant Time: Mar 22 05:49:18 2022  
 Quant Method : Z:\voasrv\HPCHEM1\MSVOA\_X\Method\82X031722W.M  
 Quant Title : SW846 8260  
 QLast Update : Thu Mar 17 15:02:59 2022  
 Response via : Initial Calibration

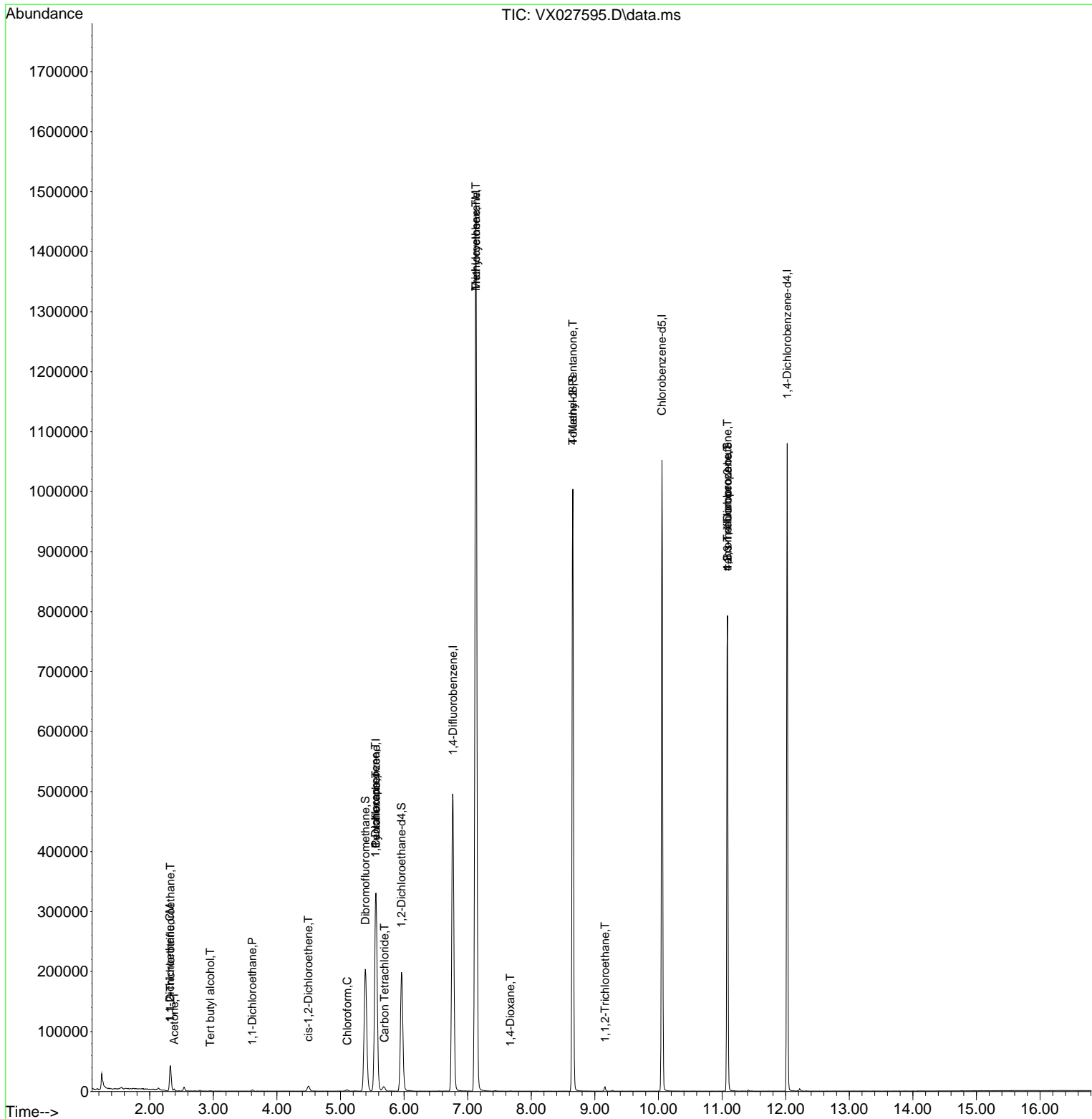
Compound	R.T.	QIon	Response	Conc	Units	Dev(Min)
-----						
Internal Standards						
1) Pentafluorobenzene	5.556	168	332878	50.000	ug/l	0.00
34) 1,4-Difluorobenzene	6.769	114	553296	50.000	ug/l	0.00
63) Chlorobenzene-d5	10.055	117	501346	50.000	ug/l	0.00
72) 1,4-Dichlorobenzene-d4	12.024	152	231374	50.000	ug/l	0.00
System Monitoring Compounds						
33) 1,2-Dichloroethane-d4	5.958	65	193870	47.277	ug/l	0.00
Spiked Amount	50.000	Range 61 - 141	Recovery	=	94.560%	
35) Dibromofluoromethane	5.391	113	181006	50.847	ug/l	0.00
Spiked Amount	50.000	Range 69 - 133	Recovery	=	101.700%	
50) Toluene-d8	8.653	98	637599	47.332	ug/l	0.00
Spiked Amount	50.000	Range 65 - 126	Recovery	=	94.660%	
62) 4-Bromofluorobenzene	11.085	95	221305	44.697	ug/l	0.00
Spiked Amount	50.000	Range 58 - 135	Recovery	=	89.400%	
Target Compounds						
						Qvalue
5) Bromomethane	1.611	94	502	Below Cal	#	74
9) 1,1,2-Trichlorotrifluo...	2.325	101	8915	2.767	ug/l	94
11) Tert butyl alcohol	2.953	59	358	0.458	ug/l #	72
12) 1,1-Dichloroethene	2.318	96	8559	2.769	ug/l	92
16) Acetone	2.386	43	3317	1.984	ug/l	89
24) 1,1-Dichloroethane	3.611	63	2274	0.396	ug/l #	82
27) cis-1,2-Dichloroethene	4.495	96	5687	1.487	ug/l	90
30) Chloroform	5.105	83	2747	0.433	ug/l	99
31) Cyclohexane	5.556	56	5497	1.080	ug/l #	1
36) 1,1-Dichloropropene	5.550	75	22930	4.714	ug/l #	49
38) Carbon Tetrachloride	5.690	117	7306	1.313	ug/l	94
39) Methylcyclohexane	7.129	83	5910	0.966	ug/l #	1
44) Trichloroethene	7.129	130	615563	145.293	ug/l	98
49) 1,4-Dioxane	7.671	88	273	2.753	ug/l #	35
51) 4-Methyl-2-Pentanone	8.653	43	2188	0.439	ug/l #	1
55) 1,1,2-Trichloroethane	9.159	97	2145	0.563	ug/l	94
76) 1,2,3-Trichloropropane	11.085	75	99860	20.634	ug/l #	38
81) trans-1,4-Dichloro-2-b...	11.085	75	99860	62.666	ug/l #	15
-----						

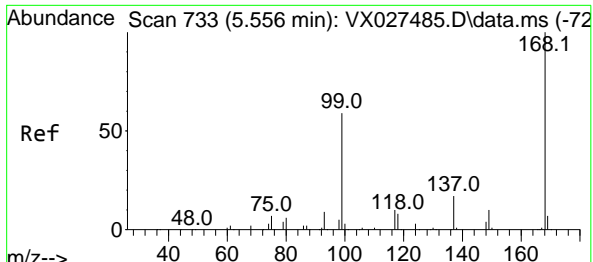
(#) = qualifier out of range (m) = manual integration (+) = signals summed

Data Path : Z:\voasrv\HPCHEM1\MSVOA\_X\Data\VX032122\  
 Data File : VX027595.D  
 Acq On : 21 Mar 2022 18:47  
 Operator : JC/MD  
 Sample : N2000-12  
 Misc : 5.0mL/MSVOA\_X/WATER  
 ALS Vial : 19 Sample Multiplier: 1

Instrument :  
 MSVOA\_X  
 ClientSampleId :  
 RE-139D2-20220316

Quant Time: Mar 22 05:49:18 2022  
 Quant Method : Z:\voasrv\HPCHEM1\MSVOA\_X\Method\82X031722W.M  
 Quant Title : SW846 8260  
 QLast Update : Thu Mar 17 15:02:59 2022  
 Response via : Initial Calibration

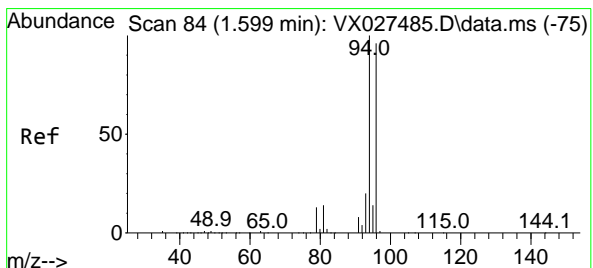
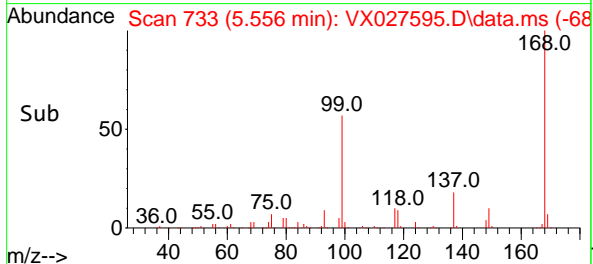
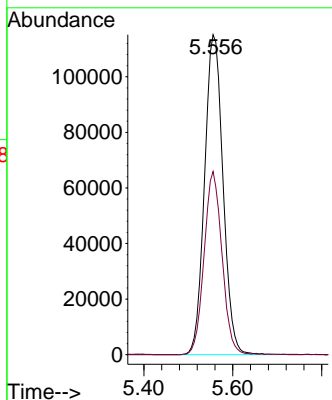
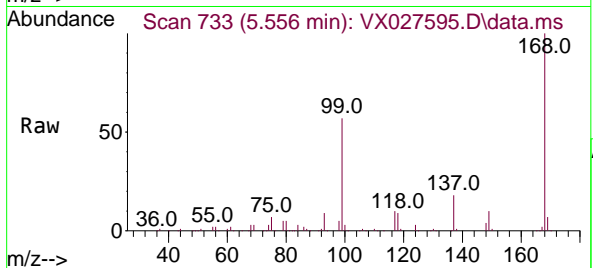




#1  
 Pentafluorobenzene  
 Concen: 50.000 ug/l  
 RT: 5.556 min Scan# 71  
 Delta R.T. -0.000 min  
 Lab File: VX027595.D  
 Acq: 21 Mar 2022 18:47

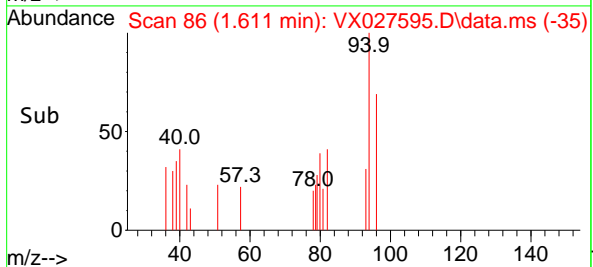
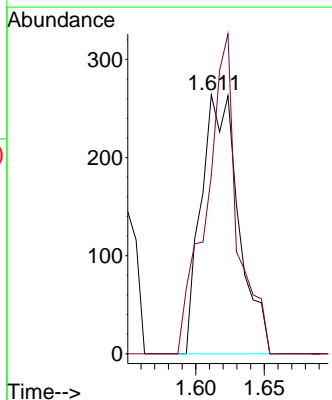
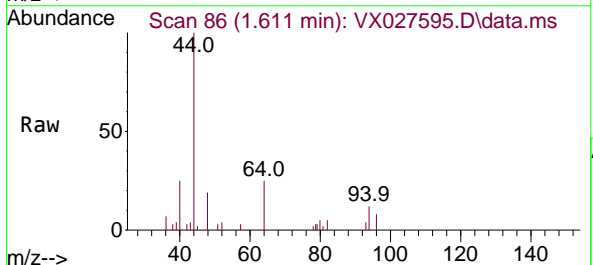
Instrument : MSVOA\_X  
 ClientSampleId : RE-139D2-20220316

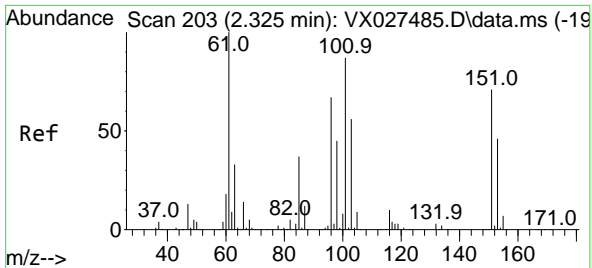
Tgt Ion:168 Resp: 332878  
 Ion Ratio Lower Upper  
 168 100  
 99 57.2 41.7 62.5



#5  
 Bromomethane  
 Concen: Below Cal  
 RT: 1.611 min Scan# 86  
 Delta R.T. 0.012 min  
 Lab File: VX027595.D  
 Acq: 21 Mar 2022 18:47

Tgt Ion: 94 Resp: 502  
 Ion Ratio Lower Upper  
 94 100  
 96 68.9 75.3 112.9#

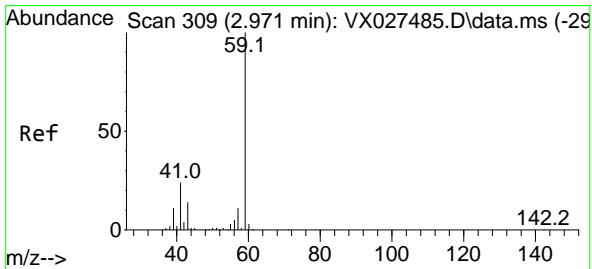
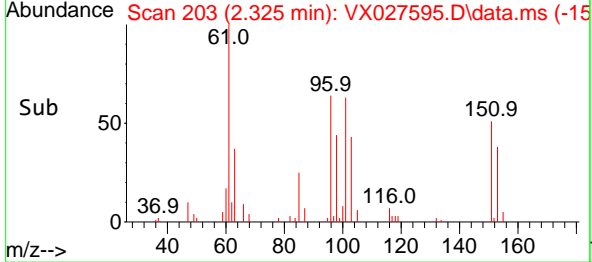
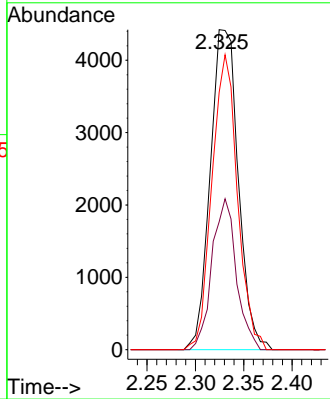
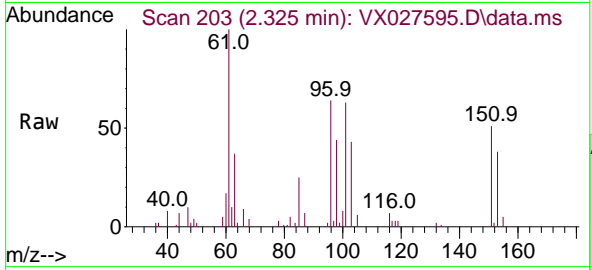




#9  
 1,1,2-Trichlorotrifluoroethane  
 Concen: 2.767 ug/l  
 RT: 2.325 min Scan# 203  
 Delta R.T. -0.000 min  
 Lab File: VX027595.D  
 Acq: 21 Mar 2022 18:47

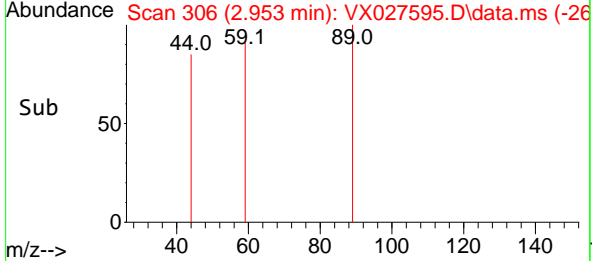
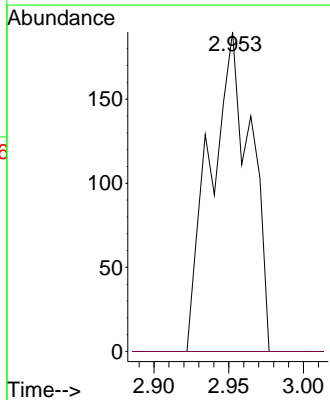
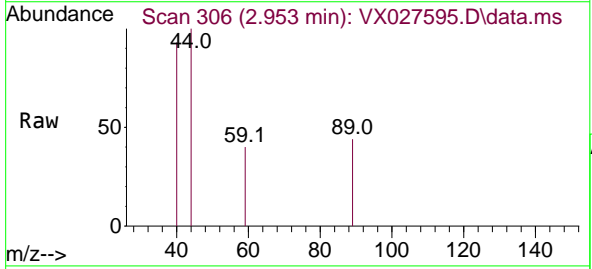
Instrument : MSVOA\_X  
 ClientSampleId : RE-139D2-20220316

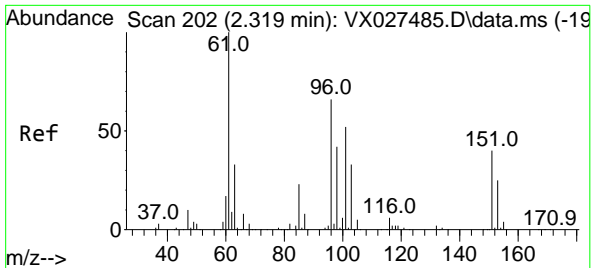
Tgt Ion	Resp	Lower	Upper
101	8915		
101	100		
85	40.8	33.5	50.3
151	83.8	61.8	92.6



#11  
 Tert butyl alcohol  
 Concen: 0.458 ug/l  
 RT: 2.953 min Scan# 306  
 Delta R.T. -0.018 min  
 Lab File: VX027595.D  
 Acq: 21 Mar 2022 18:47

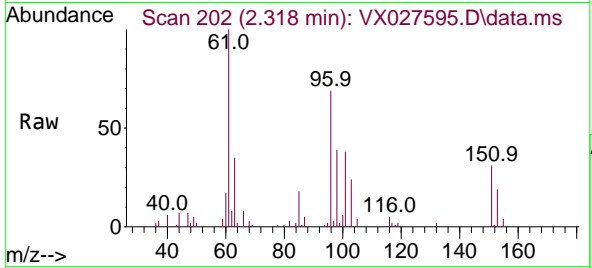
Tgt Ion	Resp	Lower	Upper
59	358		
59	100		
57	0.0	8.3	12.5



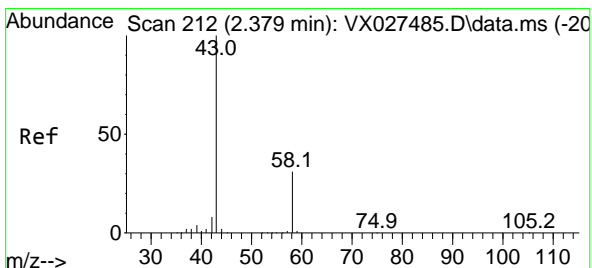
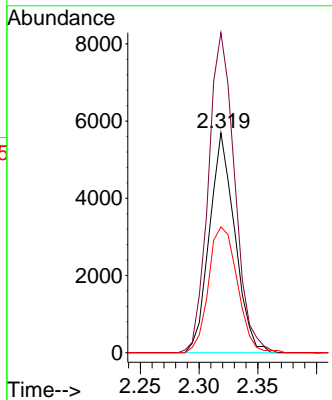
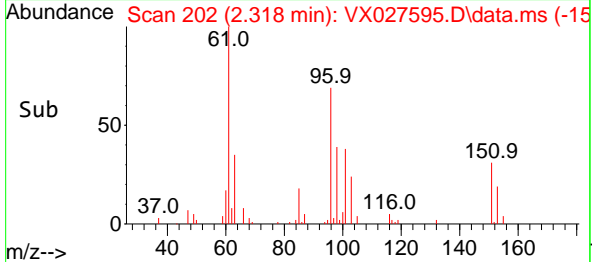


#12  
 1,1-Dichloroethene  
 Concen: 2.769 ug/l  
 RT: 2.318 min Scan# 20  
 Delta R.T. -0.000 min  
 Lab File: VX027595.D  
 Acq: 21 Mar 2022 18:47

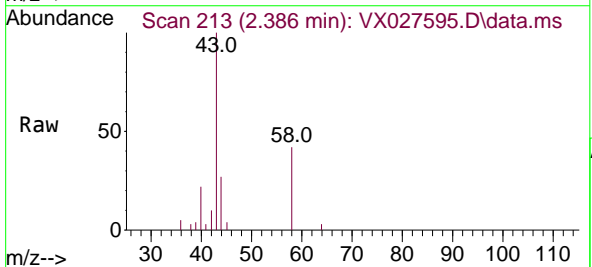
Instrument : MSVOA\_X  
 ClientSampleId : RE-139D2-20220316



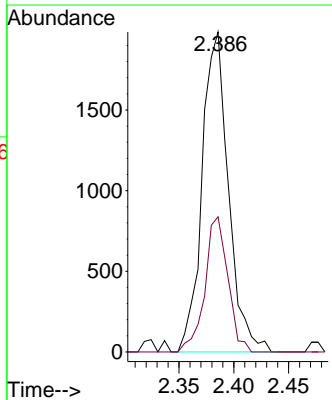
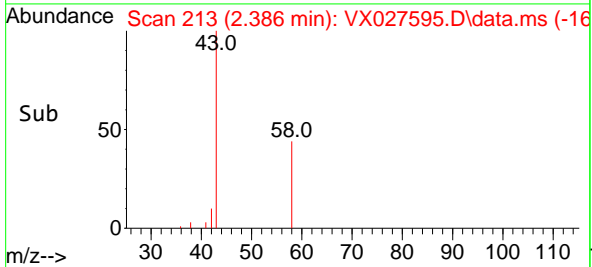
Tgt Ion: 96 Resp: 8559  
 Ion Ratio Lower Upper  
 96 100  
 61 145.5 124.6 187.0  
 98 57.2 51.0 76.4

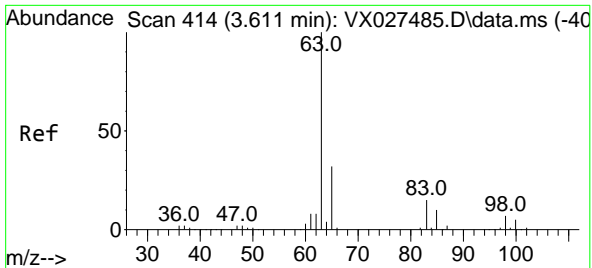


#16  
 Acetone  
 Concen: 1.984 ug/l  
 RT: 2.386 min Scan# 213  
 Delta R.T. 0.006 min  
 Lab File: VX027595.D  
 Acq: 21 Mar 2022 18:47



Tgt Ion: 43 Resp: 3317  
 Ion Ratio Lower Upper  
 43 100  
 58 42.2 28.8 43.2



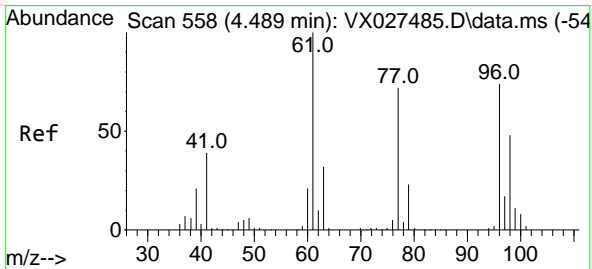
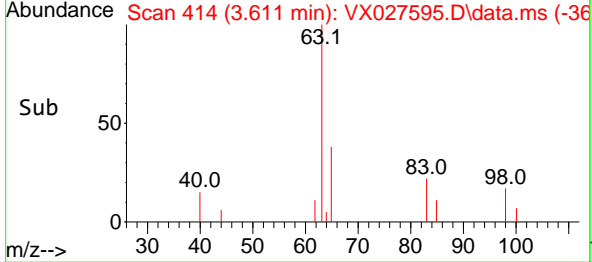
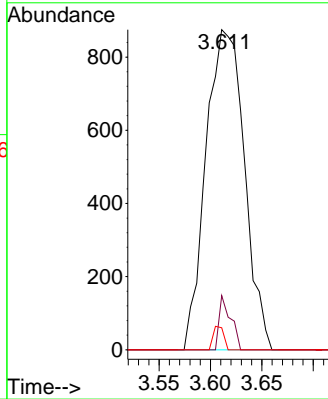
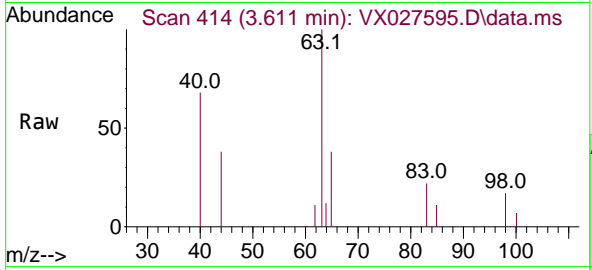


#24  
 1,1-Dichloroethane  
 Concen: 0.396 ug/l  
 RT: 3.611 min Scan# 411  
 Delta R.T. -0.000 min  
 Lab File: VX027595.D  
 Acq: 21 Mar 2022 18:47

Instrument : MSVOA\_X  
 ClientSampleId : RE-139D2-20220316

Tgt Ion: 63 Resp: 2274

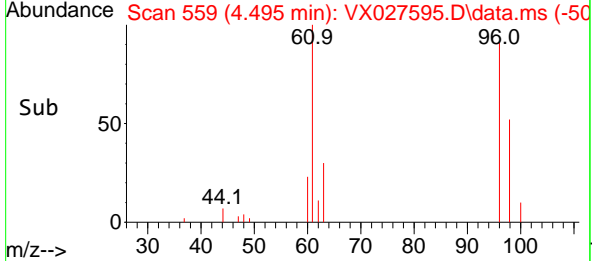
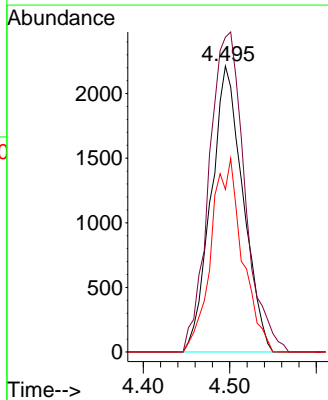
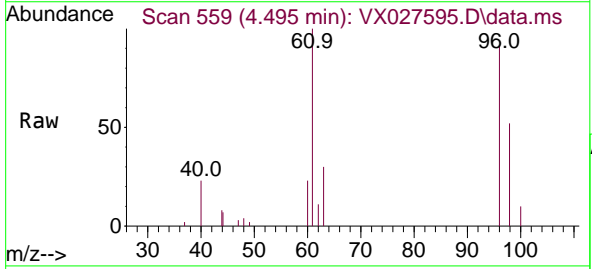
Ion	Ratio	Lower	Upper
63	100		
98	16.9	3.9	11.7#
100	6.9	2.4	7.2

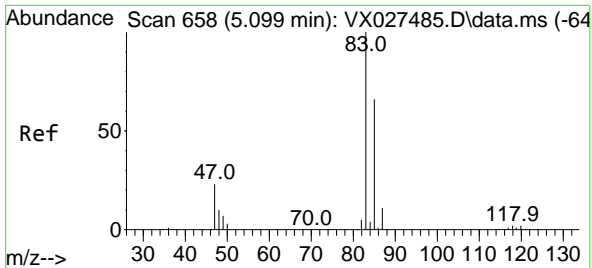


#27  
 cis-1,2-Dichloroethene  
 Concen: 1.487 ug/l  
 RT: 4.495 min Scan# 559  
 Delta R.T. 0.006 min  
 Lab File: VX027595.D  
 Acq: 21 Mar 2022 18:47

Tgt Ion: 96 Resp: 5687

Ion	Ratio	Lower	Upper
96	100		
61	124.6	0.0	283.8
98	66.2	0.0	129.8

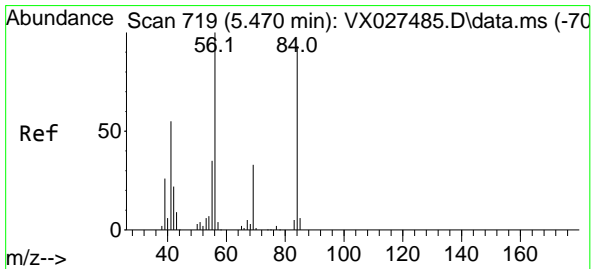
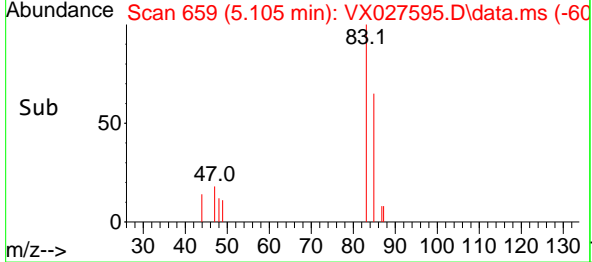
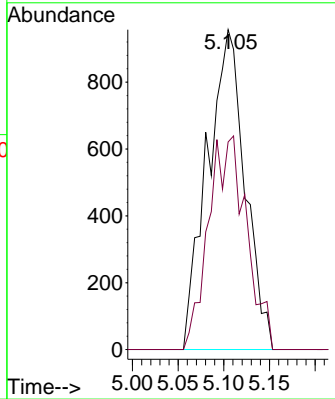
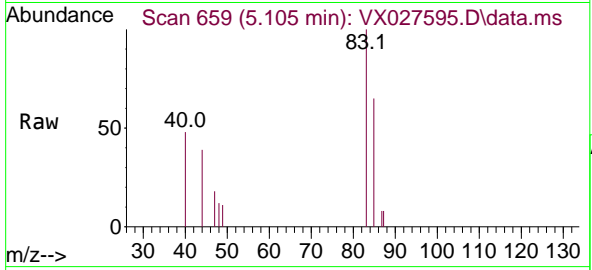




#30  
 Chloroform  
 Concen: 0.433 ug/l  
 RT: 5.105 min Scan# 61  
 Delta R.T. 0.006 min  
 Lab File: VX027595.D  
 Acq: 21 Mar 2022 18:47

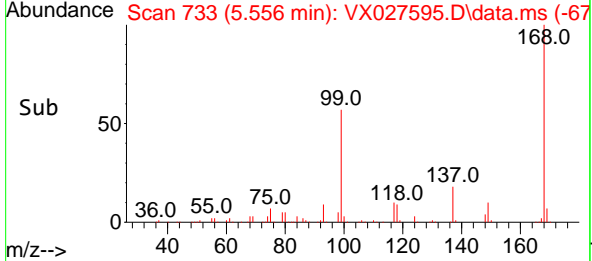
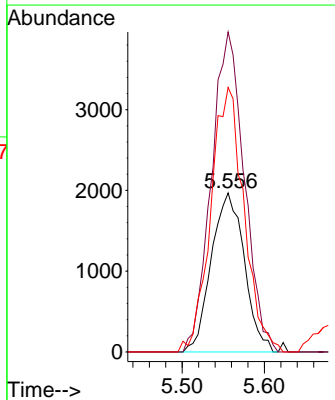
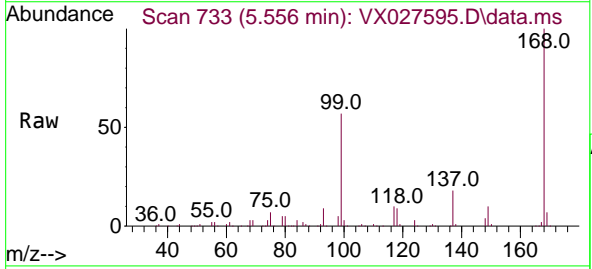
Instrument : MSVOA\_X  
 ClientSampleId : RE-139D2-20220316

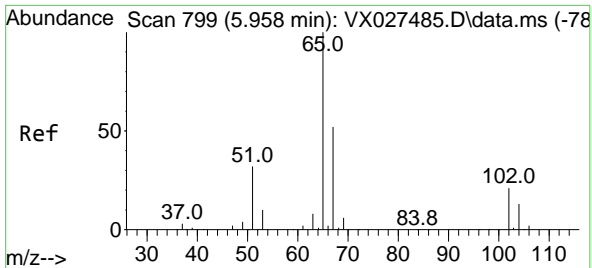
Tgt Ion: 83 Resp: 2747  
 Ion Ratio Lower Upper  
 83 100  
 85 64.9 52.7 79.1



#31  
 Cyclohexane  
 Concen: 1.080 ug/l  
 RT: 5.556 min Scan# 733  
 Delta R.T. 0.085 min  
 Lab File: VX027595.D  
 Acq: 21 Mar 2022 18:47

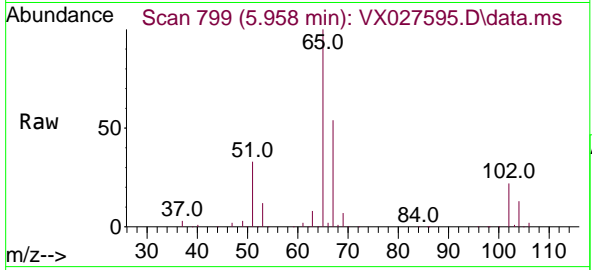
Tgt Ion: 56 Resp: 5497  
 Ion Ratio Lower Upper  
 56 100  
 69 201.1 26.7 40.1#  
 84 166.2 77.2 115.8#



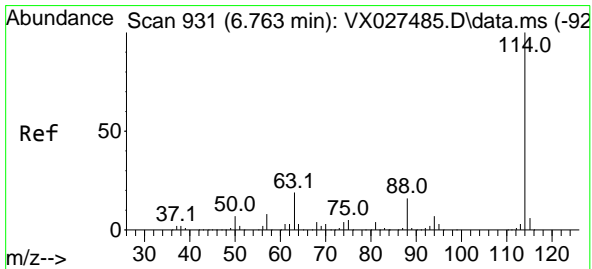
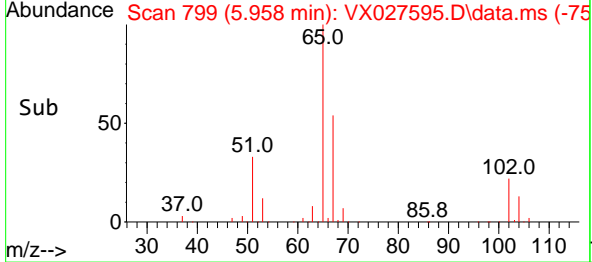
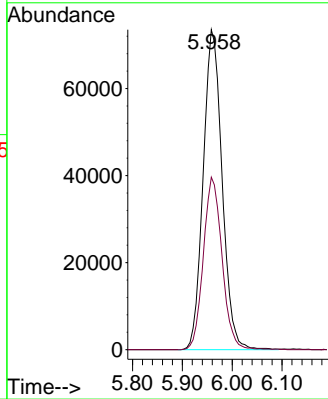


#33  
 1,2-Dichloroethane-d4  
 Concen: 47.277 ug/l  
 RT: 5.958 min Scan# 799  
 Delta R.T. -0.000 min  
 Lab File: VX027595.D  
 Acq: 21 Mar 2022 18:47

Instrument : MSVOA\_X  
 ClientSampleId : RE-139D2-20220316

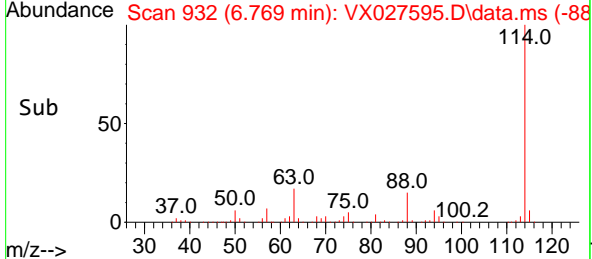
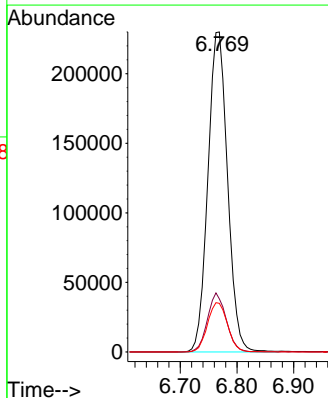
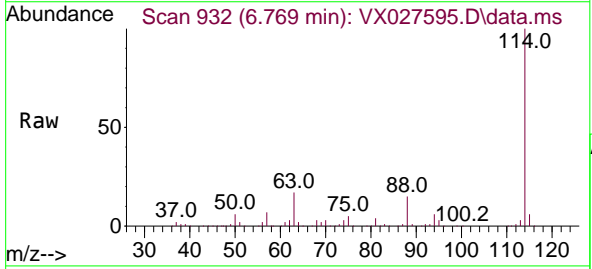


Tgt Ion: 65 Resp: 193870  
 Ion Ratio Lower Upper  
 65 100  
 67 53.3 0.0 107.4

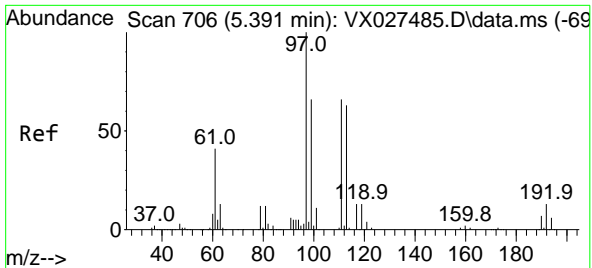


#34  
 1,4-Difluorobenzene  
 Concen: 50.000 ug/l  
 RT: 6.769 min Scan# 932  
 Delta R.T. 0.006 min  
 Lab File: VX027595.D  
 Acq: 21 Mar 2022 18:47

Tgt Ion: 114 Resp: 553296  
 Ion Ratio Lower Upper  
 114 100  
 63 16.6 0.0 36.8  
 88 15.2 0.0 32.4



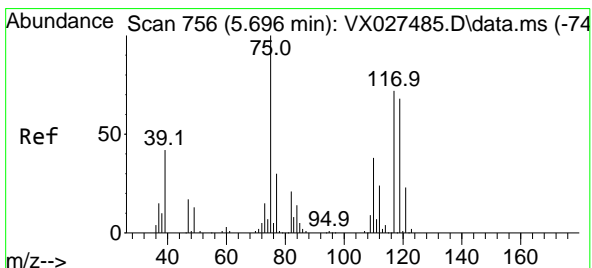
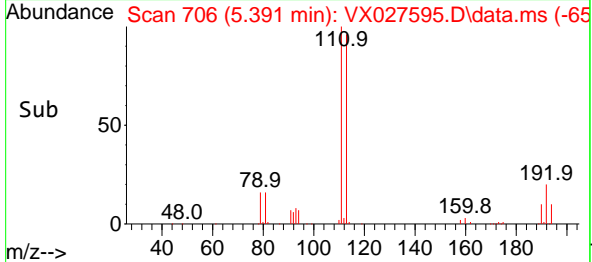
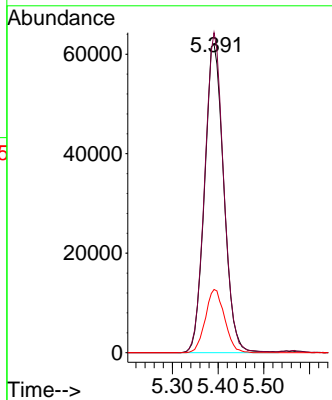
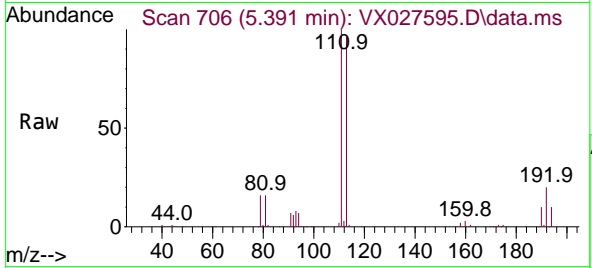




#35  
 Dibromofluoromethane  
 Concen: 50.847 ug/l  
 RT: 5.391 min Scan# 706  
 Delta R.T. -0.000 min  
 Lab File: VX027595.D  
 Acq: 21 Mar 2022 18:47

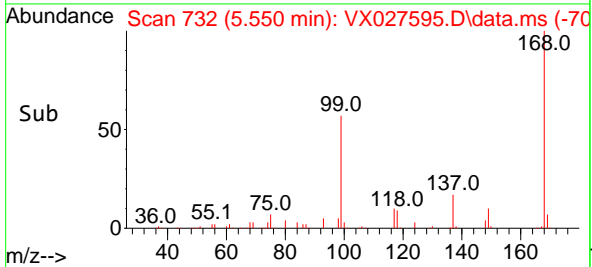
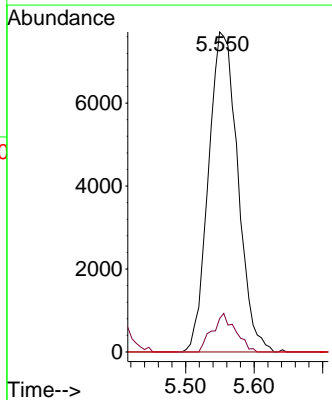
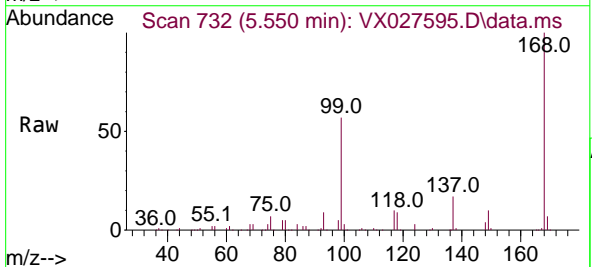
Instrument : MSVOA\_X  
 ClientSampleId : RE-139D2-20220316

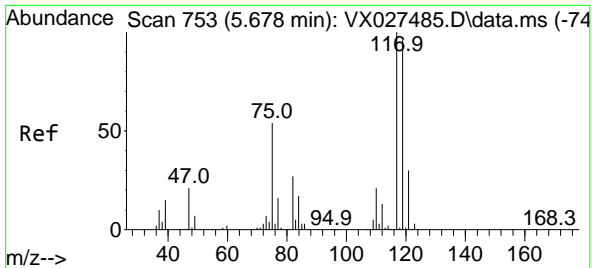
Tgt Ion:	113	Resp:	181006
Ion Ratio	Lower	Upper	
113	100		
111	102.1	82.8	124.2
192	20.4	16.9	25.3



#36  
 1,1-Dichloropropene  
 Concen: 4.714 ug/l  
 RT: 5.550 min Scan# 732  
 Delta R.T. -0.146 min  
 Lab File: VX027595.D  
 Acq: 21 Mar 2022 18:47

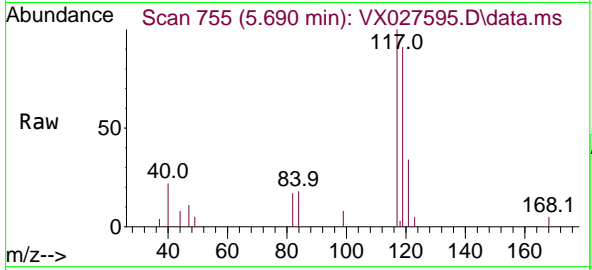
Tgt Ion:	75	Resp:	22930
Ion Ratio	Lower	Upper	
75	100		
110	9.5	18.3	54.8#
77	0.0	24.8	37.2#



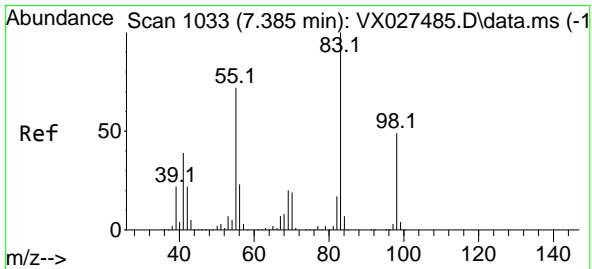
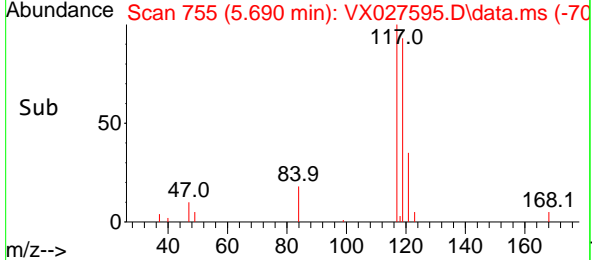
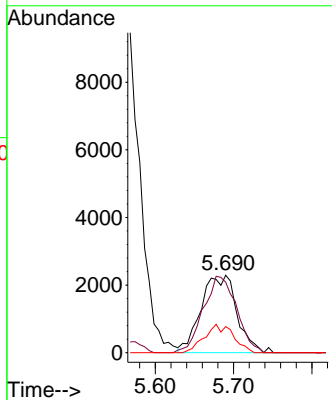


#38  
 Carbon Tetrachloride  
 Concen: 1.313 ug/l  
 RT: 5.690 min Scan# 711  
 Delta R.T. 0.012 min  
 Lab File: VX027595.D  
 Acq: 21 Mar 2022 18:47

Instrument : MSVOA\_X  
 ClientSampleId : RE-139D2-20220316

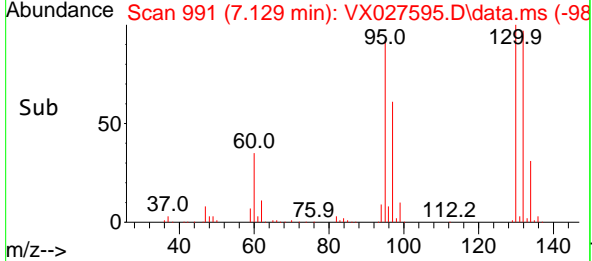
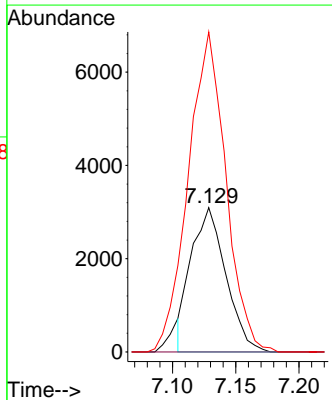
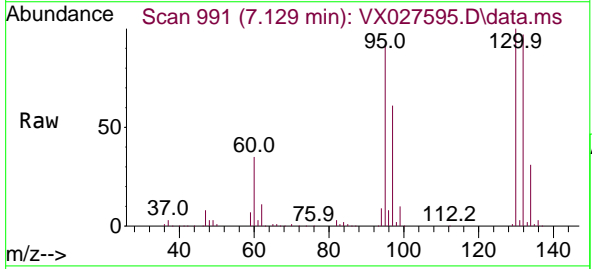


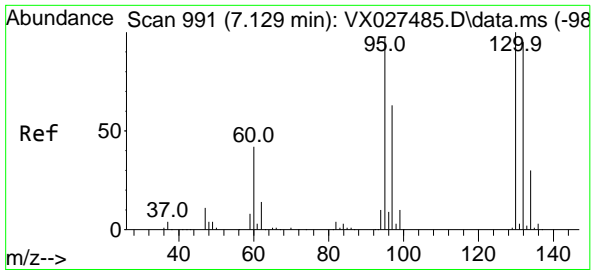
Tgt Ion:117 Resp: 7306  
 Ion Ratio Lower Upper  
 117 100  
 119 91.0 77.3 115.9  
 121 33.8 24.2 36.2



#39  
 Methylcyclohexane  
 Concen: 0.966 ug/l  
 RT: 7.129 min Scan# 991  
 Delta R.T. -0.256 min  
 Lab File: VX027595.D  
 Acq: 21 Mar 2022 18:47

Tgt Ion: 83 Resp: 5910  
 Ion Ratio Lower Upper  
 83 100  
 55 0.0 54.6 81.8#  
 98 221.6 37.4 56.2#

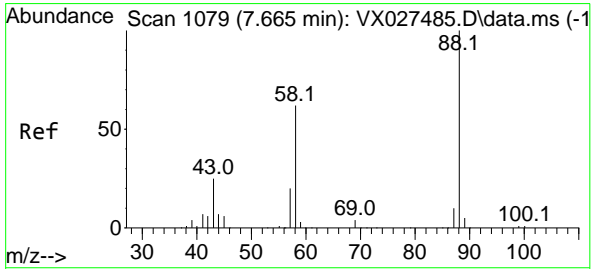
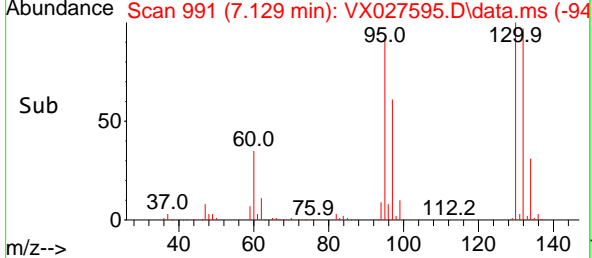
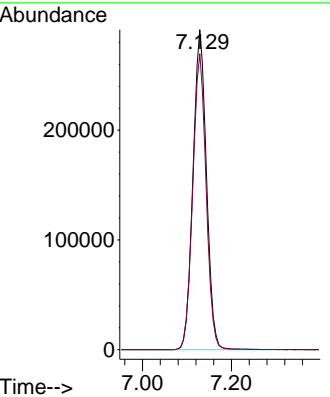
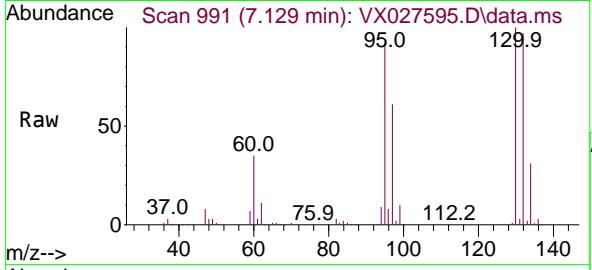




#44  
 Trichloroethene  
 Concen: 145.293 ug/l  
 RT: 7.129 min Scan# 991  
 Delta R.T. -0.000 min  
 Lab File: VX027595.D  
 Acq: 21 Mar 2022 18:47

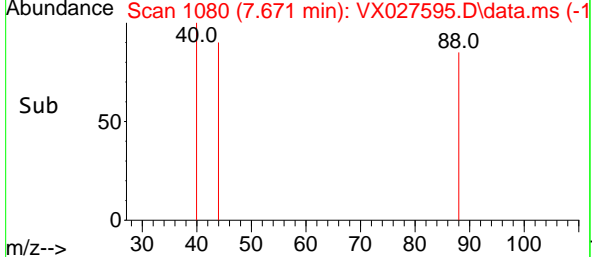
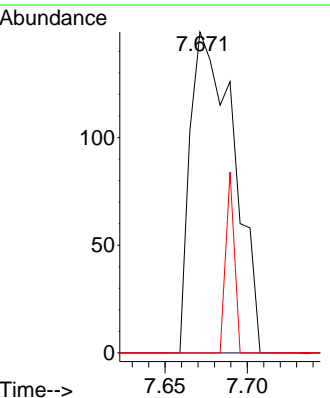
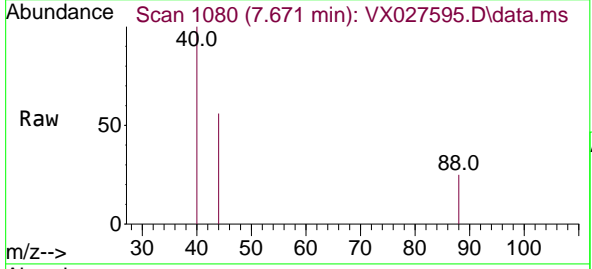
Instrument : MSVOA\_X  
 ClientSampleId : RE-139D2-20220316

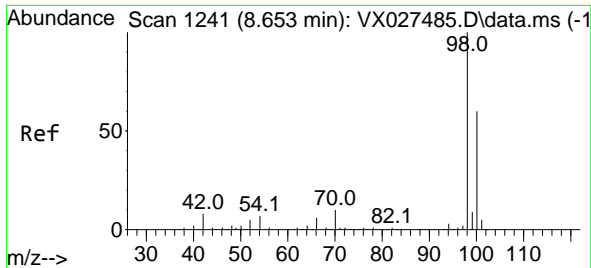
Tgt Ion:130 Resp: 615563  
 Ion Ratio Lower Upper  
 130 100  
 95 92.5 0.0 188.8



#49  
 1,4-Dioxane  
 Concen: 2.753 ug/l  
 RT: 7.671 min Scan# 1080  
 Delta R.T. 0.006 min  
 Lab File: VX027595.D  
 Acq: 21 Mar 2022 18:47

Tgt Ion: 88 Resp: 273  
 Ion Ratio Lower Upper  
 88 100  
 43 0.0 21.9 32.9#  
 58 11.4 53.7 80.5#

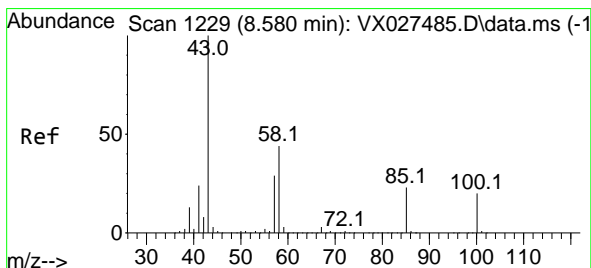
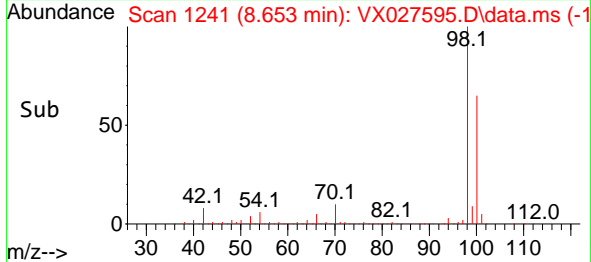
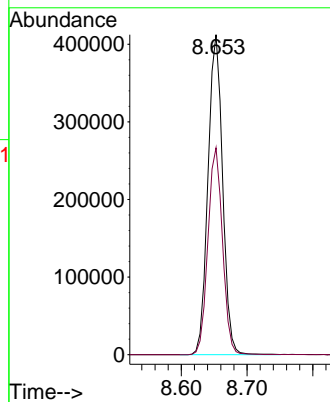
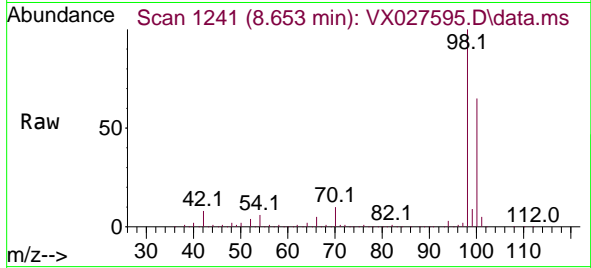




#50  
 Toluene-d8  
 Concen: 47.332 ug/l  
 RT: 8.653 min Scan# 1241  
 Delta R.T. -0.000 min  
 Lab File: VX027595.D  
 Acq: 21 Mar 2022 18:47

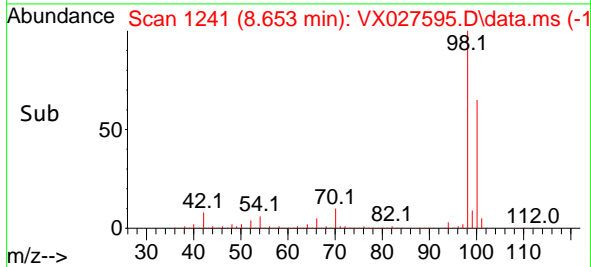
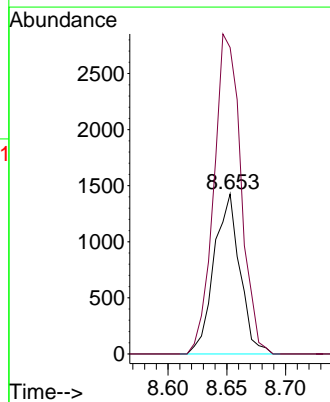
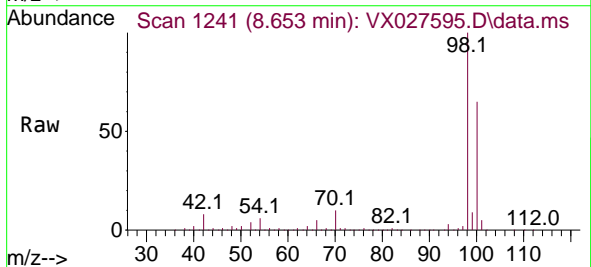
Instrument : MSVOA\_X  
 ClientSampleId : RE-139D2-20220316

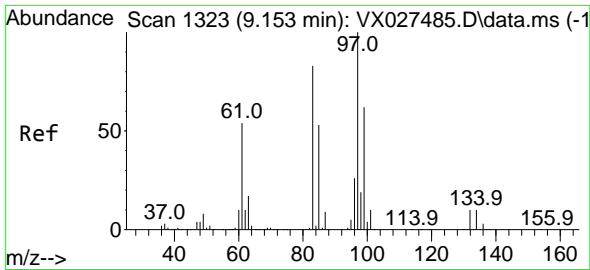
Tgt Ion: 98 Resp: 637599  
 Ion Ratio Lower Upper  
 98 100  
 100 64.5 52.6 78.8



#51  
 4-Methyl-2-Pentanone  
 Concen: 0.439 ug/l  
 RT: 8.653 min Scan# 1241  
 Delta R.T. 0.073 min  
 Lab File: VX027595.D  
 Acq: 21 Mar 2022 18:47

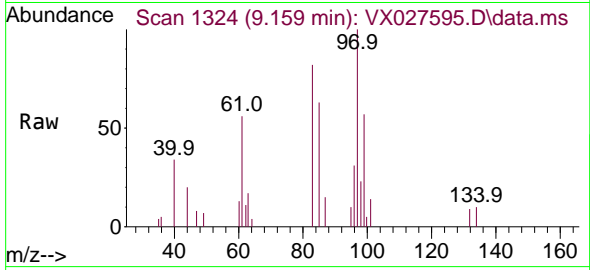
Tgt Ion: 43 Resp: 2188  
 Ion Ratio Lower Upper  
 43 100  
 58 209.2 36.1 54.1#





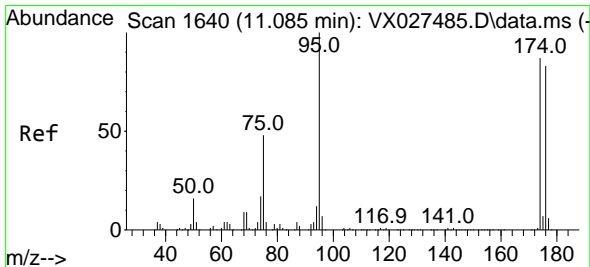
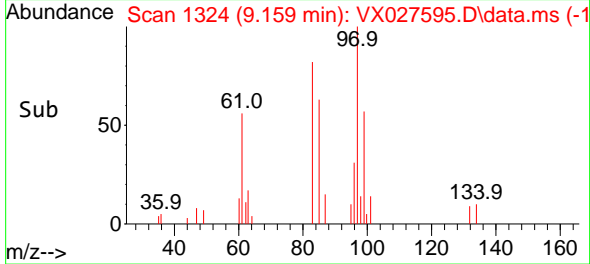
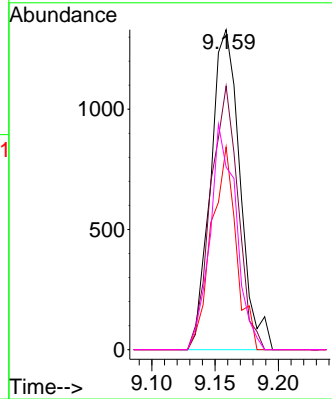
#55  
 1,1,2-Trichloroethane  
 Concen: 0.563 ug/l  
 RT: 9.159 min Scan# 11  
 Delta R.T. 0.006 min  
 Lab File: VX027595.D  
 Acq: 21 Mar 2022 18:47

Instrument :  
 MSVOA\_X  
 ClientSampleId :  
 RE-139D2-20220316

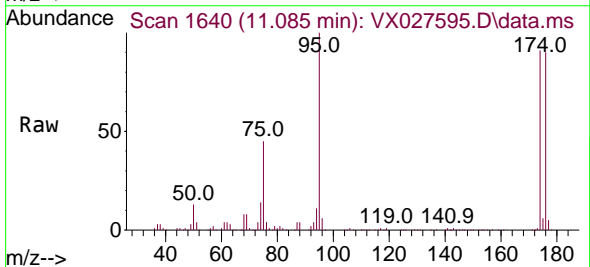


Tgt Ion: 97 Resp: 2145

Ion	Ratio	Lower	Upper
97	100		
83	82.3	66.2	99.4
85	63.3	42.9	64.3
99	57.0	49.0	73.6

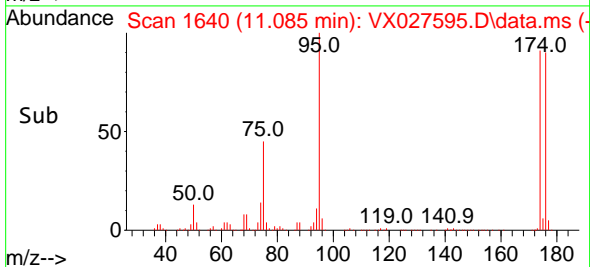
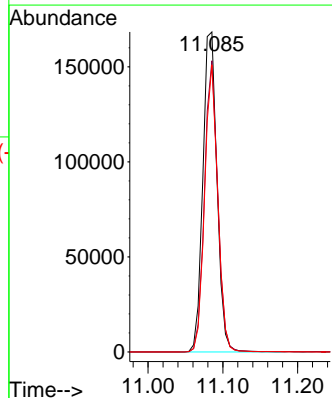


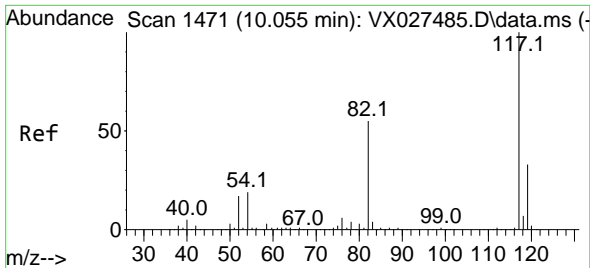
#62  
 4-Bromofluorobenzene  
 Concen: 44.697 ug/l  
 RT: 11.085 min Scan# 1640  
 Delta R.T. -0.000 min  
 Lab File: VX027595.D  
 Acq: 21 Mar 2022 18:47



Tgt Ion: 95 Resp: 221305

Ion	Ratio	Lower	Upper
95	100		
174	85.6	0.0	163.0
176	83.3	0.0	155.0



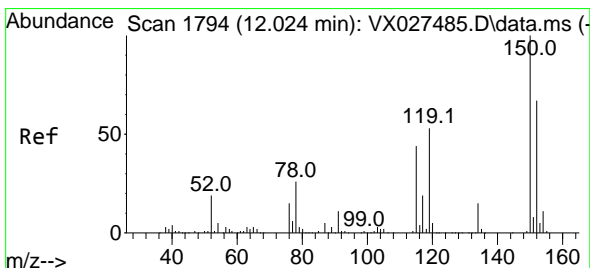
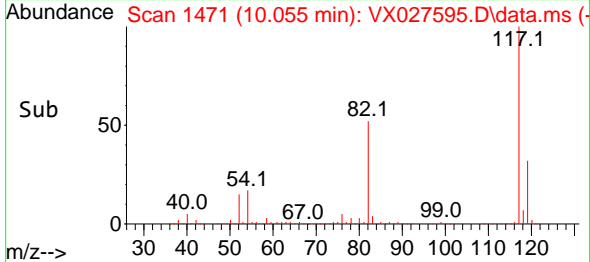
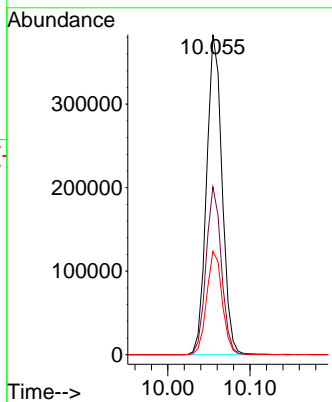
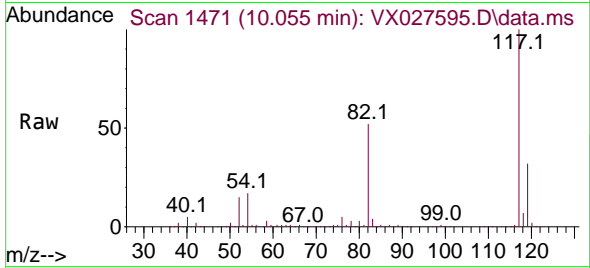


#63  
 Chlorobenzene-d5  
 Concen: 50.000 ug/l  
 RT: 10.055 min Scan# 1471  
 Delta R.T. -0.000 min  
 Lab File: VX027595.D  
 Acq: 21 Mar 2022 18:47

Instrument : MSVOA\_X  
 ClientSampleId : RE-139D2-20220316

Tgt Ion:117 Resp: 501346

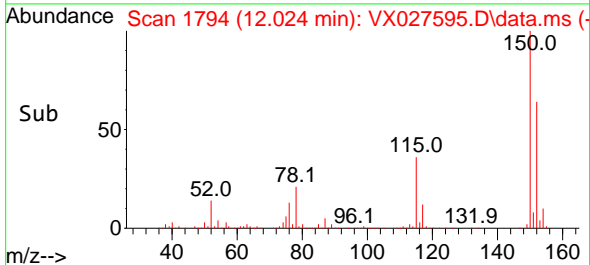
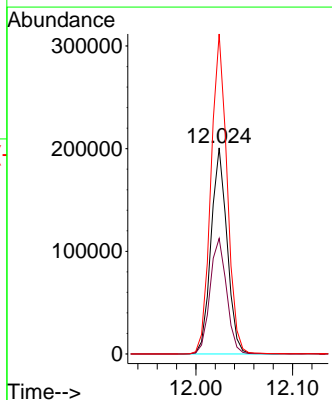
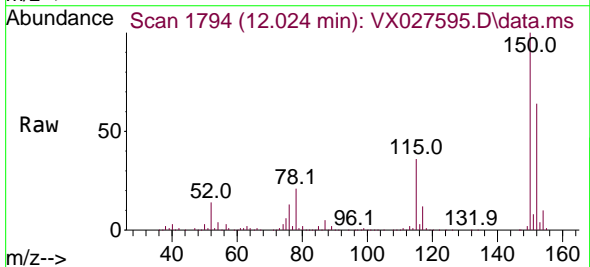
Ion	Ratio	Lower	Upper
117	100		
82	52.4	41.8	62.8
119	32.3	24.8	37.2

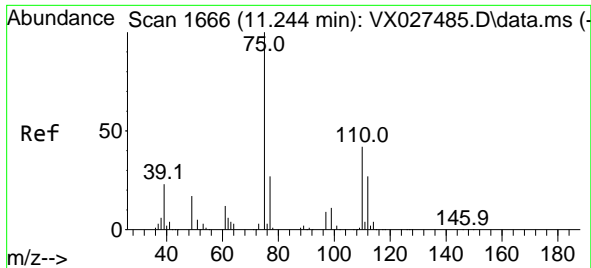


#72  
 1,4-Dichlorobenzene-d4  
 Concen: 50.000 ug/l  
 RT: 12.024 min Scan# 1794  
 Delta R.T. -0.000 min  
 Lab File: VX027595.D  
 Acq: 21 Mar 2022 18:47

Tgt Ion:152 Resp: 231374

Ion	Ratio	Lower	Upper
152	100		
115	57.9	37.5	112.7
150	156.2	0.0	338.2

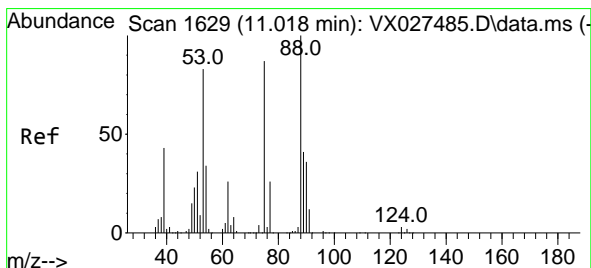
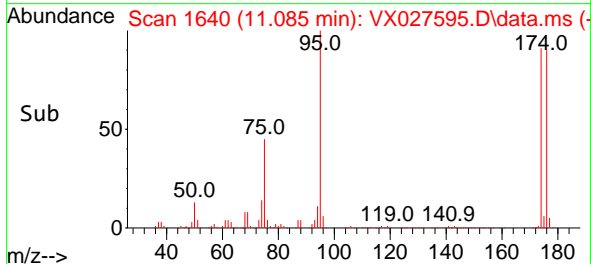
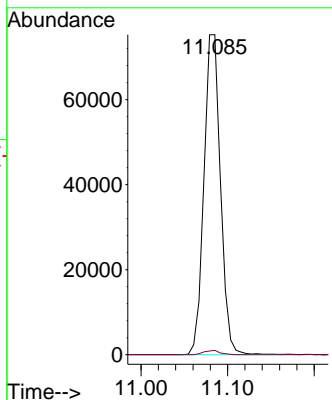
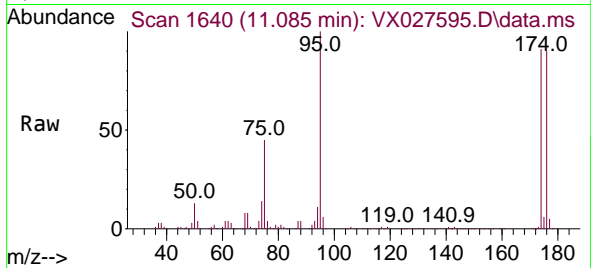




#76  
 1,2,3-Trichloropropane  
 Concen: 20.634 ug/l  
 RT: 11.085 min Scan# 1640  
 Delta R.T. -0.159 min  
 Lab File: VX027595.D  
 Acq: 21 Mar 2022 18:47

Instrument : MSVOA\_X  
 ClientSampleId : RE-139D2-20220316

Tgt Ion: 75 Resp: 99860  
 Ion Ratio Lower Upper  
 75 100  
 77 1.3 19.4 58.2#



#81  
 trans-1,4-Dichloro-2-butene  
 Concen: 62.666 ug/l  
 RT: 11.085 min Scan# 1640  
 Delta R.T. 0.067 min  
 Lab File: VX027595.D  
 Acq: 21 Mar 2022 18:47

Tgt Ion: 75 Resp: 99860  
 Ion Ratio Lower Upper  
 75 100  
 53 0.0 69.0 103.4#  
 89 0.0 37.0 55.6#

