

Data Path : Z:\voasrv\HPCHEM1\MSVOA\_X\Data\VX032125\  
 Data File : VX045393.D  
 Acq On : 21 Mar 2025 17:11  
 Operator : JC/MD  
 Sample : Q1582-15  
 Misc : 5.0mL/MSVOA\_X/WATER  
 ALS Vial : 20 Sample Multiplier: 1

Instrument :  
 MSVOA\_X  
 ClientSampleId :  
 DUP06-20250314

Quant Time: Mar 21 23:18:25 2025  
 Quant Method : Z:\voasrv\HPCHEM1\MSVOA\_X\Method\82X022825W.M  
 Quant Title : SW846 8260  
 QLast Update : Fri Feb 28 06:45:16 2025  
 Response via : Initial Calibration

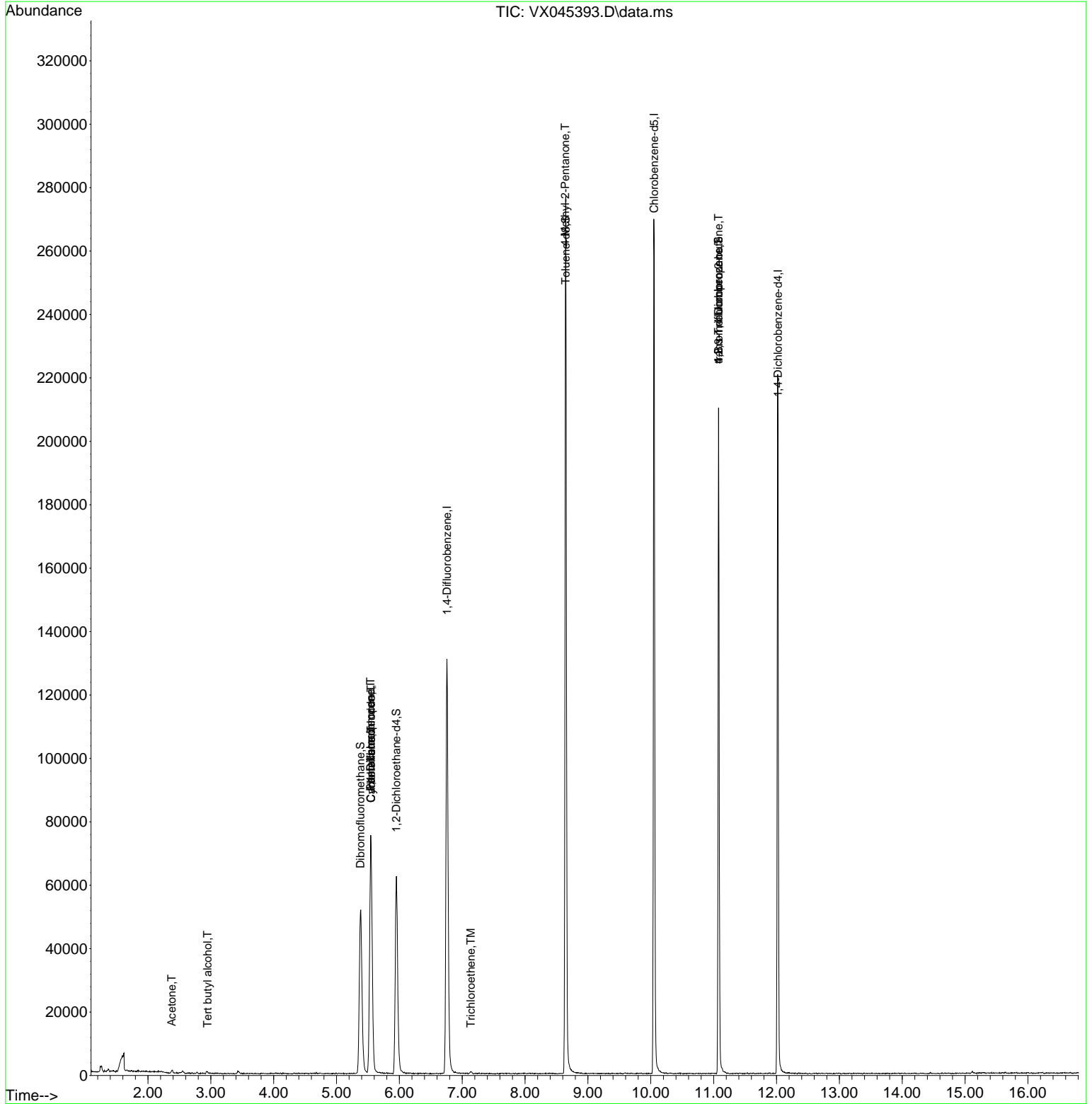
Compound	R.T.	QIon	Response	Conc	Units	Dev(Min)
-----						
Internal Standards						
1) Pentafluorobenzene	5.544	168	64262	50.000	ug/l	0.00
34) 1,4-Difluorobenzene	6.757	114	125895	50.000	ug/l	0.00
63) Chlorobenzene-d5	10.055	117	116324	50.000	ug/l	0.00
72) 1,4-Dichlorobenzene-d4	12.024	152	41891	50.000	ug/l	0.00
System Monitoring Compounds						
33) 1,2-Dichloroethane-d4	5.952	65	59975	58.674	ug/l	0.00
Spiked Amount	50.000	Range 74 - 125	Recovery	=	117.340%	
35) Dibromofluoromethane	5.379	113	45249	53.751	ug/l	0.00
Spiked Amount	50.000	Range 75 - 124	Recovery	=	107.500%	
50) Toluene-d8	8.647	98	158139	51.816	ug/l	0.00
Spiked Amount	50.000	Range 86 - 113	Recovery	=	103.640%	
62) 4-Bromofluorobenzene	11.079	95	52856	52.265	ug/l	0.00
Spiked Amount	50.000	Range 77 - 121	Recovery	=	104.520%	
Target Compounds						
						Qvalue
11) Tert butyl alcohol	2.947	59	116	0.599	ug/l #	73
16) Acetone	2.380	43	923	1.946	ug/l #	88
31) Cyclohexane	5.550	56	1782	1.281	ug/l #	18
36) 1,1-Dichloropropene	5.544	75	6157	5.333	ug/l #	51
38) Carbon Tetrachloride	5.550	117	7259	6.193	ug/l #	15
44) Trichloroethene	7.135	130	325	0.380	ug/l	62
51) 4-Methyl-2-Pentanone	8.641	43	948	0.642	ug/l #	1
76) 1,2,3-Trichloropropane	11.079	75	29717	30.478	ug/l #	36
81) trans-1,4-Dichloro-2-b...	11.079	75	29717	104.303	ug/l #	6
-----						

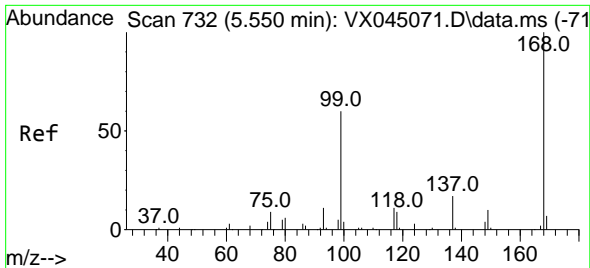
(#) = qualifier out of range (m) = manual integration (+) = signals summed

Data Path : Z:\voasrv\HPCHEM1\MSVOA\_X\Data\VX032125\  
 Data File : VX045393.D  
 Acq On : 21 Mar 2025 17:11  
 Operator : JC/MD  
 Sample : Q1582-15  
 Misc : 5.0mL/MSVOA\_X/WATER  
 ALS Vial : 20 Sample Multiplier: 1

**Instrument :**  
 MSVOA\_X  
**ClientSampleId :**  
 DUP06-20250314

Quant Time: Mar 21 23:18:25 2025  
 Quant Method : Z:\voasrv\HPCHEM1\MSVOA\_X\Method\82X022825W.M  
 Quant Title : SW846 8260  
 QLast Update : Fri Feb 28 06:45:16 2025  
 Response via : Initial Calibration

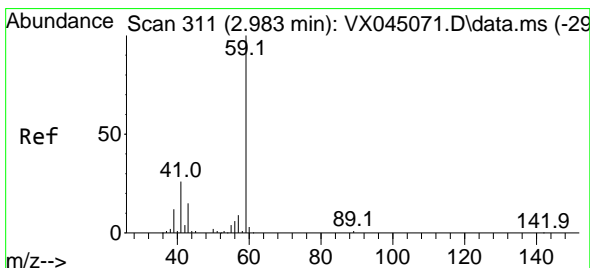
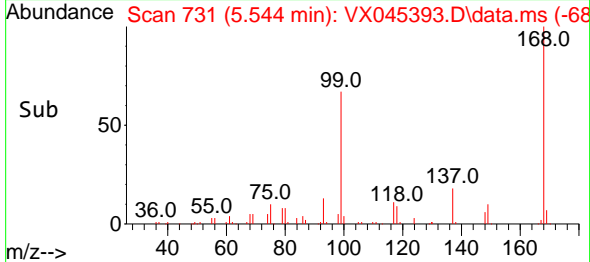
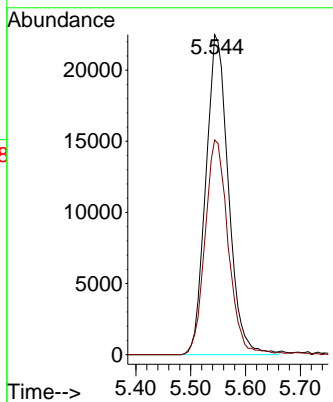
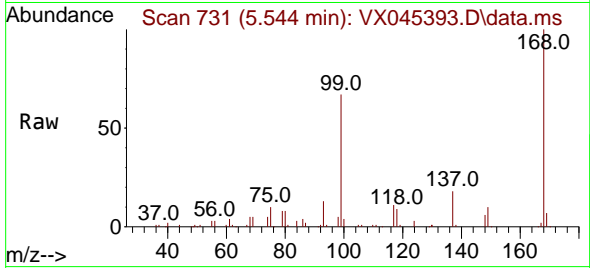




#1  
 Pentafluorobenzene  
 Concen: 50.000 ug/l  
 RT: 5.544 min Scan# 71  
 Delta R.T. -0.006 min  
 Lab File: VX045393.D  
 Acq: 21 Mar 2025 17:11

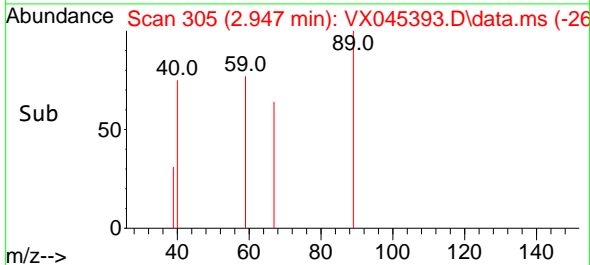
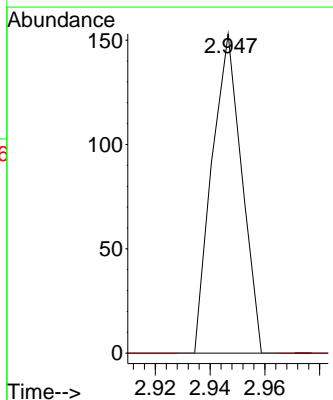
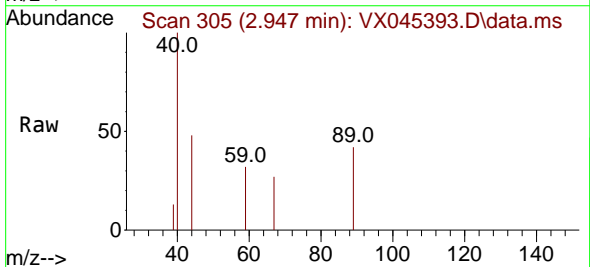
Instrument :  
 MSVOA\_X  
 ClientSampleId :  
 DUP06-20250314

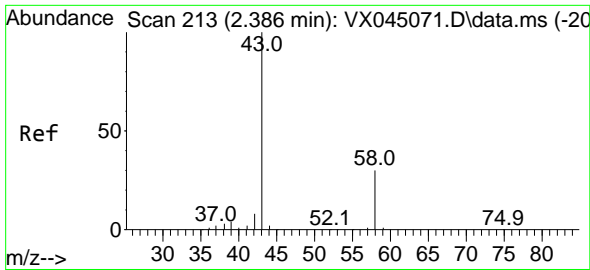
Tgt Ion:168 Resp: 64262  
 Ion Ratio Lower Upper  
 168 100  
 99 67.1 48.2 72.4



#11  
 Tert butyl alcohol  
 Concen: 0.599 ug/l  
 RT: 2.947 min Scan# 305  
 Delta R.T. -0.037 min  
 Lab File: VX045393.D  
 Acq: 21 Mar 2025 17:11

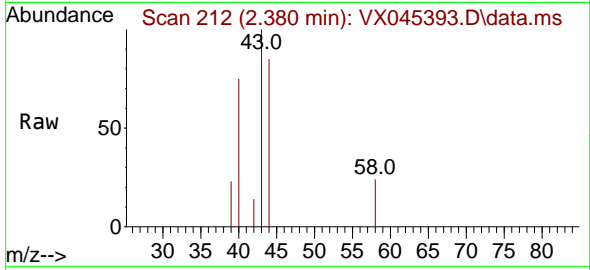
Tgt Ion: 59 Resp: 116  
 Ion Ratio Lower Upper  
 59 100  
 57 0.0 7.8 11.8#



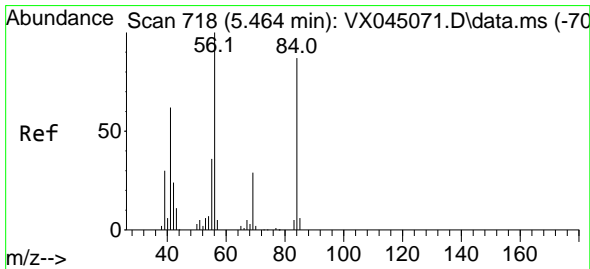
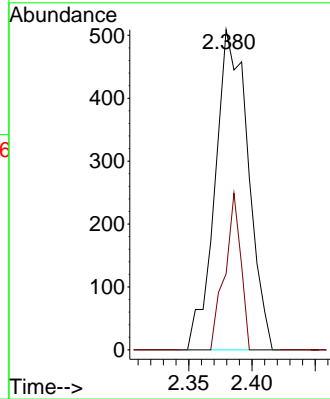
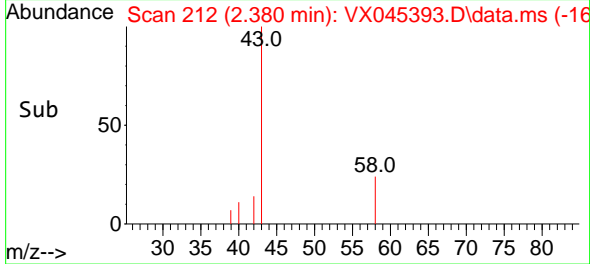


#16  
 Acetone  
 Concen: 1.946 ug/l  
 RT: 2.380 min Scan# 212  
 Delta R.T. -0.006 min  
 Lab File: VX045393.D  
 Acq: 21 Mar 2025 17:11

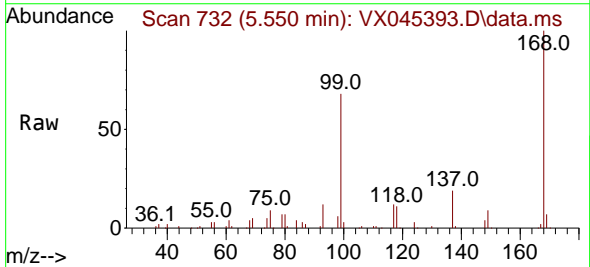
Instrument : MSVOA\_X  
 ClientSampleId : DUP06-20250314



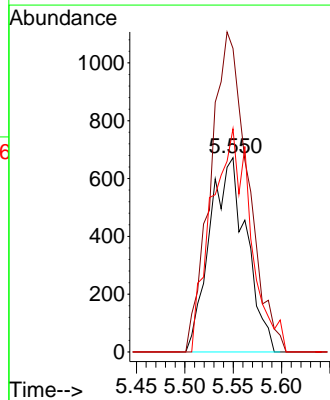
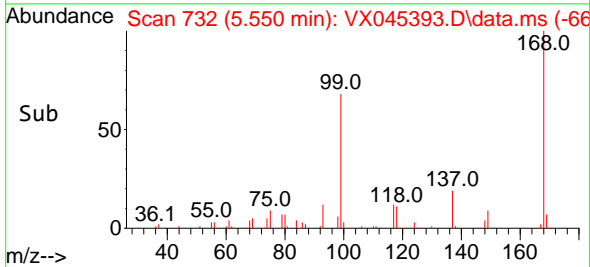
Tgt Ion: 43 Resp: 923  
 Ion Ratio Lower Upper  
 43 100  
 58 23.8 24.2 36.4#

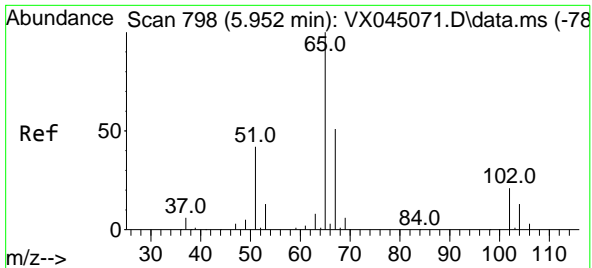


#31  
 Cyclohexane  
 Concen: 1.281 ug/l  
 RT: 5.550 min Scan# 732  
 Delta R.T. 0.085 min  
 Lab File: VX045393.D  
 Acq: 21 Mar 2025 17:11



Tgt Ion: 56 Resp: 1782  
 Ion Ratio Lower Upper  
 56 100  
 69 156.3 23.4 35.2#  
 84 114.9 69.4 104.2#

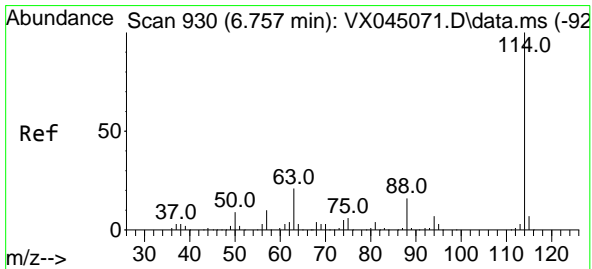
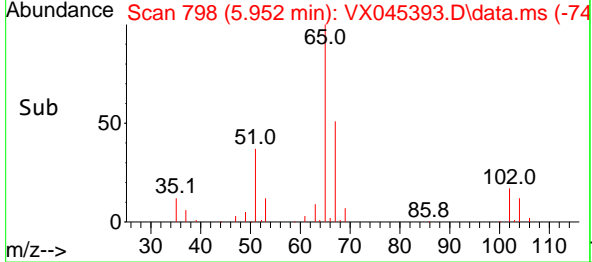
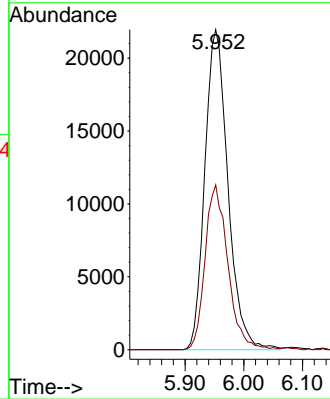
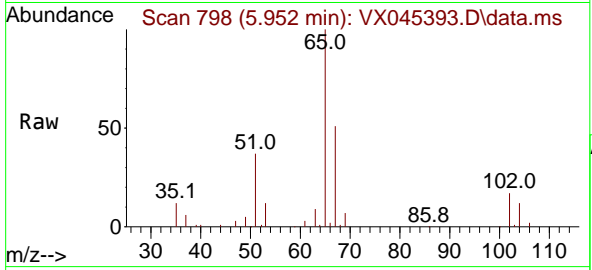




#33  
 1,2-Dichloroethane-d4  
 Concen: 58.674 ug/l  
 RT: 5.952 min Scan# 798  
 Delta R.T. -0.000 min  
 Lab File: VX045393.D  
 Acq: 21 Mar 2025 17:11

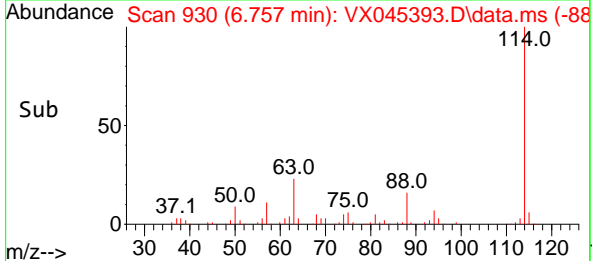
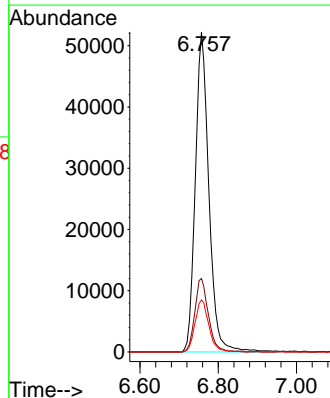
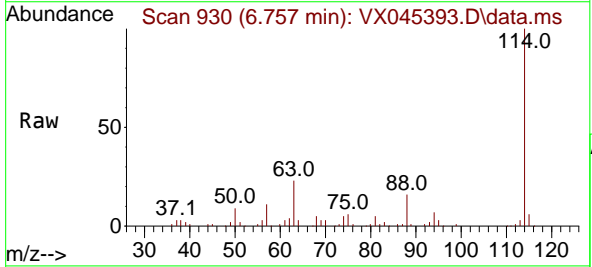
Instrument : MSVOA\_X  
 ClientSampleId : DUP06-20250314

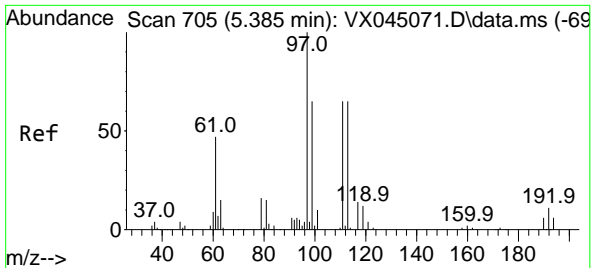
Tgt Ion: 65 Resp: 59975  
 Ion Ratio Lower Upper  
 65 100  
 67 50.8 0.0 106.2



#34  
 1,4-Difluorobenzene  
 Concen: 50.000 ug/l  
 RT: 6.757 min Scan# 930  
 Delta R.T. -0.000 min  
 Lab File: VX045393.D  
 Acq: 21 Mar 2025 17:11

Tgt Ion: 114 Resp: 125895  
 Ion Ratio Lower Upper  
 114 100  
 63 22.9 0.0 41.8  
 88 16.2 0.0 32.8

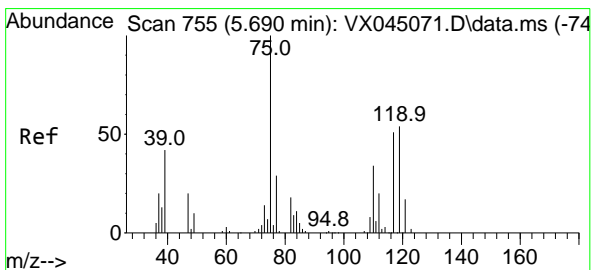
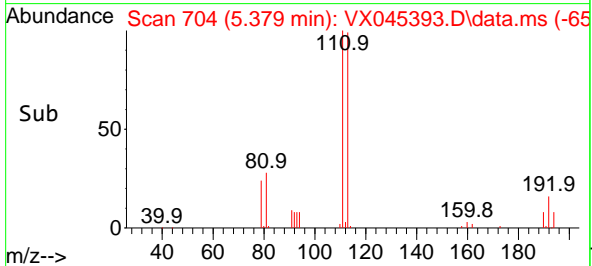
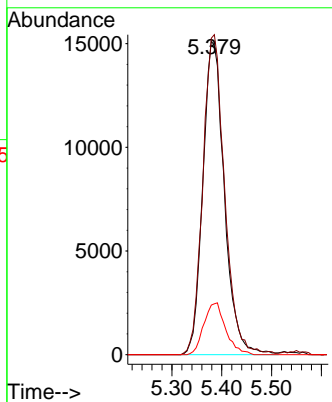
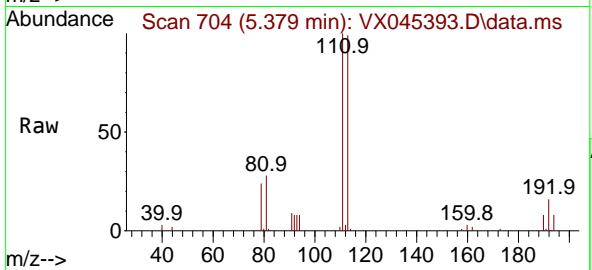




#35  
 Dibromofluoromethane  
 Concen: 53.751 ug/l  
 RT: 5.379 min Scan# 704  
 Delta R.T. -0.006 min  
 Lab File: VX045393.D  
 Acq: 21 Mar 2025 17:11

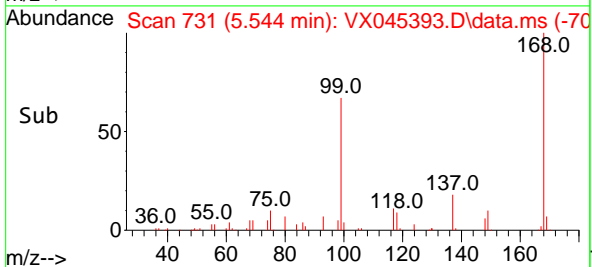
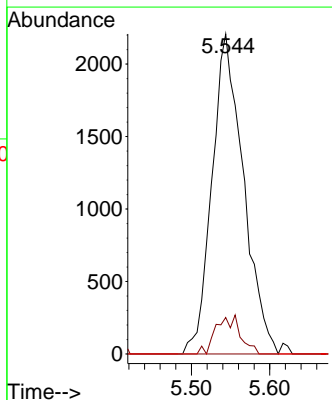
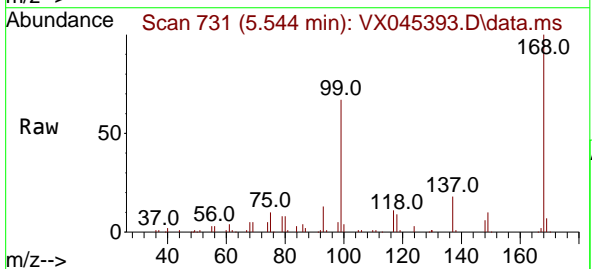
Instrument : MSVOA\_X  
 ClientSampleId : DUP06-20250314

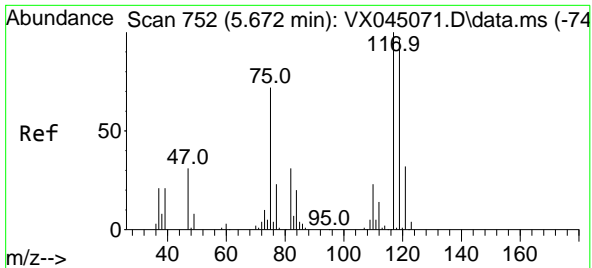
Tgt Ion	Resp	Lower	Upper
113	100		
111	103.5	81.8	122.6
192	16.7	14.3	21.5



#36  
 1,1-Dichloropropene  
 Concen: 5.333 ug/l  
 RT: 5.544 min Scan# 731  
 Delta R.T. -0.146 min  
 Lab File: VX045393.D  
 Acq: 21 Mar 2025 17:11

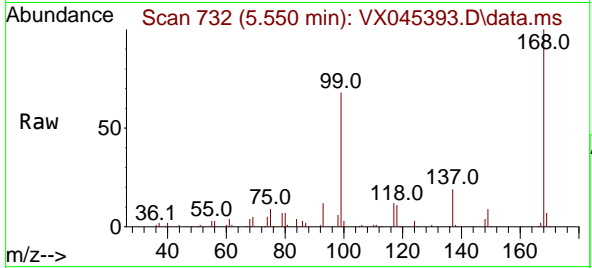
Tgt Ion	Resp	Lower	Upper
75	100		
110	9.4	16.9	50.6#
77	0.0	24.5	36.7#



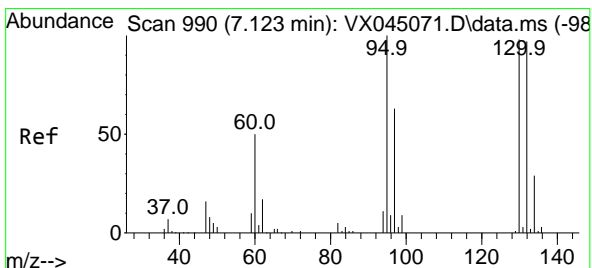
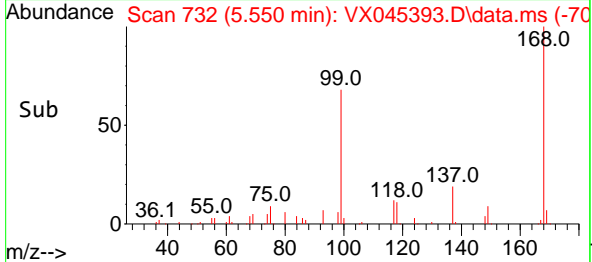
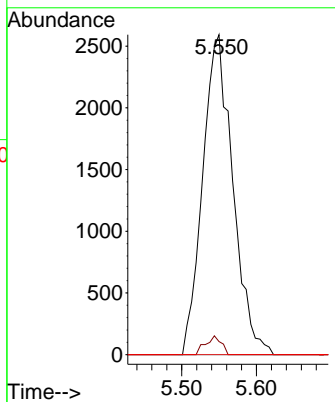


#38  
 Carbon Tetrachloride  
 Concen: 6.193 ug/l  
 RT: 5.550 min Scan# 711  
 Delta R.T. -0.122 min  
 Lab File: VX045393.D  
 Acq: 21 Mar 2025 17:11

Instrument : MSVOA\_X  
 ClientSampleId : DUP06-20250314

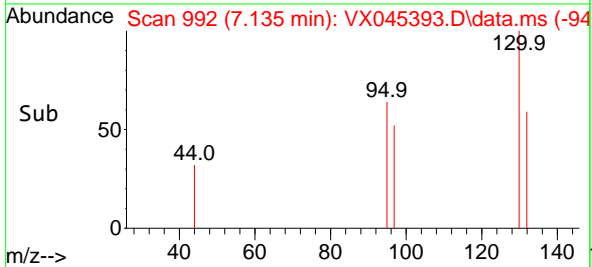
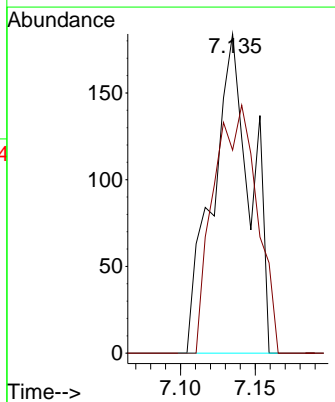
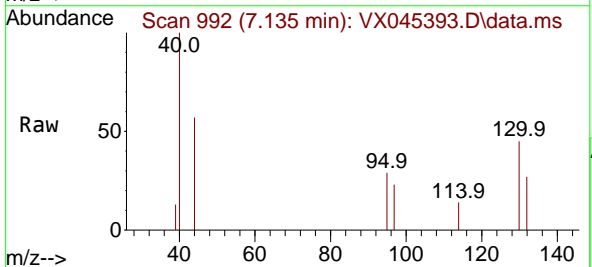


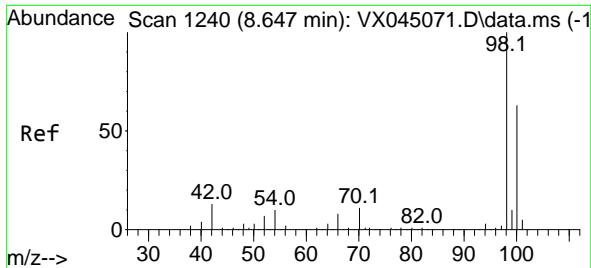
Tgt Ion:117 Resp: 7259  
 Ion Ratio Lower Upper  
 117 100  
 119 4.1 76.7 115.1#  
 121 0.0 25.5 38.3#



#44  
 Trichloroethene  
 Concen: 0.380 ug/l  
 RT: 7.135 min Scan# 992  
 Delta R.T. 0.012 min  
 Lab File: VX045393.D  
 Acq: 21 Mar 2025 17:11

Tgt Ion:130 Resp: 325  
 Ion Ratio Lower Upper  
 130 100  
 95 63.6 0.0 205.0

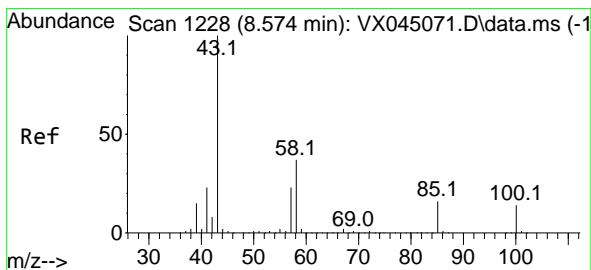
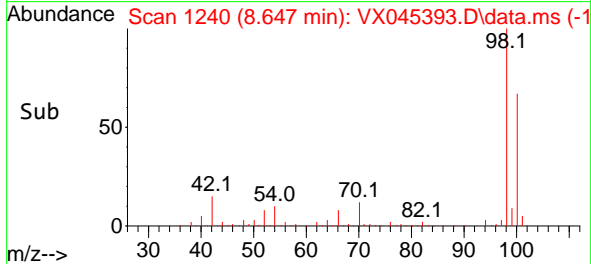
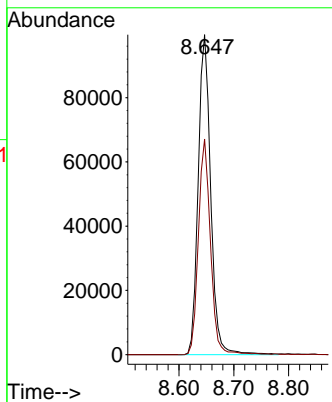
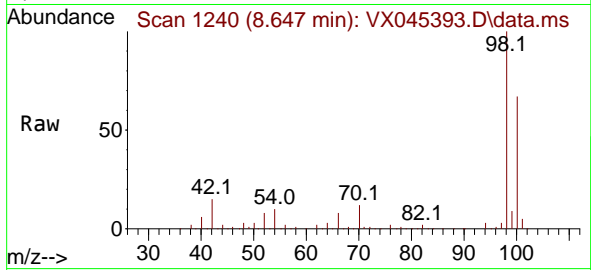




#50  
 Toluene-d8  
 Concen: 51.816 ug/l  
 RT: 8.647 min Scan# 11  
 Delta R.T. -0.000 min  
 Lab File: VX045393.D  
 Acq: 21 Mar 2025 17:11

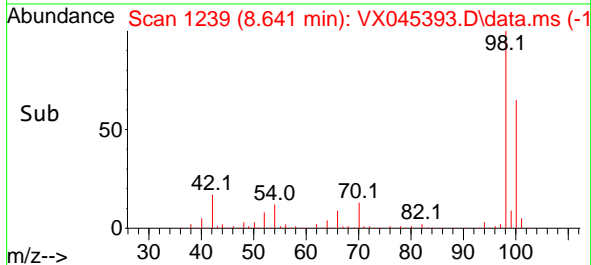
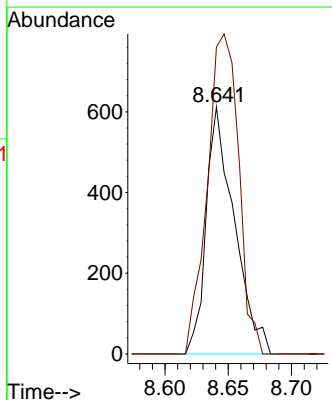
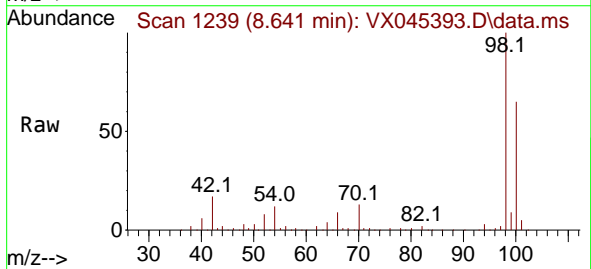
Instrument :  
 MSVOA\_X  
 ClientSampleId :  
 DUP06-20250314

Tgt Ion: 98 Resp: 158139  
 Ion Ratio Lower Upper  
 98 100  
 100 65.4 52.0 78.0

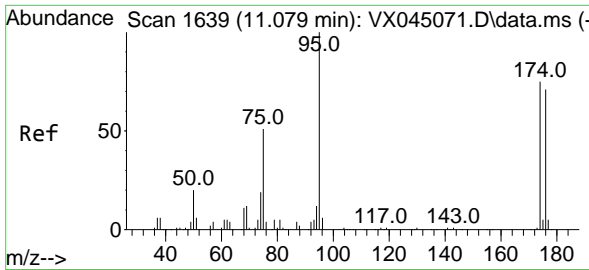


#51  
 4-Methyl-2-Pentanone  
 Concen: 0.642 ug/l  
 RT: 8.641 min Scan# 1239  
 Delta R.T. 0.067 min  
 Lab File: VX045393.D  
 Acq: 21 Mar 2025 17:11

Tgt Ion: 43 Resp: 948  
 Ion Ratio Lower Upper  
 43 100  
 58 144.2 29.2 43.8#

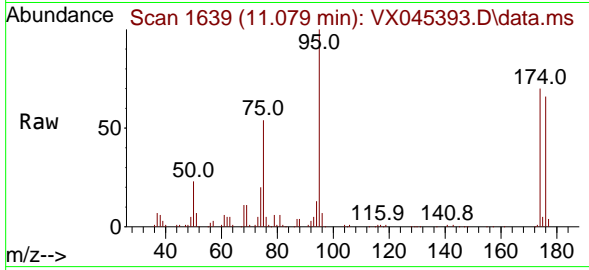




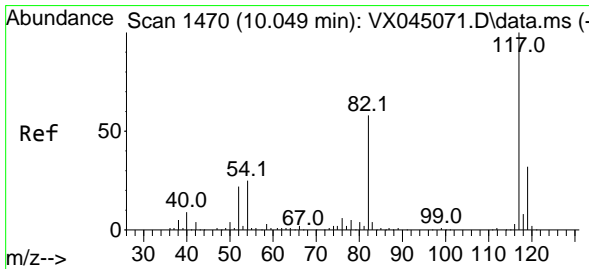
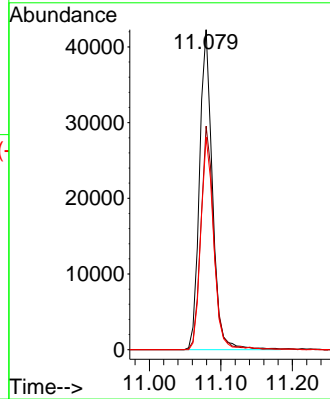
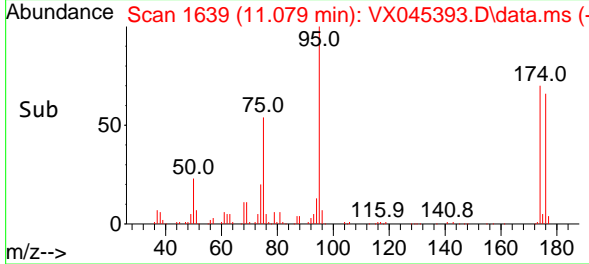


#62  
 4-Bromofluorobenzene  
 Concen: 52.265 ug/l  
 RT: 11.079 min Scan# 1639  
 Delta R.T. -0.000 min  
 Lab File: VX045393.D  
 Acq: 21 Mar 2025 17:11

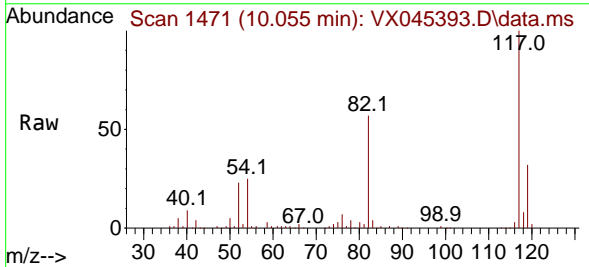
Instrument : MSVOA\_X  
 ClientSampleId : DUP06-20250314



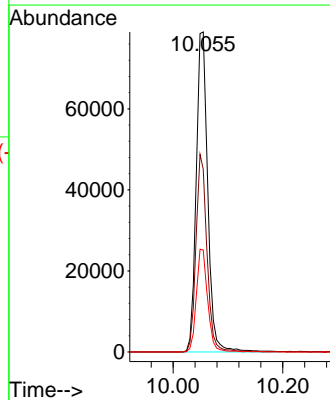
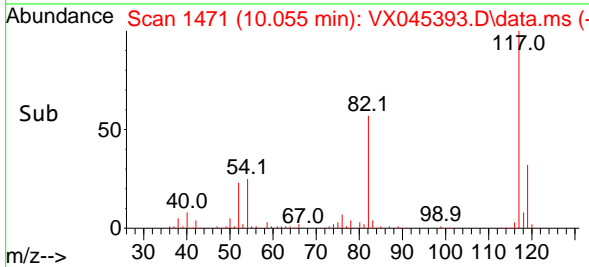
Tgt Ion: 95 Resp: 52856  
 Ion Ratio Lower Upper  
 95 100  
 174 71.0 0.0 148.2  
 176 67.1 0.0 141.4

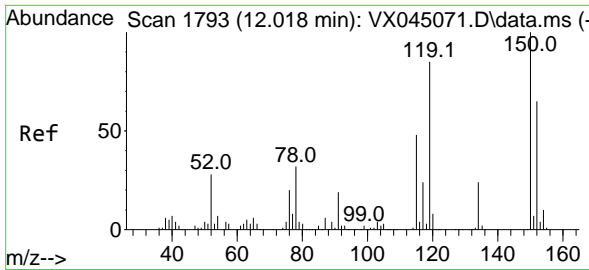


#63  
 Chlorobenzene-d5  
 Concen: 50.000 ug/l  
 RT: 10.055 min Scan# 1471  
 Delta R.T. 0.006 min  
 Lab File: VX045393.D  
 Acq: 21 Mar 2025 17:11



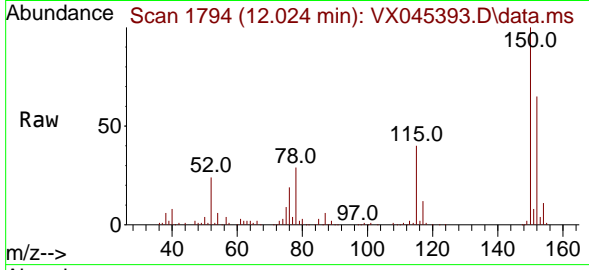
Tgt Ion: 117 Resp: 116324  
 Ion Ratio Lower Upper  
 117 100  
 82 57.1 46.3 69.5  
 119 31.9 25.7 38.5



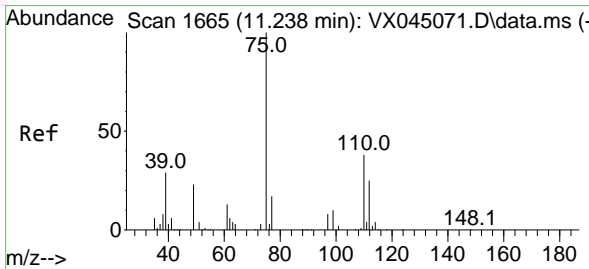
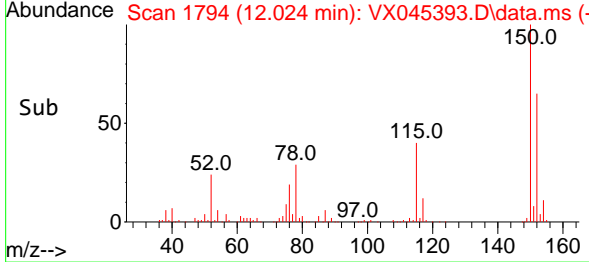
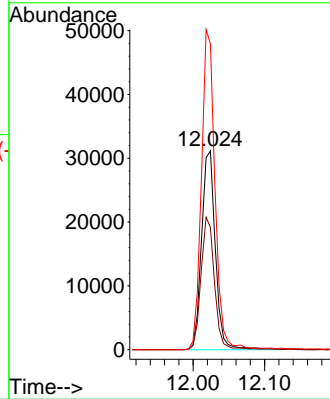


#72  
 1,4-Dichlorobenzene-d4  
 Concen: 50.000 ug/l  
 RT: 12.024 min Scan# 1  
 Delta R.T. 0.006 min  
 Lab File: VX045393.D  
 Acq: 21 Mar 2025 17:11

Instrument :  
 MSVOA\_X  
 ClientSampleId :  
 DUP06-20250314

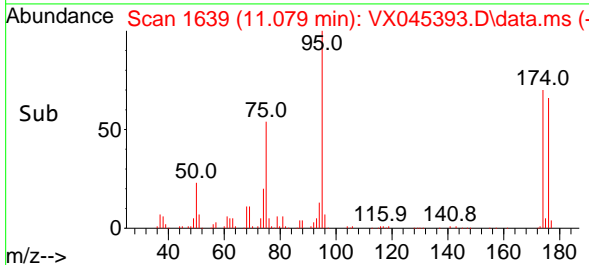
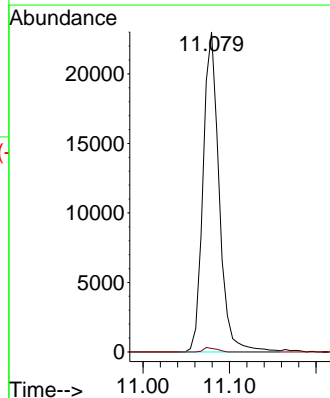
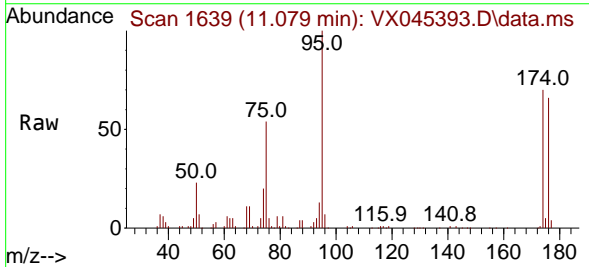


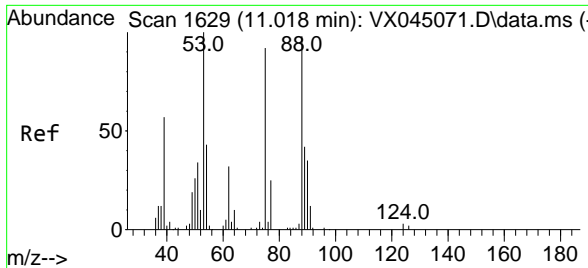
Tgt Ion:152 Resp: 41891  
 Ion Ratio Lower Upper  
 152 100  
 115 64.8 44.2 132.6  
 150 157.2 0.0 349.0



#76  
 1,2,3-Trichloropropane  
 Concen: 30.478 ug/l  
 RT: 11.079 min Scan# 1639  
 Delta R.T. -0.159 min  
 Lab File: VX045393.D  
 Acq: 21 Mar 2025 17:11

Tgt Ion: 75 Resp: 29717  
 Ion Ratio Lower Upper  
 75 100  
 77 1.1 20.7 62.1#





#81  
 trans-1,4-Dichloro-2-butene  
 Concen: 104.303 ug/l  
 RT: 11.079 min Scan# 10  
 Delta R.T. 0.061 min  
 Lab File: VX045393.D  
 Acq: 21 Mar 2025 17:11

Instrument :  
 MSVOA\_X  
 ClientSampleId :  
 DUP06-20250314

Tgt Ion: 75 Resp: 29717

Ion	Ratio	Lower	Upper
75	100		
53	0.0	88.5	132.7#
89	0.0	36.2	54.4#

