

Data Path : Z:\voasrv\HPCHEM1\MSVOA\_X\Data\VX032222\  
 Data File : VX027644.D  
 Acq On : 23 Mar 2022 04:07  
 Operator : JC/MD  
 Sample : N2062-11  
 Misc : 5.0mL/MSVOA\_X/WATER  
 ALS Vial : 42 Sample Multiplier: 1

Instrument :  
 MSVOA\_X  
 ClientSampleId :  
 TB-2022-03-21

Integration Parameters: RTEINT.P

Integrator: RTE  
 Smoothing : ON                   Filtering: 5  
 Sampling : 1                    Min Area: 3 % of largest Peak  
 Start Thrs: 0.2                Max Peaks: 100  
 Stop Thrs : 0                 Peak Location: TOP

If leading or trailing edge < 100 prefer < Baseline drop else tangent >  
 Peak separation: 5

Method : Z:\voasrv\HPCHEM1\MSVOA\_X\Method\82X031722W.M  
 Title : SW846 8260

Signal : TIC: VX027644.D\data.ms

peak #	R.T. min	first scan	max scan	last scan	PK TY	peak height	corr. area	corr. % max.	% of total
1	1.245	21	26	43	rBV	26234	63514	3.69%	0.685%
2	2.538	232	238	247	rBV	13692	25670	1.49%	0.277%
3	5.391	692	706	721	rBV2	211493	614709	35.70%	6.628%
4	5.556	721	733	757	rVB	357108	1016046	59.00%	10.956%
5	5.958	788	799	817	rBV	209739	559280	32.48%	6.031%
6	6.763	921	931	948	rBV	537333	1279539	74.30%	13.797%
7	8.653	1234	1241	1255	rBV	1107657	1722080	100.00%	18.569%
8	10.055	1465	1471	1489	rBV	1125425	1497639	86.97%	16.149%
9	11.085	1634	1640	1650	rBV	865721	1134799	65.90%	12.236%
10	12.024	1789	1794	1805	rVB	1129127	1360625	79.01%	14.672%

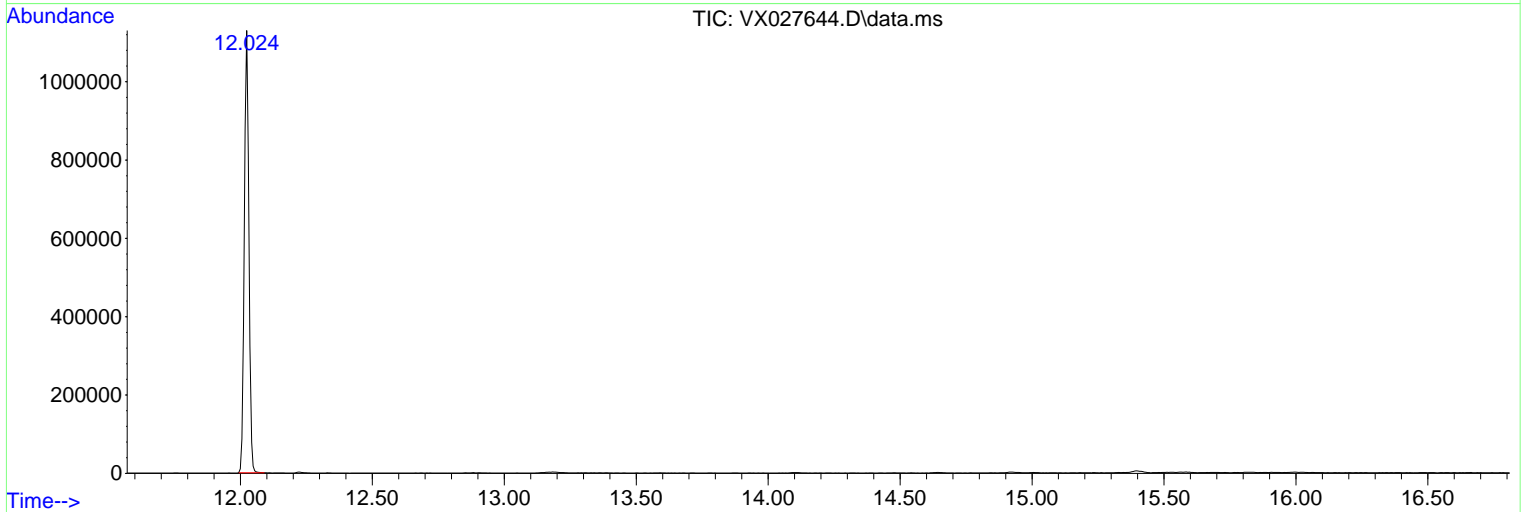
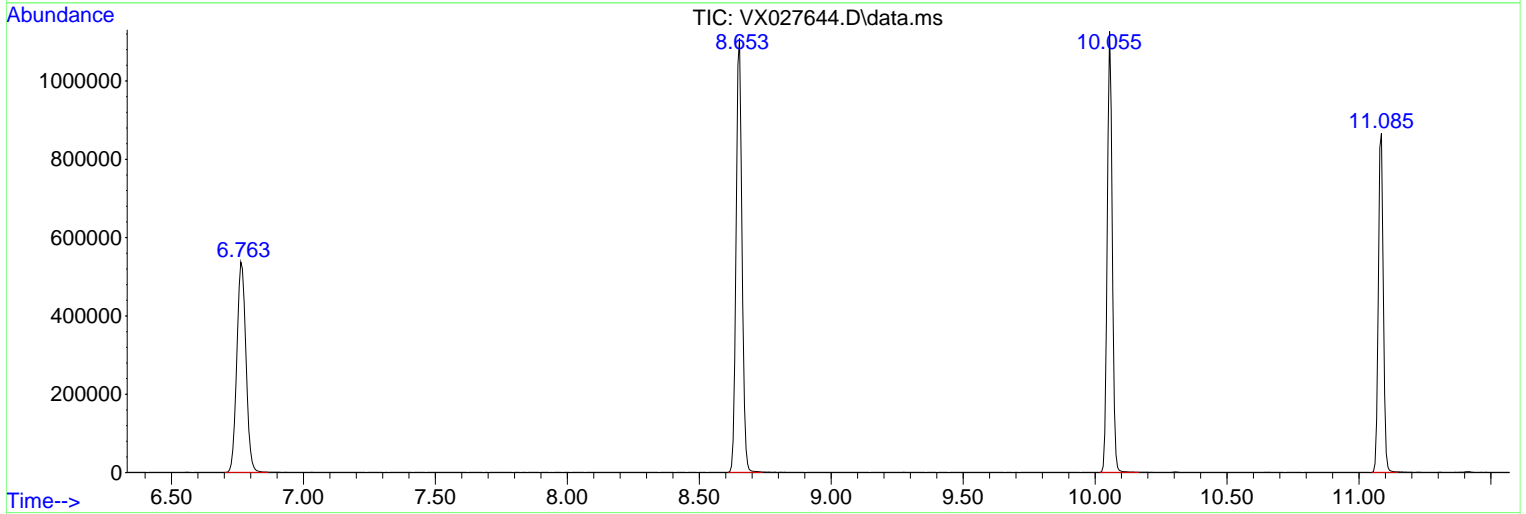
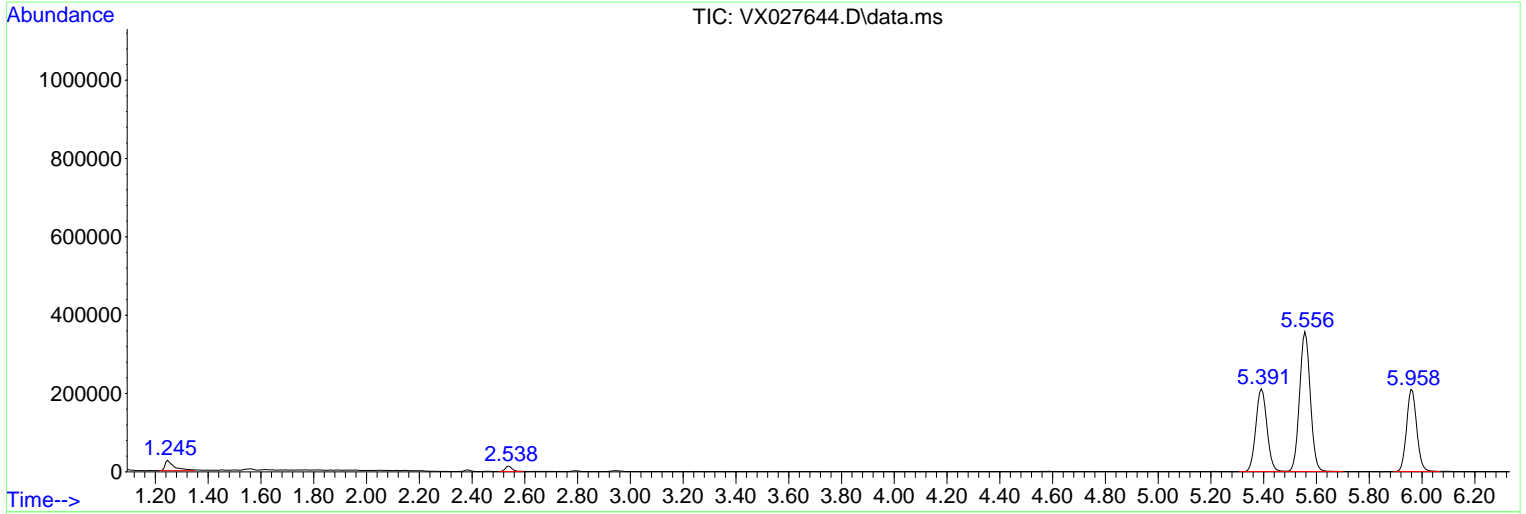
Sum of corrected areas: 9273901

Data Path : Z:\voasrv\HPCHEM1\MSVOA\_X\Data\VX032222\  
 Data File : VX027644.D  
 Acq On : 23 Mar 2022 04:07  
 Operator : JC/MD  
 Sample : N2062-11  
 Misc : 5.0mL/MSVOA\_X/WATER  
 ALS Vial : 42 Sample Multiplier: 1

Instrument :  
 MSVOA\_X  
 ClientSampleId :  
 TB-2022-03-21

Quant Method : Z:\voasrv\HPCHEM1\MSVOA\_X\Method\82X031722W.M  
 Quant Title : SW846 8260

TIC Library : C:\Database\NIST20.L  
 TIC Integration Parameters: LSCINT.P



Library Search Compound Report

Data Path : Z:\voasrv\HPCHEM1\MSVOA\_X\Data\VX032222\  
Data File : VX027644.D  
Acq On : 23 Mar 2022 04:07  
Operator : JC/MD  
Sample : N2062-11  
Misc : 5.0mL/MSVOA\_X/WATER  
ALS Vial : 42 Sample Multiplier: 1

Instrument :  
MSVOA\_X  
ClientSampleId :  
TB-2022-03-21

Quant Method : Z:\voasrv\HPCHEM1\MSVOA\_X\Method\82X031722W.M  
Quant Title : SW846 8260

TIC Library : C:\Database\NIST20.L  
TIC Integration Parameters: LSCINT.P

No Library Search Compounds Detected

\*\*\*\*\*

Data Path : Z:\voasrv\HPCHEM1\MSVOA\_X\Data\VX032222\  
Data File : VX027644.D  
Acq On : 23 Mar 2022 04:07  
Operator : JC/MD  
Sample : N2062-11  
Misc : 5.0mL/MSVOA\_X/WATER  
ALS Vial : 42 Sample Multiplier: 1

Instrument :  
MSVOA\_X  
ClientSampleId :  
TB-2022-03-21

Quant Method : Z:\voasrv\HPCHEM1\MSVOA\_X\Method\82X031722W.M  
Quant Title : SW846 8260

TIC Library : C:\Database\NIST0.L  
TIC Integration Parameters: LSCINT.P

TIC Top Hit name	RT	EstConc	Units	Response	--Internal Standard--		
					#	RT	Resp Conc

---