

Data Path : Z:\voasrv\HPCHEM1\MSVOA_X\Data\VX032223\
 Data File : VX034678.D
 Acq On : 22 Mar 2023 17:33
 Operator : JC/MD
 Sample : 02039-03
 Misc : 5.0mL/MSVOA_X/WATER
 ALS Vial : 1 Sample Multiplier: 1

Instrument :
 MSVOA_X
 ClientSampleId :
 PMW-1

Quant Time: Mar 23 07:55:37 2023
 Quant Method : Z:\voasrv\HPCHEM1\MSVOA_X\Method\82X031023W.M
 Quant Title : SW846 8260
 QLast Update : Mon Mar 13 10:29:32 2023
 Response via : Initial Calibration

Compound	R.T.	QIon	Response	Conc	Units	Dev(Min)

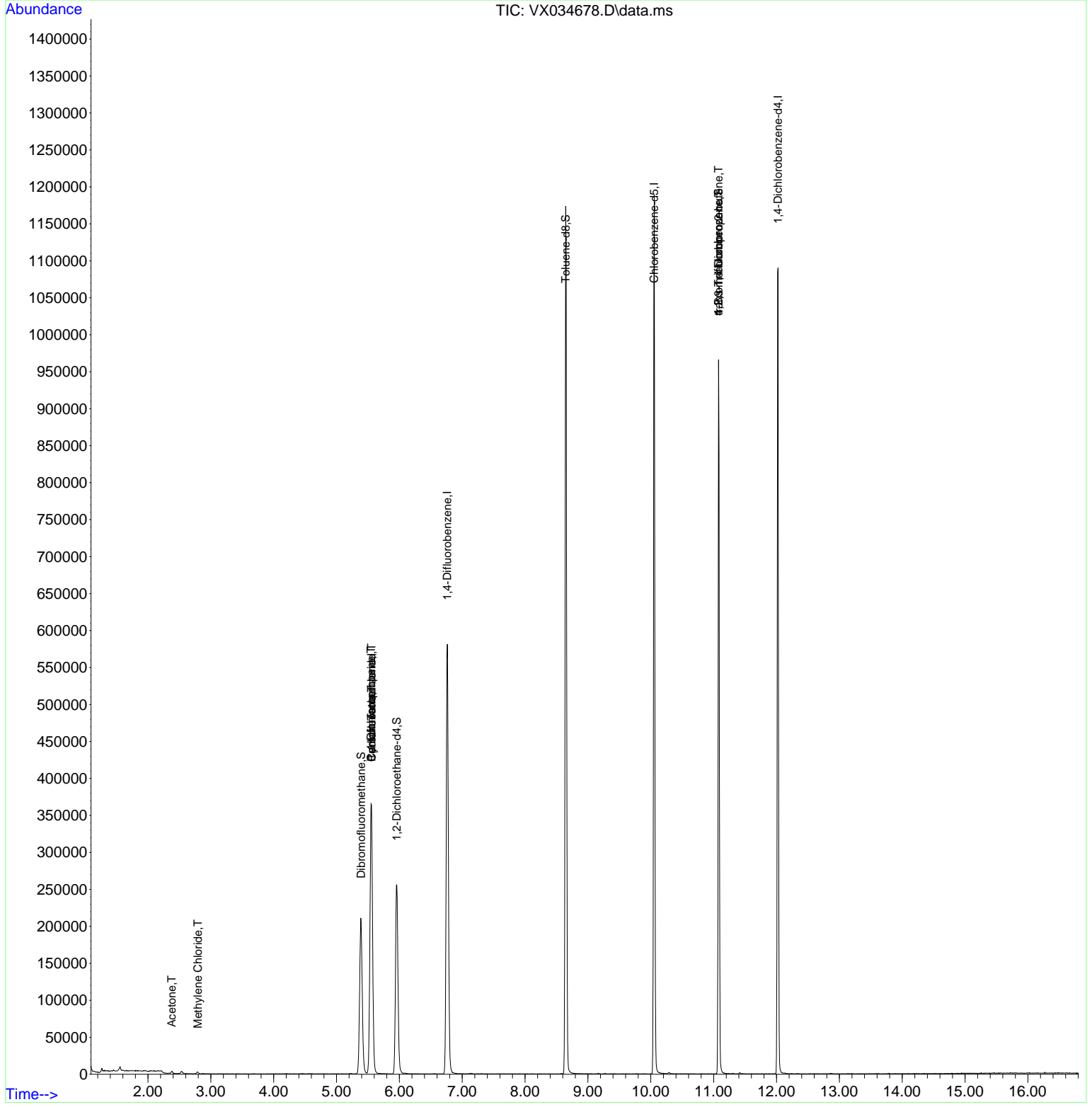
Internal Standards						
1) Pentafluorobenzene	5.556	168	333107	50.000	ug/l	0.01
34) 1,4-Difluorobenzene	6.763	114	573654	50.000	ug/l	0.00
63) Chlorobenzene-d5	10.055	117	509125	50.000	ug/l	0.00
72) 1,4-Dichlorobenzene-d4	12.024	152	228751	50.000	ug/l	0.00
System Monitoring Compounds						
33) 1,2-Dichloroethane-d4	5.958	65	260240	53.702	ug/l	0.01
Spiked Amount	50.000	Range 78 - 117	Recovery	=	107.400%	
35) Dibromofluoromethane	5.391	113	179908	47.500	ug/l	0.01
Spiked Amount	50.000	Range 75 - 124	Recovery	=	95.000%	
50) Toluene-d8	8.647	98	683903	48.370	ug/l	0.00
Spiked Amount	50.000	Range 92 - 112	Recovery	=	96.740%	
62) 4-Bromofluorobenzene	11.079	95	263050	46.059	ug/l	0.00
Spiked Amount	50.000	Range 83 - 123	Recovery	=	92.120%	
Target Compounds						
						Qvalue
3) Chloromethane	1.313	50	397	Below Cal	#	42
16) Acetone	2.380	43	3294	1.443	ug/l #	83
20) Methylene Chloride	2.794	84	895	0.202	ug/l #	82
31) Cyclohexane	5.556	56	7834	1.153	ug/l #	1
36) 1,1-Dichloropropene	5.550	75	28845	4.958	ug/l #	51
38) Carbon Tetrachloride	5.556	117	36474	6.302	ug/l #	15
76) 1,2,3-Trichloropropane	11.079	75	138087	26.290	ug/l #	34
81) trans-1,4-Dichloro-2-b...	11.079	75	138087	71.123	ug/l #	8

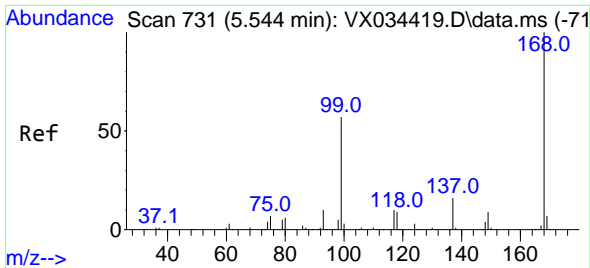
(#) = qualifier out of range (m) = manual integration (+) = signals summed

Data Path : Z:\voasrv\HPCHEM1\MSVOA_X\Data\VX032223\
 Data File : VX034678.D
 Acq On : 22 Mar 2023 17:33
 Operator : JC/MD
 Sample : 02039-03
 Misc : 5.0mL/MSVOA_X/WATER
 ALS Vial : 1 Sample Multiplier: 1

Instrument :
 MSVOA_X
ClientSampleId :
 PMW-1

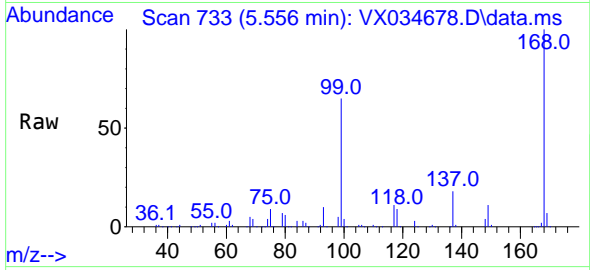
Quant Time: Mar 23 07:55:37 2023
 Quant Method : Z:\voasrv\HPCHEM1\MSVOA_X\Method\82X031023W.M
 Quant Title : SW846 8260
 QLast Update : Mon Mar 13 10:29:32 2023
 Response via : Initial Calibration



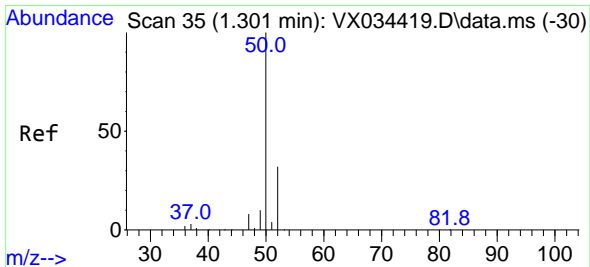
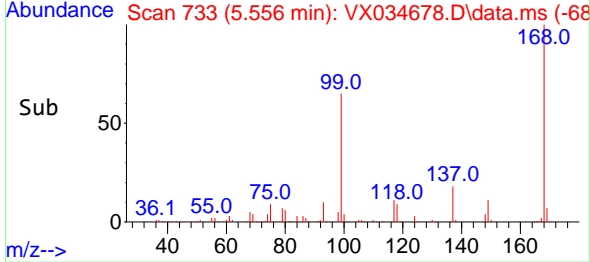
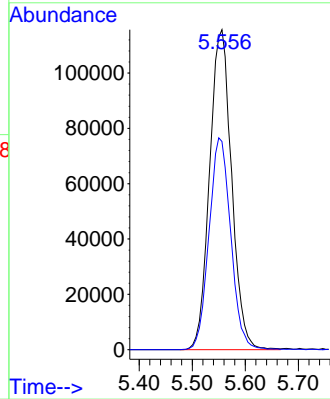


#1
 Pentafluorobenzene
 Concen: 50.000 ug/l
 RT: 5.556 min Scan# 71
 Delta R.T. 0.012 min
 Lab File: VX034678.D
 Acq: 22 Mar 2023 17:33

Instrument : MSVOA_X
 ClientSampleId :
 PMW-1

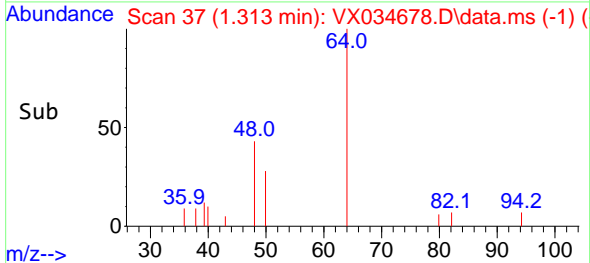
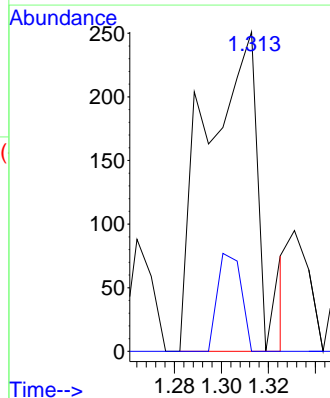
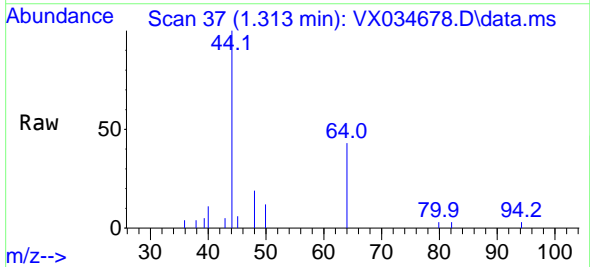


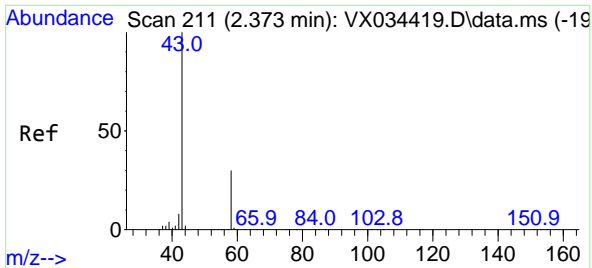
Tgt Ion:168 Resp: 333107
 Ion Ratio Lower Upper
 168 100
 99 65.1 45.7 68.5



#3
 Chloromethane
 Concen: Below Cal
 RT: 1.313 min Scan# 37
 Delta R.T. 0.012 min
 Lab File: VX034678.D
 Acq: 22 Mar 2023 17:33

Tgt Ion: 50 Resp: 397
 Ion Ratio Lower Upper
 50 100
 52 0.0 25.9 38.9#

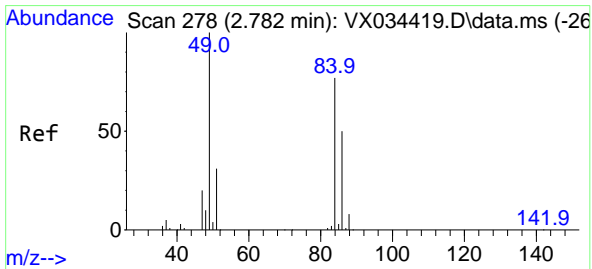
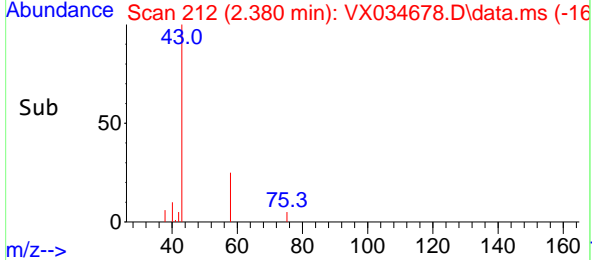
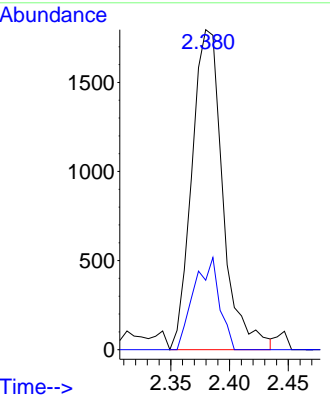
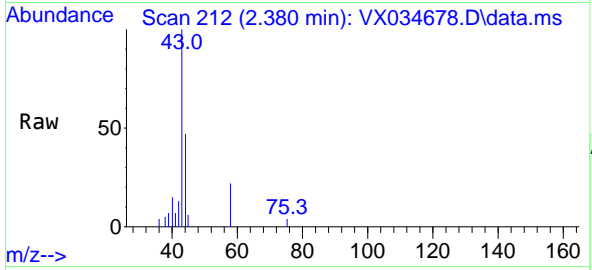




#16
 Acetone
 Concen: 1.443 ug/l
 RT: 2.380 min Scan# 211
 Delta R.T. 0.006 min
 Lab File: VX034678.D
 Acq: 22 Mar 2023 17:33

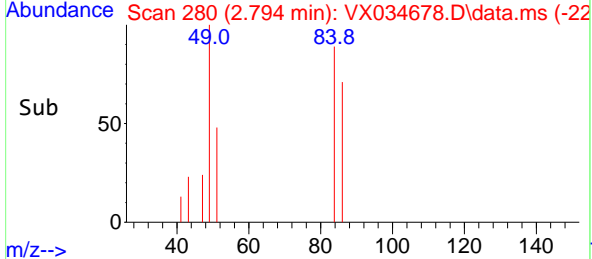
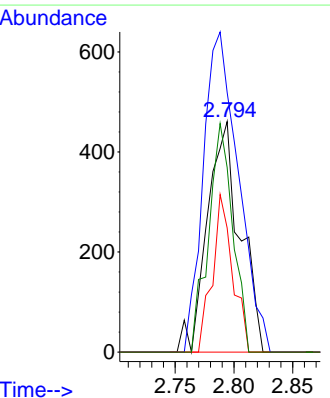
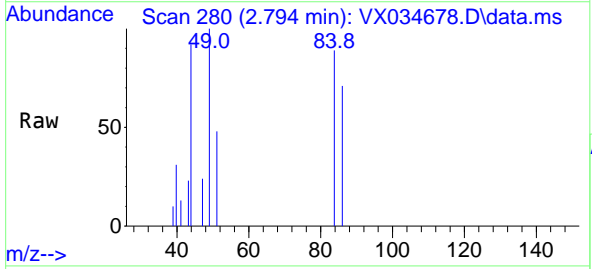
Instrument : MSVOA_X
 ClientSampleId : PMW-1

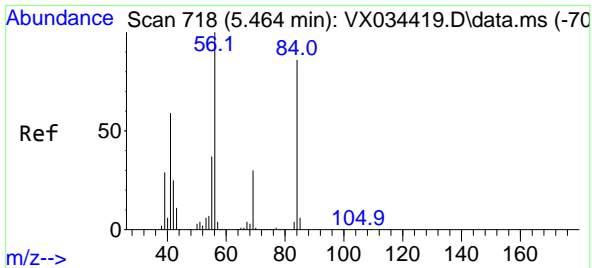
Tgt Ion: 43 Resp: 3294
 Ion Ratio Lower Upper
 43 100
 58 21.7 24.7 37.1#



#20
 Methylene Chloride
 Concen: 0.202 ug/l
 RT: 2.794 min Scan# 280
 Delta R.T. 0.012 min
 Lab File: VX034678.D
 Acq: 22 Mar 2023 17:33

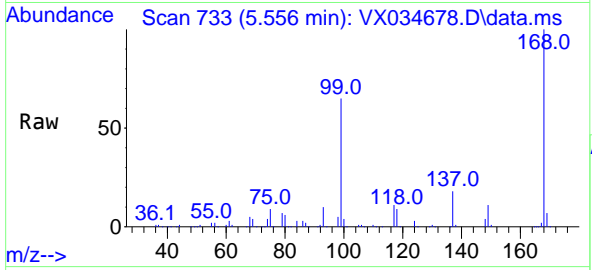
Tgt Ion: 84 Resp: 895
 Ion Ratio Lower Upper
 84 100
 49 112.6 103.8 155.8
 51 53.8 31.8 47.8#
 86 80.0 51.4 77.2#



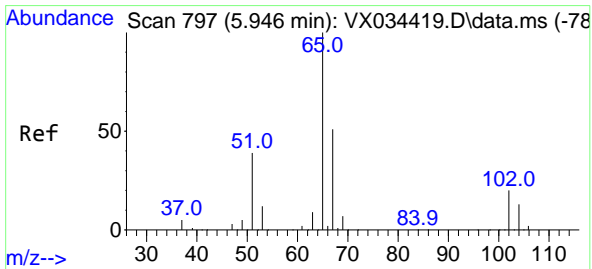
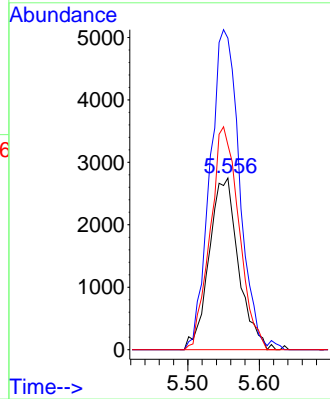
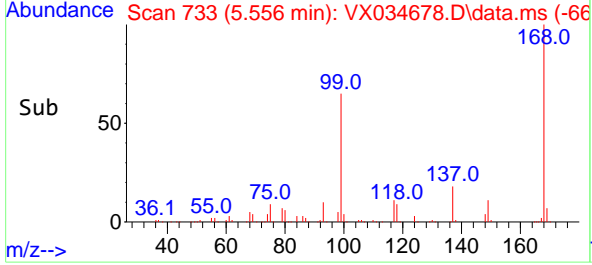


#31
 Cyclohexane
 Concen: 1.153 ug/l
 RT: 5.556 min Scan# 718
 Delta R.T. 0.092 min
 Lab File: VX034678.D
 Acq: 22 Mar 2023 17:33

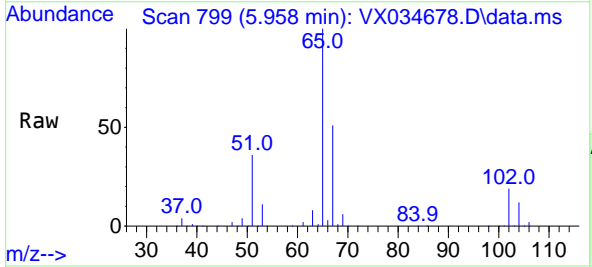
Instrument : MSVOA_X
 ClientSampleId : PMW-1



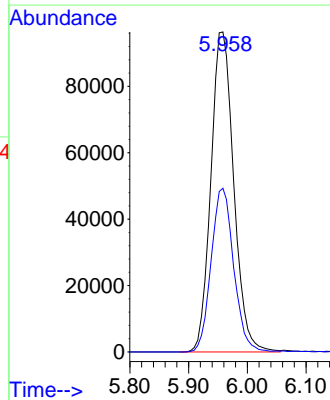
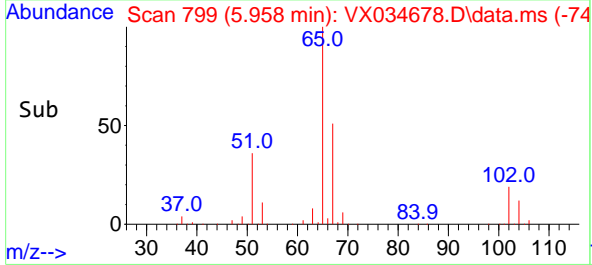
Tgt Ion: 56 Resp: 7834
 Ion Ratio Lower Upper
 56 100
 69 181.5 23.7 35.5#
 84 119.3 68.5 102.7#

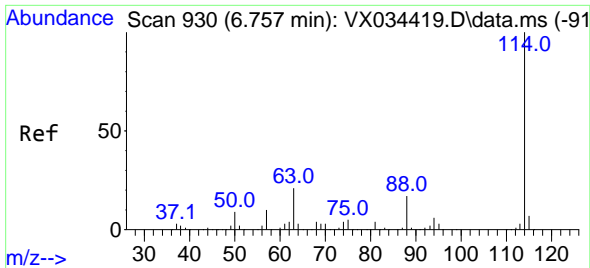


#33
 1,2-Dichloroethane-d4
 Concen: 53.702 ug/l
 RT: 5.958 min Scan# 799
 Delta R.T. 0.012 min
 Lab File: VX034678.D
 Acq: 22 Mar 2023 17:33



Tgt Ion: 65 Resp: 260240
 Ion Ratio Lower Upper
 65 100
 67 50.4 0.0 104.0

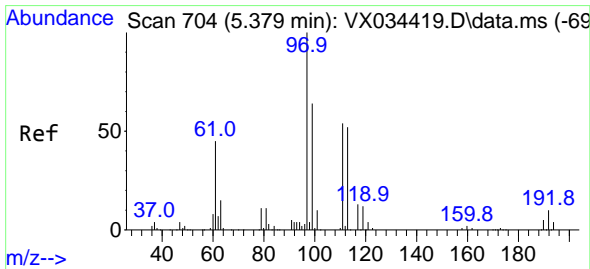
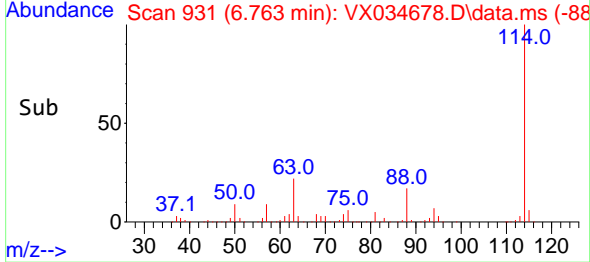
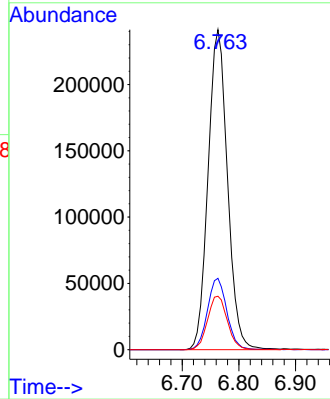
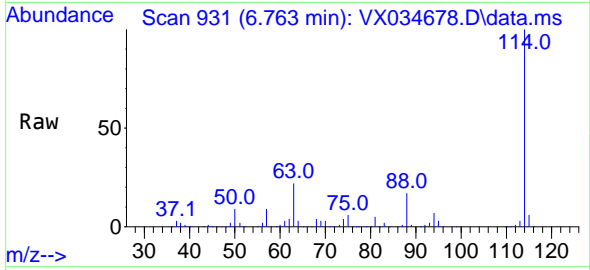




#34
 1,4-Difluorobenzene
 Concen: 50.000 ug/l
 RT: 6.763 min Scan# 91
 Delta R.T. 0.006 min
 Lab File: VX034678.D
 Acq: 22 Mar 2023 17:33

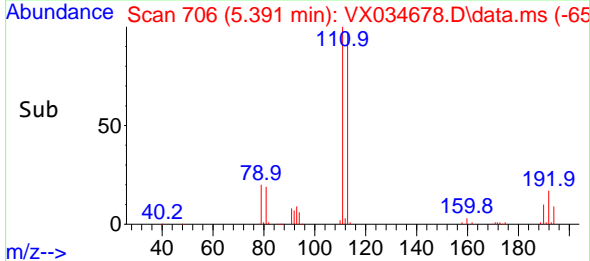
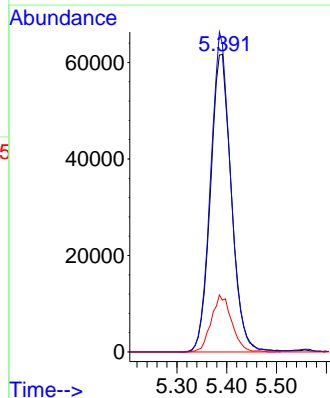
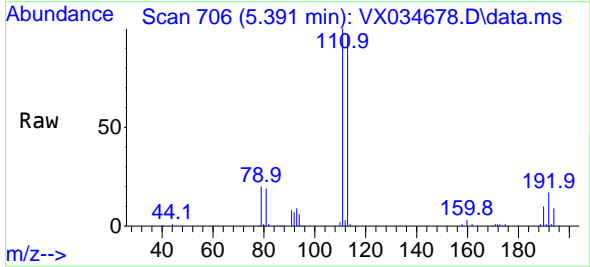
Instrument : MSVOA_X
 ClientSampleId : PMW-1

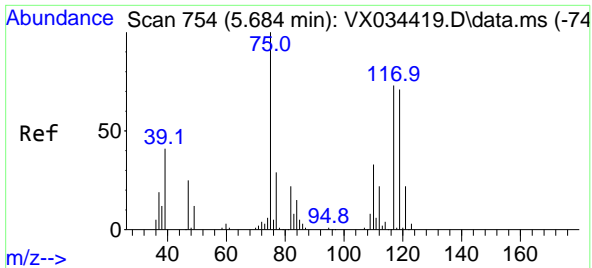
Tgt Ion:114 Resp: 573654
 Ion Ratio Lower Upper
 114 100
 63 22.3 0.0 42.2
 88 16.7 0.0 33.2



#35
 Dibromofluoromethane
 Concen: 47.500 ug/l
 RT: 5.391 min Scan# 706
 Delta R.T. 0.012 min
 Lab File: VX034678.D
 Acq: 22 Mar 2023 17:33

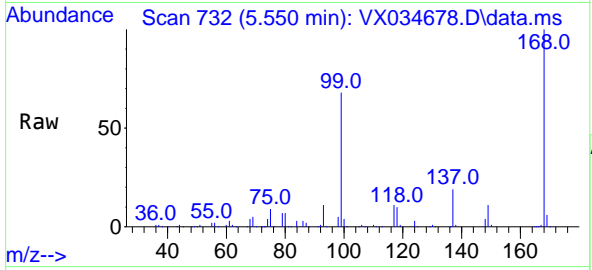
Tgt Ion:113 Resp: 179908
 Ion Ratio Lower Upper
 113 100
 111 103.5 83.7 125.5
 192 18.7 15.4 23.2



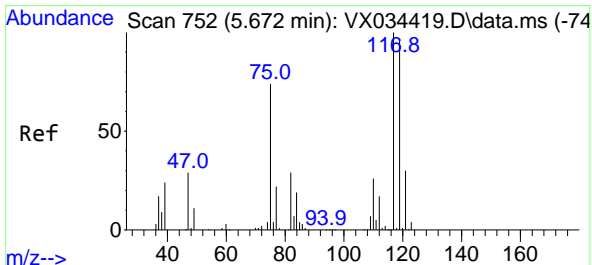
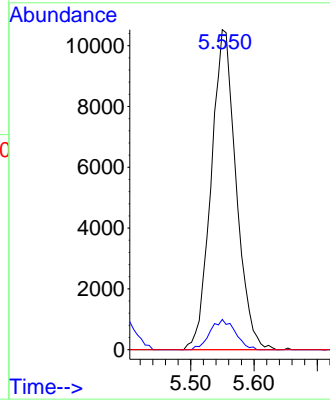
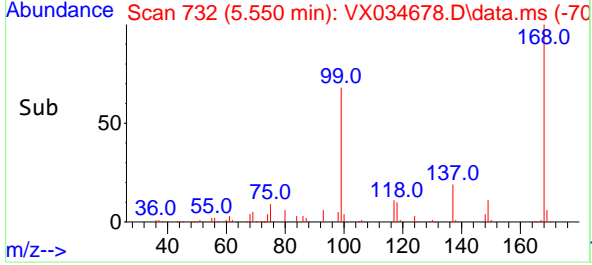


#36
 1,1-Dichloropropene
 Concen: 4.958 ug/l
 RT: 5.550 min Scan# 711
 Delta R.T. -0.134 min
 Lab File: VX034678.D
 Acq: 22 Mar 2023 17:33

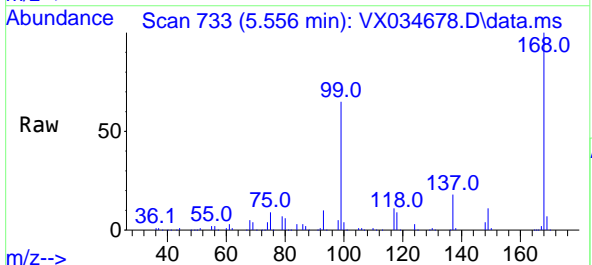
Instrument : MSVOA_X
 ClientSampleId : PMW-1



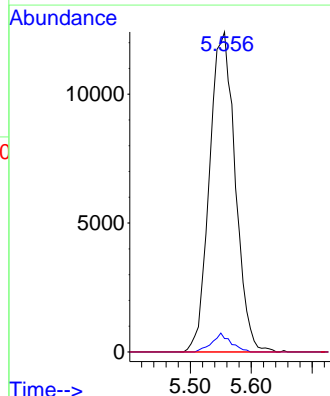
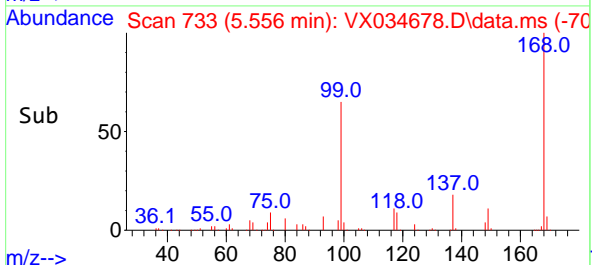
Tgt Ion: 75 Resp: 28845
 Ion Ratio Lower Upper
 75 100
 110 9.5 17.5 52.5#
 77 0.0 24.3 36.5#

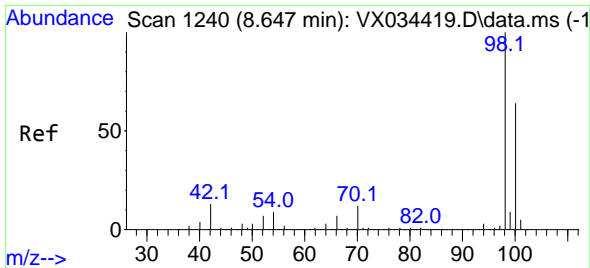


#38
 Carbon Tetrachloride
 Concen: 6.302 ug/l
 RT: 5.556 min Scan# 733
 Delta R.T. -0.116 min
 Lab File: VX034678.D
 Acq: 22 Mar 2023 17:33



Tgt Ion: 117 Resp: 36474
 Ion Ratio Lower Upper
 117 100
 119 4.2 76.6 114.8#
 121 0.0 23.8 35.6#

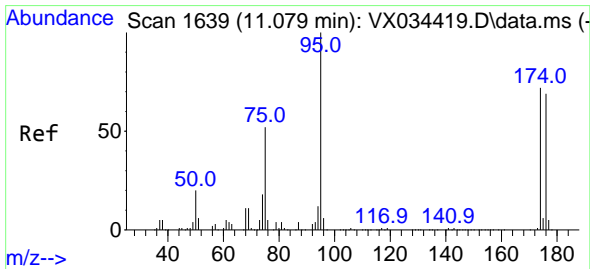
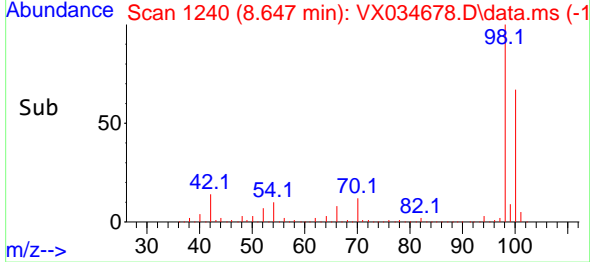
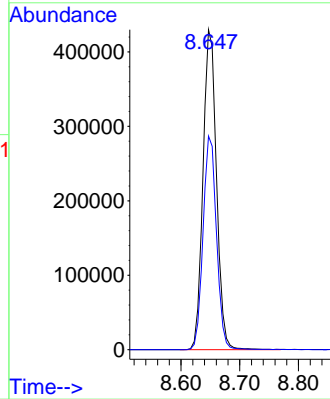
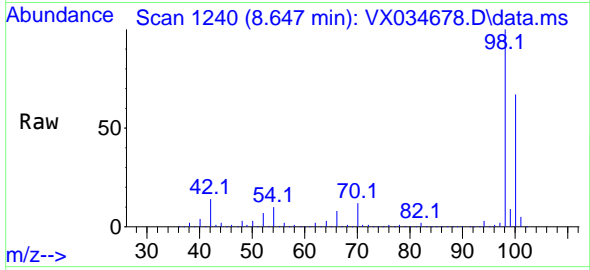




#50
 Toluene-d8
 Concen: 48.370 ug/l
 RT: 8.647 min Scan# 11
 Delta R.T. 0.000 min
 Lab File: VX034678.D
 Acq: 22 Mar 2023 17:33

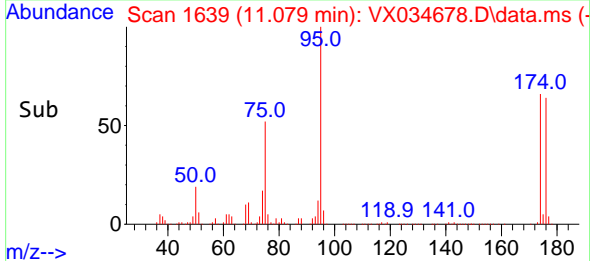
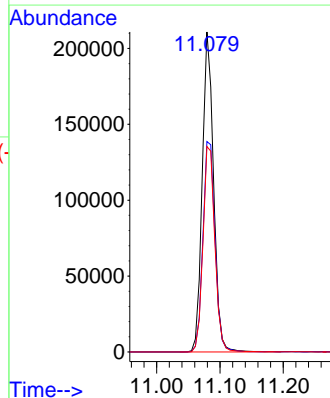
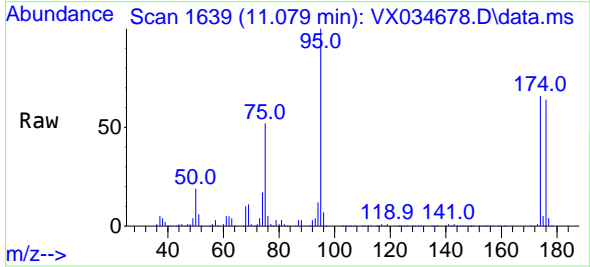
Instrument :
 MSVOA_X
 ClientSampleId :
 PMW-1

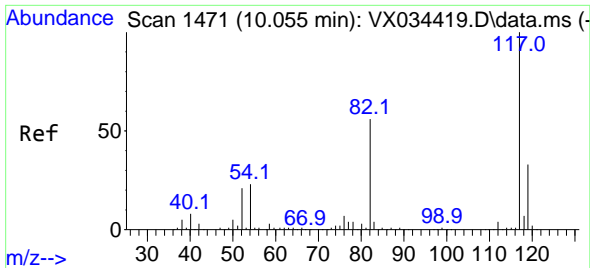
Tgt Ion: 98 Resp: 683903
 Ion Ratio Lower Upper
 98 100
 100 66.7 52.5 78.7



#62
 4-Bromofluorobenzene
 Concen: 46.059 ug/l
 RT: 11.079 min Scan# 1639
 Delta R.T. 0.000 min
 Lab File: VX034678.D
 Acq: 22 Mar 2023 17:33

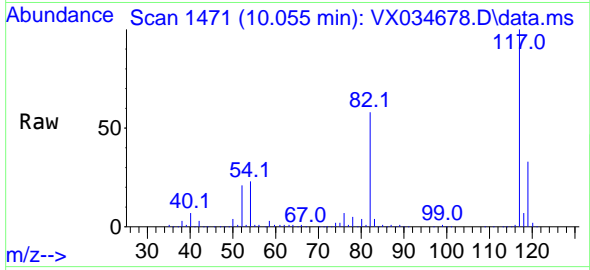
Tgt Ion: 95 Resp: 263050
 Ion Ratio Lower Upper
 95 100
 174 70.2 0.0 147.4
 176 67.6 0.0 140.6



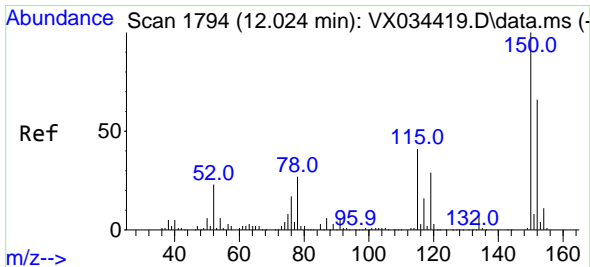
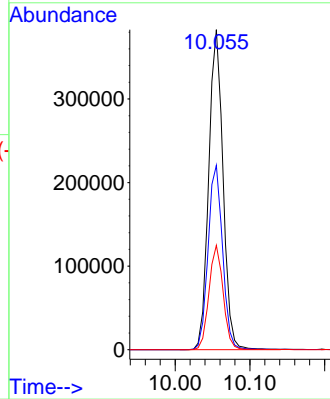
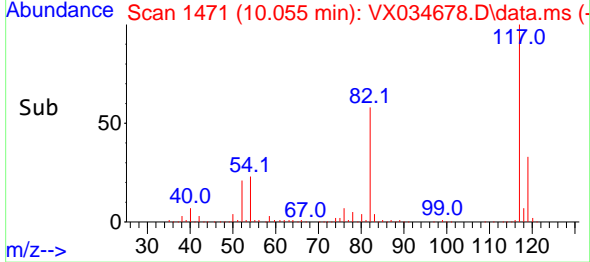


#63
 Chlorobenzene-d5
 Concen: 50.000 ug/l
 RT: 10.055 min Scan# 1471
 Delta R.T. 0.000 min
 Lab File: VX034678.D
 Acq: 22 Mar 2023 17:33

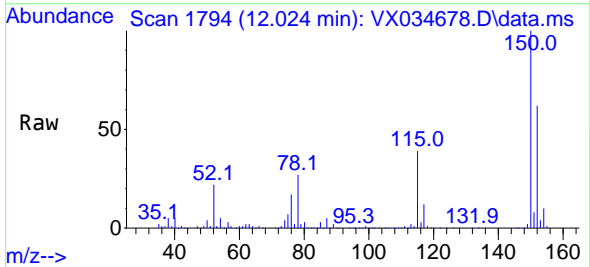
Instrument : MSVOA_X
 ClientSampleId : PMW-1



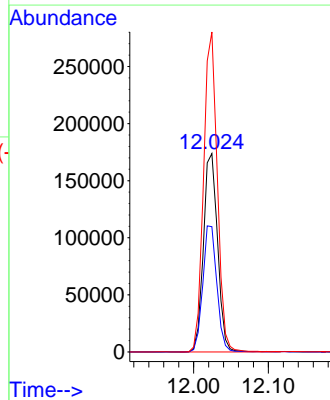
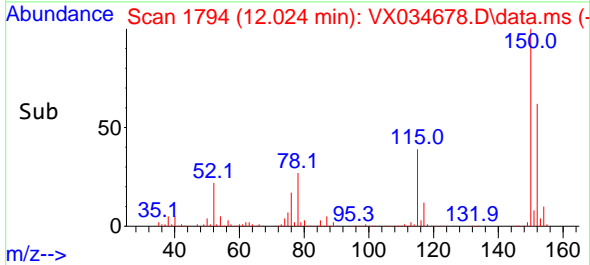
Tgt Ion:117 Resp: 509125
 Ion Ratio Lower Upper
 117 100
 82 57.6 45.0 67.4
 119 32.6 26.0 39.0

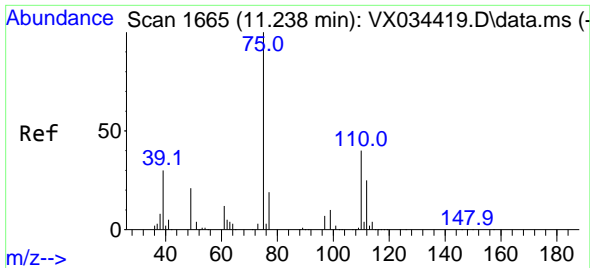


#72
 1,4-Dichlorobenzene-d4
 Concen: 50.000 ug/l
 RT: 12.024 min Scan# 1794
 Delta R.T. 0.000 min
 Lab File: VX034678.D
 Acq: 22 Mar 2023 17:33



Tgt Ion:152 Resp: 228751
 Ion Ratio Lower Upper
 152 100
 115 63.2 45.0 135.0
 150 156.4 0.0 352.4

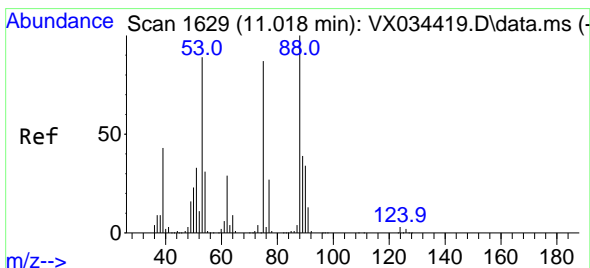
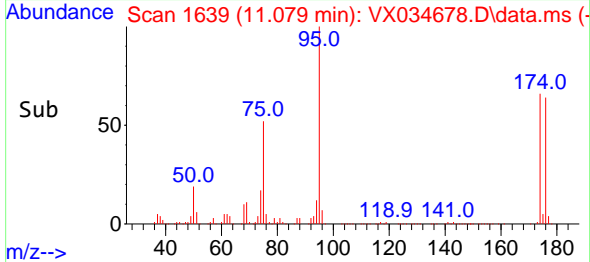
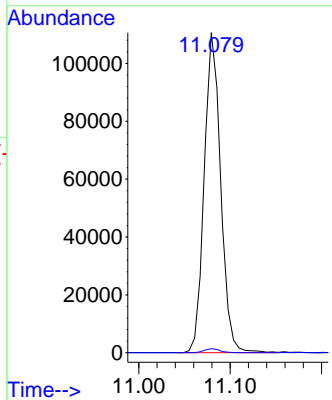
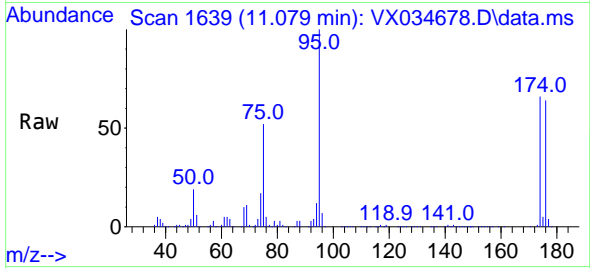




#76
 1,2,3-Trichloropropane
 Concen: 26.290 ug/l
 RT: 11.079 min Scan# 1639
 Delta R.T. -0.158 min
 Lab File: VX034678.D
 Acq: 22 Mar 2023 17:33

Instrument : MSVOA_X
 ClientSampleId : PMW-1

Tgt Ion: 75 Resp: 138087
 Ion Ratio Lower Upper
 75 100
 77 1.1 21.6 64.8#



#81
 trans-1,4-Dichloro-2-butene
 Concen: 71.123 ug/l
 RT: 11.079 min Scan# 1639
 Delta R.T. 0.061 min
 Lab File: VX034678.D
 Acq: 22 Mar 2023 17:33

Tgt Ion: 75 Resp: 138087
 Ion Ratio Lower Upper
 75 100
 53 0.0 82.6 124.0#
 89 0.0 36.9 55.3#

