

Data Path : Z:\voasrv\HPCHEM1\MSVOA\_X\Data\VX032321\  
 Data File : VX021376.D  
 Acq On : 23 Mar 2021 11:32  
 Operator : JC/MD  
 Sample : VX0323WBL01  
 Misc : 5.0mL/MSVOA\_X/WATER  
 ALS Vial : 4 Sample Multiplier: 1

Instrument :  
 MSVOA\_X  
 ClientSampleId :  
 VX0323WBL01

Integration Parameters: RTEINT.P  
 Integrator: RTE  
 Smoothing : ON Filtering: 5  
 Sampling : 1 Min Area: 3 % of largest Peak  
 Start Thrs: 0.2 Max Peaks: 100  
 Stop Thrs : 0 Peak Location: TOP

If leading or trailing edge < 100 prefer < Baseline drop else tangent >  
 Peak separation: 5

Method : Z:\voasrv\HPCHEM1\MSVOA\_X\Method\82X031621W.M  
 Title : SW846 8260

Signal : TIC: VX021376.D\data.ms

peak #	R.T. min	first scan	max scan	last scan	PK TY	peak height	corr. area	corr. % max.	% of total
1	1.593	79	86	90	rVB6	3487	7406	1.71%	0.326%
2	5.464	730	744	758	rBV	52425	150234	34.60%	6.617%
3	5.623	761	771	782	rBV	86129	244101	56.22%	10.752%
4	6.029	828	840	853	rBV	61285	162900	37.52%	7.175%
5	6.829	966	976	988	rBV	135209	321399	74.02%	14.156%
6	8.694	1286	1293	1313	rBV	274610	434213	100.00%	19.125%
7	10.094	1525	1531	1549	rVB	269838	366437	84.39%	16.140%
8	11.118	1699	1705	1714	rBV	214064	273247	62.93%	12.035%
9	12.059	1860	1865	1876	rVB	253931	310406	71.49%	13.672%

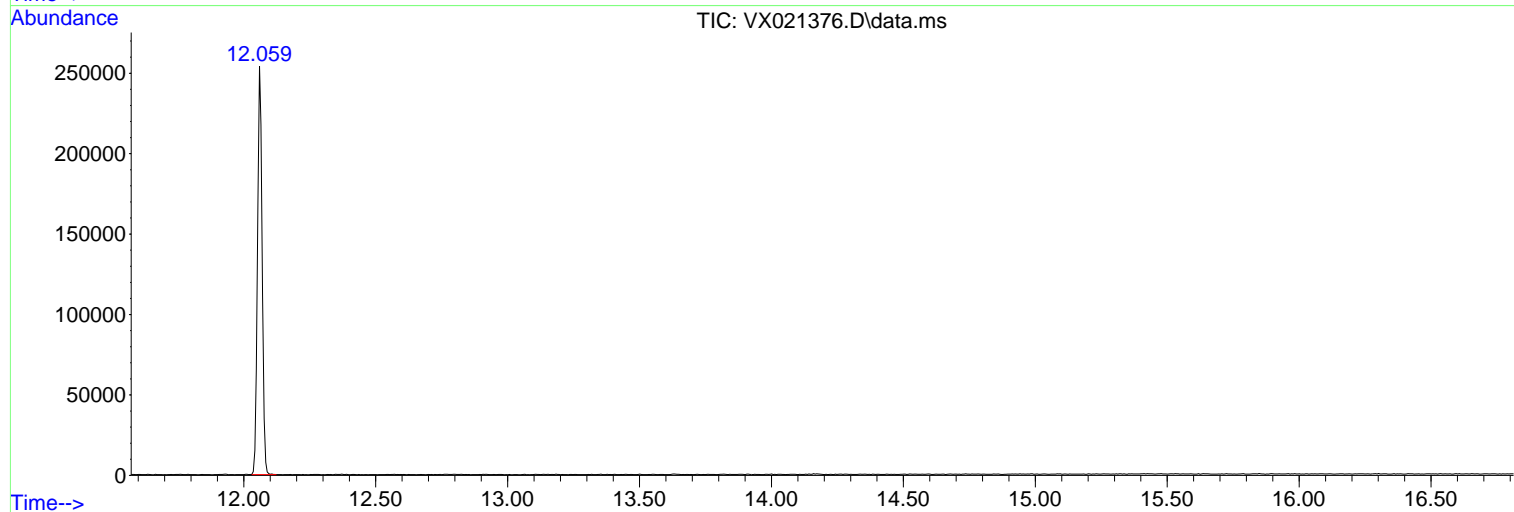
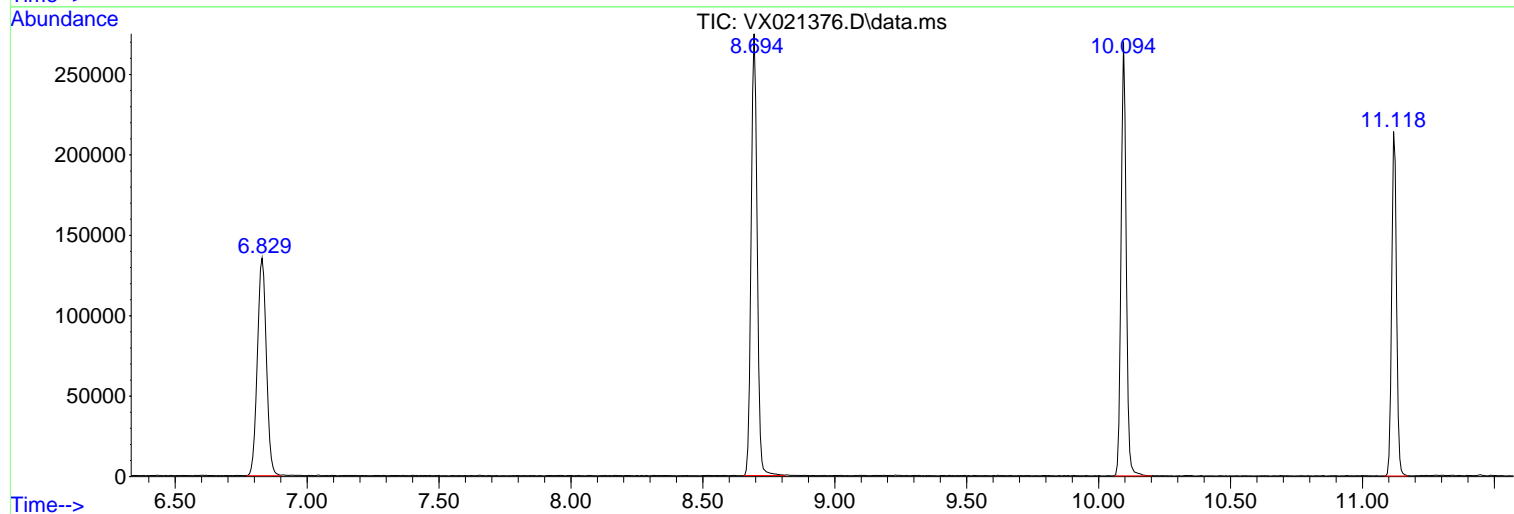
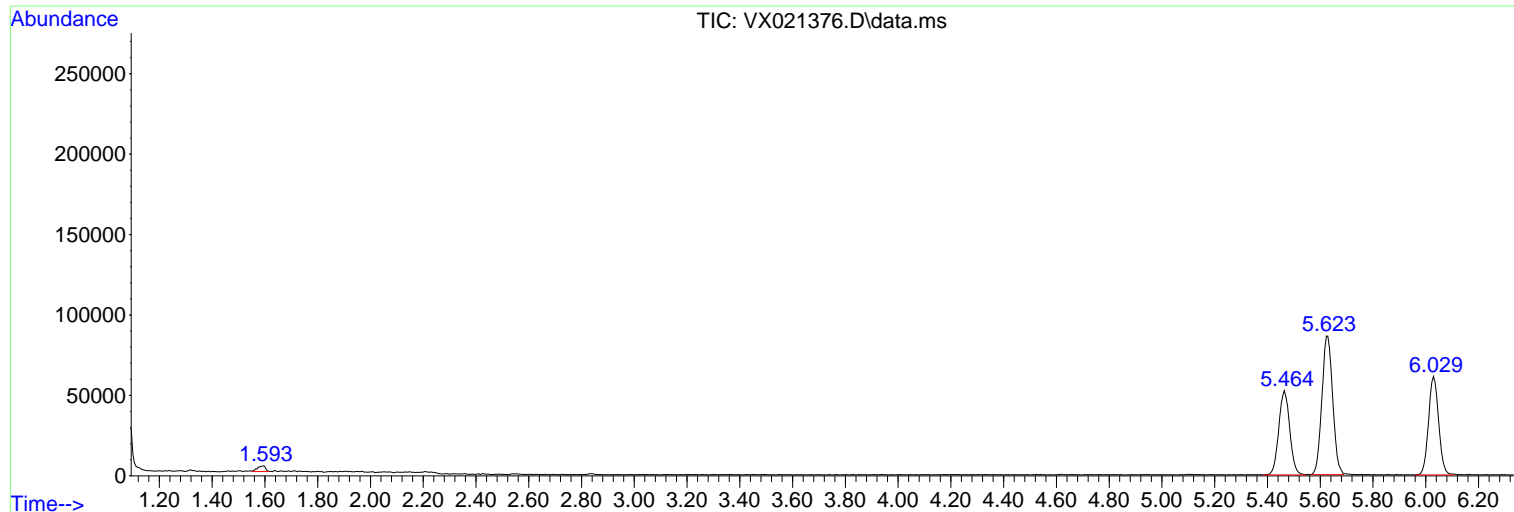
Sum of corrected areas: 2270343

Data Path : Z:\voasrv\HPCHEM1\MSVOA\_X\Data\VX032321\  
Data File : VX021376.D  
Acq On : 23 Mar 2021 11:32  
Operator : JC/MD  
Sample : VX0323WBL01  
Misc : 5.0mL/MSVOA\_X/WATER  
ALS Vial : 4 Sample Multiplier: 1

Instrument :  
MSVOA\_X  
ClientSampleId :  
VX0323WBL01

Quant Method : Z:\voasrv\HPCHEM1\MSVOA\_X\Method\82X031621W.M  
Quant Title : SW846 8260

TIC Library : C:\DATABASE\NIST11.L  
TIC Integration Parameters: LSCINT.P



Library Search Compound Report

Data Path : Z:\voasrv\HPCHEM1\MSVOA\_X\Data\VX032321\  
Data File : VX021376.D  
Acq On : 23 Mar 2021 11:32  
Operator : JC/MD  
Sample : VX0323WBL01  
Misc : 5.0mL/MSVOA\_X/WATER  
ALS Vial : 4 Sample Multiplier: 1

Instrument :  
MSVOA\_X  
ClientSampleId :  
VX0323WBL01

Quant Method : Z:\voasrv\HPCHEM1\MSVOA\_X\Method\82X031621W.M  
Quant Title : SW846 8260

TIC Library : C:\DATABASE\NIST11.L  
TIC Integration Parameters: LSCINT.P

No Library Search Compounds Detected

\*\*\*\*\*

Data Path : Z:\voasrv\HPCHEM1\MSVOA\_X\Data\VX032321\  
Data File : VX021376.D  
Acq On : 23 Mar 2021 11:32  
Operator : JC/MD  
Sample : VX0323WBL01  
Misc : 5.0mL/MSVOA\_X/WATER  
ALS Vial : 4 Sample Multiplier: 1

Instrument :  
MSVOA\_X  
ClientSampleId :  
VX0323WBL01

Quant Method : Z:\voasrv\HPCHEM1\MSVOA\_X\Method\82X031621W.M  
Quant Title : SW846 8260

TIC Library : C:\DATABASE\NIST11.L  
TIC Integration Parameters: LSCINT.P

TIC Top Hit name	RT	EstConc	Units	Response	--Internal Standard--			
					#	RT	Resp	Conc

---