

Data Path : Z:\voasrv\HPCHEM1\MSVOA\_X\Data\VX032322\  
 Data File : VX027666.D  
 Acq On : 23 Mar 2022 14:40  
 Operator : JC/MD  
 Sample : N2028-05  
 Misc : 5.0mL/MSVOA\_X/WATER  
 ALS Vial : 12 Sample Multiplier: 1

Instrument :  
 MSVOA\_X  
 ClientSampleId :  
 MW-118

Integration Parameters: RTEINT.P  
 Integrator: RTE  
 Smoothing : ON Filtering: 5  
 Sampling : 1 Min Area: 3 % of largest Peak  
 Start Thrs: 0.2 Max Peaks: 100  
 Stop Thrs : 0 Peak Location: TOP

If leading or trailing edge < 100 prefer < Baseline drop else tangent >  
 Peak separation: 5

Method : Z:\voasrv\HPCHEM1\MSVOA\_X\Method\82X031722W.M  
 Title : SW846 8260

Signal : TIC: VX027666.D\data.ms

peak #	R.T. min	first scan	max scan	last scan	PK TY	peak height	corr. area	corr. % max.	% of total
1	1.270	22	30	44	rBV	290114	1068251	66.63%	10.939%
2	2.380	207	212	221	rVB	9634	16719	1.04%	0.171%
3	2.532	229	237	245	rBV2	12024	35816	2.23%	0.367%
4	5.391	693	706	722	rBV	199649	586960	36.61%	6.011%
5	5.556	722	733	753	rVB	337176	961920	60.00%	9.850%
6	5.958	787	799	810	rBV	199450	534205	33.32%	5.470%
7	6.239	836	845	855	rBV5	7224	22151	1.38%	0.227%
8	6.763	921	931	947	rBV	515471	1213005	75.66%	12.422%
9	8.427	1198	1204	1210	rBV	14874	26014	1.62%	0.266%
10	8.653	1234	1241	1259	rVB	1017945	1603148	100.00%	16.417%
11	9.458	1367	1373	1380	rBV3	29504	50655	3.16%	0.519%
12	10.055	1465	1471	1483	rVB	1067687	1417517	88.42%	14.516%
13	11.085	1634	1640	1649	rBV	758989	991514	61.85%	10.153%
14	12.024	1788	1794	1802	rBV	1016474	1237436	77.19%	12.672%

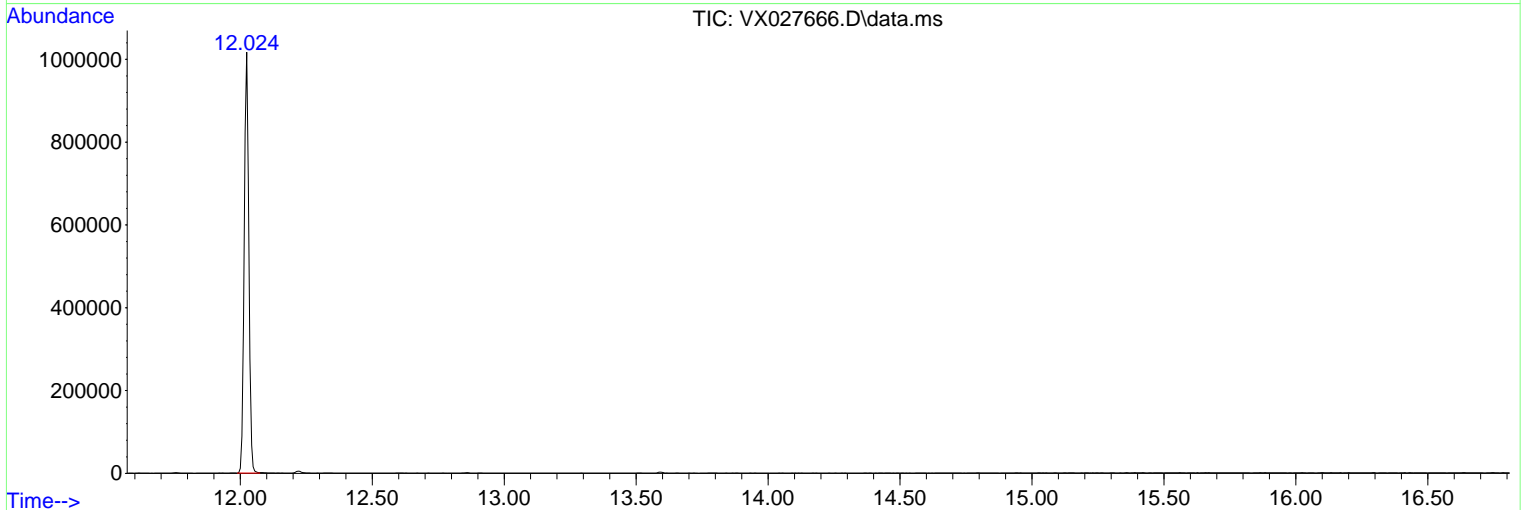
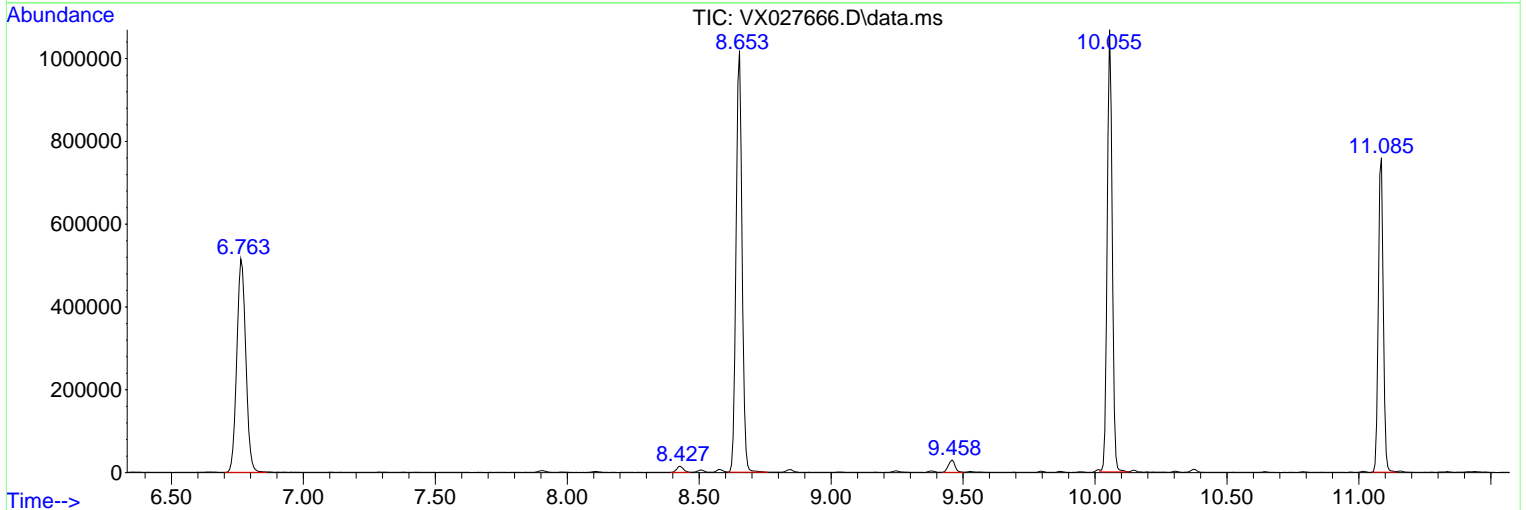
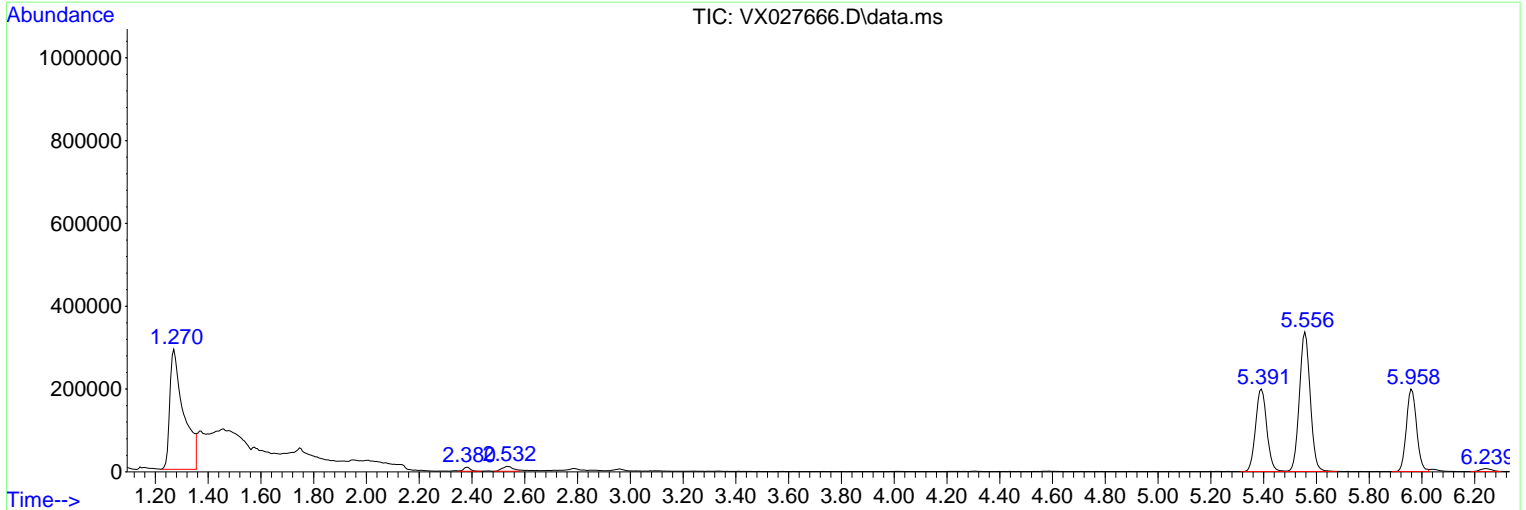
Sum of corrected areas: 9765311

Data Path : Z:\voasrv\HPCHEM1\MSVOA\_X\Data\VX032322\  
 Data File : VX027666.D  
 Acq On : 23 Mar 2022 14:40  
 Operator : JC/MD  
 Sample : N2028-05  
 Misc : 5.0mL/MSVOA\_X/WATER  
 ALS Vial : 12 Sample Multiplier: 1

Instrument :  
 MSVOA\_X  
 ClientSampleId :  
 MW-118

Quant Method : Z:\voasrv\HPCHEM1\MSVOA\_X\Method\82X031722W.M  
 Quant Title : SW846 8260

TIC Library : C:\Database\NIST20.L  
 TIC Integration Parameters: LSCINT.P



Data Path : Z:\voasrv\HPCHEM1\MSVOA\_X\Data\VX032322\  
 Data File : VX027666.D  
 Acq On : 23 Mar 2022 14:40  
 Operator : JC/MD  
 Sample : N2028-05  
 Misc : 5.0mL/MSVOA\_X/WATER  
 ALS Vial : 12 Sample Multiplier: 1

Instrument :  
 MSVOA\_X  
 ClientSampleId :  
 MW-118

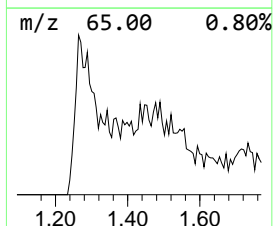
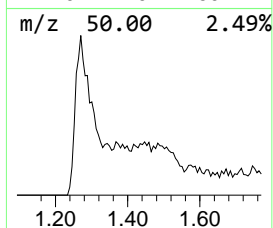
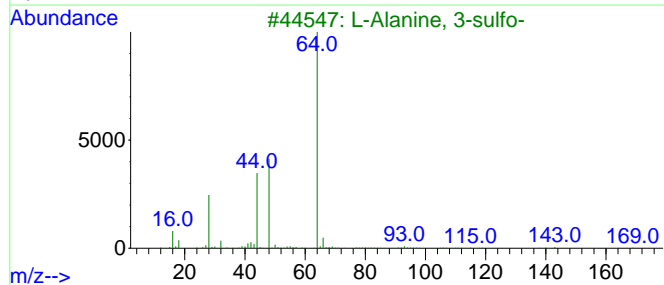
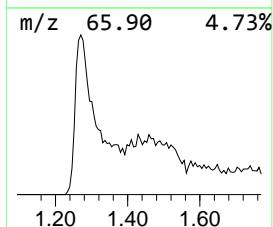
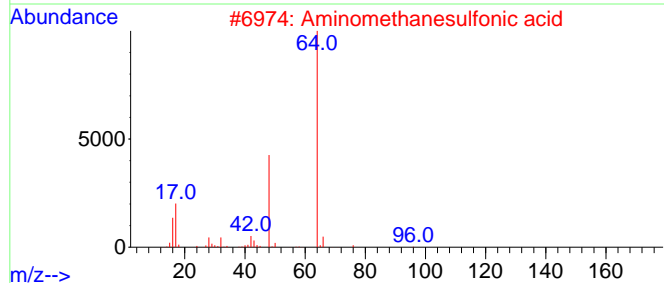
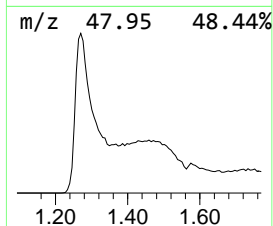
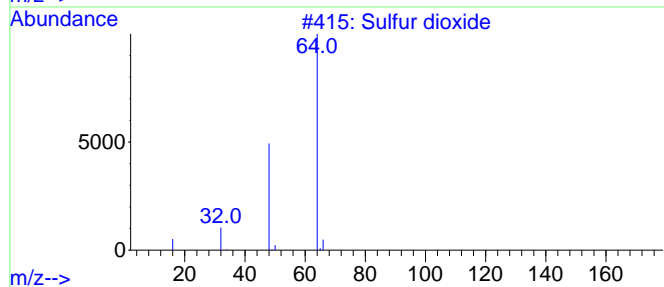
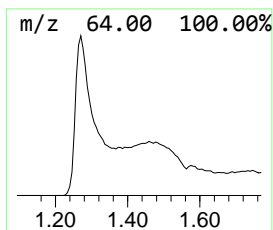
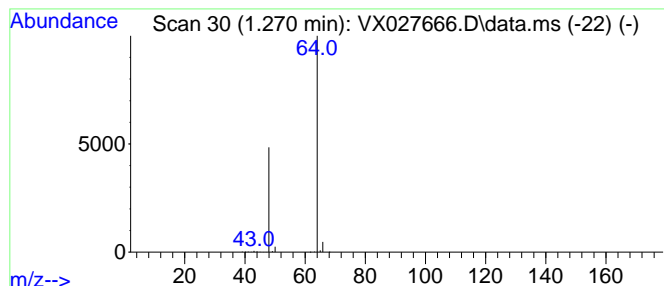
Quant Method : Z:\voasrv\HPCHEM1\MSVOA\_X\Method\82X031722W.M  
 Quant Title : SW846 8260

TIC Library : C:\Database\NIST20.L  
 TIC Integration Parameters: LSCINT.P

\*\*\*\*\*  
 Peak Number 1 Sulfur dioxide Concentration Rank 1

R.T.	EstConc	Area	Relative to ISTD	R.T.
1.270	55.53 ug/l	1068250	Pentafluorobenzene	5.556

Hit#	of	5	Tentative ID	MW	MolForm	CAS#	Qual
1			Sulfur dioxide	64	O2S	007446-09-5	83
2			Aminomethanesulfonic acid	111	CH5NO3S	013881-91-9	74
3			L-Alanine, 3-sulfo-	169	C3H7NO5S	000498-40-8	9
4			Ethene, 1,1-difluoro-	64	C2H2F2	000075-38-7	4
5			Ethyl Chloride	64	C2H5Cl	000075-00-3	3



Data Path : Z:\voasrv\HPCHEM1\MSVOA\_X\Data\VX032322\  
Data File : VX027666.D  
Acq On : 23 Mar 2022 14:40  
Operator : JC/MD  
Sample : N2028-05  
Misc : 5.0mL/MSVOA\_X/WATER  
ALS Vial : 12 Sample Multiplier: 1

Instrument :  
MSVOA\_X  
ClientSampleId :  
MW-118

Quant Method : Z:\voasrv\HPCHEM1\MSVOA\_X\Method\82X031722W.M  
Quant Title : SW846 8260

TIC Library : C:\Database\NIST20.L  
TIC Integration Parameters: LSCINT.P

TIC Top Hit name	RT	EstConc	Units	Response	--Internal Standard--			
					#	RT	Resp	Conc
Sulfur dioxide	1.270	55.5	ug/l	1068250	1	5.556	961920	50.0