

Data Path : Z:\voasrv\HPCHEM1\MSVOA_X\Data\VX032521\
 Data File : VX021500.D
 Acq On : 25 Mar 2021 20:36
 Operator : JC/MD
 Sample : M1776-05
 Misc : 5.0mL/MSVOA_X/WATER
 ALS Vial : 28 Sample Multiplier: 1

Instrument :
 MSVOA_X
 ClientSampleId :

Quant Time: Mar 26 03:19:00 2021
 Quant Method : Z:\voasrv\HPCHEM1\MSVOA_X\Method\82X032421W.M
 Quant Title : SW846 8260
 QLast Update : Wed Mar 24 12:25:26 2021
 Response via : Initial Calibration

Compound	R.T.	QIon	Response	Conc	Units	Dev(Min)

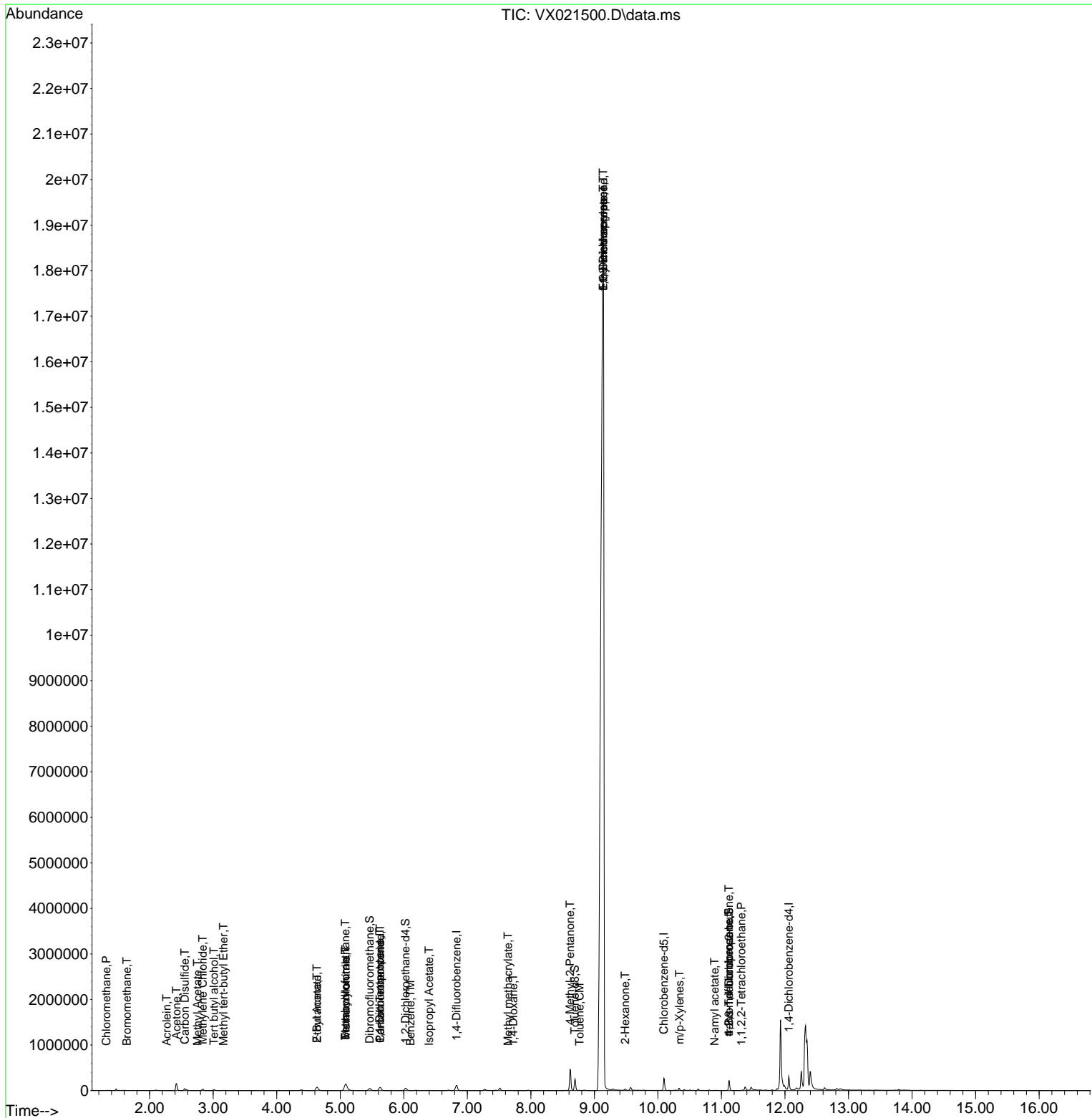
Internal Standards						
1) Pentafluorobenzene	5.629	168	61056	50.00	ug/l	0.00
34) 1,4-Difluorobenzene	6.829	114	108435	50.00	ug/l	0.00
63) Chlorobenzene-d5	10.094	117	113286	50.00	ug/l	0.00
72) 1,4-Dichlorobenzene-d4	12.059	152	52774	50.00	ug/l	0.00
System Monitoring Compounds						
33) 1,2-Dichloroethane-d4	6.029	65	51039	50.24	ug/l	0.00
Spiked Amount	50.000	Range 78 - 117	Recovery	=	100.48%	
35) Dibromofluoromethane	5.464	113	38625	50.15	ug/l	0.00
Spiked Amount	50.000	Range 75 - 124	Recovery	=	100.30%	
50) Toluene-d8	8.694	98	143313	52.21	ug/l	0.00
Spiked Amount	50.000	Range 92 - 112	Recovery	=	104.42%	
62) 4-Bromofluorobenzene	11.118	95	57882	54.24	ug/l	0.00
Spiked Amount	50.000	Range 83 - 123	Recovery	=	108.48%	
Target Compounds						
						Qvalue
3) Chloromethane	1.317	50	1966	2.59	ug/l	93
5) Bromomethane	1.640	94	113	0.41	ug/l #	2
11) Tert butyl alcohol	3.011	59	20269	120.69	ug/l	96
13) Acrolein	2.270	56	18	4.51	ug/l #	14
16) Acetone	2.423	43	173326	451.24	ug/l #	87
17) Carbon Disulfide	2.552	76	52791	30.55	ug/l	99
18) Methyl Acetate	2.752	43	1728	1.56	ug/l #	81
19) Methyl tert-butyl Ether	3.164	73	4845	2.11	ug/l	91
20) Methylene Chloride	2.834	84	14002	18.68	ug/l #	80
25) 2-Butanone	4.635	43	131930	226.58	ug/l	91
28) Bromochloromethane	5.082	49	942	1.44	ug/l #	9
29) Tetrahydrofuran	5.082	42	7909	20.95	ug/l #	63
36) 1,1-Dichloropropene	5.623	75	5568	5.24	ug/l #	50
37) Ethyl Acetate	4.635	43	131930	107.39	ug/l #	65
38) Carbon Tetrachloride	5.629	117	6721	5.89	ug/l #	17
40) Benzene	6.105	78	678	0.22	ug/l	92
41) Methacrylonitrile	5.088	41	38145	53.53	ug/l #	42
43) Isopropyl Acetate	6.400	43	1955	0.98	ug/l #	65
48) Methyl methacrylate	7.641	41	1714	1.61	ug/l #	27
49) 1,4-Dioxane	7.723	88	118	6.19	ug/l #	24
51) 4-Methyl-2-Pentanone	8.617	43	273745	223.11	ug/l	88
52) Toluene	8.765	92	1440	0.77	ug/l	95
53) t-1,3-Dichloropropene	9.141	75	1863	1.52	ug/l #	1
56) Ethyl methacrylate	9.141	69	5822854	4202.55	ug/l #	54
57) 1,3-Dichloropropane	9.141	76	339	0.25	ug/l #	1
59) 2-Hexanone	9.482	43	13931	15.12	ug/l	81
68) m/p-Xylenes	10.341	106	316	0.21	ug/l #	72
74) N-amyl acetate	10.894	43	2124	1.18	ug/l #	64
75) 1,1,2,2-Tetrachloroethane	11.312	83	374	0.29	ug/l #	1
76) 1,2,3-Trichloropropane	11.118	75	31975	26.03	ug/l #	38
81) trans-1,4-Dichloro-2-b...	11.118	75	31975	79.27	ug/l #	12

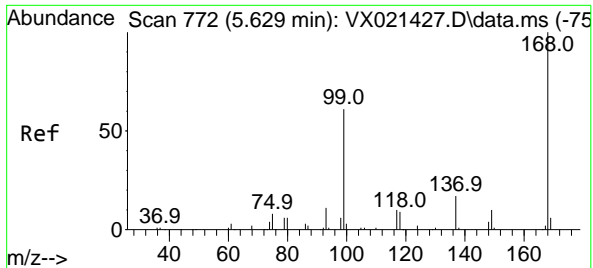
(#) = qualifier out of range (m) = manual integration (+) = signals summed

Data Path : Z:\voasrv\HPCHEM1\MSVOA_X\Data\VX032521\
 Data File : VX021500.D
 Acq On : 25 Mar 2021 20:36
 Operator : JC/MD
 Sample : M1776-05
 Misc : 5.0mL/MSVOA_X/WATER
 ALS Vial : 28 Sample Multiplier: 1

Instrument :
 MSVOA_X
 ClientSampleId :

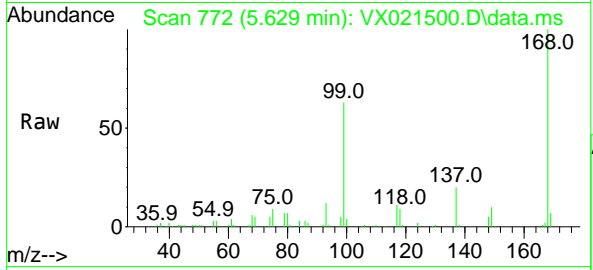
Quant Time: Mar 26 03:19:00 2021
 Quant Method : Z:\voasrv\HPCHEM1\MSVOA_X\Method\82X032421W.M
 Quant Title : SW846 8260
 QLast Update : Wed Mar 24 12:25:26 2021
 Response via : Initial Calibration



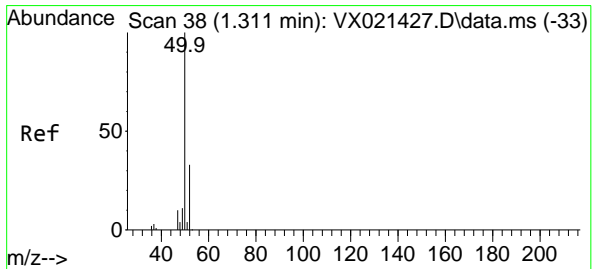
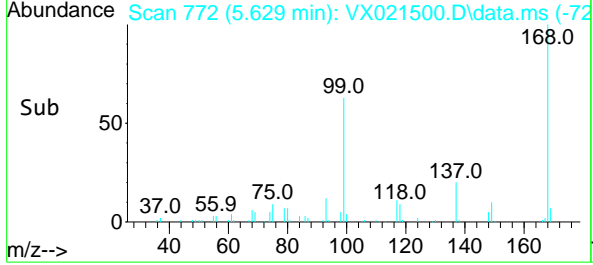
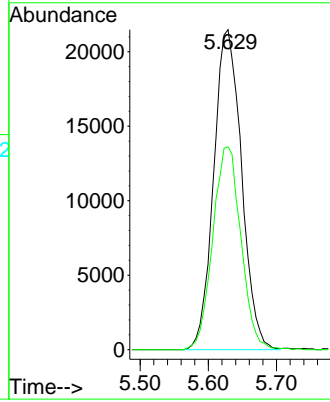


#1
 Pentafluorobenzene
 Concen: 50.00 ug/l
 RT: 5.629 min Scan# 772
 Delta R.T. -0.000 min
 Lab File: VX021500.D
 Acq: 25 Mar 2021 20:36

Instrument :
 MSVOA_X
 ClientSampled :

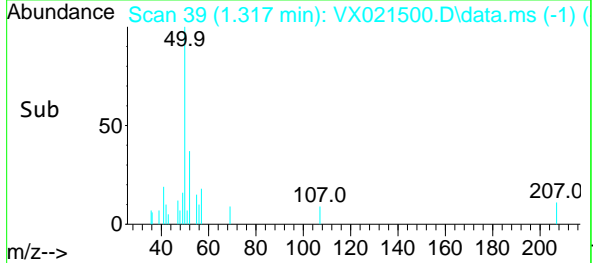
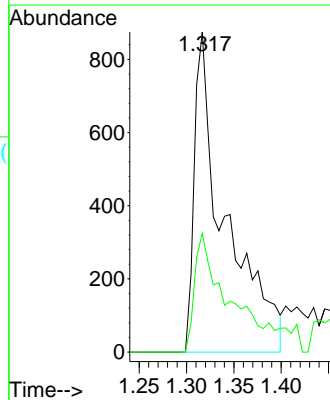
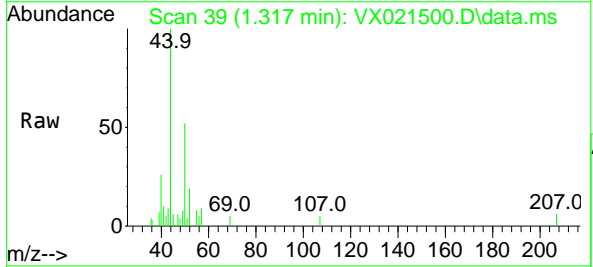


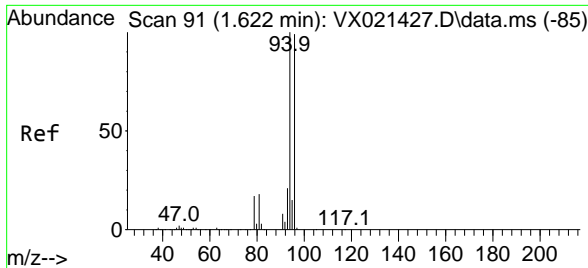
Tgt Ion:168 Resp: 61056
 Ion Ratio Lower Upper
 168 100
 99 63.4 45.8 68.6



#3
 Chloromethane
 Concen: 2.59 ug/l
 RT: 1.317 min Scan# 39
 Delta R.T. 0.006 min
 Lab File: VX021500.D
 Acq: 25 Mar 2021 20:36

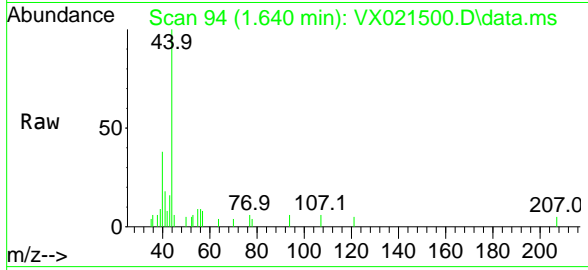
Tgt Ion: 50 Resp: 1966
 Ion Ratio Lower Upper
 50 100
 52 37.0 26.4 39.6



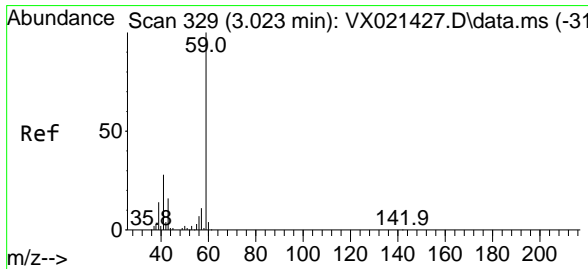
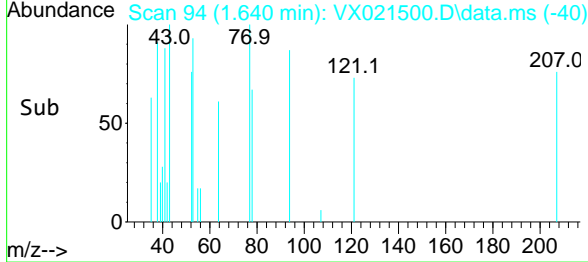
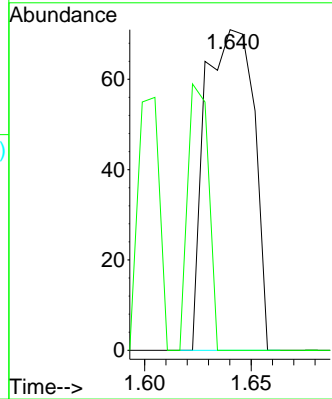


#5
 Bromomethane
 Concen: 0.41 ug/l
 RT: 1.640 min Scan# 94
 Delta R.T. 0.018 min
 Lab File: VX021500.D
 Acq: 25 Mar 2021 20:36

Instrument :
 MSVOA_X
 ClientSampled :

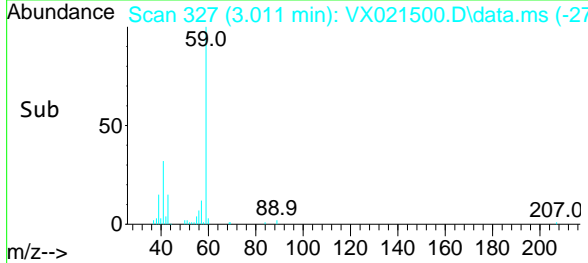
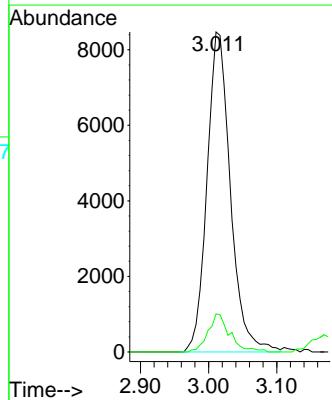
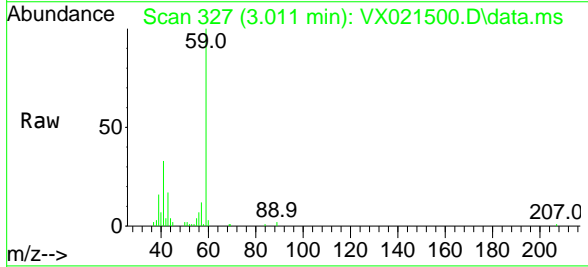


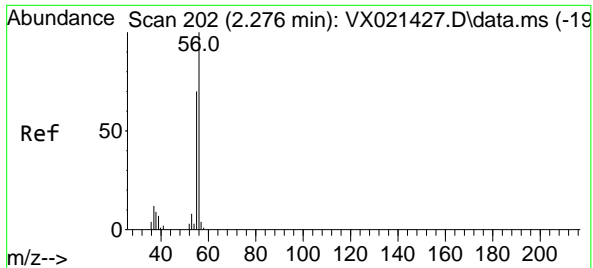
Tgt Ion: 94 Resp: 113
 Ion Ratio Lower Upper
 94 100
 96 0.0 76.4 114.6#



#11
 Tert butyl alcohol
 Concen: 120.69 ug/l
 RT: 3.011 min Scan# 327
 Delta R.T. -0.012 min
 Lab File: VX021500.D
 Acq: 25 Mar 2021 20:36

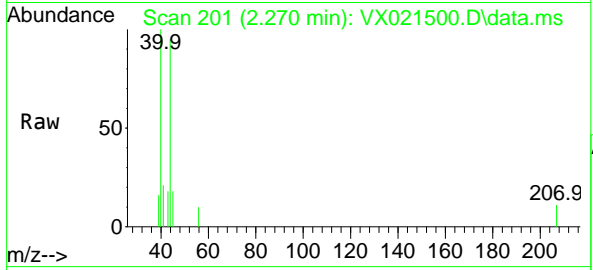
Tgt Ion: 59 Resp: 20269
 Ion Ratio Lower Upper
 59 100
 57 11.1 7.8 11.8



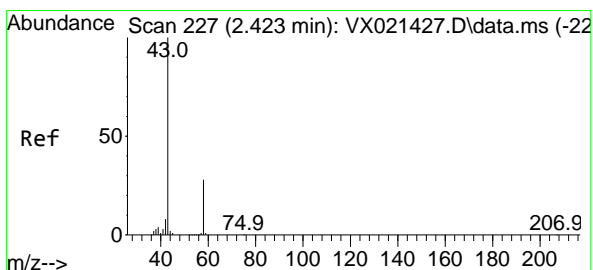
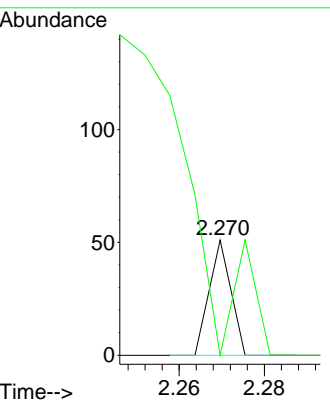
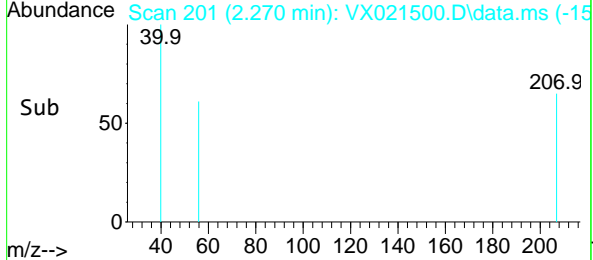


#13
 Acrolein
 Concen: 4.51 ug/l
 RT: 2.270 min Scan# 201
 Delta R.T. -0.006 min
 Lab File: VX021500.D
 Acq: 25 Mar 2021 20:36

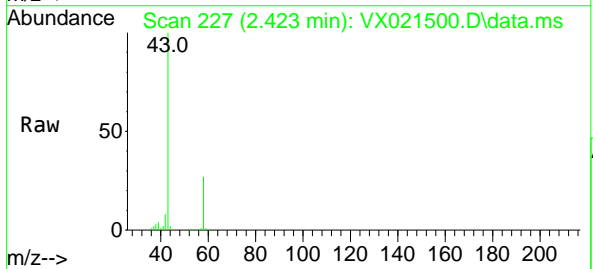
Instrument :
 MSVOA_X
 ClientSampled :



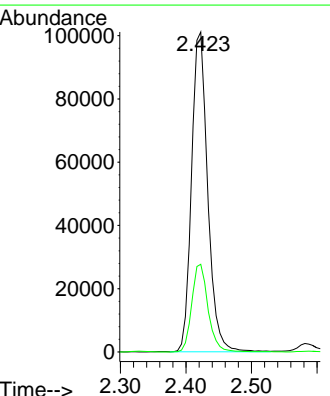
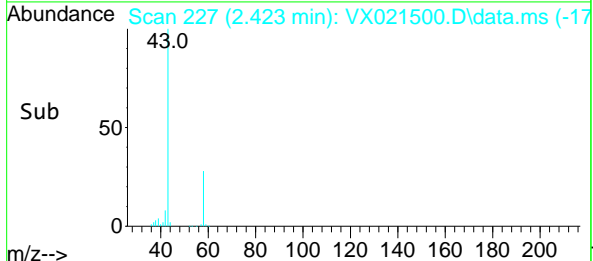
Tgt Ion: 56 Resp: 18
 Ion Ratio Lower Upper
 56 100
 55 0.0 56.4 84.6#

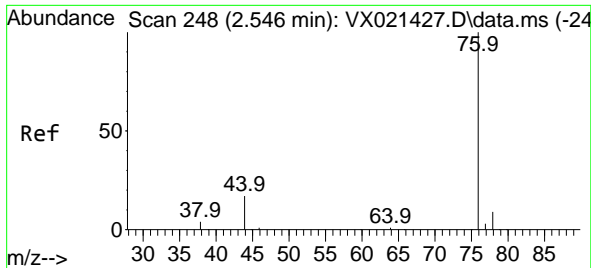


#16
 Acetone
 Concen: 451.24 ug/l
 RT: 2.423 min Scan# 227
 Delta R.T. -0.000 min
 Lab File: VX021500.D
 Acq: 25 Mar 2021 20:36



Tgt Ion: 43 Resp: 173326
 Ion Ratio Lower Upper
 43 100
 58 27.4 27.8 41.8#

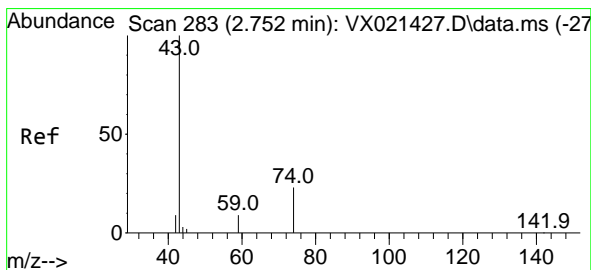
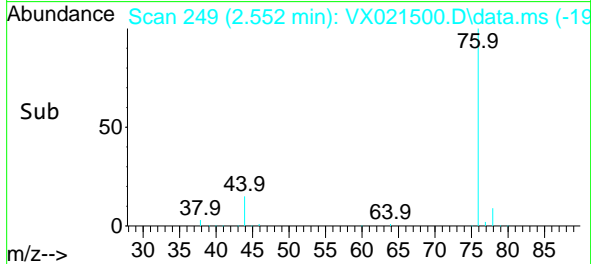
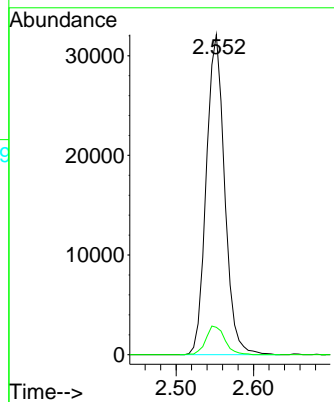
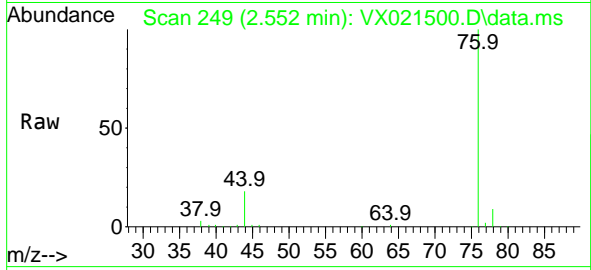




#17
 Carbon Disulfide
 Concen: 30.55 ug/l
 RT: 2.552 min Scan# 249
 Delta R.T. 0.006 min
 Lab File: VX021500.D
 Acq: 25 Mar 2021 20:36

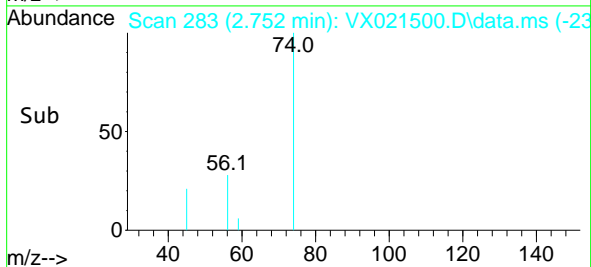
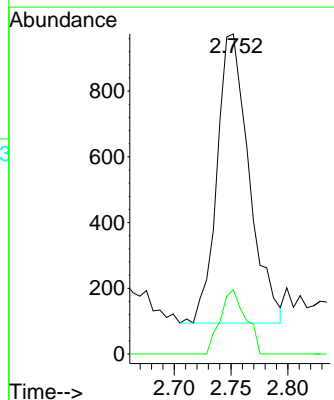
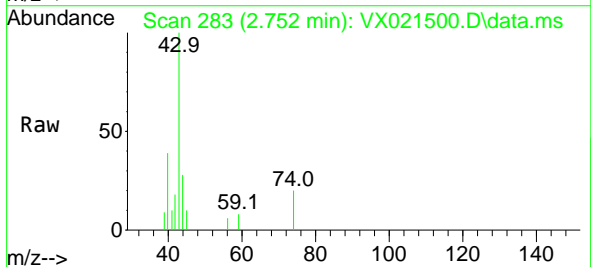
Instrument :
 MSVOA_X
 ClientSampled :

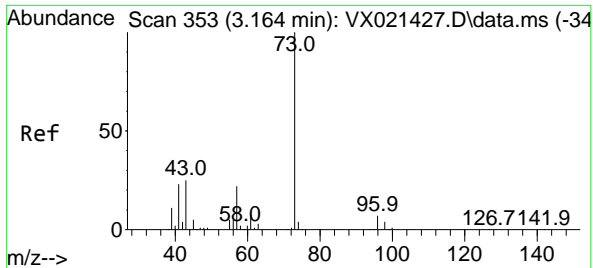
Tgt Ion: 76 Resp: 52791
 Ion Ratio Lower Upper
 76 100
 78 8.6 7.2 10.8



#18
 Methyl Acetate
 Concen: 1.56 ug/l
 RT: 2.752 min Scan# 283
 Delta R.T. 0.000 min
 Lab File: VX021500.D
 Acq: 25 Mar 2021 20:36

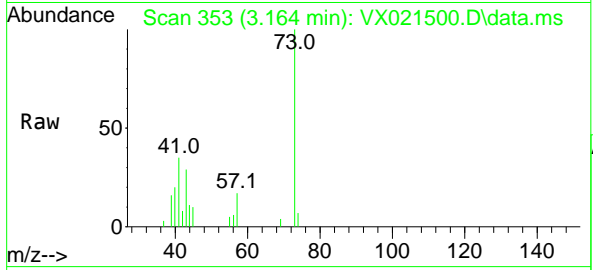
Tgt Ion: 43 Resp: 1728
 Ion Ratio Lower Upper
 43 100
 74 17.7 21.9 32.9#





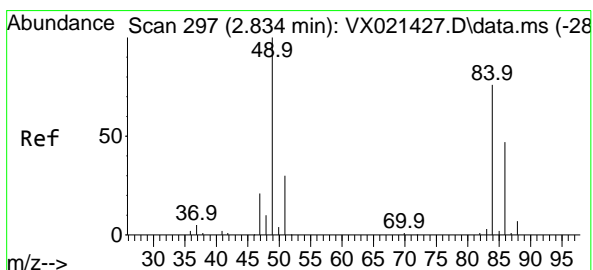
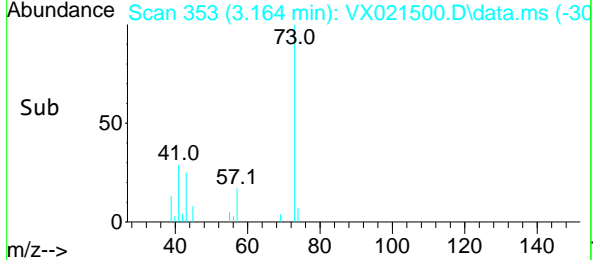
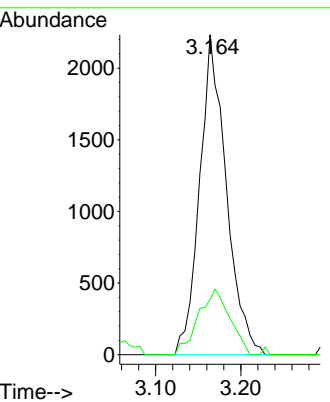
#19
 Methyl tert-butyl Ether
 Concen: 2.11 ug/l
 RT: 3.164 min Scan# 353
 Delta R.T. -0.000 min
 Lab File: VX021500.D
 Acq: 25 Mar 2021 20:36

Instrument :
 MSVOA_X
 ClientSampled :

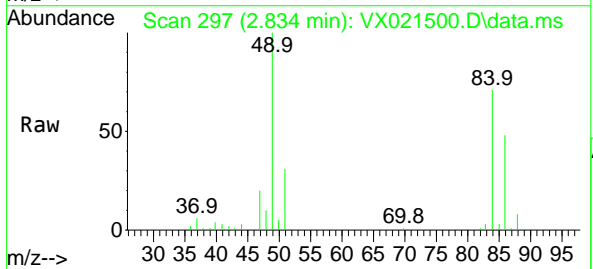


Tgt Ion: 73 Resp: 4845

Ion	Ratio	Lower	Upper
73	100		
57	17.2	17.1	25.7

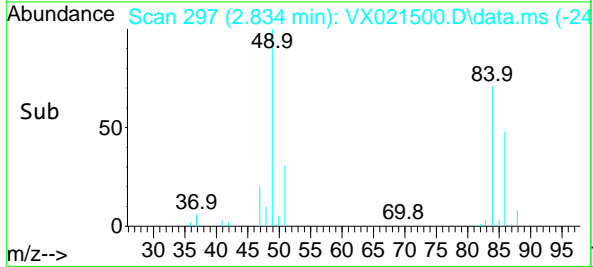
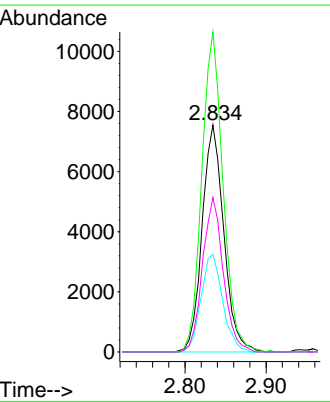


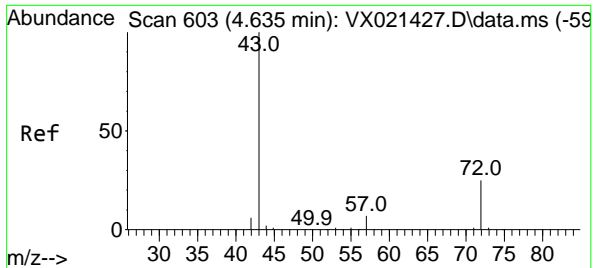
#20
 Methylene Chloride
 Concen: 18.68 ug/l
 RT: 2.834 min Scan# 297
 Delta R.T. 0.000 min
 Lab File: VX021500.D
 Acq: 25 Mar 2021 20:36



Tgt Ion: 84 Resp: 14002

Ion	Ratio	Lower	Upper
84	100		
49	141.1	88.6	132.8#
51	43.1	27.0	40.6#
86	68.0	50.3	75.5

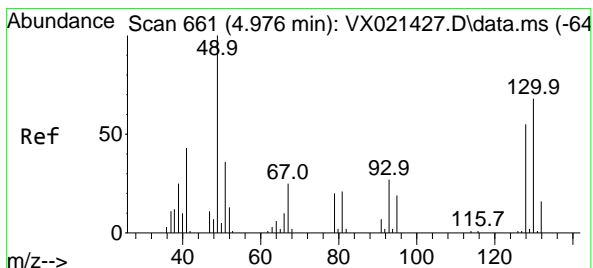
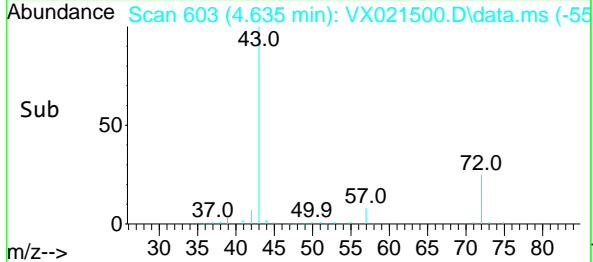
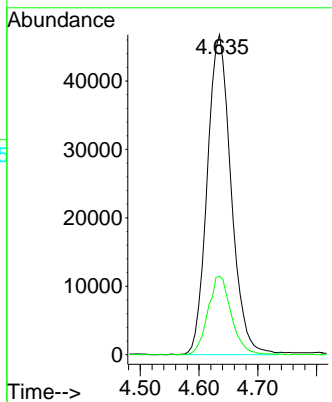
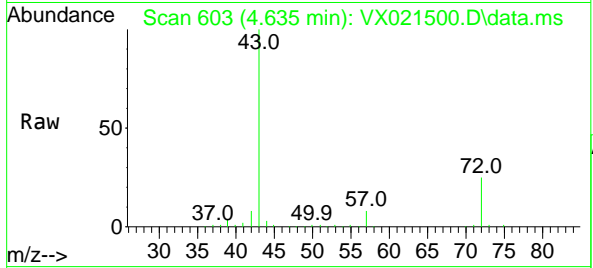




#25
 2-Butanone
 Concen: 226.58 ug/l
 RT: 4.635 min Scan# 603
 Delta R.T. -0.000 min
 Lab File: VX021500.D
 Acq: 25 Mar 2021 20:36

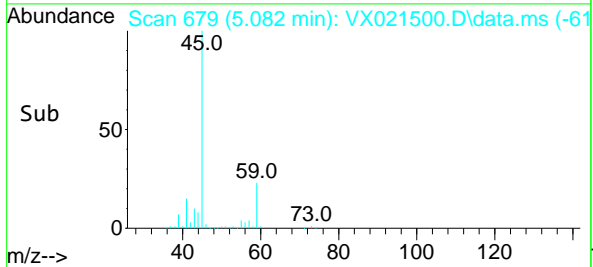
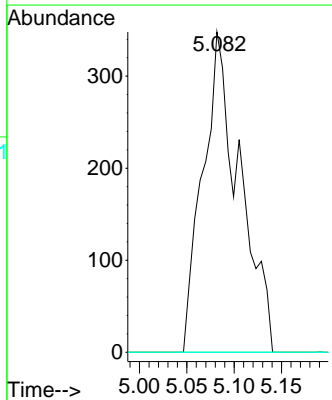
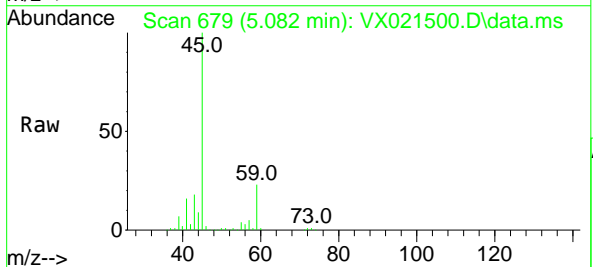
Instrument :
 MSVOA_X
 ClientSampled :

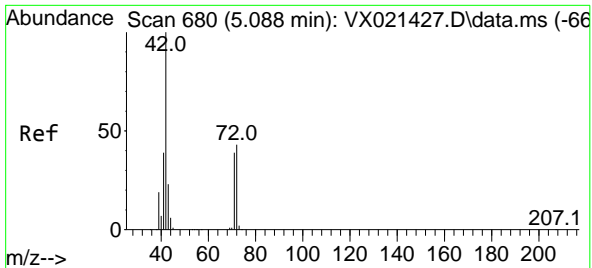
Tgt Ion: 43 Resp: 131930
 Ion Ratio Lower Upper
 43 100
 72 24.5 23.7 35.5



#28
 Bromochloromethane
 Concen: 1.44 ug/l
 RT: 5.082 min Scan# 679
 Delta R.T. 0.106 min
 Lab File: VX021500.D
 Acq: 25 Mar 2021 20:36

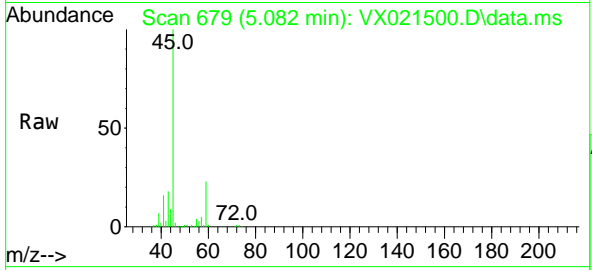
Tgt Ion: 49 Resp: 942
 Ion Ratio Lower Upper
 49 100
 129 0.0 0.0 4.0
 130 0.0 68.2 102.2#





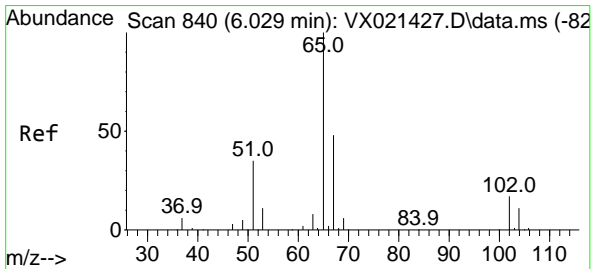
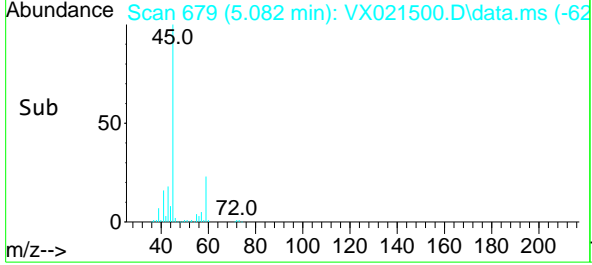
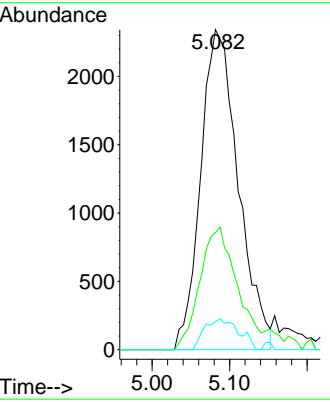
#29
 Tetrahydrofuran
 Concen: 20.95 ug/l
 RT: 5.082 min Scan# 679
 Delta R.T. -0.006 min
 Lab File: VX021500.D
 Acq: 25 Mar 2021 20:36

Instrument :
 MSVOA_X
 ClientSampled :



Tgt Ion: 42 Resp: 7909

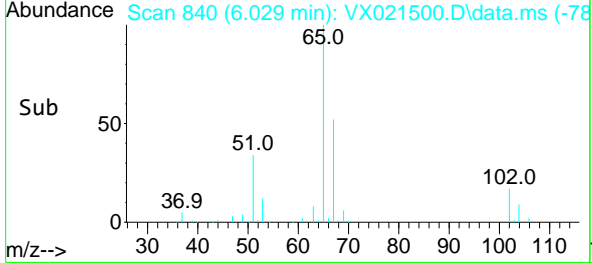
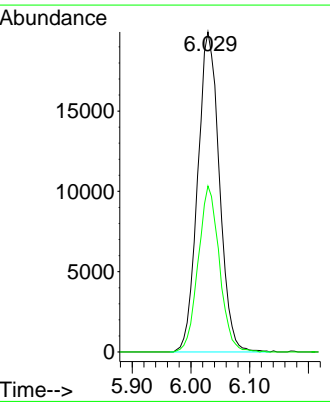
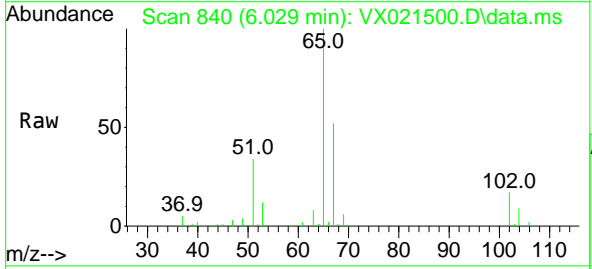
Ion	Ratio	Lower	Upper
42	100		
72	40.4	41.7	62.5#
71	8.8	38.4	57.6#

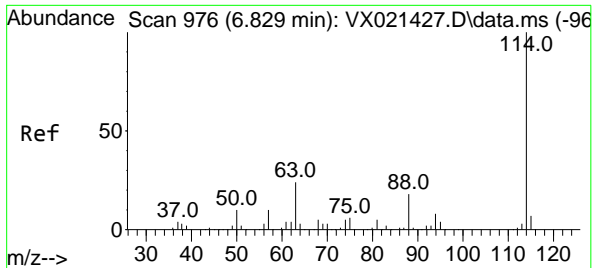


#33
 1,2-Dichloroethane-d4
 Concen: 50.24 ug/l
 RT: 6.029 min Scan# 840
 Delta R.T. -0.000 min
 Lab File: VX021500.D
 Acq: 25 Mar 2021 20:36

Tgt Ion: 65 Resp: 51039

Ion	Ratio	Lower	Upper
65	100		
67	50.8	0.0	105.4



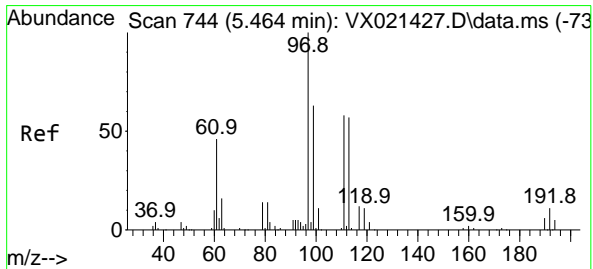
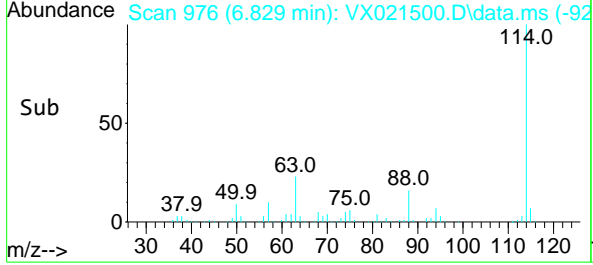
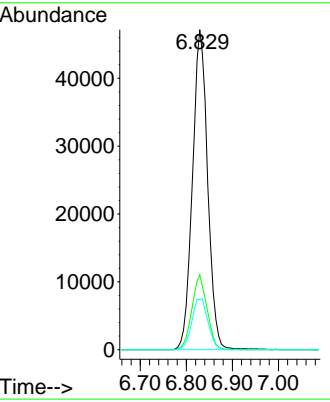
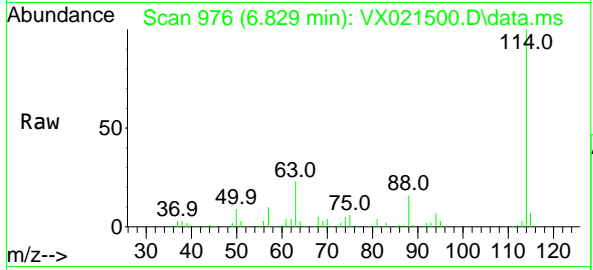


#34
 1,4-Difluorobenzene
 Concen: 50.00 ug/l
 RT: 6.829 min Scan# 976
 Delta R.T. 0.000 min
 Lab File: VX021500.D
 Acq: 25 Mar 2021 20:36

Instrument :
 MSVOA_X
 ClientSampled :

Tgt Ion:114 Resp: 108435

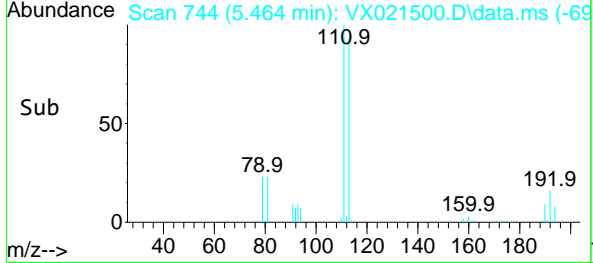
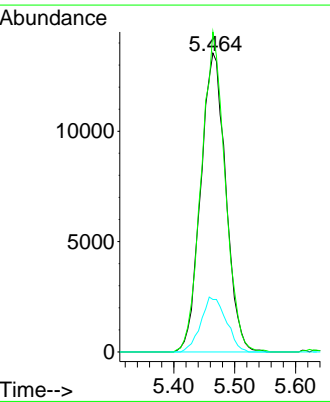
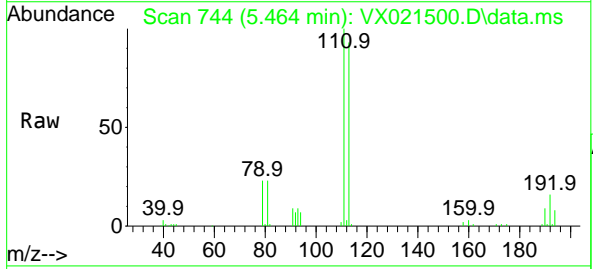
Ion	Ratio	Lower	Upper
114	100		
63	23.4	0.0	40.8
88	15.7	0.0	32.8

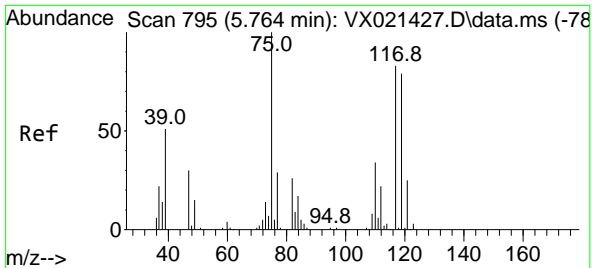


#35
 Dibromofluoromethane
 Concen: 50.15 ug/l
 RT: 5.464 min Scan# 744
 Delta R.T. 0.000 min
 Lab File: VX021500.D
 Acq: 25 Mar 2021 20:36

Tgt Ion:113 Resp: 38625

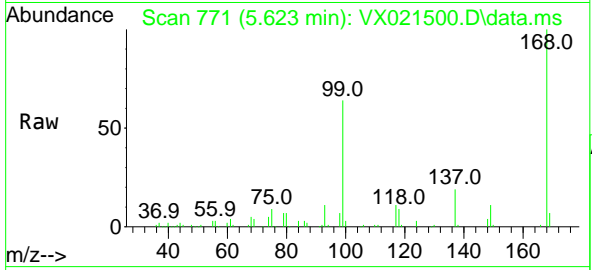
Ion	Ratio	Lower	Upper
113	100		
111	102.2	81.9	122.9
192	18.6	16.7	25.1





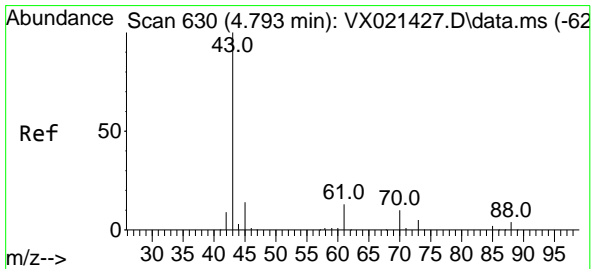
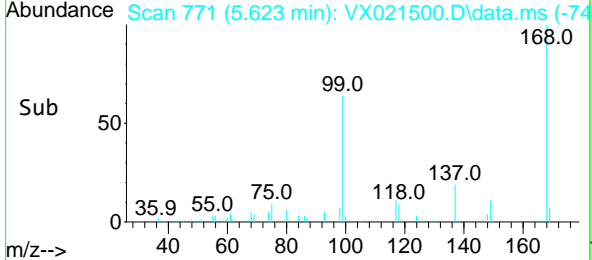
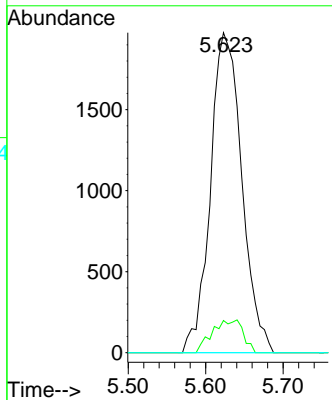
#36
 1,1-Dichloropropene
 Concen: 5.24 ug/l
 RT: 5.623 min Scan# 771
 Delta R.T. -0.141 min
 Lab File: VX021500.D
 Acq: 25 Mar 2021 20:36

Instrument :
 MSVOA_X
 ClientSampled :

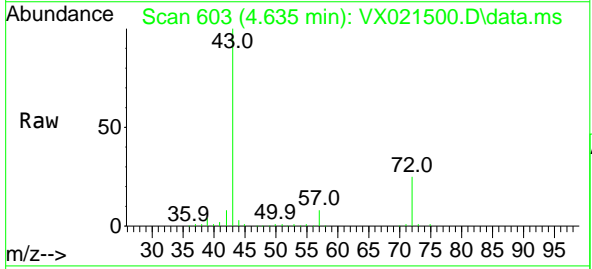


Tgt Ion: 75 Resp: 5568

Ion	Ratio	Lower	Upper
75	100		
110	10.0	18.1	54.4#
77	0.0	25.3	37.9#

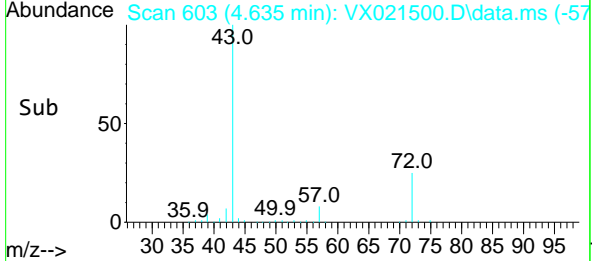
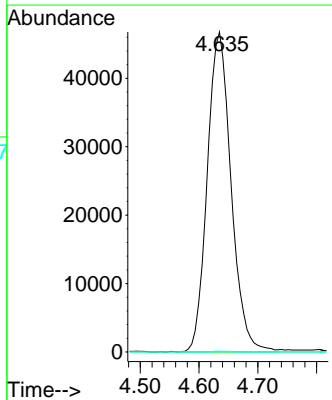


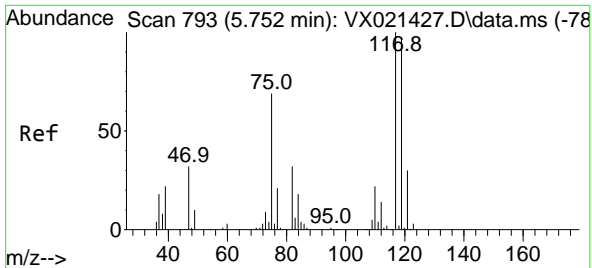
#37
 Ethyl Acetate
 Concen: 107.39 ug/l
 RT: 4.635 min Scan# 603
 Delta R.T. -0.158 min
 Lab File: VX021500.D
 Acq: 25 Mar 2021 20:36



Tgt Ion: 43 Resp: 131930

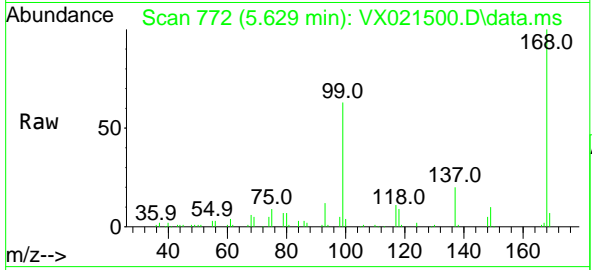
Ion	Ratio	Lower	Upper
43	100		
61	0.0	12.8	19.2#
70	0.2	10.5	15.7#



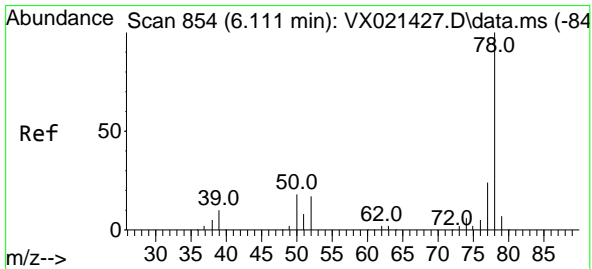
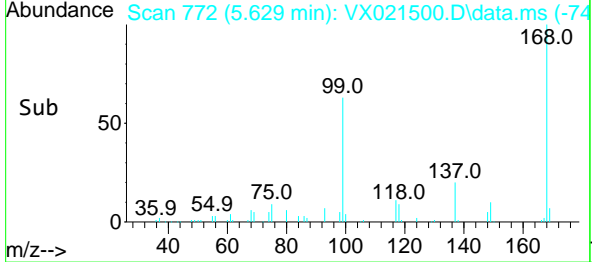
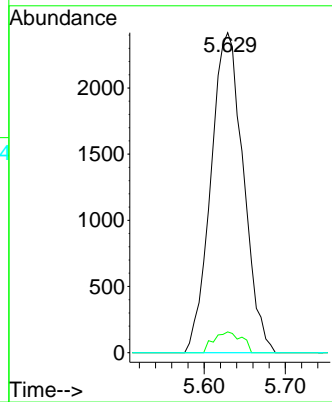


#38
 Carbon Tetrachloride
 Concen: 5.89 ug/l
 RT: 5.629 min Scan# 772
 Delta R.T. -0.123 min
 Lab File: VX021500.D
 Acq: 25 Mar 2021 20:36

Instrument :
 MSVOA_X
 ClientSampled :

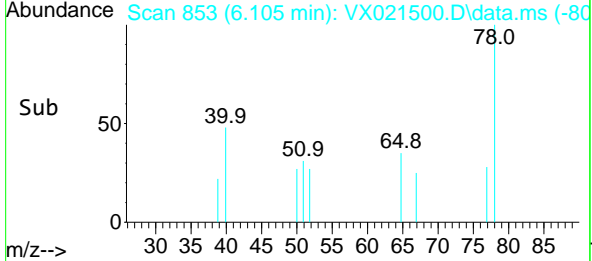
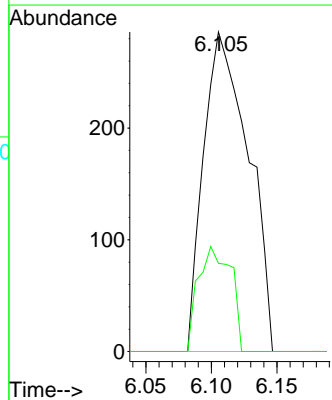
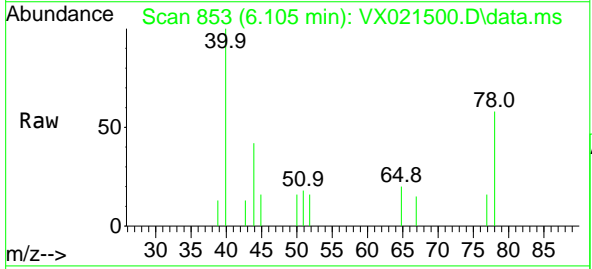


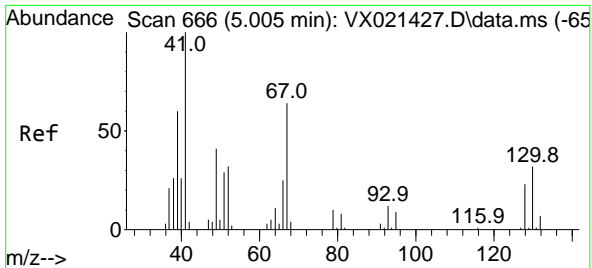
Tgt Ion:117 Resp: 6721
 Ion Ratio Lower Upper
 117 100
 119 6.5 76.2 114.2#
 121 0.0 24.8 37.2#



#40
 Benzene
 Concen: 0.22 ug/l
 RT: 6.105 min Scan# 853
 Delta R.T. -0.006 min
 Lab File: VX021500.D
 Acq: 25 Mar 2021 20:36

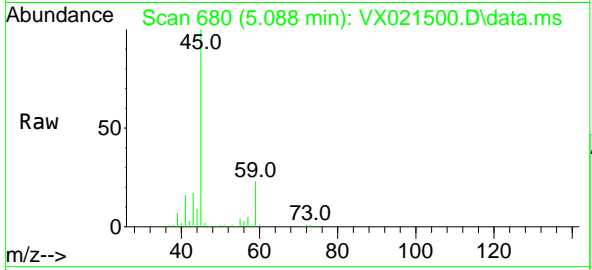
Tgt Ion: 78 Resp: 678
 Ion Ratio Lower Upper
 78 100
 77 27.6 18.9 28.3





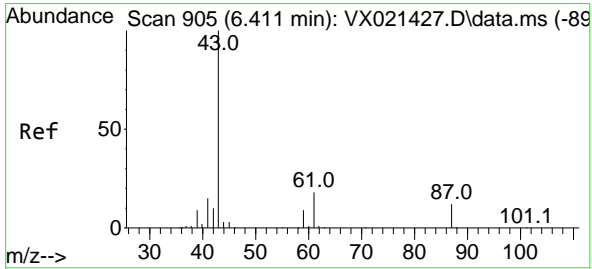
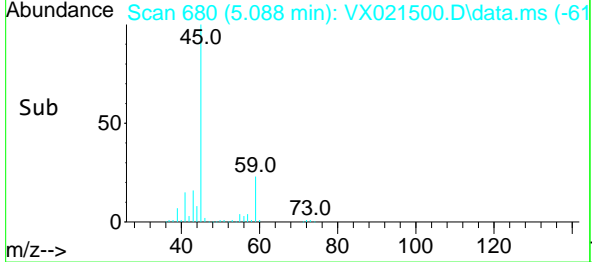
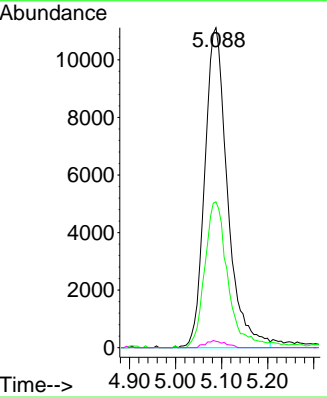
#41
 Methacrylonitrile
 Concen: 53.53 ug/l
 RT: 5.088 min Scan# 680
 Delta R.T. 0.083 min
 Lab File: VX021500.D
 Acq: 25 Mar 2021 20:36

Instrument :
 MSVOA_X
 ClientSampled :

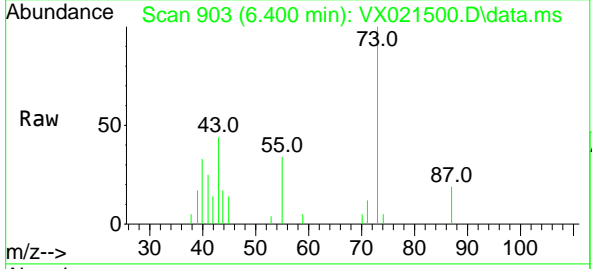


Tgt Ion: 41 Resp: 38145

Ion	Ratio	Lower	Upper
41	100		
39	46.0	42.5	63.7
67	0.0	65.0	97.6#
52	1.9	25.3	37.9#

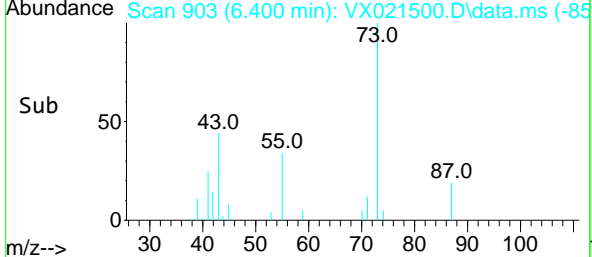
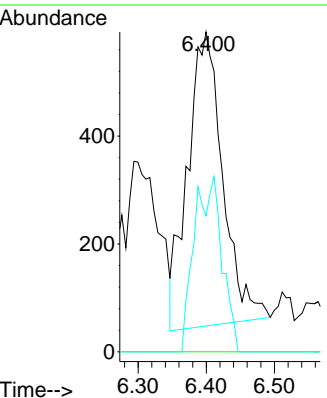


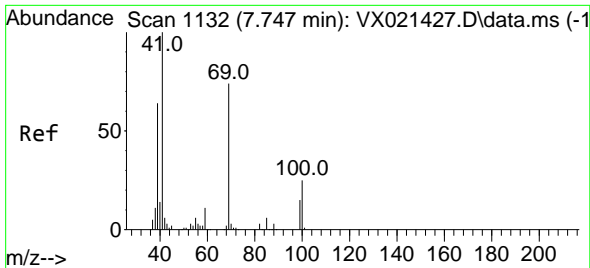
#43
 Isopropyl Acetate
 Concen: 0.98 ug/l
 RT: 6.400 min Scan# 903
 Delta R.T. -0.011 min
 Lab File: VX021500.D
 Acq: 25 Mar 2021 20:36



Tgt Ion: 43 Resp: 1955

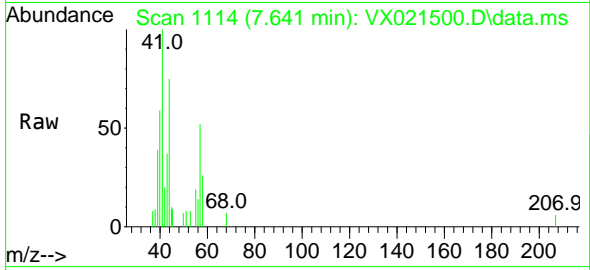
Ion	Ratio	Lower	Upper
43	100		
61	0.0	18.2	27.4#
87	23.2	12.5	18.7#



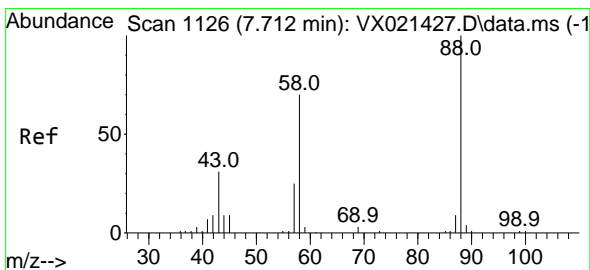
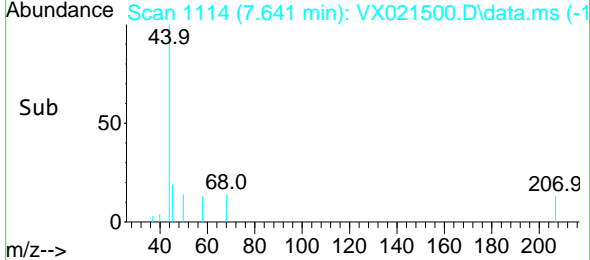
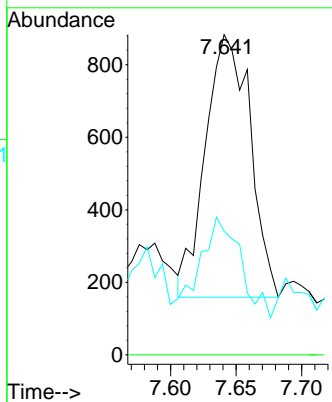


#48
 Methyl methacrylate
 Concen: 1.61 ug/l
 RT: 7.641 min Scan# 1114
 Delta R.T. -0.106 min
 Lab File: VX021500.D
 Acq: 25 Mar 2021 20:36

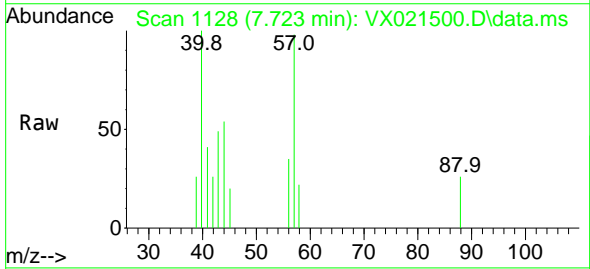
Instrument :
 MSVOA_X
 ClientSampled :



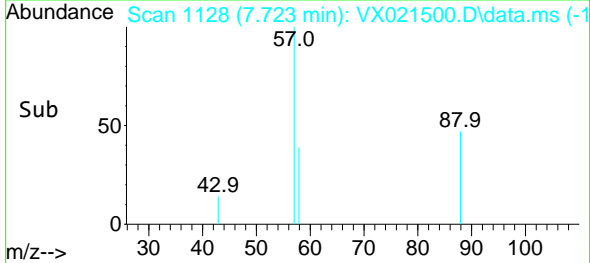
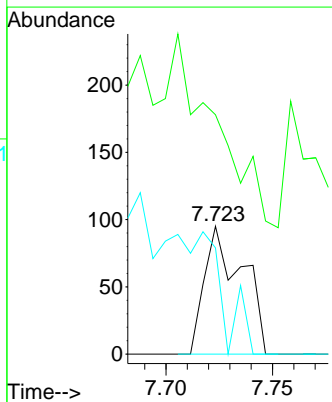
Tgt Ion: 41 Resp: 1714
 Ion Ratio Lower Upper
 41 100
 69 0.0 76.0 114.0#
 39 34.0 44.6 67.0#

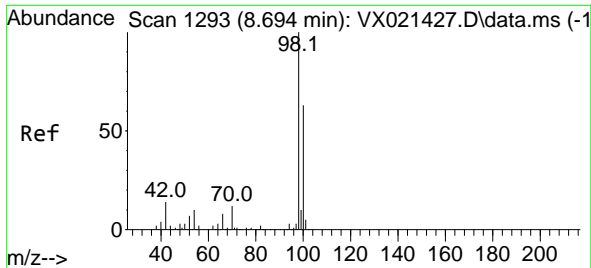


#49
 1,4-Dioxane
 Concen: 6.19 ug/l
 RT: 7.723 min Scan# 1128
 Delta R.T. 0.011 min
 Lab File: VX021500.D
 Acq: 25 Mar 2021 20:36



Tgt Ion: 88 Resp: 118
 Ion Ratio Lower Upper
 88 100
 43 0.0 23.2 34.8#
 58 0.0 55.0 82.4#

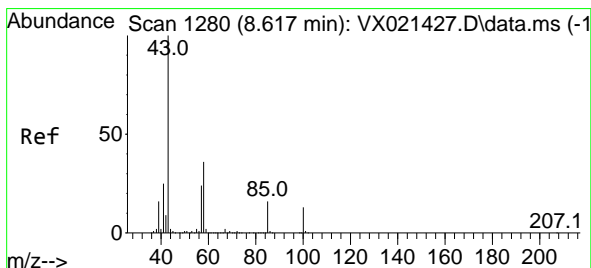
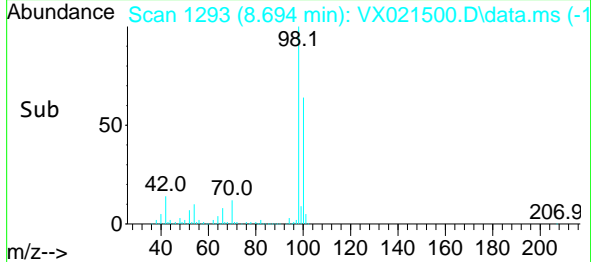
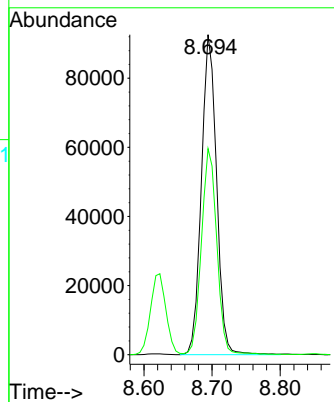
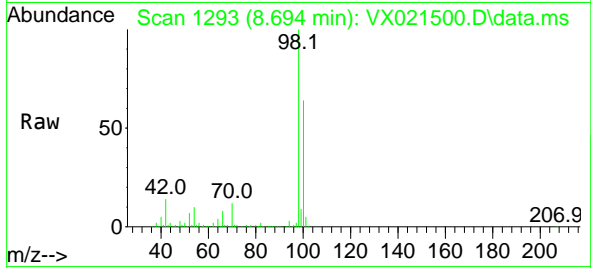




#50
 Toluene-d8
 Concen: 52.21 ug/l
 RT: 8.694 min Scan# 1293
 Delta R.T. -0.000 min
 Lab File: VX021500.D
 Acq: 25 Mar 2021 20:36

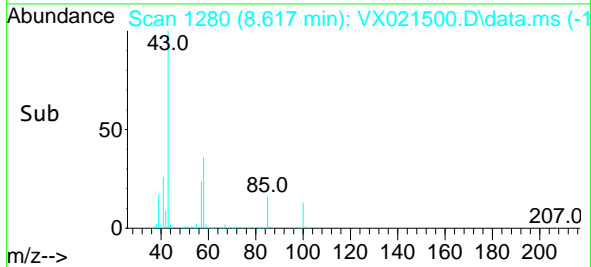
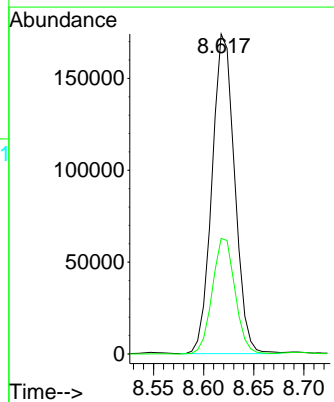
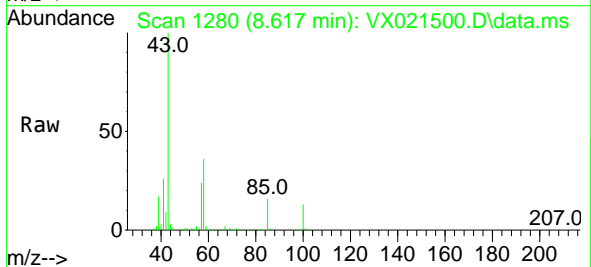
Instrument :
 MSVOA_X
 ClientSampled :

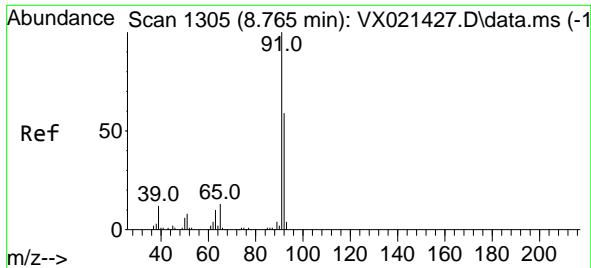
Tgt Ion: 98 Resp: 143313
 Ion Ratio Lower Upper
 98 100
 100 65.2 51.9 77.9



#51
 4-Methyl-2-Pentanone
 Concen: 223.11 ug/l
 RT: 8.617 min Scan# 1280
 Delta R.T. 0.000 min
 Lab File: VX021500.D
 Acq: 25 Mar 2021 20:36

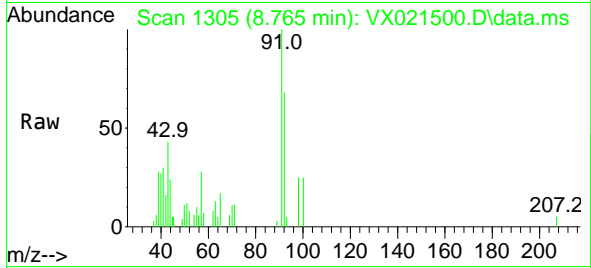
Tgt Ion: 43 Resp: 273745
 Ion Ratio Lower Upper
 43 100
 58 36.3 35.4 53.0



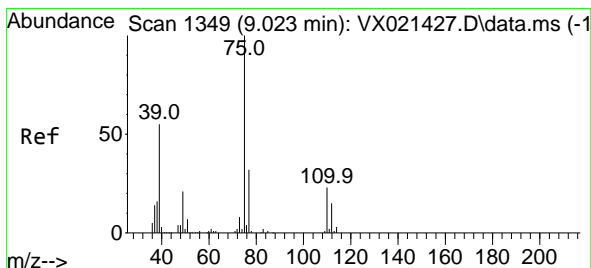
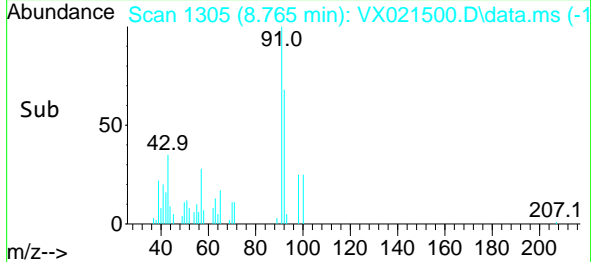
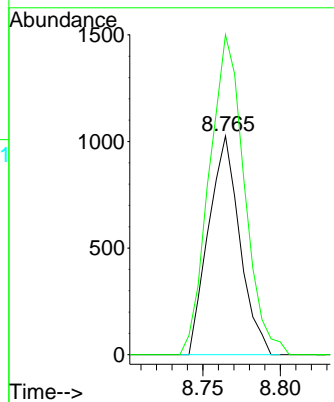


#52
 Toluene
 Concen: 0.77 ug/l
 RT: 8.765 min Scan# 1305
 Delta R.T. -0.000 min
 Lab File: VX021500.D
 Acq: 25 Mar 2021 20:36

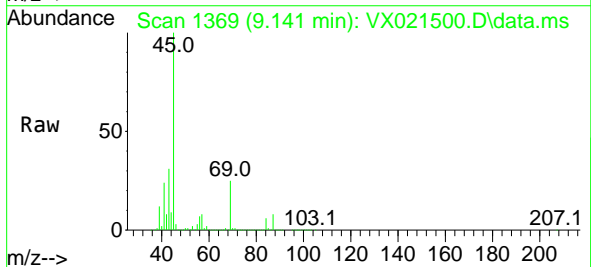
Instrument :
 MSVOA_X
 ClientSampled :



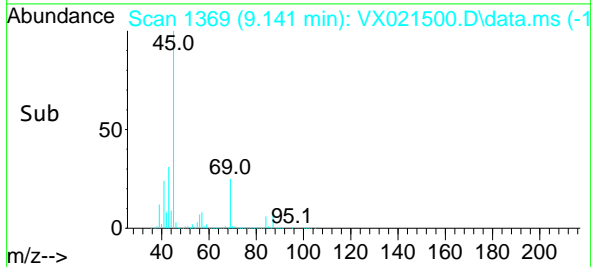
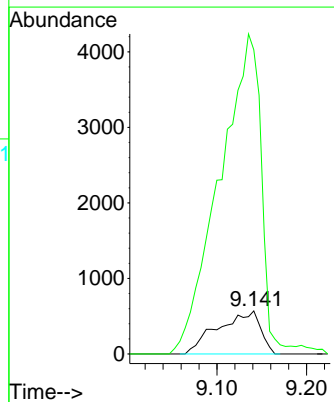
Tgt Ion: 92 Resp: 1440
 Ion Ratio Lower Upper
 92 100
 91 164.1 137.1 205.7

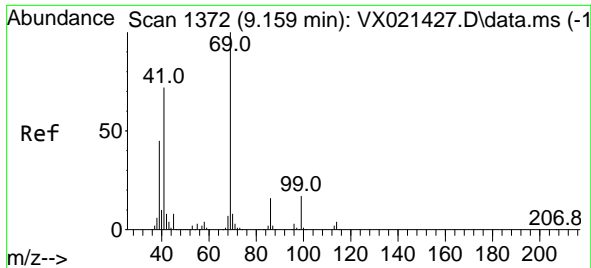


#53
 t-1,3-Dichloropropene
 Concen: 1.52 ug/l
 RT: 9.141 min Scan# 1369
 Delta R.T. 0.118 min
 Lab File: VX021500.D
 Acq: 25 Mar 2021 20:36



Tgt Ion: 75 Resp: 1863
 Ion Ratio Lower Upper
 75 100
 77 686.5 24.9 37.3#



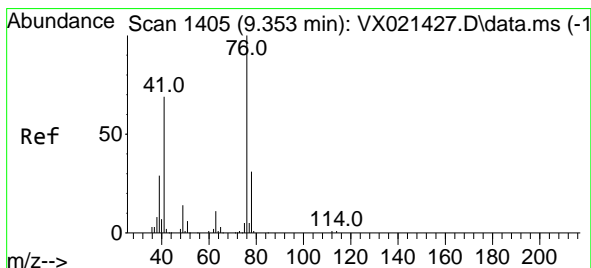
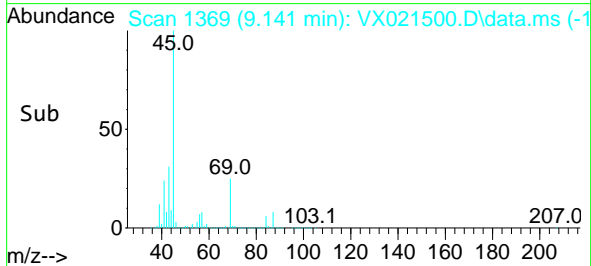
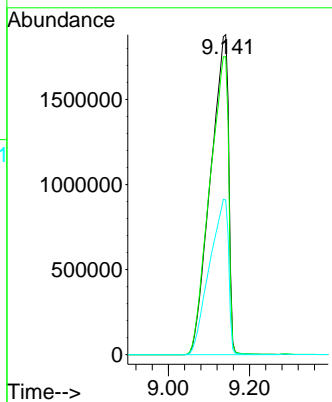
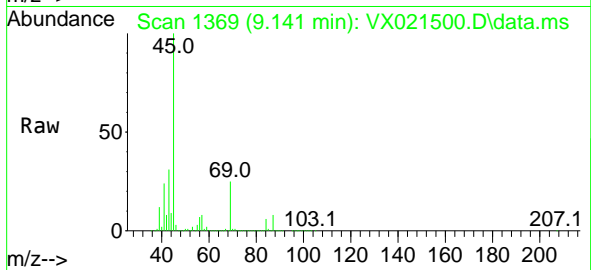


#56
 Ethyl methacrylate
 Concen: 4202.55 ug/l
 RT: 9.141 min Scan# 1369
 Delta R.T. -0.018 min
 Lab File: VX021500.D
 Acq: 25 Mar 2021 20:36

Instrument :
 MSVOA_X
 ClientSampled :

Tgt Ion: 69 Resp: 5822854

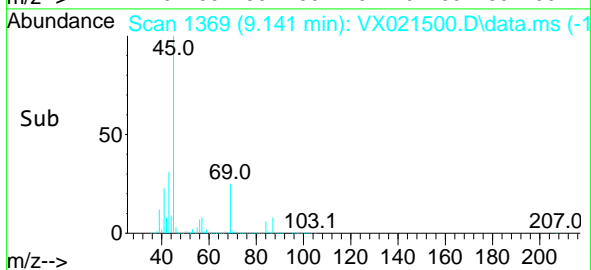
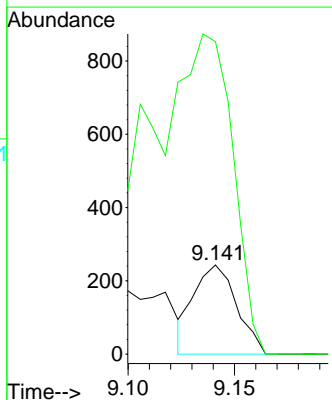
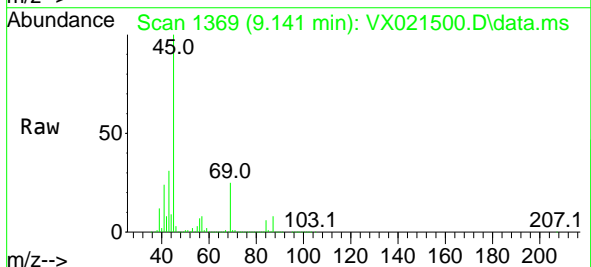
Ion	Ratio	Lower	Upper
69	100		
41	96.8	46.8	70.2#
39	51.2	24.7	37.1#

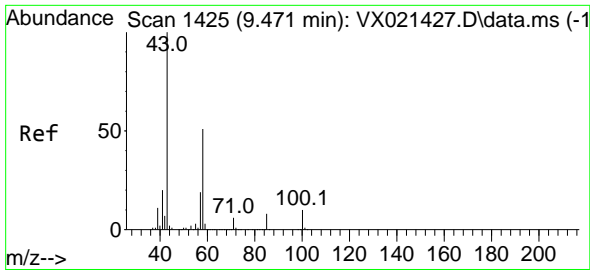


#57
 1,3-Dichloropropane
 Concen: 0.25 ug/l
 RT: 9.141 min Scan# 1369
 Delta R.T. -0.212 min
 Lab File: VX021500.D
 Acq: 25 Mar 2021 20:36

Tgt Ion: 76 Resp: 339

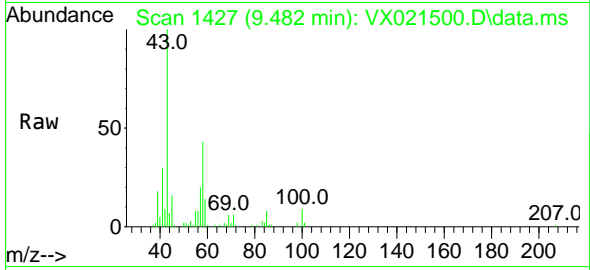
Ion	Ratio	Lower	Upper
76	100		
78	823.0	26.2	39.2#



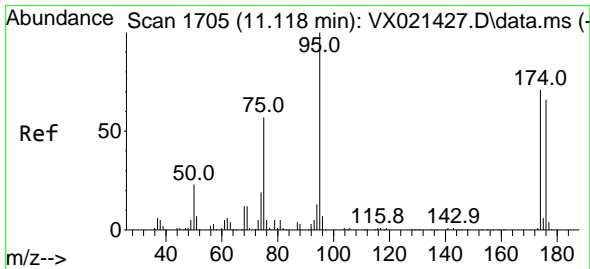
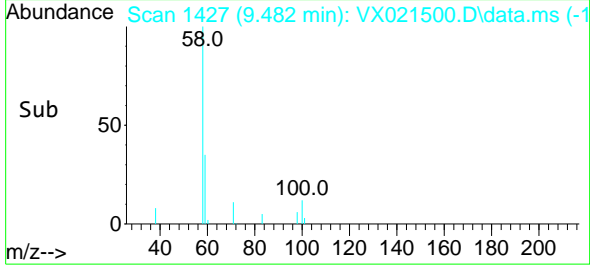
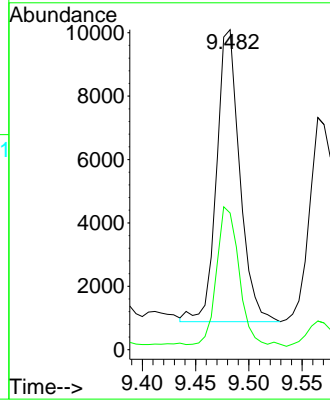


#59
 2-Hexanone
 Concen: 15.12 ug/l
 RT: 9.482 min Scan# 1427
 Delta R.T. 0.011 min
 Lab File: VX021500.D
 Acq: 25 Mar 2021 20:36

Instrument :
 MSVOA_X
 ClientSampled :

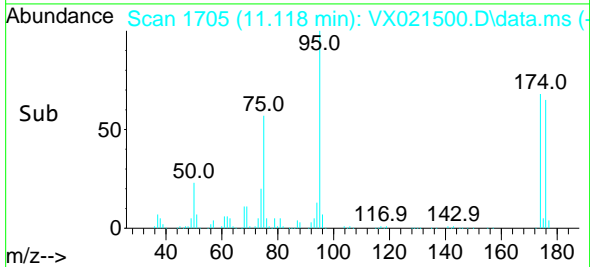
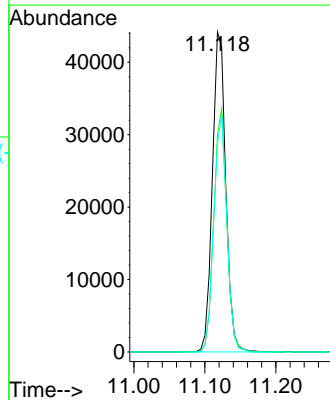
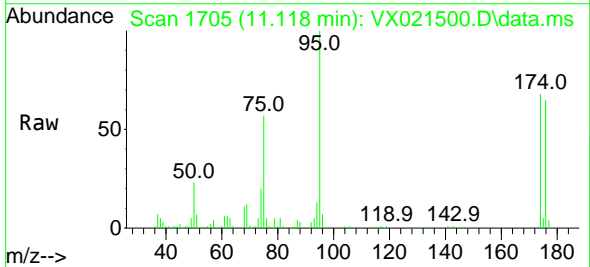


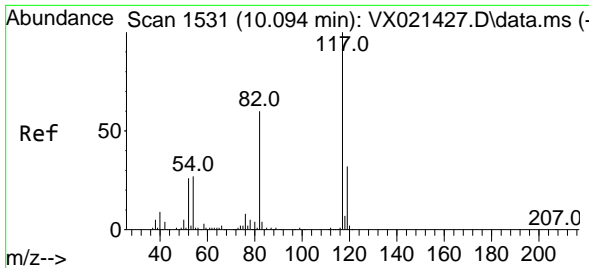
Tgt Ion: 43 Resp: 13931
 Ion Ratio Lower Upper
 43 100
 58 47.1 30.9 92.8



#62
 4-Bromofluorobenzene
 Concen: 54.24 ug/l
 RT: 11.118 min Scan# 1705
 Delta R.T. -0.000 min
 Lab File: VX021500.D
 Acq: 25 Mar 2021 20:36

Tgt Ion: 95 Resp: 57882
 Ion Ratio Lower Upper
 95 100
 174 73.6 0.0 154.6
 176 72.7 0.0 155.8



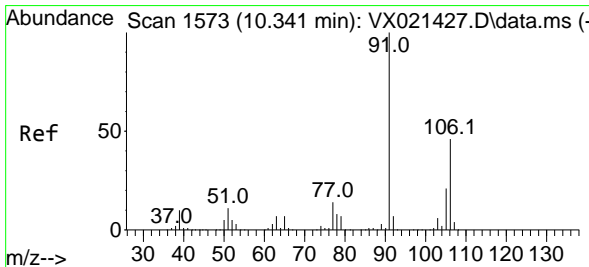
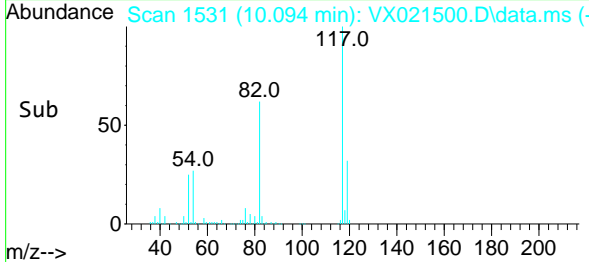
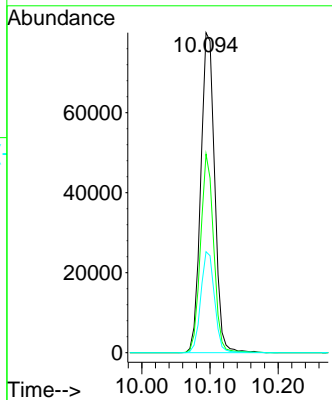
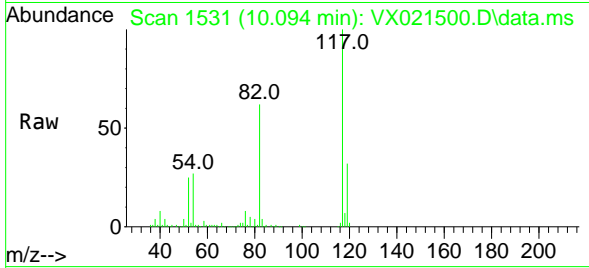


#63
 Chlorobenzene-d5
 Concen: 50.00 ug/l
 RT: 10.094 min Scan# 1531
 Delta R.T. 0.000 min
 Lab File: VX021500.D
 Acq: 25 Mar 2021 20:36

Instrument :
 MSVOA_X
 ClientSampled :

Tgt Ion:117 Resp: 113286

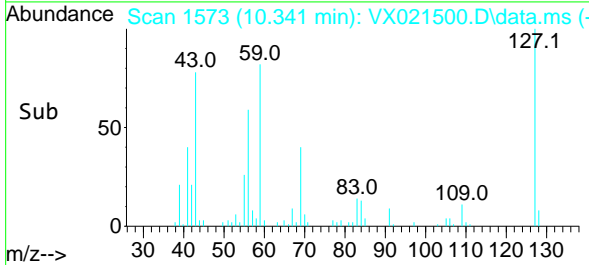
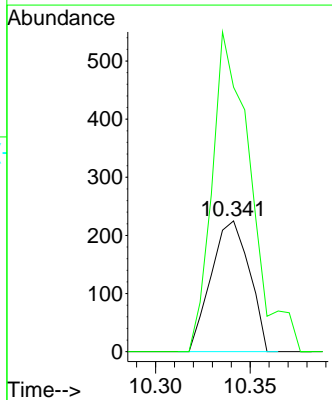
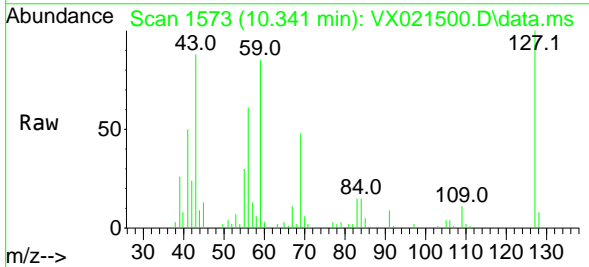
Ion	Ratio	Lower	Upper
117	100		
82	62.0	47.4	71.2
119	31.6	26.6	39.8

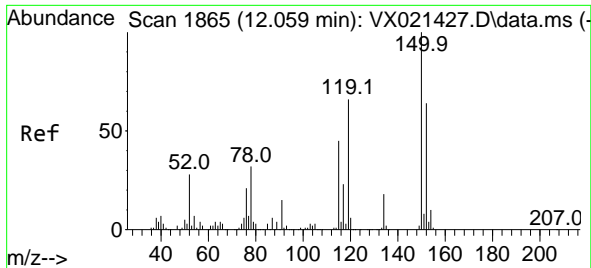


#68
 m/p-Xylenes
 Concen: 0.21 ug/l
 RT: 10.341 min Scan# 1573
 Delta R.T. 0.000 min
 Lab File: VX021500.D
 Acq: 25 Mar 2021 20:36

Tgt Ion:106 Resp: 316

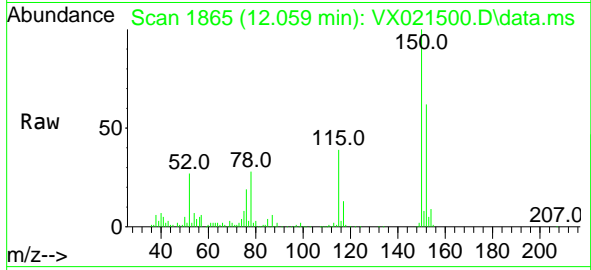
Ion	Ratio	Lower	Upper
106	100		
91	246.2	162.8	244.2#





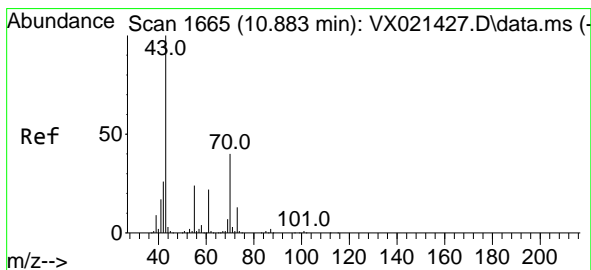
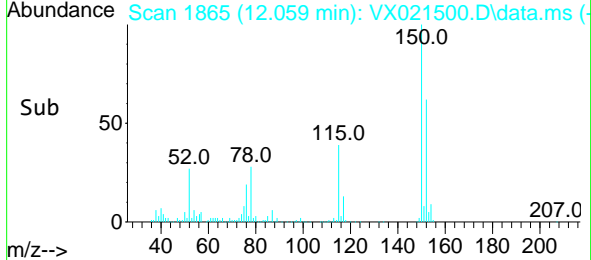
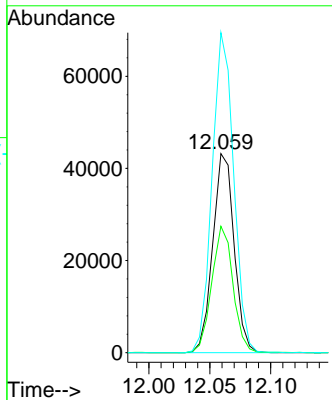
#72
 1,4-Dichlorobenzene-d4
 Concen: 50.00 ug/l
 RT: 12.059 min Scan# 1865
 Delta R.T. 0.000 min
 Lab File: VX021500.D
 Acq: 25 Mar 2021 20:36

Instrument :
 MSVOA_X
 ClientSampled :

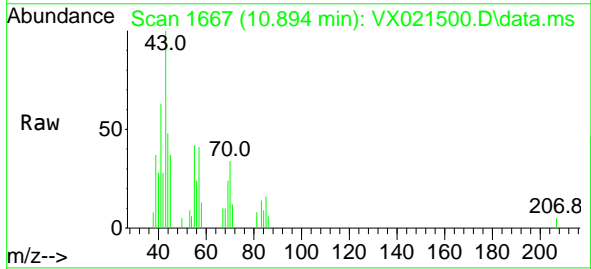


Tgt Ion:152 Resp: 52774

Ion	Ratio	Lower	Upper
152	100		
115	63.3	41.1	123.3
150	161.9	0.0	349.0

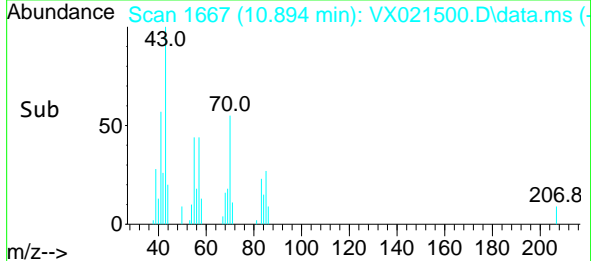
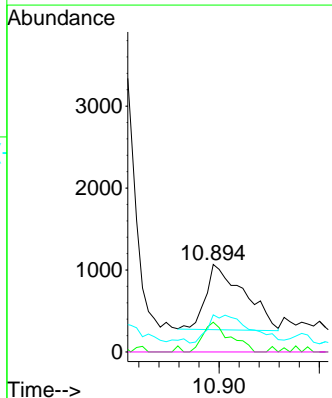


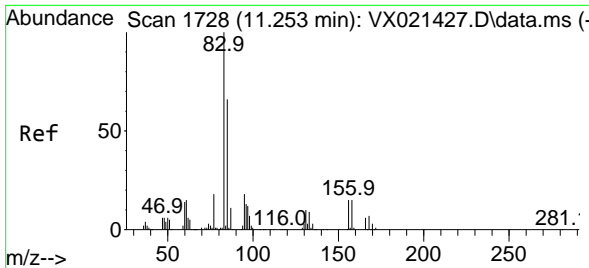
#74
 N-amy1 acetate
 Concen: 1.18 ug/l
 RT: 10.894 min Scan# 1667
 Delta R.T. 0.011 min
 Lab File: VX021500.D
 Acq: 25 Mar 2021 20:36



Tgt Ion: 43 Resp: 2124

Ion	Ratio	Lower	Upper
43	100		
70	31.9	39.0	58.6#
55	48.0	21.5	32.3#
61	0.0	22.1	33.1#

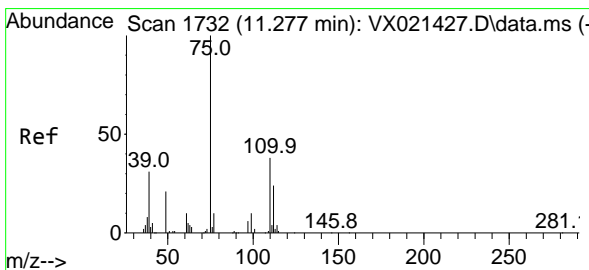
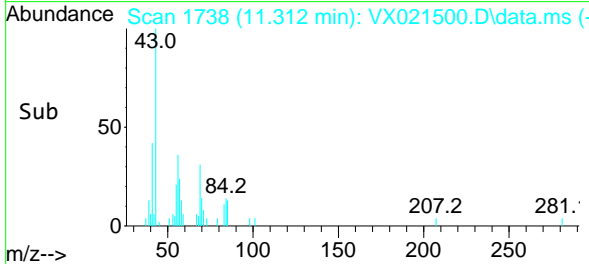
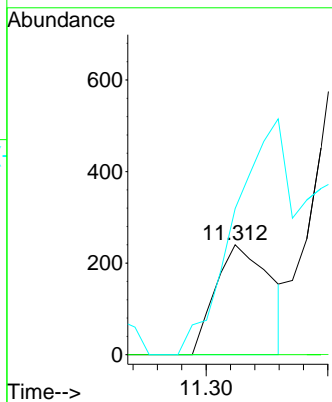
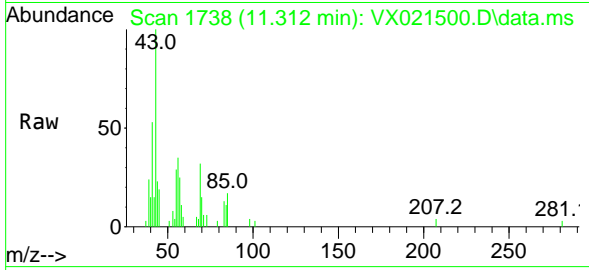




#75
 1,1,2-Tetrachloroethane
 Concen: 0.29 ug/l
 RT: 11.312 min Scan# 1738
 Delta R.T. 0.059 min
 Lab File: VX021500.D
 Acq: 25 Mar 2021 20:36

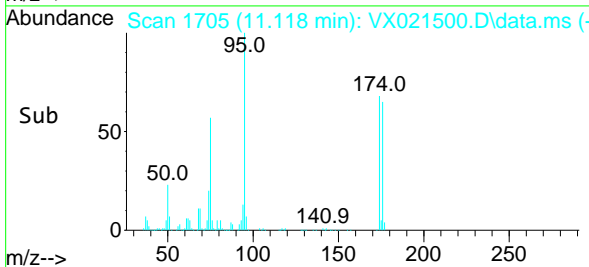
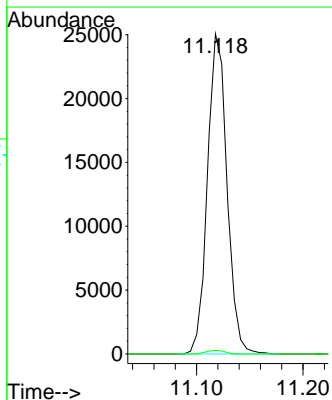
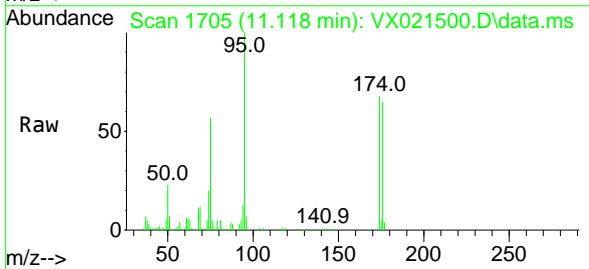
Instrument :
 MSVOA_X
 ClientSampled :

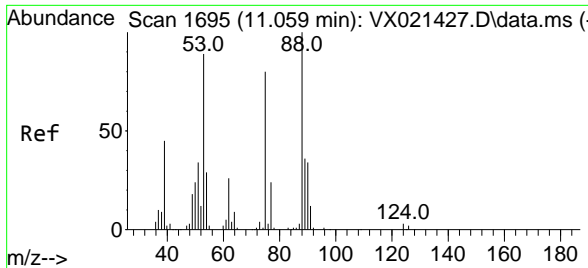
Tgt Ion	Resp	Lower	Upper
83	374		
83	100		
131	0.0	5.1	15.2#
85	250.5	31.8	95.4#



#76
 1,2,3-Trichloropropane
 Concen: 26.03 ug/l
 RT: 11.118 min Scan# 1705
 Delta R.T. -0.159 min
 Lab File: VX021500.D
 Acq: 25 Mar 2021 20:36

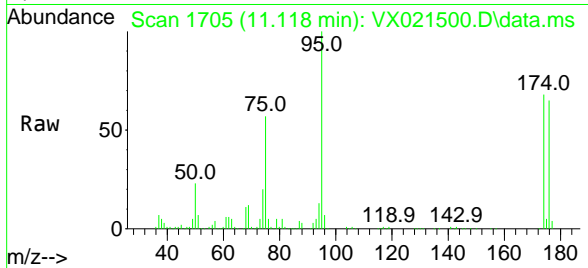
Tgt Ion	Resp	Lower	Upper
75	31975		
75	100		
77	1.0	19.1	57.5#





#81
 trans-1,4-Dichloro-2-butene
 Concen: 79.27 ug/l
 RT: 11.118 min Scan# 1705
 Delta R.T. 0.059 min
 Lab File: VX021500.D
 Acq: 25 Mar 2021 20:36

Instrument :
 MSVOA_X
 ClientSampled :



Tgt Ion: 75 Resp: 31975
 Ion Ratio Lower Upper
 75 100
 53 0.3 74.5 111.7#
 89 0.0 37.9 56.9#

