

Data Path : Z:\voasrv\HPCHEM1\MSVOA_X\Data\VX032521\
 Data File : VX021495.D
 Acq On : 25 Mar 2021 18:39
 Operator : JC/MD
 Sample : M1787-10DL 4X
 Misc : 5.0mL/MSVOA_X/WATER
 ALS Vial : 23 Sample Multiplier: 1

Instrument :
 MSVOA_X
 ClientSampleId :
 RE-125D3-20210319DL

Quant Time: Mar 26 03:17:31 2021
 Quant Method : Z:\voasrv\HPCHEM1\MSVOA_X\Method\82X032421W.M
 Quant Title : SW846 8260
 QLast Update : Wed Mar 24 12:25:26 2021
 Response via : Initial Calibration

Compound	R.T.	QIon	Response	Conc	Units	Dev(Min)

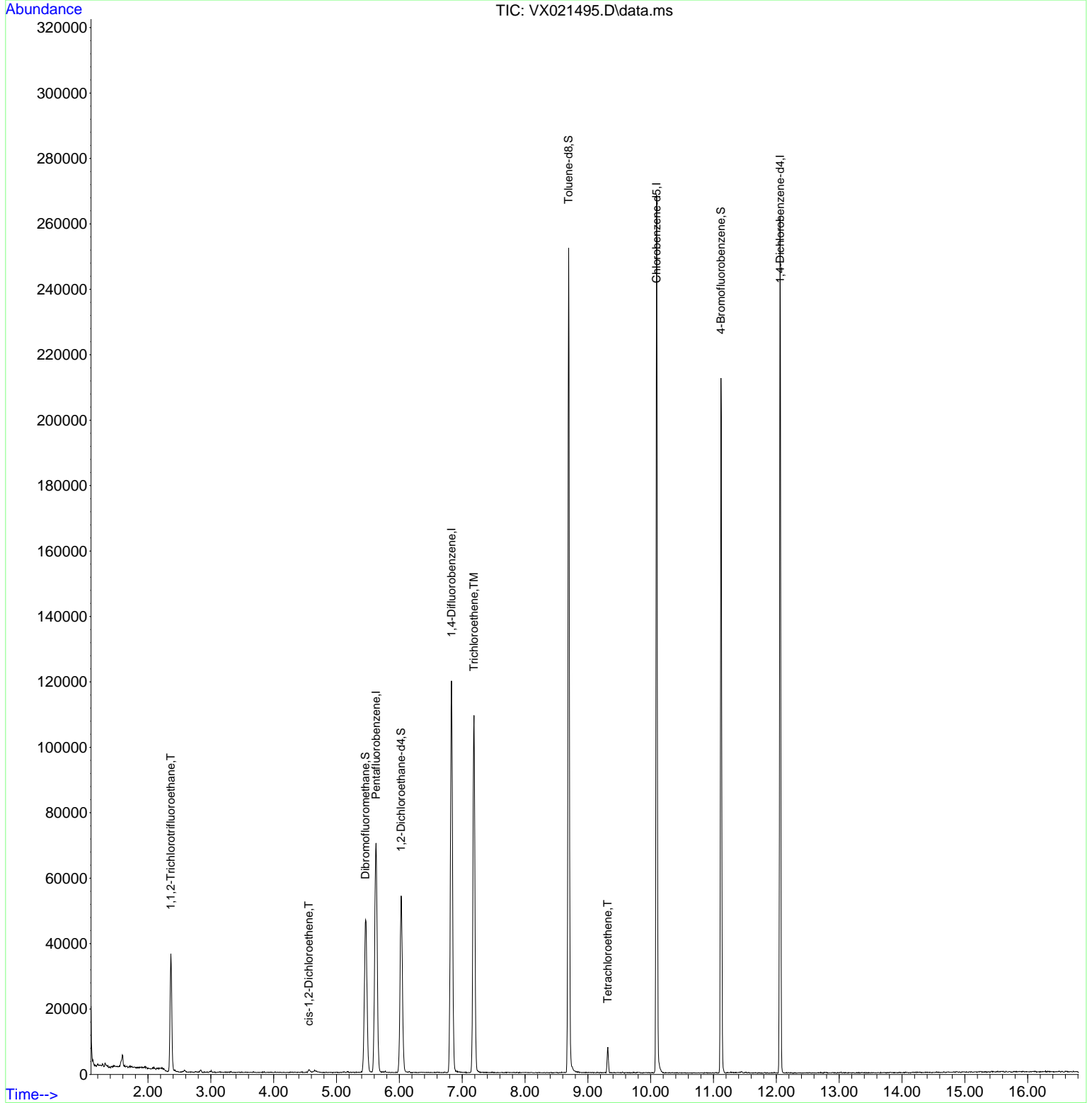
Internal Standards						
1) Pentafluorobenzene	5.629	168	59257	50.00	ug/l	# 0.00
34) 1,4-Difluorobenzene	6.829	114	110752	50.00	ug/l	0.00
63) Chlorobenzene-d5	10.094	117	110758	50.00	ug/l	0.00
72) 1,4-Dichlorobenzene-d4	12.059	152	48569	50.00	ug/l	0.00
System Monitoring Compounds						
33) 1,2-Dichloroethane-d4	6.029	65	52580	53.33	ug/l	0.00
Spiked Amount	50.000	Range	78 - 117	Recovery	=	106.66%
35) Dibromofluoromethane	5.458	113	38789	49.31	ug/l	0.00
Spiked Amount	50.000	Range	75 - 124	Recovery	=	98.62%
50) Toluene-d8	8.694	98	141483	50.47	ug/l	0.00
Spiked Amount	50.000	Range	92 - 112	Recovery	=	100.94%
62) 4-Bromofluorobenzene	11.118	95	55727	51.13	ug/l	0.00
Spiked Amount	50.000	Range	83 - 123	Recovery	=	102.26%
Target Compounds						
						Qvalue
9) 1,1,2-Trichlorotrifluo...	2.364	101	13300	21.81	ug/l	95
27) cis-1,2-Dichloroethene	4.558	96	469	0.62	ug/l	83
44) Trichloroethene	7.188	130	37965	46.69	ug/l	100
64) Tetrachloroethene	9.318	164	1231	1.66	ug/l	92

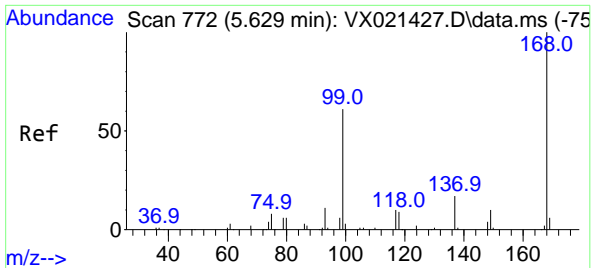
(#) = qualifier out of range (m) = manual integration (+) = signals summed

Data Path : Z:\voasrv\HPCHEM1\MSVOA_X\Data\VX032521\
 Data File : VX021495.D
 Acq On : 25 Mar 2021 18:39
 Operator : JC/MD
 Sample : M1787-10DL 4X
 Misc : 5.0mL/MSVOA_X/WATER
 ALS Vial : 23 Sample Multiplier: 1

Instrument :
 MSVOA_X
ClientSampleID :
 RE-125D3-20210319DL

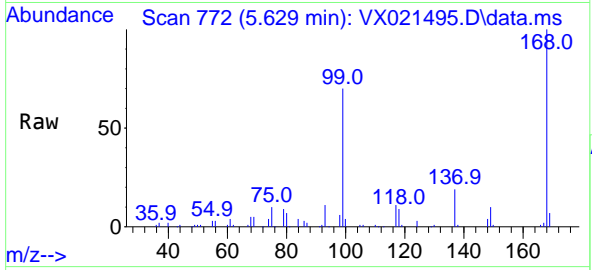
Quant Time: Mar 26 03:17:31 2021
 Quant Method : Z:\voasrv\HPCHEM1\MSVOA_X\Method\82X032421W.M
 Quant Title : SW846 8260
 QLast Update : Wed Mar 24 12:25:26 2021
 Response via : Initial Calibration



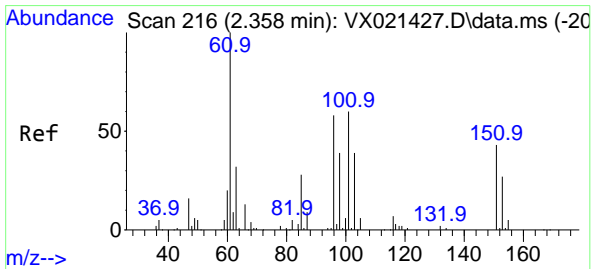
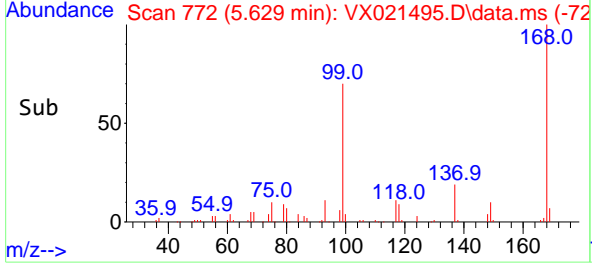
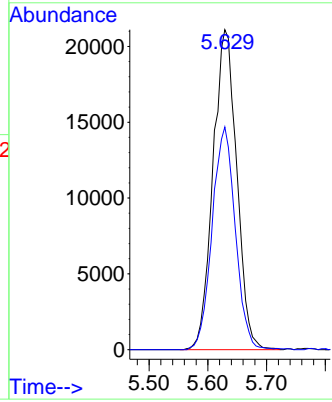


#1
 Pentafluorobenzene
 Concen: 50.00 ug/l
 RT: 5.629 min Scan# 772
 Delta R.T. -0.000 min
 Lab File: VX021495.D
 Acq: 25 Mar 2021 18:39

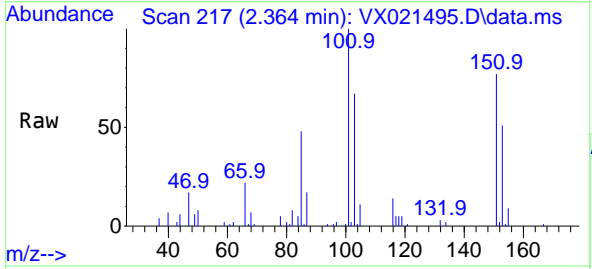
Instrument : MSVOA_X
 ClientSampleId : RE-125D3-20210319DL



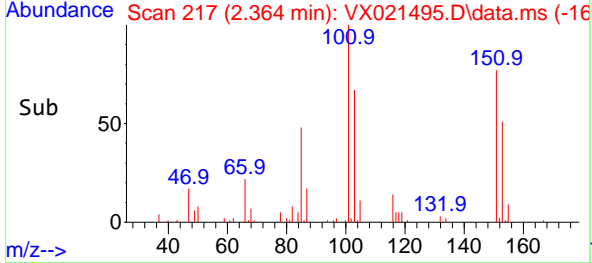
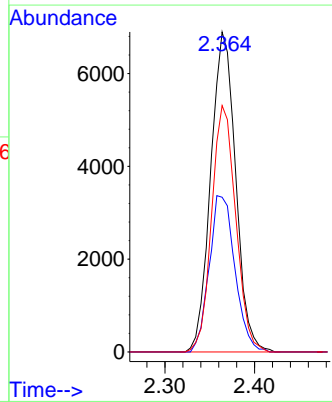
Tgt Ion:168 Resp: 59257
 Ion Ratio Lower Upper
 168 100
 99 69.6 45.8 68.6#

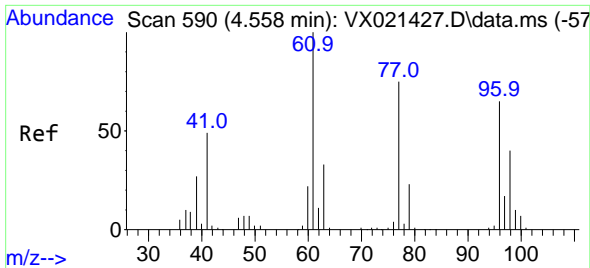


#9
 1,1,2-Trichlorotrifluoroethane
 Concen: 21.81 ug/l
 RT: 2.364 min Scan# 217
 Delta R.T. 0.006 min
 Lab File: VX021495.D
 Acq: 25 Mar 2021 18:39



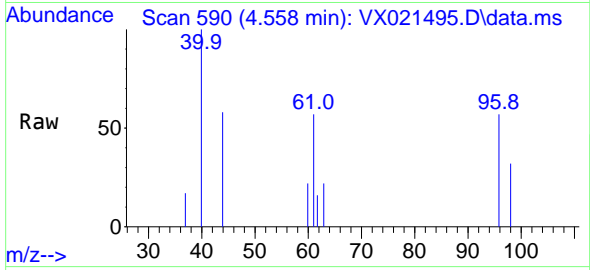
Tgt Ion:101 Resp: 13300
 Ion Ratio Lower Upper
 101 100
 85 50.5 34.9 52.3
 151 74.6 61.4 92.2



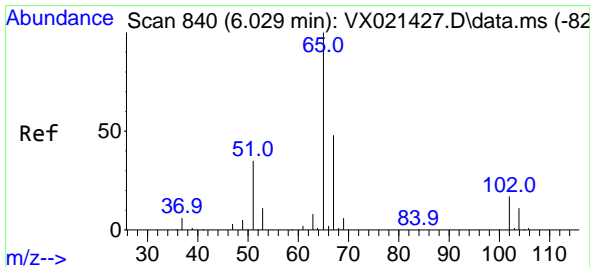
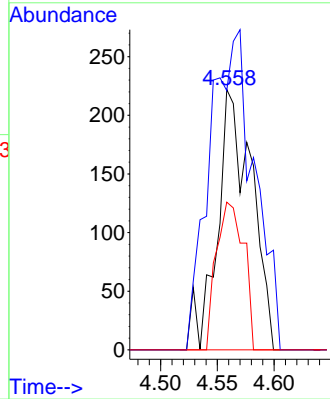
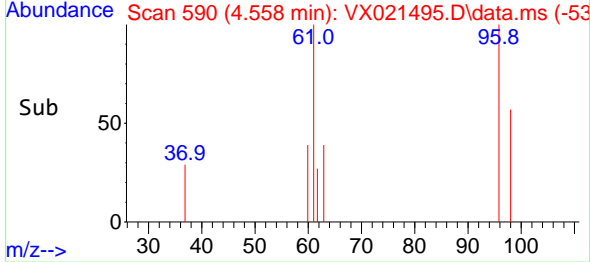


#27
 cis-1,2-Dichloroethene
 Concen: 0.62 ug/l
 RT: 4.558 min Scan# 590
 Delta R.T. 0.000 min
 Lab File: VX021495.D
 Acq: 25 Mar 2021 18:39

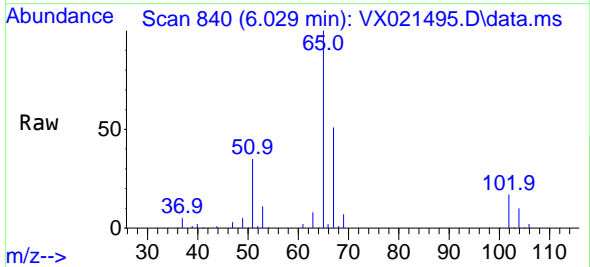
Instrument :
 MSVOA_X
 ClientSampleID :
 RE-125D3-20210319DL



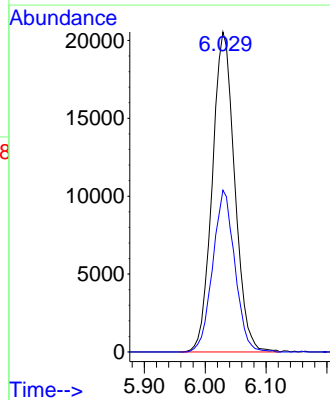
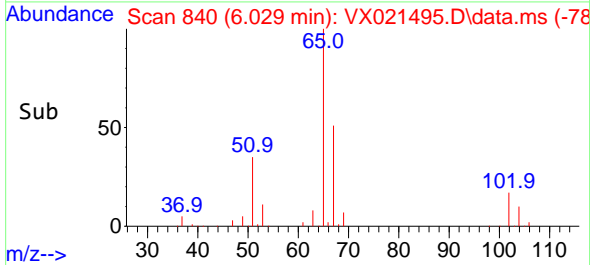
Tgt Ion: 96 Resp: 469
 Ion Ratio Lower Upper
 96 100
 61 159.1 0.0 285.6
 98 45.0 0.0 129.6

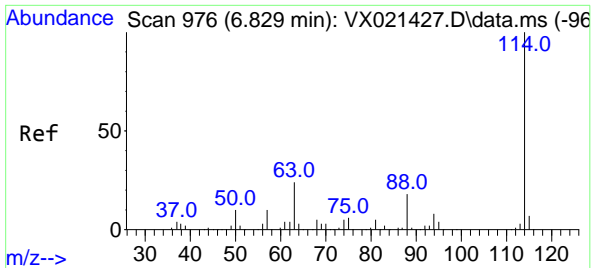


#33
 1,2-Dichloroethane-d4
 Concen: 53.33 ug/l
 RT: 6.029 min Scan# 840
 Delta R.T. -0.000 min
 Lab File: VX021495.D
 Acq: 25 Mar 2021 18:39



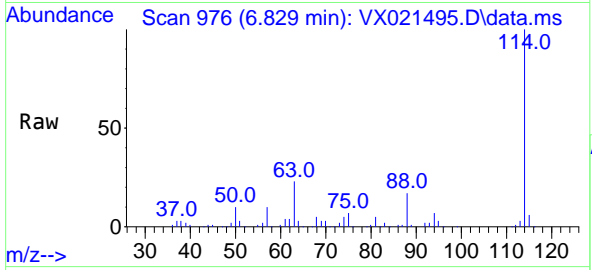
Tgt Ion: 65 Resp: 52580
 Ion Ratio Lower Upper
 65 100
 67 49.8 0.0 105.4





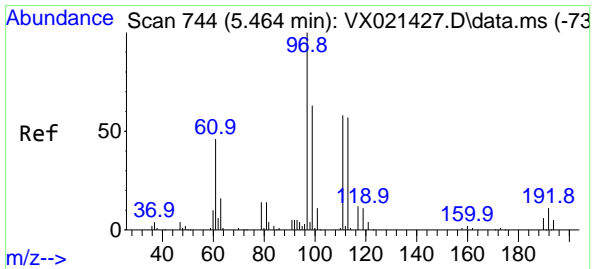
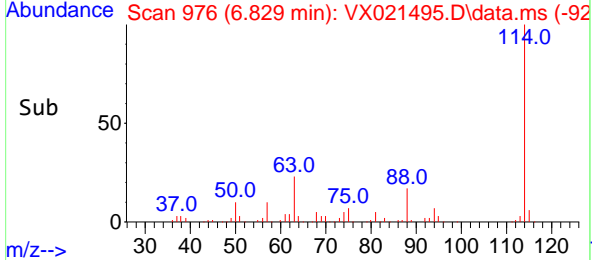
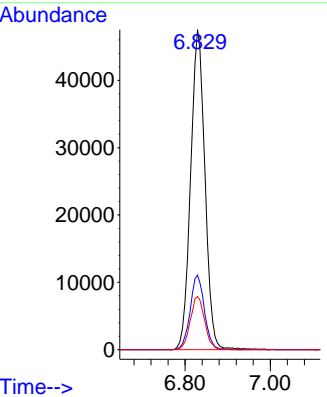
#34
 1,4-Difluorobenzene
 Concen: 50.00 ug/l
 RT: 6.829 min Scan# 976
 Delta R.T. 0.000 min
 Lab File: VX021495.D
 Acq: 25 Mar 2021 18:39

Instrument :
 MSVOA_X
ClientSampled :
 RE-125D3-20210319DL

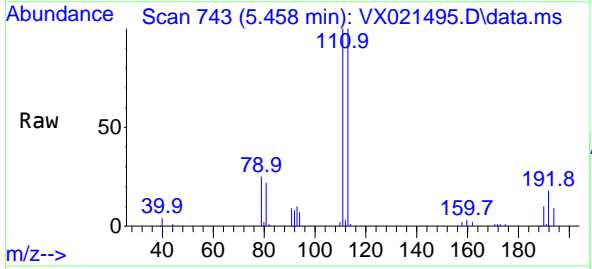


Tgt Ion:114 Resp: 110752

Ion	Ratio	Lower	Upper
114	100		
63	23.3	0.0	40.8
88	16.6	0.0	32.8

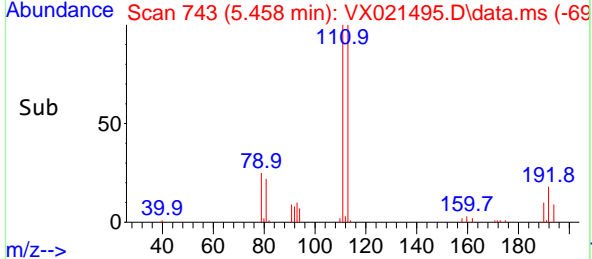
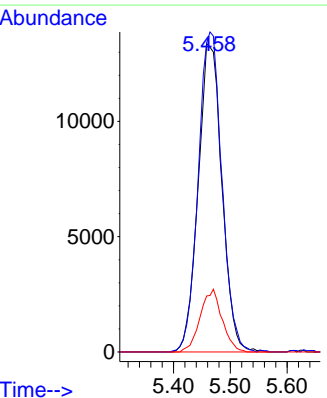


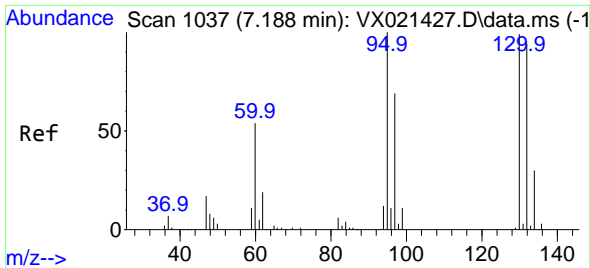
#35
 Dibromofluoromethane
 Concen: 49.31 ug/l
 RT: 5.458 min Scan# 743
 Delta R.T. -0.006 min
 Lab File: VX021495.D
 Acq: 25 Mar 2021 18:39



Tgt Ion:113 Resp: 38789

Ion	Ratio	Lower	Upper
113	100		
111	103.6	81.9	122.9
192	18.7	16.7	25.1

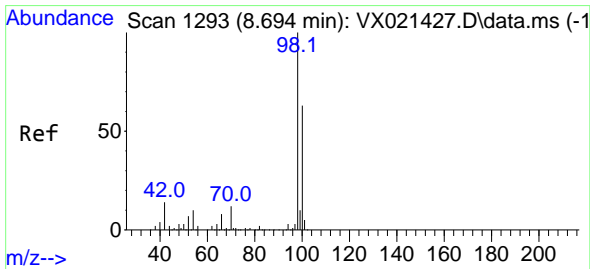
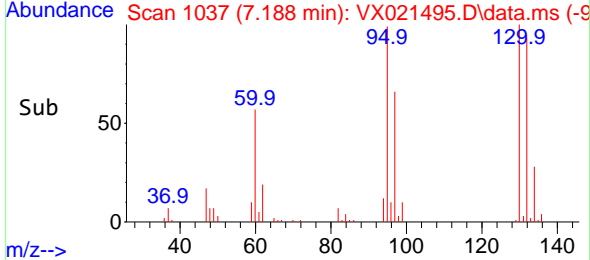
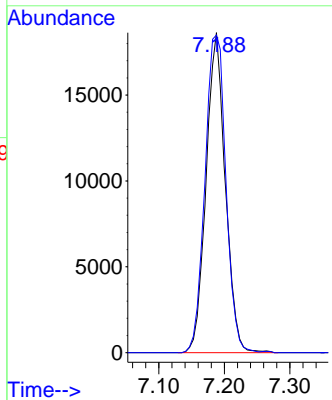
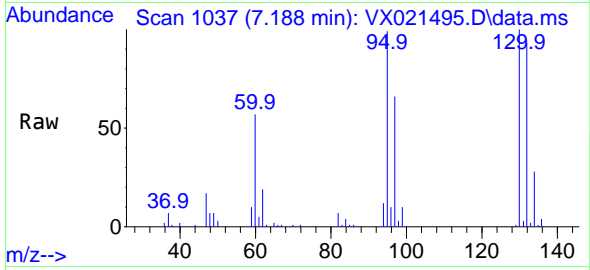




#44
 Trichloroethene
 Concen: 46.69 ug/l
 RT: 7.188 min Scan# 1037
 Delta R.T. -0.000 min
 Lab File: VX021495.D
 Acq: 25 Mar 2021 18:39

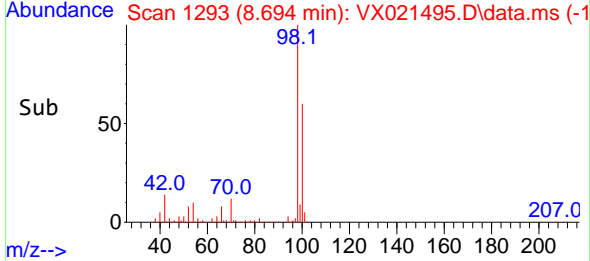
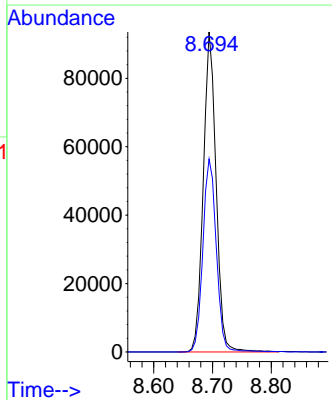
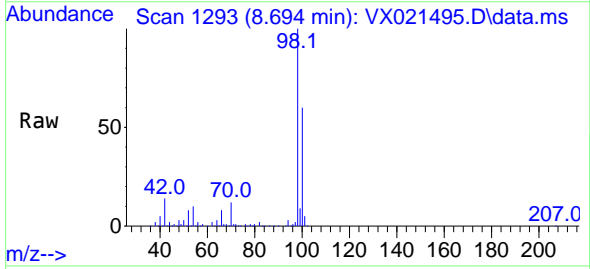
Instrument :
 MSVOA_X
ClientSampled :
 RE-125D3-20210319DL

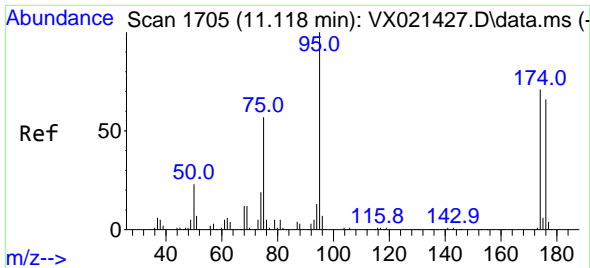
Tgt Ion:130 Resp: 37965
 Ion Ratio Lower Upper
 130 100
 95 99.3 0.0 198.0



#50
 Toluene-d8
 Concen: 50.47 ug/l
 RT: 8.694 min Scan# 1293
 Delta R.T. 0.000 min
 Lab File: VX021495.D
 Acq: 25 Mar 2021 18:39

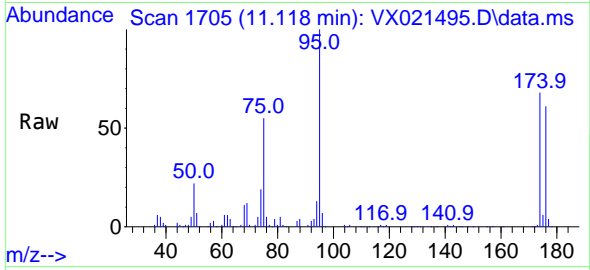
Tgt Ion: 98 Resp: 141483
 Ion Ratio Lower Upper
 98 100
 100 63.4 51.9 77.9



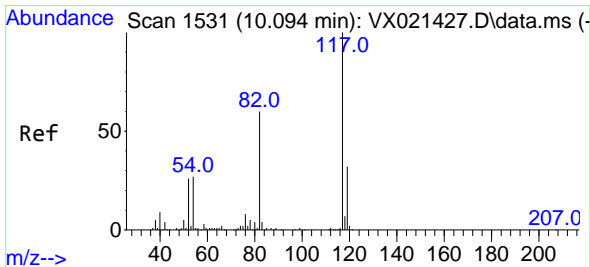
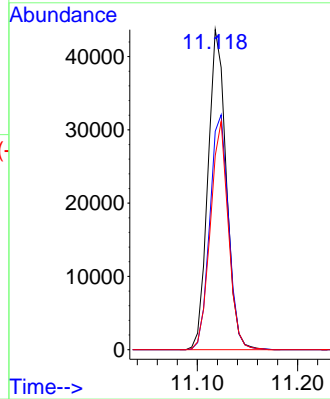
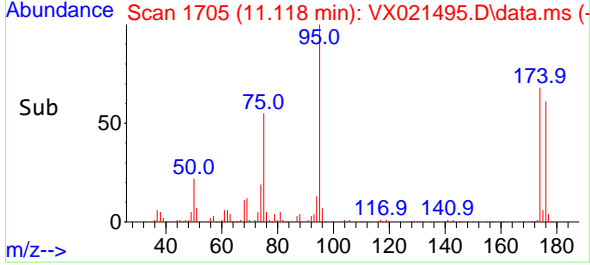


#62
 4-Bromofluorobenzene
 Concen: 51.13 ug/l
 RT: 11.118 min Scan# 1705
 Delta R.T. -0.000 min
 Lab File: VX021495.D
 Acq: 25 Mar 2021 18:39

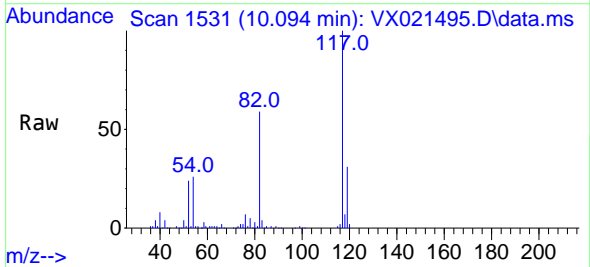
Instrument :
 MSVOA_X
 ClientSampleID :
 RE-125D3-20210319DL



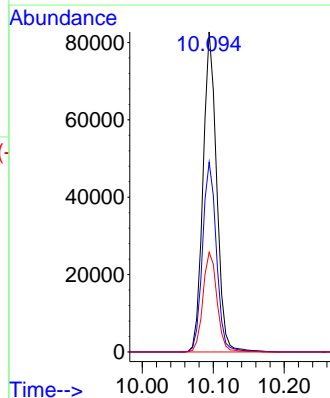
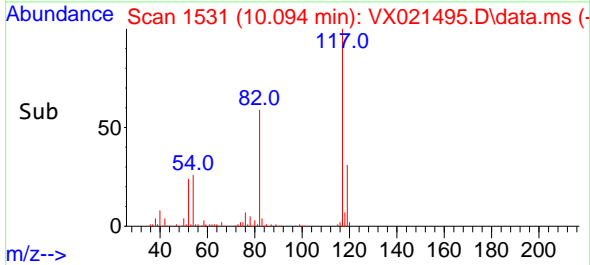
Tgt Ion: 95 Resp: 55727
 Ion Ratio Lower Upper
 95 100
 174 75.2 0.0 154.6
 176 69.8 0.0 155.8

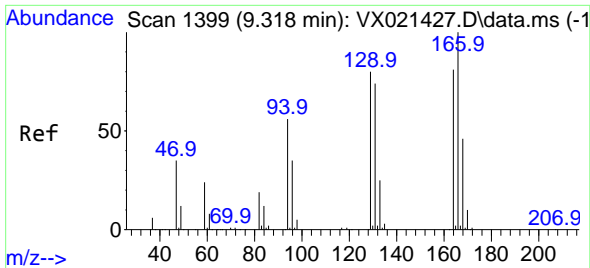


#63
 Chlorobenzene-d5
 Concen: 50.00 ug/l
 RT: 10.094 min Scan# 1531
 Delta R.T. 0.000 min
 Lab File: VX021495.D
 Acq: 25 Mar 2021 18:39



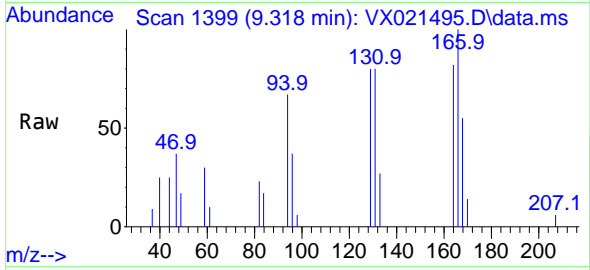
Tgt Ion: 117 Resp: 110758
 Ion Ratio Lower Upper
 117 100
 82 59.3 47.4 71.2
 119 31.2 26.6 39.8



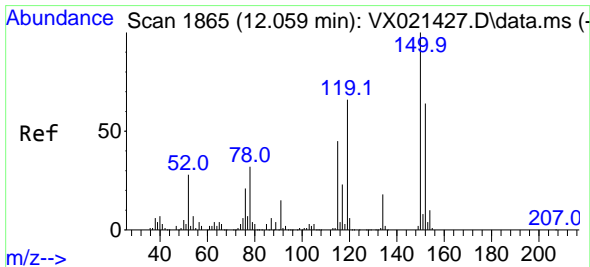
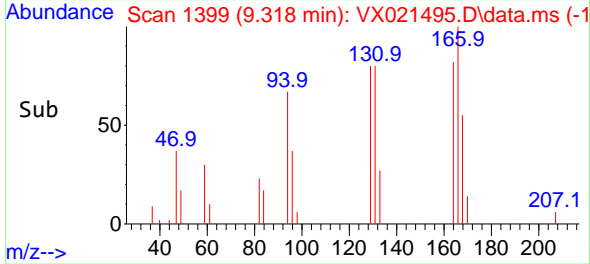
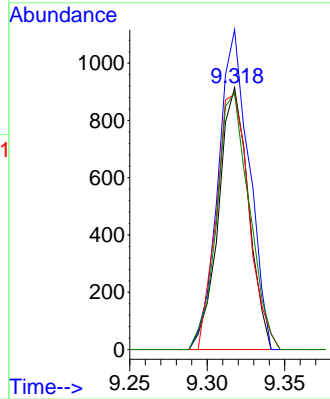


#64
 Tetrachloroethene
 Concen: 1.66 ug/l
 RT: 9.318 min Scan# 1399
 Delta R.T. -0.000 min
 Lab File: VX021495.D
 Acq: 25 Mar 2021 18:39

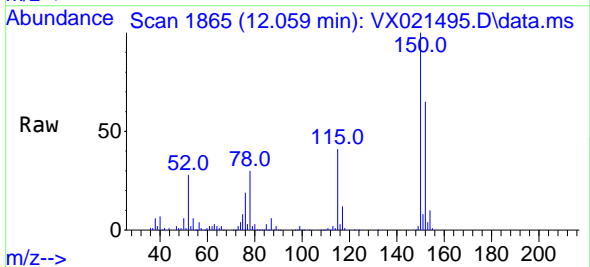
Instrument :
 MSVOA_X
 ClientSampleId :
 RE-125D3-20210319DL



Tgt Ion:164 Resp: 1231
 Ion Ratio Lower Upper
 164 100
 166 122.2 103.4 155.2
 129 97.6 70.8 106.2
 131 98.1 72.5 108.7



#72
 1,4-Dichlorobenzene-d4
 Concen: 50.00 ug/l
 RT: 12.059 min Scan# 1865
 Delta R.T. 0.000 min
 Lab File: VX021495.D
 Acq: 25 Mar 2021 18:39



Tgt Ion:152 Resp: 48569
 Ion Ratio Lower Upper
 152 100
 115 61.8 41.1 123.3
 150 158.1 0.0 349.0

