

Data Path : Z:\voasrv\HPCHEM1\MSVOA_X\Data\VX032521\
 Data File : VX021521.D
 Acq On : 26 Mar 2021 05:36
 Operator : JC/MD
 Sample : M1829-01
 Misc : 5.0mL/MSVOA_X/WATER
 ALS Vial : 51 Sample Multiplier: 1

Instrument :
 MSVOA_X
 ClientSampled :
 MW-7B

Quant Time: Mar 26 06:37:07 2021
 Quant Method : Z:\voasrv\HPCHEM1\MSVOA_X\Method\82X032421W.M
 Quant Title : SW846 8260
 QLast Update : Wed Mar 24 12:25:26 2021
 Response via : Initial Calibration

Compound	R.T.	QIon	Response	Conc	Units	Dev(Min)

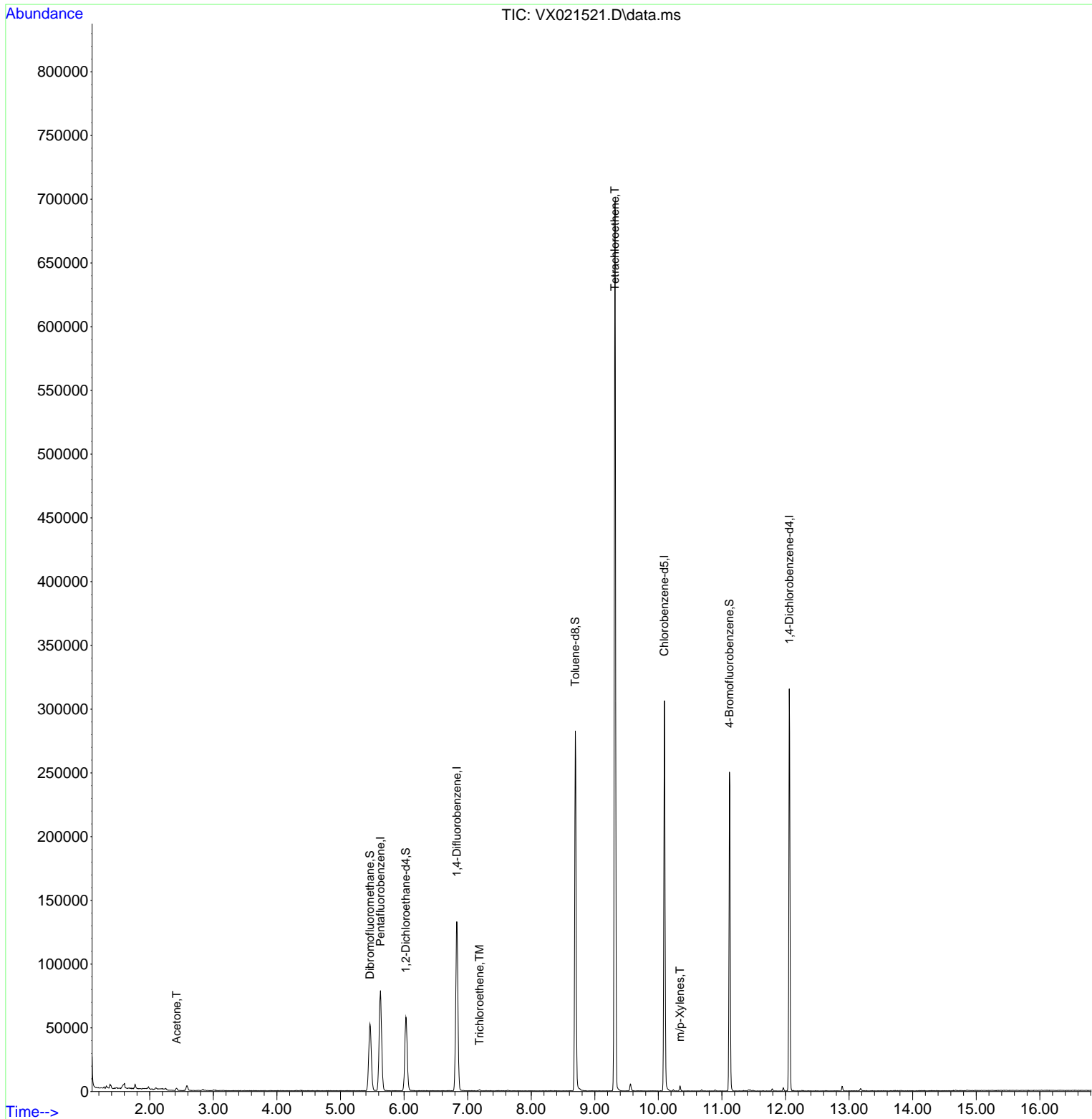
Internal Standards						
1) Pentafluorobenzene	5.629	168	65814	50.00	ug/l	0.00
34) 1,4-Difluorobenzene	6.829	114	124482	50.00	ug/l	0.00
63) Chlorobenzene-d5	10.094	117	125337	50.00	ug/l	0.00
72) 1,4-Dichlorobenzene-d4	12.059	152	58748	50.00	ug/l	0.00
System Monitoring Compounds						
33) 1,2-Dichloroethane-d4	6.029	65	57319	52.34	ug/l	0.00
Spiked Amount	50.000	Range 78 - 117	Recovery	=	104.68%	
35) Dibromofluoromethane	5.464	113	43509	49.21	ug/l	0.00
Spiked Amount	50.000	Range 75 - 124	Recovery	=	98.42%	
50) Toluene-d8	8.694	98	157286	49.92	ug/l	0.00
Spiked Amount	50.000	Range 92 - 112	Recovery	=	99.84%	
62) 4-Bromofluorobenzene	11.118	95	65275	53.28	ug/l	0.00
Spiked Amount	50.000	Range 83 - 123	Recovery	=	106.56%	
Target Compounds						
						Qvalue
16) Acetone	2.423	43	1930	4.66	ug/l #	87
44) Trichloroethene	7.188	130	298	0.33	ug/l	84
64) Tetrachloroethene	9.318	164	121280	144.45	ug/l	97
68) m/p-Xylenes	10.341	106	849	0.52	ug/l	89

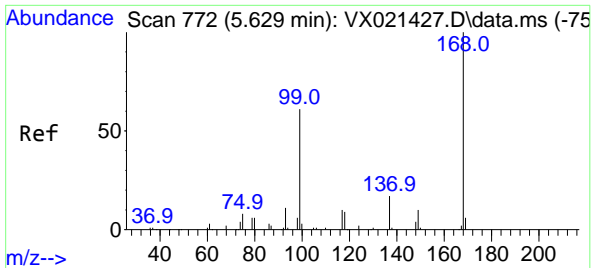
(#) = qualifier out of range (m) = manual integration (+) = signals summed

Data Path : Z:\voasrv\HPCHEM1\MSVOA_X\Data\VX032521\
 Data File : VX021521.D
 Acq On : 26 Mar 2021 05:36
 Operator : JC/MD
 Sample : M1829-01
 Misc : 5.0mL/MSVOA_X/WATER
 ALS Vial : 51 Sample Multiplier: 1

Instrument :
 MSVOA_X
 ClientSampleId :
 MW-7B

Quant Time: Mar 26 06:37:07 2021
 Quant Method : Z:\voasrv\HPCHEM1\MSVOA_X\Method\82X032421W.M
 Quant Title : SW846 8260
 QLast Update : Wed Mar 24 12:25:26 2021
 Response via : Initial Calibration

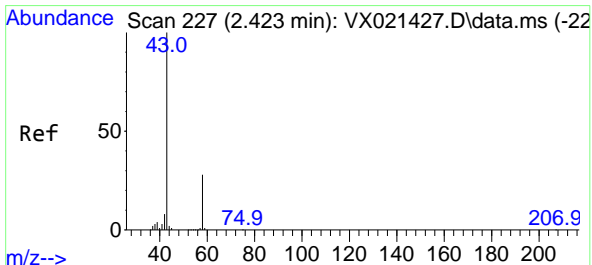
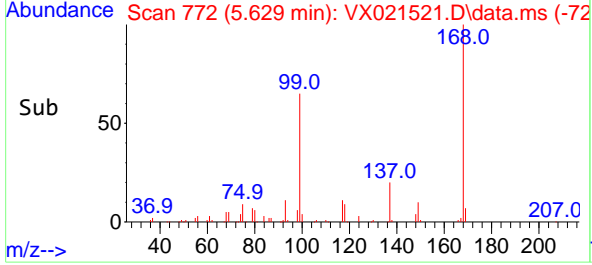
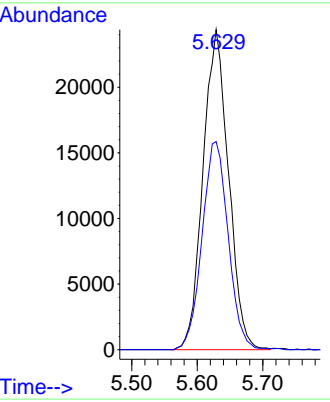
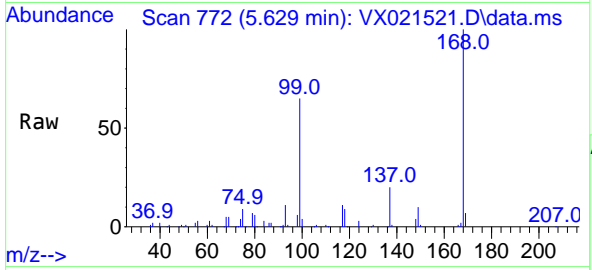




#1
 Pentafluorobenzene
 Concen: 50.00 ug/l
 RT: 5.629 min Scan# 772
 Delta R.T. -0.000 min
 Lab File: VX021521.D
 Acq: 26 Mar 2021 05:36

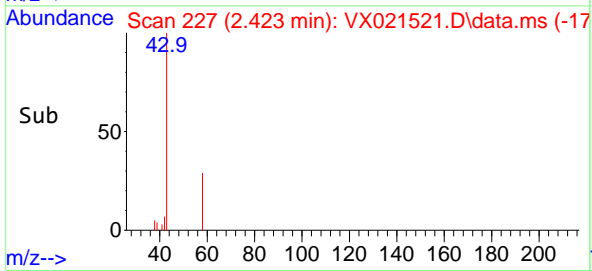
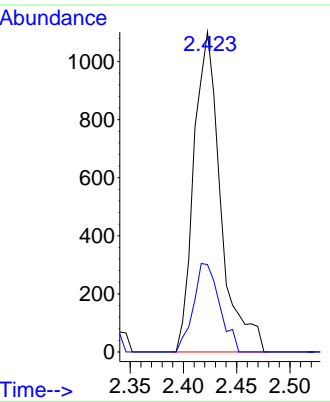
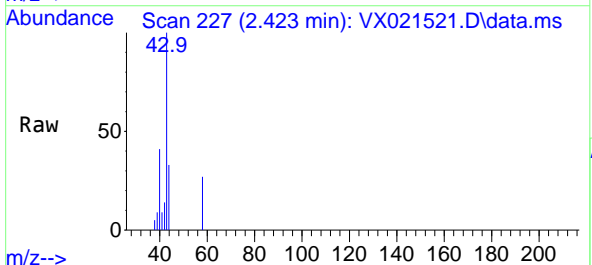
Instrument :
 MSVOA_X
 ClientSampled :
 MW-7B

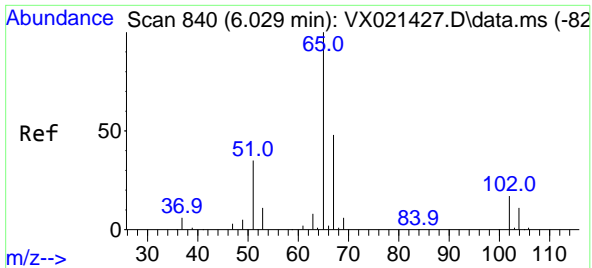
Tgt Ion:168 Resp: 65814
 Ion Ratio Lower Upper
 168 100
 99 65.1 45.8 68.6



#16
 Acetone
 Concen: 4.66 ug/l
 RT: 2.423 min Scan# 227
 Delta R.T. -0.000 min
 Lab File: VX021521.D
 Acq: 26 Mar 2021 05:36

Tgt Ion: 43 Resp: 1930
 Ion Ratio Lower Upper
 43 100
 58 27.3 27.8 41.8#

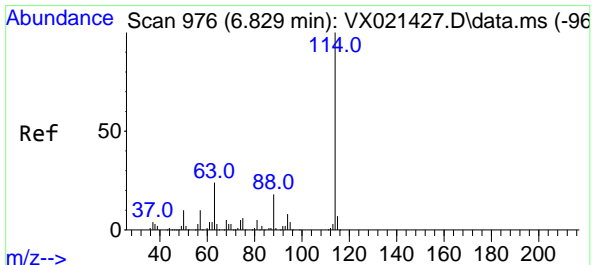
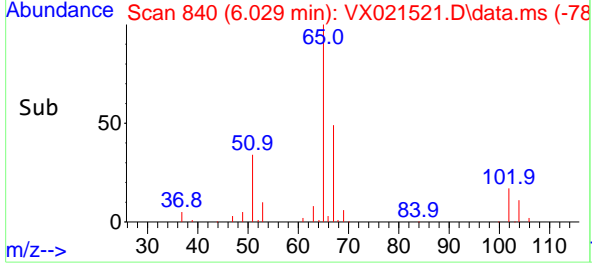
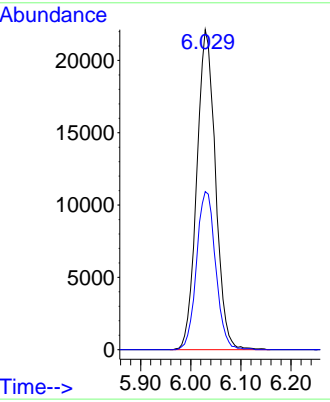
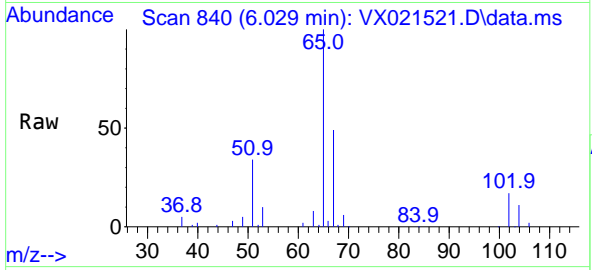




#33
 1,2-Dichloroethane-d4
 Concen: 52.34 ug/l
 RT: 6.029 min Scan# 840
 Delta R.T. -0.000 min
 Lab File: VX021521.D
 Acq: 26 Mar 2021 05:36

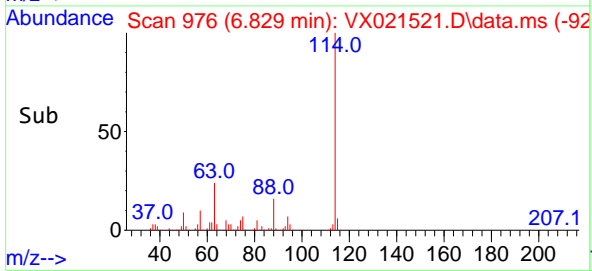
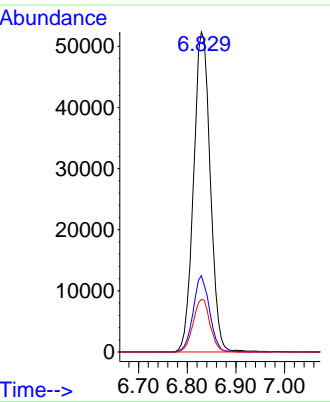
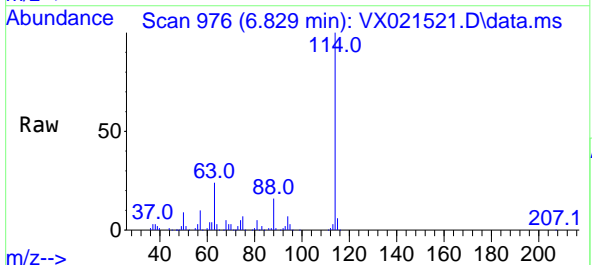
Instrument : MSVOA_X
 ClientSampled : MW-7B

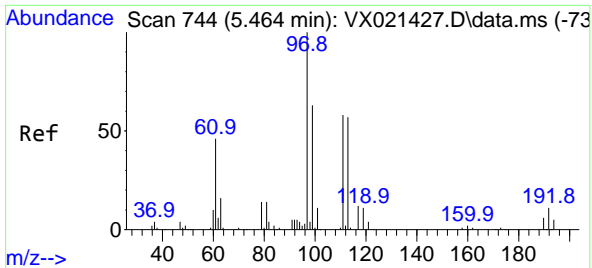
Tgt Ion: 65 Resp: 57319
 Ion Ratio Lower Upper
 65 100
 67 50.4 0.0 105.4



#34
 1,4-Difluorobenzene
 Concen: 50.00 ug/l
 RT: 6.829 min Scan# 976
 Delta R.T. 0.000 min
 Lab File: VX021521.D
 Acq: 26 Mar 2021 05:36

Tgt Ion:114 Resp: 124482
 Ion Ratio Lower Upper
 114 100
 63 23.8 0.0 40.8
 88 16.5 0.0 32.8

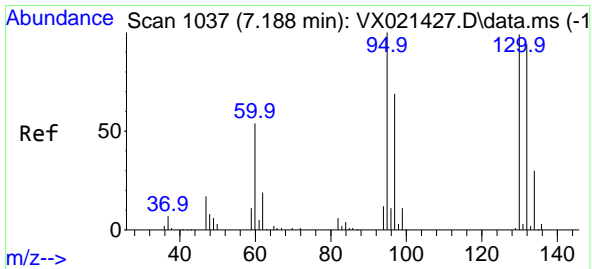
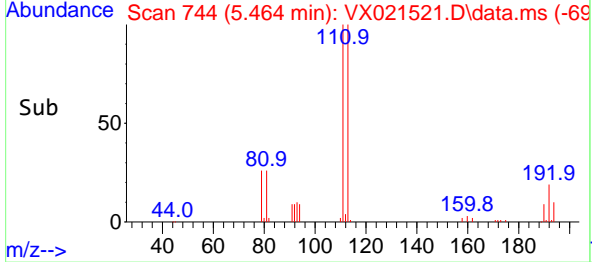
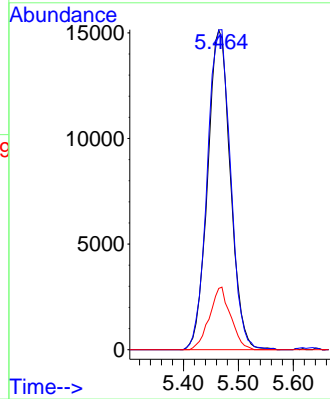
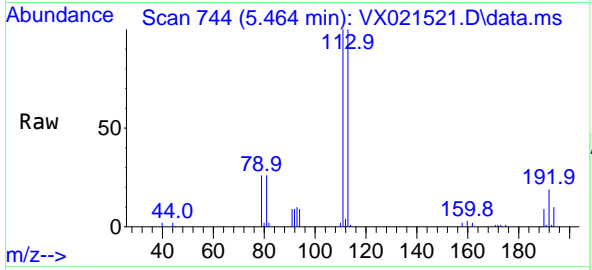




#35
 Dibromofluoromethane
 Concen: 49.21 ug/l
 RT: 5.464 min Scan# 744
 Delta R.T. 0.000 min
 Lab File: VX021521.D
 Acq: 26 Mar 2021 05:36

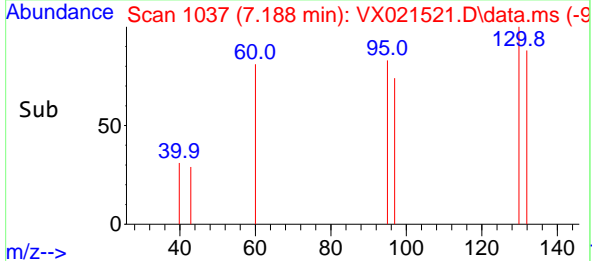
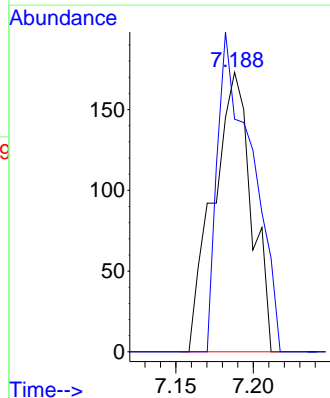
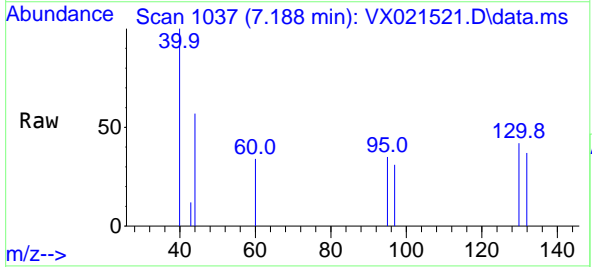
Instrument :
 MSVOA_X
 ClientSampled :
 MW-7B

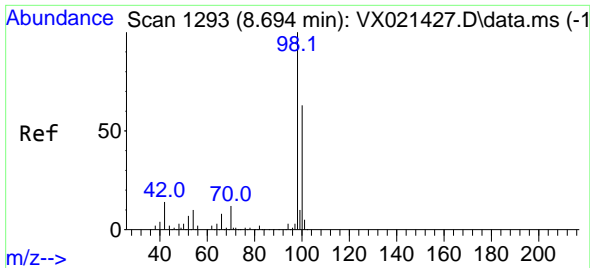
Tgt Ion:113 Resp: 43509
 Ion Ratio Lower Upper
 113 100
 111 102.5 81.9 122.9
 192 18.2 16.7 25.1



#44
 Trichloroethene
 Concen: 0.33 ug/l
 RT: 7.188 min Scan# 1037
 Delta R.T. -0.000 min
 Lab File: VX021521.D
 Acq: 26 Mar 2021 05:36

Tgt Ion:130 Resp: 298
 Ion Ratio Lower Upper
 130 100
 95 83.2 0.0 198.0

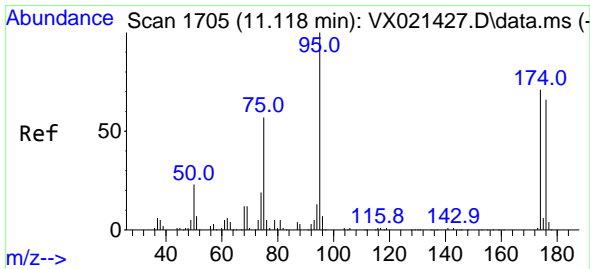
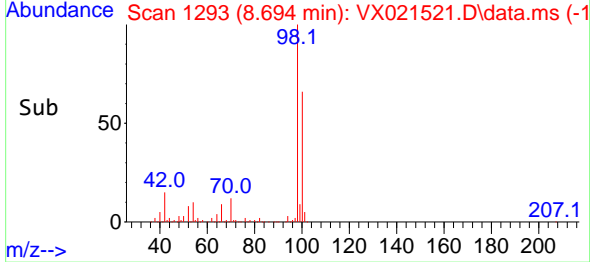
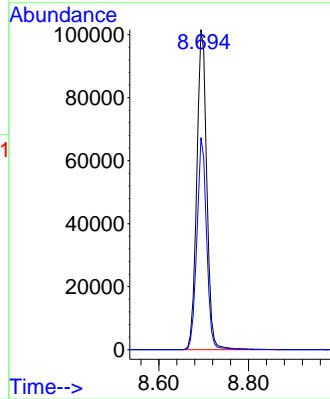
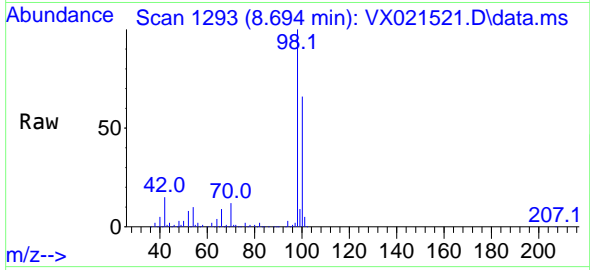




#50
 Toluene-d8
 Concen: 49.92 ug/l
 RT: 8.694 min Scan# 1293
 Delta R.T. -0.000 min
 Lab File: VX021521.D
 Acq: 26 Mar 2021 05:36

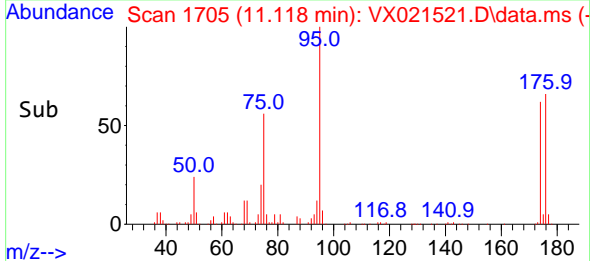
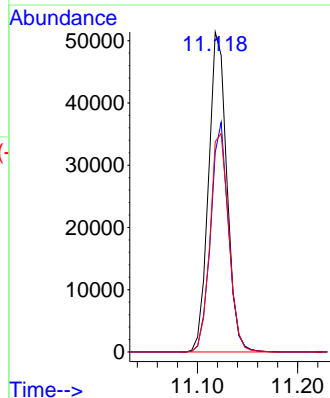
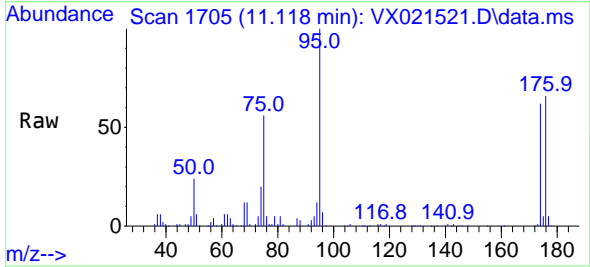
Instrument :
 MSVOA_X
 ClientSampled :
 MW-7B

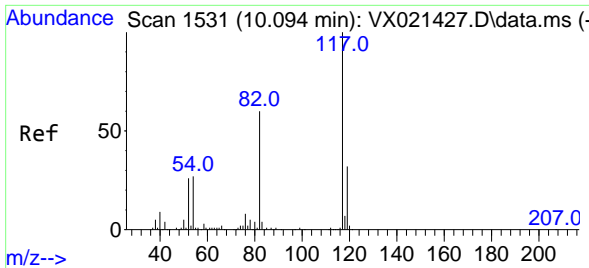
Tgt Ion: 98 Resp: 157286
 Ion Ratio Lower Upper
 98 100
 100 64.0 51.9 77.9



#62
 4-Bromofluorobenzene
 Concen: 53.28 ug/l
 RT: 11.118 min Scan# 1705
 Delta R.T. -0.000 min
 Lab File: VX021521.D
 Acq: 26 Mar 2021 05:36

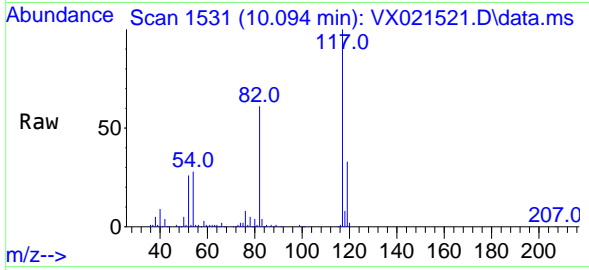
Tgt Ion: 95 Resp: 65275
 Ion Ratio Lower Upper
 95 100
 174 70.0 0.0 154.6
 176 70.2 0.0 155.8



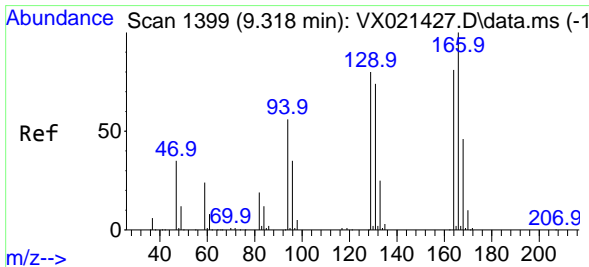
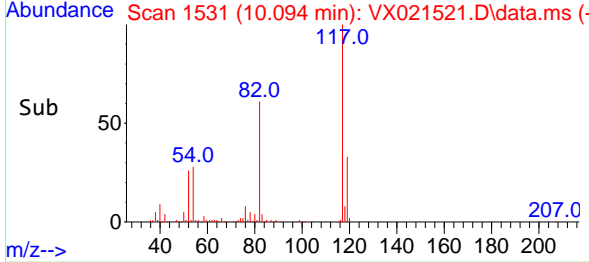
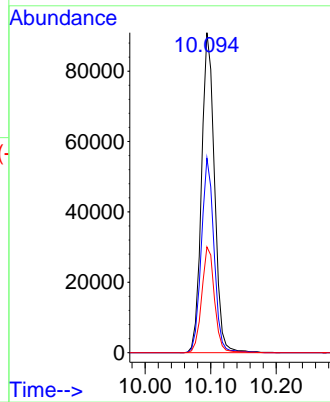


#63
 Chlorobenzene-d5
 Concen: 50.00 ug/l
 RT: 10.094 min Scan# 1531
 Delta R.T. 0.000 min
 Lab File: VX021521.D
 Acq: 26 Mar 2021 05:36

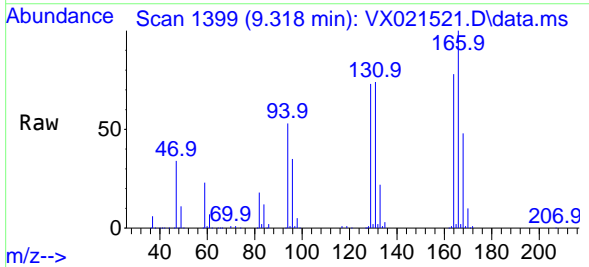
Instrument :
 MSVOA_X
 ClientSampled :
 MW-7B



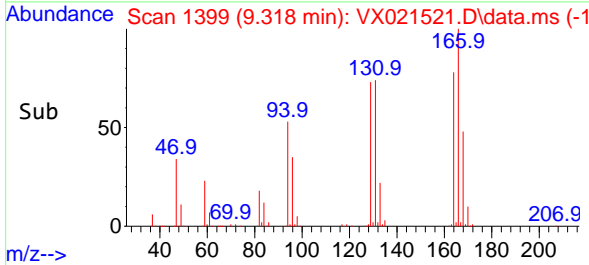
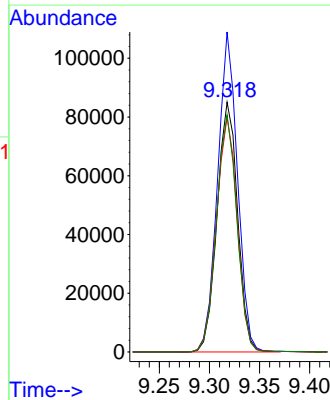
Tgt Ion:117 Resp: 125337
 Ion Ratio Lower Upper
 117 100
 82 60.8 47.4 71.2
 119 33.1 26.6 39.8

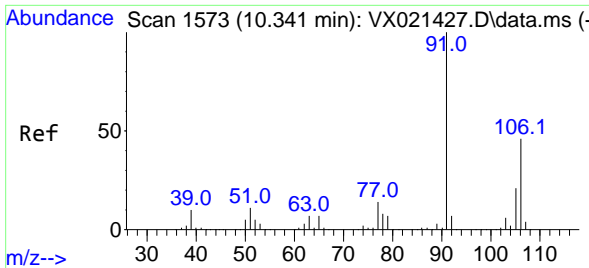


#64
 Tetrachloroethene
 Concen: 144.45 ug/l
 RT: 9.318 min Scan# 1399
 Delta R.T. -0.000 min
 Lab File: VX021521.D
 Acq: 26 Mar 2021 05:36



Tgt Ion:164 Resp: 121280
 Ion Ratio Lower Upper
 164 100
 166 128.1 103.4 155.2
 129 94.0 70.8 106.2
 131 94.8 72.5 108.7

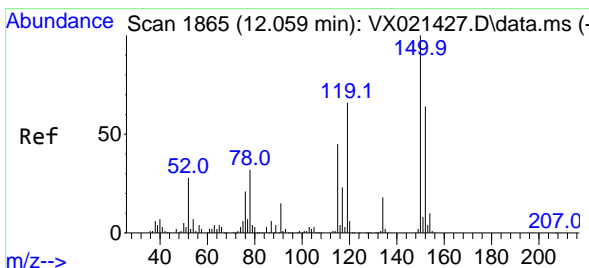
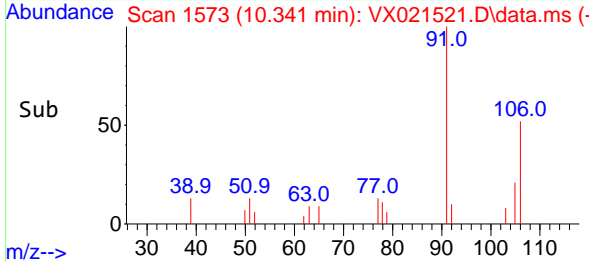
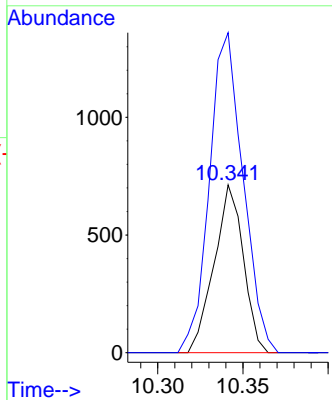
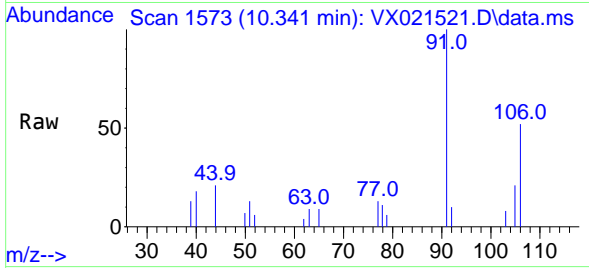




#68
 m/p-Xylenes
 Concen: 0.52 ug/l
 RT: 10.341 min Scan# 1573
 Delta R.T. 0.000 min
 Lab File: VX021521.D
 Acq: 26 Mar 2021 05:36

Instrument :
 MSVOA_X
 ClientSampled :
 MW-7B

Tgt Ion:106 Resp: 849
 Ion Ratio Lower Upper
 106 100
 91 220.0 162.8 244.2



#72
 1,4-Dichlorobenzene-d4
 Concen: 50.00 ug/l
 RT: 12.059 min Scan# 1865
 Delta R.T. 0.000 min
 Lab File: VX021521.D
 Acq: 26 Mar 2021 05:36

Tgt Ion:152 Resp: 58748
 Ion Ratio Lower Upper
 152 100
 115 61.6 41.1 123.3
 150 155.6 0.0 349.0

