

Data Path : Z:\VOASRV\HPCHEM1\MSVOA X\DATA\VX032619\
 Data File : VX008467.D
 Acq On : 26 Mar 2019 20:17
 Operator : JC/SP
 Sample : K2089-02DL 200X
 Misc : 5.0mL/MSVOA X/WATER
 ALS Vial : 23 Sample Multiplier: 1

Instrument :
 MSVOA_X
 ClientSampleID :
 MW-107DL

Quant Time: Mar 27 03:36:35 2019
 Quant Method : Z:\VOASRV\HPCHEM1\MSVOA_X\METHOD\82X032519W.M
 Quant Title : SW846 8260
 QLast Update : Tue Mar 26 07:57:20 2019
 Response via : Initial Calibration

Internal Standards	R.T.	QIon	Response	Conc	Units	Dev(Min)
1) Pentafluorobenzene	5.66	168	238884	50.00	ug/l	0.00
34) 1,4-Difluorobenzene	6.86	114	404230	50.00	ug/l	0.00
63) Chlorobenzene-d5	10.11	117	347247	50.00	ug/l	0.00
72) 1,4-Dichlorobenzene-d4	12.08	152	149096	50.00	ug/l	0.00

System Monitoring Compounds	R.T.	QIon	Response	Conc	Units	Dev(Min)
33) 1,2-Dichloroethane-d4	6.06	65	166324	45.93	ug/l	0.00
Spiked Amount				50.000		
Recovery						91.86%
35) Dibromofluoromethane	5.49	113	123739	46.95	ug/l	0.00
Spiked Amount				50.000		
Recovery						93.90%
50) Toluene-d8	8.71	98	507369	48.14	ug/l	0.00
Spiked Amount				50.000		
Recovery						96.28%
62) 4-Bromofluorobenzene	11.13	95	172348	44.13	ug/l	0.00
Spiked Amount				50.000		
Recovery						88.26%

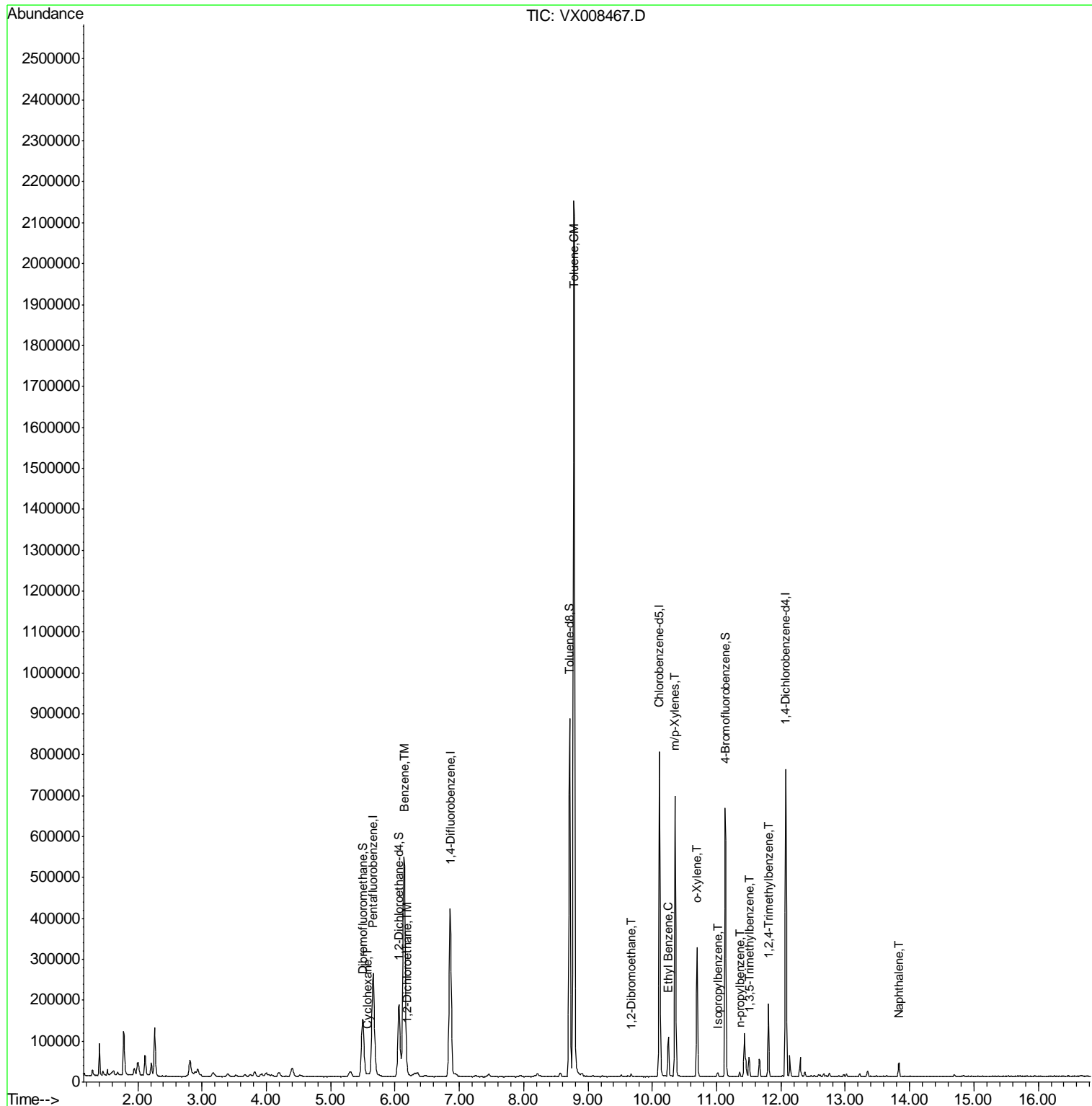
Target Compounds	R.T.	QIon	Response	Conc	Units	Qvalue
31) Cyclohexane	5.58	56	5204	0.896	ug/l	97
40) Benzene	6.14	78	632942	49.054	ug/l	99
42) 1,2-Dichloroethane	6.20	62	4535	0.960	ug/l	93
52) Toluene	8.78	92	800140	103.711	ug/l	99
61) 1,2-Dibromoethane	9.67	107	3351	1.046	ug/l	96
67) Ethyl Benzene	10.25	91	56048	3.933	ug/l	97
68) m/p-Xylenes	10.35	106	152684	29.448	ug/l	100
69) o-Xylene	10.69	106	65481	13.014	ug/l	99
73) Isopropylbenzene	11.02	105	4381	0.361	ug/l	98
78) n-propylbenzene	11.36	91	6530	0.460	ug/l	95
80) 1,3,5-Trimethylbenzene	11.51	105	20088	1.959	ug/l	100
84) 1,2,4-Trimethylbenzene	11.80	105	75097	7.240	ug/l	100
95) Naphthalene	13.83	128	20608	1.695	ug/l	98

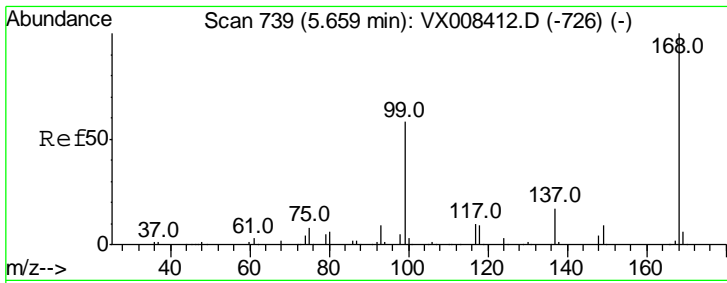
(#) = qualifier out of range (m) = manual integration (+) = signals summed

Data Path : Z:\VOASRV\HPCHEM1\MSVOA X\DATA\VX032619\
 Data File : VX008467.D
 Acq On : 26 Mar 2019 20:17
 Operator : JC/SP
 Sample : K2089-02DL 200X
 Misc : 5.0mL/MSVOA X/WATER
 ALS Vial : 23 Sample Multiplier: 1

Instrument :
 MSVOA_X
 Client Sampled :
 MW-107DL

Quant Time: Mar 27 03:36:35 2019
 Quant Method : Z:\VOASRV\HPCHEM1\MSVOA_X\METHOD\82X032519W.M
 Quant Title : SW846 8260
 QLast Update : Tue Mar 26 07:57:20 2019
 Response via : Initial Calibration

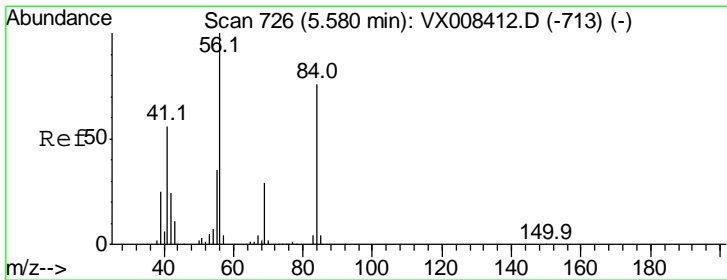
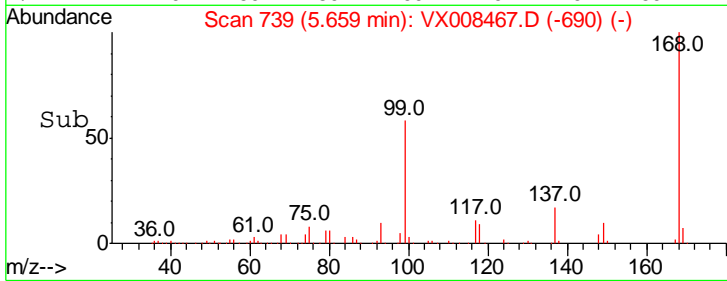
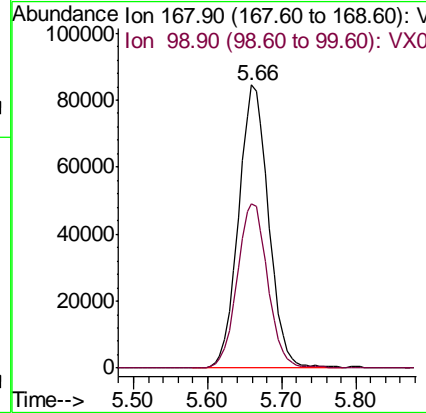
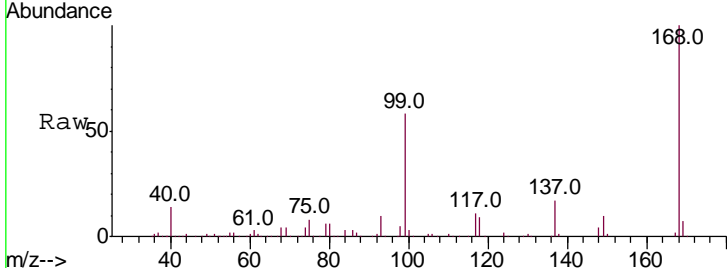




#1
 Pentafluorobenzene
 Concen: 50.000 ug/l
 RT: 5.66 min Scan# 739
 Delta R.T. 0.00 min
 Lab File: VX008467.D
 Acq: 26 Mar 2019 20:17

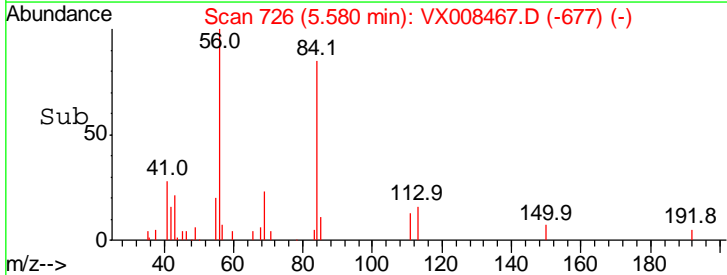
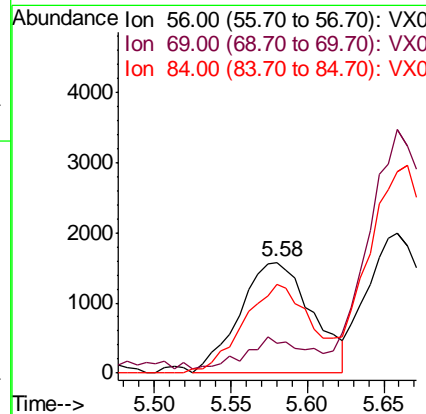
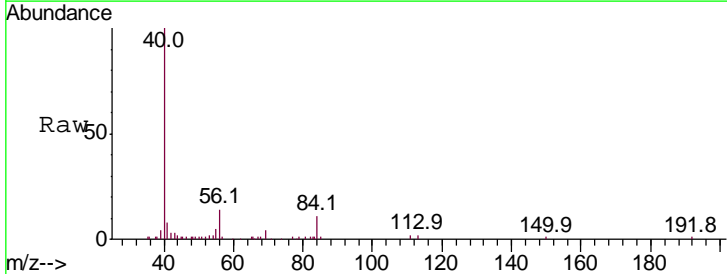
Instrument :
 MSVOA_X
ClientSampled :
 MW-107DL

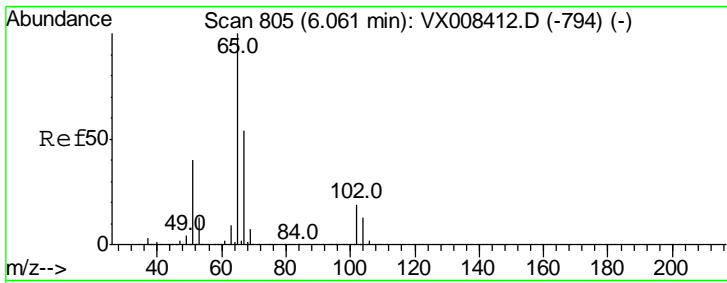
Tgt Ion: 168 Resp: 238884
 Ion Ratio Lower Upper
 168 100
 99 58.1 46.0 69.0



#31
 Cyclohexane
 Concen: 0.896 ug/l
 RT: 5.58 min Scan# 726
 Delta R.T. 0.00 min
 Lab File: VX008467.D
 Acq: 26 Mar 2019 20:17

Tgt Ion: 56 Resp: 5204
 Ion Ratio Lower Upper
 56 100
 69 23.2 23.2 34.8
 84 76.4 60.7 91.1

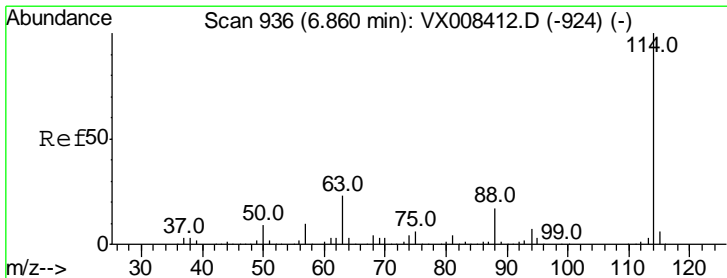
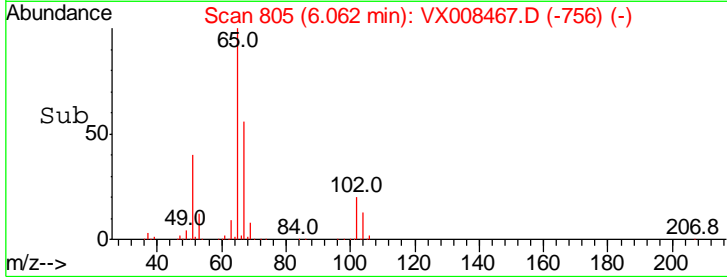
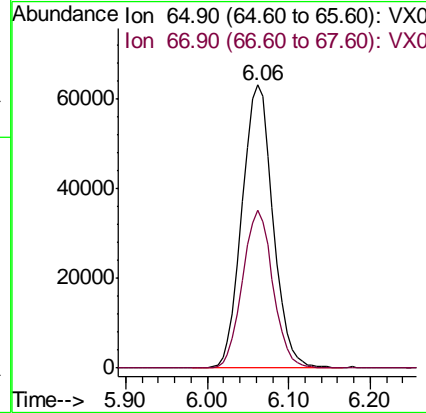
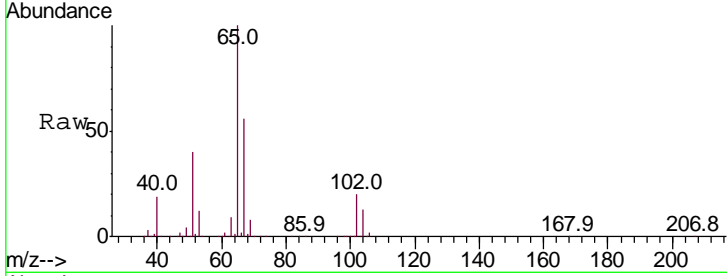




#33
 1,2-Dichloroethane-d4
 Concen: 45.926 ug/l
 RT: 6.06 min Scan# 805
 Delta R.T. 0.00 min
 Lab File: VX008467.D
 Acq: 26 Mar 2019 20:17

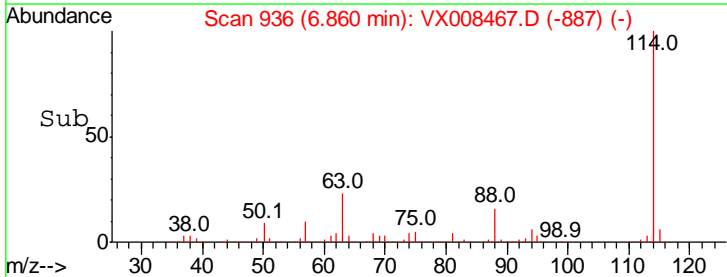
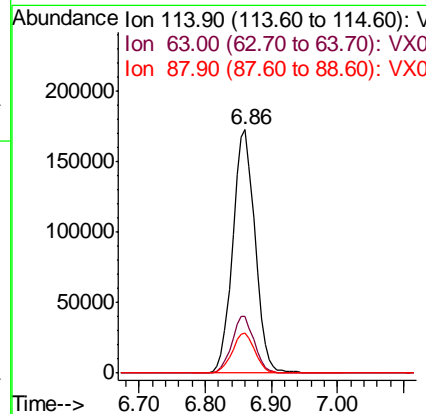
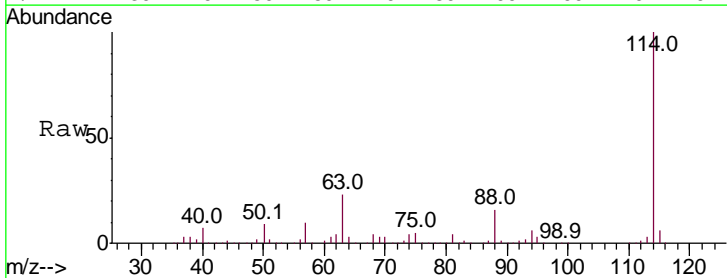
Instrument :
 MSVOA_X
 ClientSampled :
 MW-107DL

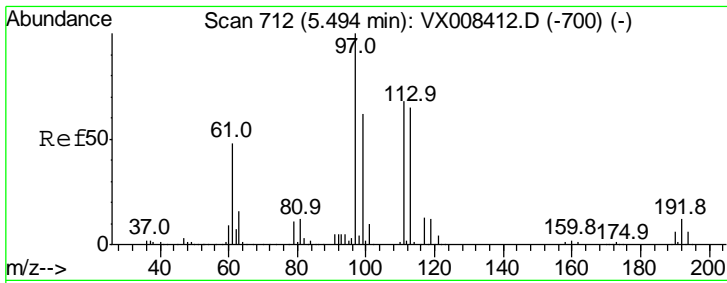
Tgt Ion	Resp	Lower	Upper
65	100		
67	54.8	0.0	109.4



#34
 1,4-Difluorobenzene
 Concen: 50.000 ug/l
 RT: 6.86 min Scan# 936
 Delta R.T. 0.00 min
 Lab File: VX008467.D
 Acq: 26 Mar 2019 20:17

Tgt Ion	Resp	Lower	Upper
114	100		
63	23.5	0.0	46.4
88	16.3	0.0	33.2

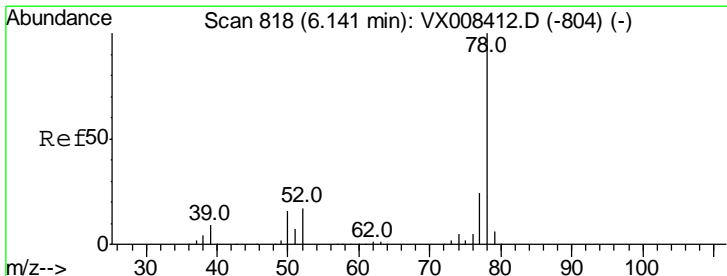
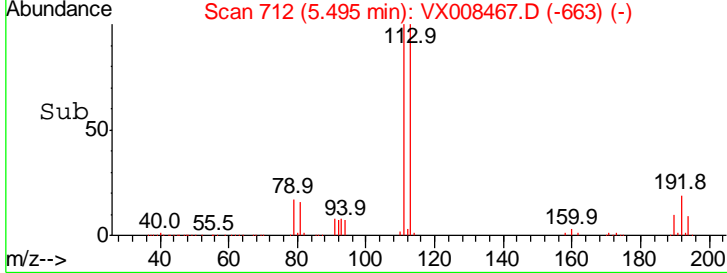
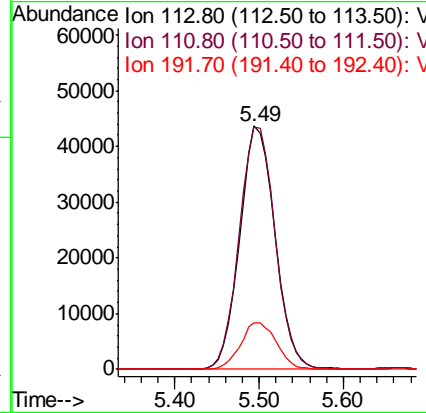
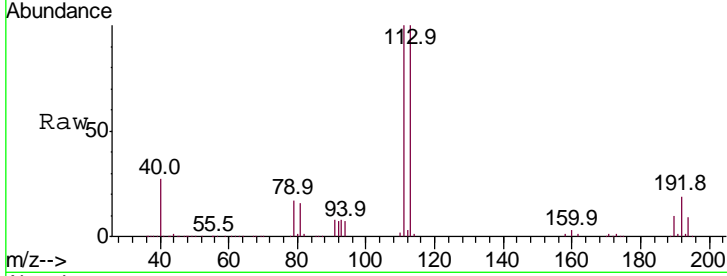




#35
 Dibromofluoromethane
 Concen: 46.946 ug/l
 RT: 5.49 min Scan# 712
 Delta R.T. 0.00 min
 Lab File: VX008467.D
 Acq: 26 Mar 2019 20:17

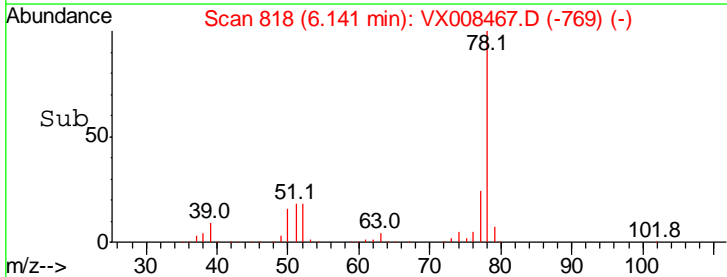
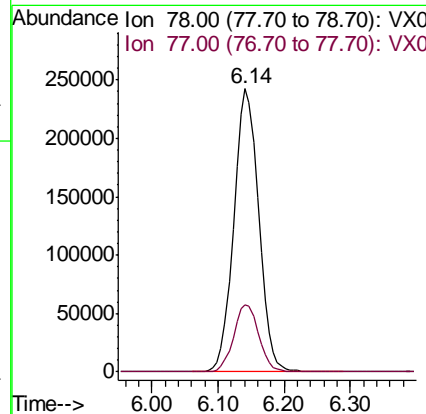
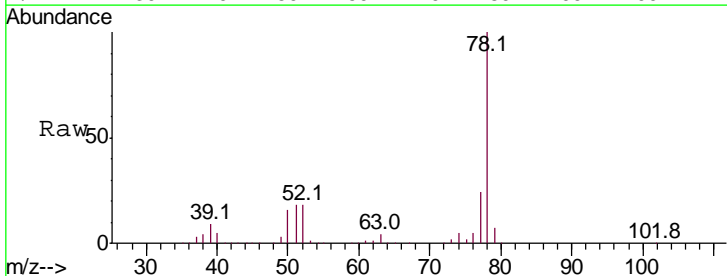
Instrument :
 MSVOA_X
 ClientSampleId :
 MW-107DL

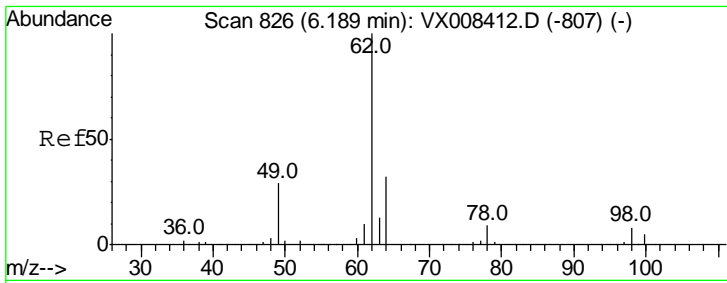
Tgt Ion	Resp	Lower	Upper
113	123739		
111	101.7	83.0	124.4
192	19.6	15.6	23.4



#40
 Benzene
 Concen: 49.054 ug/l
 RT: 6.14 min Scan# 818
 Delta R.T. 0.00 min
 Lab File: VX008467.D
 Acq: 26 Mar 2019 20:17

Tgt Ion	Resp	Lower	Upper
78	632942		
77	23.7	19.3	28.9

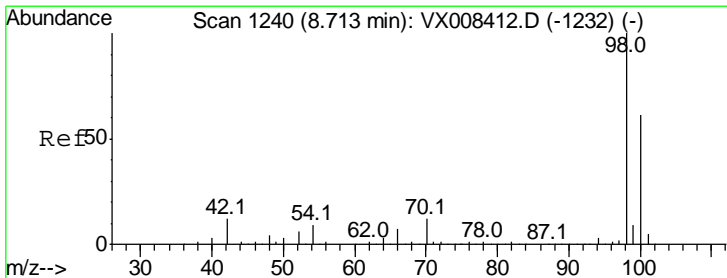
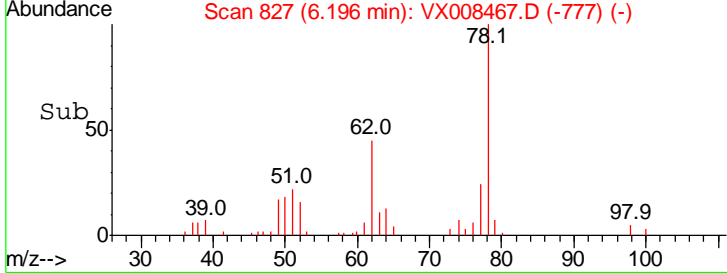
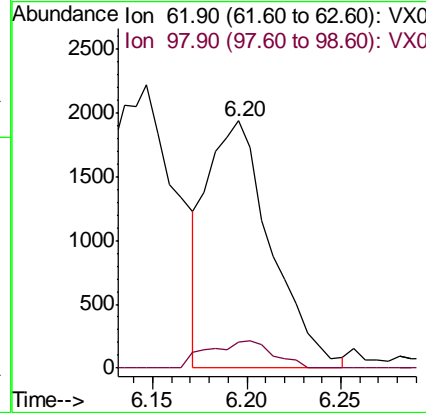
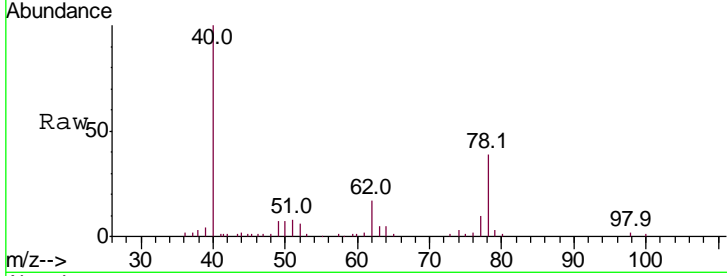




#42
 1,2-Dichloroethane
 Concen: 0.960 ug/l
 RT: 6.20 min Scan# 827
 Delta R.T. 0.01 min
 Lab File: VX008467.D
 Acq: 26 Mar 2019 20:17

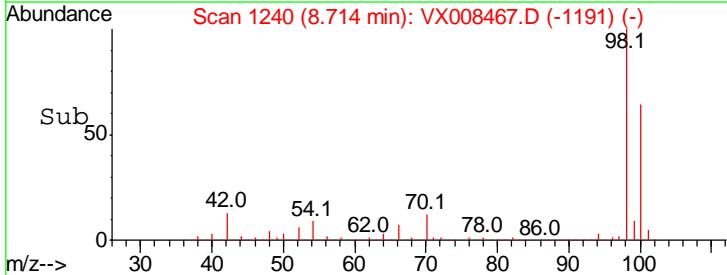
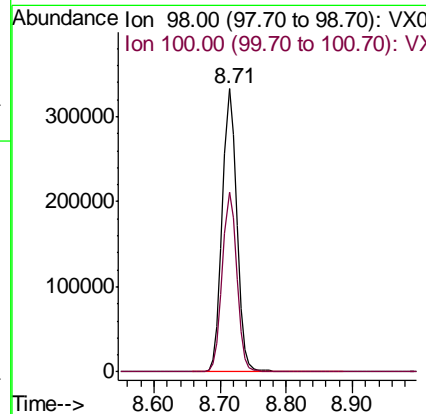
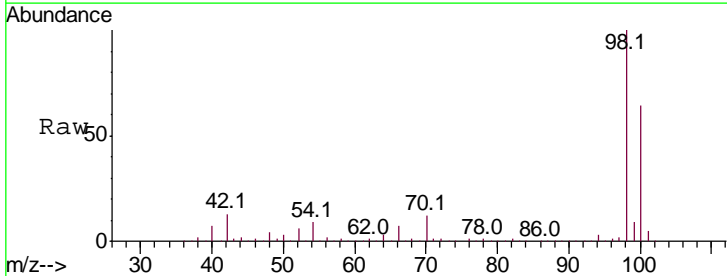
Instrument :
 MSVOA_X
ClientSampled :
 MW-107DL

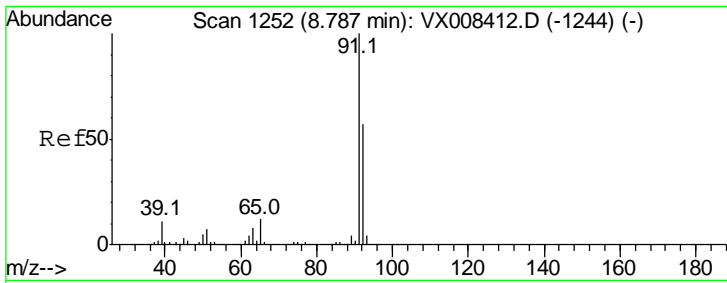
Tgt Ion	Resp	Lower	Upper
62	100	0.0	17.6
98	11.2	0.0	17.6



#50
 Toluene-d8
 Concen: 48.140 ug/l
 RT: 8.71 min Scan# 1240
 Delta R.T. 0.00 min
 Lab File: VX008467.D
 Acq: 26 Mar 2019 20:17

Tgt Ion	Resp	Lower	Upper
98	100	51.1	76.7
100	63.3	51.1	76.7

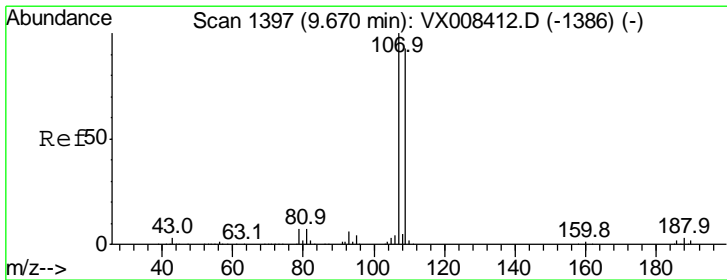
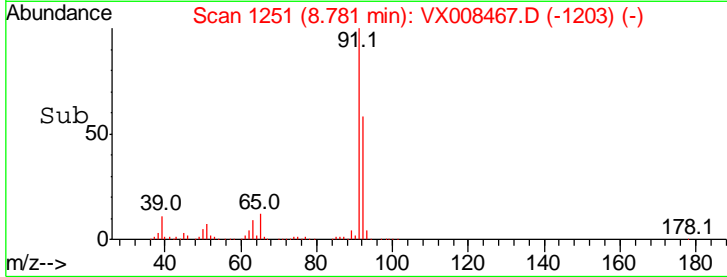
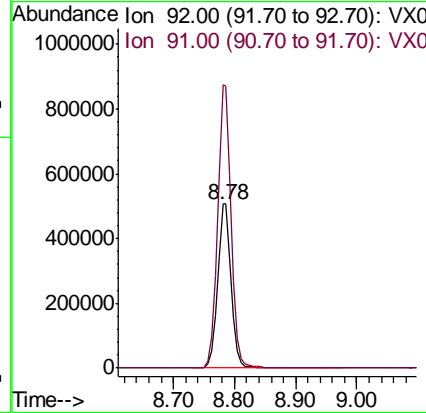
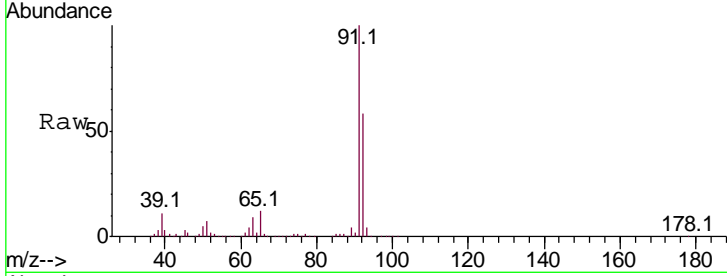




#52
 Toluene
 Concen: 103.711 ug/l
 RT: 8.78 min Scan# 1251
 Delta R.T. -0.01 min
 Lab File: VX008467.D
 Acq: 26 Mar 2019 20:17

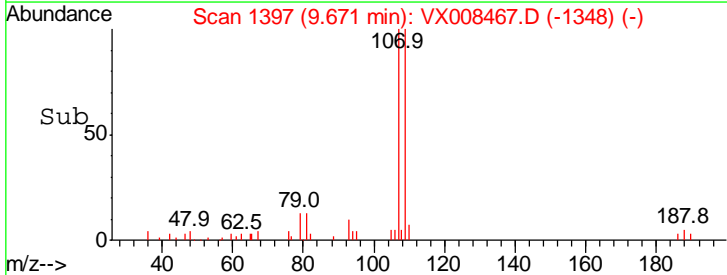
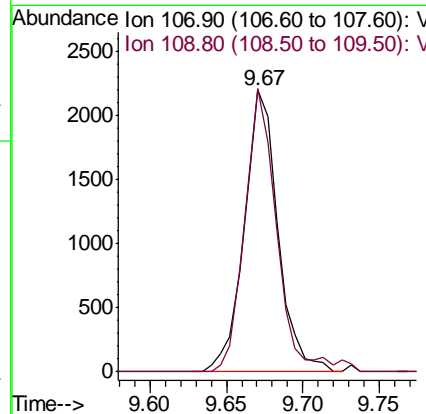
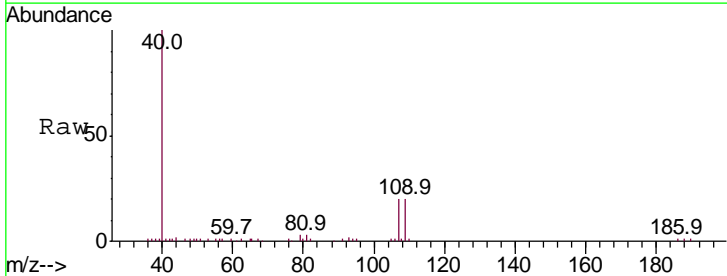
Instrument :
 MSVOA_X
ClientSampled :
 MW-107DL

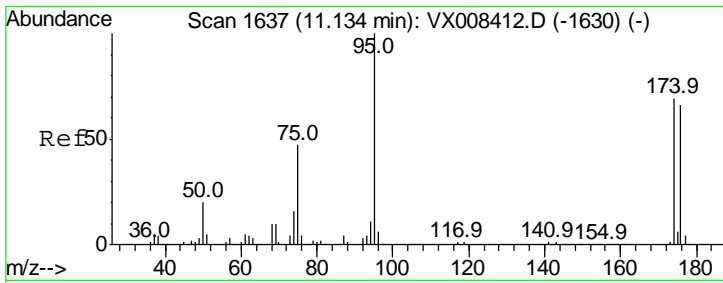
Tgt Ion	Resp	Lower	Upper
92	800140		
92	100		
91	173.9	140.2	210.4



#61
 1,2-Dibromoethane
 Concen: 1.046 ug/l
 RT: 9.67 min Scan# 1397
 Delta R.T. 0.00 min
 Lab File: VX008467.D
 Acq: 26 Mar 2019 20:17

Tgt Ion	Resp	Lower	Upper
107	3351		
107	100		
109	96.7	74.6	111.8

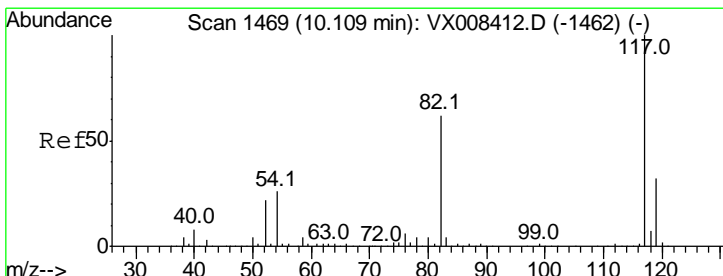
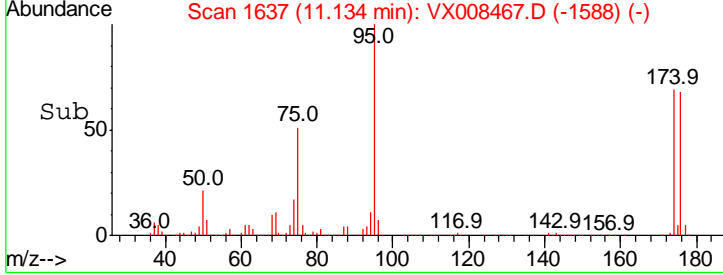
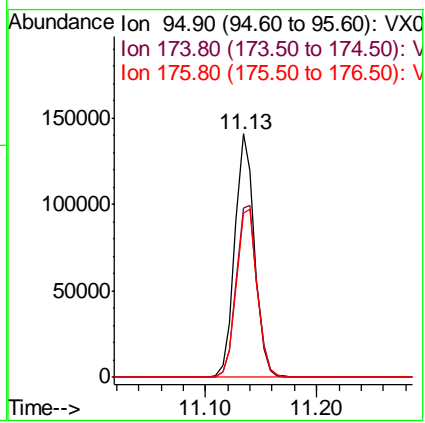
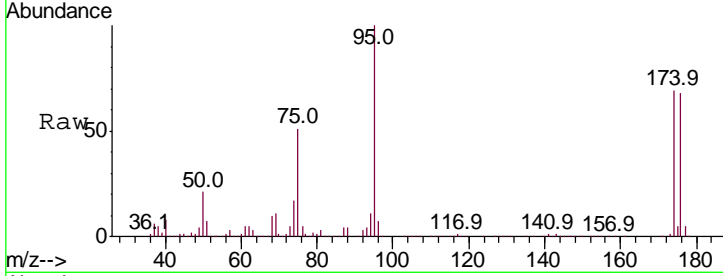




#62
 4-Bromofluorobenzene
 Concen: 44.130 ug/l
 RT: 11.13 min Scan# 1637
 Delta R.T. 0.00 min
 Lab File: VX008467.D
 Acq: 26 Mar 2019 20:17

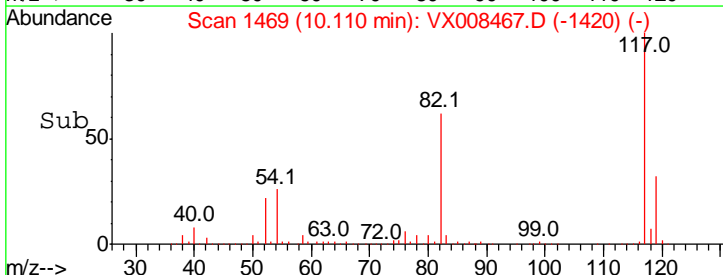
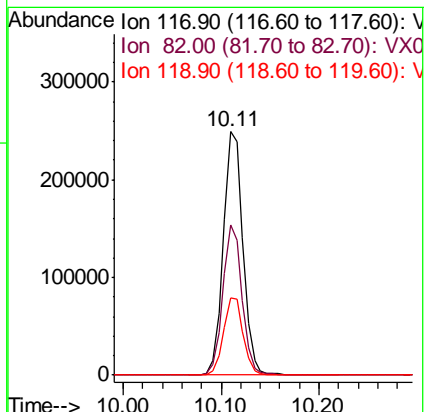
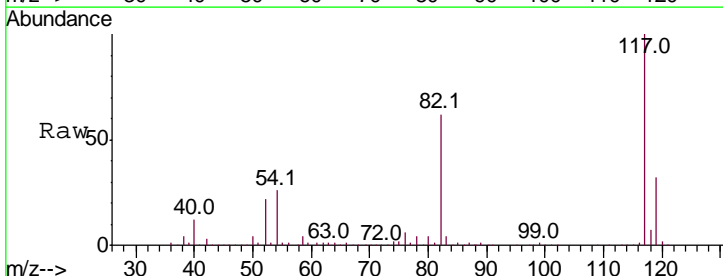
Instrument :
 MSVOA_X
 ClientSampled :
 MW-107DL

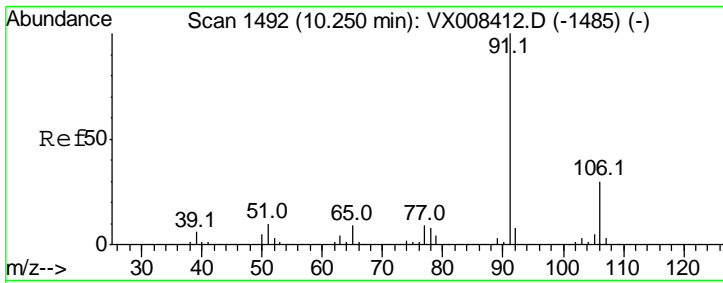
Tgt Ion	Resp	Lower	Upper
95	172348		
174	75.0	0.0	147.2
176	72.7	0.0	142.4



#63
 Chlorobenzene-d5
 Concen: 50.000 ug/l
 RT: 10.11 min Scan# 1469
 Delta R.T. 0.00 min
 Lab File: VX008467.D
 Acq: 26 Mar 2019 20:17

Tgt Ion	Resp	Lower	Upper
117	347247		
82	61.6	49.4	74.2
119	31.8	25.4	38.0

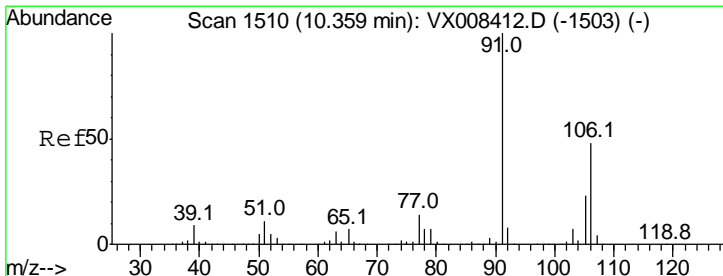
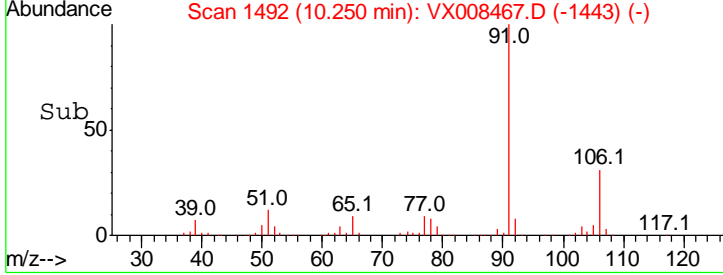
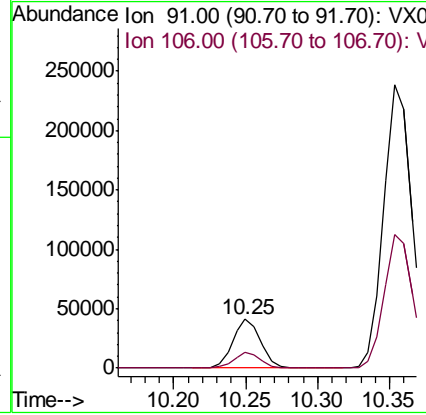
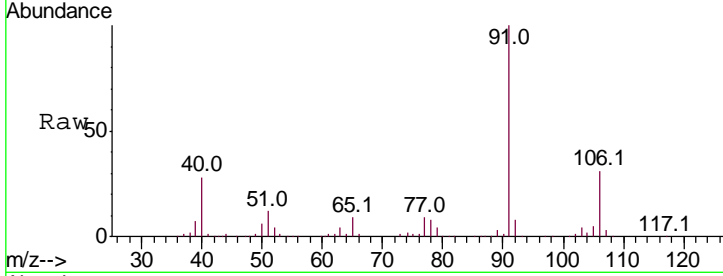




#67
 Ethyl Benzene
 Concen: 3.933 ug/l
 RT: 10.25 min Scan# 1492
 Delta R.T. 0.00 min
 Lab File: VX008467.D
 Acq: 26 Mar 2019 20:17

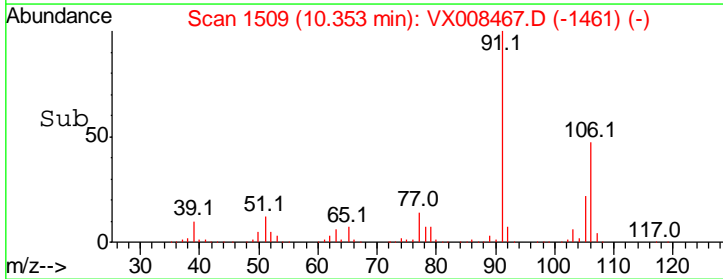
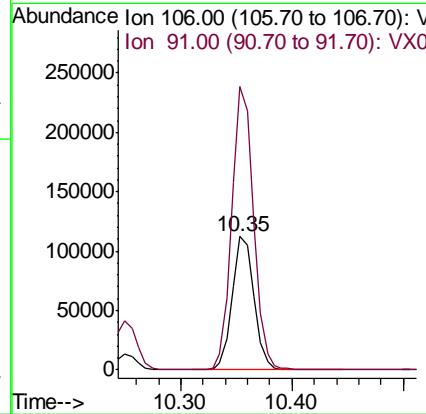
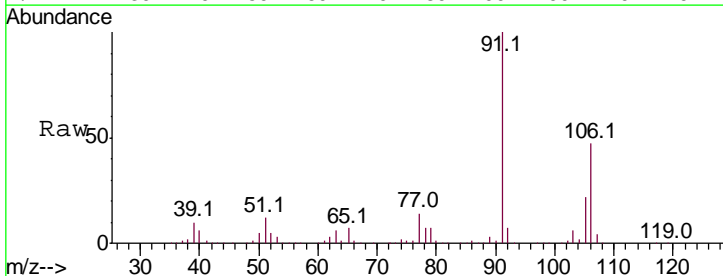
Instrument : MSVOA_X
 Client Sampled : MW-107DL

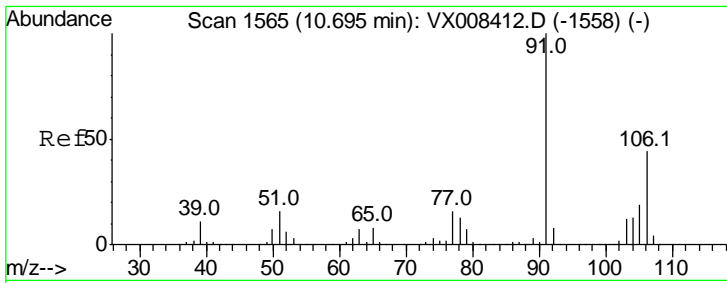
Tgt Ion: 91 Resp: 56048
 Ion Ratio Lower Upper
 91 100
 106 31.5 24.0 36.0



#68
 m/p-Xylenes
 Concen: 29.448 ug/l
 RT: 10.35 min Scan# 1509
 Delta R.T. -0.01 min
 Lab File: VX008467.D
 Acq: 26 Mar 2019 20:17

Tgt Ion: 106 Resp: 152684
 Ion Ratio Lower Upper
 106 100
 91 211.3 168.6 253.0



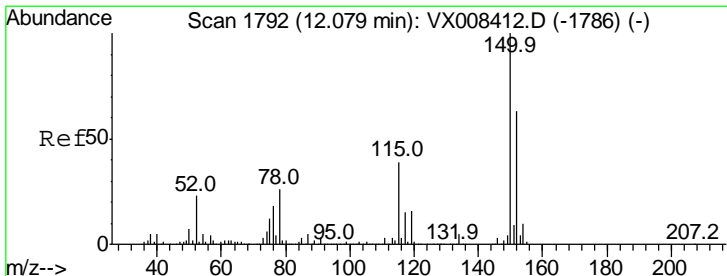
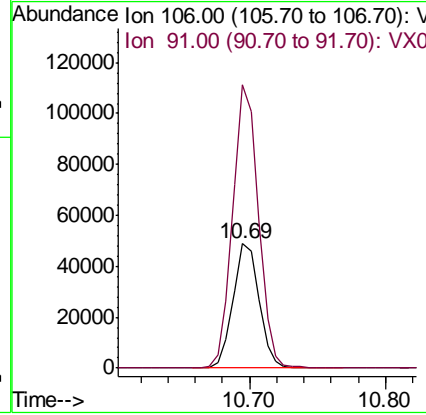
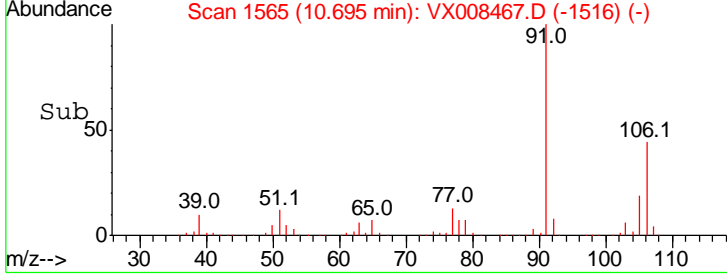
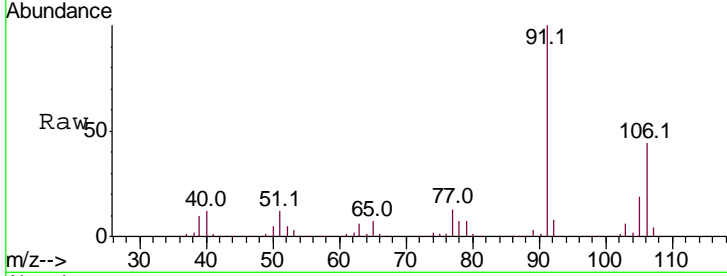


#69
 o-Xylene
 Concen: 13.014 ug/l
 RT: 10.69 min Scan# 1565
 Delta R.T. 0.00 min
 Lab File: VX008467.D
 Acq: 26 Mar 2019 20:17

Instrument :
 MSVOA_X
 ClientSampleID :
 MW-107DL

Tgt Ion:106 Resp: 65481

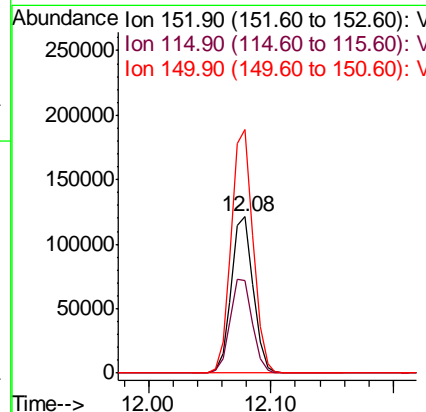
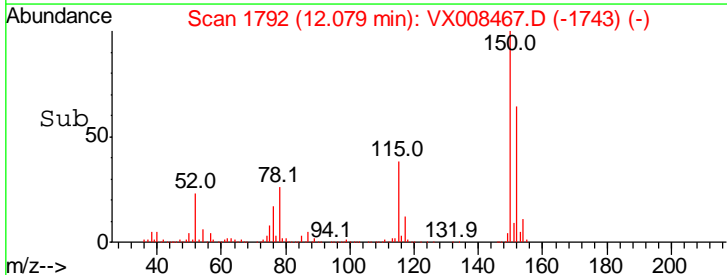
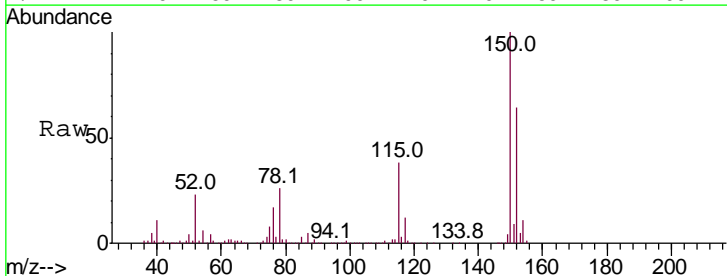
Ion	Ratio	Lower	Upper
106	100		
91	224.9	111.4	334.2

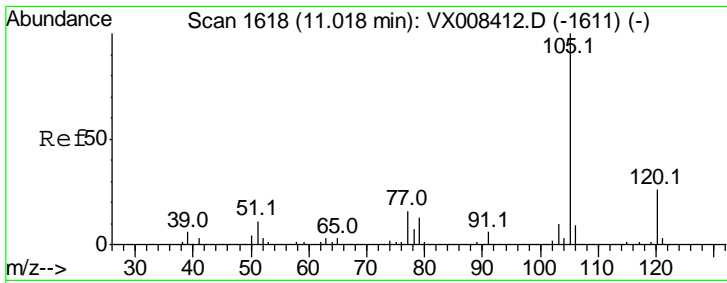


#72
 1,4-Dichlorobenzene-d4
 Concen: 50.000 ug/l
 RT: 12.08 min Scan# 1792
 Delta R.T. 0.00 min
 Lab File: VX008467.D
 Acq: 26 Mar 2019 20:17

Tgt Ion:152 Resp: 149096

Ion	Ratio	Lower	Upper
152	100		
115	61.3	43.5	130.5
150	155.8	0.0	348.8

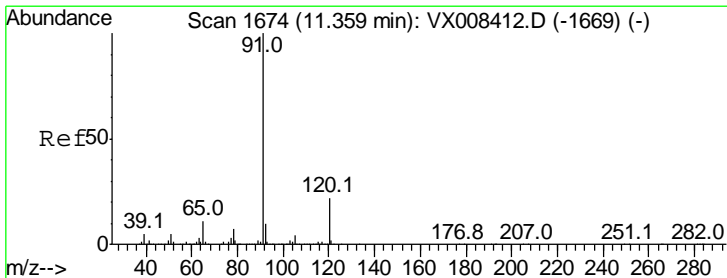
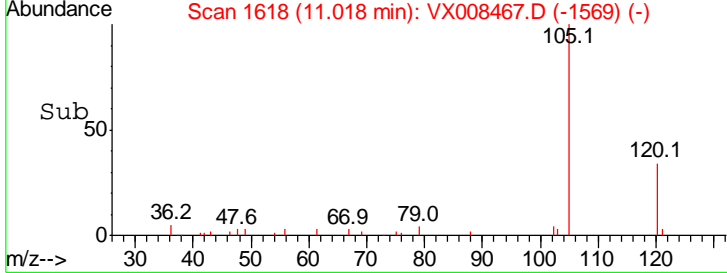
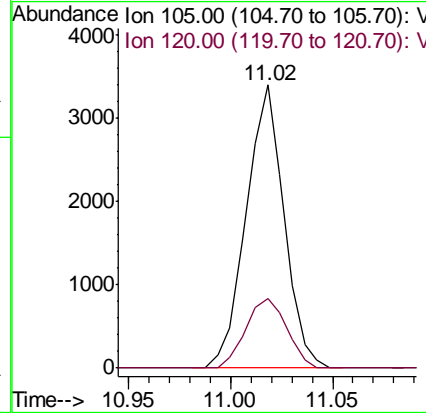
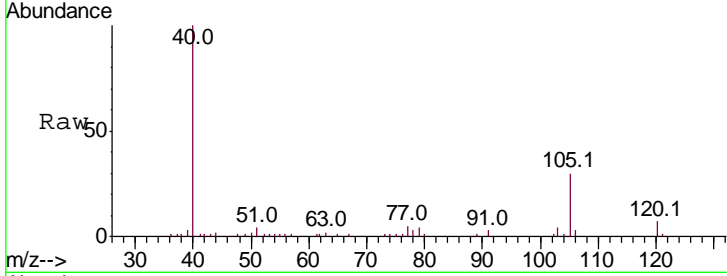




#73
 Isopropylbenzene
 Concen: 0.361 ug/l
 RT: 11.02 min Scan# 1618
 Delta R.T. 0.00 min
 Lab File: VX008467.D
 Acq: 26 Mar 2019 20:17

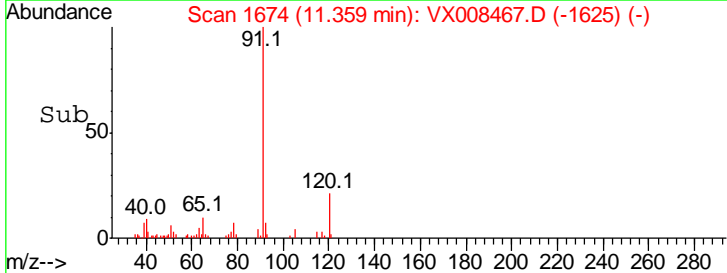
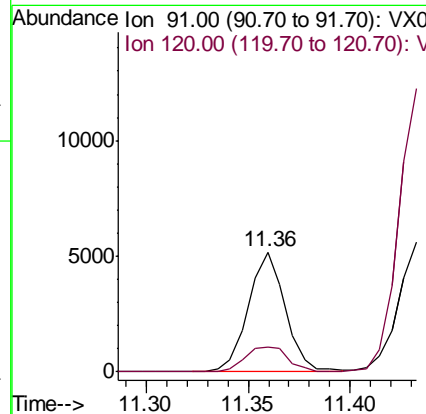
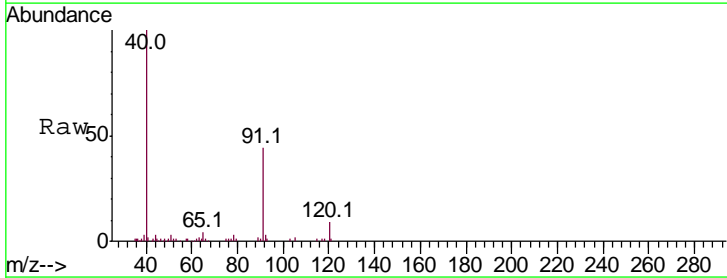
Instrument : MSVOA_X
 ClientSampled : MW-107DL

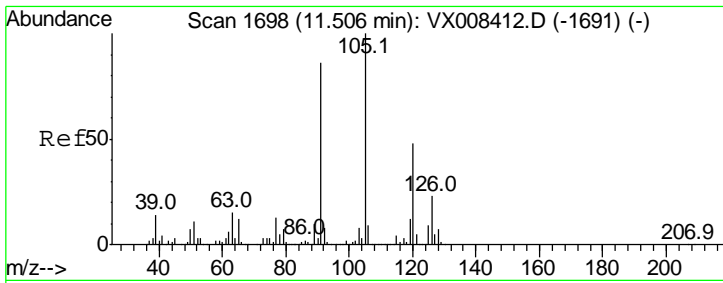
Tgt Ion: 105 Resp: 4381
 Ion Ratio Lower Upper
 105 100
 120 26.6 12.9 38.7



#78
 n-propylbenzene
 Concen: 0.460 ug/l
 RT: 11.36 min Scan# 1674
 Delta R.T. 0.00 min
 Lab File: VX008467.D
 Acq: 26 Mar 2019 20:17

Tgt Ion: 91 Resp: 6530
 Ion Ratio Lower Upper
 91 100
 120 24.0 10.8 32.4

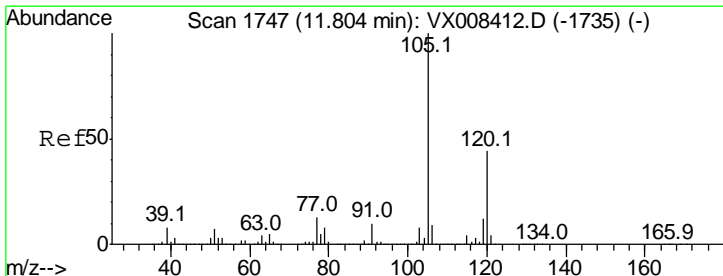
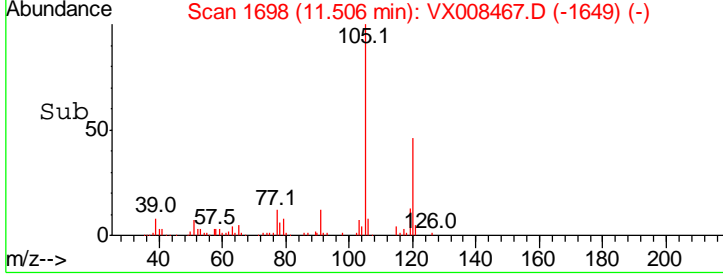
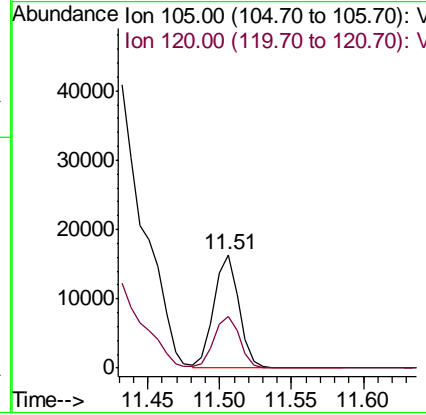
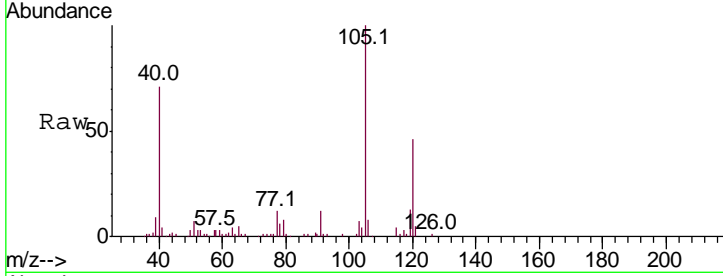




#80
 1,3,5-Trimethylbenzene
 Concen: 1.959 ug/l
 RT: 11.51 min Scan# 1698
 Delta R.T. 0.00 min
 Lab File: VX008467.D
 Acq: 26 Mar 2019 20:17

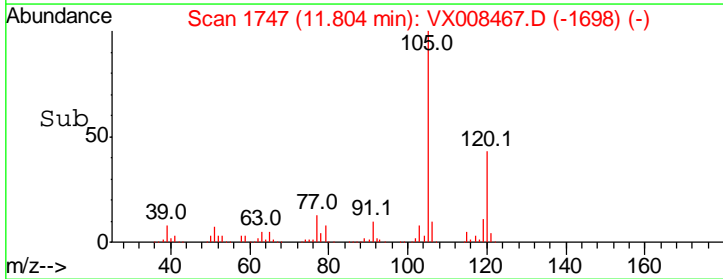
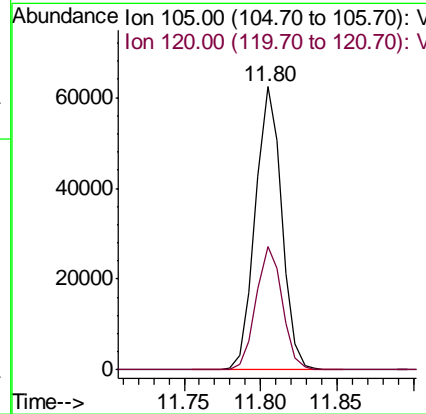
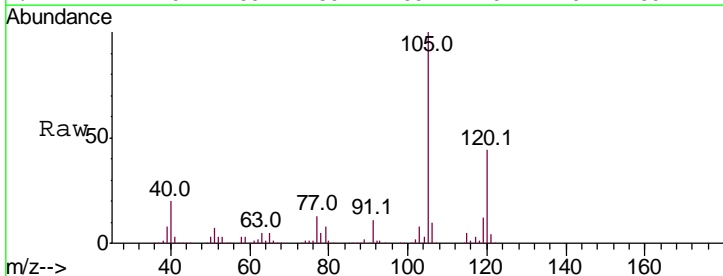
Instrument : MSVOA_X
 Client Sampled : MW-107DL

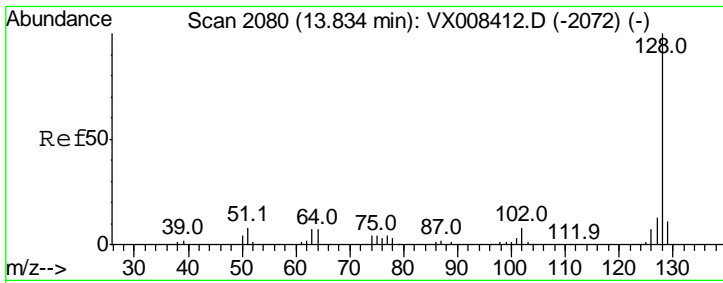
Tgt Ion	Resp	Lower	Upper
105	100		
120	46.6	23.4	70.3



#84
 1,2,4-Trimethylbenzene
 Concen: 7.240 ug/l
 RT: 11.80 min Scan# 1747
 Delta R.T. 0.00 min
 Lab File: VX008467.D
 Acq: 26 Mar 2019 20:17

Tgt Ion	Resp	Lower	Upper
105	100		
120	43.3	21.6	65.0





#95
 Naphthalene
 Concen: 1.695 ug/l
 RT: 13.83 min Scan# 2080
 Delta R.T. 0.00 min
 Lab File: VX008467.D
 Acq: 26 Mar 2019 20:17

Instrument : MSVOA_X
 ClientSampled : MW-107DL

Tot Ion: 128 Resp: 20608

Ion	Ratio	Lower	Upper
128	100		
127	14.1	10.4	15.6
129	11.0	8.7	13.1

