

Data Path : Z:\VOASRV\HPCHEM1\MSVOA X\DATA\VX032619\
 Data File : VX008453.D
 Acq On : 26 Mar 2019 13:43
 Operator : JC/SP
 Sample : K2088-04 200X
 Misc : 5.0mL/MSVOA X/WATER
 ALS Vial : 9 Sample Multiplier: 1

Instrument :
 MSVOA_X
 Client Sampled :
 MW-102

Integration Parameters: RTEINT.P

Integrator: RTE
 Smoothing : ON
 Sampling : 1
 Start Thrs: 0.2
 Stop Thrs : 0

Filtering: 5
 Min Area: 3 % of largest Peak
 Max Peaks: 100
 Peak Location: TOP

If leading or trailing edge < 100 prefer < Baseline drop else tangent >
 Peak separation: 5

Method : Z:\VOASRV\HPCHEM1\MSVOA_X\METHOD\82X032519W.M
 Title : SW846 8260

Signal : TIC

peak #	R.T. min	first scan	max scan	last scan	PK TY	peak height	corr. area	corr. % max.	% of total
1	1.404	35	41	46	rBV	83556	84218	1.98%	0.550%
2	1.788	99	104	114	rVB	114317	164094	3.86%	1.072%
3	2.001	134	139	151	rVB3	31945	65891	1.55%	0.431%
4	2.117	153	158	163	rBV	50160	70329	1.65%	0.460%
5	2.215	168	174	178	rVV	33658	59624	1.40%	0.390%
6	2.263	178	182	192	rVB	105564	167662	3.94%	1.096%
7	2.812	258	272	281	rBV3	40369	111111	2.61%	0.726%
8	2.934	288	292	308	rVB4	20518	57051	1.34%	0.373%
9	4.403	523	533	543	rBV3	18214	53723	1.26%	0.351%
10	5.501	698	713	723	rBV	138206	406795	9.56%	2.658%
11	5.659	730	739	756	rVB	242788	684871	16.09%	4.476%
12	6.061	795	805	811	rBV	170492	447482	10.51%	2.924%
13	6.141	811	818	831	rVB	442946	1141036	26.81%	7.457%
14	6.860	926	936	947	rBV	393639	944480	22.19%	6.172%
15	8.713	1230	1240	1246	rBV	829061	1295770	30.44%	8.468%
16	8.787	1246	1252	1268	rVB	2727261	4256502	100.00%	27.816%
17	10.110	1463	1469	1481	rBV	766714	1038574	24.40%	6.787%
18	10.250	1487	1492	1499	rBV	201170	259173	6.09%	1.694%
19	10.353	1504	1509	1518	rVB	798502	1083470	25.45%	7.080%
20	10.695	1560	1565	1575	rVB	384572	515798	12.12%	3.371%
21	11.134	1631	1637	1648	rBV	609663	776524	18.24%	5.074%
22	11.432	1681	1686	1694	rVV	110417	191480	4.50%	1.251%
23	11.506	1694	1698	1706	rVB	53943	69652	1.64%	0.455%
24	11.664	1719	1724	1729	rBV	47012	60194	1.41%	0.393%
25	11.804	1741	1747	1754	rBV	198648	235611	5.54%	1.540%
26	12.079	1786	1792	1798	rBV	688947	870177	20.44%	5.686%
27	12.140	1798	1802	1808	rVB	56260	68586	1.61%	0.448%
28	12.298	1822	1828	1835	rBV2	50057	71858	1.69%	0.470%
29	13.835	2075	2080	2088	rVB	38261	50821	1.19%	0.332%

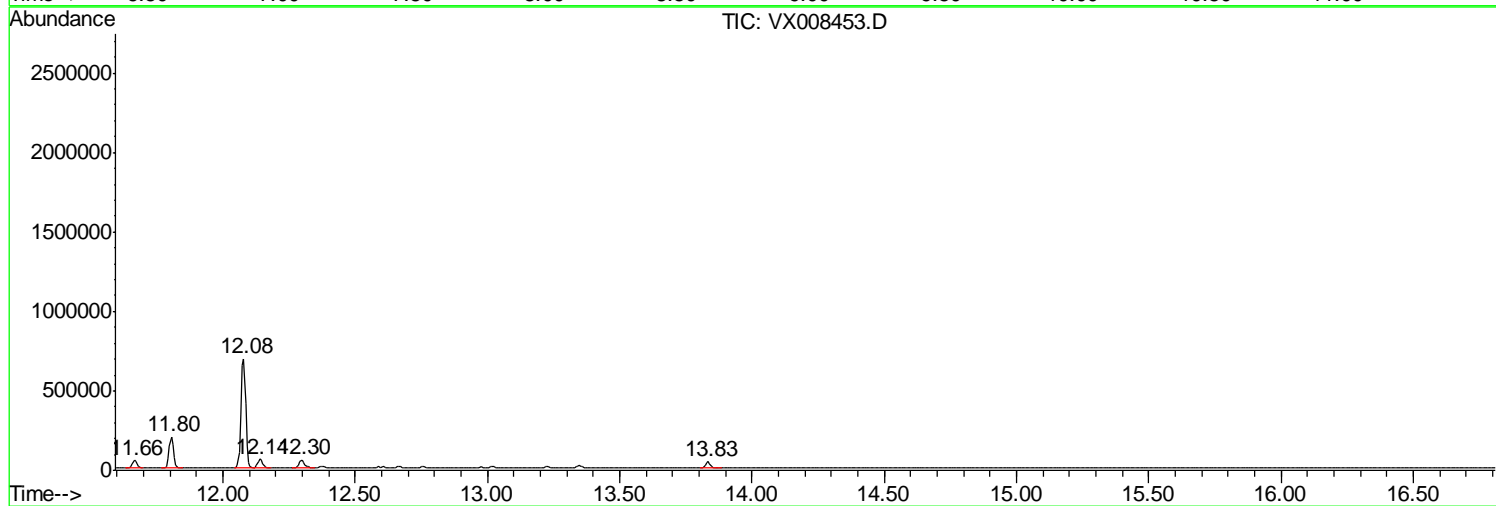
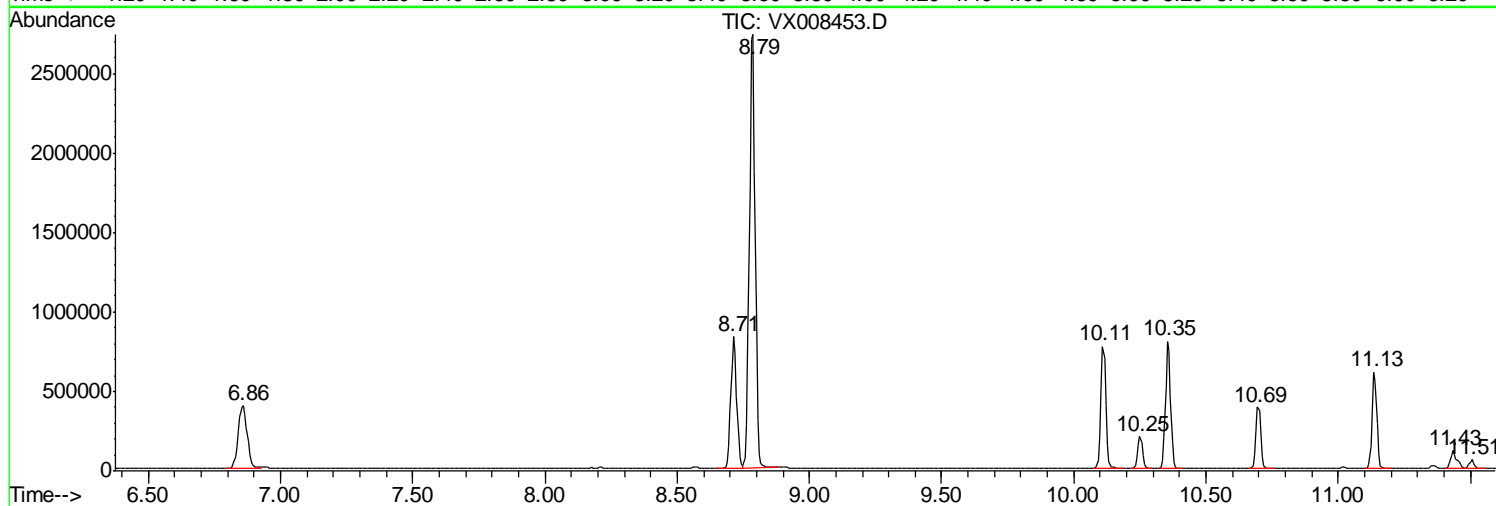
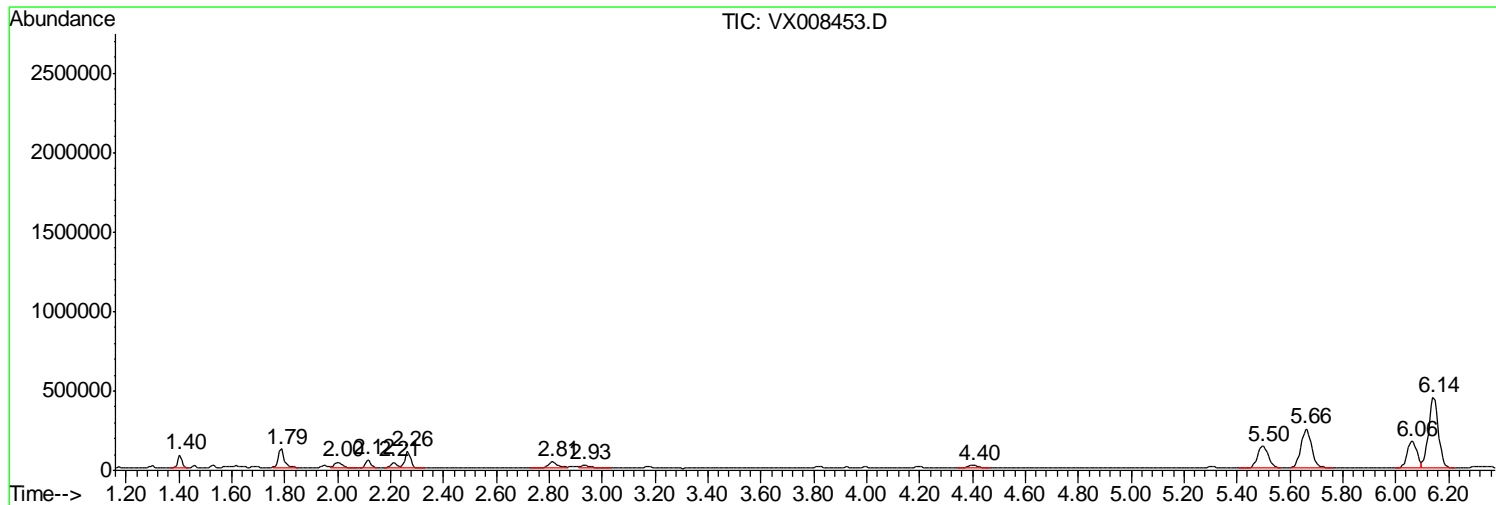
Sum of corrected areas: 15302557

Data Path : Z:\VOASRV\HPCHEM1\MSVOA X\DATA\VX032619\
Data File : VX008453.D
Acq On : 26 Mar 2019 13:43
Operator : JC/SP
Sample : K2088-04 200X
Misc : 5.0mL/MSVOA X/WATER
ALS Vial : 9 Sample Multiplier: 1

Instrument :
MSVOA_X
ClientSampled :
MW-102

Quant Method : Z:\VOASRV\HPCHEM1\MSVOA_X\METHOD\82X032519W.M
Quant Title : SW846 8260

TIC Library : C:\DATABASE\NIST11.L
TIC Integration Parameters: LSCINT.P



Data Path : Z:\VOASRV\HPCHEM1\MSVOA X\DATA\VX032619\
 Data File : VX008453.D
 Acq On : 26 Mar 2019 13:43
 Operator : JC/SP
 Sample : K2088-04 200X
 Misc : 5.0mL/MSVOA X/WATER
 ALS Vial : 9 Sample Multiplier: 1

Instrument :
 MSVOA_X
 ClientSampled :
 MW-102

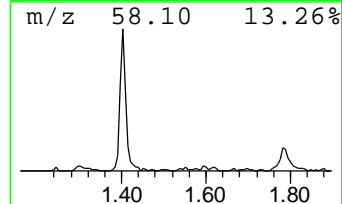
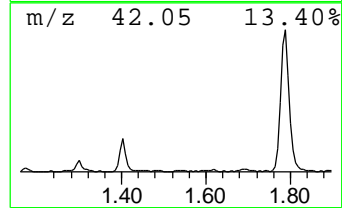
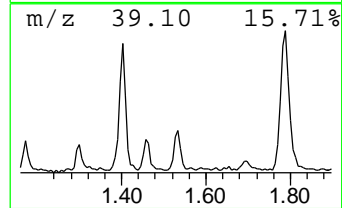
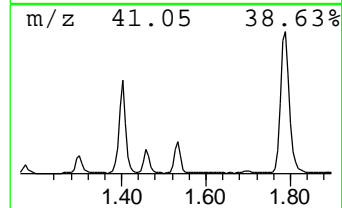
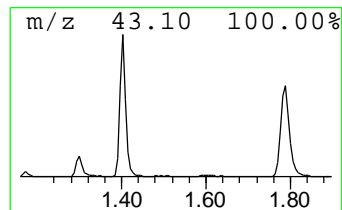
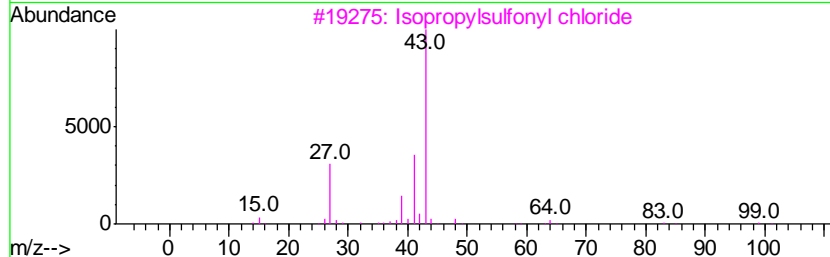
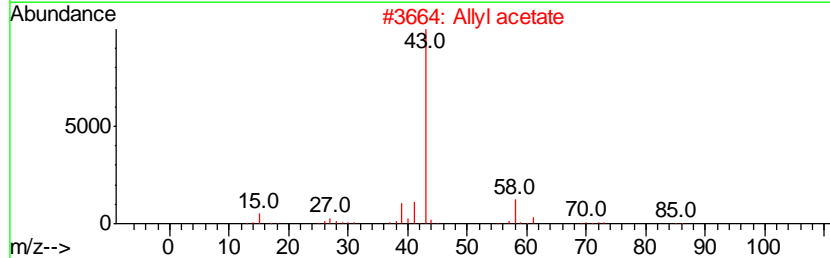
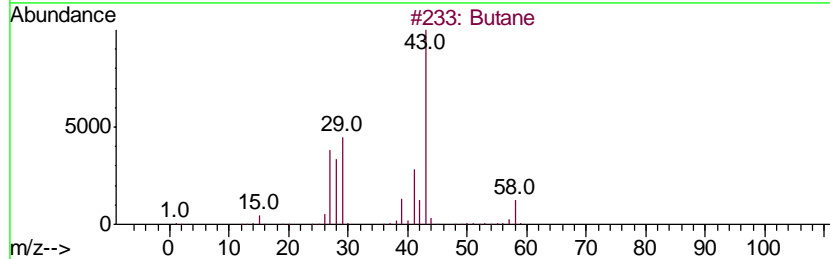
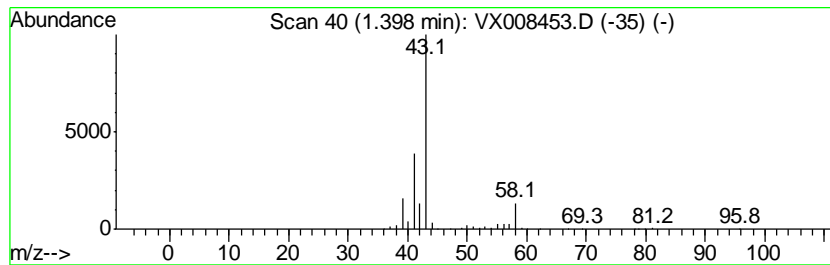
Quant Method : Z:\VOASRV\HPCHEM1\MSVOA_X\METHOD\82X032519W.M
 Quant Title : SW846 8260

TIC Library : C:\DATABASE\NIST11.L
 TIC Integration Parameters: LSCINT.P

 Peak Number 1 Butane Concentration Rank 5

R.T.	EstConc	Area	Relative to ISTD	R.T.
1.40	6.15 ug/l	84218	Pentafluorobenzene	5.66

Hit#	of	Tentative ID	MW	MolForm	CAS#	Qual
1	5	Butane	58	C4H10	000106-97-8	72
2		Allyl acetate	100	C5H8O2	000591-87-7	9
3		Isopropylsulfonyl chloride	142	C3H7ClO2S	010147-37-2	9
4		Propane, 1-nitro-	89	C3H7NO2	000108-03-2	9
5		Isobutane	58	C4H10	000075-28-5	9



Data Path : Z:\VOASRV\HPCHEM1\MSVOA X\DATA\VX032619\
 Data File : VX008453.D
 Acq On : 26 Mar 2019 13:43
 Operator : JC/SP
 Sample : K2088-04 200X
 Misc : 5.0mL/MSVOA X/WATER
 ALS Vial : 9 Sample Multiplier: 1

Instrument :
 MSVOA_X
 ClientSampled :
 MW-102

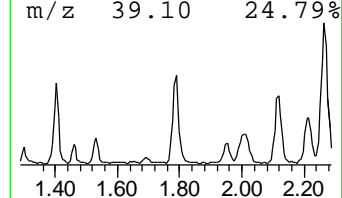
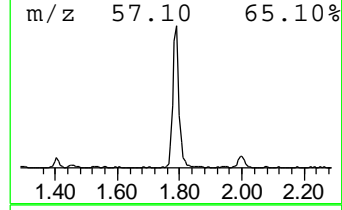
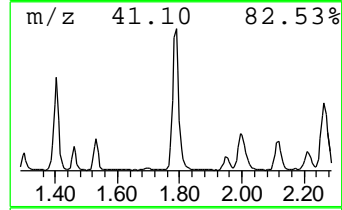
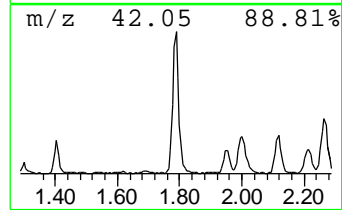
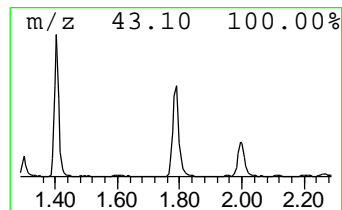
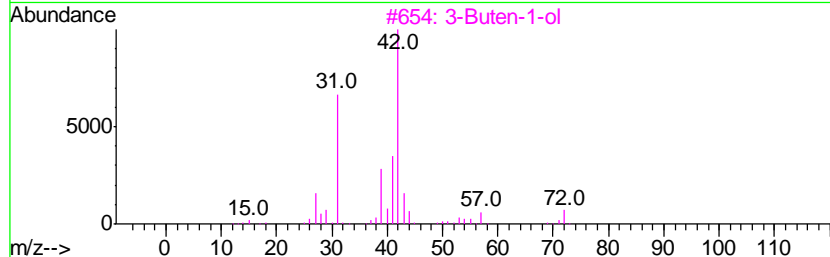
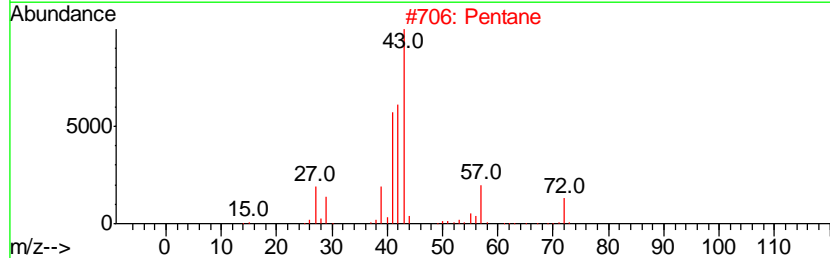
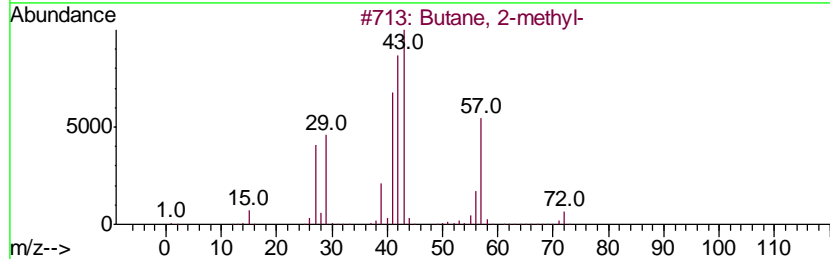
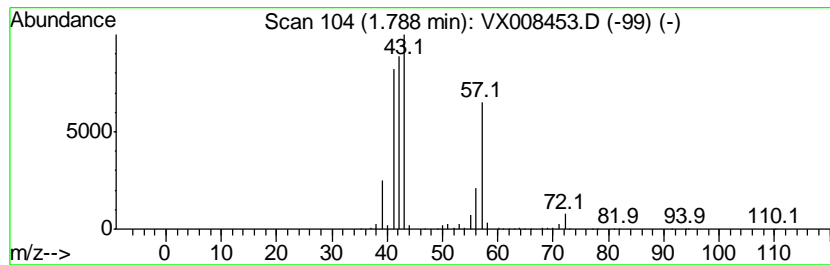
Quant Method : Z:\VOASRV\HPCHEM1\MSVOA_X\METHOD\82X032519W.M
 Quant Title : SW846 8260

TIC Library : C:\DATABASE\NIST11.L
 TIC Integration Parameters: LSCINT.P

 Peak Number 2 Butane, 2-methyl- Concentration Rank 2

R.T.	EstConc	Area	Relative to ISTD	R.T.
1.79	11.98 ug/l	164094	Pentafluorobenzene	5.66

Hit#	of	Tentative ID	MW	MolForm	CAS#	Qual
1	5	Butane, 2-methyl-	72	C5H12	000078-78-4	91
2		Pentane	72	C5H12	000109-66-0	39
3		3-Buten-1-ol	72	C4H8O	000627-27-0	28
4		1-Butene	56	C4H8	000106-98-9	9
5		1-Propene, 2-methyl-	56	C4H8	000115-11-7	9



Data Path : Z:\VOASRV\HPCHEM1\MSVOA X\DATA\VX032619\
 Data File : VX008453.D
 Acq On : 26 Mar 2019 13:43
 Operator : JC/SP
 Sample : K2088-04 200X
 Misc : 5.0mL/MSVOA X/WATER
 ALS Vial : 9 Sample Multiplier: 1

Instrument :
 MSVOA_X
 ClientSampled :
 MW-102

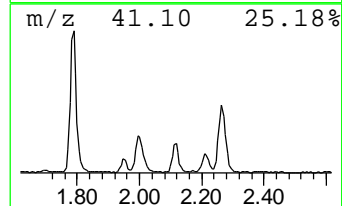
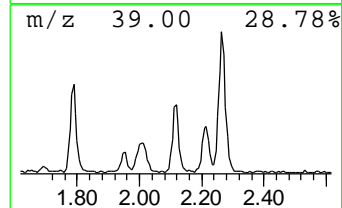
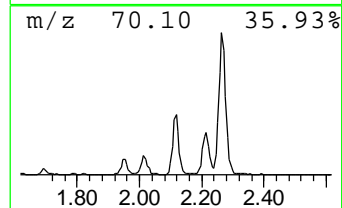
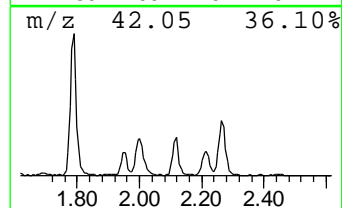
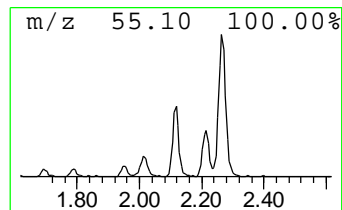
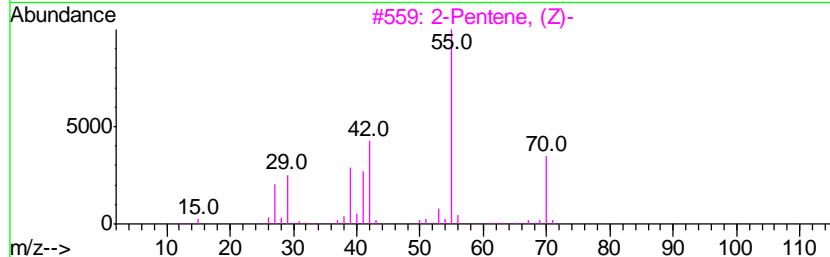
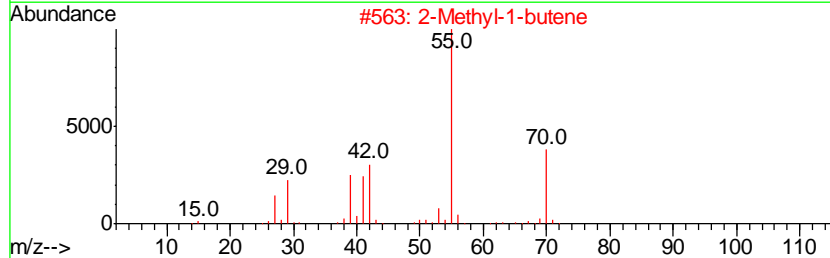
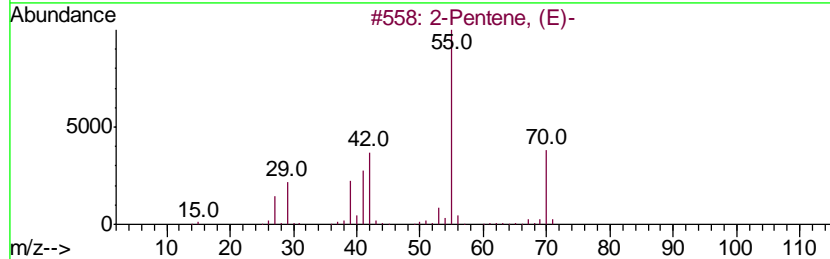
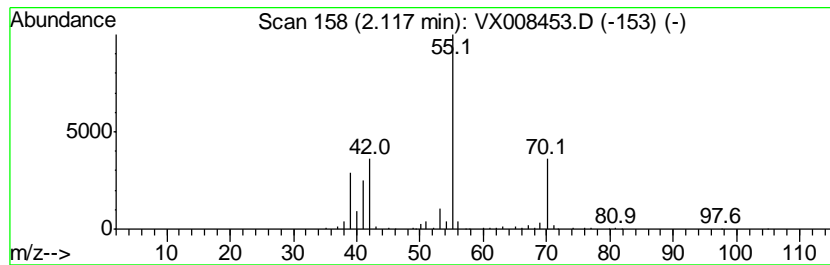
Quant Method : Z:\VOASRV\HPCHEM1\MSVOA_X\METHOD\82X032519W.M
 Quant Title : SW846 8260

TIC Library : C:\DATABASE\NIST11.L
 TIC Integration Parameters: LSCINT.P

 Peak Number 3 2-Pentene, (E)- Concentration Rank 6

R.T.	EstConc	Area	Relative to ISTD	R.T.
2.12	5.13 ug/l	70329	Pentafluorobenzene	5.66

Hit#	of	Tentative ID	MW	MolForm	CAS#	Qual
1	5	2-Pentene, (E)-	70	C5H10	000646-04-8	90
2		2-Methyl-1-butene	70	C5H10	000563-46-2	90
3		2-Pentene, (Z)-	70	C5H10	000627-20-3	90
4		2-Pentene	70	C5H10	000109-68-2	90
5		2-Butene, 2-methyl-	70	C5H10	000513-35-9	87



Data Path : Z:\VOASRV\HPCHEM1\MSVOA X\DATA\VX032619\
 Data File : VX008453.D
 Acq On : 26 Mar 2019 13:43
 Operator : JC/SP
 Sample : K2088-04 200X
 Misc : 5.0mL/MSVOA X/WATER
 ALS Vial : 9 Sample Multiplier: 1

Instrument :
 MSVOA_X
 ClientSampled :
 MW-102

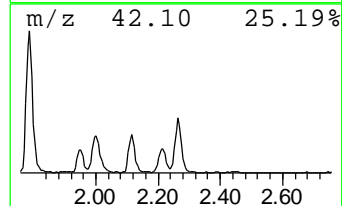
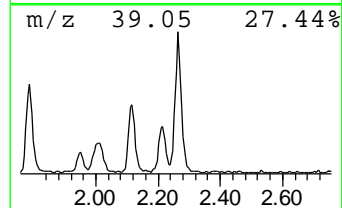
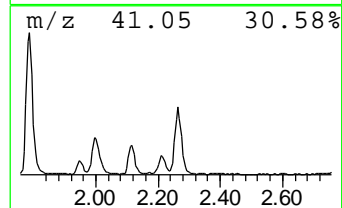
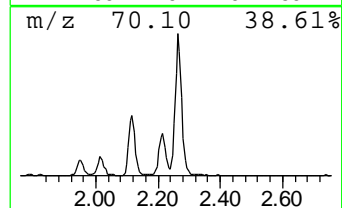
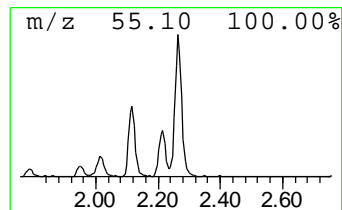
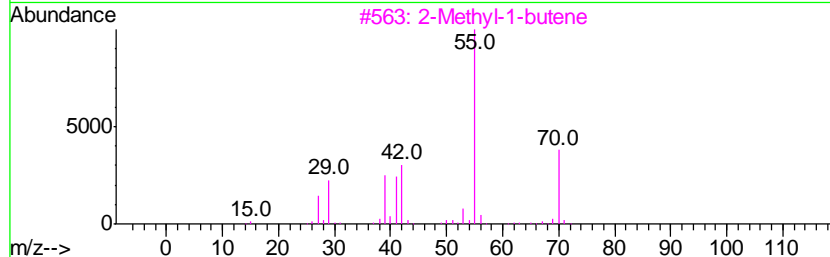
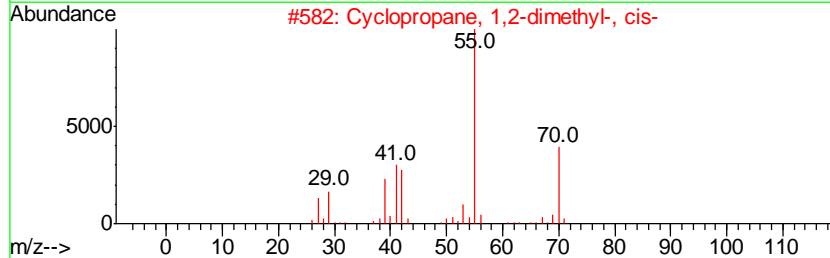
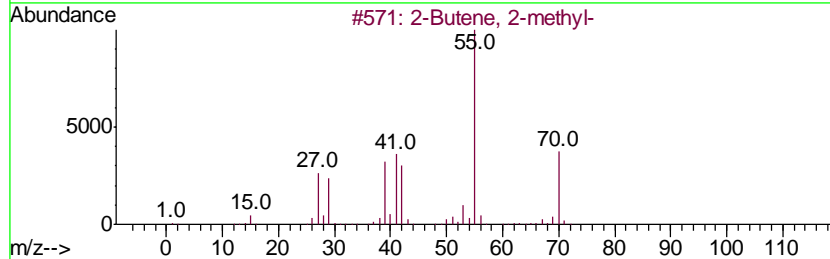
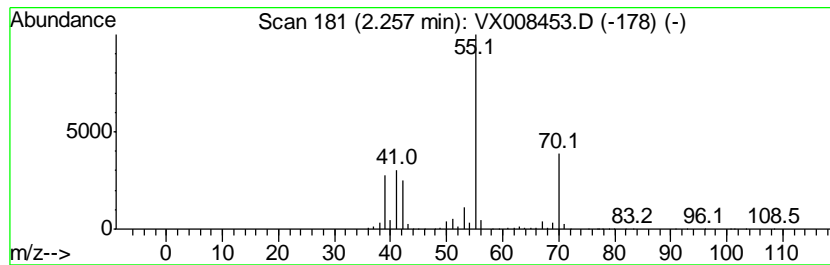
Quant Method : Z:\VOASRV\HPCHEM1\MSVOA_X\METHOD\82X032519W.M
 Quant Title : SW846 8260

TIC Library : C:\DATABASE\NIST11.L
 TIC Integration Parameters: LSCINT.P

 Peak Number 4 2-Butene, 2-methyl- Concentration Rank 1

R.T.	EstConc	Area	Relative to ISTD	R.T.
2.26	12.24 ug/l	167662	Pentafluorobenzene	5.66

Hit#	of	Tentative ID	MW	MolForm	CAS#	Qual
1	5	2-Butene, 2-methyl-	70	C5H10	000513-35-9	91
2		Cyclopropane, 1,2-dimethyl-, cis-	70	C5H10	000930-18-7	91
3		2-Methyl-1-butene	70	C5H10	000563-46-2	87
4		Cyclopropane, 1,2-dimethyl-, trans-	70	C5H10	002402-06-4	80
5		2-Pentene, (E)-	70	C5H10	000646-04-8	68



Data Path : Z:\VOASRV\HPCHEM1\MSVOA X\DATA\VX032619\
 Data File : VX008453.D
 Acq On : 26 Mar 2019 13:43
 Operator : JC/SP
 Sample : K2088-04 200X
 Misc : 5.0mL/MSVOA X/WATER
 ALS Vial : 9 Sample Multiplier: 1

Instrument :
 MSVOA_X
 ClientSampled :
 MW-102

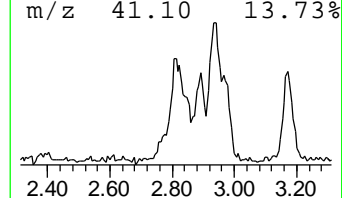
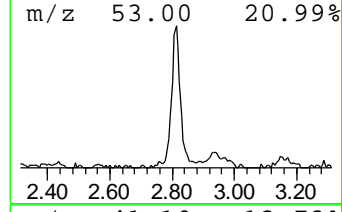
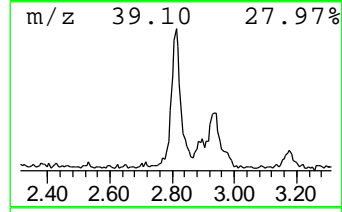
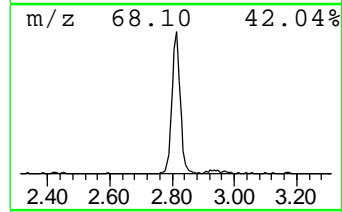
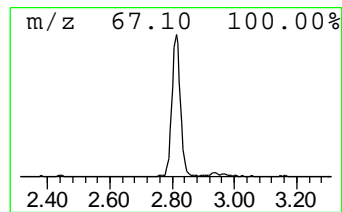
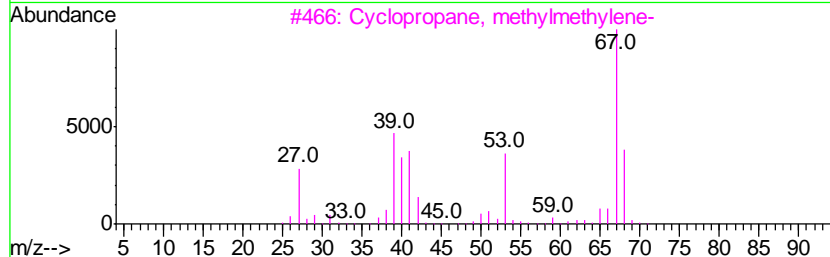
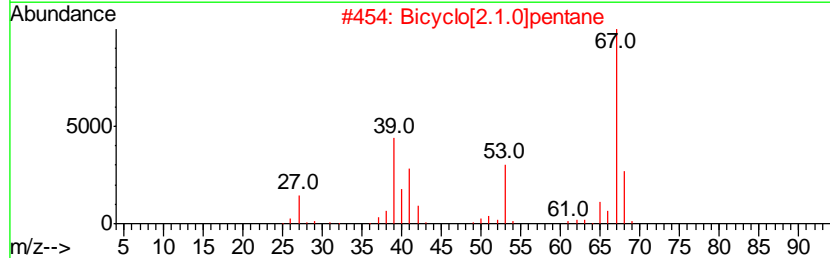
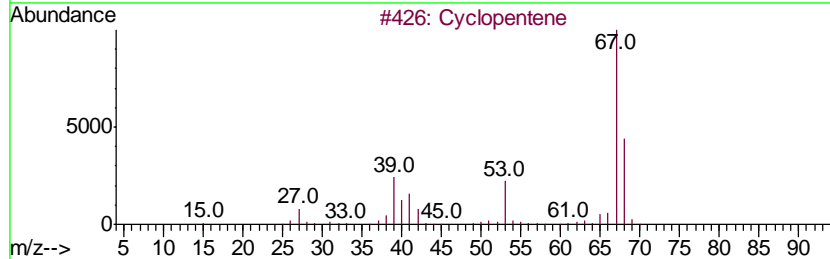
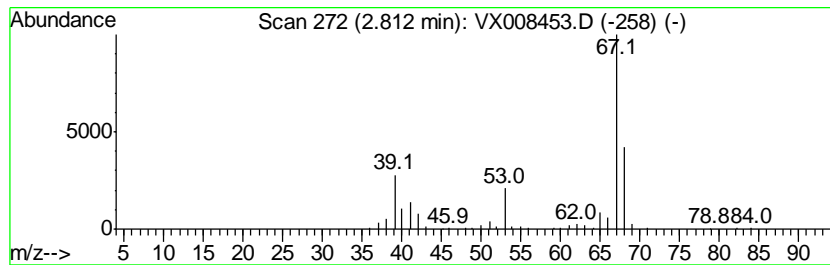
Quant Method : Z:\VOASRV\HPCHEM1\MSVOA_X\METHOD\82X032519W.M
 Quant Title : SW846 8260

TIC Library : C:\DATABASE\NIST11.L
 TIC Integration Parameters: LSCINT.P

 Peak Number 5 Cyclopentene Concentration Rank 4

R.T.	EstConc	Area	Relative to ISTD	R.T.
2.81	8.11 ug/l	111111	Pentafluorobenzene	5.66

Hit#	of	Tentative ID	MW	MolForm	CAS#	Qual
1	5	Cyclopentene	68	C5H8	000142-29-0	91
2		Bicyclo[2.1.0]pentane	68	C5H8	000185-94-4	64
3		Cyclopropane, methylmethylene-	68	C5H8	018631-84-0	59
4		1,4-Pentadiene	68	C5H8	000591-93-5	58
5		Cyclopropane, ethylidene-	68	C5H8	018631-83-9	53



Data Path : Z:\VOASRV\HPCHEM1\MSVOA X\DATA\VX032619\
 Data File : VX008453.D
 Acq On : 26 Mar 2019 13:43
 Operator : JC/SP
 Sample : K2088-04 200X
 Misc : 5.0mL/MSVOA X/WATER
 ALS Vial : 9 Sample Multiplier: 1

Instrument :
 MSVOA_X
 ClientSampled :
 MW-102

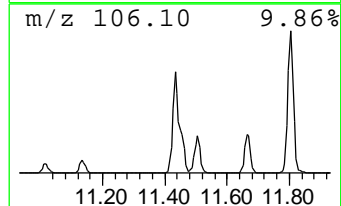
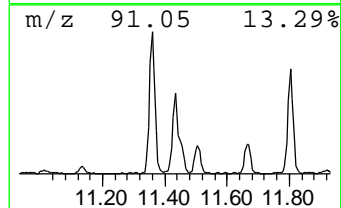
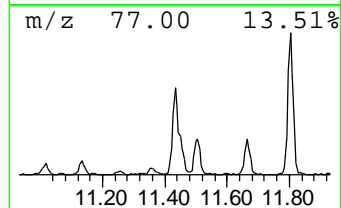
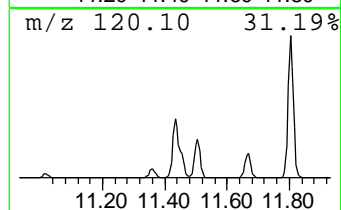
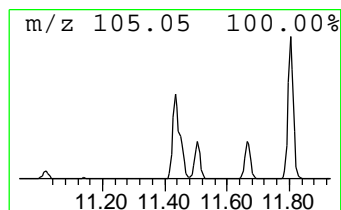
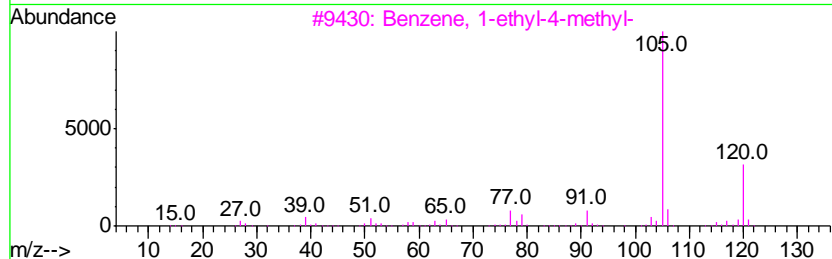
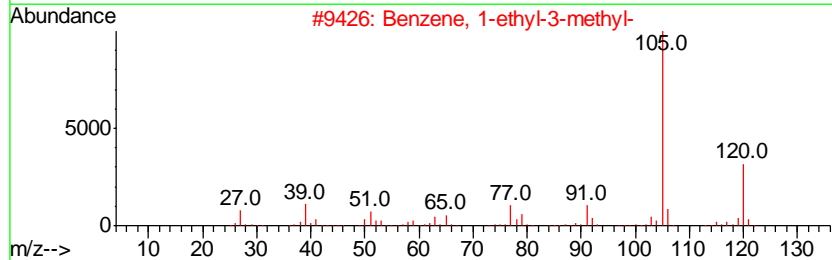
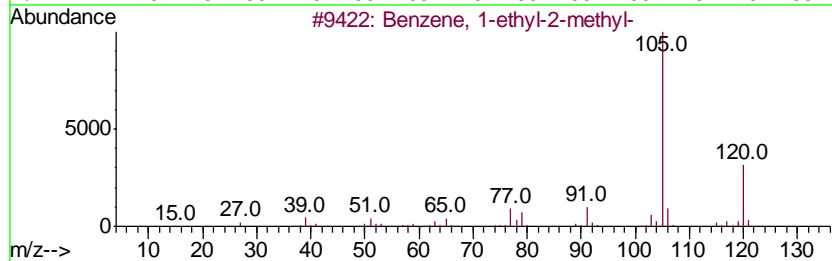
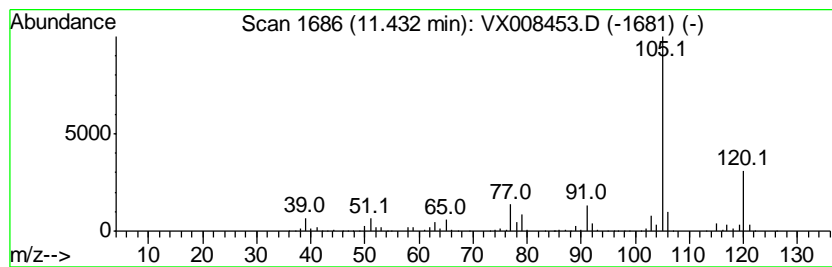
Quant Method : Z:\VOASRV\HPCHEM1\MSVOA_X\METHOD\82X032519W.M
 Quant Title : SW846 8260

TIC Library : C:\DATABASE\NIST11.L
 TIC Integration Parameters: LSCINT.P

 Peak Number 6 Benzene, 1-ethyl-2-methyl- Concentration Rank 3

R.T.	EstConc	Area	Relative to ISTD	R.T.
11.43	11.00 ug/l	191480	1,4-Dichlorobenzene-d4	12.08

Hit#	of	Tentative ID	MW	MolForm	CAS#	Qual
1	5	Benzene, 1-ethyl-2-methyl-	120	C9H12	000611-14-3	95
2		Benzene, 1-ethyl-3-methyl-	120	C9H12	000620-14-4	95
3		Benzene, 1-ethyl-4-methyl-	120	C9H12	000622-96-8	91
4		Mesitylene	120	C9H12	000108-67-8	91
5		Benzene, 1,2,4-trimethyl-	120	C9H12	000095-63-6	91



Data Path : Z:\VOASRV\HPCHEM1\MSVOA_X\DATA\VX032619\
Data File : VX008453.D
Acq On : 26 Mar 2019 13:43
Operator : JC/SP
Sample : K2088-04 200X
Misc : 5.0mL/MSVOA_X/WATER
ALS Vial : 9 Sample Multiplier: 1

Instrument :
MSVOA_X
ClientSampled :
MW-102

Quant Method : Z:\VOASRV\HPCHEM1\MSVOA_X\METHOD\82X032519W.M
Quant Title : SW846 8260

TIC Library : C:\DATABASE\NIST11.L
TIC Integration Parameters: LSCINT.P

TIC Top Hit name	RT	EstConc	Units	Response	--Internal Standard--			
					#	RT	Resp	Conc
Butane	1.40	6.2	ug/l	84218	1	5.66	684871	50.0
Butane, 2-methyl-	1.79	12.0	ug/l	164094	1	5.66	684871	50.0
2-Pentene, (E)-	2.12	5.1	ug/l	70329	1	5.66	684871	50.0
2-Butene, 2-methyl-	2.26	12.2	ug/l	167662	1	5.66	684871	50.0
Cyclopentene	2.81	8.1	ug/l	111111	1	5.66	684871	50.0
Benzene, 1-ethyl-...	11.43	11.0	ug/l	191480	4	12.08	870177	50.0