

Data Path : Z:\VOASRV\HPCHEM1\MSVOA X\DATA\VX032619\
 Data File : VX008462.D
 Acq On : 26 Mar 2019 18:21
 Operator : JC/SP
 Sample : K2088-01
 Misc : 5.0mL/MSVOA X/WATER
 ALS Vial : 18 Sample Multiplier: 1

Instrument :
 MSVOA_X
 ClientSampled :
 MW-104

Integration Parameters: RTEINT.P

Integrator: RTE
 Smoothing : ON Filtering: 5
 Sampling : 1 Min Area: 3 % of largest Peak
 Start Thrs: 0.2 Max Peaks: 100
 Stop Thrs : 0 Peak Location: TOP

If leading or trailing edge < 100 prefer < Baseline drop else tangent >
 Peak separation: 5

Method : Z:\VOASRV\HPCHEM1\MSVOA_X\METHOD\82X032519W.M
 Title : SW846 8260

Signal : TIC

peak #	R.T. min	first scan	max scan	last scan	PK TY	peak height	corr. area	corr. % max.	% of total
1	1.605	66	74	79	rBV9	7281	19253	1.41%	0.265%
2	2.440	206	211	220	rBV	16799	27144	1.99%	0.373%
3	2.604	234	238	248	rVB	7765	16086	1.18%	0.221%
4	5.500	702	713	725	rBV2	142327	411828	30.14%	5.658%
5	5.659	727	739	751	rBV	254576	722310	52.86%	9.924%
6	6.061	794	805	815	rBV	181400	479593	35.10%	6.589%
7	6.348	844	852	860	rVB2	7936	21931	1.60%	0.301%
8	6.860	925	936	949	rBV	411647	987533	72.27%	13.568%
9	8.055	1126	1132	1139	rVB3	7577	16510	1.21%	0.227%
10	8.177	1144	1152	1157	rBV3	7150	15133	1.11%	0.208%
11	8.640	1221	1228	1233	rBV2	13460	23050	1.69%	0.317%
12	8.713	1233	1240	1247	rVV	892750	1366430	100.00%	18.774%
13	8.780	1247	1251	1262	rVB	45400	77652	5.68%	1.067%
14	10.109	1463	1469	1483	rVB	806067	1110988	81.31%	15.264%
15	10.353	1504	1509	1517	rBV2	26767	40562	2.97%	0.557%
16	10.695	1561	1565	1571	rBV	14278	20155	1.48%	0.277%
17	11.133	1631	1637	1651	rBV	663944	839379	61.43%	11.532%
18	11.804	1743	1747	1753	rVB2	12700	17012	1.24%	0.234%
19	12.078	1786	1792	1798	rBV	740806	964041	70.55%	13.245%
20	12.139	1798	1802	1807	rVB	11666	15279	1.12%	0.210%
21	13.346	1996	2000	2006	rVB3	12685	19512	1.43%	0.268%
22	13.639	2044	2048	2051	rBV3	9358	14171	1.04%	0.195%
23	13.718	2058	2061	2067	rVB4	9732	17426	1.28%	0.239%
24	14.267	2146	2151	2159	rBV3	11498	20975	1.54%	0.288%
25	14.426	2173	2177	2182	rBV2	11170	14533	1.06%	0.200%

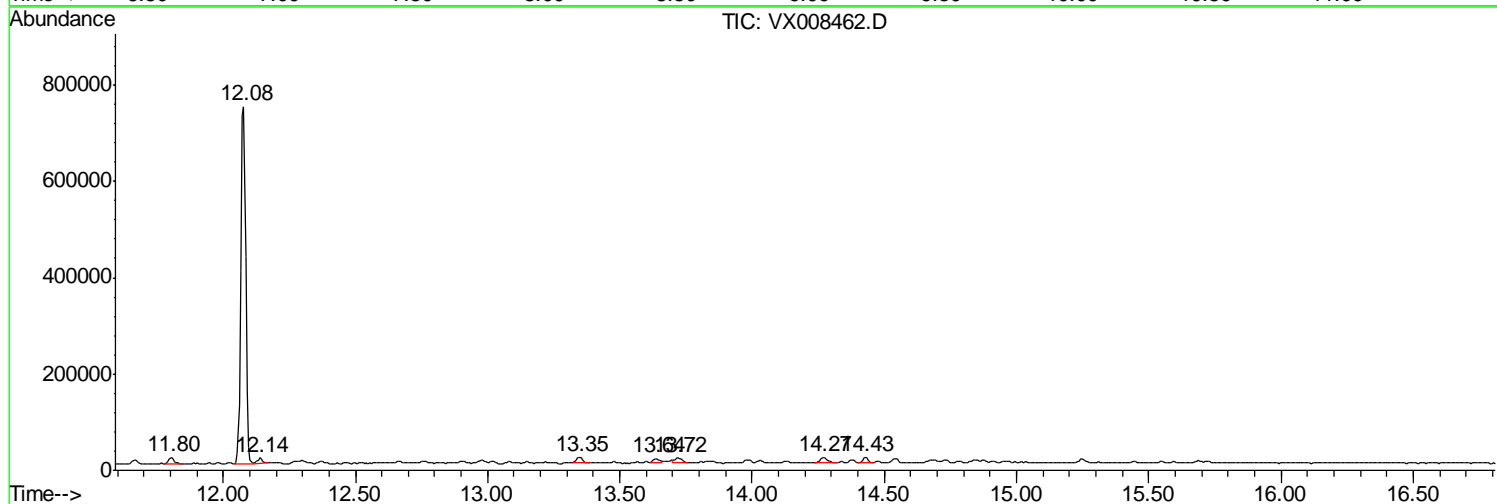
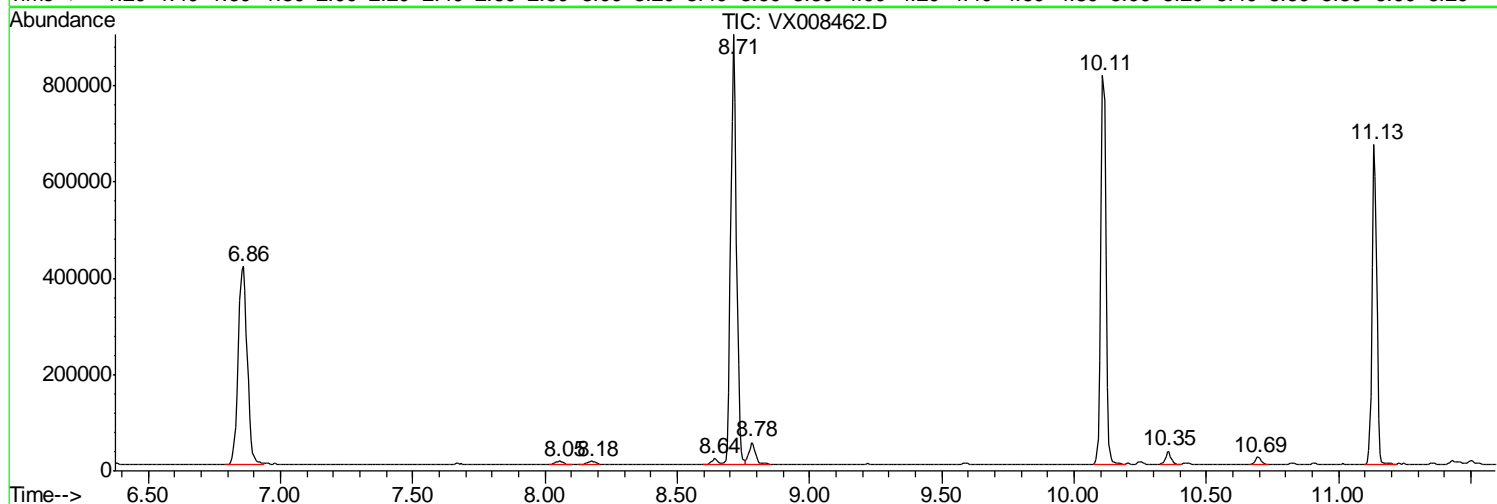
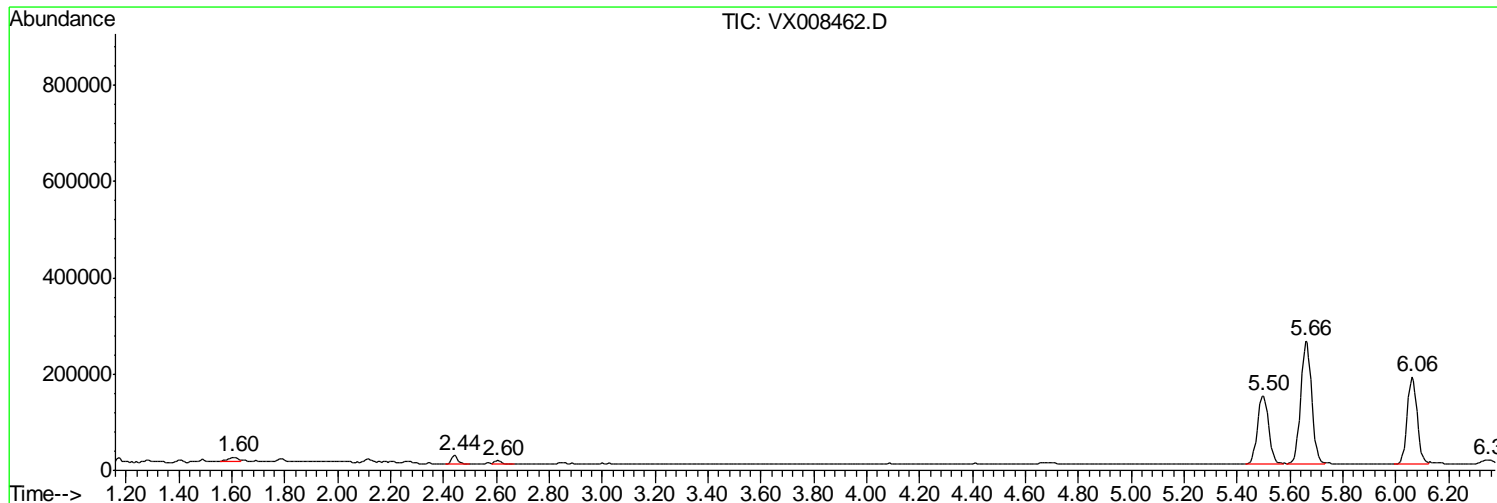
Sum of corrected areas: 7278486

Data Path : Z:\VOASRV\HPCHEM1\MSVOA X\DATA\VX032619\
 Data File : VX008462.D
 Acq On : 26 Mar 2019 18:21
 Operator : JC/SP
 Sample : K2088-01
 Misc : 5.0mL/MSVOA X/WATER
 ALS Vial : 18 Sample Multiplier: 1

Instrument :
 MSVOA_X
 ClientSampled :
 MW-104

Quant Method : Z:\VOASRV\HPCHEM1\MSVOA_X\METHOD\82X032519W.M
 Quant Title : SW846 8260

TIC Library : C:\DATABASE\NIST11.L
 TIC Integration Parameters: LSCINT.P



Data Path : Z:\VOASRV\HPCHEM1\MSVOA_X\DATA\VX032619\
Data File : VX008462.D
Acq On : 26 Mar 2019 18:21
Operator : JC/SP
Sample : K2088-01
Misc : 5.0mL/MSVOA_X/WATER
ALS Vial : 18 Sample Multiplier: 1

Instrument :
MSVOA_X
ClientSampleId :
MW-104

Quant Method : Z:\VOASRV\HPCHEM1\MSVOA_X\METHOD\82X032519W.M
Quant Title : SW846 8260

TIC Library : C:\DATABASE\NIST11.L
TIC Integration Parameters: LSCINT.P

No Library Search Compounds Detected

Data Path : Z:\VOASRV\HPCHEM1\MSVOA_X\DATA\VX032619\
Data File : VX008462.D
Acq On : 26 Mar 2019 18:21
Operator : JC/SP
Sample : K2088-01
Misc : 5.0mL/MSVOA_X/WATER
ALS Vial : 18 Sample Multiplier: 1

Instrument :
MSVOA_X
ClientSampleId :
MW-104

Quant Method : Z:\VOASRV\HPCHEM1\MSVOA_X\METHOD\82X032519W.M
Quant Title : SW846 8260

TIC Library : C:\DATABASE\NIST11.L
TIC Integration Parameters: LSCINT.P

TIC Top Hit name	RT	EstConc	Units	Response	--Internal Standard--			
					#	RT	Resp	Conc
