

Data Path : Z:\voasrv\HPCHEM1\MSVOA_X\Data\VX032625\
 Data File : VX045458.D
 Acq On : 26 Mar 2025 10:31
 Operator : JC/MD
 Sample : VX0326MBL01
 Misc : 5.00g/10mL/100uL/5.00mL/MSVOA_X/MEOH
 ALS Vial : 3 Sample Multiplier: 1

Instrument :
 MSVOA_X
 ClientSampleId :
 VX0326MBL01

Integration Parameters: RTEINT.P

Integrator: RTE
 Smoothing : ON Filtering: 5
 Sampling : 1 Min Area: 3 % of largest Peak
 Start Thrs: 0.2 Max Peaks: 100
 Stop Thrs : 0 Peak Location: TOP

If leading or trailing edge < 100 prefer < Baseline drop else tangent >
 Peak separation: 5

Method : Z:\voasrv\HPCHEM1\MSVOA_X\Method\82X022825W.M
 Title : SW846 8260

Signal : TIC: VX045458.D\data.ms

peak #	R.T. min	first scan	max scan	last scan	PK TY	peak height	corr. area	corr. % max.	% of total
1	1.563	69	78	80	rBV5	4112	9731	2.34%	0.451%
2	1.611	84	86	92	rVB4	6407	9491	2.29%	0.440%
3	2.550	236	240	248	rVB	4111	6665	1.61%	0.309%
4	5.379	694	704	719	rBV	49983	148978	35.88%	6.911%
5	5.544	719	731	746	rVV	72315	201758	48.59%	9.359%
6	5.946	788	797	809	rBV2	57924	153670	37.01%	7.128%
7	6.757	921	930	946	rBV	124380	300022	72.26%	13.917%
8	8.647	1233	1240	1251	rBV	257686	415223	100.00%	19.261%
9	10.049	1465	1470	1488	rBV	263780	369916	89.09%	17.159%
10	11.079	1634	1639	1657	rBV	199168	257216	61.95%	11.931%
11	12.018	1788	1793	1804	rBV	222193	283118	68.18%	13.133%

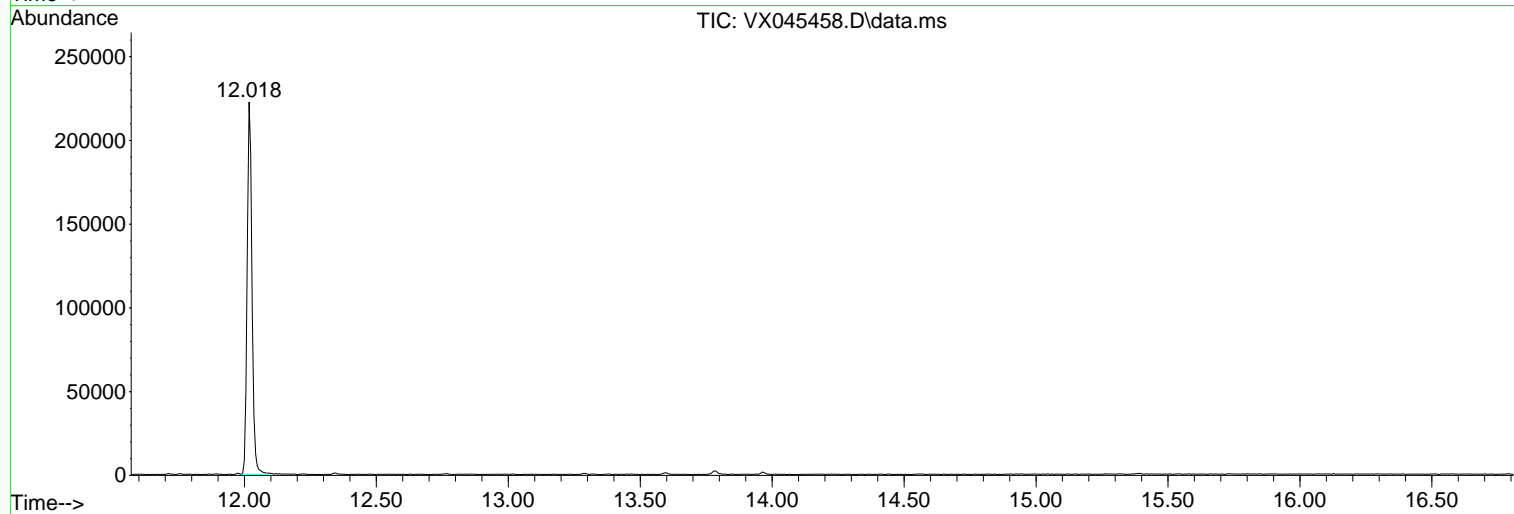
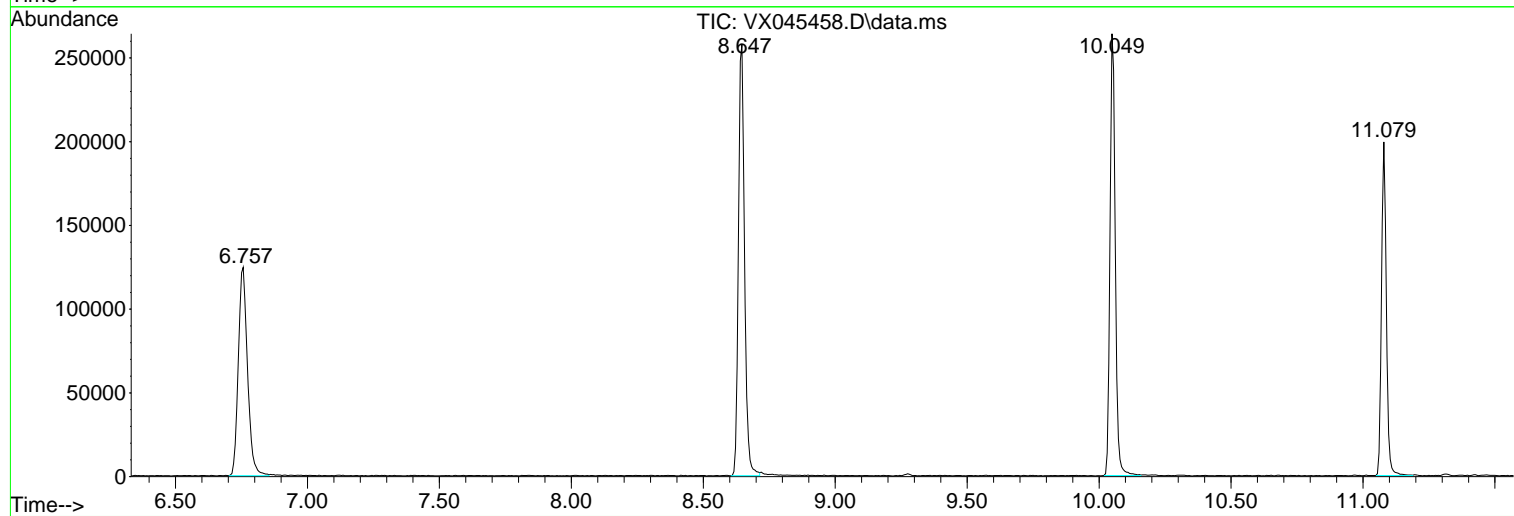
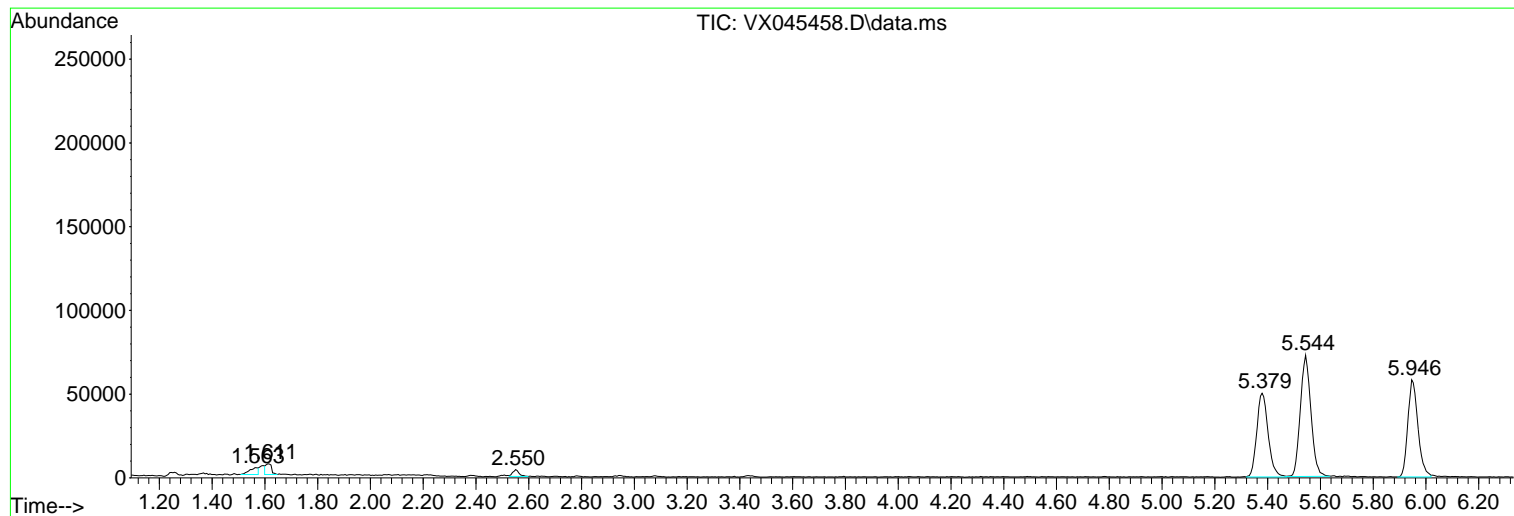
Sum of corrected areas: 2155788

Data Path : Z:\voasrv\HPCHEM1\MSVOA_X\Data\VX032625\
Data File : VX045458.D
Acq On : 26 Mar 2025 10:31
Operator : JC/MD
Sample : VX0326MBL01
Misc : 5.00g/10mL/100uL/5.00mL/MSVOA_X/MEOH
ALS Vial : 3 Sample Multiplier: 1

Instrument :
MSVOA_X
ClientSampleId :
VX0326MBL01

Quant Method : Z:\voasrv\HPCHEM1\MSVOA_X\Method\82X022825W.M
Quant Title : SW846 8260

TIC Library : C:\Database\NIST20.L
TIC Integration Parameters: LSCINT.P



Library Search Compound Report

Data Path : Z:\voasrv\HPCHEM1\MSVOA_X\Data\VX032625\
Data File : VX045458.D
Acq On : 26 Mar 2025 10:31
Operator : JC/MD
Sample : VX0326MBL01
Misc : 5.00g/10mL/100uL/5.00mL/MSVOA_X/MEOH
ALS Vial : 3 Sample Multiplier: 1

Instrument :
MSVOA_X
ClientSampleId :
VX0326MBL01

Quant Method : Z:\voasrv\HPCHEM1\MSVOA_X\Method\82X022825W.M
Quant Title : SW846 8260

TIC Library : C:\Database\NIST20.L
TIC Integration Parameters: LSCINT.P

No Library Search Compounds Detected

Data Path : Z:\voasrv\HPCHEM1\MSVOA_X\Data\VX032625\
Data File : VX045458.D
Acq On : 26 Mar 2025 10:31
Operator : JC/MD
Sample : VX0326MBL01
Misc : 5.00g/10mL/100uL/5.00mL/MSVOA_X/MEOH
ALS Vial : 3 Sample Multiplier: 1

Instrument :
MSVOA_X
ClientSampleId :
VX0326MBL01

Quant Method : Z:\voasrv\HPCHEM1\MSVOA_X\Method\82X022825W.M
Quant Title : SW846 8260

TIC Library : C:\Database\NIST20.L
TIC Integration Parameters: LSCINT.P

TIC Top Hit name	RT	EstConc	Units	Response	--Internal Standard--		
					#	RT	Resp Conc
