

Data Path : Z:\VOASRV\HPCHEM1\MSVOA X\DATA\VX032719\  
 Data File : VX008485.D  
 Acq On : 27 Mar 2019 16:15  
 Operator : JC/SP  
 Sample : K2099-04  
 Misc : 5.0mL/MSVOA X/WATER  
 ALS Vial : 17 Sample Multiplier: 1

Instrument :  
 MSVOA\_X  
 ClientSampled :  
 MH-C05-SETTLED-1H-B

Integration Parameters: RTEINT3.P

Integrator: RTE  
 Smoothing : OFF  
 Sampling : 1  
 Start Thrs: 0.2  
 Stop Thrs : 0

Filtering: 5  
 Min Area: 0 % of largest Peak  
 Max Peaks: 100  
 Peak Location: TOP

If leading or trailing edge < 100 prefer < Baseline drop else tangent >  
 Peak separation: 5

Method : Z:\VOASRV\HPCHEM1\MSVOA X\METHOD\624X032719W.M  
 Title : METHOD 624 VOLATILE ORGANIC ANALYSIS

Signal : TIC

peak #	R.T. min	first scan	max scan	last scan	PK TY	peak height	corr. area	corr. % max.	% of total
1	1.611	66	75	78	rBV8	7049	14586	2.08%	0.434%
2	2.239	176	178	190	rVB4	2700	8305	1.18%	0.247%
3	2.440	206	211	213	rBV	8921	14252	2.03%	0.424%
4	2.483	213	218	229	rVV	41446	82426	11.73%	2.455%
5	2.605	231	238	244	rVB	11898	22016	3.13%	0.656%
6	2.855	274	279	286	rBV5	4182	8813	1.25%	0.262%
7	3.019	297	306	312	rBV6	2677	7313	1.04%	0.218%
8	5.019	620	634	646	rBV	89499	277831	39.54%	8.275%
9	6.061	795	805	818	rBV	100159	259475	36.92%	7.728%
10	6.860	926	936	951	rBV	210910	509696	72.53%	15.180%
11	8.713	1234	1240	1248	rBV	451617	702744	100.00%	20.930%
12	8.780	1248	1251	1258	rVB	6677	12181	1.73%	0.363%
13	10.109	1463	1469	1481	rBV	418853	573277	81.58%	17.074%
14	10.359	1504	1510	1517	rBV	12440	20149	2.87%	0.600%
15	10.701	1561	1566	1573	rVB3	6713	13535	1.93%	0.403%
16	11.134	1631	1637	1644	rBV	327536	427088	60.77%	12.720%
17	11.225	1648	1652	1659	rVB	13793	20923	2.98%	0.623%
18	11.810	1742	1748	1757	rVB8	3724	8831	1.26%	0.263%
19	11.938	1761	1769	1774	rVV3	16448	26175	3.72%	0.780%
20	12.024	1774	1783	1786	rVV5	12886	22788	3.24%	0.679%
21	12.060	1786	1789	1797	rVV	36463	45939	6.54%	1.368%
22	12.158	1799	1805	1809	rVB6	6399	9908	1.41%	0.295%
23	12.292	1820	1827	1833	rBV6	6660	14344	2.04%	0.427%
24	12.579	1869	1874	1878	rBV	19950	25076	3.57%	0.747%
25	12.908	1924	1928	1932	rVB4	6718	8966	1.28%	0.267%
26	12.963	1932	1937	1943	rBV	26489	37615	5.35%	1.120%
27	13.225	1972	1980	1988	rBV	39427	60260	8.57%	1.795%
28	13.566	2032	2036	2041	rVV	13327	21333	3.04%	0.635%
29	13.633	2041	2047	2056	rVV4	15504	30371	4.32%	0.905%
30	13.719	2056	2061	2067	rVV	11135	18824	2.68%	0.561%
31	13.786	2067	2072	2077	rVV	38987	52584	7.48%	1.566%

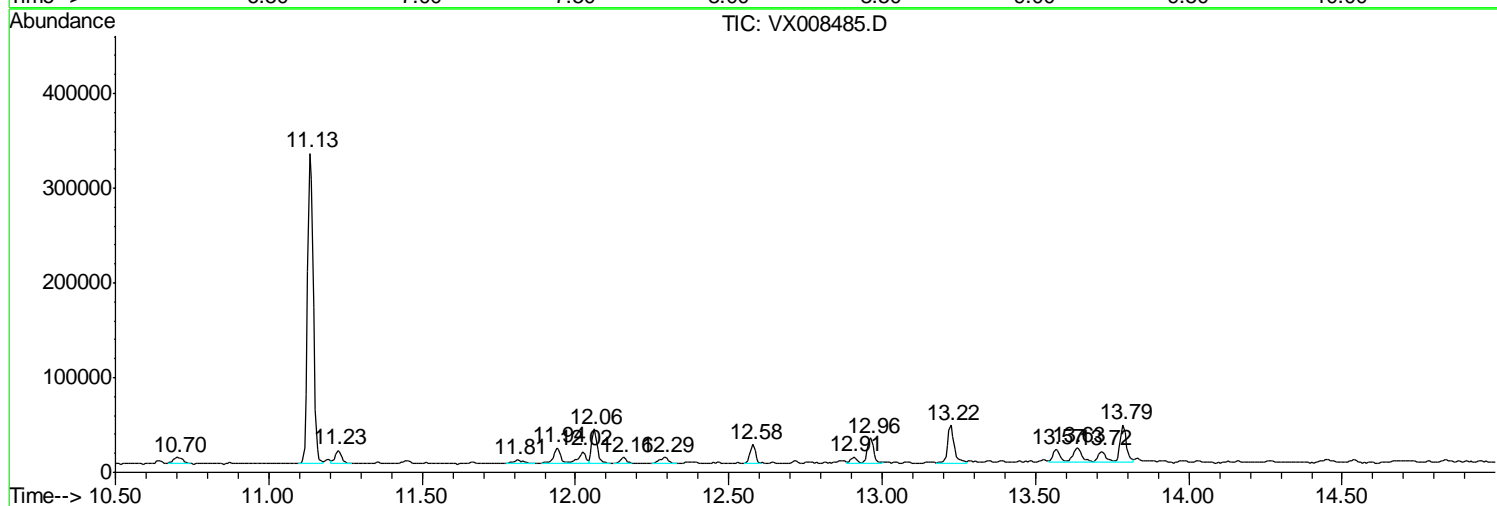
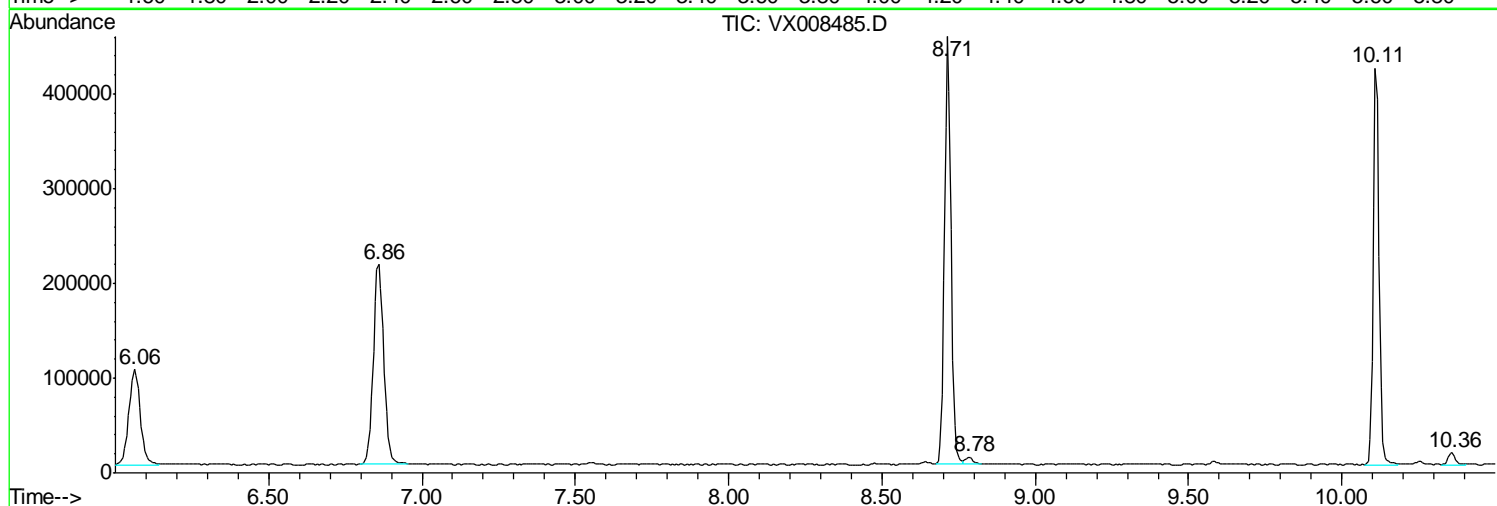
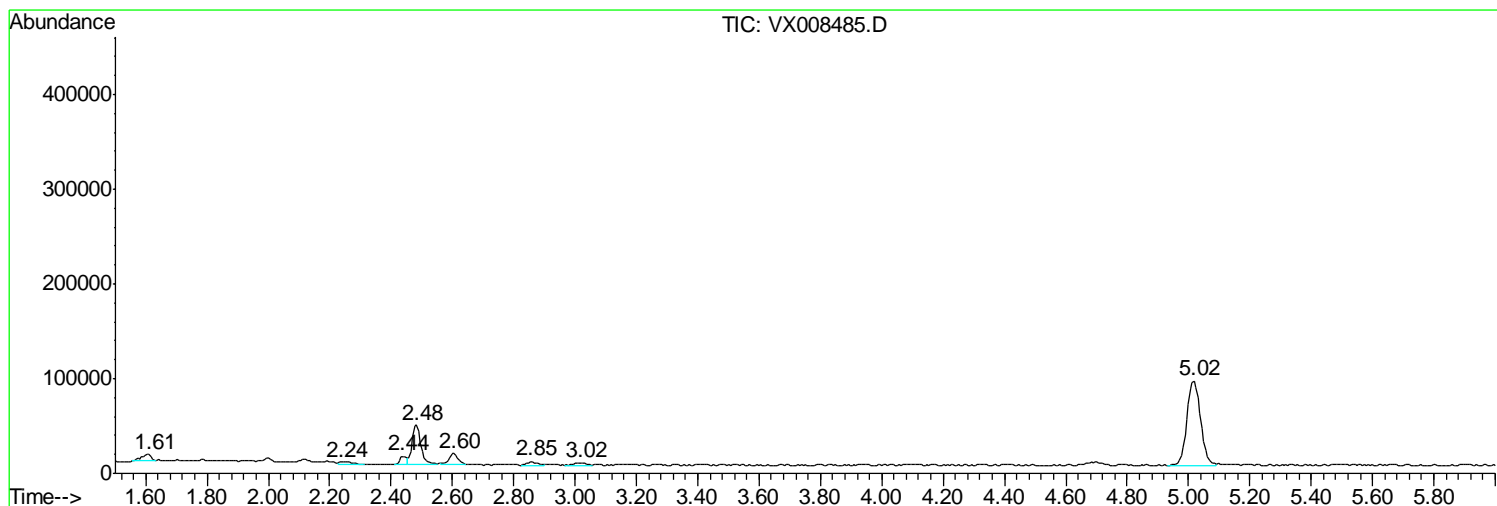
Sum of corrected areas: 3357624

Data Path : Z:\VOASRV\HPCHEM1\MSVOA X\DATA\VX032719\  
 Data File : VX008485.D  
 Acq On : 27 Mar 2019 16:15  
 Operator : JC/SP  
 Sample : K2099-04  
 Misc : 5.0mL/MSVOA X/WATER  
 ALS Vial : 17 Sample Multiplier: 1

Instrument :  
 MSVOA\_X  
 ClientSampleId :  
 MH-C05-SETTLED-1H-B

Quant Method : Z:\VOASRV\HPCHEM1\MSVOA X\METHOD\624X032719W.M  
 Quant Title : METHOD 624 VOLATILE ORGANIC ANALYSIS

TIC Library : C:\DATABASE\NIST02.L  
 TIC Integration Parameters: LSCINT.P



Data Path : Z:\VOASRV\HPCHEM1\MSVOA X\DATA\VX032719\  
 Data File : VX008485.D  
 Acq On : 27 Mar 2019 16:15  
 Operator : JC/SP  
 Sample : K2099-04  
 Misc : 5.0mL/MSVOA X/WATER  
 ALS Vial : 17 Sample Multiplier: 1

Instrument :  
 MSVOA\_X  
 ClientSampled :  
 MH-C05-SETTLED-1H-B

Quant Method : Z:\VOASRV\HPCHEM1\MSVOA X\METHOD\624X032719W.M  
 Quant Title : METHOD 624 VOLATILE ORGANIC ANALYSIS

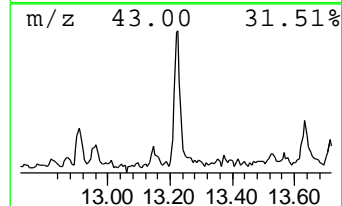
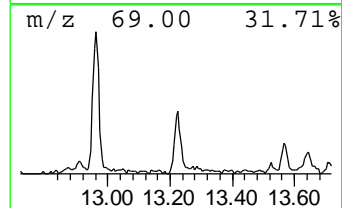
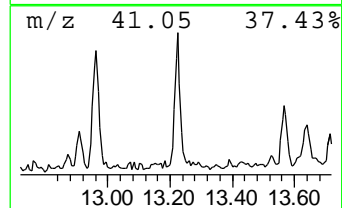
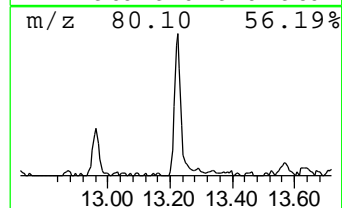
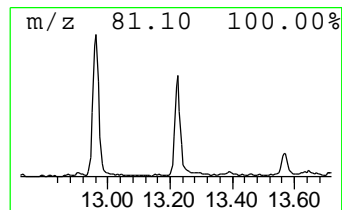
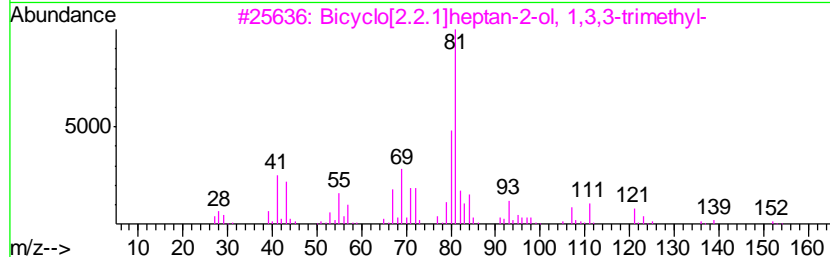
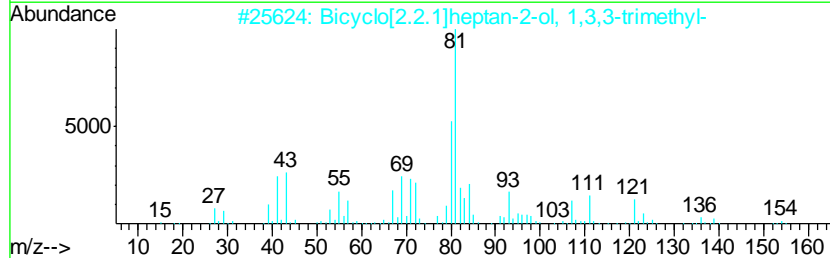
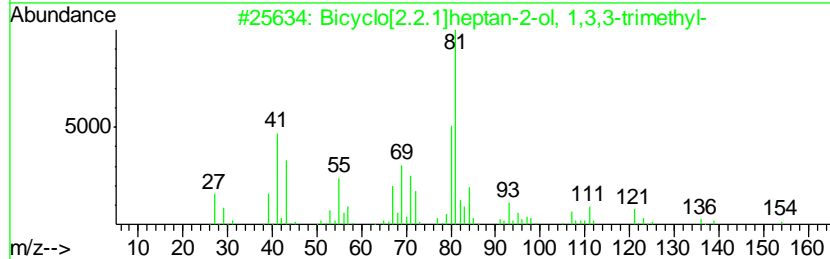
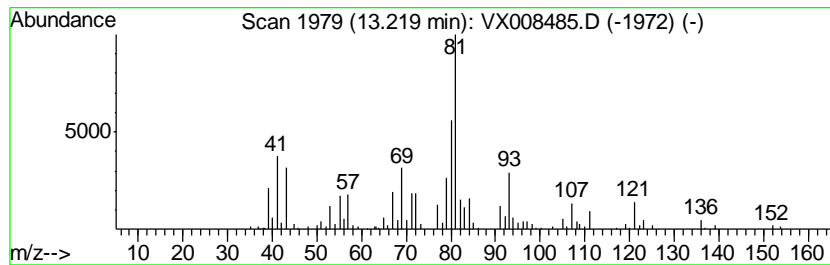
TIC Library : C:\DATABASE\NIST02.L  
 TIC Integration Parameters: LSCINT.P

\*\*\*\*\*  
 Peak Number 2 Bicyclo[2.2.1]heptan-2-ol, ... Concentration Rank 2

R.T.	EstConc	Area	Relative to ISTD	R.T.
13.22	3.15 ug/l	60260	Chlorobenzene-d5	10.11

Hit#	of	Tentative ID	MW	MolForm	CAS#	Qual
1	5	Bicyclo[2.2.1]heptan-2-ol, 1,3,3...	154	C10H18O	001632-73-1	72
2		Bicyclo[2.2.1]heptan-2-ol, 1,3,3...	154	C10H18O	001632-73-1	68
3		Bicyclo[2.2.1]heptan-2-ol, 1,3,3...	154	C10H18O	001632-73-1	64
4		1,3,7-Octatriene, 2,7-dimethyl-	136	C10H16	036638-38-7	47
5		Bi-2-cyclohexen-1-yl	162	C12H18	001541-20-4	47



Data Path : Z:\VOASRV\HPCHEM1\MSVOA\_X\DATA\VX032719\  
Data File : VX008485.D  
Acq On : 27 Mar 2019 16:15  
Operator : JC/SP  
Sample : K2099-04  
Misc : 5.0mL/MSVOA\_X/WATER  
ALS Vial : 17 Sample Multiplier: 1

Instrument :  
MSVOA\_X  
ClientSampleId :  
MH-C05-SETTLED-1H-B

Quant Method : Z:\VOASRV\HPCHEM1\MSVOA\_X\METHOD\624X032719W.M  
Quant Title : METHOD 624 VOLATILE ORGANIC ANALYSIS

TIC Library : C:\DATABASE\NIST02.L  
TIC Integration Parameters: LSCINT.P

TIC Top Hit name	RT	EstConc	Units	Response	--Internal Standard--			
					#	RT	Resp	Conc
Bicyclo[2.2.1]hep...	13.22	3.1	ug/l	60260	3	10.11	573277	30.0