

Data Path : Z:\VOASRV\HPCHEM1\MSVOA X\DATA\VX032819\
 Data File : VX008511.D
 Acq On : 28 Mar 2019 11:58
 Operator : JC/SP
 Sample : K2121-07
 Misc : 5.0mL/MSVOA X/WATER
 ALS Vial : 6 Sample Multiplier: 1

Instrument :
 MSVOA_X
 ClientSampled :
 FIELD-BLANK

Quant Time: Mar 29 01:27:14 2019
 Quant Method : Z:\VOASRV\HPCHEM1\MSVOA_X\METHOD\82X032519W.M
 Quant Title : SW846 8260
 QLast Update : Tue Mar 26 07:57:20 2019
 Response via : Initial Calibration

Internal Standards	R.T.	QIon	Response	Conc	Units	Dev(Min)
1) Pentafluorobenzene	5.66	168	230404	50.00	ug/l	0.00
34) 1,4-Difluorobenzene	6.86	114	385873	50.00	ug/l	0.00
63) Chlorobenzene-d5	10.11	117	336589	50.00	ug/l	0.00
72) 1,4-Dichlorobenzene-d4	12.08	152	142996	50.00	ug/l	0.00

System Monitoring Compounds	R.T.	QIon	Response	Conc	Units	Dev(Min)
33) 1,2-Dichloroethane-d4	6.06	65	160930	46.07	ug/l	0.00
Spiked Amount				50.000		
Recovery						92.14%
35) Dibromofluoromethane	5.50	113	117271	46.61	ug/l	0.00
Spiked Amount				50.000		
Recovery						93.22%
50) Toluene-d8	8.71	98	483453	48.05	ug/l	0.00
Spiked Amount				50.000		
Recovery						96.10%
62) 4-Bromofluorobenzene	11.13	95	168580	45.22	ug/l	0.00
Spiked Amount				50.000		
Recovery						90.44%

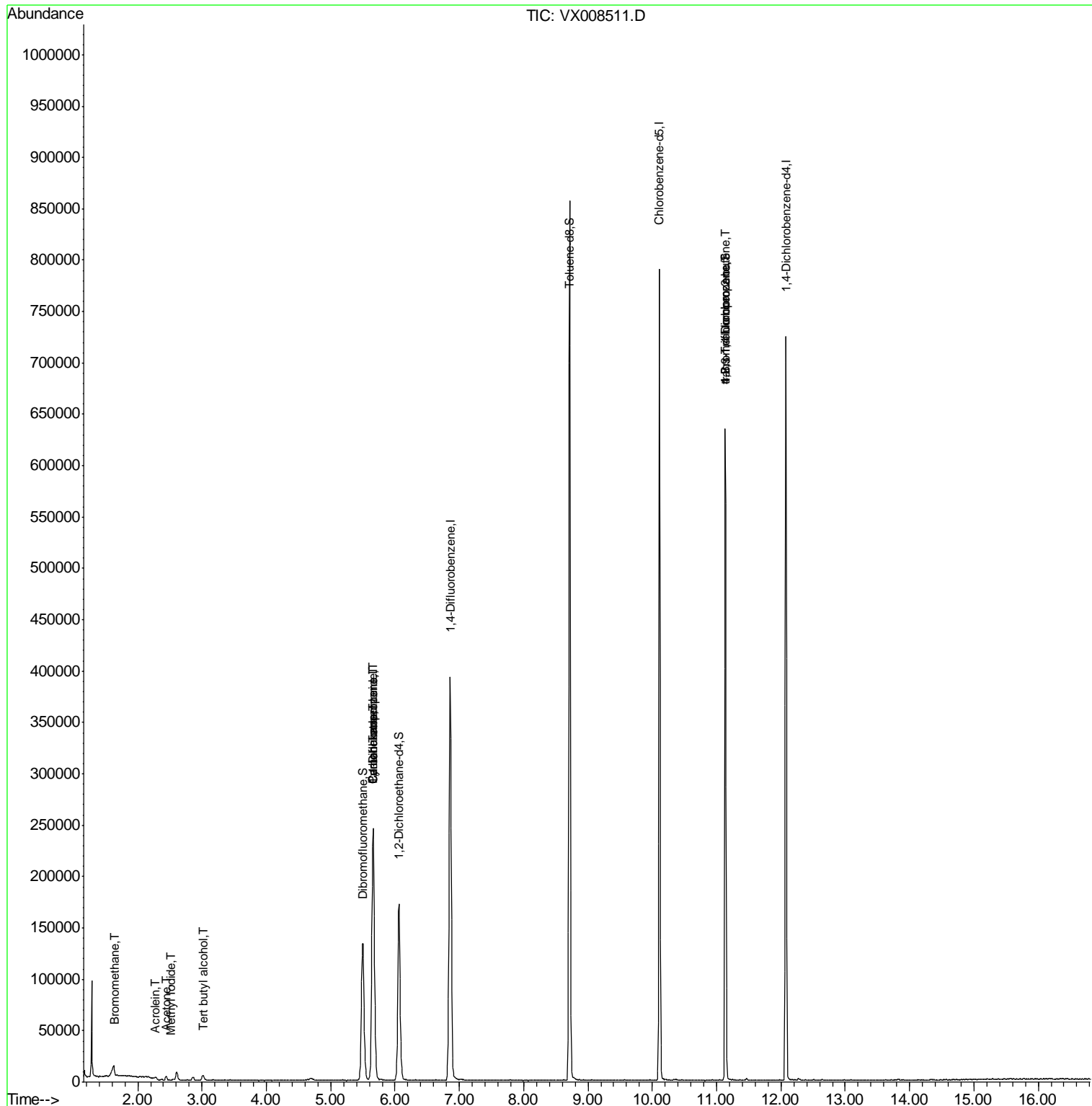
Target Compounds	R.T.	QIon	Response	Conc	Units	Qvalue
3) Chloromethane	1.32	50	425	Below Cal		90
5) Bromomethane	1.64	94	516	2.058	ug/l	90
10) Methyl Iodide	2.51	142	102	4.166	ug/l #	42
11) Tert butyl alcohol	3.01	59	3171	4.097	ug/l #	89
13) Acrolein	2.28	56	193	0.343	ug/l #	49
16) Acetone	2.44	43	3842	2.104	ug/l	99
17) Carbon Disulfide	2.57	76	864	Below Cal	#	93
20) Methylene Chloride	2.85	84	1341	Below Cal	#	73
21) trans-1,2-Dichloroethene	3.30	96	41	Below Cal	#	1
31) Cyclohexane	5.65	56	5535	0.989	ug/l #	1
36) 1,1-Dichloropropene	5.66	75	19658	4.778	ug/l #	50
38) Carbon Tetrachloride	5.66	117	23157	6.744	ug/l #	15
76) 1,2,3-Trichloropropane	11.13	75	85618	20.140	ug/l #	34
81) trans-1,4-Dichloro-2-buten	11.13	75	85618	64.505	ug/l #	9

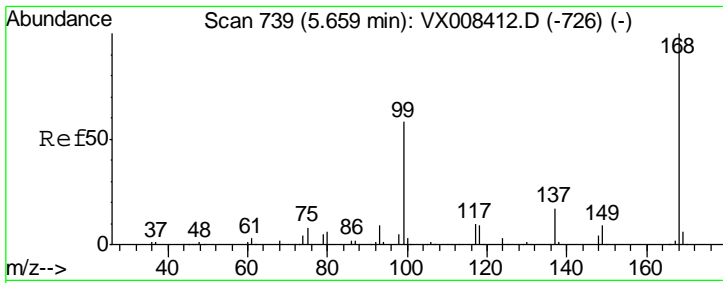
(#) = qualifier out of range (m) = manual integration (+) = signals summed

Data Path : Z:\VOASRV\HPCHEM1\MSVOA X\DATA\VX032819\
 Data File : VX008511.D
 Acq On : 28 Mar 2019 11:58
 Operator : JC/SP
 Sample : K2121-07
 Misc : 5.0mL/MSVOA X/WATER
 ALS Vial : 6 Sample Multiplier: 1

Instrument :
 MSVOA_X
 Client Sampled :
 FIELD-BLANK

Quant Time: Mar 29 01:27:14 2019
 Quant Method : Z:\VOASRV\HPCHEM1\MSVOA_X\METHOD\82X032519W.M
 Quant Title : SW846 8260
 QLast Update : Tue Mar 26 07:57:20 2019
 Response via : Initial Calibration

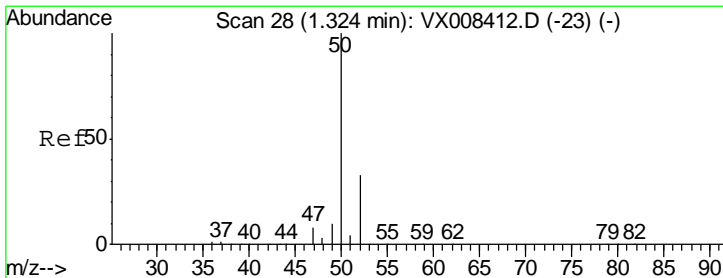
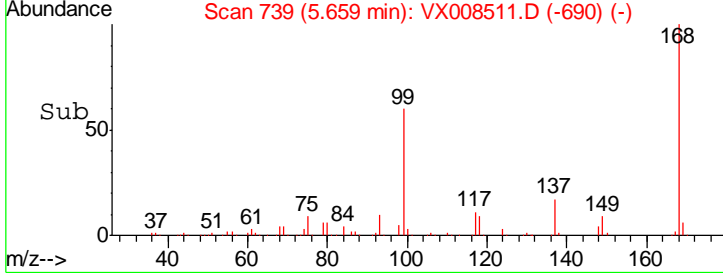
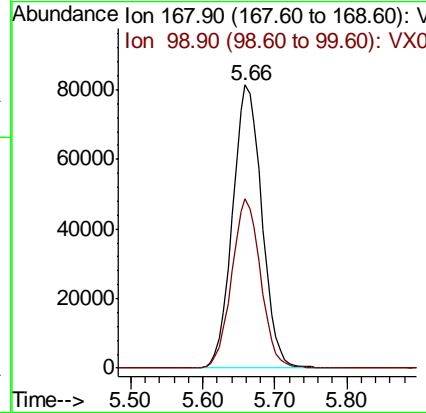
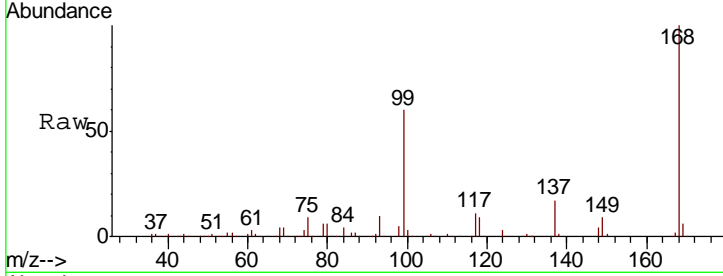




#1
 Pentafluorobenzene
 Concen: 50.000 ug/l
 RT: 5.66 min Scan# 739
 Delta R.T. 0.00 min
 Lab File: VX008511.D
 Acq: 28 Mar 2019 11:58

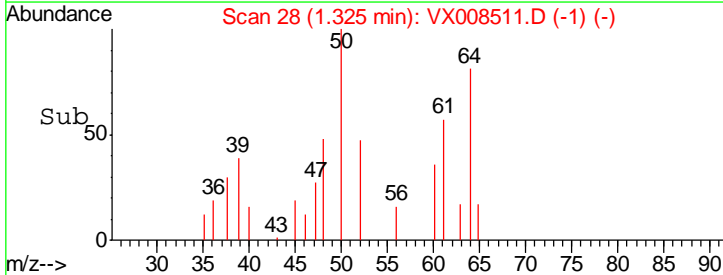
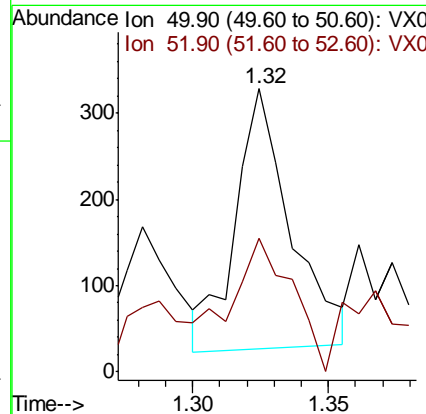
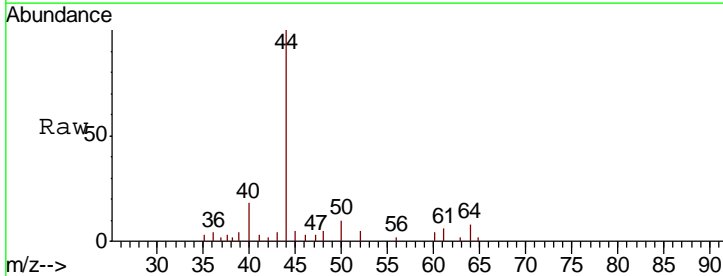
Instrument :
 MSVOA_X
 ClientSampleId :
 FIELD-BLANK

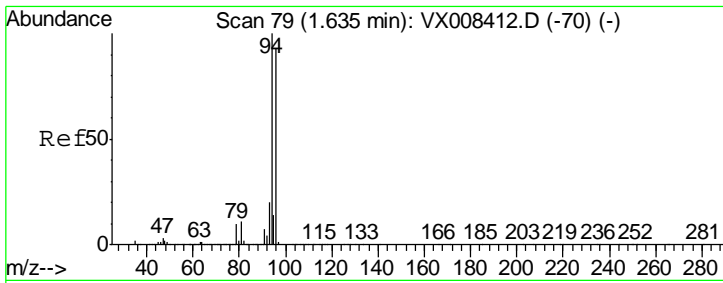
Tot Ion: 168 Resp: 230404
 Ion Ratio Lower Upper
 168 100
 99 59.8 46.0 69.0



#3
 Chloromethane
 Concen: Below Cal
 RT: 1.32 min Scan# 28
 Delta R.T. 0.00 min
 Lab File: VX008511.D
 Acq: 28 Mar 2019 11:58

Tgt Ion: 50 Resp: 425
 Ion Ratio Lower Upper
 50 100
 52 38.1 26.2 39.2

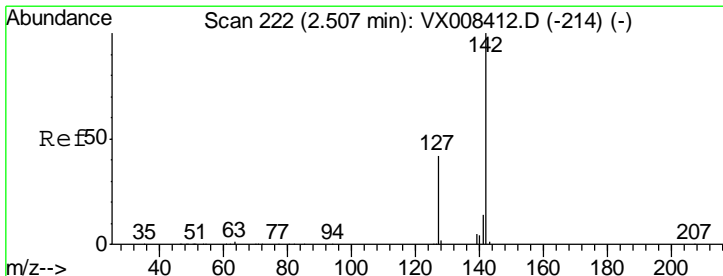
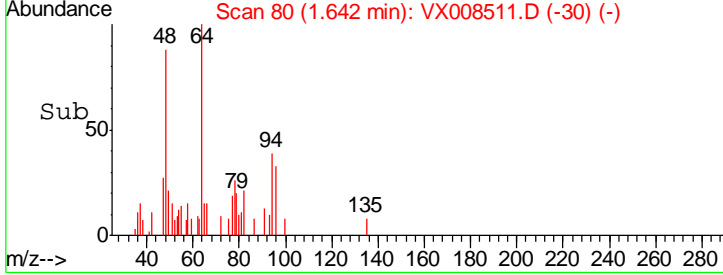
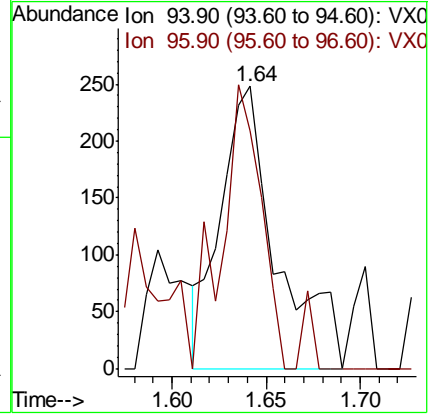
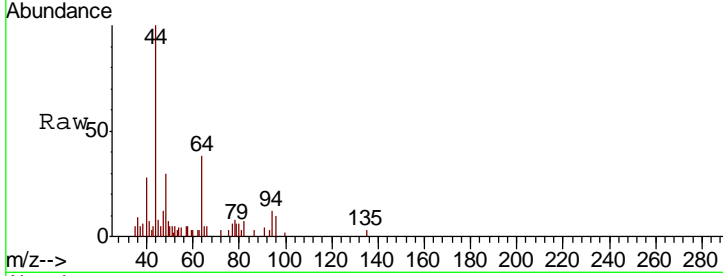




#5
 Bromomethane
 Concen: 2.058 ug/l
 RT: 1.64 min Scan# 80
 Delta R.T. 0.01 min
 Lab File: VX008511.D
 Acq: 28 Mar 2019 11:58

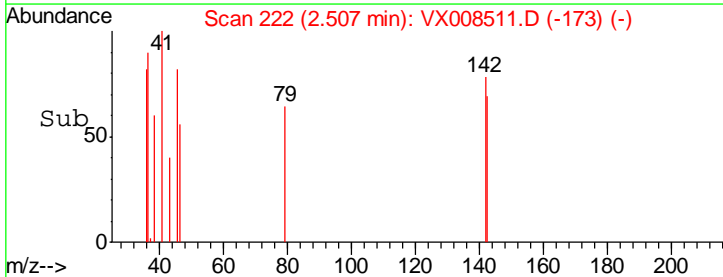
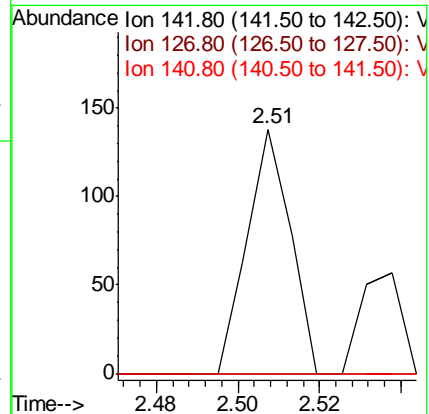
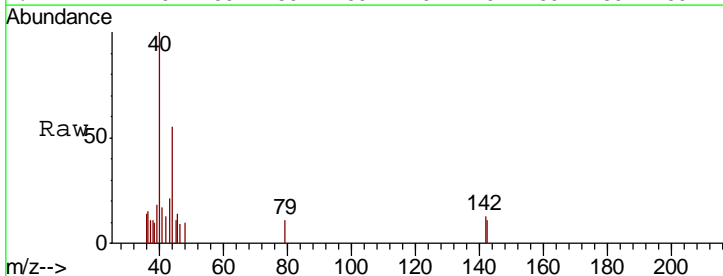
Instrument : MSVOA_X
 ClientSampleId : FIELD-BLANK

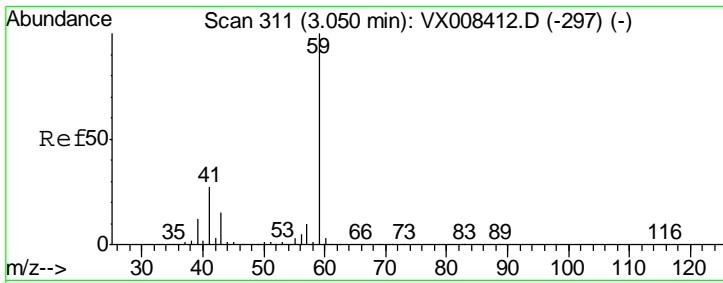
Tgt Ion	Resp	Lower	Upper
94	516		
94	100		
96	84.3	74.8	112.2



#10
 Methyl Iodide
 Concen: 4.166 ug/l
 RT: 2.51 min Scan# 222
 Delta R.T. 0.00 min
 Lab File: VX008511.D
 Acq: 28 Mar 2019 11:58

Tgt Ion	Resp	Lower	Upper
142	102		
142	100		
127	0.0	33.6	50.4#
141	0.0	11.3	16.9#

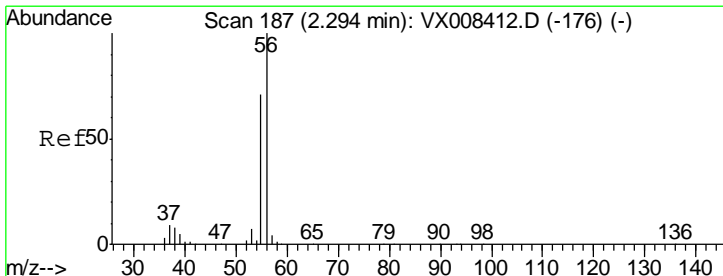
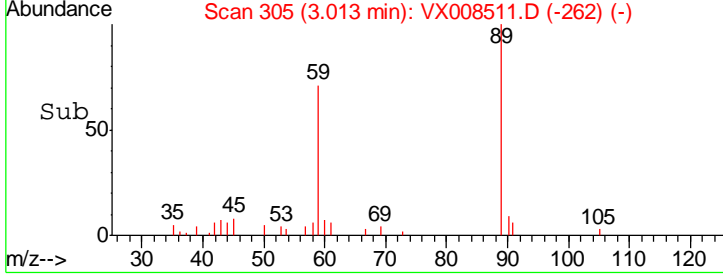
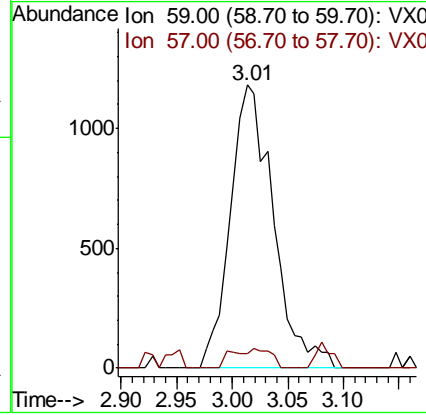
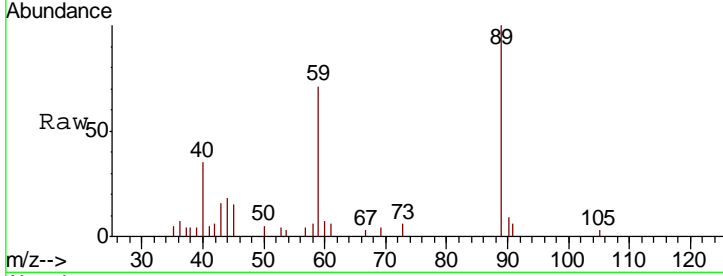




#11
 Tert butyl alcohol
 Concen: 4.097 ug/l
 RT: 3.01 min Scan# 305
 Delta R.T. -0.04 min
 Lab File: VX008511.D
 Acq: 28 Mar 2019 11:58

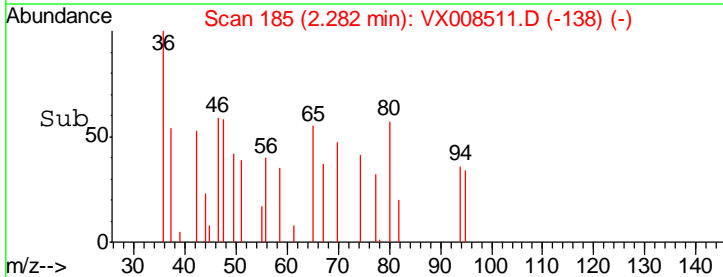
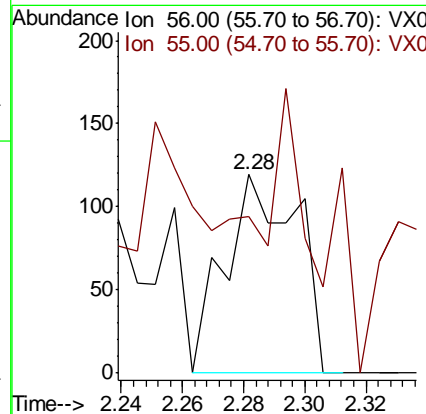
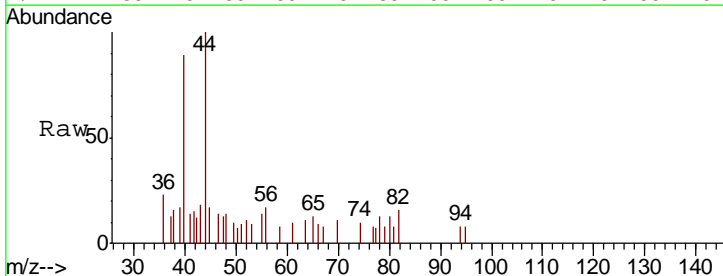
Instrument :
 MSVOA_X
 ClientSampled :
 FIELD-BLANK

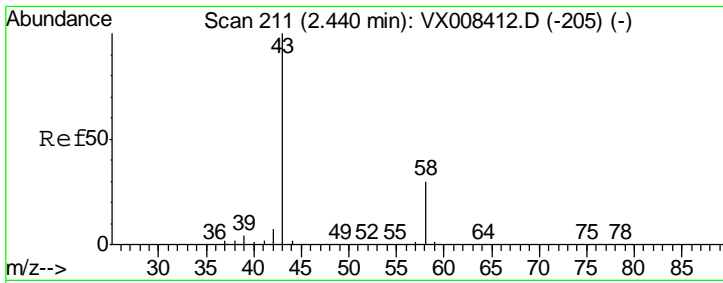
Tgt Ion: 59 Resp: 3171
 Ion Ratio Lower Upper
 59 100
 57 6.3 8.2 12.4#



#13
 Acrolein
 Concen: 0.343 ug/l
 RT: 2.28 min Scan# 185
 Delta R.T. -0.01 min
 Lab File: VX008511.D
 Acq: 28 Mar 2019 11:58

Tgt Ion: 56 Resp: 193
 Ion Ratio Lower Upper
 56 100
 55 113.0 56.5 84.7#

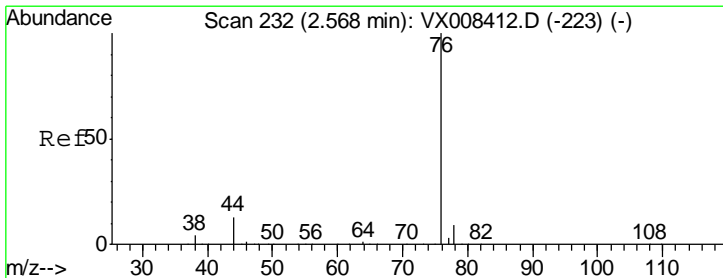
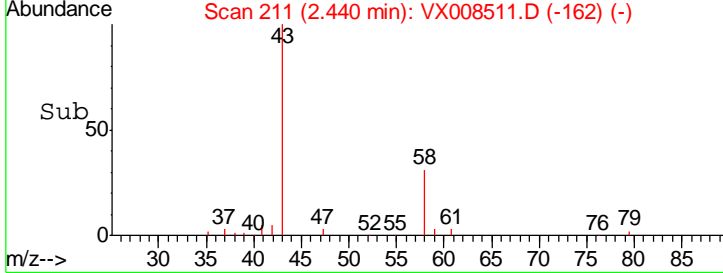
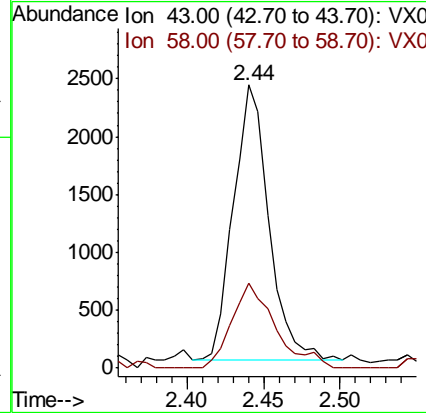
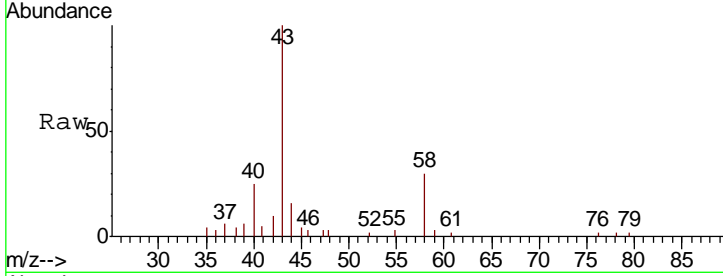




#16
 Acetone
 Concen: 2.104 ug/l
 RT: 2.44 min Scan# 211
 Delta R.T. 0.00 min
 Lab File: VX008511.D
 Acq: 28 Mar 2019 11:58

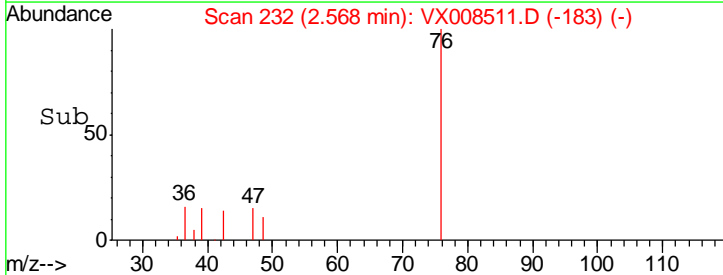
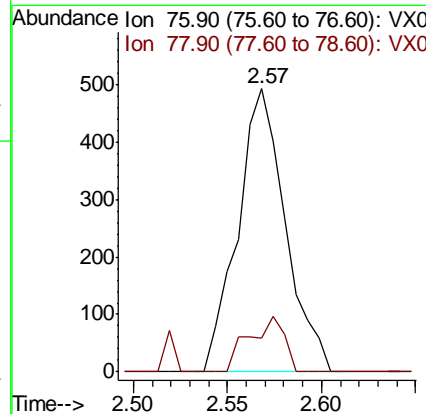
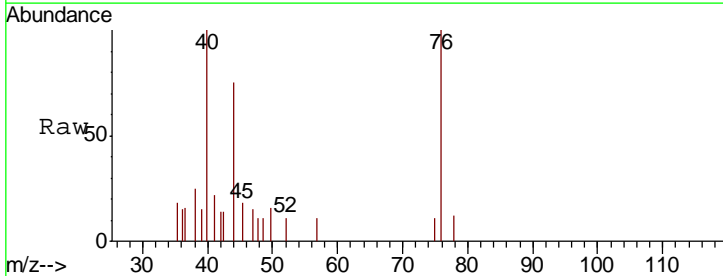
Instrument :
 MSVOA_X
 ClientSampled :
 FIELD-BLANK

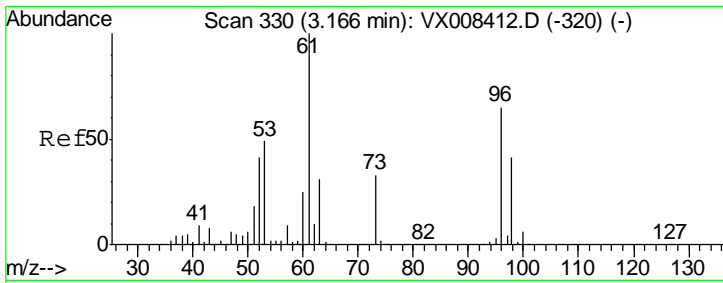
Tgt Ion	Resp	Lower	Upper
43	100		
58	30.9	24.2	36.2



#17
 Carbon Disulfide
 Concen: Below Cal
 RT: 2.57 min Scan# 232
 Delta R.T. 0.00 min
 Lab File: VX008511.D
 Acq: 28 Mar 2019 11:58

Tgt Ion	Resp	Lower	Upper
76	100		
78	11.8	7.4	11.2#

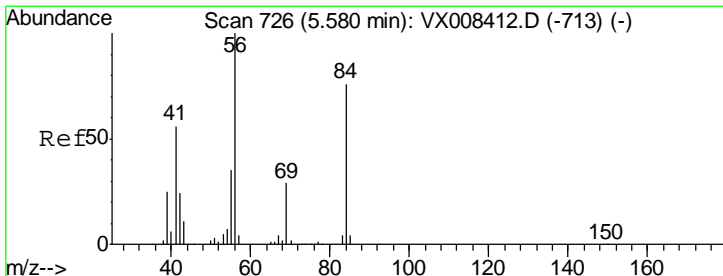
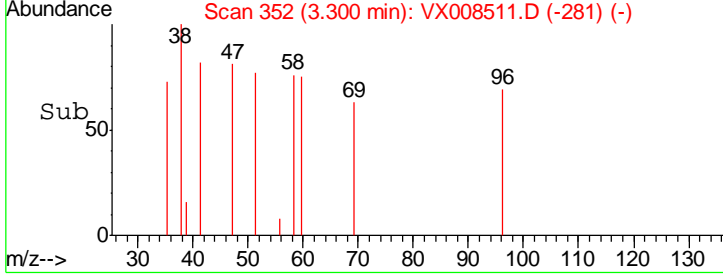
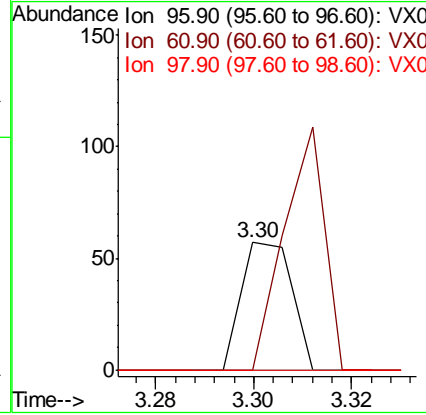
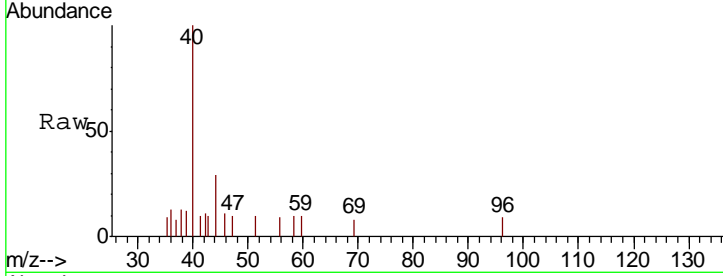




#21
 trans-1,2-Dichloroethene
 Concen: Below Cal
 RT: 3.30 min Scan# 352
 Delta R.T. 0.13 min
 Lab File: VX008511.D
 Acq: 28 Mar 2019 11:58

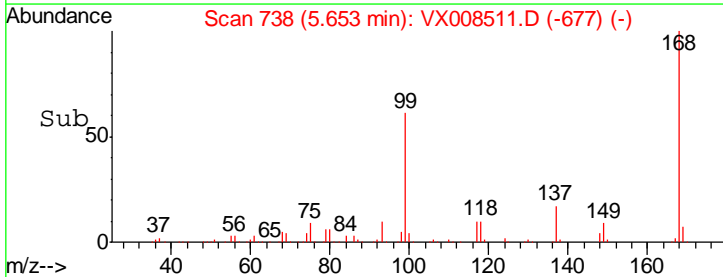
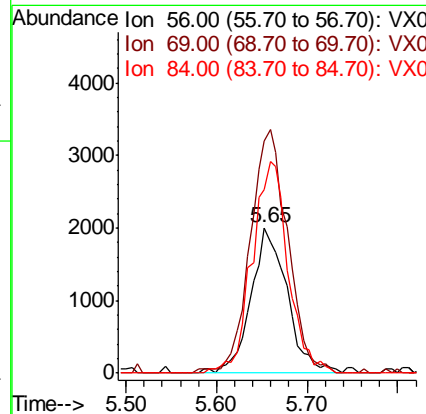
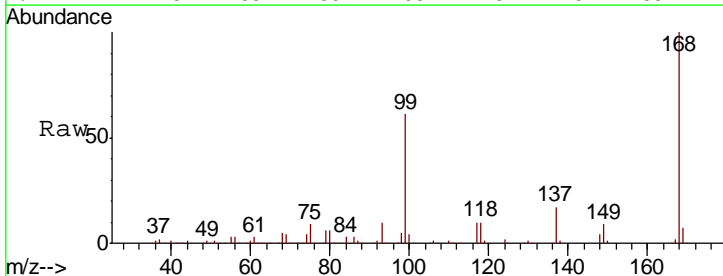
Instrument :
 MSVOA_X
ClientSampled :
 FIELD-BLANK

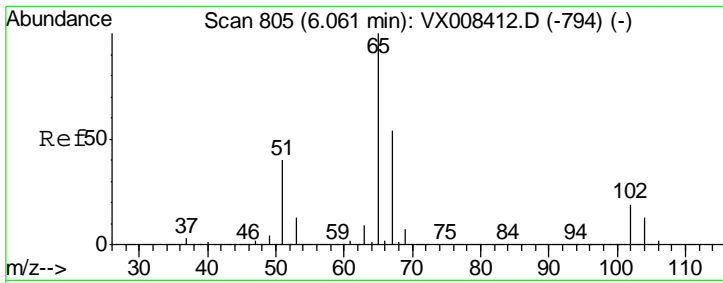
Tgt Ion	Resp	Lower	Upper
96	100		
61	0.0	122.6	184.0#
98	0.0	50.9	76.3#



#31
 Cyclohexane
 Concen: 0.989 ug/l
 RT: 5.65 min Scan# 738
 Delta R.T. 0.07 min
 Lab File: VX008511.D
 Acq: 28 Mar 2019 11:58

Tgt Ion	Resp	Lower	Upper
56	100		
69	159.8	23.2	34.8#
84	126.6	60.7	91.1#

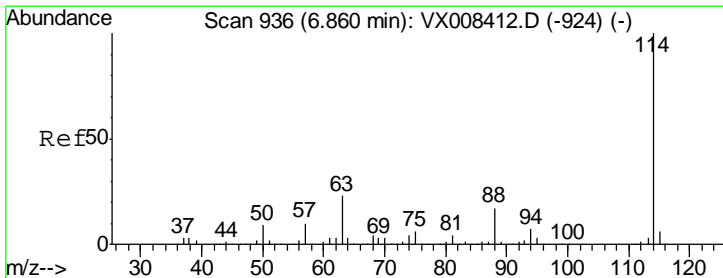
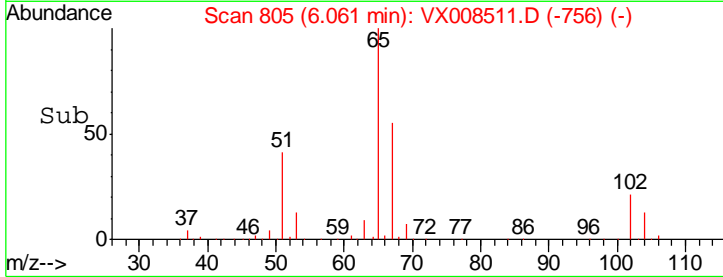
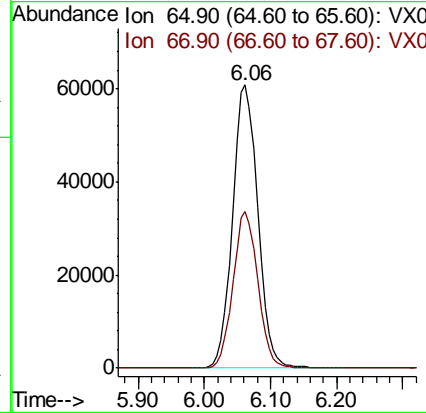
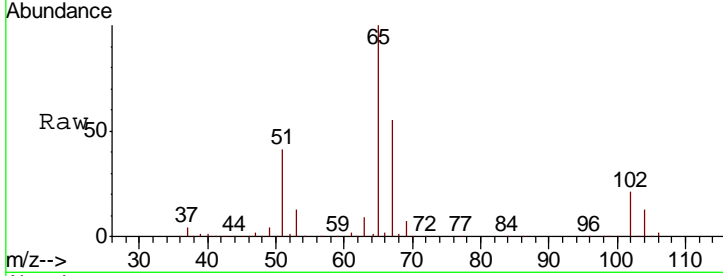




#33
 1,2-Dichloroethane-d4
 Concen: 46.072 ug/l
 RT: 6.06 min Scan# 805
 Delta R.T. 0.00 min
 Lab File: VX008511.D
 Acq: 28 Mar 2019 11:58

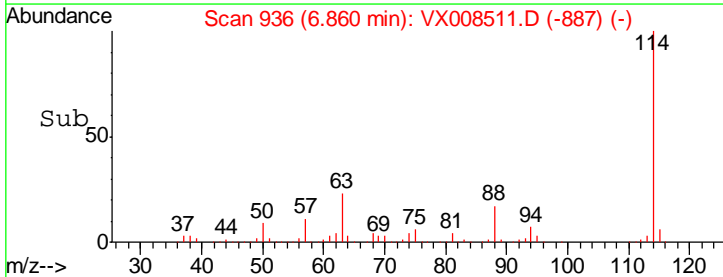
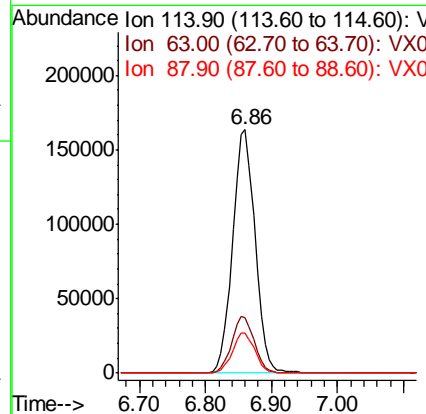
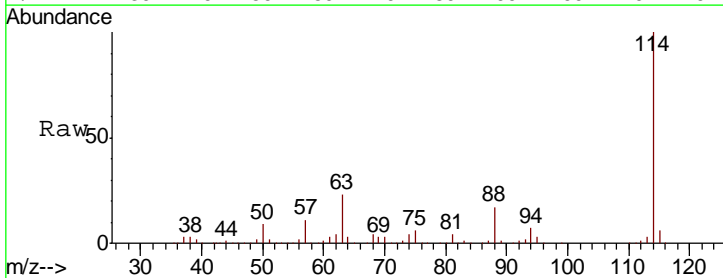
Instrument :
 MSVOA_X
 ClientSampled :
 FIELD-BLANK

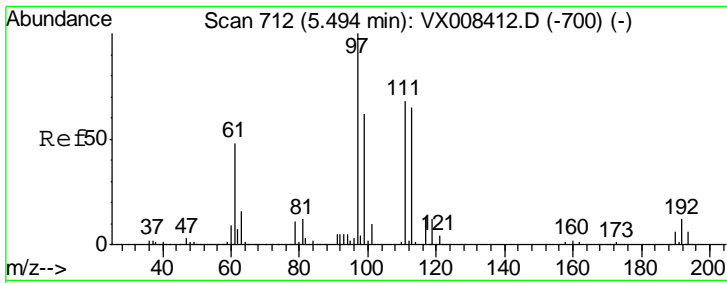
Tgt Ion: 65 Resp: 160930
 Ion Ratio Lower Upper
 65 100
 67 54.4 0.0 109.4



#34
 1,4-Difluorobenzene
 Concen: 50.000 ug/l
 RT: 6.86 min Scan# 936
 Delta R.T. 0.00 min
 Lab File: VX008511.D
 Acq: 28 Mar 2019 11:58

Tgt Ion: 114 Resp: 385873
 Ion Ratio Lower Upper
 114 100
 63 22.9 0.0 46.4
 88 16.7 0.0 33.2

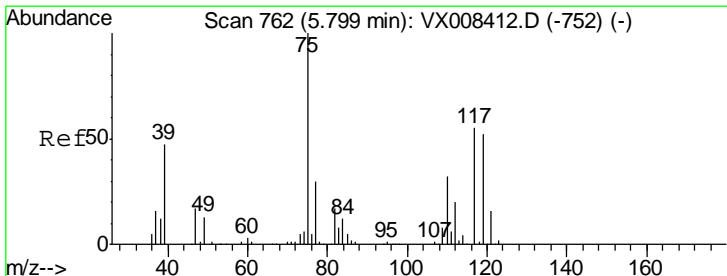
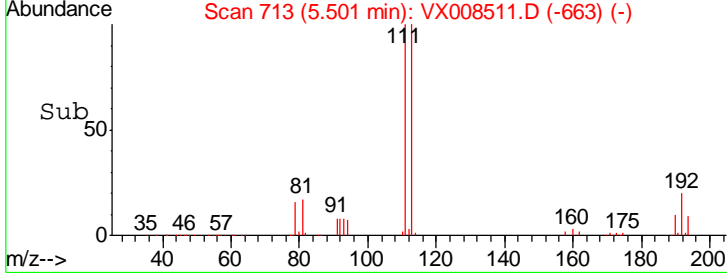
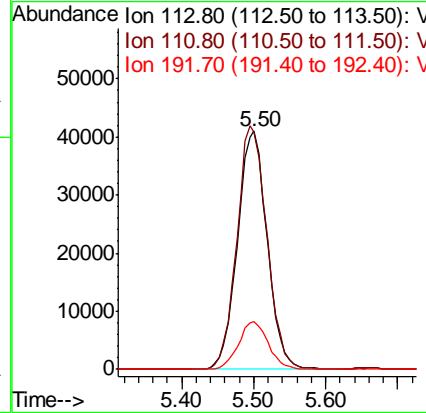
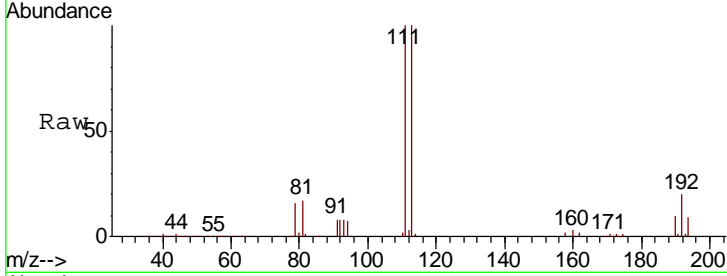




#35
 Dibromofluoromethane
 Concen: 46.609 ug/l
 RT: 5.50 min Scan# 713
 Delta R.T. 0.01 min
 Lab File: VX008511.D
 Acq: 28 Mar 2019 11:58

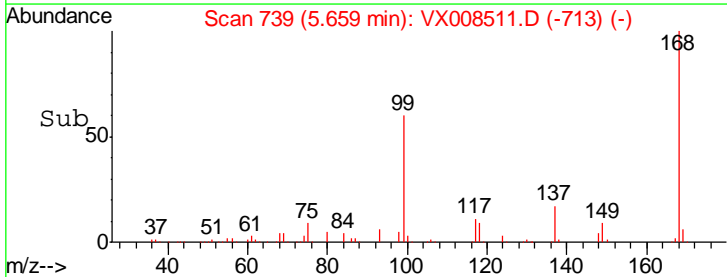
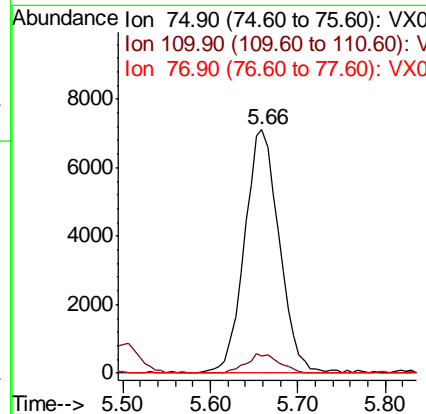
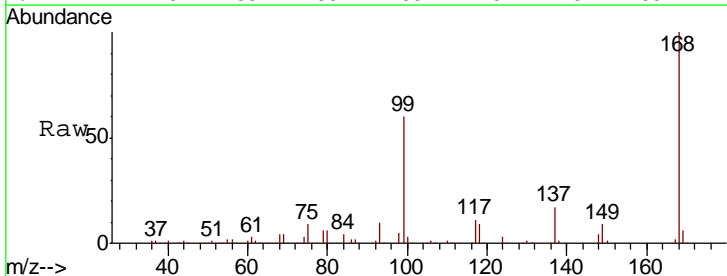
Instrument :
 MSVOA_X
 ClientSampled :
 FIELD-BLANK

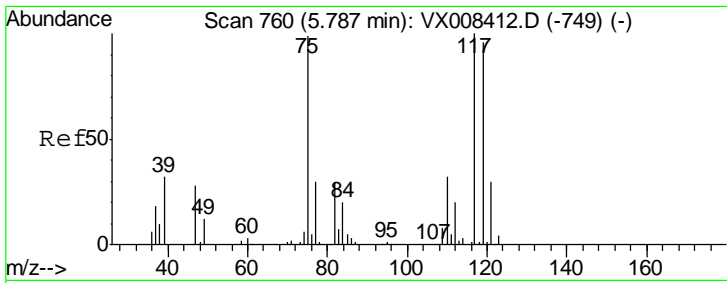
Tgt Ion	Resp	Lower	Upper
113	117271		
113	100		
111	103.0	83.0	124.4
192	19.9	15.6	23.4



#36
 1,1-Dichloropropene
 Concen: 4.778 ug/l
 RT: 5.66 min Scan# 739
 Delta R.T. -0.14 min
 Lab File: VX008511.D
 Acq: 28 Mar 2019 11:58

Tgt Ion	Resp	Lower	Upper
75	19658		
75	100		
110	7.6	16.6	49.7#
77	0.0	24.2	36.2#

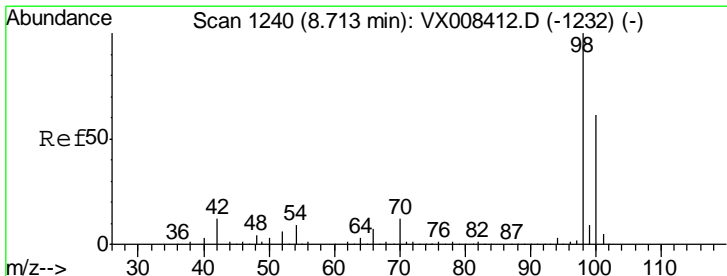
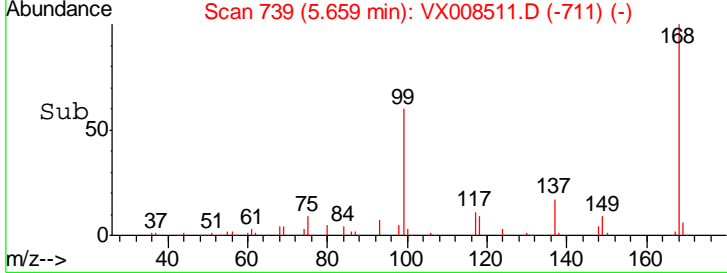
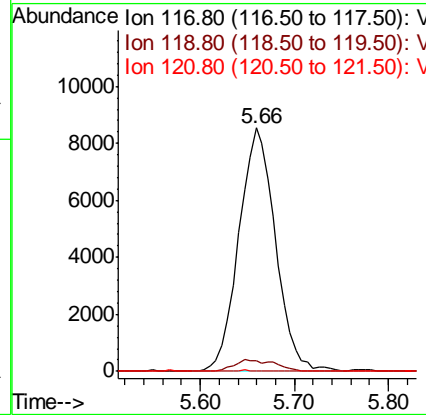
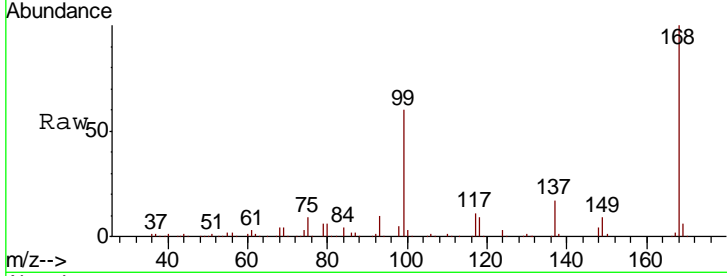




#38
 Carbon Tetrachloride
 Concen: 6.744 ug/l
 RT: 5.66 min Scan# 739
 Delta R.T. -0.13 min
 Lab File: VX008511.D
 Acq: 28 Mar 2019 11:58

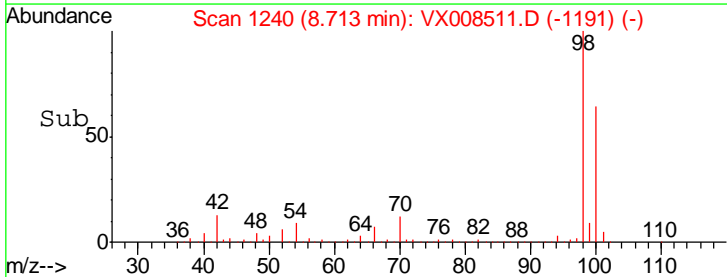
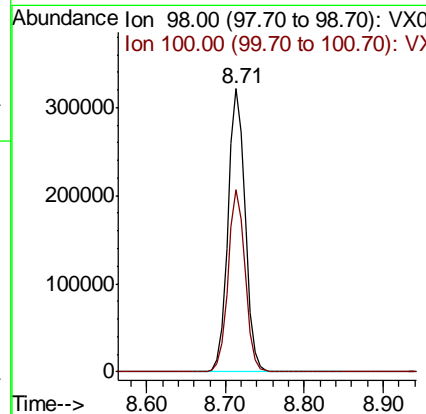
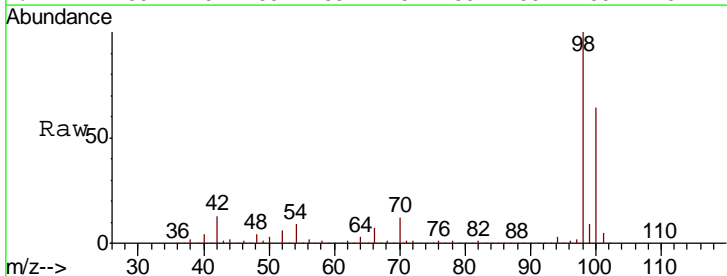
Instrument :
 MSVOA_X
 ClientSampled :
 FIELD-BLANK

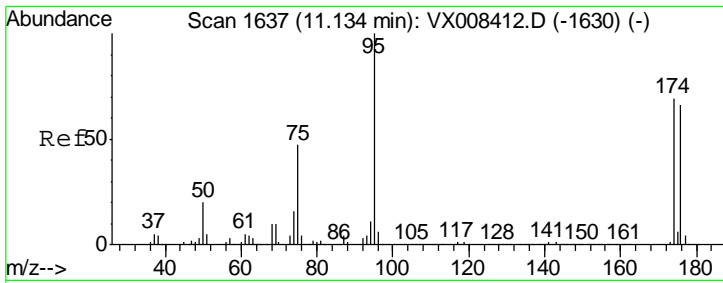
Tgt Ion	Resp	Lower	Upper
117	23157		
117	100		
119	4.3	76.7	115.1#
121	0.0	24.3	36.5#



#50
 Toluene-d8
 Concen: 48.053 ug/l
 RT: 8.71 min Scan# 1240
 Delta R.T. 0.00 min
 Lab File: VX008511.D
 Acq: 28 Mar 2019 11:58

Tgt Ion	Resp	Lower	Upper
98	483453		
98	100		
100	63.9	51.1	76.7

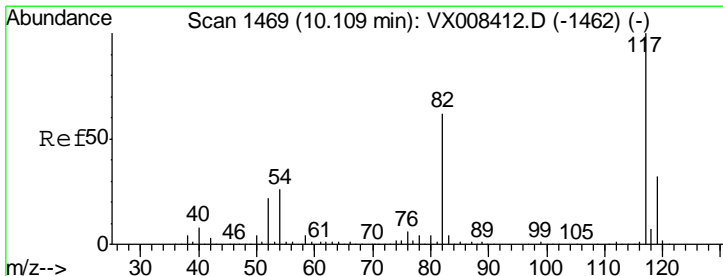
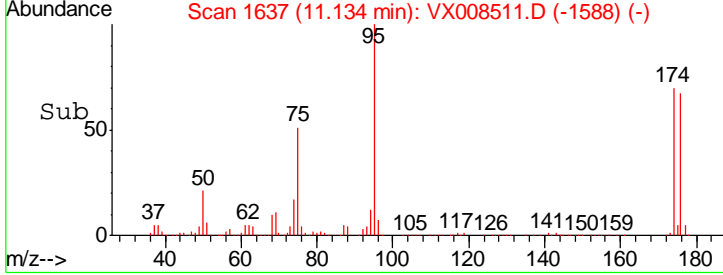
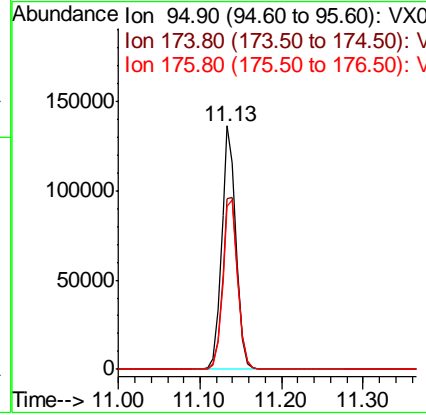
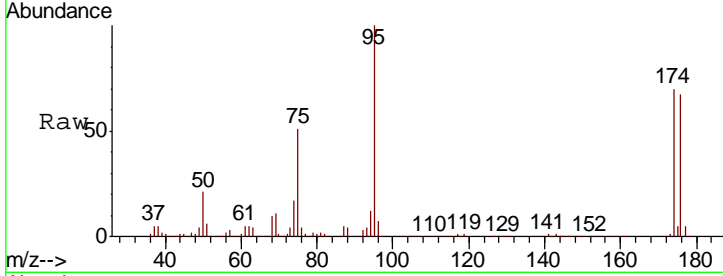




#62
 4-Bromofluorobenzene
 Concen: 45.218 ug/l
 RT: 11.13 min Scan# 1637
 Delta R.T. 0.00 min
 Lab File: VX008511.D
 Acq: 28 Mar 2019 11:58

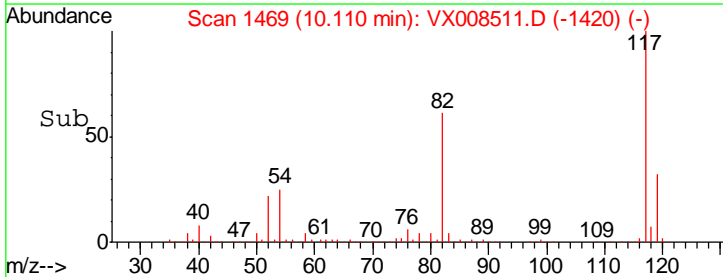
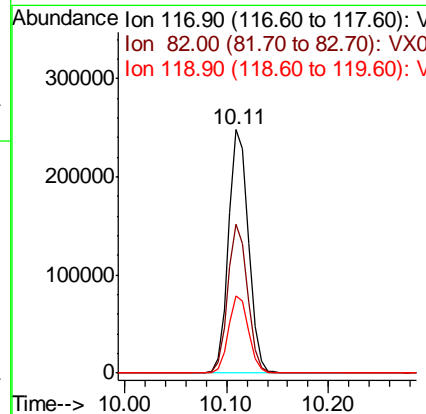
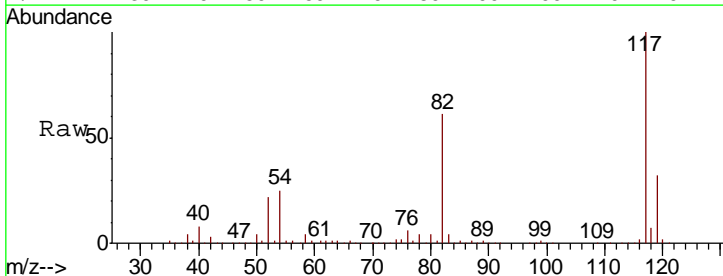
Instrument : MSVOA_X
 ClientSampled : FIELD-BLANK

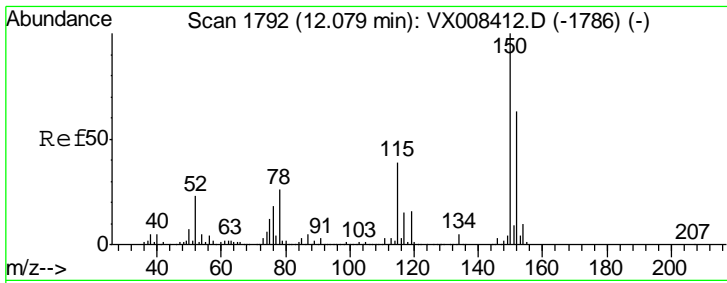
Tgt Ion	Resp	Lower	Upper
95	168580		
174	74.8	0.0	147.2
176	71.7	0.0	142.4



#63
 Chlorobenzene-d5
 Concen: 50.000 ug/l
 RT: 10.11 min Scan# 1469
 Delta R.T. 0.00 min
 Lab File: VX008511.D
 Acq: 28 Mar 2019 11:58

Tgt Ion	Resp	Lower	Upper
117	336589		
82	61.1	49.4	74.2
119	31.7	25.4	38.0

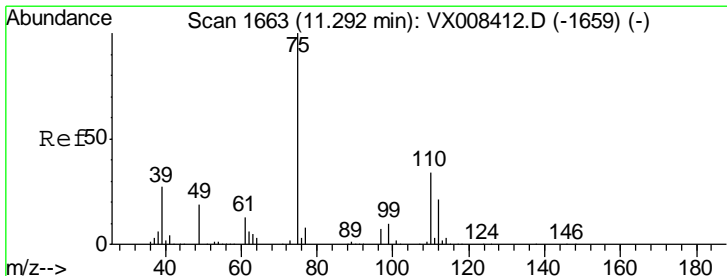
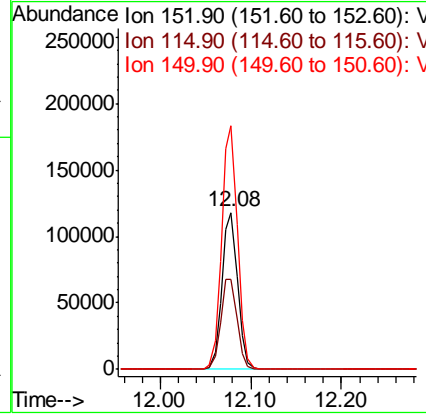
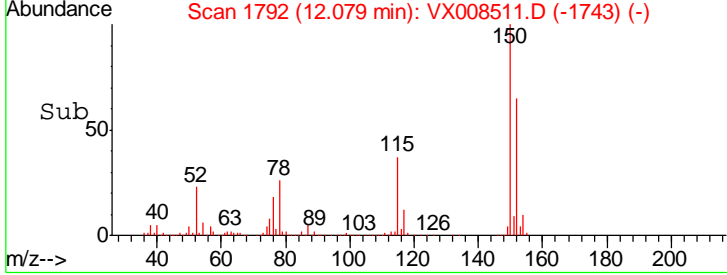
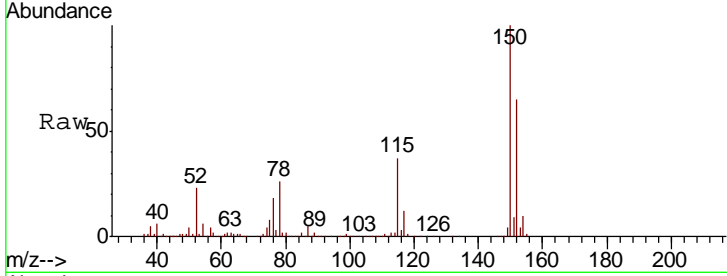




#72
 1,4-Dichlorobenzene-d4
 Concen: 50.000 ug/l
 RT: 12.08 min Scan# 1792
 Delta R.T. 0.00 min
 Lab File: VX008511.D
 Acq: 28 Mar 2019 11:58

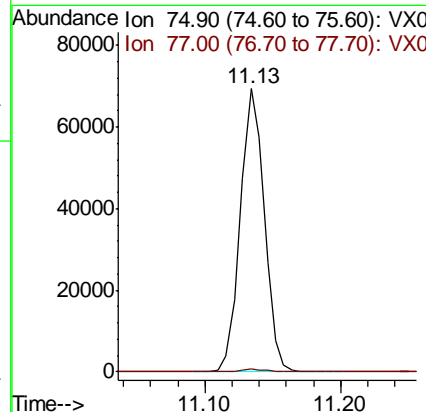
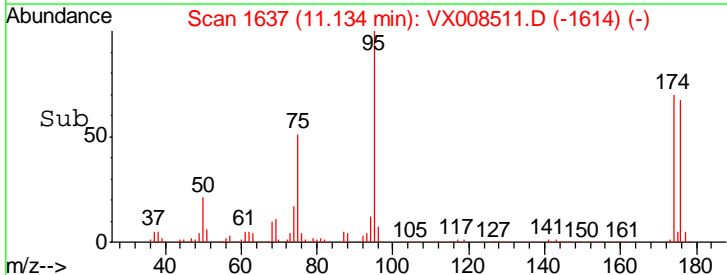
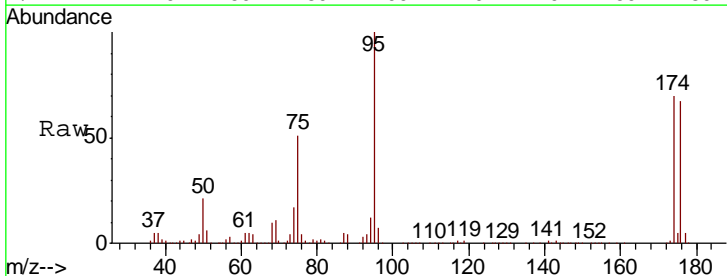
Instrument :
 MSVOA_X
 ClientSampled :
 FIELD-BLANK

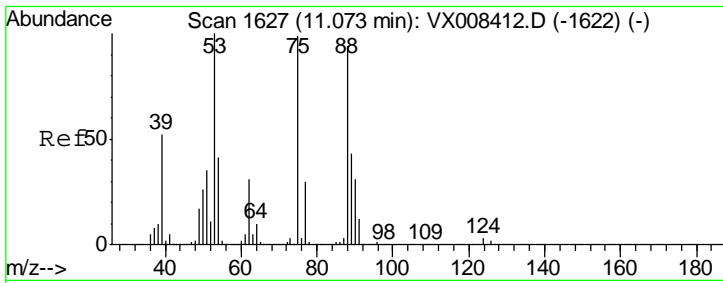
Tgt Ion	Resp	Lower	Upper
152	100		
115	60.3	43.5	130.5
150	156.7	0.0	348.8



#76
 1,2,3-Trichloropropane
 Concen: 20.140 ug/l
 RT: 11.13 min Scan# 1637
 Delta R.T. -0.16 min
 Lab File: VX008511.D
 Acq: 28 Mar 2019 11:58

Tgt Ion	Resp	Lower	Upper
75	100		
77	1.2	21.9	65.7#

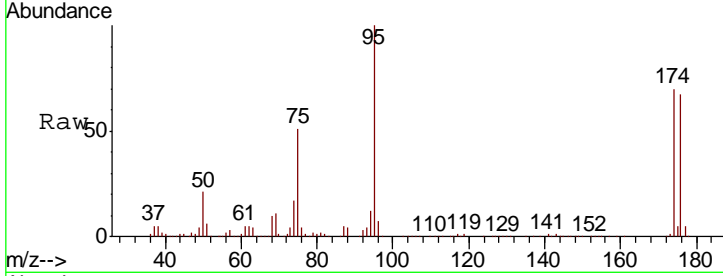




#81
 trans-1,4-Dichloro-2-butene
 Concen: 64.505 ug/l
 RT: 11.13 min Scan# 1637
 Delta R.T. 0.06 min
 Lab File: VX008511.D
 Acq: 28 Mar 2019 11:58

Instrument :
 MSVOA_X
 ClientSampled :
 FIELD-BLANK

Tot Ion	Ion	Ratio	Lower	Upper
75	100			
53	0.1	82.1	123.1#	
89	0.0	34.6	52.0#	



Abundance Ion 74.90 (74.60 to 75.60): VX0
 Ion 53.00 (52.70 to 53.70): VX0
 Ion 88.90 (88.60 to 89.60): VX0

