

Data Path : Z:\VOASRV\HPCHEM1\MSVOA X\DATA\VX032819\  
 Data File : VX008522.D  
 Acq On : 28 Mar 2019 16:13  
 Operator : JC/SP  
 Sample : K2115-06  
 Misc : 5.0mL/MSVOA X/WATER  
 ALS Vial : 17 Sample Multiplier: 1

Instrument :  
 MSVOA\_X  
 ClientSampleId :  
 QNWP8-MW25S-GW

Integration Parameters: RTEINT.P

Integrator: RTE  
 Smoothing : ON Filtering: 5  
 Sampling : 1 Min Area: 3 % of largest Peak  
 Start Thrs: 0.2 Max Peaks: 100  
 Stop Thrs : 0 Peak Location: TOP

If leading or trailing edge < 100 prefer < Baseline drop else tangent >  
 Peak separation: 5

Method : Z:\VOASRV\HPCHEM1\MSVOA\_X\METHOD\82X032519W.M  
 Title : SW846 8260

Signal : TIC

peak #	R.T. min	first scan	max scan	last scan	PK TY	peak height	corr. area	corr. % max.	% of total
1	1.282	17	21	23	rBV	12590	17184	1.34%	0.258%
2	1.324	23	28	35	rVV	28459	89251	6.96%	1.341%
3	2.604	231	238	244	rBV	19649	35978	2.80%	0.541%
4	3.190	323	334	343	rBV2	8911	23982	1.87%	0.360%
5	5.500	701	713	725	rBV	137425	387309	30.19%	5.821%
6	5.659	725	739	759	rVB	236309	677862	52.84%	10.187%
7	6.061	793	805	816	rBV	170699	453956	35.39%	6.822%
8	6.860	925	936	951	rBV	390380	927450	72.30%	13.938%
9	8.713	1233	1240	1251	rBV	821858	1282769	100.00%	19.278%
10	10.109	1463	1469	1488	rBV	743759	1033912	80.60%	15.538%
11	11.133	1631	1637	1647	rBV	586658	762749	59.46%	11.463%
12	12.078	1786	1792	1801	rBV	671022	863703	67.33%	12.980%
13	13.493	2016	2024	2028	rBV3	12145	18266	1.42%	0.275%
14	13.834	2068	2080	2085	rBV	14982	26428	2.06%	0.397%
15	14.157	2126	2133	2139	rBV	22227	36262	2.83%	0.545%
16	16.175	2457	2464	2470	rVB3	9441	17145	1.34%	0.258%

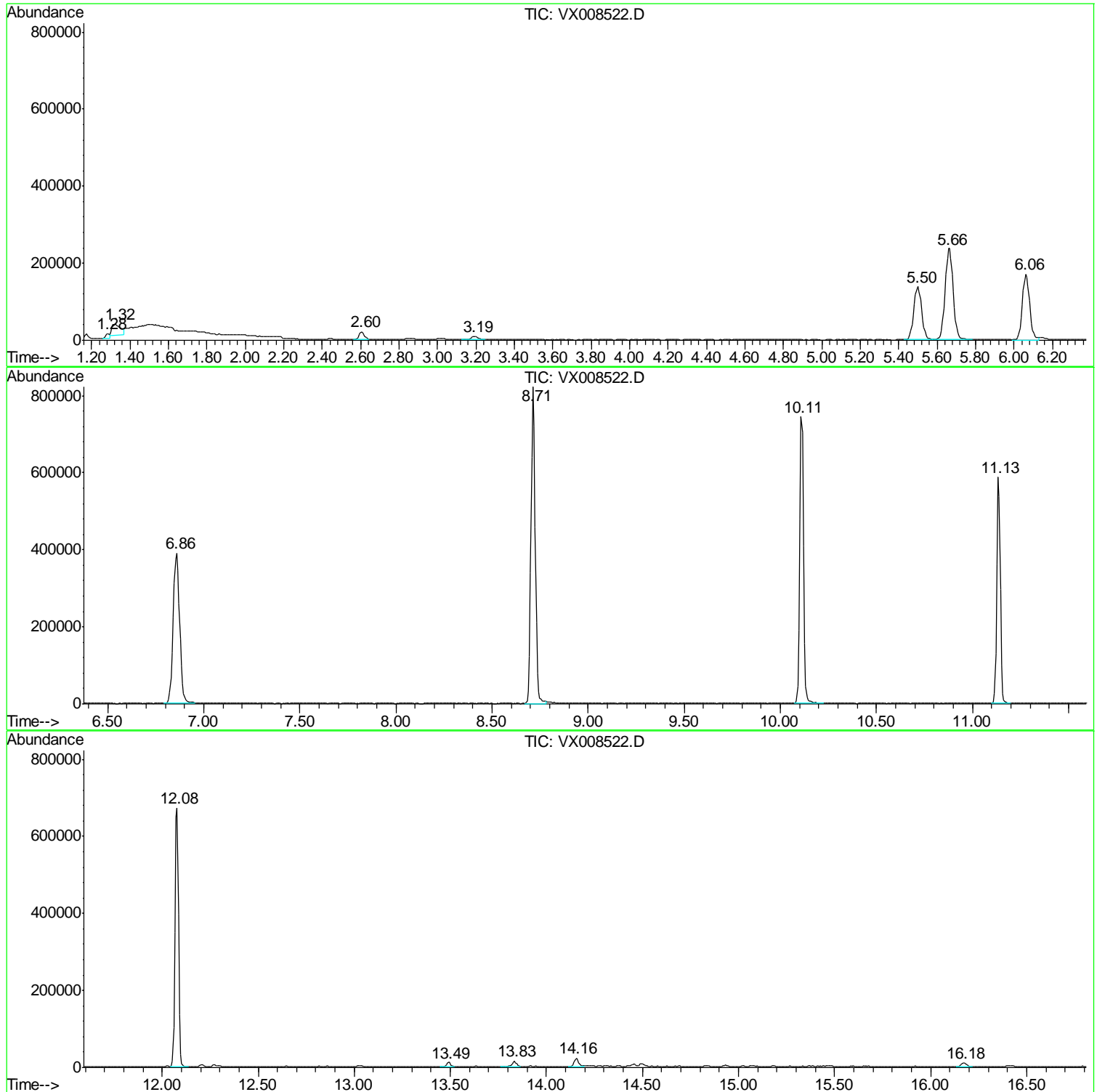
Sum of corrected areas: 6654206

Data Path : Z:\VOASRV\HPCHEM1\MSVOA X\DATA\VX032819\  
Data File : VX008522.D  
Acq On : 28 Mar 2019 16:13  
Operator : JC/SP  
Sample : K2115-06  
Misc : 5.0mL/MSVOA X/WATER  
ALS Vial : 17 Sample Multiplier: 1

Instrument :  
MSVOA\_X  
ClientSampled :  
QNWP8-MW25S-GW

Quant Method : Z:\VOASRV\HPCHEM1\MSVOA\_X\METHOD\82X032519W.M  
Quant Title : SW846 8260

TIC Library : C:\DATABASE\NIST11.L  
TIC Integration Parameters: LSCINT.P



Data Path : Z:\VOASRV\HPCHEM1\MSVOA X\DATA\VX032819\  
 Data File : VX008522.D  
 Acq On : 28 Mar 2019 16:13  
 Operator : JC/SP  
 Sample : K2115-06  
 Misc : 5.0mL/MSVOA X/WATER  
 ALS Vial : 17 Sample Multiplier: 1

Instrument :  
 MSVOA\_X  
 ClientSampleId :  
 QNWP8-MW25S-GW

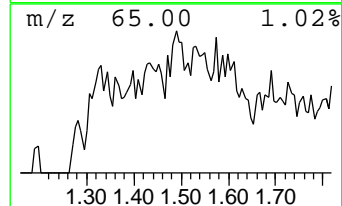
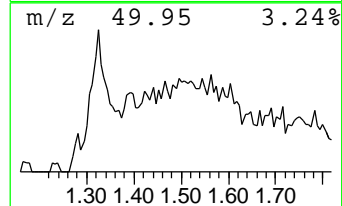
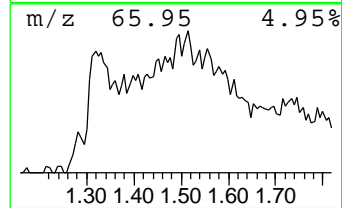
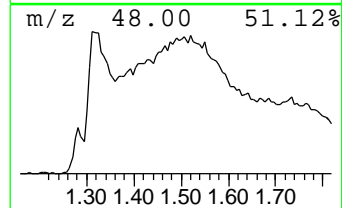
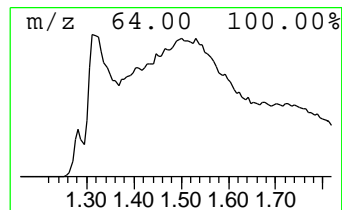
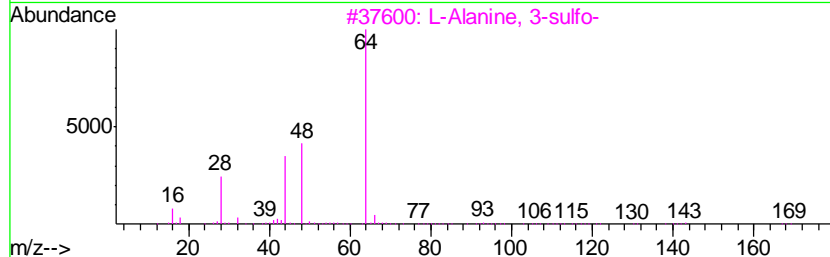
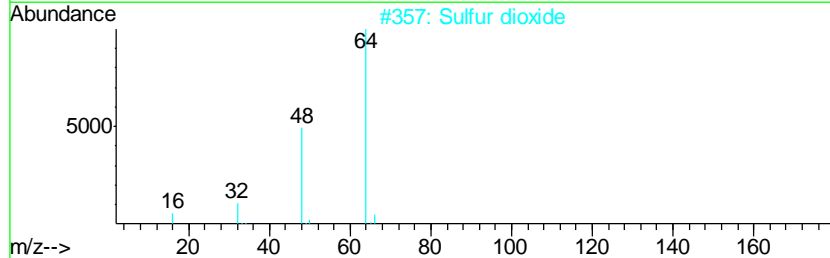
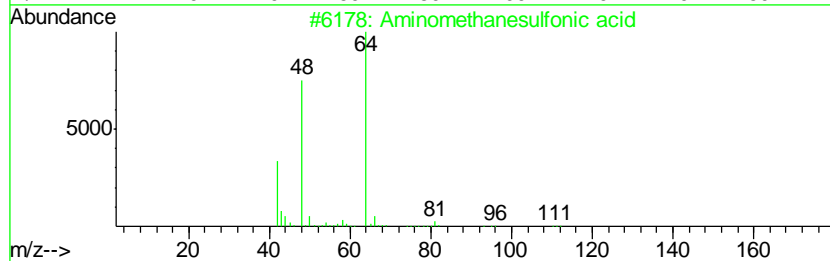
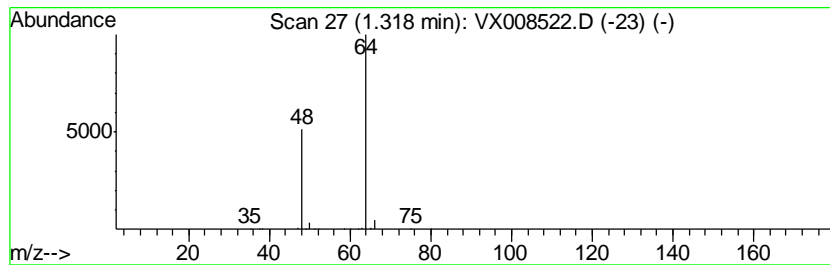
Quant Method : Z:\VOASRV\HPCHEM1\MSVOA\_X\METHOD\82X032519W.M  
 Quant Title : SW846 8260

TIC Library : C:\DATABASE\NIST11.L  
 TIC Integration Parameters: LSCINT.P

\*\*\*\*\*  
 Peak Number 1 Aminomethanesulfonic acid Concentration Rank 1

R.T.	EstConc	Area	Relative to ISTD	R.T.
1.32	6.58 ug/l	89251	Pentafluorobenzene	5.66

Hit#	of	Tentative ID	MW	MolForm	CAS#	Qual
1	5	Aminomethanesulfonic acid	111	CH5NO3S	013881-91-9	83
2		Sulfur dioxide	64	O2S	007446-09-5	83
3		L-Alanine, 3-sulfo-	169	C3H7NO5S	000498-40-8	9
4		Ethene, 1,1-difluoro-	64	C2H2F2	000075-38-7	4
5		Ethyl Chloride	64	C2H5Cl	000075-00-3	3



Data Path : Z:\VOASRV\HPCHEM1\MSVOA\_X\DATA\VX032819\  
Data File : VX008522.D  
Acq On : 28 Mar 2019 16:13  
Operator : JC/SP  
Sample : K2115-06  
Misc : 5.0mL/MSVOA\_X/WATER  
ALS Vial : 17 Sample Multiplier: 1

Instrument :  
MSVOA\_X  
ClientSampleId :  
QNWP8-MW25S-GW

Quant Method : Z:\VOASRV\HPCHEM1\MSVOA\_X\METHOD\82X032519W.M  
Quant Title : SW846 8260

TIC Library : C:\DATABASE\NIST11.L  
TIC Integration Parameters: LSCINT.P

TIC Top Hit name	RT	EstConc	Units	Response	--Internal Standard--			
					#	RT	Resp	Conc
Aminomethanesulfo...	1.32	6.6	ug/l	89251	1	5.66	677862	50.0