

Data Path : Z:\voasrv\HPCHEM1\MSVOA_X\Data\VX032823\
 Data File : VX034808.D
 Acq On : 28 Mar 2023 21:05
 Operator : JC/MD
 Sample : 02109-03
 Misc : 5.0mL/MSVOA_X/WATER
 ALS Vial : 32 Sample Multiplier: 1

Instrument :
 MSVOA_X
 ClientSampleId :
 B-30-GW01

Quant Time: Mar 29 04:08:33 2023
 Quant Method : Z:\voasrv\HPCHEM1\MSVOA_X\Method\82X031023W.M
 Quant Title : SW846 8260
 QLast Update : Mon Mar 13 10:29:32 2023
 Response via : Initial Calibration

Compound	R.T.	QIon	Response	Conc	Units	Dev(Min)

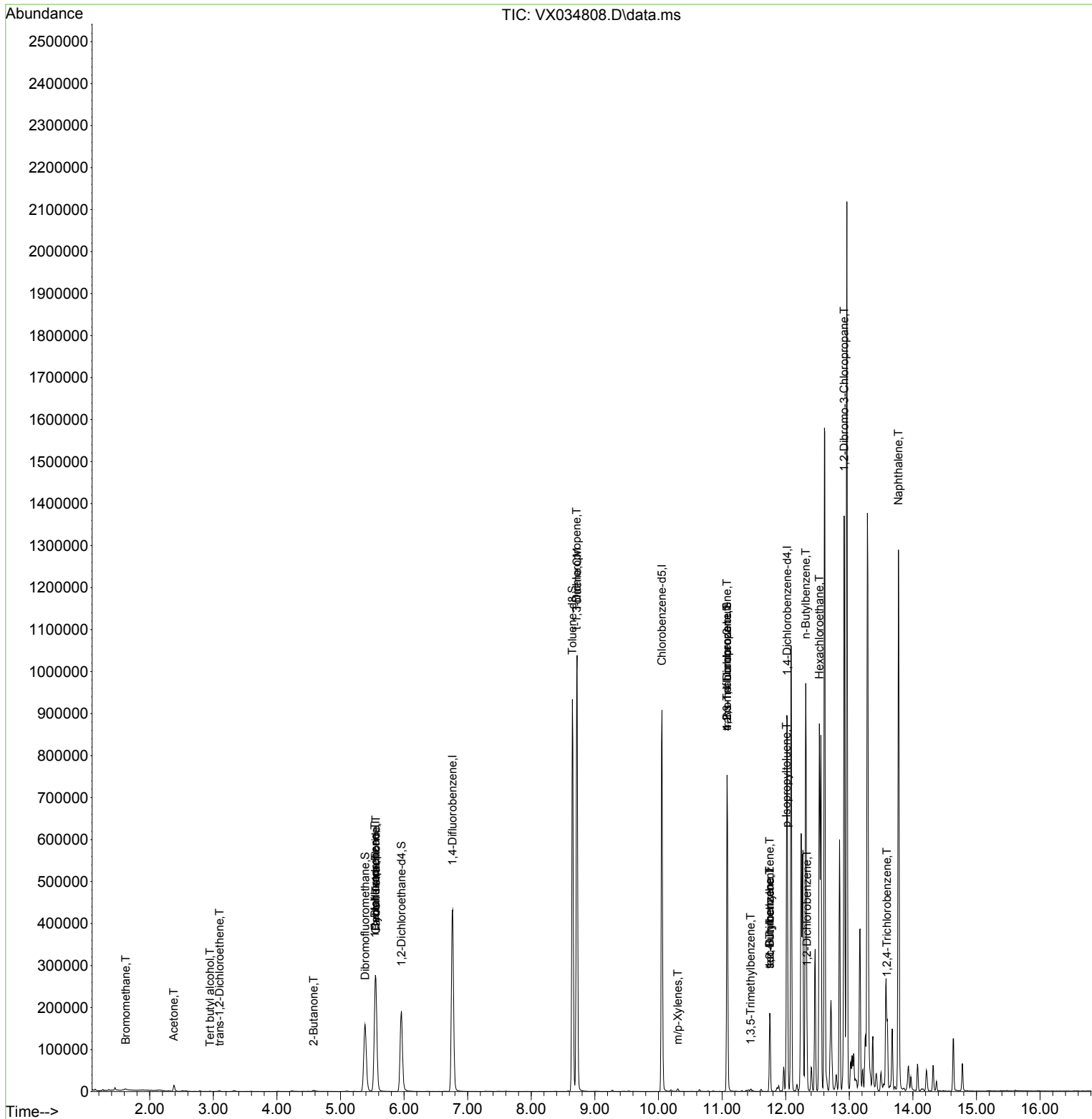
Internal Standards						
1) Pentafluorobenzene	5.550	168	256588	50.000	ug/l	0.00
34) 1,4-Difluorobenzene	6.763	114	437045	50.000	ug/l	0.00
63) Chlorobenzene-d5	10.055	117	389042	50.000	ug/l	0.00
72) 1,4-Dichlorobenzene-d4	12.024	152	179338	50.000	ug/l	0.00
System Monitoring Compounds						
33) 1,2-Dichloroethane-d4	5.958	65	182035	48.766	ug/l	0.01
Spiked Amount	50.000	Range	78 - 117	Recovery	=	97.540%
35) Dibromofluoromethane	5.385	113	133456	46.249	ug/l	0.00
Spiked Amount	50.000	Range	75 - 124	Recovery	=	92.500%
50) Toluene-d8	8.647	98	527887	49.005	ug/l	0.00
Spiked Amount	50.000	Range	92 - 112	Recovery	=	98.020%
62) 4-Bromofluorobenzene	11.079	95	188441	43.309	ug/l	0.00
Spiked Amount	50.000	Range	83 - 123	Recovery	=	86.620%
Target Compounds						
					Qvalue	
3) Chloromethane	1.294	50	330	Below Cal		94
5) Bromomethane	1.624	94	397	0.242	ug/l	86
11) Tert butyl alcohol	2.946	59	330	0.425	ug/l #	73
16) Acetone	2.380	43	15508	8.820	ug/l	90
21) trans-1,2-Dichloroethene	3.099	96	769	0.258	ug/l #	58
25) 2-Butanone	4.574	43	5132	2.040	ug/l #	90
31) Cyclohexane	5.550	56	6328	1.209	ug/l #	1
36) 1,1-Dichloropropene	5.544	75	21786	4.916	ug/l #	49
38) Carbon Tetrachloride	5.556	117	27039	6.133	ug/l #	16
52) Toluene	8.720	92	382299	47.627	ug/l	99
53) t-1,3-Dichloropropene	8.714	75	4548	0.906	ug/l #	1
68) m/p-Xylenes	10.305	106	1515	0.258	ug/l	96
76) 1,2,3-Trichloropropane	11.079	75	100050	24.297	ug/l #	34
80) 1,3,5-Trimethylbenzene	11.451	105	2654	0.228	ug/l	100
81) trans-1,4-Dichloro-2-b...	11.079	75	100050	65.730	ug/l #	8
83) tert-Butylbenzene	11.750	119	9187	0.784	ug/l #	53
84) 1,2,4-Trimethylbenzene	11.750	105	78396	6.598	ug/l	99
85) sec-Butylbenzene	11.750	105	78396	5.471	ug/l #	56
86) p-Isopropyltoluene	12.012	119	16423	1.364	ug/l	95
89) n-Butylbenzene	12.317	91	119709	11.181	ug/l #	13
90) Hexachloroethane	12.530	117	34684	15.563	ug/l #	15
91) 1,2-Dichlorobenzene	12.335	146	2221	0.353	ug/l	90
92) 1,2-Dibromo-3-Chloropr...	12.920	75	4436	4.221	ug/l #	5
93) 1,2,4-Trichlorobenzene	13.591	180	4249	1.079	ug/l #	78
95) Naphthalene	13.774	128	742734	56.248	ug/l	100

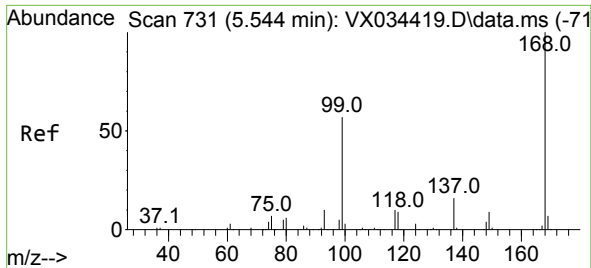
(#) = qualifier out of range (m) = manual integration (+) = signals summed

Data Path : Z:\voasrv\HPCHEM1\MSVOA_X\Data\VX032823\
 Data File : VX034808.D
 Acq On : 28 Mar 2023 21:05
 Operator : JC/MD
 Sample : 02109-03
 Misc : 5.0mL/MSVOA_X/WATER
 ALS Vial : 32 Sample Multiplier: 1

Instrument :
 MSVOA_X
 ClientSampleId :
 B-30-GW01

Quant Time: Mar 29 04:08:33 2023
 Quant Method : Z:\voasrv\HPCHEM1\MSVOA_X\Method\82X031023W.M
 Quant Title : SW846 8260
 QLast Update : Mon Mar 13 10:29:32 2023
 Response via : Initial Calibration

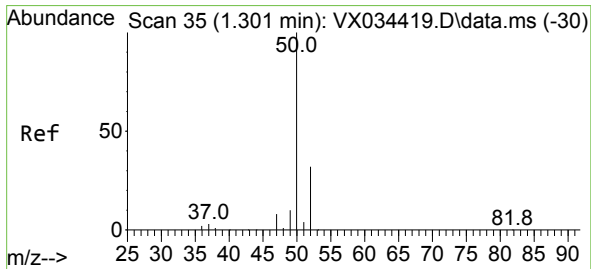
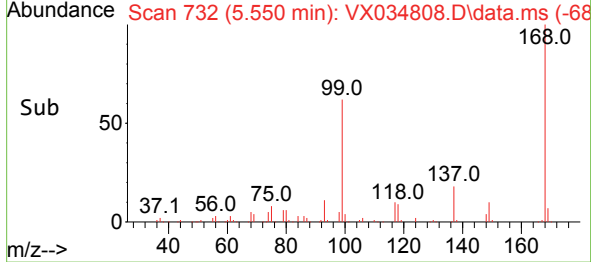
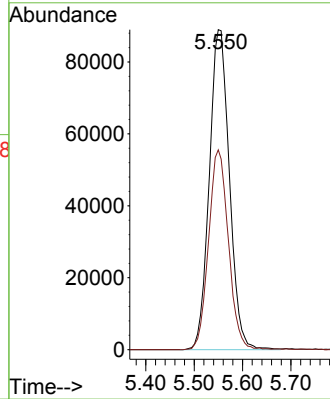
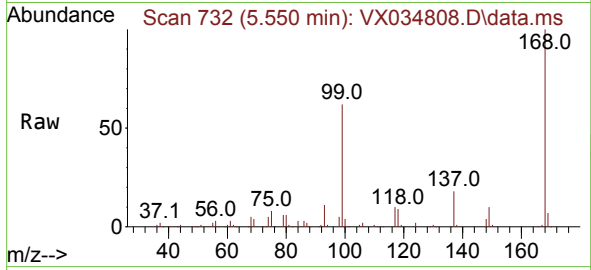




#1
 Pentafluorobenzene
 Concen: 50.000 ug/l
 RT: 5.550 min Scan# 71
 Delta R.T. 0.006 min
 Lab File: VX034808.D
 Acq: 28 Mar 2023 21:05

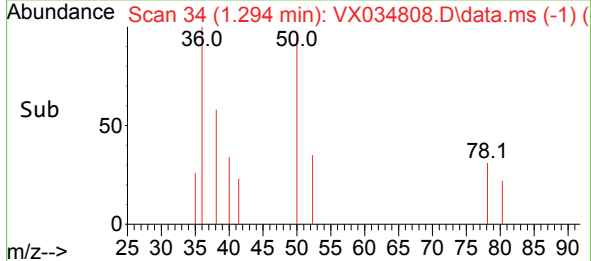
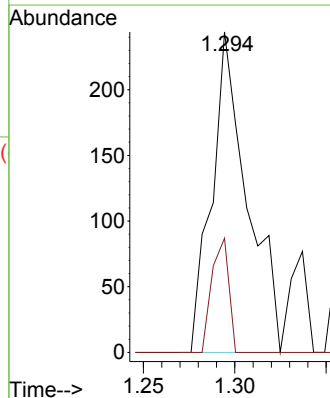
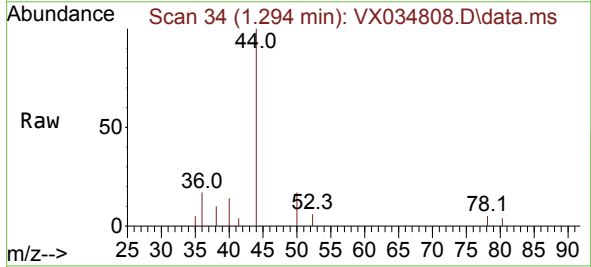
Instrument :
 MSVOA_X
 ClientSampleId :
 B-30-GW01

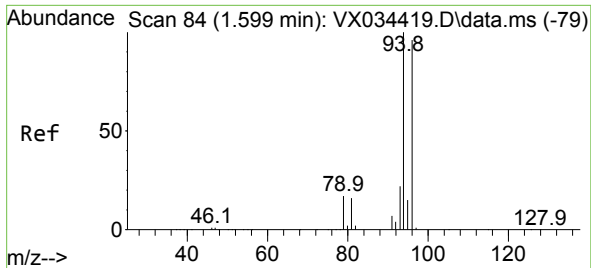
Tgt Ion:168 Resp: 256588
 Ion Ratio Lower Upper
 168 100
 99 62.5 45.7 68.5



#3
 Chloromethane
 Concen: Below Cal
 RT: 1.294 min Scan# 34
 Delta R.T. -0.007 min
 Lab File: VX034808.D
 Acq: 28 Mar 2023 21:05

Tgt Ion: 50 Resp: 330
 Ion Ratio Lower Upper
 50 100
 52 35.7 25.9 38.9

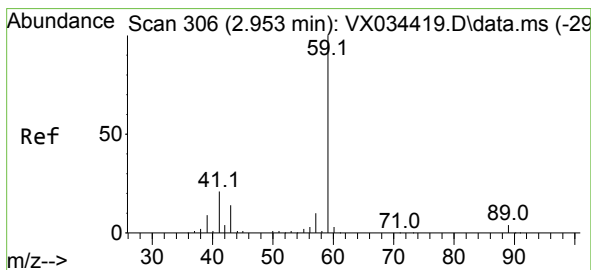
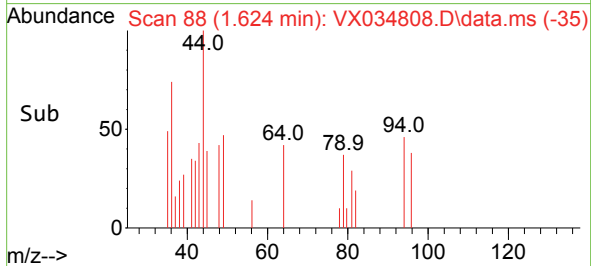
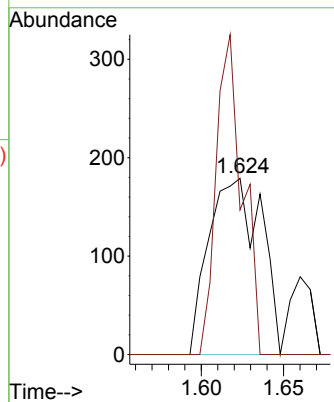
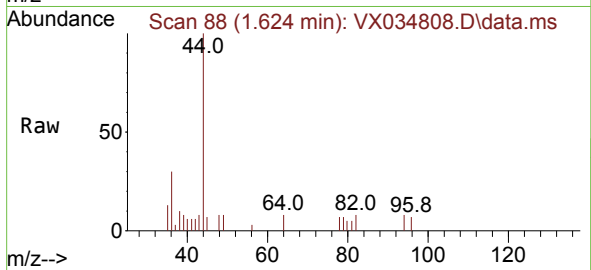




#5
 Bromomethane
 Concen: 0.242 ug/l
 RT: 1.624 min Scan# 84
 Delta R.T. 0.024 min
 Lab File: VX034808.D
 Acq: 28 Mar 2023 21:05

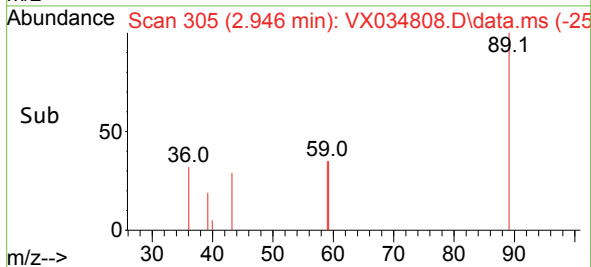
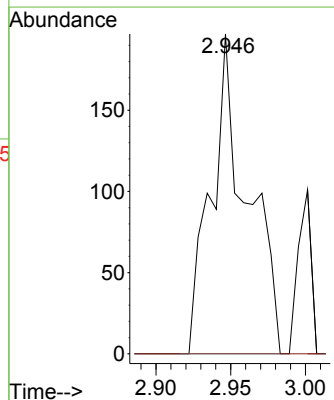
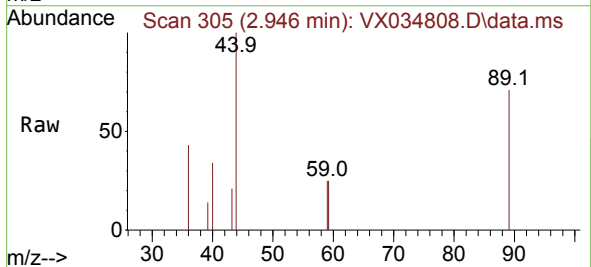
Instrument :
 MSVOA_X
 ClientSampleId :
 B-30-GW01

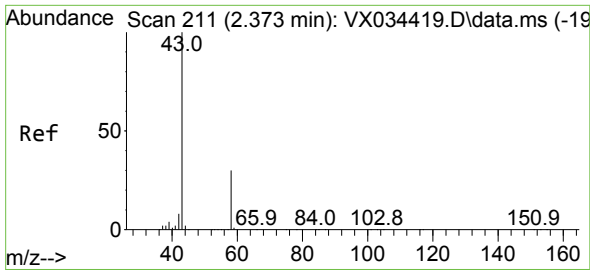
Tgt Ion: 94 Resp: 397
 Ion Ratio Lower Upper
 94 100
 96 82.1 77.0 115.6



#11
 Tert butyl alcohol
 Concen: 0.425 ug/l
 RT: 2.946 min Scan# 305
 Delta R.T. -0.006 min
 Lab File: VX034808.D
 Acq: 28 Mar 2023 21:05

Tgt Ion: 59 Resp: 330
 Ion Ratio Lower Upper
 59 100
 57 0.0 8.1 12.1#

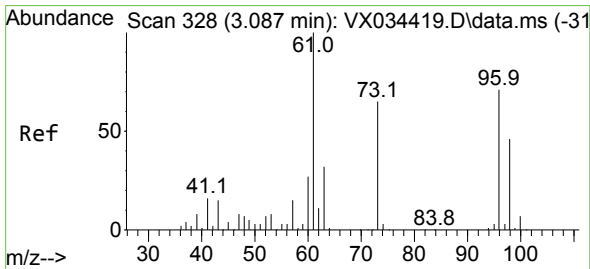
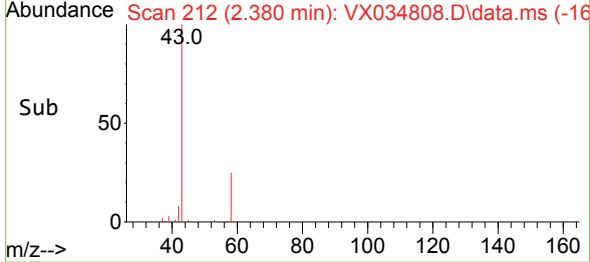
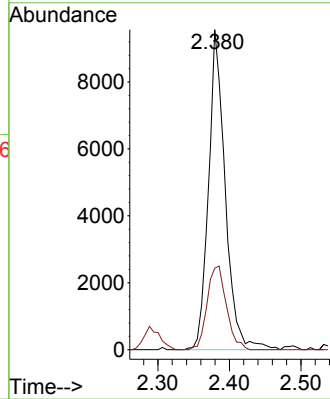
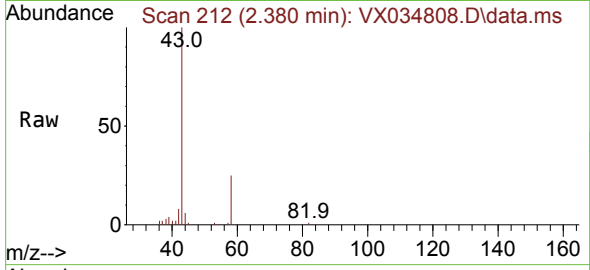




#16
 Acetone
 Concen: 8.820 ug/l
 RT: 2.380 min Scan# 211
 Delta R.T. 0.006 min
 Lab File: VX034808.D
 Acq: 28 Mar 2023 21:05

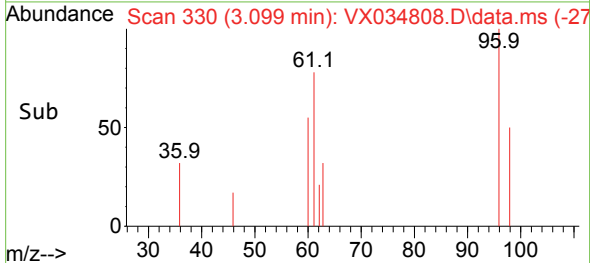
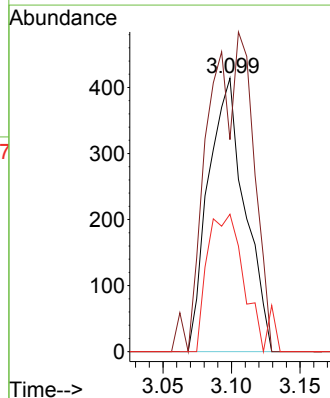
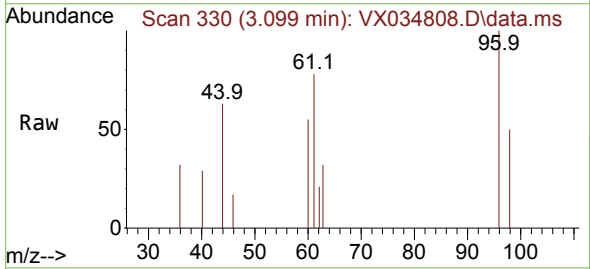
Instrument : MSVOA_X
 ClientSampleId : B-30-GW01

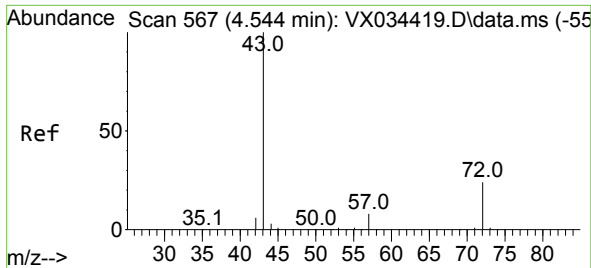
Tgt Ion: 43 Resp: 15508
 Ion Ratio Lower Upper
 43 100
 58 25.5 24.7 37.1



#21
 trans-1,2-Dichloroethene
 Concen: 0.258 ug/l
 RT: 3.099 min Scan# 330
 Delta R.T. 0.012 min
 Lab File: VX034808.D
 Acq: 28 Mar 2023 21:05

Tgt Ion: 96 Resp: 769
 Ion Ratio Lower Upper
 96 100
 61 77.5 113.0 169.6#
 98 50.2 52.1 78.1#

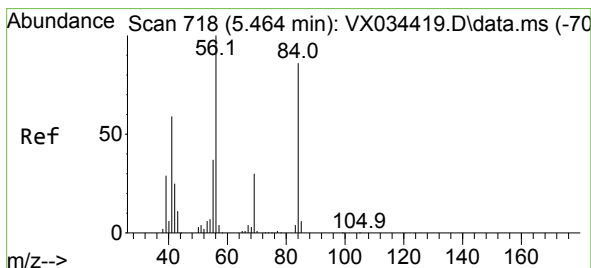
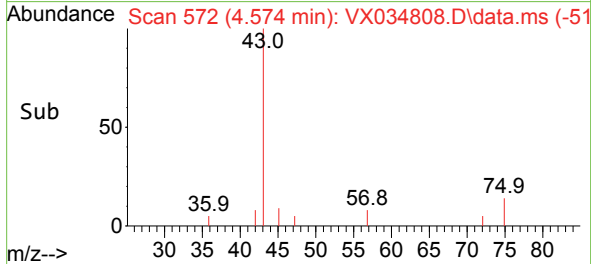
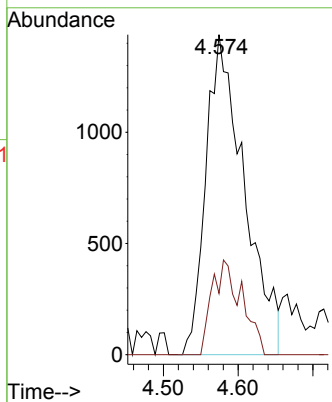
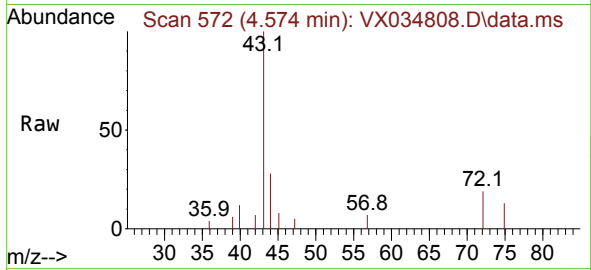




#25
 2-Butanone
 Concen: 2.040 ug/l
 RT: 4.574 min Scan# 51
 Delta R.T. 0.030 min
 Lab File: VX034808.D
 Acq: 28 Mar 2023 21:05

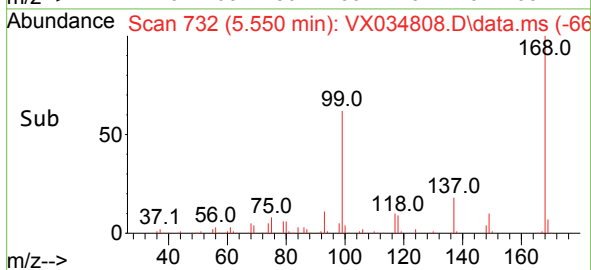
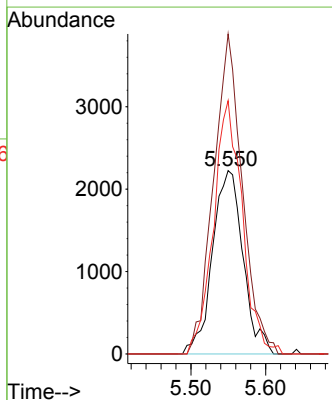
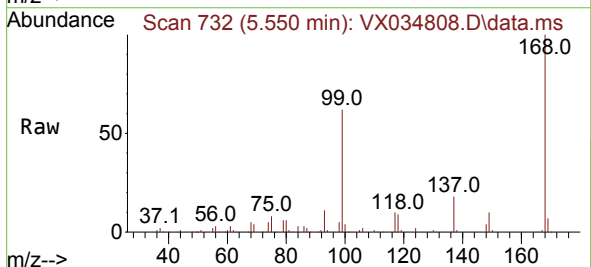
Instrument :
 MSVOA_X
 ClientSampleId :
 B-30-GW01

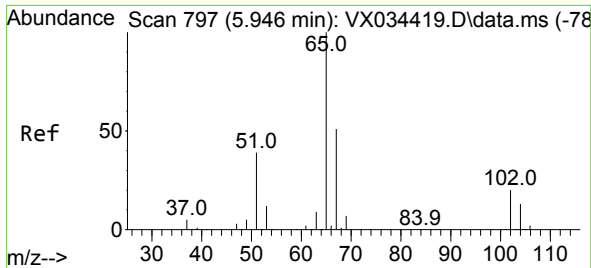
Tgt Ion: 43 Resp: 5132
 Ion Ratio Lower Upper
 43 100
 72 19.2 19.3 28.9#



#31
 Cyclohexane
 Concen: 1.209 ug/l
 RT: 5.550 min Scan# 732
 Delta R.T. 0.085 min
 Lab File: VX034808.D
 Acq: 28 Mar 2023 21:05

Tgt Ion: 56 Resp: 6328
 Ion Ratio Lower Upper
 56 100
 69 174.6 23.7 35.5#
 84 138.2 68.5 102.7#

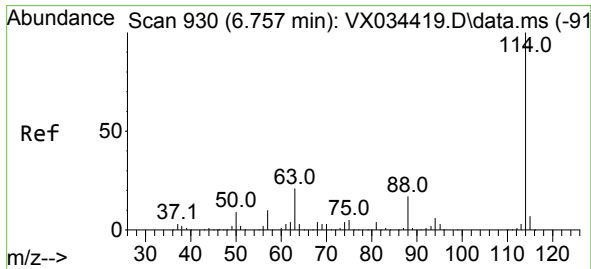
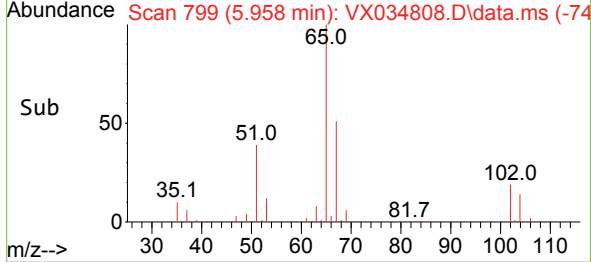
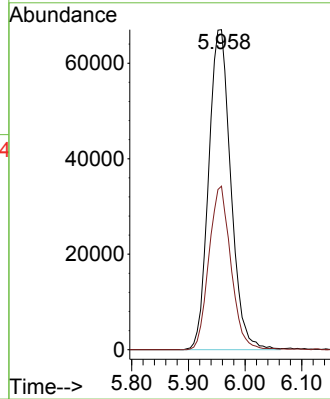
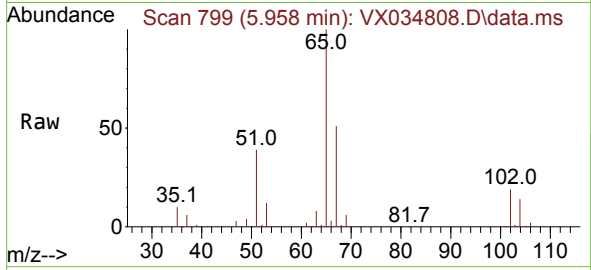




#33
 1,2-Dichloroethane-d4
 Concen: 48.766 ug/l
 RT: 5.958 min Scan# 799
 Delta R.T. 0.012 min
 Lab File: VX034808.D
 Acq: 28 Mar 2023 21:05

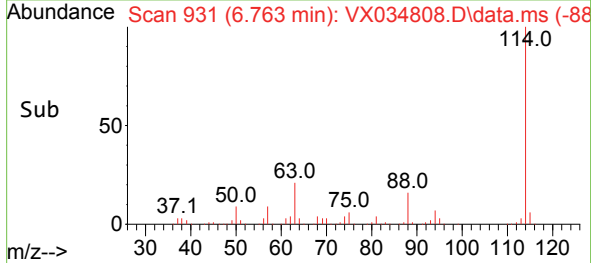
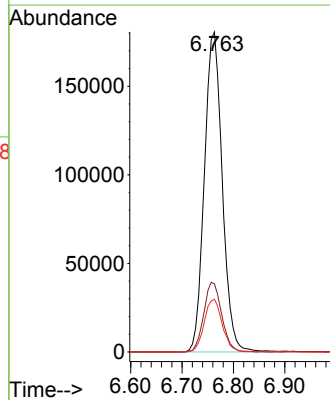
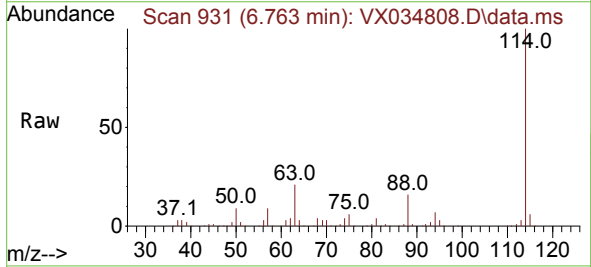
Instrument : MSVOA_X
 ClientSampleId : B-30-GW01

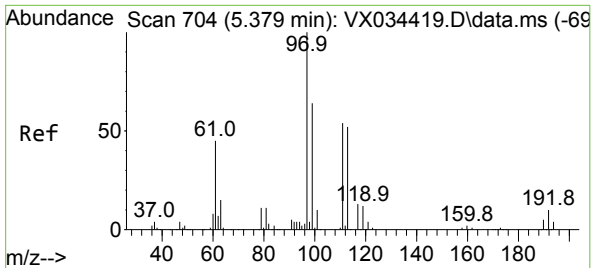
Tgt Ion: 65 Resp: 182035
 Ion Ratio Lower Upper
 65 100
 67 50.8 0.0 104.0



#34
 1,4-Difluorobenzene
 Concen: 50.000 ug/l
 RT: 6.763 min Scan# 931
 Delta R.T. 0.006 min
 Lab File: VX034808.D
 Acq: 28 Mar 2023 21:05

Tgt Ion: 114 Resp: 437045
 Ion Ratio Lower Upper
 114 100
 63 21.3 0.0 42.2
 88 16.4 0.0 33.2



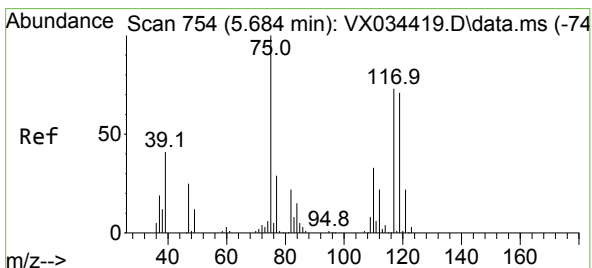
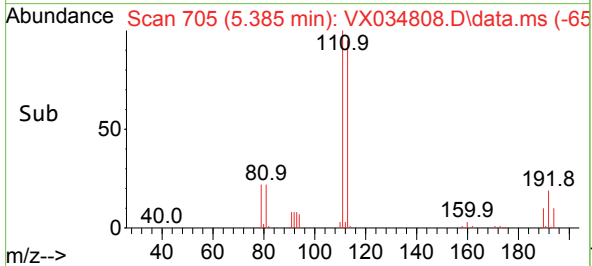
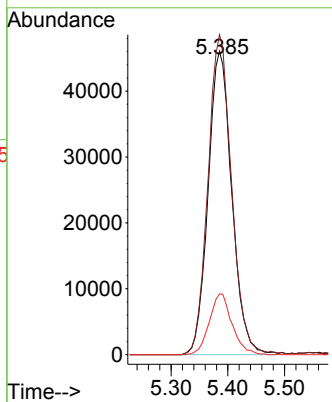
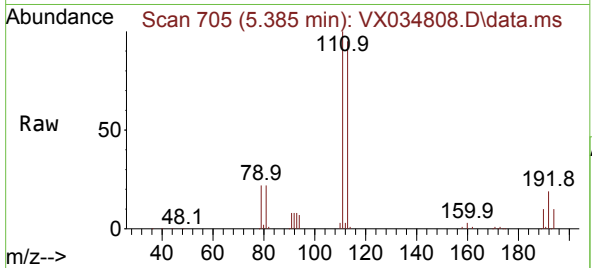


#35
 Dibromofluoromethane
 Concen: 46.249 ug/l
 RT: 5.385 min Scan# 704
 Delta R.T. 0.006 min
 Lab File: VX034808.D
 Acq: 28 Mar 2023 21:05

Instrument : MSVOA_X
 ClientSampleId : B-30-GW01

Tgt Ion:113 Resp: 133456

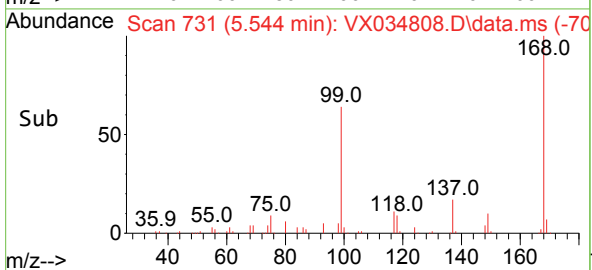
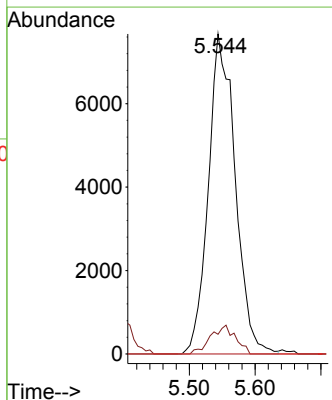
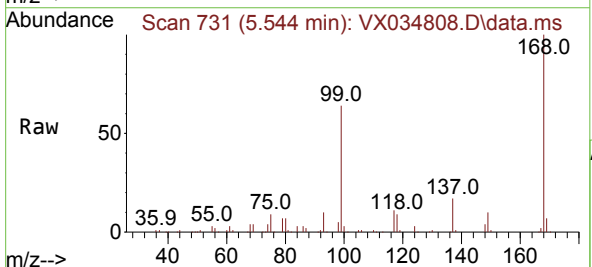
Ion	Ratio	Lower	Upper
113	100		
111	105.5	83.7	125.5
192	19.3	15.4	23.2

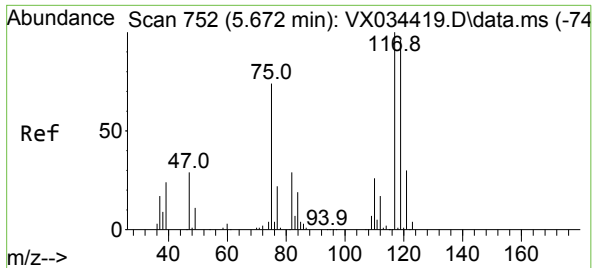


#36
 1,1-Dichloropropene
 Concen: 4.916 ug/l
 RT: 5.544 min Scan# 731
 Delta R.T. -0.140 min
 Lab File: VX034808.D
 Acq: 28 Mar 2023 21:05

Tgt Ion: 75 Resp: 21786

Ion	Ratio	Lower	Upper
75	100		
110	8.3	17.5	52.5#
77	0.0	24.3	36.5#

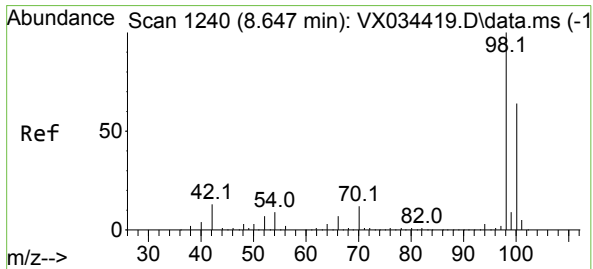
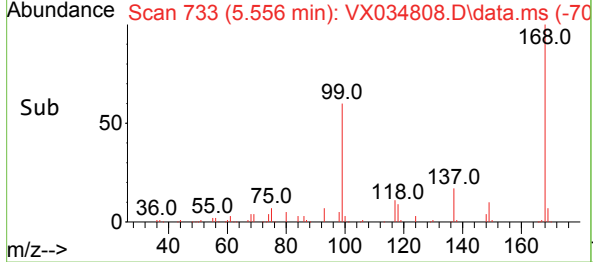
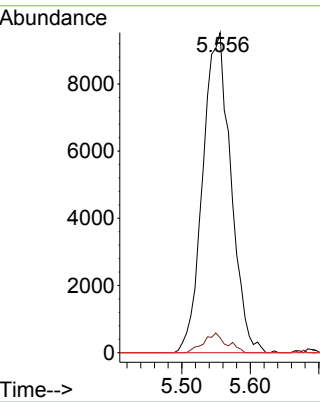
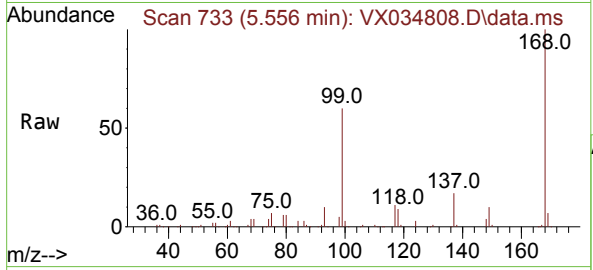




#38
 Carbon Tetrachloride
 Concen: 6.133 ug/l
 RT: 5.556 min Scan# 711
 Delta R.T. -0.116 min
 Lab File: VX034808.D
 Acq: 28 Mar 2023 21:05

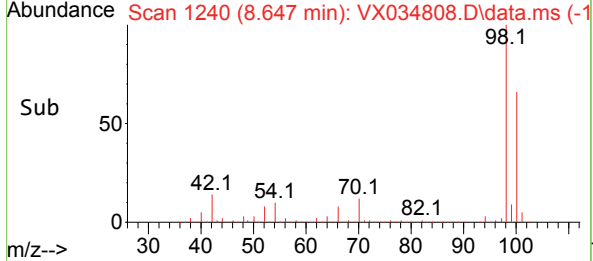
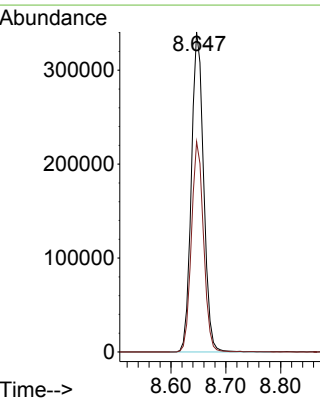
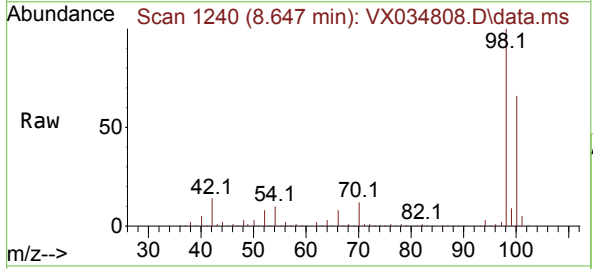
Instrument : MSVOA_X
 ClientSampleId : B-30-GW01

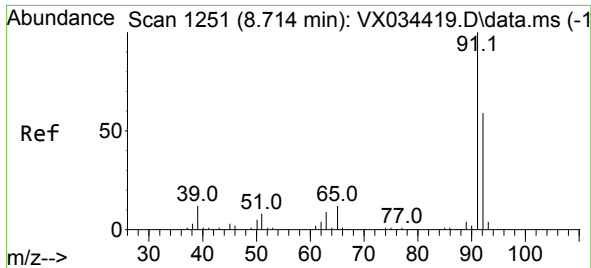
Tgt Ion	Resp	Lower	Upper
117	100		
119	4.7	76.6	114.8#
121	0.0	23.8	35.6#



#50
 Toluene-d8
 Concen: 49.005 ug/l
 RT: 8.647 min Scan# 1240
 Delta R.T. -0.000 min
 Lab File: VX034808.D
 Acq: 28 Mar 2023 21:05

Tgt Ion	Resp	Lower	Upper
98	100		
100	65.1	52.5	78.7

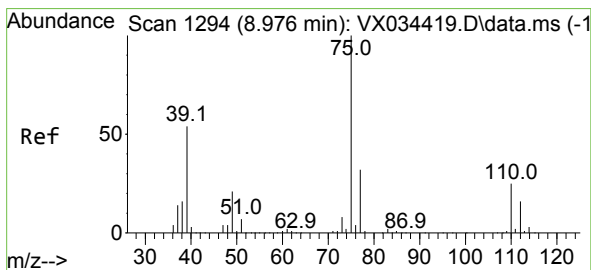
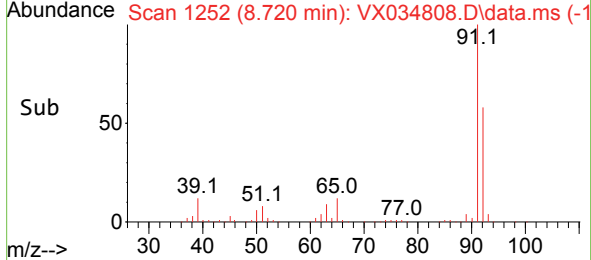
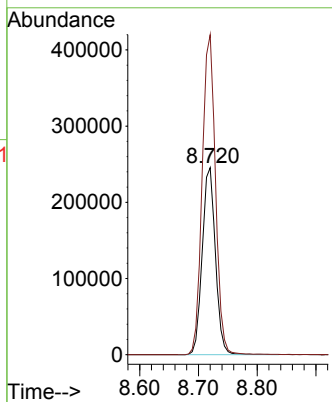
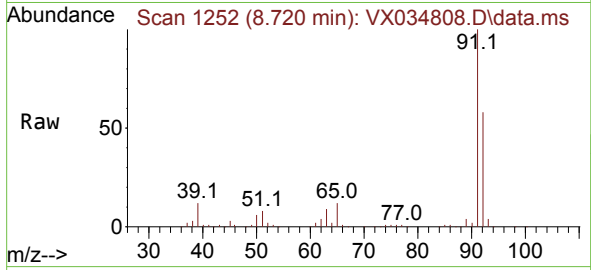




#52
 Toluene
 Concen: 47.627 ug/l
 RT: 8.720 min Scan# 1252
 Delta R.T. 0.006 min
 Lab File: VX034808.D
 Acq: 28 Mar 2023 21:05

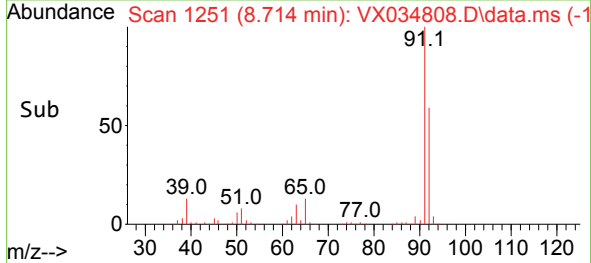
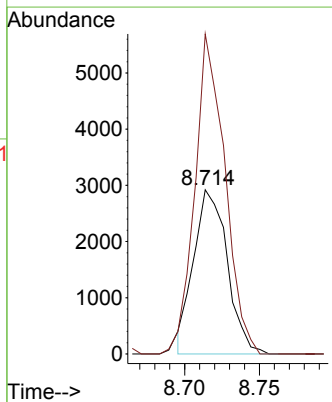
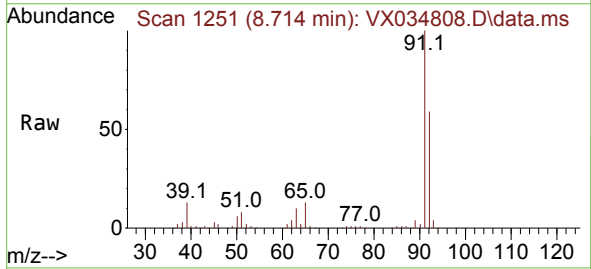
Instrument : MSVOA_X
 ClientSampleId : B-30-GW01

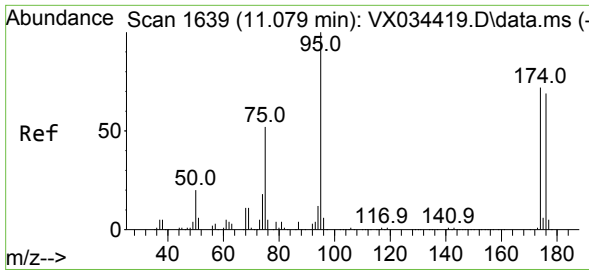
Tgt Ion: 92 Resp: 382299
 Ion Ratio Lower Upper
 92 100
 91 172.9 136.8 205.2



#53
 t-1,3-Dichloropropene
 Concen: 0.906 ug/l
 RT: 8.714 min Scan# 1251
 Delta R.T. -0.262 min
 Lab File: VX034808.D
 Acq: 28 Mar 2023 21:05

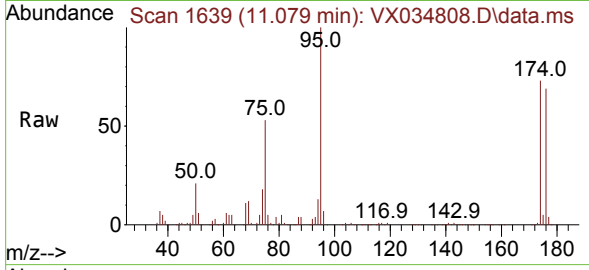
Tgt Ion: 75 Resp: 4548
 Ion Ratio Lower Upper
 75 100
 77 194.9 25.4 38.2#



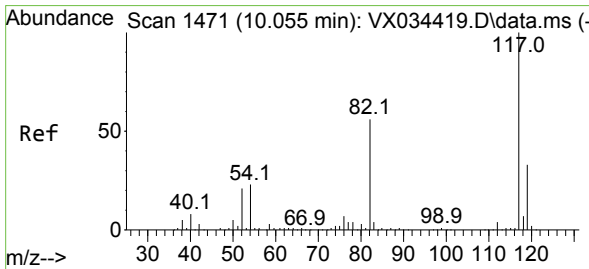
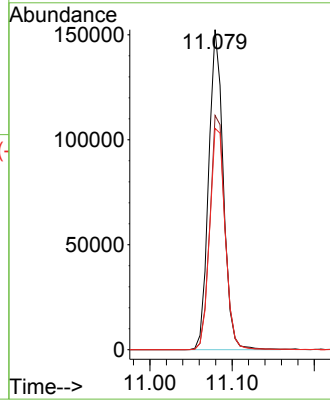
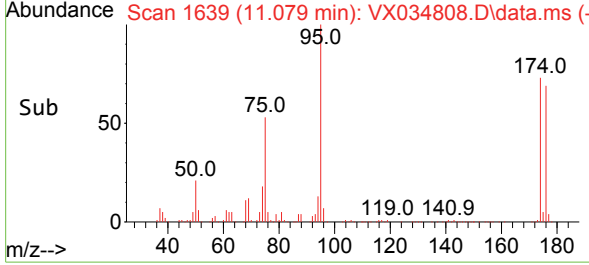


#62
 4-Bromofluorobenzene
 Concen: 43.309 ug/l
 RT: 11.079 min Scan# 1639
 Delta R.T. -0.000 min
 Lab File: VX034808.D
 Acq: 28 Mar 2023 21:05

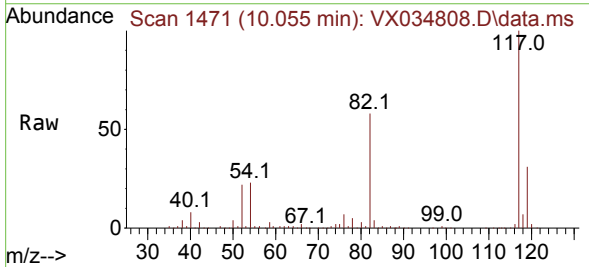
Instrument : MSVOA_X
 ClientSampleId : B-30-GW01



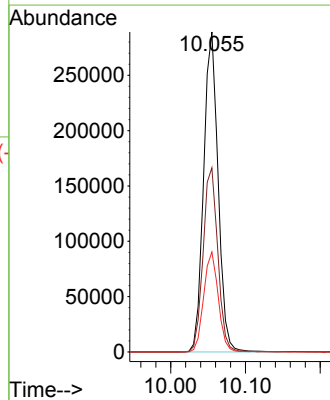
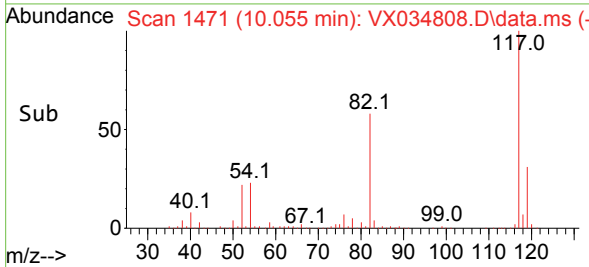
Tgt Ion: 95 Resp: 188441
 Ion Ratio Lower Upper
 95 100
 174 75.9 0.0 147.4
 176 73.4 0.0 140.6

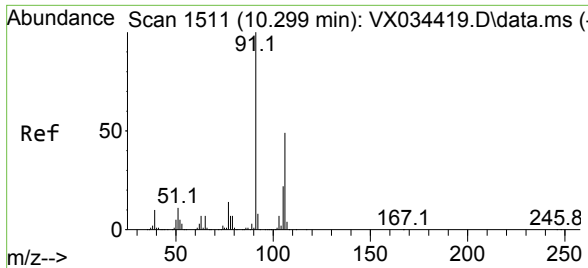


#63
 Chlorobenzene-d5
 Concen: 50.000 ug/l
 RT: 10.055 min Scan# 1471
 Delta R.T. -0.000 min
 Lab File: VX034808.D
 Acq: 28 Mar 2023 21:05



Tgt Ion: 117 Resp: 389042
 Ion Ratio Lower Upper
 117 100
 82 57.6 45.0 67.4
 119 31.2 26.0 39.0

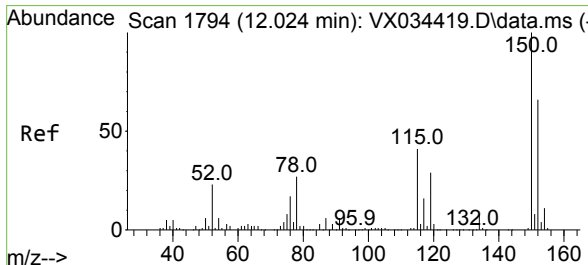
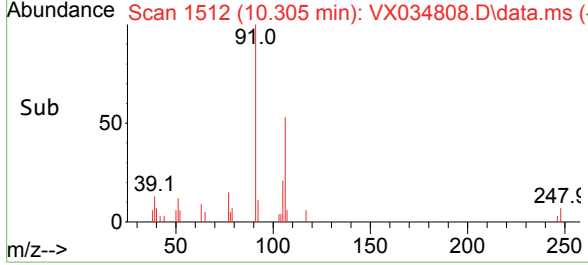
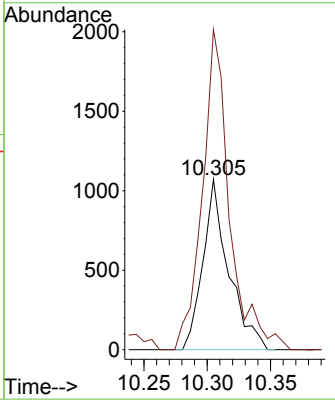
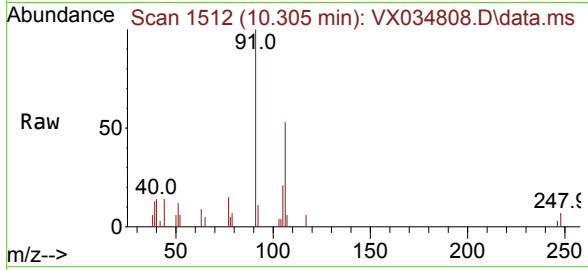




#68
 m/p-Xylenes
 Concen: 0.258 ug/l
 RT: 10.305 min Scan# 1512
 Delta R.T. 0.006 min
 Lab File: VX034808.D
 Acq: 28 Mar 2023 21:05

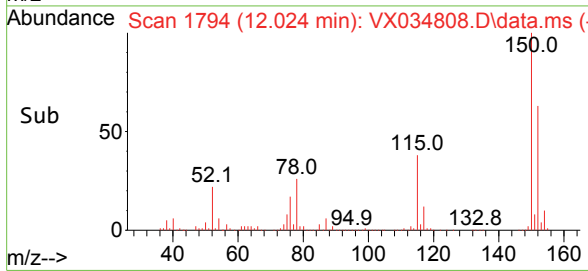
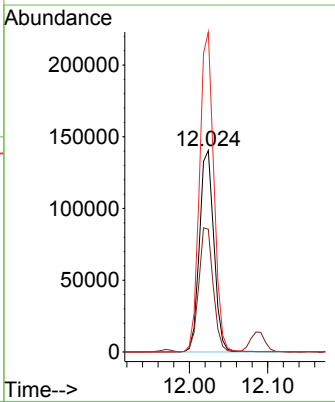
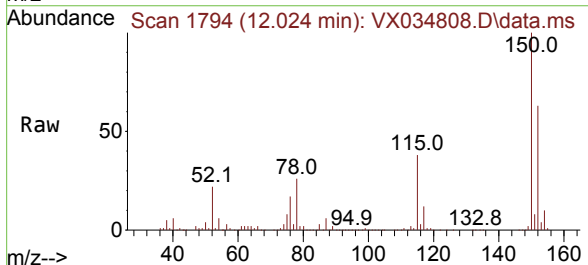
Instrument : MSVOA_X
 ClientSampleId : B-30-GW01

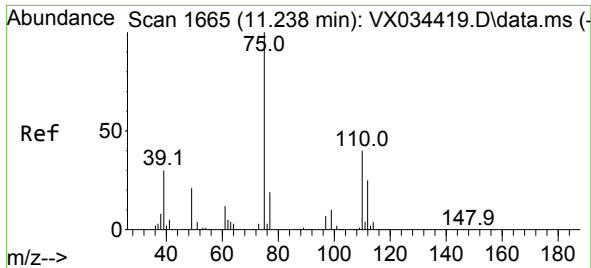
Tgt Ion:106 Resp: 1515
 Ion Ratio Lower Upper
 106 100
 91 198.1 164.0 246.0



#72
 1,4-Dichlorobenzene-d4
 Concen: 50.000 ug/l
 RT: 12.024 min Scan# 1794
 Delta R.T. -0.000 min
 Lab File: VX034808.D
 Acq: 28 Mar 2023 21:05

Tgt Ion:152 Resp: 179338
 Ion Ratio Lower Upper
 152 100
 115 61.5 45.0 135.0
 150 157.6 0.0 352.4

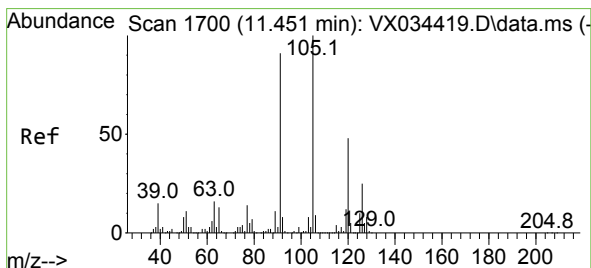
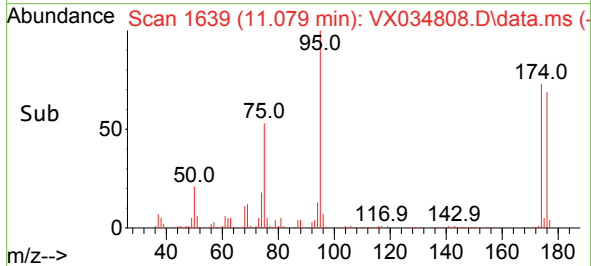
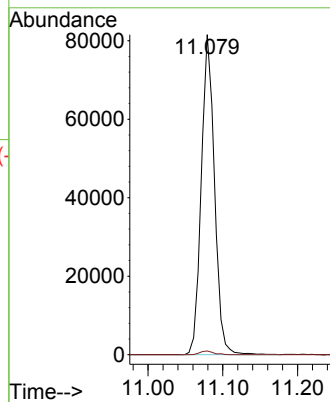
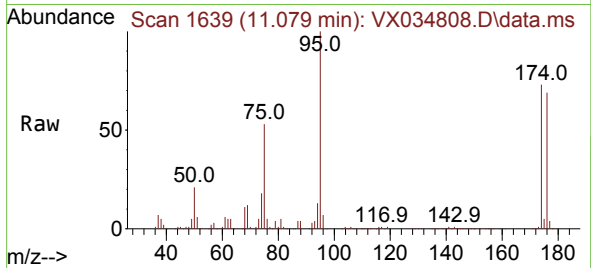




#76
 1,2,3-Trichloropropane
 Concen: 24.297 ug/l
 RT: 11.079 min Scan# 11079
 Delta R.T. -0.159 min
 Lab File: VX034808.D
 Acq: 28 Mar 2023 21:05

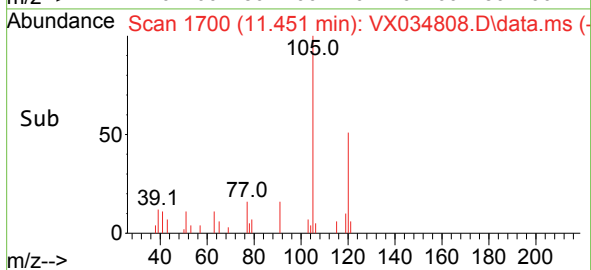
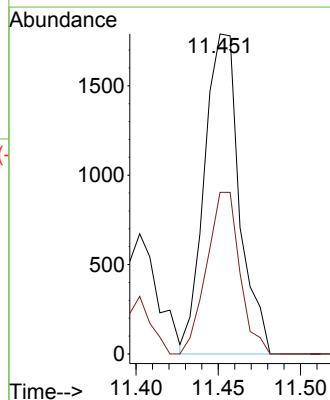
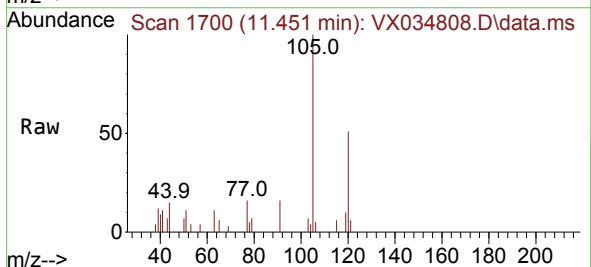
Instrument : MSVOA_X
 ClientSampleId : B-30-GW01

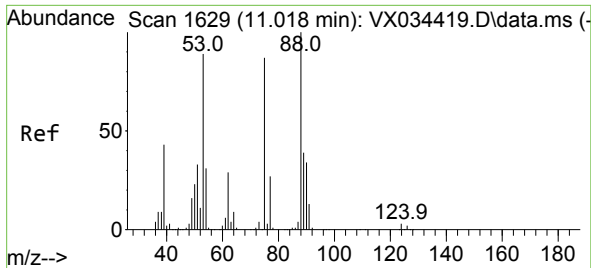
Tgt Ion: 75 Resp: 100050
 Ion Ratio Lower Upper
 75 100
 77 1.2 21.6 64.8#



#80
 1,3,5-Trimethylbenzene
 Concen: 0.228 ug/l
 RT: 11.451 min Scan# 1700
 Delta R.T. -0.000 min
 Lab File: VX034808.D
 Acq: 28 Mar 2023 21:05

Tgt Ion: 105 Resp: 2654
 Ion Ratio Lower Upper
 105 100
 120 47.7 23.7 71.1

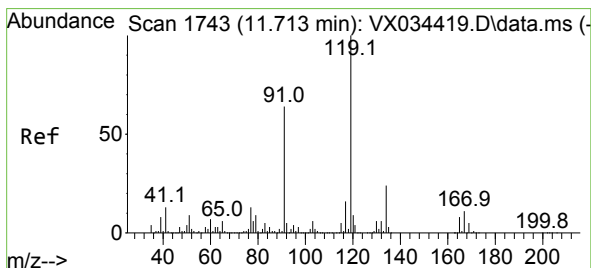
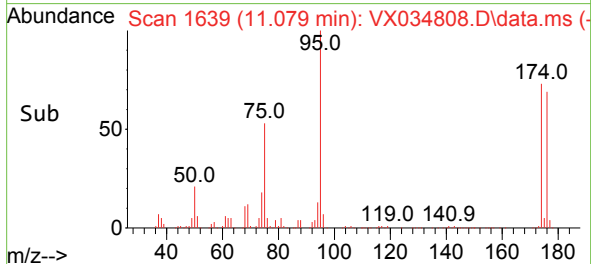
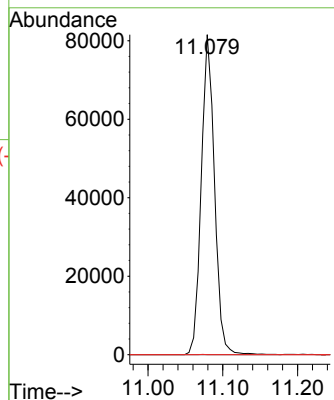
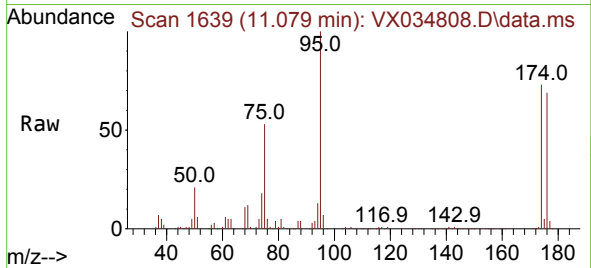




#81
 trans-1,4-Dichloro-2-butene
 Concen: 65.730 ug/l
 RT: 11.079 min Scan# 1639
 Delta R.T. 0.061 min
 Lab File: VX034808.D
 Acq: 28 Mar 2023 21:05

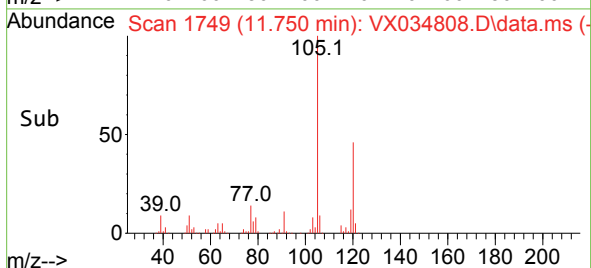
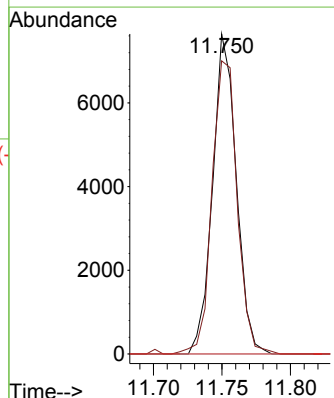
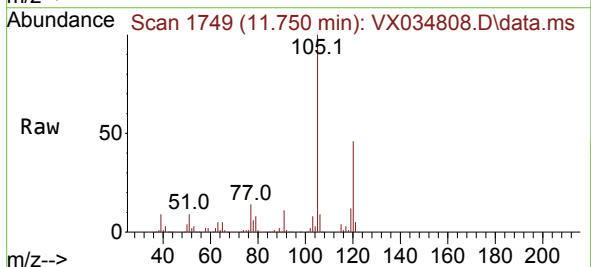
Instrument :
 MSVOA_X
 ClientSampleId :
 B-30-GW01

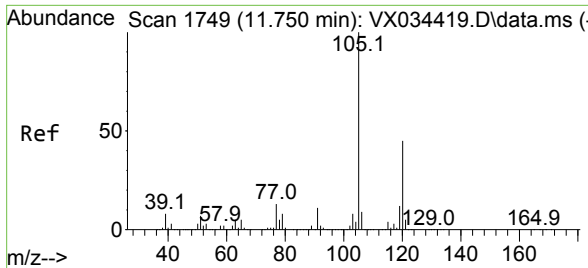
Tgt Ion: 75 Resp: 100050
 Ion Ratio Lower Upper
 75 100
 53 0.0 82.6 124.0#
 89 0.0 36.9 55.3#



#83
 tert-Butylbenzene
 Concen: 0.784 ug/l
 RT: 11.750 min Scan# 1749
 Delta R.T. 0.037 min
 Lab File: VX034808.D
 Acq: 28 Mar 2023 21:05

Tgt Ion: 119 Resp: 9187
 Ion Ratio Lower Upper
 119 100
 91 97.1 30.6 92.0#
 134 0.0 11.8 35.4#

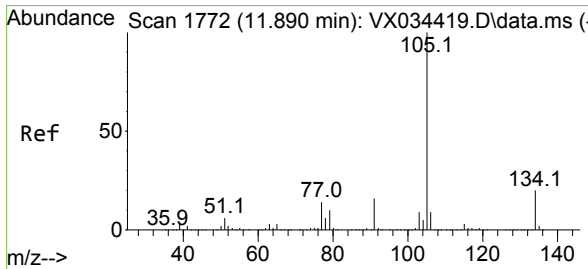
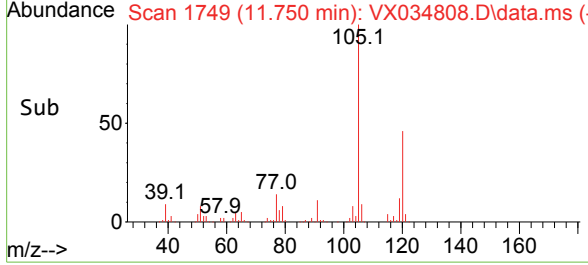
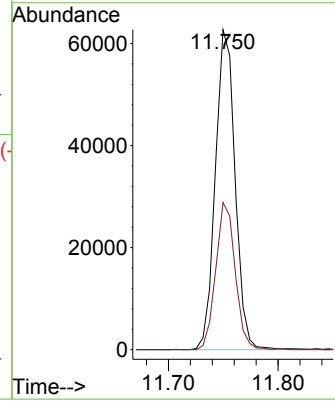
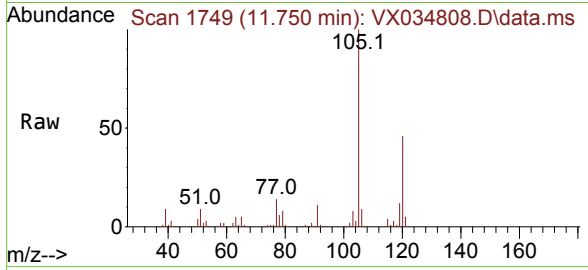




#84
 1,2,4-Trimethylbenzene
 Concen: 6.598 ug/l
 RT: 11.750 min Scan# 1749
 Delta R.T. -0.000 min
 Lab File: VX034808.D
 Acq: 28 Mar 2023 21:05

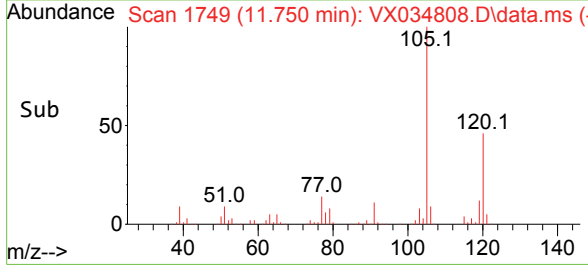
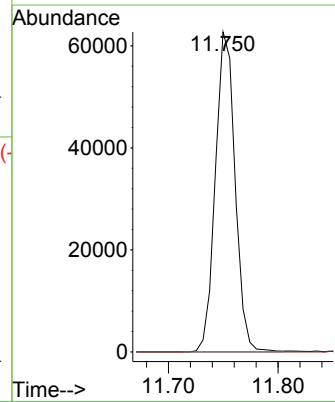
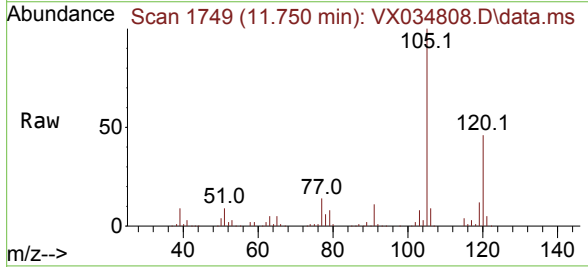
Instrument : MSVOA_X
 ClientSampleId : B-30-GW01

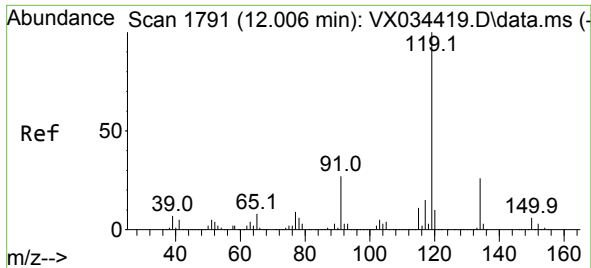
Tgt Ion:105 Resp: 78396
 Ion Ratio Lower Upper
 105 100
 120 45.4 22.4 67.0



#85
 sec-Butylbenzene
 Concen: 5.471 ug/l
 RT: 11.750 min Scan# 1749
 Delta R.T. -0.140 min
 Lab File: VX034808.D
 Acq: 28 Mar 2023 21:05

Tgt Ion:105 Resp: 78396
 Ion Ratio Lower Upper
 105 100
 134 0.0 10.2 30.4#

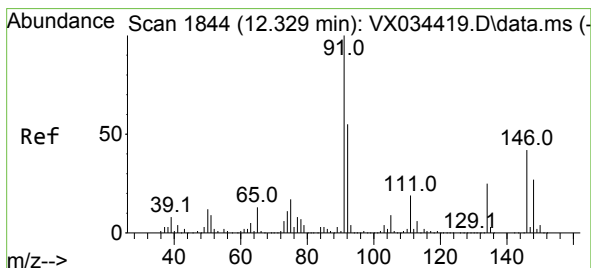
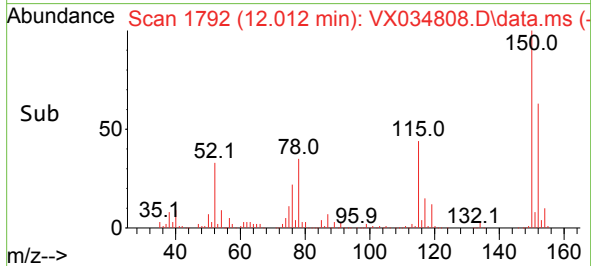
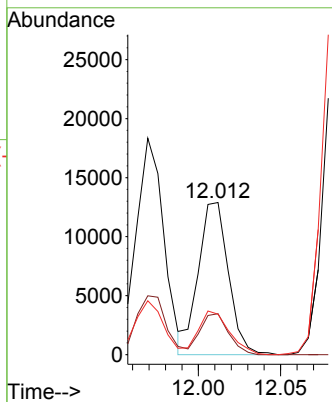
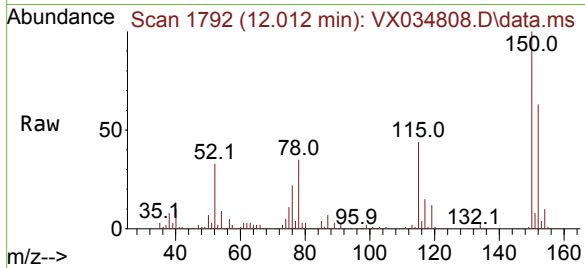




#86
 p-Isopropyltoluene
 Concen: 1.364 ug/l
 RT: 12.012 min Scan# 1792
 Delta R.T. 0.006 min
 Lab File: VX034808.D
 Acq: 28 Mar 2023 21:05

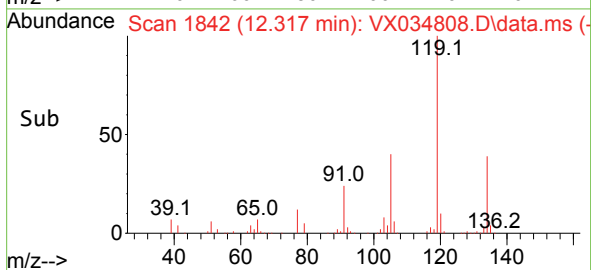
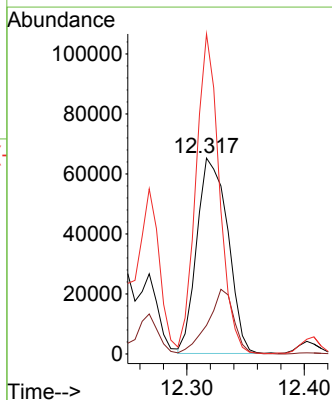
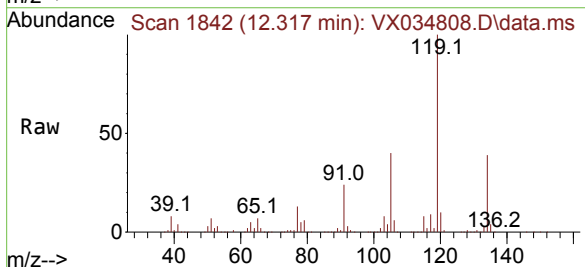
Instrument : MSVOA_X
 ClientSampleId : B-30-GW01

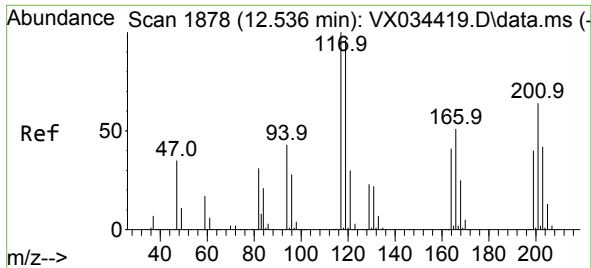
Tgt Ion	Resp	Lower	Upper
119	16423		
100			
134	25.3	13.2	39.5
91	29.9	12.9	38.7



#89
 n-Butylbenzene
 Concen: 11.181 ug/l
 RT: 12.317 min Scan# 1842
 Delta R.T. -0.012 min
 Lab File: VX034808.D
 Acq: 28 Mar 2023 21:05

Tgt Ion	Resp	Lower	Upper
91	119709		
100			
92	27.9	27.7	83.0
134	123.3	13.0	38.9#

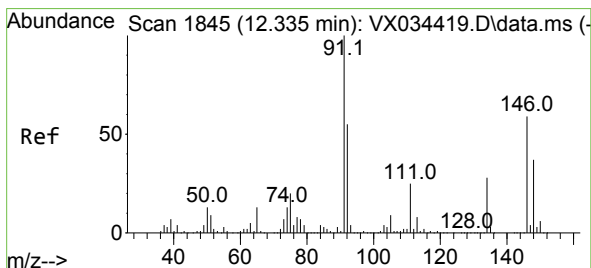
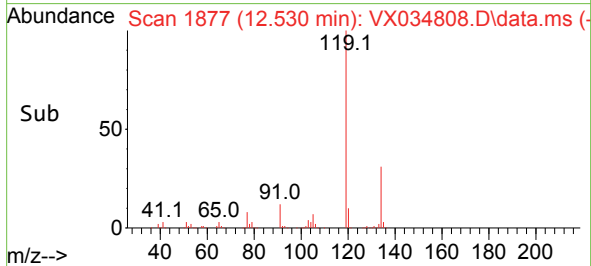
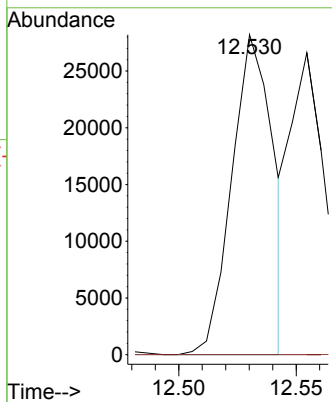
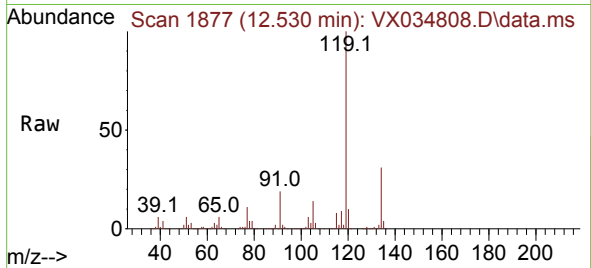




#90
 Hexachloroethane
 Concen: 15.563 ug/l
 RT: 12.530 min Scan# 117
 Delta R.T. -0.006 min
 Lab File: VX034808.D
 Acq: 28 Mar 2023 21:05

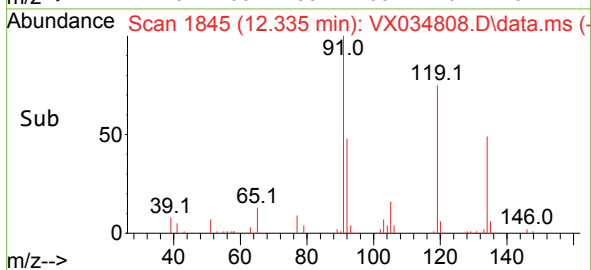
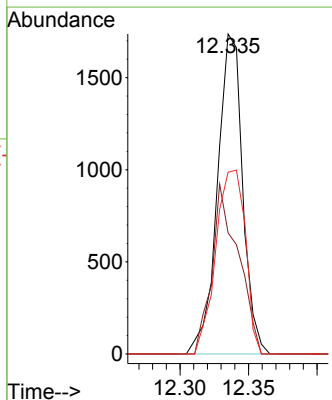
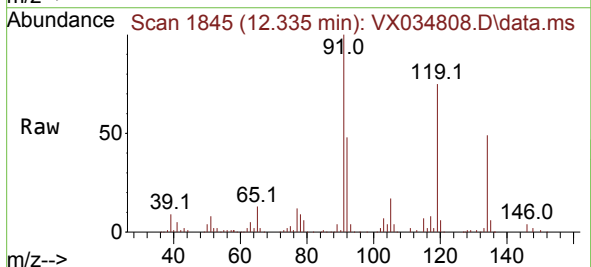
Instrument : MSVOA_X
 ClientSampleId : B-30-GW01

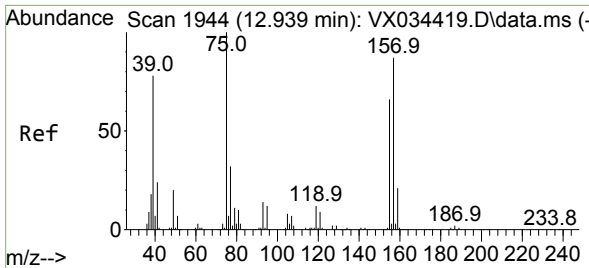
Tgt Ion:117 Resp: 34684
 Ion Ratio Lower Upper
 117 100
 201 0.0 34.4 103.1#



#91
 1,2-Dichlorobenzene
 Concen: 0.353 ug/l
 RT: 12.335 min Scan# 1845
 Delta R.T. -0.000 min
 Lab File: VX034808.D
 Acq: 28 Mar 2023 21:05

Tgt Ion:146 Resp: 2221
 Ion Ratio Lower Upper
 146 100
 111 55.2 22.0 66.0
 148 67.4 32.0 96.0

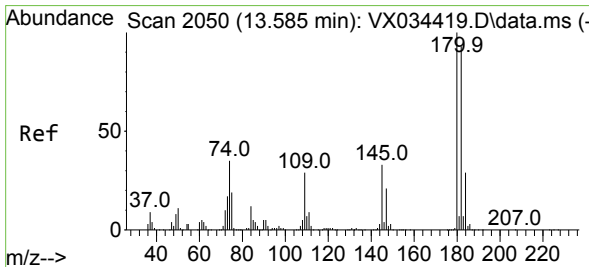
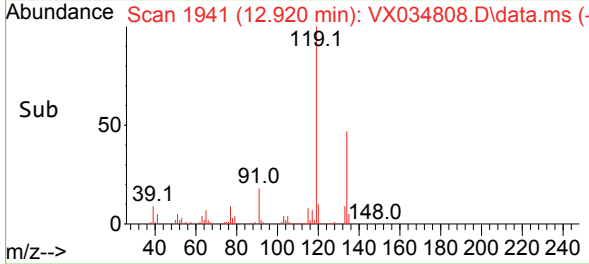
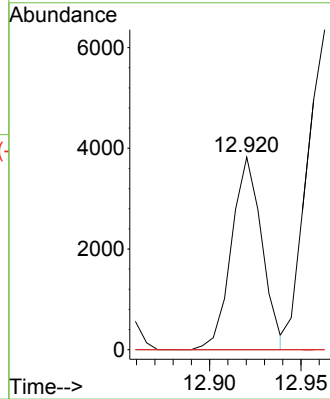
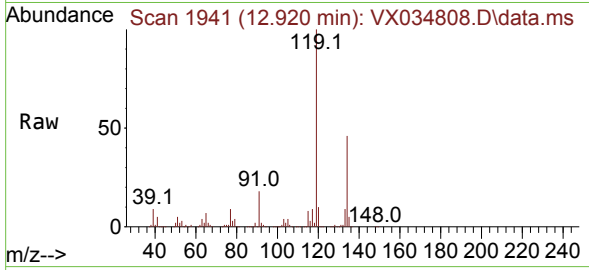




#92
 1,2-Dibromo-3-Chloropropane
 Concen: 4.221 ug/l
 RT: 12.920 min Scan# 1944
 Delta R.T. -0.018 min
 Lab File: VX034808.D
 Acq: 28 Mar 2023 21:05

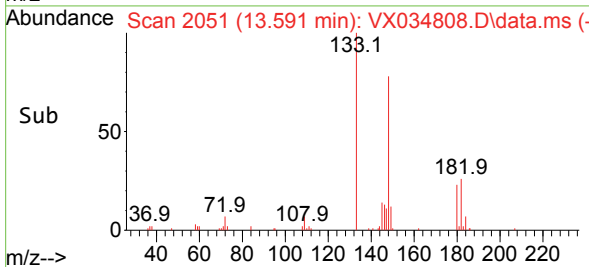
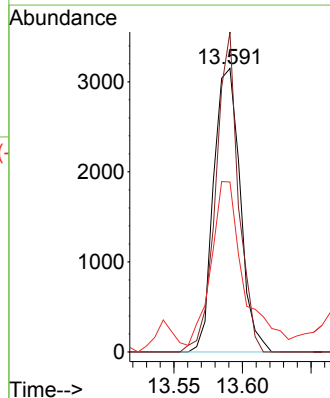
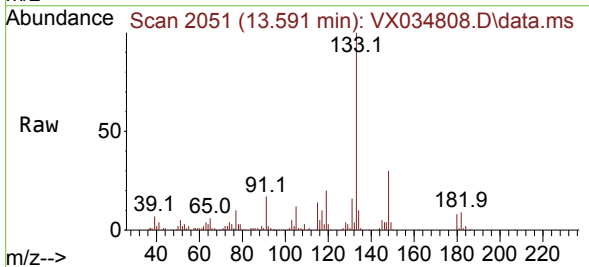
Instrument : MSVOA_X
 ClientSampleId : B-30-GW01

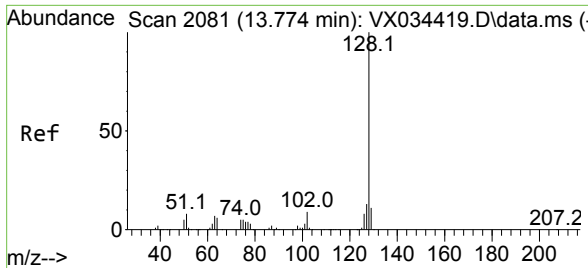
Tgt Ion: 75 Resp: 4436
 Ion Ratio Lower Upper
 75 100
 155 0.0 38.4 115.1#
 157 0.0 49.9 149.7#



#93
 1,2,4-Trichlorobenzene
 Concen: 1.079 ug/l
 RT: 13.591 min Scan# 2051
 Delta R.T. 0.006 min
 Lab File: VX034808.D
 Acq: 28 Mar 2023 21:05

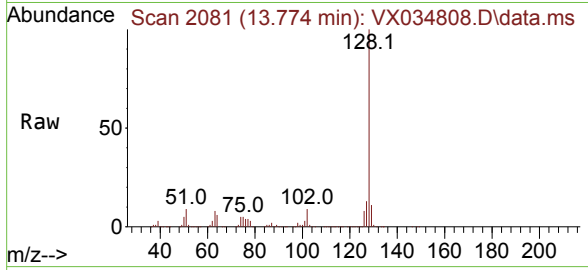
Tgt Ion: 180 Resp: 4249
 Ion Ratio Lower Upper
 180 100
 182 96.1 47.0 141.0
 145 76.2 15.9 47.7#





#95
 Naphthalene
 Concen: 56.248 ug/l
 RT: 13.774 min Scan# 20
 Delta R.T. -0.000 min
 Lab File: VX034808.D
 Acq: 28 Mar 2023 21:05

Instrument : MSVOA_X
 ClientSampleId : B-30-GW01



Tgt Ion:128 Resp: 742734

Ion	Ratio	Lower	Upper
128	100		
127	13.0	10.2	15.4
129	10.9	8.6	13.0

