

Data Path : Z:\voasrv\HPCHEM1\MSVOA_X\Data\VX032823\
 Data File : VX034796.D
 Acq On : 28 Mar 2023 16:27
 Operator : JC/MD
 Sample : 02073-01ME 100X
 Misc : 5.07g/10mL/100uL/5.00mL/MSVOA_X/MEOH
 ALS Vial : 20 Sample Multiplier: 1

Instrument :
 MSVOA_X
 ClientSampleId :
 TRE-1715MEDL

Integration Parameters: RTEINT.P

Integrator: RTE
 Smoothing : ON Filtering: 5
 Sampling : 1 Min Area: 3 % of largest Peak
 Start Thrs: 0.2 Max Peaks: 100
 Stop Thrs : 0 Peak Location: TOP

If leading or trailing edge < 100 prefer < Baseline drop else tangent >
 Peak separation: 5

Method : Z:\voasrv\HPCHEM1\MSVOA_X\Method\82X031023W.M
 Title : SW846 8260

Signal : TIC: VX034796.D\data.ms

peak #	R.T. min	first scan	max scan	last scan	PK TY	peak height	corr. area	corr. % max.	% of total
1	2.386	206	213	226	rVB	36911	69160	4.88%	0.901%
2	5.385	693	705	718	rBV	153301	450422	31.75%	5.865%
3	5.550	718	732	751	rVB	272294	786776	55.46%	10.246%
4	5.958	788	799	817	rBV	186439	494414	34.85%	6.438%
5	6.763	921	931	953	rBV	432363	1042723	73.50%	13.578%
6	8.647	1233	1240	1247	rBV	916123	1418616	100.00%	18.473%
7	8.720	1247	1252	1263	rVB	86264	144222	10.17%	1.878%
8	10.055	1465	1471	1483	rBV	872055	1224110	86.29%	15.941%
9	11.079	1634	1639	1651	rBV	740294	931495	65.66%	12.130%
10	12.024	1788	1794	1806	rBV	848268	1117293	78.76%	14.550%

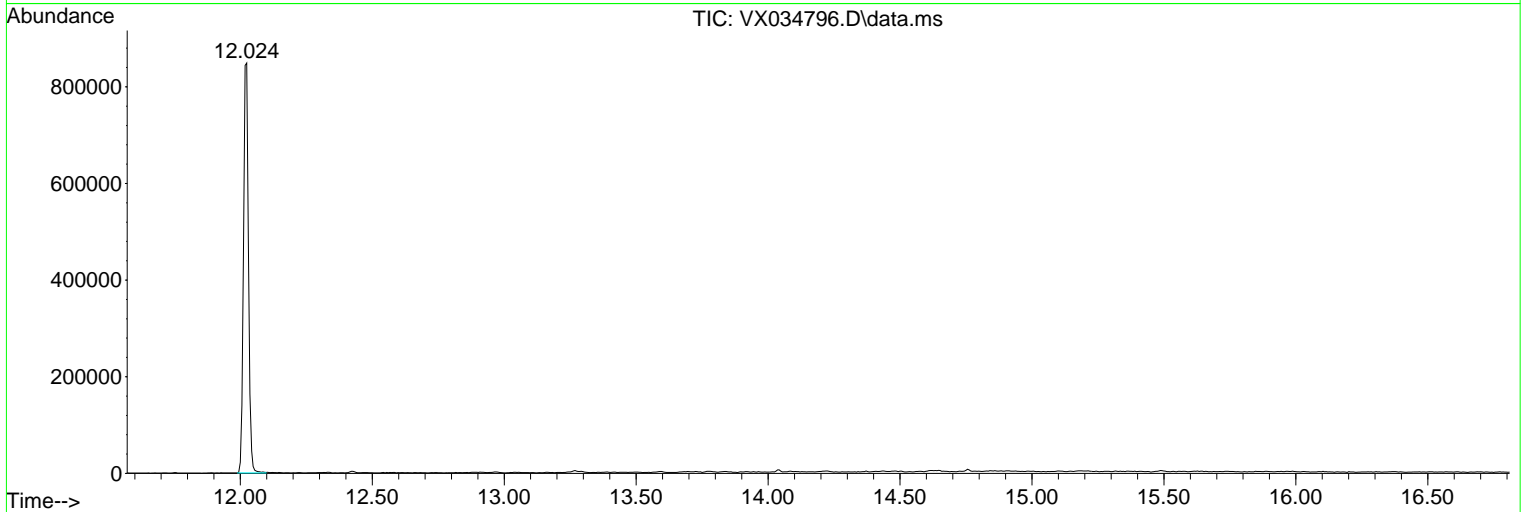
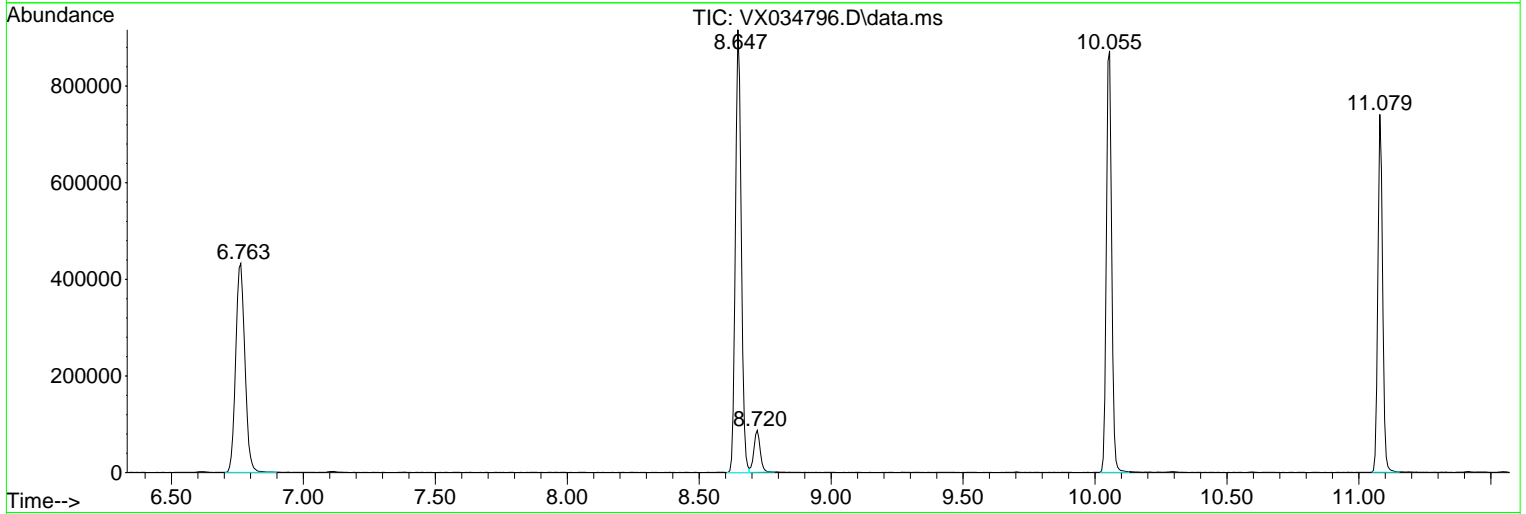
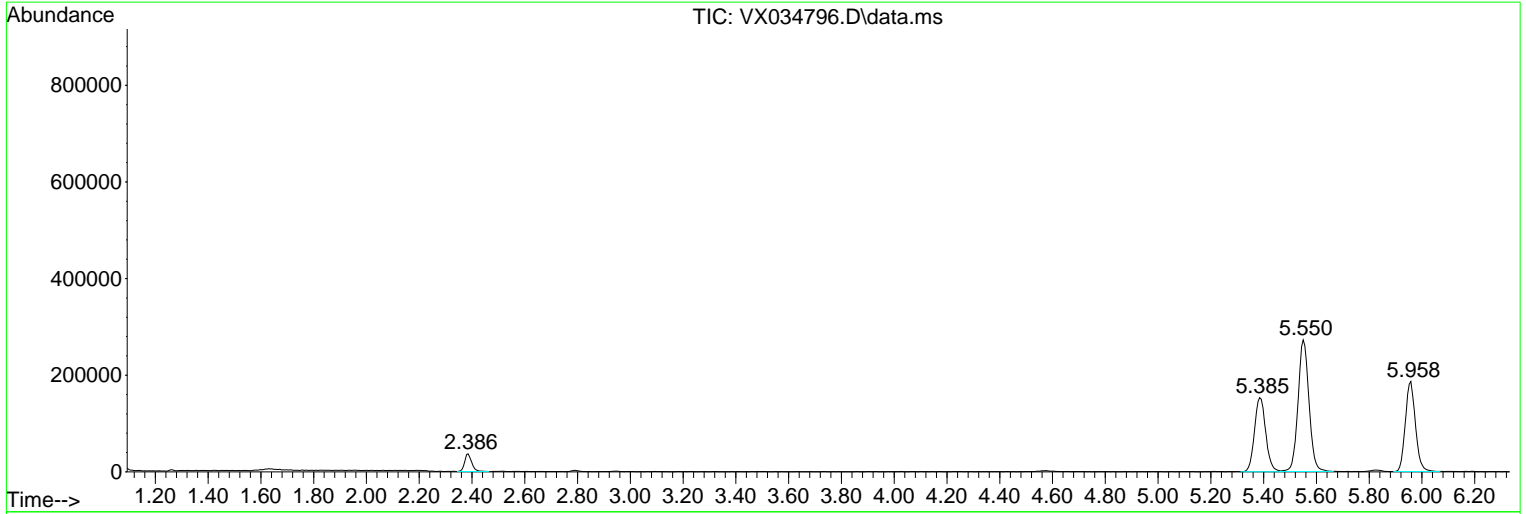
Sum of corrected areas: 7679231

Data Path : Z:\voasrv\HPCHEM1\MSVOA_X\Data\VX032823\
 Data File : VX034796.D
 Acq On : 28 Mar 2023 16:27
 Operator : JC/MD
 Sample : 02073-01ME 100X
 Misc : 5.07g/10mL/100uL/5.00mL/MSVOA_X/MEOH
 ALS Vial : 20 Sample Multiplier: 1

Instrument :
 MSVOA_X
 ClientSampleId :
 TRE-1715MEDL

Quant Method : Z:\voasrv\HPCHEM1\MSVOA_X\Method\82X031023W.M
 Quant Title : SW846 8260

TIC Library : C:\Database\NIST20.L
 TIC Integration Parameters: LSCINT.P



Library Search Compound Report

Data Path : Z:\voasrv\HPCHEM1\MSVOA_X\Data\VX032823\
Data File : VX034796.D
Acq On : 28 Mar 2023 16:27
Operator : JC/MD
Sample : 02073-01ME 100X
Misc : 5.07g/10mL/100uL/5.00mL/MSVOA_X/MEOH
ALS Vial : 20 Sample Multiplier: 1

Instrument :
MSVOA_X
ClientSampleId :
TRE-1715MEDL

Quant Method : Z:\voasrv\HPCHEM1\MSVOA_X\Method\82X031023W.M
Quant Title : SW846 8260

TIC Library : C:\Database\NIST20.L
TIC Integration Parameters: LSCINT.P

No Library Search Compounds Detected

Data Path : Z:\voasrv\HPCHEM1\MSVOA_X\Data\VX032823\
Data File : VX034796.D
Acq On : 28 Mar 2023 16:27
Operator : JC/MD
Sample : 02073-01ME 100X
Misc : 5.07g/10mL/100uL/5.00mL/MSVOA_X/MEOH
ALS Vial : 20 Sample Multiplier: 1

Instrument :
MSVOA_X
ClientSampleId :
TRE-1715MEDL

Quant Method : Z:\voasrv\HPCHEM1\MSVOA_X\Method\82X031023W.M
Quant Title : SW846 8260

TIC Library : C:\Database\NIST20.L
TIC Integration Parameters: LSCINT.P

TIC Top Hit name	RT	EstConc	Units	Response	--Internal Standard--			
					#	RT	Resp	Conc
