

Data Path : Z:\voasrv\HPCHEM1\MSVOA_X\Data\VX032921\
 Data File : VX021610.D
 Acq On : 30 Mar 2021 04:58
 Operator : JC/MD
 Sample : M1843-15
 Misc : 5.0mL/MSVOA_X/WATER
 ALS Vial : 50 Sample Multiplier: 1

Instrument :
 MSVOA_X
 ClientSampled :

Quant Time: Mar 30 05:25:14 2021
 Quant Method : Z:\voasrv\HPCHEM1\MSVOA_X\Method\82X032421W.M
 Quant Title : SW846 8260
 QLast Update : Wed Mar 24 12:25:26 2021
 Response via : Initial Calibration

Compound	R.T.	QIon	Response	Conc	Units	Dev(Min)

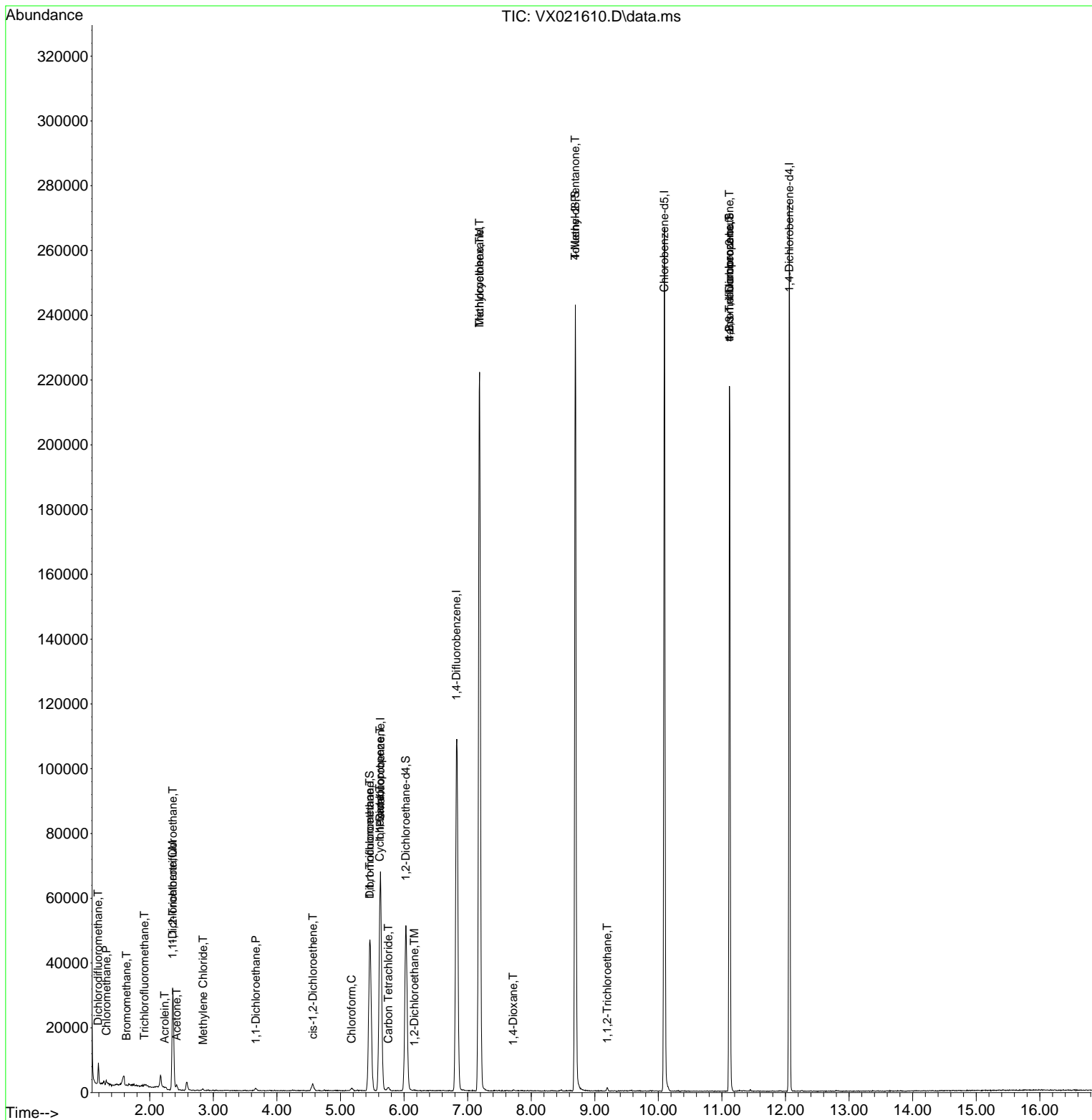
Internal Standards						
1) Pentafluorobenzene	5.629	168	57212	50.00	ug/l	0.00
34) 1,4-Difluorobenzene	6.823	114	105970	50.00	ug/l	0.00
63) Chlorobenzene-d5	10.094	117	113027	50.00	ug/l	0.00
72) 1,4-Dichlorobenzene-d4	12.059	152	51139	50.00	ug/l	0.00
System Monitoring Compounds						
33) 1,2-Dichloroethane-d4	6.029	65	50659	53.22	ug/l	0.00
Spiked Amount	50.000	Range 78 - 117	Recovery	=	106.44%	
35) Dibromofluoromethane	5.458	113	38130	50.66	ug/l	0.00
Spiked Amount	50.000	Range 75 - 124	Recovery	=	101.32%	
50) Toluene-d8	8.694	98	137395	51.22	ug/l	0.00
Spiked Amount	50.000	Range 92 - 112	Recovery	=	102.44%	
62) 4-Bromofluorobenzene	11.118	95	55686	53.40	ug/l	0.00
Spiked Amount	50.000	Range 83 - 123	Recovery	=	106.80%	
Target Compounds						
						Qvalue
2) Dichlorodifluoromethane	1.187	85	575	0.91	ug/l	97
3) Chloromethane	1.317	50	1593	2.24	ug/l	93
5) Bromomethane	1.634	94	66	0.25	ug/l	82
7) Trichlorofluoromethane	1.917	101	361	0.35	ug/l	91
9) 1,1,2-Trichlorotrifluo...	2.364	101	10800	18.34	ug/l	96
12) 1,1-Dichloroethene	2.358	96	823	1.43	ug/l	96
13) Acrolein	2.234	56	20	4.55	ug/l #	76
16) Acetone	2.423	43	1513	4.20	ug/l	92
20) Methylene Chloride	2.840	84	186	0.26	ug/l #	77
24) 1,1-Dichloroethane	3.670	63	953	0.78	ug/l #	81
27) cis-1,2-Dichloroethene	4.564	96	1313	1.79	ug/l	89
30) Chloroform	5.176	83	820	0.63	ug/l	100
31) Cyclohexane	5.617	56	1612	1.54	ug/l #	50
32) 1,1,1-Trichloroethane	5.458	97	481	0.42	ug/l #	40
36) 1,1-Dichloropropene	5.623	75	5215	5.02	ug/l #	49
38) Carbon Tetrachloride	5.752	117	798	0.72	ug/l #	82
39) Methylcyclohexane	7.188	83	1070	0.93	ug/l #	1
42) 1,2-Dichloroethane	6.164	62	437	0.34	ug/l #	73
44) Trichloroethene	7.188	130	78396	100.76	ug/l	97
49) 1,4-Dioxane	7.717	88	256	13.75	ug/l #	69
51) 4-Methyl-2-Pentanone	8.694	43	810	0.68	ug/l #	1
55) 1,1,2-Trichloroethane	9.194	97	324	0.42	ug/l #	84
76) 1,2,3-Trichloropropane	11.118	75	31394	26.37	ug/l #	39
81) trans-1,4-Dichloro-2-b...	11.118	75	31394	80.32	ug/l #	12

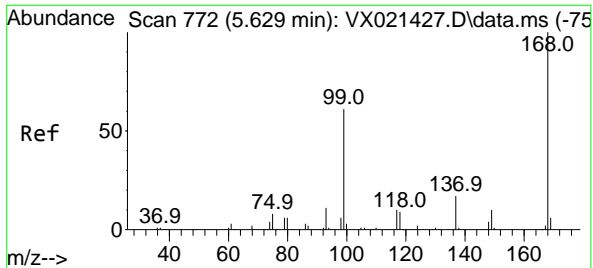
(#) = qualifier out of range (m) = manual integration (+) = signals summed

Data Path : Z:\voasrv\HPCHEM1\MSVOA_X\Data\VX032921\
 Data File : VX021610.D
 Acq On : 30 Mar 2021 04:58
 Operator : JC/MD
 Sample : M1843-15
 Misc : 5.0mL/MSVOA_X/WATER
 ALS Vial : 50 Sample Multiplier: 1

Instrument :
 MSVOA_X
 ClientSampled :

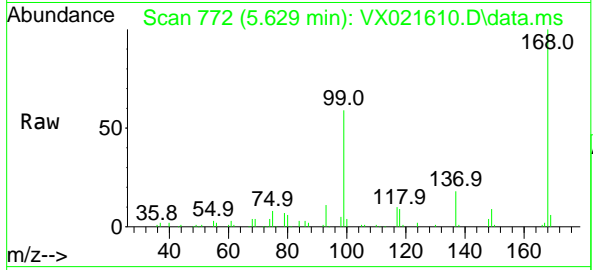
Quant Time: Mar 30 05:25:14 2021
 Quant Method : Z:\voasrv\HPCHEM1\MSVOA_X\Method\82X032421W.M
 Quant Title : SW846 8260
 QLast Update : Wed Mar 24 12:25:26 2021
 Response via : Initial Calibration



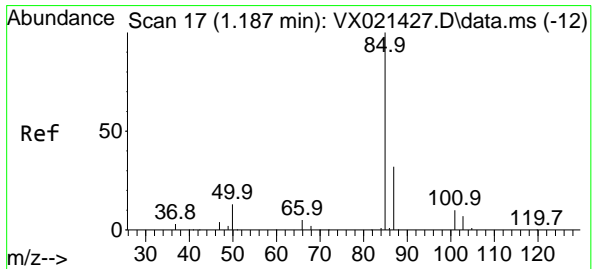
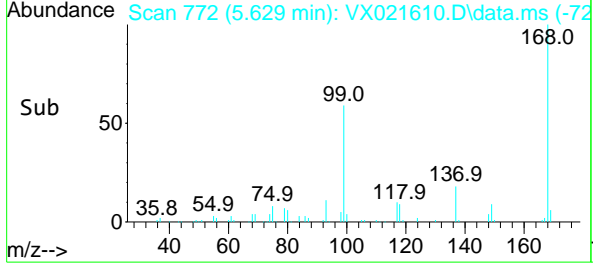
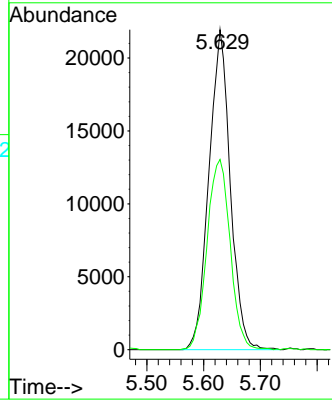


#1
 Pentafluorobenzene
 Concen: 50.00 ug/l
 RT: 5.629 min Scan# 772
 Delta R.T. -0.000 min
 Lab File: VX021610.D
 Acq: 30 Mar 2021 04:58

Instrument :
 MSVOA_X
 ClientSampled :

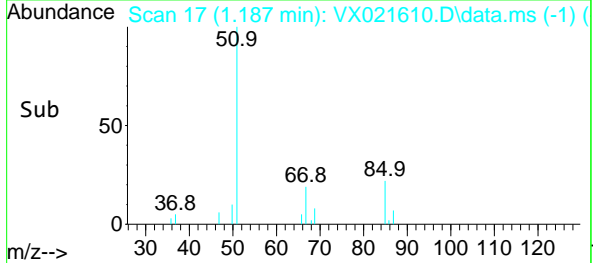
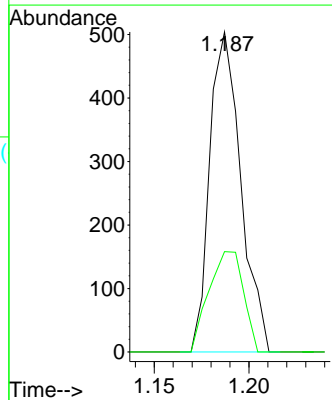
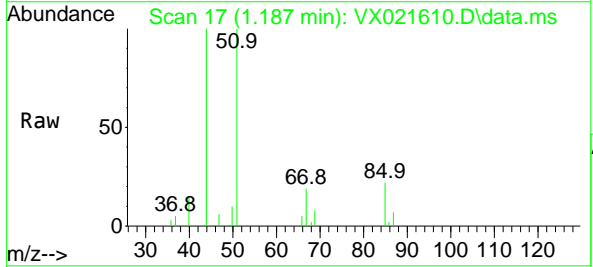


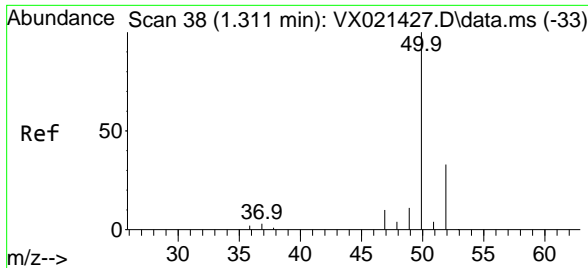
Tgt Ion:168 Resp: 57212
 Ion Ratio Lower Upper
 168 100
 99 59.5 45.8 68.6



#2
 Dichlorodifluoromethane
 Concen: 0.91 ug/l
 RT: 1.187 min Scan# 17
 Delta R.T. 0.000 min
 Lab File: VX021610.D
 Acq: 30 Mar 2021 04:58

Tgt Ion: 85 Resp: 575
 Ion Ratio Lower Upper
 85 100
 87 31.3 16.4 49.2

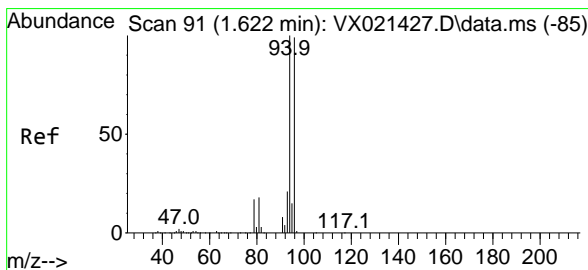
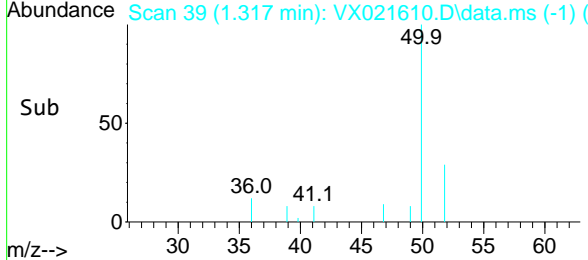
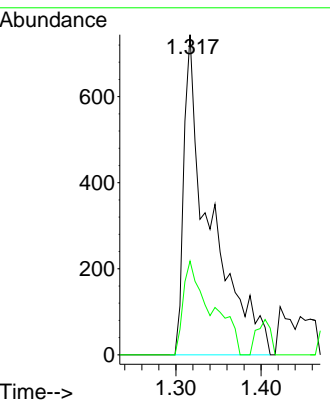
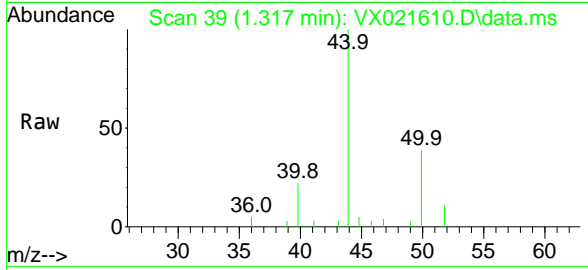




#3
 Chloromethane
 Concen: 2.24 ug/l
 RT: 1.317 min Scan# 39
 Delta R.T. 0.006 min
 Lab File: VX021610.D
 Acq: 30 Mar 2021 04:58

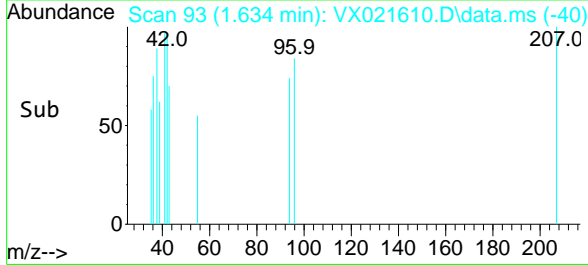
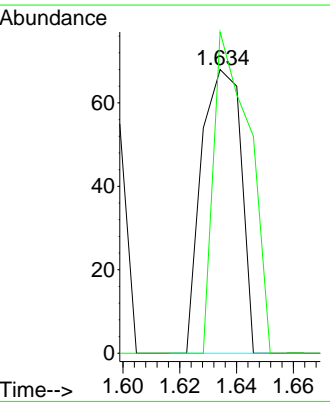
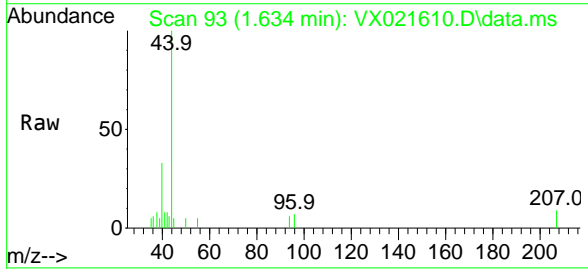
Instrument :
 MSVOA_X
 ClientSampled :

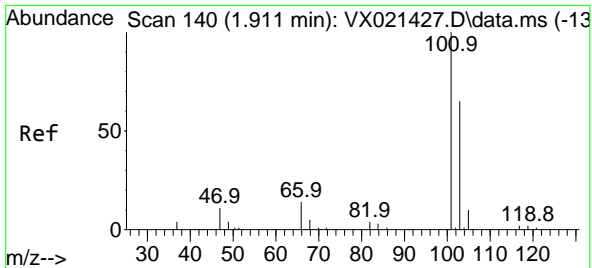
Tgt Ion: 50 Resp: 1593
 Ion Ratio Lower Upper
 50 100
 52 29.3 26.4 39.6



#5
 Bromomethane
 Concen: 0.25 ug/l
 RT: 1.634 min Scan# 93
 Delta R.T. 0.012 min
 Lab File: VX021610.D
 Acq: 30 Mar 2021 04:58

Tgt Ion: 94 Resp: 66
 Ion Ratio Lower Upper
 94 100
 96 113.2 76.4 114.6

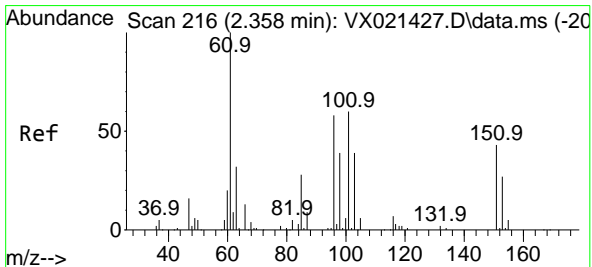
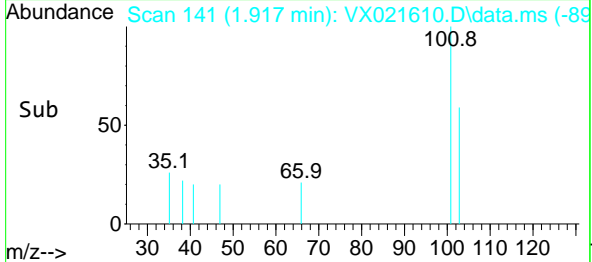
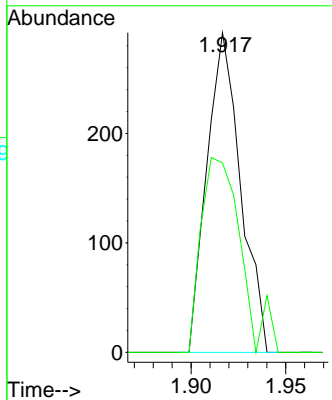
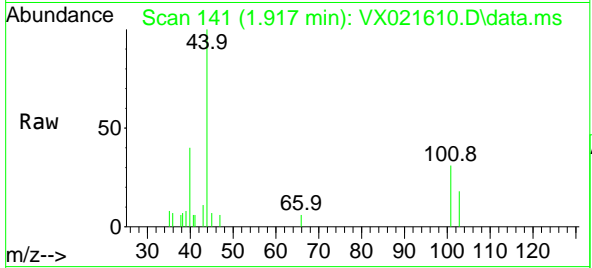




#7
 Trichlorofluoromethane
 Concen: 0.35 ug/l
 RT: 1.917 min Scan# 141
 Delta R.T. 0.006 min
 Lab File: VX021610.D
 Acq: 30 Mar 2021 04:58

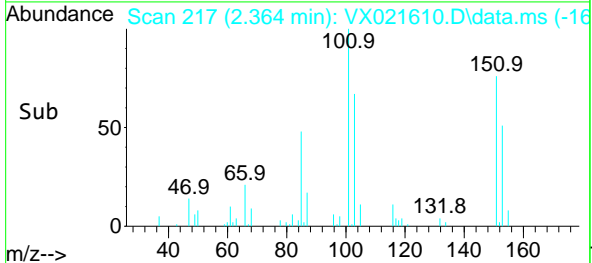
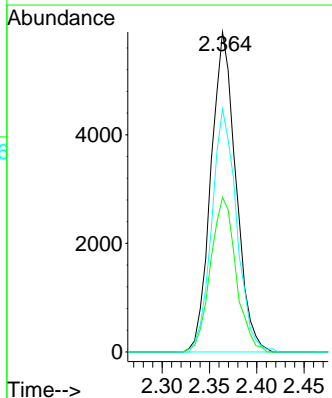
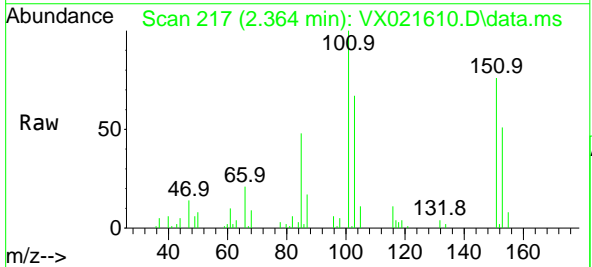
Instrument :
 MSVOA_X
 ClientSampleId :

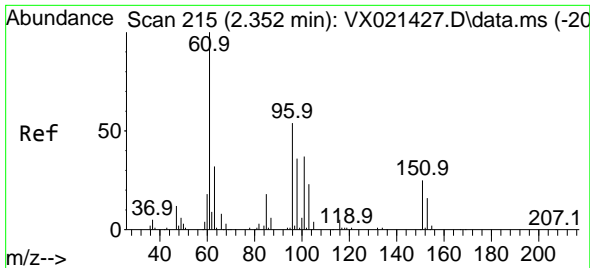
Tgt Ion:101 Resp: 361
 Ion Ratio Lower Upper
 101 100
 103 59.2 53.2 79.8



#9
 1,1,2-Trichlorotrifluoroethane
 Concen: 18.34 ug/l
 RT: 2.364 min Scan# 217
 Delta R.T. 0.006 min
 Lab File: VX021610.D
 Acq: 30 Mar 2021 04:58

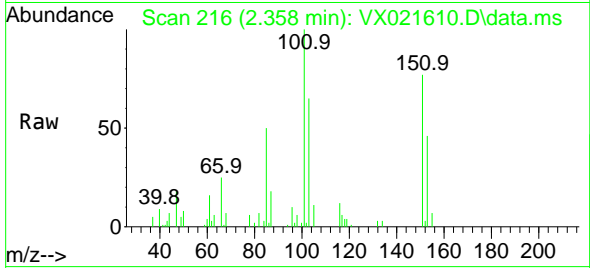
Tgt Ion:101 Resp: 10800
 Ion Ratio Lower Upper
 101 100
 85 49.3 34.9 52.3
 151 75.7 61.4 92.2



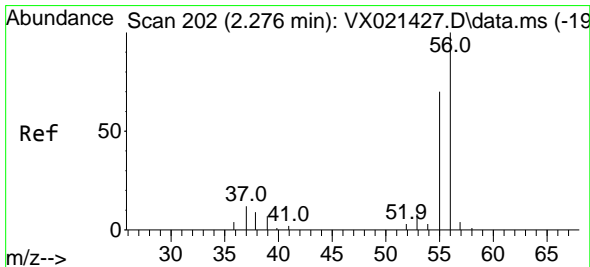
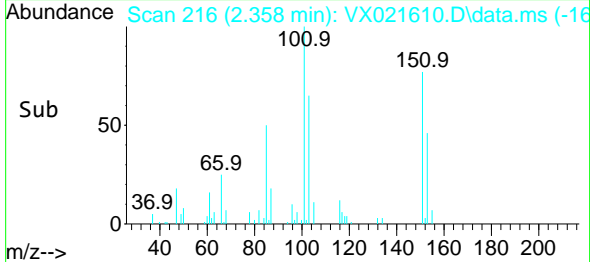
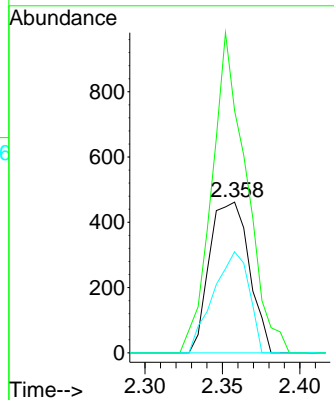


#12
 1,1-Dichloroethene
 Concen: 1.43 ug/l
 RT: 2.358 min Scan# 216
 Delta R.T. 0.006 min
 Lab File: VX021610.D
 Acq: 30 Mar 2021 04:58

Instrument :
 MSVOA_X
 ClientSampled :

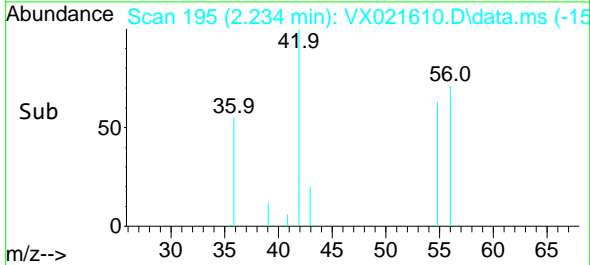
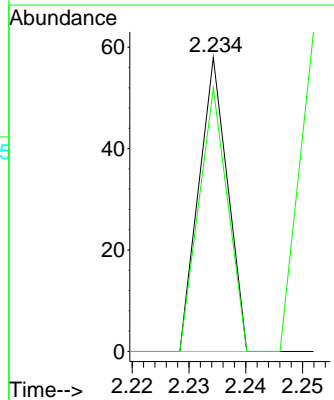
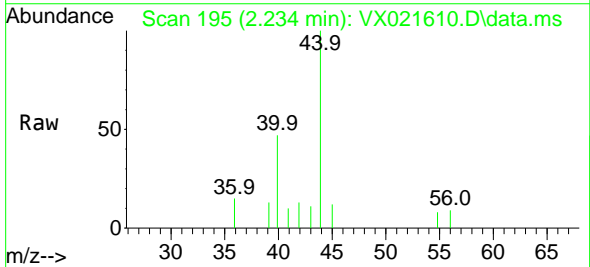


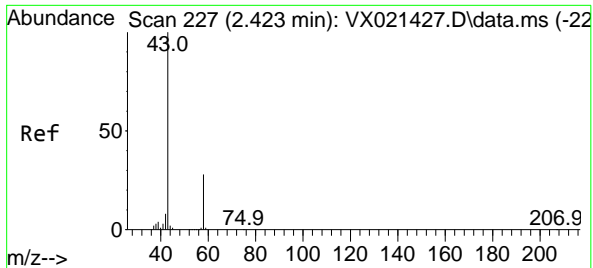
Tgt Ion: 96 Resp: 823
 Ion Ratio Lower Upper
 96 100
 61 160.6 124.6 187.0
 98 67.1 50.6 76.0



#13
 Acrolein
 Concen: 4.55 ug/l
 RT: 2.234 min Scan# 195
 Delta R.T. -0.042 min
 Lab File: VX021610.D
 Acq: 30 Mar 2021 04:58

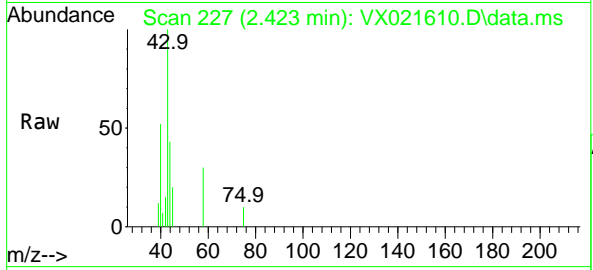
Tgt Ion: 56 Resp: 20
 Ion Ratio Lower Upper
 56 100
 55 90.0 56.4 84.6#



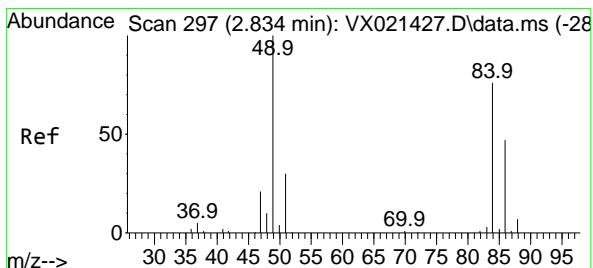
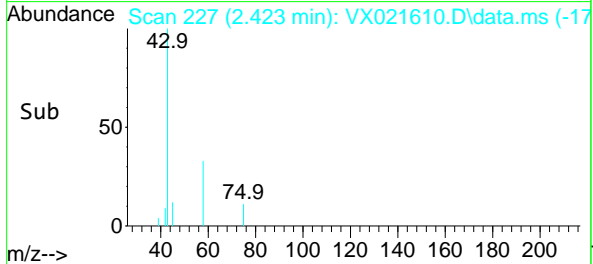
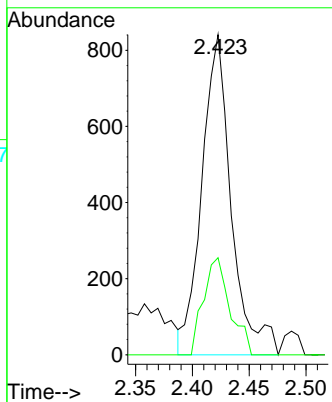


#16
 Acetone
 Concen: 4.20 ug/l
 RT: 2.423 min Scan# 227
 Delta R.T. -0.000 min
 Lab File: VX021610.D
 Acq: 30 Mar 2021 04:58

Instrument :
 MSVOA_X
 ClientSampled :

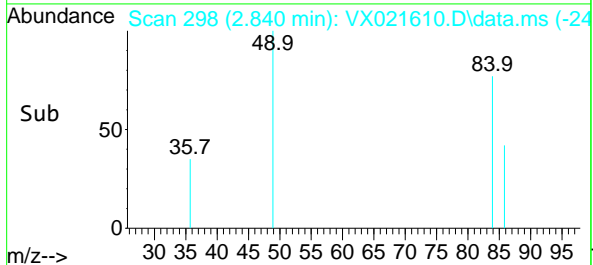
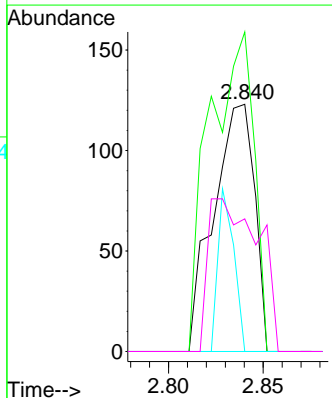
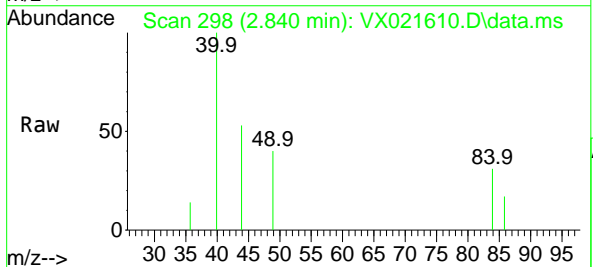


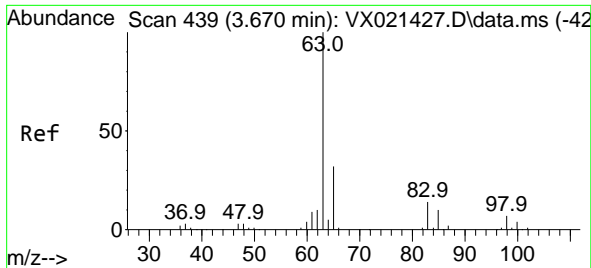
Tgt Ion: 43 Resp: 1513
 Ion Ratio Lower Upper
 43 100
 58 30.3 27.8 41.8



#20
 Methylene Chloride
 Concen: 0.26 ug/l
 RT: 2.840 min Scan# 298
 Delta R.T. 0.006 min
 Lab File: VX021610.D
 Acq: 30 Mar 2021 04:58

Tgt Ion: 84 Resp: 186
 Ion Ratio Lower Upper
 84 100
 49 129.3 88.6 132.8
 51 0.0 27.0 40.6#
 86 53.7 50.3 75.5

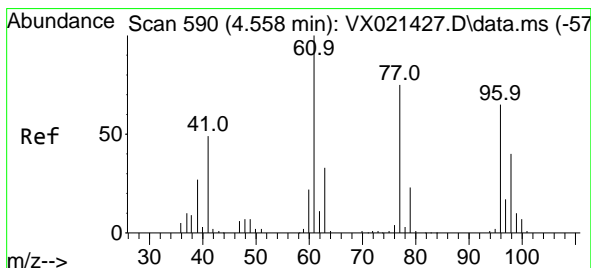
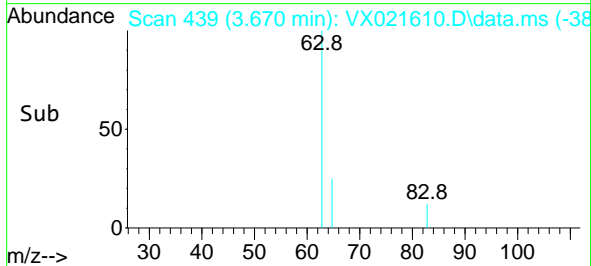
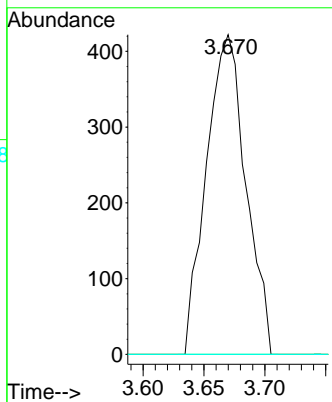
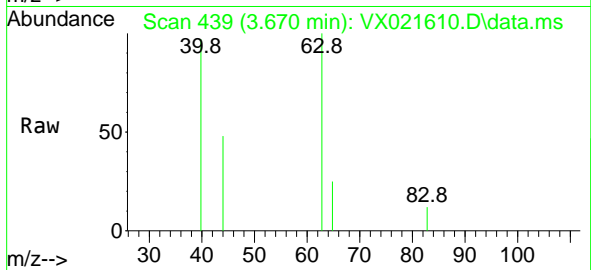




#24
 1,1-Dichloroethane
 Concen: 0.78 ug/l
 RT: 3.670 min Scan# 439
 Delta R.T. -0.000 min
 Lab File: VX021610.D
 Acq: 30 Mar 2021 04:58

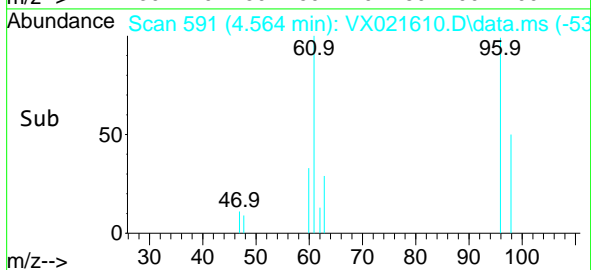
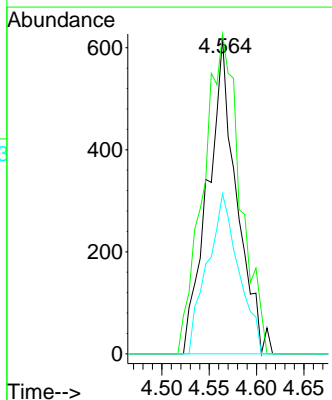
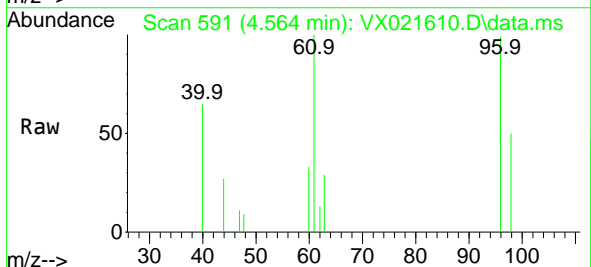
Instrument :
 MSVOA_X
 ClientSampled :

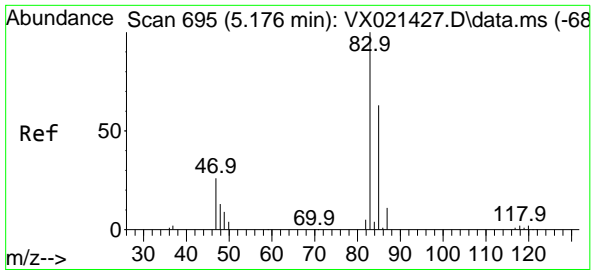
Tgt Ion	Resp	Lower	Upper
63	100		
98	0.0	3.8	11.2#
100	0.0	2.5	7.5#



#27
 cis-1,2-Dichloroethene
 Concen: 1.79 ug/l
 RT: 4.564 min Scan# 591
 Delta R.T. 0.006 min
 Lab File: VX021610.D
 Acq: 30 Mar 2021 04:58

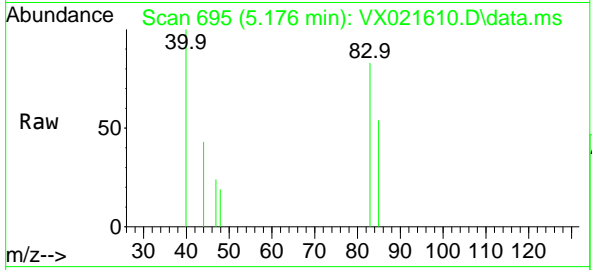
Tgt Ion	Resp	Lower	Upper
96	100		
61	129.2	0.0	285.6
98	54.9	0.0	129.6



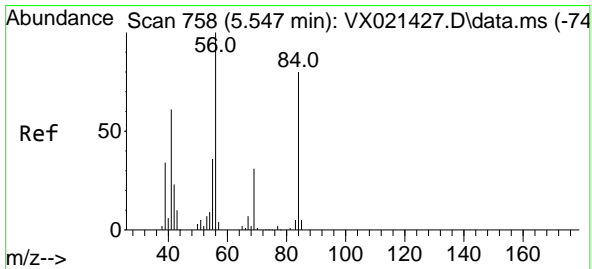
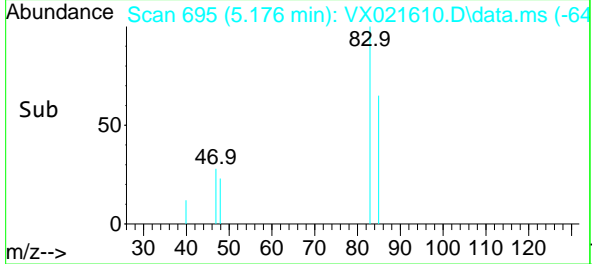
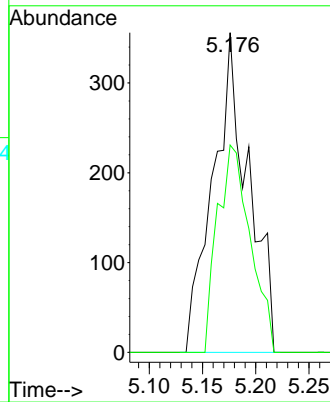


#30
 Chloroform
 Concen: 0.63 ug/l
 RT: 5.176 min Scan# 695
 Delta R.T. -0.000 min
 Lab File: VX021610.D
 Acq: 30 Mar 2021 04:58

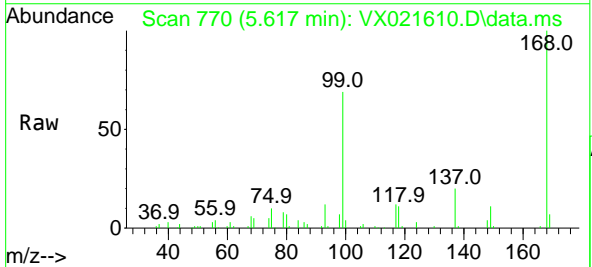
Instrument :
 MSVOA_X
 ClientSampled :



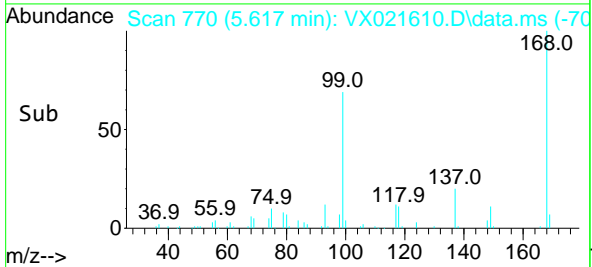
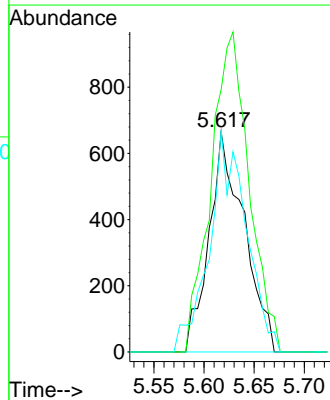
Tgt Ion: 83 Resp: 820
 Ion Ratio Lower Upper
 83 100
 85 64.9 52.0 78.0

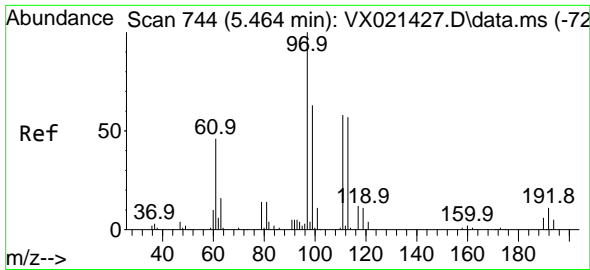


#31
 Cyclohexane
 Concen: 1.54 ug/l
 RT: 5.617 min Scan# 770
 Delta R.T. 0.070 min
 Lab File: VX021610.D
 Acq: 30 Mar 2021 04:58



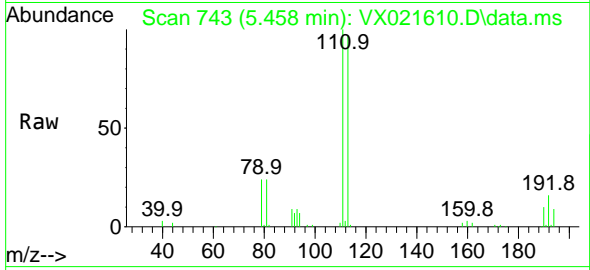
Tgt Ion: 56 Resp: 1612
 Ion Ratio Lower Upper
 56 100
 69 119.1 25.3 37.9#
 84 100.6 71.4 107.0



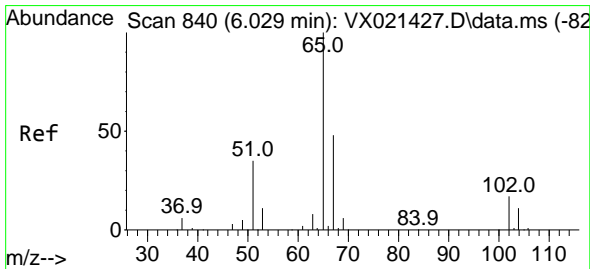
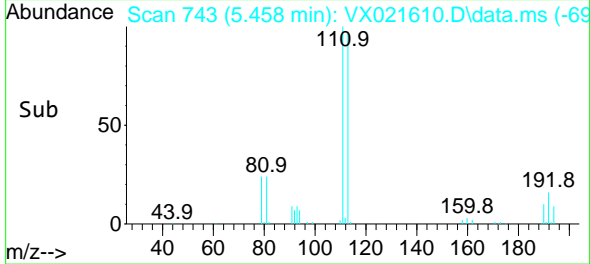
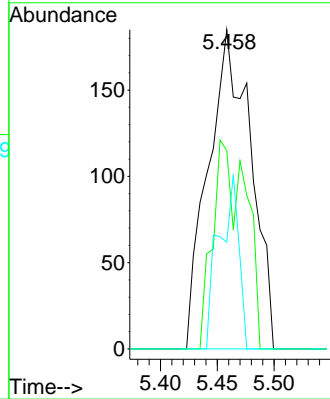


#32
 1,1,1-Trichloroethane
 Concen: 0.42 ug/l
 RT: 5.458 min Scan# 743
 Delta R.T. -0.006 min
 Lab File: VX021610.D
 Acq: 30 Mar 2021 04:58

Instrument :
 MSVOA_X
 ClientSampled :

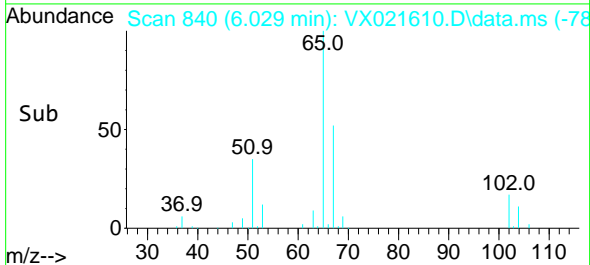
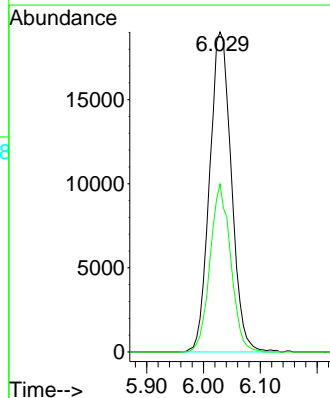
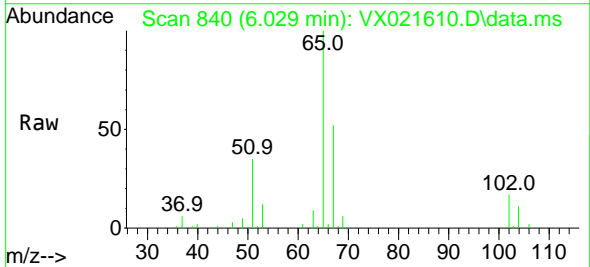


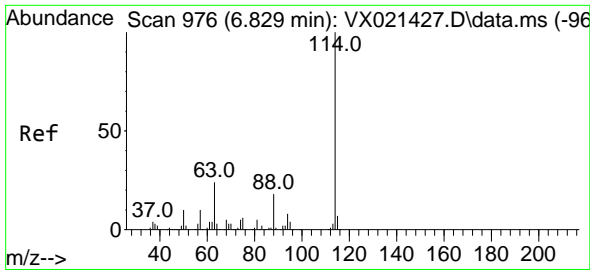
Tgt Ion: 97 Resp: 481
 Ion Ratio Lower Upper
 97 100
 99 0.0 51.5 77.3#
 61 25.4 34.2 51.4#



#33
 1,2-Dichloroethane-d4
 Concen: 53.22 ug/l
 RT: 6.029 min Scan# 840
 Delta R.T. -0.000 min
 Lab File: VX021610.D
 Acq: 30 Mar 2021 04:58

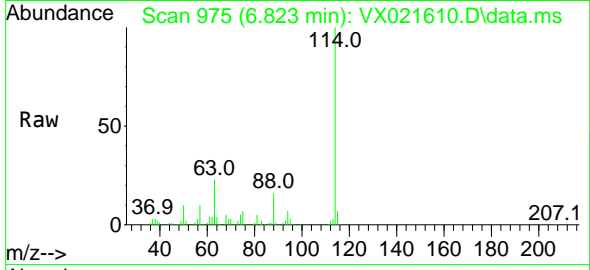
Tgt Ion: 65 Resp: 50659
 Ion Ratio Lower Upper
 65 100
 67 49.6 0.0 105.4



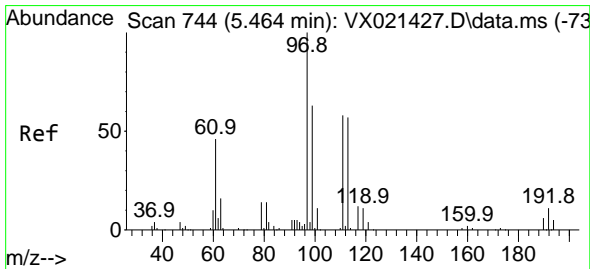
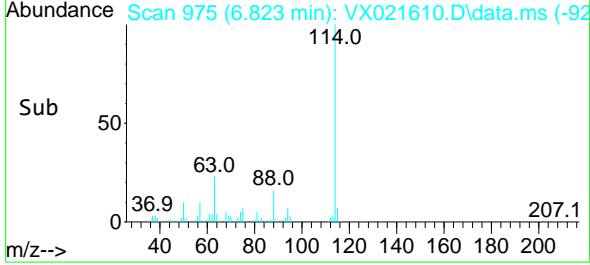
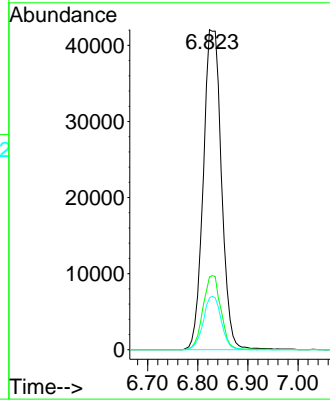


#34
 1,4-Difluorobenzene
 Concen: 50.00 ug/l
 RT: 6.823 min Scan# 975
 Delta R.T. -0.006 min
 Lab File: VX021610.D
 Acq: 30 Mar 2021 04:58

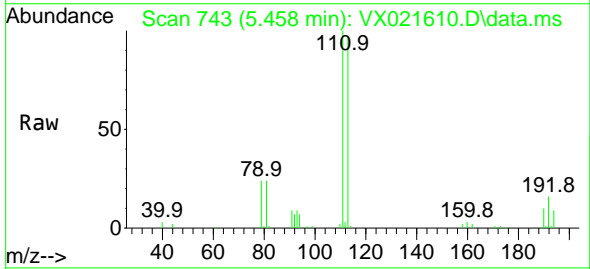
Instrument :
 MSVOA_X
 ClientSampleId :



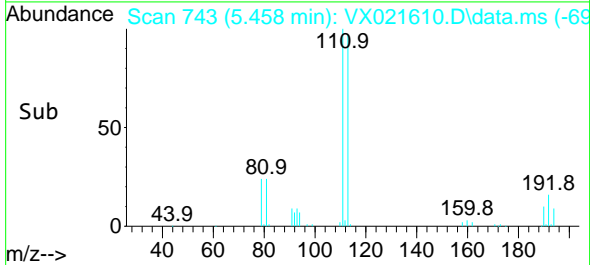
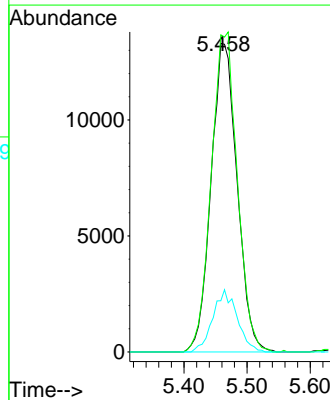
Tgt Ion:114 Resp: 105970
 Ion Ratio Lower Upper
 114 100
 63 22.8 0.0 40.8
 88 16.1 0.0 32.8

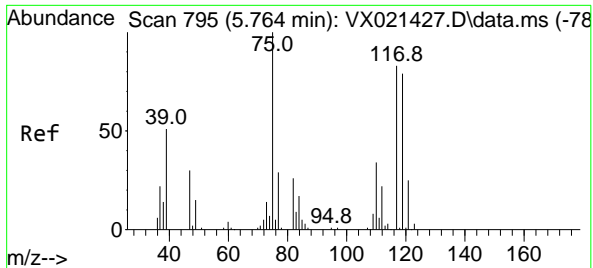


#35
 Dibromofluoromethane
 Concen: 50.66 ug/l
 RT: 5.458 min Scan# 743
 Delta R.T. -0.006 min
 Lab File: VX021610.D
 Acq: 30 Mar 2021 04:58



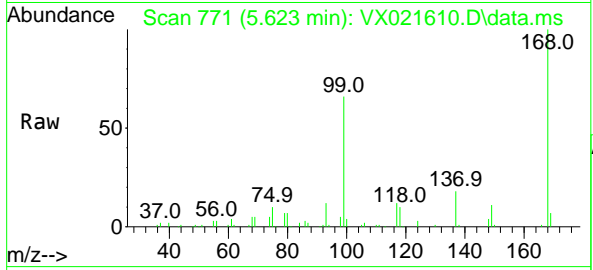
Tgt Ion:113 Resp: 38130
 Ion Ratio Lower Upper
 113 100
 111 103.7 81.9 122.9
 192 18.8 16.7 25.1





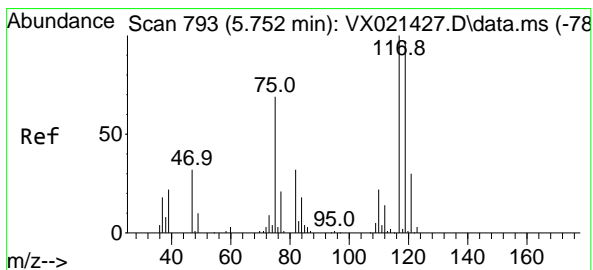
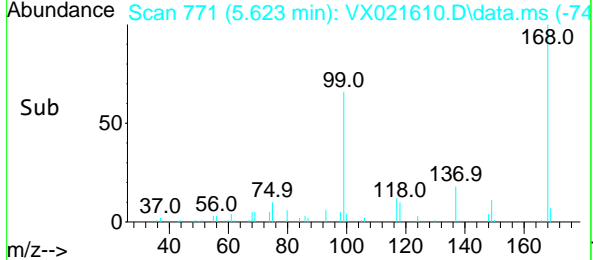
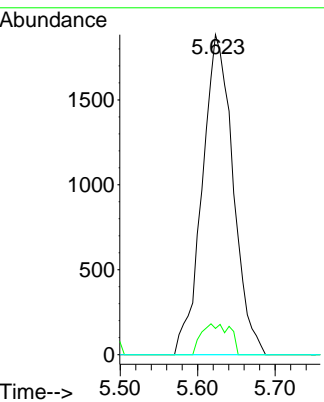
#36
 1,1-Dichloropropene
 Concen: 5.02 ug/l
 RT: 5.623 min Scan# 771
 Delta R.T. -0.141 min
 Lab File: VX021610.D
 Acq: 30 Mar 2021 04:58

Instrument :
 MSVOA_X
 ClientSampled :

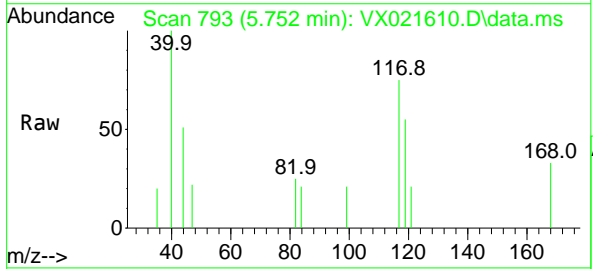


Tgt Ion: 75 Resp: 5215

Ion	Ratio	Lower	Upper
75	100		
110	8.9	18.1	54.4#
77	0.0	25.3	37.9#

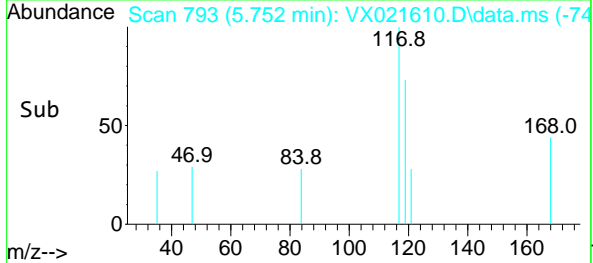
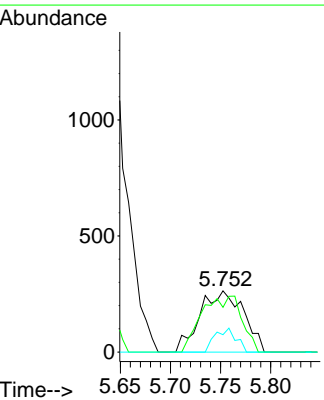


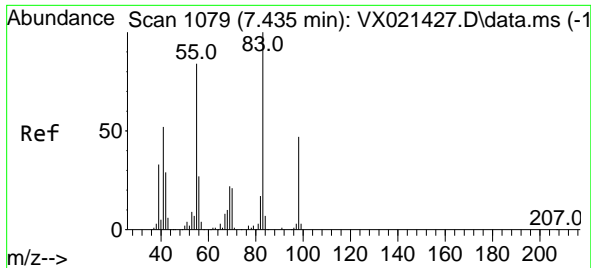
#38
 Carbon Tetrachloride
 Concen: 0.72 ug/l
 RT: 5.752 min Scan# 793
 Delta R.T. 0.000 min
 Lab File: VX021610.D
 Acq: 30 Mar 2021 04:58



Tgt Ion: 117 Resp: 798

Ion	Ratio	Lower	Upper
117	100		
119	73.1	76.2	114.2#
121	28.4	24.8	37.2

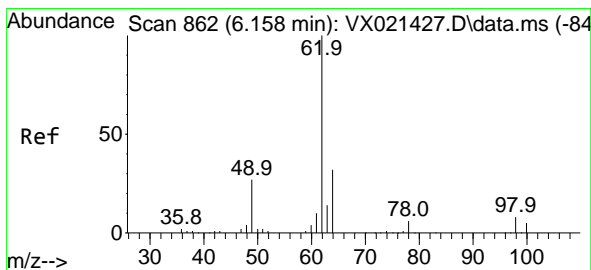
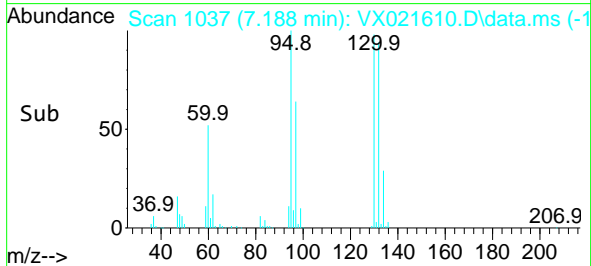
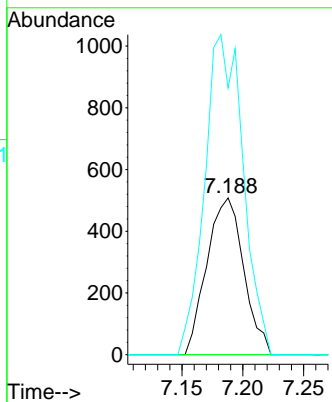
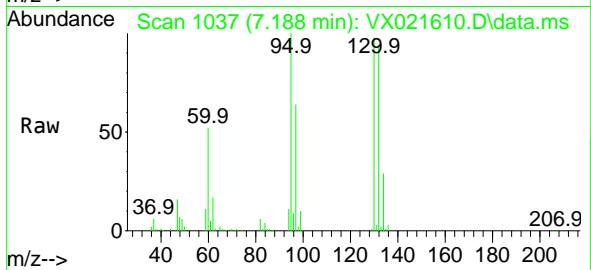




#39
 Methylcyclohexane
 Concen: 0.93 ug/l
 RT: 7.188 min Scan# 1037
 Delta R.T. -0.247 min
 Lab File: VX021610.D
 Acq: 30 Mar 2021 04:58

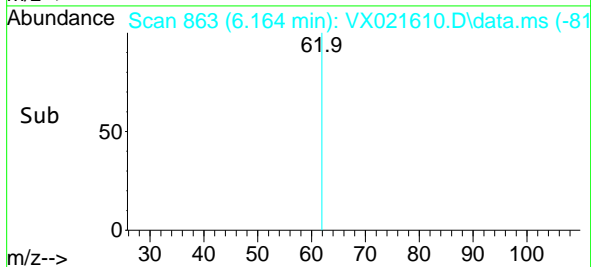
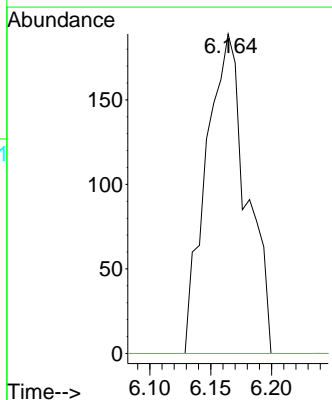
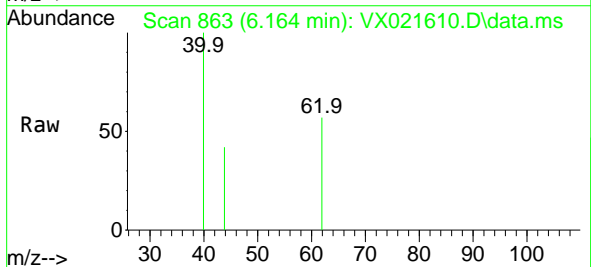
Instrument :
 MSVOA_X
 ClientSampled :

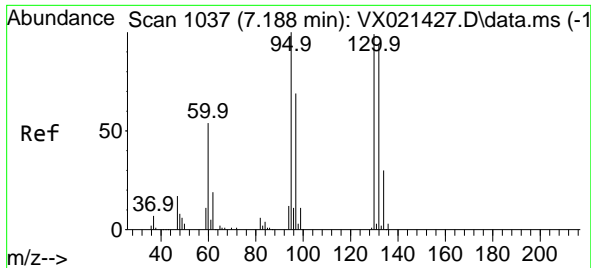
Tgt Ion	Resp	Lower	Upper
83	1070		
55	0.0	58.9	88.3#
98	170.1	38.1	57.1#



#42
 1,2-Dichloroethane
 Concen: 0.34 ug/l
 RT: 6.164 min Scan# 863
 Delta R.T. 0.006 min
 Lab File: VX021610.D
 Acq: 30 Mar 2021 04:58

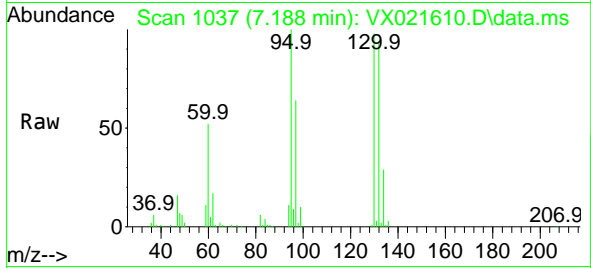
Tgt Ion	Resp	Lower	Upper
62	437		
98	0.0	0.0	20.2



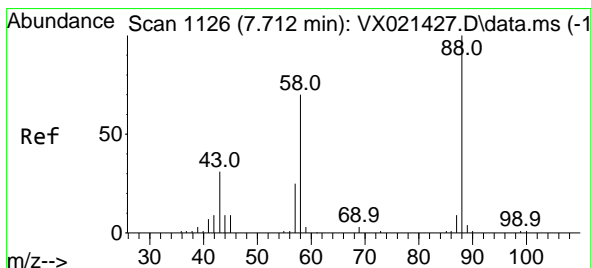
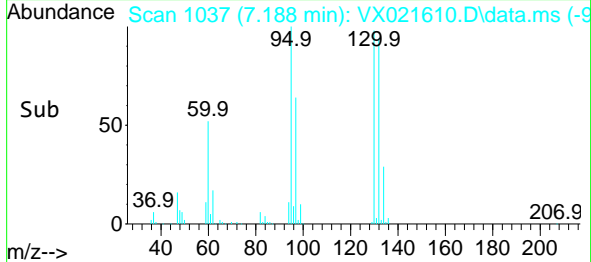
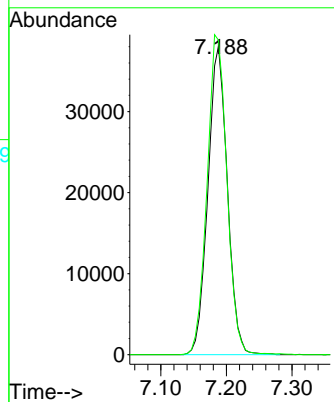


#44
 Trichloroethene
 Concen: 100.76 ug/l
 RT: 7.188 min Scan# 1037
 Delta R.T. -0.000 min
 Lab File: VX021610.D
 Acq: 30 Mar 2021 04:58

Instrument :
 MSVOA_X
 ClientSampled :

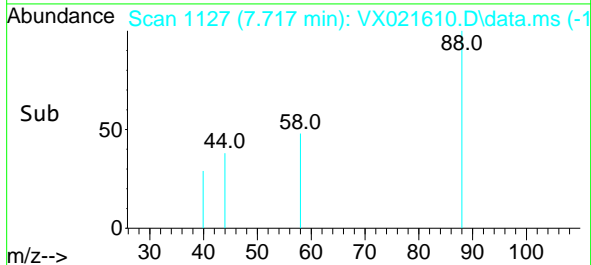
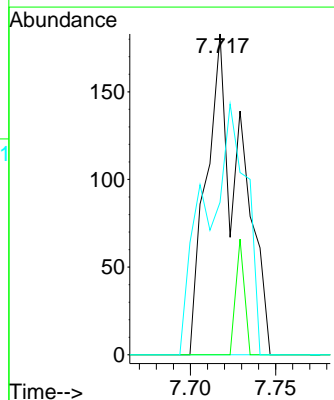
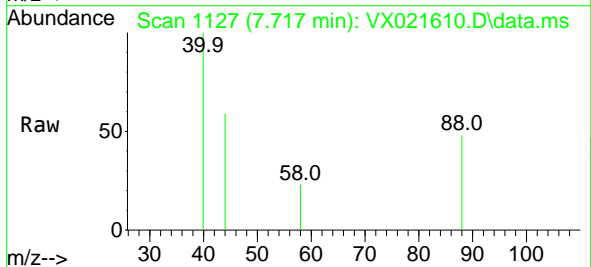


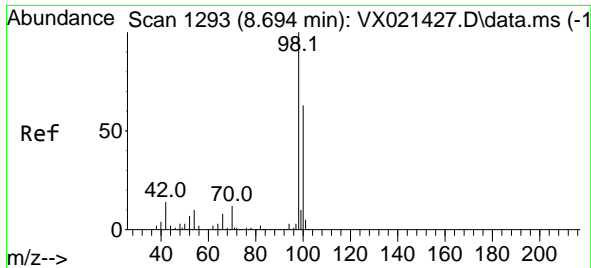
Tgt Ion:130 Resp: 78396
 Ion Ratio Lower Upper
 130 100
 95 102.0 0.0 198.0



#49
 1,4-Dioxane
 Concen: 13.75 ug/l
 RT: 7.717 min Scan# 1127
 Delta R.T. 0.005 min
 Lab File: VX021610.D
 Acq: 30 Mar 2021 04:58

Tgt Ion: 88 Resp: 256
 Ion Ratio Lower Upper
 88 100
 43 9.0 23.2 34.8#
 58 91.8 55.0 82.4#

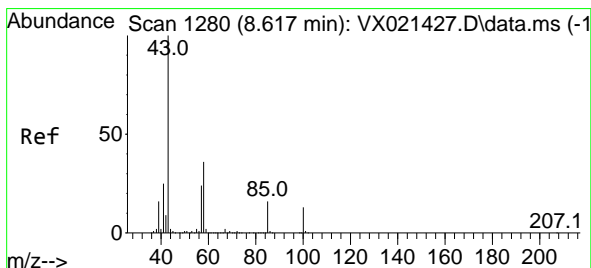
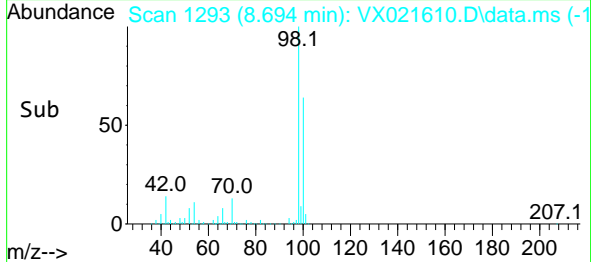
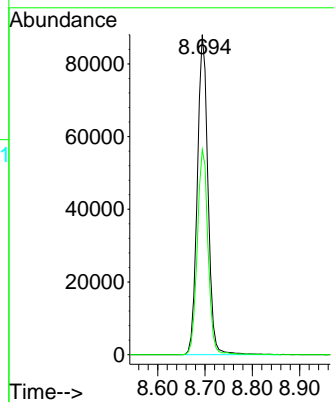
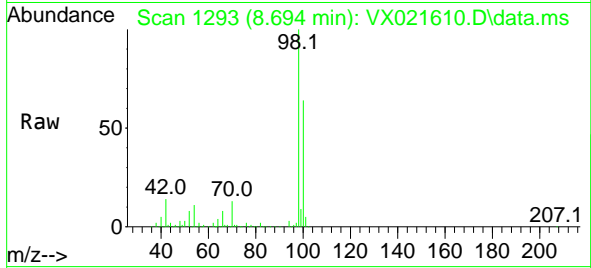




#50
 Toluene-d8
 Concen: 51.22 ug/l
 RT: 8.694 min Scan# 1293
 Delta R.T. -0.000 min
 Lab File: VX021610.D
 Acq: 30 Mar 2021 04:58

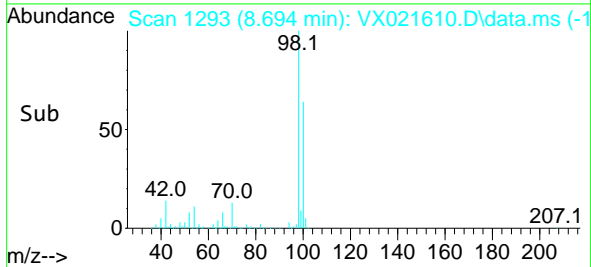
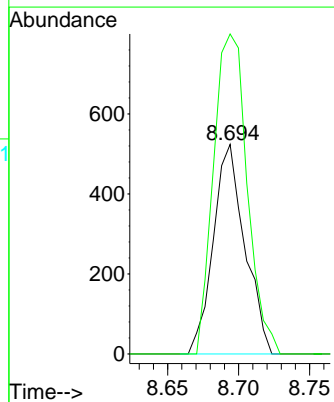
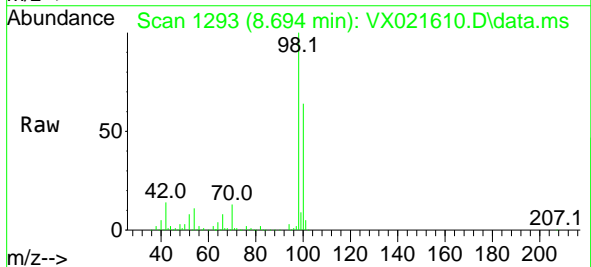
Instrument :
 MSVOA_X
 ClientSampled :

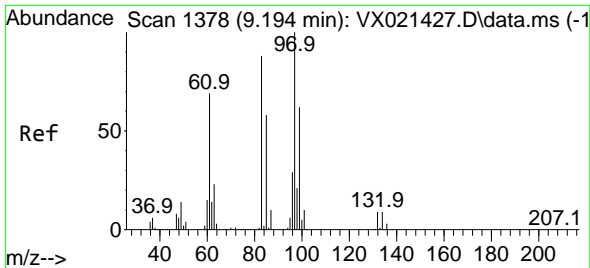
Tgt Ion: 98 Resp: 137395
 Ion Ratio Lower Upper
 98 100
 100 64.7 51.9 77.9



#51
 4-Methyl-2-Pentanone
 Concen: 0.68 ug/l
 RT: 8.694 min Scan# 1293
 Delta R.T. 0.077 min
 Lab File: VX021610.D
 Acq: 30 Mar 2021 04:58

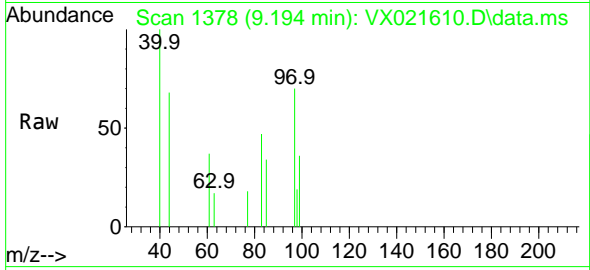
Tgt Ion: 43 Resp: 810
 Ion Ratio Lower Upper
 43 100
 58 163.0 35.4 53.0#





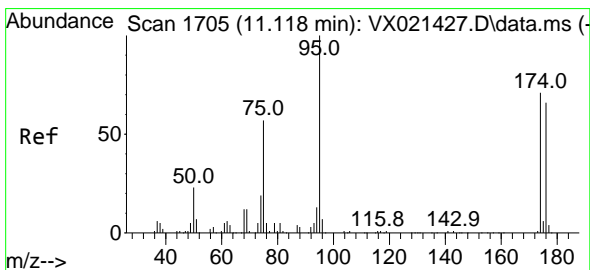
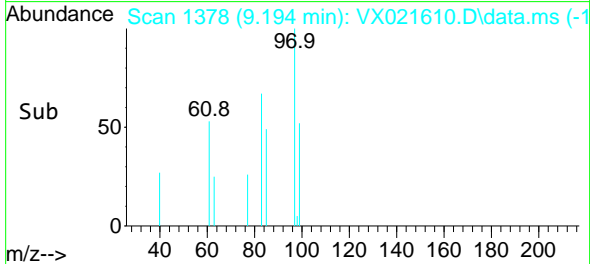
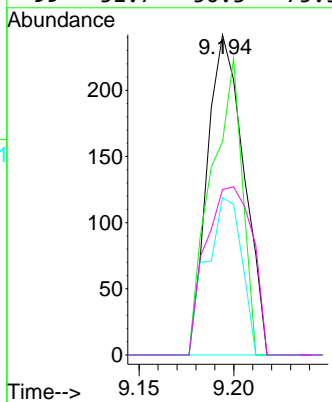
#55
 1,1,2-Trichloroethane
 Concen: 0.42 ug/l
 RT: 9.194 min Scan# 1378
 Delta R.T. 0.000 min
 Lab File: VX021610.D
 Acq: 30 Mar 2021 04:58

Instrument :
 MSVOA_X
 ClientSampled :

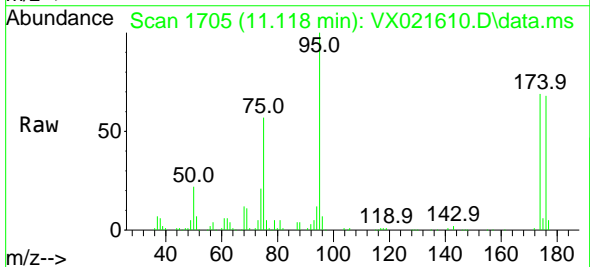


Tgt Ion: 97 Resp: 324

Ion	Ratio	Lower	Upper
97	100		
83	66.5	69.3	103.9#
85	49.2	44.3	66.5
99	51.7	50.3	75.5

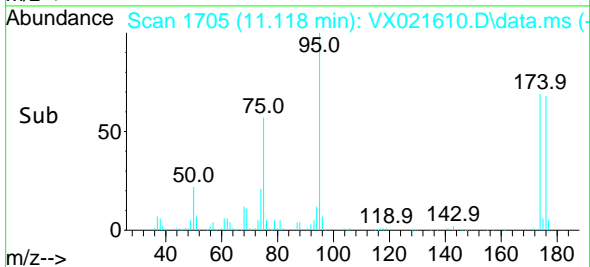
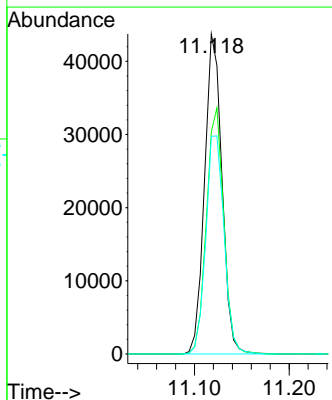


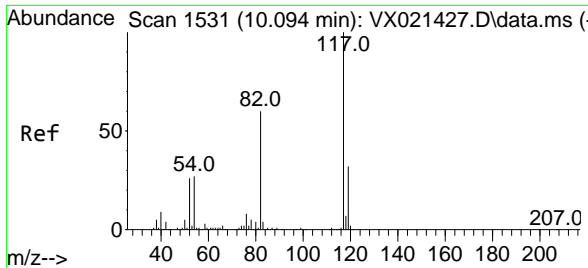
#62
 4-Bromofluorobenzene
 Concen: 53.40 ug/l
 RT: 11.118 min Scan# 1705
 Delta R.T. -0.000 min
 Lab File: VX021610.D
 Acq: 30 Mar 2021 04:58



Tgt Ion: 95 Resp: 55686

Ion	Ratio	Lower	Upper
95	100		
174	76.9	0.0	154.6
176	71.9	0.0	155.8



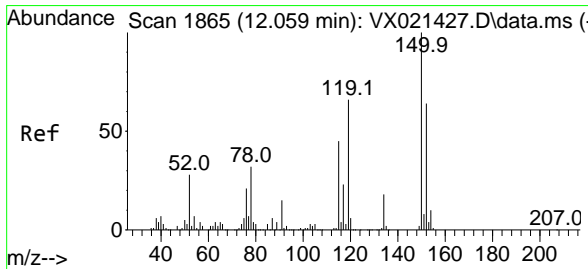
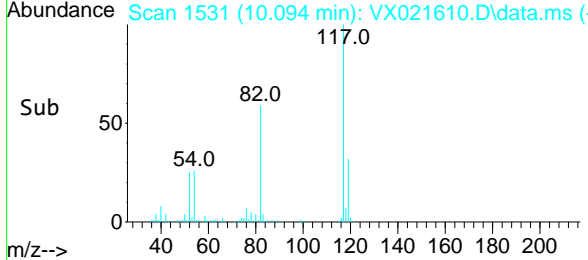
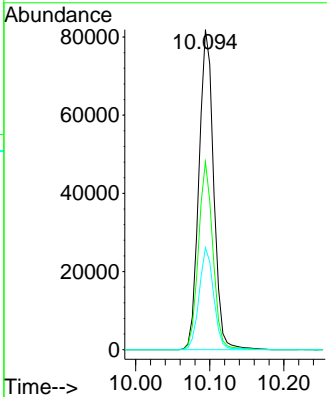
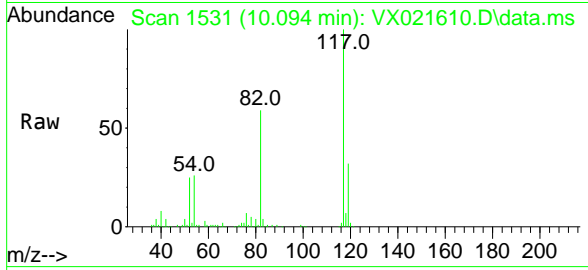


#63
 Chlorobenzene-d5
 Concen: 50.00 ug/l
 RT: 10.094 min Scan# 1531
 Delta R.T. 0.000 min
 Lab File: VX021610.D
 Acq: 30 Mar 2021 04:58

Instrument :
 MSVOA_X
 ClientSampleId :

Tgt Ion:117 Resp: 113027

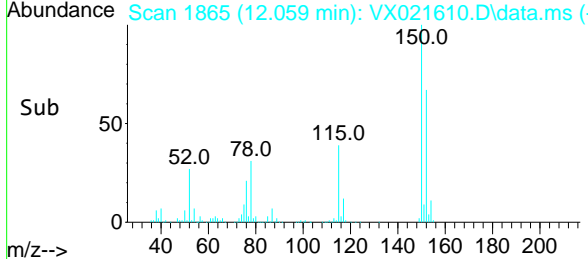
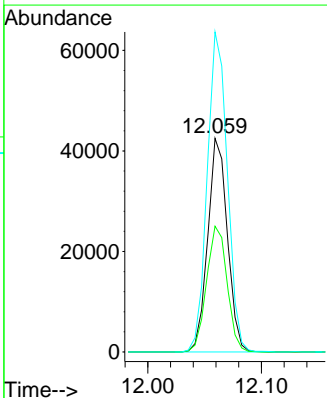
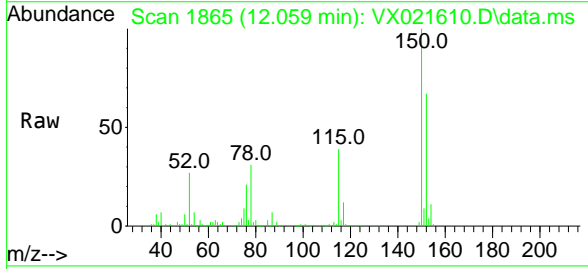
Ion	Ratio	Lower	Upper
117	100		
82	58.7	47.4	71.2
119	31.9	26.6	39.8

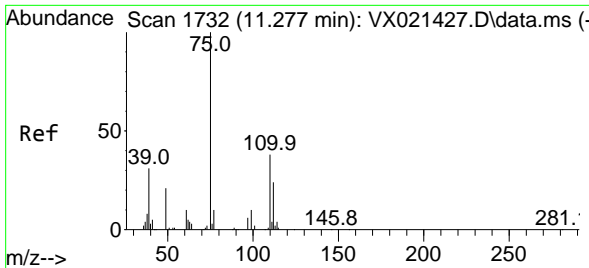


#72
 1,4-Dichlorobenzene-d4
 Concen: 50.00 ug/l
 RT: 12.059 min Scan# 1865
 Delta R.T. 0.000 min
 Lab File: VX021610.D
 Acq: 30 Mar 2021 04:58

Tgt Ion:152 Resp: 51139

Ion	Ratio	Lower	Upper
152	100		
115	61.4	41.1	123.3
150	153.3	0.0	349.0

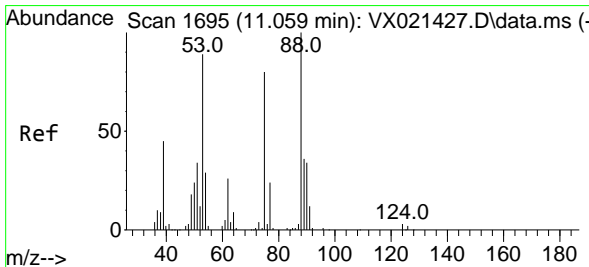
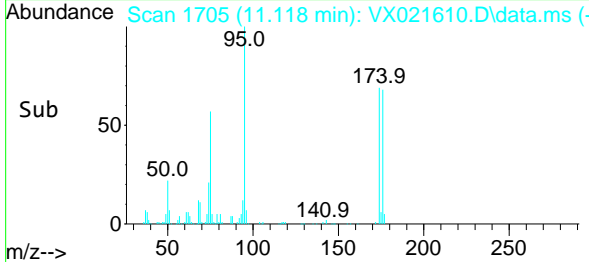
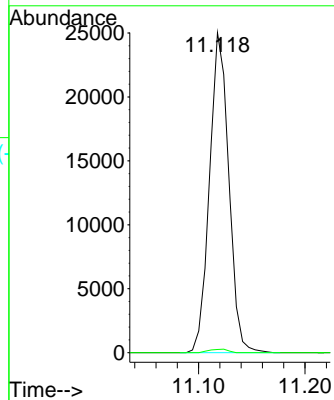
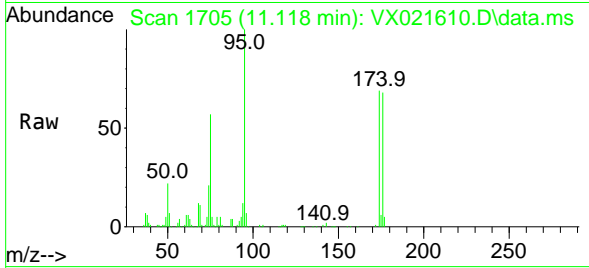




#76
 1,2,3-Trichloropropane
 Concen: 26.37 ug/l
 RT: 11.118 min Scan# 1705
 Delta R.T. -0.159 min
 Lab File: VX021610.D
 Acq: 30 Mar 2021 04:58

Instrument :
 MSVOA_X
 ClientSampled :

Tgt Ion: 75 Resp: 31394
 Ion Ratio Lower Upper
 75 100
 77 1.1 19.1 57.5#



#81
 trans-1,4-Dichloro-2-butene
 Concen: 80.32 ug/l
 RT: 11.118 min Scan# 1705
 Delta R.T. 0.059 min
 Lab File: VX021610.D
 Acq: 30 Mar 2021 04:58

Tgt Ion: 75 Resp: 31394
 Ion Ratio Lower Upper
 75 100
 53 0.0 74.5 111.7#
 89 0.0 37.9 56.9#

