

Data Path : Z:\voasrv\HPCHEM1\MSVOA_X\Data\VX033023\
 Data File : VX034852.D
 Acq On : 30 Mar 2023 15:05
 Operator : JC/MD
 Sample : 02074-01
 Misc : 5.0mL/MSVOA_X/WATER
 ALS Vial : 14 Sample Multiplier: 1

Instrument :
 MSVOA_X
 ClientSampleId :
 TB-01-032323

Quant Time: Mar 31 01:32:49 2023
 Quant Method : Z:\voasrv\HPCHEM1\MSVOA_X\Method\82X032923W.M
 Quant Title : SW846 8260
 QLast Update : Thu Mar 30 11:02:25 2023
 Response via : Initial Calibration

Compound	R.T.	QIon	Response	Conc	Units	Dev(Min)

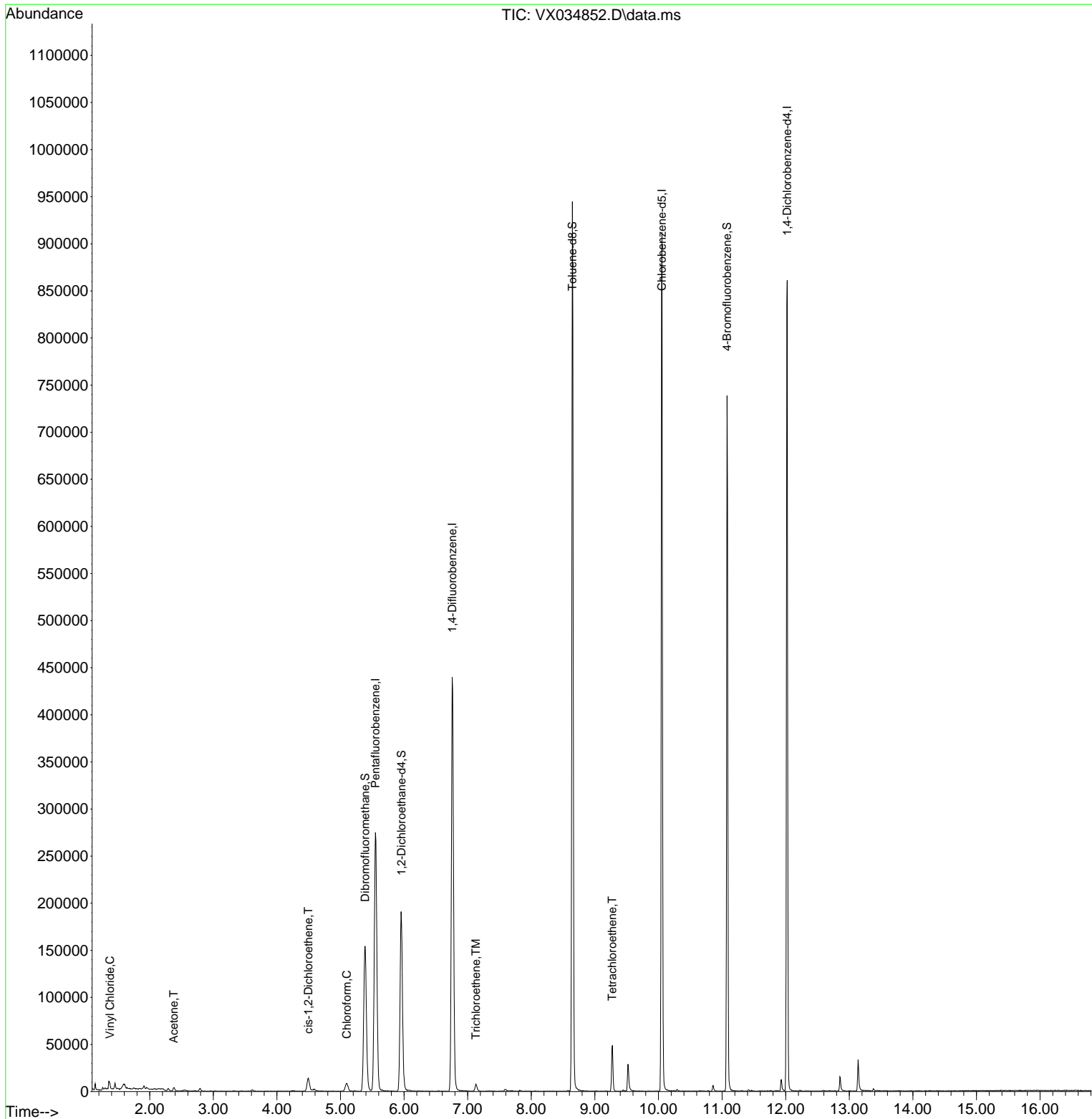
Internal Standards						
1) Pentafluorobenzene	5.550	168	252716	50.000	ug/l	0.00
34) 1,4-Difluorobenzene	6.757	114	431940	50.000	ug/l	0.00
63) Chlorobenzene-d5	10.055	117	384763	50.000	ug/l	0.00
72) 1,4-Dichlorobenzene-d4	12.024	152	172349	50.000	ug/l	0.00
System Monitoring Compounds						
33) 1,2-Dichloroethane-d4	5.958	65	179158	46.355	ug/l	0.00
Spiked Amount	50.000	Range	78 - 117	Recovery	=	92.700%
35) Dibromofluoromethane	5.385	113	135218	47.330	ug/l	0.00
Spiked Amount	50.000	Range	75 - 124	Recovery	=	94.660%
50) Toluene-d8	8.647	98	524999	49.786	ug/l	0.00
Spiked Amount	50.000	Range	92 - 112	Recovery	=	99.580%
62) 4-Bromofluorobenzene	11.079	95	188253	46.133	ug/l	0.00
Spiked Amount	50.000	Range	83 - 123	Recovery	=	92.260%
Target Compounds						
					Qvalue	
4) Vinyl Chloride	1.374	62	2382	0.766	ug/l #	88
16) Acetone	2.380	43	4127	2.639	ug/l	95
27) cis-1,2-Dichloroethene	4.495	96	8585	2.599	ug/l	93
30) Chloroform	5.099	83	10526	1.905	ug/l	95
44) Trichloroethene	7.129	130	2778	0.897	ug/l	93
64) Tetrachloroethene	9.275	164	8838	3.217	ug/l	95

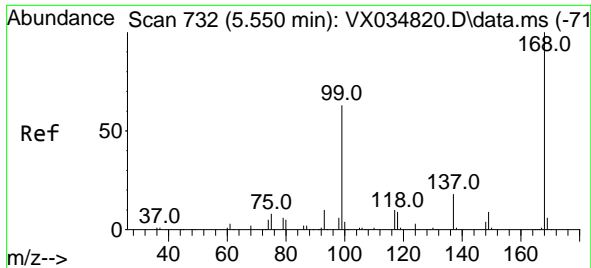
(#) = qualifier out of range (m) = manual integration (+) = signals summed

Data Path : Z:\voasrv\HPCHEM1\MSVOA_X\Data\VX033023\
 Data File : VX034852.D
 Acq On : 30 Mar 2023 15:05
 Operator : JC/MD
 Sample : 02074-01
 Misc : 5.0mL/MSVOA_X/WATER
 ALS Vial : 14 Sample Multiplier: 1

Instrument :
 MSVOA_X
 ClientSampleId :
 TB-01-032323

Quant Time: Mar 31 01:32:49 2023
 Quant Method : Z:\voasrv\HPCHEM1\MSVOA_X\Method\82X032923W.M
 Quant Title : SW846 8260
 QLast Update : Thu Mar 30 11:02:25 2023
 Response via : Initial Calibration





#1
 Pentafluorobenzene
 Concen: 50.000 ug/l
 RT: 5.550 min Scan# 71
 Delta R.T. -0.000 min
 Lab File: VX034852.D
 Acq: 30 Mar 2023 15:05

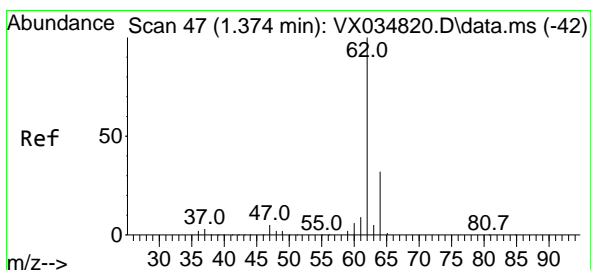
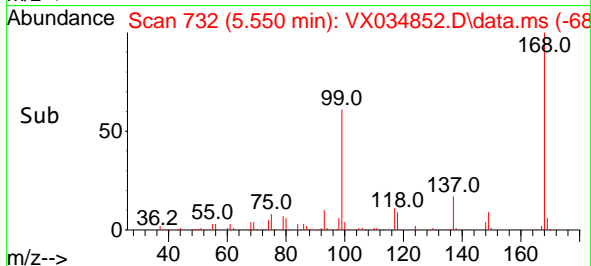
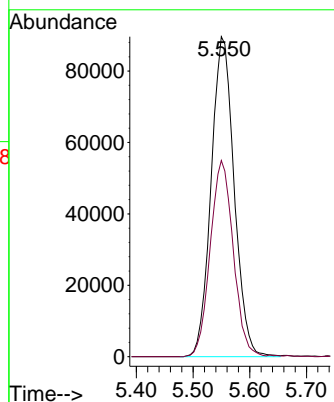
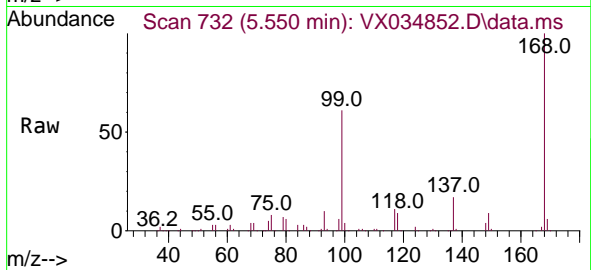
Instrument :

MSVOA_X

ClientSampleId :

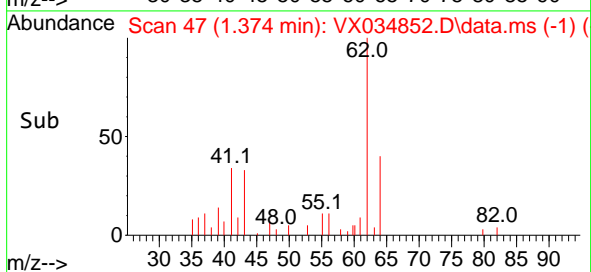
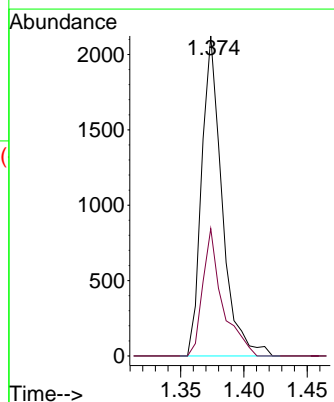
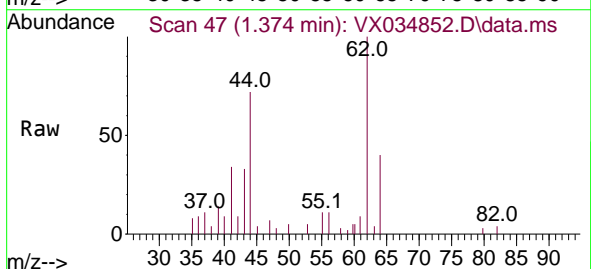
TB-01-032323

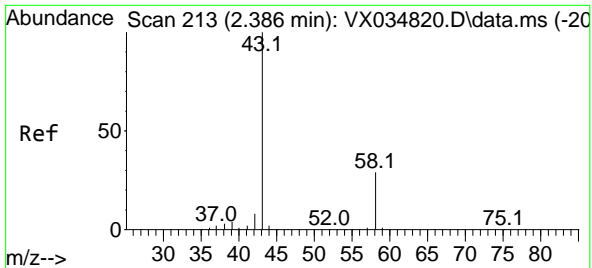
Tgt Ion:168 Resp: 252716
 Ion Ratio Lower Upper
 168 100
 99 61.3 45.7 68.5



#4
 Vinyl Chloride
 Concen: 0.766 ug/l
 RT: 1.374 min Scan# 47
 Delta R.T. 0.000 min
 Lab File: VX034852.D
 Acq: 30 Mar 2023 15:05

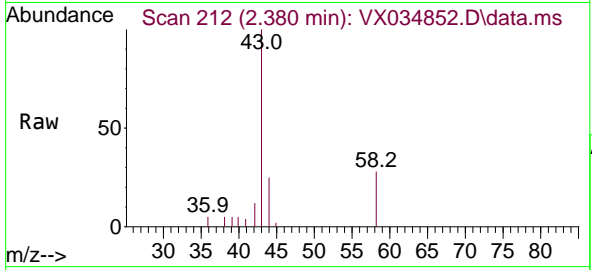
Tgt Ion: 62 Resp: 2382
 Ion Ratio Lower Upper
 62 100
 64 39.8 26.4 39.6#



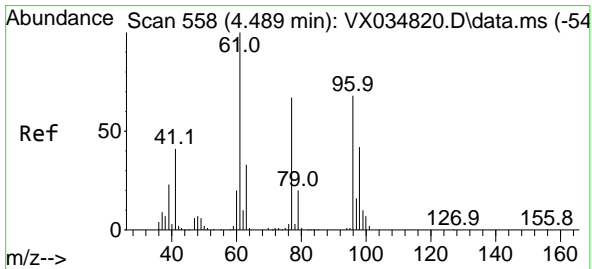
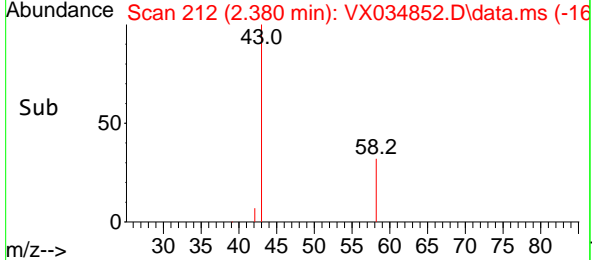
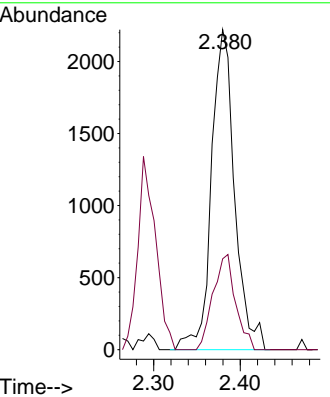


#16
 Acetone
 Concen: 2.639 ug/l
 RT: 2.380 min Scan# 212
 Delta R.T. -0.006 min
 Lab File: VX034852.D
 Acq: 30 Mar 2023 15:05

Instrument : MSVOA_X
 ClientSampleId : TB-01-032323

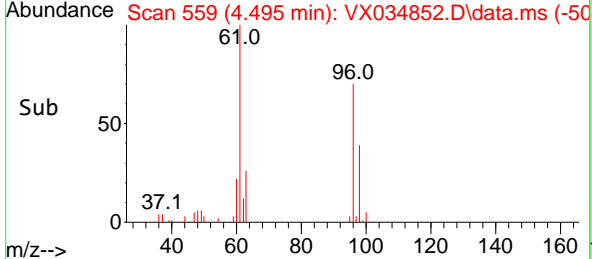
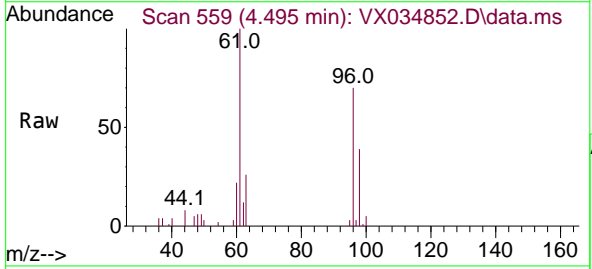
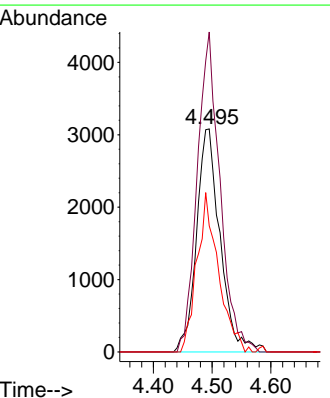


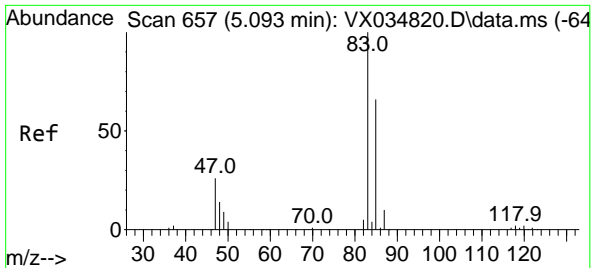
Tgt Ion: 43 Resp: 4127
 Ion Ratio Lower Upper
 43 100
 58 28.4 24.7 37.1



#27
 cis-1,2-Dichloroethene
 Concen: 2.599 ug/l
 RT: 4.495 min Scan# 559
 Delta R.T. 0.006 min
 Lab File: VX034852.D
 Acq: 30 Mar 2023 15:05

Tgt Ion: 96 Resp: 8585
 Ion Ratio Lower Upper
 96 100
 61 138.9 0.0 300.4
 98 65.4 0.0 129.0

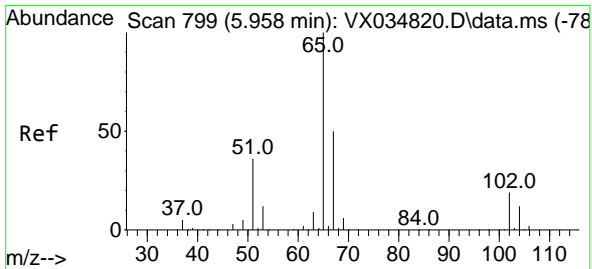
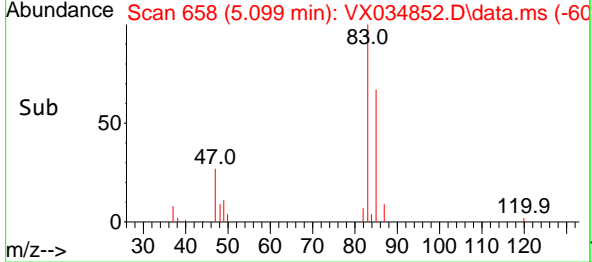
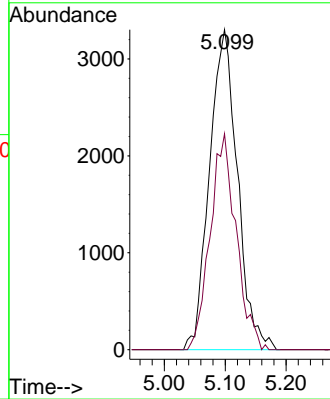
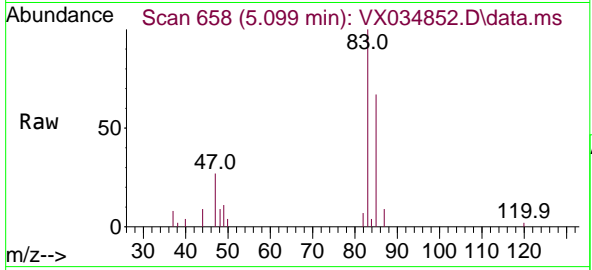




#30
 Chloroform
 Concen: 1.905 ug/l
 RT: 5.099 min Scan# 61
 Delta R.T. 0.006 min
 Lab File: VX034852.D
 Acq: 30 Mar 2023 15:05

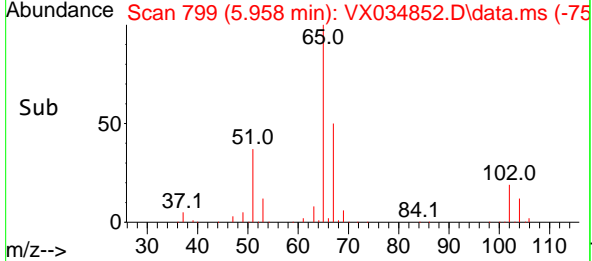
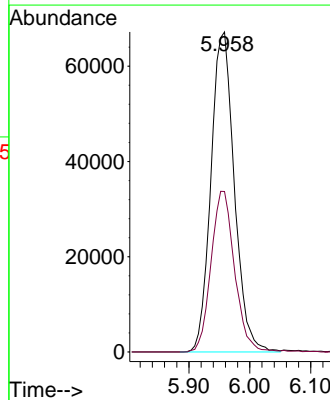
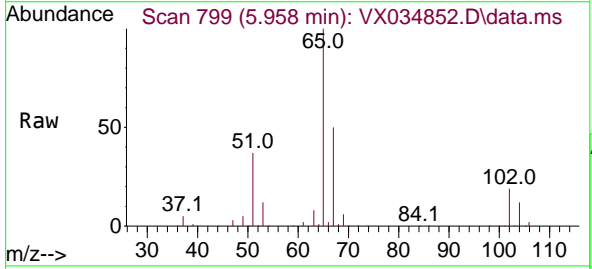
Instrument : MSVOA_X
 ClientSampleId : TB-01-032323

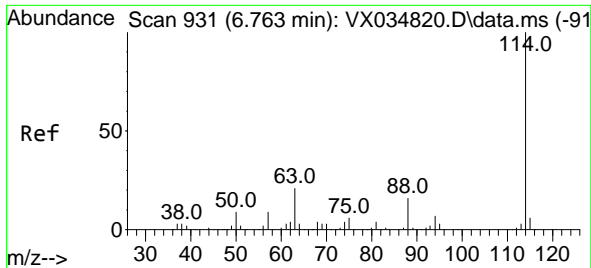
Tgt Ion: 83 Resp: 10526
 Ion Ratio Lower Upper
 83 100
 85 67.5 50.6 76.0



#33
 1,2-Dichloroethane-d4
 Concen: 46.355 ug/l
 RT: 5.958 min Scan# 799
 Delta R.T. 0.000 min
 Lab File: VX034852.D
 Acq: 30 Mar 2023 15:05

Tgt Ion: 65 Resp: 179158
 Ion Ratio Lower Upper
 65 100
 67 50.5 0.0 104.0





#34
 1,4-Difluorobenzene
 Concen: 50.000 ug/l
 RT: 6.757 min Scan# 911
 Delta R.T. -0.006 min
 Lab File: VX034852.D
 Acq: 30 Mar 2023 15:05

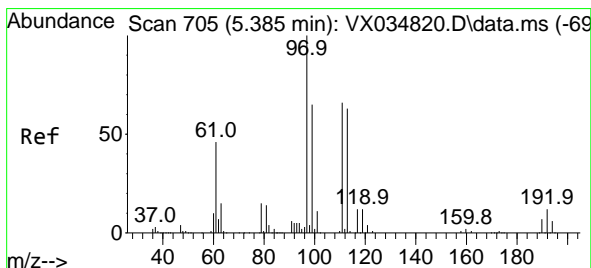
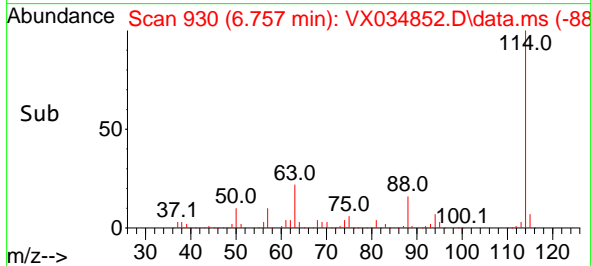
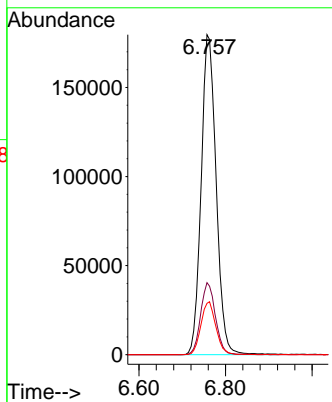
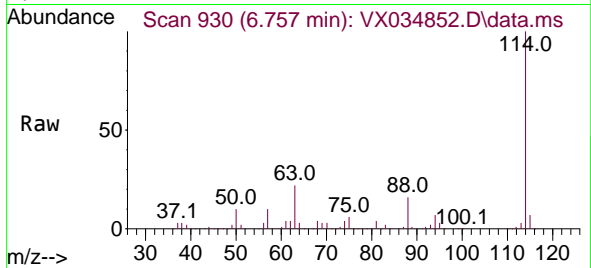
Instrument :

MSVOA_X

ClientSampleId :

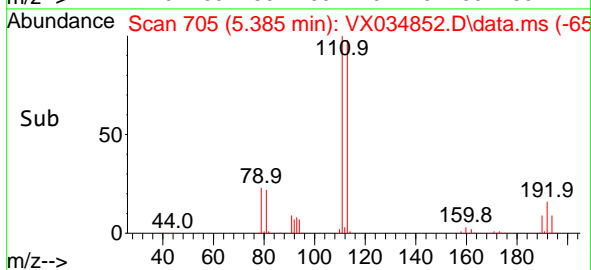
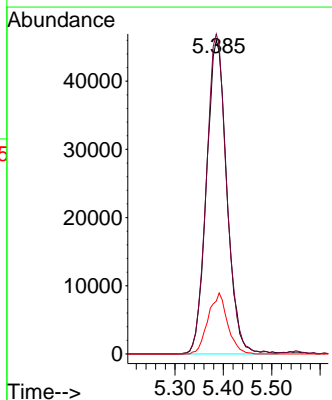
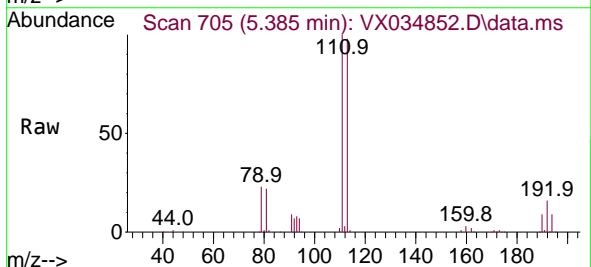
TB-01-032323

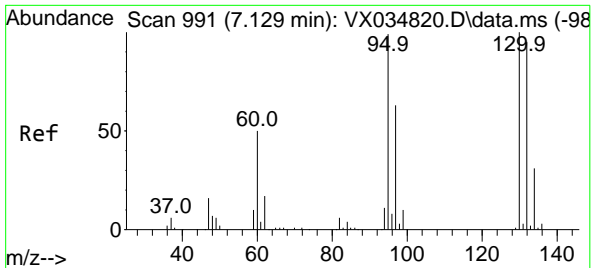
Tgt Ion:114 Resp: 431940
 Ion Ratio Lower Upper
 114 100
 63 22.5 0.0 42.2
 88 16.1 0.0 33.2



#35
 Dibromofluoromethane
 Concen: 47.330 ug/l
 RT: 5.385 min Scan# 705
 Delta R.T. 0.000 min
 Lab File: VX034852.D
 Acq: 30 Mar 2023 15:05

Tgt Ion:113 Resp: 135218
 Ion Ratio Lower Upper
 113 100
 111 101.1 83.7 125.5
 192 18.5 15.4 23.2

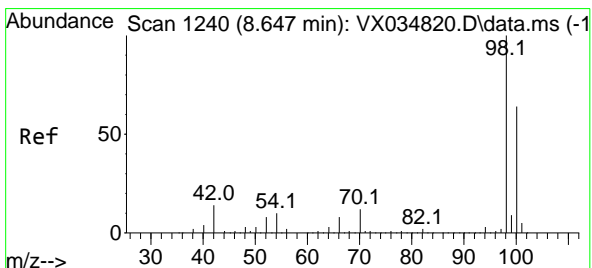
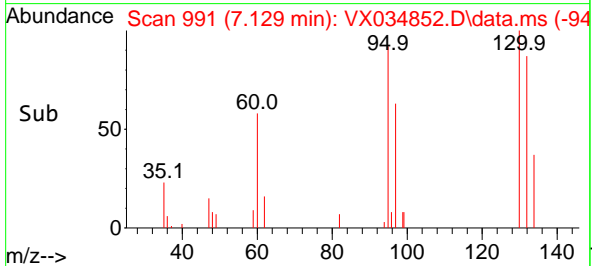
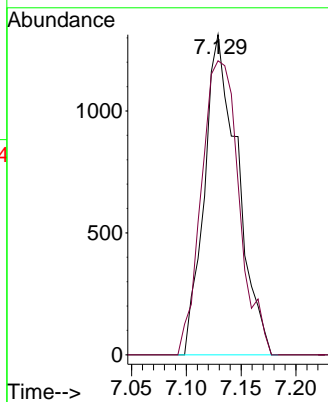
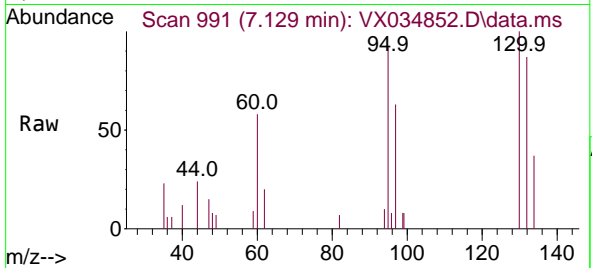




#44
 Trichloroethene
 Concen: 0.897 ug/l
 RT: 7.129 min Scan# 94
 Delta R.T. 0.000 min
 Lab File: VX034852.D
 Acq: 30 Mar 2023 15:05

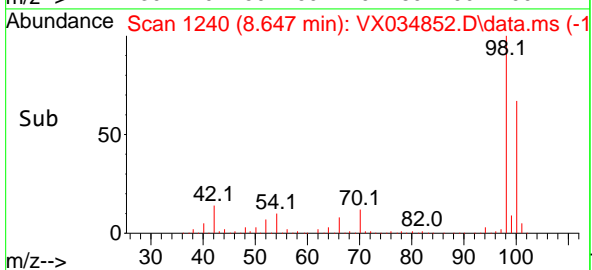
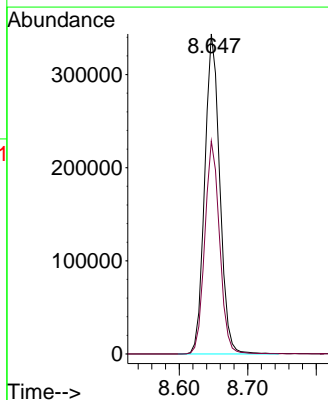
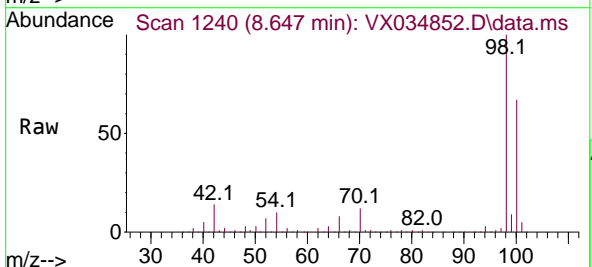
Instrument :
 MSVOA_X
 ClientSampleId :
 TB-01-032323

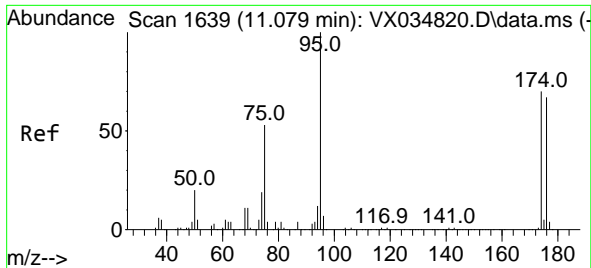
Tgt Ion:130 Resp: 2778
 Ion Ratio Lower Upper
 130 100
 95 91.9 0.0 198.4



#50
 Toluene-d8
 Concen: 49.786 ug/l
 RT: 8.647 min Scan# 1240
 Delta R.T. 0.000 min
 Lab File: VX034852.D
 Acq: 30 Mar 2023 15:05

Tgt Ion: 98 Resp: 524999
 Ion Ratio Lower Upper
 98 100
 100 65.4 52.5 78.7

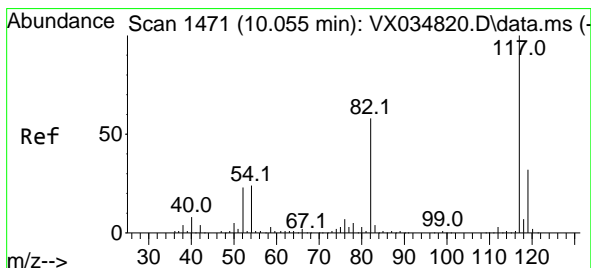
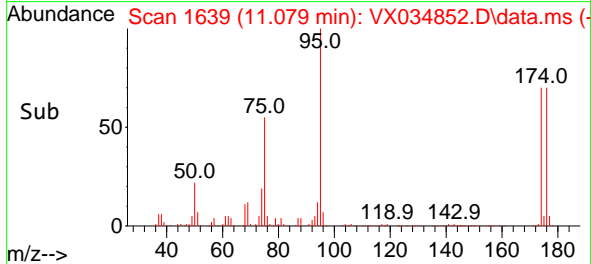
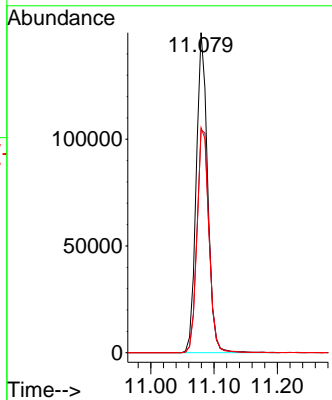
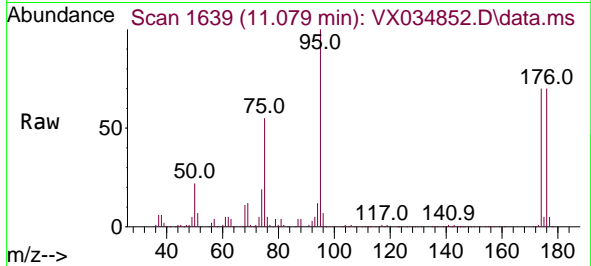




#62
 4-Bromofluorobenzene
 Concen: 46.133 ug/l
 RT: 11.079 min Scan# 1639
 Delta R.T. 0.000 min
 Lab File: VX034852.D
 Acq: 30 Mar 2023 15:05

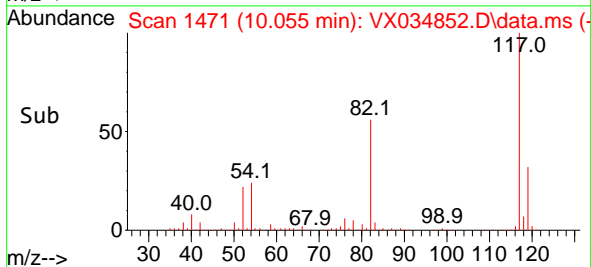
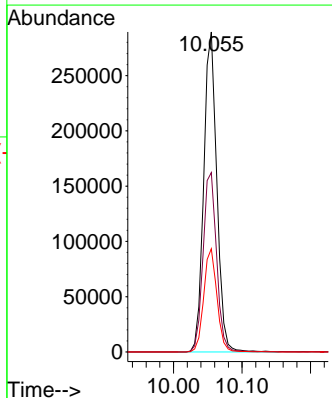
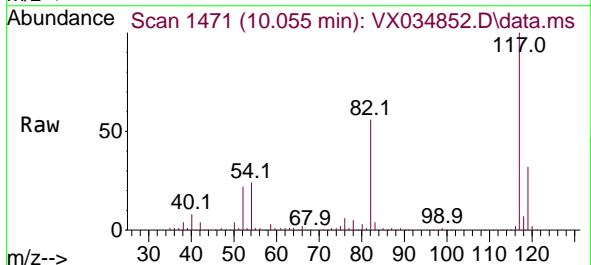
Instrument : MSVOA_X
 ClientSampleId : TB-01-032323

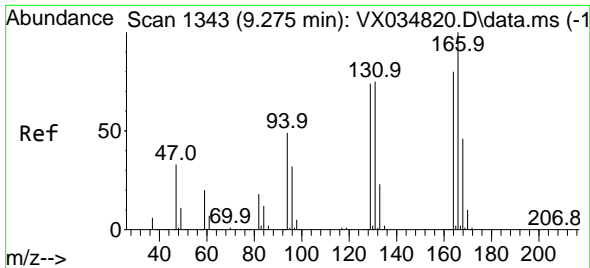
Tgt Ion: 95 Resp: 188253
 Ion Ratio Lower Upper
 95 100
 174 74.0 0.0 147.4
 176 73.1 0.0 140.6



#63
 Chlorobenzene-d5
 Concen: 50.000 ug/l
 RT: 10.055 min Scan# 1471
 Delta R.T. 0.000 min
 Lab File: VX034852.D
 Acq: 30 Mar 2023 15:05

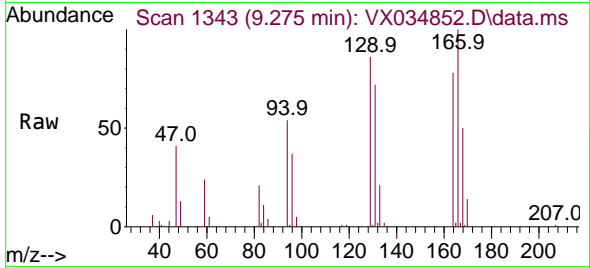
Tgt Ion: 117 Resp: 384763
 Ion Ratio Lower Upper
 117 100
 82 56.1 45.0 67.4
 119 32.3 26.0 39.0



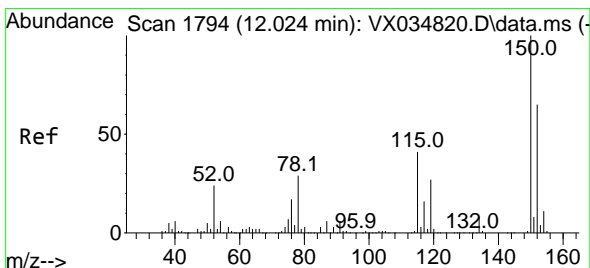
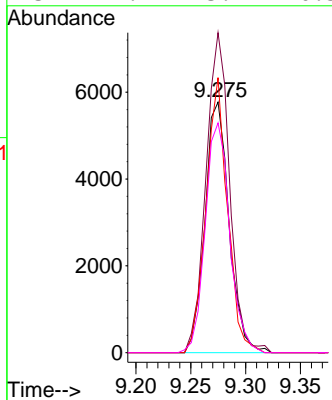
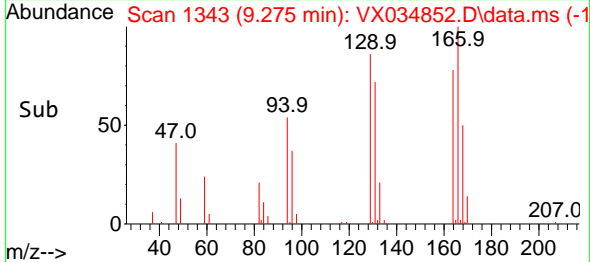


#64
 Tetrachloroethene
 Concen: 3.217 ug/l
 RT: 9.275 min Scan# 11
 Delta R.T. 0.000 min
 Lab File: VX034852.D
 Acq: 30 Mar 2023 15:05

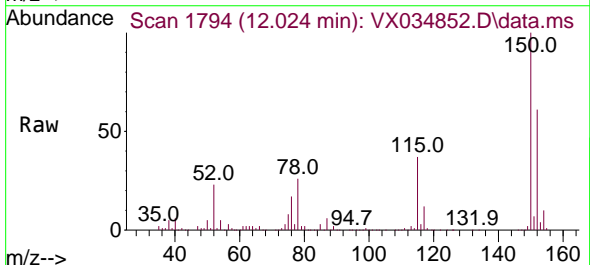
Instrument :
 MSVOA_X
 ClientSampleId :
 TB-01-032323



Tgt Ion:164 Resp: 8838
 Ion Ratio Lower Upper
 164 100
 166 127.7 102.7 154.1
 129 109.8 75.6 113.4
 131 91.7 73.7 110.5



#72
 1,4-Dichlorobenzene-d4
 Concen: 50.000 ug/l
 RT: 12.024 min Scan# 1794
 Delta R.T. 0.000 min
 Lab File: VX034852.D
 Acq: 30 Mar 2023 15:05



Tgt Ion:152 Resp: 172349
 Ion Ratio Lower Upper
 152 100
 115 61.4 45.0 135.0
 150 157.9 0.0 352.4

