

Data Path : Z:\VOASRV\HPCHEM1\MSVOA X\DATA\VX033120\
 Data File : VX015451.D
 Acq On : 31 Mar 2020 14:12
 Operator : JC/SP
 Sample : IBLK
 Misc : 5.0mL/MSVOA X/WATER
 ALS Vial : 10 Sample Multiplier: 1

Instrument :
 MSVOA_X
 ClientSampleId :
 IBLK

Quant Time: Apr 01 08:12:17 2020
 Quant Method : Z:\VOASRV\HPCHEM1\MSVOA_X\METHOD\82X032720W.M
 Quant Title : SW846 8260
 QLast Update : Fri Mar 27 09:35:51 2020
 Response via : Initial Calibration

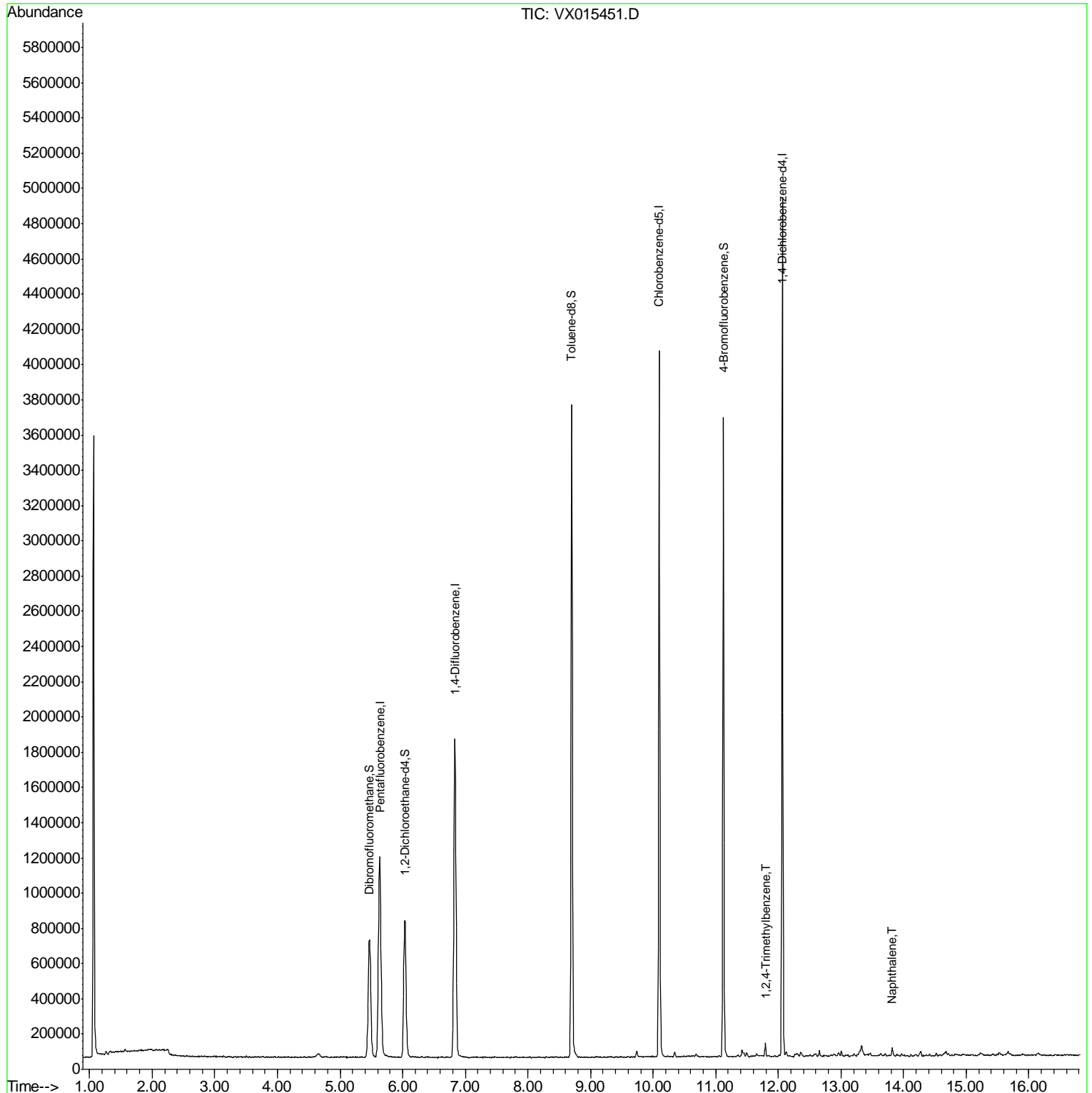
Internal Standards	R.T.	QIon	Response	Conc	Units	Dev(Min)
1) Pentafluorobenzene	5.64	168	1132010	50.00	ug/l	0.00
34) 1,4-Difluorobenzene	6.84	114	1829730	50.00	ug/l	0.00
63) Chlorobenzene-d5	10.10	117	1749541	50.00	ug/l	0.00
72) 1,4-Dichlorobenzene-d4	12.06	152	942715	50.00	ug/l	0.00
System Monitoring Compounds						
33) 1,2-Dichloroethane-d4	6.03	65	766997	48.04	ug/l	0.00
Spiked Amount	50.000		Recovery	=	96.08%	
35) Dibromofluoromethane	5.47	113	577755	49.40	ug/l	0.00
Spiked Amount	50.000		Recovery	=	98.80%	
50) Toluene-d8	8.70	98	2210144	51.32	ug/l	0.00
Spiked Amount	50.000		Recovery	=	102.64%	
62) 4-Bromofluorobenzene	11.12	95	956349	54.65	ug/l	0.00
Spiked Amount	50.000		Recovery	=	109.30%	
Target Compounds						
84) 1,2,4-Trimethylbenzene	11.79	105	32598	0.606	ug/l	99
95) Naphthalene	13.82	128	29108	0.418	ug/l #	95

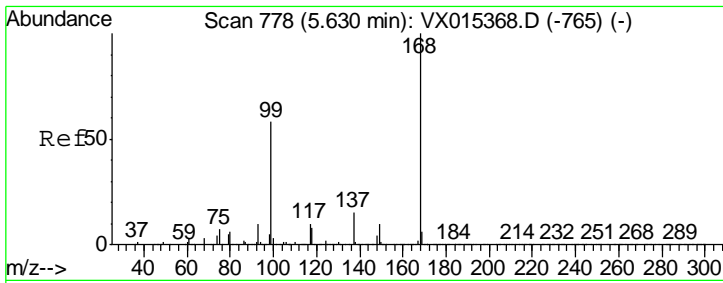
(#) = qualifier out of range (m) = manual integration (+) = signals summed

Data Path : Z:\VOASRV\HPCHEM1\MSVOA X\DATA\VX033120\
Data File : VX015451.D
Acq On : 31 Mar 2020 14:12
Operator : JC/SP
Sample : IBLK
Misc : 5.0mL/MSVOA X/WATER
ALS Vial : 10 Sample Multiplier: 1

Instrument :
MSVOA_X
ClientSampleId :
IBLK

Quant Time: Apr 01 08:12:17 2020
Quant Method : Z:\VOASRV\HPCHEM1\MSVOA_X\METHOD\82X032720W.M
Quant Title : SW846 8260
QLast Update : Fri Mar 27 09:35:51 2020
Response via : Initial Calibration

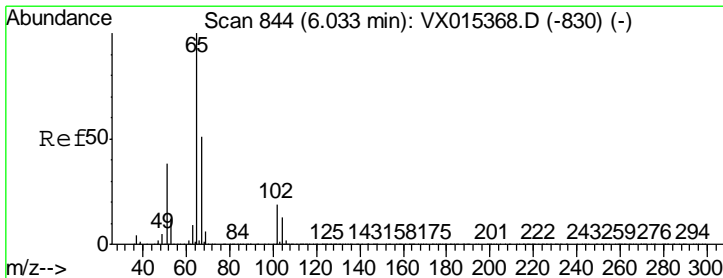
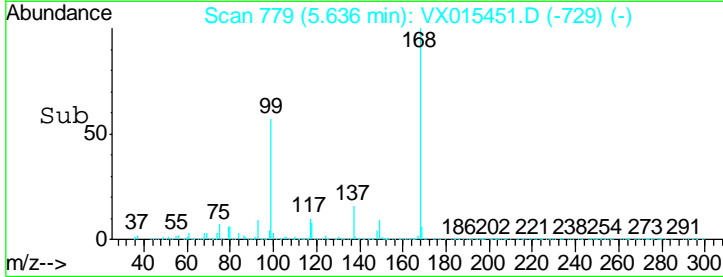
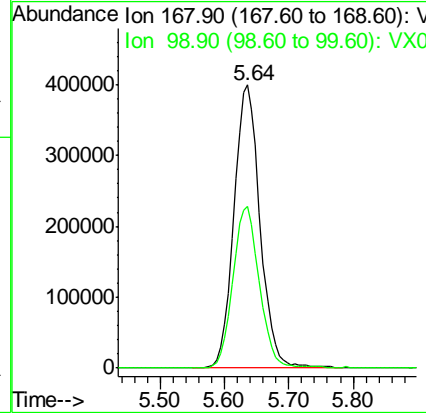
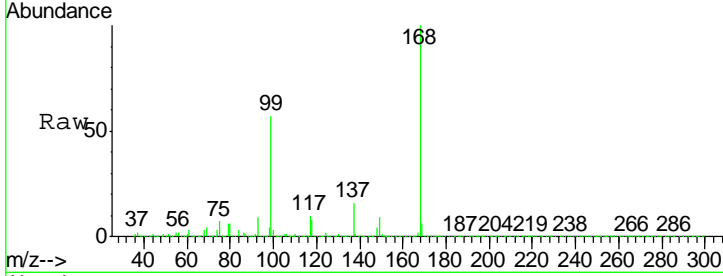




#1
 Pentafluorobenzene
 Concen: 50.000 ug/l
 RT: 5.64 min Scan# 779
 Delta R.T. 0.01 min
 Lab File: VX015451.D
 Acq: 31 Mar 2020 14:12

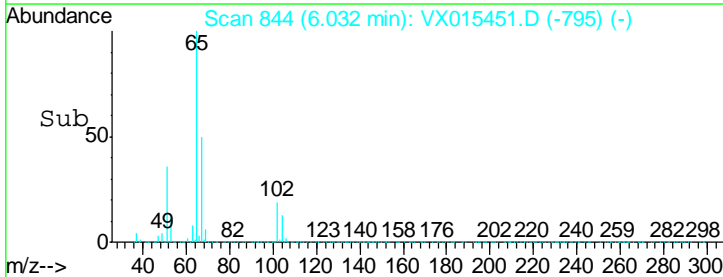
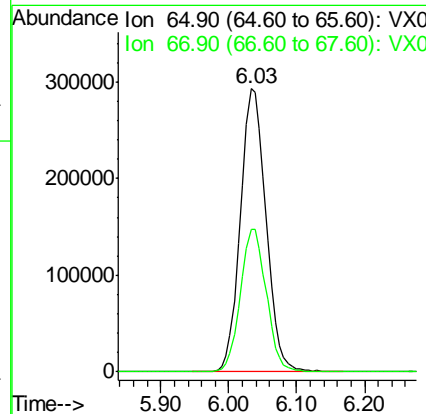
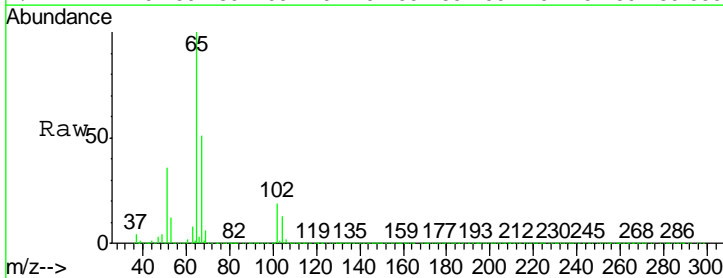
Instrument :
 MSVOA_X
 ClientSampleID :
 BLK

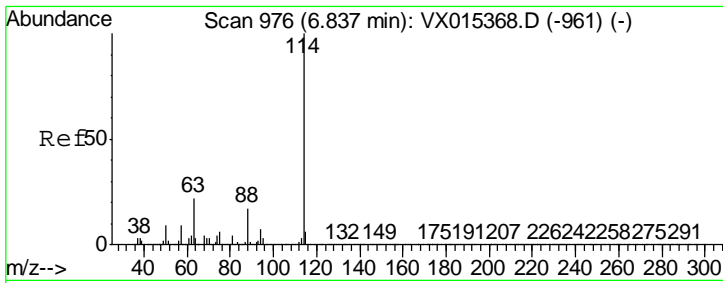
Tgt Ion: 168 Resp: 1132010
 Ion Ratio Lower Upper
 168 100
 99 57.3 46.4 69.6



#33
 1,2-Dichloroethane-d4
 Concen: 48.040 ug/l
 RT: 6.03 min Scan# 844
 Delta R.T. -0.00 min
 Lab File: VX015451.D
 Acq: 31 Mar 2020 14:12

Tgt Ion: 65 Resp: 766997
 Ion Ratio Lower Upper
 65 100
 67 50.8 0.0 102.6

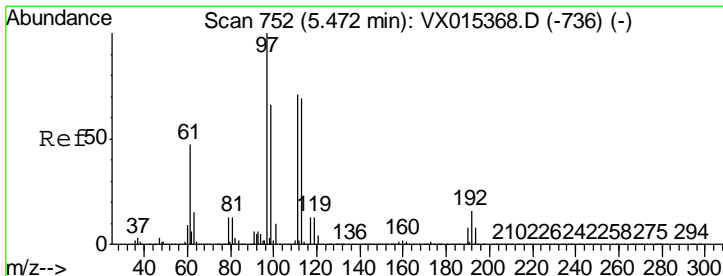
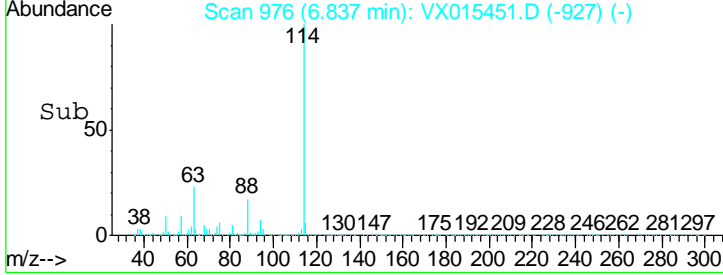
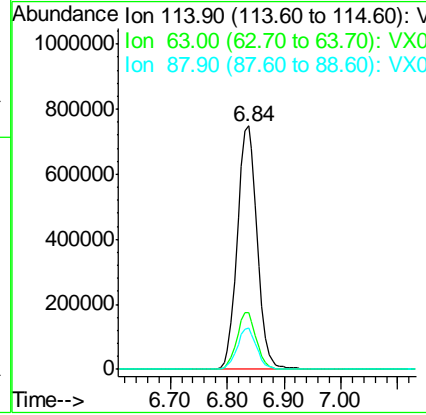
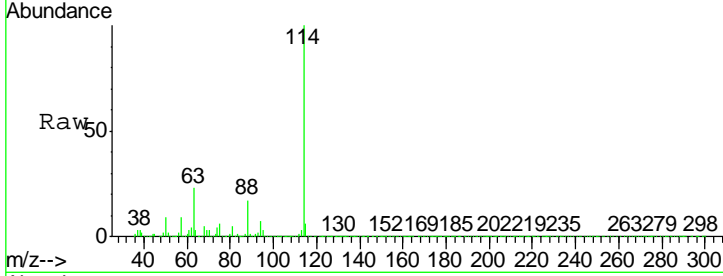




#34
 1,4-Difluorobenzene
 Concen: 50.000 ug/l
 RT: 6.84 min Scan# 976
 Delta R.T. -0.00 min
 Lab File: VX015451.D
 Acq: 31 Mar 2020 14:12

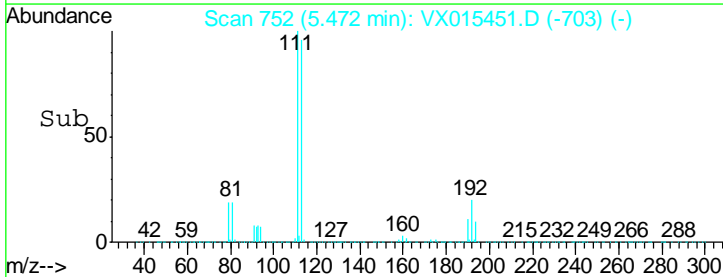
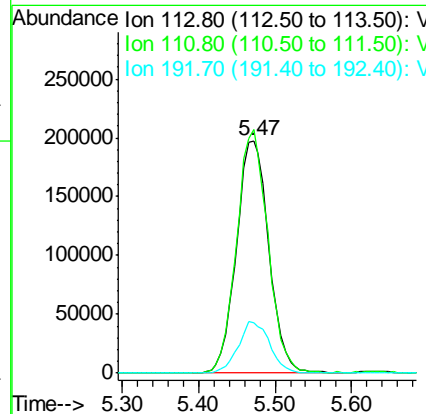
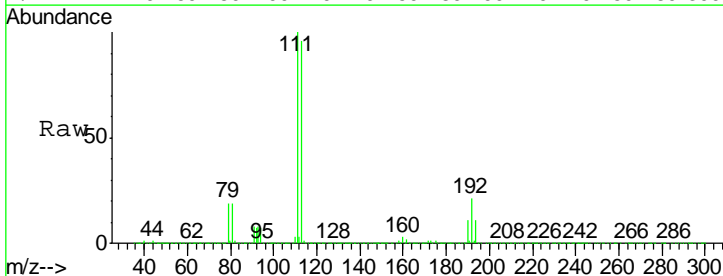
Instrument :
 MSVOA_X
 ClientSampled :
 IBLK

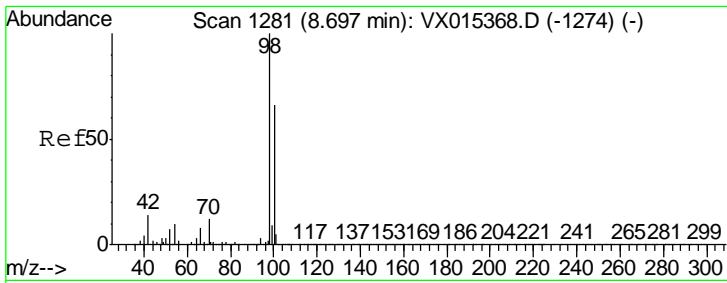
Tgt Ion	Resp	Lower	Upper
114	1829730		
63	23.3	0.0	44.2
88	16.7	0.0	33.8



#35
 Dibromofluoromethane
 Concen: 49.397 ug/l
 RT: 5.47 min Scan# 752
 Delta R.T. -0.00 min
 Lab File: VX015451.D
 Acq: 31 Mar 2020 14:12

Tgt Ion	Resp	Lower	Upper
113	577755		
111	101.3	81.5	122.3
192	21.6	17.8	26.6

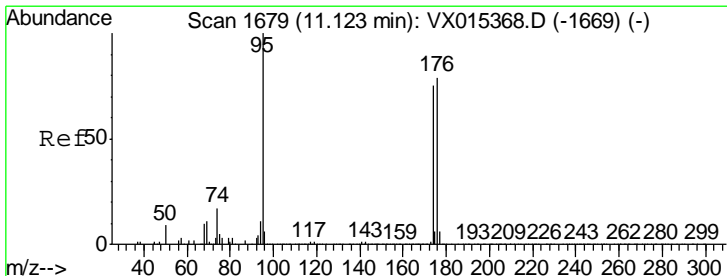
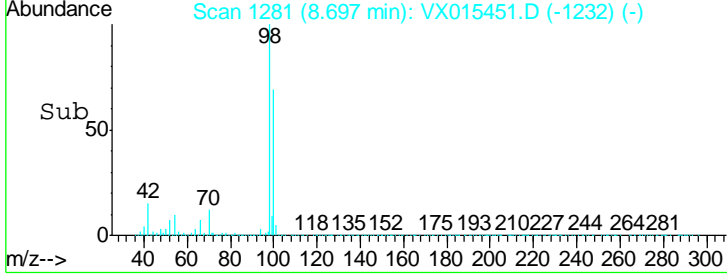
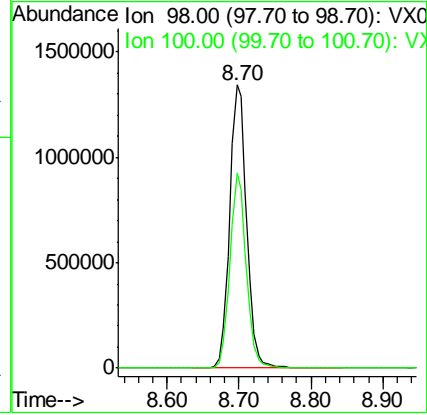
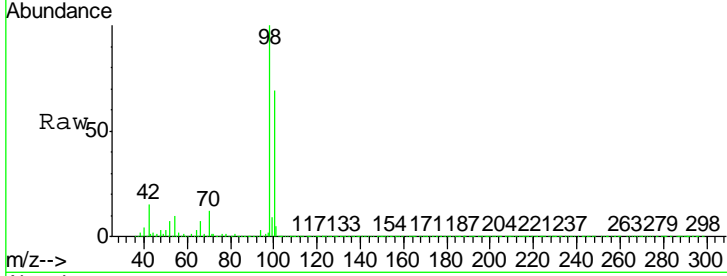




#50
 Toluene-d8
 Concen: 51.325 ug/l
 RT: 8.70 min Scan# 1281
 Delta R.T. -0.00 min
 Lab File: VX015451.D
 Acq: 31 Mar 2020 14:12

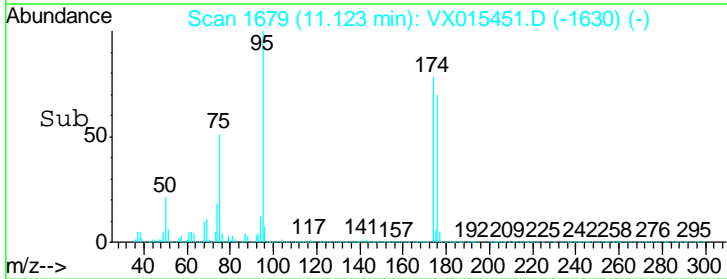
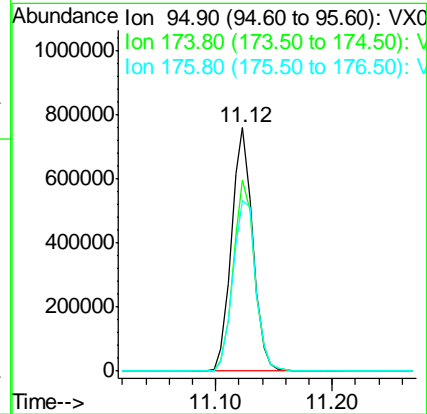
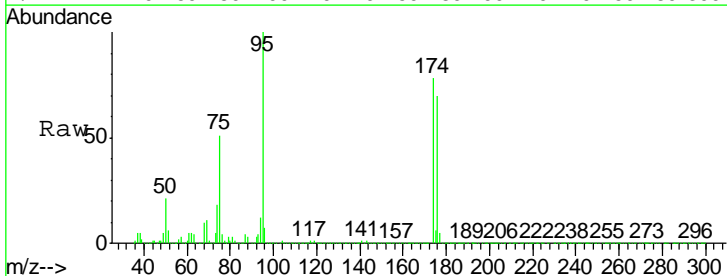
Instrument :
 MSVOA_X
ClientSampled :
 IBLK

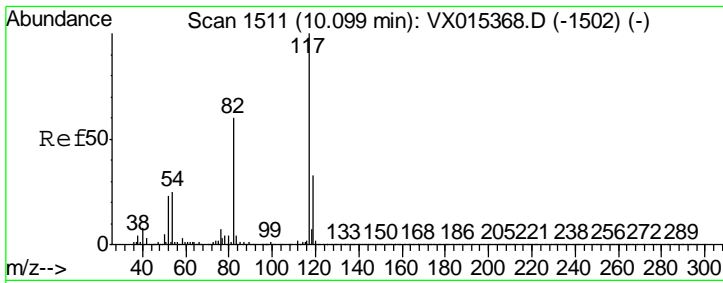
Tgt Ion: 98 Resp: 2210144
 Ion Ratio Lower Upper
 98 100
 100 66.4 53.5 80.3



#62
 4-Bromofluorobenzene
 Concen: 54.647 ug/l
 RT: 11.12 min Scan# 1679
 Delta R.T. -0.00 min
 Lab File: VX015451.D
 Acq: 31 Mar 2020 14:12

Tgt Ion: 95 Resp: 956349
 Ion Ratio Lower Upper
 95 100
 174 79.3 0.0 158.6
 176 76.2 0.0 159.0



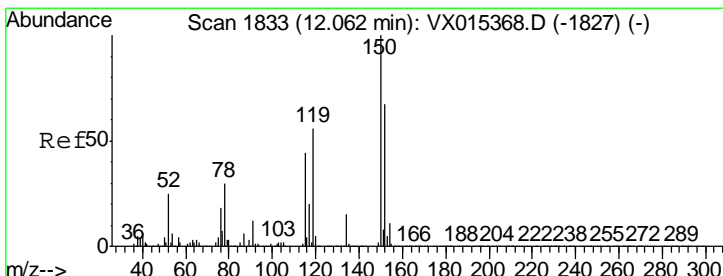
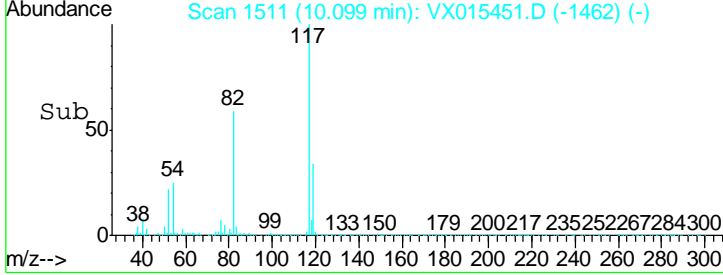
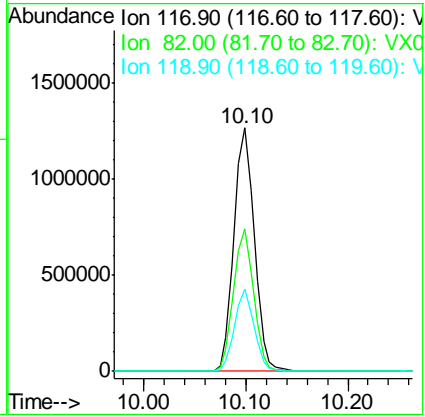
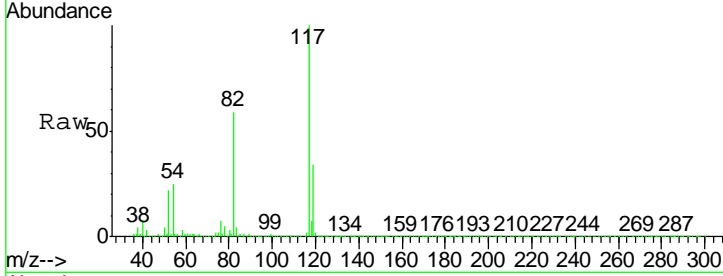


#63
 Chlorobenzene-d5
 Concen: 50.000 ug/l
 RT: 10.10 min Scan# 1511
 Delta R.T. -0.00 min
 Lab File: VX015451.D
 Acq: 31 Mar 2020 14:12

Instrument :
 MSVOA_X
 ClientSampled :
 IBLK

Tgt Ion: 117 Resp: 1749541

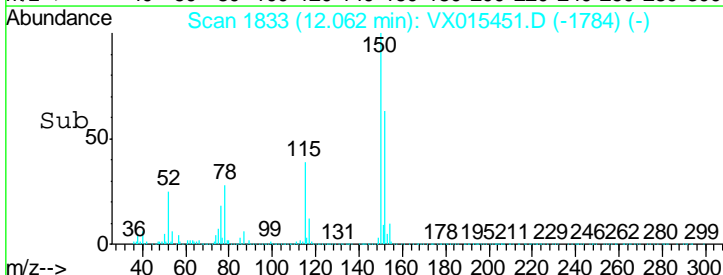
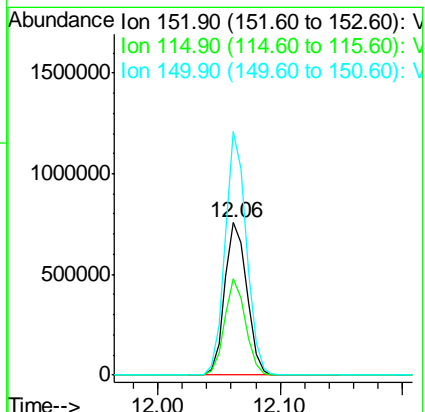
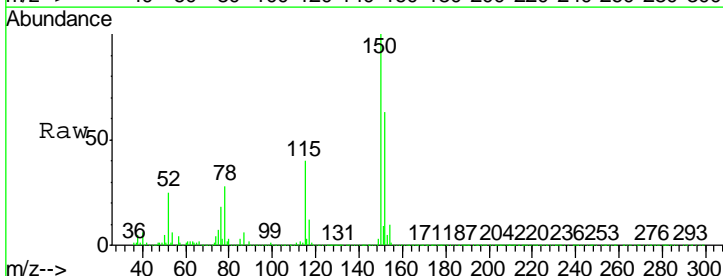
Ion	Ratio	Lower	Upper
117	100		
82	58.6	47.8	71.8
119	34.0	26.8	40.2

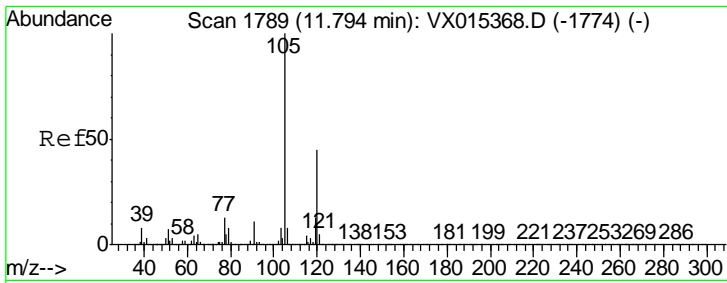


#72
 1,4-Dichlorobenzene-d4
 Concen: 50.000 ug/l
 RT: 12.06 min Scan# 1833
 Delta R.T. -0.00 min
 Lab File: VX015451.D
 Acq: 31 Mar 2020 14:12

Tgt Ion: 152 Resp: 942715

Ion	Ratio	Lower	Upper
152	100		
115	59.8	39.0	116.9
150	153.0	0.0	340.8

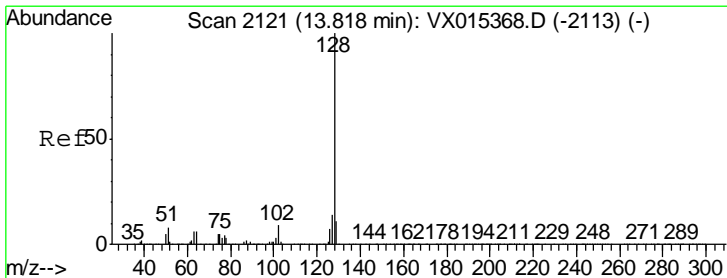
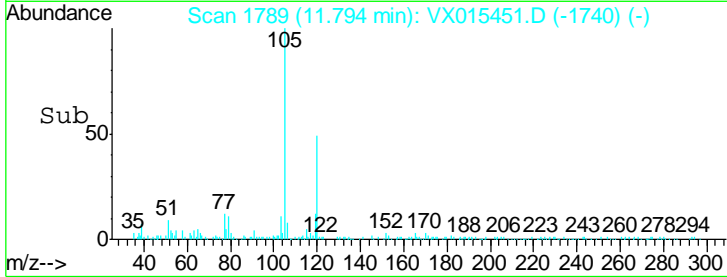
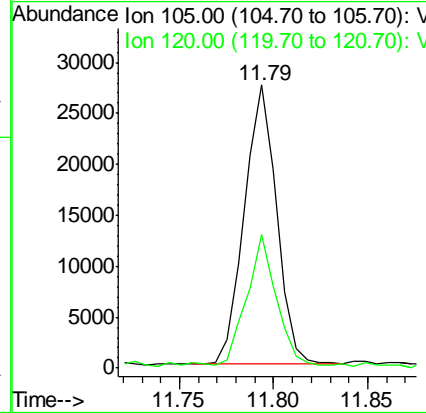
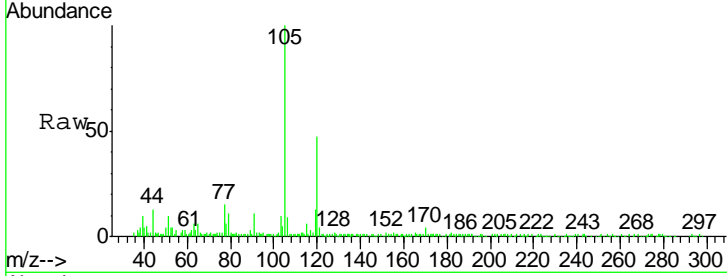




#84
 1,2,4-Trimethylbenzene
 Concen: 0.606 ug/l
 RT: 11.79 min Scan# 1789
 Delta R.T. -0.00 min
 Lab File: VX015451.D
 Acq: 31 Mar 2020 14:12

Instrument :
 MSVOA_X
 ClientSampled :
 IBLK

Tgt Ion	Resp	Lower	Upper
105	100		
120	45.9	22.7	68.1



#95
 Naphthalene
 Concen: 0.418 ug/l
 RT: 13.82 min Scan# 2121
 Delta R.T. -0.00 min
 Lab File: VX015451.D
 Acq: 31 Mar 2020 14:12

Tgt Ion	Resp	Lower	Upper
128	100		
127	14.3	10.6	15.8
129	13.6	8.8	13.2#

