

Data Path : Z:\voasrv\HPCHEM1\MSVOA\_X\Data\VX033121\  
 Data File : VX021682.D  
 Acq On : 31 Mar 2021 14:12  
 Operator : JC/MD  
 Sample : M1842-18  
 Misc : 5.0mL/MSVOA\_X/WATER  
 ALS Vial : 13 Sample Multiplier: 1

Instrument :  
 MSVOA\_X  
 ClientSampled :

Quant Time: Apr 01 03:24:52 2021  
 Quant Method : Z:\voasrv\HPCHEM1\MSVOA\_X\Method\82X032421W.M  
 Quant Title : SW846 8260  
 QLast Update : Wed Mar 24 12:25:26 2021  
 Response via : Initial Calibration

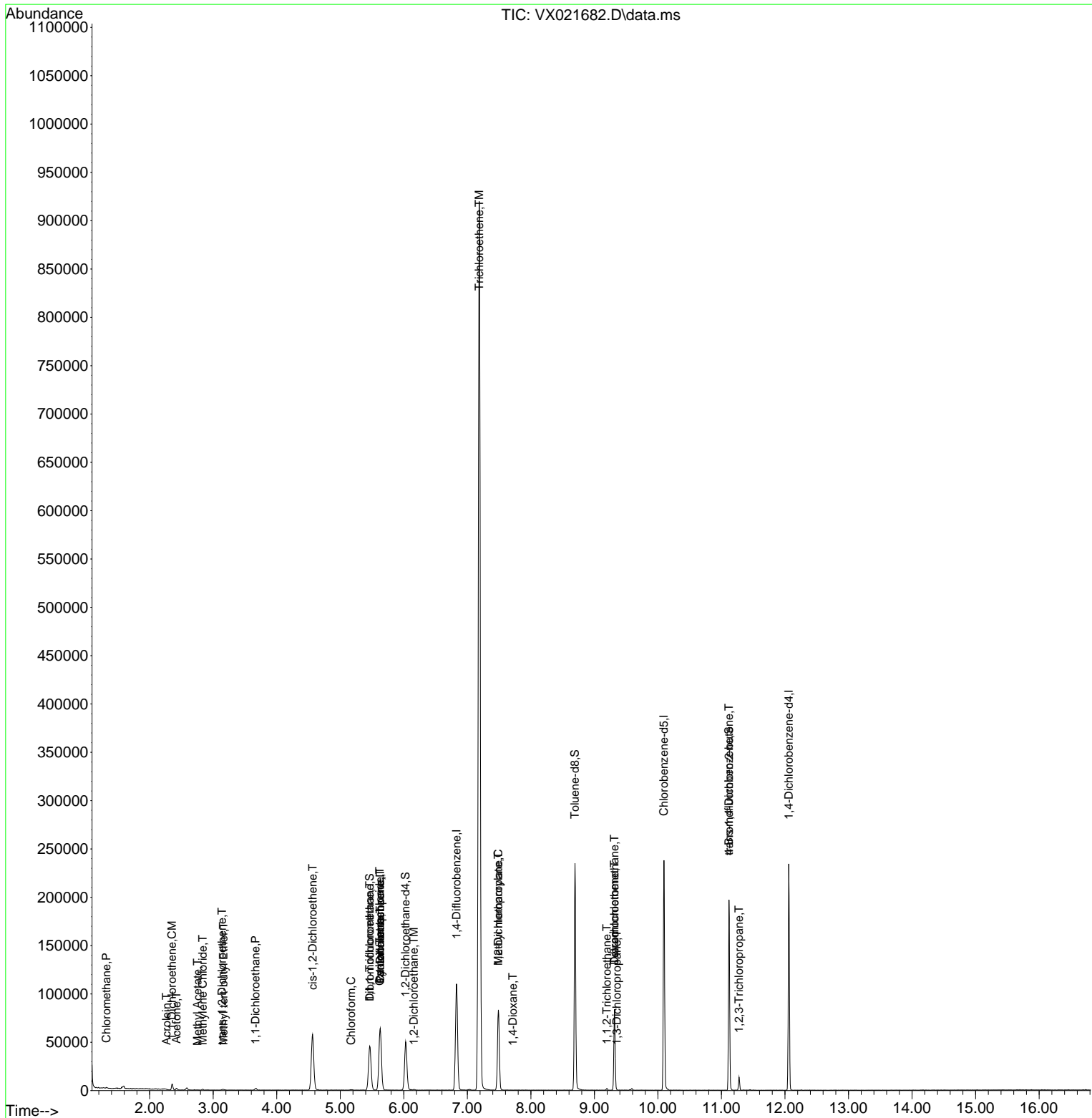
Compound	R.T.	QIon	Response	Conc	Units	Dev(Min)
-----						
Internal Standards						
1) Pentafluorobenzene	5.629	168	57321	50.00	ug/l	0.00
34) 1,4-Difluorobenzene	6.829	114	102090	50.00	ug/l	0.00
63) Chlorobenzene-d5	10.094	117	103150	50.00	ug/l	0.00
72) 1,4-Dichlorobenzene-d4	12.059	152	43217	50.00	ug/l	0.00
System Monitoring Compounds						
33) 1,2-Dichloroethane-d4	6.029	65	48507	50.86	ug/l	0.00
Spiked Amount	50.000	Range 78 - 117	Recovery	=	101.72%	
35) Dibromofluoromethane	5.464	113	37413	51.59	ug/l	0.00
Spiked Amount	50.000	Range 75 - 124	Recovery	=	103.18%	
50) Toluene-d8	8.694	98	130066	50.33	ug/l	0.00
Spiked Amount	50.000	Range 92 - 112	Recovery	=	100.66%	
62) 4-Bromofluorobenzene	11.118	95	50107	49.87	ug/l	0.00
Spiked Amount	50.000	Range 83 - 123	Recovery	=	99.74%	
Target Compounds						
						Qvalue
3) Chloromethane	1.317	50	1314	1.85	ug/l	91
12) 1,1-Dichloroethene	2.352	96	1847	3.20	ug/l	87
13) Acrolein	2.264	56	19	4.53	ug/l #	14
16) Acetone	2.423	43	1725	4.78	ug/l #	85
18) Methyl Acetate	2.752	43	224	0.22	ug/l #	47
19) Methyl tert-butyl Ether	3.164	73	445	0.21	ug/l #	55
20) Methylene Chloride	2.835	84	275	0.39	ug/l #	68
21) trans-1,2-Dichloroethene	3.140	96	235	0.37	ug/l #	68
24) 1,1-Dichloroethane	3.664	63	2038	1.66	ug/l #	94
27) cis-1,2-Dichloroethene	4.564	96	34649	47.03	ug/l	98
30) Chloroform	5.170	83	477	0.37	ug/l	91
31) Cyclohexane	5.629	56	1563	1.49	ug/l #	32
32) 1,1,1-Trichloroethane	5.464	97	284	0.25	ug/l #	41
36) 1,1-Dichloropropene	5.629	75	4911	4.91	ug/l #	44
38) Carbon Tetrachloride	5.623	117	6201	5.77	ug/l #	17
42) 1,2-Dichloroethane	6.158	62	716	0.58	ug/l #	73
44) Trichloroethene	7.188	130	324878	433.41	ug/l	94
45) 1,2-Dichloropropane	7.488	63	30568	39.72	ug/l	97
48) Methyl methacrylate	7.488	41	20294	20.26	ug/l #	25
49) 1,4-Dioxane	7.718	88	20	1.12	ug/l #	61
55) 1,1,2-Trichloroethane	9.194	97	462	0.62	ug/l	96
57) 1,3-Dichloropropane	9.353	76	285	0.22	ug/l #	77
60) Dibromochloromethane	9.318	129	14214	17.14	ug/l #	11
64) Tetrachloroethene	9.318	164	14381	20.81	ug/l	95
76) 1,2,3-Trichloropropane	11.277	75	3880	3.86	ug/l	91
81) trans-1,4-Dichloro-2-b...	11.118	75	27915	84.51	ug/l #	12

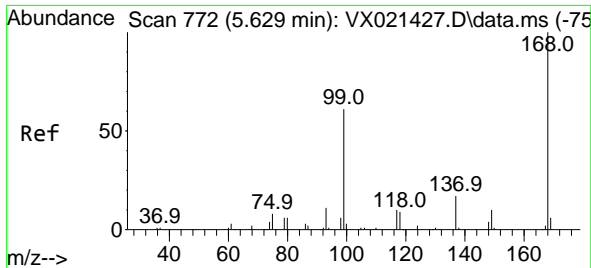
(#) = qualifier out of range (m) = manual integration (+) = signals summed

Data Path : Z:\voasrv\HPCHEM1\MSVOA\_X\Data\VX033121\  
 Data File : VX021682.D  
 Acq On : 31 Mar 2021 14:12  
 Operator : JC/MD  
 Sample : M1842-18  
 Misc : 5.0mL/MSVOA\_X/WATER  
 ALS Vial : 13 Sample Multiplier: 1

Instrument :  
 MSVOA\_X  
 ClientSampleId :

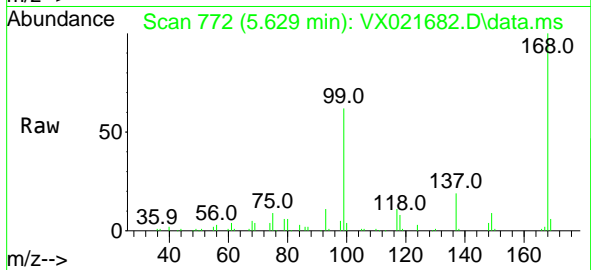
Quant Time: Apr 01 03:24:52 2021  
 Quant Method : Z:\voasrv\HPCHEM1\MSVOA\_X\Method\82X032421W.M  
 Quant Title : SW846 8260  
 QLast Update : Wed Mar 24 12:25:26 2021  
 Response via : Initial Calibration



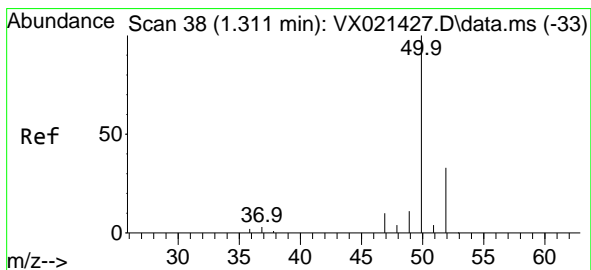
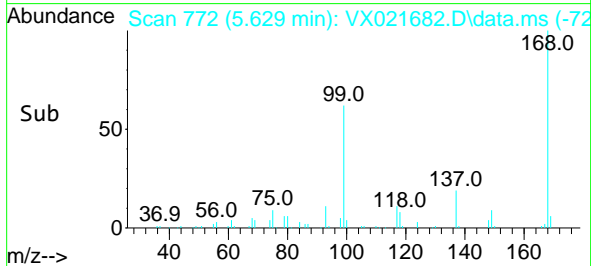
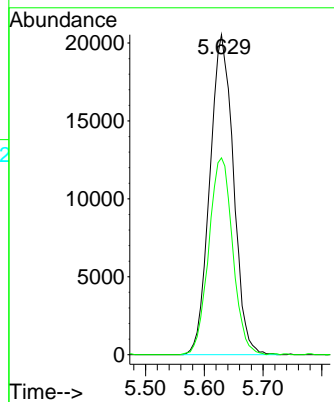


#1  
 Pentafluorobenzene  
 Concen: 50.00 ug/l  
 RT: 5.629 min Scan# 772  
 Delta R.T. 0.000 min  
 Lab File: VX021682.D  
 Acq: 31 Mar 2021 14:12

Instrument :  
 MSVOA\_X  
 ClientSampled :

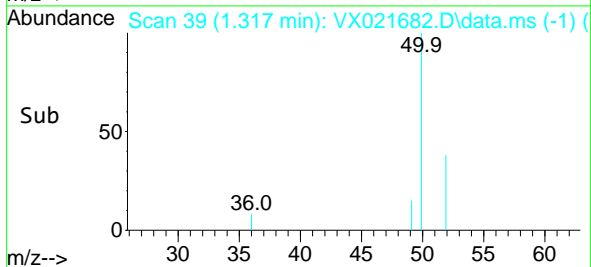
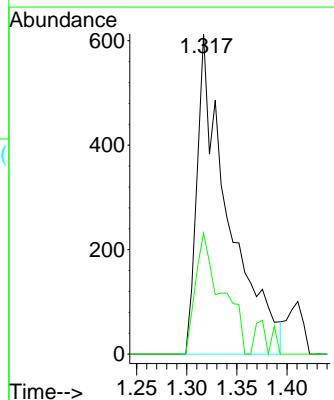
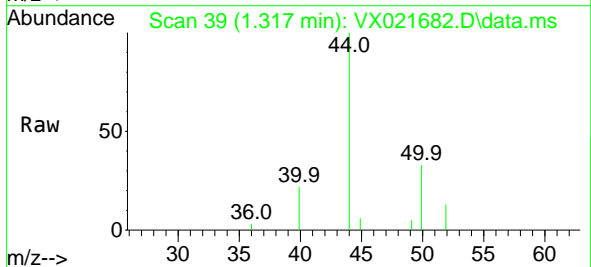


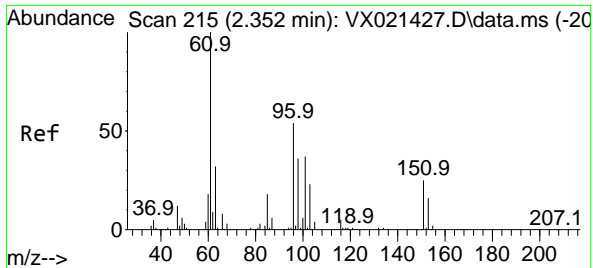
Tgt Ion:168 Resp: 57321  
 Ion Ratio Lower Upper  
 168 100  
 99 61.5 45.8 68.6



#3  
 Chloromethane  
 Concen: 1.85 ug/l  
 RT: 1.317 min Scan# 39  
 Delta R.T. 0.006 min  
 Lab File: VX021682.D  
 Acq: 31 Mar 2021 14:12

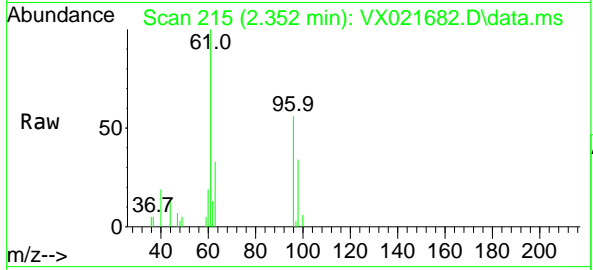
Tgt Ion: 50 Resp: 1314  
 Ion Ratio Lower Upper  
 50 100  
 52 37.8 26.4 39.6



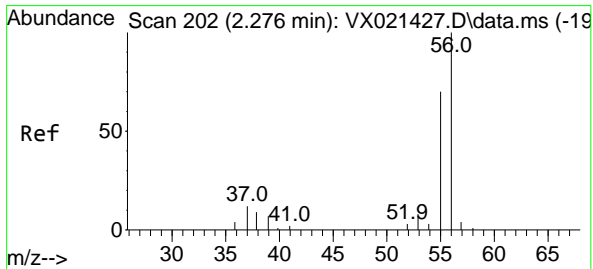
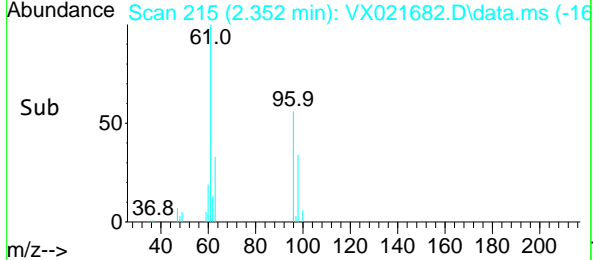
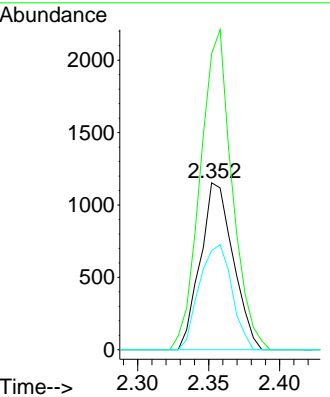


#12  
 1,1-Dichloroethene  
 Concen: 3.20 ug/l  
 RT: 2.352 min Scan# 215  
 Delta R.T. 0.000 min  
 Lab File: VX021682.D  
 Acq: 31 Mar 2021 14:12

Instrument :  
 MSVOA\_X  
 ClientSampled :

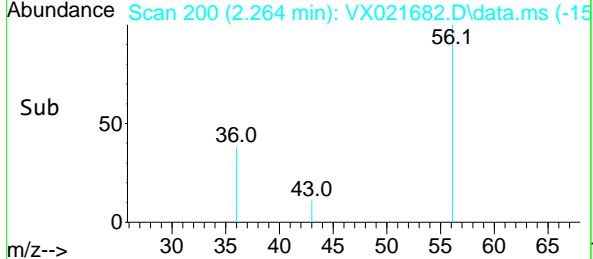
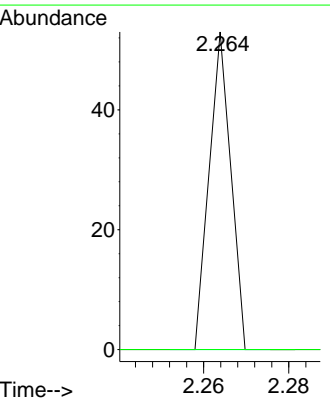
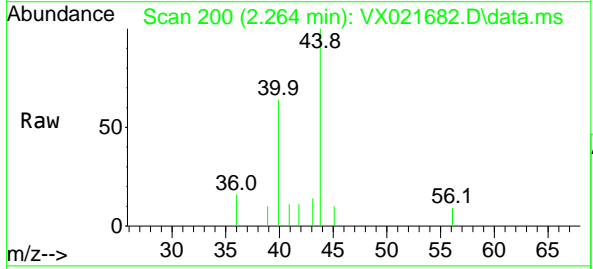


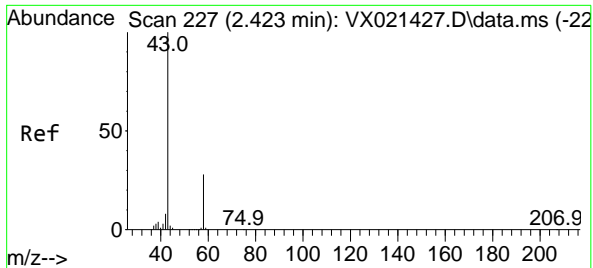
Tgt Ion: 96 Resp: 1847  
 Ion Ratio Lower Upper  
 96 100  
 61 177.4 124.6 187.0  
 98 59.5 50.6 76.0



#13  
 Acrolein  
 Concen: 4.53 ug/l  
 RT: 2.264 min Scan# 200  
 Delta R.T. -0.012 min  
 Lab File: VX021682.D  
 Acq: 31 Mar 2021 14:12

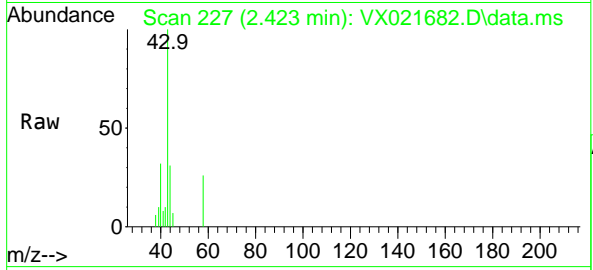
Tgt Ion: 56 Resp: 19  
 Ion Ratio Lower Upper  
 56 100  
 55 0.0 56.4 84.6#



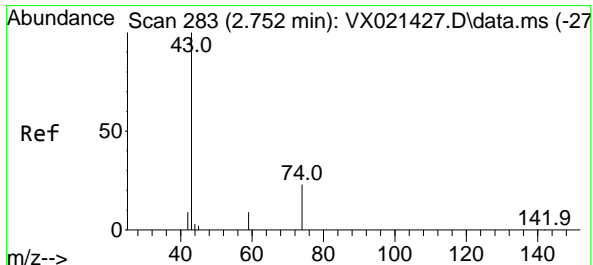
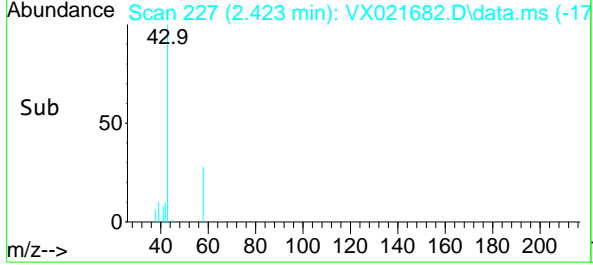
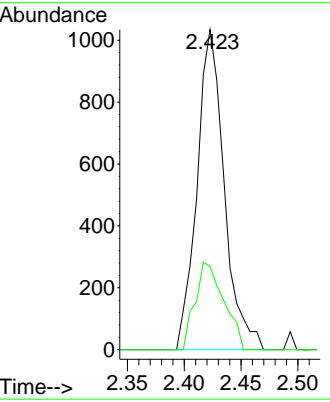


#16  
 Acetone  
 Concen: 4.78 ug/l  
 RT: 2.423 min Scan# 227  
 Delta R.T. -0.000 min  
 Lab File: VX021682.D  
 Acq: 31 Mar 2021 14:12

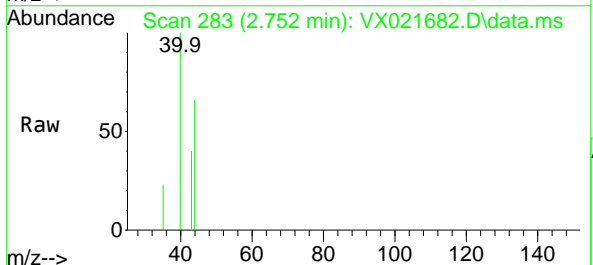
Instrument :  
 MSVOA\_X  
 ClientSampled :



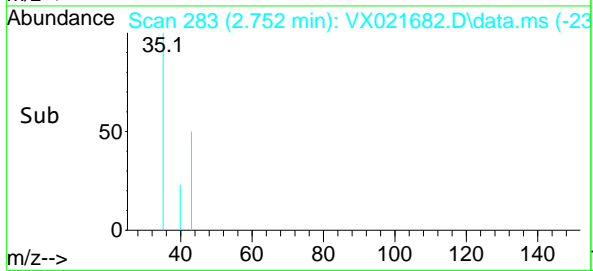
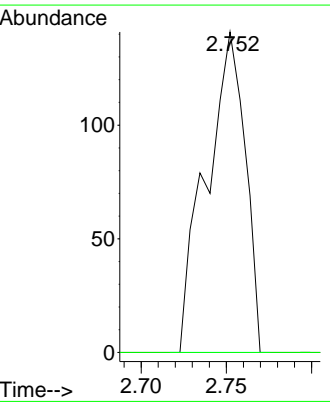
Tgt Ion: 43 Resp: 1725  
 Ion Ratio Lower Upper  
 43 100  
 58 26.0 27.8 41.8#

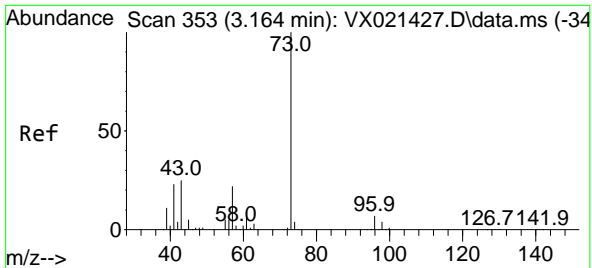


#18  
 Methyl Acetate  
 Concen: 0.22 ug/l  
 RT: 2.752 min Scan# 283  
 Delta R.T. 0.000 min  
 Lab File: VX021682.D  
 Acq: 31 Mar 2021 14:12



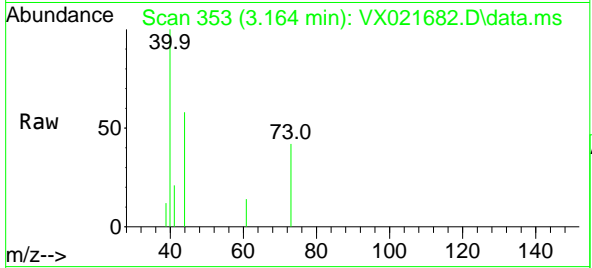
Tgt Ion: 43 Resp: 224  
 Ion Ratio Lower Upper  
 43 100  
 74 0.0 21.9 32.9#



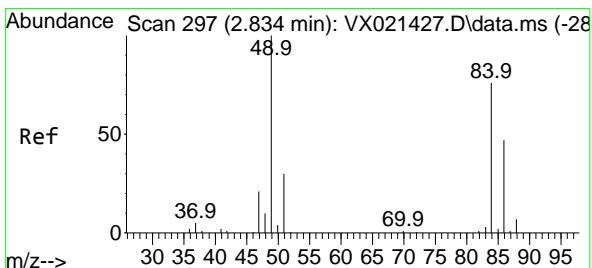
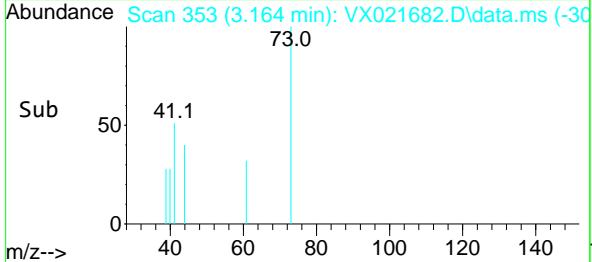
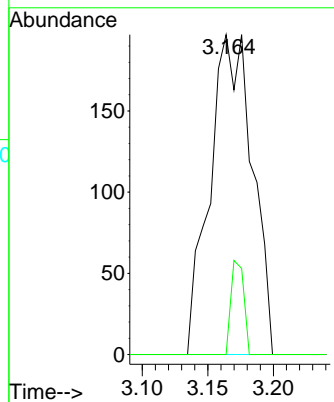


#19  
 Methyl tert-butyl Ether  
 Concen: 0.21 ug/l  
 RT: 3.164 min Scan# 353  
 Delta R.T. -0.000 min  
 Lab File: VX021682.D  
 Acq: 31 Mar 2021 14:12

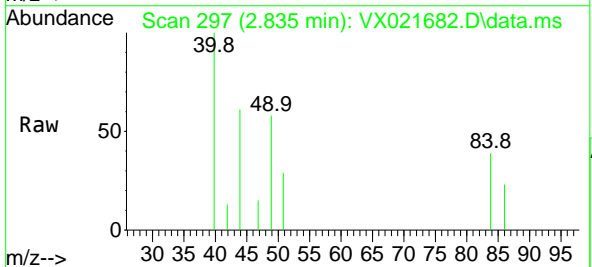
Instrument :  
 MSVOA\_X  
 ClientSampled :



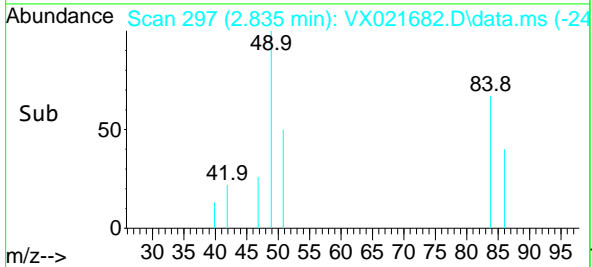
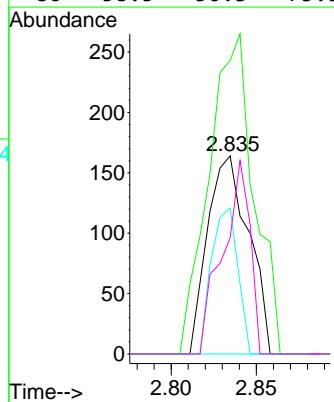
Tgt Ion: 73 Resp: 445  
 Ion Ratio Lower Upper  
 73 100  
 57 0.0 17.1 25.7#

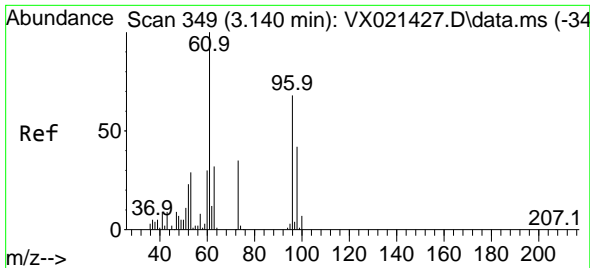


#20  
 Methylene Chloride  
 Concen: 0.39 ug/l  
 RT: 2.835 min Scan# 297  
 Delta R.T. 0.001 min  
 Lab File: VX021682.D  
 Acq: 31 Mar 2021 14:12



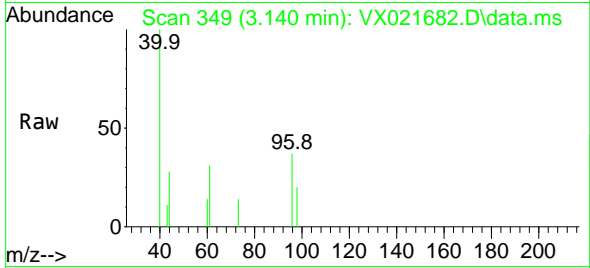
Tgt Ion: 84 Resp: 275  
 Ion Ratio Lower Upper  
 84 100  
 49 148.2 88.6 132.8#  
 51 73.8 27.0 40.6#  
 86 58.5 50.3 75.5



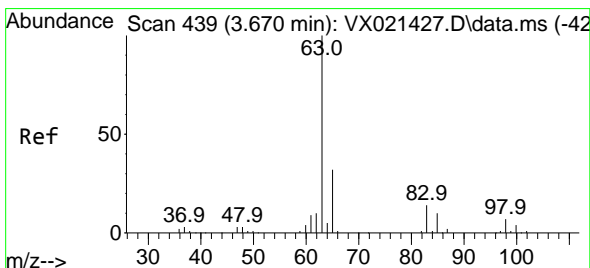
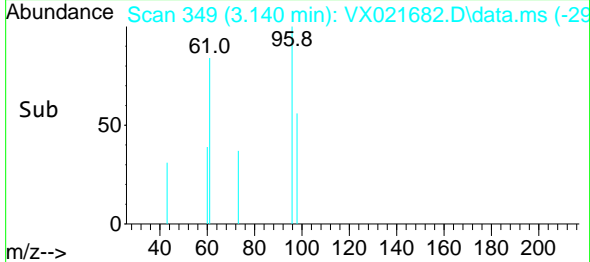
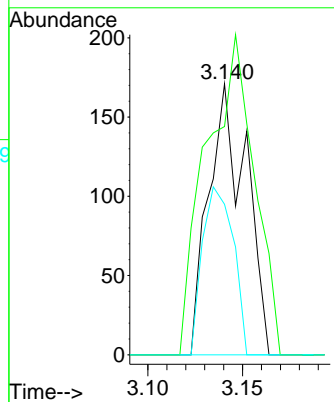


#21  
 trans-1,2-Dichloroethene  
 Concen: 0.37 ug/l  
 RT: 3.140 min Scan# 349  
 Delta R.T. 0.000 min  
 Lab File: VX021682.D  
 Acq: 31 Mar 2021 14:12

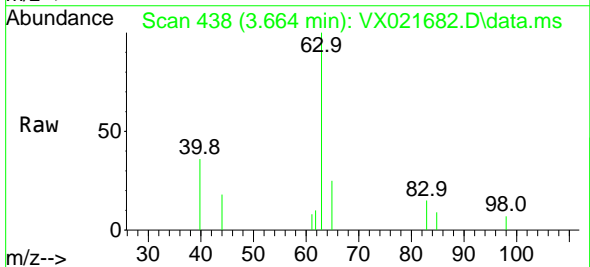
Instrument :  
 MSVOA\_X  
 ClientSampled :



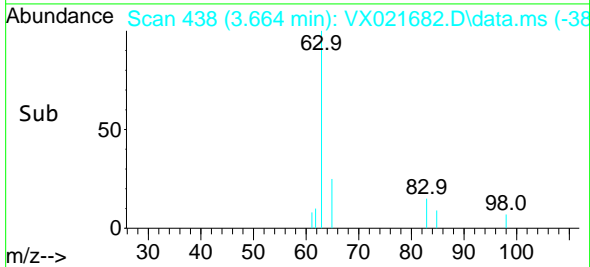
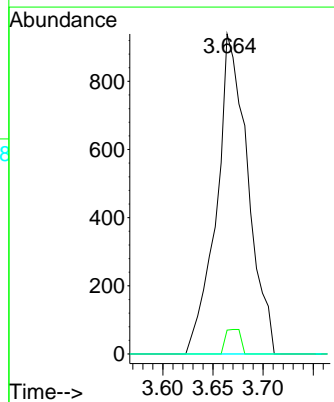
Tgt Ion: 96 Resp: 235  
 Ion Ratio Lower Upper  
 96 100  
 61 84.2 107.7 161.5#  
 98 55.6 50.4 75.6

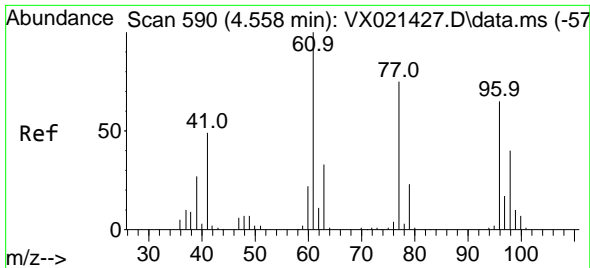


#24  
 1,1-Dichloroethane  
 Concen: 1.66 ug/l  
 RT: 3.664 min Scan# 438  
 Delta R.T. -0.006 min  
 Lab File: VX021682.D  
 Acq: 31 Mar 2021 14:12



Tgt Ion: 63 Resp: 2038  
 Ion Ratio Lower Upper  
 63 100  
 98 7.5 3.8 11.2  
 100 0.0 2.5 7.5#

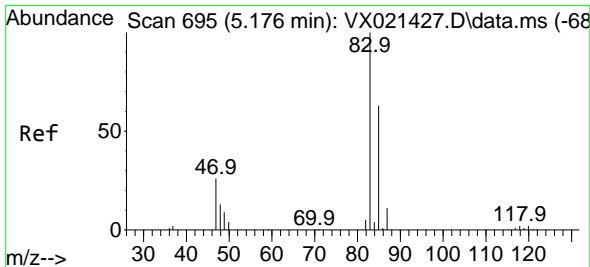
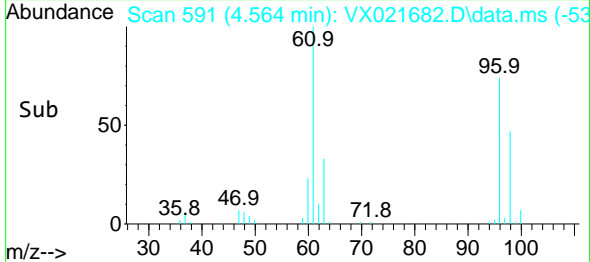
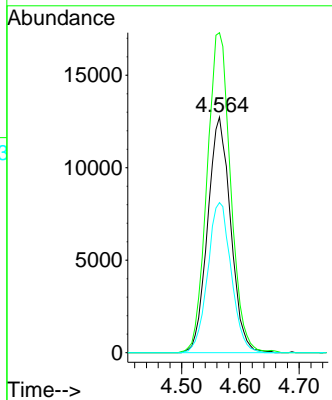
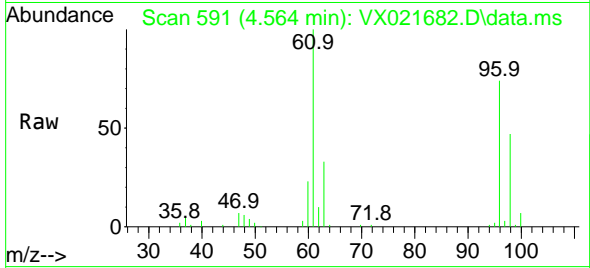




#27  
 cis-1,2-Dichloroethene  
 Concen: 47.03 ug/l  
 RT: 4.564 min Scan# 591  
 Delta R.T. 0.006 min  
 Lab File: VX021682.D  
 Acq: 31 Mar 2021 14:12

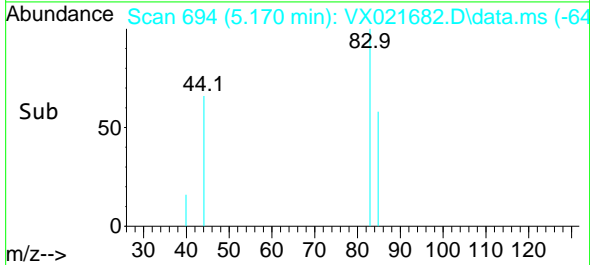
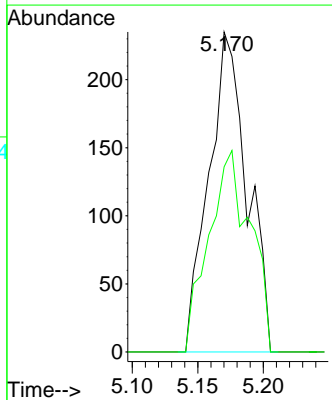
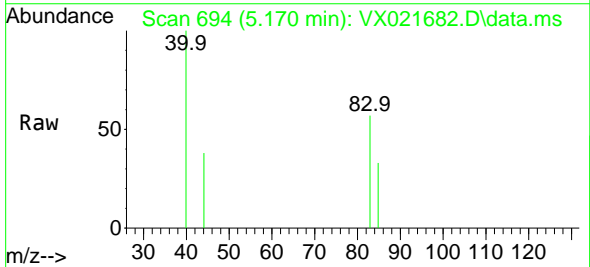
Instrument :  
 MSVOA\_X  
 ClientSampled :

Tgt Ion	Resp	Lower	Upper
96	34649		
96	100		
61	138.8	0.0	285.6
98	65.1	0.0	129.6

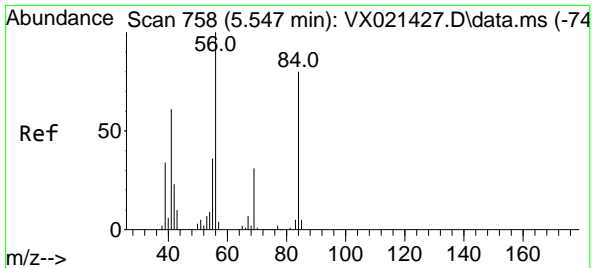


#30  
 Chloroform  
 Concen: 0.37 ug/l  
 RT: 5.170 min Scan# 694  
 Delta R.T. -0.006 min  
 Lab File: VX021682.D  
 Acq: 31 Mar 2021 14:12

Tgt Ion	Resp	Lower	Upper
83	477		
83	100		
85	57.9	52.0	78.0

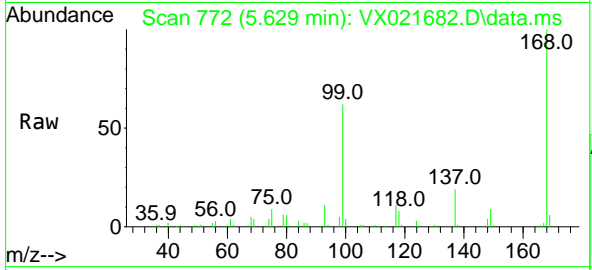






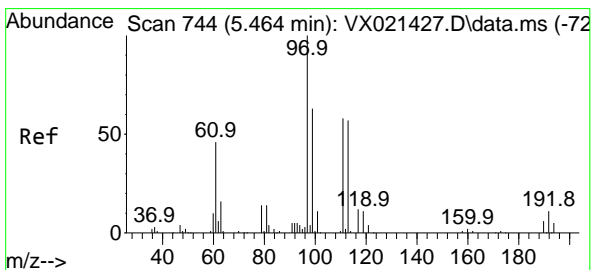
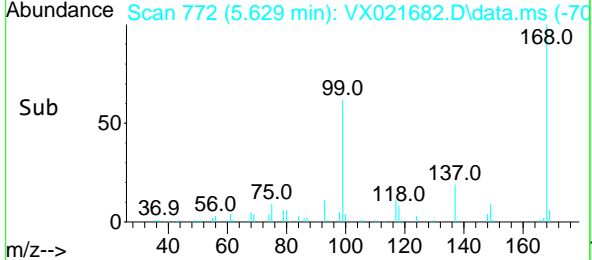
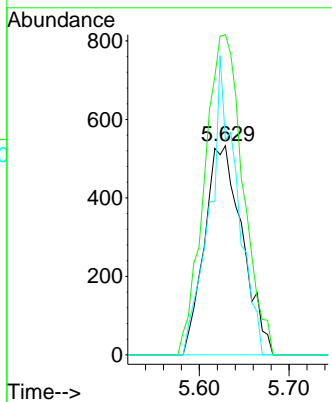
#31  
 Cyclohexane  
 Concen: 1.49 ug/l  
 RT: 5.629 min Scan# 772  
 Delta R.T. 0.082 min  
 Lab File: VX021682.D  
 Acq: 31 Mar 2021 14:12

Instrument :  
 MSVOA\_X  
 ClientSampled :

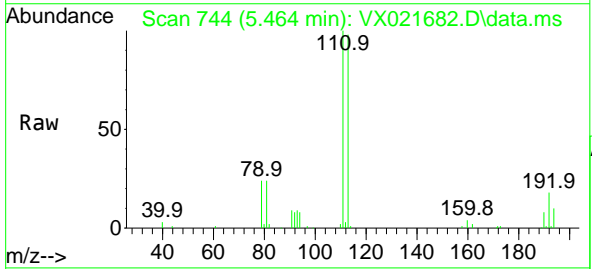


Tgt Ion: 56 Resp: 1563

Ion	Ratio	Lower	Upper
56	100		
69	153.1	25.3	37.9#
84	102.8	71.4	107.0

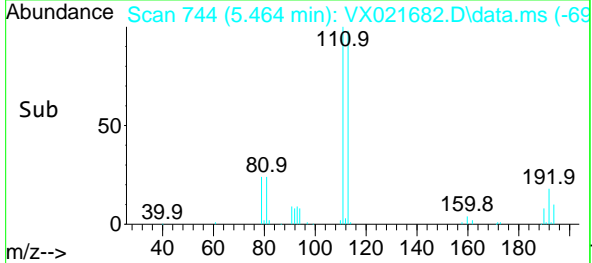
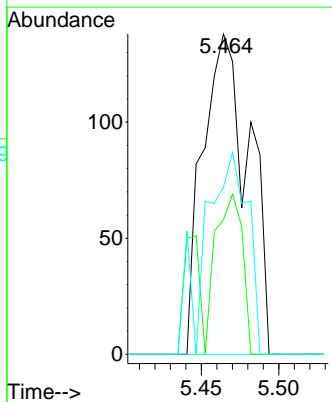


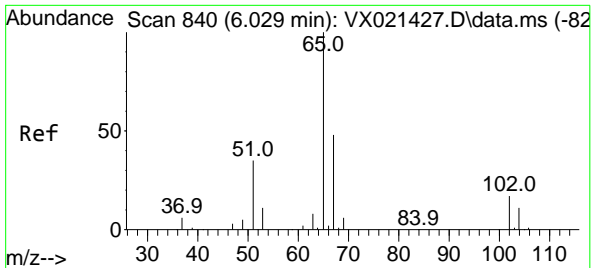
#32  
 1,1,1-Trichloroethane  
 Concen: 0.25 ug/l  
 RT: 5.464 min Scan# 744  
 Delta R.T. 0.000 min  
 Lab File: VX021682.D  
 Acq: 31 Mar 2021 14:12



Tgt Ion: 97 Resp: 284

Ion	Ratio	Lower	Upper
97	100		
99	0.0	51.5	77.3#
61	58.8	34.2	51.4#

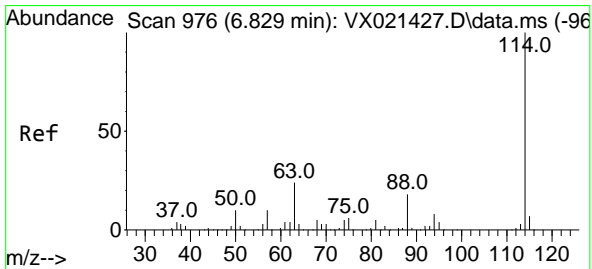
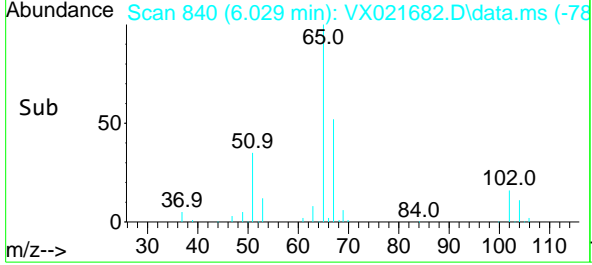
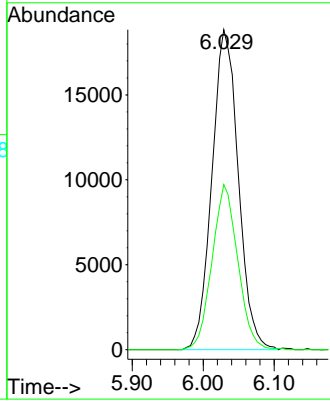
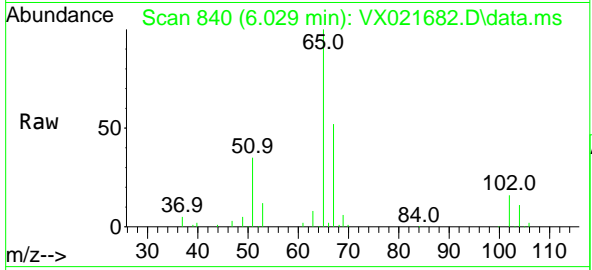




#33  
 1,2-Dichloroethane-d4  
 Concen: 50.86 ug/l  
 RT: 6.029 min Scan# 840  
 Delta R.T. 0.000 min  
 Lab File: VX021682.D  
 Acq: 31 Mar 2021 14:12

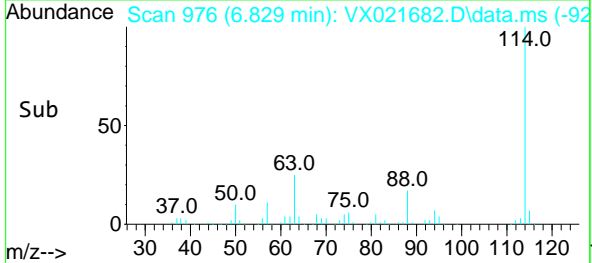
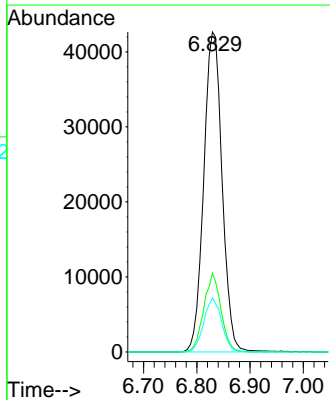
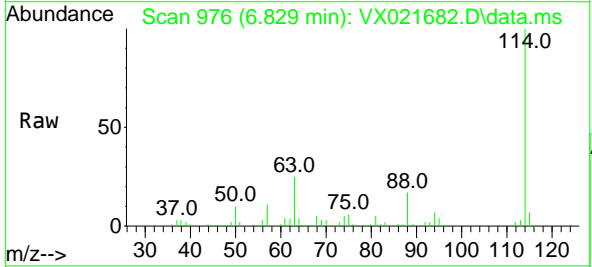
Instrument :  
 MSVOA\_X  
 ClientSampled :

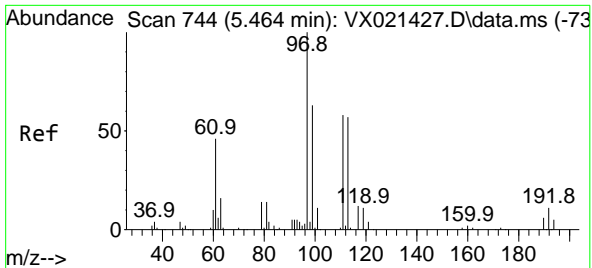
Tgt Ion	Resp	Lower	Upper
65	48507	100	105.4
67	50.4	0.0	105.4



#34  
 1,4-Difluorobenzene  
 Concen: 50.00 ug/l  
 RT: 6.829 min Scan# 976  
 Delta R.T. 0.000 min  
 Lab File: VX021682.D  
 Acq: 31 Mar 2021 14:12

Tgt Ion	Resp	Lower	Upper
114	102090	100	105.4
63	24.6	0.0	40.8
88	16.9	0.0	32.8

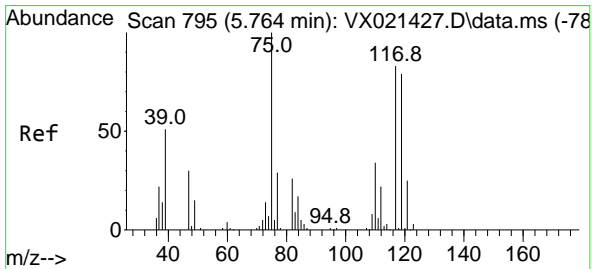
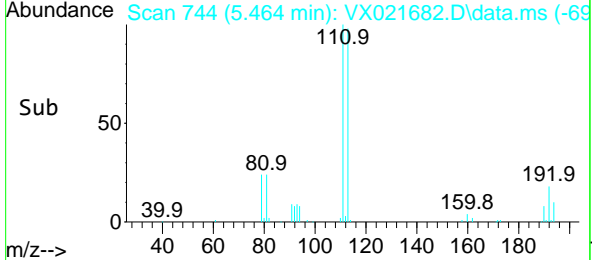
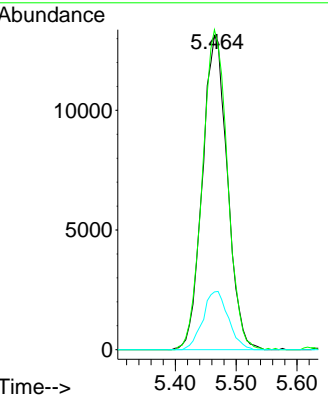
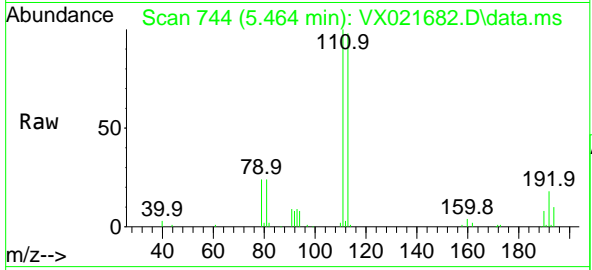




#35  
 Dibromofluoromethane  
 Concen: 51.59 ug/l  
 RT: 5.464 min Scan# 744  
 Delta R.T. 0.000 min  
 Lab File: VX021682.D  
 Acq: 31 Mar 2021 14:12

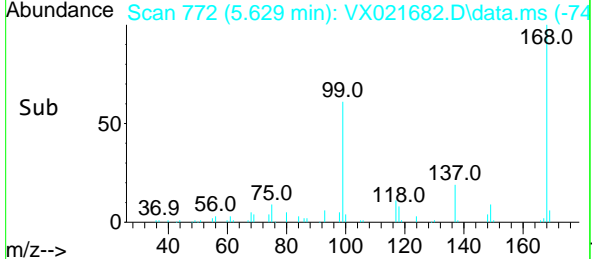
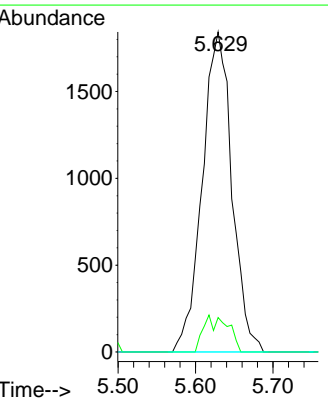
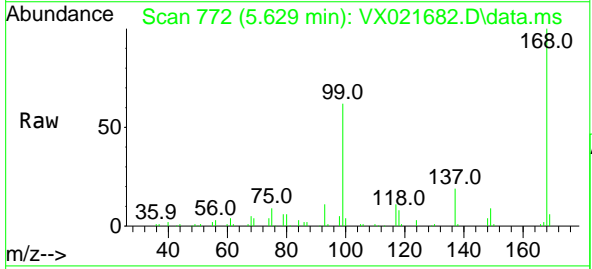
Instrument :  
 MSVOA\_X  
 ClientSampled :

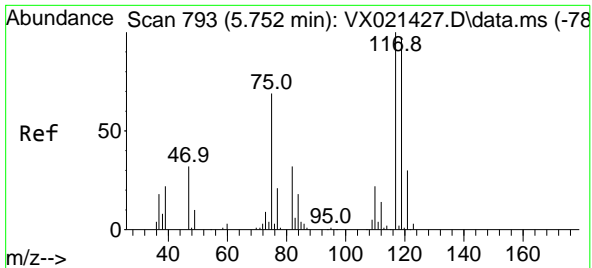
Tgt Ion	Resp	Lower	Upper
113	37413		
113	100		
111	102.2	81.9	122.9
192	18.8	16.7	25.1



#36  
 1,1-Dichloropropene  
 Concen: 4.91 ug/l  
 RT: 5.629 min Scan# 772  
 Delta R.T. -0.135 min  
 Lab File: VX021682.D  
 Acq: 31 Mar 2021 14:12

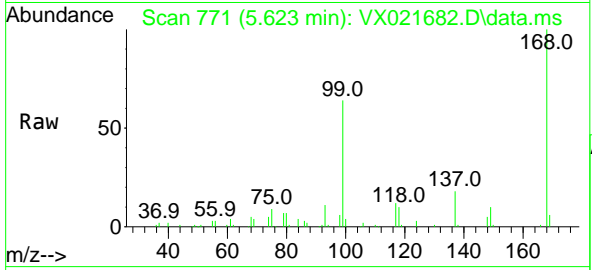
Tgt Ion	Resp	Lower	Upper
75	4911		
75	100		
110	4.2	18.1	54.4#
77	0.0	25.3	37.9#



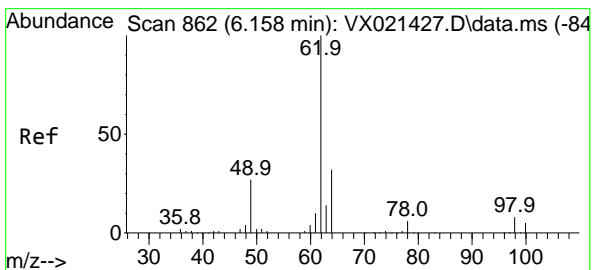
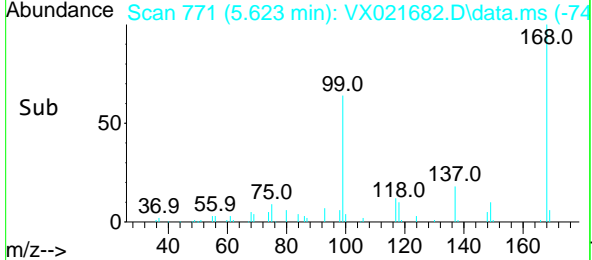
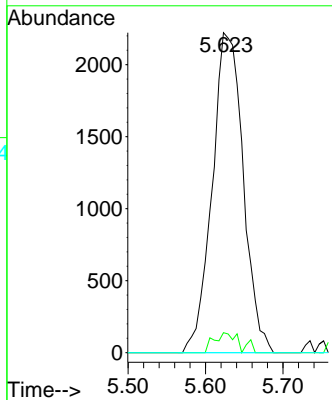


#38  
 Carbon Tetrachloride  
 Concen: 5.77 ug/l  
 RT: 5.623 min Scan# 771  
 Delta R.T. -0.129 min  
 Lab File: VX021682.D  
 Acq: 31 Mar 2021 14:12

Instrument :  
 MSVOA\_X  
 ClientSampled :

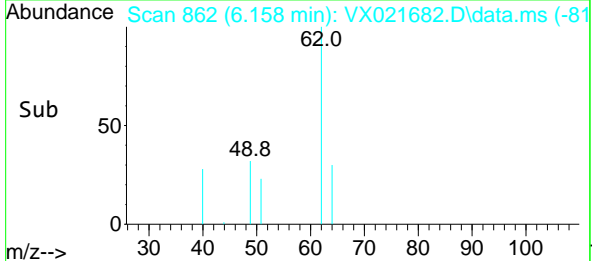
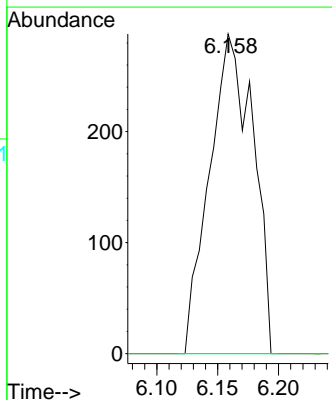
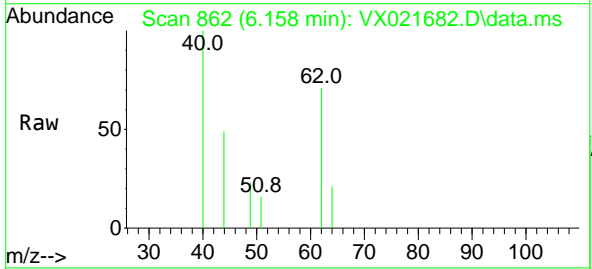


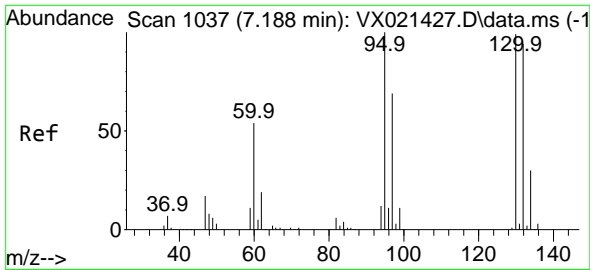
Tgt Ion:117 Resp: 6201  
 Ion Ratio Lower Upper  
 117 100  
 119 6.3 76.2 114.2#  
 121 0.0 24.8 37.2#



#42  
 1,2-Dichloroethane  
 Concen: 0.58 ug/l  
 RT: 6.158 min Scan# 862  
 Delta R.T. 0.000 min  
 Lab File: VX021682.D  
 Acq: 31 Mar 2021 14:12

Tgt Ion: 62 Resp: 716  
 Ion Ratio Lower Upper  
 62 100  
 98 0.0 0.0 20.2

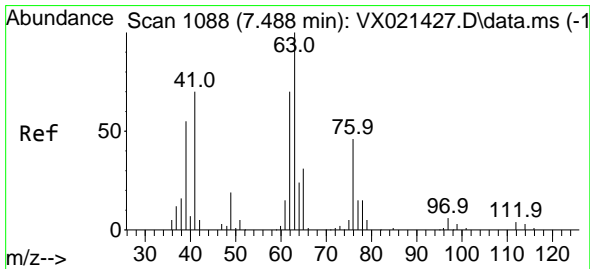
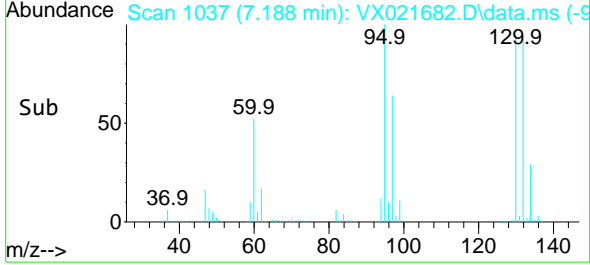
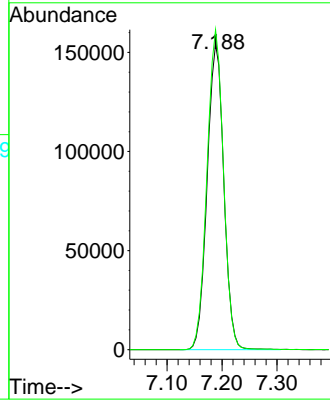
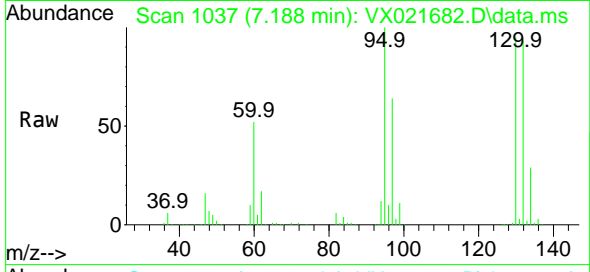




#44  
 Trichloroethene  
 Concen: 433.41 ug/l  
 RT: 7.188 min Scan# 1037  
 Delta R.T. 0.000 min  
 Lab File: VX021682.D  
 Acq: 31 Mar 2021 14:12

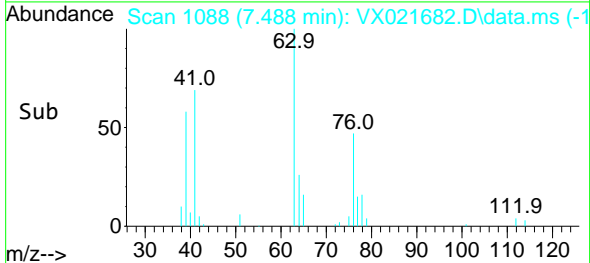
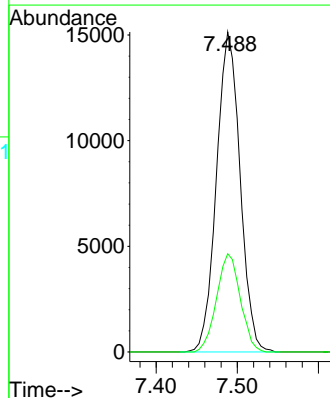
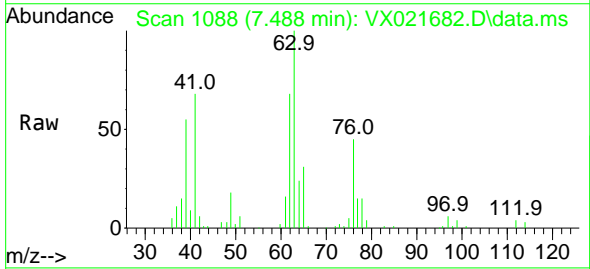
Instrument :  
 MSVOA\_X  
 ClientSampled :

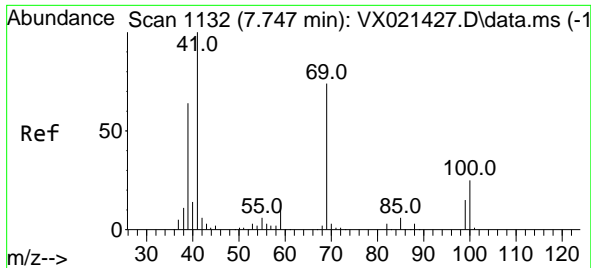
Tgt Ion:130 Resp: 324878  
 Ion Ratio Lower Upper  
 130 100  
 95 104.7 0.0 198.0



#45  
 1,2-Dichloropropane  
 Concen: 39.72 ug/l  
 RT: 7.488 min Scan# 1088  
 Delta R.T. 0.000 min  
 Lab File: VX021682.D  
 Acq: 31 Mar 2021 14:12

Tgt Ion: 63 Resp: 30568  
 Ion Ratio Lower Upper  
 63 100  
 65 30.7 25.7 38.5

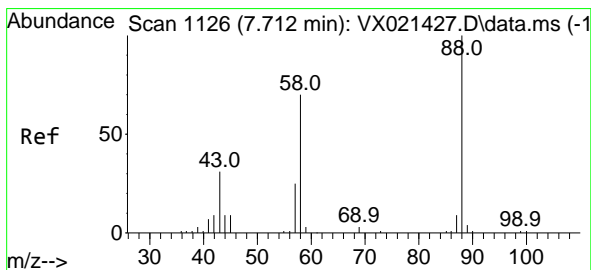
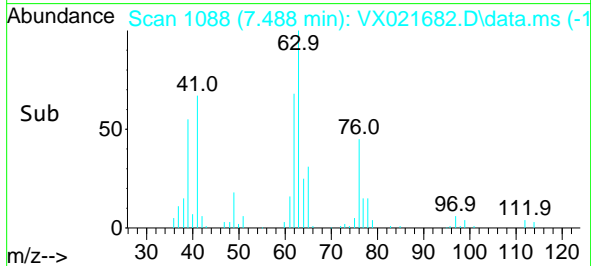
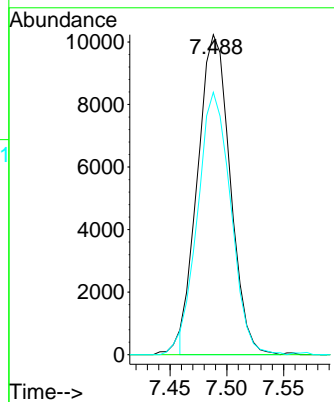
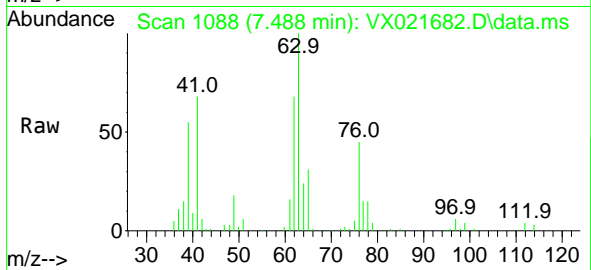




#48  
 Methyl methacrylate  
 Concen: 20.26 ug/l  
 RT: 7.488 min Scan# 1088  
 Delta R.T. -0.259 min  
 Lab File: VX021682.D  
 Acq: 31 Mar 2021 14:12

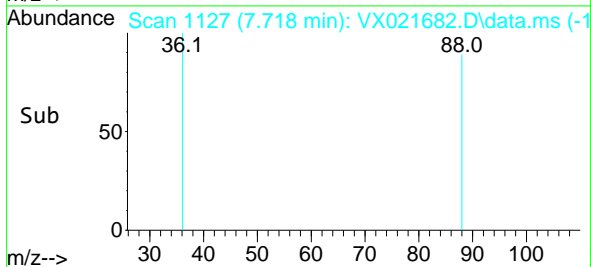
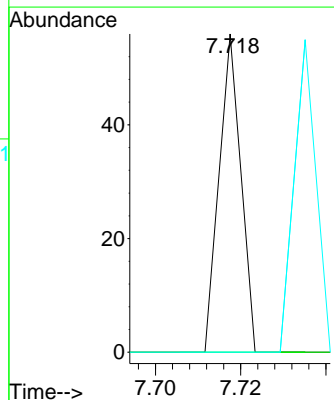
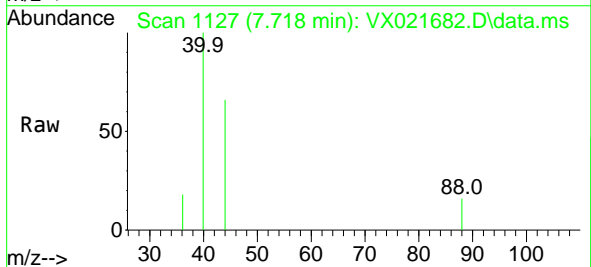
Instrument :  
 MSVOA\_X  
 ClientSampled :

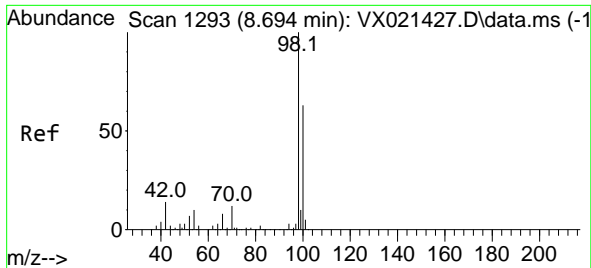
Tgt Ion	Resp	Lower	Upper
41	100		
69	0.0	76.0	114.0#
39	82.9	44.6	67.0#



#49  
 1,4-Dioxane  
 Concen: 1.12 ug/l  
 RT: 7.718 min Scan# 1127  
 Delta R.T. 0.006 min  
 Lab File: VX021682.D  
 Acq: 31 Mar 2021 14:12

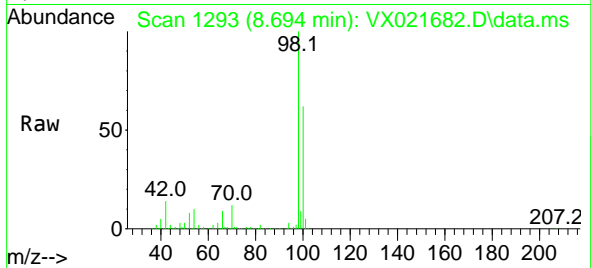
Tgt Ion	Resp	Lower	Upper
88	100		
43	0.0	23.2	34.8#
58	95.0	55.0	82.4#



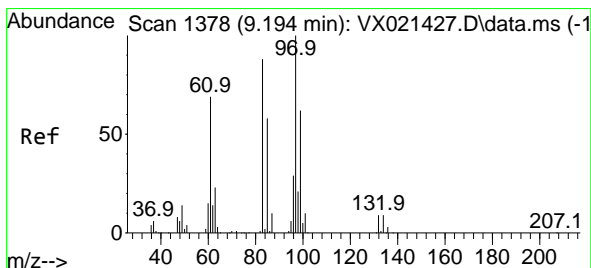
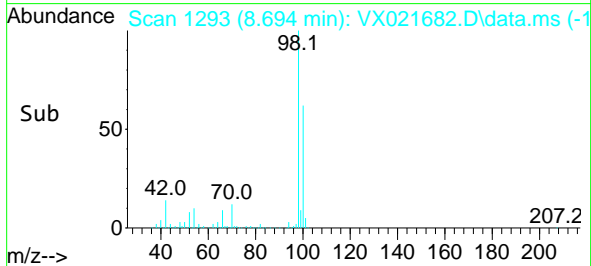
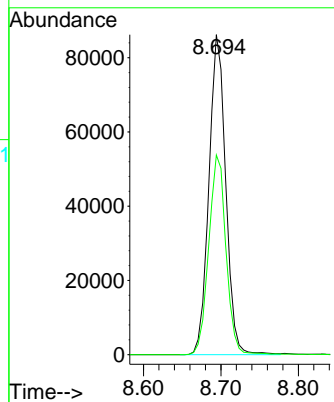


#50  
 Toluene-d8  
 Concen: 50.33 ug/l  
 RT: 8.694 min Scan# 1293  
 Delta R.T. 0.000 min  
 Lab File: VX021682.D  
 Acq: 31 Mar 2021 14:12

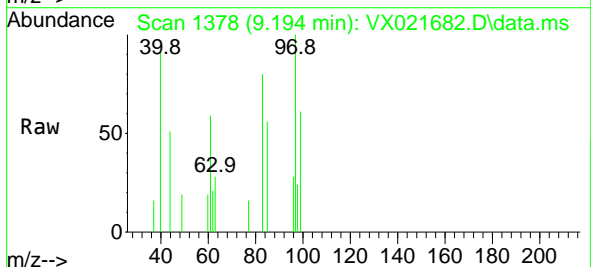
Instrument :  
 MSVOA\_X  
 ClientSampled :



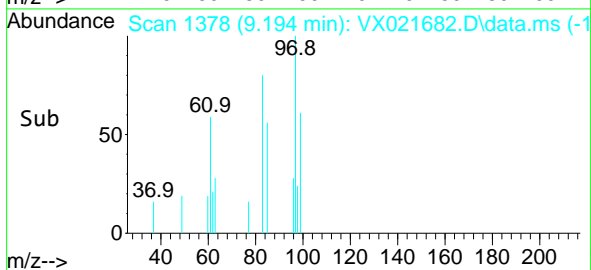
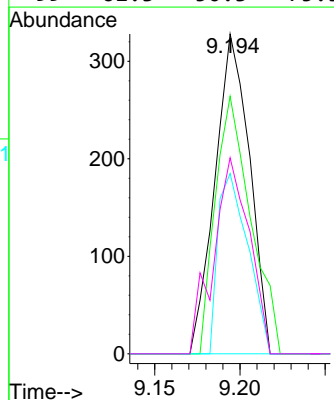
Tgt Ion: 98 Resp: 130066  
 Ion Ratio Lower Upper  
 98 100  
 100 64.1 51.9 77.9

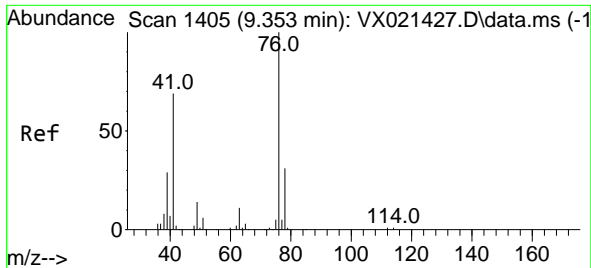


#55  
 1,1,2-Trichloroethane  
 Concen: 0.62 ug/l  
 RT: 9.194 min Scan# 1378  
 Delta R.T. 0.000 min  
 Lab File: VX021682.D  
 Acq: 31 Mar 2021 14:12



Tgt Ion: 97 Resp: 462  
 Ion Ratio Lower Upper  
 97 100  
 83 80.5 69.3 103.9  
 85 56.4 44.3 66.5  
 99 61.3 50.3 75.5

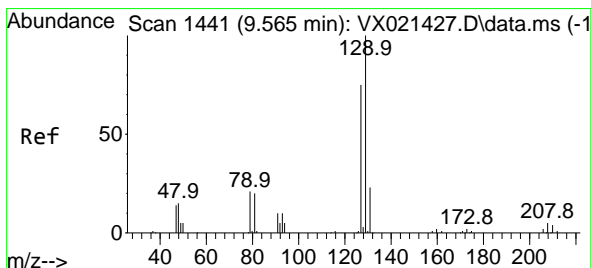
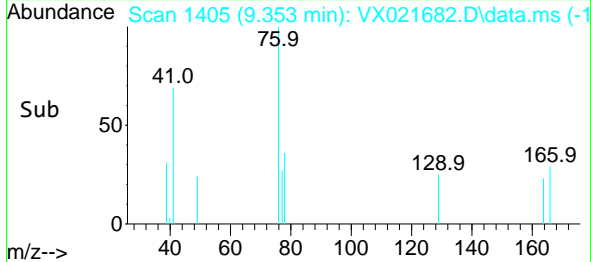
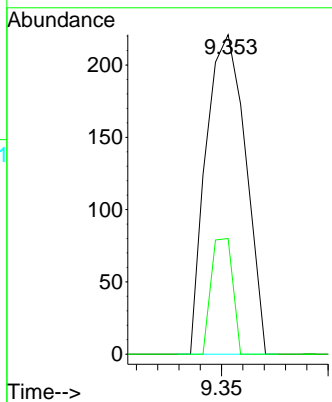
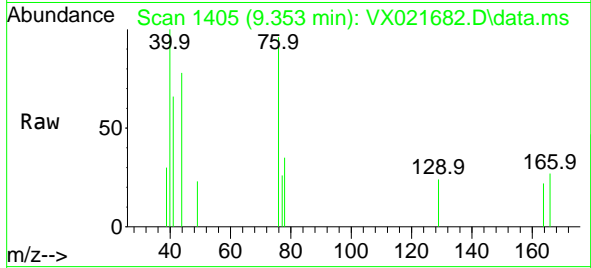




#57  
 1,3-Dichloropropane  
 Concen: 0.22 ug/l  
 RT: 9.353 min Scan# 1405  
 Delta R.T. 0.000 min  
 Lab File: VX021682.D  
 Acq: 31 Mar 2021 14:12

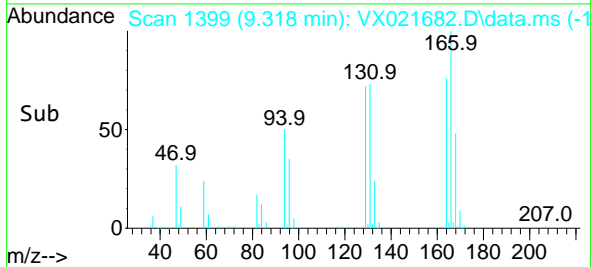
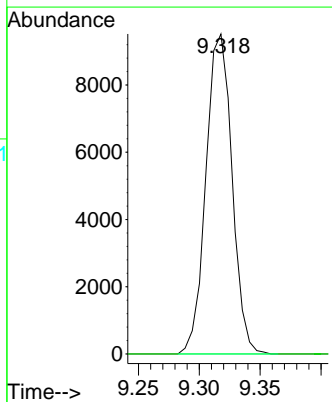
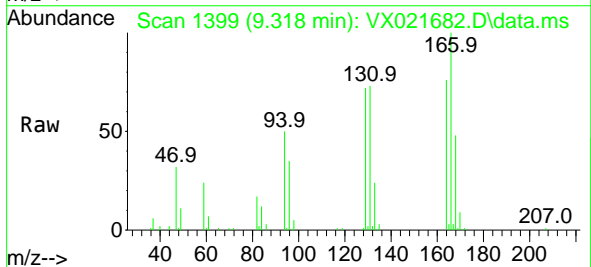
Instrument :  
 MSVOA\_X  
 ClientSampled :

Tgt Ion: 76 Resp: 285  
 Ion Ratio Lower Upper  
 76 100  
 78 19.6 26.2 39.2#

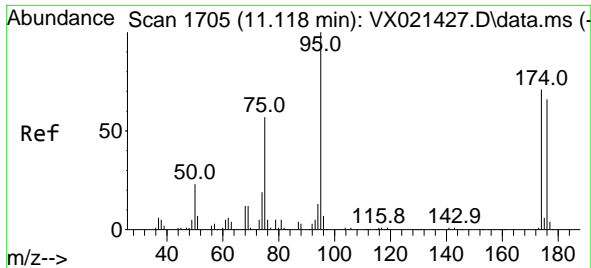


#60  
 Dibromochloromethane  
 Concen: 17.14 ug/l  
 RT: 9.318 min Scan# 1399  
 Delta R.T. -0.247 min  
 Lab File: VX021682.D  
 Acq: 31 Mar 2021 14:12

Tgt Ion:129 Resp: 14214  
 Ion Ratio Lower Upper  
 129 100  
 127 0.0 38.4 115.2#



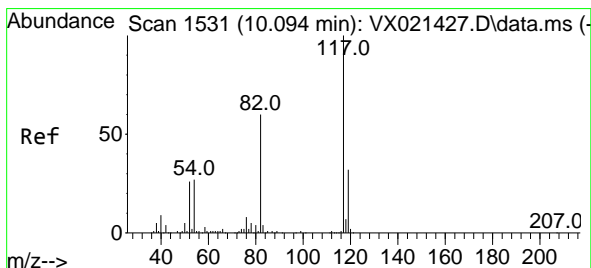
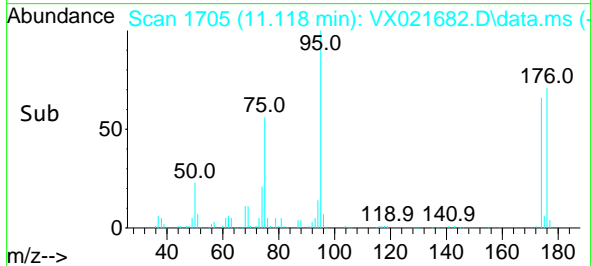
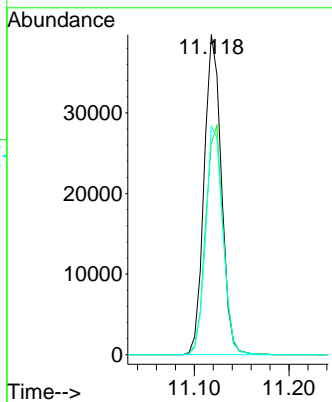
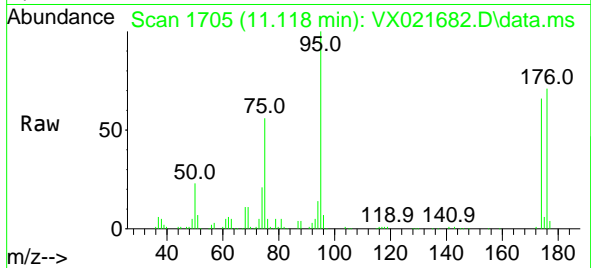




#62  
 4-Bromofluorobenzene  
 Concen: 49.87 ug/l  
 RT: 11.118 min Scan# 1705  
 Delta R.T. -0.000 min  
 Lab File: VX021682.D  
 Acq: 31 Mar 2021 14:12

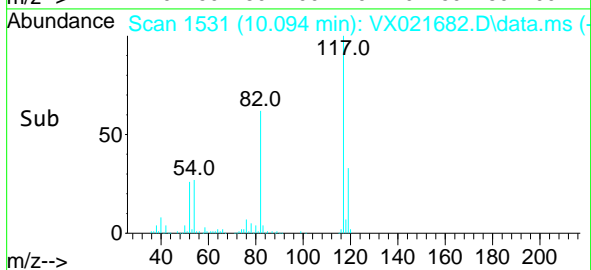
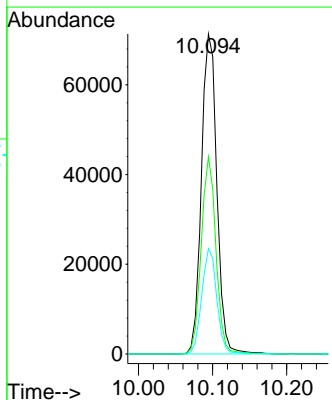
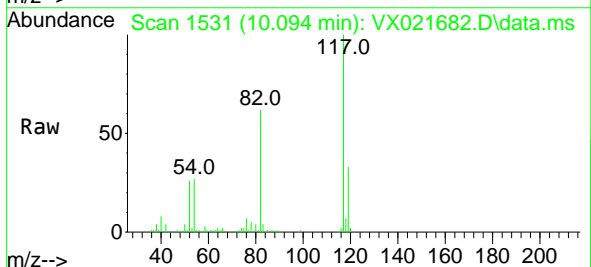
Instrument :  
 MSVOA\_X  
 ClientSampled :

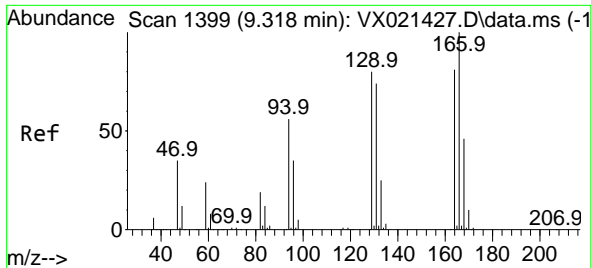
Tgt Ion	Resp	Lower	Upper
95	50107	100	
174	73.2	0.0	154.6
176	71.3	0.0	155.8



#63  
 Chlorobenzene-d5  
 Concen: 50.00 ug/l  
 RT: 10.094 min Scan# 1531  
 Delta R.T. 0.000 min  
 Lab File: VX021682.D  
 Acq: 31 Mar 2021 14:12

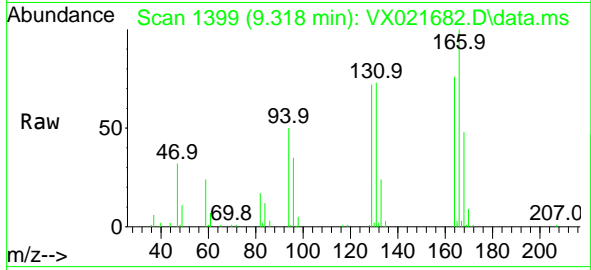
Tgt Ion	Resp	Lower	Upper
117	103150	100	
82	61.6	47.4	71.2
119	32.9	26.6	39.8





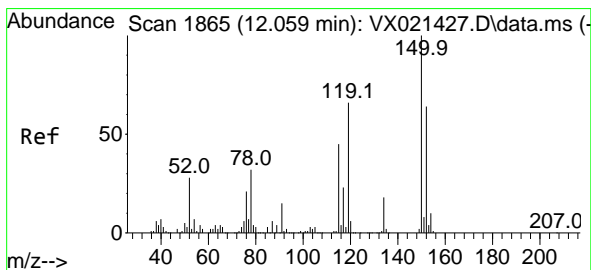
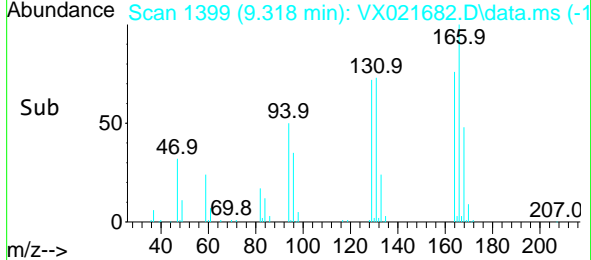
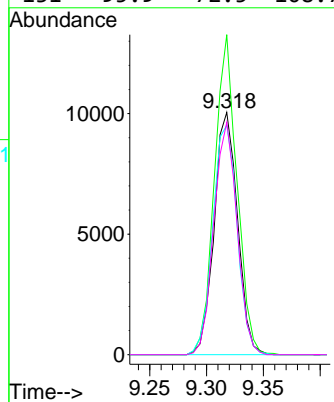
#64  
 Tetrachloroethene  
 Concen: 20.81 ug/l  
 RT: 9.318 min Scan# 1399  
 Delta R.T. -0.000 min  
 Lab File: VX021682.D  
 Acq: 31 Mar 2021 14:12

Instrument :  
 MSVOA\_X  
 ClientSampled :

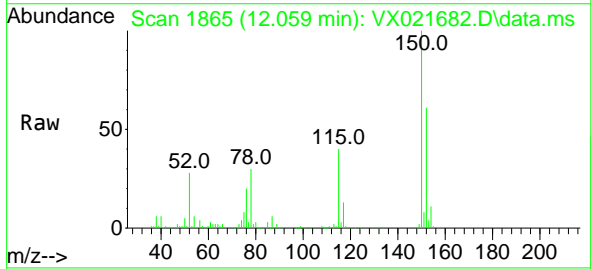


Tgt Ion:164 Resp: 14381

Ion	Ratio	Lower	Upper
164	100		
166	132.1	103.4	155.2
129	94.8	70.8	106.2
131	95.9	72.5	108.7

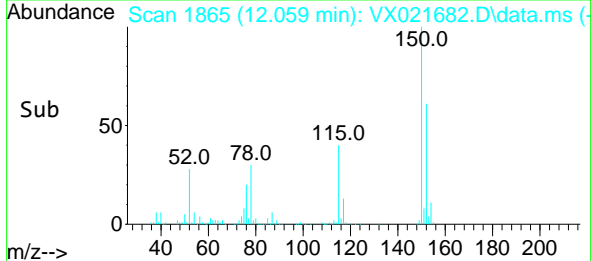
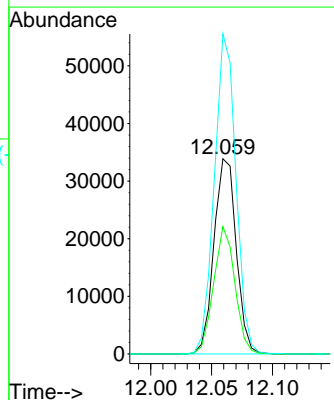


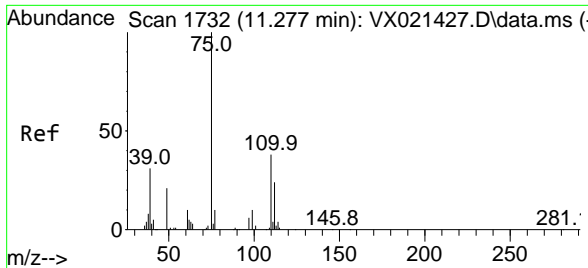
#72  
 1,4-Dichlorobenzene-d4  
 Concen: 50.00 ug/l  
 RT: 12.059 min Scan# 1865  
 Delta R.T. 0.000 min  
 Lab File: VX021682.D  
 Acq: 31 Mar 2021 14:12



Tgt Ion:152 Resp: 43217

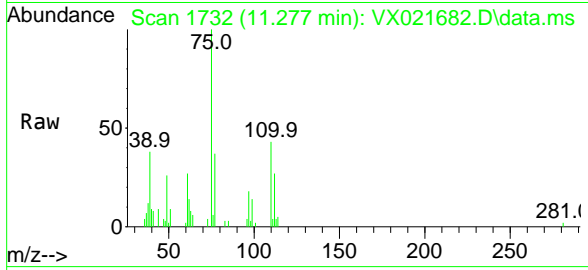
Ion	Ratio	Lower	Upper
152	100		
115	62.1	41.1	123.3
150	158.2	0.0	349.0



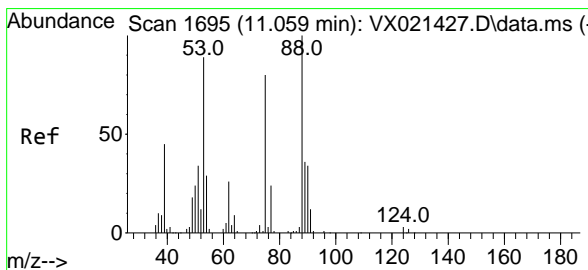
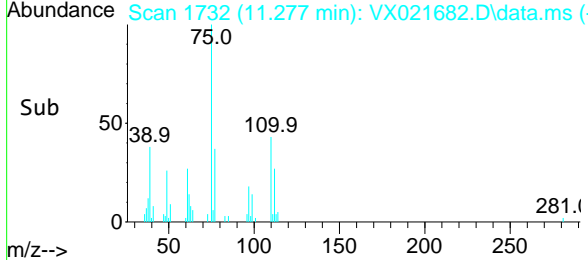
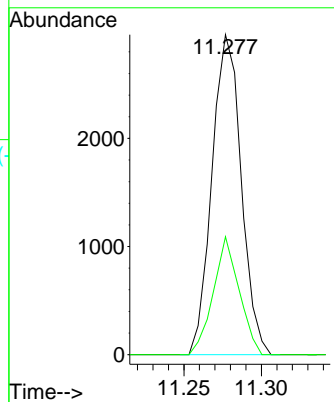


#76  
 1,2,3-Trichloropropane  
 Concen: 3.86 ug/l  
 RT: 11.277 min Scan# 1732  
 Delta R.T. -0.000 min  
 Lab File: VX021682.D  
 Acq: 31 Mar 2021 14:12

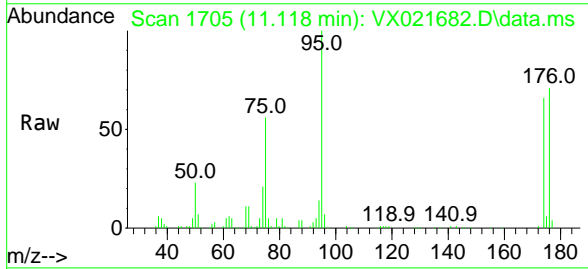
Instrument :  
 MSVOA\_X  
 ClientSampled :



Tgt Ion: 75 Resp: 3880  
 Ion Ratio Lower Upper  
 75 100  
 77 32.6 19.1 57.5



#81  
 trans-1,4-Dichloro-2-butene  
 Concen: 84.51 ug/l  
 RT: 11.118 min Scan# 1705  
 Delta R.T. 0.059 min  
 Lab File: VX021682.D  
 Acq: 31 Mar 2021 14:12



Tgt Ion: 75 Resp: 27915  
 Ion Ratio Lower Upper  
 75 100  
 53 0.0 74.5 111.7#  
 89 0.0 37.9 56.9#

