

Data Path : Z:\VOASRV\HPCHEM1\MSVOA X\DATA\VX040119\
 Data File : VX008579.D
 Acq On : 01 Apr 2019 19:16
 Operator : JC/SP
 Sample : K2210-04
 Misc : 5.0mL/MSVOA X/WATER
 ALS Vial : 21 Sample Multiplier: 1

Instrument :
 MSVOA_X
 ClientSampled :
 WE-6

Quant Time: Apr 02 01:14:53 2019
 Quant Method : Z:\VOASRV\HPCHEM1\MSVOA_X\METHOD\82X032519W.M
 Quant Title : SW846 8260
 QLast Update : Tue Mar 26 07:57:20 2019
 Response via : Initial Calibration

Internal Standards	R.T.	QIon	Response	Conc	Units	Dev(Min)
1) Pentafluorobenzene	5.67	168	224101	50.00	ug/l	0.00
34) 1,4-Difluorobenzene	6.86	114	377805	50.00	ug/l	0.00
63) Chlorobenzene-d5	10.11	117	326778	50.00	ug/l	0.00
72) 1,4-Dichlorobenzene-d4	12.08	152	137011	50.00	ug/l	0.00

System Monitoring Compounds	R.T.	QIon	Response	Conc	Units	Dev(Min)
33) 1,2-Dichloroethane-d4	6.06	65	158227	46.57	ug/l	0.00
Spiked Amount				50.000		
Recovery						93.14%
35) Dibromofluoromethane	5.50	113	115930	47.06	ug/l	0.00
Spiked Amount				50.000		
Recovery						94.12%
50) Toluene-d8	8.71	98	473023	48.02	ug/l	0.00
Spiked Amount				50.000		
Recovery						96.04%
62) 4-Bromofluorobenzene	11.13	95	162080	44.40	ug/l	0.00
Spiked Amount				50.000		
Recovery						88.80%

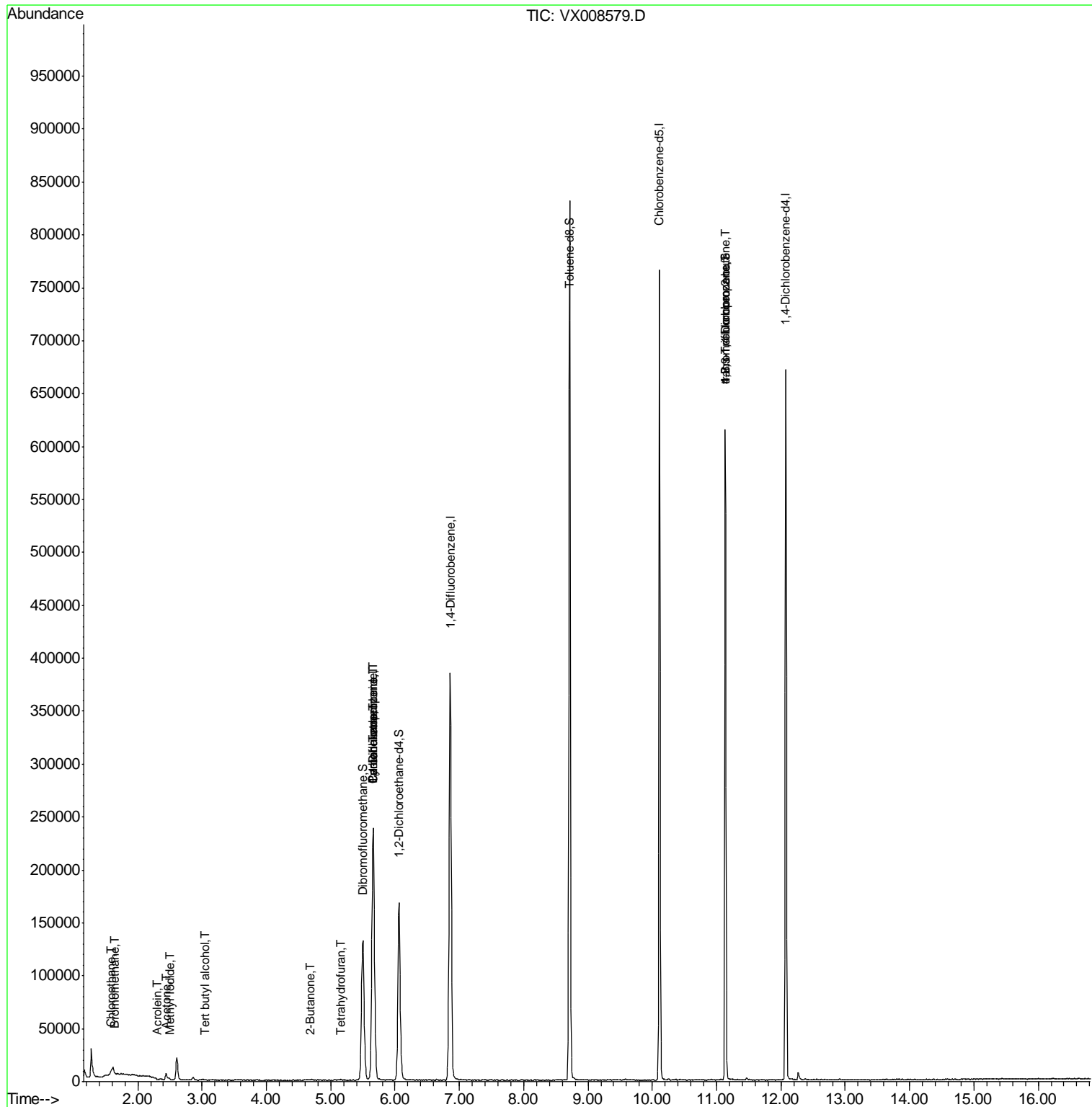
Target Compounds	R.T.	QIon	Response	Conc	Units	Qvalue
3) Chloromethane	1.32	50	709	Below Cal		98
5) Bromomethane	1.65	94	575	2.094	ug/l #	45
6) Chloroethane	1.57	64	8644	3.956	ug/l #	53
10) Methyl Iodide	2.51	142	200	4.204	ug/l #	54
11) Tert butyl alcohol	3.04	59	930	1.236	ug/l #	89
13) Acrolein	2.30	56	264	0.483	ug/l #	80
16) Acetone	2.44	43	6339	3.570	ug/l	99
17) Carbon Disulfide	2.57	76	1091	Below Cal	#	83
20) Methylene Chloride	2.86	84	1147	Below Cal	#	76
21) trans-1,2-Dichloroethene	3.17	96	42	Below Cal	#	9
25) 2-Butanone	4.68	43	837	0.294	ug/l	91
29) Tetrahydrofuran	5.15	42	881	0.470	ug/l #	90
31) Cyclohexane	5.66	56	5385	0.989	ug/l #	1
36) 1,1-Dichloropropene	5.66	75	18709	4.644	ug/l #	51
38) Carbon Tetrachloride	5.66	117	22132	6.584	ug/l #	16
76) 1,2,3-Trichloropropane	11.13	75	82755	20.317	ug/l #	34
81) trans-1,4-Dichloro-2-buten	11.13	75	82755	65.072	ug/l #	9

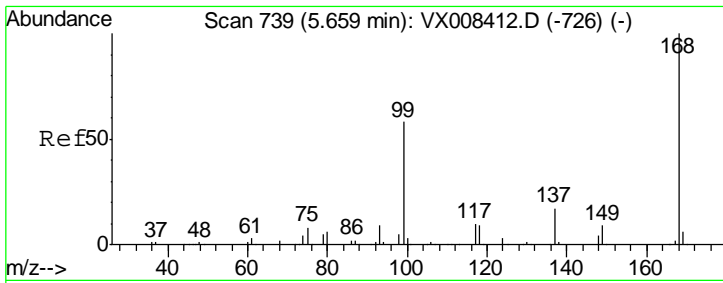
(#) = qualifier out of range (m) = manual integration (+) = signals summed

Data Path : Z:\VOASRV\HPCHEM1\MSVOA X\DATA\VX040119\
 Data File : VX008579.D
 Acq On : 01 Apr 2019 19:16
 Operator : JC/SP
 Sample : K2210-04
 Misc : 5.0mL/MSVOA X/WATER
 ALS Vial : 21 Sample Multiplier: 1

Instrument :
 MSVOA_X
 Client Sampled :
 WE-6

Quant Time: Apr 02 01:14:53 2019
 Quant Method : Z:\VOASRV\HPCHEM1\MSVOA_X\METHOD\82X032519W.M
 Quant Title : SW846 8260
 QLast Update : Tue Mar 26 07:57:20 2019
 Response via : Initial Calibration

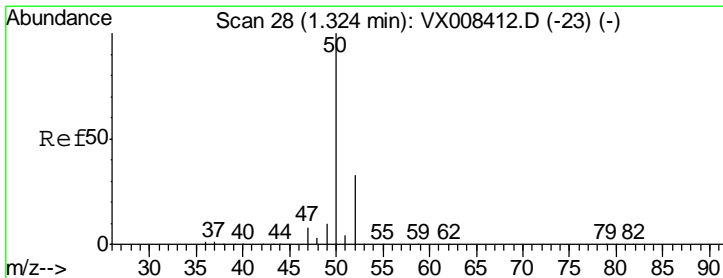
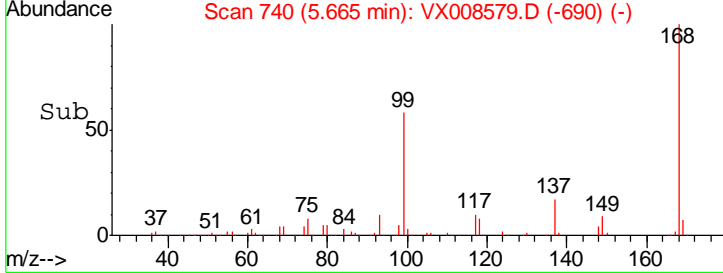
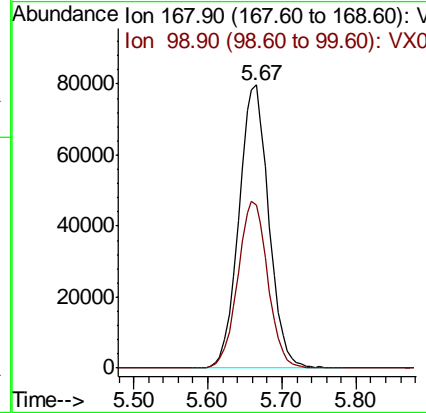
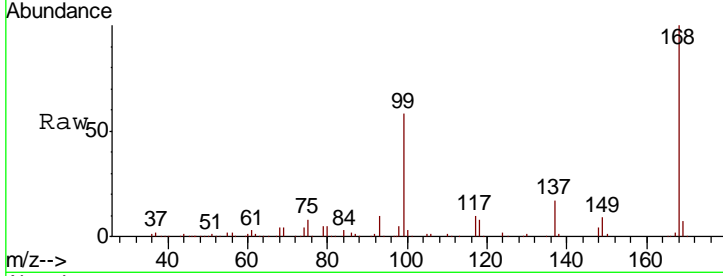




#1
 Pentafluorobenzene
 Concen: 50.000 ug/l
 RT: 5.67 min Scan# 740
 Delta R.T. 0.01 min
 Lab File: VX008579.D
 Acq: 01 Apr 2019 19:16

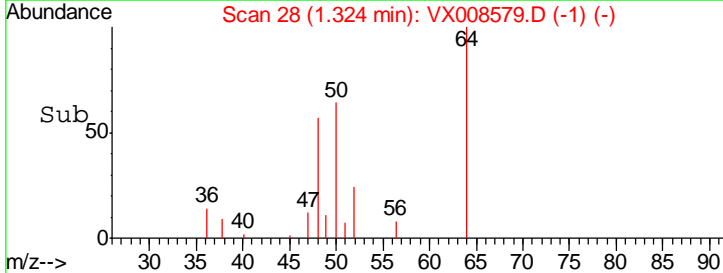
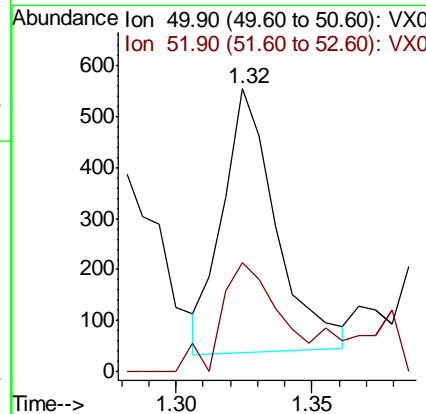
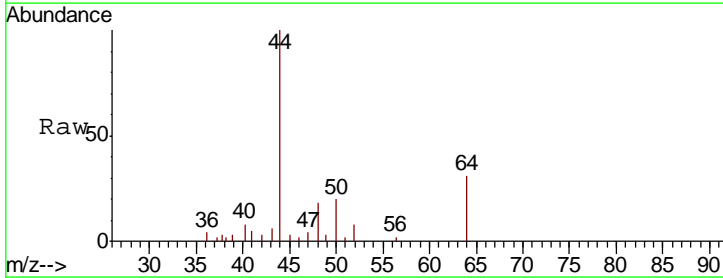
Instrument :
 MSVOA_X
 ClientSampled :
 WE-6

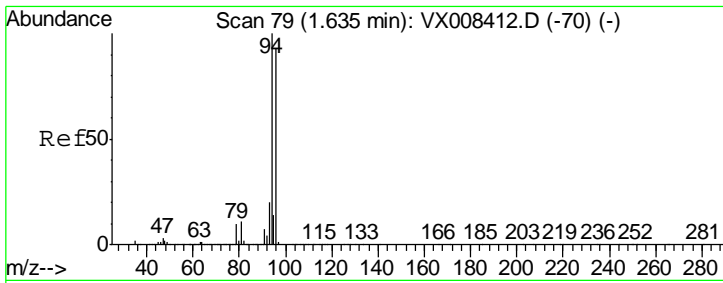
Tgt Ion: 168 Resp: 224101
 Ion Ratio Lower Upper
 168 100
 99 57.6 46.0 69.0



#3
 Chloromethane
 Concen: Below Cal
 RT: 1.32 min Scan# 28
 Delta R.T. 0.00 min
 Lab File: VX008579.D
 Acq: 01 Apr 2019 19:16

Tgt Ion: 50 Resp: 709
 Ion Ratio Lower Upper
 50 100
 52 33.9 26.2 39.2

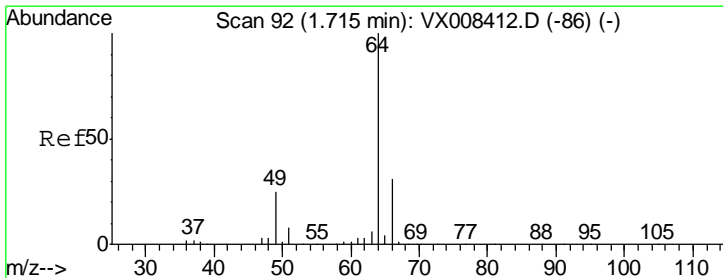
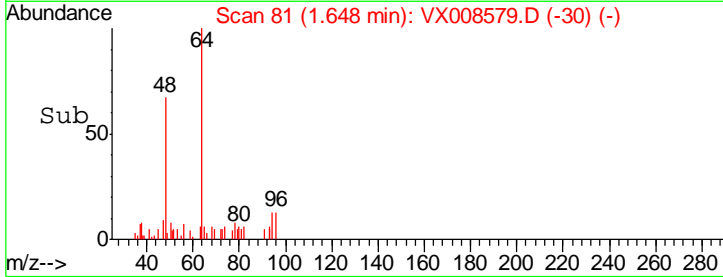
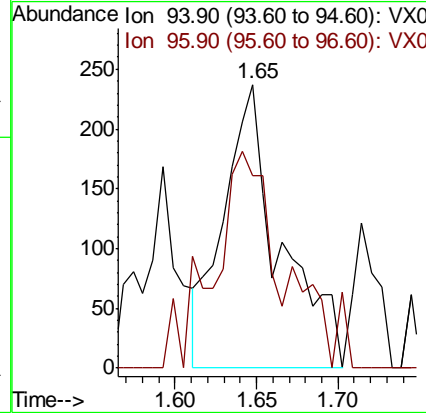
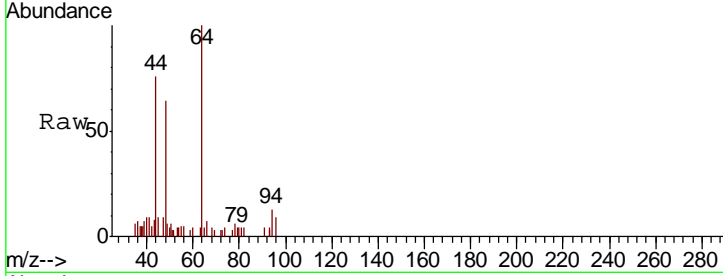




#5
 Bromomethane
 Concen: 2.094 ug/l
 RT: 1.65 min Scan# 81
 Delta R.T. 0.01 min
 Lab File: VX008579.D
 Acq: 01 Apr 2019 19:16

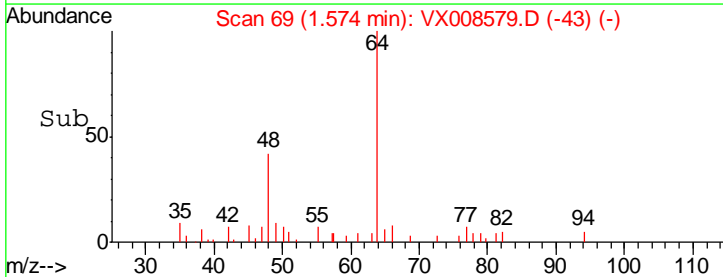
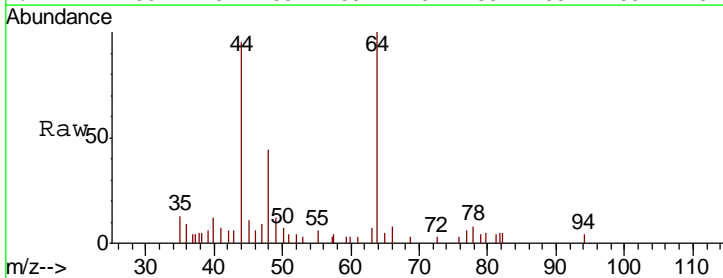
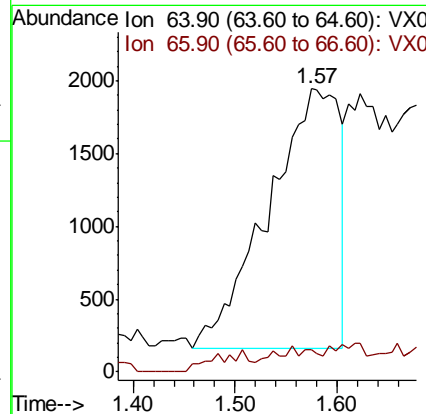
Instrument :
 MSVOA_X
 ClientSampled :
 WE-6

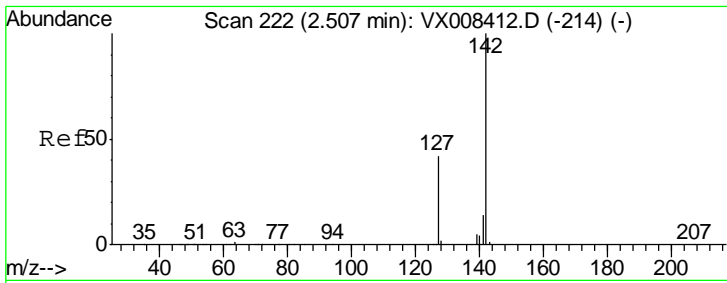
Tgt Ion: 94 Resp: 575
 Ion Ratio Lower Upper
 94 100
 96 40.9 74.8 112.2#



#6
 Chloroethane
 Concen: 3.956 ug/l
 RT: 1.57 min Scan# 69
 Delta R.T. -0.14 min
 Lab File: VX008579.D
 Acq: 01 Apr 2019 19:16

Tgt Ion: 64 Resp: 8644
 Ion Ratio Lower Upper
 64 100
 66 5.2 25.1 37.7#

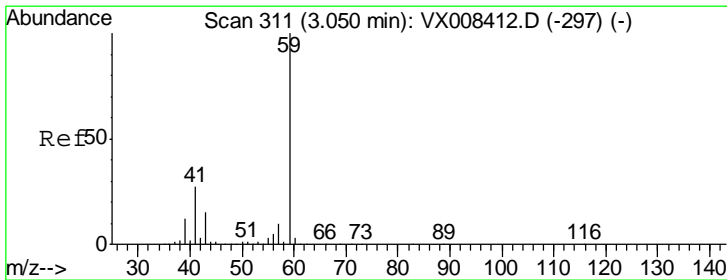
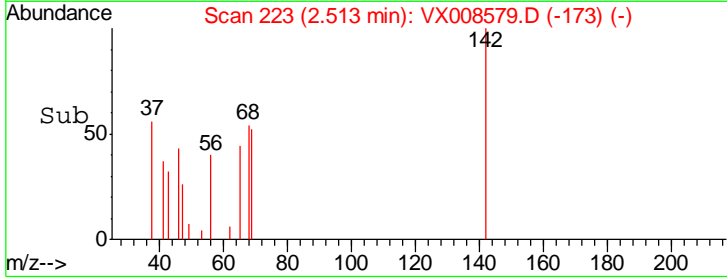
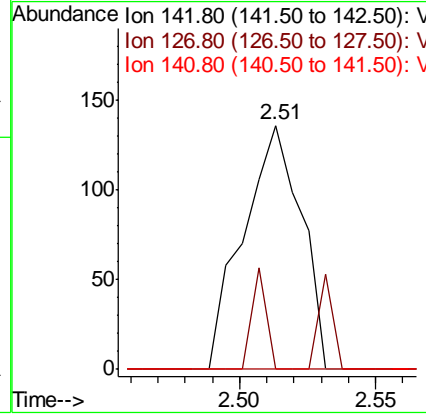
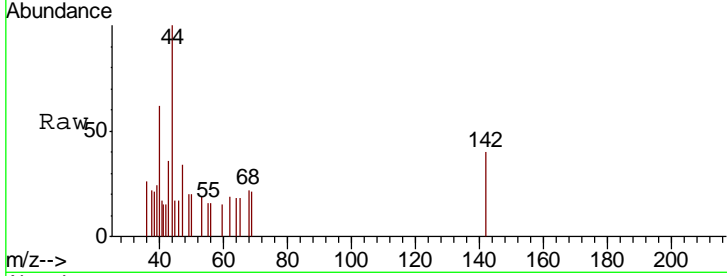




#10
 Methyl Iodide
 Concen: 4.204 ug/l
 RT: 2.51 min Scan# 223
 Delta R.T. 0.01 min
 Lab File: VX008579.D
 Acq: 01 Apr 2019 19:16

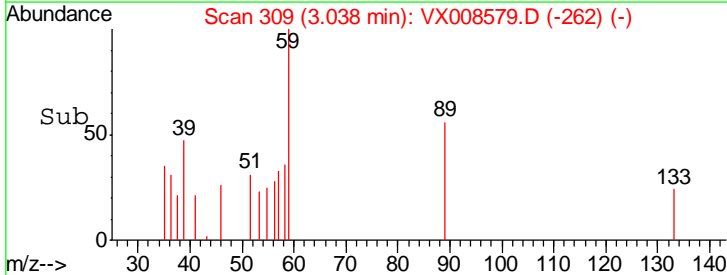
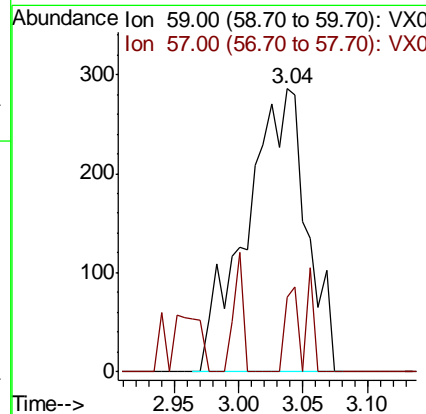
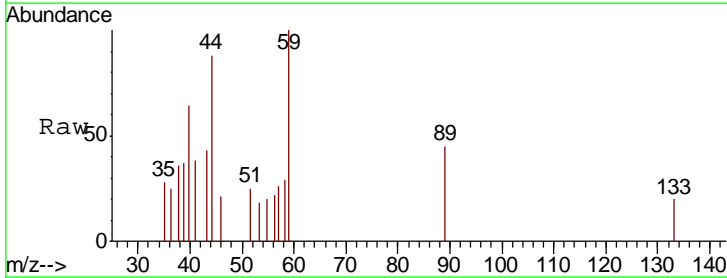
Instrument :
 MSVOA_X
 ClientSampled :
 WE-6

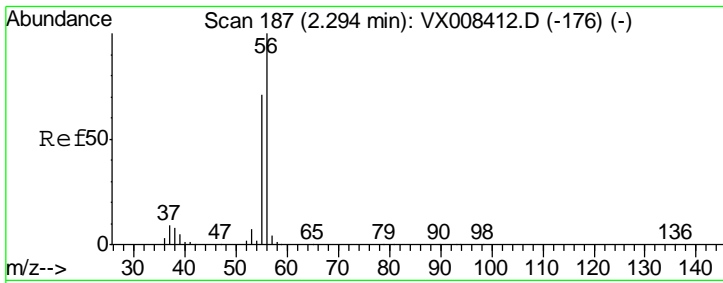
Tgt Ion	Resp	Lower	Upper
142	200		
127	10.5	33.6	50.4#
141	0.0	11.3	16.9#



#11
 Tert butyl alcohol
 Concen: 1.236 ug/l
 RT: 3.04 min Scan# 309
 Delta R.T. -0.01 min
 Lab File: VX008579.D
 Acq: 01 Apr 2019 19:16

Tgt Ion	Resp	Lower	Upper
59	930		
57	6.3	8.2	12.4#

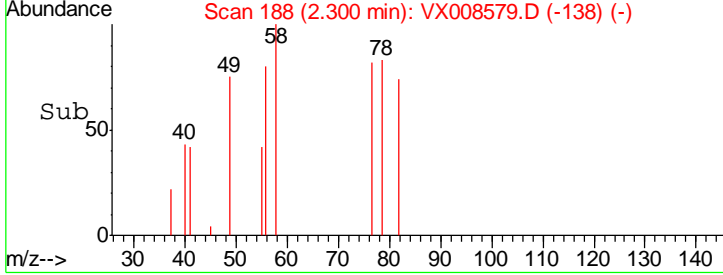
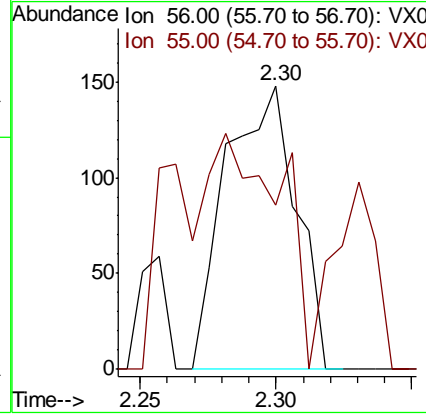
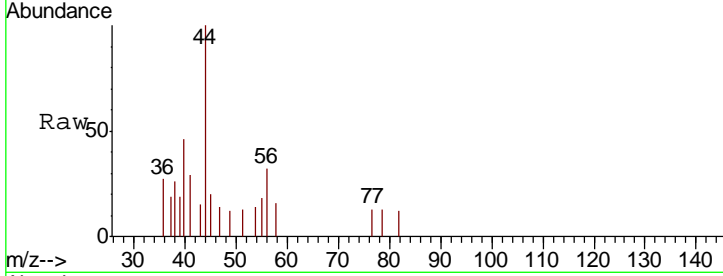




#13
 Acrolein
 Concen: 0.483 ug/l
 RT: 2.30 min Scan# 188
 Delta R.T. 0.01 min
 Lab File: VX008579.D
 Acq: 01 Apr 2019 19:16

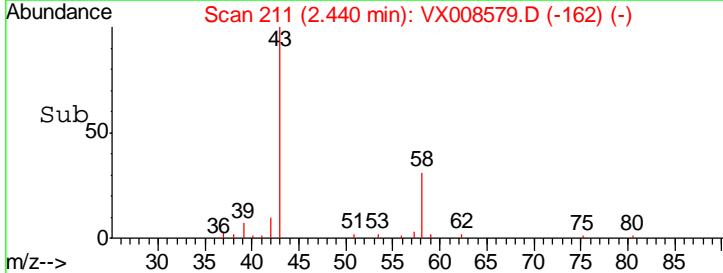
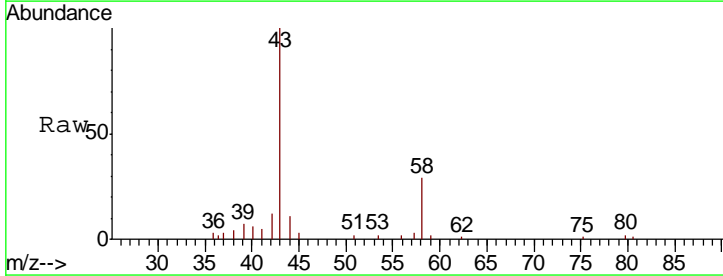
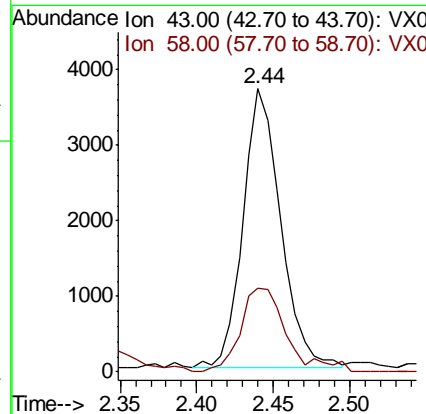
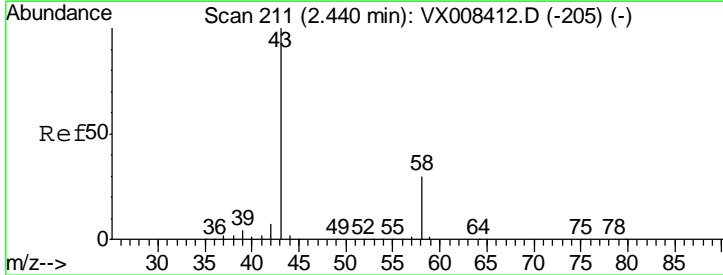
Instrument :
 MSVOA_X
 ClientSampled :
 WE-6

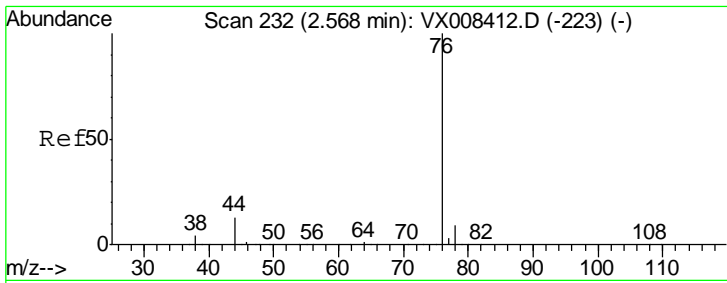
Tgt Ion: 56 Resp: 264
 Ion Ratio Lower Upper
 56 100
 55 86.7 56.5 84.7#



#16
 Acetone
 Concen: 3.570 ug/l
 RT: 2.44 min Scan# 211
 Delta R.T. -0.00 min
 Lab File: VX008579.D
 Acq: 01 Apr 2019 19:16

Tgt Ion: 43 Resp: 6339
 Ion Ratio Lower Upper
 43 100
 58 29.9 24.2 36.2

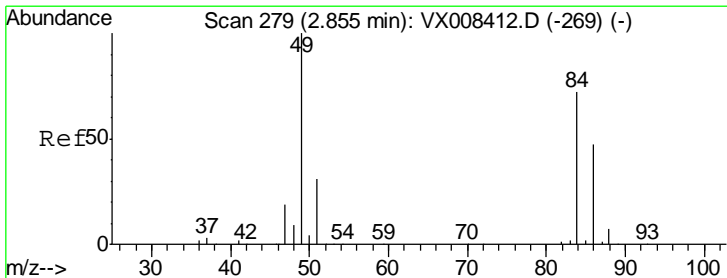
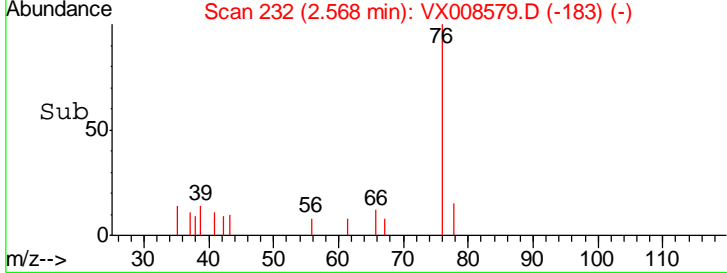
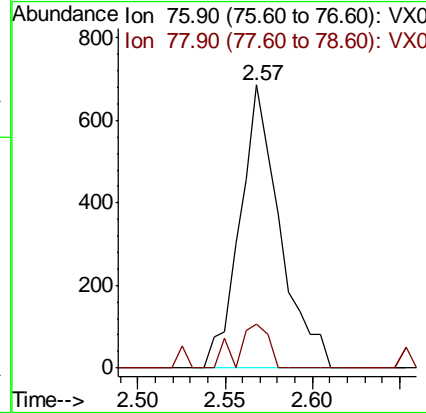
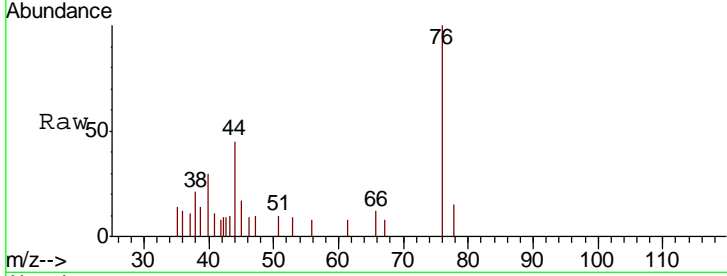




#17
 Carbon Disulfide
 Concen: Below Cal
 RT: 2.57 min Scan# 232
 Delta R.T. 0.00 min
 Lab File: VX008579.D
 Acq: 01 Apr 2019 19:16

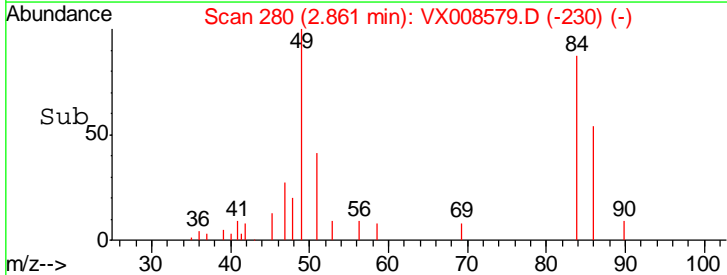
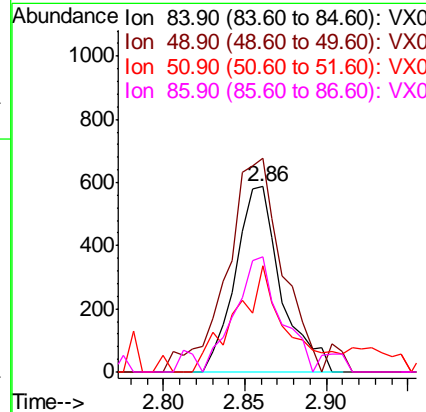
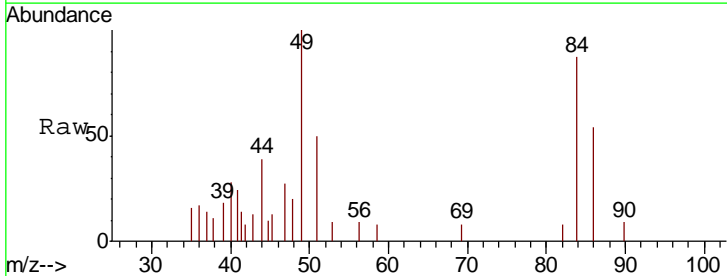
Instrument :
 MSVOA_X
 ClientSampled :
 WE-6

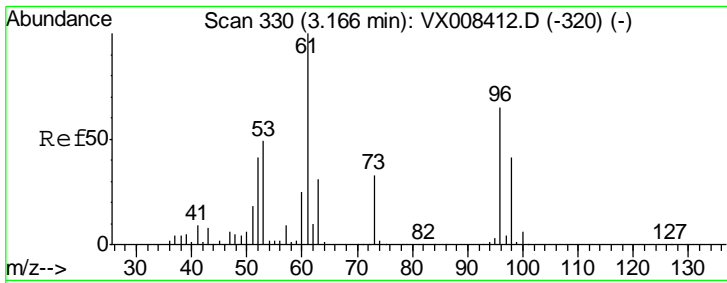
Tgt Ion	Resp	Lower	Upper
76	1091		
78	15.5	7.4	11.2#



#20
 Methylene Chloride
 Concen: Below Cal
 RT: 2.86 min Scan# 280
 Delta R.T. 0.01 min
 Lab File: VX008579.D
 Acq: 01 Apr 2019 19:16

Tgt Ion	Resp	Lower	Upper
84	1147		
49	103.9	110.6	165.8#
51	57.2	33.9	50.9#
86	52.6	52.2	78.2

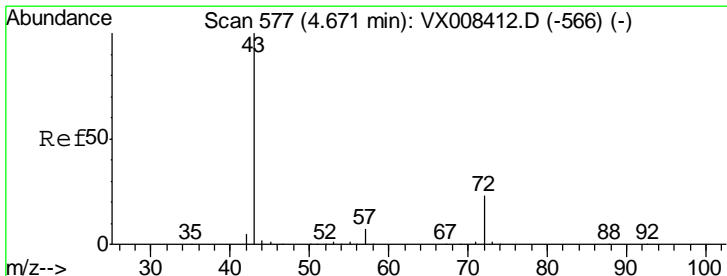
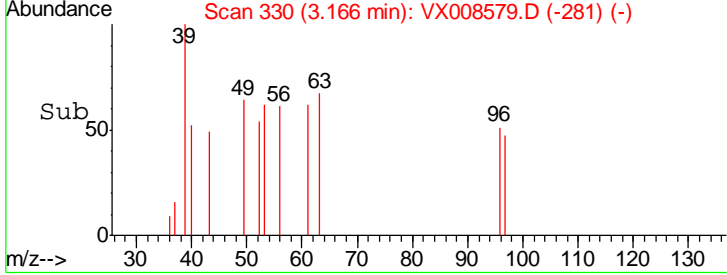
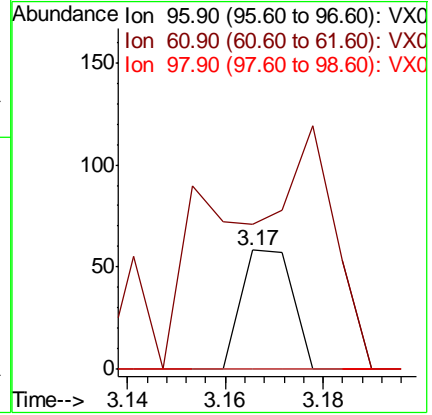
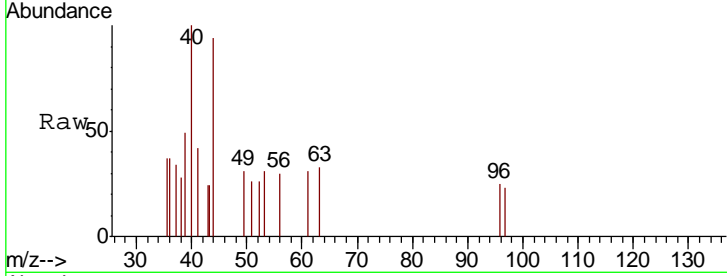




#21
 trans-1,2-Dichloroethene
 Concen: Below Cal
 RT: 3.17 min Scan# 330
 Delta R.T. 0.00 min
 Lab File: VX008579.D
 Acq: 01 Apr 2019 19:16

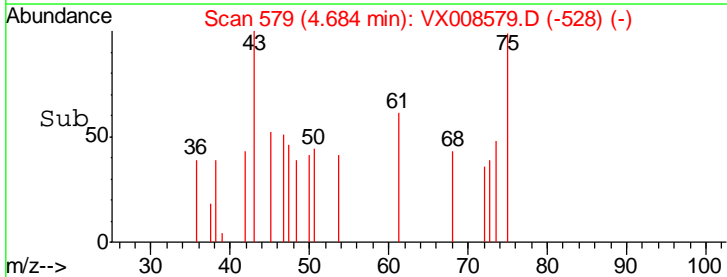
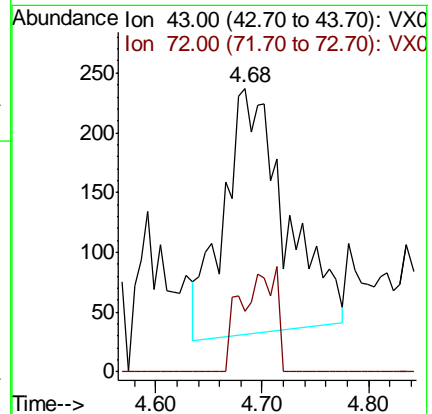
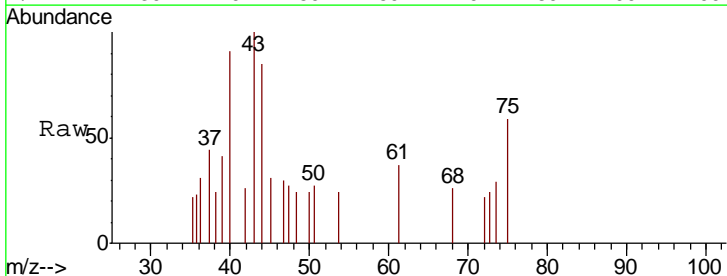
Instrument : MSVOA_X
 ClientSampled : WE-6

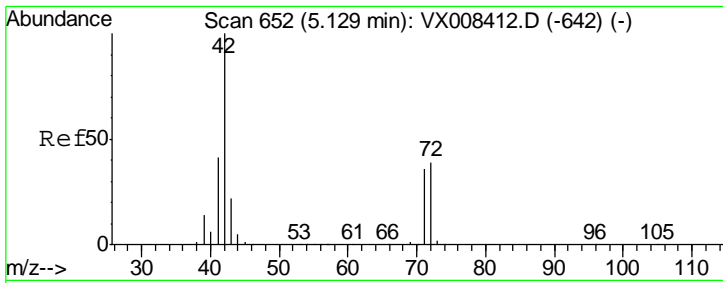
Tgt Ion	Resp	Lower	Upper
96	100		
61	31.0	122.6	184.0#
98	0.0	50.9	76.3#



#25
 2-Butanone
 Concen: 0.294 ug/l
 RT: 4.68 min Scan# 579
 Delta R.T. 0.01 min
 Lab File: VX008579.D
 Acq: 01 Apr 2019 19:16

Tgt Ion	Resp	Lower	Upper
43	100		
72	27.9	18.6	28.0

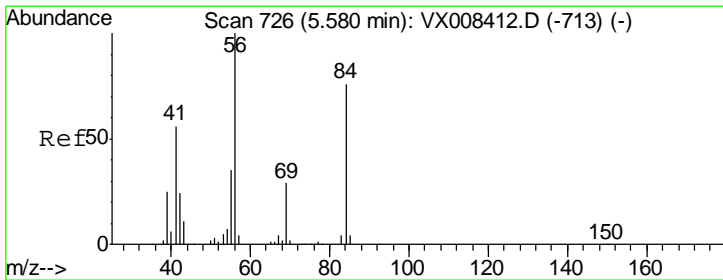
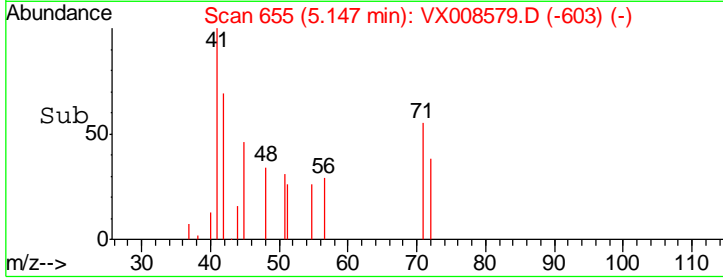
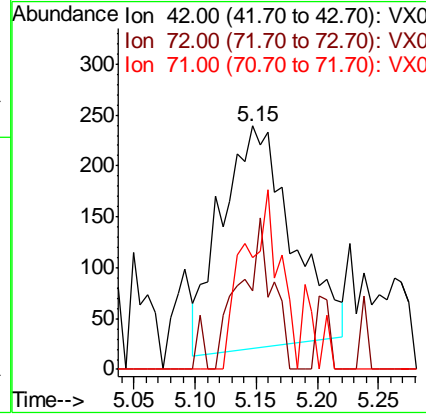
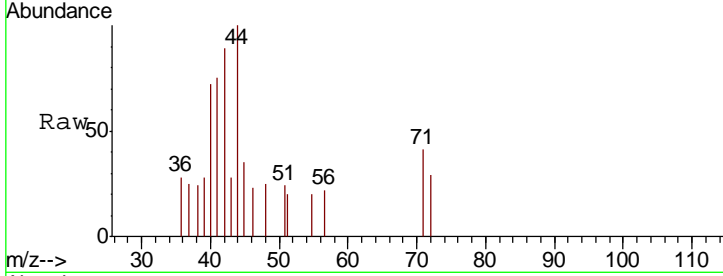




#29
 Tetrahydrofuran
 Concen: 0.470 ug/l
 RT: 5.15 min Scan# 655
 Delta R.T. 0.02 min
 Lab File: VX008579.D
 Acq: 01 Apr 2019 19:16

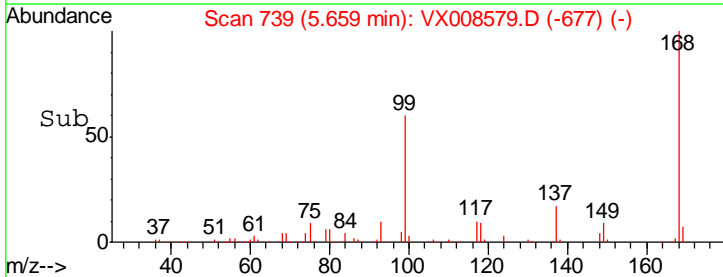
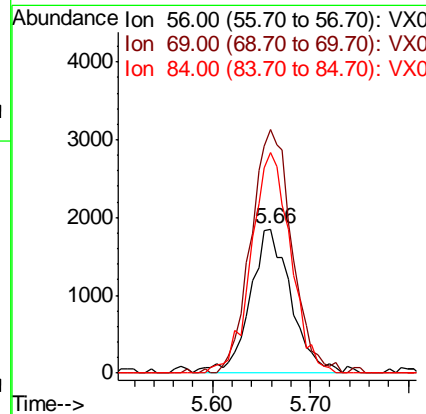
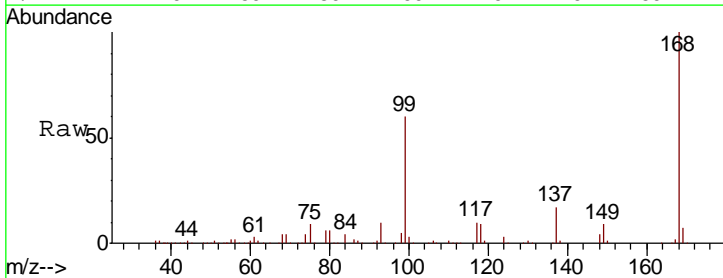
Instrument :
 MSVOA_X
 ClientSampled :
 WE-6

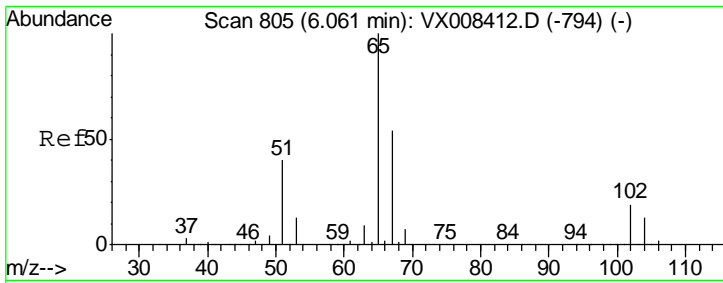
Tgt Ion	Resp	Lower	Upper
42	881		
72	31.0	31.4	47.2#
71	40.1	29.4	44.2



#31
 Cyclohexane
 Concen: 0.989 ug/l
 RT: 5.66 min Scan# 739
 Delta R.T. 0.08 min
 Lab File: VX008579.D
 Acq: 01 Apr 2019 19:16

Tgt Ion	Resp	Lower	Upper
56	5385		
69	168.6	23.2	34.8#
84	152.7	60.7	91.1#

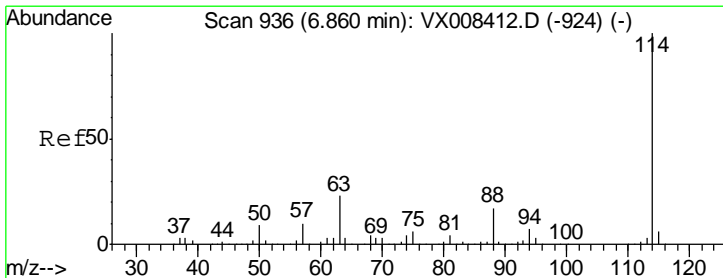
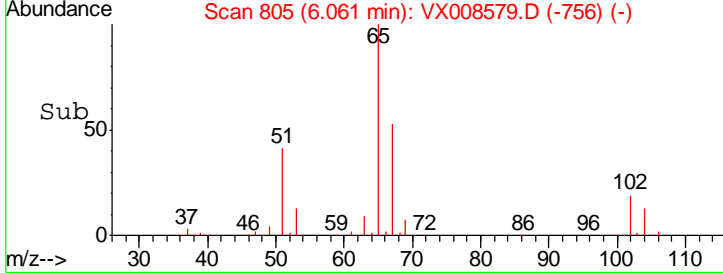
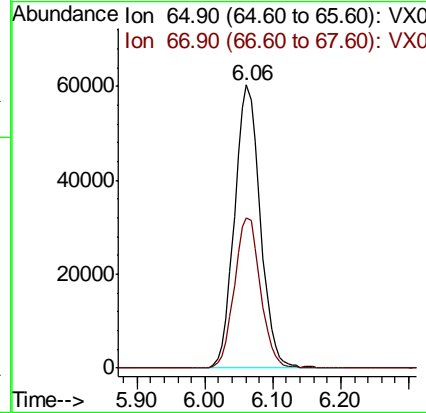
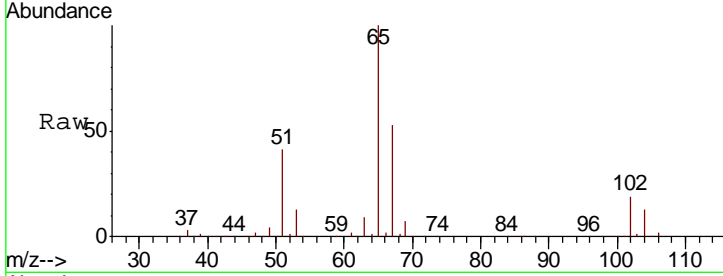




#33
 1,2-Dichloroethane-d4
 Concen: 46.573 ug/l
 RT: 6.06 min Scan# 805
 Delta R.T. -0.00 min
 Lab File: VX008579.D
 Acq: 01 Apr 2019 19:16

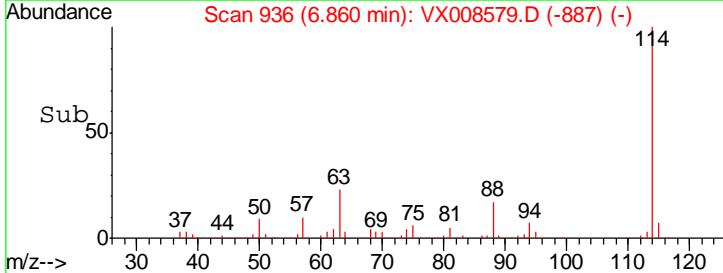
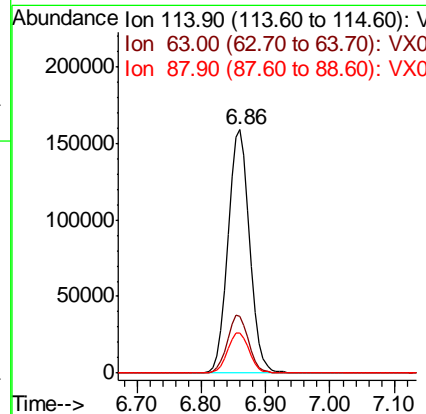
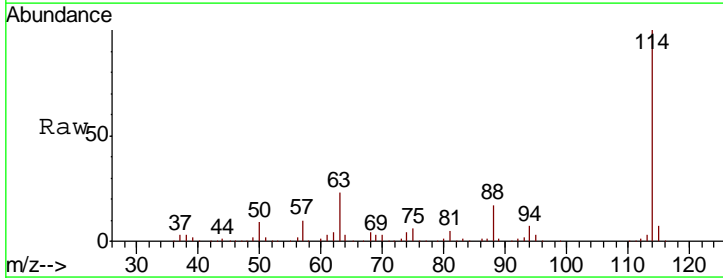
Instrument : MSVOA_X
 ClientSampled : WE-6

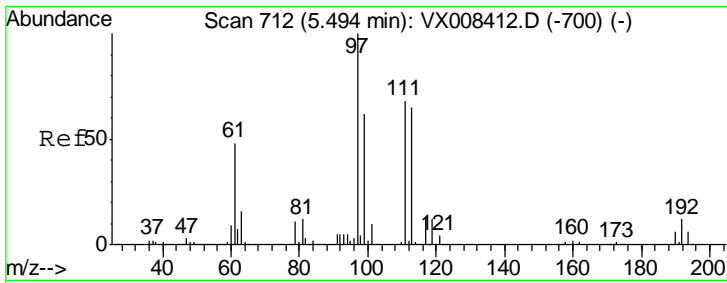
Tgt Ion	Resp	Lower	Upper
65	158227		
67	53.8	0.0	109.4



#34
 1,4-Difluorobenzene
 Concen: 50.000 ug/l
 RT: 6.86 min Scan# 936
 Delta R.T. -0.00 min
 Lab File: VX008579.D
 Acq: 01 Apr 2019 19:16

Tgt Ion	Resp	Lower	Upper
114	377805		
63	23.3	0.0	46.4
88	16.7	0.0	33.2



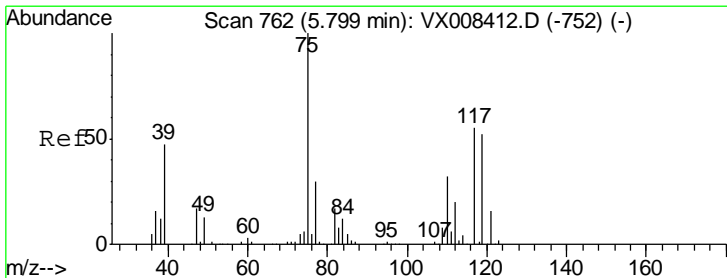
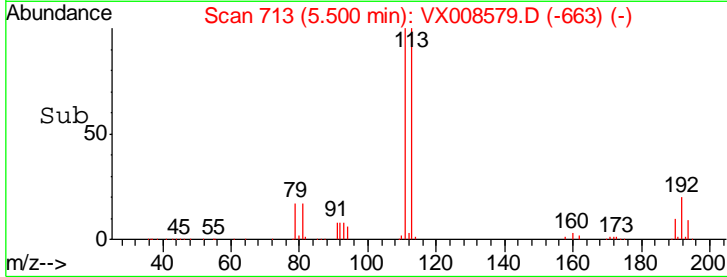
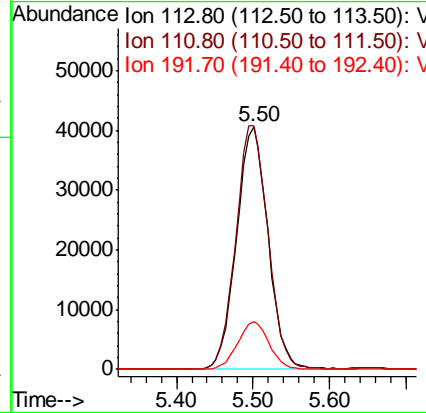
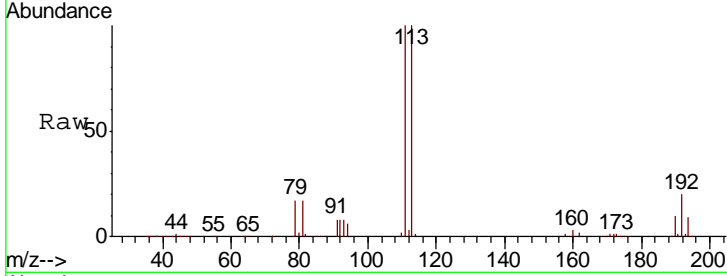


#35
 Dibromofluoromethane
 Concen: 47.060 ug/l
 RT: 5.50 min Scan# 713
 Delta R.T. 0.01 min
 Lab File: VX008579.D
 Acq: 01 Apr 2019 19:16

Instrument :
 MSVOA_X
 ClientSampled :
 WE-6

Tgt Ion:113 Resp: 115930

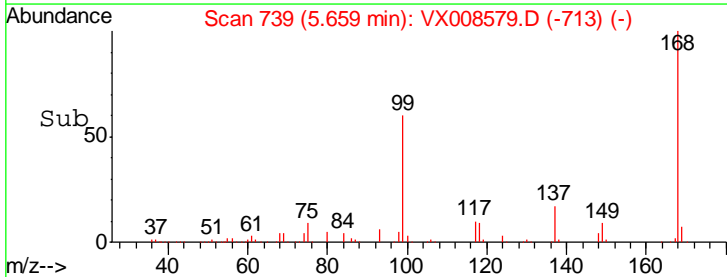
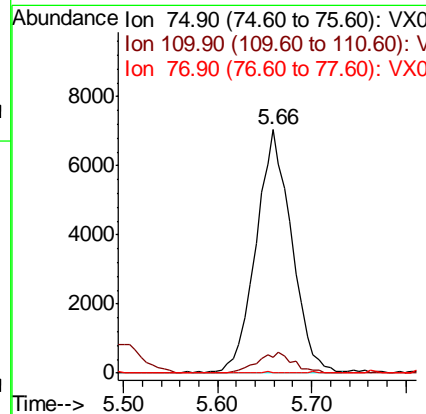
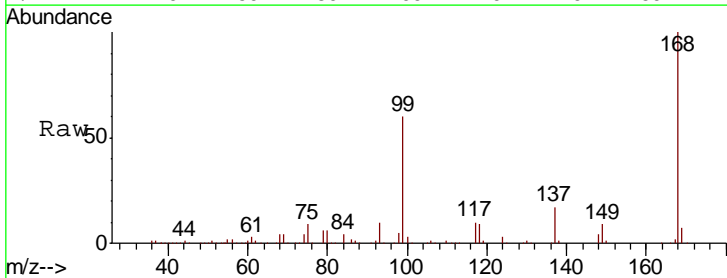
Ion	Ratio	Lower	Upper
113	100		
111	102.6	83.0	124.4
192	19.7	15.6	23.4

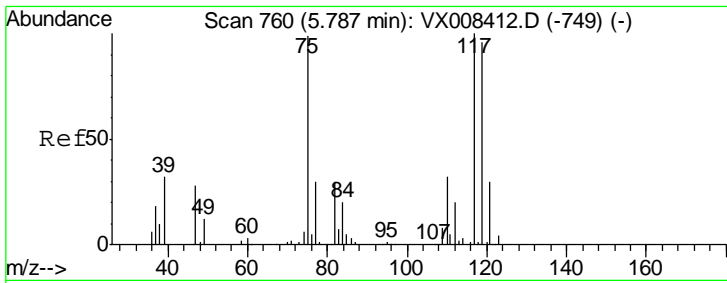


#36
 1,1-Dichloropropene
 Concen: 4.644 ug/l
 RT: 5.66 min Scan# 739
 Delta R.T. -0.14 min
 Lab File: VX008579.D
 Acq: 01 Apr 2019 19:16

Tgt Ion: 75 Resp: 18709

Ion	Ratio	Lower	Upper
75	100		
110	8.6	16.6	49.7#
77	0.1	24.2	36.2#

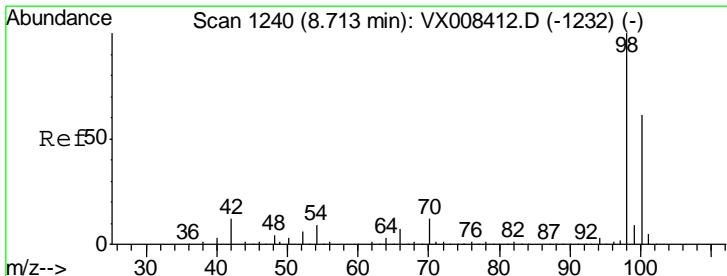
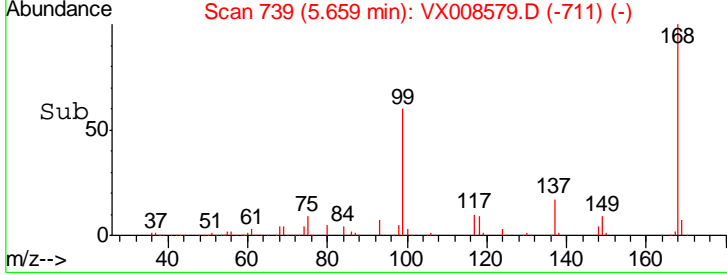
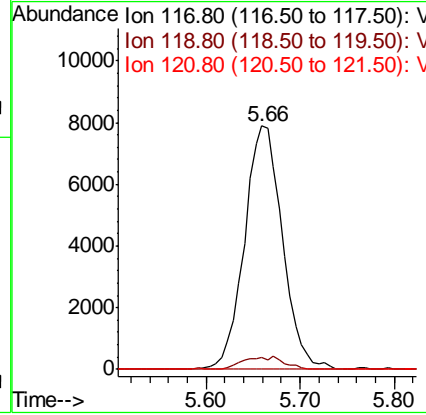
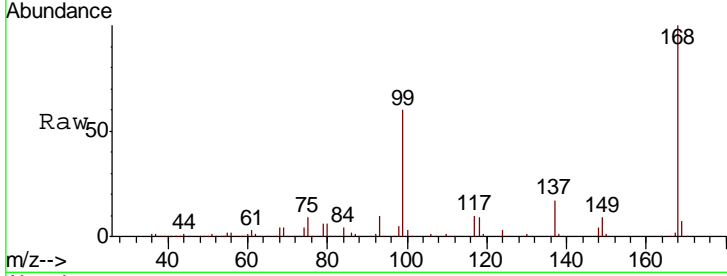




#38
 Carbon Tetrachloride
 Concen: 6.584 ug/l
 RT: 5.66 min Scan# 739
 Delta R.T. -0.13 min
 Lab File: VX008579.D
 Acq: 01 Apr 2019 19:16

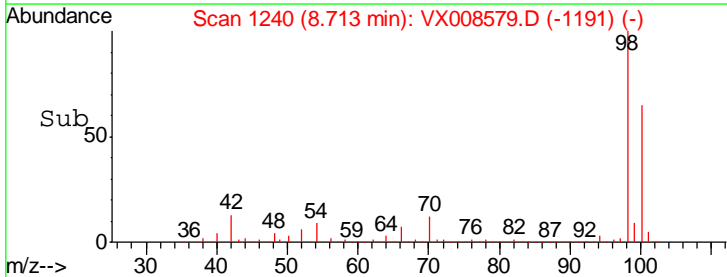
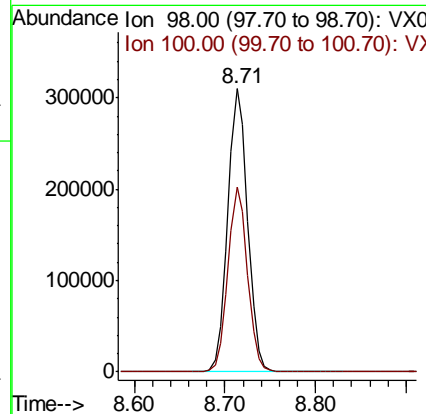
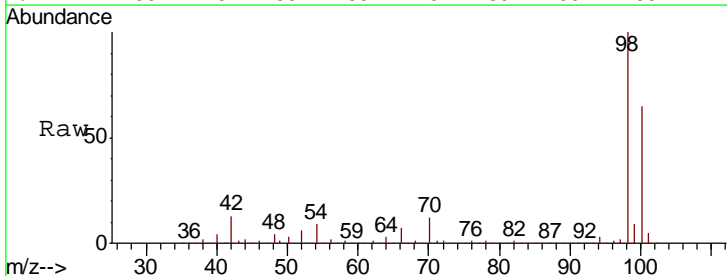
Instrument :
 MSVOA_X
 ClientSampled :
 WE-6

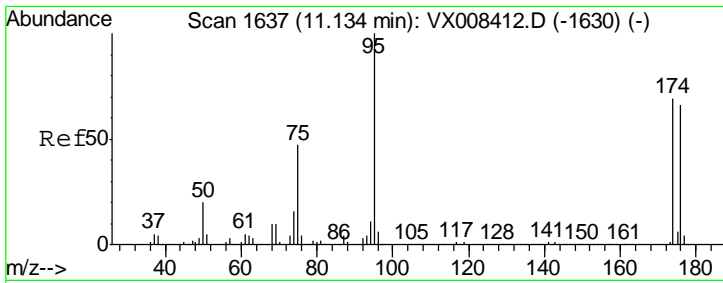
Tgt Ion	Resp	Lower	Upper
117	22132		
117	100		
119	5.1	76.7	115.1#
121	0.0	24.3	36.5#



#50
 Toluene-d8
 Concen: 48.021 ug/l
 RT: 8.71 min Scan# 1240
 Delta R.T. -0.00 min
 Lab File: VX008579.D
 Acq: 01 Apr 2019 19:16

Tgt Ion	Resp	Lower	Upper
98	473023		
98	100		
100	64.3	51.1	76.7

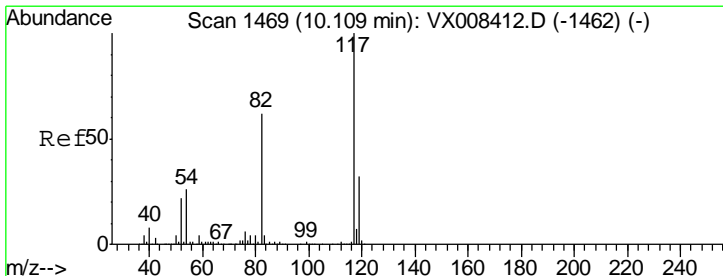
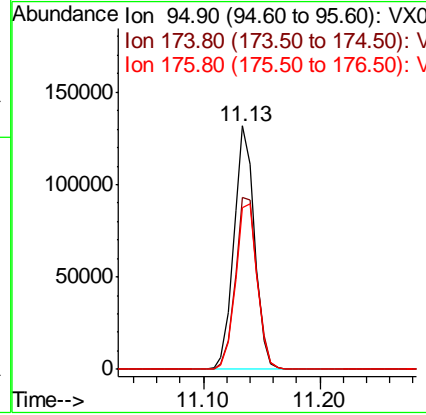
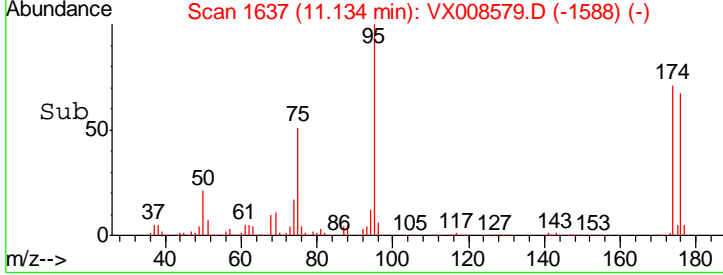
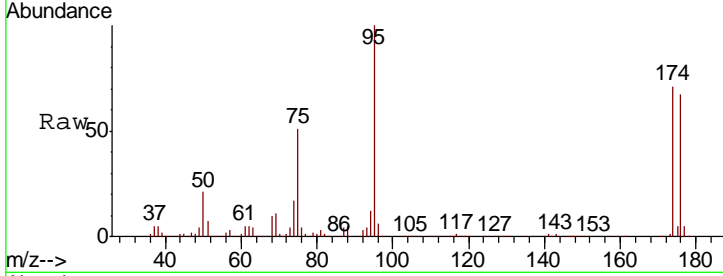




#62
 4-Bromofluorobenzene
 Concen: 44.403 ug/l
 RT: 11.13 min Scan# 1637
 Delta R.T. -0.00 min
 Lab File: VX008579.D
 Acq: 01 Apr 2019 19:16

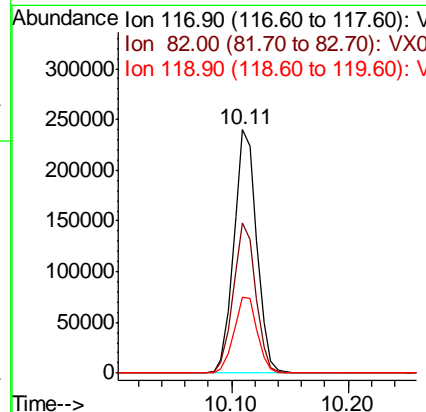
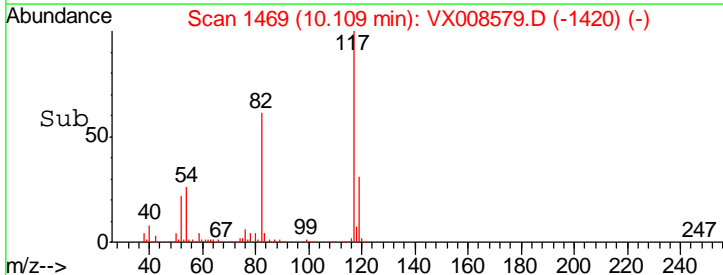
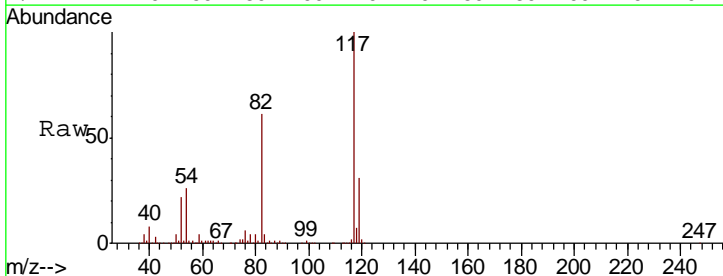
Instrument :
 MSVOA_X
 ClientSampled :
 WE-6

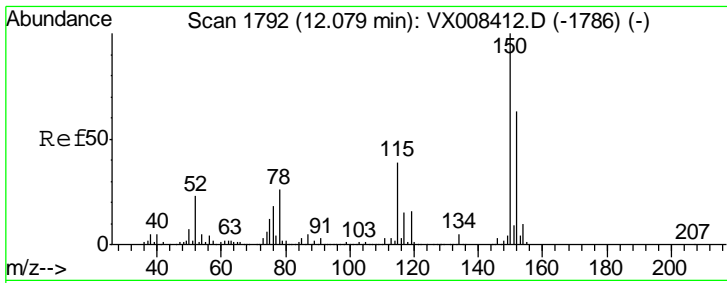
Tgt Ion	Resp	Lower	Upper
95	162080		
174	74.8	0.0	147.2
176	71.8	0.0	142.4



#63
 Chlorobenzene-d5
 Concen: 50.000 ug/l
 RT: 10.11 min Scan# 1469
 Delta R.T. -0.00 min
 Lab File: VX008579.D
 Acq: 01 Apr 2019 19:16

Tgt Ion	Resp	Lower	Upper
117	326778		
82	61.4	49.4	74.2
119	31.2	25.4	38.0

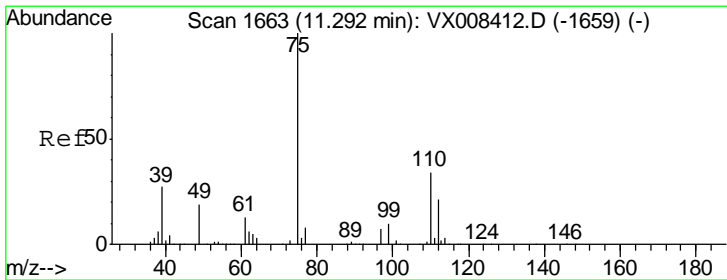
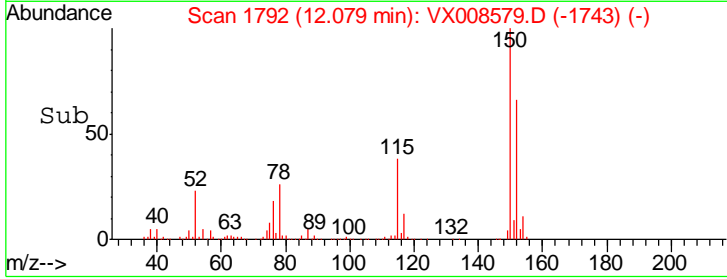
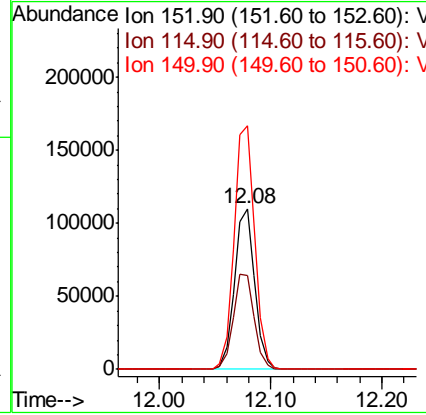
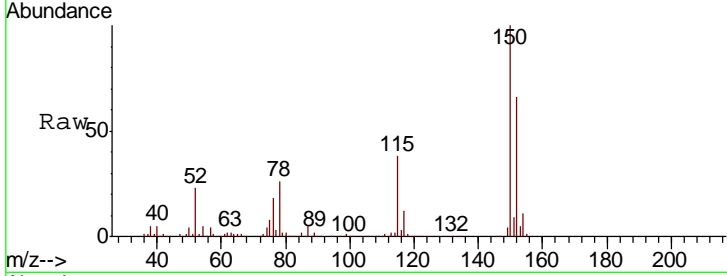




#72
 1,4-Dichlorobenzene-d4
 Concen: 50.000 ug/l
 RT: 12.08 min Scan# 1792
 Delta R.T. -0.00 min
 Lab File: VX008579.D
 Acq: 01 Apr 2019 19:16

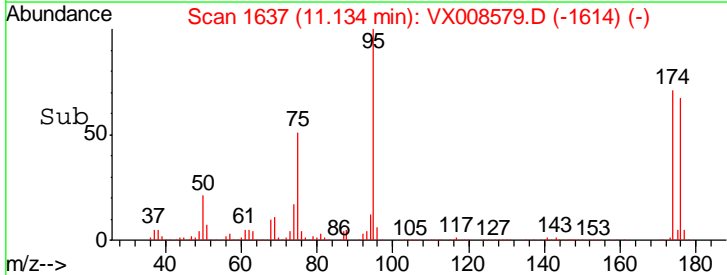
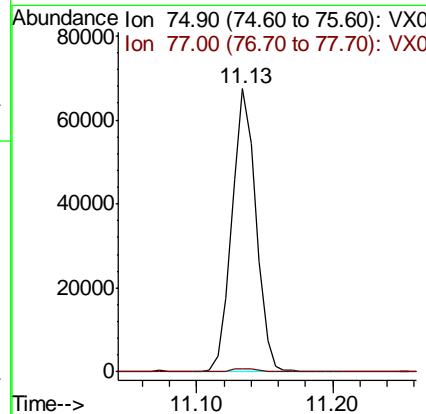
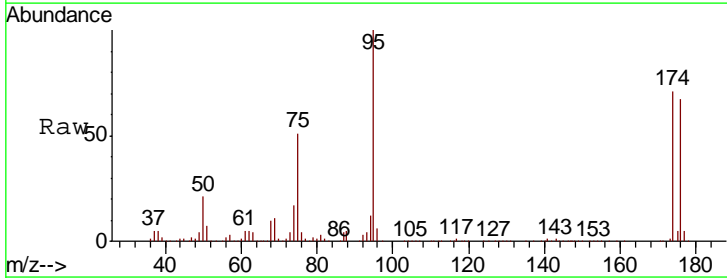
Instrument :
 MSVOA_X
 ClientSampled :
 WE-6

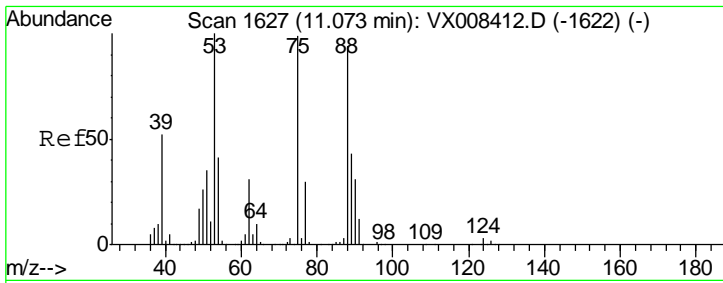
Tgt Ion	Resp	Lower	Upper
152	100		
115	61.0	43.5	130.5
150	155.4	0.0	348.8



#76
 1,2,3-Trichloropropane
 Concen: 20.317 ug/l
 RT: 11.13 min Scan# 1637
 Delta R.T. -0.16 min
 Lab File: VX008579.D
 Acq: 01 Apr 2019 19:16

Tgt Ion	Resp	Lower	Upper
75	100		
77	1.4	21.9	65.7#

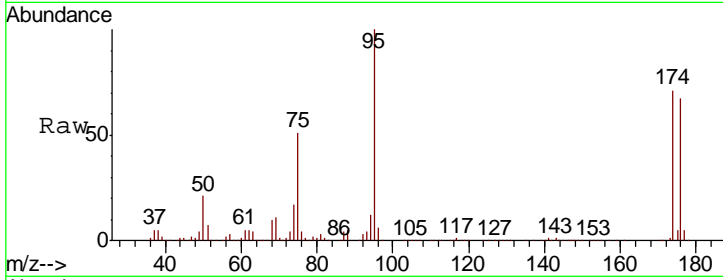




#81
 trans-1,4-Dichloro-2-butene
 Concen: 65.072 ug/l
 RT: 11.13 min Scan# 1637
 Delta R.T. 0.06 min
 Lab File: VX008579.D
 Acq: 01 Apr 2019 19:16

Instrument :
 MSVOA_X
 ClientSampled :
 WE-6

Tot Ion	Ion	Ratio	Lower	Upper
82755	75	100		
	53	0.0	82.1	123.1#
	89	0.0	34.6	52.0#



Abundance Ion 74.90 (74.60 to 75.60): VX0
 Ion 53.00 (52.70 to 53.70): VX0
 Ion 88.90 (88.60 to 89.60): VX0

