

Data Path : Z:\voasrv\HPCHEM1\MSVOA_X\Data\VX040121\
 Data File : VX021712.D
 Acq On : 01 Apr 2021 16:40
 Operator : JC/MD
 Sample : M1913-03RE
 Misc : 5.0mL/MSVOA_X/WATER
 ALS Vial : 14 Sample Multiplier: 1

Instrument :
 MSVOA_X
 ClientSampleId :
 EB-01-040121RE

Integration Parameters: RTEINT.P
 Integrator: RTE
 Smoothing : ON Filtering: 5
 Sampling : 1 Min Area: 3 % of largest Peak
 Start Thrs: 0.2 Max Peaks: 100
 Stop Thrs : 0 Peak Location: TOP

If leading or trailing edge < 100 prefer < Baseline drop else tangent >
 Peak separation: 5

Method : Z:\voasrv\HPCHEM1\MSVOA_X\Method\82X032421W.M
 Title : SW846 8260

Signal : TIC: VX021712.D\data.ms

peak #	R.T. min	first scan	max scan	last scan	PK TY	peak height	corr. area	corr. % max.	% of total
1	1.599	77	87	92	rVB7	3239	7588	2.22%	0.408%
2	2.428	220	228	234	rBV	3138	5847	1.71%	0.314%
3	2.587	248	255	260	rBV	3650	6435	1.88%	0.346%
4	2.840	292	298	307	rBV2	2558	4599	1.34%	0.247%
5	5.470	733	745	759	rBV	44508	124377	36.35%	6.684%
6	5.629	761	772	789	rVB2	60624	174035	50.86%	9.353%
7	6.035	829	841	853	rBV	46918	123529	36.10%	6.639%
8	6.829	966	976	989	rBV	102580	246190	71.95%	13.231%
9	8.694	1285	1293	1310	rBV	208347	342190	100.00%	18.390%
10	10.094	1523	1531	1547	rBV	237822	322645	94.29%	17.340%
11	11.123	1700	1706	1717	rVB	177952	235025	68.68%	12.631%
12	12.059	1859	1865	1872	rBV	211058	268236	78.39%	14.416%

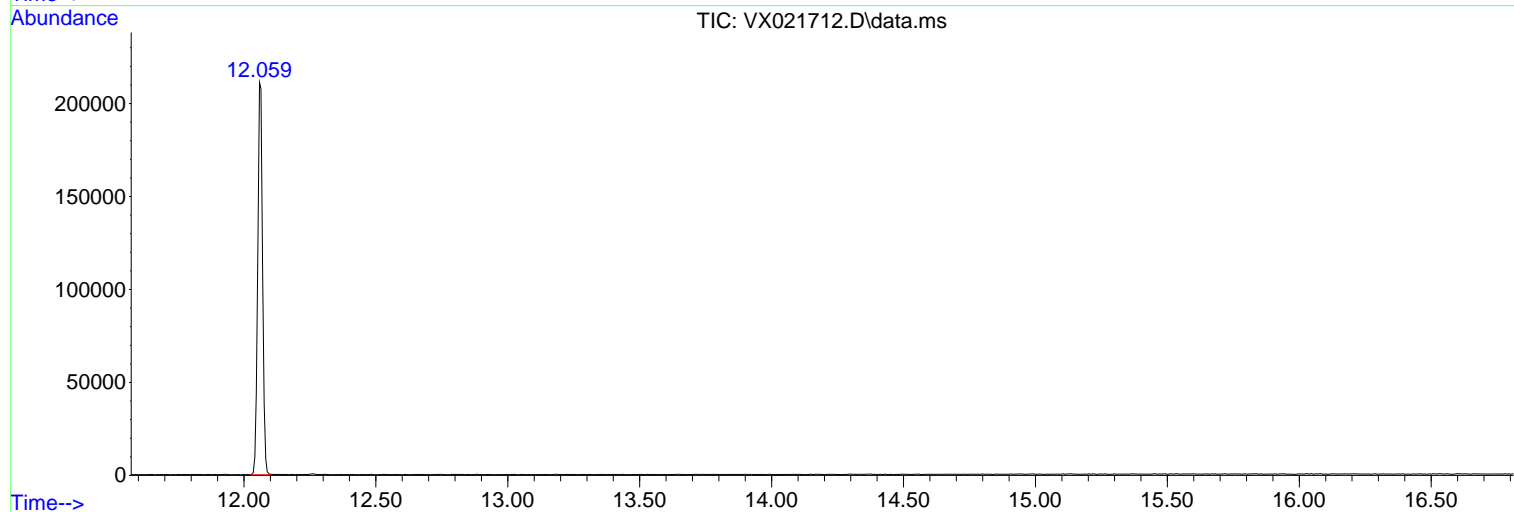
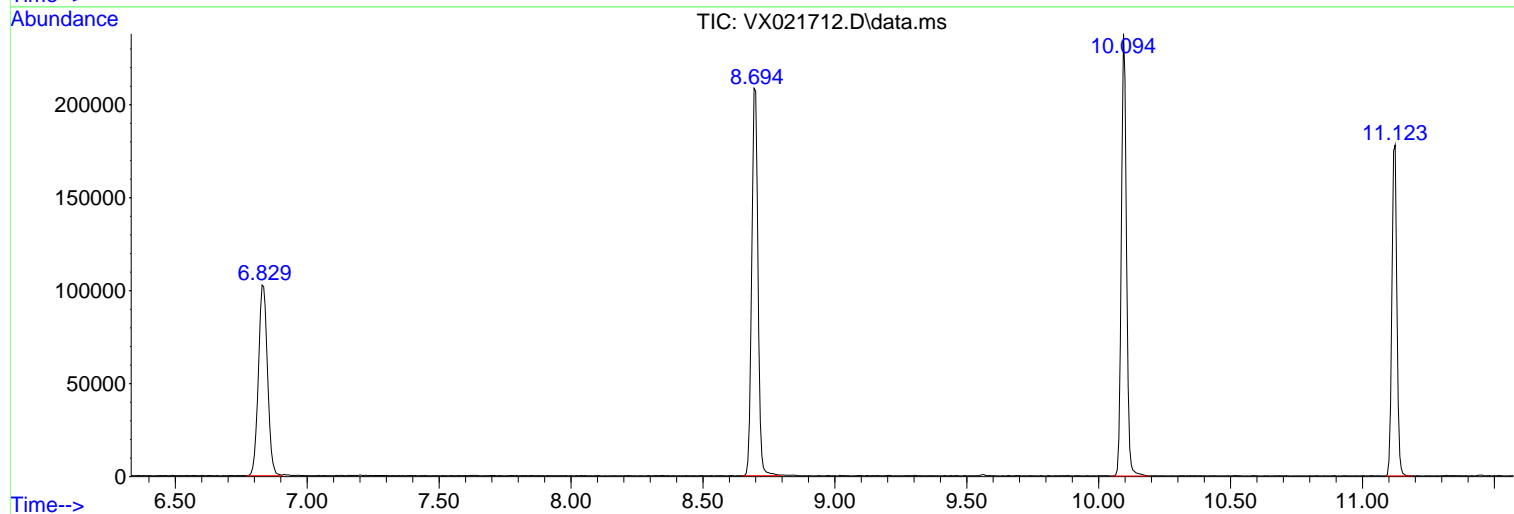
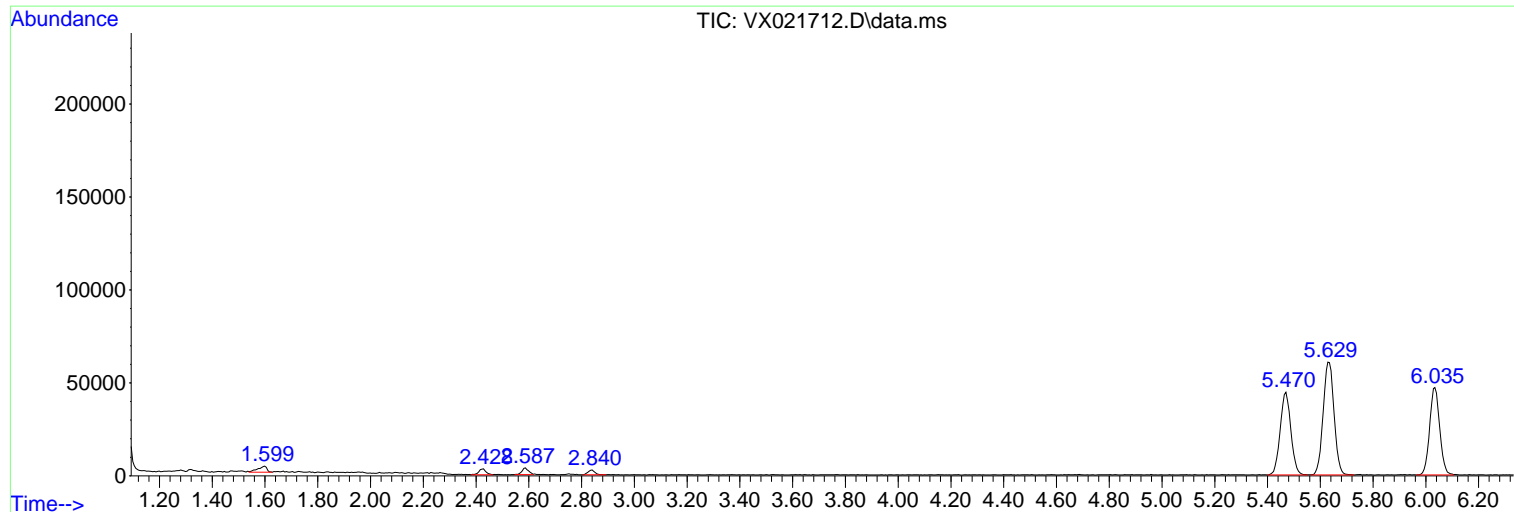
Sum of corrected areas: 1860696

Data Path : Z:\voasrv\HPCHEM1\MSVOA_X\Data\VX040121\
Data File : VX021712.D
Acq On : 01 Apr 2021 16:40
Operator : JC/MD
Sample : M1913-03RE
Misc : 5.0mL/MSVOA_X/WATER
ALS Vial : 14 Sample Multiplier: 1

Instrument :
MSVOA_X
ClientSampled :
EB-01-040121RE

Quant Method : Z:\voasrv\HPCHEM1\MSVOA_X\Method\82X032421W.M
Quant Title : SW846 8260

TIC Library : C:\DATABASE\NIST11.L
TIC Integration Parameters: LSCINT.P



Library Search Compound Report

Data Path : Z:\voasrv\HPCHEM1\MSVOA_X\Data\VX040121\
Data File : VX021712.D
Acq On : 01 Apr 2021 16:40
Operator : JC/MD
Sample : M1913-03RE
Misc : 5.0mL/MSVOA_X/WATER
ALS Vial : 14 Sample Multiplier: 1

Instrument :
MSVOA_X
ClientSampleId :
EB-01-040121RE

Quant Method : Z:\voasrv\HPCHEM1\MSVOA_X\Method\82X032421W.M
Quant Title : SW846 8260

TIC Library : C:\DATABASE\NIST11.L
TIC Integration Parameters: LSCINT.P

No Library Search Compounds Detected

Data Path : Z:\voasrv\HPCHEM1\MSVOA_X\Data\VX040121\
Data File : VX021712.D
Acq On : 01 Apr 2021 16:40
Operator : JC/MD
Sample : M1913-03RE
Misc : 5.0mL/MSVOA_X/WATER
ALS Vial : 14 Sample Multiplier: 1

Instrument :
MSVOA_X
ClientSampleId :
EB-01-040121RE

Quant Method : Z:\voasrv\HPCHEM1\MSVOA_X\Method\82X032421W.M
Quant Title : SW846 8260

TIC Library : C:\DATABASE\NIST11.L
TIC Integration Parameters: LSCINT.P

TIC Top Hit name	RT	EstConc	Units	Response	--Internal Standard--			
					#	RT	Resp	Conc
