

Data Path : Z:\voasrv\HPCHEM1\MSVOA_X\Data\VX040121\
 Data File : VX021718.D
 Acq On : 01 Apr 2021 19:01
 Operator : JC/MD
 Sample : M1895-01
 Misc : 5.0mL/MSVOA_X/WATER
 ALS Vial : 20 Sample Multiplier: 1

Instrument :
 MSVOA_X
 ClientSampleId :
 MW-1R

Integration Parameters: RTEINT.P

Integrator: RTE
 Smoothing : ON Filtering: 5
 Sampling : 1 Min Area: 3 % of largest Peak
 Start Thrs: 0.2 Max Peaks: 100
 Stop Thrs : 0 Peak Location: TOP

If leading or trailing edge < 100 prefer < Baseline drop else tangent >
 Peak separation: 5

Method : Z:\voasrv\HPCHEM1\MSVOA_X\Method\82X032421W.M
 Title : SW846 8260

Signal : TIC: VX021718.D\data.ms

peak #	R.T. min	first scan	max scan	last scan	PK TY	peak height	corr. area	corr. % max.	% of total
1	1.269	27	31	37	rBV2	3876	6589	1.77%	0.306%
2	1.375	45	49	55	rVB3	4113	5673	1.52%	0.263%
3	1.593	77	86	90	rVB5	3084	6785	1.82%	0.315%
4	1.870	128	133	141	rBV	10040	14795	3.97%	0.687%
5	2.587	245	255	260	rBV2	3252	6304	1.69%	0.293%
6	3.170	343	354	366	rVB2	6993	16629	4.46%	0.772%
7	5.464	733	744	759	rBV2	46426	134025	35.94%	6.222%
8	5.629	761	772	787	rBV	67277	185306	49.69%	8.603%
9	6.029	827	840	849	rBV	51232	133203	35.72%	6.184%
10	6.111	849	854	865	rVB2	7080	17927	4.81%	0.832%
11	6.829	966	976	991	rBV	111689	266764	71.53%	12.385%
12	8.694	1286	1293	1301	rBV	240915	372918	100.00%	17.313%
13	8.765	1301	1305	1312	rVB	5640	9552	2.56%	0.443%
14	10.094	1525	1531	1547	rBV	270205	360292	96.61%	16.727%
15	11.118	1700	1705	1716	rBV	216481	279321	74.90%	12.968%
16	12.059	1860	1865	1873	rBV	273728	337885	90.61%	15.687%

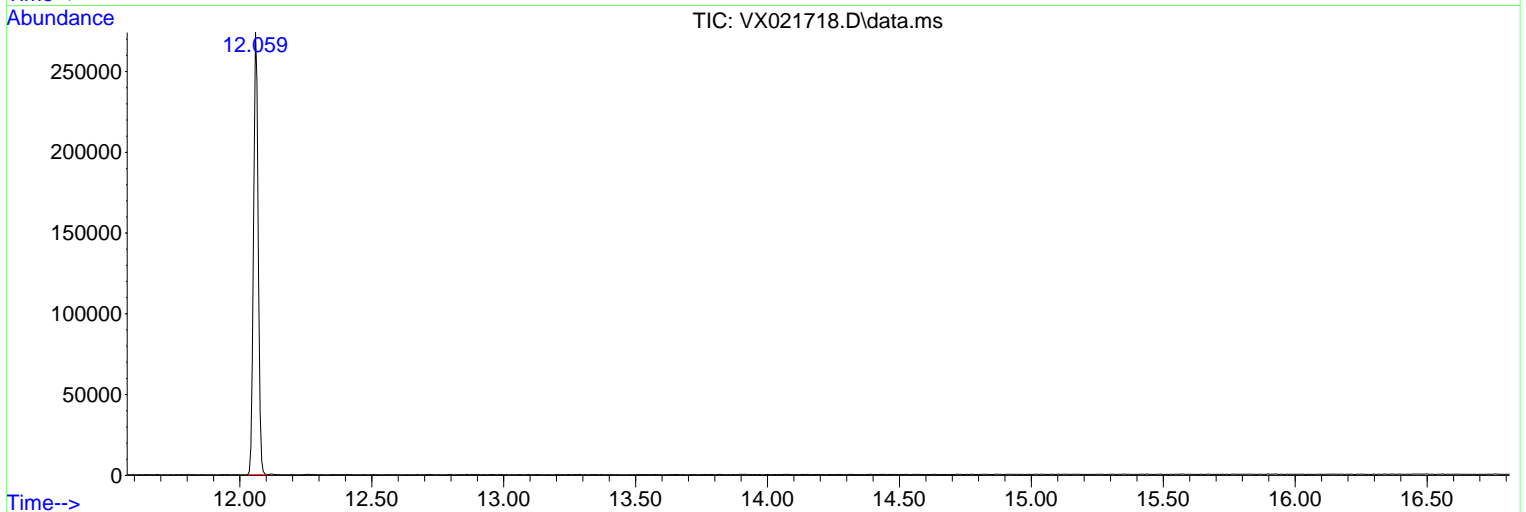
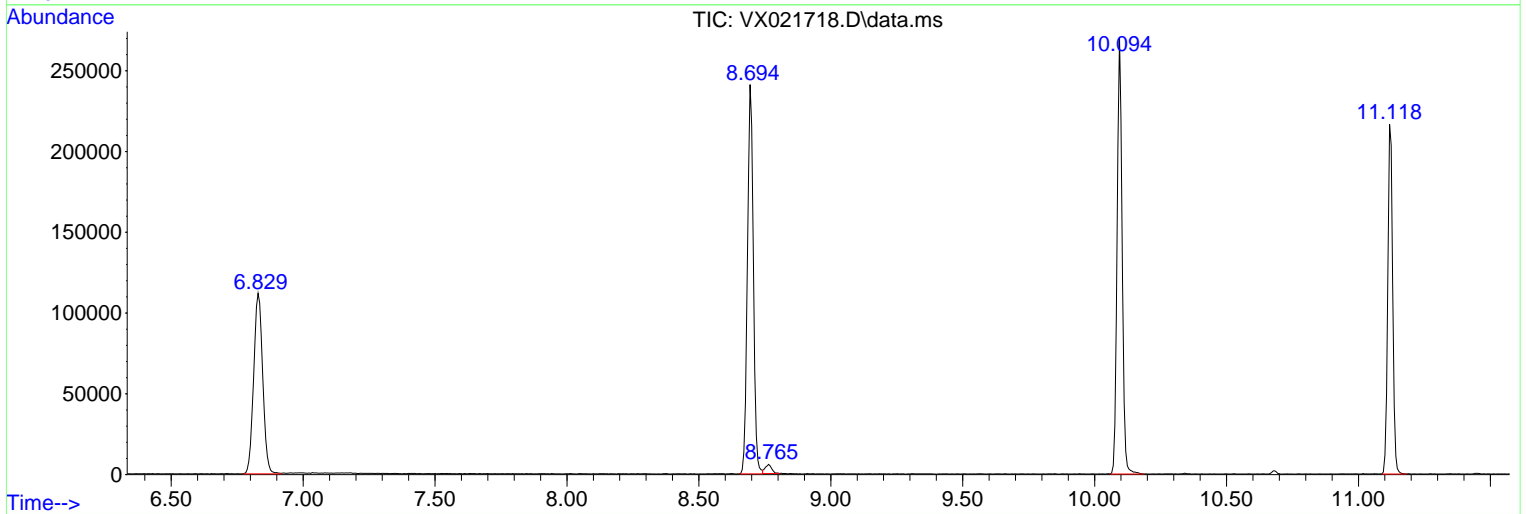
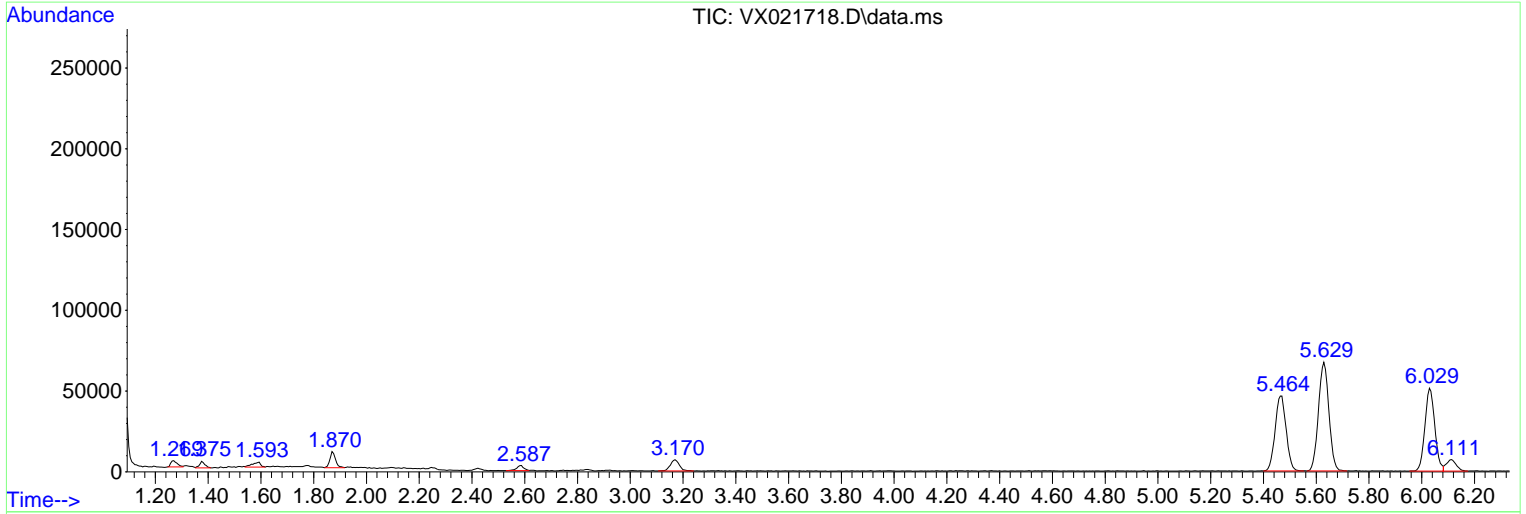
Sum of corrected areas: 2153968

Data Path : Z:\voasrv\HPCHEM1\MSVOA_X\Data\VX040121\
 Data File : VX021718.D
 Acq On : 01 Apr 2021 19:01
 Operator : JC/MD
 Sample : M1895-01
 Misc : 5.0mL/MSVOA_X/WATER
 ALS Vial : 20 Sample Multiplier: 1

Instrument :
 MSVOA_X
 ClientSampled :
 MW-1R

Quant Method : Z:\voasrv\HPCHEM1\MSVOA_X\Method\82X032421W.M
 Quant Title : SW846 8260

TIC Library : C:\DATABASE\NIST11.L
 TIC Integration Parameters: LSCINT.P



Library Search Compound Report

Data Path : Z:\voasrv\HPCHEM1\MSVOA_X\Data\VX040121\
Data File : VX021718.D
Acq On : 01 Apr 2021 19:01
Operator : JC/MD
Sample : M1895-01
Misc : 5.0mL/MSVOA_X/WATER
ALS Vial : 20 Sample Multiplier: 1

Instrument :
MSVOA_X
ClientSampled :
MW-1R

Quant Method : Z:\voasrv\HPCHEM1\MSVOA_X\Method\82X032421W.M
Quant Title : SW846 8260

TIC Library : C:\DATABASE\NIST11.L
TIC Integration Parameters: LSCINT.P

No Library Search Compounds Detected

Data Path : Z:\voasrv\HPCHEM1\MSVOA_X\Data\VX040121\
Data File : VX021718.D
Acq On : 01 Apr 2021 19:01
Operator : JC/MD
Sample : M1895-01
Misc : 5.0mL/MSVOA_X/WATER
ALS Vial : 20 Sample Multiplier: 1

Instrument :
MSVOA_X
ClientSampled :
MW-1R

Quant Method : Z:\voasrv\HPCHEM1\MSVOA_X\Method\82X032421W.M
Quant Title : SW846 8260

TIC Library : C:\DATABASE\NIST11.L
TIC Integration Parameters: LSCINT.P

TIC Top Hit name	RT	EstConc	Units	Response	--Internal Standard--		
					#	RT	Resp Conc
