

Data Path : Z:\voasrv\HPCHEM1\MSVOA_X\Data\VX040325\
 Data File : VX045560.D
 Acq On : 03 Apr 2025 10:58
 Operator : JC/MD
 Sample : VX0403MBL01
 Misc : 5.00g/10mL/100uL/5.00mL/MSVOA_X/MEOH
 ALS Vial : 3 Sample Multiplier: 1

Instrument :
 MSVOA_X
 ClientSampleId :
 VX0403MBL01

Quant Time: Apr 04 01:18:15 2025
 Quant Method : Z:\voasrv\HPCHEM1\MSVOA_X\Method\82X040225W.M
 Quant Title : SW846 8260
 QLast Update : Wed Apr 02 03:11:43 2025
 Response via : Initial Calibration

Compound	R.T.	QIon	Response	Conc	Units	Dev(Min)

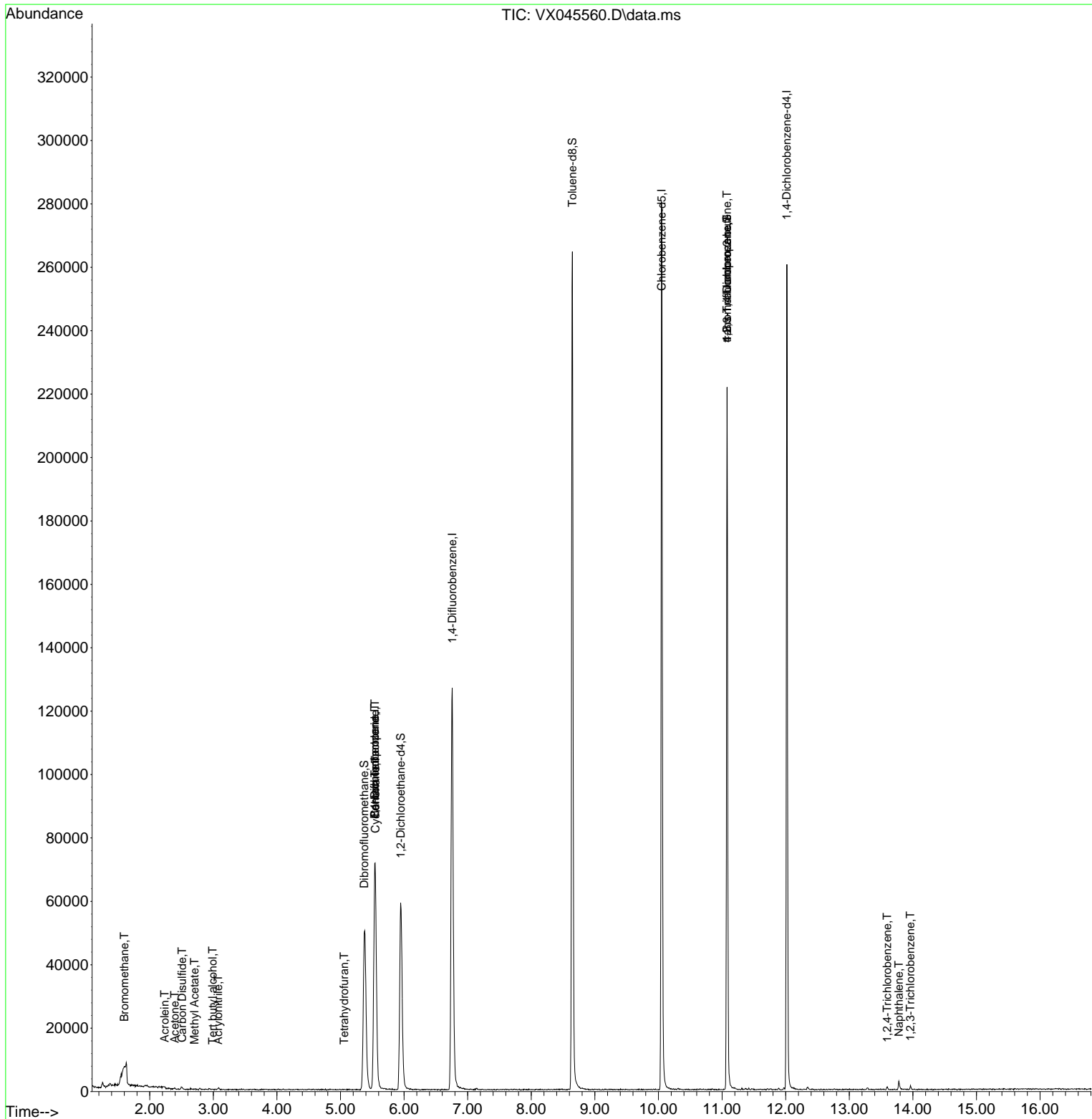
Internal Standards						
1) Pentafluorobenzene	5.537	168	62505	50.000	ug/l	-0.01
34) 1,4-Difluorobenzene	6.757	114	120795	50.000	ug/l	0.00
63) Chlorobenzene-d5	10.049	117	115240	50.000	ug/l	0.00
72) 1,4-Dichlorobenzene-d4	12.018	152	47839	50.000	ug/l	0.00
System Monitoring Compounds						
33) 1,2-Dichloroethane-d4	5.946	65	61068	53.425	ug/l	0.00
Spiked Amount	50.000	Range 74 - 125	Recovery	=	106.860%	
35) Dibromofluoromethane	5.373	113	45081	52.601	ug/l	0.00
Spiked Amount	50.000	Range 75 - 124	Recovery	=	105.200%	
50) Toluene-d8	8.647	98	153580	51.340	ug/l	0.00
Spiked Amount	50.000	Range 86 - 113	Recovery	=	102.680%	
62) 4-Bromofluorobenzene	11.079	95	56696	52.033	ug/l	0.00
Spiked Amount	50.000	Range 77 - 121	Recovery	=	104.060%	
Target Compounds						
						Qvalue
5) Bromomethane	1.599	94	207	0.497	ug/l #	3
11) Tert butyl alcohol	2.989	59	39	0.254	ug/l #	72
13) Acrolein	2.233	56	197	0.931	ug/l	91
15) Acrylonitrile	3.075	53	221	0.456	ug/l #	50
16) Acetone	2.392	43	441	0.940	ug/l #	47
17) Carbon Disulfide	2.508	76	1185	0.639	ug/l #	76
18) Methyl Acetate	2.703	43	221	0.205	ug/l #	54
29) Tetrahydrofuran	5.056	42	95	0.213	ug/l #	35
31) Cyclohexane	5.550	56	1876	1.338	ug/l #	53
36) 1,1-Dichloropropene	5.537	75	6159	5.322	ug/l #	51
38) Carbon Tetrachloride	5.544	117	6988	5.588	ug/l #	17
76) 1,2,3-Trichloropropane	11.079	75	33713	28.891	ug/l #	37
81) trans-1,4-Dichloro-2-b...	11.079	75	33713	98.052	ug/l #	1
93) 1,2,4-Trichlorobenzene	13.597	180	323	0.362	ug/l	90
95) Naphthalene	13.780	128	2563	0.772	ug/l #	90
96) 1,2,3-Trichlorobenzene	13.963	180	408	0.437	ug/l	89

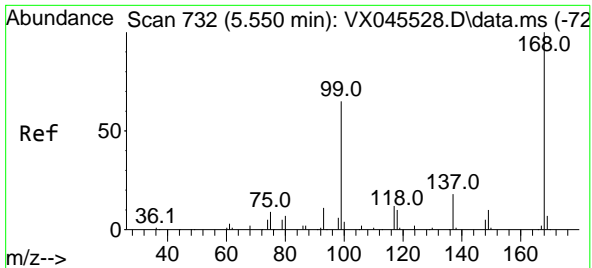
(#) = qualifier out of range (m) = manual integration (+) = signals summed

Data Path : Z:\voasrv\HPCHEM1\MSVOA_X\Data\VX040325\
 Data File : VX045560.D
 Acq On : 03 Apr 2025 10:58
 Operator : JC/MD
 Sample : VX0403MBL01
 Misc : 5.00g/10mL/100uL/5.00mL/MSVOA_X/MEOH
 ALS Vial : 3 Sample Multiplier: 1

Instrument :
 MSVOA_X
 ClientSampleId :
 VX0403MBL01

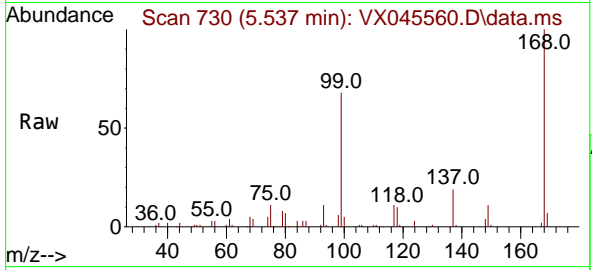
Quant Time: Apr 04 01:18:15 2025
 Quant Method : Z:\voasrv\HPCHEM1\MSVOA_X\Method\82X040225W.M
 Quant Title : SW846 8260
 QLast Update : Wed Apr 02 03:11:43 2025
 Response via : Initial Calibration



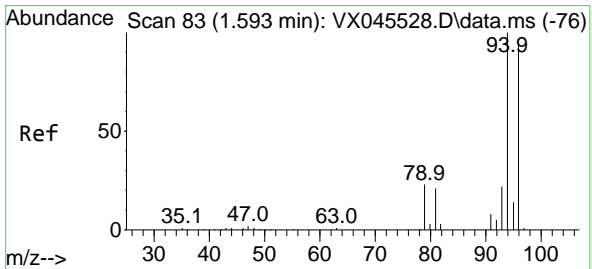
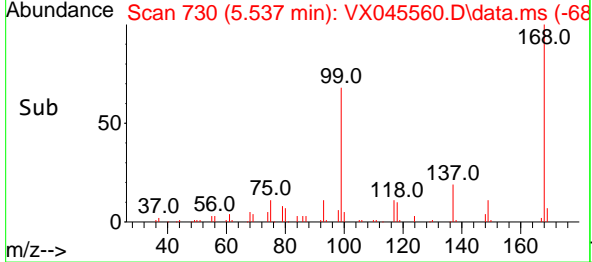
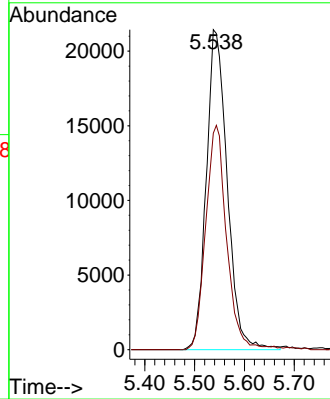


#1
 Pentafluorobenzene
 Concen: 50.000 ug/l
 RT: 5.537 min Scan# 71
 Delta R.T. -0.013 min
 Lab File: VX045560.D
 Acq: 03 Apr 2025 10:58

Instrument : MSVOA_X
 ClientSampleId : VX0403MBL01

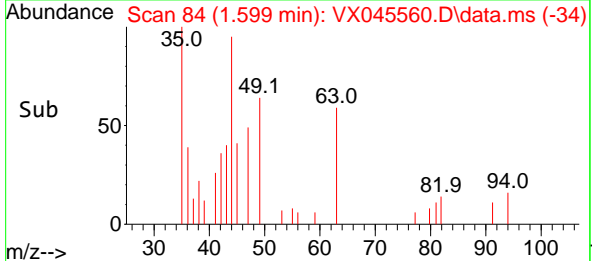
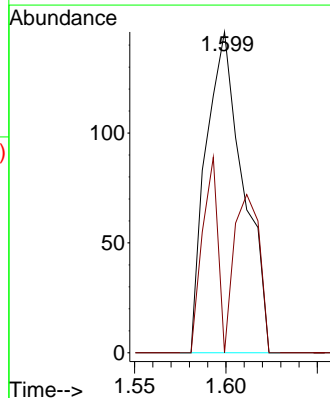
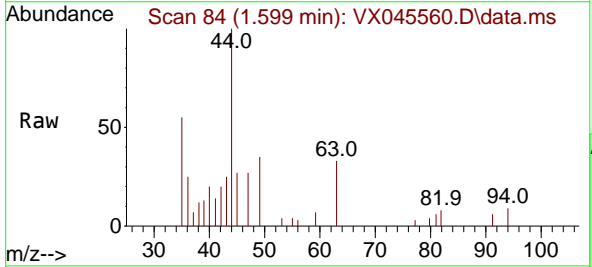


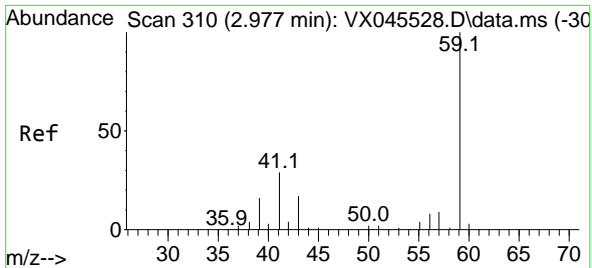
Tgt Ion:168 Resp: 62505
 Ion Ratio Lower Upper
 168 100
 99 67.6 52.3 78.5



#5
 Bromomethane
 Concen: 0.497 ug/l
 RT: 1.599 min Scan# 84
 Delta R.T. 0.006 min
 Lab File: VX045560.D
 Acq: 03 Apr 2025 10:58

Tgt Ion: 94 Resp: 207
 Ion Ratio Lower Upper
 94 100
 96 0.0 74.8 112.2#

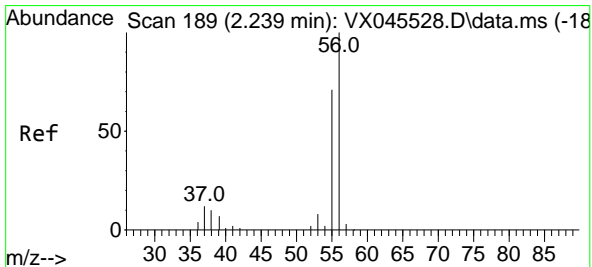
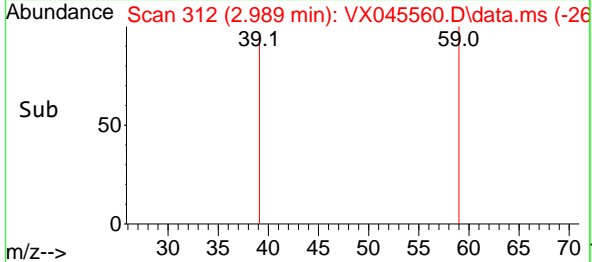
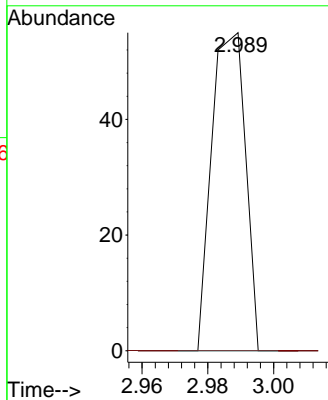
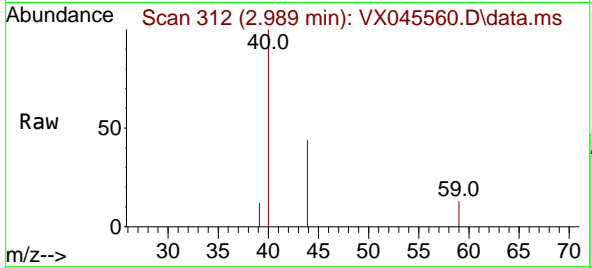




#11
 Tert butyl alcohol
 Concen: 0.254 ug/l
 RT: 2.989 min Scan# 311
 Delta R.T. 0.012 min
 Lab File: VX045560.D
 Acq: 03 Apr 2025 10:58

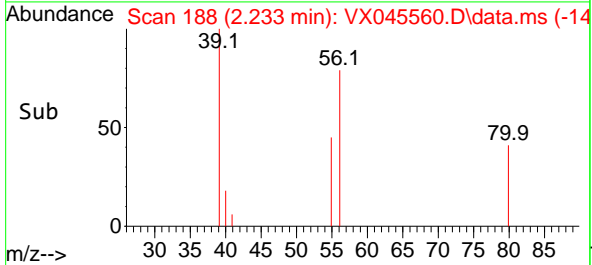
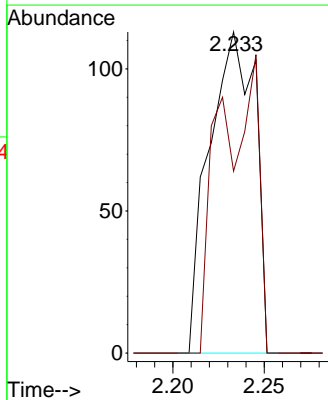
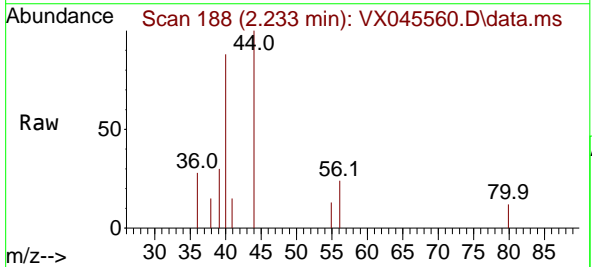
Instrument :
 MSVOA_X
 ClientSampleId :
 VX0403MBL01

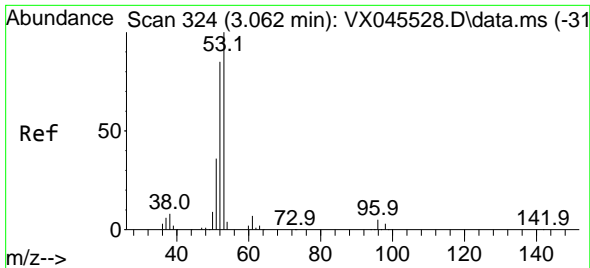
Tgt Ion: 59 Resp: 39
 Ion Ratio Lower Upper
 59 100
 57 0.0 8.6 12.8#



#13
 Acrolein
 Concen: 0.931 ug/l
 RT: 2.233 min Scan# 188
 Delta R.T. -0.006 min
 Lab File: VX045560.D
 Acq: 03 Apr 2025 10:58

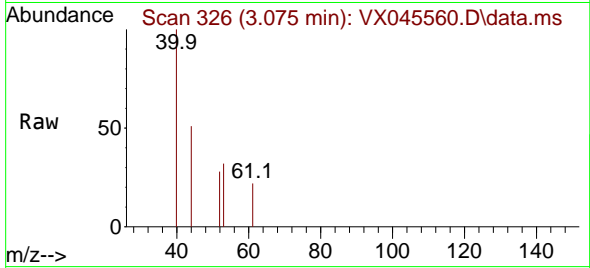
Tgt Ion: 56 Resp: 197
 Ion Ratio Lower Upper
 56 100
 55 77.7 56.2 84.2





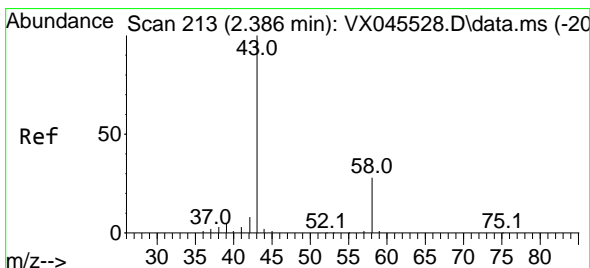
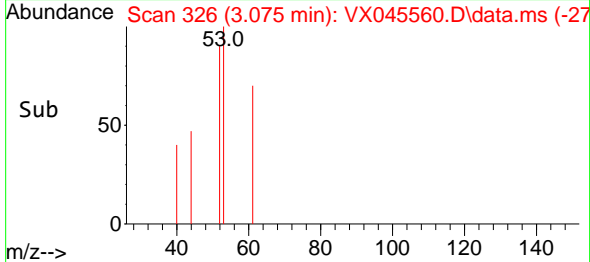
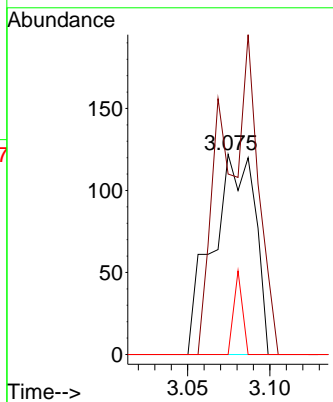
#15
 Acrylonitrile
 Concen: 0.456 ug/l
 RT: 3.075 min Scan# 31
 Delta R.T. 0.012 min
 Lab File: VX045560.D
 Acq: 03 Apr 2025 10:58

Instrument :
 MSVOA_X
 ClientSampleId :
 VX0403MBL01



Tgt Ion: 53 Resp: 221

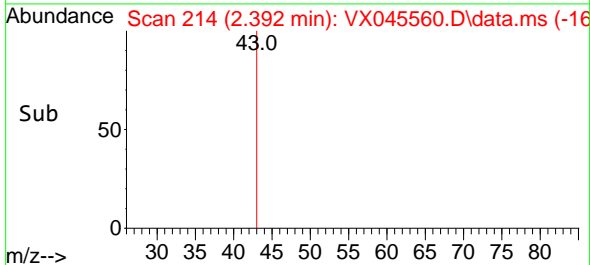
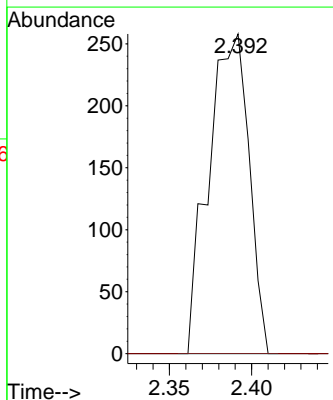
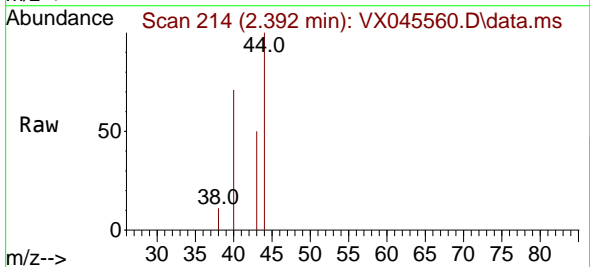
Ion	Ratio	Lower	Upper
53	100		
52	130.8	67.4	101.2#
51	8.6	29.9	44.9#

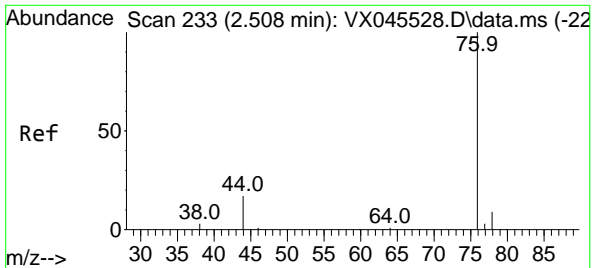


#16
 Acetone
 Concen: 0.940 ug/l
 RT: 2.392 min Scan# 214
 Delta R.T. 0.006 min
 Lab File: VX045560.D
 Acq: 03 Apr 2025 10:58

Tgt Ion: 43 Resp: 441

Ion	Ratio	Lower	Upper
43	100		
58	0.0	22.3	33.5#

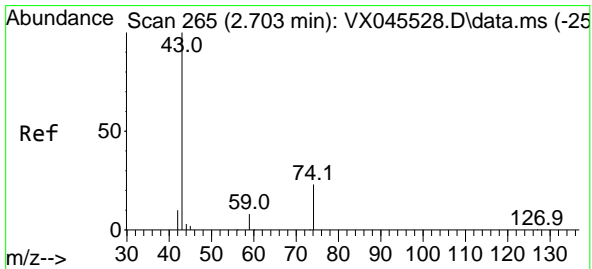
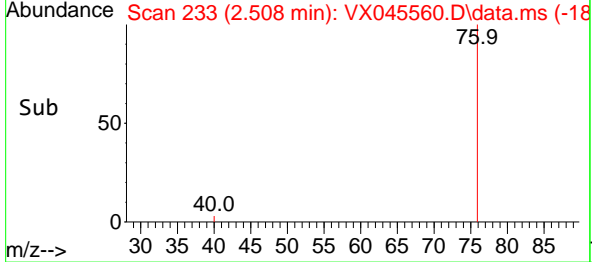
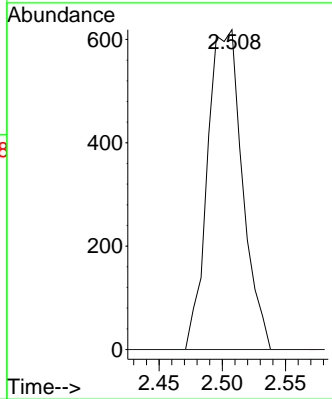
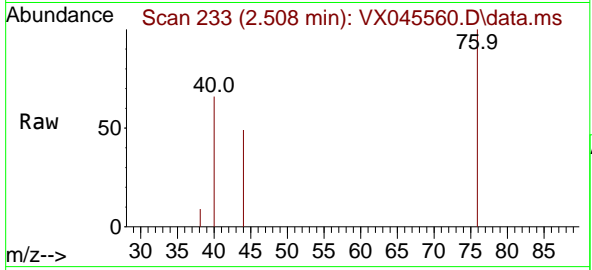




#17
 Carbon Disulfide
 Concen: 0.639 ug/l
 RT: 2.508 min Scan# 211
 Delta R.T. -0.000 min
 Lab File: VX045560.D
 Acq: 03 Apr 2025 10:58

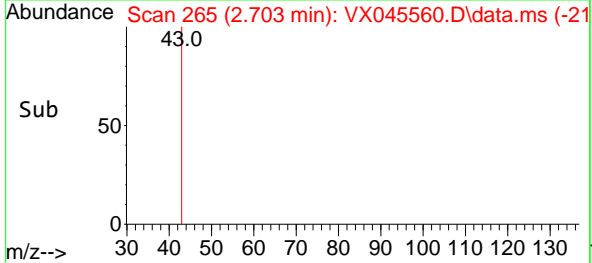
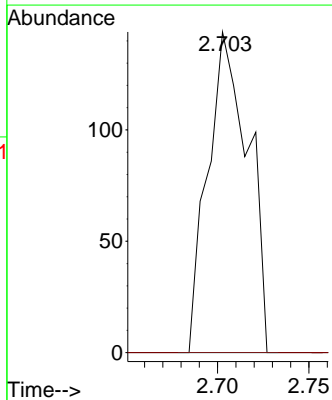
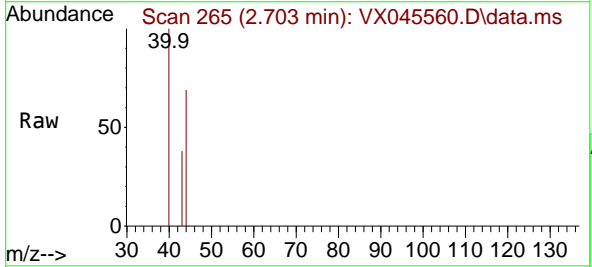
Instrument : MSVOA_X
 ClientSampleId : VX0403MBL01

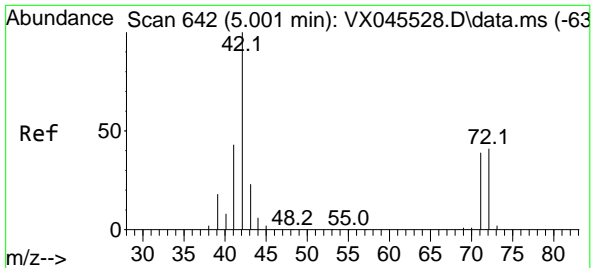
Tgt Ion: 76 Resp: 1185
 Ion Ratio Lower Upper
 76 100
 78 0.0 7.0 10.6#



#18
 Methyl Acetate
 Concen: 0.205 ug/l
 RT: 2.703 min Scan# 265
 Delta R.T. -0.000 min
 Lab File: VX045560.D
 Acq: 03 Apr 2025 10:58

Tgt Ion: 43 Resp: 221
 Ion Ratio Lower Upper
 43 100
 74 0.0 17.5 26.3#

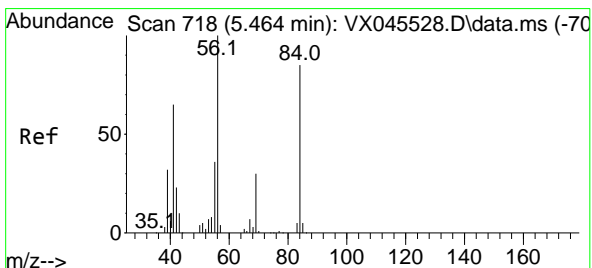
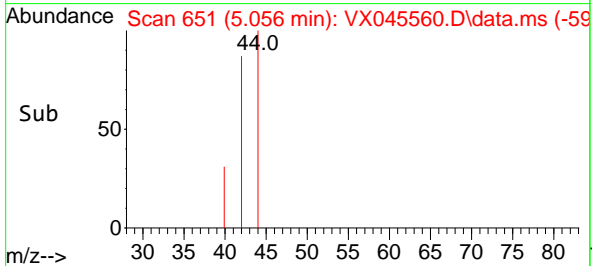
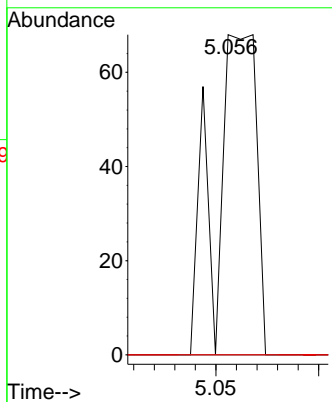
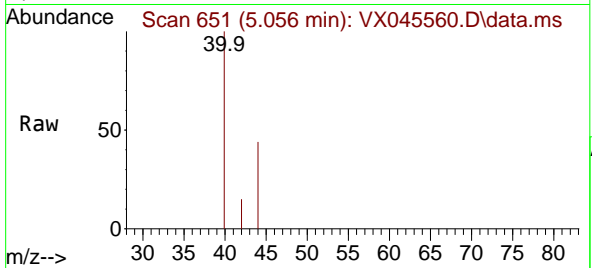




#29
 Tetrahydrofuran
 Concen: 0.213 ug/l
 RT: 5.056 min Scan# 61
 Delta R.T. 0.055 min
 Lab File: VX045560.D
 Acq: 03 Apr 2025 10:58

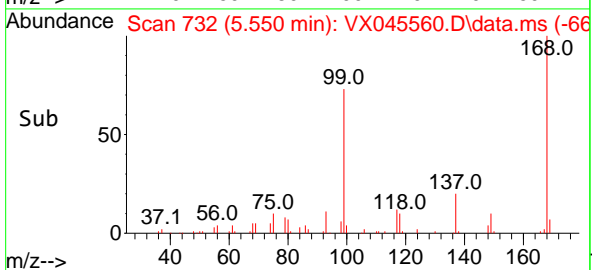
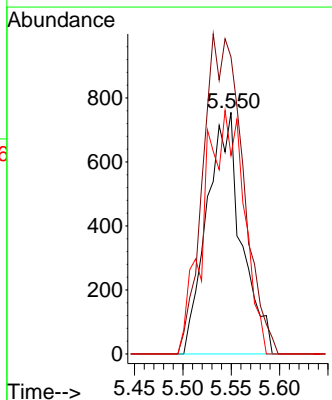
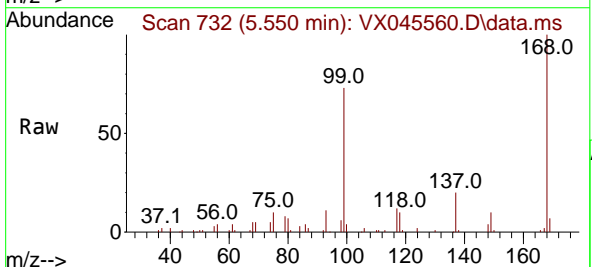
Instrument :
 MSVOA_X
 ClientSampleId :
 VX0403MBL01

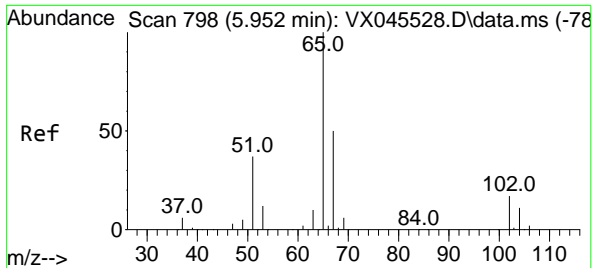
Tgt Ion	Resp	Lower	Upper
42	100		
72	0.0	33.4	50.0#
71	0.0	31.4	47.0#



#31
 Cyclohexane
 Concen: 1.338 ug/l
 RT: 5.550 min Scan# 732
 Delta R.T. 0.085 min
 Lab File: VX045560.D
 Acq: 03 Apr 2025 10:58

Tgt Ion	Resp	Lower	Upper
56	100		
69	122.9	23.6	35.4#
84	82.1	67.7	101.5

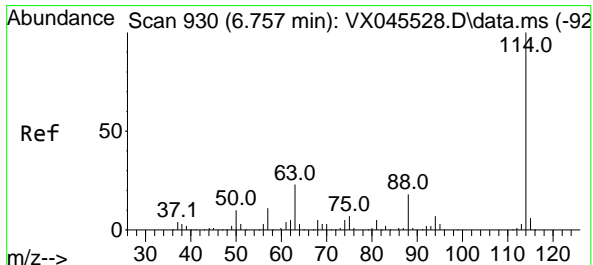
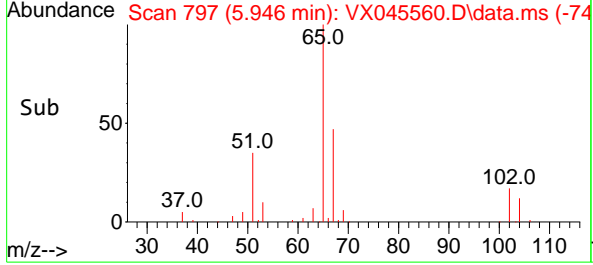
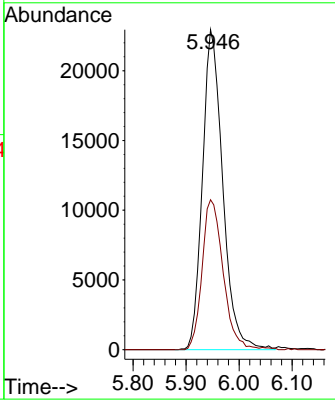
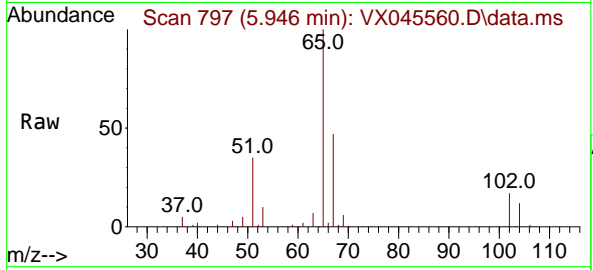




#33
 1,2-Dichloroethane-d4
 Concen: 53.425 ug/l
 RT: 5.946 min Scan# 798
 Delta R.T. -0.006 min
 Lab File: VX045560.D
 Acq: 03 Apr 2025 10:58

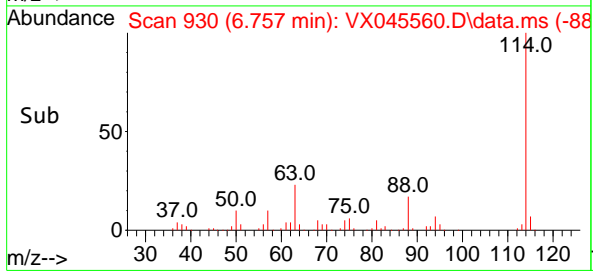
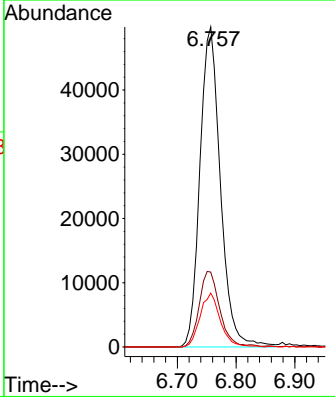
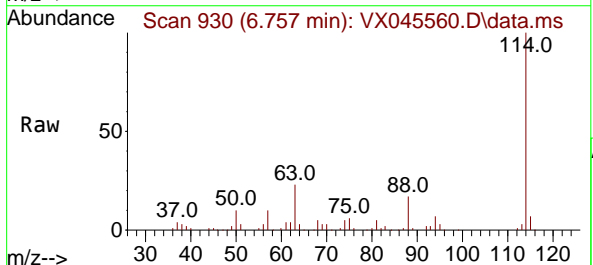
Instrument : MSVOA_X
 ClientSampleId : VX0403MBL01

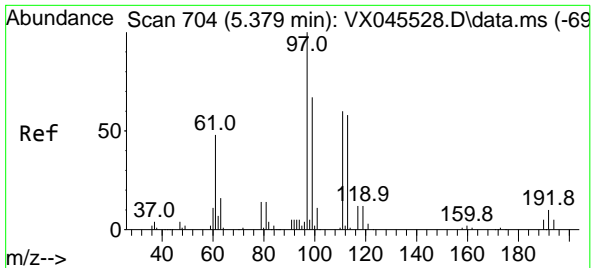
Tgt Ion	Resp	Lower	Upper
65	100		
67	48.3	0.0	99.0



#34
 1,4-Difluorobenzene
 Concen: 50.000 ug/l
 RT: 6.757 min Scan# 930
 Delta R.T. -0.000 min
 Lab File: VX045560.D
 Acq: 03 Apr 2025 10:58

Tgt Ion	Resp	Lower	Upper
114	100		
63	23.4	0.0	46.8
88	16.9	0.0	35.4

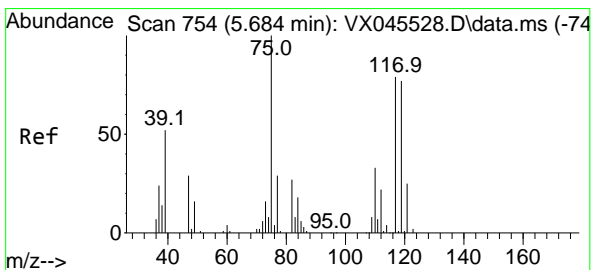
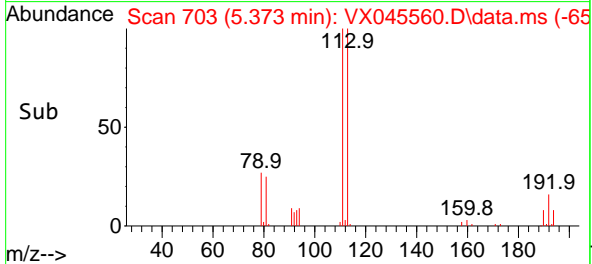
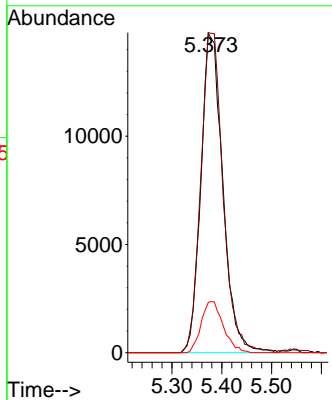
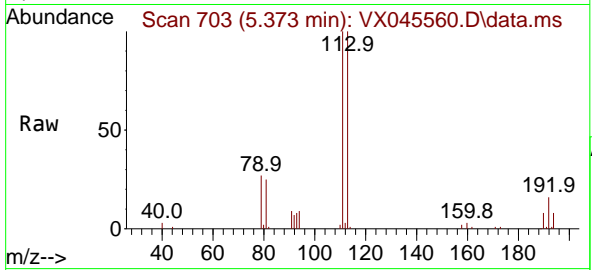




#35
 Dibromofluoromethane
 Concen: 52.601 ug/l
 RT: 5.373 min Scan# 703
 Delta R.T. -0.006 min
 Lab File: VX045560.D
 Acq: 03 Apr 2025 10:58

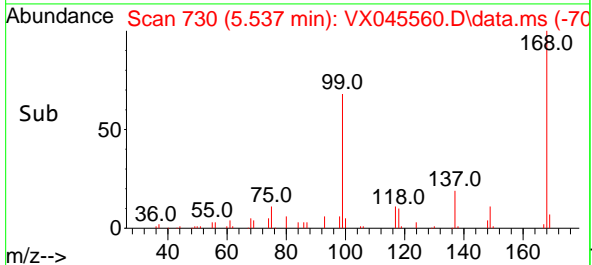
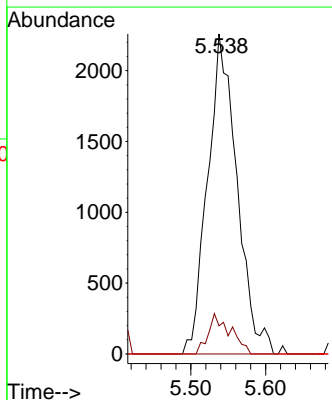
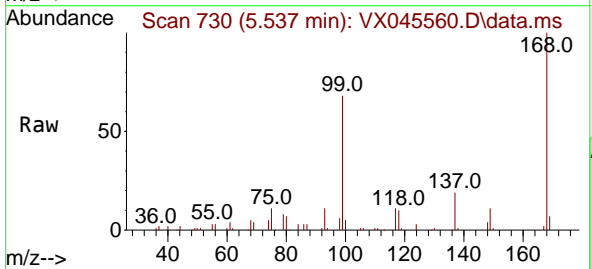
Instrument : MSVOA_X
 ClientSampleId : VX0403MBL01

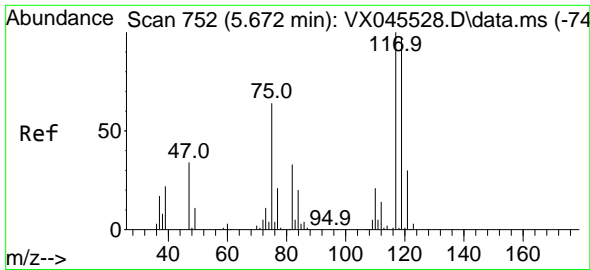
Tgt Ion	Resp	Lower	Upper
113	45081		
113	100		
111	101.6	81.8	122.6
192	16.1	13.8	20.6



#36
 1,1-Dichloropropene
 Concen: 5.322 ug/l
 RT: 5.537 min Scan# 730
 Delta R.T. -0.146 min
 Lab File: VX045560.D
 Acq: 03 Apr 2025 10:58

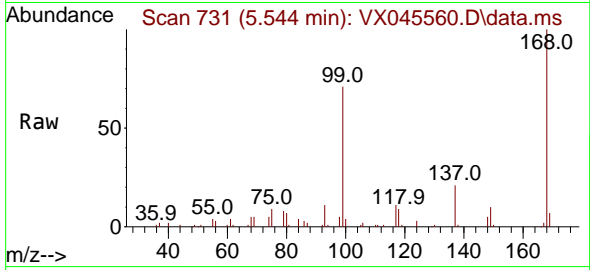
Tgt Ion	Resp	Lower	Upper
75	6159		
75	100		
110	9.5	16.9	50.6#
77	0.0	25.0	37.4#



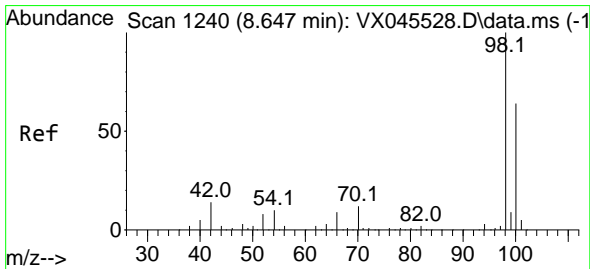
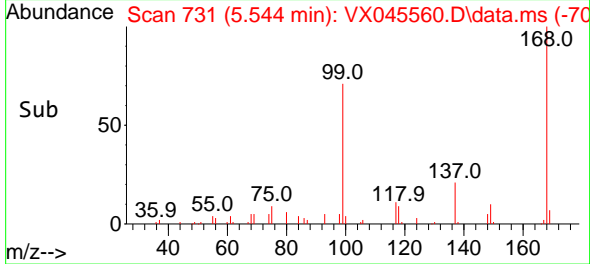
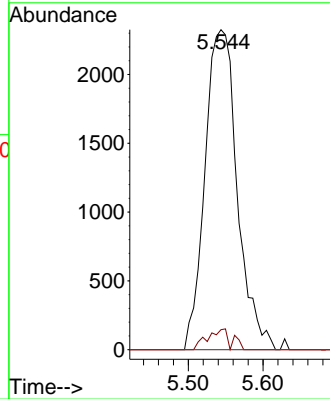


#38
 Carbon Tetrachloride
 Concen: 5.588 ug/l
 RT: 5.544 min Scan# 71
 Delta R.T. -0.128 min
 Lab File: VX045560.D
 Acq: 03 Apr 2025 10:58

Instrument :
 MSVOA_X
 ClientSampleId :
 VX0403MBL01

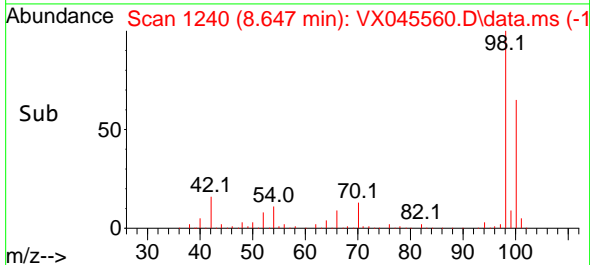
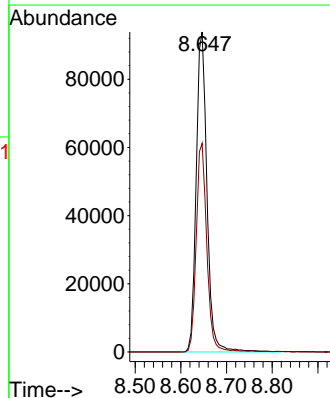
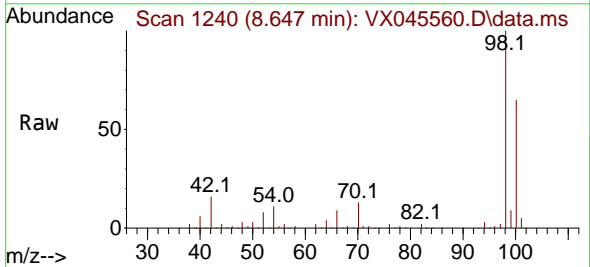


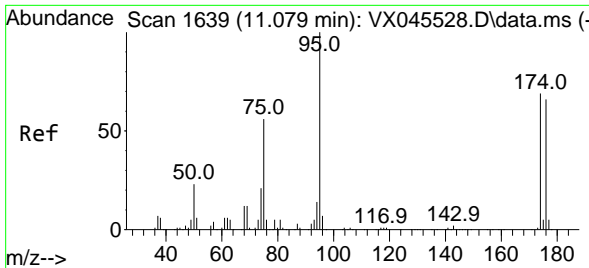
Tgt Ion:117 Resp: 6988
 Ion Ratio Lower Upper
 117 100
 119 6.2 76.9 115.3#
 121 0.0 24.2 36.2#



#50
 Toluene-d8
 Concen: 51.340 ug/l
 RT: 8.647 min Scan# 1240
 Delta R.T. -0.000 min
 Lab File: VX045560.D
 Acq: 03 Apr 2025 10:58

Tgt Ion: 98 Resp: 153580
 Ion Ratio Lower Upper
 98 100
 100 64.3 52.2 78.4



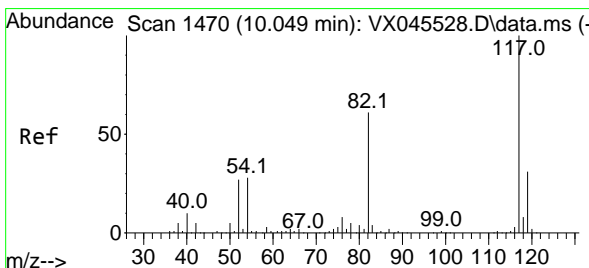
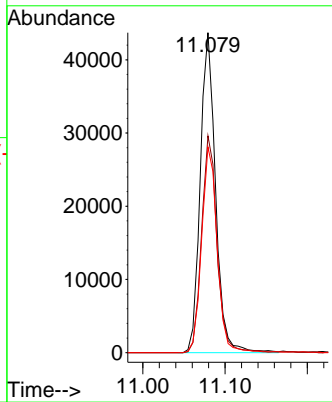
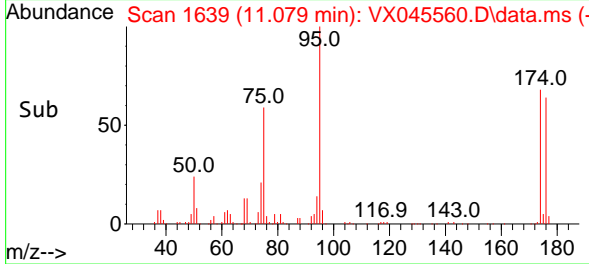
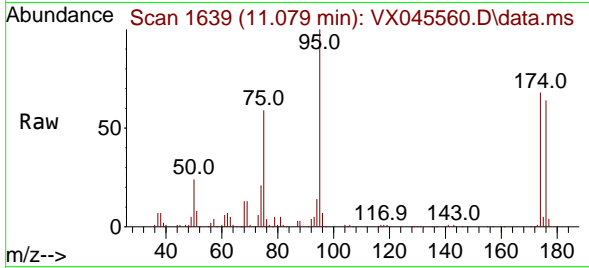


#62
 4-Bromofluorobenzene
 Concen: 52.033 ug/l
 RT: 11.079 min Scan# 1639
 Delta R.T. -0.000 min
 Lab File: VX045560.D
 Acq: 03 Apr 2025 10:58

Instrument : MSVOA_X
 ClientSampleId : VX0403MBL01

Tgt Ion: 95 Resp: 56696

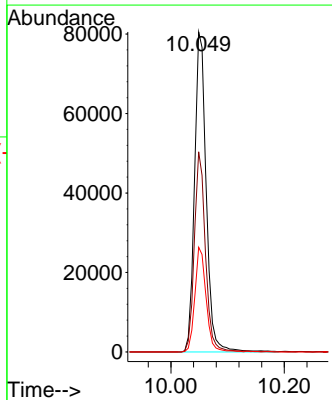
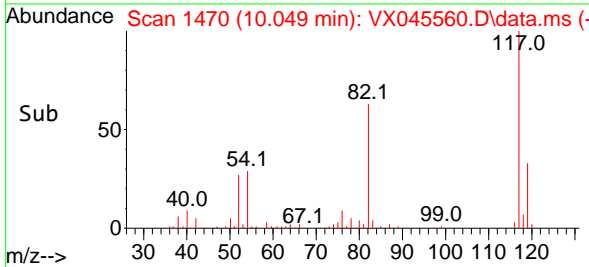
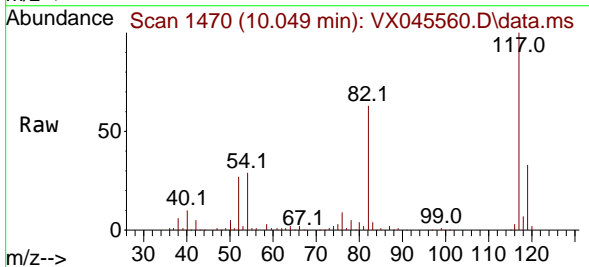
Ion	Ratio	Lower	Upper
95	100		
174	68.4	0.0	135.8
176	65.3	0.0	131.4

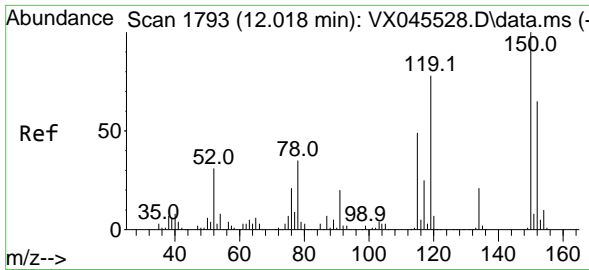


#63
 Chlorobenzene-d5
 Concen: 50.000 ug/l
 RT: 10.049 min Scan# 1470
 Delta R.T. -0.000 min
 Lab File: VX045560.D
 Acq: 03 Apr 2025 10:58

Tgt Ion: 117 Resp: 115240

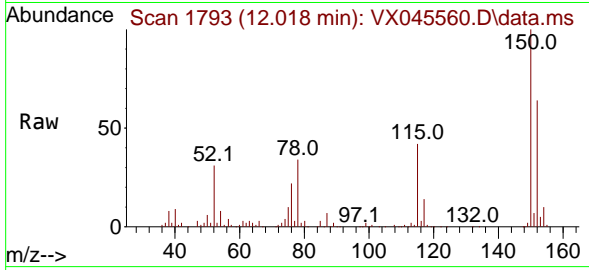
Ion	Ratio	Lower	Upper
117	100		
82	62.5	49.2	73.8
119	32.7	25.1	37.7



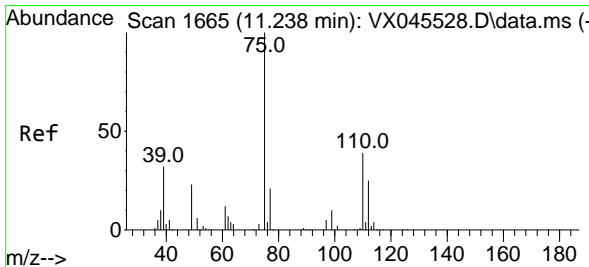
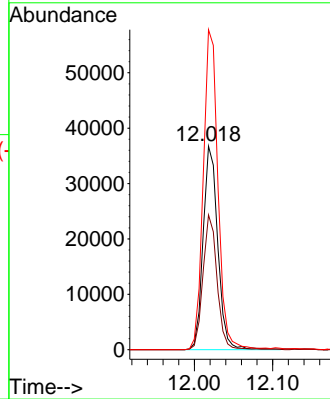
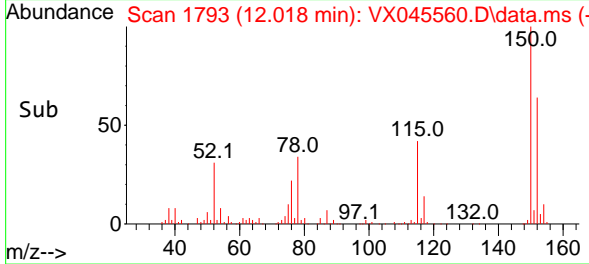


#72
 1,4-Dichlorobenzene-d4
 Concen: 50.000 ug/l
 RT: 12.018 min Scan# 1
 Delta R.T. -0.000 min
 Lab File: VX045560.D
 Acq: 03 Apr 2025 10:58

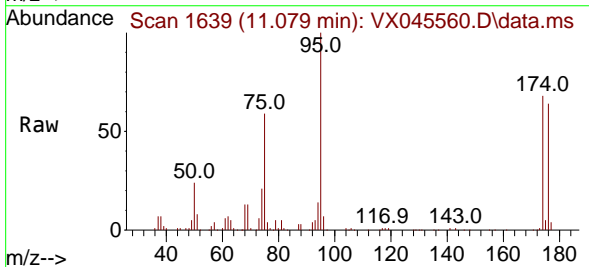
Instrument : MSVOA_X
 ClientSampleId : VX0403MBL01



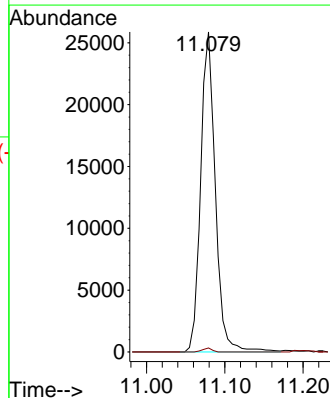
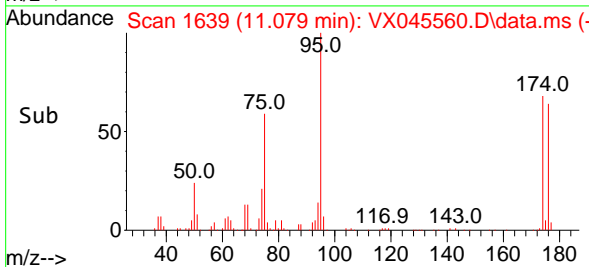
Tgt Ion:152 Resp: 47839
 Ion Ratio Lower Upper
 152 100
 115 63.7 46.9 140.7
 150 157.2 0.0 349.4

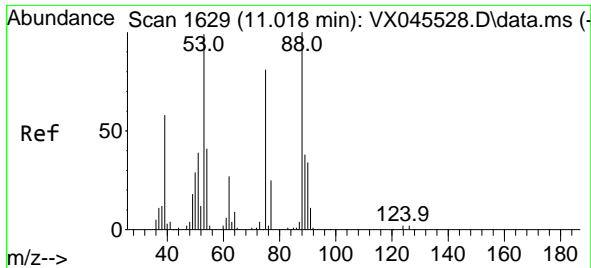


#76
 1,2,3-Trichloropropane
 Concen: 28.891 ug/l
 RT: 11.079 min Scan# 1639
 Delta R.T. -0.159 min
 Lab File: VX045560.D
 Acq: 03 Apr 2025 10:58



Tgt Ion: 75 Resp: 33713
 Ion Ratio Lower Upper
 75 100
 77 0.8 20.0 59.9#

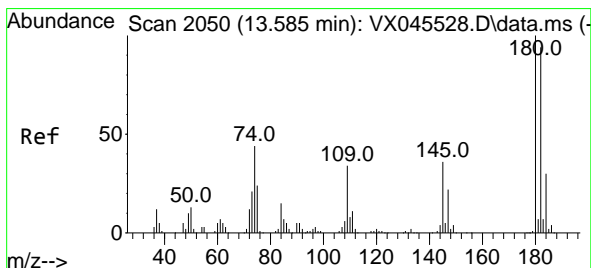
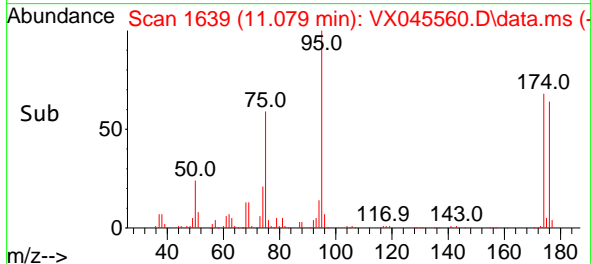
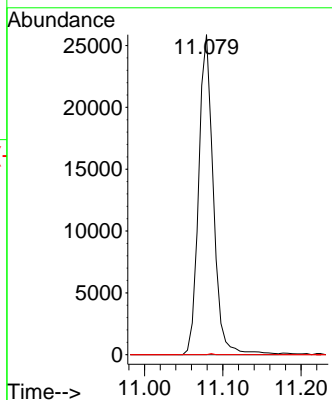
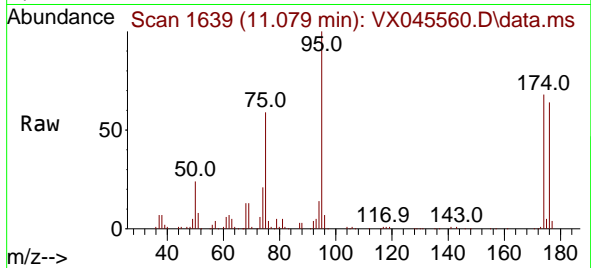




#81
 trans-1,4-Dichloro-2-butene
 Concen: 98.052 ug/l
 RT: 11.079 min Scan# 1
 Delta R.T. 0.061 min
 Lab File: VX045560.D
 Acq: 03 Apr 2025 10:58

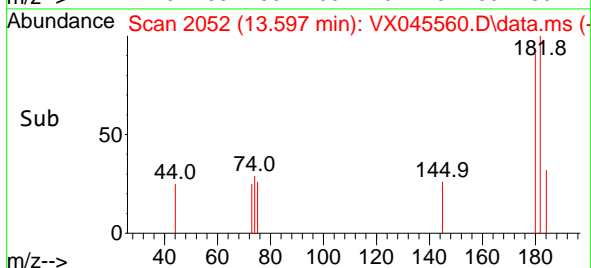
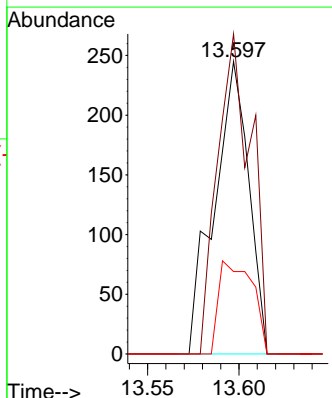
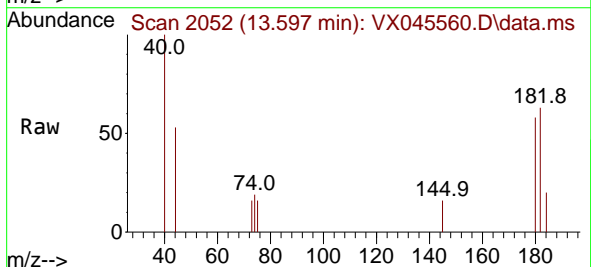
Instrument :
 MSVOA_X
 ClientSampleId :
 VX0403MBL01

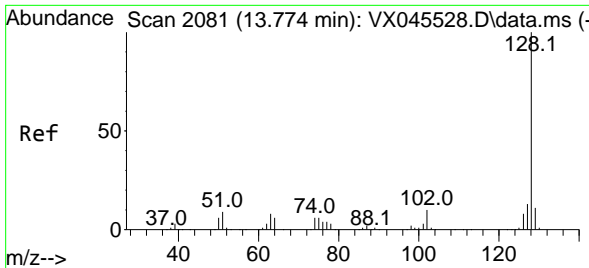
Tgt Ion: 75 Resp: 33713
 Ion Ratio Lower Upper
 75 100
 53 0.0 101.8 152.6#
 89 0.1 37.2 55.8#



#93
 1,2,4-Trichlorobenzene
 Concen: 0.362 ug/l
 RT: 13.597 min Scan# 2052
 Delta R.T. 0.012 min
 Lab File: VX045560.D
 Acq: 03 Apr 2025 10:58

Tgt Ion:180 Resp: 323
 Ion Ratio Lower Upper
 180 100
 182 106.2 47.9 143.6
 145 30.7 17.9 53.8

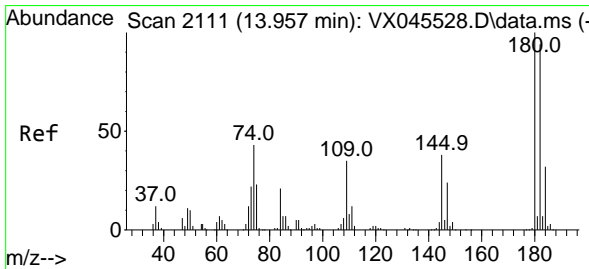
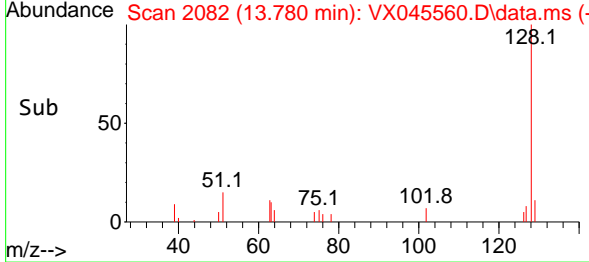
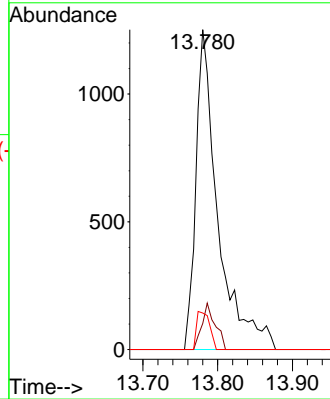
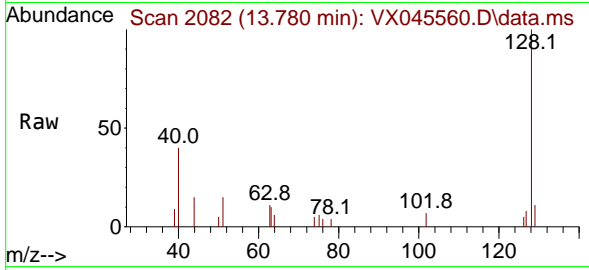




#95
 Naphthalene
 Concen: 0.772 ug/l
 RT: 13.780 min Scan# 2082
 Delta R.T. 0.006 min
 Lab File: VX045560.D
 Acq: 03 Apr 2025 10:58

Instrument : MSVOA_X
 ClientSampleId : VX0403MBL01

Tgt Ion	Resp	Lower	Upper
128	2563	100	100
127	8.8	10.3	15.5#
129	7.0	8.6	12.8#



#96
 1,2,3-Trichlorobenzene
 Concen: 0.437 ug/l
 RT: 13.963 min Scan# 2112
 Delta R.T. 0.006 min
 Lab File: VX045560.D
 Acq: 03 Apr 2025 10:58

Tgt Ion	Resp	Lower	Upper
180	408	100	100
182	106.6	47.3	141.8
145	31.4	18.2	54.6

