

Data Path : Z:\voasrv\HPCHEM1\MSVOA_X\Data\VX040422\
 Data File : VX027971.D
 Acq On : 04 Apr 2022 20:27
 Operator : JC/MD
 Sample : N2253-06
 Misc : 5.0mL/MSVOA_X/WATER
 ALS Vial : 26 Sample Multiplier: 1

Instrument :
 MSVOA_X
 ClientSampleId :
 2822S

Integration Parameters: RTEINT.P

Integrator: RTE
 Smoothing : OFF
 Sampling : 1
 Start Thrs: 0.2
 Stop Thrs : 0

Filtering: 5
 Min Area: 1 % of largest Peak
 Max Peaks: 100
 Peak Location: TOP

If leading or trailing edge < 100 prefer < Baseline drop else tangent >
 Peak separation: 5

Method : Z:\voasrv\HPCHEM1\MSVOA_X\Method\82X032922W.M
 Title : SW846 8260

Signal : TIC: VX027971.D\data.ms

peak #	R.T. min	first scan	max scan	last scan	PK TY	peak height	corr. area	corr. % max.	% of total
1	2.373	205	211	229	rBV	430800	701091	55.77%	4.346%
2	2.526	229	236	247	rBV	80881	147483	11.73%	0.914%
3	2.953	298	306	314	rBV2	15105	33302	2.65%	0.206%
4	4.556	559	569	584	rBV	56182	157816	12.55%	0.978%
5	5.001	630	642	654	rBV3	5483	18677	1.49%	0.116%
6	5.391	692	706	722	rBV	54539	158816	12.63%	0.985%
7	5.556	722	733	745	rBV2	99319	279308	22.22%	1.732%
8	5.958	789	799	811	rBV2	56517	149523	11.89%	0.927%
9	6.635	901	910	919	rBV	10773	28213	2.24%	0.175%
10	6.763	919	931	950	rVV	145707	359826	28.62%	2.231%
11	7.458	1038	1045	1061	rVB	40342	79565	6.33%	0.493%
12	8.574	1223	1228	1234	rBV	57432	88650	7.05%	0.550%
13	8.653	1234	1241	1247	rVV	290627	458633	36.48%	2.843%
14	8.720	1247	1252	1256	rVB3	8091	13503	1.07%	0.084%
15	8.805	1262	1266	1277	rVB	26635	44087	3.51%	0.273%
16	9.031	1297	1303	1310	rBV	12424	19388	1.54%	0.120%
17	9.244	1332	1338	1344	rBV	68546	104747	8.33%	0.649%
18	9.311	1344	1349	1357	rVB	11900	19362	1.54%	0.120%
19	9.433	1364	1369	1376	rBV	43574	65483	5.21%	0.406%
20	9.653	1396	1405	1408	rBV3	8181	15089	1.20%	0.094%
21	10.055	1461	1471	1476	rBV	302775	411364	32.72%	2.550%
22	10.214	1491	1497	1499	rBV3	9353	14135	1.12%	0.088%
23	10.244	1499	1502	1507	rVV	12151	16365	1.30%	0.101%
24	10.299	1507	1511	1519	rVB	35570	50062	3.98%	0.310%
25	10.384	1519	1525	1534	rBV2	20129	32449	2.58%	0.201%
26	10.506	1538	1545	1548	rBV	15819	20278	1.61%	0.126%
27	10.683	1570	1574	1582	rVB	32597	39858	3.17%	0.247%
28	10.768	1582	1588	1594	rBV	41739	55434	4.41%	0.344%
29	10.878	1599	1606	1614	rVB5	8410	22067	1.76%	0.137%
30	11.085	1634	1640	1644	rBV2	240612	385476	30.66%	2.390%
31	11.232	1659	1664	1667	rBV	20022	31741	2.52%	0.197%
32	11.274	1667	1671	1674	rVV3	32287	58527	4.66%	0.363%
33	11.299	1674	1675	1679	rVV2	30854	33889	2.70%	0.210%
34	11.360	1679	1685	1693	rVB	45640	73523	5.85%	0.456%
35	11.482	1699	1705	1714	rBV4	48235	123351	9.81%	0.765%
36	11.604	1721	1725	1731	rBV	27086	47776	3.80%	0.296%

Data Path : Z:\voasrv\HPCHEM1\MSVOA_X\Data\VX040422\
 Data File : VX027971.D
 Acq On : 04 Apr 2022 20:27
 Operator : JC/MD
 Sample : N2253-06
 Misc : 5.0mL/MSVOA_X/WATER
 ALS Vial : 26 Sample Multiplier: 1

Instrument :
 MSVOA_X
 ClientSampleId :
 2822S

Integration Parameters: RTEINT.P

Integrator: RTE
 Smoothing : OFF Filtering: 5
 Sampling : 1 Min Area: 1 % of largest Peak
 Start Thrs: 0.2 Max Peaks: 100
 Stop Thrs : 0 Peak Location: TOP

If leading or trailing edge < 100 prefer < Baseline drop else tangent >
 Peak separation: 5

Method : Z:\voasrv\HPCHEM1\MSVOA_X\Method\82X032922W.M
 Title : SW846 8260

37	11.750	1742	1749	1755	rVB	49409	74634	5.94%	0.463%
38	11.841	1759	1764	1768	rBV	50416	67523	5.37%	0.419%
39	11.890	1768	1772	1776	rVV3	25554	39020	3.10%	0.242%
40	11.933	1776	1779	1783	rVV	70923	97443	7.75%	0.604%
41	11.975	1783	1786	1789	rVB	37481	43525	3.46%	0.270%
42	12.024	1789	1794	1799	rBV	310096	388924	30.94%	2.411%
43	12.128	1804	1811	1813	rBV	52903	91662	7.29%	0.568%
44	12.152	1813	1815	1819	rVB	58315	57807	4.60%	0.358%
45	12.219	1821	1826	1835	rBV	980331	1176578	93.59%	7.294%
46	12.305	1836	1840	1843	rVV2	43601	71703	5.70%	0.445%
47	12.335	1843	1845	1848	rVB	13402	13674	1.09%	0.085%
48	12.427	1856	1860	1863	rBV2	18224	26766	2.13%	0.166%
49	12.585	1879	1886	1891	rBV2	91645	124918	9.94%	0.774%
50	12.664	1896	1899	1901	rVV	20326	27978	2.23%	0.173%
51	12.689	1901	1903	1907	rVB2	23574	28125	2.24%	0.174%
52	12.768	1912	1916	1918	rBV	84323	108940	8.67%	0.675%
53	12.792	1918	1920	1926	rVV2	53585	64279	5.11%	0.399%
54	12.859	1926	1931	1937	rVV	477384	608177	48.37%	3.770%
55	12.975	1945	1950	1952	rBV	106827	142259	11.32%	0.882%
56	13.024	1956	1958	1960	rVV2	52902	70822	5.63%	0.439%
57	13.054	1960	1963	1968	rVV2	326491	607019	48.28%	3.763%
58	13.103	1968	1971	1974	rVV	897534	1257223	100.00%	7.794%
59	13.134	1974	1976	1986	rVV3	545844	1054979	83.91%	6.540%
60	13.219	1986	1990	1994	rVV	173306	263324	20.94%	1.633%
61	13.256	1994	1996	2002	rVV3	60251	97552	7.76%	0.605%
62	13.341	2006	2010	2017	rVV	131021	193962	15.43%	1.202%
63	13.420	2017	2023	2029	rVV	173118	260685	20.73%	1.616%
64	13.493	2030	2035	2036	rVV4	28146	50139	3.99%	0.311%
65	13.530	2037	2041	2043	rVV	94919	162963	12.96%	1.010%
66	13.560	2043	2046	2048	rVV3	109294	179536	14.28%	1.113%
67	13.585	2048	2050	2053	rVV	178631	256460	20.40%	1.590%
68	13.621	2053	2056	2063	rVV3	135801	311659	24.79%	1.932%
69	13.695	2064	2068	2071	rVV	167596	269605	21.44%	1.671%
70	13.731	2071	2074	2081	rVV	576472	890089	70.80%	5.518%
71	13.804	2082	2086	2087	rVV2	101407	164058	13.05%	1.017%
72	13.829	2087	2090	2093	rVV2	189175	322882	25.68%	2.002%
73	13.859	2093	2095	2097	rVV	158784	197446	15.70%	1.224%
74	13.890	2097	2100	2113	rVV	518109	862547	68.61%	5.347%
75	13.981	2113	2115	2128	rVB5	22087	52231	4.15%	0.324%
76	14.134	2136	2140	2146	rVB	20100	29587	2.35%	0.183%

Data Path : Z:\voasrv\HPCHEM1\MSVOA_X\Data\VX040422\
 Data File : VX027971.D
 Acq On : 04 Apr 2022 20:27
 Operator : JC/MD
 Sample : N2253-06
 Misc : 5.0mL/MSVOA_X/WATER
 ALS Vial : 26 Sample Multiplier: 1

Instrument :
 MSVOA_X
 ClientSampleId :
 2822S

Integration Parameters: RTEINT.P
 Integrator: RTE
 Smoothing : OFF Filtering: 5
 Sampling : 1 Min Area: 1 % of largest Peak
 Start Thrs: 0.2 Max Peaks: 100
 Stop Thrs : 0 Peak Location: TOP

If leading or trailing edge < 100 prefer < Baseline drop else tangent >
 Peak separation: 5

Method : Z:\voasrv\HPCHEM1\MSVOA_X\Method\82X032922W.M
 Title : SW846 8260

77	14.194	2146	2150	2160	rBV	136266	181775	14.46%	1.127%
78	14.365	2174	2178	2180	rBV3	11410	14805	1.18%	0.092%
79	14.396	2180	2183	2186	rVV2	29367	43623	3.47%	0.270%
80	14.432	2186	2189	2195	rVV2	42553	79650	6.34%	0.494%
81	14.499	2195	2200	2206	rVV5	18101	49848	3.96%	0.309%
82	14.566	2207	2211	2218	rVV	105230	190636	15.16%	1.182%
83	14.627	2218	2221	2227	rVV	82438	123472	9.82%	0.765%
84	14.688	2227	2231	2241	rVV	80300	147909	11.76%	0.917%
85	14.786	2245	2247	2252	rVB4	9432	13733	1.09%	0.085%
86	15.213	2312	2317	2320	rBV2	33467	53904	4.29%	0.334%
87	15.249	2320	2323	2332	rVB	30340	46710	3.72%	0.290%
88	15.414	2346	2350	2353	rVB4	9718	16456	1.31%	0.102%

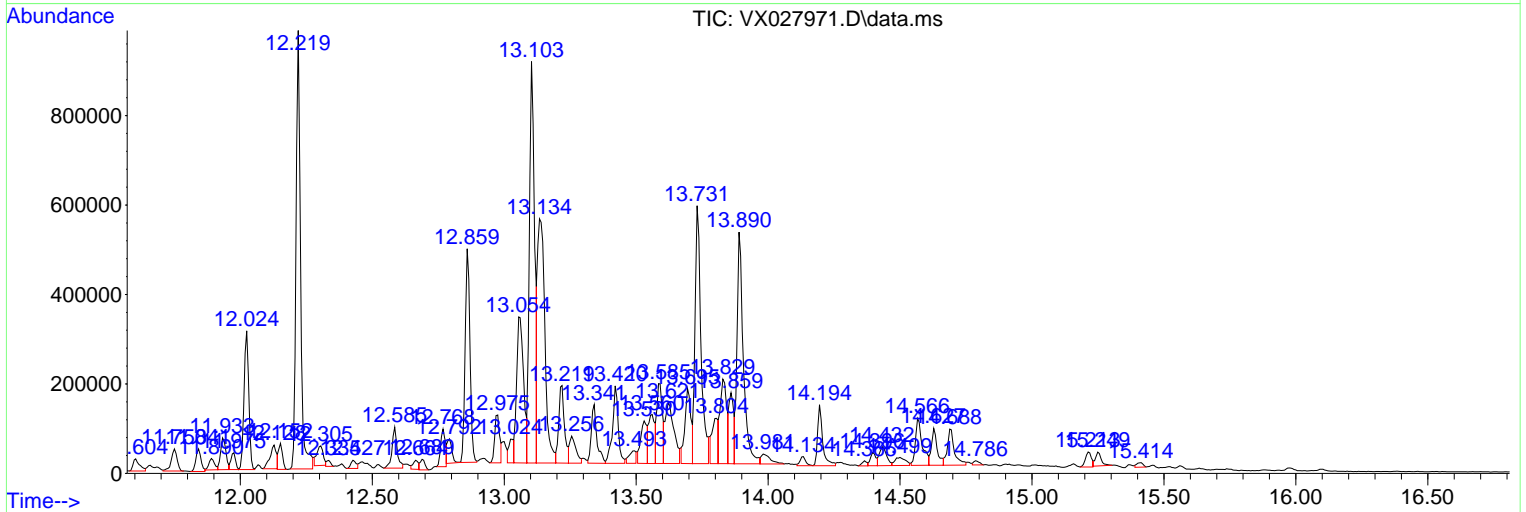
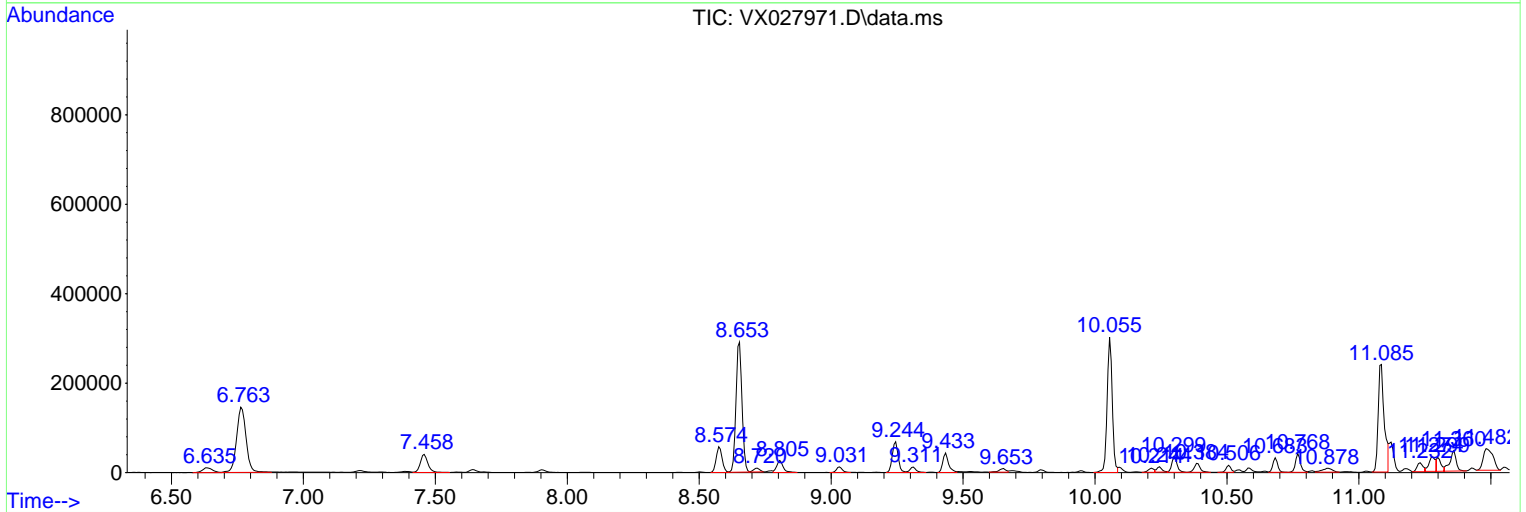
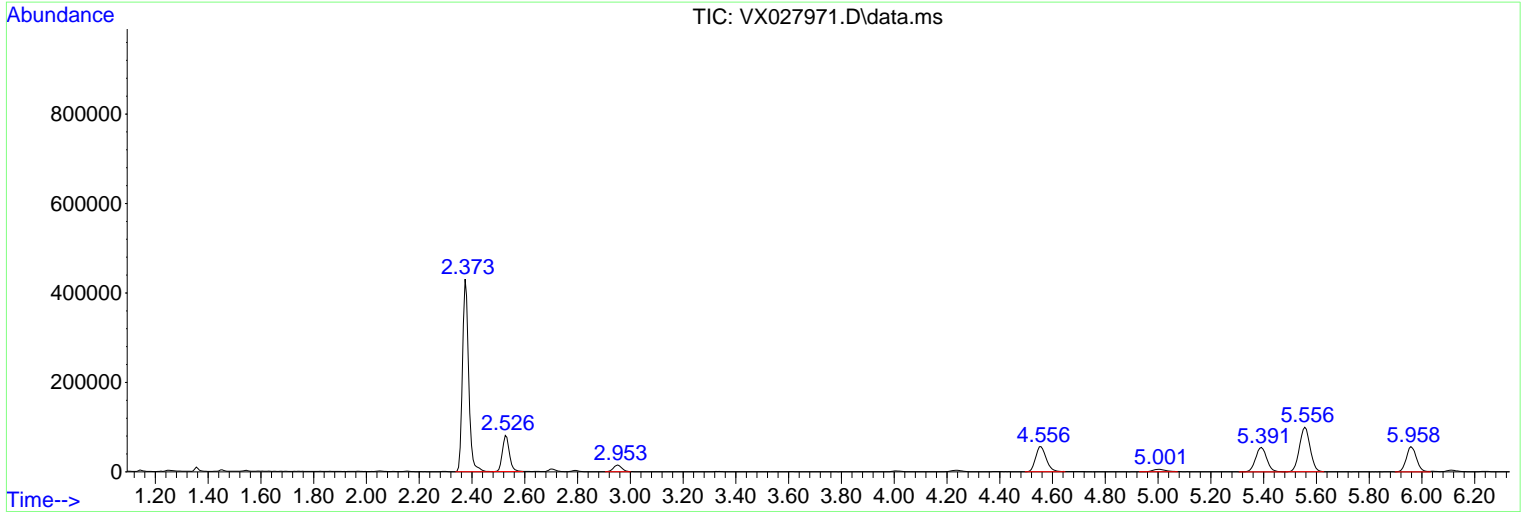
Sum of corrected areas: 16130081

Data Path : Z:\voasrv\HPCHEM1\MSVOA_X\Data\VX040422\
 Data File : VX027971.D
 Acq On : 04 Apr 2022 20:27
 Operator : JC/MD
 Sample : N2253-06
 Misc : 5.0mL/MSVOA_X/WATER
 ALS Vial : 26 Sample Multiplier: 1

Instrument :
 MSVOA_X
 ClientSampleId :
 2822S

Quant Method : Z:\voasrv\HPCHEM1\MSVOA_X\Method\82X032922W.M
 Quant Title : SW846 8260

TIC Library : C:\Database\NIST20.L
 TIC Integration Parameters: LSCINT.P



Data Path : Z:\voasrv\HPCHEM1\MSVOA_X\Data\VX040422\
 Data File : VX027971.D
 Acq On : 04 Apr 2022 20:27
 Operator : JC/MD
 Sample : N2253-06
 Misc : 5.0mL/MSVOA_X/WATER
 ALS Vial : 26 Sample Multiplier: 1

Instrument :
 MSVOA_X
 ClientSampleId :
 2822S

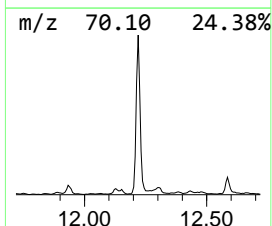
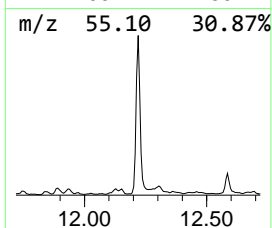
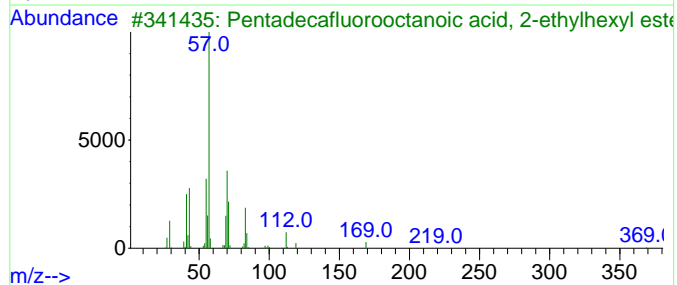
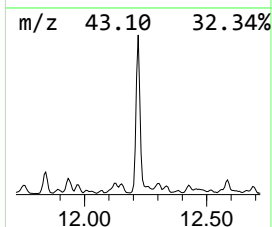
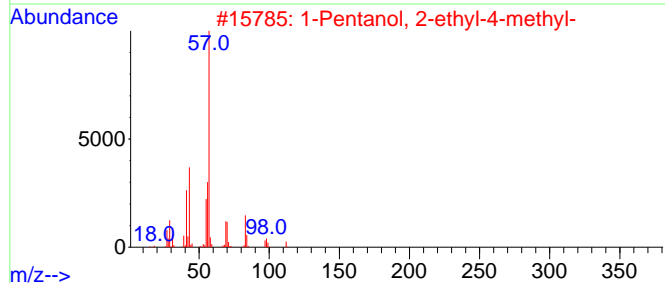
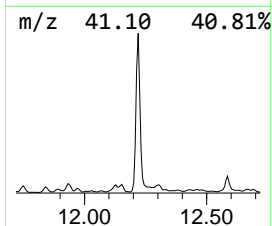
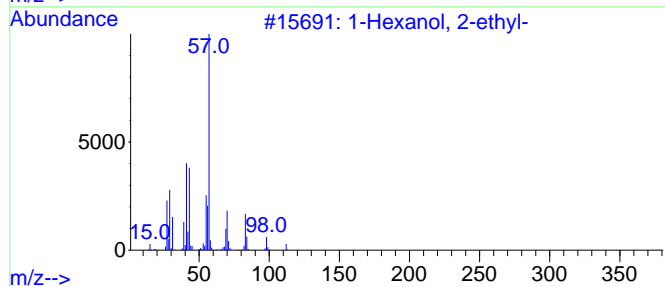
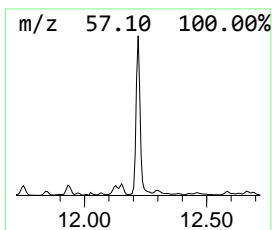
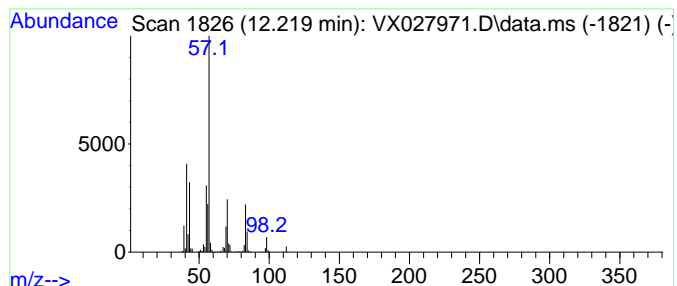
Quant Method : Z:\voasrv\HPCHEM1\MSVOA_X\Method\82X032922W.M
 Quant Title : SW846 8260

TIC Library : C:\Database\NIST20.L
 TIC Integration Parameters: LSCINT.P

 Peak Number 1 1-Hexanol, 2-ethyl- Concentration Rank 2

R.T.	EstConc	Area	Relative to ISTD	R.T.
12.219	151.26 ug/l	1176580	1,4-Dichlorobenzene-d4	12.024

Hit#	of 5	Tentative ID	MW	MolForm	CAS#	Qual
1		1-Hexanol, 2-ethyl-	130	C8H18O	000104-76-7	83
2		1-Pentanol, 2-ethyl-4-methyl-	130	C8H18O	000106-67-2	56
3		Pentadecafluorooctanoic acid, 2-...	526	C16H17F15O2	1000406-80-9	53
4		2-Ethyl-1-hexanol, methyl ether	144	C9H20O	1000365-10-2	50
5		Heptane, 1,1'-oxybis-	214	C14H30O	000629-64-1	50



Data Path : Z:\voasrv\HPCHEM1\MSVOA_X\Data\VX040422\
 Data File : VX027971.D
 Acq On : 04 Apr 2022 20:27
 Operator : JC/MD
 Sample : N2253-06
 Misc : 5.0mL/MSVOA_X/WATER
 ALS Vial : 26 Sample Multiplier: 1

Instrument :
 MSVOA_X
 ClientSampleId :
 2822S

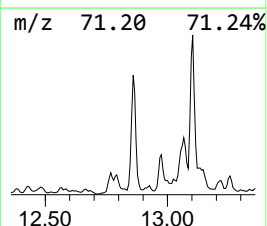
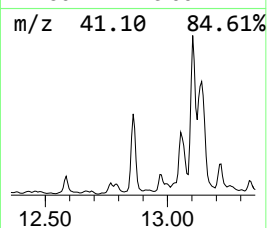
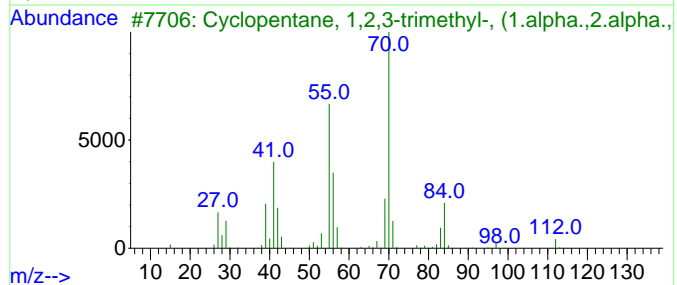
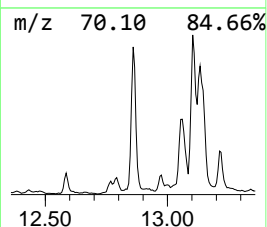
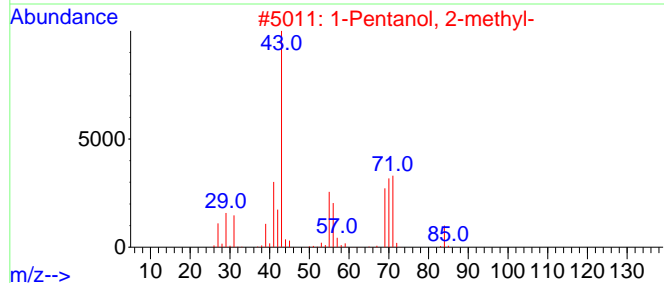
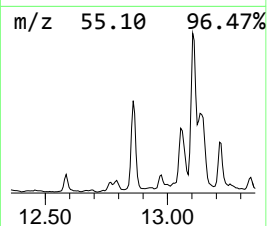
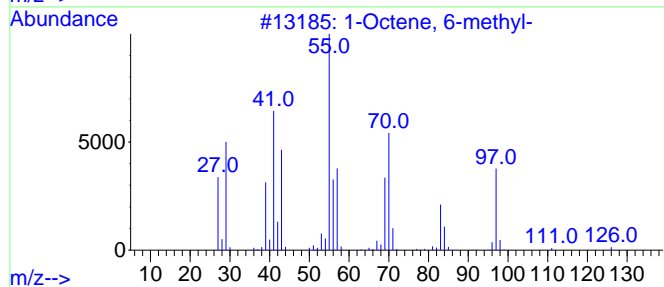
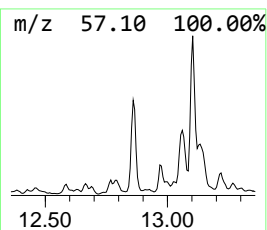
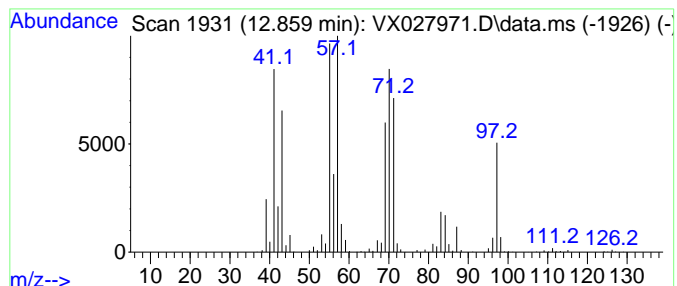
Quant Method : Z:\voasrv\HPCHEM1\MSVOA_X\Method\82X032922W.M
 Quant Title : SW846 8260

TIC Library : C:\Database\NIST20.L
 TIC Integration Parameters: LSCINT.P

 Peak Number 2 1-Octene, 6-methyl- Concentration Rank 6

R.T.	EstConc	Area	Relative to ISTD	R.T.
12.859	78.19 ug/l	608177	1,4-Dichlorobenzene-d4	12.024

Hit#	of 5	Tentative ID	MW	MolForm	CAS#	Qual
1		1-Octene, 6-methyl-	126	C9H18	013151-10-5	70
2		1-Pentanol, 2-methyl-	102	C6H14O	000105-30-6	53
3		Cyclopentane, 1,2,3-trimethyl-, ...	112	C8H16	002613-69-6	50
4		1-Butanol, 2-ethyl-	102	C6H14O	000097-95-0	47
5		Hexane, 3,3,4-trimethyl-	128	C9H20	016747-31-2	43



Data Path : Z:\voasrv\HPCHEM1\MSVOA_X\Data\VX040422\
 Data File : VX027971.D
 Acq On : 04 Apr 2022 20:27
 Operator : JC/MD
 Sample : N2253-06
 Misc : 5.0mL/MSVOA_X/WATER
 ALS Vial : 26 Sample Multiplier: 1

Instrument :
 MSVOA_X
 ClientSampleId :
 2822S

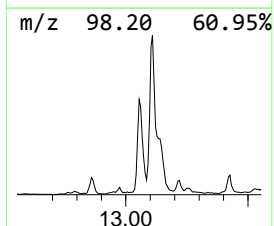
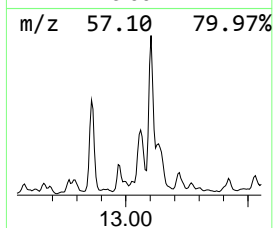
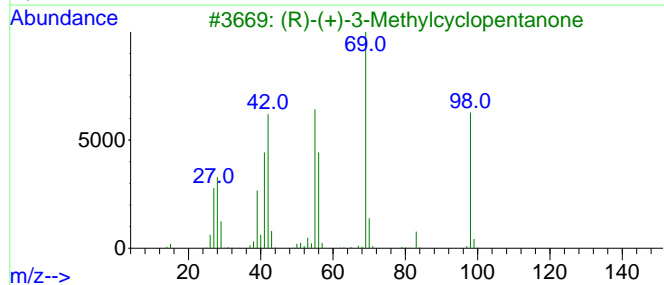
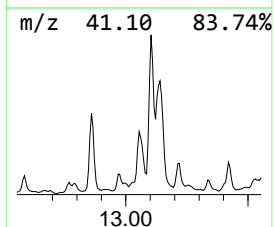
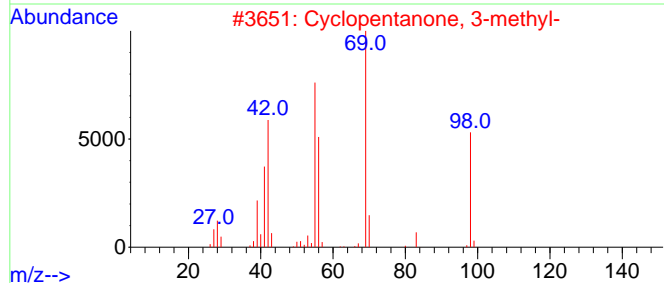
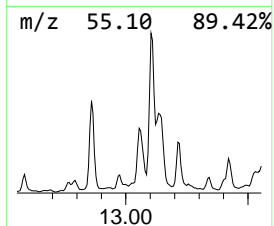
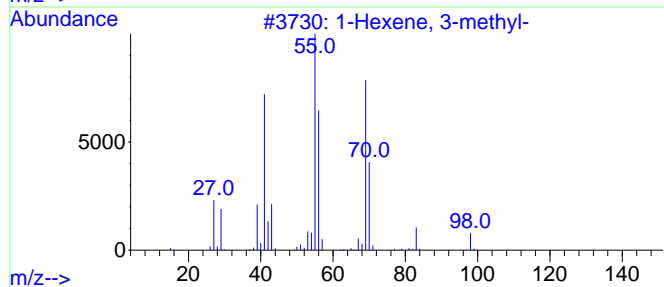
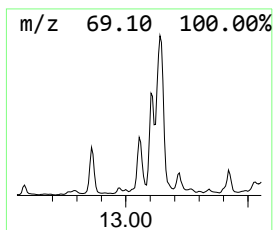
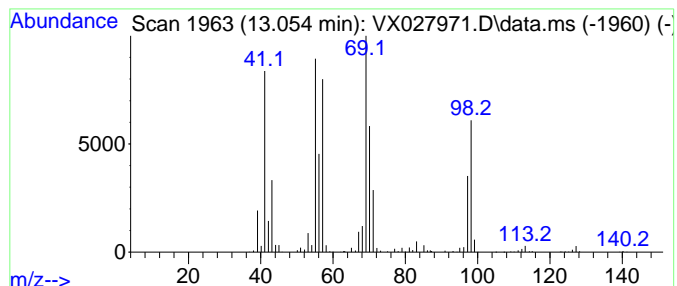
Quant Method : Z:\voasrv\HPCHEM1\MSVOA_X\Method\82X032922W.M
 Quant Title : SW846 8260

TIC Library : C:\Database\NIST20.L
 TIC Integration Parameters: LSCINT.P

 Peak Number 3 1-Hexene, 3-methyl- Concentration Rank 7

R.T.	EstConc	Area	Relative to ISTD	R.T.
13.055	78.04 ug/l	607019	1,4-Dichlorobenzene-d4	12.024

Hit#	of 5	Tentative ID	MW	MolForm	CAS#	Qual
1		1-Hexene, 3-methyl-	98	C7H14	003404-61-3	53
2		Cyclopentanone, 3-methyl-	98	C6H10O	001757-42-2	52
3		(R)-(+)-3-Methylcyclopentanone	98	C6H10O	006672-30-6	52
4		Allylhydrazone acetaldehyde	98	C5H10N2	1010423-20-0	50
5		2-Pentene, 3-ethyl-	98	C7H14	000816-79-5	47



Data Path : Z:\voasrv\HPCHEM1\MSVOA_X\Data\VX040422\
 Data File : VX027971.D
 Acq On : 04 Apr 2022 20:27
 Operator : JC/MD
 Sample : N2253-06
 Misc : 5.0mL/MSVOA_X/WATER
 ALS Vial : 26 Sample Multiplier: 1

Instrument :
 MSVOA_X
 ClientSampleId :
 2822S

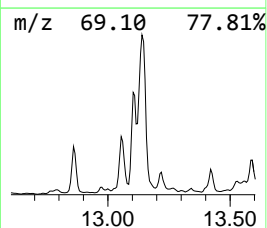
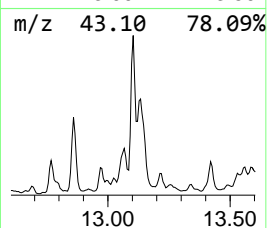
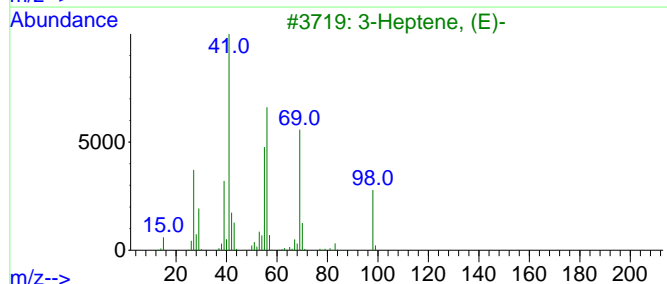
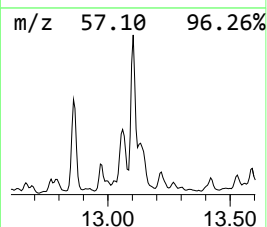
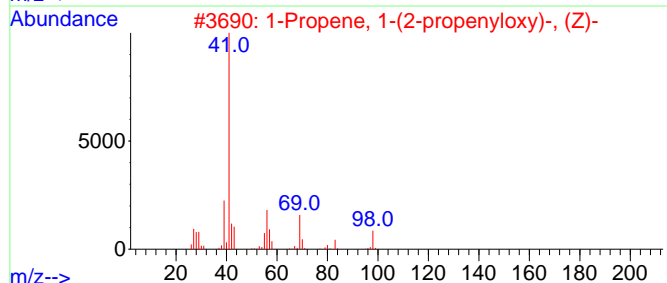
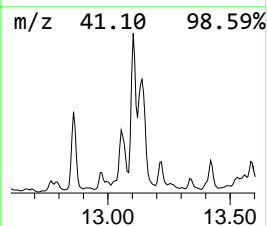
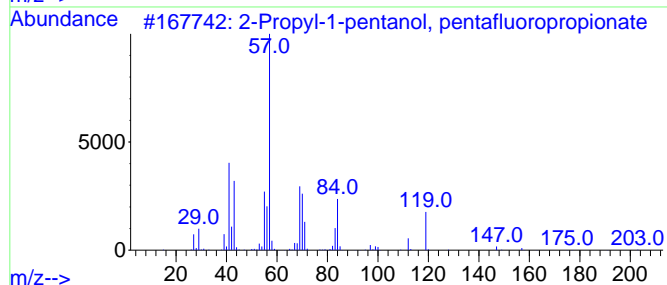
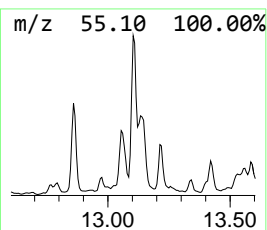
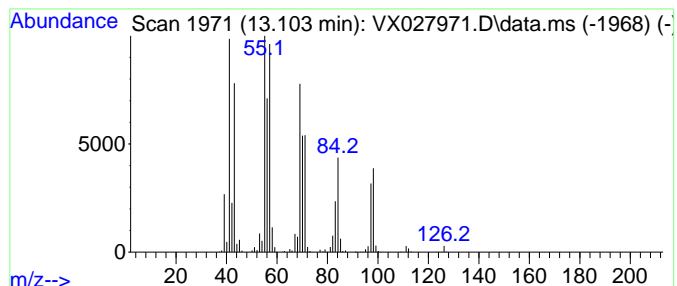
Quant Method : Z:\voasrv\HPCHEM1\MSVOA_X\Method\82X032922W.M
 Quant Title : SW846 8260

TIC Library : C:\Database\NIST20.L
 TIC Integration Parameters: LSCINT.P

 Peak Number 4 2-Propyl-1-pentanol, pentafluoro... Concentration Rank 1

R.T.	EstConc	Area	Relative to ISTD	R.T.
13.103	161.63 ug/l	1257220	1,4-Dichlorobenzene-d4	12.024

Hit#	of 5	Tentative ID	MW	MolForm	CAS#	Qual
1		2-Propyl-1-pentanol, pentafluoro...	276	C11H17F5O2	1000365-51-2	50
2		1-Propene, 1-(2-propenyloxy)-, (Z)-	98	C6H10O	061142-12-9	46
3		3-Heptene, (E)-	98	C7H14	014686-14-7	43
4		Cyclopropane, 1,1,2,3-tetramethyl-	98	C7H14	074752-93-5	30
5		2-Pentene, 3-methyl-, (Z)-	84	C6H12	000922-62-3	30



Data Path : Z:\voasrv\HPCHEM1\MSVOA_X\Data\VX040422\
 Data File : VX027971.D
 Acq On : 04 Apr 2022 20:27
 Operator : JC/MD
 Sample : N2253-06
 Misc : 5.0mL/MSVOA_X/WATER
 ALS Vial : 26 Sample Multiplier: 1

Instrument :
 MSVOA_X
 ClientSampleId :
 2822S

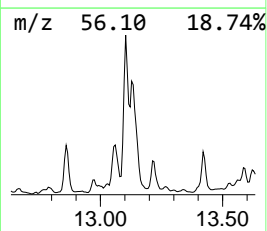
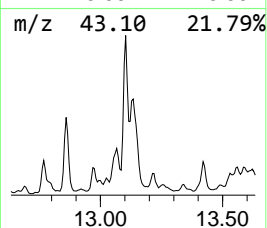
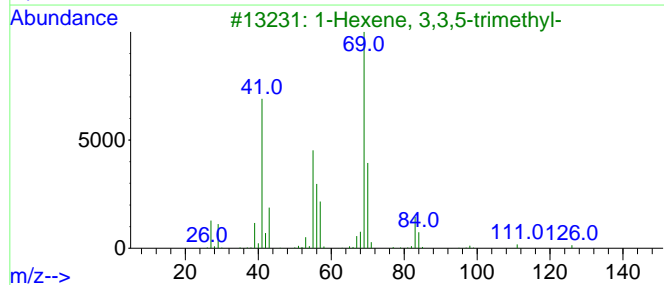
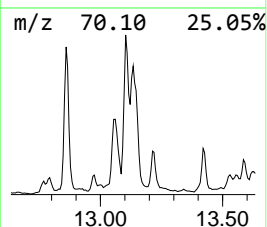
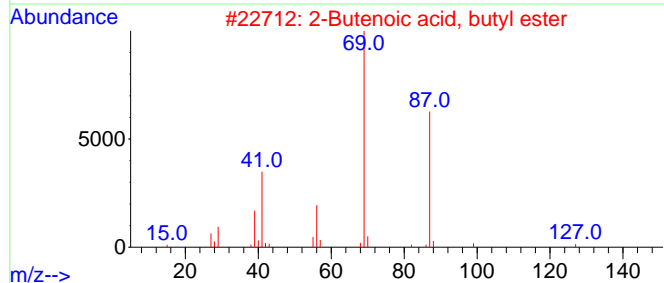
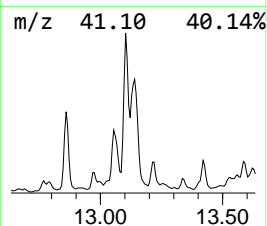
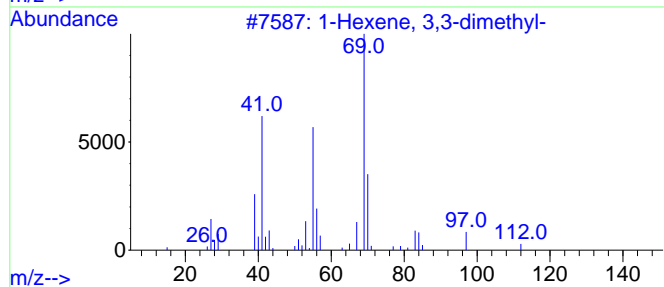
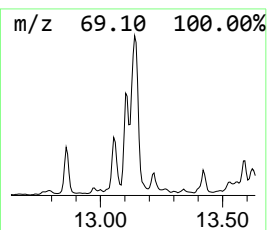
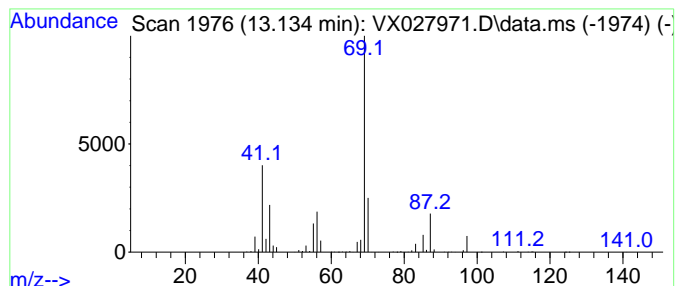
Quant Method : Z:\voasrv\HPCHEM1\MSVOA_X\Method\82X032922W.M
 Quant Title : SW846 8260

TIC Library : C:\Database\NIST20.L
 TIC Integration Parameters: LSCINT.P

 Peak Number 5 1-Hexene, 3,3-dimethyl- Concentration Rank 3

R.T.	EstConc	Area	Relative to ISTD	R.T.
13.134	135.63 ug/l	1054980	1,4-Dichlorobenzene-d4	12.024

Hit#	of	5	Tentative ID	MW	MolForm	CAS#	Qual
1			1-Hexene, 3,3-dimethyl-	112	C8H16	003404-77-1	39
2			2-Butenoic acid, butyl ester	142	C8H14O2	007299-91-4	33
3			1-Hexene, 3,3,5-trimethyl-	126	C9H18	013427-43-5	9
4			Cyclopropanecarboxylic acid, 2-m...	170	C10H18O2	1000354-65-8	9
5			2-Propenoic acid, 2-methyl-, hex...	170	C10H18O2	000142-09-6	9



Data Path : Z:\voasrv\HPCHEM1\MSVOA_X\Data\VX040422\
 Data File : VX027971.D
 Acq On : 04 Apr 2022 20:27
 Operator : JC/MD
 Sample : N2253-06
 Misc : 5.0mL/MSVOA_X/WATER
 ALS Vial : 26 Sample Multiplier: 1

Instrument :
 MSVOA_X
 ClientSampleId :
 2822S

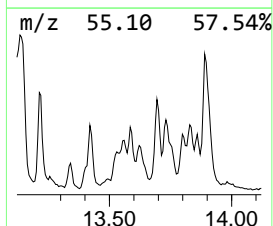
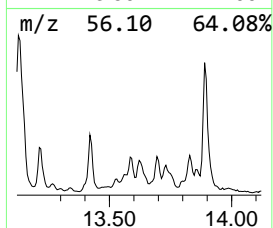
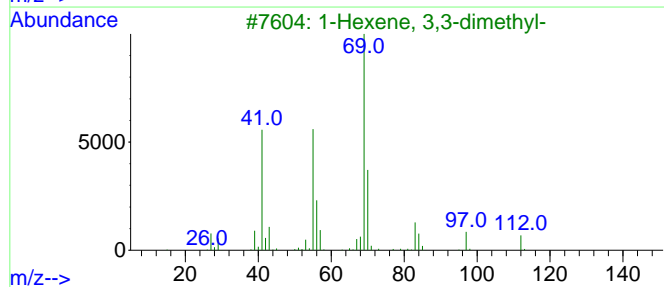
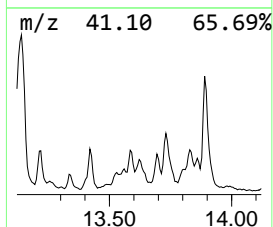
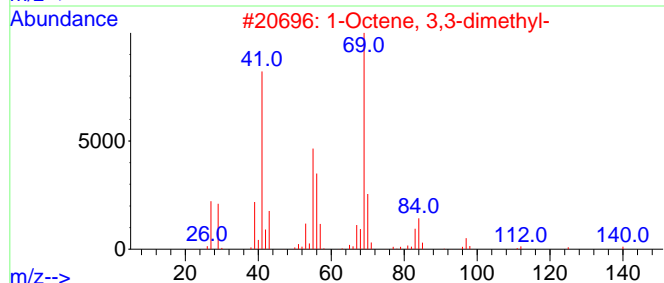
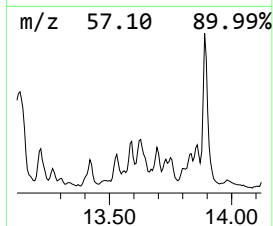
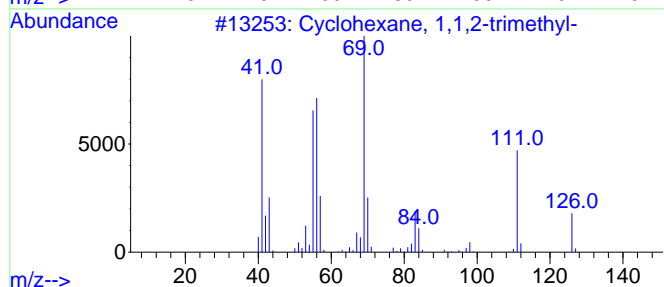
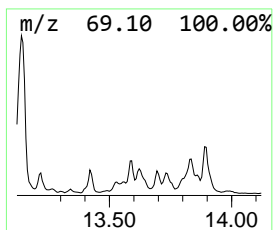
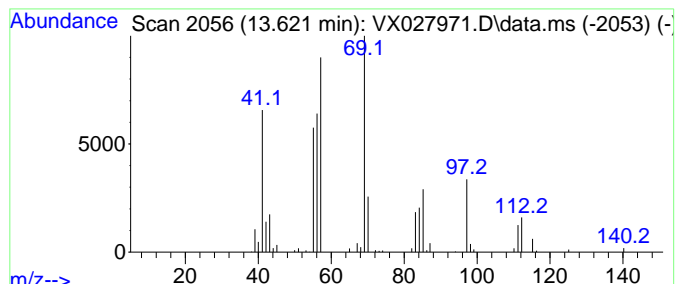
Quant Method : Z:\voasrv\HPCHEM1\MSVOA_X\Method\82X032922W.M
 Quant Title : SW846 8260

TIC Library : C:\Database\NIST20.L
 TIC Integration Parameters: LSCINT.P

 Peak Number 6 Cyclohexane, 1,1,2-trimethyl- Concentration Rank 9

R.T.	EstConc	Area	Relative to ISTD	R.T.
13.621	40.07 ug/l	311659	1,4-Dichlorobenzene-d4	12.024

Hit#	of	Tentative ID	MW	MolForm	CAS#	Qual
1	5	Cyclohexane, 1,1,2-trimethyl-	126	C9H18	007094-26-0	50
2		1-Octene, 3,3-dimethyl-	140	C10H20	074511-51-6	47
3		1-Hexene, 3,3-dimethyl-	112	C8H16	003404-77-1	46
4		Cyclopentane, 1,1,2-trimethyl-	112	C8H16	004259-00-1	38
5		Cyclohexane, 1,1,4,4-tetramethyl-	140	C10H20	002223-52-1	38



Data Path : Z:\voasrv\HPCHEM1\MSVOA_X\Data\VX040422\
 Data File : VX027971.D
 Acq On : 04 Apr 2022 20:27
 Operator : JC/MD
 Sample : N2253-06
 Misc : 5.0mL/MSVOA_X/WATER
 ALS Vial : 26 Sample Multiplier: 1

Instrument :
 MSVOA_X
 ClientSampleId :
 2822S

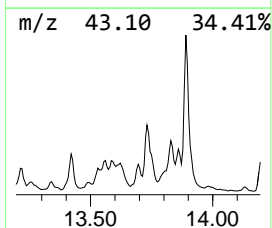
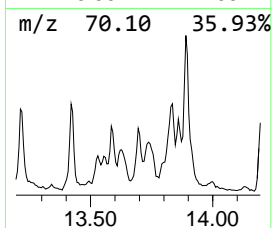
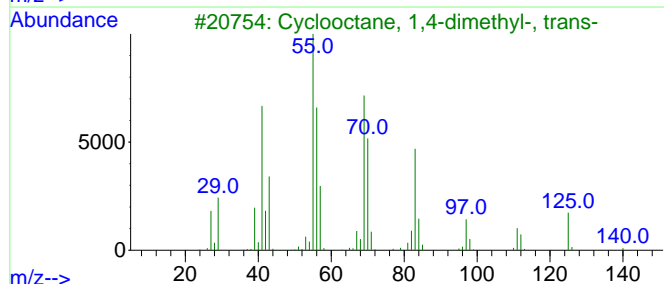
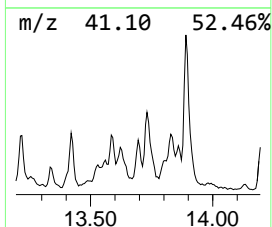
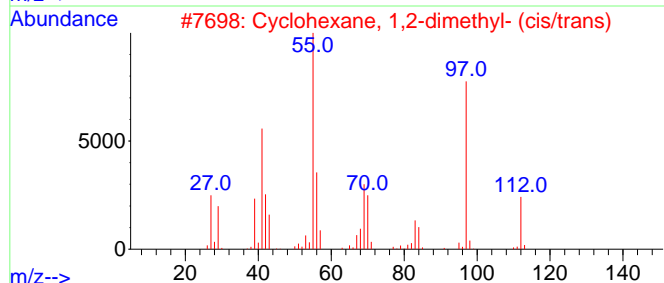
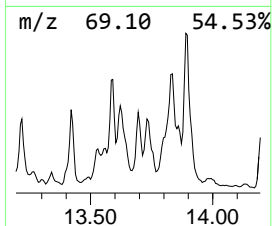
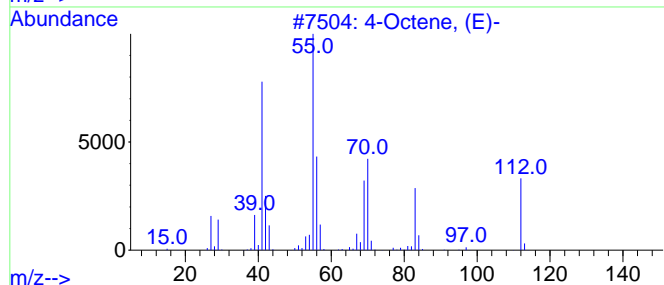
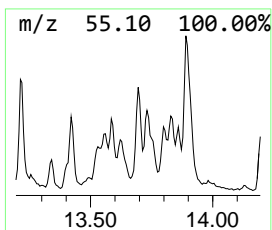
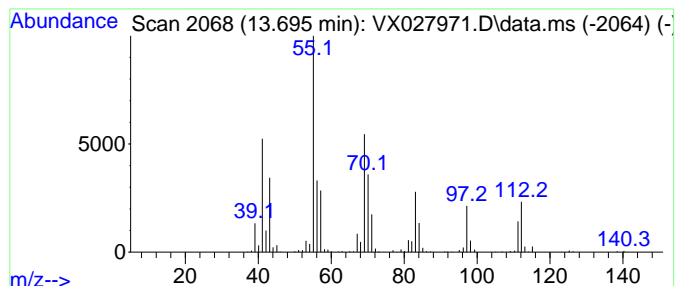
Quant Method : Z:\voasrv\HPCHEM1\MSVOA_X\Method\82X032922W.M
 Quant Title : SW846 8260

TIC Library : C:\Database\NIST20.L
 TIC Integration Parameters: LSCINT.P

 Peak Number 7 4-Octene, (E)- Concentration Rank 10

R.T.	EstConc	Area	Relative to ISTD	R.T.
13.695	34.66 ug/l	269605	1,4-Dichlorobenzene-d4	12.024

Hit#	of 5	Tentative ID	MW	MolForm	CAS#	Qual
1		4-Octene, (E)-	112	C8H16	014850-23-8	58
2		Cyclohexane, 1,2-dimethyl- (cis/...	112	C8H16	000583-57-3	53
3		Cyclooctane, 1,4-dimethyl-, trans-	140	C10H20	013151-98-9	52
4		Cyclooctane, 1,4-dimethyl-, cis-	140	C10H20	013151-99-0	52
5		n-Tridecan-1-ol	200	C13H28O	000112-70-9	50



Data Path : Z:\voasrv\HPCHEM1\MSVOA_X\Data\VX040422\
 Data File : VX027971.D
 Acq On : 04 Apr 2022 20:27
 Operator : JC/MD
 Sample : N2253-06
 Misc : 5.0mL/MSVOA_X/WATER
 ALS Vial : 26 Sample Multiplier: 1

Instrument :
 MSVOA_X
 ClientSampleId :
 2822S

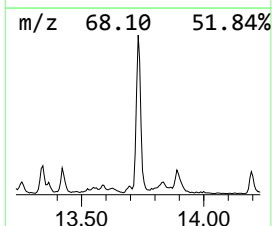
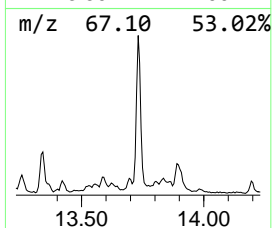
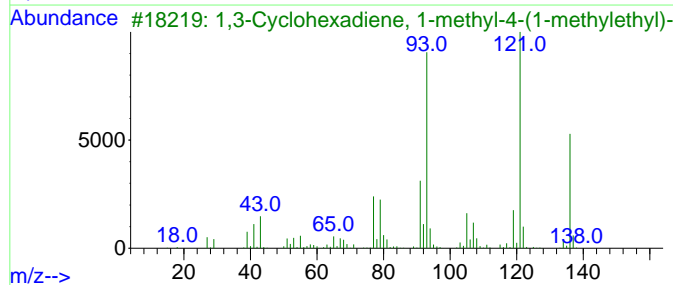
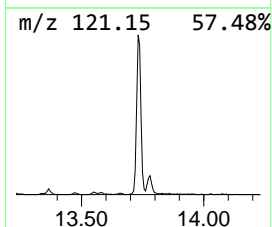
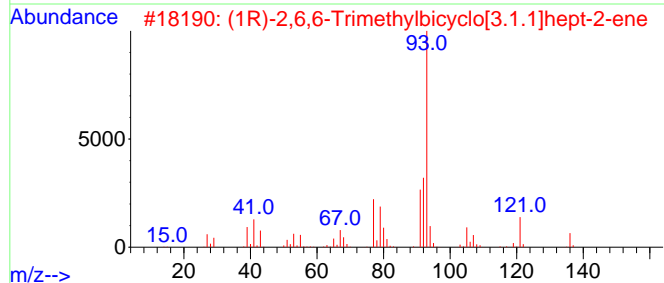
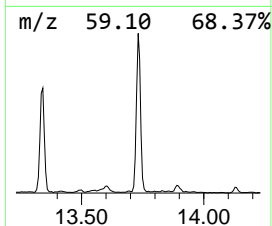
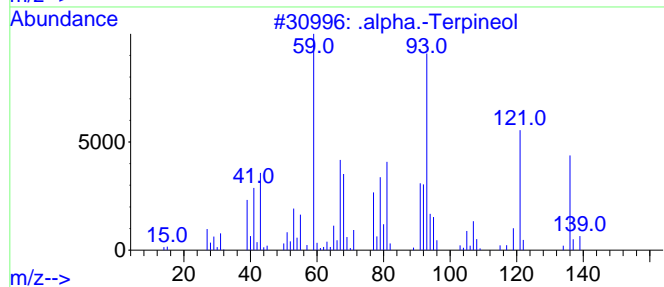
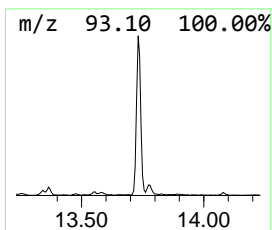
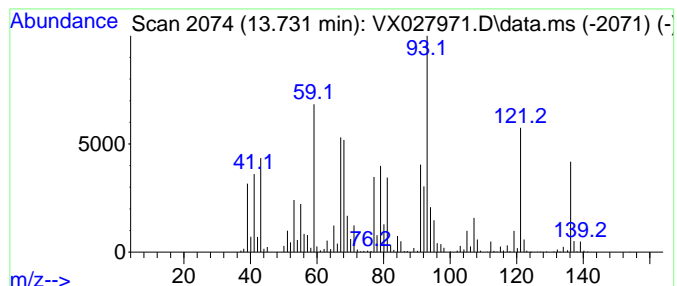
Quant Method : Z:\voasrv\HPCHEM1\MSVOA_X\Method\82X032922W.M
 Quant Title : SW846 8260

TIC Library : C:\Database\NIST20.L
 TIC Integration Parameters: LSCINT.P

 Peak Number 8 .alpha.-Terpineol Concentration Rank 4

R.T.	EstConc	Area	Relative to ISTD	R.T.
13.731	114.43 ug/l	890089	1,4-Dichlorobenzene-d4	12.024

Hit#	of 5	Tentative ID	MW	MolForm	CAS#	Qual
1		.alpha.-Terpineol	154	C10H18O	000098-55-5	74
2		(1R)-2,6,6-Trimethylbicyclo[3.1....	136	C10H16	007785-70-8	55
3		1,3-Cyclohexadiene, 1-methyl-4-(...)	136	C10H16	000099-86-5	55
4		Cyclohexene, 1-methyl-4-(1-methy...	136	C10H16	000586-62-9	55
5		.gamma.-Terpinene	136	C10H16	000099-85-4	50



Data Path : Z:\voasrv\HPCHEM1\MSVOA_X\Data\VX040422\
 Data File : VX027971.D
 Acq On : 04 Apr 2022 20:27
 Operator : JC/MD
 Sample : N2253-06
 Misc : 5.0mL/MSVOA_X/WATER
 ALS Vial : 26 Sample Multiplier: 1

Instrument :
 MSVOA_X
 ClientSampleId :
 2822S

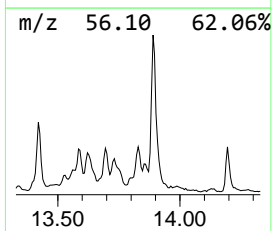
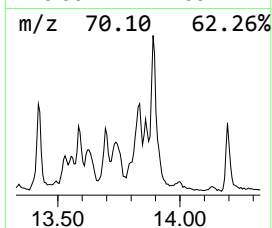
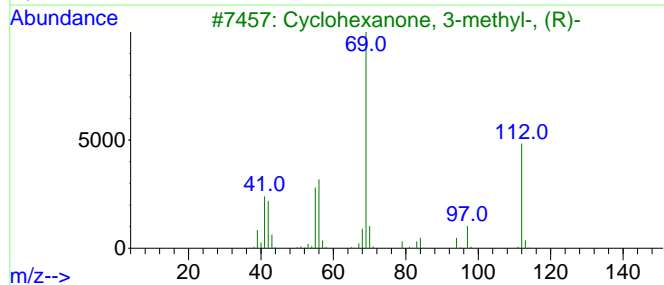
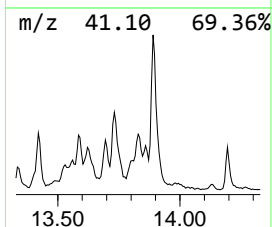
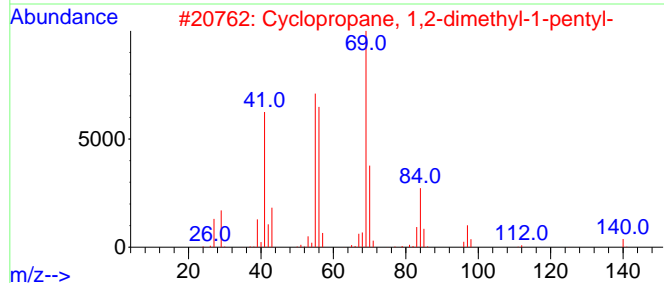
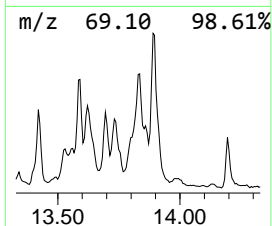
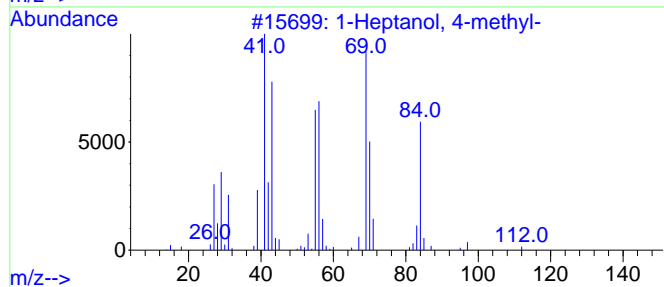
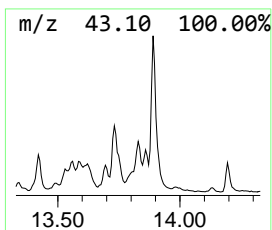
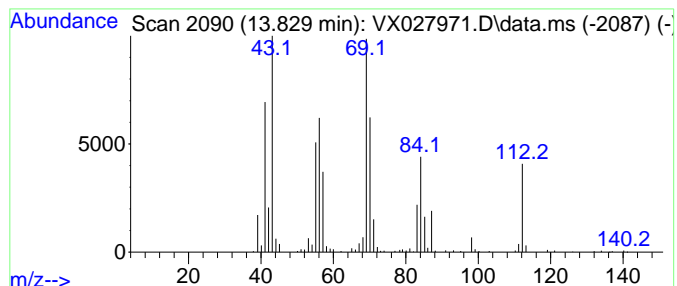
Quant Method : Z:\voasrv\HPCHEM1\MSVOA_X\Method\82X032922W.M
 Quant Title : SW846 8260

TIC Library : C:\Database\NIST20.L
 TIC Integration Parameters: LSCINT.P

 Peak Number 9 1-Heptanol, 4-methyl- Concentration Rank 8

R.T.	EstConc	Area	Relative to ISTD	R.T.
13.829	41.51 ug/l	322882	1,4-Dichlorobenzene-d4	12.024

Hit#	of	5	Tentative ID	MW	MolForm	CAS#	Qual
1			1-Heptanol, 4-methyl-	130	C8H18O	000817-91-4	53
2			Cyclopropane, 1,2-dimethyl-1-pen...	140	C10H20	062238-04-4	50
3			Cyclohexanone, 3-methyl-, (R)-	112	C7H12O	013368-65-5	43
4			3-Octene, (Z)-	112	C8H16	014850-22-7	38
5			3-Octene, (E)-	112	C8H16	014919-01-8	38



Data Path : Z:\voasrv\HPCHEM1\MSVOA_X\Data\VX040422\
 Data File : VX027971.D
 Acq On : 04 Apr 2022 20:27
 Operator : JC/MD
 Sample : N2253-06
 Misc : 5.0mL/MSVOA_X/WATER
 ALS Vial : 26 Sample Multiplier: 1

Instrument :
 MSVOA_X
 ClientSampleId :
 2822S

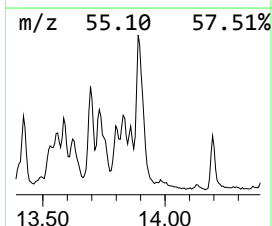
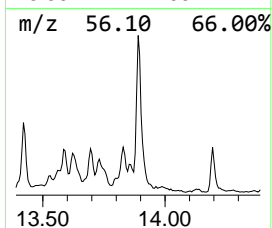
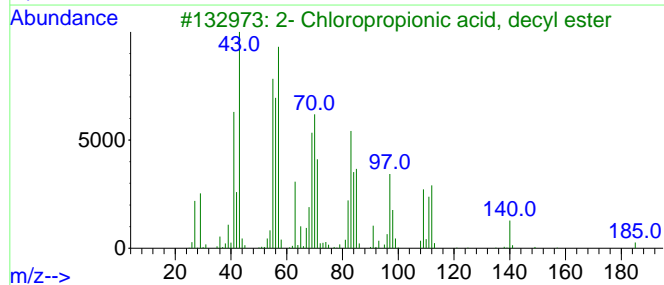
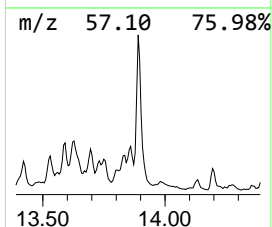
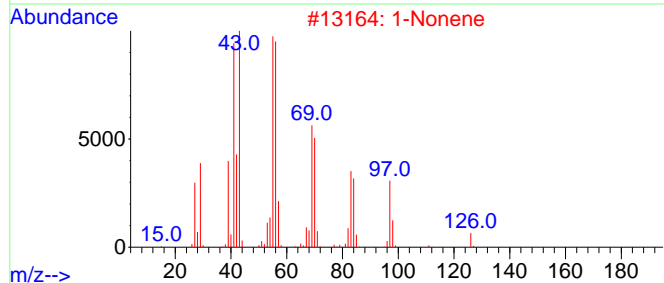
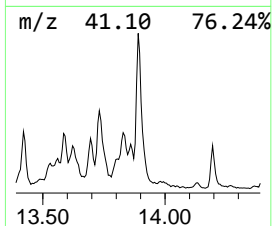
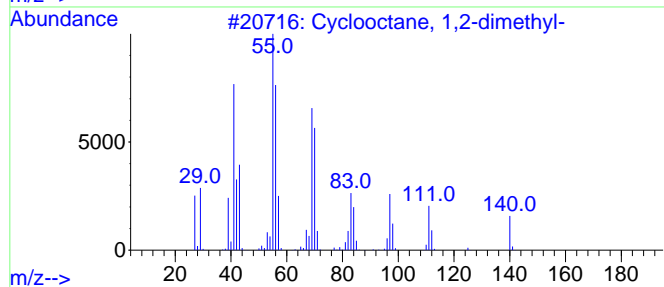
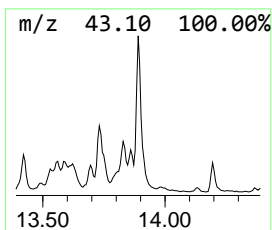
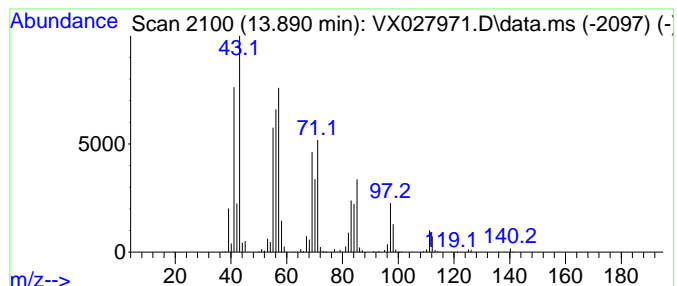
Quant Method : Z:\voasrv\HPCHEM1\MSVOA_X\Method\82X032922W.M
 Quant Title : SW846 8260

TIC Library : C:\Database\NIST20.L
 TIC Integration Parameters: LSCINT.P

 Peak Number 10 Cyclooctane, 1,2-dimethyl- Concentration Rank 5

R.T.	EstConc	Area	Relative to ISTD	R.T.
13.890	110.89 ug/l	862547	1,4-Dichlorobenzene-d4	12.024

Hit#	of 5	Tentative ID	MW	MolForm	CAS#	Qual
1		Cyclooctane, 1,2-dimethyl-	140	C10H20	013151-94-5	53
2		1-Nonene	126	C9H18	000124-11-8	49
3		2- Chloropropionic acid, decyl e...	248	C13H25ClO2	086711-78-6	47
4		Cyclopropane, octyl-	154	C11H22	001472-09-9	43
5		Acetic acid, decyl ester	200	C12H24O2	000112-17-4	35



Data Path : Z:\voasrv\HPCHEM1\MSVOA_X\Data\VX040422\
Data File : VX027971.D
Acq On : 04 Apr 2022 20:27
Operator : JC/MD
Sample : N2253-06
Misc : 5.0mL/MSVOA_X/WATER
ALS Vial : 26 Sample Multiplier: 1

Instrument :
MSVOA_X
ClientSampleId :
2822S

Quant Method : Z:\voasrv\HPCHEM1\MSVOA_X\Method\82X032922W.M
Quant Title : SW846 8260

TIC Library : C:\Database\NIST20.L
TIC Integration Parameters: LSCINT.P

TIC Top Hit name	RT	EstConc	Units	Response	--Internal Standard--			
					#	RT	Resp	Conc
1-Hexanol, 2-et...	12.219	151.3	ug/l	1176580	4	12.024	388924	50.0
1-Octene, 6-met...	12.859	78.2	ug/l	608177	4	12.024	388924	50.0
1-Hexene, 3-met...	13.055	78.0	ug/l	607019	4	12.024	388924	50.0
2-Propyl-1-pent...	13.103	161.6	ug/l	1257220	4	12.024	388924	50.0
1-Hexene, 3,3-d...	13.134	135.6	ug/l	1054980	4	12.024	388924	50.0
Cyclohexane, 1,...	13.621	40.1	ug/l	311659	4	12.024	388924	50.0
4-Octene, (E)-	13.695	34.7	ug/l	269605	4	12.024	388924	50.0
.alpha.-Terpineol	13.731	114.4	ug/l	890089	4	12.024	388924	50.0
1-Heptanol, 4-m...	13.829	41.5	ug/l	322882	4	12.024	388924	50.0
Cyclooctane, 1,...	13.890	110.9	ug/l	862547	4	12.024	388924	50.0