

Data Path : Z:\voasrv\HPCHEM1\MSVOA_X\Data\VX040425\
 Data File : VX045605.D
 Acq On : 04 Apr 2025 17:29
 Operator : JC/MD
 Sample : PB167448ZHE#04
 Misc : 5.0mL/MSVOA_X/WATER
 ALS Vial : 21 Sample Multiplier: 1

Instrument :
 MSVOA_X
 ClientSampleId :
 PB167448ZHE#04

Quant Time: Apr 04 23:13:49 2025
 Quant Method : Z:\voasrv\HPCHEM1\MSVOA_X\Method\82X040225W.M
 Quant Title : SW846 8260
 QLast Update : Wed Apr 02 03:11:43 2025
 Response via : Initial Calibration

Compound	R.T.	QIon	Response	Conc	Units	Dev(Min)

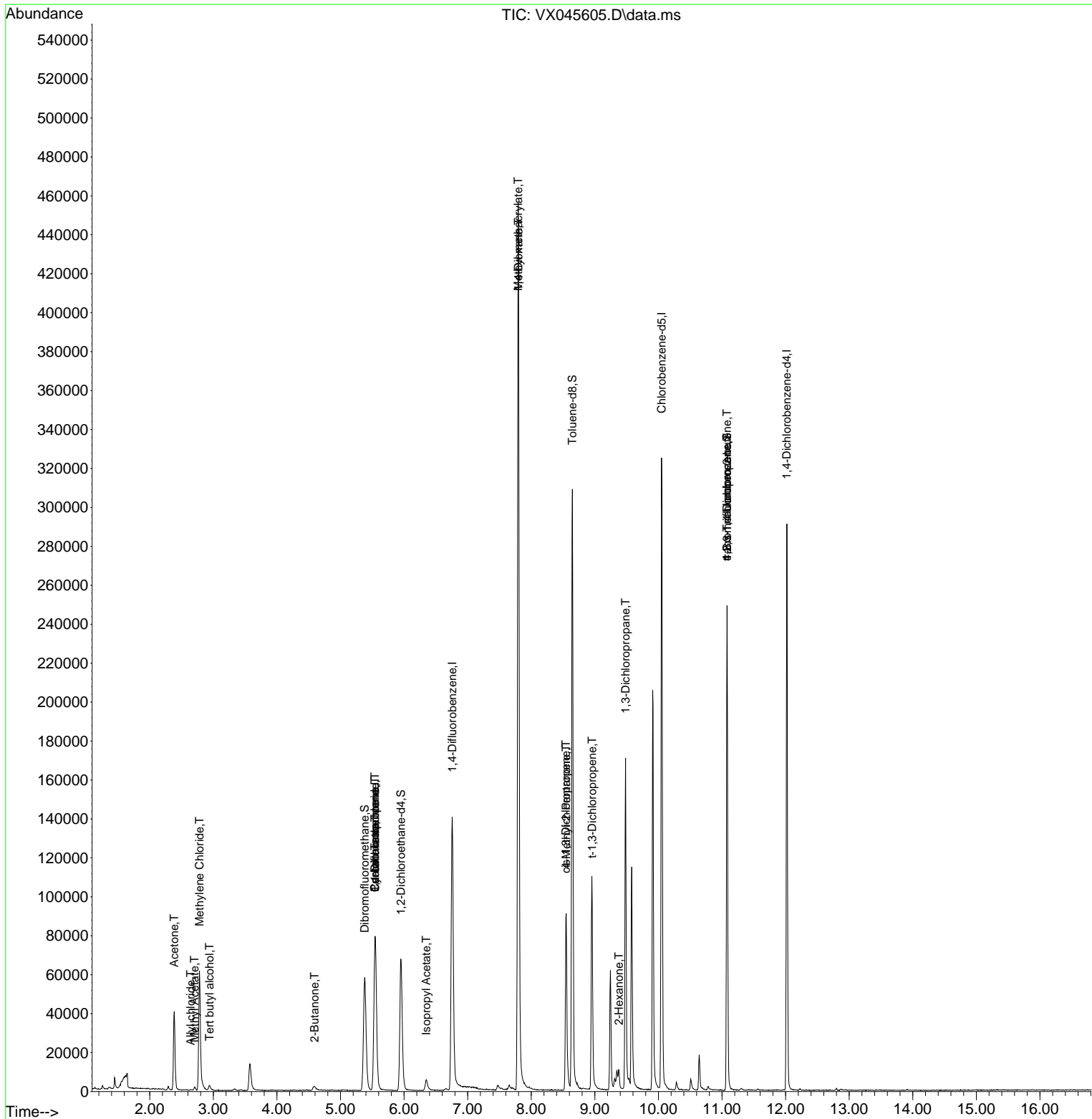
Internal Standards						
1) Pentafluorobenzene	5.544	168	68787	50.000	ug/l	0.00
34) 1,4-Difluorobenzene	6.757	114	135303	50.000	ug/l	0.00
63) Chlorobenzene-d5	10.049	117	130586	50.000	ug/l	0.00
72) 1,4-Dichlorobenzene-d4	12.018	152	52425	50.000	ug/l	0.00
System Monitoring Compounds						
33) 1,2-Dichloroethane-d4	5.952	65	68812	54.702	ug/l	0.00
Spiked Amount	50.000	Range 74 - 125	Recovery	=	109.400%	
35) Dibromofluoromethane	5.379	113	49624	51.693	ug/l	0.00
Spiked Amount	50.000	Range 75 - 124	Recovery	=	103.380%	
50) Toluene-d8	8.647	98	174614	52.113	ug/l	0.00
Spiked Amount	50.000	Range 86 - 113	Recovery	=	104.220%	
62) 4-Bromofluorobenzene	11.079	95	64159	52.568	ug/l	0.00
Spiked Amount	50.000	Range 77 - 121	Recovery	=	105.140%	
Target Compounds						
						Qvalue
11) Tert butyl alcohol	2.941	59	1996	11.807	ug/l #	72
14) Allyl chloride	2.642	41	328	0.209	ug/l #	51
16) Acetone	2.386	43	45908	88.875	ug/l	97
18) Methyl Acetate	2.703	43	2417	2.032	ug/l	92
20) Methylene Chloride	2.782	84	28428	29.397	ug/l	98
25) 2-Butanone	4.593	43	4497	5.948	ug/l	97
31) Cyclohexane	5.544	56	2133	1.382	ug/l #	35
36) 1,1-Dichloropropene	5.544	75	6919	5.338	ug/l #	50
38) Carbon Tetrachloride	5.544	117	8118	5.795	ug/l #	16
43) Isopropyl Acetate	6.349	43	7539	3.045	ug/l	99
48) Methyl methacrylate	7.793	41	46106	36.070	ug/l #	51
49) 1,4-Dioxane	7.799	88	36	1.557	ug/l #	1
51) 4-Methyl-2-Pentanone	8.549	43	37330	22.746	ug/l #	53
53) t-1,3-Dichloropropene	8.958	75	124	2.370	ug/l #	43
54) cis-1,3-Dichloropropene	8.543	75	13965	9.814	ug/l #	69
57) 1,3-Dichloropropane	9.482	76	1476	0.888	ug/l #	42
59) 2-Hexanone	9.378	43	10279	8.458	ug/l #	28
76) 1,2,3-Trichloropropane	11.079	75	37717	29.495	ug/l #	37
81) trans-1,4-Dichloro-2-b...	11.079	75	37717	100.102	ug/l #	1

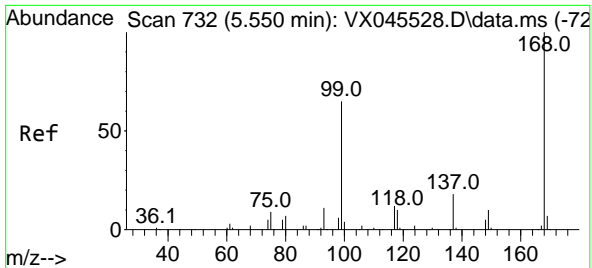
(#) = qualifier out of range (m) = manual integration (+) = signals summed

Data Path : Z:\voasrv\HPCHEM1\MSVOA_X\Data\VX040425\
 Data File : VX045605.D
 Acq On : 04 Apr 2025 17:29
 Operator : JC/MD
 Sample : PB167448ZHE#04
 Misc : 5.0mL/MSVOA_X/WATER
 ALS Vial : 21 Sample Multiplier: 1

Instrument :
 MSVOA_X
 ClientSampleId :
 PB167448ZHE#04

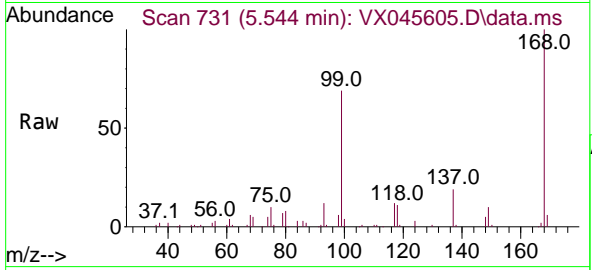
Quant Time: Apr 04 23:13:49 2025
 Quant Method : Z:\voasrv\HPCHEM1\MSVOA_X\Method\82X040225W.M
 Quant Title : SW846 8260
 QLast Update : Wed Apr 02 03:11:43 2025
 Response via : Initial Calibration



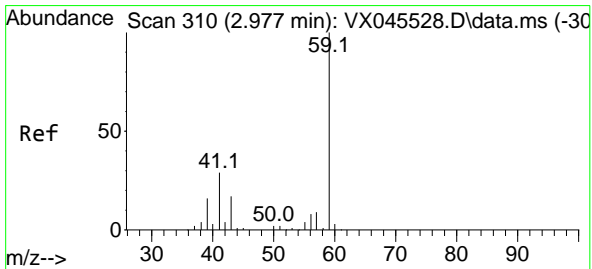
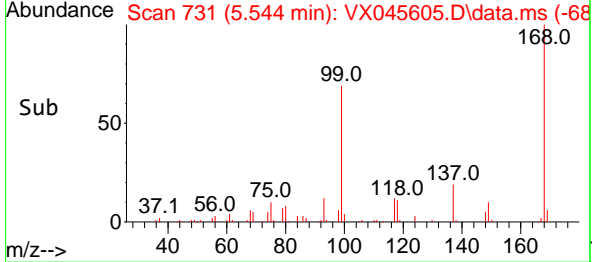
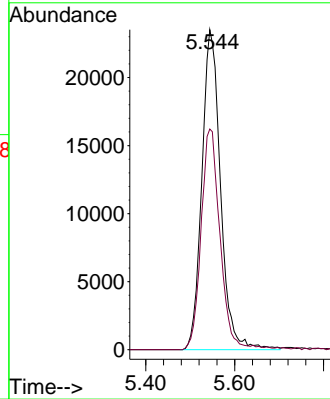


#1
 Pentafluorobenzene
 Concen: 50.000 ug/l
 RT: 5.544 min Scan# 71
 Delta R.T. -0.006 min
 Lab File: VX045605.D
 Acq: 04 Apr 2025 17:29

Instrument : MSVOA_X
 ClientSampleId : PB167448ZHE#04

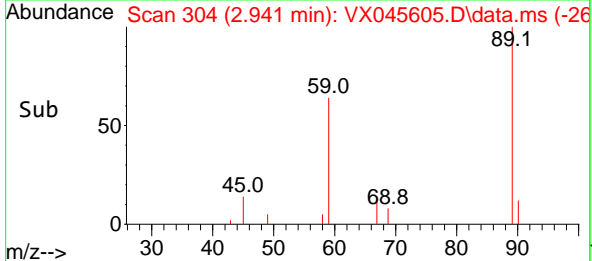
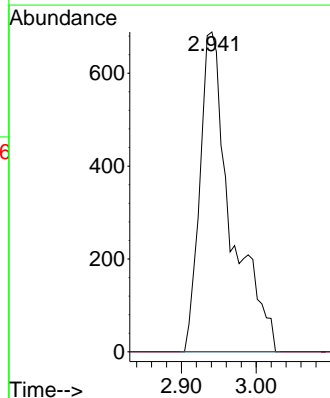
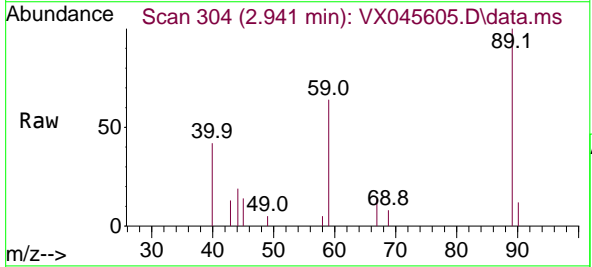


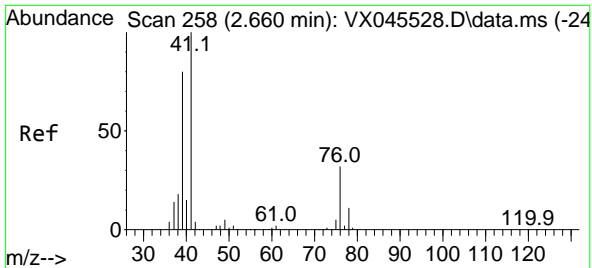
Tgt Ion:168 Resp: 68787
 Ion Ratio Lower Upper
 168 100
 99 68.9 52.3 78.5



#11
 Tert butyl alcohol
 Concen: 11.807 ug/l
 RT: 2.941 min Scan# 304
 Delta R.T. -0.036 min
 Lab File: VX045605.D
 Acq: 04 Apr 2025 17:29

Tgt Ion: 59 Resp: 1996
 Ion Ratio Lower Upper
 59 100
 57 0.0 8.6 12.8#



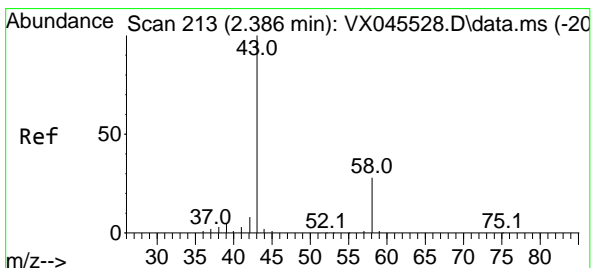
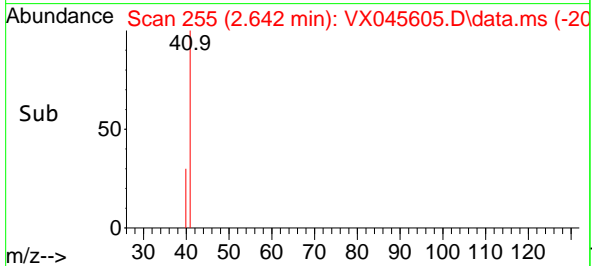
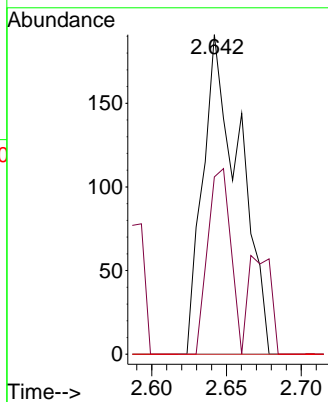
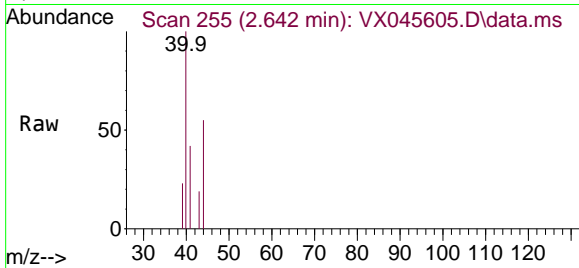


#14
 Allyl chloride
 Concen: 0.209 ug/l
 RT: 2.642 min Scan# 215
 Delta R.T. -0.018 min
 Lab File: VX045605.D
 Acq: 04 Apr 2025 17:29

Instrument : MSVOA_X
 ClientSampleId : PB167448ZHE#04

Tgt Ion: 41 Resp: 328

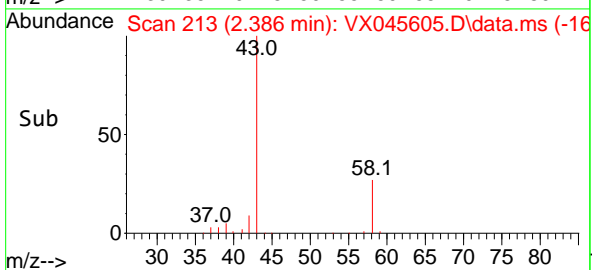
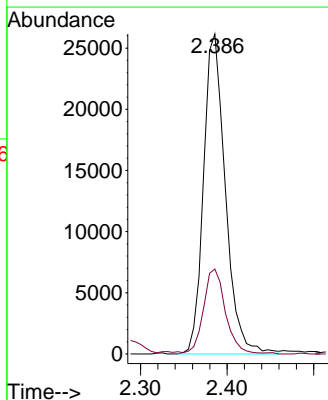
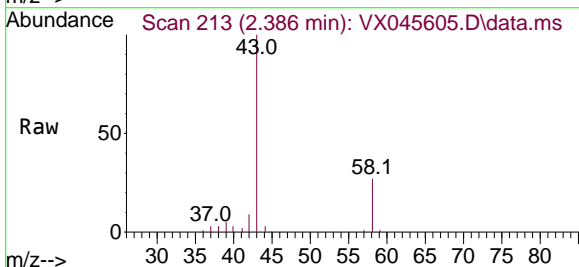
Ion	Ratio	Lower	Upper
41	100		
39	36.0	60.2	90.2#
76	0.0	24.6	36.8#

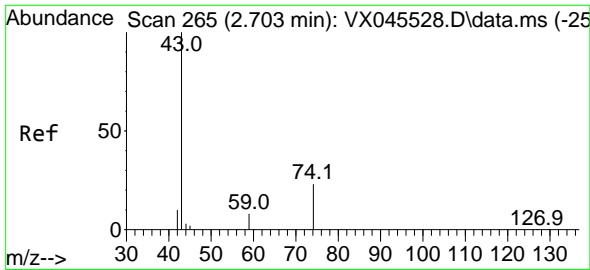


#16
 Acetone
 Concen: 88.875 ug/l
 RT: 2.386 min Scan# 213
 Delta R.T. 0.000 min
 Lab File: VX045605.D
 Acq: 04 Apr 2025 17:29

Tgt Ion: 43 Resp: 45908

Ion	Ratio	Lower	Upper
43	100		
58	26.6	22.3	33.5

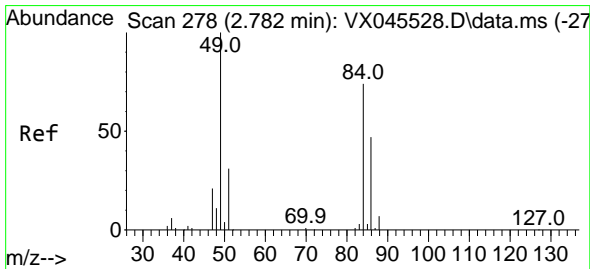
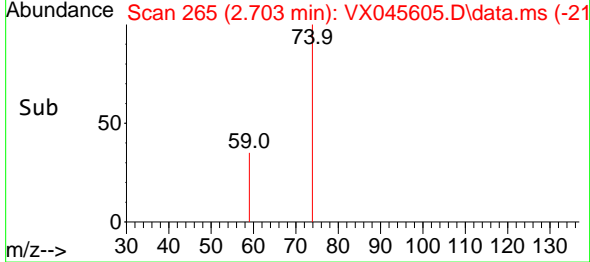
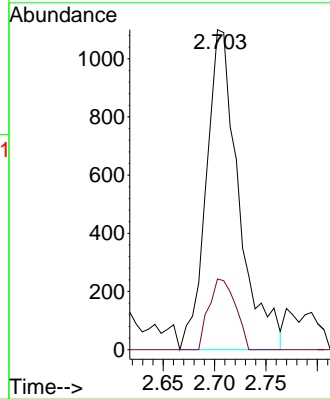
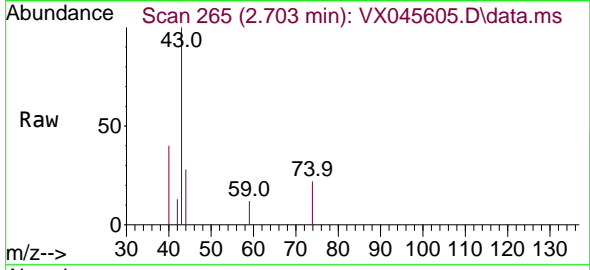




#18
 Methyl Acetate
 Concen: 2.032 ug/l
 RT: 2.703 min Scan# 20
 Delta R.T. 0.000 min
 Lab File: VX045605.D
 Acq: 04 Apr 2025 17:29

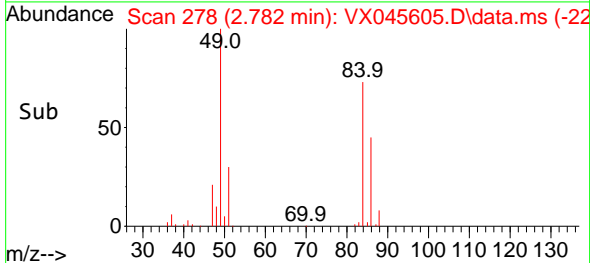
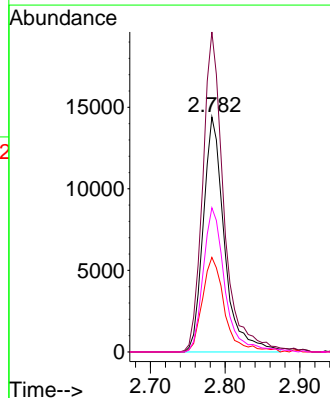
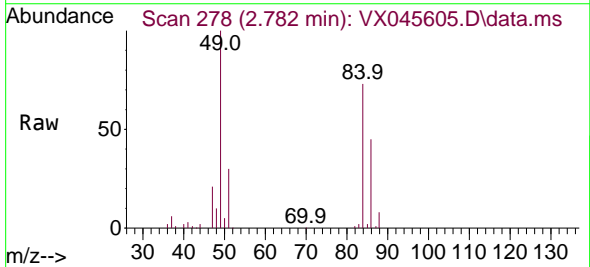
Instrument : MSVOA_X
 ClientSampleId : PB167448ZHE#04

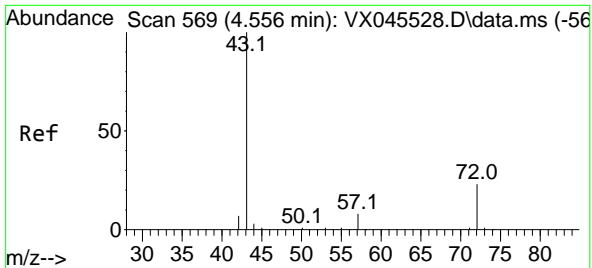
Tgt Ion: 43 Resp: 2417
 Ion Ratio Lower Upper
 43 100
 74 18.0 17.5 26.3



#20
 Methylene Chloride
 Concen: 29.397 ug/l
 RT: 2.782 min Scan# 278
 Delta R.T. 0.000 min
 Lab File: VX045605.D
 Acq: 04 Apr 2025 17:29

Tgt Ion: 84 Resp: 28428
 Ion Ratio Lower Upper
 84 100
 49 136.1 107.5 161.3
 51 40.2 33.0 49.6
 86 61.3 50.1 75.1

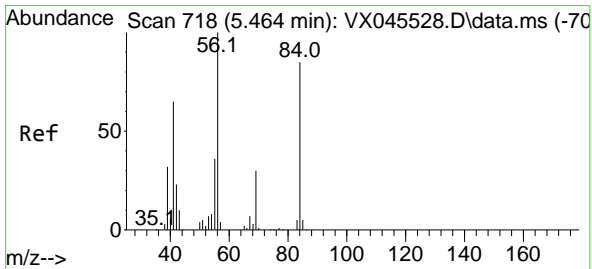
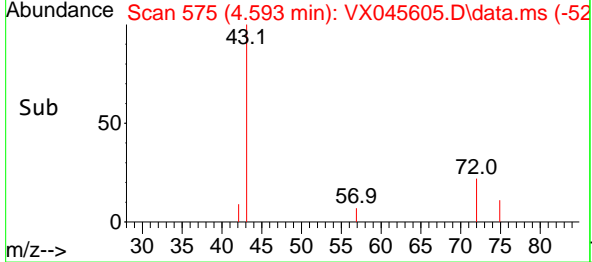
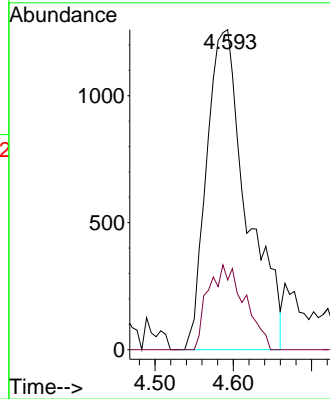
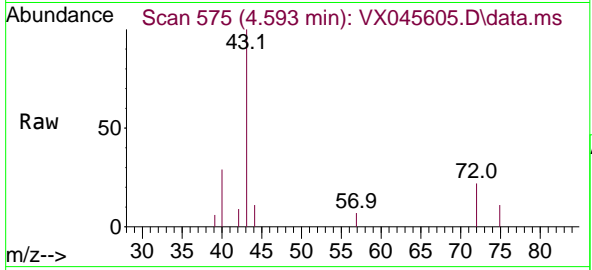




#25
 2-Butanone
 Concen: 5.948 ug/l
 RT: 4.593 min Scan# 51
 Delta R.T. 0.037 min
 Lab File: VX045605.D
 Acq: 04 Apr 2025 17:29

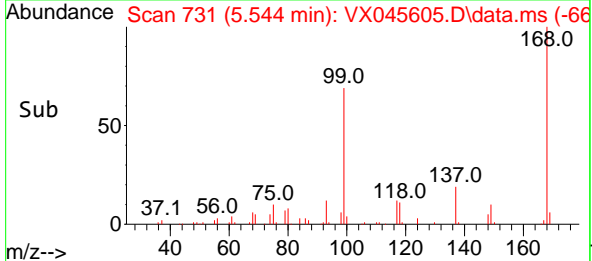
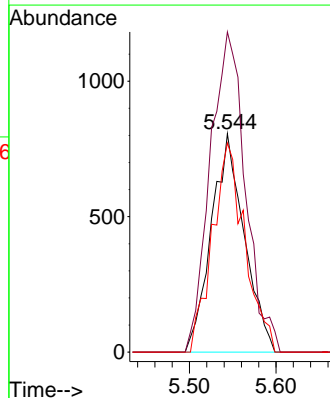
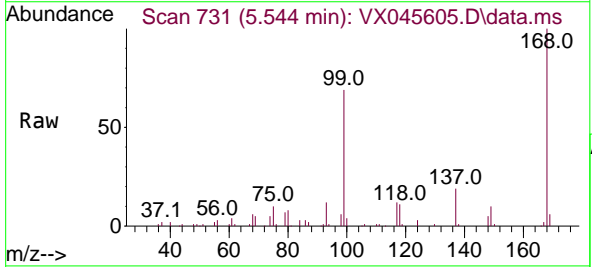
Instrument : MSVOA_X
 ClientSampleId : PB167448ZHE#04

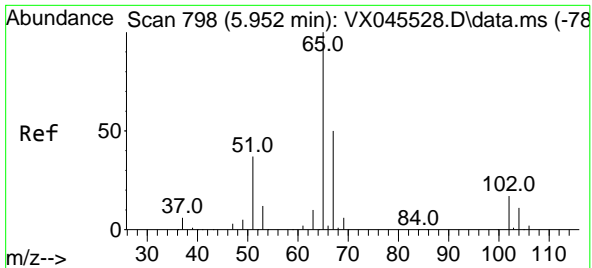
Tgt Ion: 43 Resp: 4497
 Ion Ratio Lower Upper
 43 100
 72 21.7 18.6 28.0



#31
 Cyclohexane
 Concen: 1.382 ug/l
 RT: 5.544 min Scan# 731
 Delta R.T. 0.079 min
 Lab File: VX045605.D
 Acq: 04 Apr 2025 17:29

Tgt Ion: 56 Resp: 2133
 Ion Ratio Lower Upper
 56 100
 69 146.7 23.6 35.4#
 84 95.8 67.7 101.5

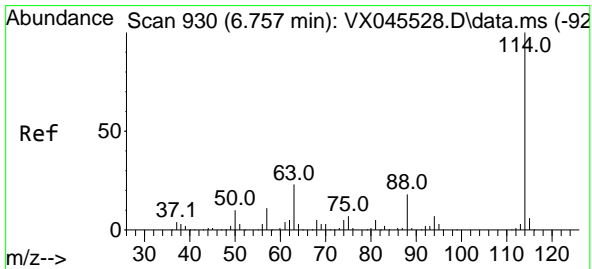
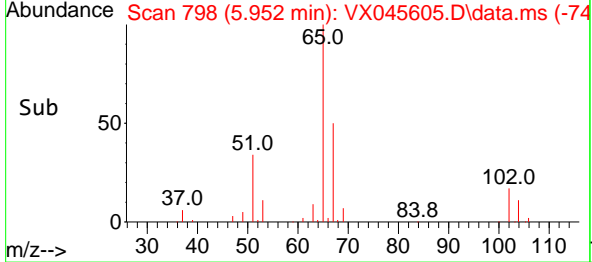
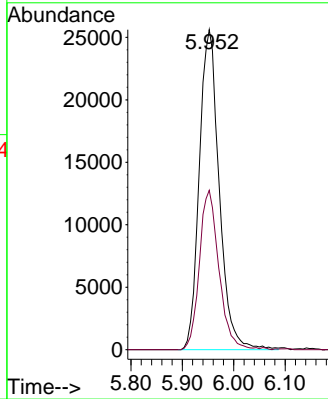
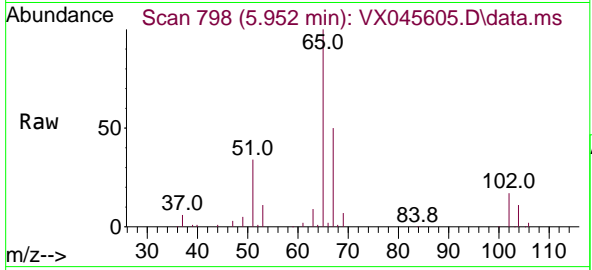




#33
 1,2-Dichloroethane-d4
 Concen: 54.702 ug/l
 RT: 5.952 min Scan# 798
 Delta R.T. 0.000 min
 Lab File: VX045605.D
 Acq: 04 Apr 2025 17:29

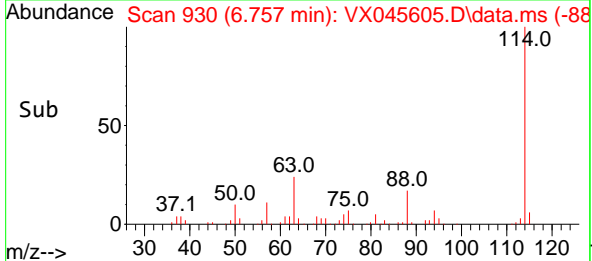
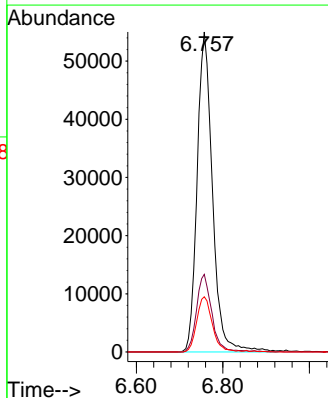
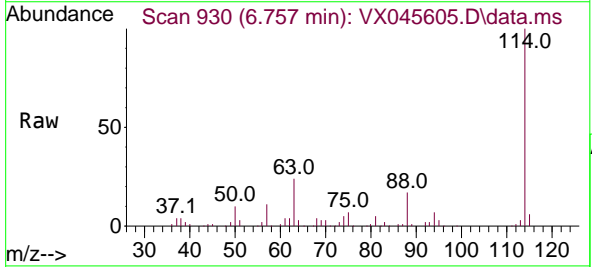
Instrument : MSVOA_X
 ClientSampleId : PB167448ZHE#04

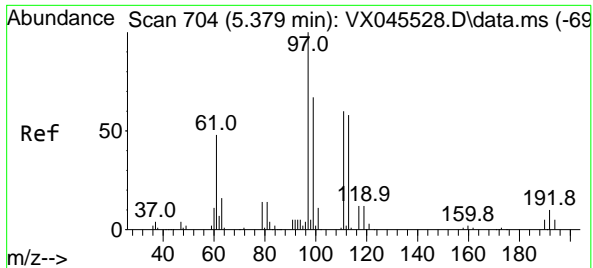
Tgt Ion: 65 Resp: 68812
 Ion Ratio Lower Upper
 65 100
 67 48.8 0.0 99.0



#34
 1,4-Difluorobenzene
 Concen: 50.000 ug/l
 RT: 6.757 min Scan# 930
 Delta R.T. 0.000 min
 Lab File: VX045605.D
 Acq: 04 Apr 2025 17:29

Tgt Ion: 114 Resp: 135303
 Ion Ratio Lower Upper
 114 100
 63 24.2 0.0 46.8
 88 17.2 0.0 35.4

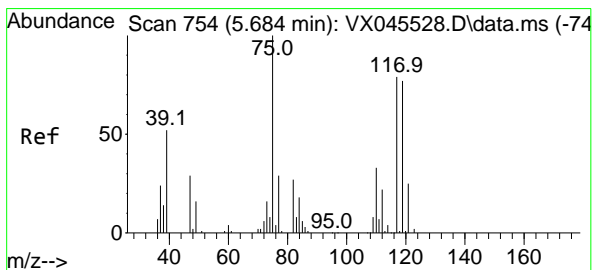
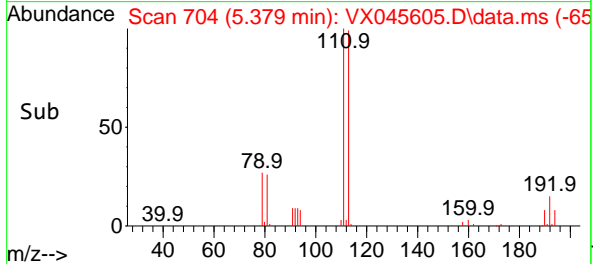
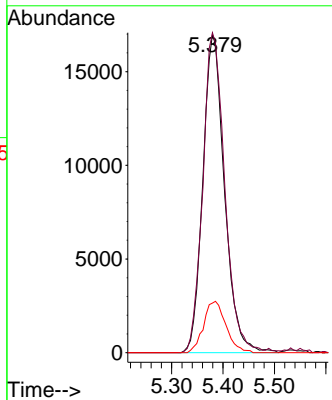
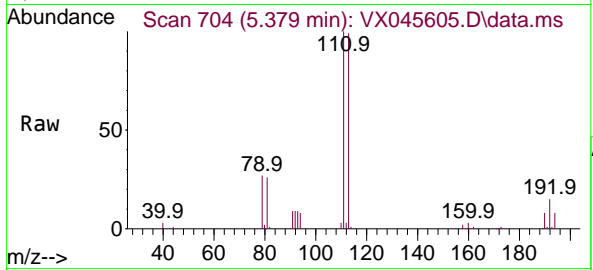




#35
 Dibromofluoromethane
 Concen: 51.693 ug/l
 RT: 5.379 min Scan# 704
 Delta R.T. 0.000 min
 Lab File: VX045605.D
 Acq: 04 Apr 2025 17:29

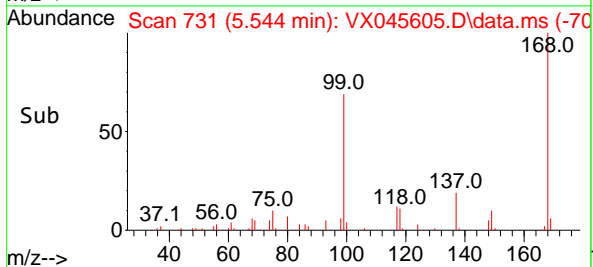
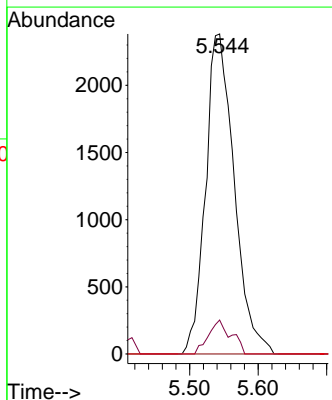
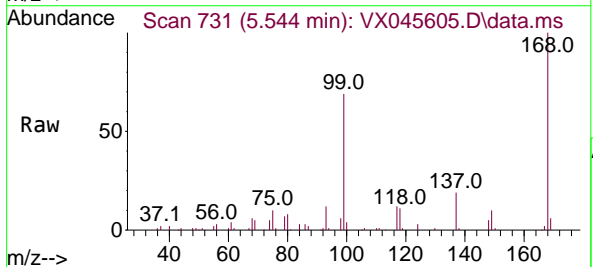
Instrument : MSVOA_X
 ClientSampleId : PB167448ZHE#04

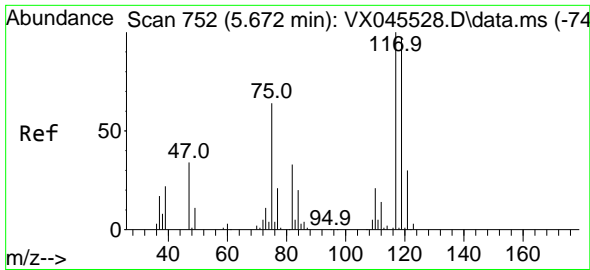
Tgt Ion:	113	Resp:	49624
Ion Ratio	Lower	Upper	
113	100		
111	102.2	81.8	122.6
192	16.7	13.8	20.6



#36
 1,1-Dichloropropene
 Concen: 5.338 ug/l
 RT: 5.544 min Scan# 731
 Delta R.T. -0.140 min
 Lab File: VX045605.D
 Acq: 04 Apr 2025 17:29

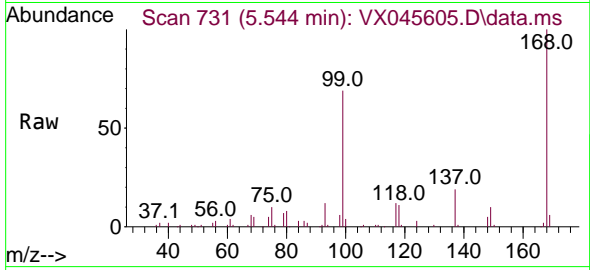
Tgt Ion:	75	Resp:	6919
Ion Ratio	Lower	Upper	
75	100		
110	8.4	16.9	50.6#
77	0.0	25.0	37.4#



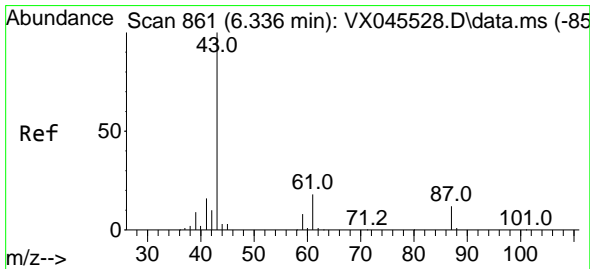
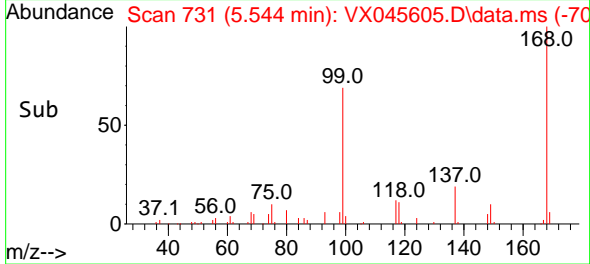
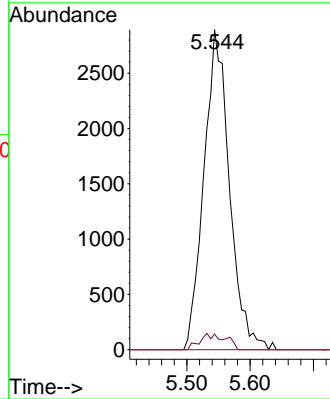


#38
 Carbon Tetrachloride
 Concen: 5.795 ug/l
 RT: 5.544 min Scan# 711
 Delta R.T. -0.128 min
 Lab File: VX045605.D
 Acq: 04 Apr 2025 17:29

Instrument : MSVOA_X
 ClientSampleId : PB167448ZHE#04

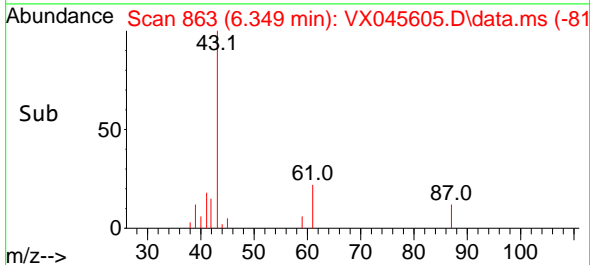
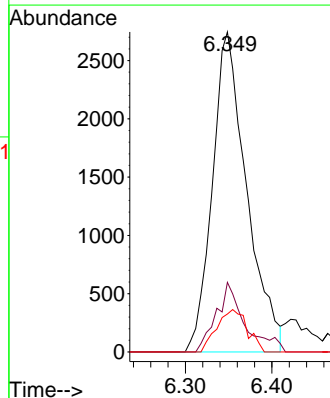
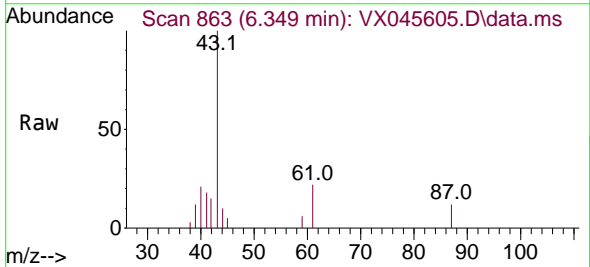


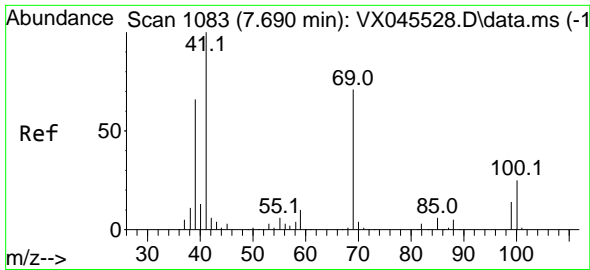
Tgt Ion:117 Resp: 8118
 Ion Ratio Lower Upper
 117 100
 119 4.8 76.9 115.3#
 121 0.0 24.2 36.2#



#43
 Isopropyl Acetate
 Concen: 3.045 ug/l
 RT: 6.349 min Scan# 863
 Delta R.T. 0.012 min
 Lab File: VX045605.D
 Acq: 04 Apr 2025 17:29

Tgt Ion: 43 Resp: 7539
 Ion Ratio Lower Upper
 43 100
 61 18.2 14.1 21.1
 87 11.7 9.2 13.8



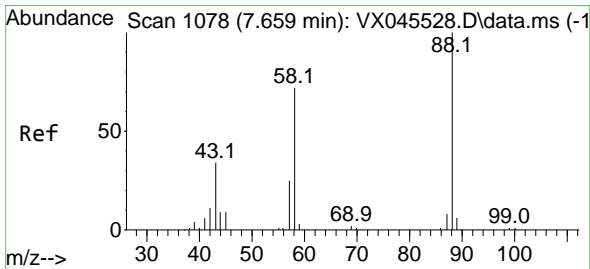
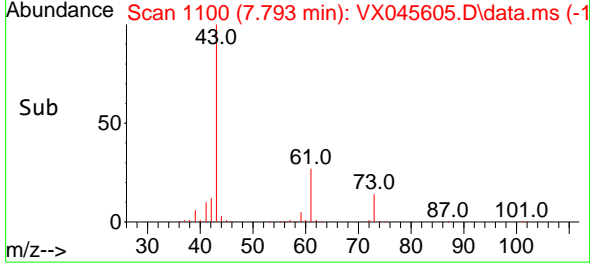
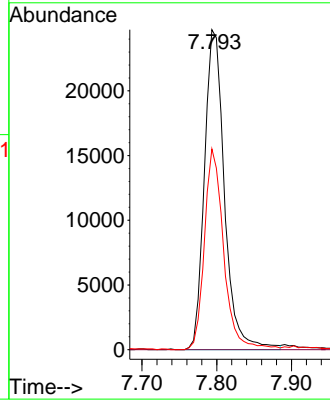
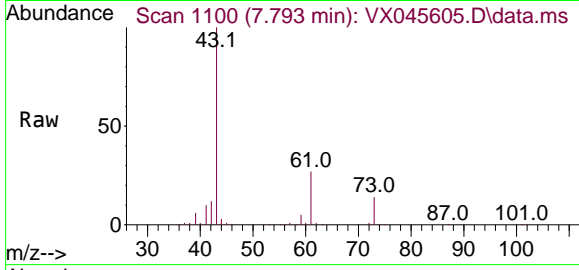


#48
 Methyl methacrylate
 Concen: 36.070 ug/l
 RT: 7.793 min Scan# 1100
 Delta R.T. 0.104 min
 Lab File: VX045605.D
 Acq: 04 Apr 2025 17:29

Instrument : MSVOA_X
 ClientSampleId : PB167448ZHE#04

Tgt Ion: 41 Resp: 46106

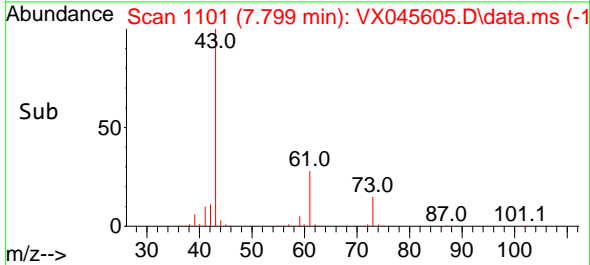
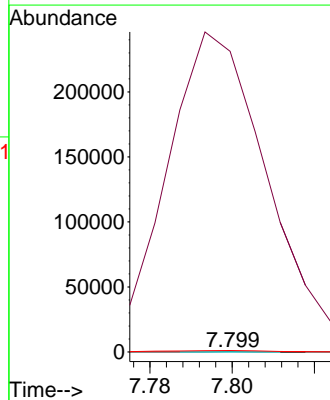
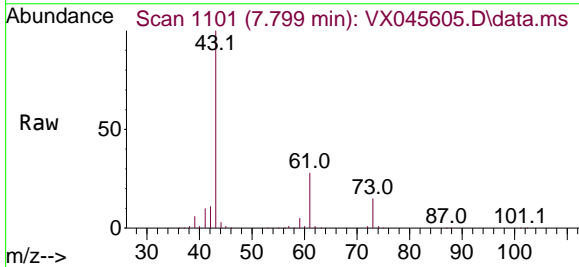
Ion	Ratio	Lower	Upper
41	100		
69	0.0	58.2	87.2#
39	60.3	53.6	80.4

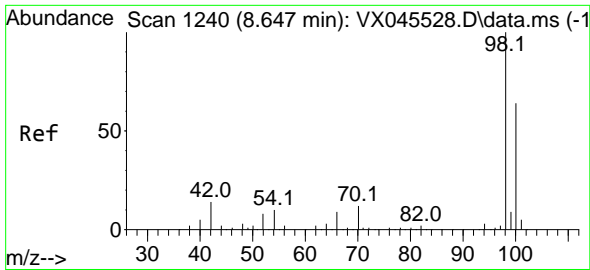


#49
 1,4-Dioxane
 Concen: 1.557 ug/l
 RT: 7.799 min Scan# 1101
 Delta R.T. 0.140 min
 Lab File: VX045605.D
 Acq: 04 Apr 2025 17:29

Tgt Ion: 88 Resp: 36

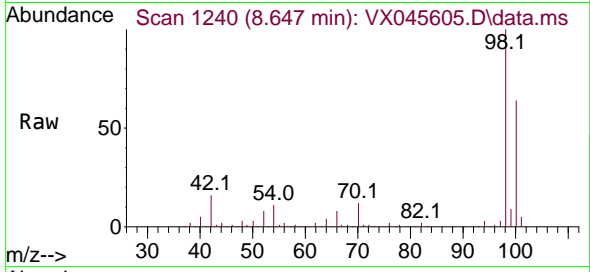
Ion	Ratio	Lower	Upper
88	100		
43	1227819.4	32.2	48.4#
58	5975.0	58.6	88.0#



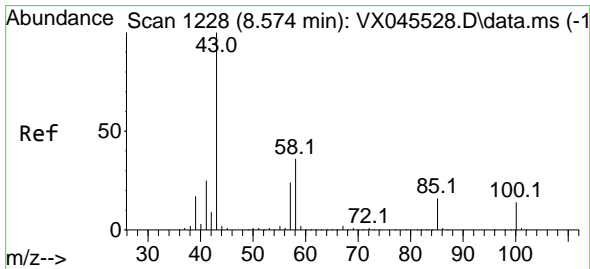
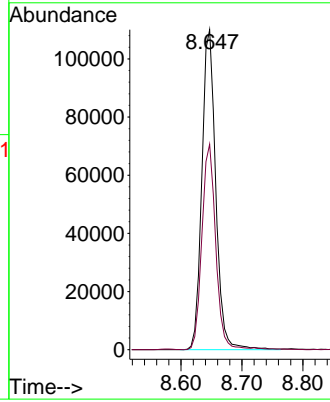
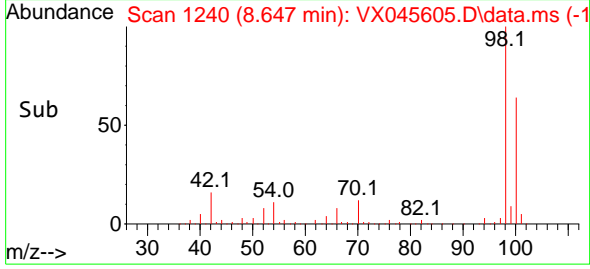


#50
 Toluene-d8
 Concen: 52.113 ug/l
 RT: 8.647 min Scan# 11
 Delta R.T. 0.000 min
 Lab File: VX045605.D
 Acq: 04 Apr 2025 17:29

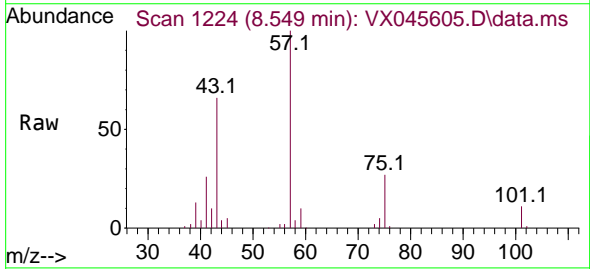
Instrument :
 MSVOA_X
 ClientSampleId :
 PB167448ZHE#04



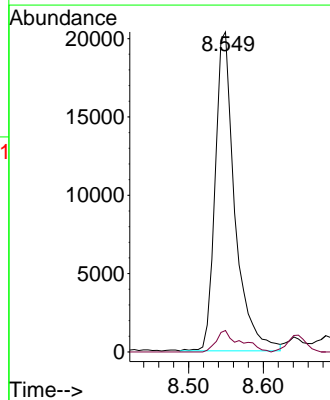
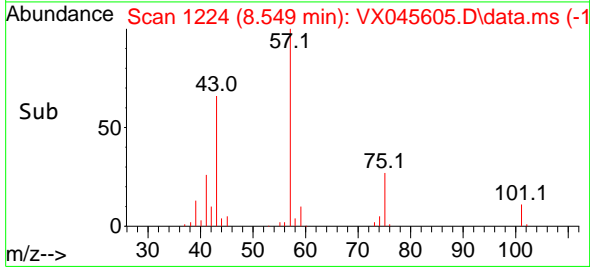
Tgt Ion: 98 Resp: 174614
 Ion Ratio Lower Upper
 98 100
 100 63.7 52.2 78.4

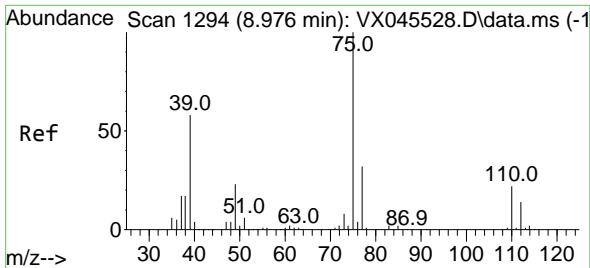


#51
 4-Methyl-2-Pentanone
 Concen: 22.746 ug/l
 RT: 8.549 min Scan# 1224
 Delta R.T. -0.024 min
 Lab File: VX045605.D
 Acq: 04 Apr 2025 17:29



Tgt Ion: 43 Resp: 37330
 Ion Ratio Lower Upper
 43 100
 58 8.1 28.5 42.7#

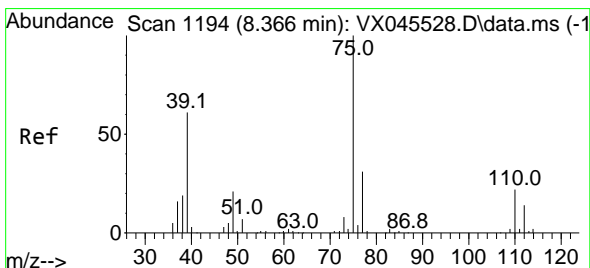
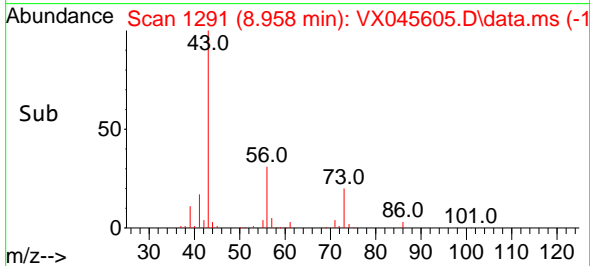
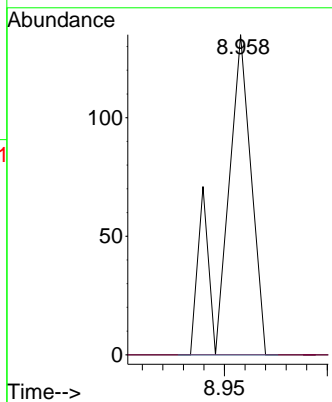
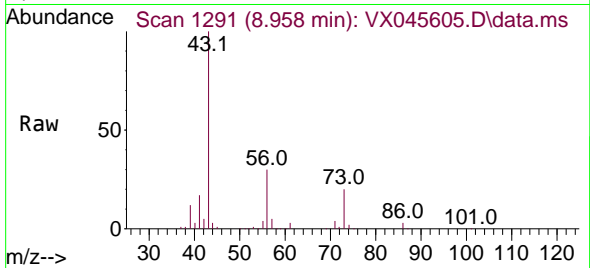




#53
 t-1,3-Dichloropropene
 Concen: 2.370 ug/l
 RT: 8.958 min Scan# 1123
 Delta R.T. -0.018 min
 Lab File: VX045605.D
 Acq: 04 Apr 2025 17:29

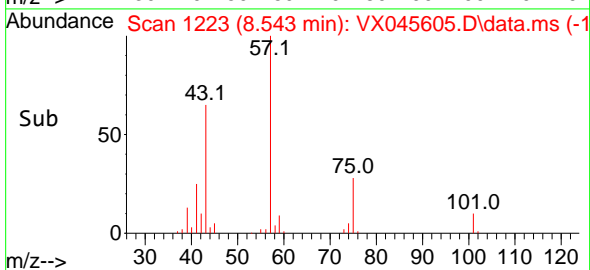
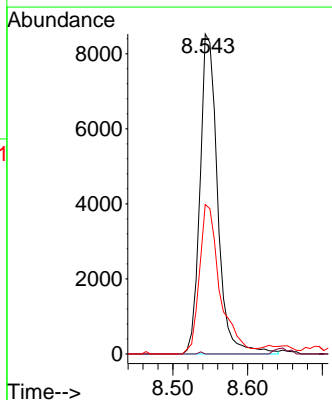
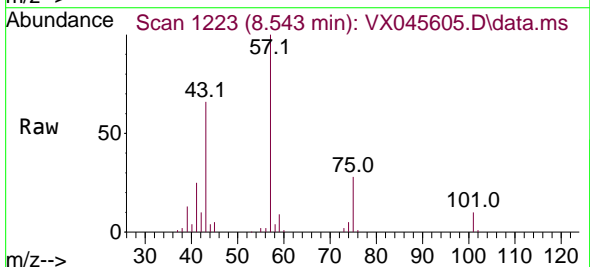
Instrument : MSVOA_X
 ClientSampleId : PB167448ZHE#04

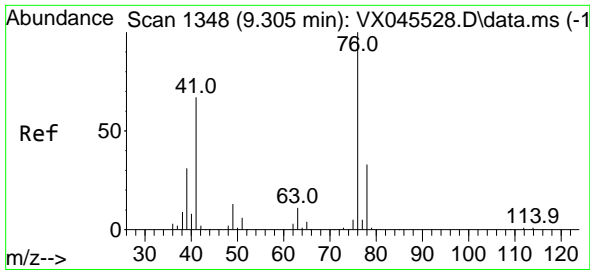
Tgt Ion: 75 Resp: 124
 Ion Ratio Lower Upper
 75 100
 77 0.0 25.4 38.0#



#54
 cis-1,3-Dichloropropene
 Concen: 9.814 ug/l
 RT: 8.543 min Scan# 1223
 Delta R.T. 0.177 min
 Lab File: VX045605.D
 Acq: 04 Apr 2025 17:29

Tgt Ion: 75 Resp: 13965
 Ion Ratio Lower Upper
 75 100
 77 0.0 24.6 36.8#
 39 46.7 48.4 72.6#

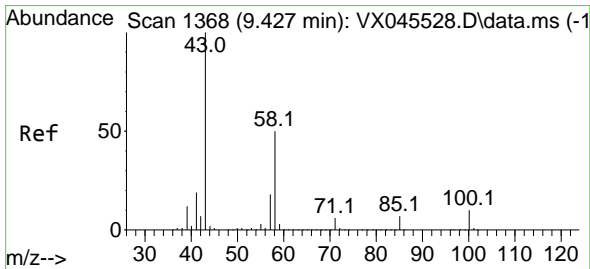
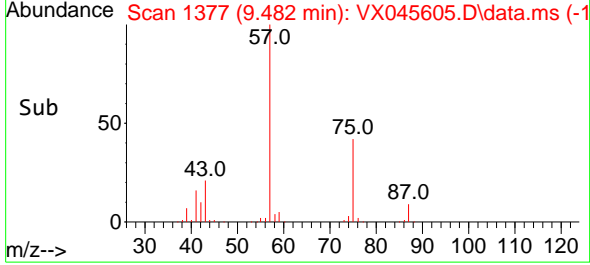
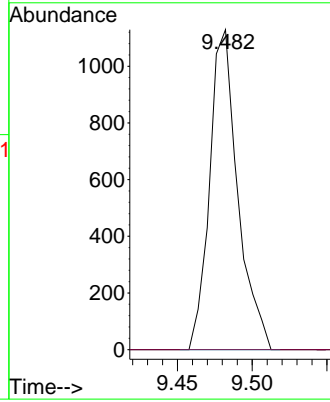
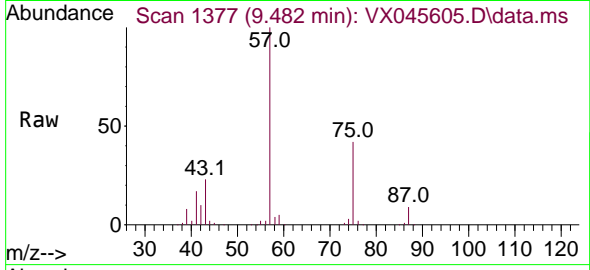




#57
 1,3-Dichloropropane
 Concen: 0.888 ug/l
 RT: 9.482 min Scan# 11
 Delta R.T. 0.177 min
 Lab File: VX045605.D
 Acq: 04 Apr 2025 17:29

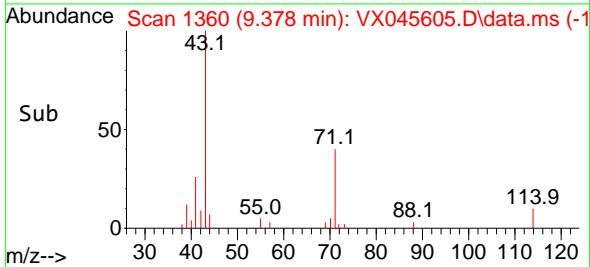
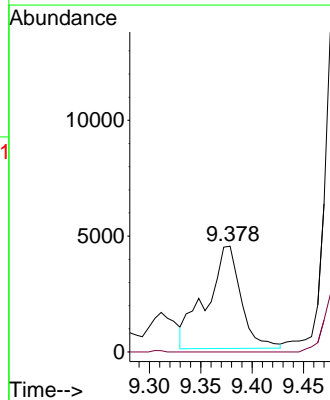
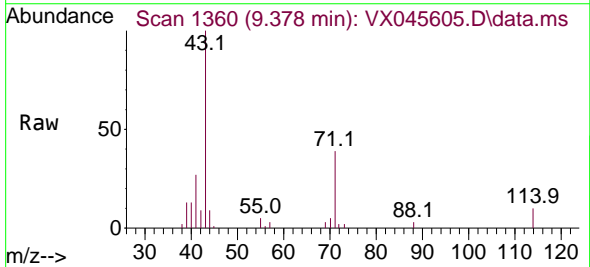
Instrument : MSVOA_X
 ClientSampleId : PB167448ZHE#04

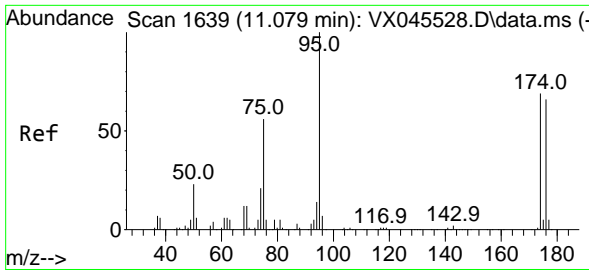
Tgt Ion: 76 Resp: 1476
 Ion Ratio Lower Upper
 76 100
 78 0.0 26.0 39.0#



#59
 2-Hexanone
 Concen: 8.458 ug/l
 RT: 9.378 min Scan# 1360
 Delta R.T. -0.049 min
 Lab File: VX045605.D
 Acq: 04 Apr 2025 17:29

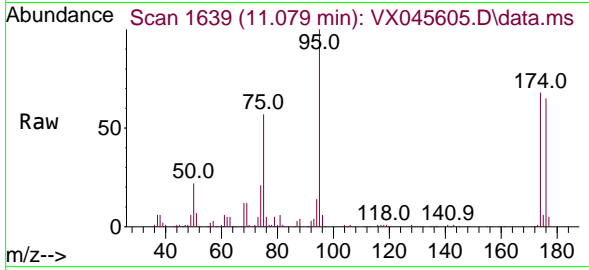
Tgt Ion: 43 Resp: 10279
 Ion Ratio Lower Upper
 43 100
 58 0.0 24.9 74.6#



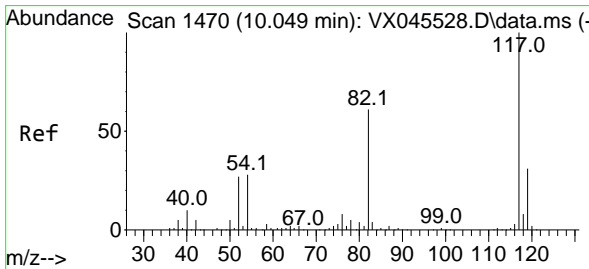
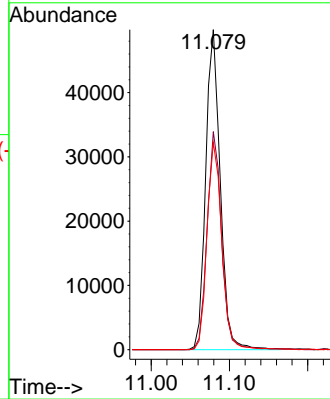
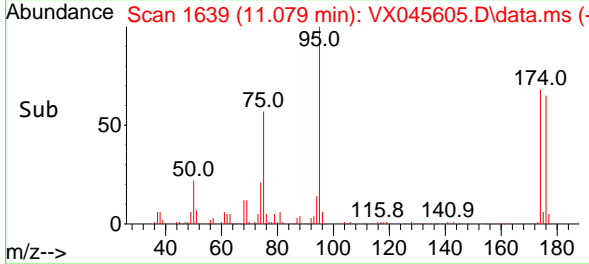


#62
 4-Bromofluorobenzene
 Concen: 52.568 ug/l
 RT: 11.079 min Scan# 1639
 Delta R.T. 0.000 min
 Lab File: VX045605.D
 Acq: 04 Apr 2025 17:29

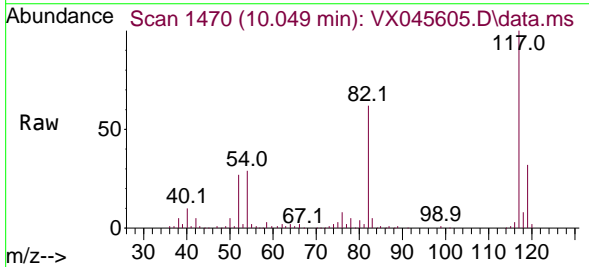
Instrument : MSVOA_X
 ClientSampleId : PB167448ZHE#04



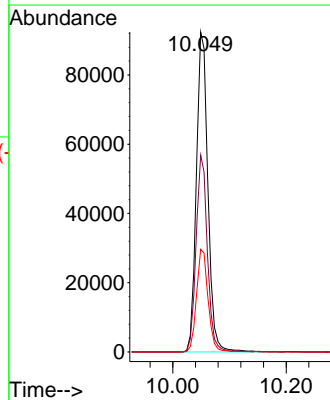
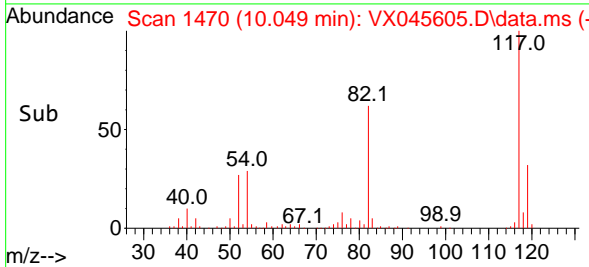
Tgt Ion: 95 Resp: 64159
 Ion Ratio Lower Upper
 95 100
 174 68.0 0.0 135.8
 176 66.0 0.0 131.4

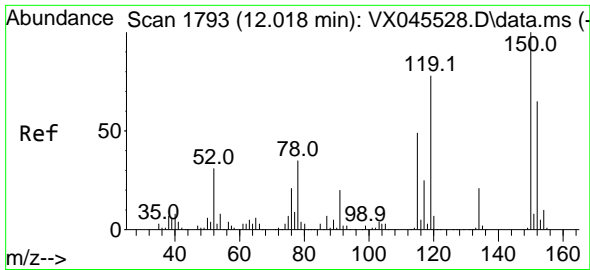


#63
 Chlorobenzene-d5
 Concen: 50.000 ug/l
 RT: 10.049 min Scan# 1470
 Delta R.T. 0.000 min
 Lab File: VX045605.D
 Acq: 04 Apr 2025 17:29



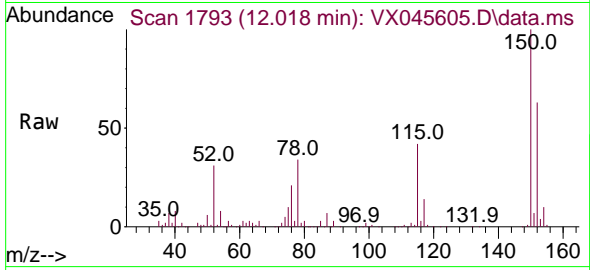
Tgt Ion: 117 Resp: 130586
 Ion Ratio Lower Upper
 117 100
 82 61.5 49.2 73.8
 119 32.1 25.1 37.7



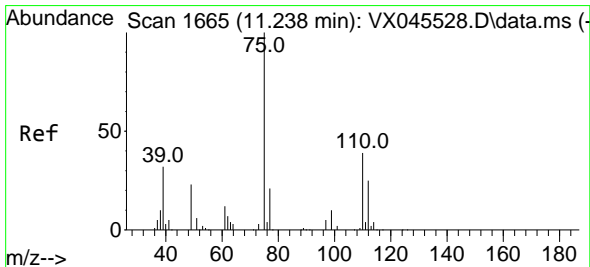
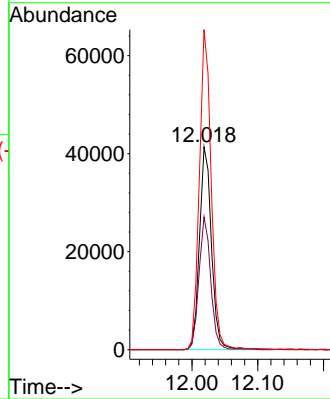
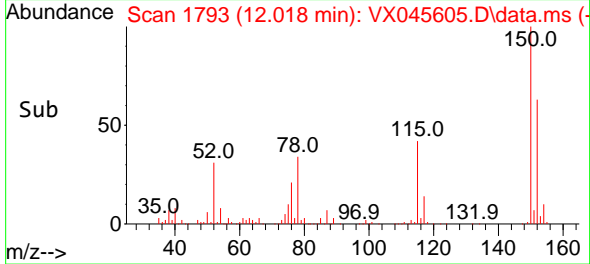


#72
 1,4-Dichlorobenzene-d4
 Concen: 50.000 ug/l
 RT: 12.018 min Scan# 1
 Delta R.T. 0.000 min
 Lab File: VX045605.D
 Acq: 04 Apr 2025 17:29

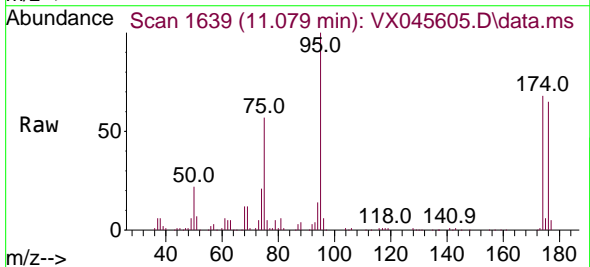
Instrument :
 MSVOA_X
 ClientSampleId :
 PB167448ZHE#04



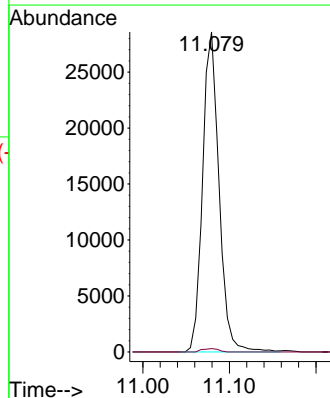
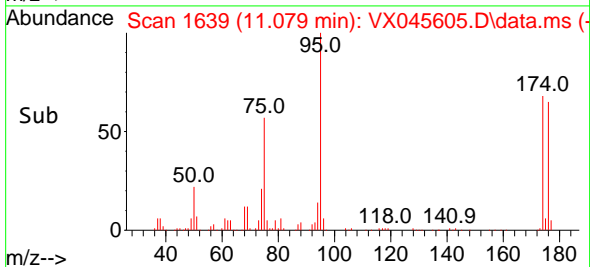
Tgt Ion:152 Resp: 52425
 Ion Ratio Lower Upper
 152 100
 115 64.3 46.9 140.7
 150 155.8 0.0 349.4

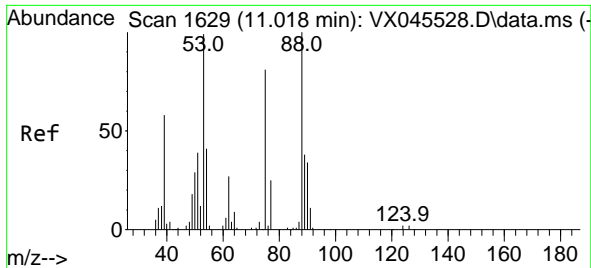


#76
 1,2,3-Trichloropropane
 Concen: 29.495 ug/l
 RT: 11.079 min Scan# 1639
 Delta R.T. -0.158 min
 Lab File: VX045605.D
 Acq: 04 Apr 2025 17:29



Tgt Ion: 75 Resp: 37717
 Ion Ratio Lower Upper
 75 100
 77 1.0 20.0 59.9#





#81
 trans-1,4-Dichloro-2-butene
 Concen: 100.102 ug/l
 RT: 11.079 min Scan# 1
 Delta R.T. 0.061 min
 Lab File: VX045605.D
 Acq: 04 Apr 2025 17:29

Instrument :
 MSVOA_X
 ClientSampleId :
 PB167448ZHE#04

Tgt Ion: 75 Resp: 37717
 Ion Ratio Lower Upper
 75 100
 53 0.0 101.8 152.6#
 89 0.0 37.2 55.8#

