

Data Path : Z:\voasrv\HPCHEM1\MSVOA_X\Data\VX040522\
 Data File : VX027983.D
 Acq On : 05 Apr 2022 15:45
 Operator : JC/MD
 Sample : IBLK
 Misc : 5.0mL/MSVOA_X/WATER
 ALS Vial : 10 Sample Multiplier: 1

Instrument :
 MSVOA_X
 ClientSampleId :
 IBLK

Manual Integrations
 APPROVED

Reviewed By : John Carlone 04/06/2022
 Supervised By : Mahesh Dadoda 04/06/2022

Quant Time: Apr 06 07:02:32 2022
 Quant Method : Z:\voasrv\HPCHEM1\MSVOA_X\Method\82X040522W.M
 Quant Title : SW846 8260
 QLast Update : Tue Apr 05 15:58:31 2022
 Response via : Initial Calibration

Compound	R.T.	QIon	Response	Conc	Units	Dev(Min)
Internal Standards						
1) Pentafluorobenzene	5.556	168	98753	50.000	ug/l	0.00
34) 1,4-Difluorobenzene	6.763	114	163642	50.000	ug/l	0.00
63) Chlorobenzene-d5	10.055	117	150285	50.000	ug/l	0.00
72) 1,4-Dichlorobenzene-d4	12.024	152	71704	50.000	ug/l	0.00
System Monitoring Compounds						
33) 1,2-Dichloroethane-d4	5.958	65	62604	50.811	ug/l	0.00
Spiked Amount	50.000	Range 61 - 141	Recovery	=	101.620%	
35) Dibromofluoromethane	5.385	113	55188	49.835	ug/l	0.00
Spiked Amount	50.000	Range 69 - 133	Recovery	=	99.680%	
50) Toluene-d8	8.653	98	193164	47.741	ug/l	0.00
Spiked Amount	50.000	Range 65 - 126	Recovery	=	95.480%	
62) 4-Bromofluorobenzene	11.085	95	75802	47.641	ug/l	0.00
Spiked Amount	50.000	Range 58 - 135	Recovery	=	95.280%	
Target Compounds						
						Qvalue
2) Dichlorodifluoromethane	1.166	85	341	0.310	ug/l	73
3) Chloromethane	1.294	50	290	0.307	ug/l	91
5) Bromomethane	1.611	94	443	1.102	ug/l #	67
7) Trichlorofluoromethane	1.892	101	352	0.219	ug/l	86
9) 1,1,2-Trichlorotrifluo...	2.337	101	279	0.286	ug/l #	77
10) Methyl Iodide	2.459	142	733	4.041	ug/l #	90
12) 1,1-Dichloroethene	2.319	96	230	0.247	ug/l	81
13) Acrolein	2.233	56	262	1.284	ug/l #	73
15) Acrylonitrile	3.075	53	548	1.017	ug/l	94
16) Acetone	2.380	43	568	1.232	ug/l #	82
17) Carbon Disulfide	2.514	76	3164	1.267	ug/l	96
20) Methylene Chloride	2.788	84	327	0.316	ug/l #	70
21) trans-1,2-Dichloroethene	3.099	96	551	0.536	ug/l	95
23) Vinyl Acetate	3.745	43	600	0.245	ug/l #	66
39) Methylcyclohexane	7.385	83	459	0.252	ug/l	95
44) Trichloroethene	7.129	130	427	0.342	ug/l	72
64) Tetrachloroethene	9.275	164	336	0.284	ug/l #	82
68) m/p-Xylenes	10.305	106	750	0.351	ug/l	78
77) Bromobenzene	11.195	156	279	0.213	ug/l	95
78) n-propylbenzene	11.305	91	1469	0.257	ug/l	99
82) 4-Chlorotoluene	11.457	91	1265	0.309	ug/l	97
84) 1,2,4-Trimethylbenzene	11.750	105	975	0.224	ug/l	94
85) sec-Butylbenzene	11.890	105	1257	0.237	ug/l	97
86) p-Isopropyltoluene	12.012	119	1286	0.286	ug/l #	77
87) 1,3-Dichlorobenzene	11.969	146	950	0.388	ug/l	90
88) 1,4-Dichlorobenzene	12.042	146	1100m	0.445	ug/l	
89) n-Butylbenzene	12.335	91	1526	0.401	ug/l	93
91) 1,2-Dichlorobenzene	12.341	146	618	0.259	ug/l	87
93) 1,2,4-Trichlorobenzene	13.591	180	1066	0.690	ug/l	95
94) Hexachlorobutadiene	13.725	225	993	1.346	ug/l	96
95) Naphthalene	13.780	128	2834	0.564	ug/l	95
96) 1,2,3-Trichlorobenzene	13.963	180	1077	0.714	ug/l	89

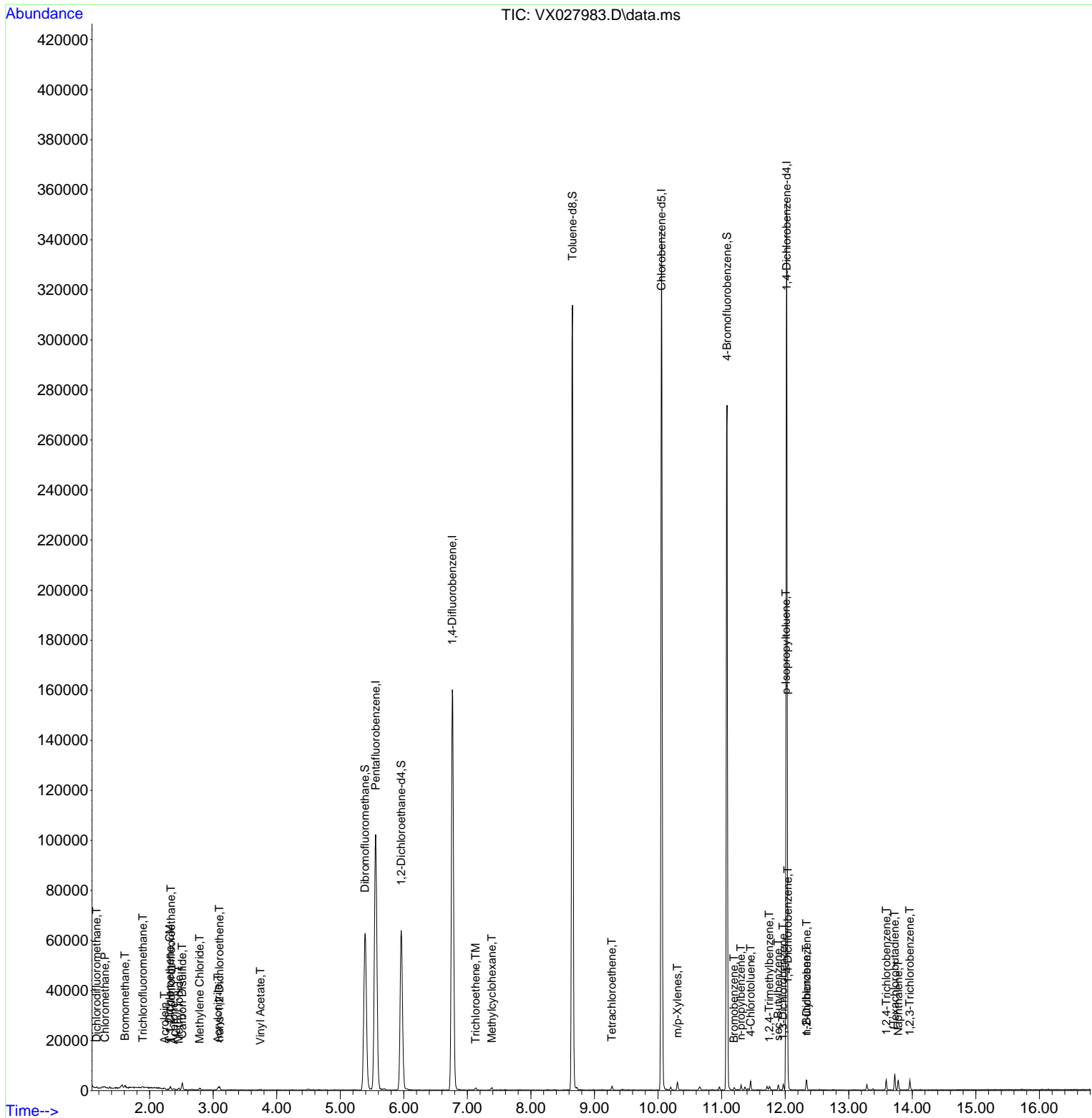
(#) = qualifier out of range (m) = manual integration (+) = signals summed

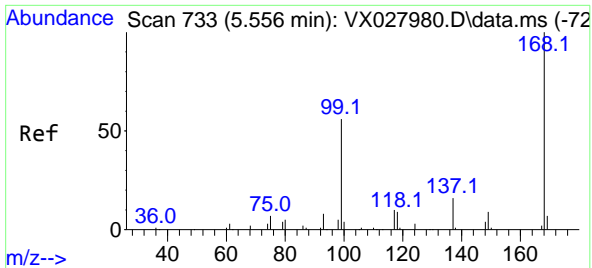
Data Path : Z:\voasrv\HPCHEM1\MSVOA_X\Data\VX040522\
 Data File : VX027983.D
 Acq On : 05 Apr 2022 15:45
 Operator : JC/MD
 Sample : IBLK
 Misc : 5.0mL/MSVOA_X/WATER
 ALS Vial : 10 Sample Multiplier: 1

Instrument :
 MSVOA_X
ClientSampleId :
 IBLK

Quant Time: Apr 06 07:02:32 2022
 Quant Method : Z:\voasrv\HPCHEM1\MSVOA_X\Method\82X040522W.M
 Quant Title : SW846 8260
 QLast Update : Tue Apr 05 15:58:31 2022
 Response via : Initial Calibration

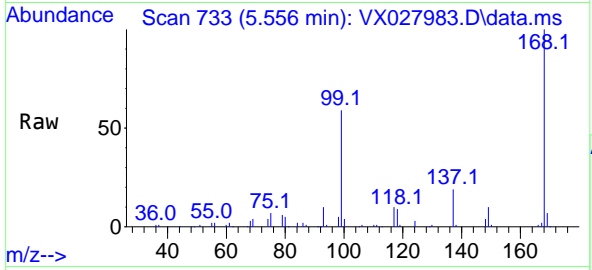
Manual Integrations
APPROVED
 Reviewed By :John Carlone 04/06/2022
 Supervised By :Mahesh Dadoda 04/06/2022





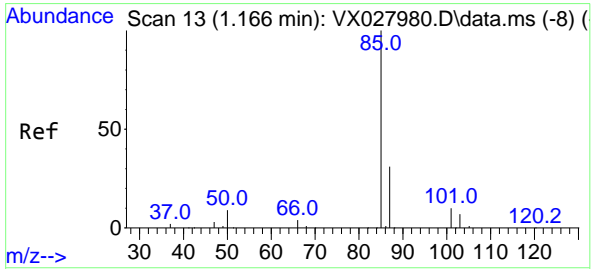
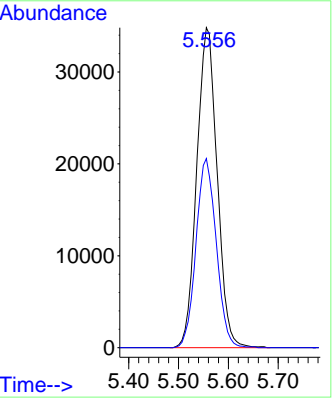
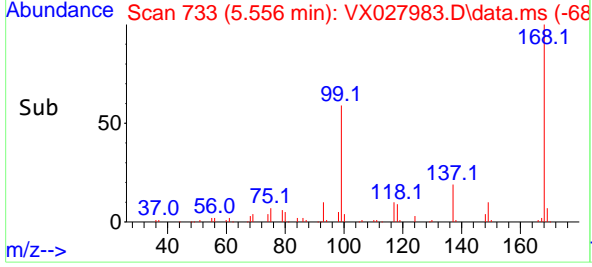
#1
 Pentafluorobenzene
 Concen: 50.000 ug/l
 RT: 5.556 min Scan# 71
 Delta R.T. -0.000 min
 Lab File: VX027983.D
 Acq: 05 Apr 2022 15:45

Instrument : MSVOA_X
 Client Sample Id : IBLK

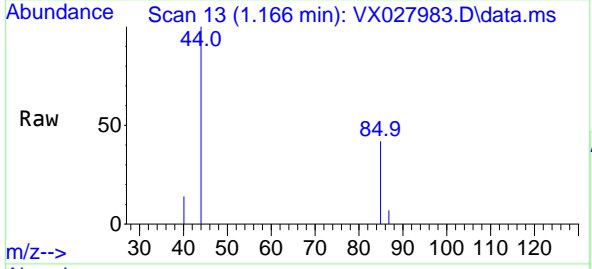


Tgt Ion: 168 Resp: 9875
 Ion Ratio Lower Upper
 168 100
 99 59.1 41.7 62.5

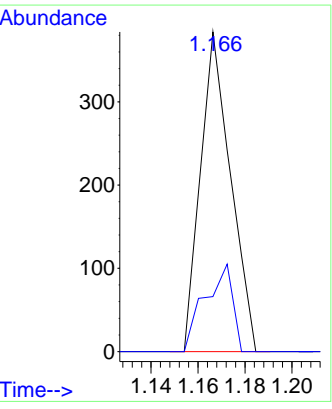
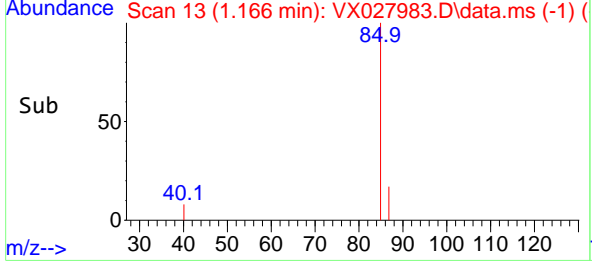
Manual Integrations
APPROVED
 Reviewed By : John Carlone 04/06/2022
 Supervised By : Mahesh Dadoda 04/06/2022

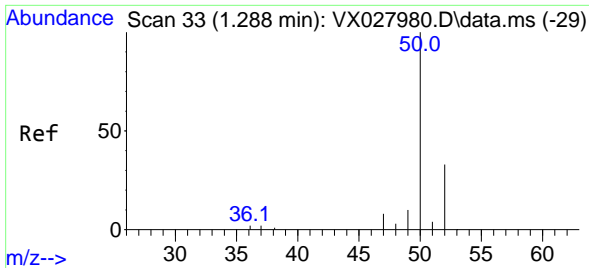


#2
 Dichlorodifluoromethane
 Concen: 0.310 ug/l
 RT: 1.166 min Scan# 13
 Delta R.T. 0.000 min
 Lab File: VX027983.D
 Acq: 05 Apr 2022 15:45



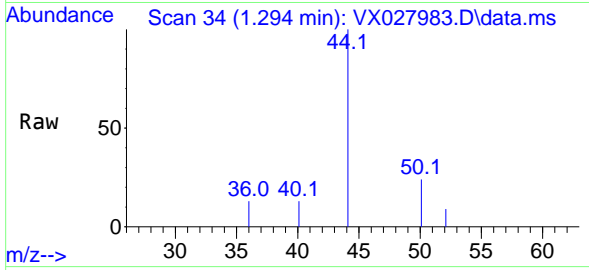
Tgt Ion: 85 Resp: 341
 Ion Ratio Lower Upper
 85 100
 87 17.2 16.2 48.6





#3
 Chloromethane
 Concen: 0.307 ug/l
 RT: 1.294 min Scan# 34
 Delta R.T. 0.006 min
 Lab File: VX027983.D
 Acq: 05 Apr 2022 15:45

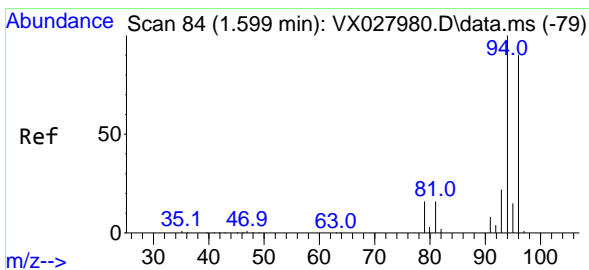
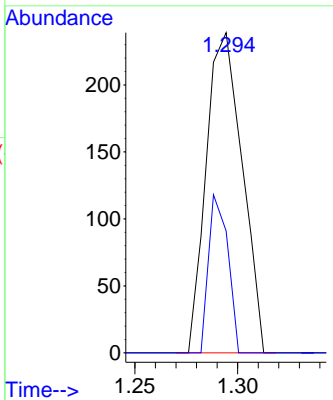
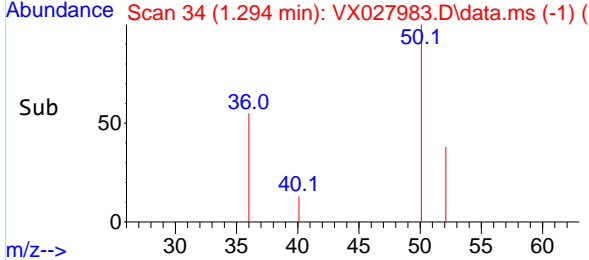
Instrument : MSVOA_X
 ClientSampleId : IBLK



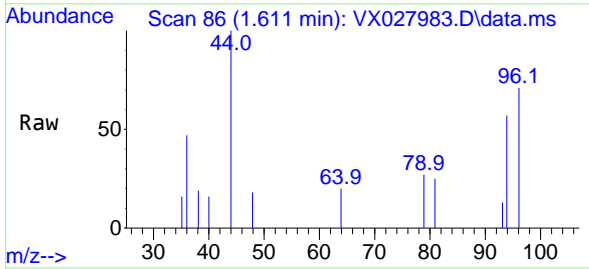
Tgt Ion: 50 Resp: 290
 Ion Ratio Lower Upper
 50 100
 52 38.1 26.4 39.6

Manual Integrations
APPROVED

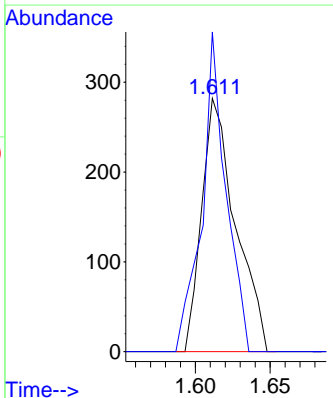
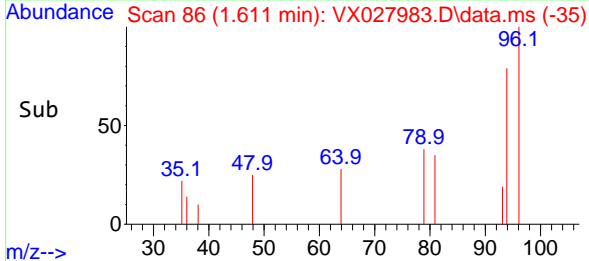
Reviewed By :John Carlone 04/06/2022
 Supervised By :Mahesh Dadoda 04/06/2022

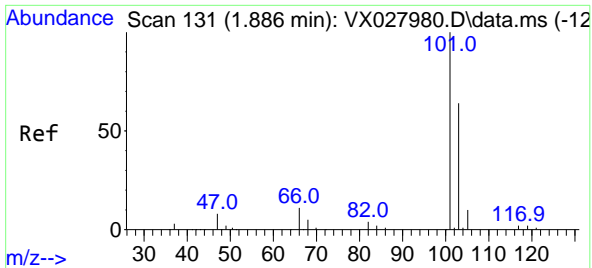


#5
 Bromomethane
 Concen: 1.102 ug/l
 RT: 1.611 min Scan# 86
 Delta R.T. 0.012 min
 Lab File: VX027983.D
 Acq: 05 Apr 2022 15:45



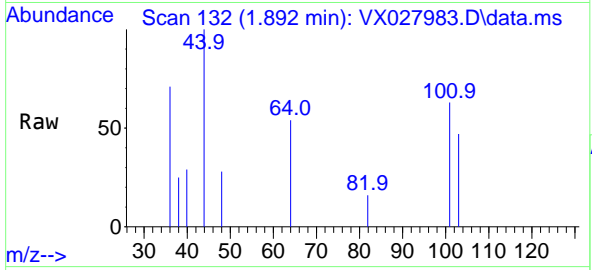
Tgt Ion: 94 Resp: 443
 Ion Ratio Lower Upper
 94 100
 96 126.2 75.3 112.9#





#7
 Trichlorofluoromethane
 Concen: 0.219 ug/l
 RT: 1.892 min Scan# 11
 Delta R.T. 0.006 min
 Lab File: VX027983.D
 Acq: 05 Apr 2022 15:45

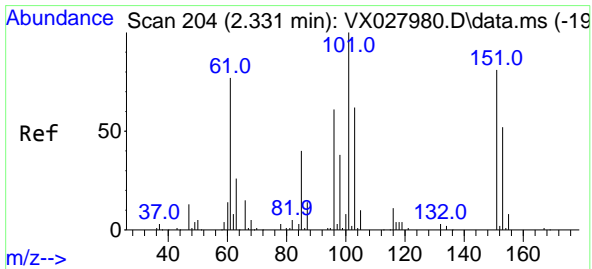
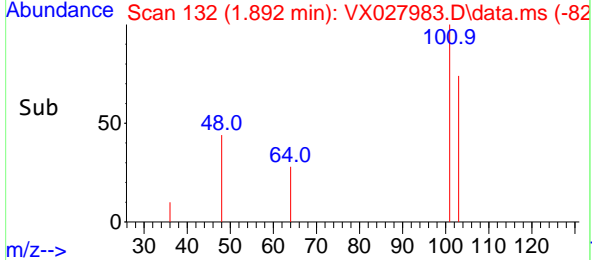
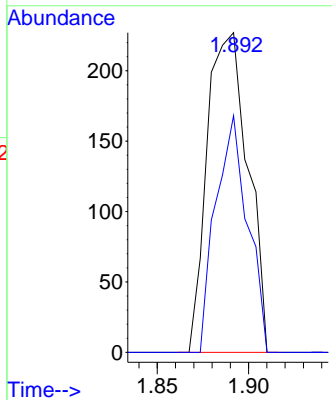
Instrument : MSVOA_X
 ClientSampleId : IBLK



Tgt Ion:101 Resp: 352
 Ion Ratio Lower Upper
 101 100
 103 74.0 50.5 75.7

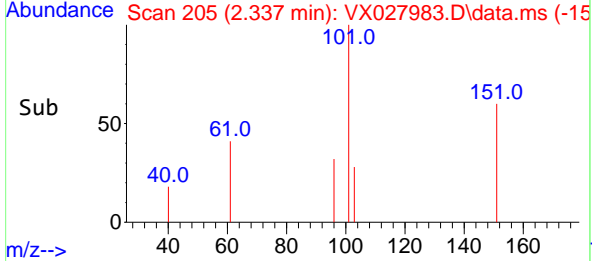
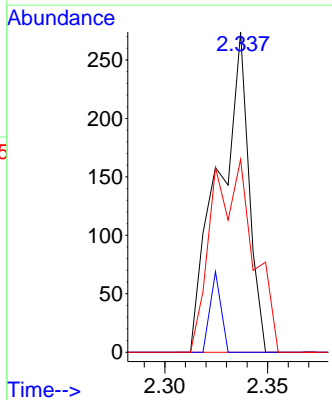
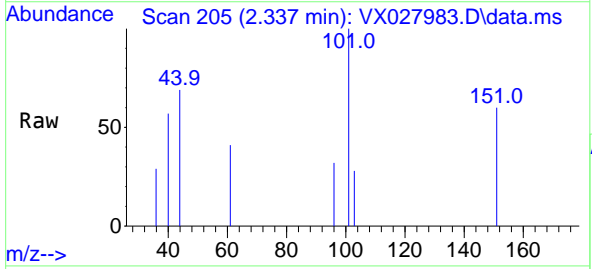
Manual Integrations
APPROVED

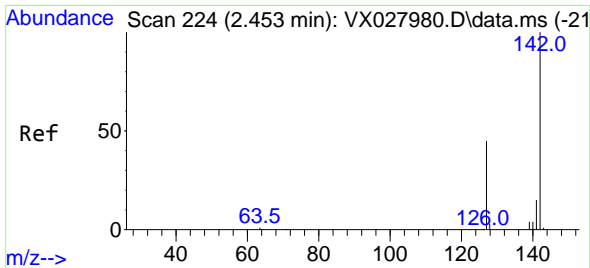
Reviewed By :John Carlone 04/06/2022
 Supervised By :Mahesh Dadoda 04/06/2022



#9
 1,1,2-Trichlorotrifluoroethane
 Concen: 0.286 ug/l
 RT: 2.337 min Scan# 205
 Delta R.T. 0.006 min
 Lab File: VX027983.D
 Acq: 05 Apr 2022 15:45

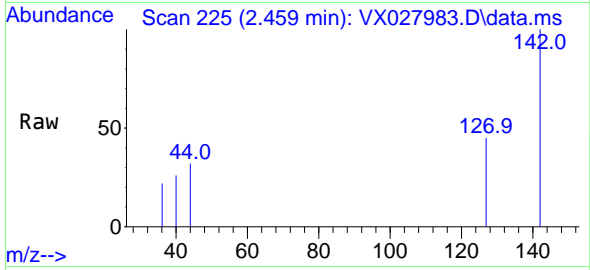
Tgt Ion:101 Resp: 279
 Ion Ratio Lower Upper
 101 100
 85 9.0 33.5 50.3#
 151 83.2 61.8 92.6





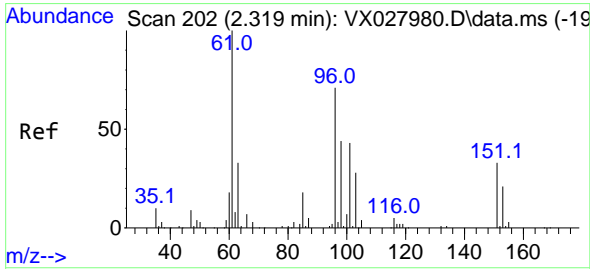
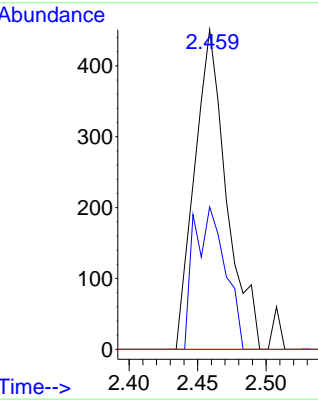
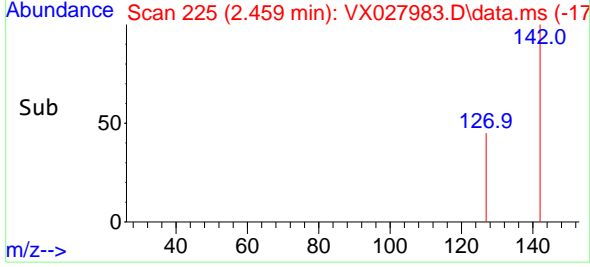
#10
Methyl Iodide
Concen: 4.041 ug/l
RT: 2.459 min Scan# 21
Delta R.T. 0.006 min
Lab File: VX027983.D
Acq: 05 Apr 2022 15:45

Instrument : MSVOA_X
Client SampleId : IBLK

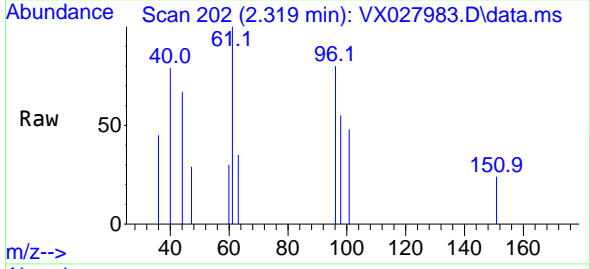


Tgt Ion: 142 Resp: 73
Ion Ratio Lower Upper
142 100
127 43.5 33.9 50.9
141 0.0 11.4 17.2

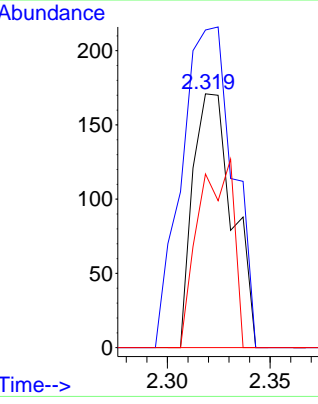
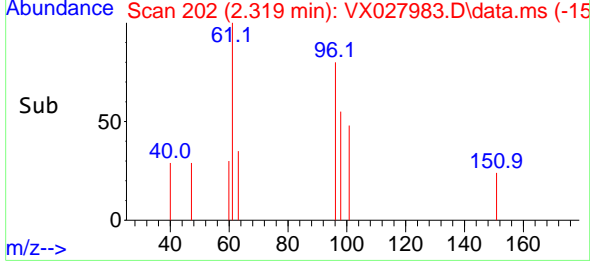
Manual Integrations
APPROVED
Reviewed By :John Carlone 04/06/2022
Supervised By :Mahesh Dadoda 04/06/2022

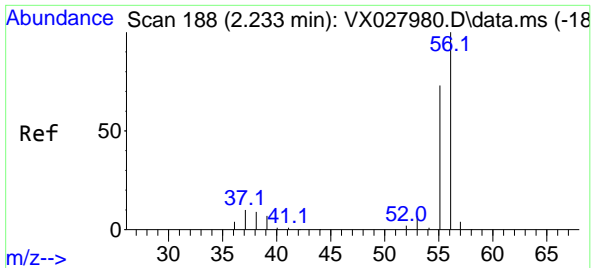


#12
1,1-Dichloroethene
Concen: 0.247 ug/l
RT: 2.319 min Scan# 202
Delta R.T. -0.000 min
Lab File: VX027983.D
Acq: 05 Apr 2022 15:45



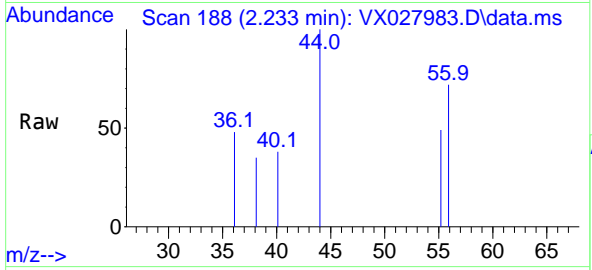
Tgt Ion: 96 Resp: 230
Ion Ratio Lower Upper
96 100
61 125.1 124.6 187.0
98 68.4 51.0 76.4





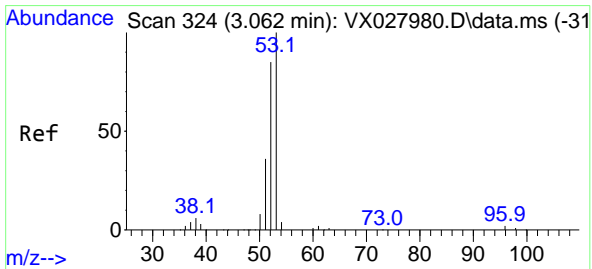
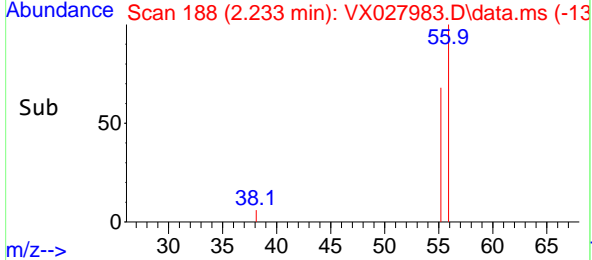
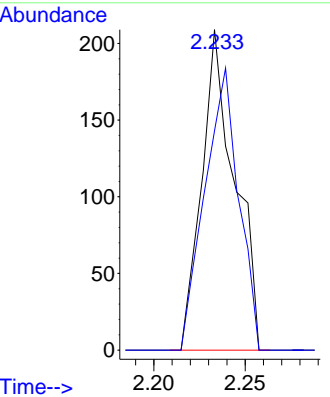
#13
 Acrolein
 Concen: 1.284 ug/l
 RT: 2.233 min Scan# 188
 Delta R.T. 0.000 min
 Lab File: VX027983.D
 Acq: 05 Apr 2022 15:45

Instrument : MSVOA_X
 ClientSampleId : IBLK

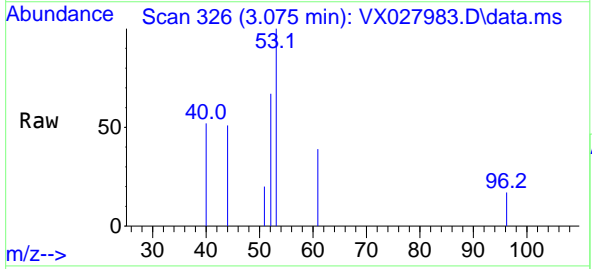


Tgt Ion: 56 Resp: 262
 Ion Ratio Lower Upper
 56 100
 55 90.5 55.0 82.6

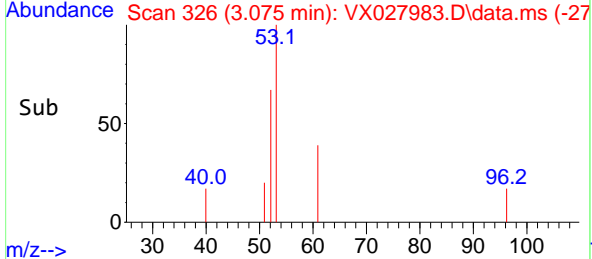
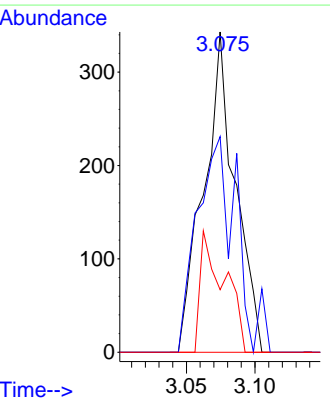
Manual Integrations
APPROVED
 Reviewed By :John Carlone 04/06/2022
 Supervised By :Mahesh Dadoda 04/06/2022

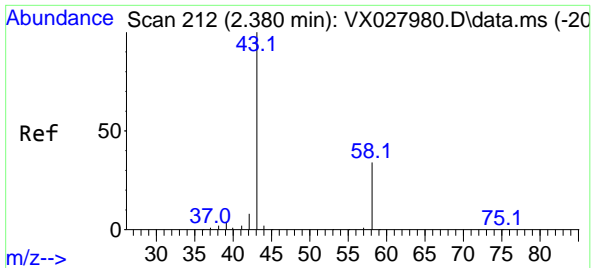


#15
 Acrylonitrile
 Concen: 1.017 ug/l
 RT: 3.075 min Scan# 326
 Delta R.T. 0.013 min
 Lab File: VX027983.D
 Acq: 05 Apr 2022 15:45



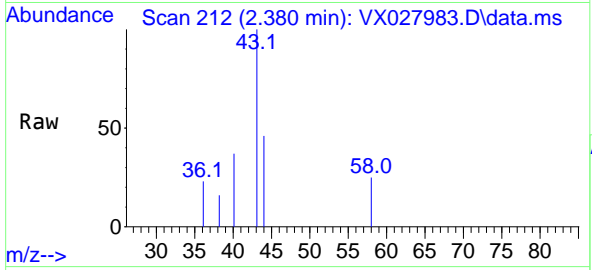
Tgt Ion: 53 Resp: 548
 Ion Ratio Lower Upper
 53 100
 52 79.2 65.7 98.5
 51 29.0 28.4 42.6





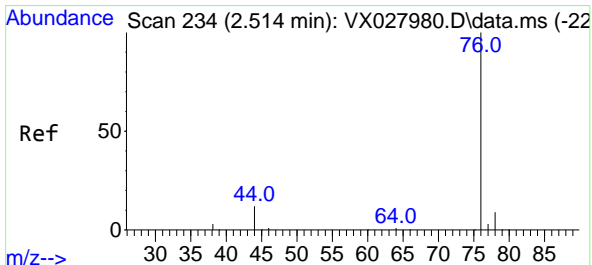
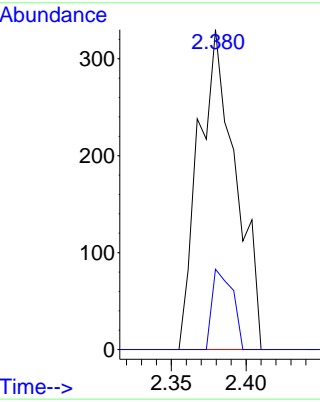
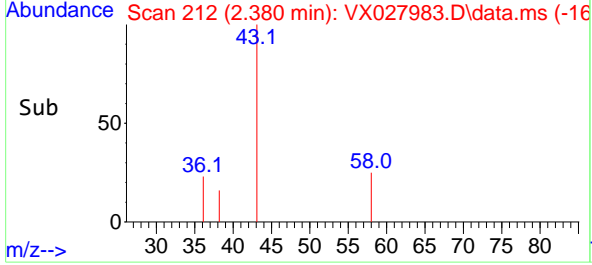
#16
 Acetone
 Concen: 1.232 ug/l
 RT: 2.380 min Scan# 212
 Delta R.T. -0.000 min
 Lab File: VX027983.D
 Acq: 05 Apr 2022 15:45

Instrument : MSVOA_X
 ClientSampleId : IBLK

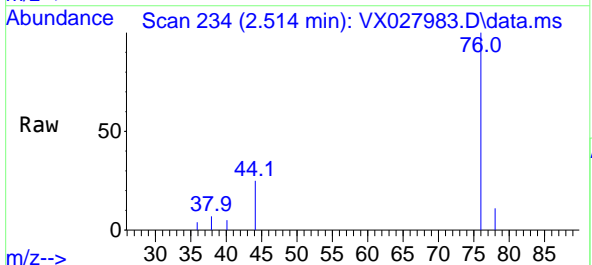


Tgt Ion: 43 Resp: 568
 Ion Ratio Lower Upper
 43 100
 58 25.2 28.8 43.2

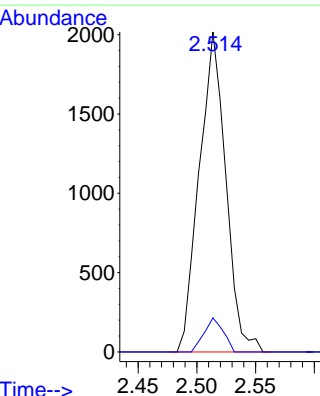
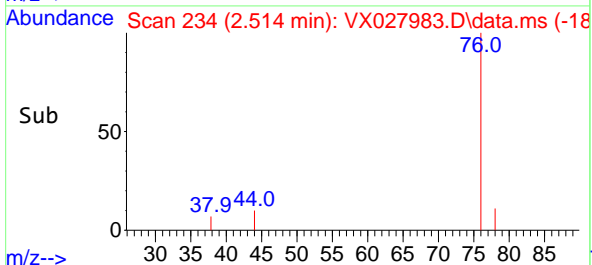
Manual Integrations
APPROVED
 Reviewed By :John Carlone 04/06/2022
 Supervised By :Mahesh Dadoda 04/06/2022

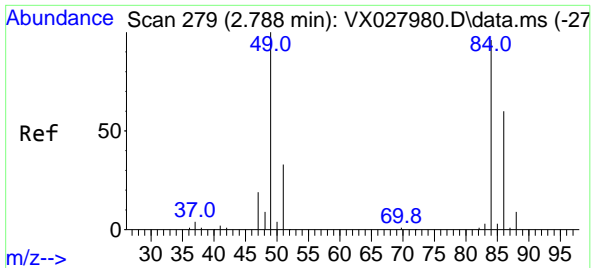


#17
 Carbon Disulfide
 Concen: 1.267 ug/l
 RT: 2.514 min Scan# 234
 Delta R.T. -0.000 min
 Lab File: VX027983.D
 Acq: 05 Apr 2022 15:45



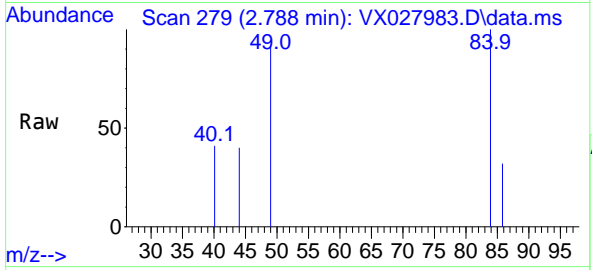
Tgt Ion: 76 Resp: 3164
 Ion Ratio Lower Upper
 76 100
 78 10.6 7.2 10.8





#20
 Methylene Chloride
 Concen: 0.316 ug/l
 RT: 2.788 min Scan# 21
 Delta R.T. -0.000 min
 Lab File: VX027983.D
 Acq: 05 Apr 2022 15:45

Instrument : MSVOA_X
 ClientSampleID : IBLK

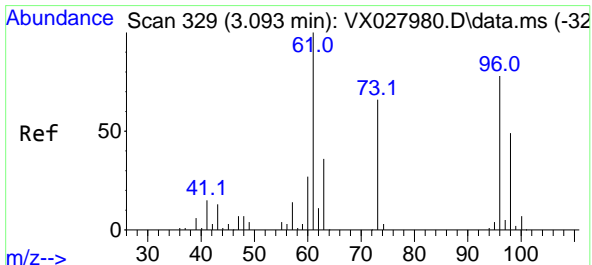
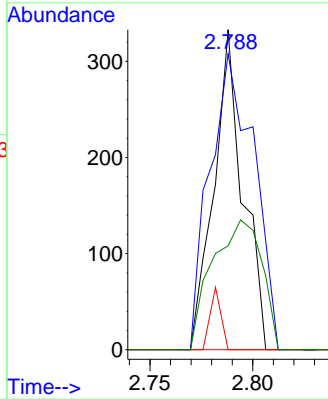
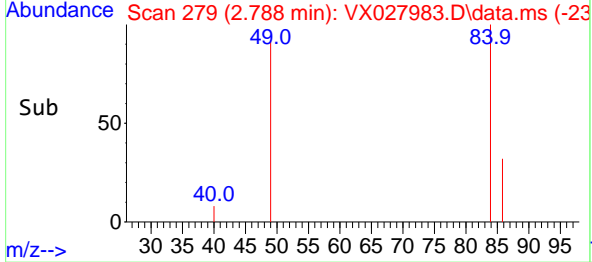


Tgt Ion: 84 Resp: 321

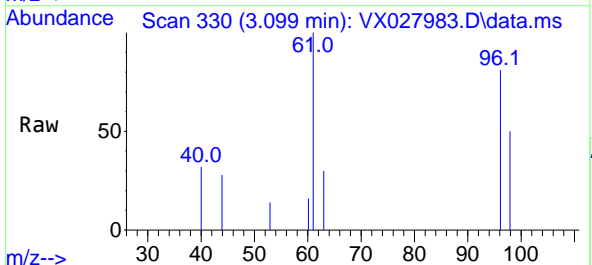
Ion	Ratio	Lower	Upper
84	100		
49	92.5	85.5	128.3
51	0.0	26.6	39.8
86	32.4	51.5	77.3

Manual Integrations
 APPROVED

Reviewed By :John Carlone 04/06/2022
 Supervised By :Mahesh Dadoda 04/06/2022

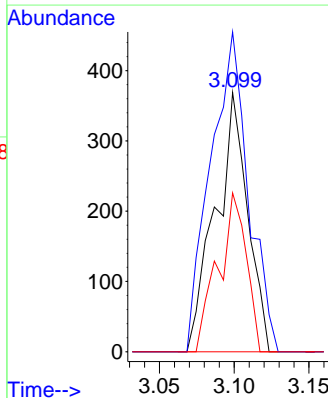
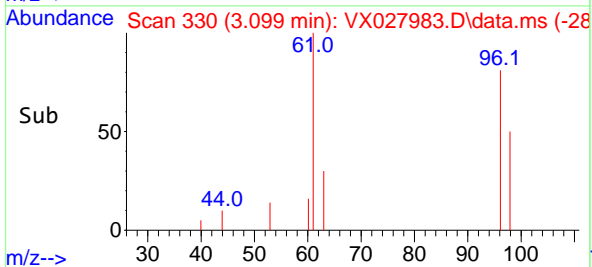


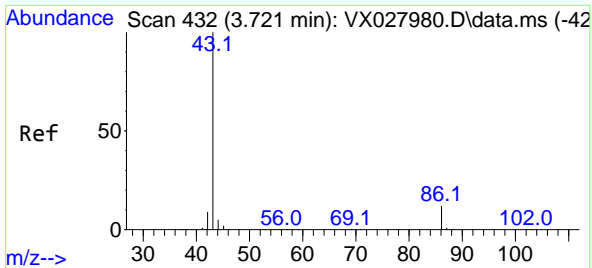
#21
 trans-1,2-Dichloroethene
 Concen: 0.536 ug/l
 RT: 3.099 min Scan# 330
 Delta R.T. 0.006 min
 Lab File: VX027983.D
 Acq: 05 Apr 2022 15:45



Tgt Ion: 96 Resp: 551

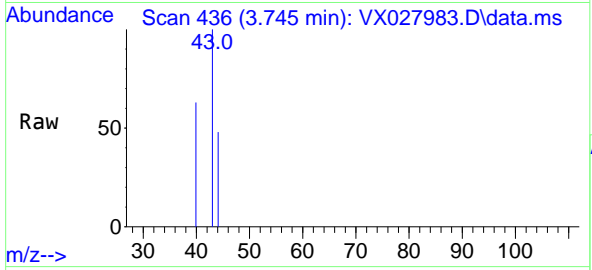
Ion	Ratio	Lower	Upper
96	100		
61	123.3	105.4	158.2
98	61.2	50.0	75.0





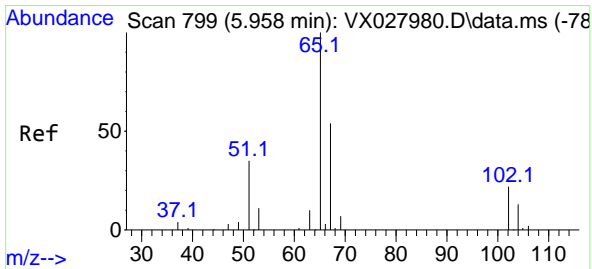
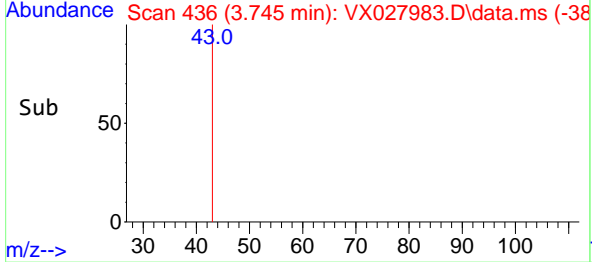
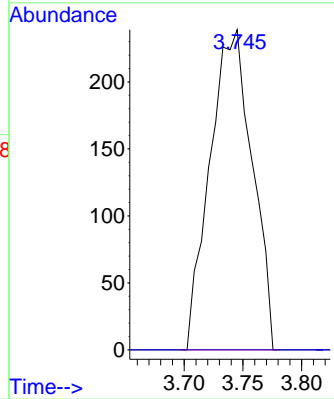
#23
 Vinyl Acetate
 Concen: 0.245 ug/l
 RT: 3.745 min Scan# 436
 Delta R.T. 0.024 min
 Lab File: VX027983.D
 Acq: 05 Apr 2022 15:45

Instrument : MSVOA_X
 ClientSampleId : IBLK

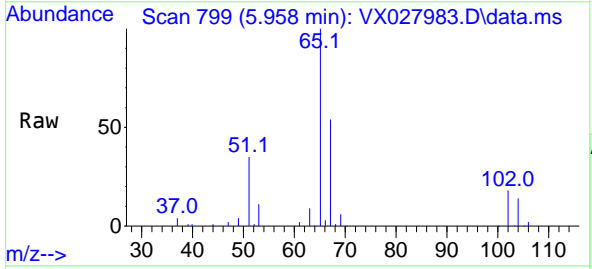


Tgt Ion: 43 Resp: 6000
 Ion Ratio Lower Upper
 43 100
 86 0.0 10.8 16.2

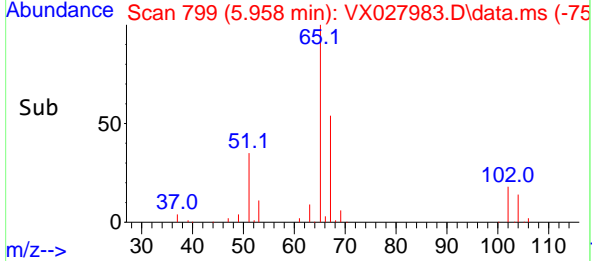
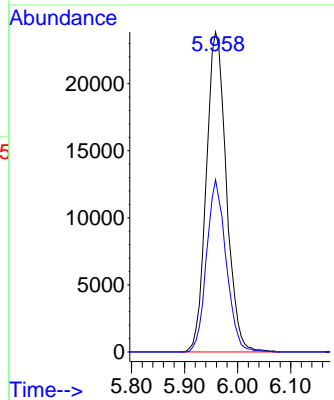
Manual Integrations
APPROVED
 Reviewed By :John Carlone 04/06/2022
 Supervised By :Mahesh Dadoda 04/06/2022

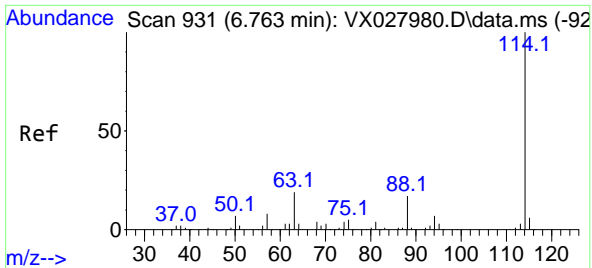


#33
 1,2-Dichloroethane-d4
 Concen: 50.811 ug/l
 RT: 5.958 min Scan# 799
 Delta R.T. 0.000 min
 Lab File: VX027983.D
 Acq: 05 Apr 2022 15:45



Tgt Ion: 65 Resp: 62604
 Ion Ratio Lower Upper
 65 100
 67 52.6 0.0 107.4





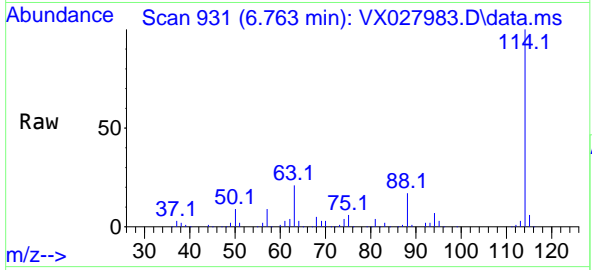
#34
 1,4-Difluorobenzene
 Concen: 50.000 ug/l
 RT: 6.763 min Scan# 911
 Delta R.T. -0.000 min
 Lab File: VX027983.D
 Acq: 05 Apr 2022 15:45

Instrument :

MSVOA_X

ClientSampleId :

IBLK



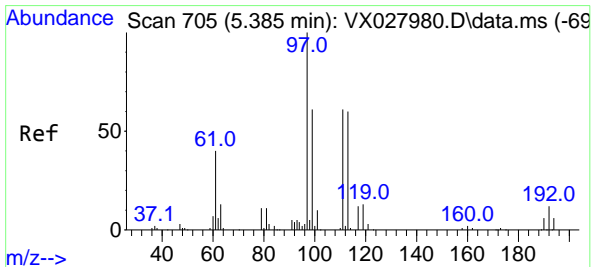
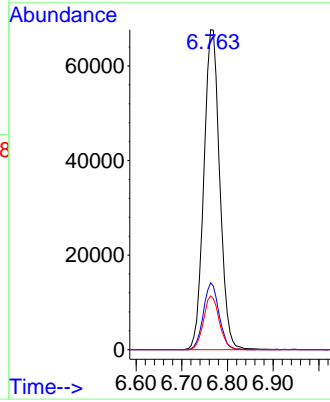
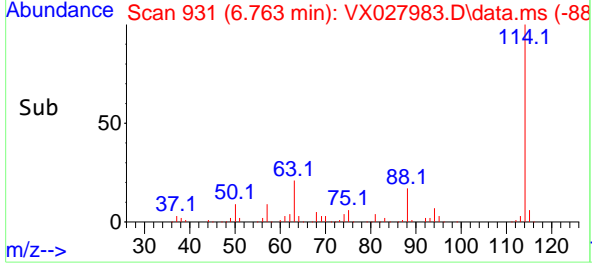
Tgt Ion:114 Resp: 16364
 Ion Ratio Lower Upper
 114 100
 63 20.9 0.0 36.8
 88 16.8 0.0 32.4

Manual Integrations

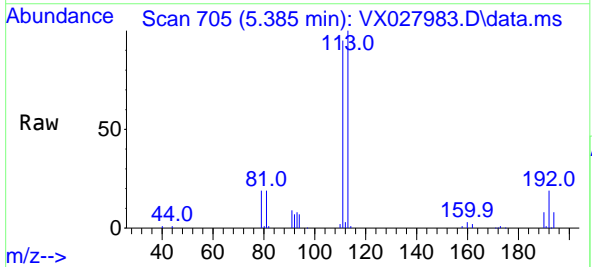
APPROVED

Reviewed By :John Carlone 04/06/2022

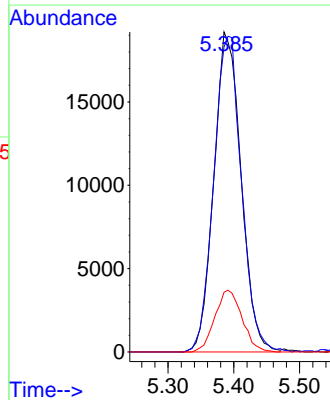
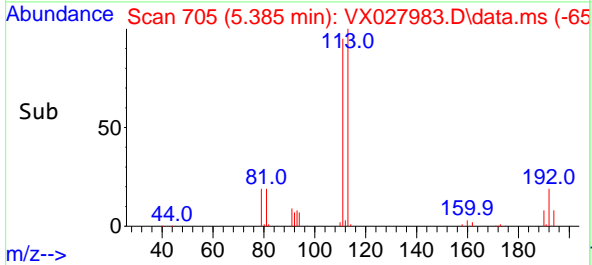
Supervised By :Mahesh Dadoda 04/06/2022

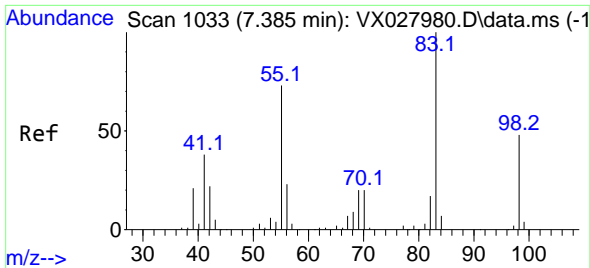


#35
 Dibromofluoromethane
 Concen: 49.835 ug/l
 RT: 5.385 min Scan# 705
 Delta R.T. 0.000 min
 Lab File: VX027983.D
 Acq: 05 Apr 2022 15:45



Tgt Ion:113 Resp: 55188
 Ion Ratio Lower Upper
 113 100
 111 100.8 82.8 124.2
 192 19.3 16.9 25.3





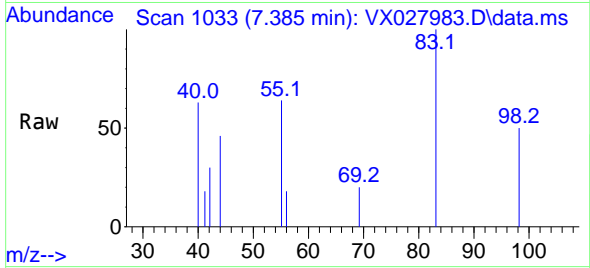
#39
 Methylcyclohexane
 Concen: 0.252 ug/l
 RT: 7.385 min Scan# 1033
 Delta R.T. -0.000 min
 Lab File: VX027983.D
 Acq: 05 Apr 2022 15:45

Instrument :

MSVOA_X

ClientSampleId :

IBLK

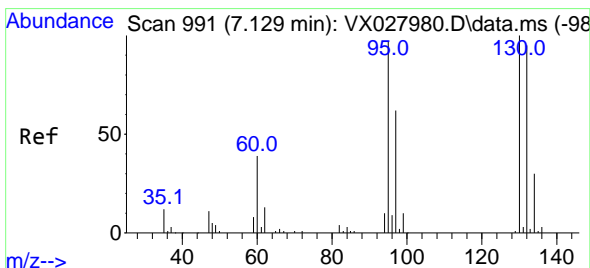
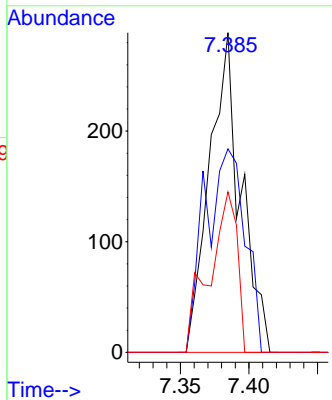
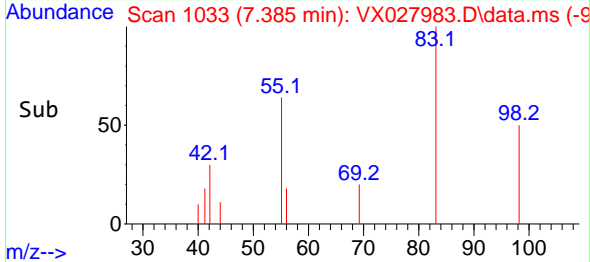


Tgt Ion: 83 Resp: 459
 Ion Ratio Lower Upper
 83 100
 55 63.7 54.6 81.8
 98 50.2 37.4 56.2

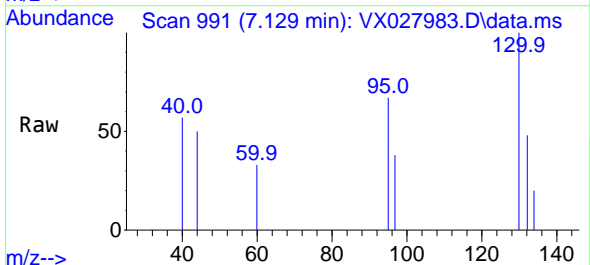
Manual Integrations

APPROVED

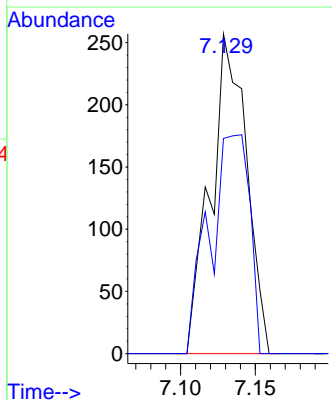
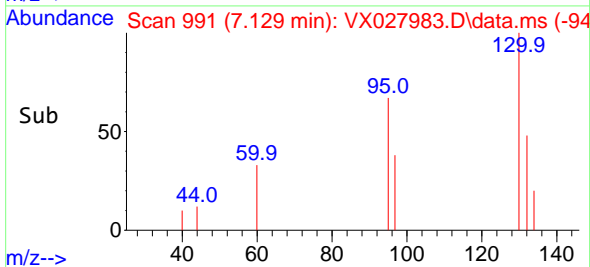
Reviewed By :John Carlone 04/06/2022
 Supervised By :Mahesh Dadoda 04/06/2022

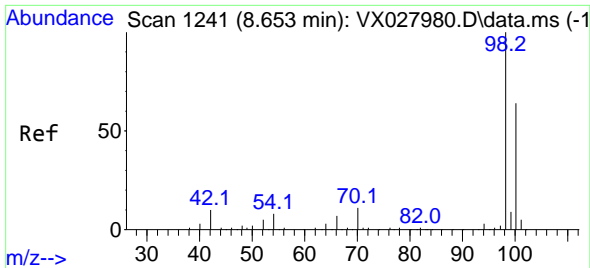


#44
 Trichloroethene
 Concen: 0.342 ug/l
 RT: 7.129 min Scan# 991
 Delta R.T. -0.000 min
 Lab File: VX027983.D
 Acq: 05 Apr 2022 15:45



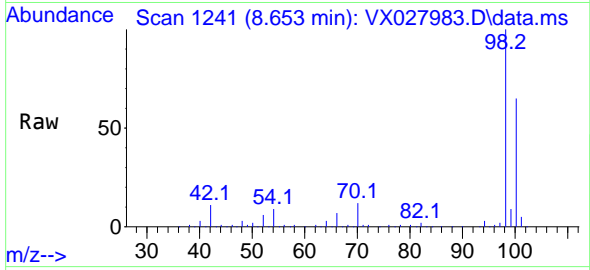
Tgt Ion:130 Resp: 427
 Ion Ratio Lower Upper
 130 100
 95 67.3 0.0 188.8





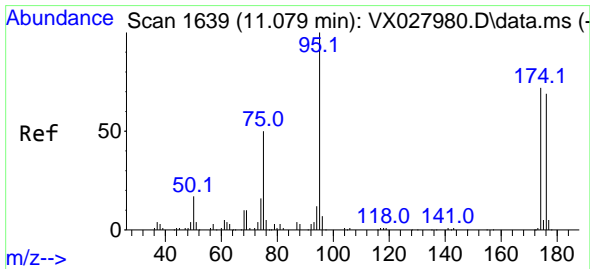
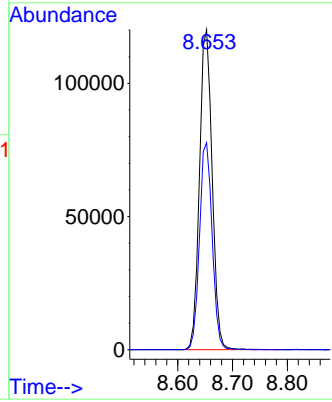
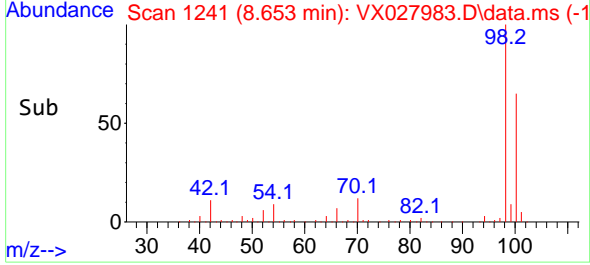
#50
 Toluene-d8
 Concen: 47.741 ug/l
 RT: 8.653 min Scan# 11
 Delta R.T. -0.000 min
 Lab File: VX027983.D
 Acq: 05 Apr 2022 15:45

Instrument : MSVOA_X
 ClientSampleId : IBLK

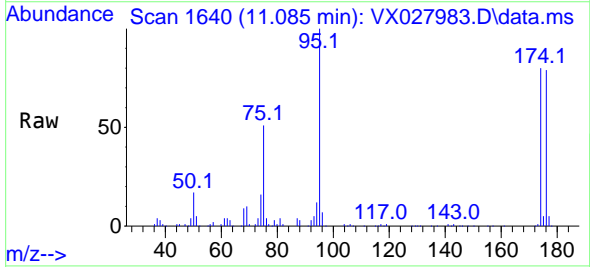


Tgt Ion: 98 Resp: 193164
 Ion Ratio Lower Upper
 98 100
 100 64.6 52.6 78.8

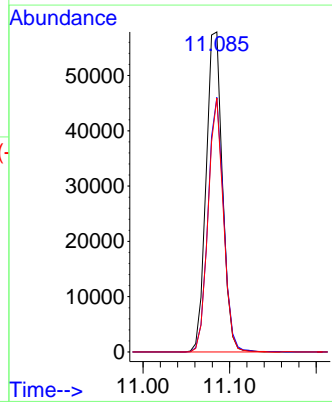
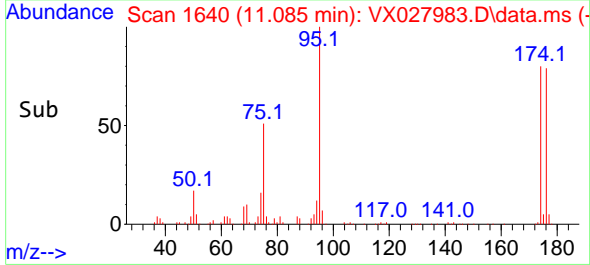
Manual Integrations
APPROVED
 Reviewed By :John Carlone 04/06/2022
 Supervised By :Mahesh Dadoda 04/06/2022

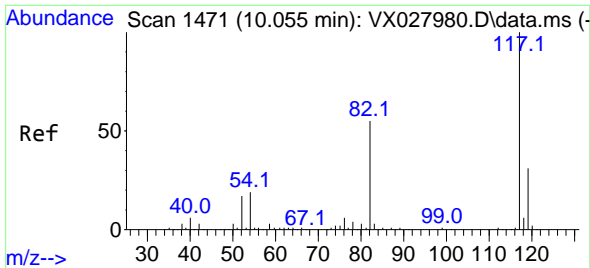


#62
 4-Bromofluorobenzene
 Concen: 47.641 ug/l
 RT: 11.085 min Scan# 1640
 Delta R.T. 0.006 min
 Lab File: VX027983.D
 Acq: 05 Apr 2022 15:45



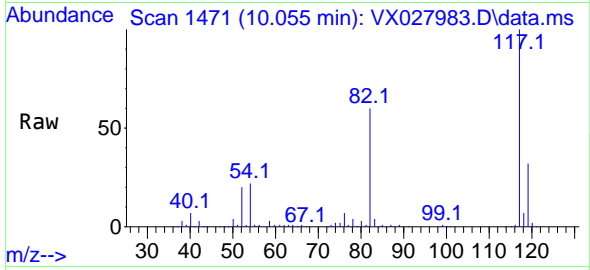
Tgt Ion: 95 Resp: 75802
 Ion Ratio Lower Upper
 95 100
 174 76.2 0.0 163.0
 176 74.1 0.0 155.0





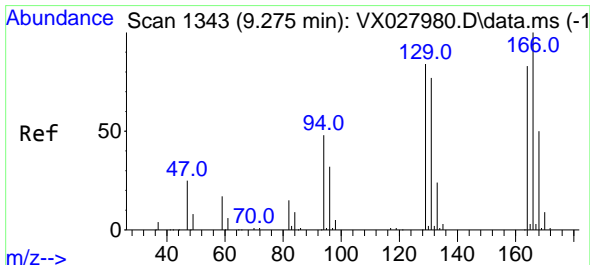
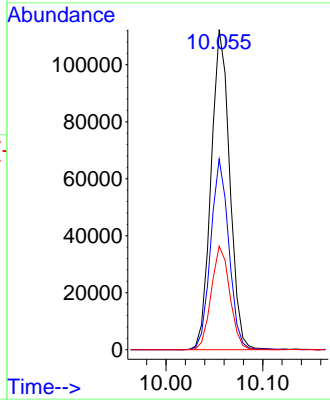
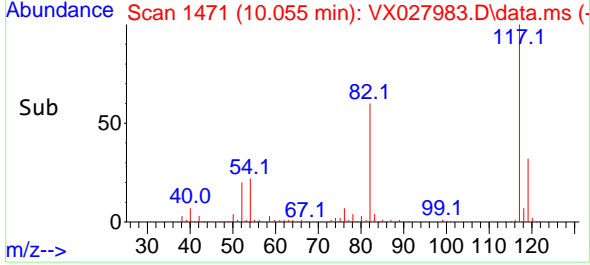
#63
 Chlorobenzene-d5
 Concen: 50.000 ug/l
 RT: 10.055 min Scan# 1471
 Delta R.T. -0.000 min
 Lab File: VX027983.D
 Acq: 05 Apr 2022 15:45

Instrument : MSVOA_X
 ClientSampleId : IBLK

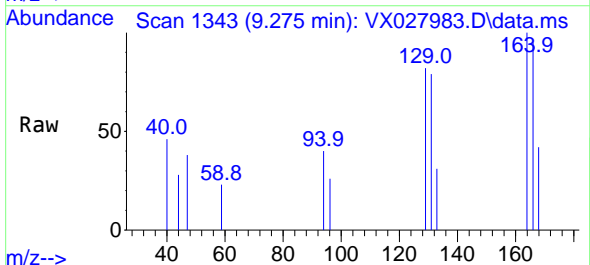


Tgt Ion:117 Resp: 15028
 Ion Ratio Lower Upper
 117 100
 82 59.5 41.8 62.8
 119 32.3 24.8 37.2

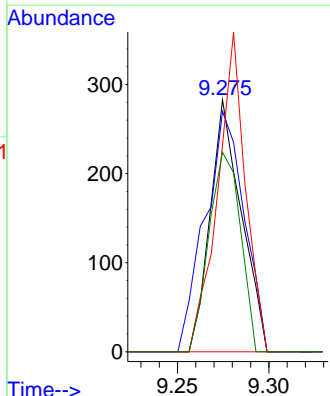
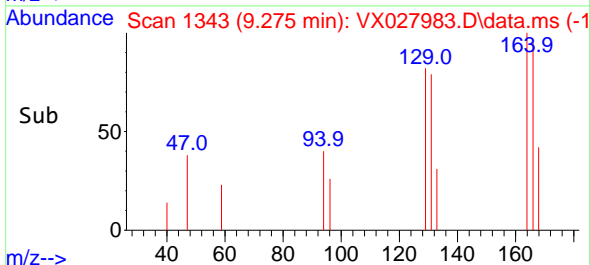
Manual Integrations
APPROVED
 Reviewed By :John Carlone 04/06/2022
 Supervised By :Mahesh Dadoda 04/06/2022

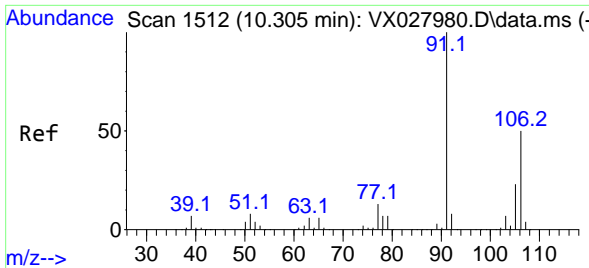


#64
 Tetrachloroethene
 Concen: 0.284 ug/l
 RT: 9.275 min Scan# 1343
 Delta R.T. -0.000 min
 Lab File: VX027983.D
 Acq: 05 Apr 2022 15:45



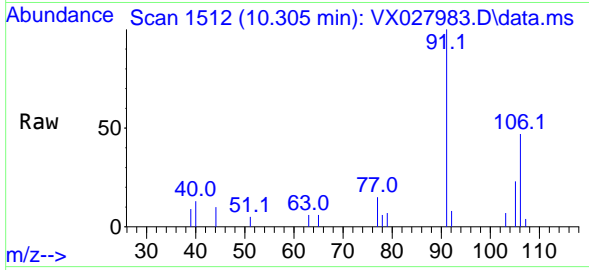
Tgt Ion:164 Resp: 336
 Ion Ratio Lower Upper
 164 100
 166 95.4 101.2 151.8#
 129 82.0 73.0 109.4
 131 79.2 74.2 111.2





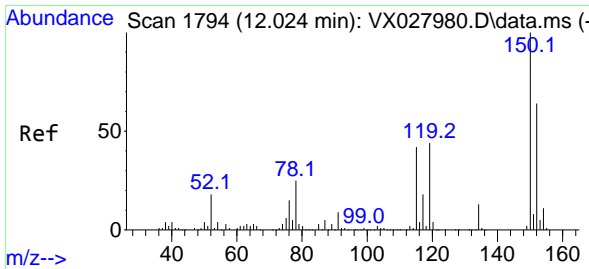
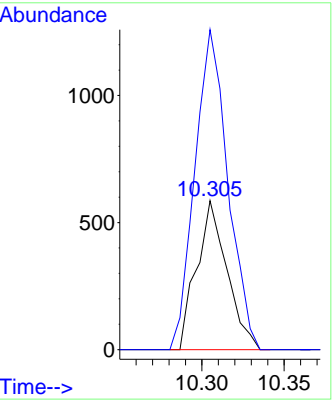
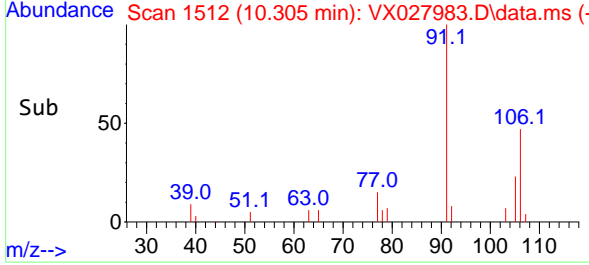
#68
 m/p-Xylenes
 Concen: 0.351 ug/l
 RT: 10.305 min Scan# 11
 Delta R.T. -0.000 min
 Lab File: VX027983.D
 Acq: 05 Apr 2022 15:45

Instrument : MSVOA_X
 ClientSampleId : IBLK

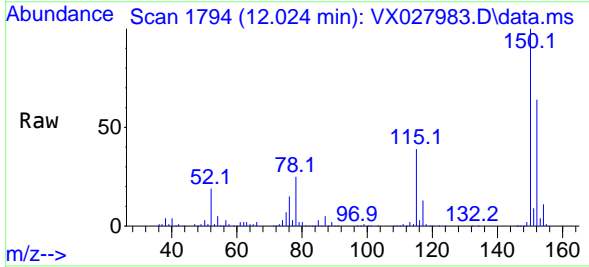


Tgt Ion:106 Resp: 750
 Ion Ratio Lower Upper
 106 100
 91 234.3 160.4 240.6

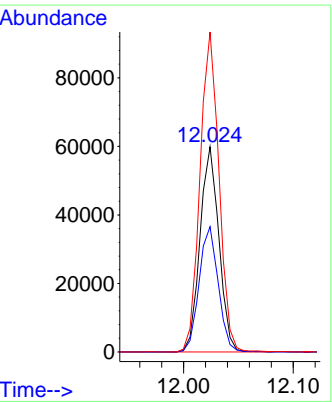
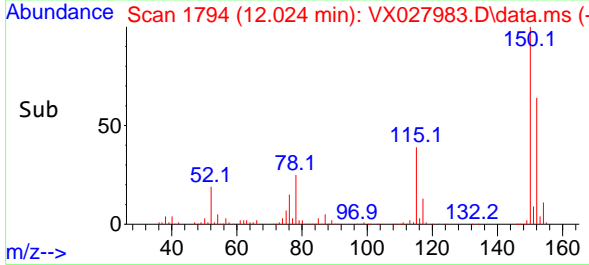
Manual Integrations
APPROVED
 Reviewed By :John Carlone 04/06/2022
 Supervised By :Mahesh Dadoda 04/06/2022

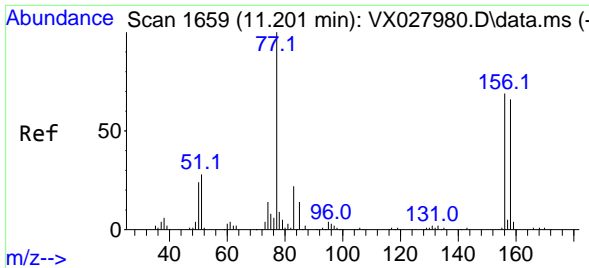


#72
 1,4-Dichlorobenzene-d4
 Concen: 50.000 ug/l
 RT: 12.024 min Scan# 1794
 Delta R.T. 0.000 min
 Lab File: VX027983.D
 Acq: 05 Apr 2022 15:45



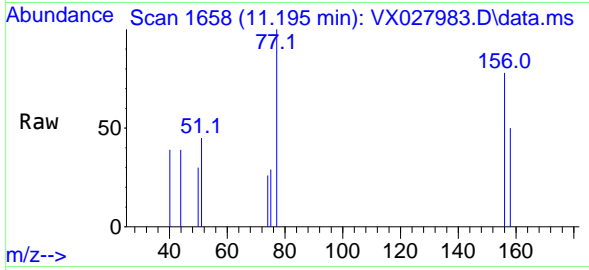
Tgt Ion:152 Resp: 71704
 Ion Ratio Lower Upper
 152 100
 115 61.8 37.5 112.7
 150 156.6 0.0 338.2





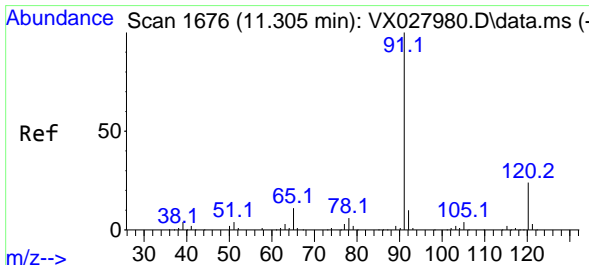
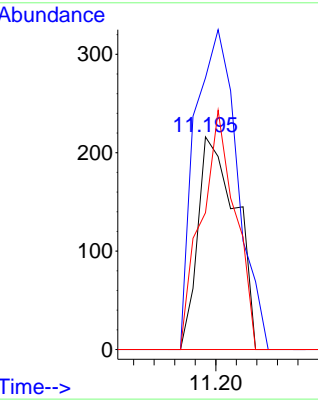
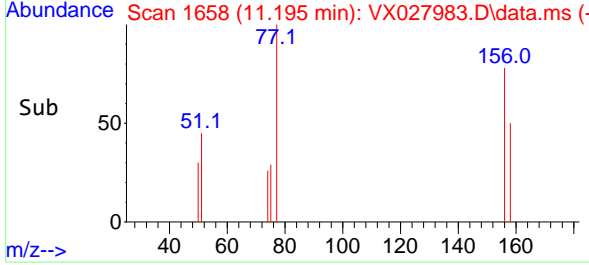
#77
 Bromobenzene
 Concen: 0.213 ug/l
 RT: 11.195 min Scan# 1658
 Delta R.T. -0.006 min
 Lab File: VX027983.D
 Acq: 05 Apr 2022 15:45

Instrument : MSVOA_X
 ClientSampleId : IBLK

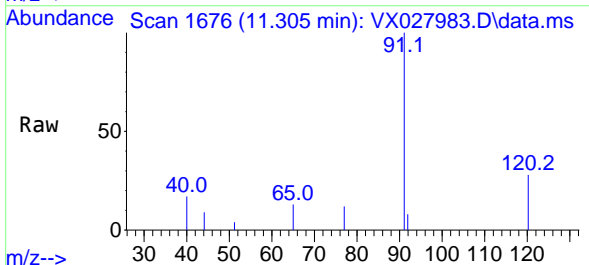


Tgt Ion: 156 Resp: 279
 Ion Ratio Lower Upper
 156 100
 77 167.7 78.5 235.3
 158 100.0 50.2 150.7

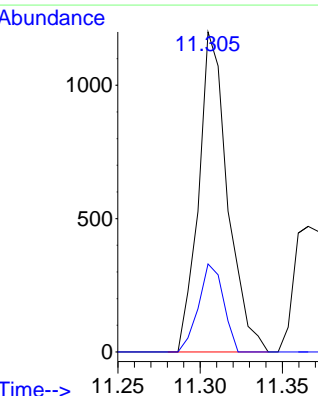
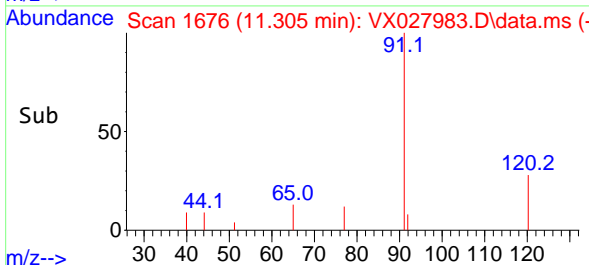
Manual Integrations
APPROVED
 Reviewed By : John Carlone 04/06/2022
 Supervised By : Mahesh Dadoda 04/06/2022

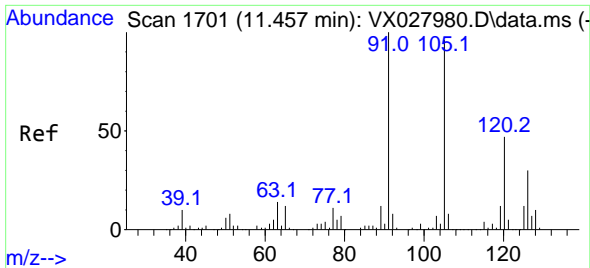


#78
 n-propylbenzene
 Concen: 0.257 ug/l
 RT: 11.305 min Scan# 1676
 Delta R.T. -0.000 min
 Lab File: VX027983.D
 Acq: 05 Apr 2022 15:45



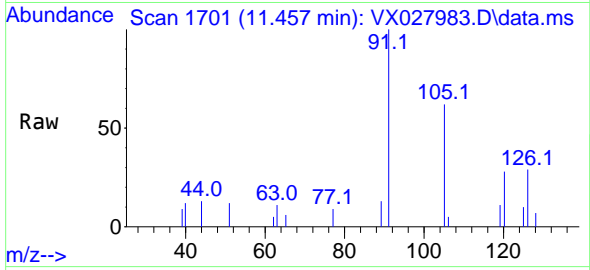
Tgt Ion: 91 Resp: 1469
 Ion Ratio Lower Upper
 91 100
 120 23.6 11.6 34.8





#82
 4-Chlorotoluene
 Concen: 0.309 ug/l
 RT: 11.457 min Scan# 1701
 Delta R.T. 0.000 min
 Lab File: VX027983.D
 Acq: 05 Apr 2022 15:45

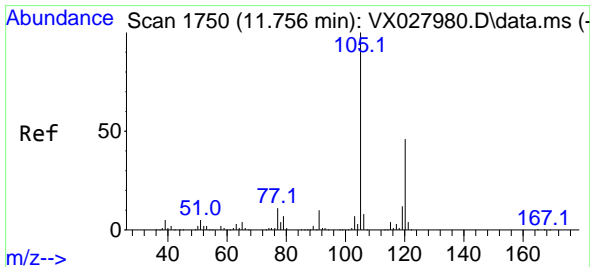
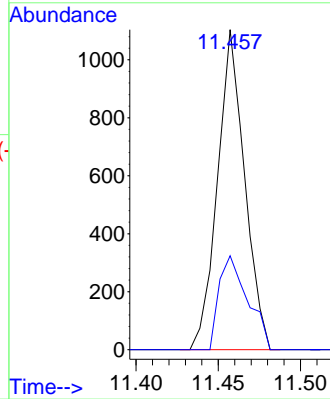
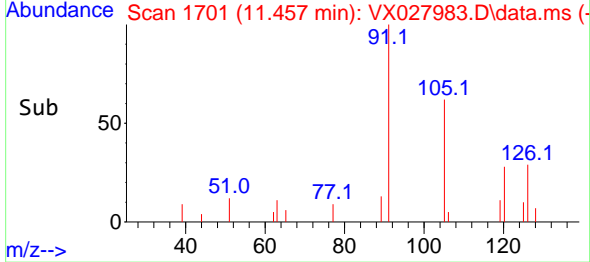
Instrument : MSVOA_X
 ClientSampleId : IBLK



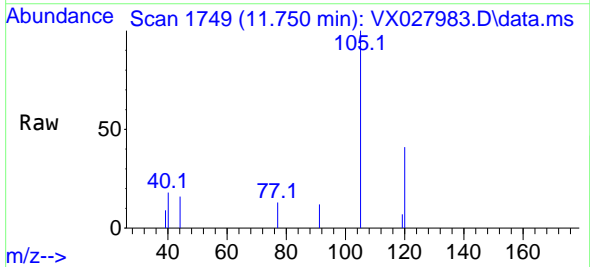
Tgt Ion: 91 Resp: 126
 Ion Ratio Lower Upper
 91 100
 126 31.1 14.9 44.5

Manual Integrations
 APPROVED

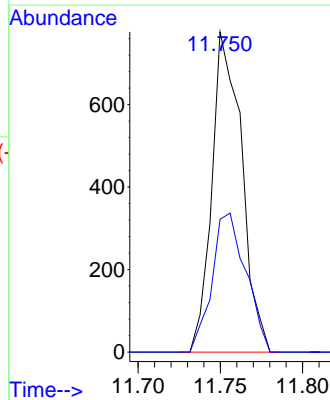
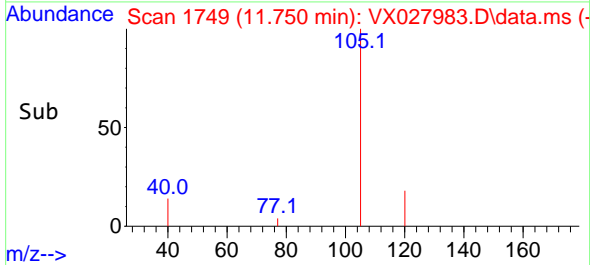
Reviewed By :John Carlone 04/06/2022
 Supervised By :Mahesh Dadoda 04/06/2022

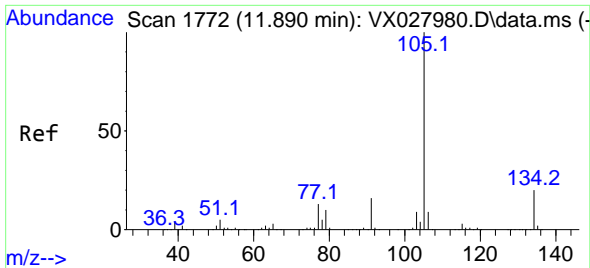


#84
 1,2,4-Trimethylbenzene
 Concen: 0.224 ug/l
 RT: 11.750 min Scan# 1749
 Delta R.T. -0.006 min
 Lab File: VX027983.D
 Acq: 05 Apr 2022 15:45



Tgt Ion:105 Resp: 975
 Ion Ratio Lower Upper
 105 100
 120 49.4 22.6 67.8





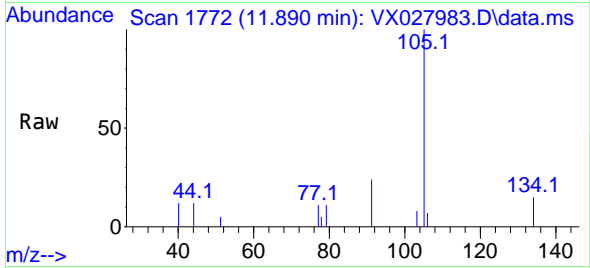
#85
 sec-Butylbenzene
 Concen: 0.237 ug/l
 RT: 11.890 min Scan# 1772
 Delta R.T. 0.000 min
 Lab File: VX027983.D
 Acq: 05 Apr 2022 15:45

Instrument :

MSVOA_X

ClientSampleId :

IBLK



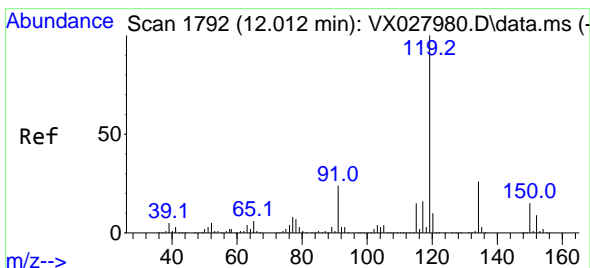
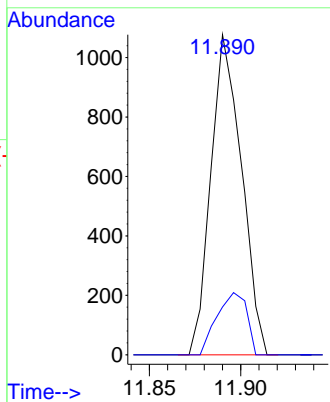
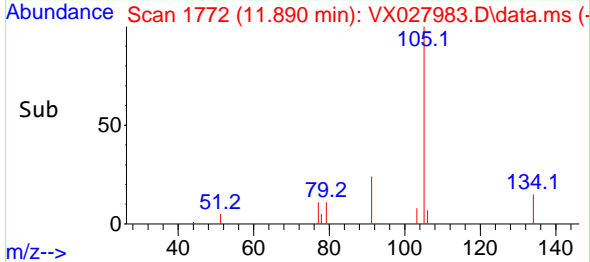
Tgt Ion:105 Resp: 125
 Ion Ratio Lower Upper
 105 100
 134 18.9 10.2 30.4

Manual Integrations

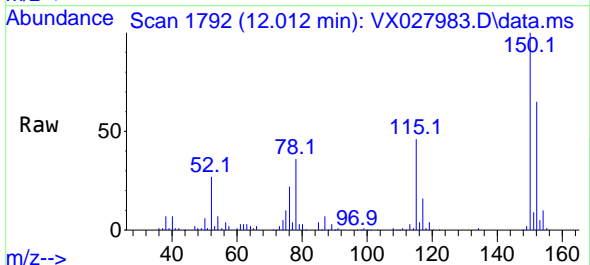
APPROVED

Reviewed By :John Carlone 04/06/2022

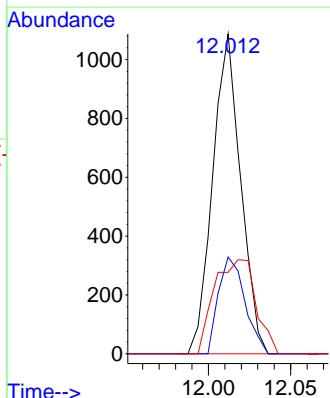
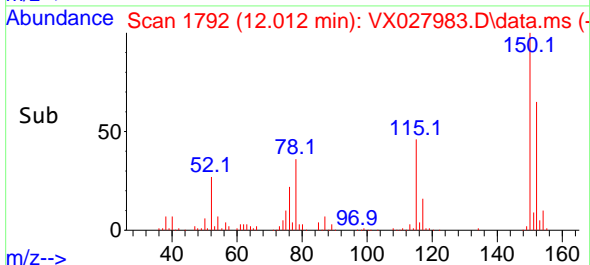
Supervised By :Mahesh Dadoda 04/06/2022

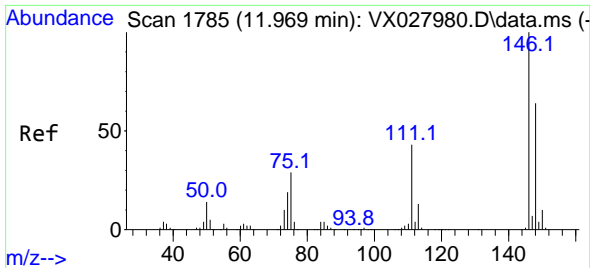


#86
 p-Isopropyltoluene
 Concen: 0.286 ug/l
 RT: 12.012 min Scan# 1792
 Delta R.T. -0.000 min
 Lab File: VX027983.D
 Acq: 05 Apr 2022 15:45



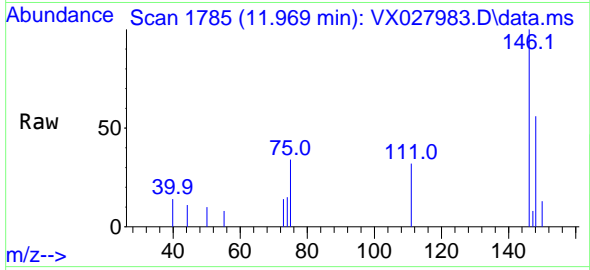
Tgt Ion:119 Resp: 1286
 Ion Ratio Lower Upper
 119 100
 134 28.5 13.0 39.0
 91 43.7 11.3 33.9#





#87
 1,3-Dichlorobenzene
 Concen: 0.388 ug/l
 RT: 11.969 min Scan# 1785
 Delta R.T. 0.000 min
 Lab File: VX027983.D
 Acq: 05 Apr 2022 15:45

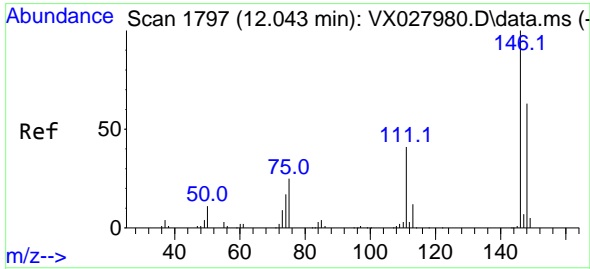
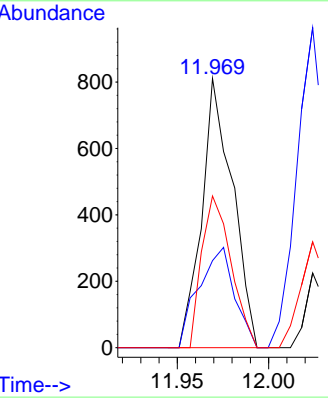
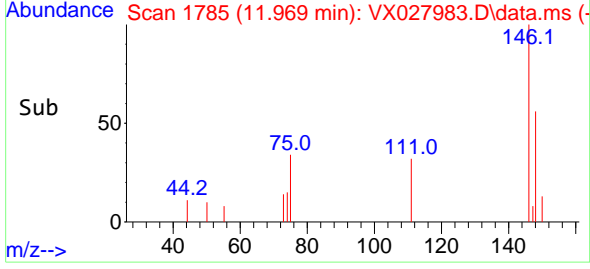
Instrument : MSVOA_X
 ClientSampleId : BLK



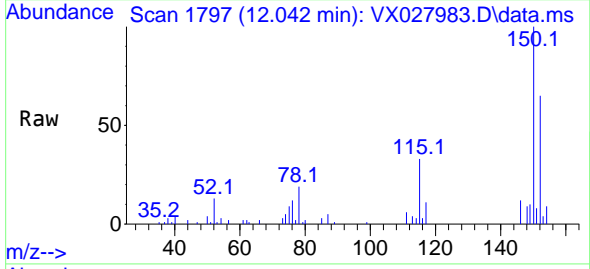
Tgt Ion:146 Resp: 950

Ion	Ratio	Lower	Upper
146	100		
111	43.4	19.7	59.1
148	53.9	31.6	94.7

Manual Integrations
APPROVED
 Reviewed By :John Carlone 04/06/2022
 Supervised By :Mahesh Dadoda 04/06/2022

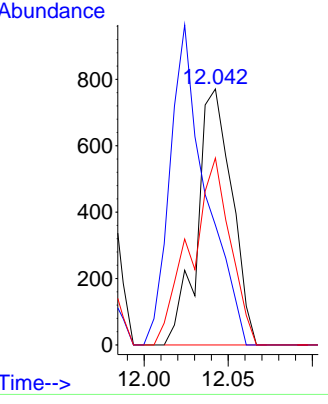
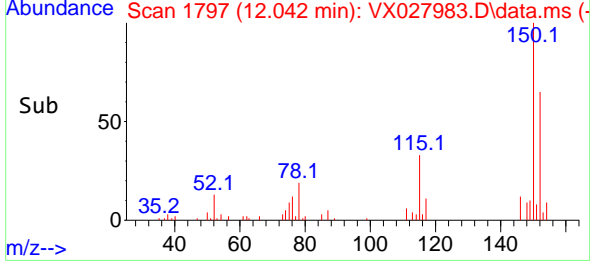


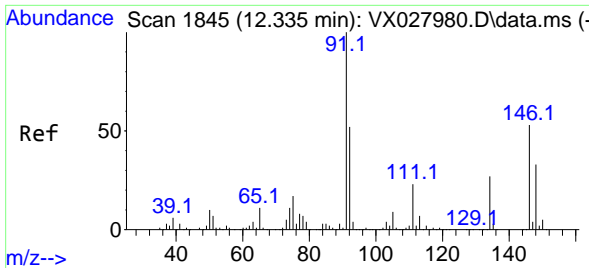
#88
 1,4-Dichlorobenzene
 Concen: 0.445 ug/l m
 RT: 12.042 min Scan# 1797
 Delta R.T. -0.001 min
 Lab File: VX027983.D
 Acq: 05 Apr 2022 15:45



Tgt Ion:146 Resp: 1100

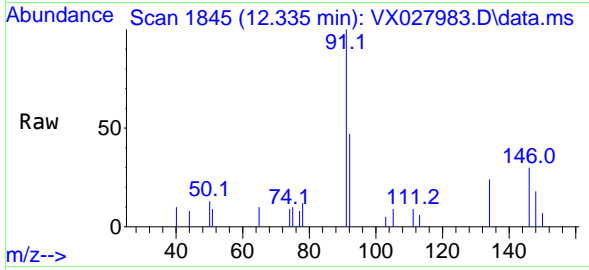
Ion	Ratio	Lower	Upper
146	100		
111	37.5	19.2	57.6
148	46.5	32.3	96.9





#89
 n-Butylbenzene
 Concen: 0.401 ug/l
 RT: 12.335 min Scan# 1845
 Delta R.T. 0.000 min
 Lab File: VX027983.D
 Acq: 05 Apr 2022 15:45

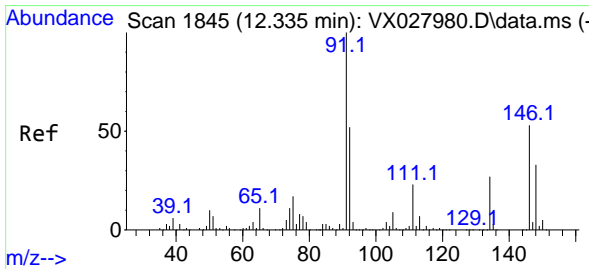
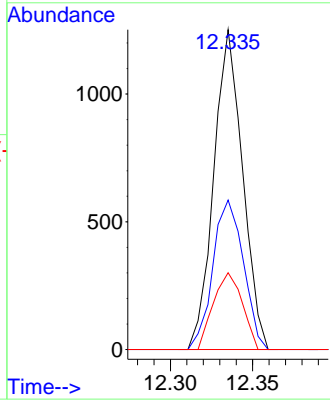
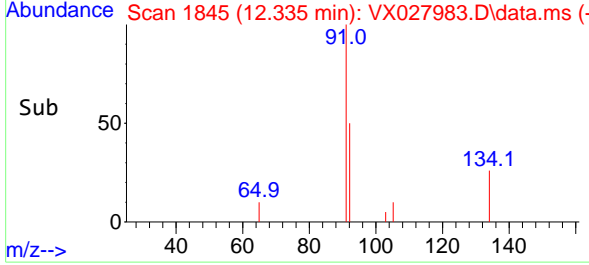
Instrument : MSVOA_X
 ClientSampleId : IBLK



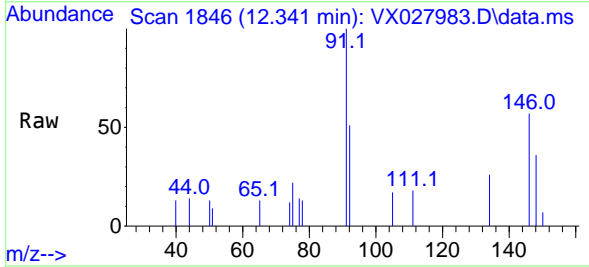
Tgt Ion: 91 Resp: 1520
 Ion Ratio Lower Upper
 91 100
 92 49.5 27.8 83.3
 134 24.0 13.3 39.8

Manual Integrations
APPROVED

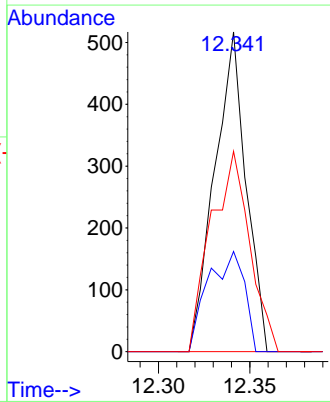
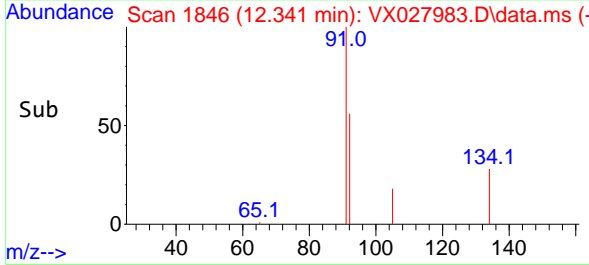
Reviewed By :John Carlone 04/06/2022
 Supervised By :Mahesh Dadoda 04/06/2022

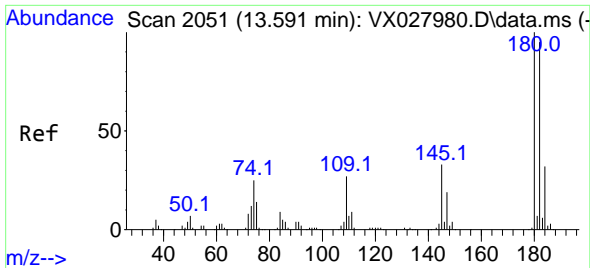


#91
 1,2-Dichlorobenzene
 Concen: 0.259 ug/l
 RT: 12.341 min Scan# 1846
 Delta R.T. 0.006 min
 Lab File: VX027983.D
 Acq: 05 Apr 2022 15:45



Tgt Ion:146 Resp: 618
 Ion Ratio Lower Upper
 146 100
 111 36.1 21.0 63.0
 148 77.0 32.6 97.7





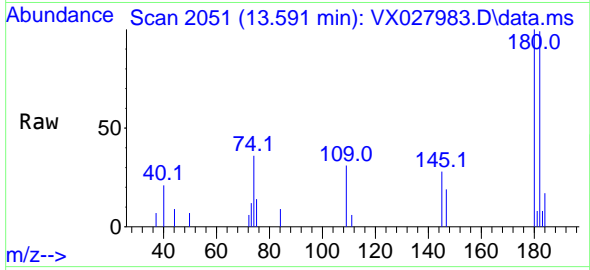
#93
 1,2,4-Trichlorobenzene
 Concen: 0.690 ug/l
 RT: 13.591 min Scan# 2051
 Delta R.T. -0.000 min
 Lab File: VX027983.D
 Acq: 05 Apr 2022 15:45

Instrument :

MSVOA_X

ClientSampleId :

IBLK



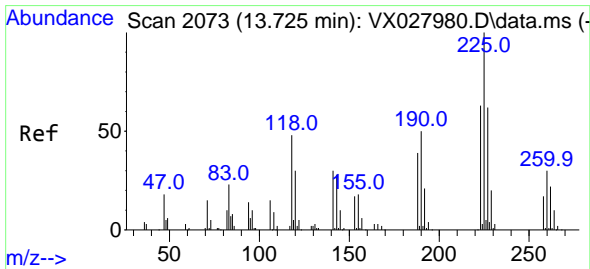
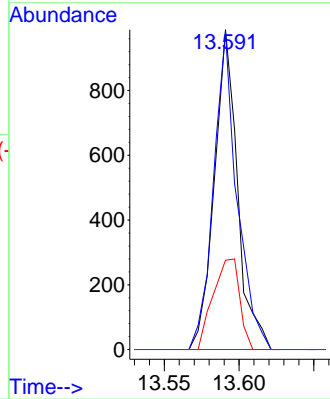
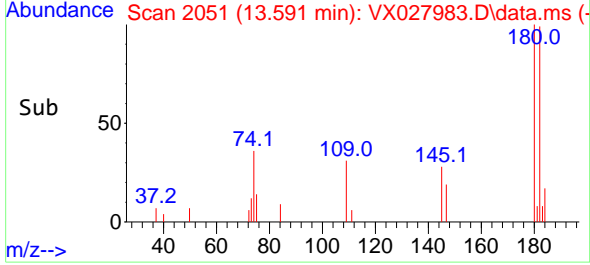
Tgt Ion:180 Resp: 1060
 Ion Ratio Lower Upper
 180 100
 182 100.9 47.7 143.1
 145 32.4 15.2 45.5

Manual Integrations

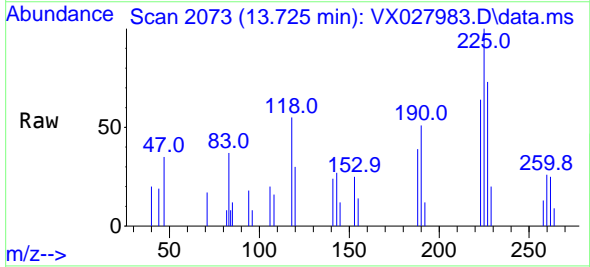
APPROVED

Reviewed By :John Carlone 04/06/2022

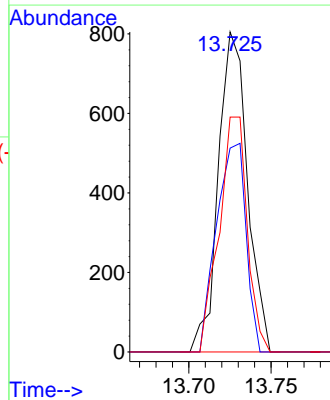
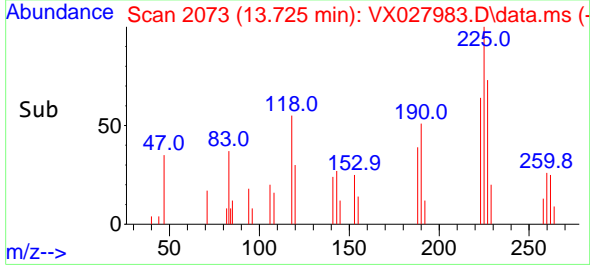
Supervised By :Mahesh Dadoda 04/06/2022

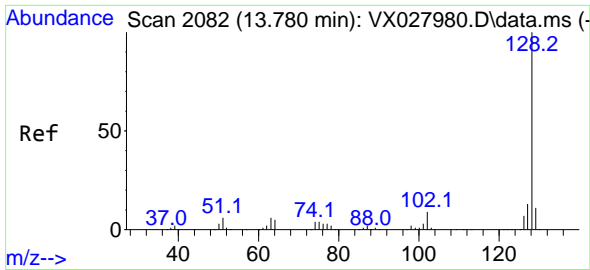


#94
 Hexachlorobutadiene
 Concen: 1.346 ug/l
 RT: 13.725 min Scan# 2073
 Delta R.T. 0.000 min
 Lab File: VX027983.D
 Acq: 05 Apr 2022 15:45



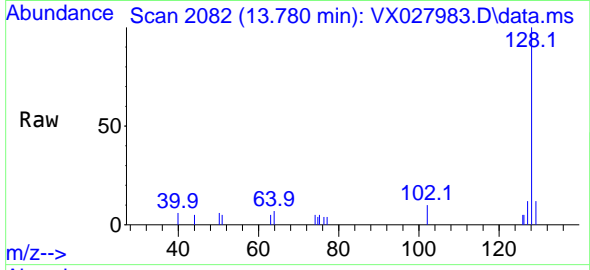
Tgt Ion:225 Resp: 993
 Ion Ratio Lower Upper
 225 100
 223 65.8 34.2 102.5
 227 71.0 33.9 101.7





#95
 Naphthalene
 Concen: 0.564 ug/l
 RT: 13.780 min Scan# 2082
 Delta R.T. -0.000 min
 Lab File: VX027983.D
 Acq: 05 Apr 2022 15:45

Instrument : MSVOA_X
 ClientSampleId : IBLK

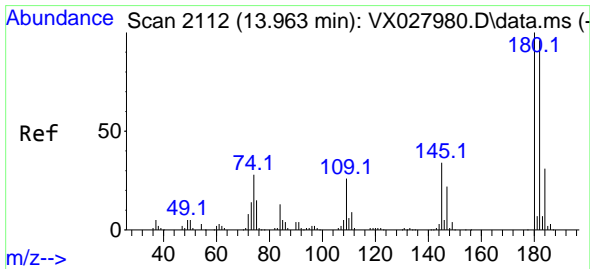
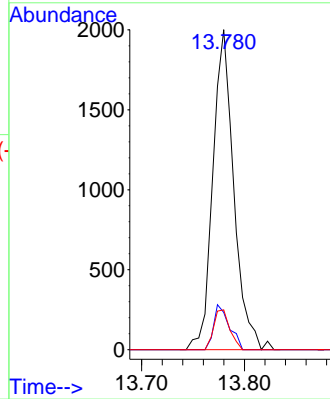
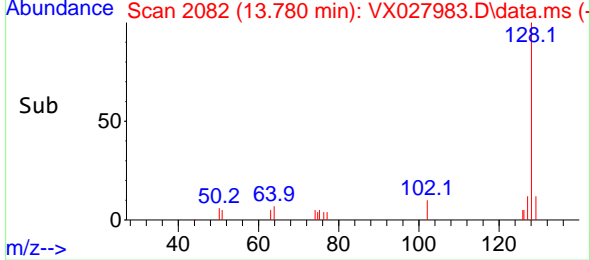


Tgt Ion:128 Resp: 2834

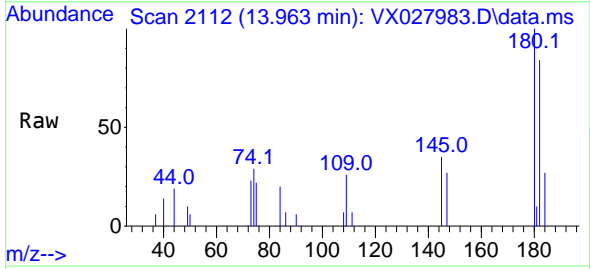
Ion	Ratio	Lower	Upper
128	100		
127	10.4	10.2	15.4
129	9.6	8.7	13.1

Manual Integrations
 APPROVED

Reviewed By :John Carlone 04/06/2022
 Supervised By :Mahesh Dadoda 04/06/2022



#96
 1,2,3-Trichlorobenzene
 Concen: 0.714 ug/l
 RT: 13.963 min Scan# 2112
 Delta R.T. -0.000 min
 Lab File: VX027983.D
 Acq: 05 Apr 2022 15:45



Tgt Ion:180 Resp: 1077

Ion	Ratio	Lower	Upper
180	100		
182	86.8	50.0	149.8
145	30.5	16.2	48.5

