

Data Path : Z:\VOASRV\HPCHEM1\MSVOA X\DATA\VX040820\
 Data File : VX015575.D
 Acq On : 08 Apr 2020 17:32
 Operator : JC/SP
 Sample : L2190-19
 Misc : 5.0mL/MSVOA X/WATER
 ALS Vial : 20 Sample Multiplier: 1

Instrument :
 MSVOA_X
 ClientSampleId :
 ST006MW012-200406

Quant Time: Apr 09 06:23:35 2020
 Quant Method : Z:\VOASRV\HPCHEM1\MSVOA_X\METHOD\82X032720W.M
 Quant Title : SW846 8260
 QLast Update : Fri Mar 27 09:35:51 2020
 Response via : Initial Calibration

Internal Standards	R.T.	QIon	Response	Conc	Units	Dev(Min)
1) Pentafluorobenzene	5.63	168	1059522	50.00	ug/l	0.00
34) 1,4-Difluorobenzene	6.84	114	1659111	50.00	ug/l	0.00
63) Chlorobenzene-d5	10.10	117	1637007	50.00	ug/l	0.00
72) 1,4-Dichlorobenzene-d4	12.06	152	913686	50.00	ug/l	0.00

System Monitoring Compounds

33) 1,2-Dichloroethane-d4	6.04	65	699672	46.82	ug/l	0.00
Spiked Amount	50.000		Recovery	=	93.64%	
35) Dibromofluoromethane	5.47	113	524120	49.42	ug/l	0.00
Spiked Amount	50.000		Recovery	=	98.84%	
50) Toluene-d8	8.70	98	2009409	51.46	ug/l	0.00
Spiked Amount	50.000		Recovery	=	102.92%	
62) 4-Bromofluorobenzene	11.12	95	872714	55.00	ug/l	0.00
Spiked Amount	50.000		Recovery	=	110.00%	

Target Compounds

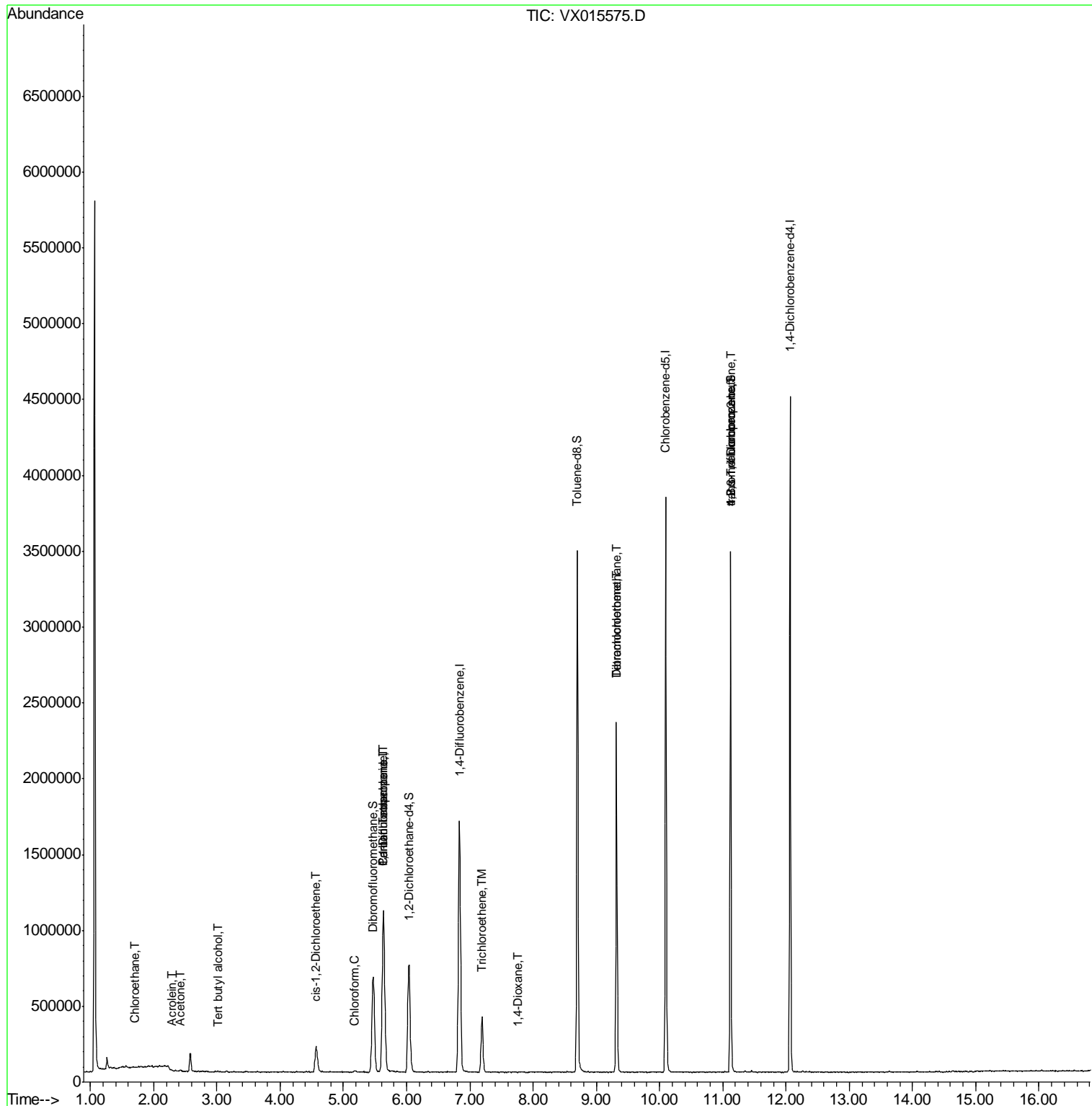
					Qvalue	
5) Bromomethane	1.64	94	1533	Below Cal	#	60
6) Chloroethane	1.70	64	1590	0.235	ug/l #	79
11) Tert butyl alcohol	3.01	59	1002	0.280	ug/l	96
13) Acrolein	2.28	56	763	0.374	ug/l #	14
16) Acetone	2.42	43	8164	1.272	ug/l	98
27) cis-1,2-Dichloroethene	4.57	96	103748	8.078	ug/l	90
30) Chloroform	5.19	83	11414	0.544	ug/l	94
36) 1,1-Dichloropropene	5.63	75	74158	4.851	ug/l #	54
38) Carbon Tetrachloride	5.63	117	100488	6.069	ug/l #	16
44) Trichloroethene	7.20	130	140793	11.529	ug/l	96
49) 1,4-Dioxane	7.76	88	637	2.035	ug/l #	67
60) Dibromochloromethane	9.32	129	407713	29.997	ug/l #	12
64) Tetrachloroethene	9.32	164	448059	36.268	ug/l	96
76) 1,2,3-Trichloropropane	11.12	75	449030	23.898	ug/l #	36
81) trans-1,4-Dichloro-2-buten	11.12	75	449030	57.343	ug/l #	10

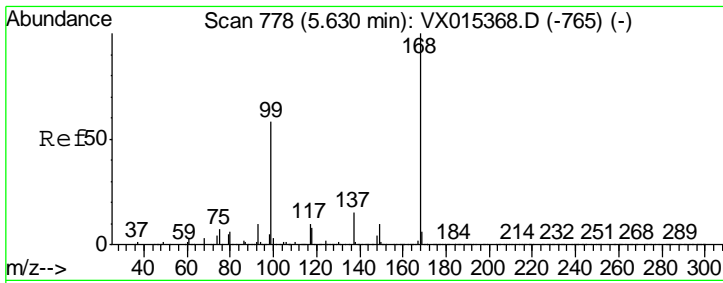
(#) = qualifier out of range (m) = manual integration (+) = signals summed

Data Path : Z:\VOASRV\HPCHEM1\MSVOA X\DATA\VX040820\
 Data File : VX015575.D
 Acq On : 08 Apr 2020 17:32
 Operator : JC/SP
 Sample : L2190-19
 Misc : 5.0mL/MSVOA X/WATER
 ALS Vial : 20 Sample Multiplier: 1

Instrument :
 MSVOA_X
Client Sampled :
 ST006MW012-200406

Quant Time: Apr 09 06:23:35 2020
 Quant Method : Z:\VOASRV\HPCHEM1\MSVOA_X\METHOD\82X032720W.M
 Quant Title : SW846 8260
 QLast Update : Fri Mar 27 09:35:51 2020
 Response via : Initial Calibration

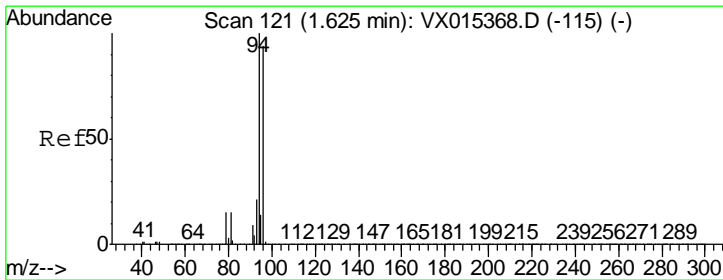
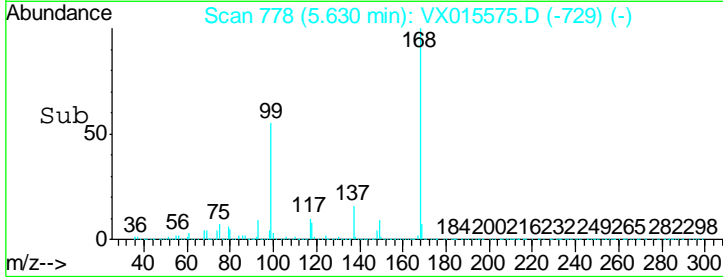
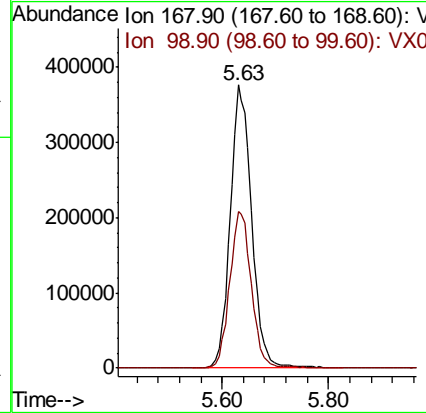
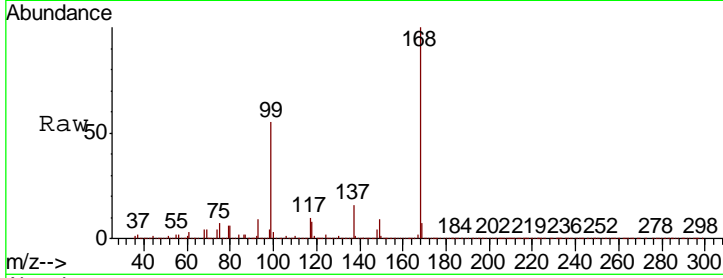




#1
 Pentafluorobenzene
 Concen: 50.000 ug/l
 RT: 5.63 min Scan# 778
 Delta R.T. -0.00 min
 Lab File: VX015575.D
 Acq: 08 Apr 2020 17:32

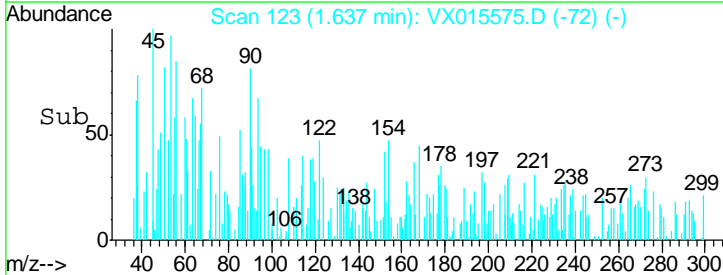
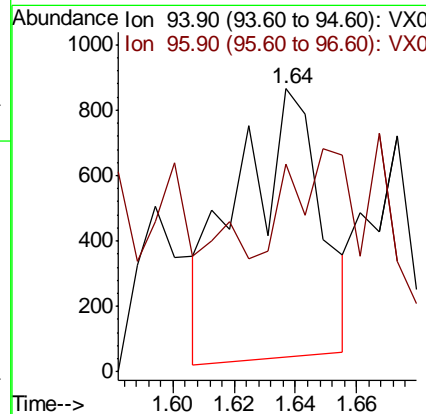
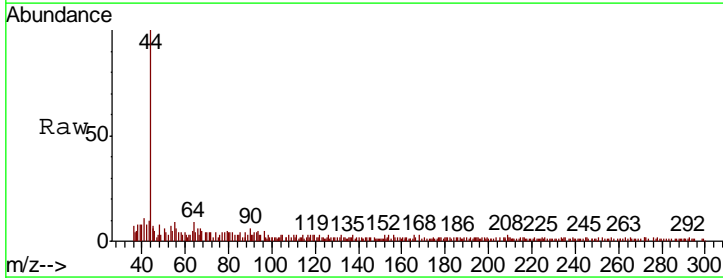
Instrument :
 MSVOA_X
 ClientSampleID :
 ST006MW012-200406

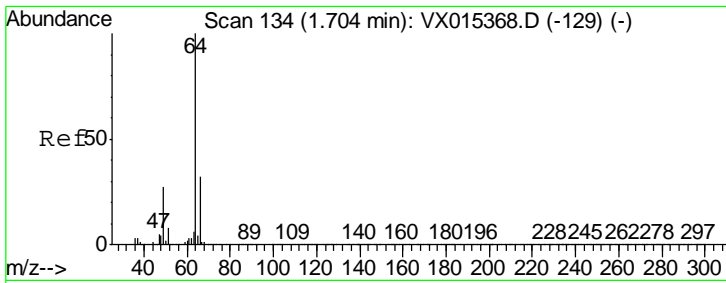
Tgt Ion: 168 Resp: 1059522
 Ion Ratio Lower Upper
 168 100
 99 55.2 46.4 69.6



#5
 Bromomethane
 Concen: Below Cal
 RT: 1.64 min Scan# 123
 Delta R.T. 0.01 min
 Lab File: VX015575.D
 Acq: 08 Apr 2020 17:32

Tgt Ion: 94 Resp: 1533
 Ion Ratio Lower Upper
 94 100
 96 55.1 74.8 112.2#

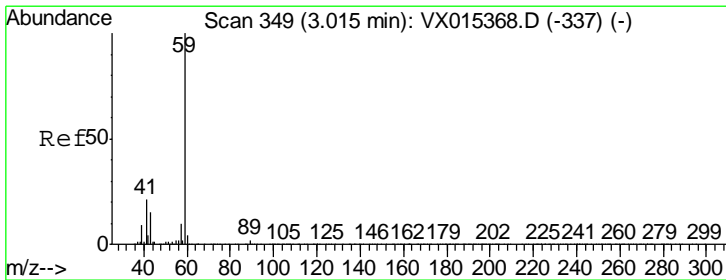
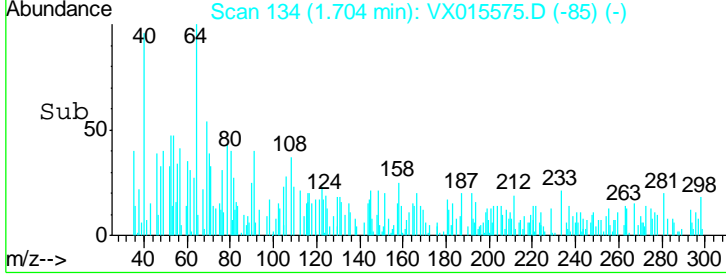
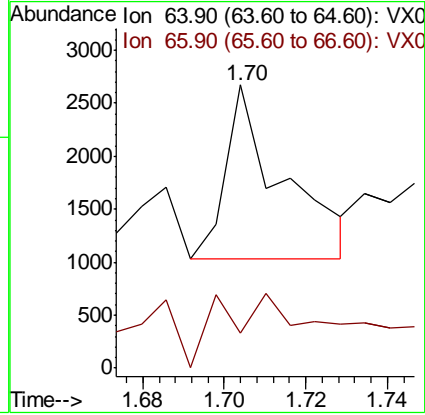
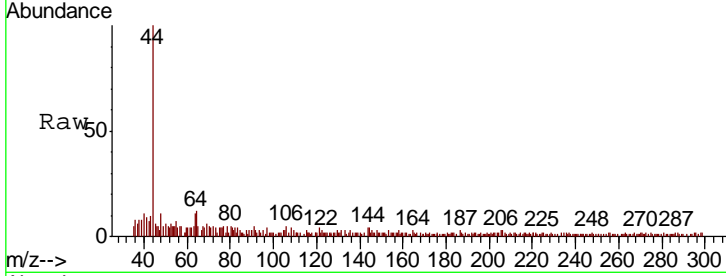




#6
 Chloroethane
 Concen: 0.235 ug/l
 RT: 1.70 min Scan# 134
 Delta R.T. -0.00 min
 Lab File: VX015575.D
 Acq: 08 Apr 2020 17:32

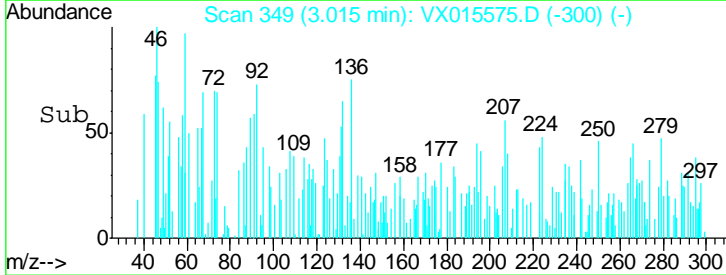
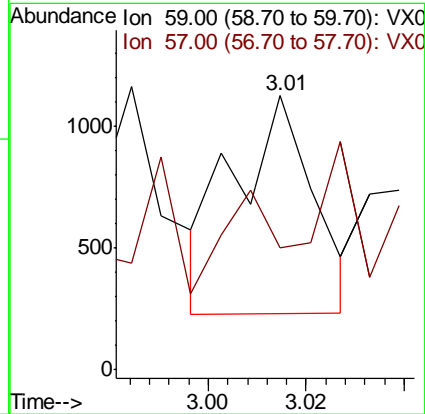
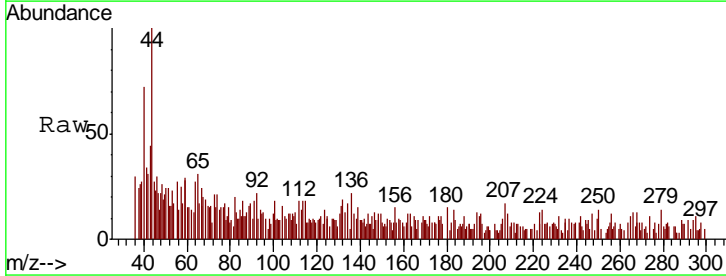
Instrument :
 MSVOA_X
ClientSampled :
 ST006MW012-200406

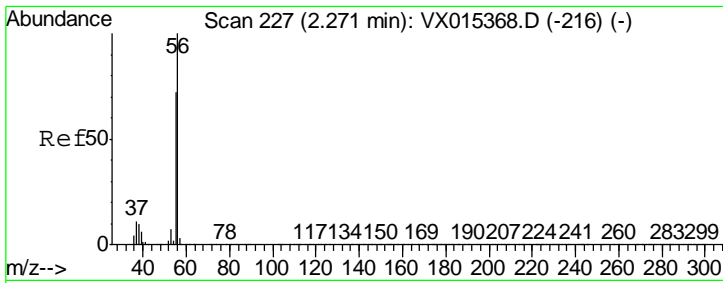
Tgt Ion	Resp	Lower	Upper
64	1590		
66	20.2	25.4	38.2#



#11
 Tert butyl alcohol
 Concen: 0.280 ug/l
 RT: 3.01 min Scan# 349
 Delta R.T. -0.00 min
 Lab File: VX015575.D
 Acq: 08 Apr 2020 17:32

Tgt Ion	Resp	Lower	Upper
59	1002		
57	8.7	8.1	12.1

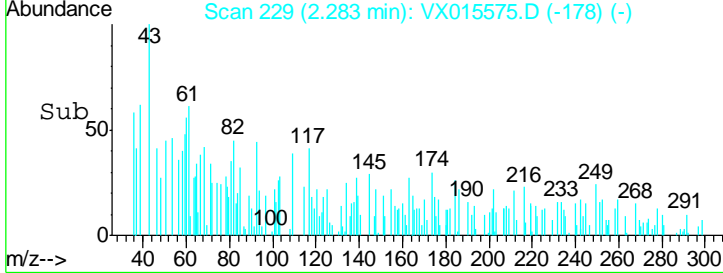
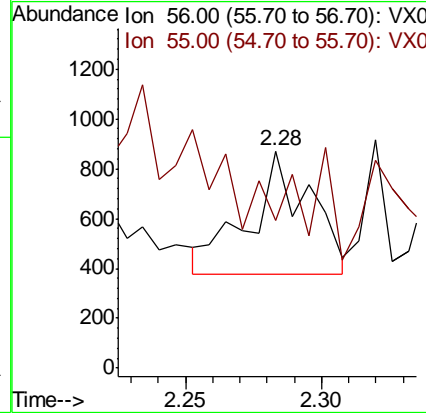
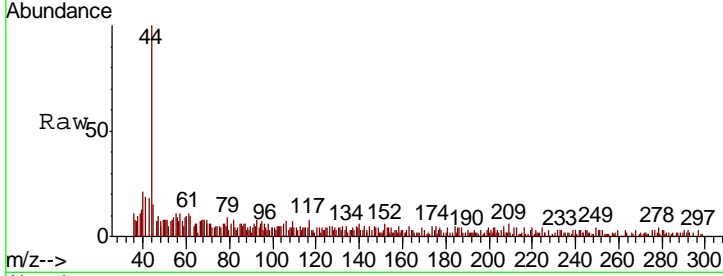




#13
 Acrolein
 Concen: 0.374 ug/l
 RT: 2.28 min Scan# 229
 Delta R.T. 0.01 min
 Lab File: VX015575.D
 Acq: 08 Apr 2020 17:32

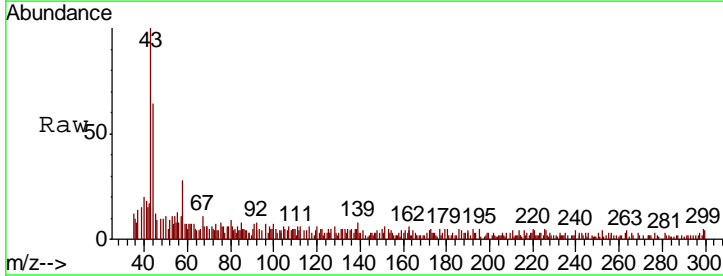
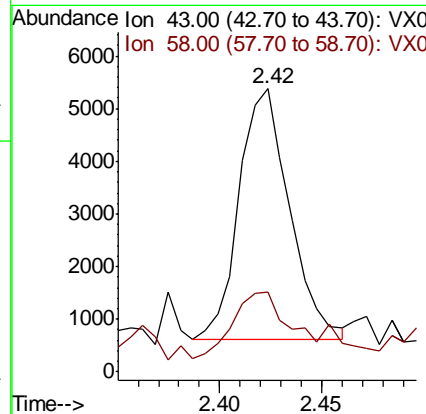
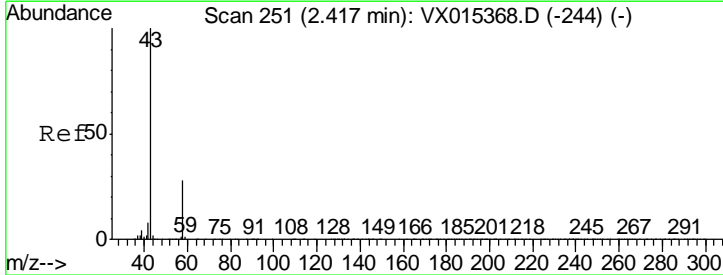
Instrument : MSVOA_X
 ClientSampled : ST006MW012-200406

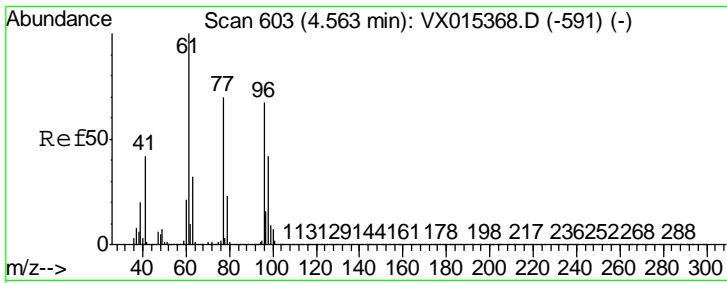
Tgt Ion	Resp	Lower	Upper
56	100		
55	0.0	57.0	85.4#



#16
 Acetone
 Concen: 1.272 ug/l
 RT: 2.42 min Scan# 252
 Delta R.T. 0.01 min
 Lab File: VX015575.D
 Acq: 08 Apr 2020 17:32

Tgt Ion	Resp	Lower	Upper
43	100		
58	26.5	22.1	33.1

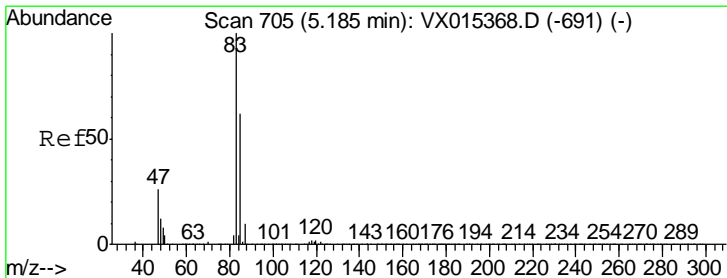
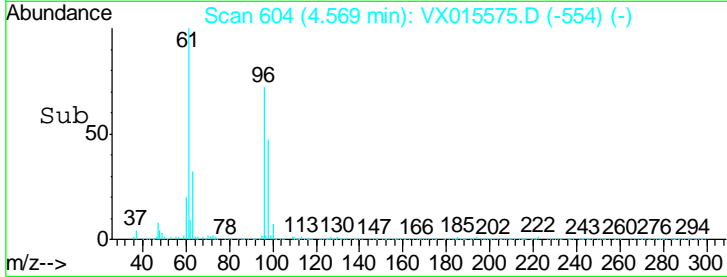
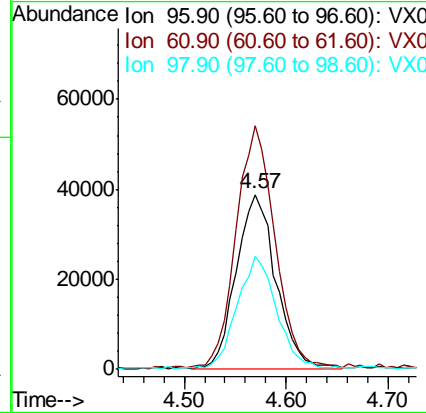
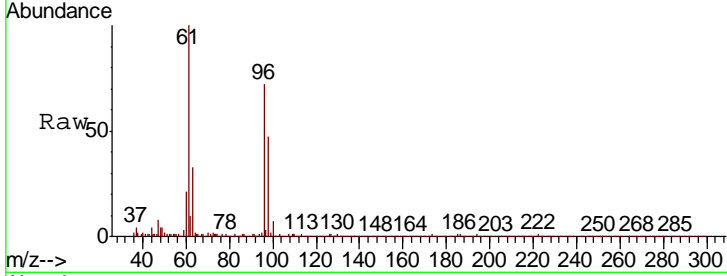




#27
 cis-1,2-Dichloroethene
 Concen: 8.078 ug/l
 RT: 4.57 min Scan# 604
 Delta R.T. 0.01 min
 Lab File: VX015575.D
 Acq: 08 Apr 2020 17:32

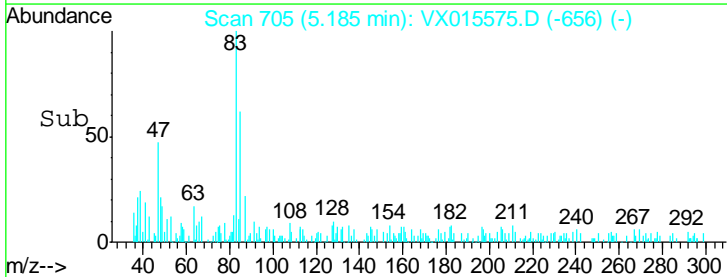
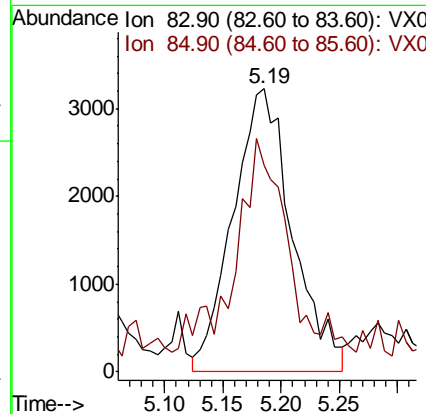
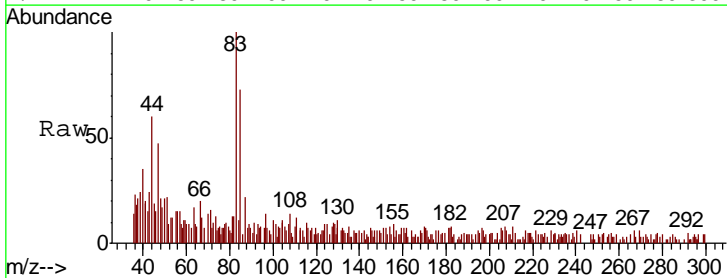
Instrument :
 MSVOA_X
ClientSampled :
 ST006MW012-200406

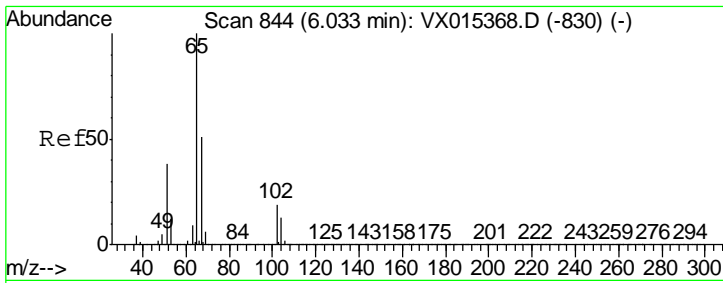
Tgt Ion	Resp	Lower	Upper
96	103748		
61	137.0	0.0	308.4
98	62.5	0.0	129.2



#30
 Chloroform
 Concen: 0.544 ug/l
 RT: 5.19 min Scan# 705
 Delta R.T. -0.00 min
 Lab File: VX015575.D
 Acq: 08 Apr 2020 17:32

Tgt Ion	Resp	Lower	Upper
83	11414		
85	66.2	49.5	74.3

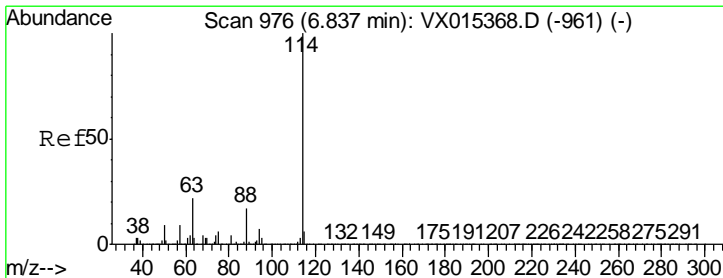
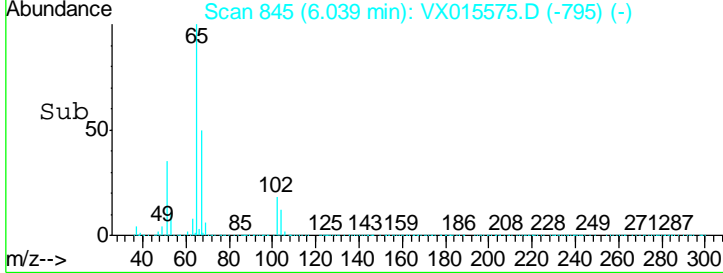
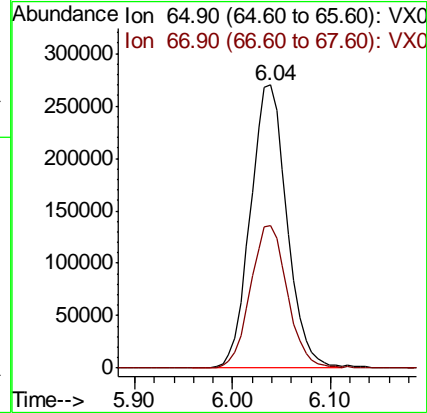
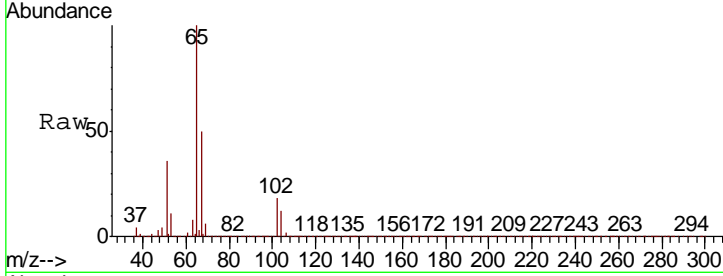




#33
 1,2-Dichloroethane-d4
 Concen: 46.821 ug/l
 RT: 6.04 min Scan# 845
 Delta R.T. 0.01 min
 Lab File: VX015575.D
 Acq: 08 Apr 2020 17:32

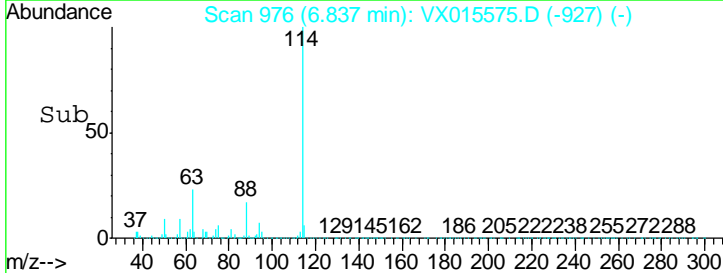
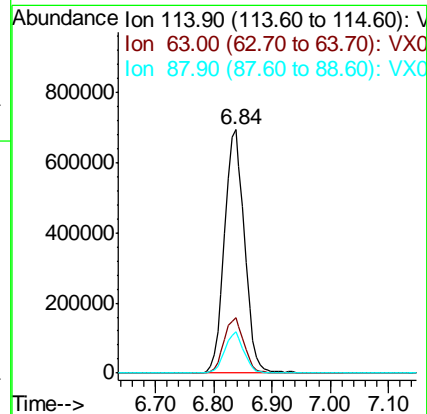
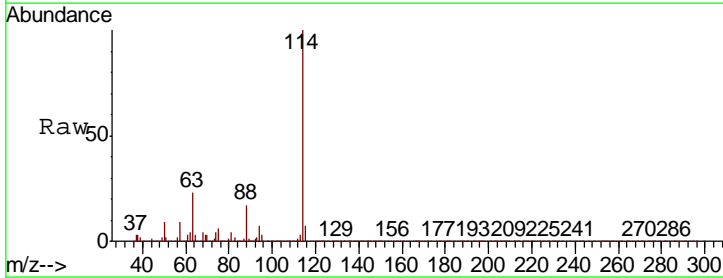
Instrument :
 MSVOA_X
 ClientSampleId :
 ST006MW012-200406

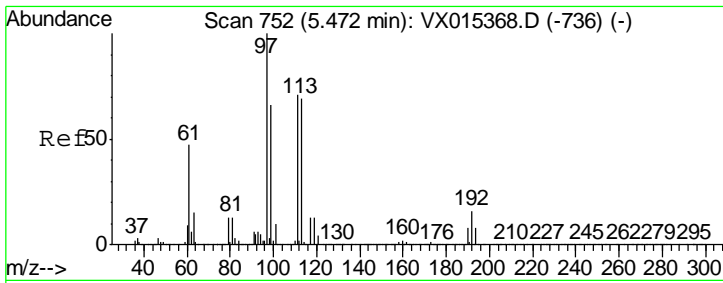
Tgt Ion	Resp	Lower	Upper
65	100		
67	51.0	0.0	102.6



#34
 1,4-Difluorobenzene
 Concen: 50.000 ug/l
 RT: 6.84 min Scan# 976
 Delta R.T. -0.00 min
 Lab File: VX015575.D
 Acq: 08 Apr 2020 17:32

Tgt Ion	Resp	Lower	Upper
114	100		
63	22.8	0.0	44.2
88	17.0	0.0	33.8

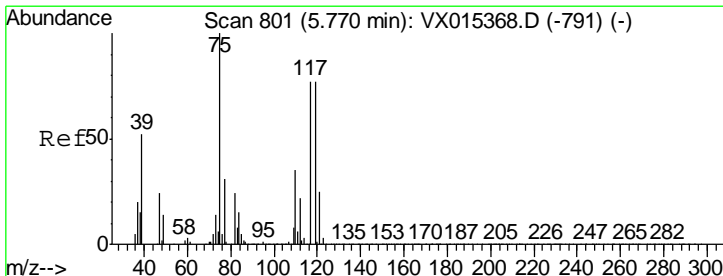
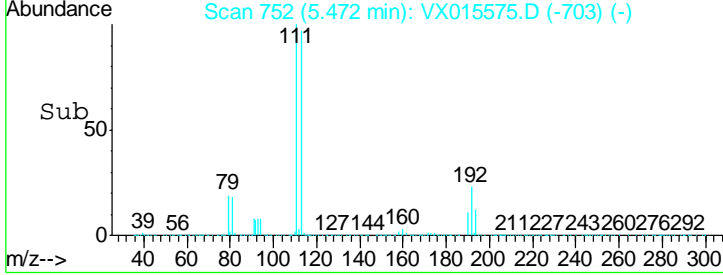
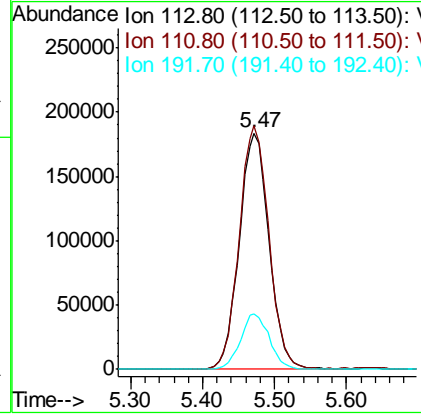
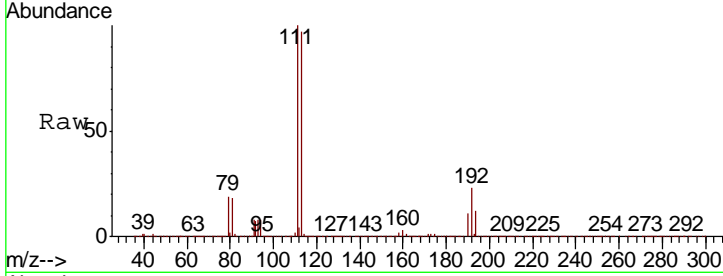




#35
 Dibromofluoromethane
 Concen: 49.420 ug/l
 RT: 5.47 min Scan# 752
 Delta R.T. -0.00 min
 Lab File: VX015575.D
 Acq: 08 Apr 2020 17:32

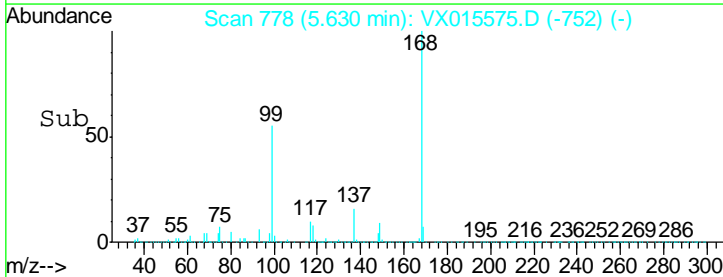
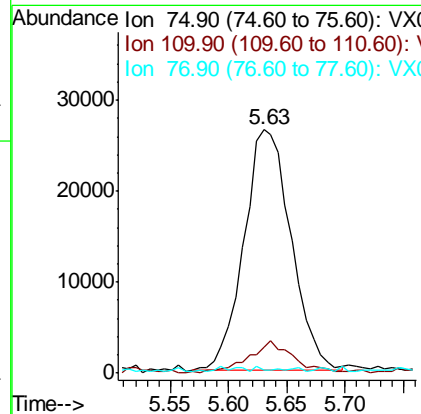
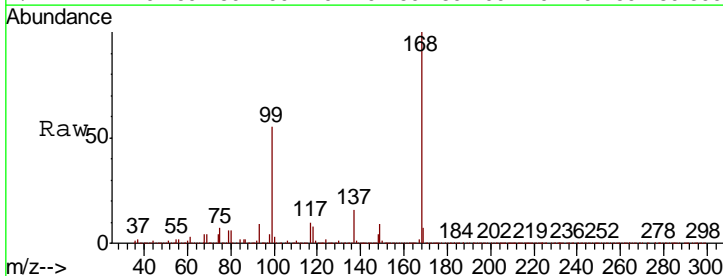
Instrument : MSVOA_X
 ClientSampleID : ST006MW012-200406

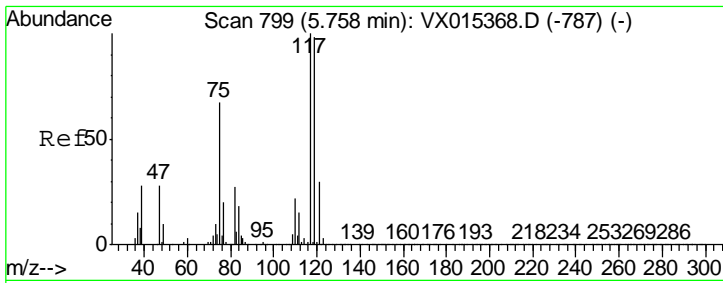
Tgt Ion	Resp	Lower	Upper
113	524120		
113	100		
111	102.7	81.5	122.3
192	22.7	17.8	26.6



#36
 1,1-Dichloropropene
 Concen: 4.851 ug/l
 RT: 5.63 min Scan# 778
 Delta R.T. -0.14 min
 Lab File: VX015575.D
 Acq: 08 Apr 2020 17:32

Tgt Ion	Resp	Lower	Upper
75	74158		
75	100		
110	12.8	17.1	51.3#
77	0.0	24.6	36.8#

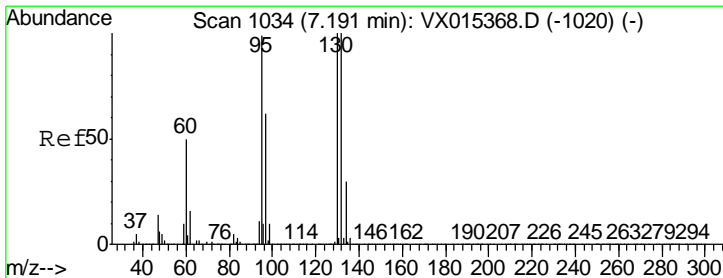
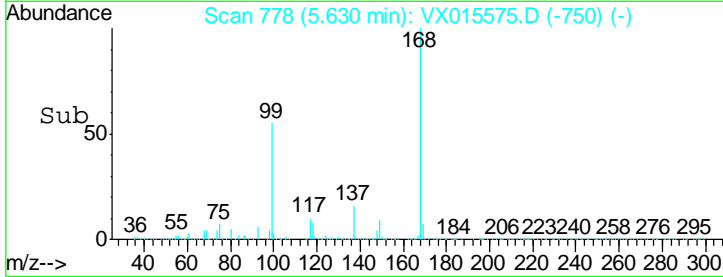
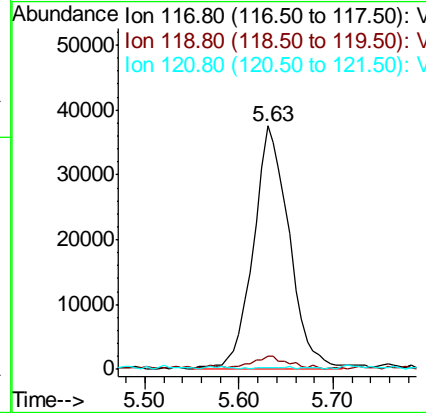
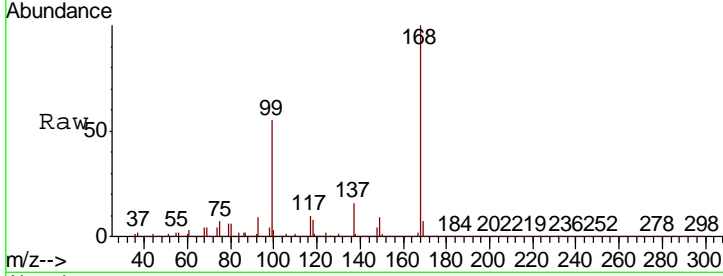




#38
 Carbon Tetrachloride
 Concen: 6.069 ug/l
 RT: 5.63 min Scan# 778
 Delta R.T. -0.13 min
 Lab File: VX015575.D
 Acq: 08 Apr 2020 17:32

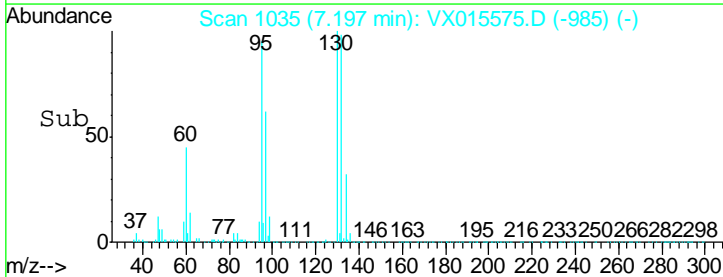
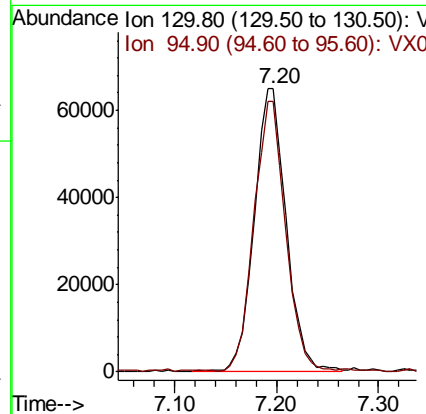
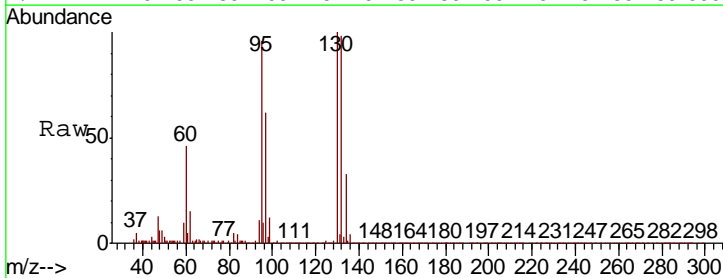
Instrument :
 MSVOA_X
 ClientSampleId :
 ST006MW012-200406

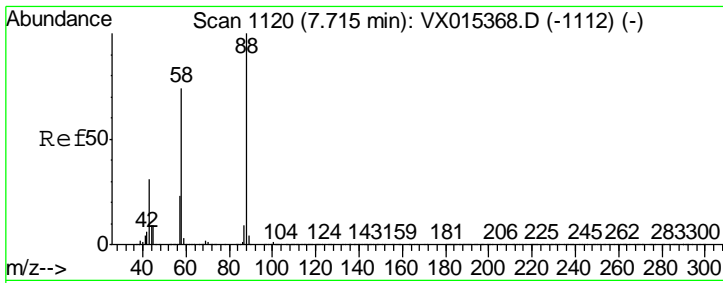
Tgt Ion	Resp	Lower	Upper
117	100		
119	5.1	78.0	117.0#
121	0.4	23.8	35.8#



#44
 Trichloroethene
 Concen: 11.529 ug/l
 RT: 7.20 min Scan# 1035
 Delta R.T. 0.01 min
 Lab File: VX015575.D
 Acq: 08 Apr 2020 17:32

Tgt Ion	Resp	Lower	Upper
130	100		
95	95.2	0.0	199.0

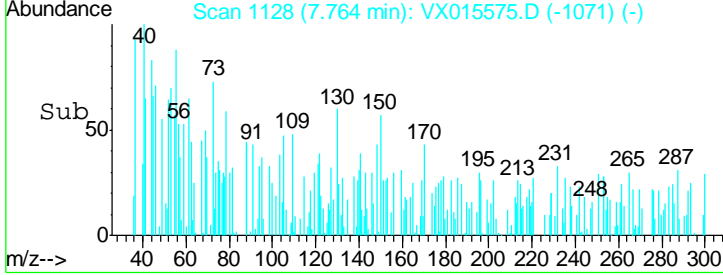
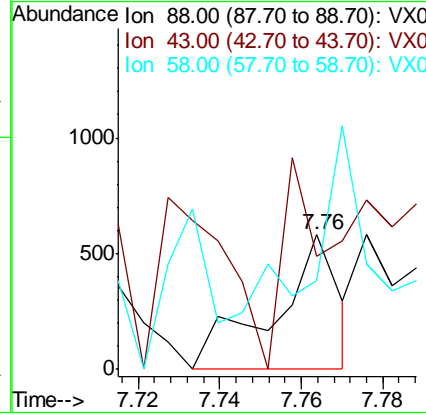
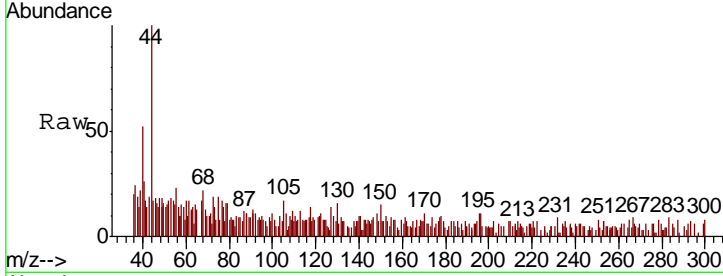




#49
 1,4-Dioxane
 Concen: 2.035 ug/l
 RT: 7.76 min Scan# 1128
 Delta R.T. 0.05 min
 Lab File: VX015575.D
 Acq: 08 Apr 2020 17:32

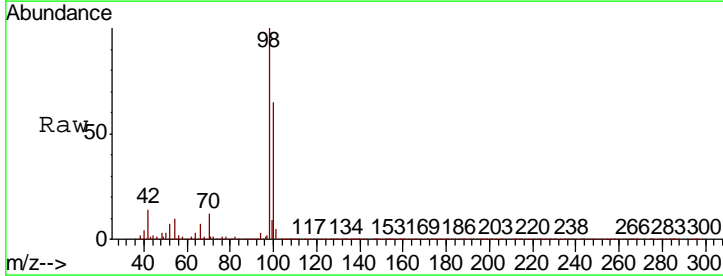
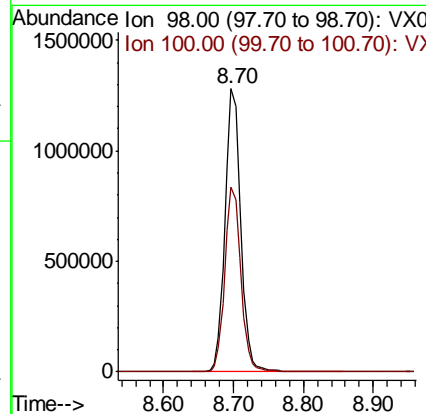
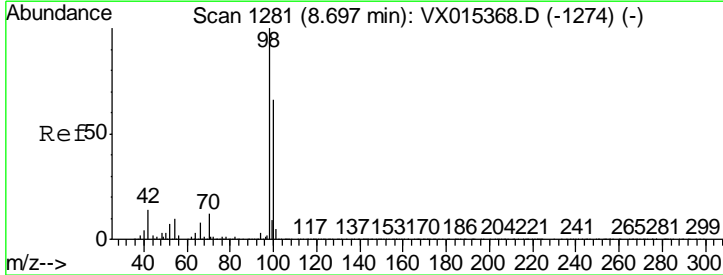
Instrument : MSVOA_X
 ClientSampled : ST006MW012-200406

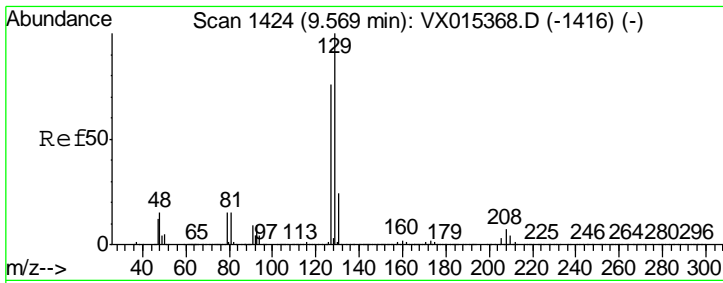
Tgt Ion	Resp	Lower	Upper
88	637		
43	35.9	30.1	45.1
58	117.3	60.6	90.8#



#50
 Toluene-d8
 Concen: 51.462 ug/l
 RT: 8.70 min Scan# 1281
 Delta R.T. -0.00 min
 Lab File: VX015575.D
 Acq: 08 Apr 2020 17:32

Tgt Ion	Resp	Lower	Upper
98	2009409		
100	66.7	53.5	80.3

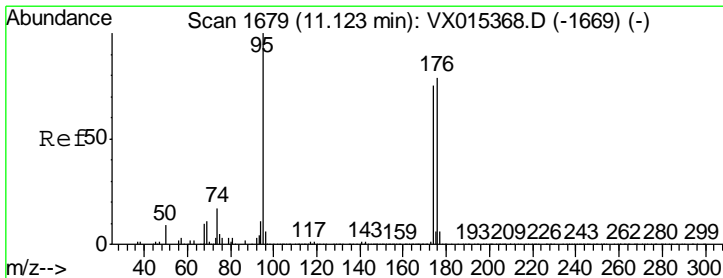
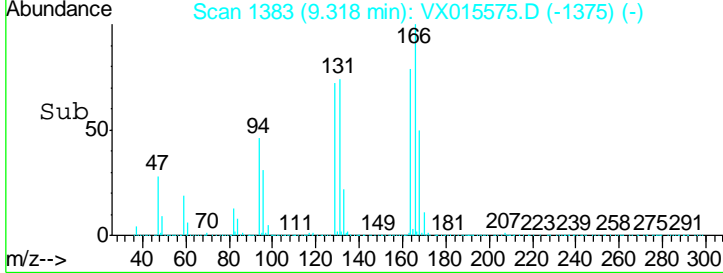
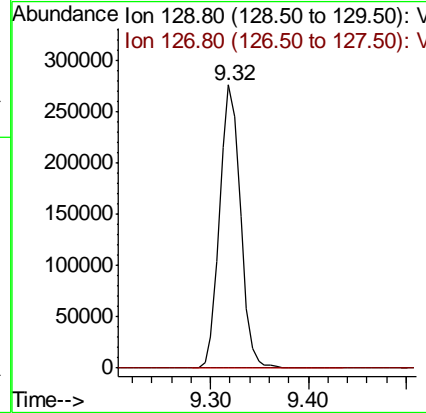
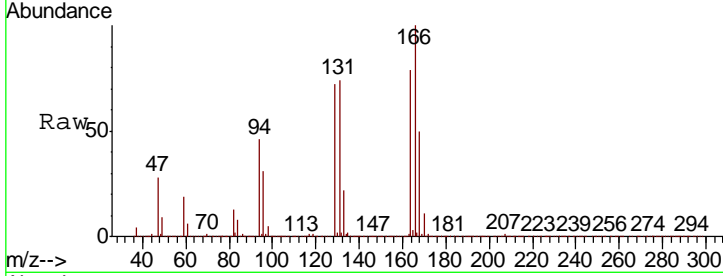




#60
 Dibromochloromethane
 Concen: 29.997 ug/l
 RT: 9.32 min Scan# 1383
 Delta R.T. -0.25 min
 Lab File: VX015575.D
 Acq: 08 Apr 2020 17:32

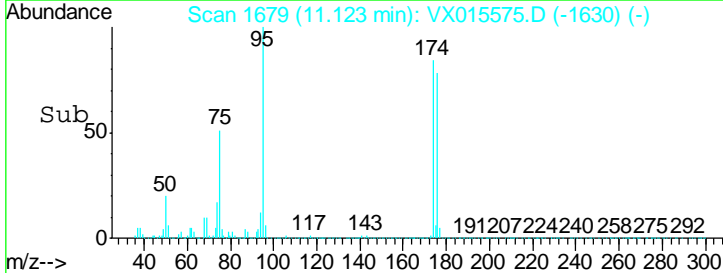
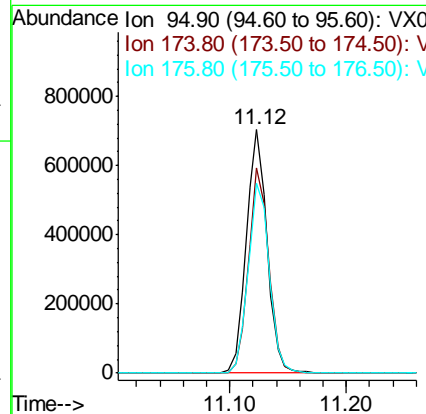
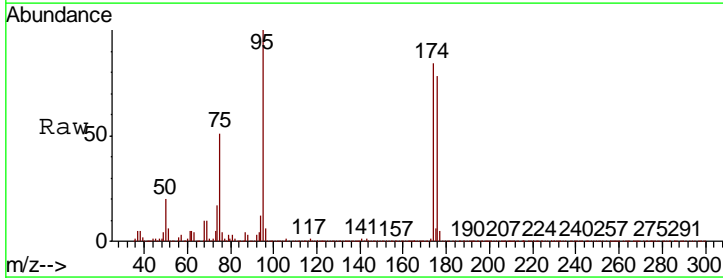
Instrument :
 MSVOA_X
 ClientSampled :
 ST006MW012-200406

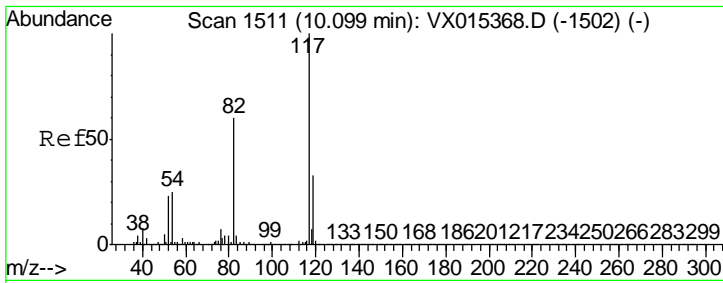
Tgt Ion	Resp	Lower	Upper
129	407713		
127	0.3	38.2	114.6#



#62
 4-Bromofluorobenzene
 Concen: 54.996 ug/l
 RT: 11.12 min Scan# 1679
 Delta R.T. -0.00 min
 Lab File: VX015575.D
 Acq: 08 Apr 2020 17:32

Tgt Ion	Resp	Lower	Upper
95	872714		
174	83.5	0.0	158.6
176	79.9	0.0	159.0



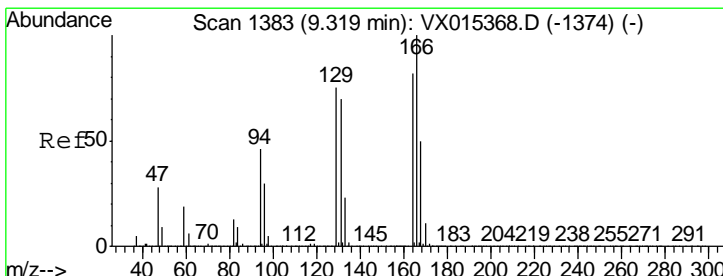
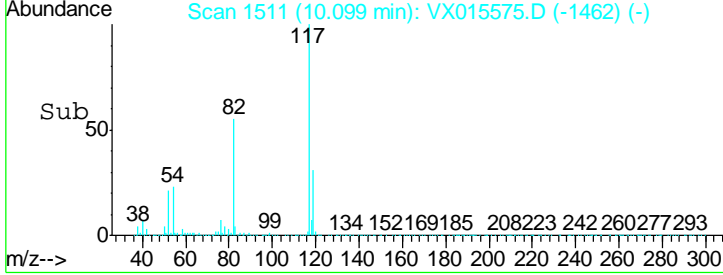
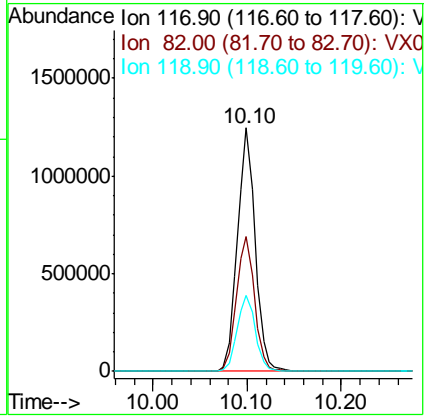
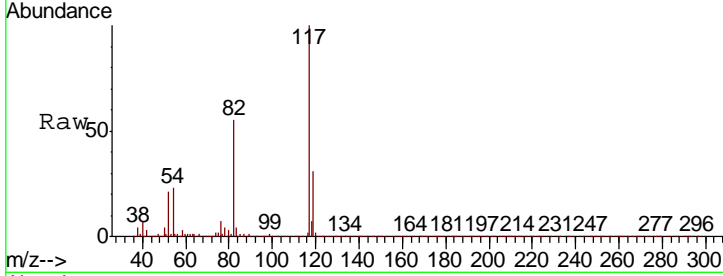


#63
 Chlorobenzene-d5
 Concen: 50.000 ug/l
 RT: 10.10 min Scan# 1511
 Delta R.T. -0.00 min
 Lab File: VX015575.D
 Acq: 08 Apr 2020 17:32

Instrument : MSVOA_X
 ClientSampleId : ST006MW012-200406

Tgt Ion: 117 Resp: 1637007

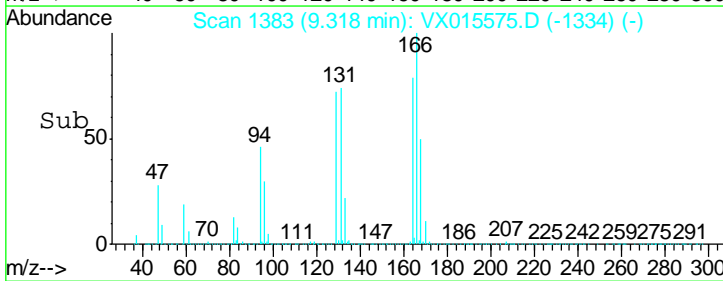
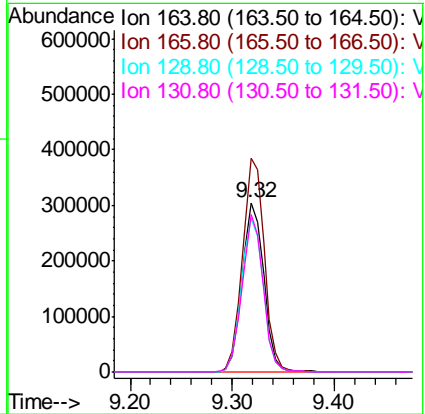
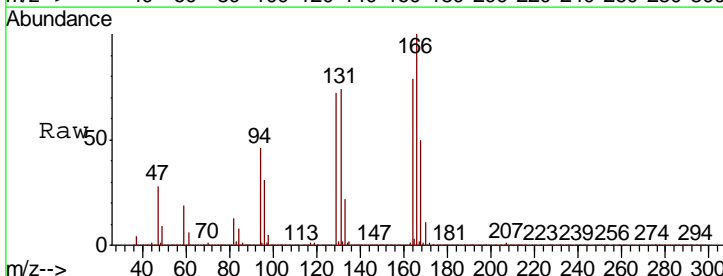
Ion	Ratio	Lower	Upper
117	100		
82	55.3	47.8	71.8
119	31.3	26.8	40.2

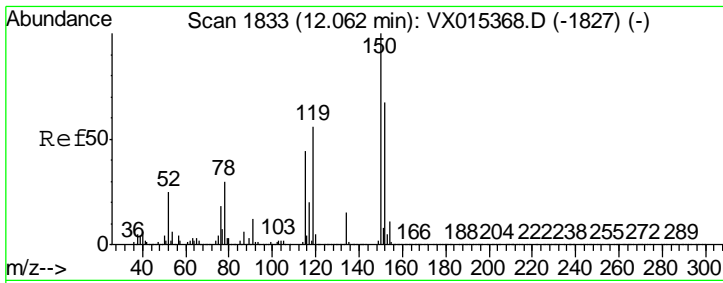


#64
 Tetrachloroethene
 Concen: 36.268 ug/l
 RT: 9.32 min Scan# 1383
 Delta R.T. -0.00 min
 Lab File: VX015575.D
 Acq: 08 Apr 2020 17:32

Tgt Ion: 164 Resp: 448059

Ion	Ratio	Lower	Upper
164	100		
166	126.2	97.8	146.6
129	90.3	73.0	109.4
131	92.8	68.6	103.0

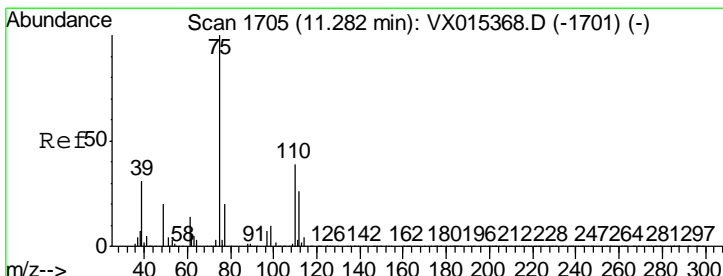
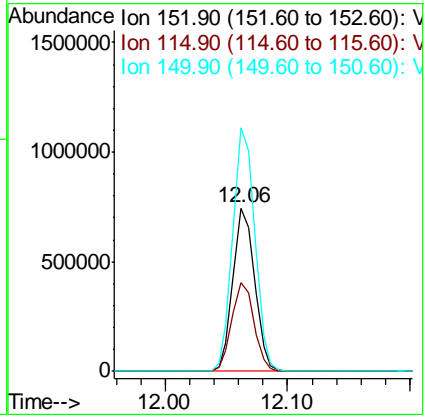
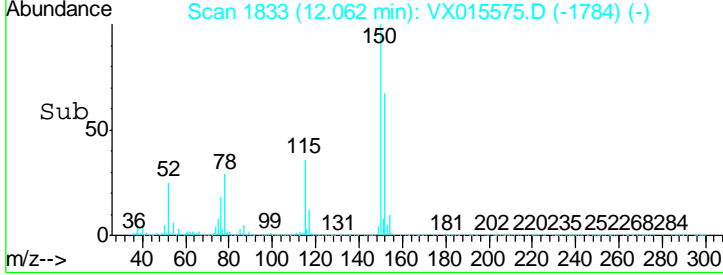
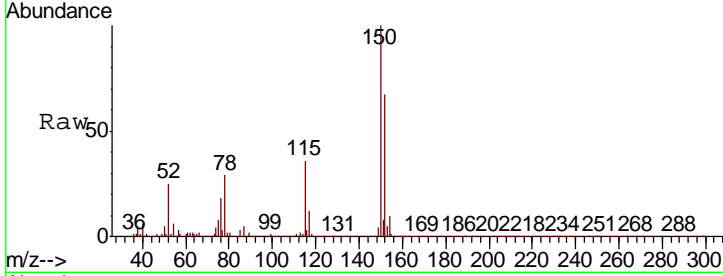




#72
 1,4-Dichlorobenzene-d4
 Concen: 50.000 ug/l
 RT: 12.06 min Scan# 1833
 Delta R.T. -0.00 min
 Lab File: VX015575.D
 Acq: 08 Apr 2020 17:32

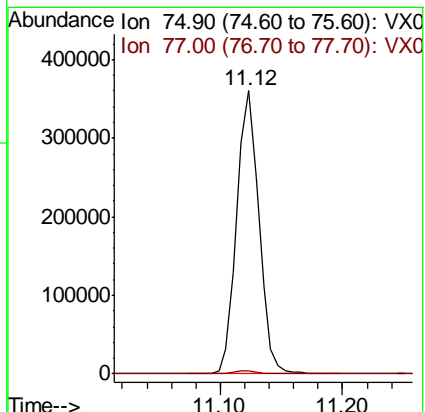
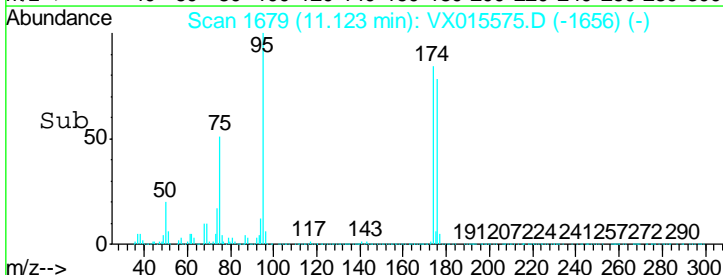
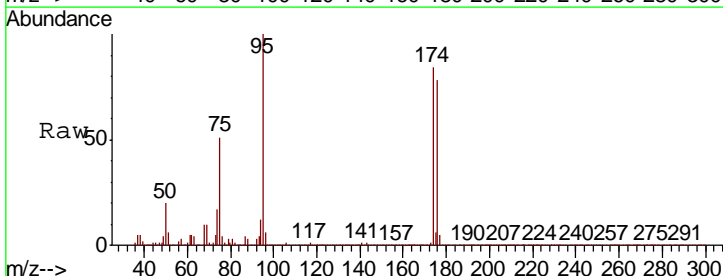
Instrument : MSVOA_X
 ClientSampled : ST006MW012-200406

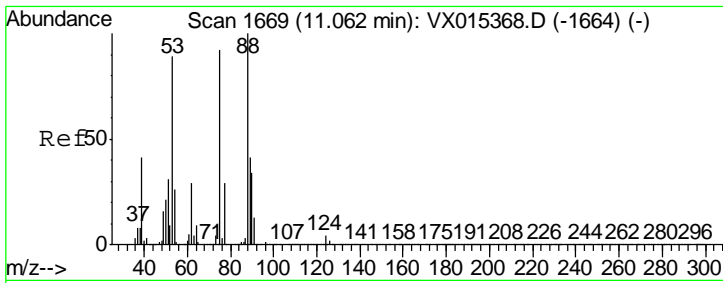
Tgt Ion	Resp	Lower	Upper
152	100		
115	55.3	39.0	116.9
150	151.3	0.0	340.8



#76
 1,2,3-Trichloropropane
 Concen: 23.898 ug/l
 RT: 11.12 min Scan# 1679
 Delta R.T. -0.16 min
 Lab File: VX015575.D
 Acq: 08 Apr 2020 17:32

Tgt Ion	Resp	Lower	Upper
75	100		
77	1.5	21.2	63.6





#81
 trans-1,4-Dichloro-2-butene
 Concen: 57.343 ug/l
 RT: 11.12 min Scan# 1679
 Delta R.T. 0.06 min
 Lab File: VX015575.D
 Acq: 08 Apr 2020 17:32

Instrument :
 MSVOA_X
 ClientSampleId :
 ST006MW012-200406

Tot Ion: 75 Resp: 449030

Ion	Ratio	Lower	Upper
75	100		
53	0.0	80.1	120.1#
89	0.2	36.1	54.1#

