

Data Path : Z:\VOASRV\HPCHEM1\MSVOA X\DATA\VX040820\
 Data File : VX015563.D
 Acq On : 08 Apr 2020 13:00
 Operator : JC/SP
 Sample : L2151-11
 Misc : 5.0mL/MSVOA X/WATER
 ALS Vial : 8 Sample Multiplier: 1

Instrument :
 MSVOA_X
 ClientSampleId :
 CBH-140

Quant Time: Apr 09 07:02:58 2020
 Quant Method : Z:\VOASRV\HPCHEM1\MSVOA_X\METHOD\82X032720W.M
 Quant Title : SW846 8260
 QLast Update : Fri Mar 27 09:35:51 2020
 Response via : Initial Calibration

Internal Standards	R.T.	QIon	Response	Conc	Units	Dev(Min)
1) Pentafluorobenzene	5.64	168	1122833	50.00	ug/l	0.00
34) 1,4-Difluorobenzene	6.84	114	1746207	50.00	ug/l	0.00
63) Chlorobenzene-d5	10.10	117	1670151	50.00	ug/l	0.00
72) 1,4-Dichlorobenzene-d4	12.06	152	868419	50.00	ug/l	0.00

System Monitoring Compounds

33) 1,2-Dichloroethane-d4	6.04	65	721319	45.55	ug/l	0.00
Spiked Amount				50.000		
			Recovery	=	91.10%	
35) Dibromofluoromethane	5.47	113	547298	49.03	ug/l	0.00
Spiked Amount				50.000		
			Recovery	=	98.06%	
50) Toluene-d8	8.70	98	2087657	50.80	ug/l	0.00
Spiked Amount				50.000		
			Recovery	=	101.60%	
62) 4-Bromofluorobenzene	11.12	95	900687	53.93	ug/l	0.00
Spiked Amount				50.000		
			Recovery	=	107.86%	

Target Compounds

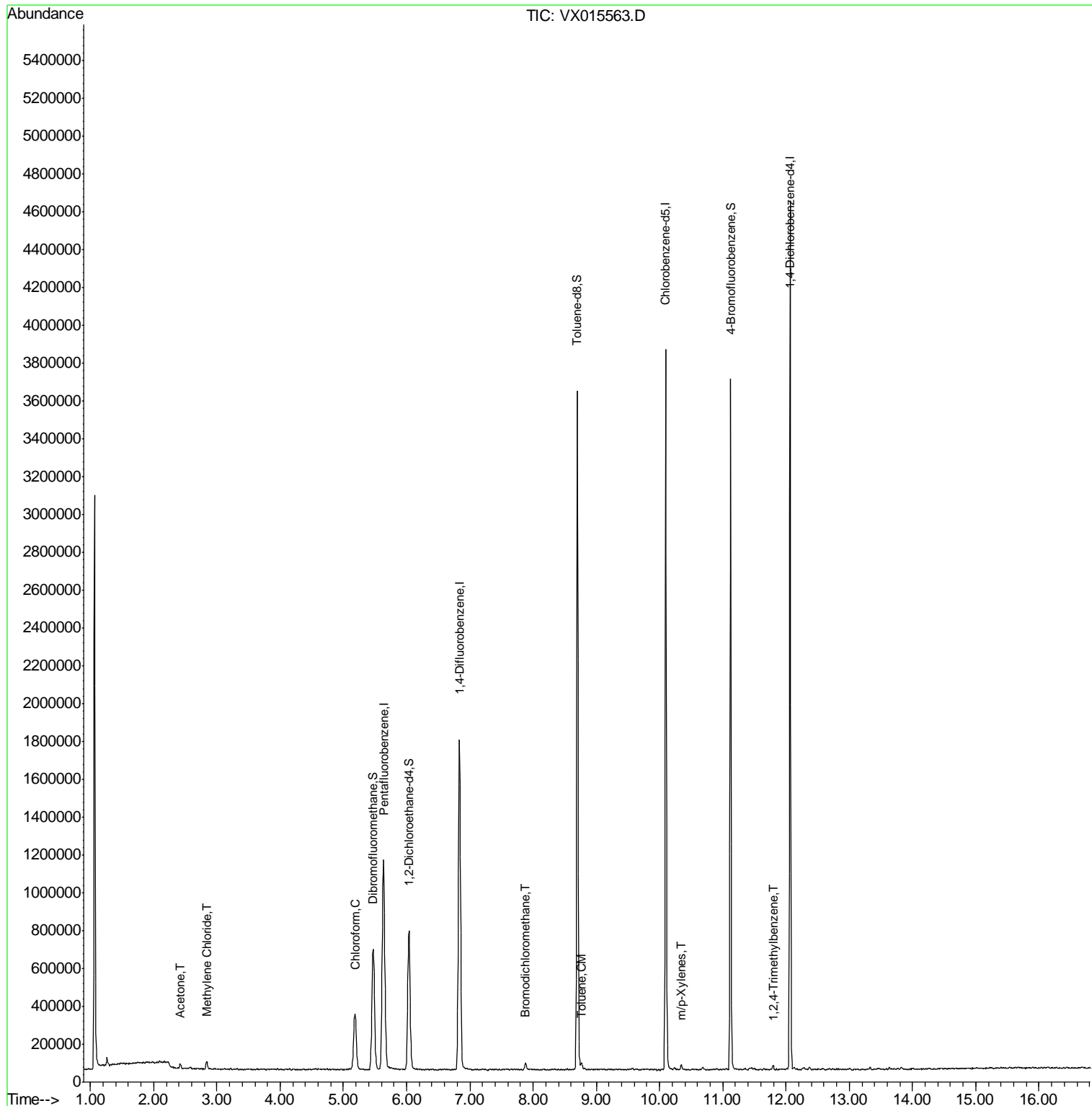
					Qvalue
16) Acetone	2.42	43	28321	4.163	ug/l 95
20) Methylene Chloride	2.84	84	18412	1.449	ug/l 99
30) Chloroform	5.18	83	347968	15.651	ug/l 99
47) Bromodichloromethane	7.88	83	27272	1.513	ug/l 96
52) Toluene	8.77	92	10164	0.350	ug/l 96
68) m/p-Xylenes	10.34	106	7855	0.357	ug/l 98
84) 1,2,4-Trimethylbenzene	11.79	105	10069	0.203	ug/l 90

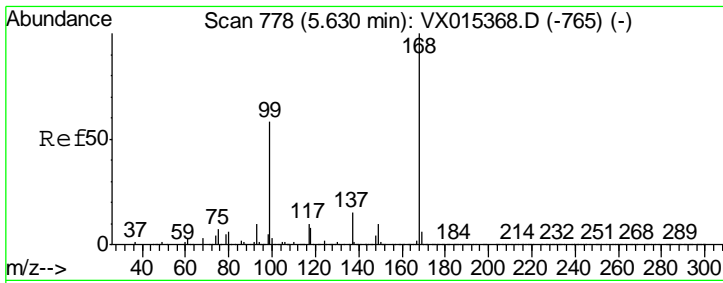
(#) = qualifier out of range (m) = manual integration (+) = signals summed

Data Path : Z:\VOASRV\HPCHEM1\MSVOA X\DATA\VX040820\
 Data File : VX015563.D
 Acq On : 08 Apr 2020 13:00
 Operator : JC/SP
 Sample : L2151-11
 Misc : 5.0mL/MSVOA X/WATER
 ALS Vial : 8 Sample Multiplier: 1

Instrument :
 MSVOA_X
 ClientSampled :
 CBH-140

Quant Time: Apr 09 07:02:58 2020
 Quant Method : Z:\VOASRV\HPCHEM1\MSVOA_X\METHOD\82X032720W.M
 Quant Title : SW846 8260
 QLast Update : Fri Mar 27 09:35:51 2020
 Response via : Initial Calibration

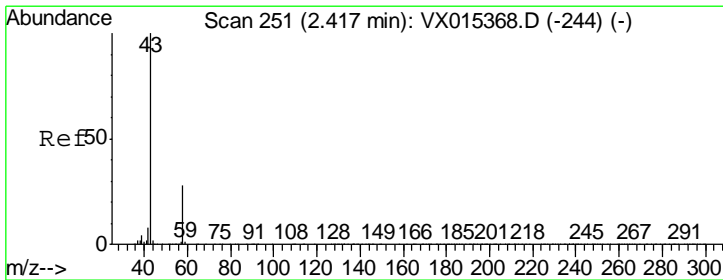
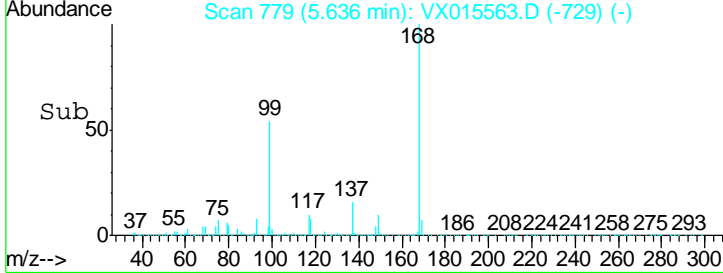
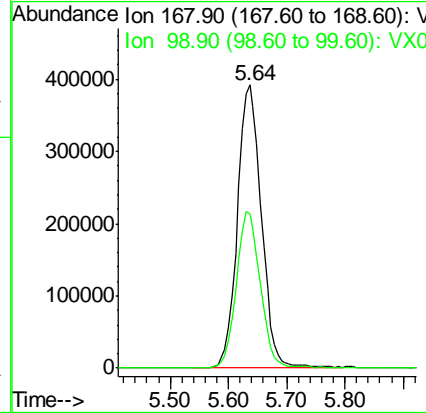
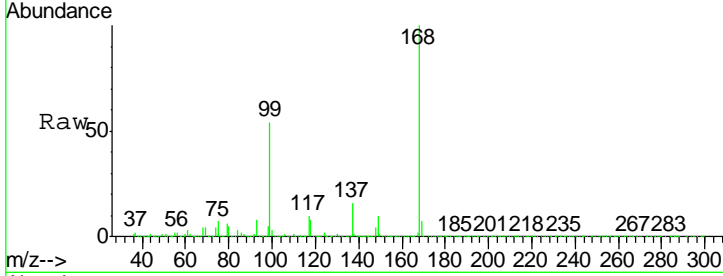




#1
 Pentafluorobenzene
 Concen: 50.000 ug/l
 RT: 5.64 min Scan# 779
 Delta R.T. 0.01 min
 Lab File: VX015563.D
 Acq: 08 Apr 2020 13:00

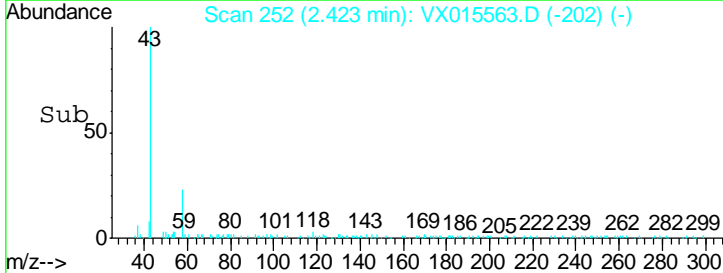
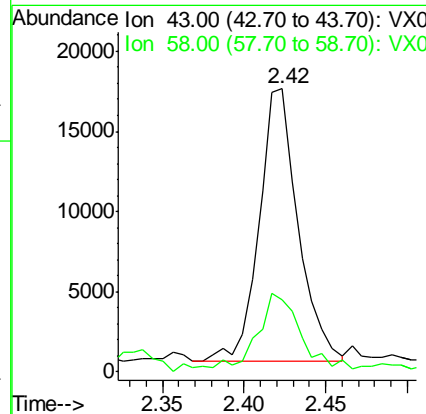
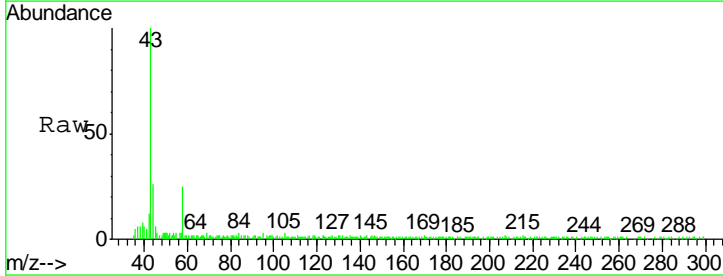
Instrument :
 MSVOA_X
ClientSampled :
 CBH-140

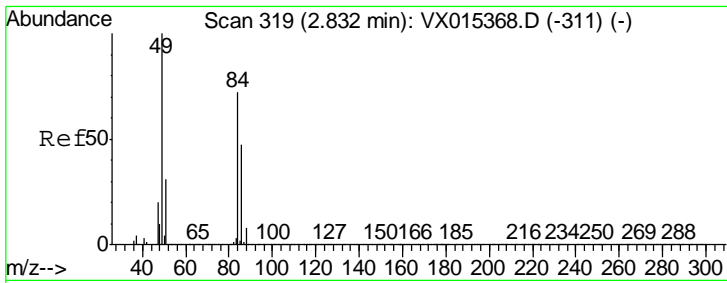
Tgt Ion	Resp	Lower	Upper
168	1122833		
99	54.3	46.4	69.6



#16
 Acetone
 Concen: 4.163 ug/l
 RT: 2.42 min Scan# 252
 Delta R.T. 0.01 min
 Lab File: VX015563.D
 Acq: 08 Apr 2020 13:00

Tgt Ion	Resp	Lower	Upper
43	28321		
58	24.8	22.1	33.1

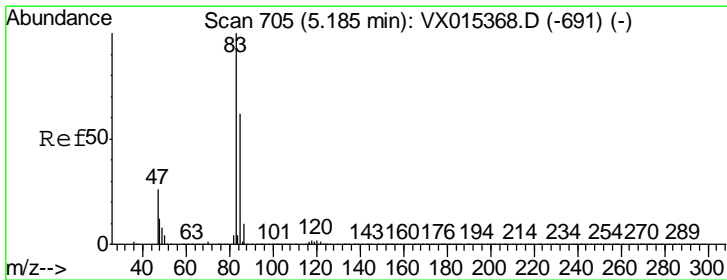
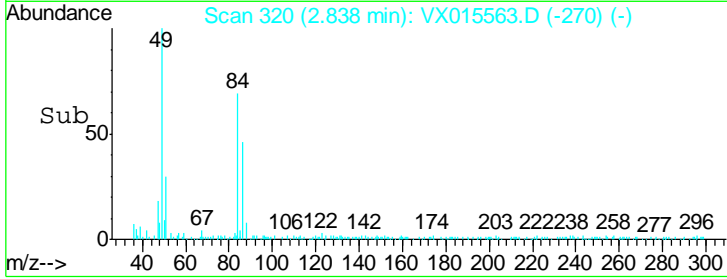
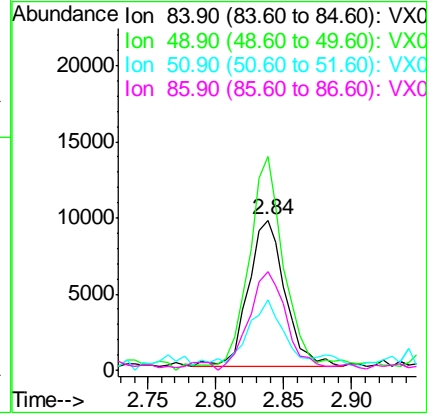
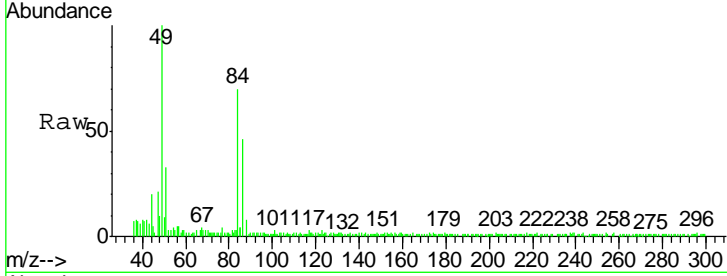




#20
 Methylene Chloride
 Concen: 1.449 ug/l
 RT: 2.84 min Scan# 320
 Delta R.T. 0.01 min
 Lab File: VX015563.D
 Acq: 08 Apr 2020 13:00

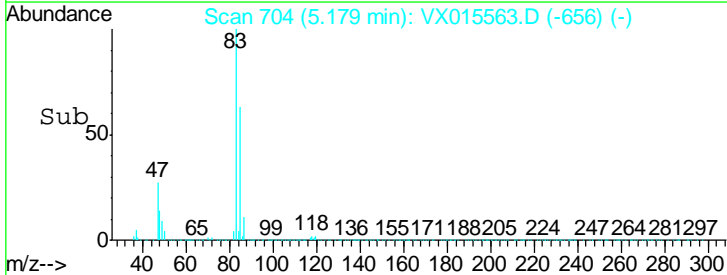
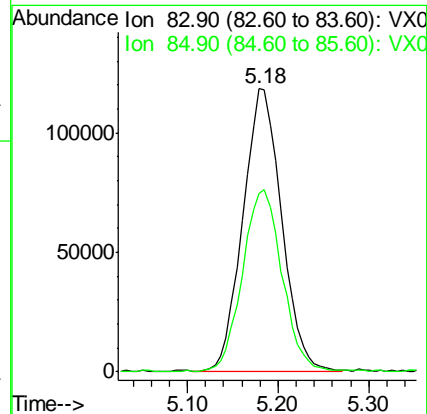
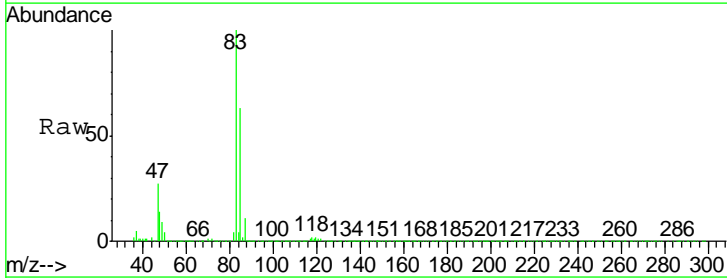
Instrument :
 MSVOA_X
 ClientSampled :
 CBH-140

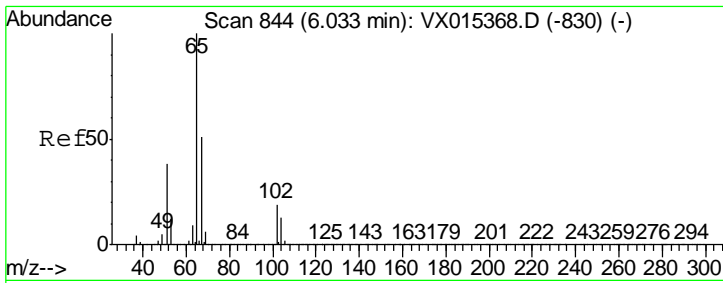
Tgt Ion	Resp	Lower	Upper
84	18412		
49	138.2	111.3	166.9
51	41.8	34.0	51.0
86	64.2	52.5	78.7



#30
 Chloroform
 Concen: 15.651 ug/l
 RT: 5.18 min Scan# 704
 Delta R.T. -0.01 min
 Lab File: VX015563.D
 Acq: 08 Apr 2020 13:00

Tgt Ion	Resp	Lower	Upper
83	347968		
85	63.0	49.5	74.3

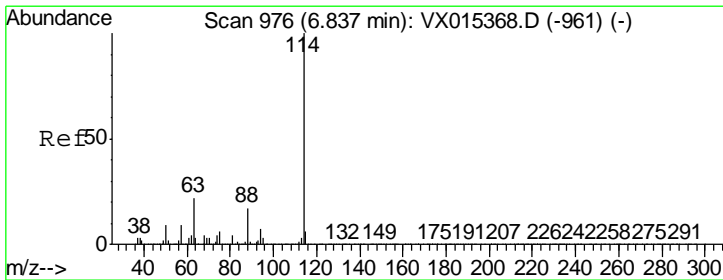
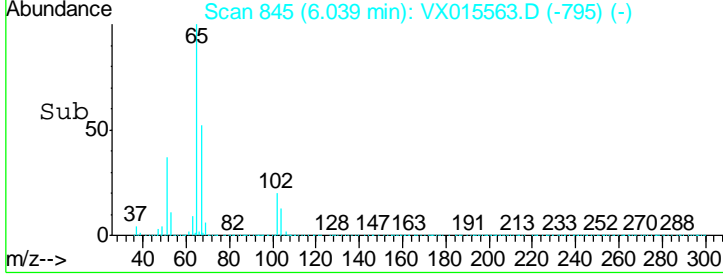
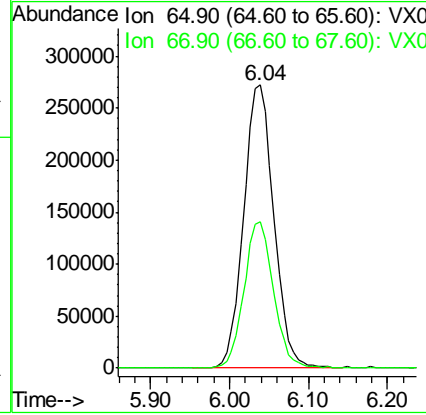
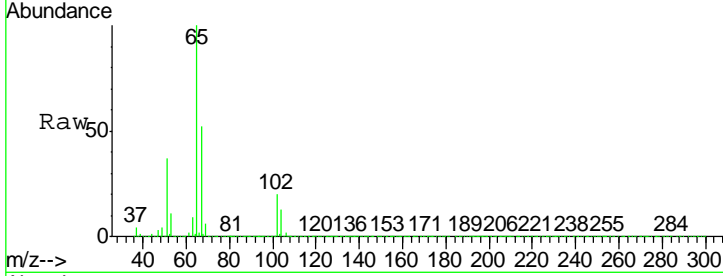




#33
 1,2-Dichloroethane-d4
 Concen: 45.548 ug/l
 RT: 6.04 min Scan# 845
 Delta R.T. 0.01 min
 Lab File: VX015563.D
 Acq: 08 Apr 2020 13:00

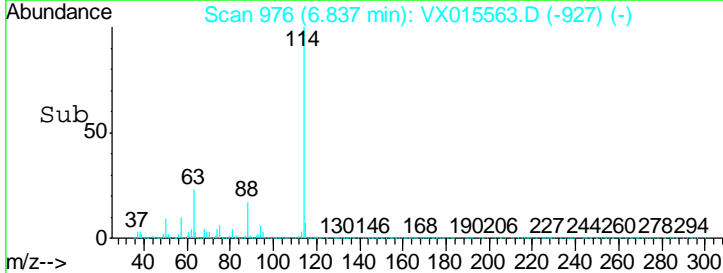
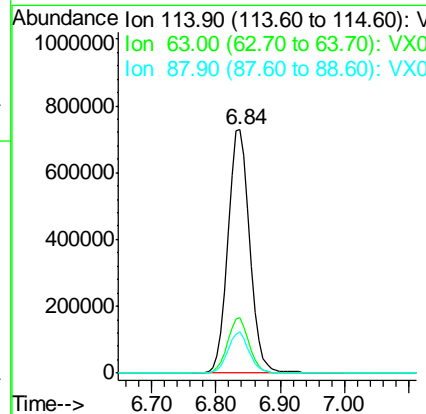
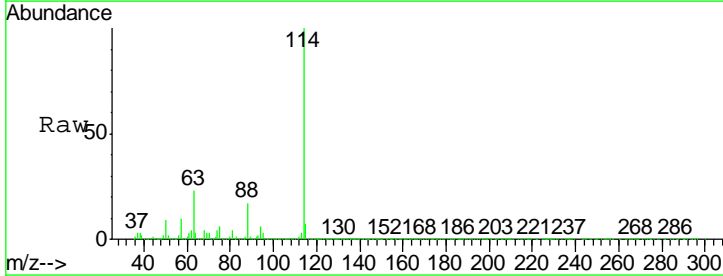
Instrument :
 MSVOA_X
 ClientSampled :
 CBH-140

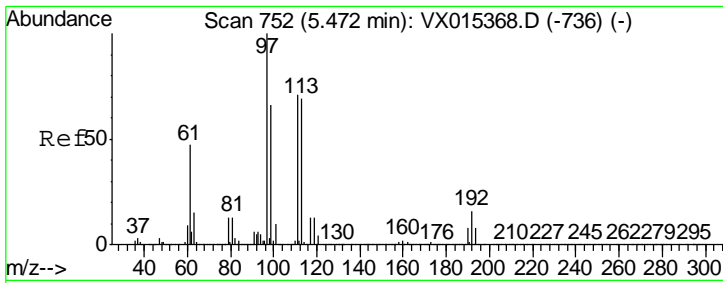
Tgt Ion	Resp	Lower	Upper
65	721319		
67	50.4	0.0	102.6



#34
 1,4-Difluorobenzene
 Concen: 50.000 ug/l
 RT: 6.84 min Scan# 976
 Delta R.T. -0.00 min
 Lab File: VX015563.D
 Acq: 08 Apr 2020 13:00

Tgt Ion	Resp	Lower	Upper
114	1746207		
63	22.7	0.0	44.2
88	16.7	0.0	33.8

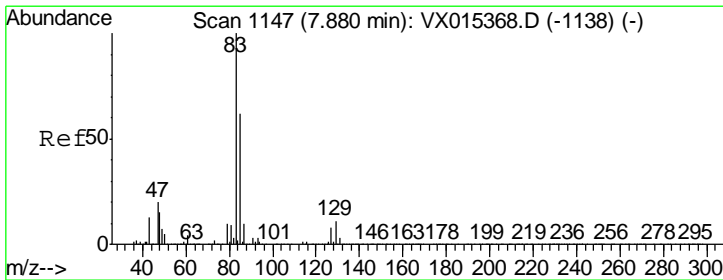
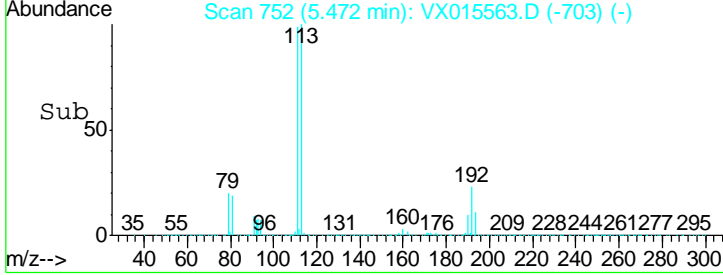
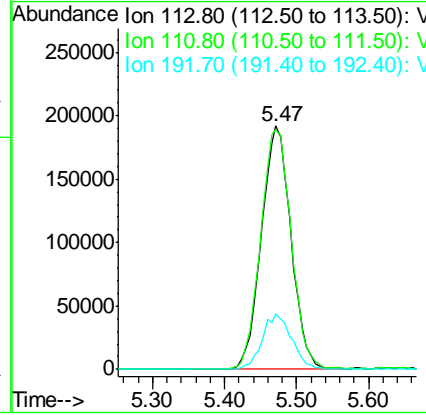
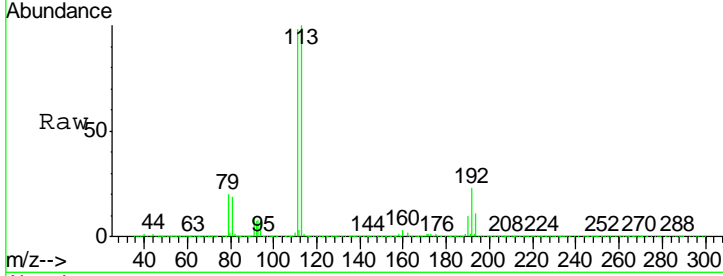




#35
 Dibromofluoromethane
 Concen: 49.031 ug/l
 RT: 5.47 min Scan# 752
 Delta R.T. -0.00 min
 Lab File: VX015563.D
 Acq: 08 Apr 2020 13:00

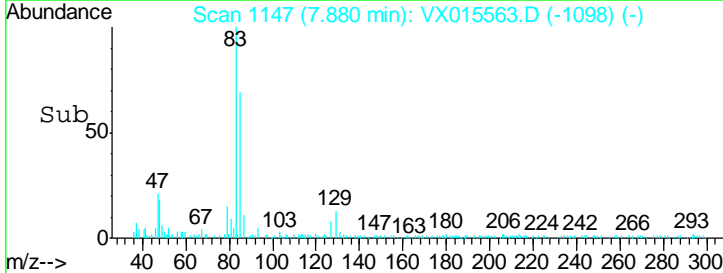
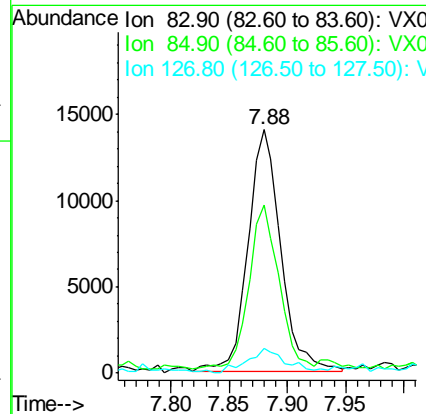
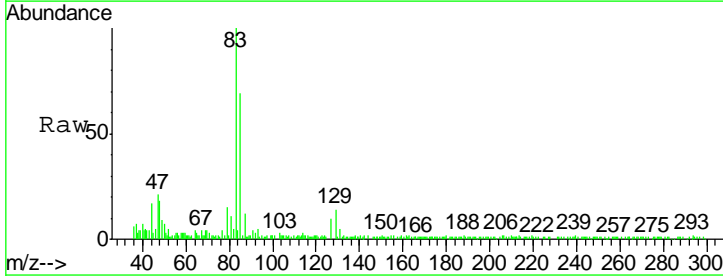
Instrument :
 MSVOA_X
 ClientSampled :
 CBH-140

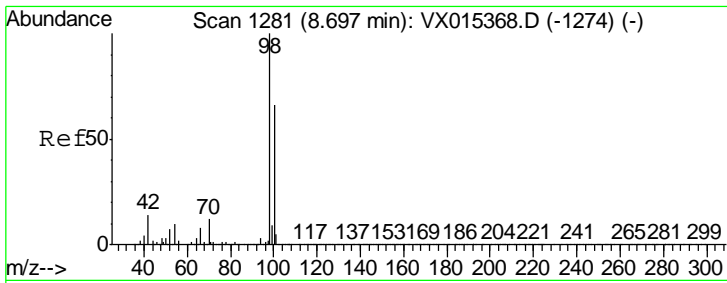
Tgt Ion	Resp	Lower	Upper
113	547298		
111	102.2	81.5	122.3
192	22.6	17.8	26.6



#47
 Bromodichloromethane
 Concen: 1.513 ug/l
 RT: 7.88 min Scan# 1147
 Delta R.T. -0.00 min
 Lab File: VX015563.D
 Acq: 08 Apr 2020 13:00

Tgt Ion	Resp	Lower	Upper
83	27272		
85	65.7	49.7	74.5
127	9.3	6.7	10.1

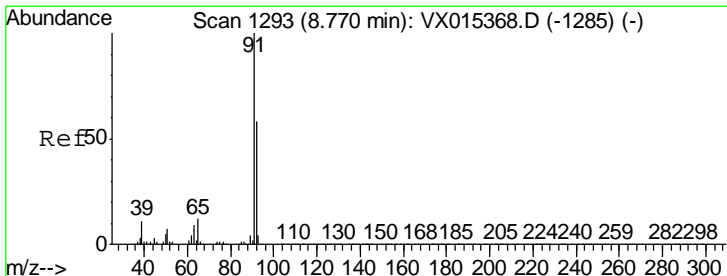
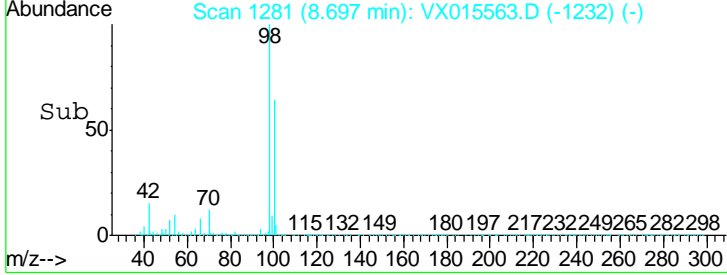
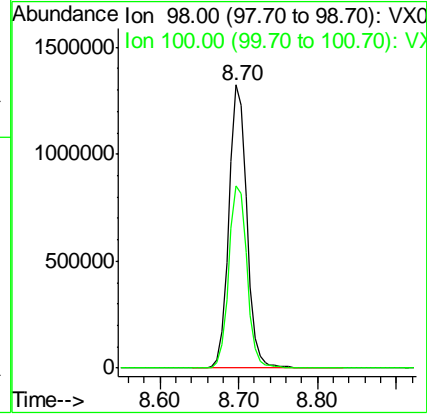
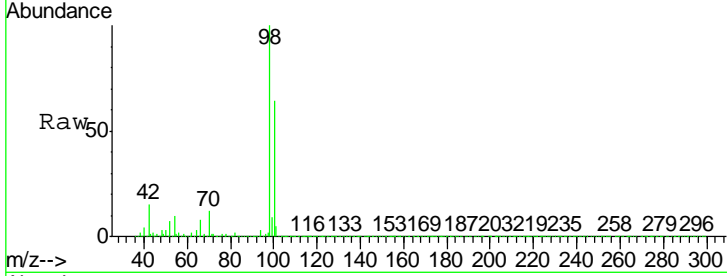




#50
 Toluene-d8
 Concen: 50.799 ug/l
 RT: 8.70 min Scan# 1281
 Delta R.T. -0.00 min
 Lab File: VX015563.D
 Acq: 08 Apr 2020 13:00

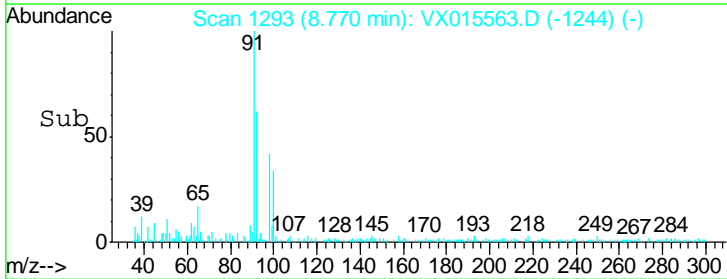
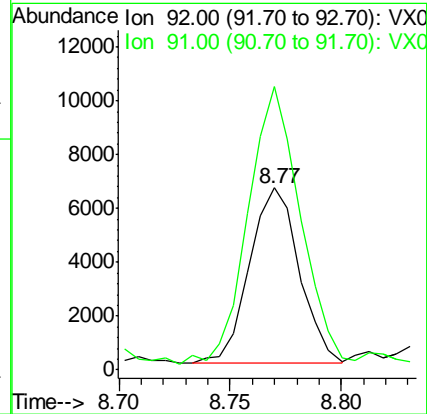
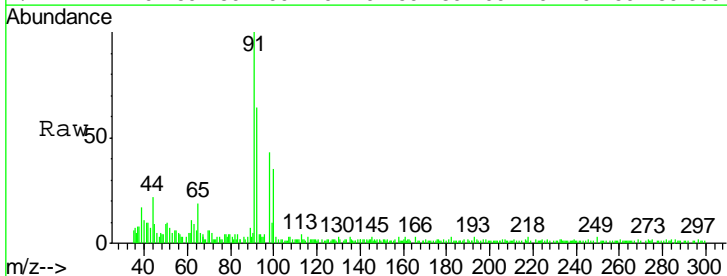
Instrument :
 MSVOA_X
ClientSampled :
 CBH-140

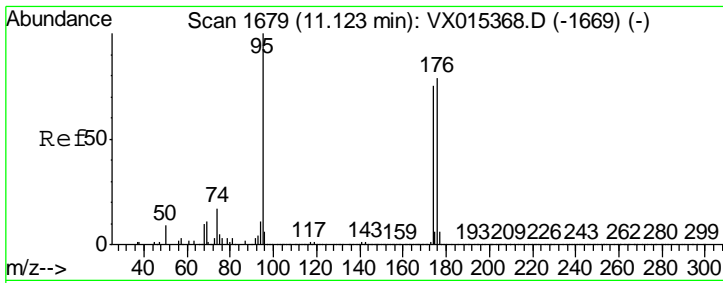
Tgt Ion: 98 Resp: 2087657
 Ion Ratio Lower Upper
 98 100
 100 65.9 53.5 80.3



#52
 Toluene
 Concen: 0.350 ug/l
 RT: 8.77 min Scan# 1293
 Delta R.T. -0.00 min
 Lab File: VX015563.D
 Acq: 08 Apr 2020 13:00

Tgt Ion: 92 Resp: 10164
 Ion Ratio Lower Upper
 92 100
 91 164.7 136.6 205.0

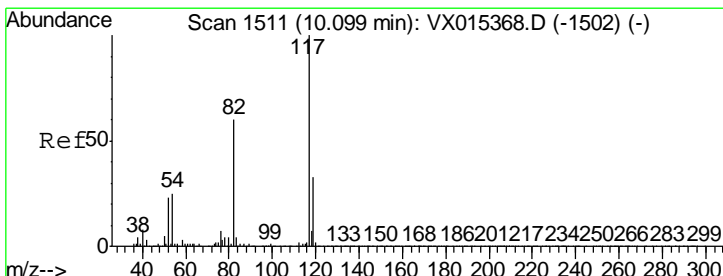
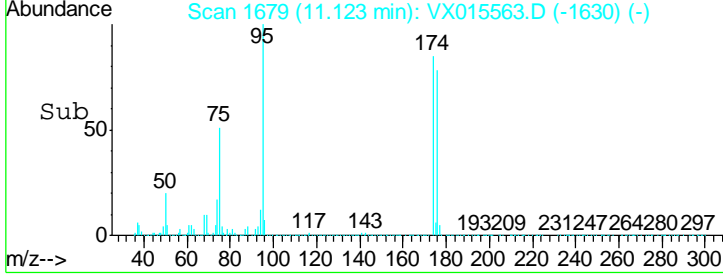
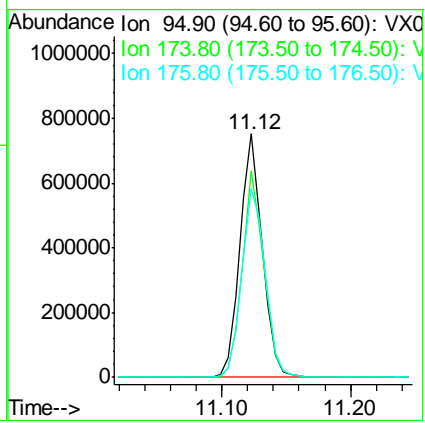
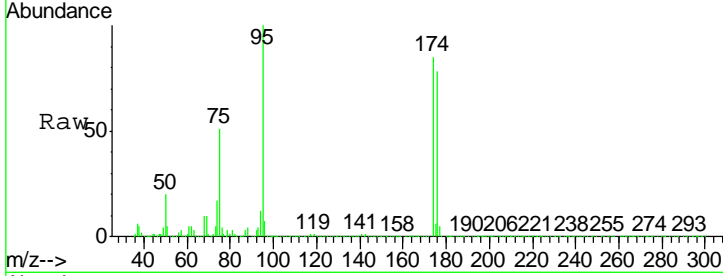




#62
 4-Bromofluorobenzene
 Concen: 53.928 ug/l
 RT: 11.12 min Scan# 1679
 Delta R.T. -0.00 min
 Lab File: VX015563.D
 Acq: 08 Apr 2020 13:00

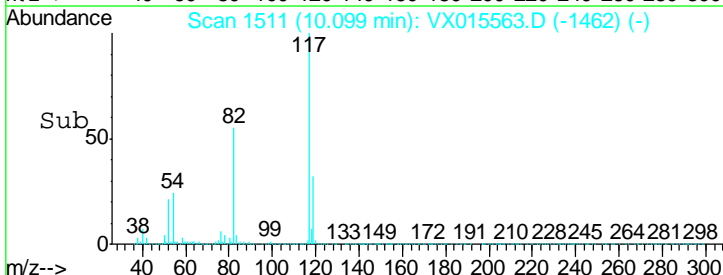
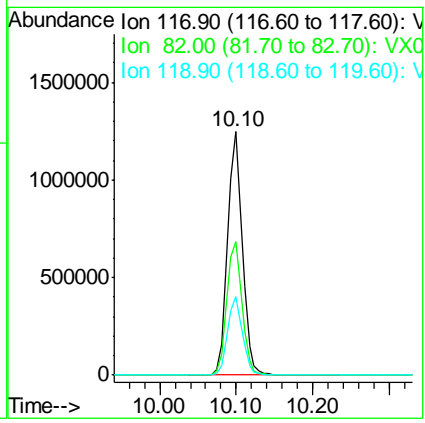
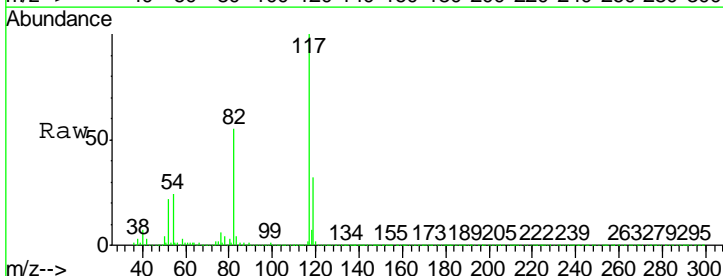
Instrument : MSVOA_X
 ClientSampled : CBH-140

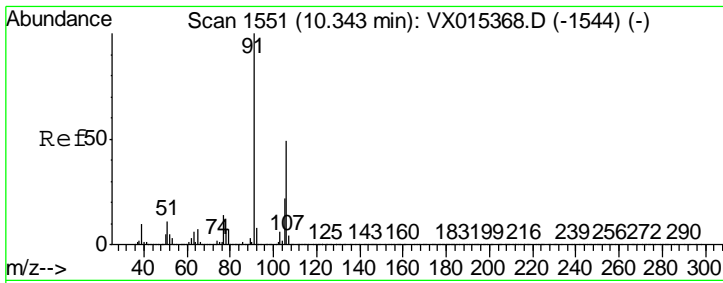
Tgt Ion	Resp	Lower	Upper
95	100		
174	82.2	0.0	158.6
176	81.2	0.0	159.0



#63
 Chlorobenzene-d5
 Concen: 50.000 ug/l
 RT: 10.10 min Scan# 1511
 Delta R.T. -0.00 min
 Lab File: VX015563.D
 Acq: 08 Apr 2020 13:00

Tgt Ion	Resp	Lower	Upper
117	100		
82	54.7	47.8	71.8
119	32.2	26.8	40.2

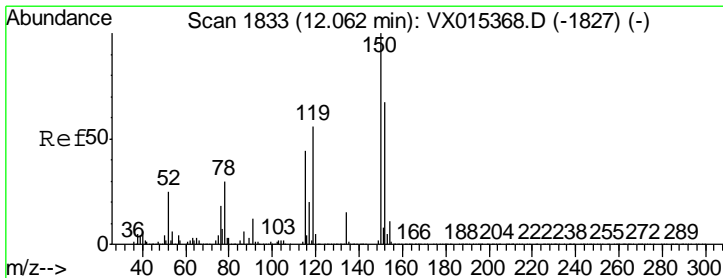
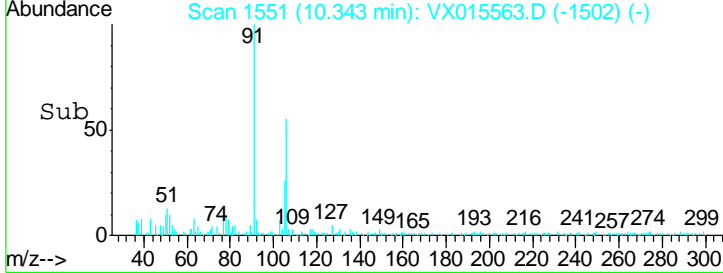
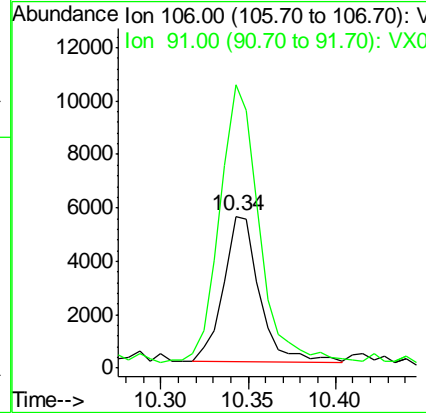
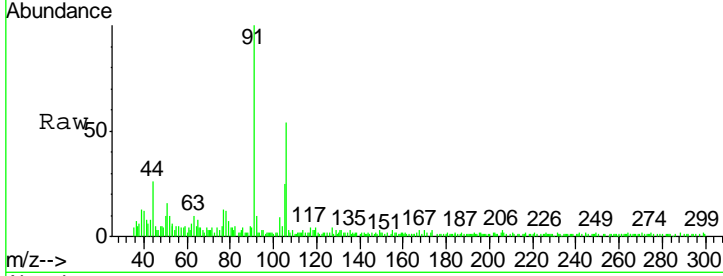




#68
 m/p-Xylenes
 Concen: 0.357 ug/l
 RT: 10.34 min Scan# 1551
 Delta R.T. -0.00 min
 Lab File: VX015563.D
 Acq: 08 Apr 2020 13:00

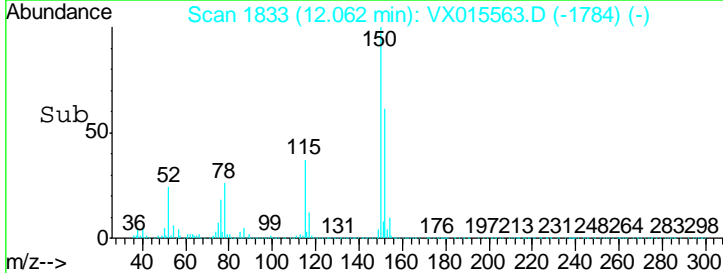
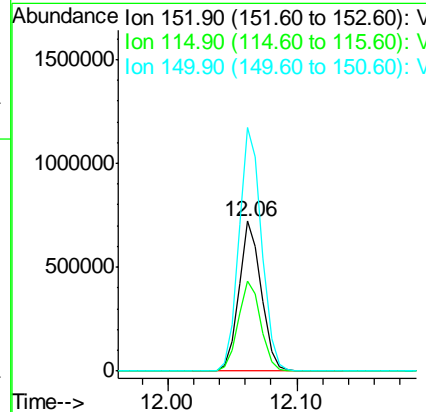
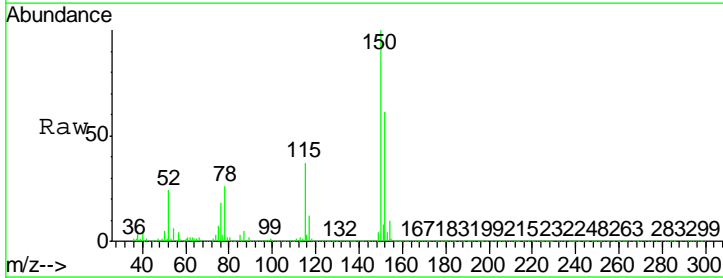
Instrument :
 MSVOA_X
ClientSampled :
 CBH-140

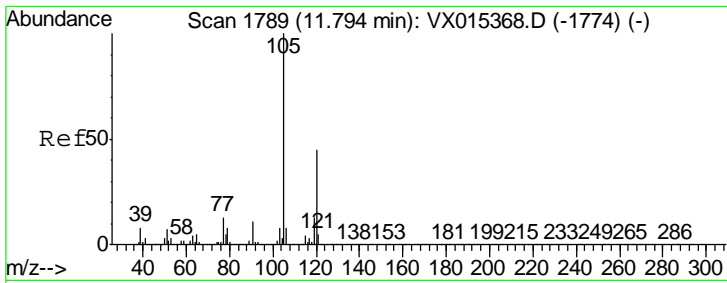
Tgt Ion	Resp	Lower	Upper
106	100		
91	207.2	163.4	245.0



#72
 1,4-Dichlorobenzene-d4
 Concen: 50.000 ug/l
 RT: 12.06 min Scan# 1833
 Delta R.T. -0.00 min
 Lab File: VX015563.D
 Acq: 08 Apr 2020 13:00

Tgt Ion	Resp	Lower	Upper
152	100		
115	61.1	39.0	116.9
150	165.1	0.0	340.8





#84
 1,2,4-Trimethylbenzene
 Concen: 0.203 ug/l
 RT: 11.79 min Scan# 1789
 Delta R.T. -0.00 min
 Lab File: VX015563.D
 Acq: 08 Apr 2020 13:00

Instrument : MSVOA_X
 ClientSampled : CBH-140

Tot Ion	105	Resp	10069
Ion Ratio	Lower	Upper	
105	100		
120	52.2	22.7	68.1

