

Data Path : Z:\voasrv\HPCHEM1\MSVOA_X\Data\VX040822\
 Data File : VX028041.D
 Acq On : 08 Apr 2022 20:37
 Operator : JC/MD
 Sample : N2334-12
 Misc : 5.0mL/MSVOA_X/WATER
 ALS Vial : 26 Sample Multiplier: 1

Instrument :
 MSVOA_X
 ClientSampleId :
 DUP040522

Integration Parameters: RTEINT.P

Integrator: RTE
 Smoothing : ON Filtering: 5
 Sampling : 1 Min Area: 3 % of largest Peak
 Start Thrs: 0.2 Max Peaks: 100
 Stop Thrs : 0 Peak Location: TOP

If leading or trailing edge < 100 prefer < Baseline drop else tangent >
 Peak separation: 5

Method : Z:\voasrv\HPCHEM1\MSVOA_X\Method\82X040722W.M
 Title : SW846 8260

Signal : TIC: VX028041.D\data.ms

peak #	R.T. min	first scan	max scan	last scan	PK TY	peak height	corr. area	corr. % max.	% of total
1	1.246	21	26	43	rBV	100957	238400	31.03%	5.955%
2	1.368	43	46	52	rVB	20912	24318	3.16%	0.607%
3	1.752	104	109	118	rVB	25562	37409	4.87%	0.934%
4	2.215	180	185	191	rVB2	6528	9462	1.23%	0.236%
5	2.337	200	205	209	rBV2	4922	9296	1.21%	0.232%
6	2.782	268	278	286	rBV2	17457	40136	5.22%	1.003%
7	2.867	286	292	300	rVV	14525	28388	3.69%	0.709%
8	3.763	428	439	447	rVB3	3858	10467	1.36%	0.261%
9	4.209	505	512	521	rBV4	3212	9376	1.22%	0.234%
10	4.306	521	528	537	rVB4	3078	8666	1.13%	0.216%
11	5.385	695	705	717	rBV2	60545	181356	23.60%	4.530%
12	5.556	723	733	743	rBV	102021	288781	37.58%	7.213%
13	5.958	790	799	805	rBV	62028	163463	21.27%	4.083%
14	6.044	805	813	826	rVV	293152	768347	100.00%	19.192%
15	6.251	839	847	858	rVV2	6737	22518	2.93%	0.562%
16	6.763	921	931	944	rBV	155573	370551	48.23%	9.256%
17	7.988	1122	1132	1139	rVB	7554	14906	1.94%	0.372%
18	8.110	1139	1152	1160	rBV2	15040	30958	4.03%	0.773%
19	8.653	1230	1241	1248	rBV	304671	476968	62.08%	11.914%
20	8.964	1287	1292	1299	rVB4	7592	15355	2.00%	0.384%
21	9.049	1299	1306	1311	rBV2	7838	13017	1.69%	0.325%
22	10.055	1465	1471	1480	rBV	329436	432228	56.25%	10.796%
23	10.963	1615	1620	1625	rBV2	5980	7726	1.01%	0.193%
24	11.085	1634	1640	1645	rBV	255679	338215	44.02%	8.448%
25	11.305	1672	1676	1681	rBV	6763	8524	1.11%	0.213%
26	12.024	1789	1794	1803	rBV	317895	396654	51.62%	9.908%
27	12.244	1823	1830	1836	rBV	39018	49015	6.38%	1.224%
28	12.926	1934	1942	1945	rBV2	5969	8937	1.16%	0.223%

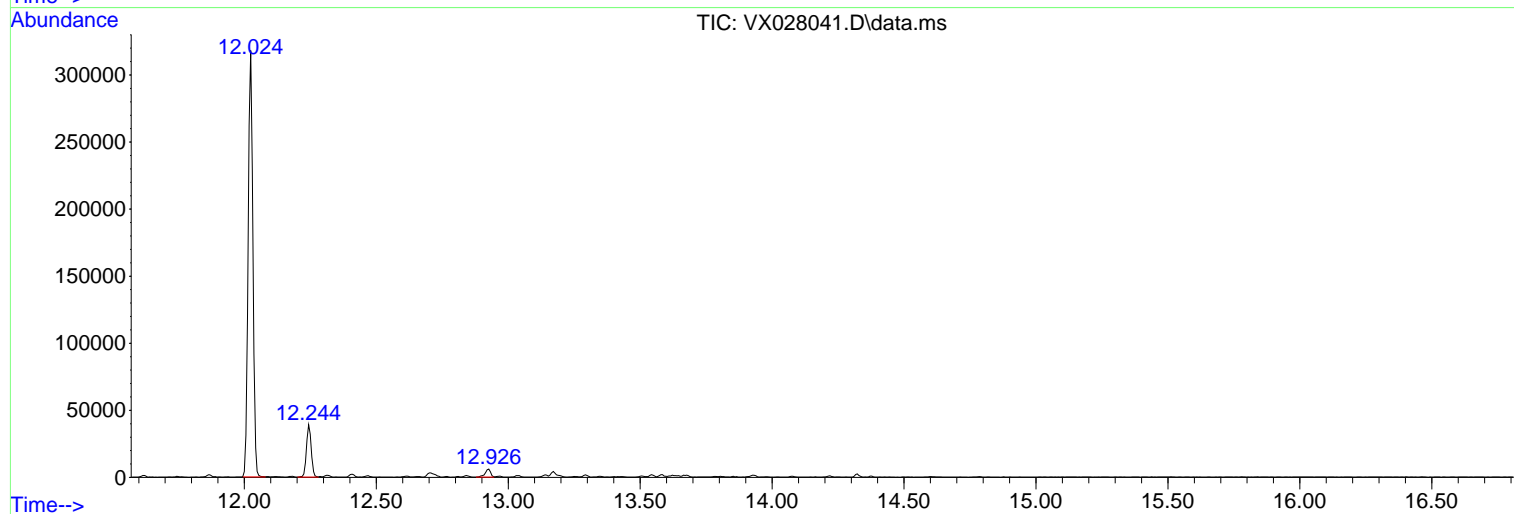
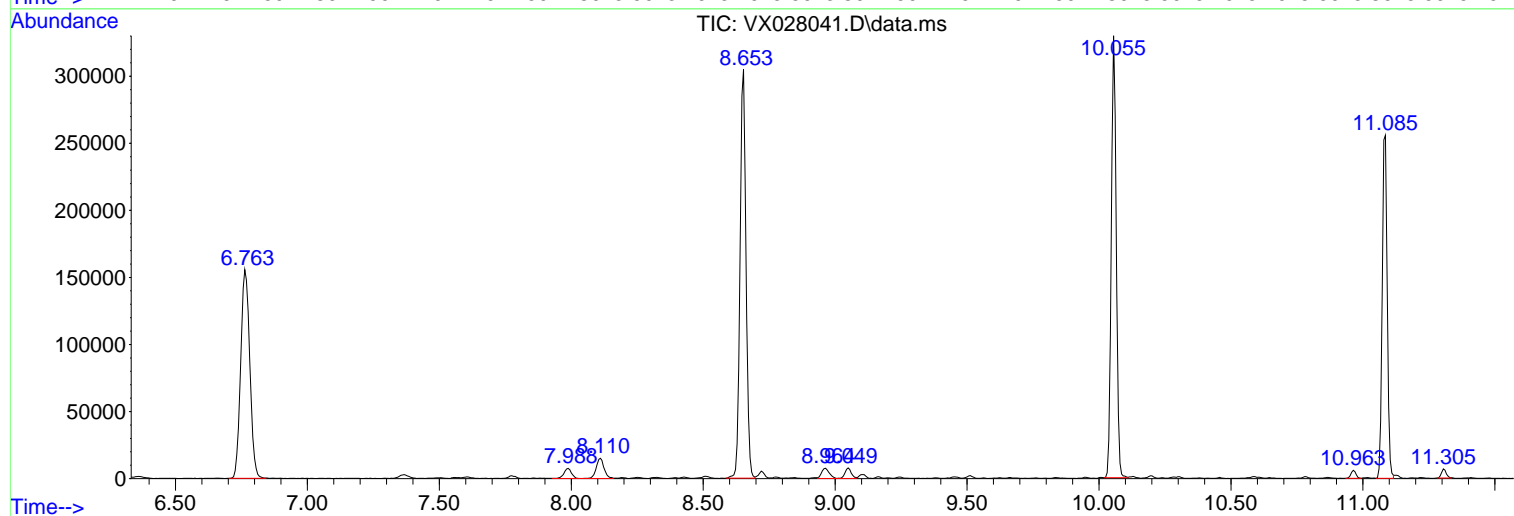
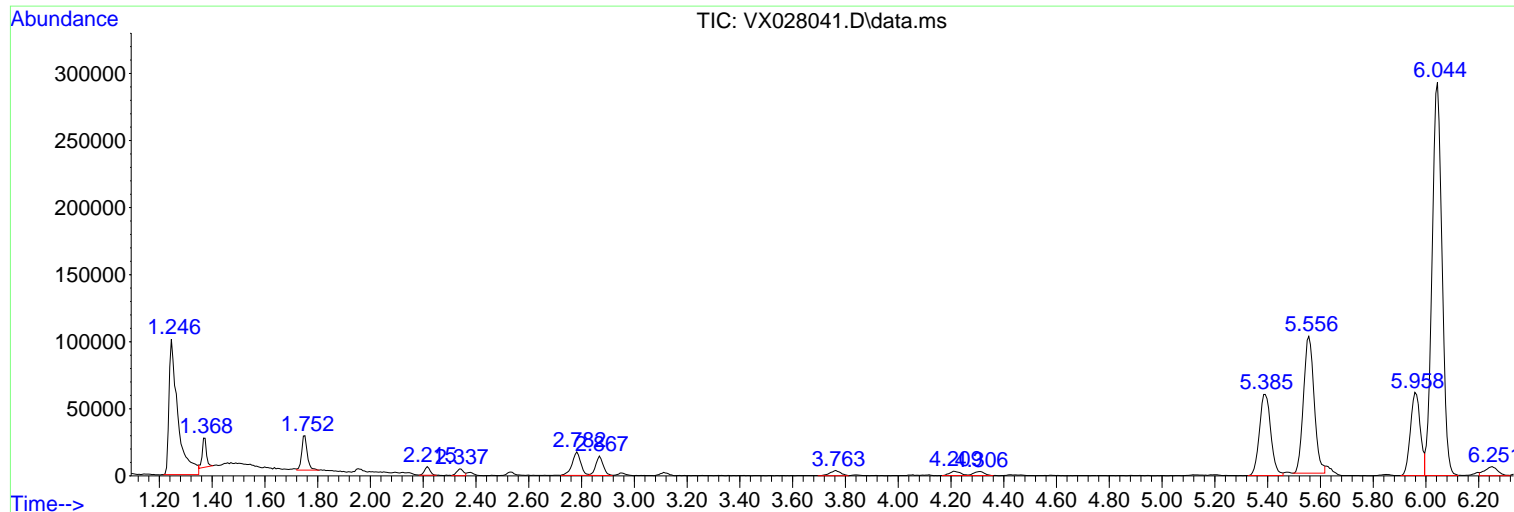
Sum of corrected areas: 4003437

Data Path : Z:\voasrv\HPCHEM1\MSVOA_X\Data\VX040822\
Data File : VX028041.D
Acq On : 08 Apr 2022 20:37
Operator : JC/MD
Sample : N2334-12
Misc : 5.0mL/MSVOA_X/WATER
ALS Vial : 26 Sample Multiplier: 1

Instrument :
MSVOA_X
ClientSampleId :
DUP040522

Quant Method : Z:\voasrv\HPCHEM1\MSVOA_X\Method\82X040722W.M
Quant Title : SW846 8260

TIC Library : C:\Database\NIST20.L
TIC Integration Parameters: LSCINT.P



Data Path : Z:\voasrv\HPCHEM1\MSVOA_X\Data\VX040822\
 Data File : VX028041.D
 Acq On : 08 Apr 2022 20:37
 Operator : JC/MD
 Sample : N2334-12
 Misc : 5.0mL/MSVOA_X/WATER
 ALS Vial : 26 Sample Multiplier: 1

Instrument :
 MSVOA_X
 ClientSampleId :
 DUP040522

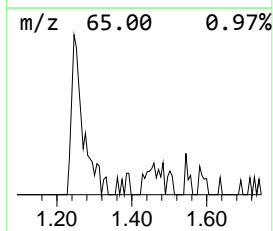
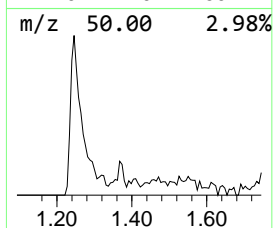
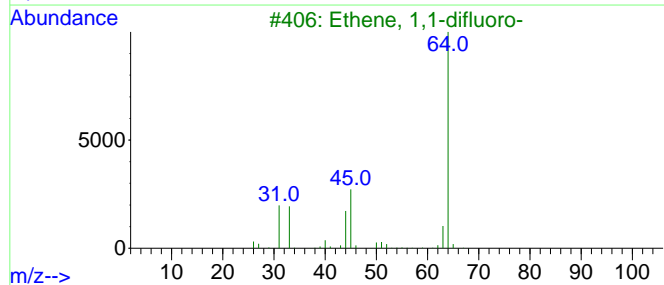
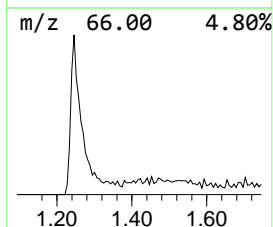
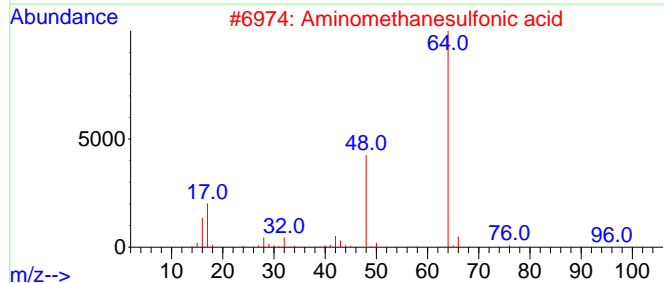
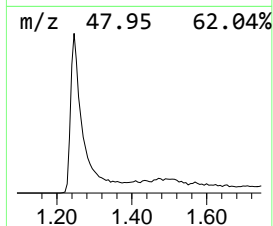
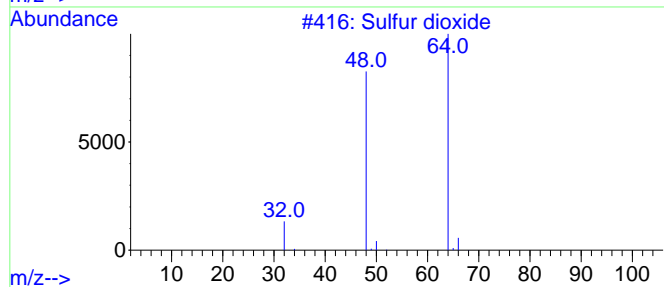
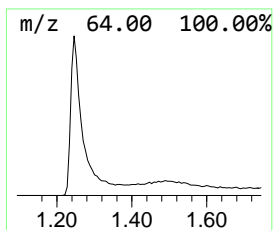
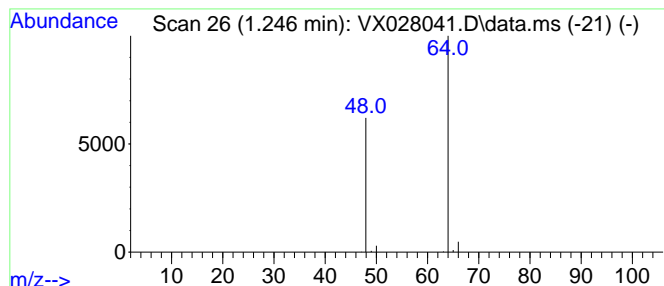
Quant Method : Z:\voasrv\HPCHEM1\MSVOA_X\Method\82X040722W.M
 Quant Title : SW846 8260

TIC Library : C:\Database\NIST20.L
 TIC Integration Parameters: LSCINT.P

 Peak Number 1 Sulfur dioxide Concentration Rank 1

R.T.	EstConc	Area	Relative to ISTD	R.T.
1.246	41.28 ug/l	238400	Pentafluorobenzene	5.556

Hit#	of	5	Tentative ID	MW	MolForm	CAS#	Qual
1			Sulfur dioxide	64	O2S	007446-09-5	83
2			Aminomethanesulfonic acid	111	CH5NO3S	013881-91-9	74
3			Ethene, 1,1-difluoro-	64	C2H2F2	000075-38-7	4
4			Ethyl Chloride	64	C2H5Cl	000075-00-3	3
5			Ethene, 1,2-difluoro-	64	C2H2F2	001691-13-0	3



Data Path : Z:\voasrv\HPCHEM1\MSVOA_X\Data\VX040822\
 Data File : VX028041.D
 Acq On : 08 Apr 2022 20:37
 Operator : JC/MD
 Sample : N2334-12
 Misc : 5.0mL/MSVOA_X/WATER
 ALS Vial : 26 Sample Multiplier: 1

Instrument :
 MSVOA_X
 ClientSampleId :
 DUP040522

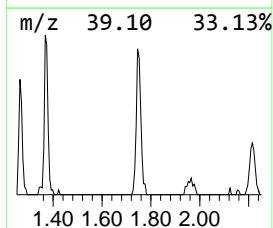
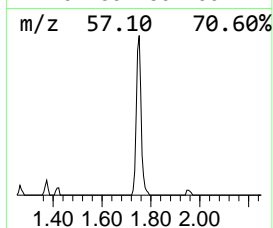
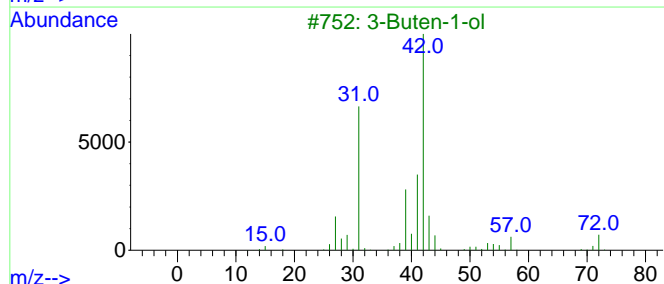
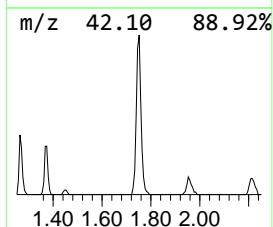
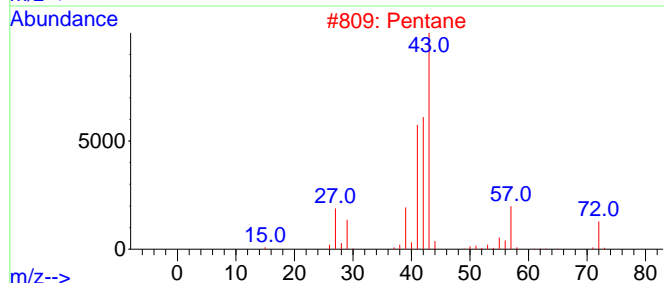
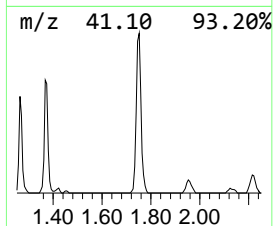
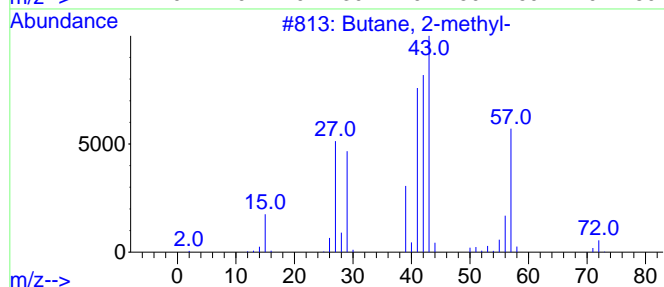
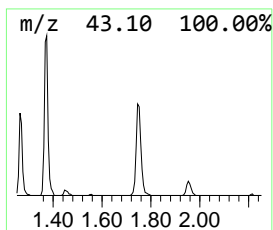
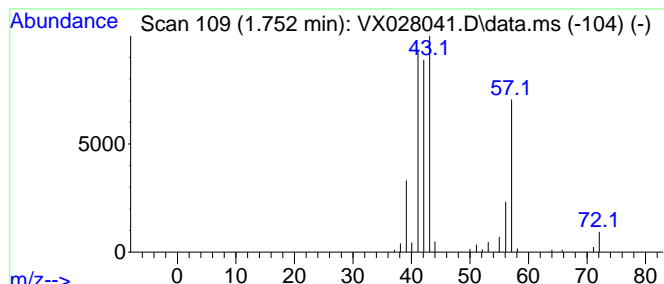
Quant Method : Z:\voasrv\HPCHEM1\MSVOA_X\Method\82X040722W.M
 Quant Title : SW846 8260

TIC Library : C:\Database\NIST20.L
 TIC Integration Parameters: LSCINT.P

 Peak Number 2 Butane, 2-methyl- Concentration Rank 3

R.T.	EstConc	Area	Relative to ISTD	R.T.
1.752	6.48 ug/l	37409	Pentafluorobenzene	5.556

Hit#	of	5	Tentative ID	MW	MolForm	CAS#	Qual
1			Butane, 2-methyl-	72	C5H12	000078-78-4	90
2			Pentane	72	C5H12	000109-66-0	40
3			3-Buten-1-ol	72	C4H8O	000627-27-0	28
4			1-Propene, 2-methyl-	56	C4H8	000115-11-7	10
5			3-Buten-2-ol	72	C4H8O	000598-32-3	9



Data Path : Z:\voasrv\HPCHEM1\MSVOA_X\Data\VX040822\
 Data File : VX028041.D
 Acq On : 08 Apr 2022 20:37
 Operator : JC/MD
 Sample : N2334-12
 Misc : 5.0mL/MSVOA_X/WATER
 ALS Vial : 26 Sample Multiplier: 1

Instrument :
 MSVOA_X
 ClientSampleId :
 DUP040522

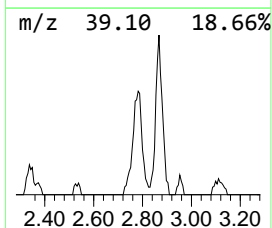
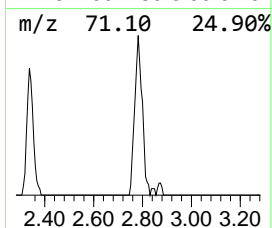
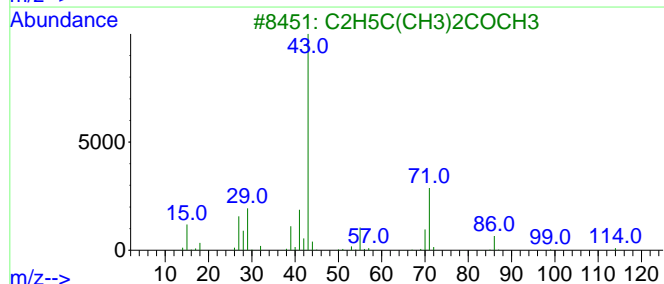
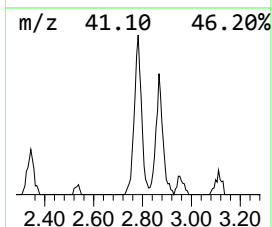
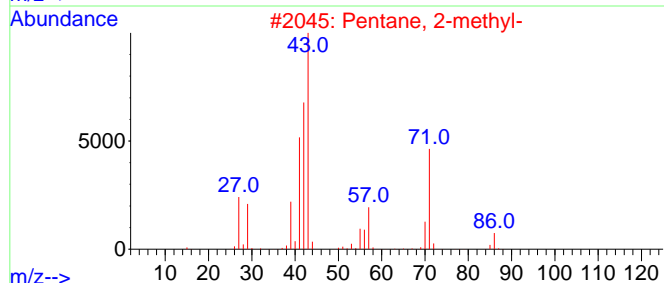
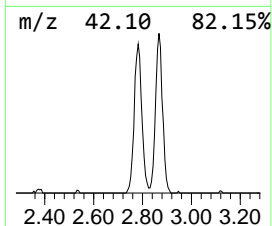
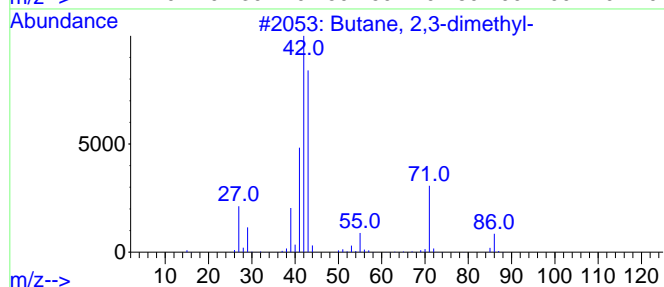
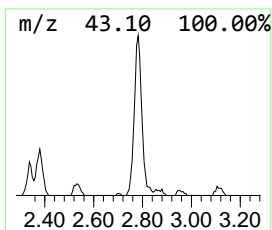
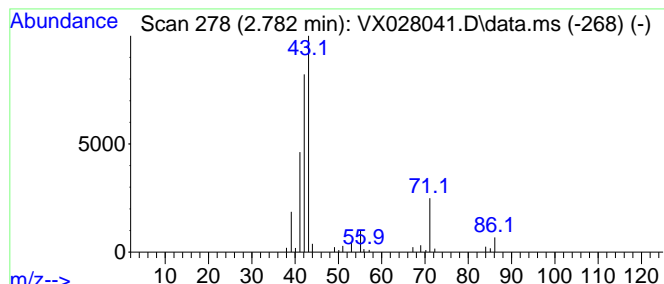
Quant Method : Z:\voasrv\HPCHEM1\MSVOA_X\Method\82X040722W.M
 Quant Title : SW846 8260

TIC Library : C:\Database\NIST20.L
 TIC Integration Parameters: LSCINT.P

 Peak Number 3 Butane, 2,3-dimethyl- Concentration Rank 2

R.T.	EstConc	Area	Relative to ISTD	R.T.
2.782	6.95 ug/l	40136	Pentafluorobenzene	5.556

Hit#	of	5	Tentative ID	MW	MolForm	CAS#	Qual
1			Butane, 2,3-dimethyl-	86	C6H14	000079-29-8	90
2			Pentane, 2-methyl-	86	C6H14	000107-83-5	64
3			C2H5C(CH3)2COCH3	114	C7H14O	020669-04-9	12
4			Furan, tetrahydro-2-methyl-	86	C5H10O	000096-47-9	10
5			Tetrahydrofuran	72	C4H8O	000109-99-9	9



Data Path : Z:\voasrv\HPCHEM1\MSVOA_X\Data\VX040822\
 Data File : VX028041.D
 Acq On : 08 Apr 2022 20:37
 Operator : JC/MD
 Sample : N2334-12
 Misc : 5.0mL/MSVOA_X/WATER
 ALS Vial : 26 Sample Multiplier: 1

Instrument :
 MSVOA_X
 ClientSampleId :
 DUP040522

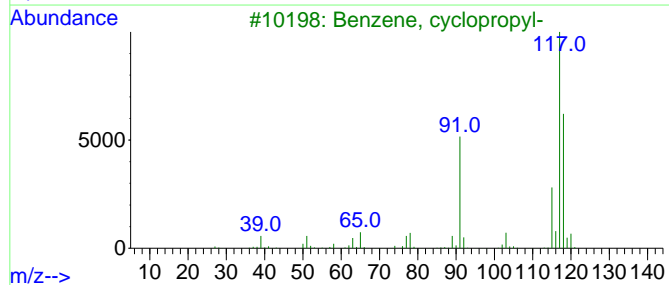
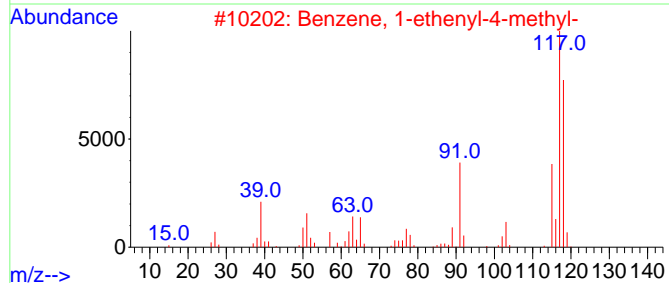
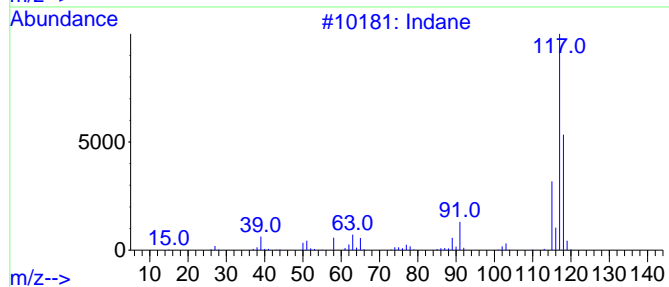
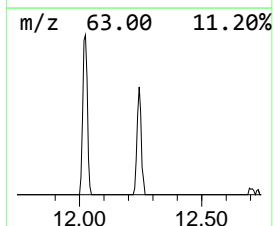
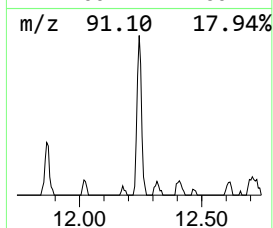
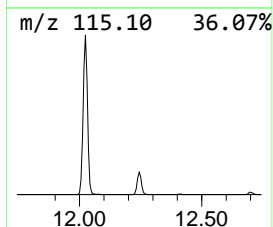
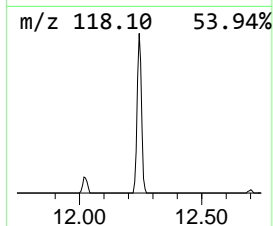
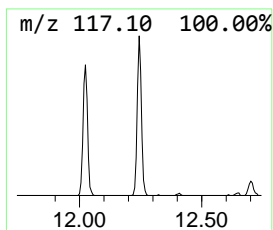
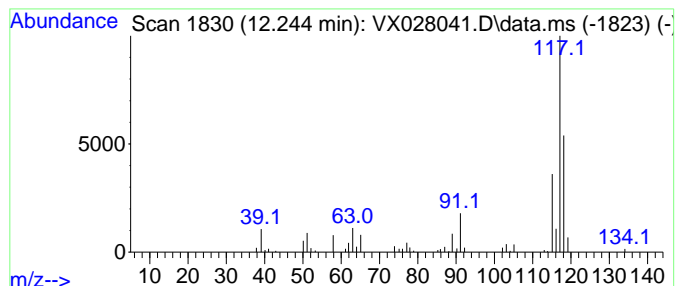
Quant Method : Z:\voasrv\HPCHEM1\MSVOA_X\Method\82X040722W.M
 Quant Title : SW846 8260

TIC Library : C:\Database\NIST20.L
 TIC Integration Parameters: LSCINT.P

 Peak Number 4 Indane Concentration Rank 4

R.T.	EstConc	Area	Relative to ISTD	R.T.
12.244	6.18 ug/l	49015	1,4-Dichlorobenzene-d4	12.024

Hit#	of 5	Tentative ID	MW	MolForm	CAS#	Qual
1		Indane	118	C9H10	000496-11-7	95
2		Benzene, 1-ethenyl-4-methyl-	118	C9H10	000622-97-9	83
3		Benzene, cyclopropyl-	118	C9H10	000873-49-4	83
4		Tetracyclo[3.3.1.0(2,8).0(4,6)]-...	118	C9H10	1000191-13-7	83
5		Benzene, 2-propenyl-	118	C9H10	000300-57-2	76



Data Path : Z:\voasrv\HPCHEM1\MSVOA_X\Data\VX040822\
Data File : VX028041.D
Acq On : 08 Apr 2022 20:37
Operator : JC/MD
Sample : N2334-12
Misc : 5.0mL/MSVOA_X/WATER
ALS Vial : 26 Sample Multiplier: 1

Instrument :
MSVOA_X
ClientSampleId :
DUP040522

Quant Method : Z:\voasrv\HPCHEM1\MSVOA_X\Method\82X040722W.M
Quant Title : SW846 8260

TIC Library : C:\Database\NIST20.L
TIC Integration Parameters: LSCINT.P

TIC Top Hit name	RT	EstConc	Units	Response	--Internal Standard--			
					#	RT	Resp	Conc
Sulfur dioxide	1.246	41.3	ug/l	238400	1	5.556	288781	50.0
Butane, 2-methyl-	1.752	6.5	ug/l	37409	1	5.556	288781	50.0
Butane, 2,3-dim...	2.782	7.0	ug/l	40136	1	5.556	288781	50.0
Indane	12.244	6.2	ug/l	49015	4	12.024	396654	50.0