

Data Path : Z:\VOASRV\HPCHEM1\MSVOA X\DATA\VX040919\
 Data File : VX008780.D
 Acq On : 09 Apr 2019 18:55
 Operator : JC/SP
 Sample : K2311-07
 Misc : 5.0mL/MSVOA X/WATER
 ALS Vial : 22 Sample Multiplier: 1

Instrument :
 MSVOA_X
 ClientSampleId :
 0240-COMP-CS-5-ELTRT

Quant Time: Apr 10 06:39:37 2019
 Quant Method : Z:\VOASRV\HPCHEM1\MSVOA_X\METHOD\82X040319W.M
 Quant Title : SW846 8260
 QLast Update : Thu Apr 04 04:47:41 2019
 Response via : Initial Calibration

Internal Standards	R.T.	QIon	Response	Conc	Units	Dev(Min)
1) Pentafluorobenzene	5.67	168	207625	50.00	ug/l	0.00
34) 1,4-Difluorobenzene	6.86	114	343430	50.00	ug/l	0.00
63) Chlorobenzene-d5	10.11	117	296307	50.00	ug/l	0.00
72) 1,4-Dichlorobenzene-d4	12.08	152	125574	50.00	ug/l	0.00

System Monitoring Compounds

33) 1,2-Dichloroethane-d4	6.06	65	142800	47.15	ug/l	0.00
Spiked Amount	50.000		Recovery	=	94.30%	
35) Dibromofluoromethane	5.50	113	103565	47.17	ug/l	0.00
Spiked Amount	50.000		Recovery	=	94.34%	
50) Toluene-d8	8.71	98	428844	49.05	ug/l	0.00
Spiked Amount	50.000		Recovery	=	98.10%	
62) 4-Bromofluorobenzene	11.13	95	141696	45.70	ug/l	0.00
Spiked Amount	50.000		Recovery	=	91.40%	

Target Compounds

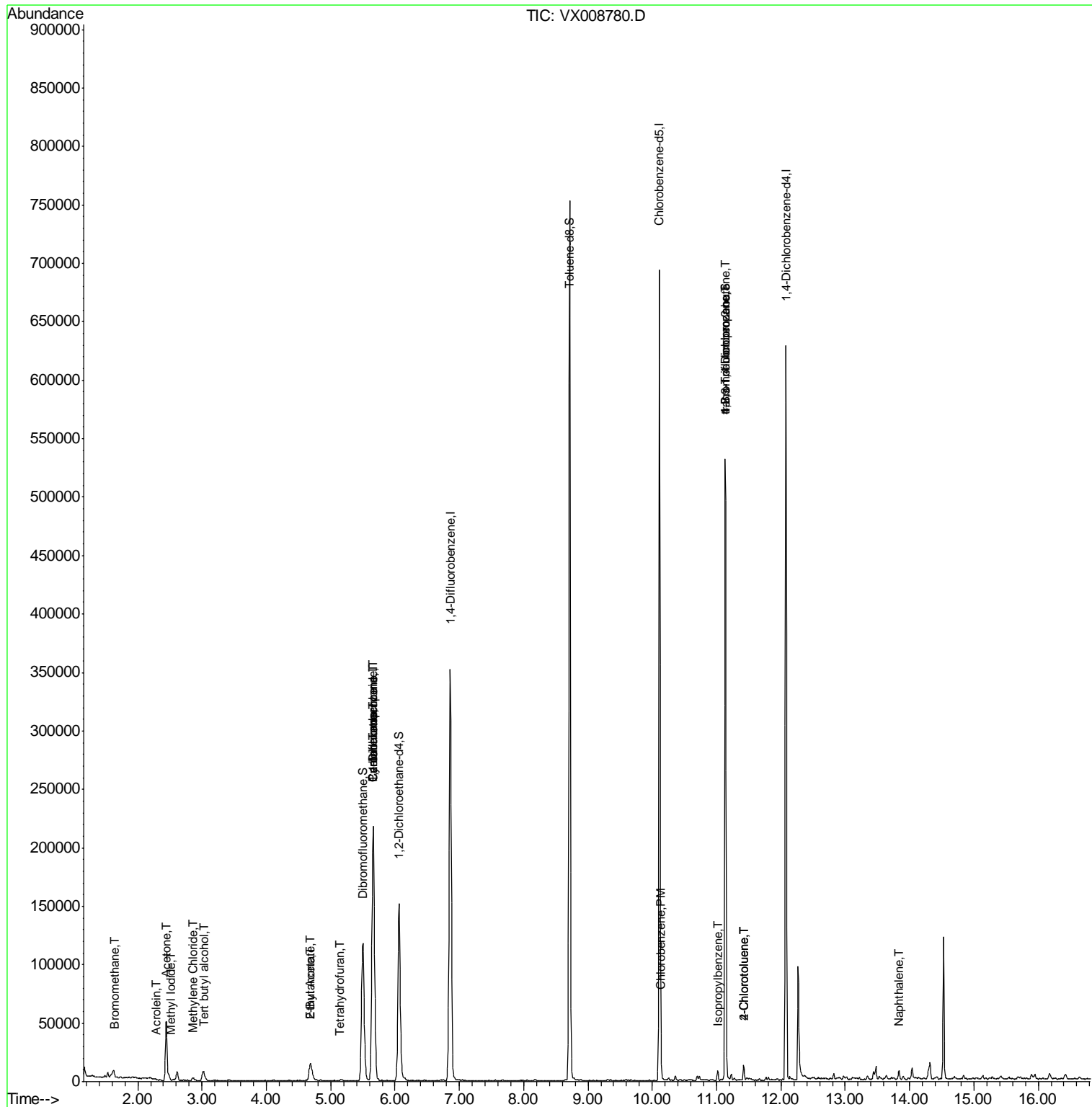
					Qvalue	
3) Chloromethane	1.32	50	394	Below Cal	#	69
5) Bromomethane	1.64	94	392	2.122	ug/l #	78
6) Chloroethane	1.72	64	190	Below Cal	#	43
10) Methyl Iodide	2.52	142	23	4.013	ug/l #	42
11) Tert butyl alcohol	3.03	59	7078	9.983	ug/l #	72
13) Acrolein	2.29	56	176	0.501	ug/l #	79
16) Acetone	2.44	43	55998	32.105	ug/l	96
17) Carbon Disulfide	2.57	76	1254	Below Cal	#	90
20) Methylene Chloride	2.86	84	1051	0.360	ug/l #	91
25) 2-Butanone	4.68	43	17966	6.517	ug/l	97
28) Bromochloromethane	5.02	49	18	Below Cal	#	22
29) Tetrahydrofuran	5.15	42	422	0.231	ug/l #	66
31) Cyclohexane	5.66	56	4748	0.907	ug/l #	1
36) 1,1-Dichloropropene	5.66	75	17151	4.569	ug/l #	51
37) Ethyl Acetate	4.68	43	17966	3.585	ug/l #	75
38) Carbon Tetrachloride	5.67	117	19742	6.354	ug/l #	17
65) Chlorobenzene	10.14	112	1911	0.291	ug/l	92
73) Isopropylbenzene	11.02	105	4032	0.387	ug/l	99
76) 1,2,3-Trichloropropane	11.13	75	72317	20.964	ug/l #	34
79) 2-Chlorotoluene	11.42	91	5269	0.719	ug/l	97
81) trans-1,4-Dichloro-2-buten	11.13	75	72317	57.787	ug/l #	9
82) 4-Chlorotoluene	11.42	91	5269	0.621	ug/l	95
95) Naphthalene	13.83	128	4399	0.426	ug/l #	95

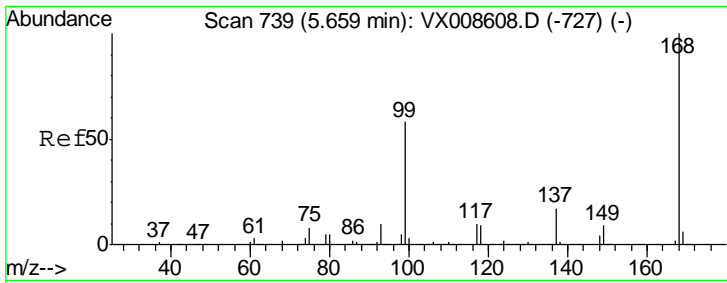
(#) = qualifier out of range (m) = manual integration (+) = signals summed

Data Path : Z:\VOASRV\HPCHEM1\MSVOA X\DATA\VX040919\
 Data File : VX008780.D
 Acq On : 09 Apr 2019 18:55
 Operator : JC/SP
 Sample : K2311-07
 Misc : 5.0mL/MSVOA X/WATER
 ALS Vial : 22 Sample Multiplier: 1

Instrument :
 MSVOA_X
 ClientSampled :
 0240-COMP-CS-5-ELTRT

Quant Time: Apr 10 06:39:37 2019
 Quant Method : Z:\VOASRV\HPCHEM1\MSVOA_X\METHOD\82X040319W.M
 Quant Title : SW846 8260
 QLast Update : Thu Apr 04 04:47:41 2019
 Response via : Initial Calibration

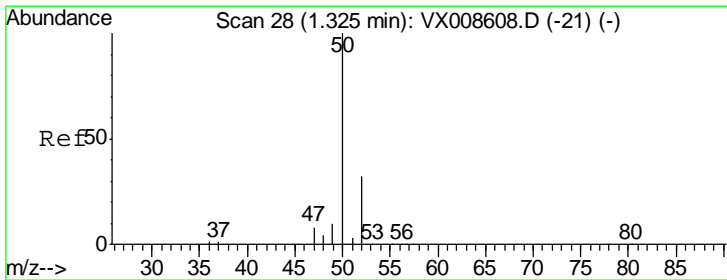
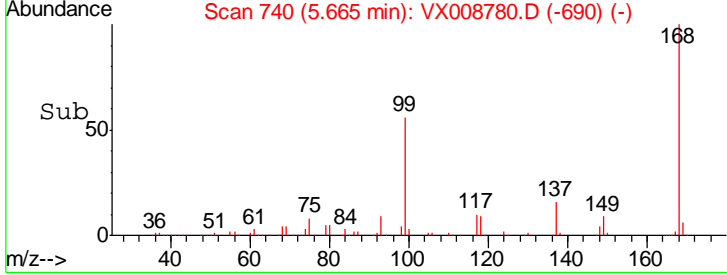
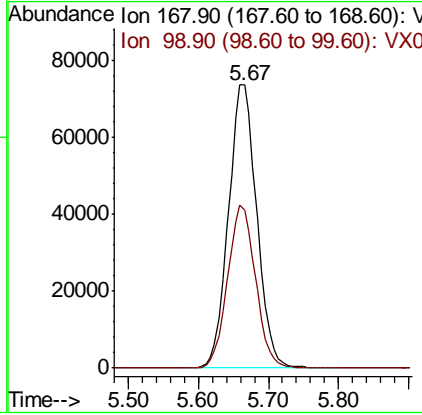
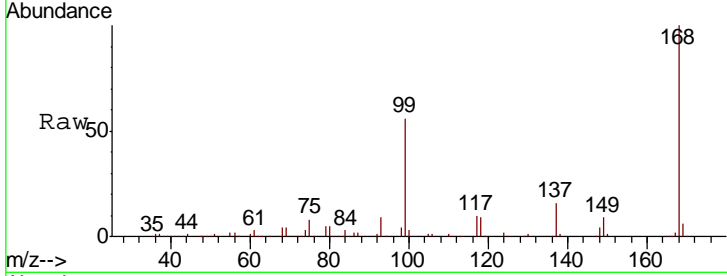




#1
 Pentafluorobenzene
 Concen: 50.000 ug/l
 RT: 5.67 min Scan# 740
 Delta R.T. 0.01 min
 Lab File: VX008780.D
 Acq: 09 Apr 2019 18:55

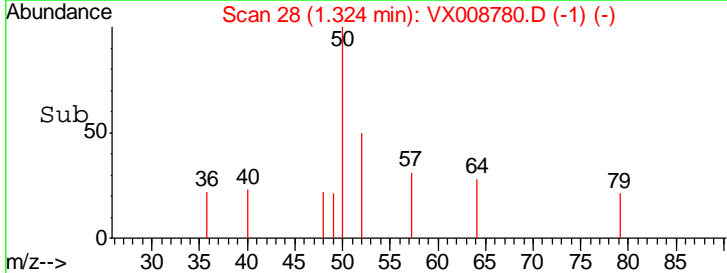
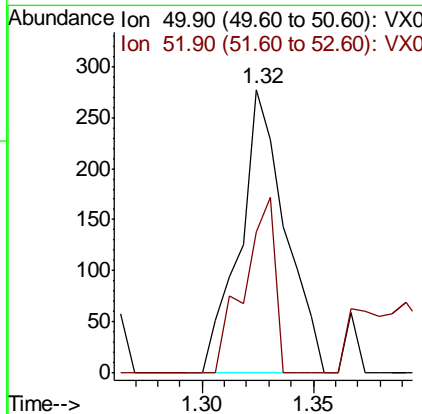
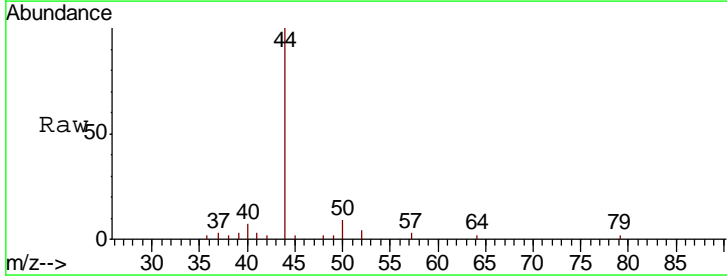
Instrument : MSVOA_X
 ClientSampled : 0240-COMP-CS-5-ELTRT

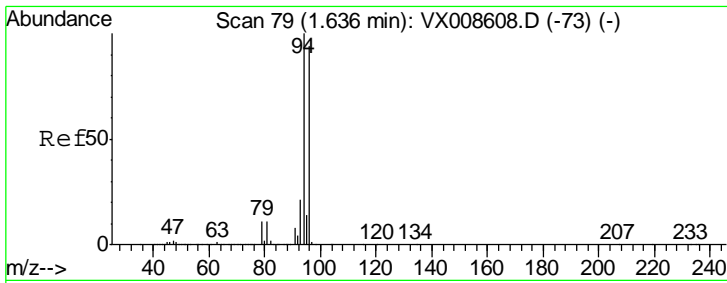
Tgt Ion: 168 Resp: 207625
 Ion Ratio Lower Upper
 168 100
 99 55.7 46.7 70.1



#3
 Chloromethane
 Concen: Below Cal
 RT: 1.32 min Scan# 28
 Delta R.T. 0.00 min
 Lab File: VX008780.D
 Acq: 09 Apr 2019 18:55

Tgt Ion: 50 Resp: 394
 Ion Ratio Lower Upper
 50 100
 52 49.6 25.8 38.8#

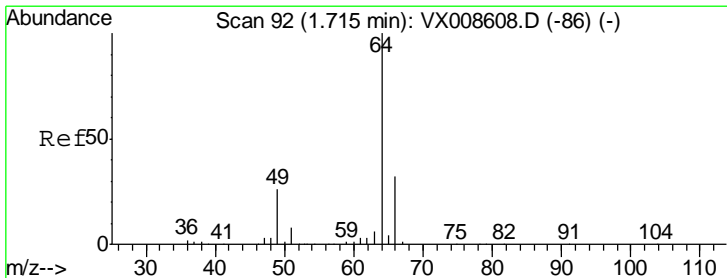
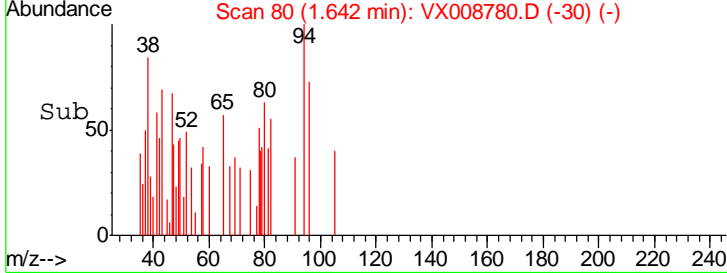
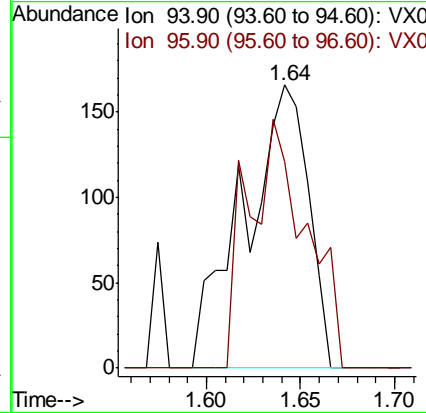
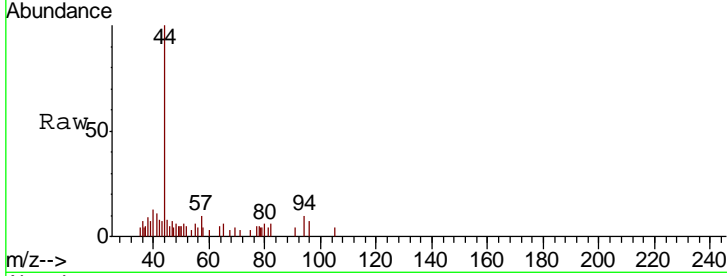




#5
 Bromomethane
 Concen: 2.122 ug/l
 RT: 1.64 min Scan# 80
 Delta R.T. 0.01 min
 Lab File: VX008780.D
 Acq: 09 Apr 2019 18:55

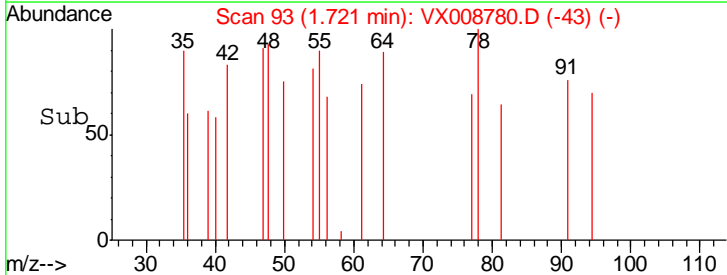
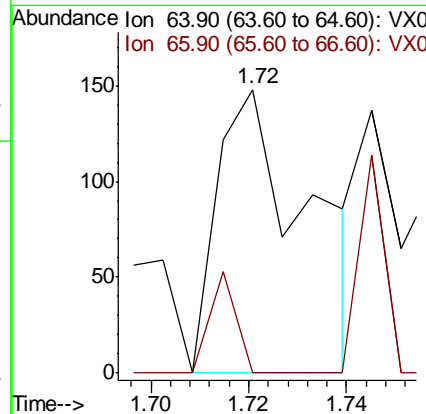
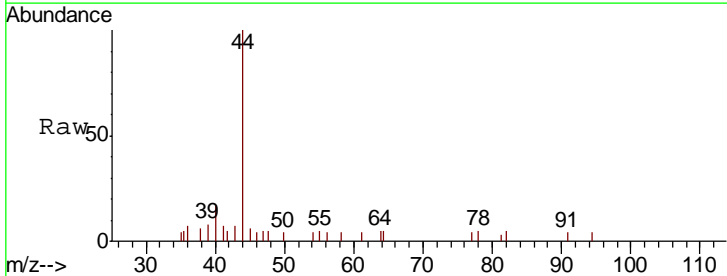
Instrument :
 MSVOA_X
ClientSampled :
 0240-COMP-CS-5-ELTRT

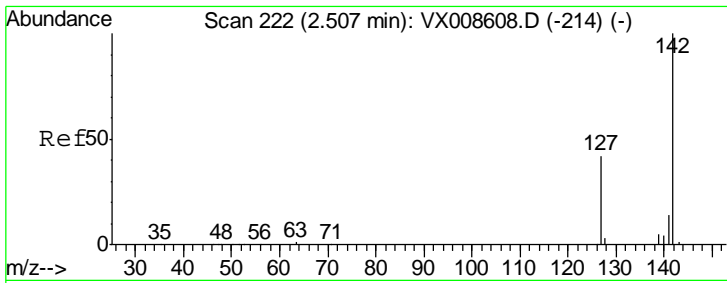
Tgt Ion: 94 Resp: 392
 Ion Ratio Lower Upper
 94 100
 96 72.9 75.2 112.8#



#6
 Chloroethane
 Concen: Below Cal
 RT: 1.72 min Scan# 93
 Delta R.T. 0.01 min
 Lab File: VX008780.D
 Acq: 09 Apr 2019 18:55

Tgt Ion: 64 Resp: 190
 Ion Ratio Lower Upper
 64 100
 66 0.0 25.4 38.0#

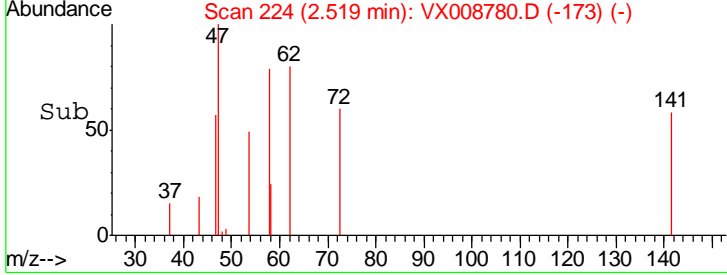
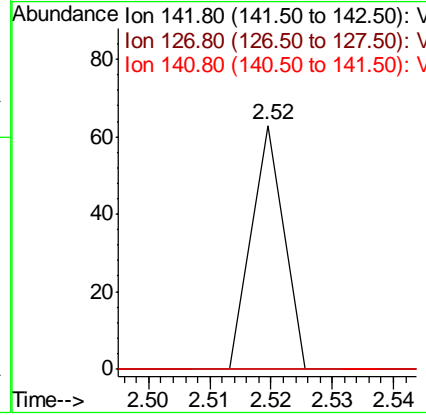
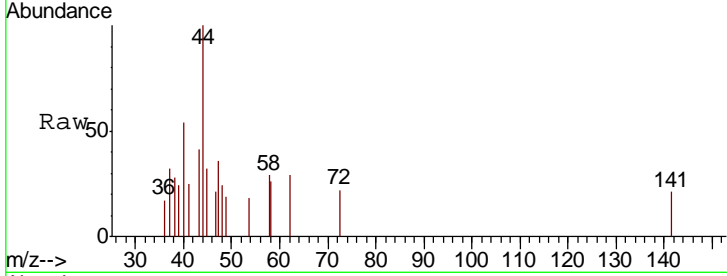




#10
 Methyl Iodide
 Concen: 4.013 ug/l
 RT: 2.52 min Scan# 224
 Delta R.T. 0.01 min
 Lab File: VX008780.D
 Acq: 09 Apr 2019 18:55

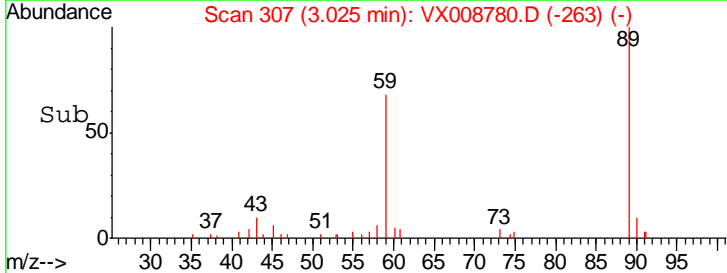
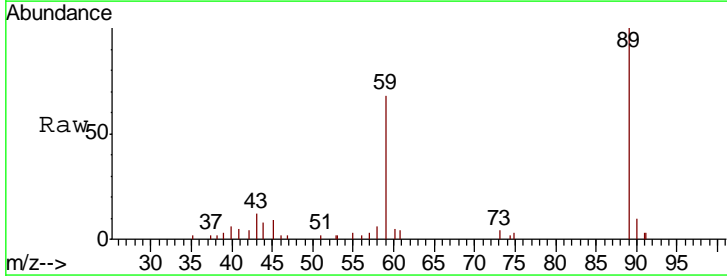
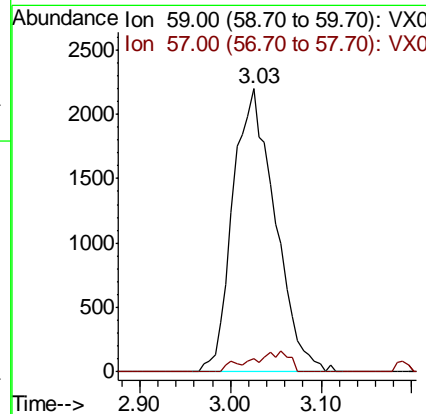
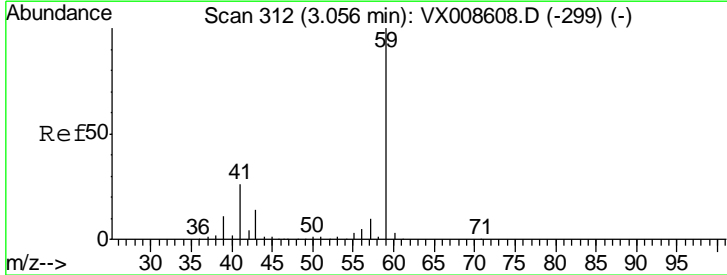
Instrument :
 MSVOA_X
ClientSampled :
 0240-COMP-CS-5-ELTRT

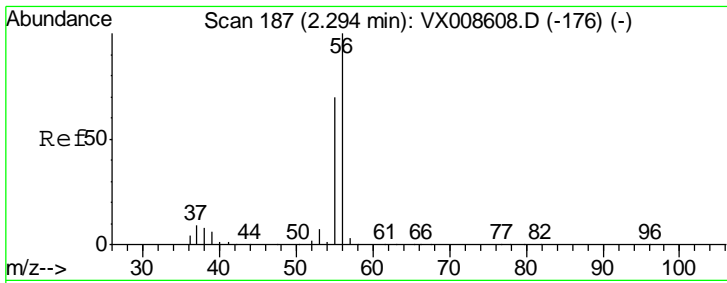
Tgt Ion	Resp	Lower	Upper
142	100		
127	0.0	33.0	49.6#
141	0.0	11.4	17.2#



#11
 Tert butyl alcohol
 Concen: 9.983 ug/l
 RT: 3.03 min Scan# 307
 Delta R.T. -0.03 min
 Lab File: VX008780.D
 Acq: 09 Apr 2019 18:55

Tgt Ion	Resp	Lower	Upper
59	100		
57	0.0	8.3	12.5#

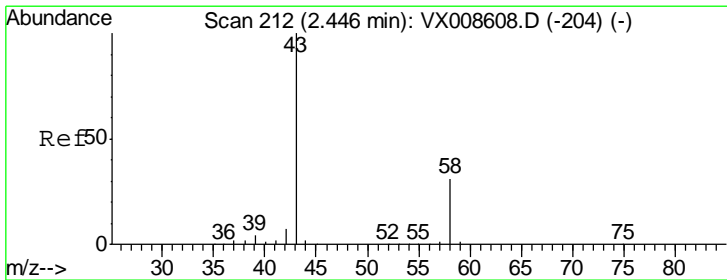
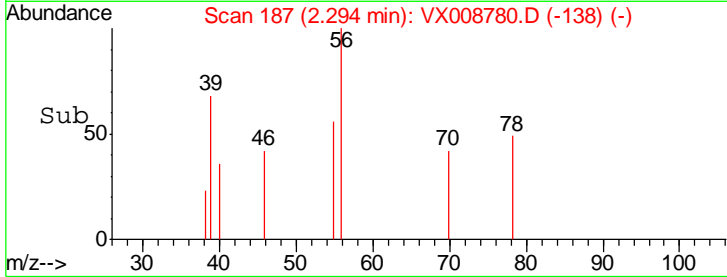
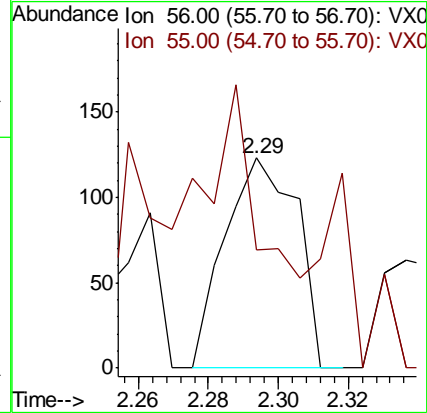
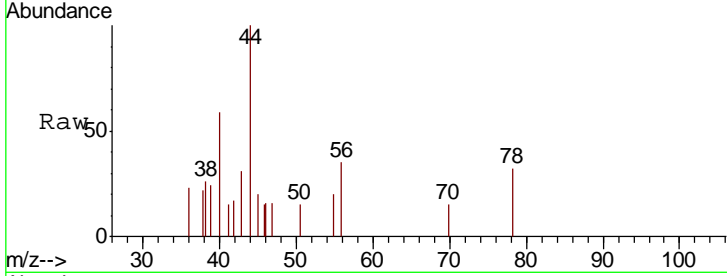




#13
 Acrolein
 Concen: 0.501 ug/l
 RT: 2.29 min Scan# 187
 Delta R.T. -0.00 min
 Lab File: VX008780.D
 Acq: 09 Apr 2019 18:55

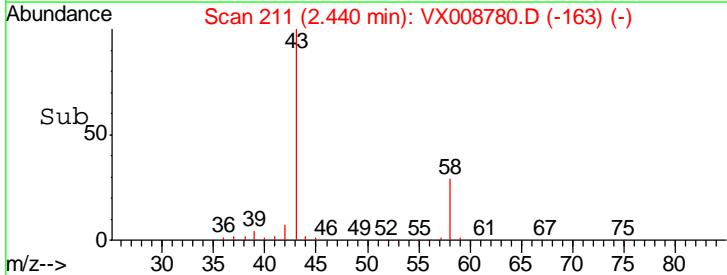
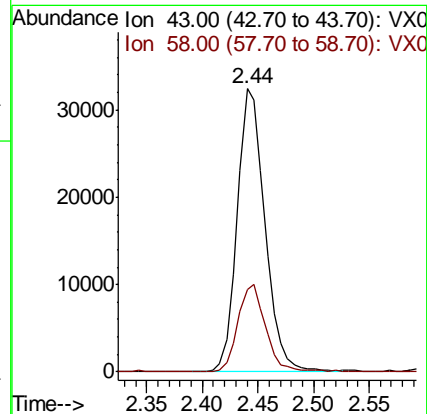
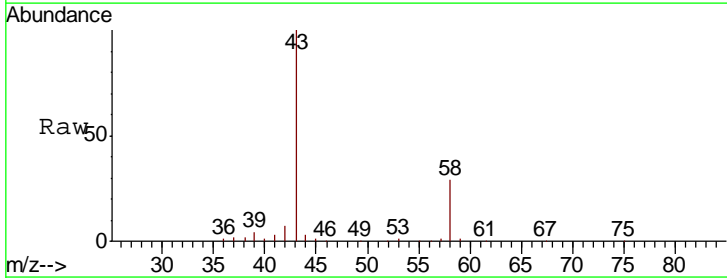
Instrument :
 MSVOA_X
 ClientSampled :
 0240-COMP-CS-5-ELTRT

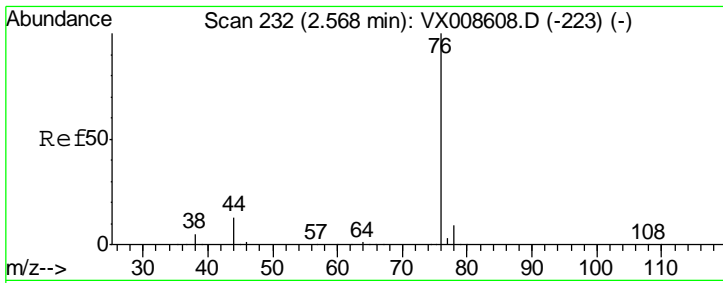
Tgt Ion: 56 Resp: 176
 Ion Ratio Lower Upper
 56 100
 55 55.1 58.0 87.0#



#16
 Acetone
 Concen: 32.105 ug/l
 RT: 2.44 min Scan# 211
 Delta R.T. -0.01 min
 Lab File: VX008780.D
 Acq: 09 Apr 2019 18:55

Tgt Ion: 43 Resp: 55998
 Ion Ratio Lower Upper
 43 100
 58 29.0 24.8 37.2

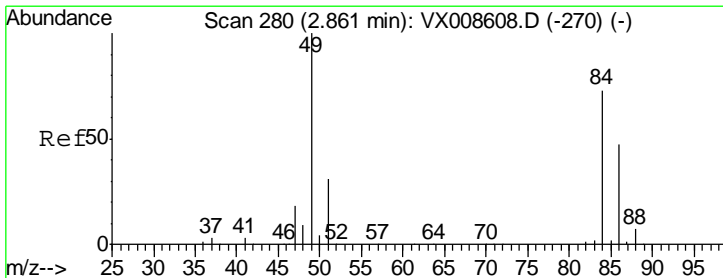
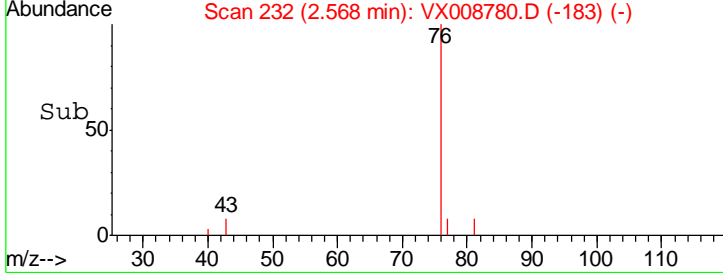
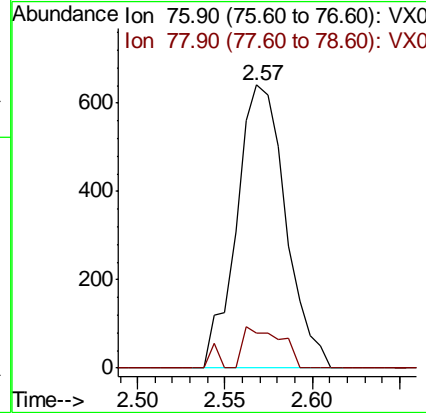
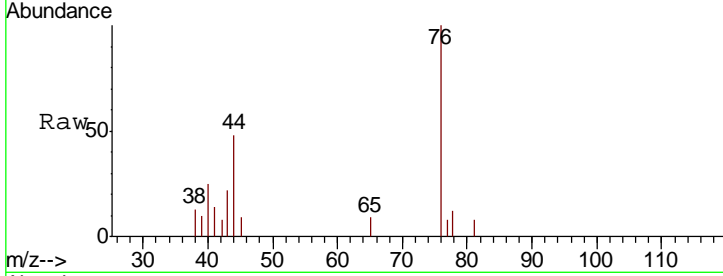




#17
 Carbon Disulfide
 Concen: Below Cal
 RT: 2.57 min Scan# 232
 Delta R.T. 0.00 min
 Lab File: VX008780.D
 Acq: 09 Apr 2019 18:55

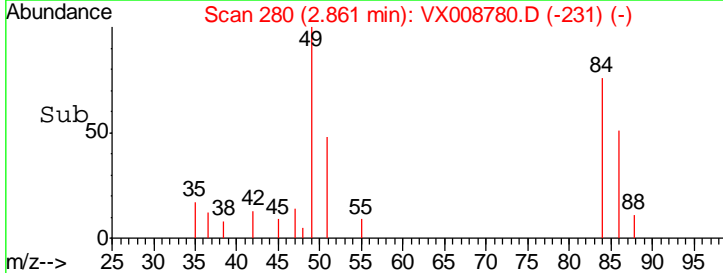
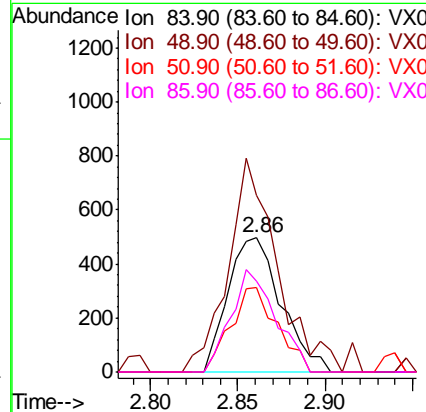
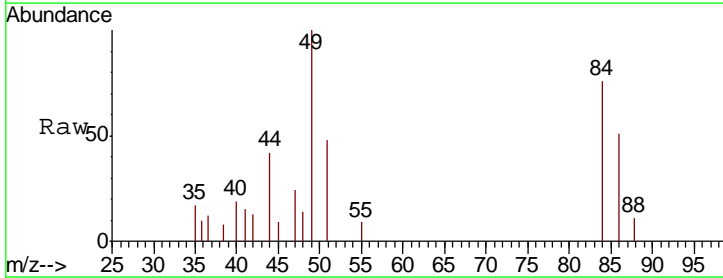
Instrument : MSVOA_X
 ClientSampled : 0240-COMP-CS-5-ELTRT

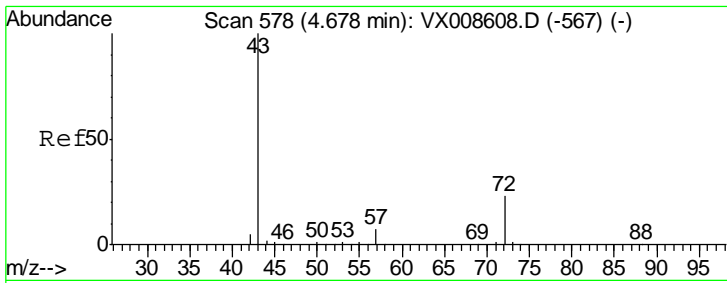
Tgt Ion	Resp	Lower	Upper
76	1254		
78	12.5	7.1	10.7#



#20
 Methylene Chloride
 Concen: 0.360 ug/l
 RT: 2.86 min Scan# 280
 Delta R.T. -0.00 min
 Lab File: VX008780.D
 Acq: 09 Apr 2019 18:55

Tgt Ion	Resp	Lower	Upper
84	1051		
49	131.5	109.7	164.5
51	62.7	33.6	50.4#
86	67.5	51.4	77.2

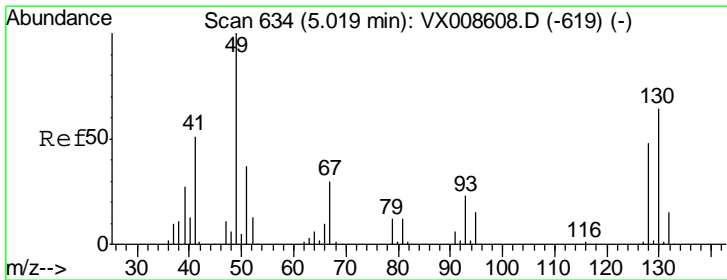
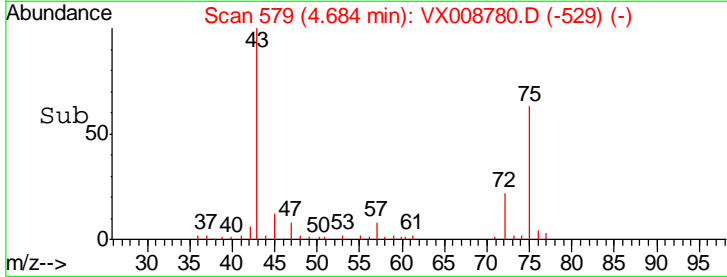
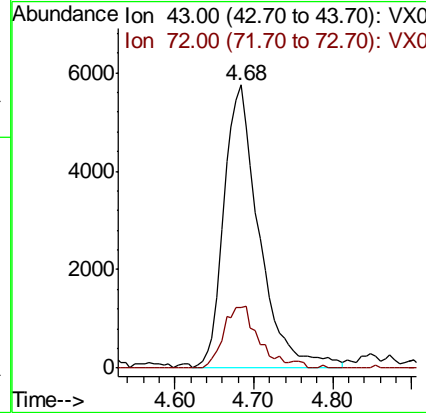
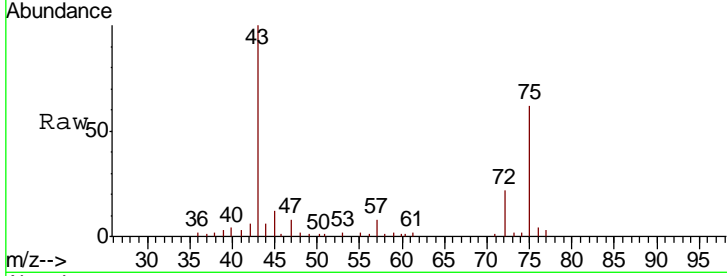




#25
 2-Butanone
 Concen: 6.517 ug/l
 RT: 4.68 min Scan# 579
 Delta R.T. 0.01 min
 Lab File: VX008780.D
 Acq: 09 Apr 2019 18:55

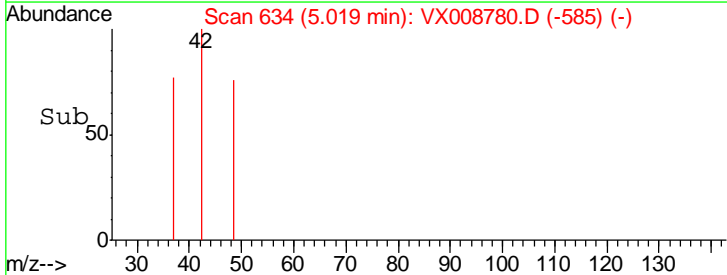
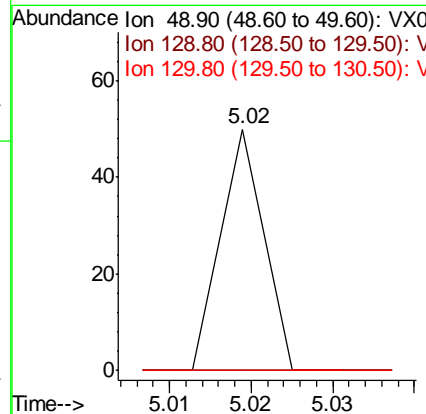
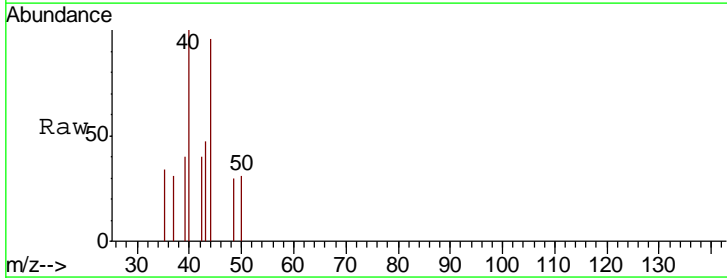
Instrument : MSVOA_X
 ClientSampled : 0240-COMP-CS-5-ELTRT

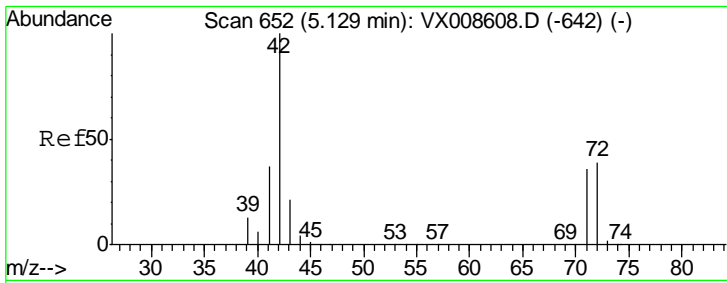
Tgt Ion	Resp	Lower	Upper
43	17966		
72	21.5	18.2	27.4



#28
 Bromochloromethane
 Concen: Below Cal
 RT: 5.02 min Scan# 634
 Delta R.T. -0.00 min
 Lab File: VX008780.D
 Acq: 09 Apr 2019 18:55

Tgt Ion	Resp	Lower	Upper
49	18		
129	0.0	0.0	3.6
130	0.0	49.3	73.9#

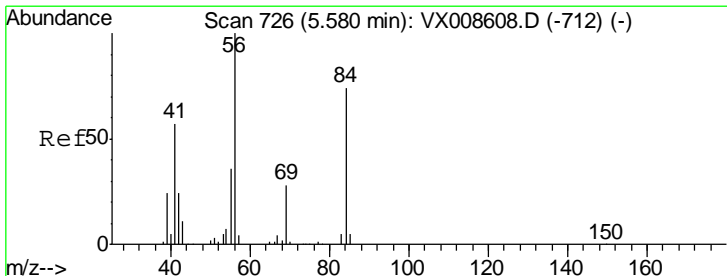
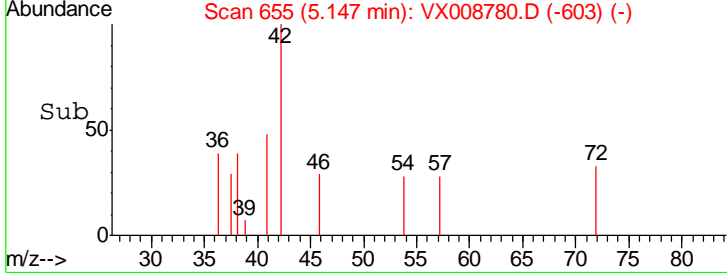
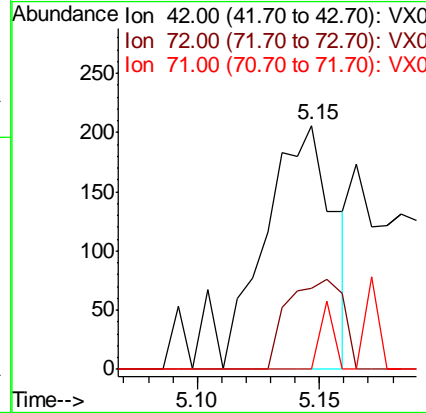
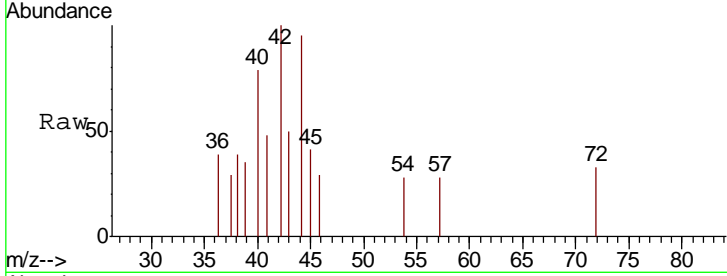




#29
 Tetrahydrofuran
 Concen: 0.231 ug/l
 RT: 5.15 min Scan# 655
 Delta R.T. 0.02 min
 Lab File: VX008780.D
 Acq: 09 Apr 2019 18:55

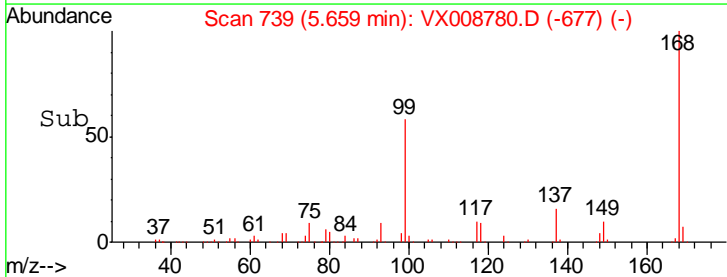
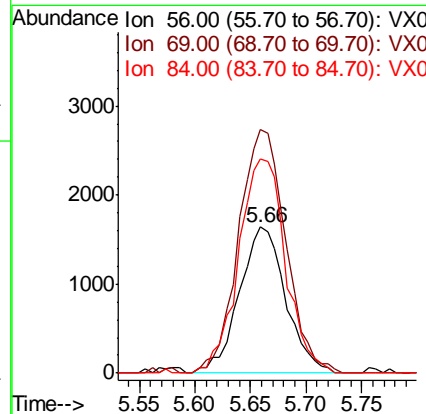
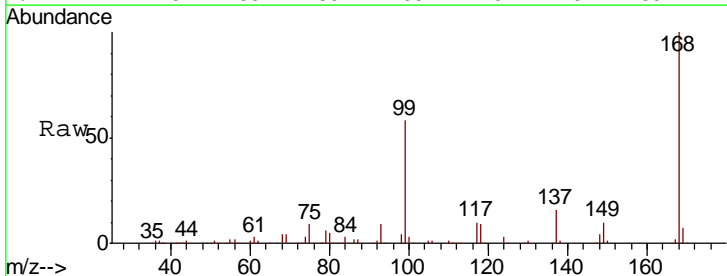
Instrument :
 MSVOA_X
ClientSampled :
 0240-COMP-CS-5-ELTRT

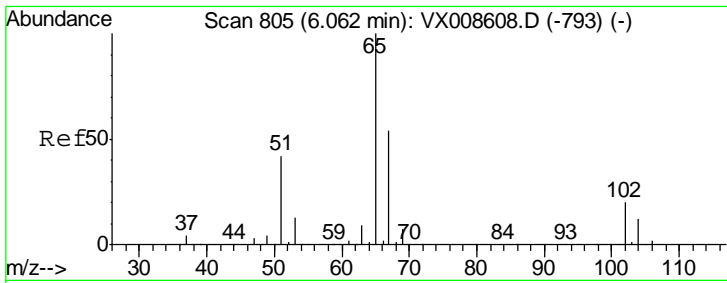
Tgt Ion	Resp	Lower	Upper
42	100		
72	28.4	30.5	45.7#
71	5.0	28.6	43.0#



#31
 Cyclohexane
 Concen: 0.907 ug/l
 RT: 5.66 min Scan# 739
 Delta R.T. 0.08 min
 Lab File: VX008780.D
 Acq: 09 Apr 2019 18:55

Tgt Ion	Resp	Lower	Upper
56	100		
69	166.4	22.6	33.8#
84	146.5	59.3	88.9#

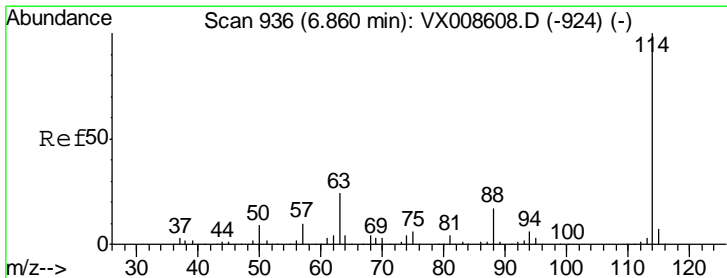
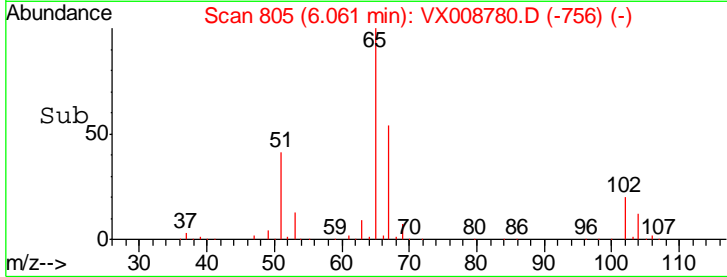
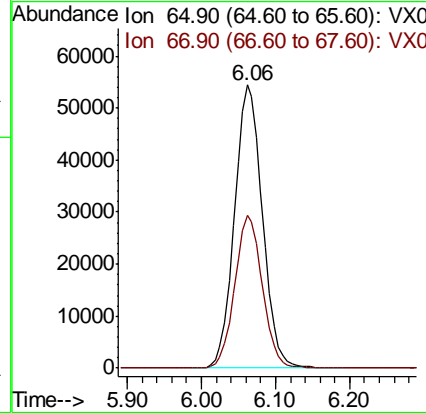
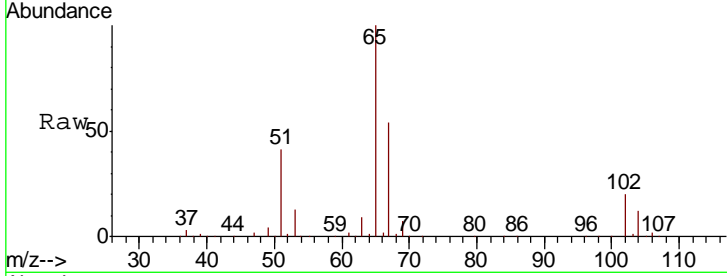




#33
 1,2-Dichloroethane-d4
 Concen: 47.155 ug/l
 RT: 6.06 min Scan# 805
 Delta R.T. -0.00 min
 Lab File: VX008780.D
 Acq: 09 Apr 2019 18:55

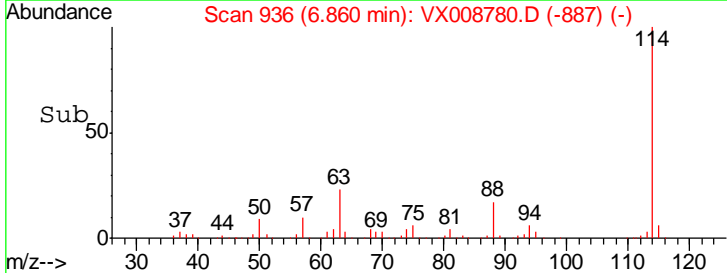
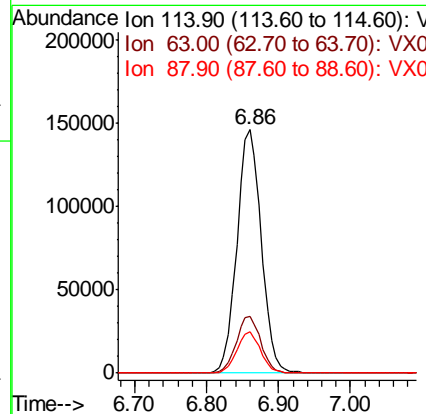
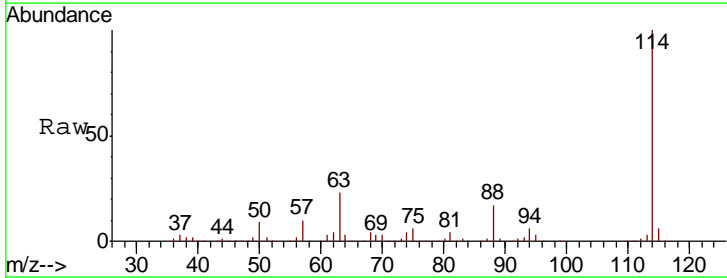
Instrument :
 MSVOA_X
 ClientSampled :
 0240-COMP-CS-5-ELTRT

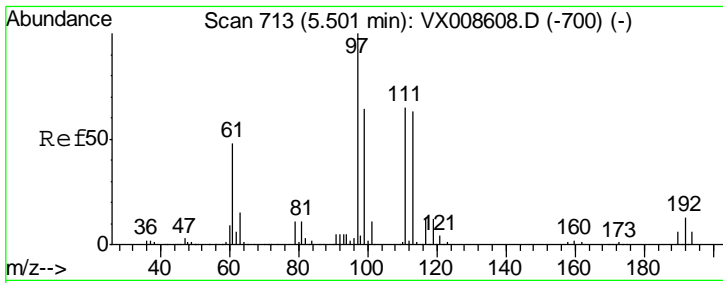
Tgt Ion: 65 Resp: 142800
 Ion Ratio Lower Upper
 65 100
 67 53.3 0.0 107.2



#34
 1,4-Difluorobenzene
 Concen: 50.000 ug/l
 RT: 6.86 min Scan# 936
 Delta R.T. -0.00 min
 Lab File: VX008780.D
 Acq: 09 Apr 2019 18:55

Tgt Ion: 114 Resp: 343430
 Ion Ratio Lower Upper
 114 100
 63 23.4 0.0 47.2
 88 17.2 0.0 34.0

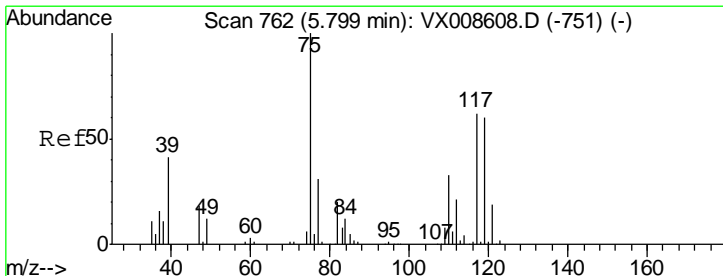
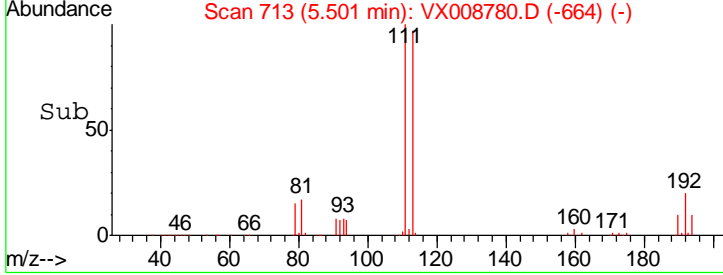
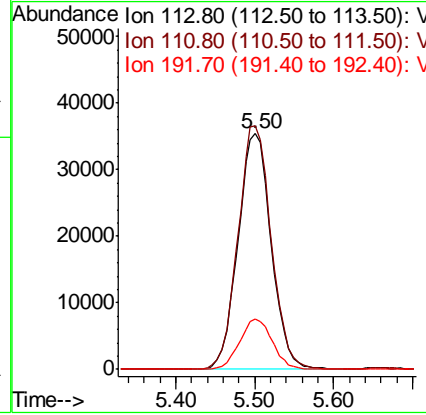
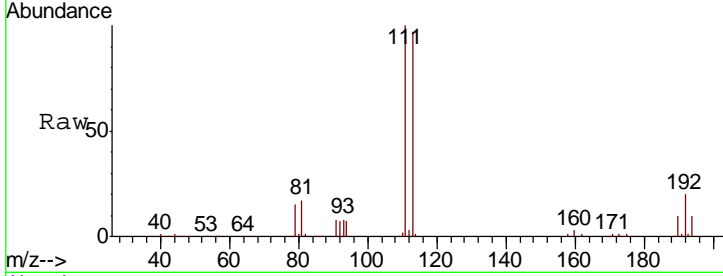




#35
 Dibromofluoromethane
 Concen: 47.166 ug/l
 RT: 5.50 min Scan# 713
 Delta R.T. -0.00 min
 Lab File: VX008780.D
 Acq: 09 Apr 2019 18:55

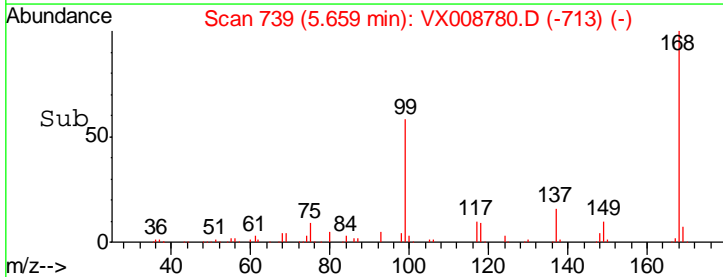
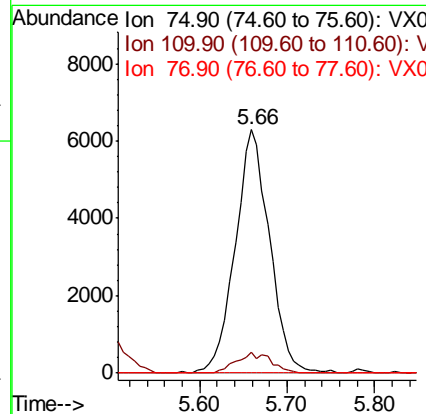
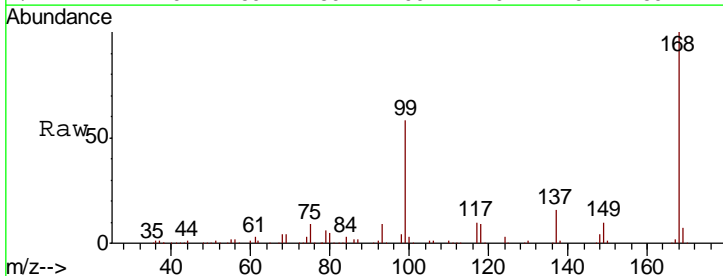
Instrument :
 MSVOA_X
ClientSampleId :
 0240-COMP-CS-5-ELTRT

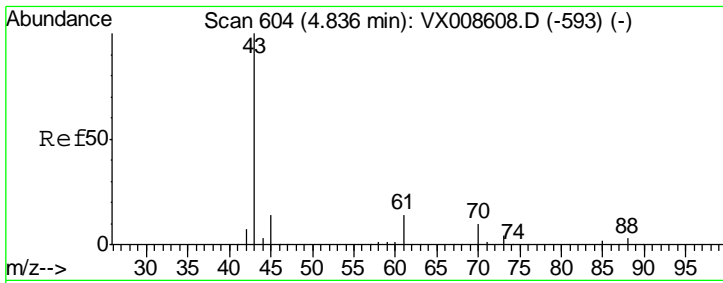
Tgt Ion	Resp	Lower	Upper
113	103565		
113	100		
111	103.3	83.4	125.2
192	21.0	16.1	24.1



#36
 1,1-Dichloropropene
 Concen: 4.569 ug/l
 RT: 5.66 min Scan# 739
 Delta R.T. -0.14 min
 Lab File: VX008780.D
 Acq: 09 Apr 2019 18:55

Tgt Ion	Resp	Lower	Upper
75	17151		
75	100		
110	8.5	16.4	49.2#
77	0.0	24.7	37.1#

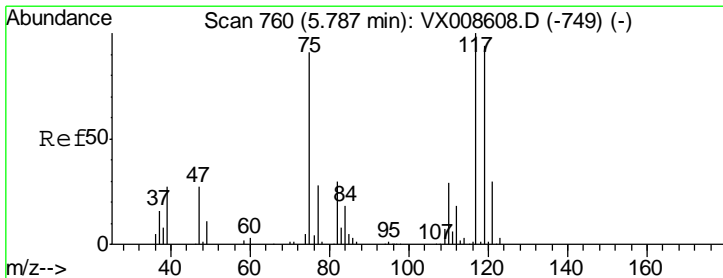
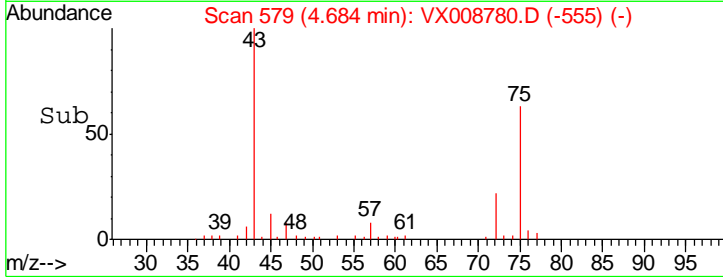
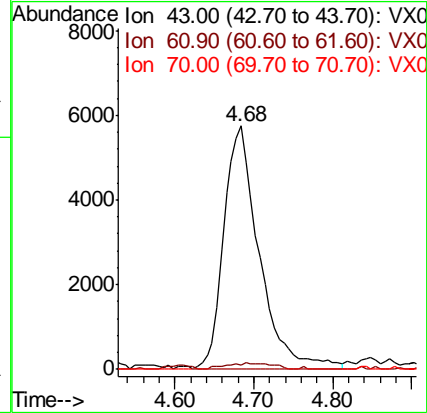
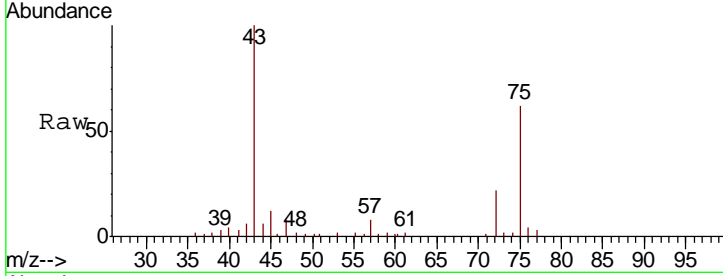




#37
 Ethyl Acetate
 Concen: 3.585 ug/l
 RT: 4.68 min Scan# 579
 Delta R.T. -0.15 min
 Lab File: VX008780.D
 Acq: 09 Apr 2019 18:55

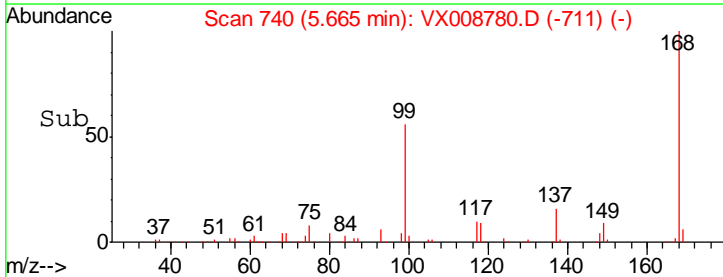
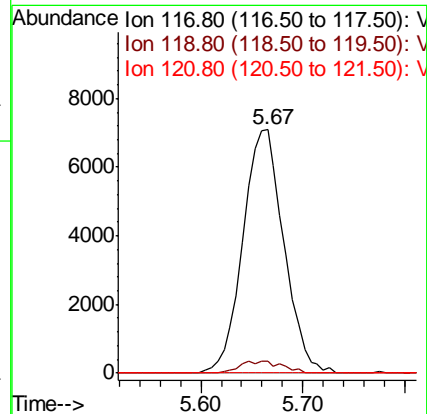
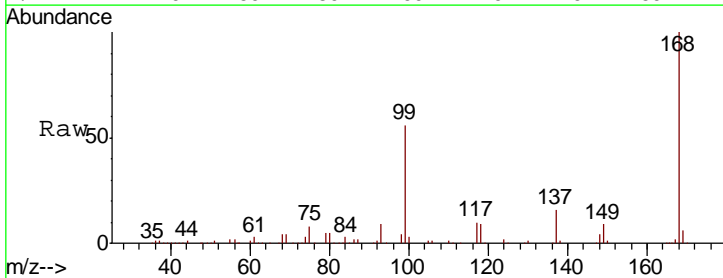
Instrument :
 MSVOA_X
 ClientSampled :
 0240-COMP-CS-5-ELTRT

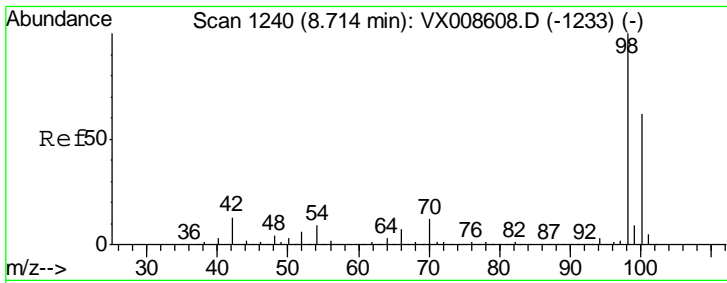
Tgt Ion	Resp	Lower	Upper
43	17966		
61	3.4	10.3	15.5#
70	0.0	7.6	11.4#



#38
 Carbon Tetrachloride
 Concen: 6.354 ug/l
 RT: 5.67 min Scan# 740
 Delta R.T. -0.12 min
 Lab File: VX008780.D
 Acq: 09 Apr 2019 18:55

Tgt Ion	Resp	Lower	Upper
117	19742		
119	4.7	75.0	112.6#
121	0.0	24.3	36.5#

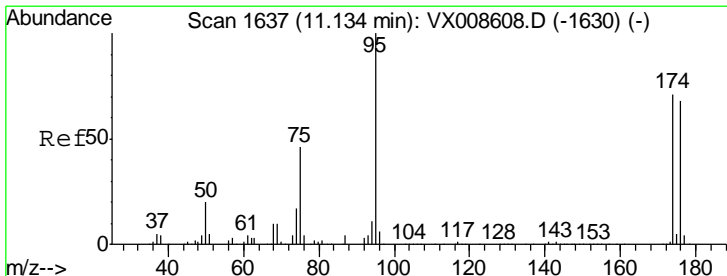
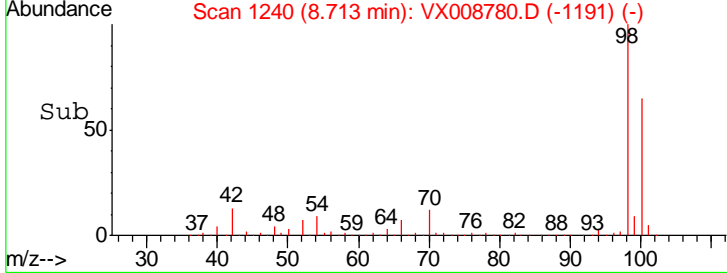
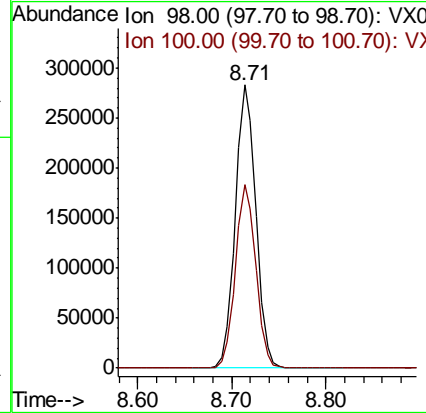
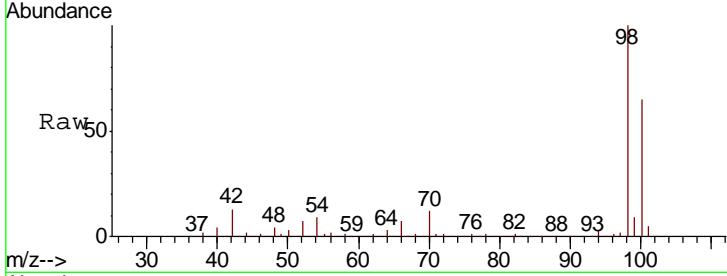




#50
 Toluene-d8
 Concen: 49.050 ug/l
 RT: 8.71 min Scan# 1240
 Delta R.T. -0.00 min
 Lab File: VX008780.D
 Acq: 09 Apr 2019 18:55

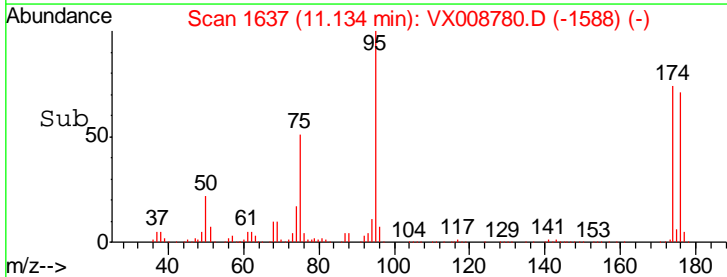
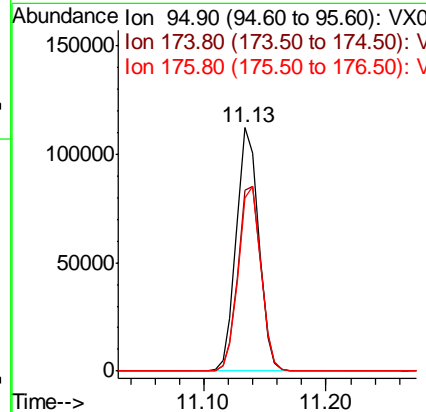
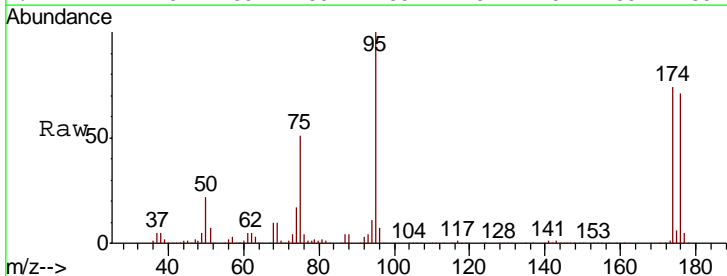
Instrument :
 MSVOA_X
ClientSampled :
 0240-COMP-CS-5-ELTRT

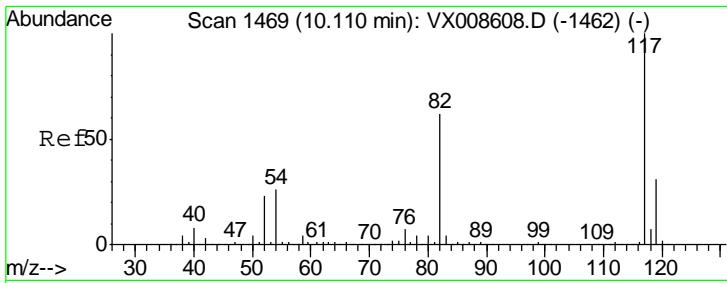
Tgt Ion: 98 Resp: 428844
 Ion Ratio Lower Upper
 98 100
 100 64.2 51.4 77.0



#62
 4-Bromofluorobenzene
 Concen: 45.703 ug/l
 RT: 11.13 min Scan# 1637
 Delta R.T. -0.00 min
 Lab File: VX008780.D
 Acq: 09 Apr 2019 18:55

Tgt Ion: 95 Resp: 141696
 Ion Ratio Lower Upper
 95 100
 174 78.0 0.0 151.8
 176 76.1 0.0 145.8

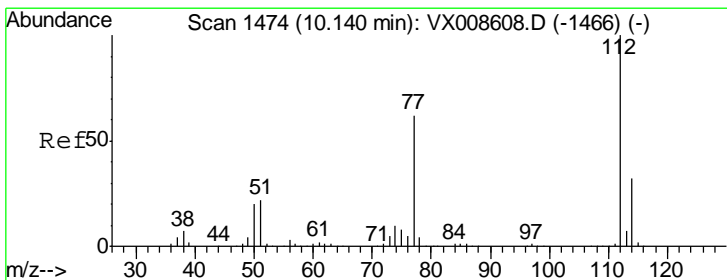
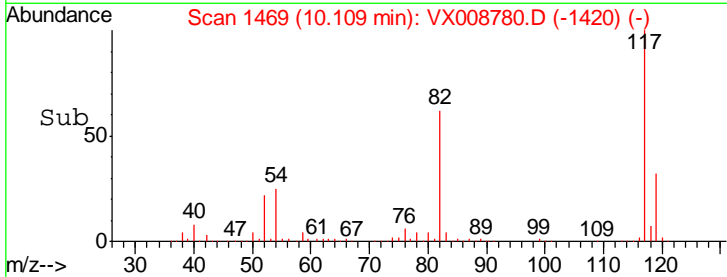
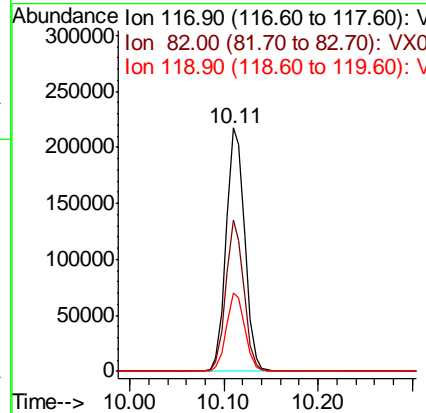
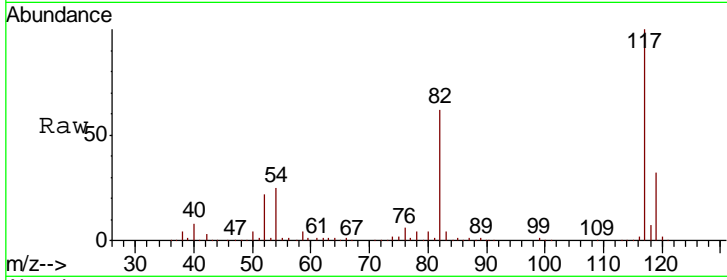




#63
 Chlorobenzene-d5
 Concen: 50.000 ug/l
 RT: 10.11 min Scan# 1469
 Delta R.T. -0.00 min
 Lab File: VX008780.D
 Acq: 09 Apr 2019 18:55

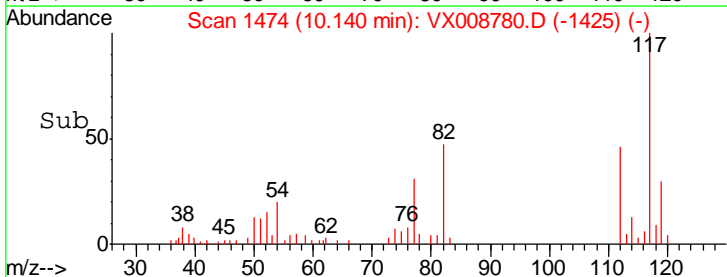
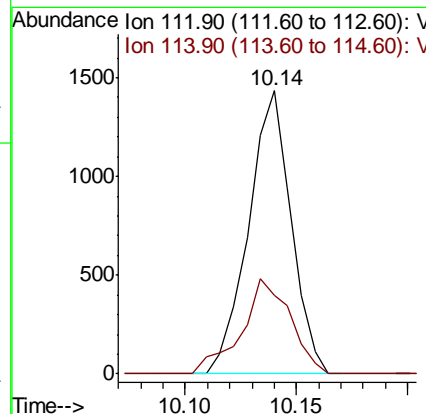
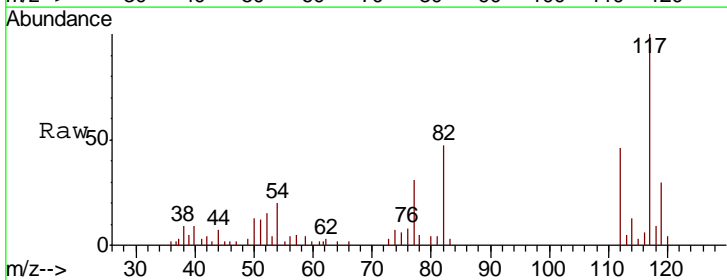
Instrument :
 MSVOA_X
 ClientSampled :
 0240-COMP-CS-5-ELTRT

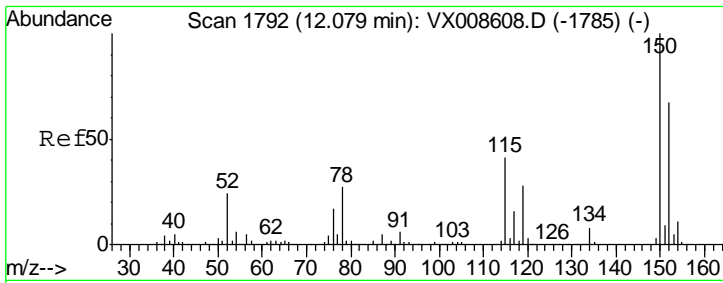
Tgt Ion	Resp	Lower	Upper
117	296307		
82	62.2	49.6	74.4
119	32.2	25.0	37.4



#65
 Chlorobenzene
 Concen: 0.291 ug/l
 RT: 10.14 min Scan# 1474
 Delta R.T. -0.00 min
 Lab File: VX008780.D
 Acq: 09 Apr 2019 18:55

Tgt Ion	Resp	Lower	Upper
112	1911		
114	27.8	25.8	38.8

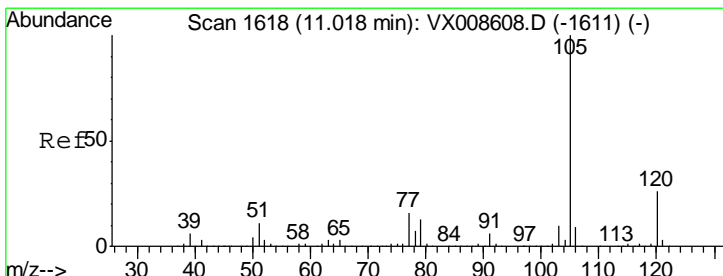
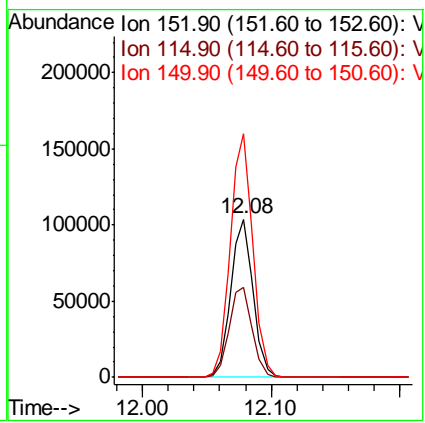
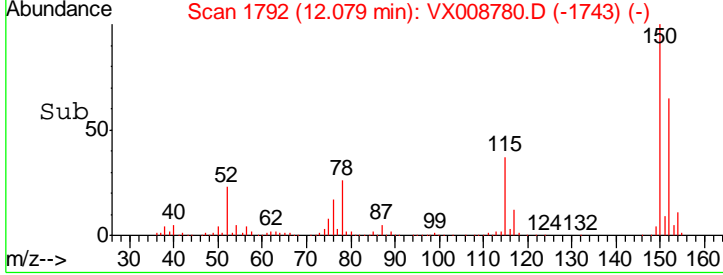
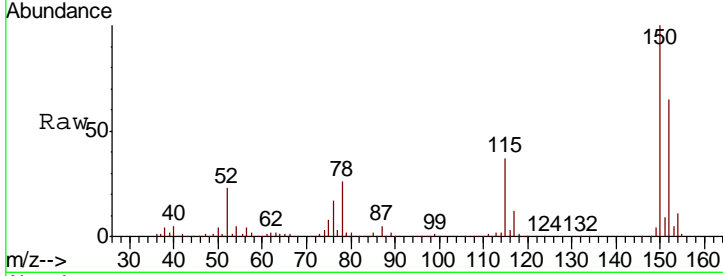




#72
 1,4-Dichlorobenzene-d4
 Concen: 50.000 ug/l
 RT: 12.08 min Scan# 1792
 Delta R.T. -0.00 min
 Lab File: VX008780.D
 Acq: 09 Apr 2019 18:55

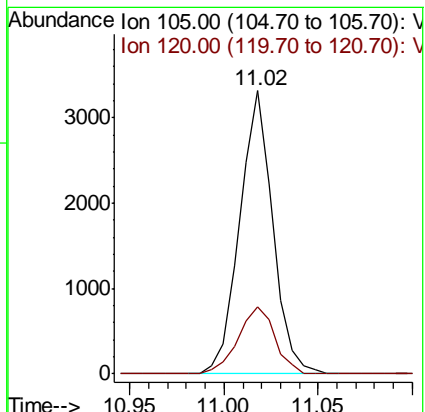
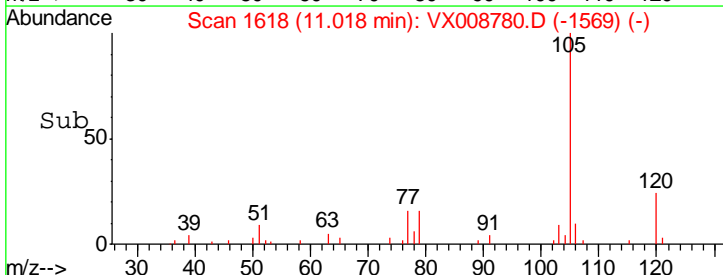
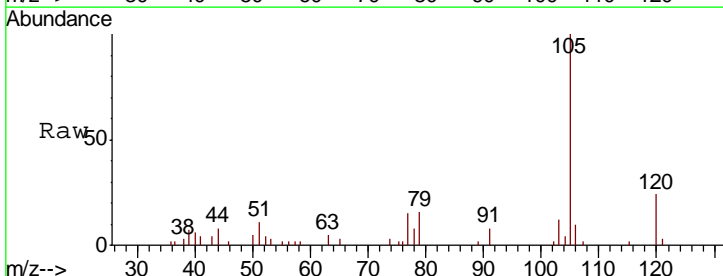
Instrument : MSVOA_X
 ClientSampled : 0240-COMP-CS-5-ELTRT

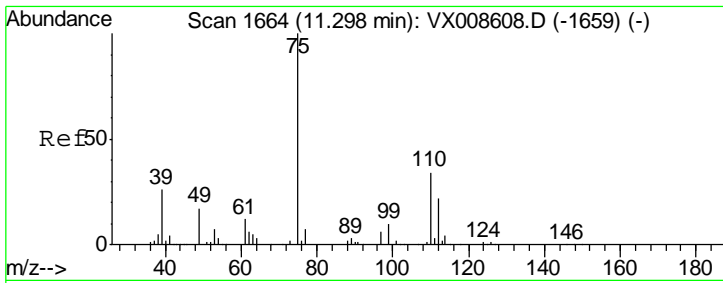
Tgt Ion	Resp	Lower	Upper
152	100		
115	59.2	43.5	130.5
150	155.6	0.0	348.8



#73
 Isopropylbenzene
 Concen: 0.387 ug/l
 RT: 11.02 min Scan# 1618
 Delta R.T. -0.00 min
 Lab File: VX008780.D
 Acq: 09 Apr 2019 18:55

Tgt Ion	Resp	Lower	Upper
105	100		
120	26.3	12.9	38.6

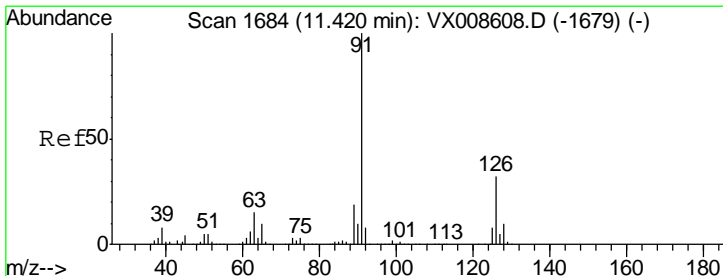
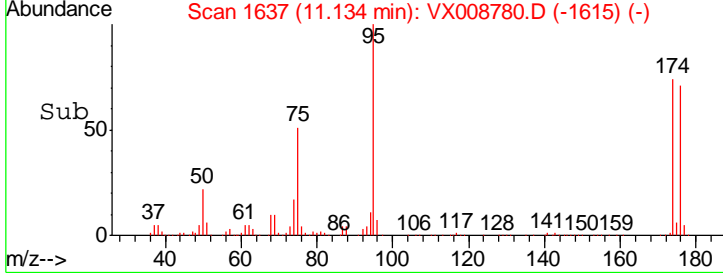
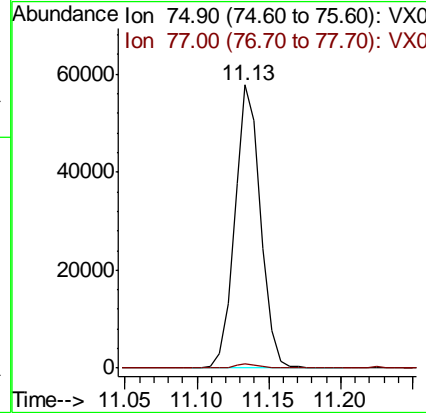
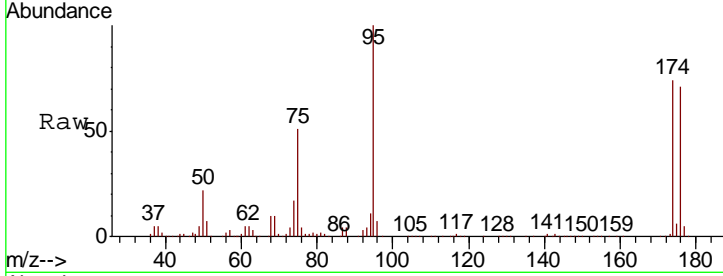




#76
 1,2,3-Trichloropropane
 Concen: 20.964 ug/l
 RT: 11.13 min Scan# 1637
 Delta R.T. -0.16 min
 Lab File: VX008780.D
 Acq: 09 Apr 2019 18:55

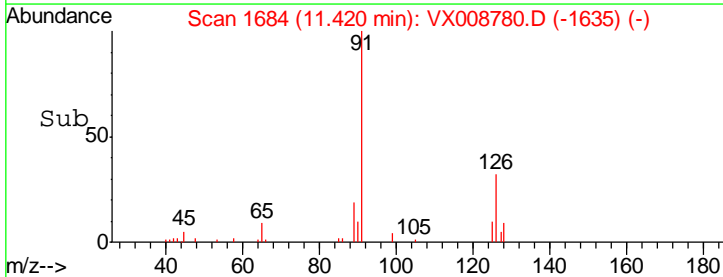
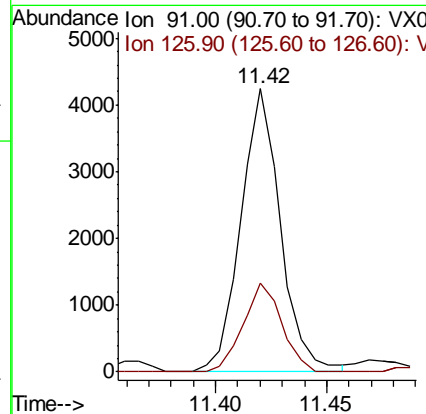
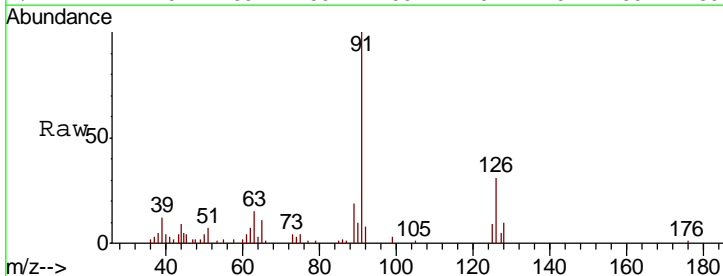
Instrument : MSVOA_X
 ClientSampled : 0240-COMP-CS-5-ELTRT

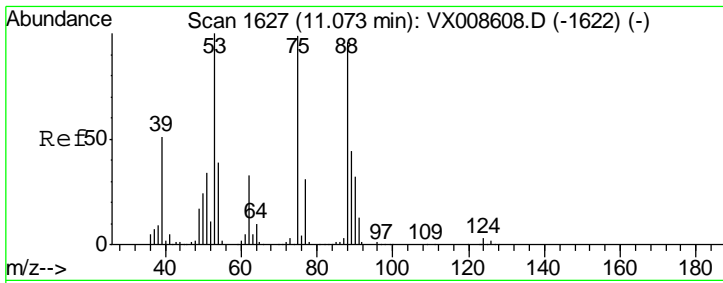
Tgt Ion: 75 Resp: 72317
 Ion Ratio Lower Upper
 75 100
 77 1.4 22.3 66.8#



#79
 2-Chlorotoluene
 Concen: 0.719 ug/l
 RT: 11.42 min Scan# 1684
 Delta R.T. -0.00 min
 Lab File: VX008780.D
 Acq: 09 Apr 2019 18:55

Tgt Ion: 91 Resp: 5269
 Ion Ratio Lower Upper
 91 100
 126 30.5 16.1 48.3

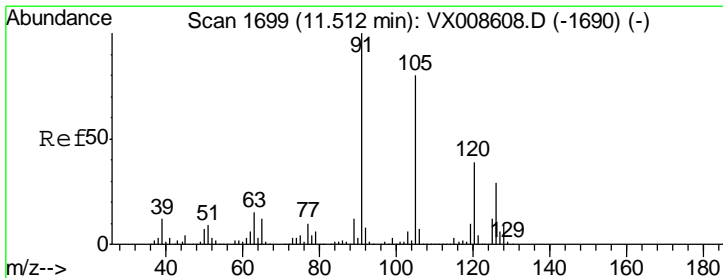
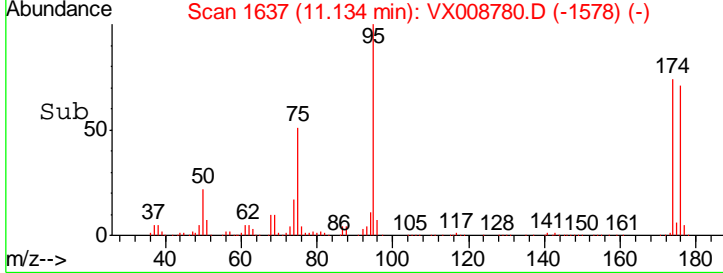
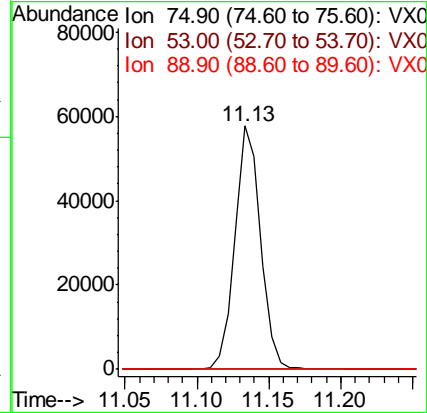
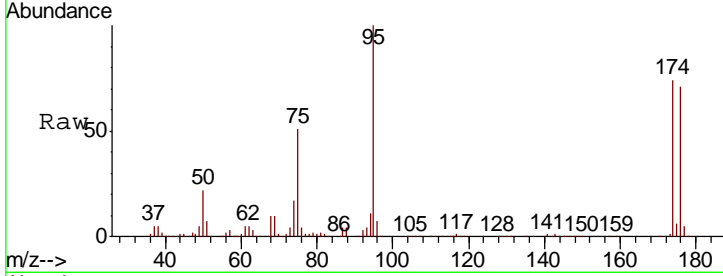




#81
 trans-1,4-Dichloro-2-butene
 Concen: 57.787 ug/l
 RT: 11.13 min Scan# 1637
 Delta R.T. 0.06 min
 Lab File: VX008780.D
 Acq: 09 Apr 2019 18:55

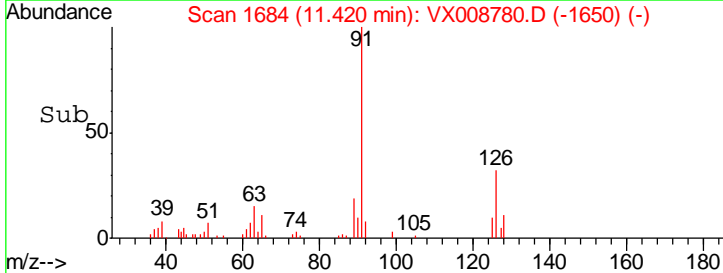
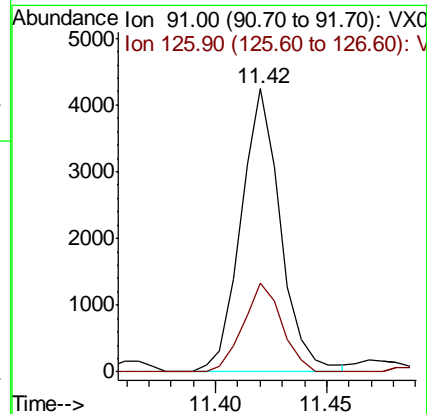
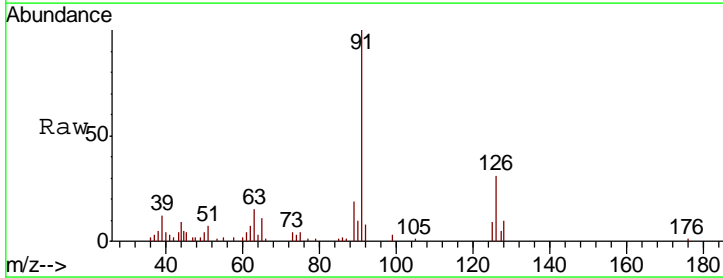
Instrument :
 MSVOA_X
 ClientSampled :
 0240-COMP-CS-5-ELTRT

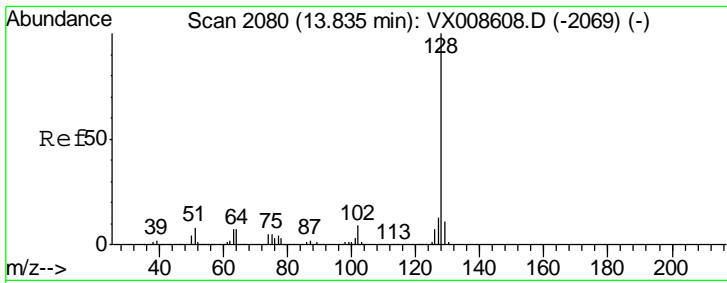
Tgt Ion	Resp	Lower	Upper
75	100		
53	0.0	81.3	121.9#
89	0.0	35.6	53.4#



#82
 4-Chlorotoluene
 Concen: 0.621 ug/l
 RT: 11.42 min Scan# 1684
 Delta R.T. -0.09 min
 Lab File: VX008780.D
 Acq: 09 Apr 2019 18:55

Tgt Ion	Resp	Lower	Upper
91	100		
126	30.5	13.9	41.6





#95
 Naphthalene
 Concen: 0.426 ug/l
 RT: 13.83 min Scan# 2080
 Delta R.T. -0.00 min
 Lab File: VX008780.D
 Acq: 09 Apr 2019 18:55

Instrument : MSVOA_X
 ClientSampled : 0240-COMP-CS-5-ELTRT

Tot Ion:128 Resp: 4399

Ion	Ratio	Lower	Upper
128	100		
127	14.8	10.4	15.6
129	13.1	8.6	13.0#

