

Data Path : Z:\VOASRV\HPCHEM1\MSVOA X\DATA\VX040920\  
 Data File : VX015593.D  
 Acq On : 09 Apr 2020 13:53  
 Operator : JC/SP  
 Sample : L2190-06 20X  
 Misc : 5.0mL/MSVOA X/WATER  
 ALS Vial : 11 Sample Multiplier: 1

Instrument :  
 MSVOA\_X  
 ClientSampleId :  
 KY062MW139-200407

Quant Time: Apr 10 06:34:13 2020  
 Quant Method : Z:\VOASRV\HPCHEM1\MSVOA\_X\METHOD\82X032720W.M  
 Quant Title : SW846 8260  
 QLast Update : Fri Mar 27 09:35:51 2020  
 Response via : Initial Calibration

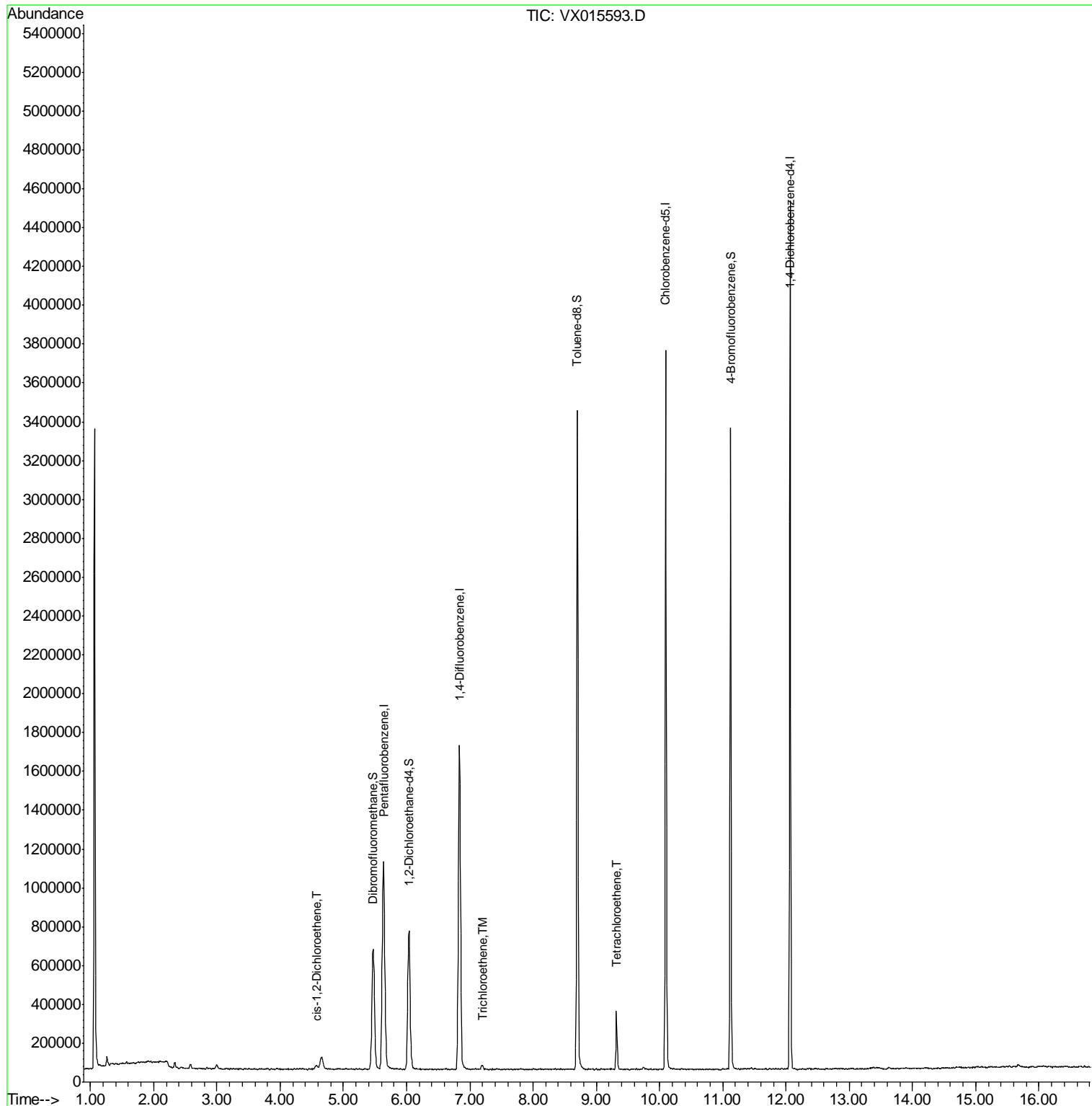
Internal Standards	R.T.	QIon	Response	Conc	Units	Dev(Min)
1) Pentafluorobenzene	5.63	168	1074833	50.00	ug/l	0.00
34) 1,4-Difluorobenzene	6.84	114	1672601	50.00	ug/l	0.00
63) Chlorobenzene-d5	10.10	117	1580742	50.00	ug/l	0.00
72) 1,4-Dichlorobenzene-d4	12.06	152	888229	50.00	ug/l	0.00
System Monitoring Compounds						
33) 1,2-Dichloroethane-d4	6.04	65	703348	46.40	ug/l	0.00
Spiked Amount	50.000		Recovery	=	92.80%	
35) Dibromofluoromethane	5.47	113	513922	48.07	ug/l	0.00
Spiked Amount	50.000		Recovery	=	96.14%	
50) Toluene-d8	8.70	98	2007843	51.01	ug/l	0.00
Spiked Amount	50.000		Recovery	=	102.02%	
62) 4-Bromofluorobenzene	11.12	95	848392	53.03	ug/l	0.00
Spiked Amount	50.000		Recovery	=	106.06%	
Target Compounds						
27) cis-1,2-Dichloroethene	4.58	96	14102	1.082	ug/l	83
44) Trichloroethene	7.19	130	9584	0.778	ug/l	97
64) Tetrachloroethene	9.32	164	59990	5.029	ug/l	96

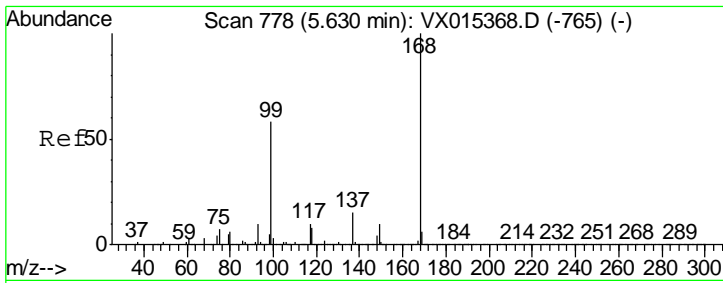
(#) = qualifier out of range (m) = manual integration (+) = signals summed

Data Path : Z:\VOASRV\HPCHEM1\MSVOA X\DATA\VX040920\  
 Data File : VX015593.D  
 Acq On : 09 Apr 2020 13:53  
 Operator : JC/SP  
 Sample : L2190-06 20X  
 Misc : 5.0mL/MSVOA X/WATER  
 ALS Vial : 11 Sample Multiplier: 1

**Instrument :**  
 MSVOA\_X  
**Client Sampled :**  
 KY062MW139-200407

Quant Time: Apr 10 06:34:13 2020  
 Quant Method : Z:\VOASRV\HPCHEM1\MSVOA\_X\METHOD\82X032720W.M  
 Quant Title : SW846 8260  
 QLast Update : Fri Mar 27 09:35:51 2020  
 Response via : Initial Calibration

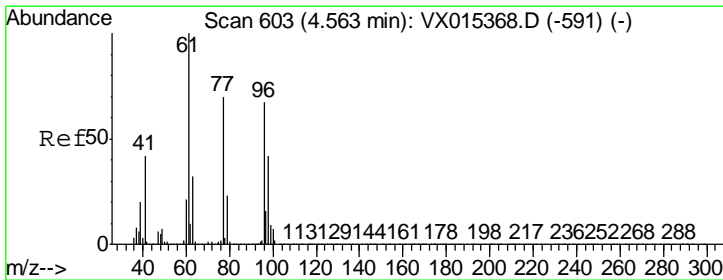
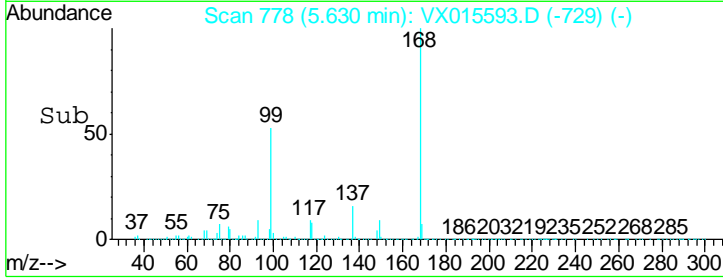
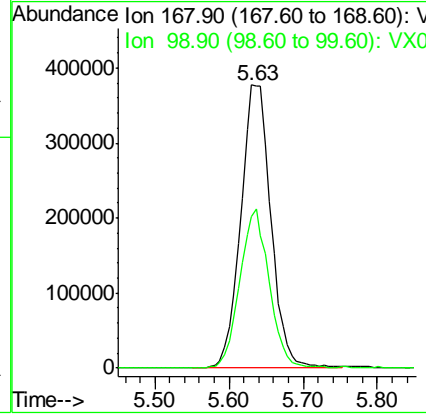
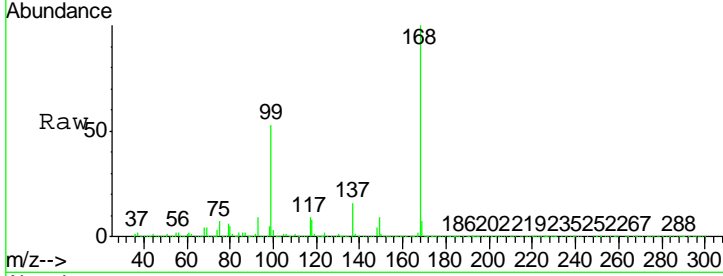




#1  
 Pentafluorobenzene  
 Concen: 50.000 ug/l  
 RT: 5.63 min Scan# 778  
 Delta R.T. 0.00 min  
 Lab File: VX015593.D  
 Acq: 09 Apr 2020 13:53

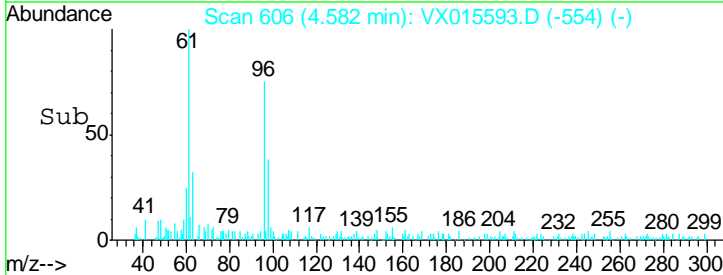
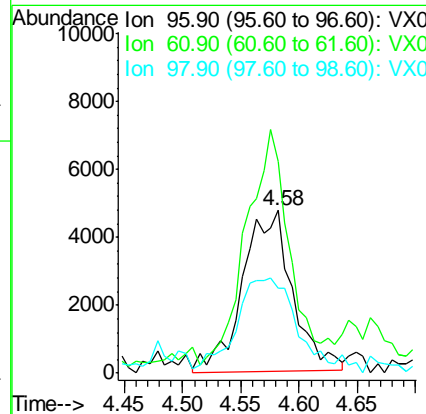
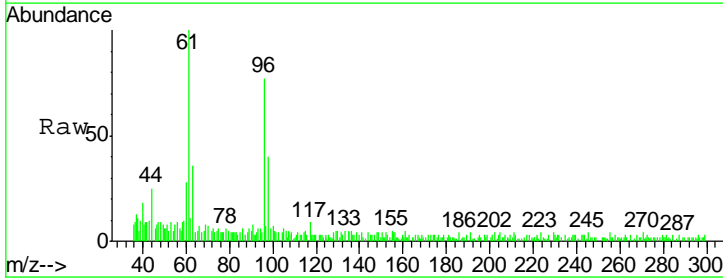
Instrument :  
 MSVOA\_X  
 ClientSampled :  
 KY062MW139-200407

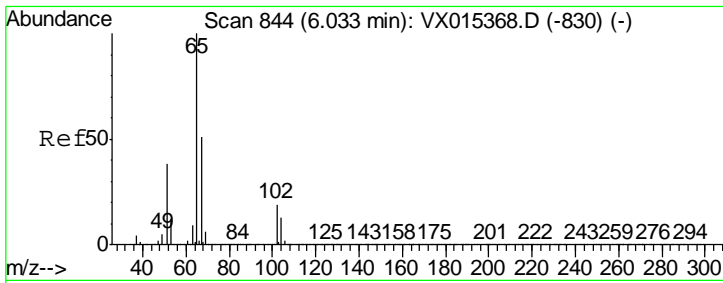
Tgt Ion	Resp	Lower	Upper
168	1074833		
99	53.3	46.4	69.6



#27  
 cis-1,2-Dichloroethene  
 Concen: 1.082 ug/l  
 RT: 4.58 min Scan# 606  
 Delta R.T. 0.02 min  
 Lab File: VX015593.D  
 Acq: 09 Apr 2020 13:53

Tgt Ion	Resp	Lower	Upper
96	14102		
61	124.5	0.0	308.4
98	66.0	0.0	129.2

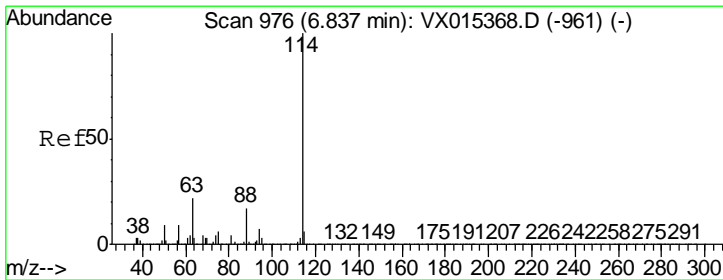
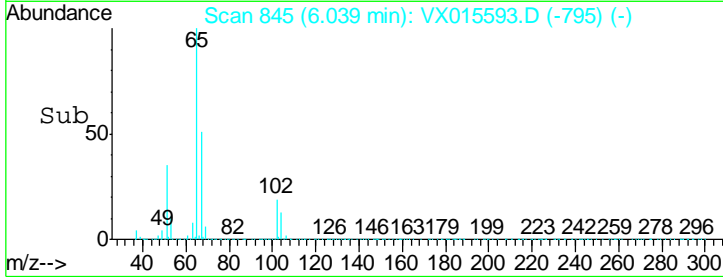
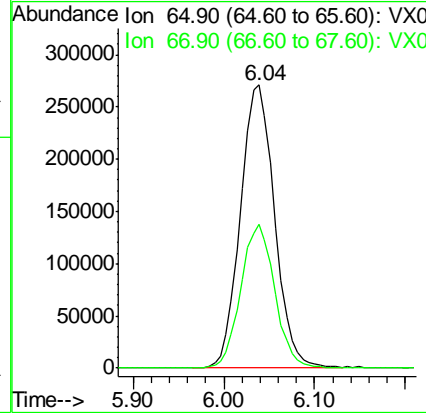
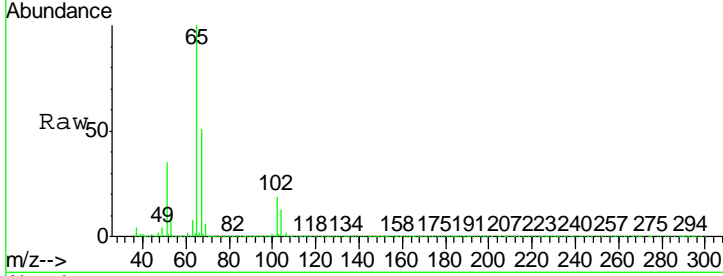




#33  
 1,2-Dichloroethane-d4  
 Concen: 46.397 ug/l  
 RT: 6.04 min Scan# 845  
 Delta R.T. 0.01 min  
 Lab File: VX015593.D  
 Acq: 09 Apr 2020 13:53

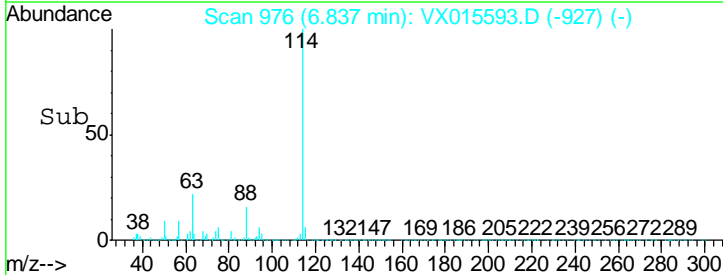
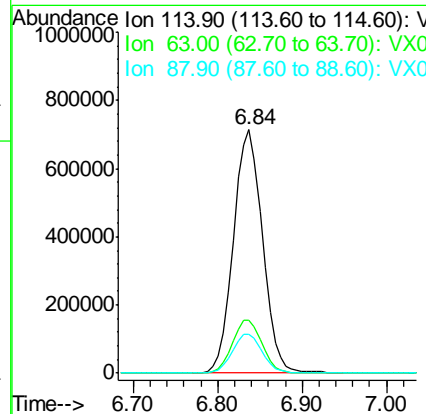
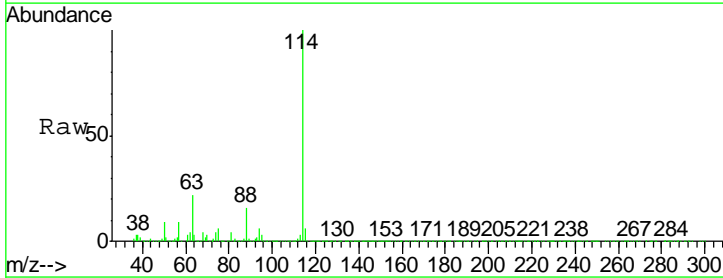
Instrument :  
 MSVOA\_X  
 ClientSampleId :  
 KY062MW139-200407

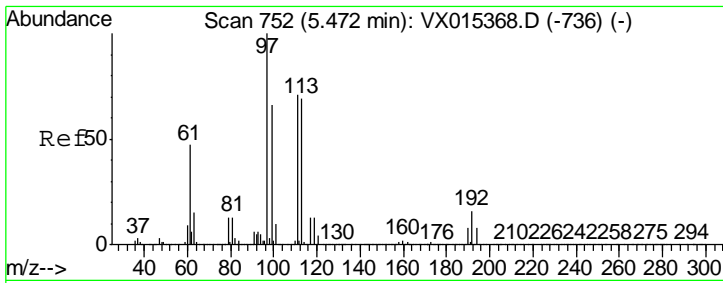
Tgt Ion: 65 Resp: 703348  
 Ion Ratio Lower Upper  
 65 100  
 67 50.3 0.0 102.6



#34  
 1,4-Difluorobenzene  
 Concen: 50.000 ug/l  
 RT: 6.84 min Scan# 976  
 Delta R.T. 0.00 min  
 Lab File: VX015593.D  
 Acq: 09 Apr 2020 13:53

Tgt Ion: 114 Resp: 1672601  
 Ion Ratio Lower Upper  
 114 100  
 63 21.5 0.0 44.2  
 88 16.1 0.0 33.8

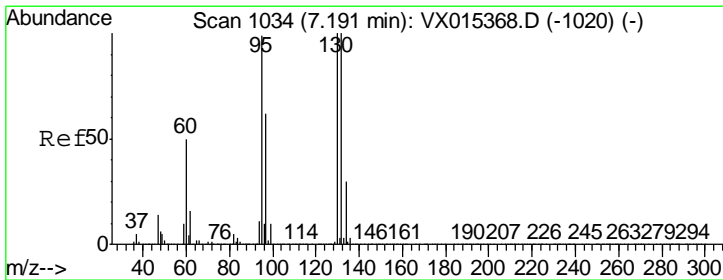
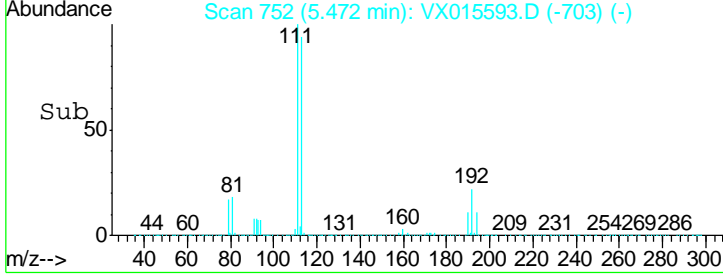
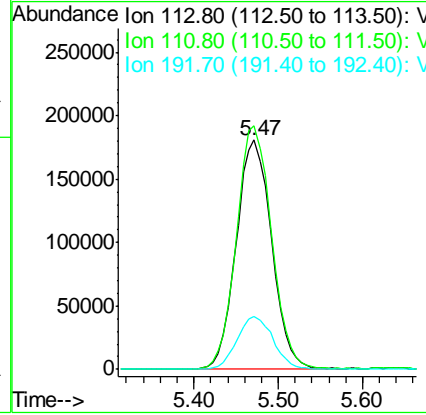
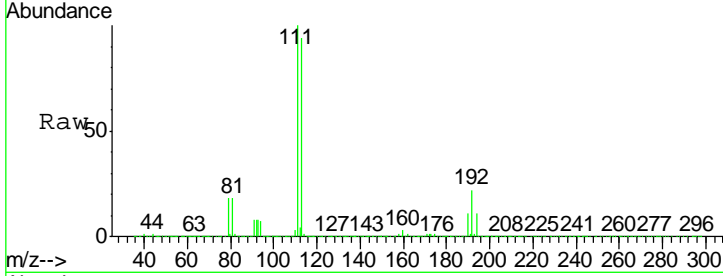




#35  
 Dibromofluoromethane  
 Concen: 48.067 ug/l  
 RT: 5.47 min Scan# 752  
 Delta R.T. 0.00 min  
 Lab File: VX015593.D  
 Acq: 09 Apr 2020 13:53

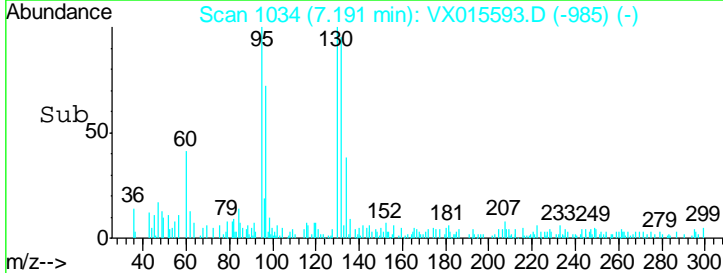
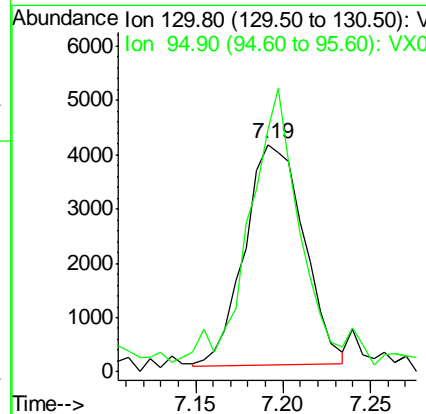
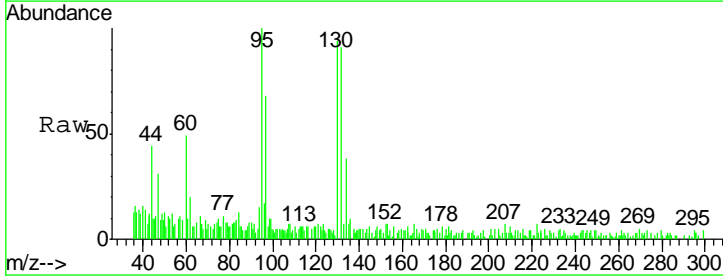
Instrument :  
 MSVOA\_X  
 ClientSampleId :  
 KY062MW139-200407

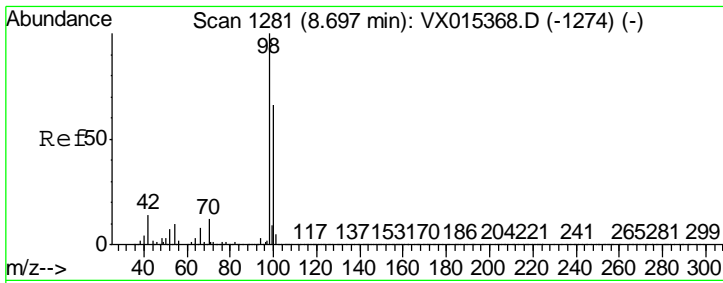
Tgt Ion	Resp	Lower	Upper
113	100		
111	105.3	81.5	122.3
192	23.6	17.8	26.6



#44  
 Trichloroethene  
 Concen: 0.778 ug/l  
 RT: 7.19 min Scan# 1034  
 Delta R.T. 0.00 min  
 Lab File: VX015593.D  
 Acq: 09 Apr 2020 13:53

Tgt Ion	Resp	Lower	Upper
130	100		
95	102.1	0.0	199.0

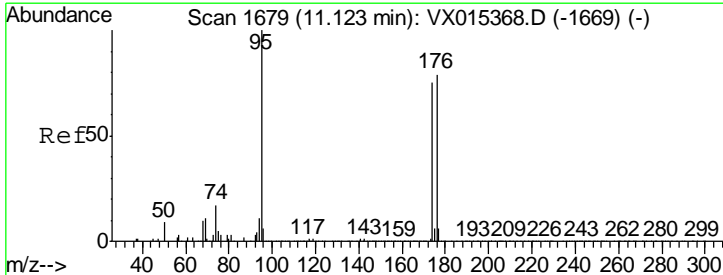
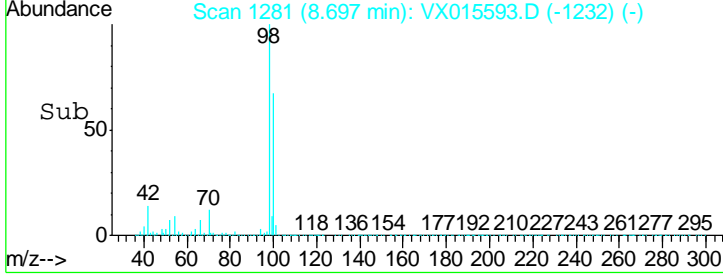
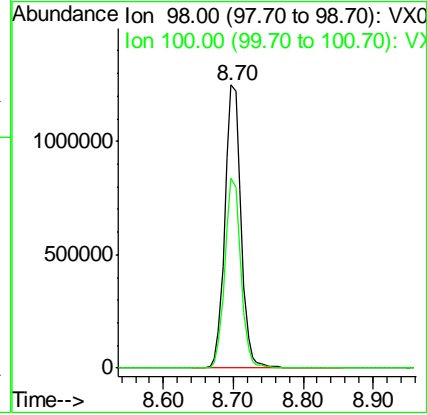
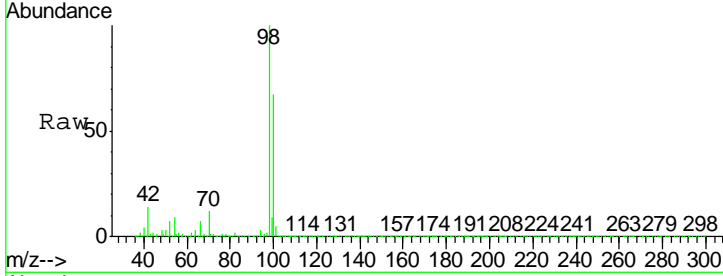




#50  
 Toluene-d8  
 Concen: 51.007 ug/l  
 RT: 8.70 min Scan# 1281  
 Delta R.T. 0.00 min  
 Lab File: VX015593.D  
 Acq: 09 Apr 2020 13:53

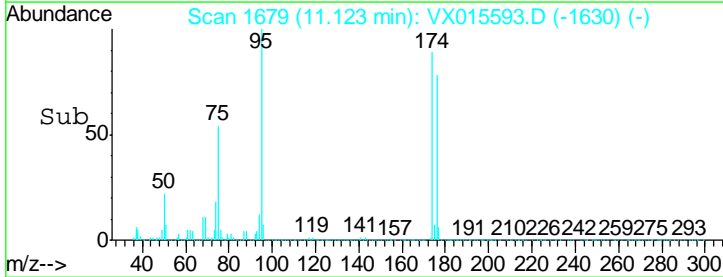
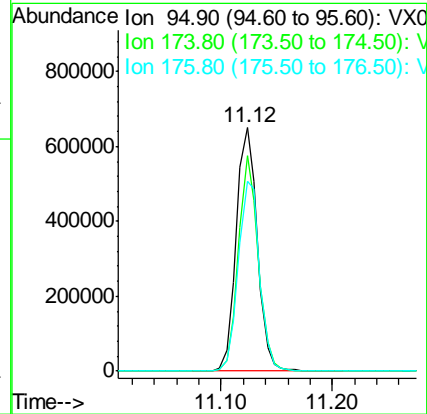
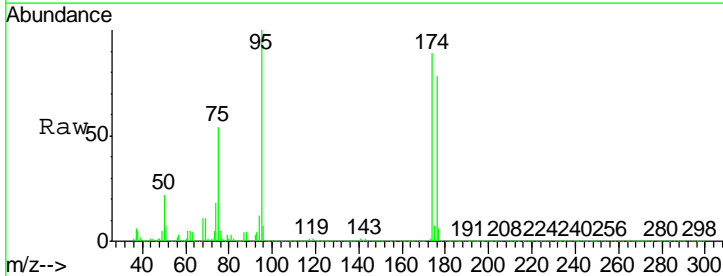
**Instrument :**  
 MSVOA\_X  
**ClientSampled :**  
 KY062MW139-200407

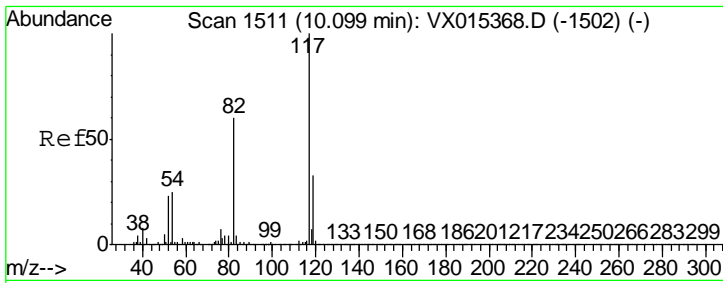
Tgt Ion: 98 Resp: 2007843  
 Ion Ratio Lower Upper  
 98 100  
 100 66.4 53.5 80.3



#62  
 4-Bromofluorobenzene  
 Concen: 53.032 ug/l  
 RT: 11.12 min Scan# 1679  
 Delta R.T. 0.00 min  
 Lab File: VX015593.D  
 Acq: 09 Apr 2020 13:53

Tgt Ion: 95 Resp: 848392  
 Ion Ratio Lower Upper  
 95 100  
 174 83.5 0.0 158.6  
 176 79.5 0.0 159.0



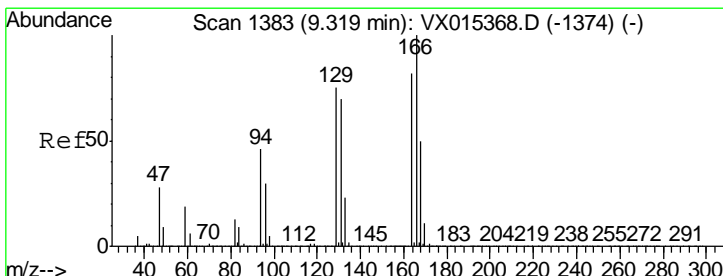
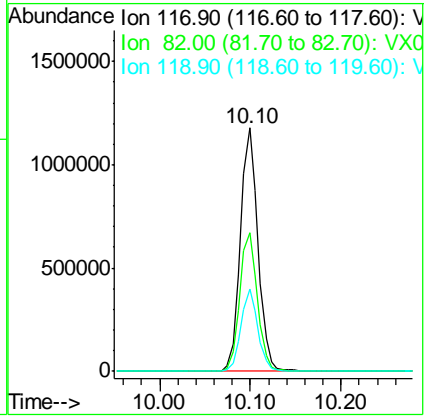
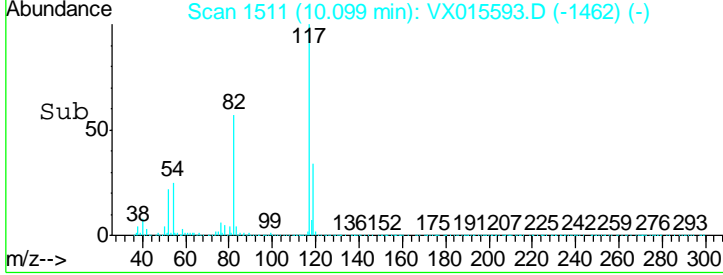
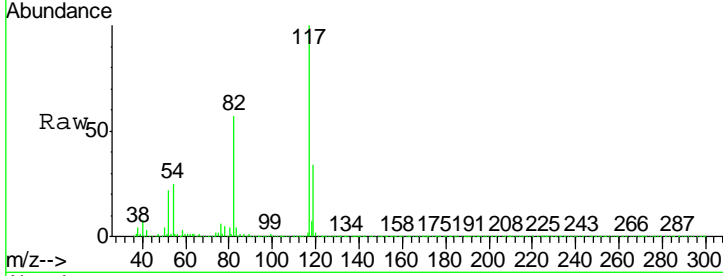


#63  
 Chlorobenzene-d5  
 Concen: 50.000 ug/l  
 RT: 10.10 min Scan# 1511  
 Delta R.T. 0.00 min  
 Lab File: VX015593.D  
 Acq: 09 Apr 2020 13:53

Instrument : MSVOA\_X  
 ClientSampled : KY062MW139-200407

Tgt Ion: 117 Resp: 1580742

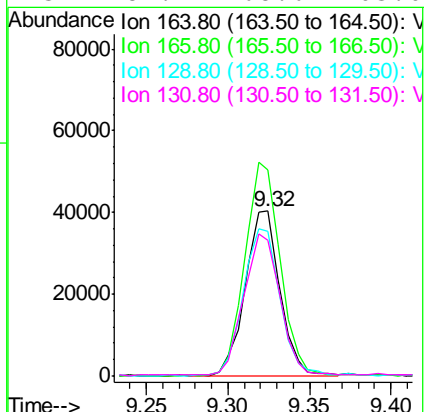
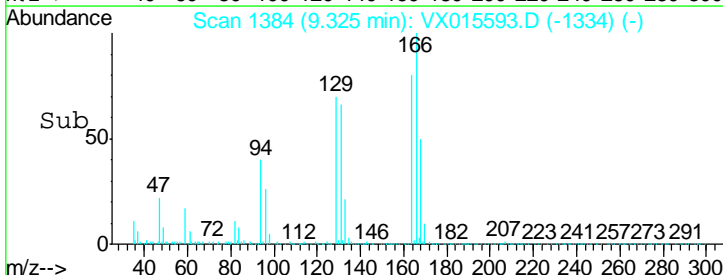
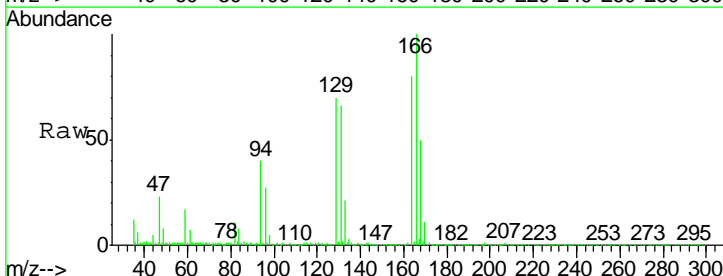
Ion	Ratio	Lower	Upper
117	100		
82	57.1	47.8	71.8
119	33.7	26.8	40.2

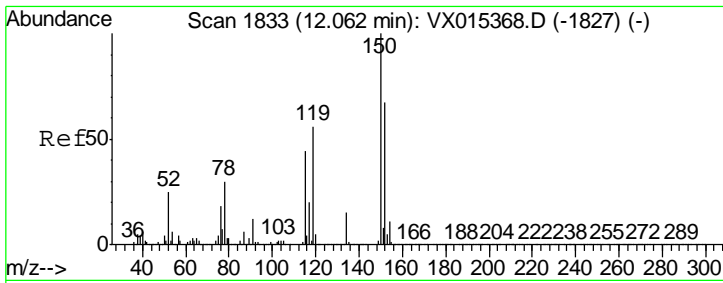


#64  
 Tetrachloroethene  
 Concen: 5.029 ug/l  
 RT: 9.32 min Scan# 1384  
 Delta R.T. 0.01 min  
 Lab File: VX015593.D  
 Acq: 09 Apr 2020 13:53

Tgt Ion: 164 Resp: 59990

Ion	Ratio	Lower	Upper
164	100		
166	125.1	97.8	146.6
129	87.3	73.0	109.4
131	81.4	68.6	103.0





#72  
 1,4-Dichlorobenzene-d4  
 Concen: 50.000 ug/l  
 RT: 12.06 min Scan# 1833  
 Delta R.T. 0.00 min  
 Lab File: VX015593.D  
 Acq: 09 Apr 2020 13:53

**Instrument :**  
 MSVOA\_X  
**ClientSampled :**  
 KY062MW139-200407

Tot Ion	Resp	Lower	Upper
152	100		
115	57.7	39.0	116.9
150	157.7	0.0	340.8

