

Data Path : Z:\voasrv\HPCHEM1\MSVOA_X\Data\VX040924\
 Data File : VX040952.D
 Acq On : 09 Apr 2024 14:07
 Operator : JC/MD
 Sample : P2031-02
 Misc : 5.0mL/MSVOA_X/WATER
 ALS Vial : 13 Sample Multiplier: 1

Instrument :
 MSVOA_X
 ClientSampleId :
 RSB-01-37-040824-FD

Integration Parameters: RTEINT.P

Integrator: RTE
 Smoothing : ON Filtering: 5
 Sampling : 1 Min Area: 3 % of largest Peak
 Start Thrs: 0.2 Max Peaks: 100
 Stop Thrs : 0 Peak Location: TOP

If leading or trailing edge < 100 prefer < Baseline drop else tangent >
 Peak separation: 5

Method : Z:\voasrv\HPCHEM1\MSVOA_X\Method\82X040124W.M
 Title : SW846 8260

Signal : TIC: VX040952.D\data.ms

peak #	R.T. min	first scan	max scan	last scan	PK TY	peak height	corr. area	corr. % max.	% of total
1	5.093	649	657	658	rBV2	3751	6727	2.50%	0.446%
2	5.391	694	706	718	rBV2	30417	88848	32.97%	5.897%
3	5.550	722	732	745	rBV2	47433	134158	49.78%	8.904%
4	5.958	790	799	814	rBV	35724	96378	35.76%	6.396%
5	6.763	922	931	949	rBV	79600	189621	70.36%	12.584%
6	8.647	1234	1240	1249	rBV	168723	265093	98.37%	17.593%
7	10.055	1465	1471	1482	rBV	178605	252042	93.53%	16.727%
8	11.079	1634	1639	1647	rBV	161926	204437	75.86%	13.568%
9	12.018	1788	1793	1802	rBV	210953	269486	100.00%	17.885%

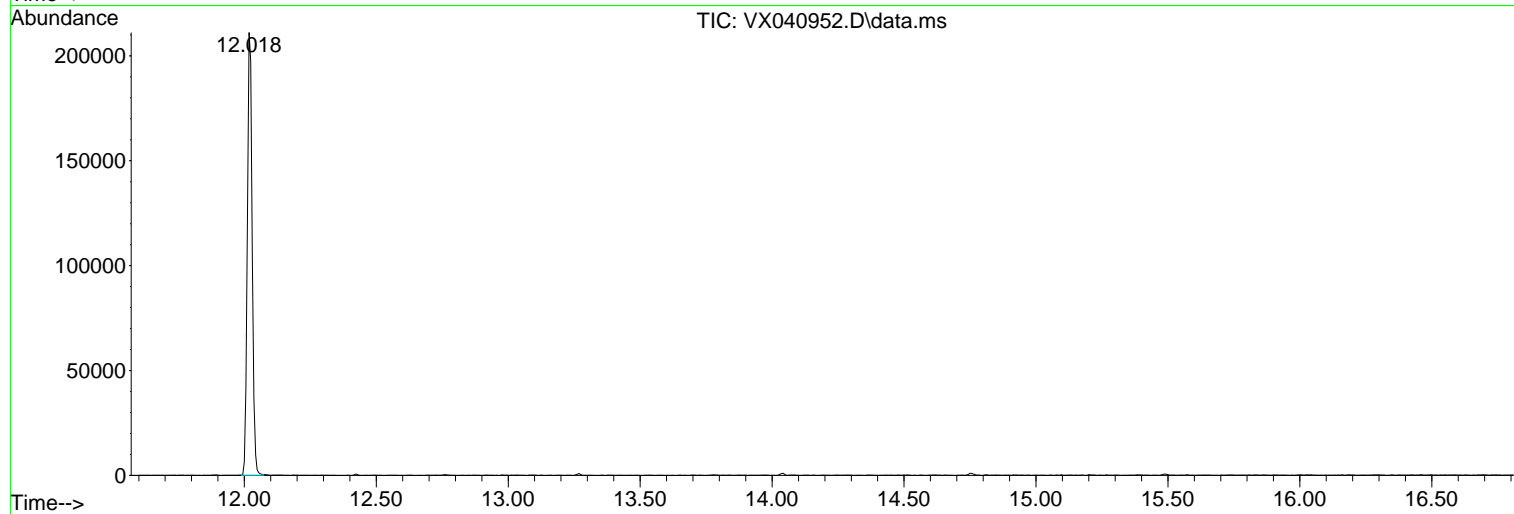
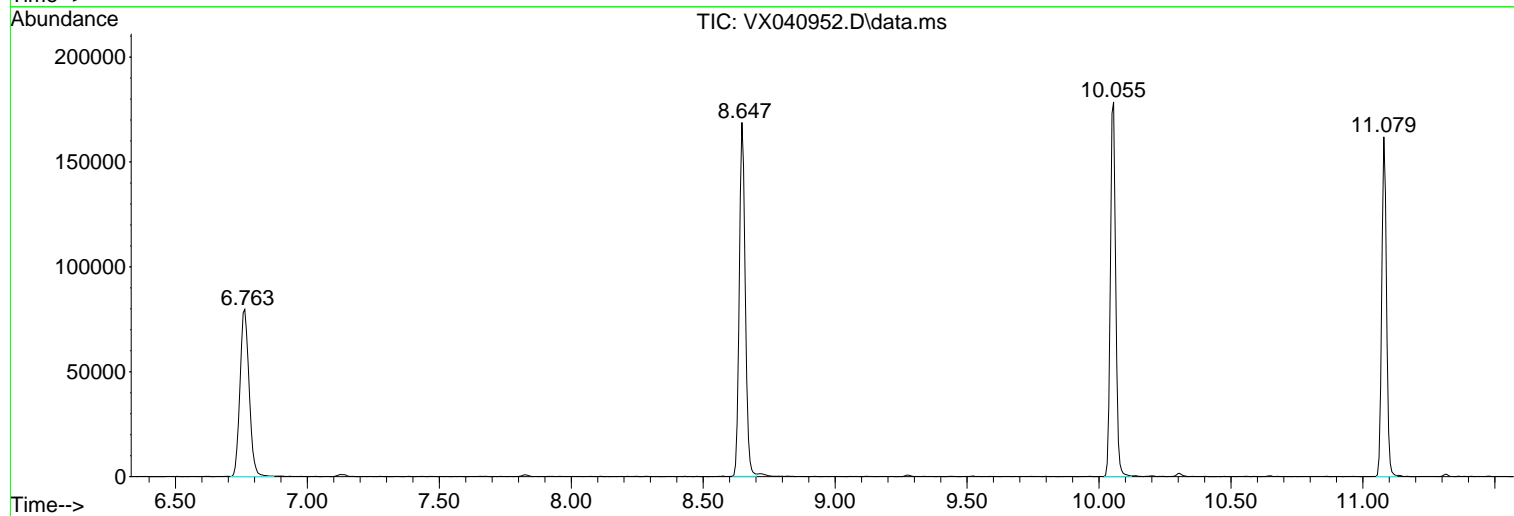
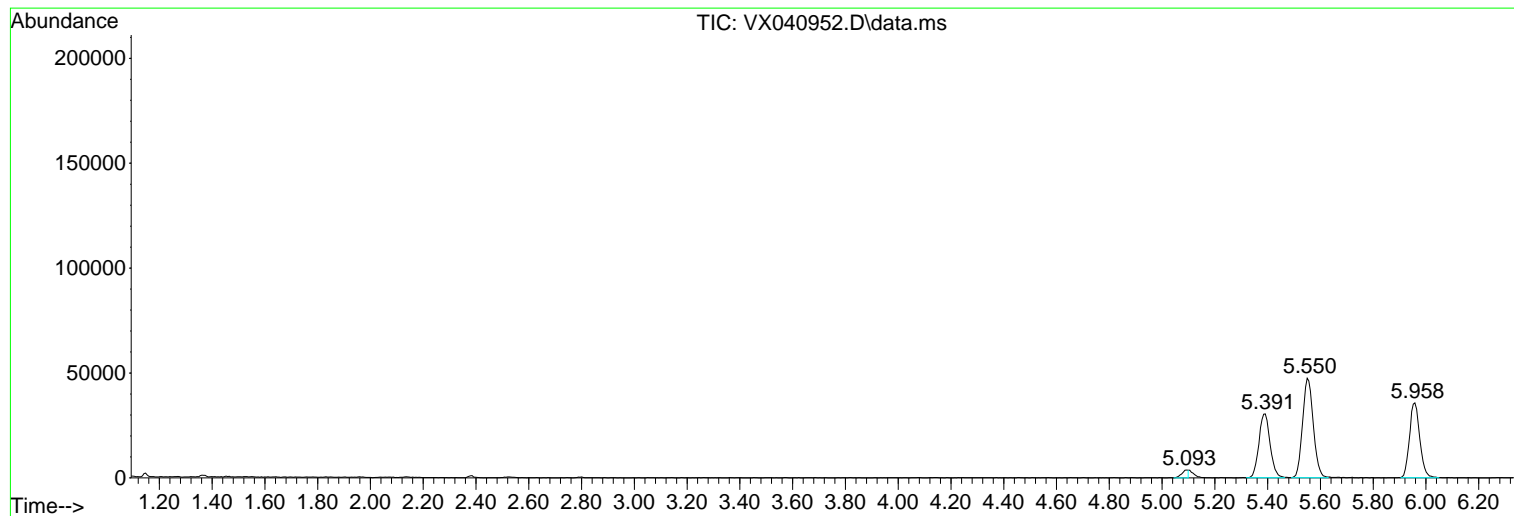
Sum of corrected areas: 1506790

Data Path : Z:\voasrv\HPCHEM1\MSVOA_X\Data\VX040924\
Data File : VX040952.D
Acq On : 09 Apr 2024 14:07
Operator : JC/MD
Sample : P2031-02
Misc : 5.0mL/MSVOA_X/WATER
ALS Vial : 13 Sample Multiplier: 1

Instrument :
MSVOA_X
ClientSampleId :
RSB-01-37-040824-FD

Quant Method : Z:\voasrv\HPCHEM1\MSVOA_X\Method\82X040124W.M
Quant Title : SW846 8260

TIC Library : C:\Database\NIST20.L
TIC Integration Parameters: LSCINT.P



Library Search Compound Report

Data Path : Z:\voasrv\HPCHEM1\MSVOA_X\Data\VX040924\
Data File : VX040952.D
Acq On : 09 Apr 2024 14:07
Operator : JC/MD
Sample : P2031-02
Misc : 5.0mL/MSVOA_X/WATER
ALS Vial : 13 Sample Multiplier: 1

Instrument :
MSVOA_X
ClientSampleId :
RSB-01-37-040824-FD

Quant Method : Z:\voasrv\HPCHEM1\MSVOA_X\Method\82X040124W.M
Quant Title : SW846 8260

TIC Library : C:\Database\NIST20.L
TIC Integration Parameters: LSCINT.P

No Library Search Compounds Detected

Data Path : Z:\voasrv\HPCHEM1\MSVOA_X\Data\VX040924\
Data File : VX040952.D
Acq On : 09 Apr 2024 14:07
Operator : JC/MD
Sample : P2031-02
Misc : 5.0mL/MSVOA_X/WATER
ALS Vial : 13 Sample Multiplier: 1

Instrument :
MSVOA_X
ClientSampleId :
RSB-01-37-040824-FD

Quant Method : Z:\voasrv\HPCHEM1\MSVOA_X\Method\82X040124W.M
Quant Title : SW846 8260

TIC Library : C:\Database\NIST20.L
TIC Integration Parameters: LSCINT.P

TIC Top Hit name	RT	EstConc	Units	Response	#	RT	Resp	Conc
------------------	----	---------	-------	----------	---	----	------	------
