

Data File : VX008811.D
 Acq On : 10 Apr 2019 17:29
 Operator : JC/SP
 Sample : K2349-20
 Misc : 5.0mL/MSVOA_X/WATER
 ALS Vial : 18 Sample Multiplier: 1

Instrument :
 MSVOA_X
 ClientSampleId :
 DUP-0507-190409

Quant Time: Apr 11 05:45:56 2019
 Quant Method : Z:\VOASRV\HPCHEM1\MSVOA_X\METHOD\82X040319W.M
 Quant Title : SW846 8260
 QLast Update : Thu Apr 04 04:47:41 2019
 Response via : Initial Calibration

Internal Standards	R.T.	QIon	Response	Conc	Units	Dev(Min)
1) Pentafluorobenzene	5.66	168	202051	50.00	ug/l	0.00
34) 1,4-Difluorobenzene	6.86	114	326164	50.00	ug/l	0.00
63) Chlorobenzene-d5	10.11	117	279602	50.00	ug/l	0.00
72) 1,4-Dichlorobenzene-d4	12.08	152	112285	50.00	ug/l	0.00

System Monitoring Compounds

33) 1,2-Dichloroethane-d4	6.06	65	134699	45.71	ug/l	0.00
Spiked Amount	50.000		Recovery	=	91.42%	
35) Dibromofluoromethane	5.50	113	99305	47.62	ug/l	0.00
Spiked Amount	50.000		Recovery	=	95.24%	
50) Toluene-d8	8.71	98	407511	49.08	ug/l	0.00
Spiked Amount	50.000		Recovery	=	98.16%	
62) 4-Bromofluorobenzene	11.13	95	131658	44.71	ug/l	0.00
Spiked Amount	50.000		Recovery	=	89.42%	

Target Compounds

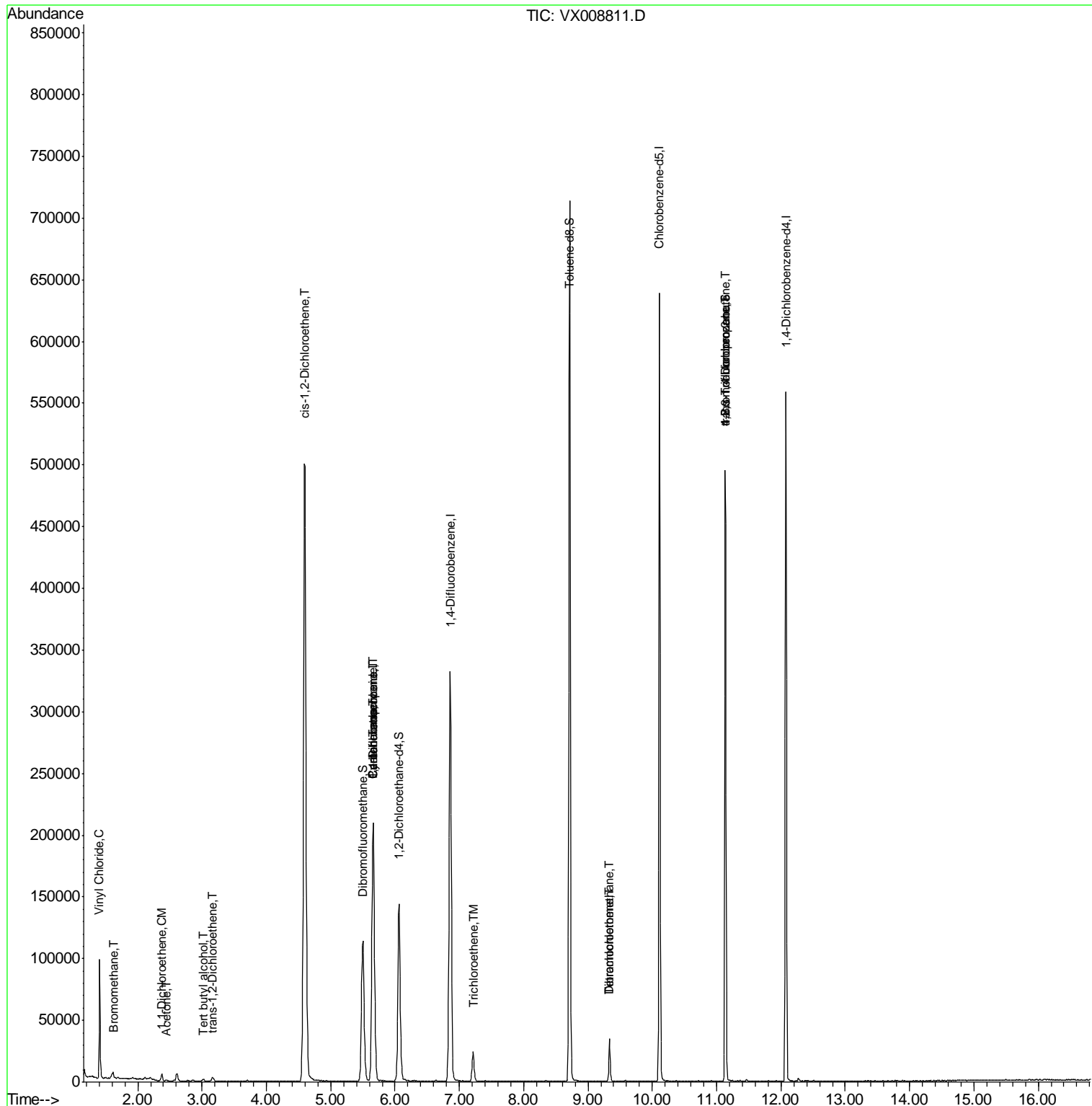
	R.T.	QIon	Response	Conc	Units	Qvalue
3) Chloromethane	1.33	50	256	Below Cal	#	70
4) Vinyl Chloride	1.40	62	67196	21.373	ug/l	97
5) Bromomethane	1.64	94	209	2.015	ug/l #	57
6) Chloroethane	1.80	64	366	Below Cal	#	43
11) Tert butyl alcohol	3.02	59	951	1.378	ug/l #	78
12) 1,1-Dichloroethene	2.37	96	1676	0.718	ug/l	87
16) Acetone	2.45	43	820	0.483	ug/l	97
17) Carbon Disulfide	2.57	76	427	Below Cal	#	46
21) trans-1,2-Dichloroethene	3.17	96	1130	0.447	ug/l	91
27) cis-1,2-Dichloroethene	4.60	96	313194	107.814	ug/l	90
28) Bromochloromethane	5.05	49	40	Below Cal	#	22
31) Cyclohexane	5.67	56	4454	0.875	ug/l #	1
36) 1,1-Dichloropropene	5.66	75	16014	4.492	ug/l #	51
38) Carbon Tetrachloride	5.66	117	19007	6.441	ug/l #	17
44) Trichloroethene	7.21	130	9052	3.659	ug/l	94
60) Dibromochloromethane	9.34	129	5808	2.452	ug/l #	11
64) Tetrachloroethene	9.34	164	6331	3.056	ug/l	99
76) 1,2,3-Trichloropropane	11.13	75	66694	21.622	ug/l #	33
81) trans-1,4-Dichloro-2-buten	11.13	75	66694	59.601	ug/l #	9

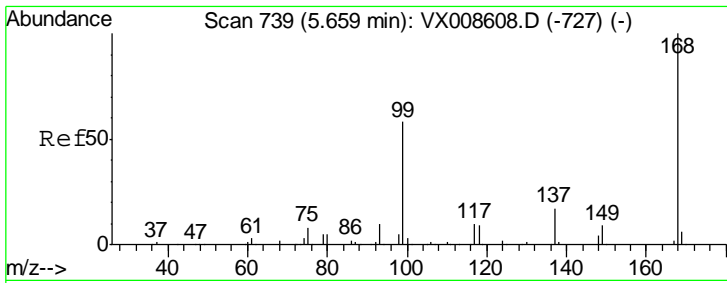
(#) = qualifier out of range (m) = manual integration (+) = signals summed

Data File : VX008811.D
Acq On : 10 Apr 2019 17:29
Operator : JC/SP
Sample : K2349-20
Misc : 5.0mL/MSVOA_X/WATER
ALS Vial : 18 Sample Multiplier: 1

Instrument :
MSVOA_X
Client Sampled :
DUP-0507-190409

Quant Time: Apr 11 05:45:56 2019
Quant Method : Z:\VOASRV\HPCHEM1\MSVOA_X\METHOD\82X040319W.M
Quant Title : SW846 8260
QLast Update : Thu Apr 04 04:47:41 2019
Response via : Initial Calibration

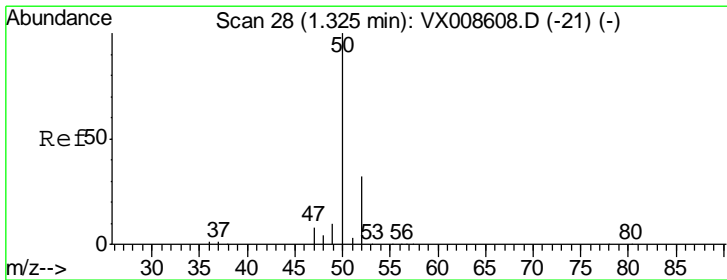
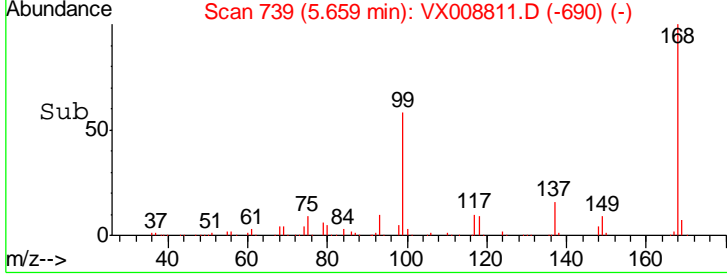
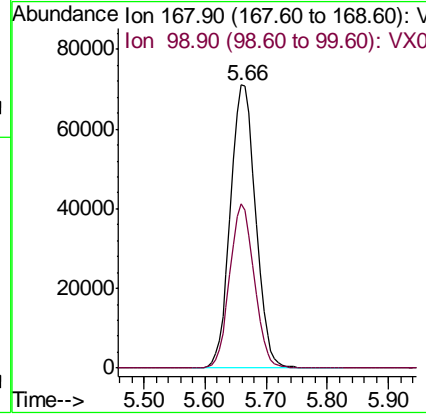
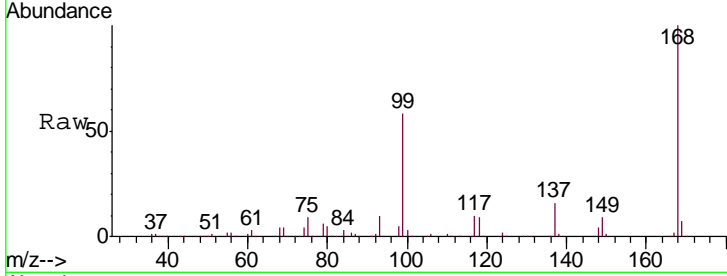




#1
 Pentafluorobenzene
 Concen: 50.000 ug/l
 RT: 5.66 min Scan# 739
 Delta R.T. -0.00 min
 Lab File: VX008811.D
 Acq: 10 Apr 2019 17:29

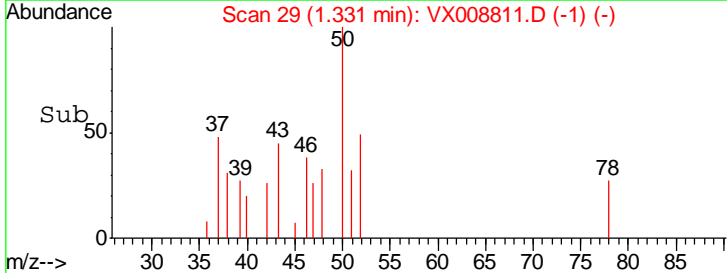
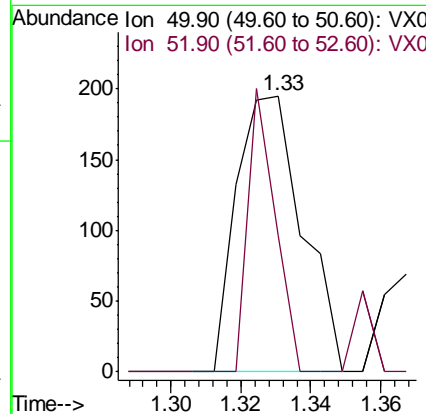
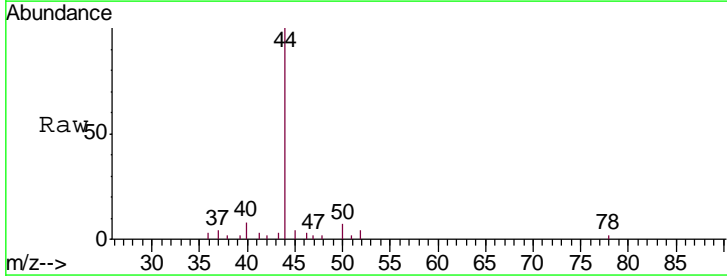
Instrument : MSVOA_X
 ClientSampleID : DUP-0507-190409

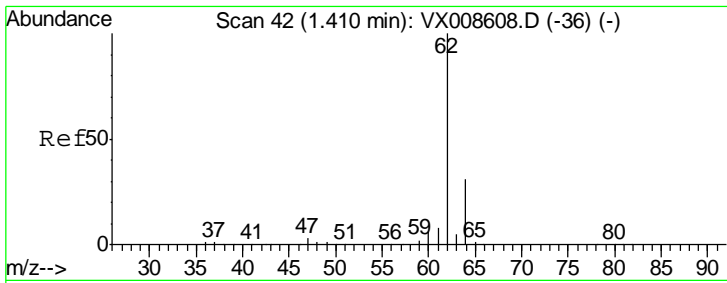
Tgt Ion: 168 Resp: 202051
 Ion Ratio Lower Upper
 168 100
 99 58.0 46.7 70.1



#3
 Chloromethane
 Concen: Below Cal
 RT: 1.33 min Scan# 29
 Delta R.T. 0.01 min
 Lab File: VX008811.D
 Acq: 10 Apr 2019 17:29

Tgt Ion: 50 Resp: 256
 Ion Ratio Lower Upper
 50 100
 52 49.2 25.8 38.8#

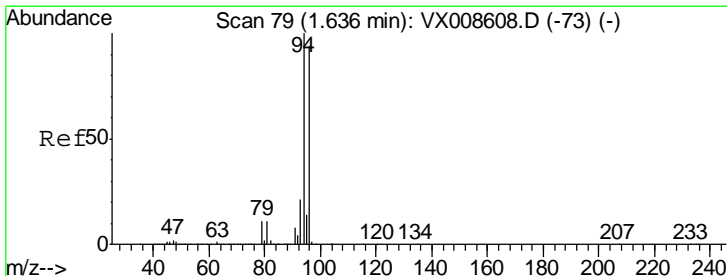
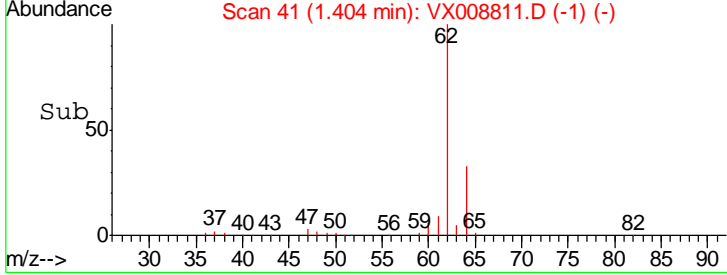
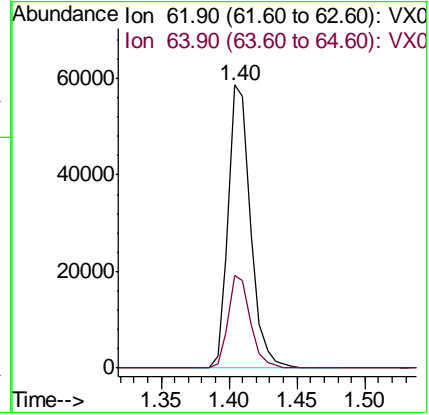
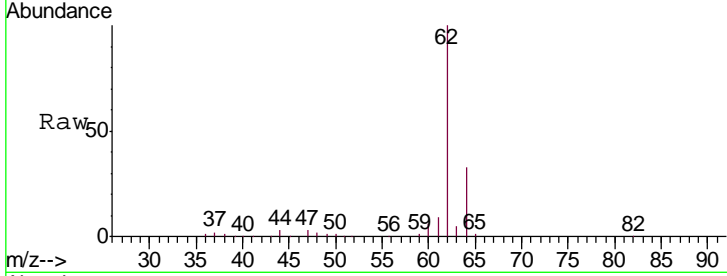




#4
 Vinyl Chloride
 Concen: 21.373 ug/l
 RT: 1.40 min Scan# 41
 Delta R.T. -0.01 min
 Lab File: VX008811.D
 Acq: 10 Apr 2019 17:29

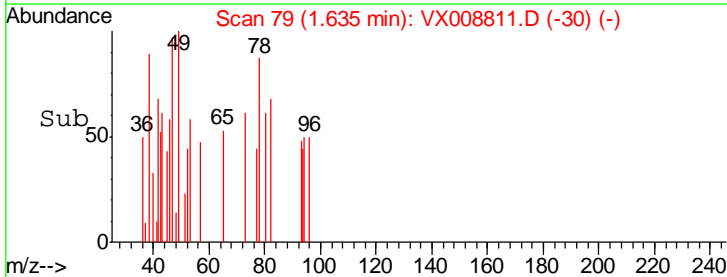
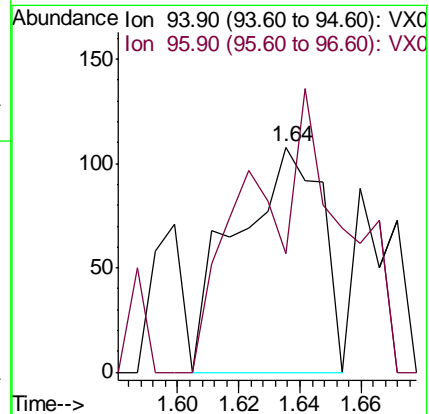
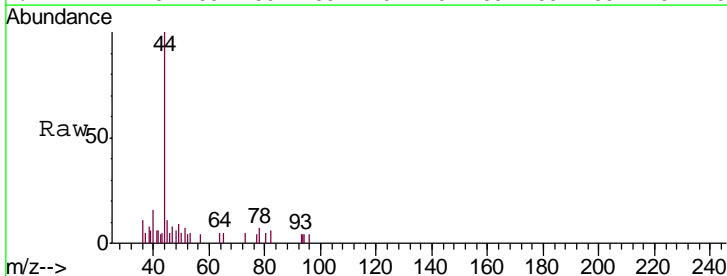
Instrument :
 MSVOA_X
 ClientSampled :
 DUP-0507-190409

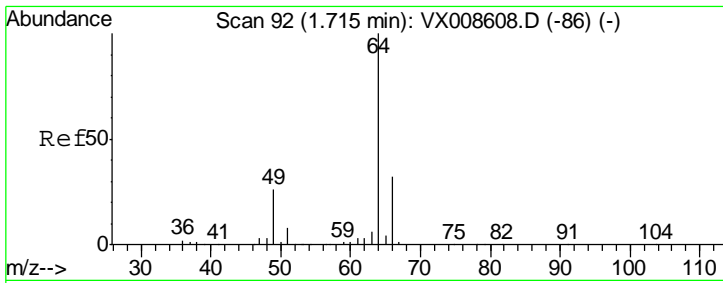
Tgt Ion: 62 Resp: 67196
 Ion Ratio Lower Upper
 62 100
 64 32.6 24.7 37.1



#5
 Bromomethane
 Concen: 2.015 ug/l
 RT: 1.64 min Scan# 79
 Delta R.T. 0.00 min
 Lab File: VX008811.D
 Acq: 10 Apr 2019 17:29

Tgt Ion: 94 Resp: 209
 Ion Ratio Lower Upper
 94 100
 96 52.8 75.2 112.8#

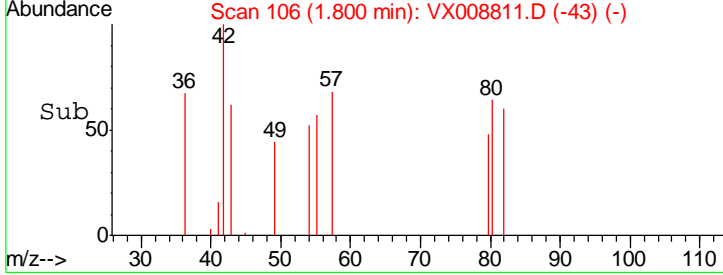
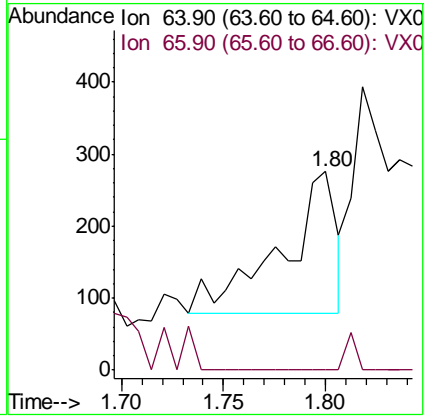
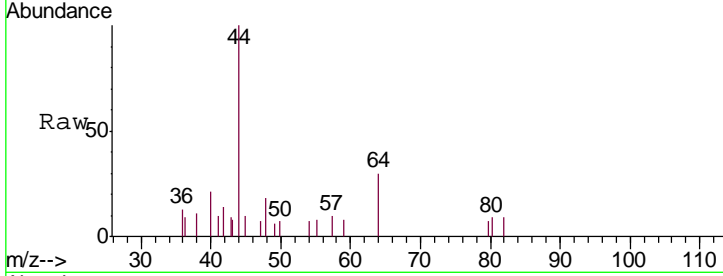




#6
 Chloroethane
 Concen: Below Cal
 RT: 1.80 min Scan# 106
 Delta R.T. 0.09 min
 Lab File: VX008811.D
 Acq: 10 Apr 2019 17:29

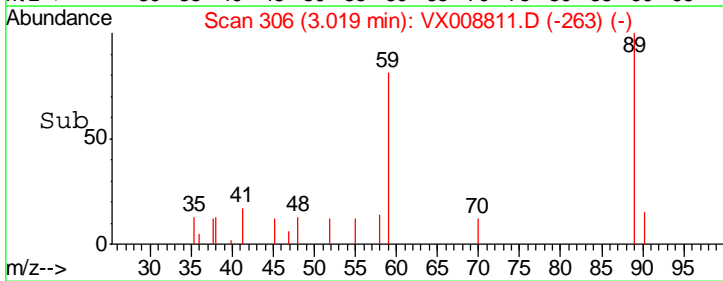
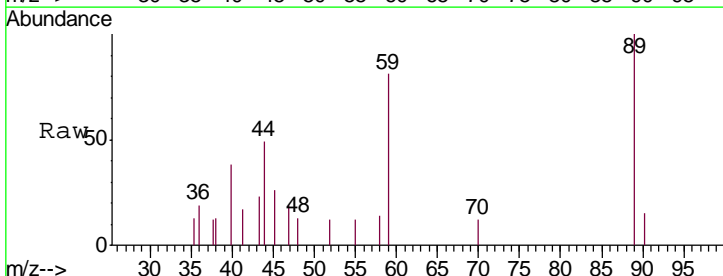
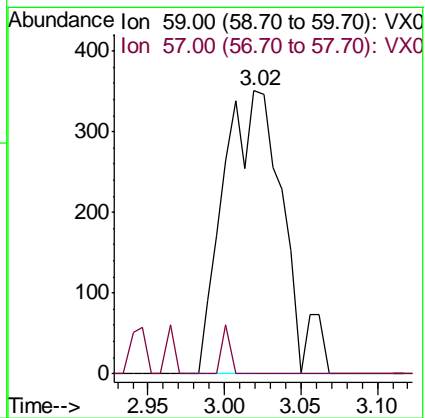
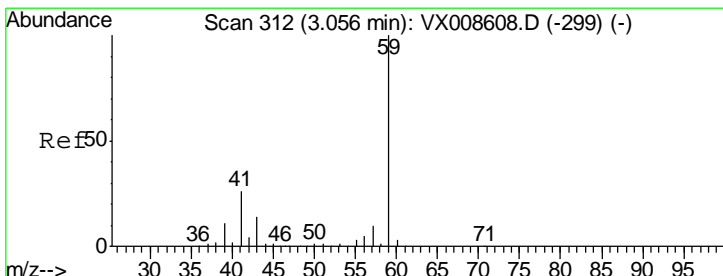
Instrument :
 MSVOA_X
 ClientSampled :
 DUP-0507-190409

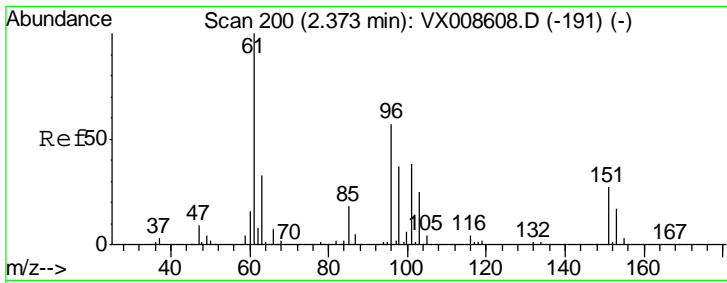
Tgt Ion: 64 Resp: 366
 Ion Ratio Lower Upper
 64 100
 66 0.0 25.4 38.0#



#11
 Tert butyl alcohol
 Concen: 1.378 ug/l
 RT: 3.02 min Scan# 306
 Delta R.T. -0.04 min
 Lab File: VX008811.D
 Acq: 10 Apr 2019 17:29

Tgt Ion: 59 Resp: 951
 Ion Ratio Lower Upper
 59 100
 57 2.3 8.3 12.5#

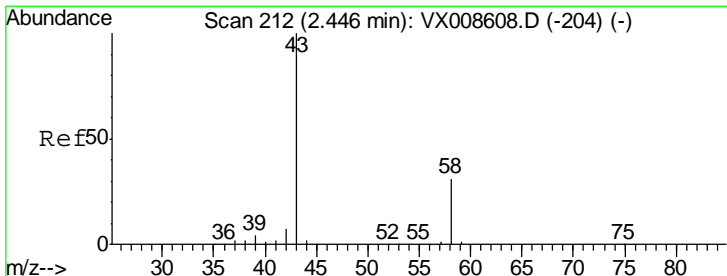
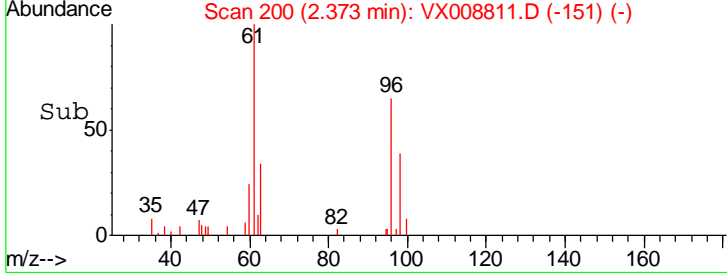
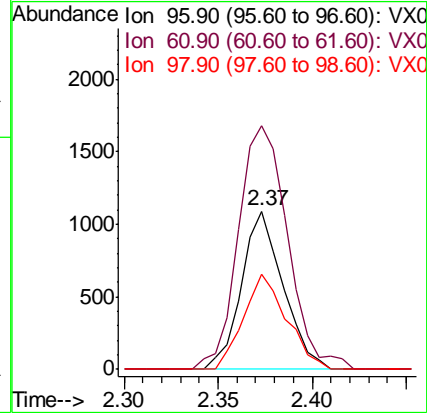
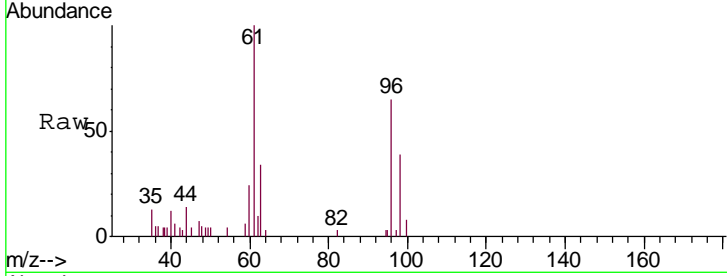




#12
 1,1-Dichloroethene
 Concen: 0.718 ug/l
 RT: 2.37 min Scan# 200
 Delta R.T. -0.00 min
 Lab File: VX008811.D
 Acq: 10 Apr 2019 17:29

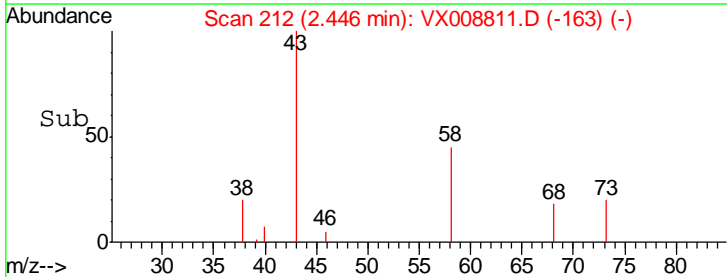
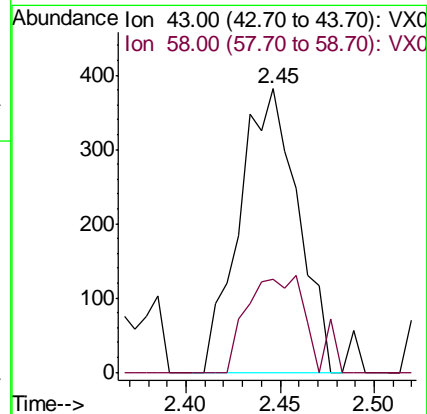
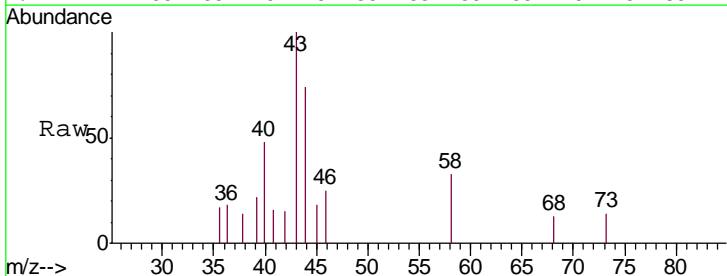
Instrument : MSVOA_X
 ClientSampled : DUP-0507-190409

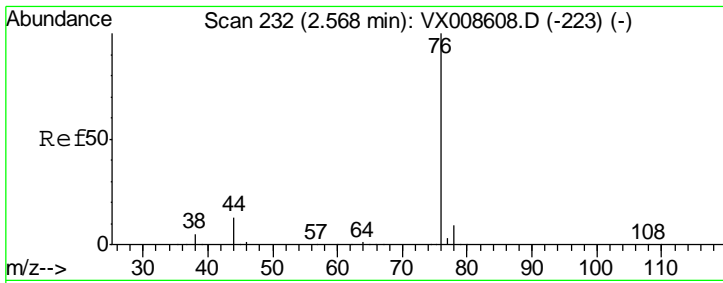
Tgt Ion	Resp	Lower	Upper
96	1676		
61	154.2	140.9	211.3
98	60.7	52.1	78.1



#16
 Acetone
 Concen: 0.483 ug/l
 RT: 2.45 min Scan# 212
 Delta R.T. -0.00 min
 Lab File: VX008811.D
 Acq: 10 Apr 2019 17:29

Tgt Ion	Resp	Lower	Upper
43	820		
58	32.7	24.8	37.2

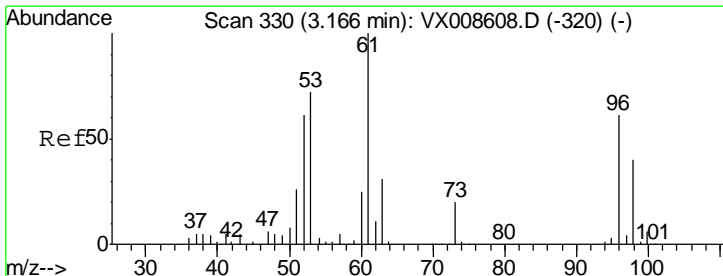
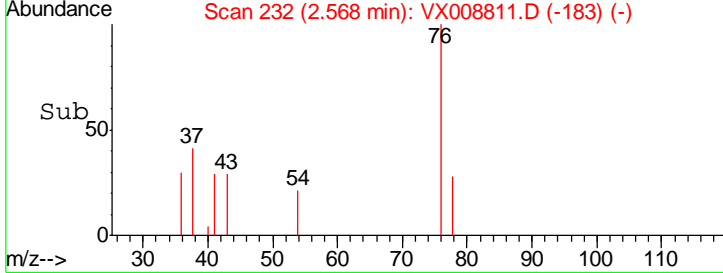
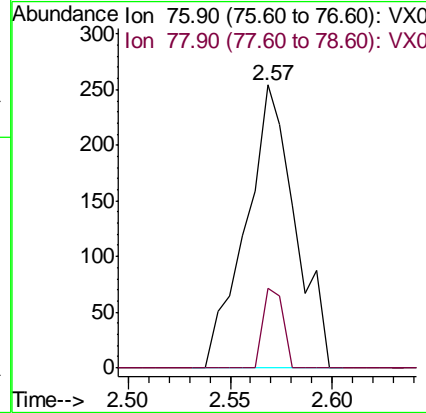
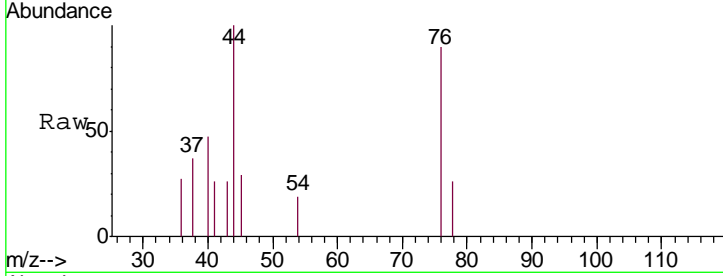




#17
 Carbon Disulfide
 Concen: Below Cal
 RT: 2.57 min Scan# 232
 Delta R.T. 0.00 min
 Lab File: VX008811.D
 Acq: 10 Apr 2019 17:29

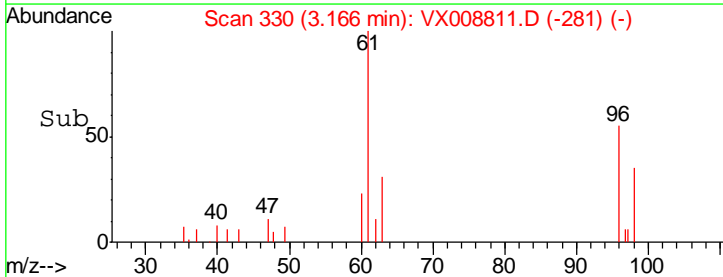
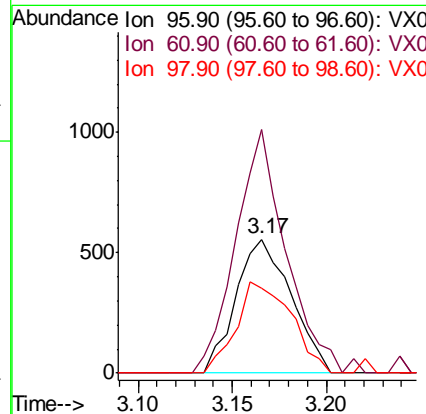
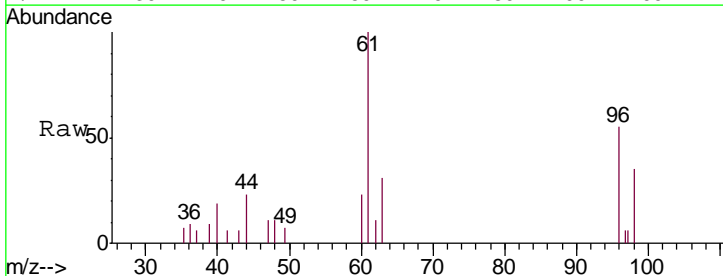
Instrument : MSVOA_X
 ClientSampleId : DUP-0507-190409

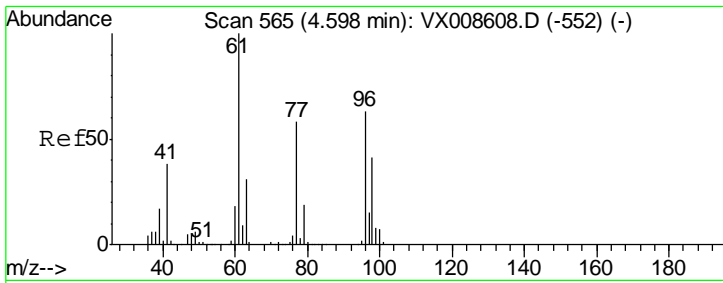
Tgt Ion	Resp	Lower	Upper
76	100		
78	28.3	7.1	10.7#



#21
 trans-1,2-Dichloroethene
 Concen: 0.447 ug/l
 RT: 3.17 min Scan# 330
 Delta R.T. -0.00 min
 Lab File: VX008811.D
 Acq: 10 Apr 2019 17:29

Tgt Ion	Resp	Lower	Upper
96	100		
61	181.8	132.1	198.1
98	63.7	52.2	78.2

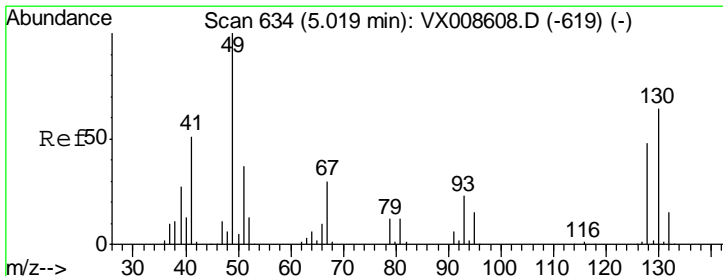
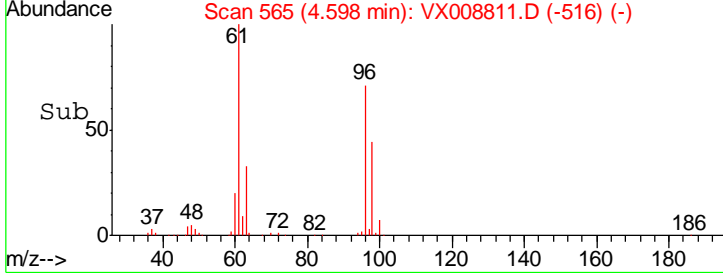
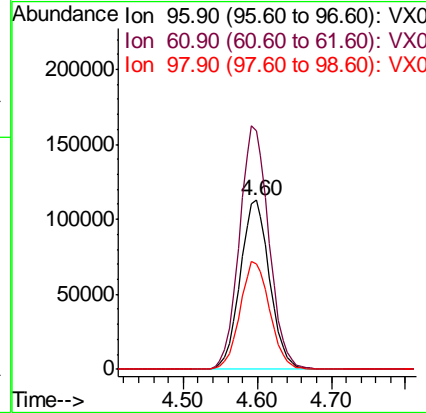
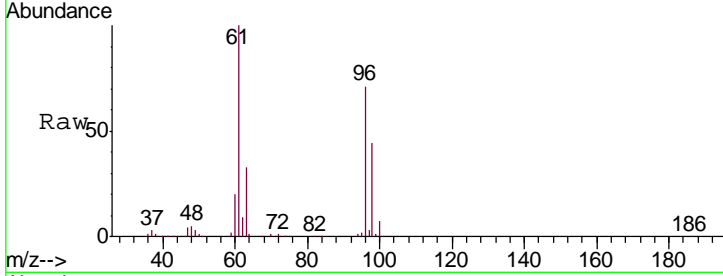




#27
 cis-1,2-Dichloroethene
 Concen: 107.814 ug/l
 RT: 4.60 min Scan# 565
 Delta R.T. -0.00 min
 Lab File: VX008811.D
 Acq: 10 Apr 2019 17:29

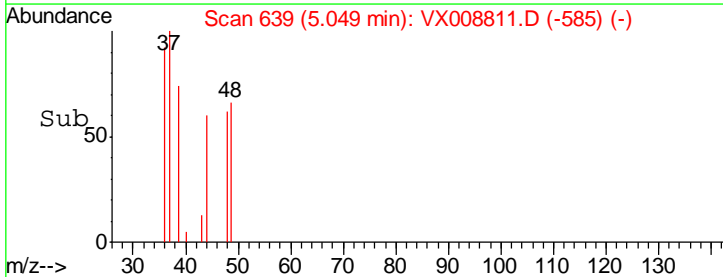
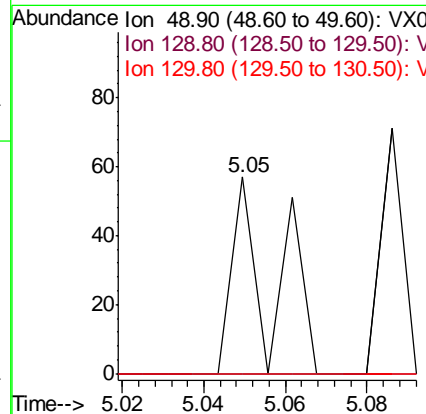
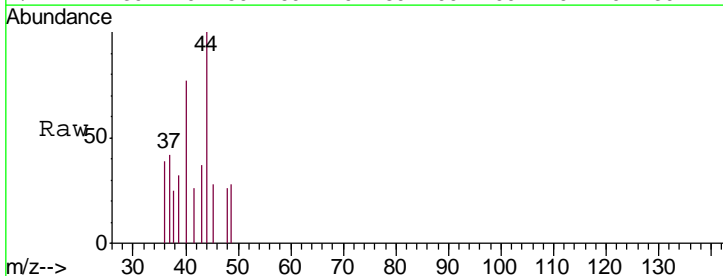
Instrument :
 MSVOA_X
ClientSampled :
 DUP-0507-190409

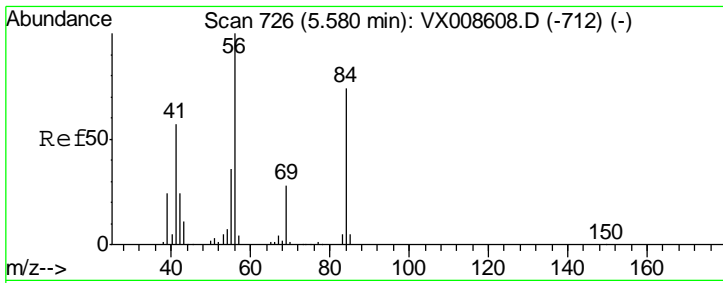
Tgt Ion	Resp	Lower	Upper
96	313194		
Ion Ratio			
96	100		
61	144.4	0.0	327.6
98	64.1	0.0	128.6



#28
 Bromochloromethane
 Concen: Below Cal
 RT: 5.05 min Scan# 639
 Delta R.T. 0.03 min
 Lab File: VX008811.D
 Acq: 10 Apr 2019 17:29

Tgt Ion	Resp	Lower	Upper
49	40		
Ion Ratio			
49	100		
129	0.0	0.0	3.6
130	0.0	49.3	73.9#

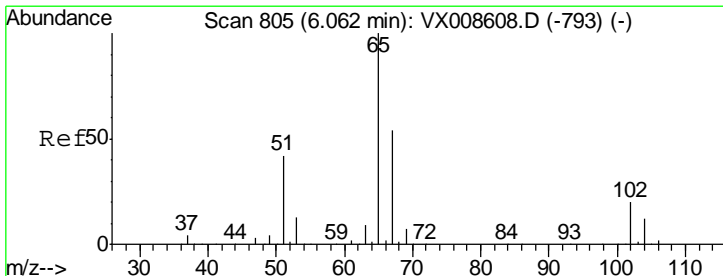
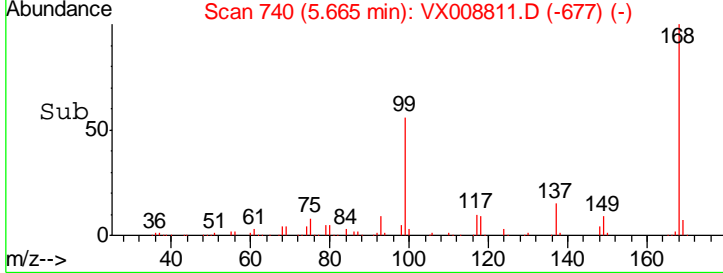
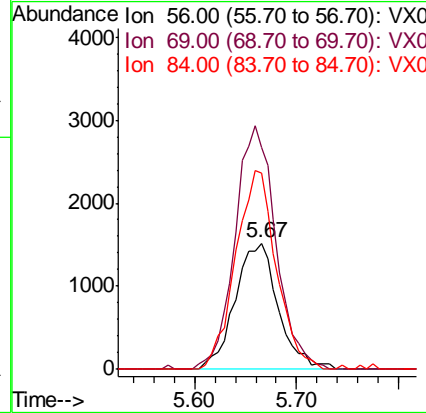
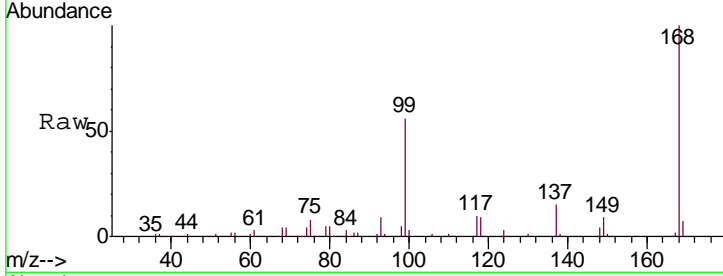




#31
 Cyclohexane
 Concen: 0.875 ug/l
 RT: 5.67 min Scan# 740
 Delta R.T. 0.09 min
 Lab File: VX008811.D
 Acq: 10 Apr 2019 17:29

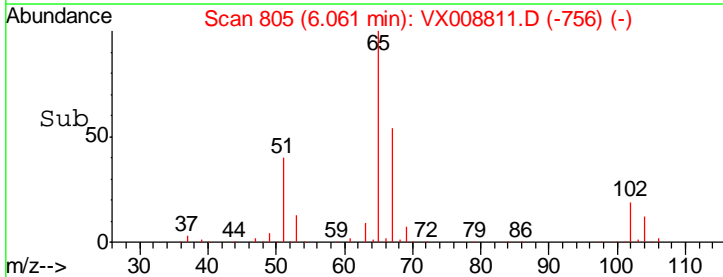
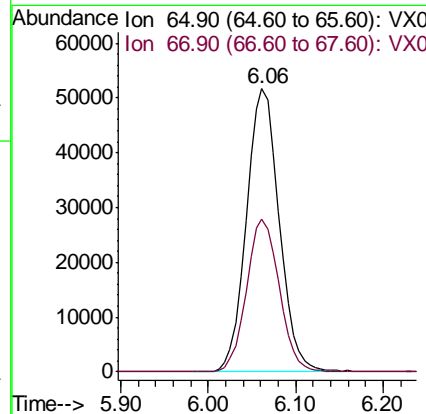
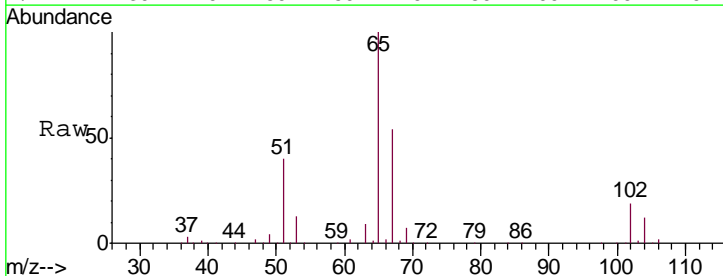
Instrument : MSVOA_X
 ClientSampled : DUP-0507-190409

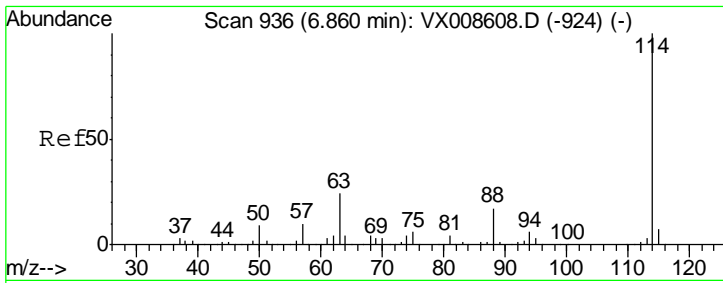
Tgt Ion	Resp	Lower	Upper
56	4454		
69	175.3	22.6	33.8#
84	155.5	59.3	88.9#



#33
 1,2-Dichloroethane-d4
 Concen: 45.707 ug/l
 RT: 6.06 min Scan# 805
 Delta R.T. -0.00 min
 Lab File: VX008811.D
 Acq: 10 Apr 2019 17:29

Tgt Ion	Resp	Lower	Upper
65	134699		
67	53.8	0.0	107.2

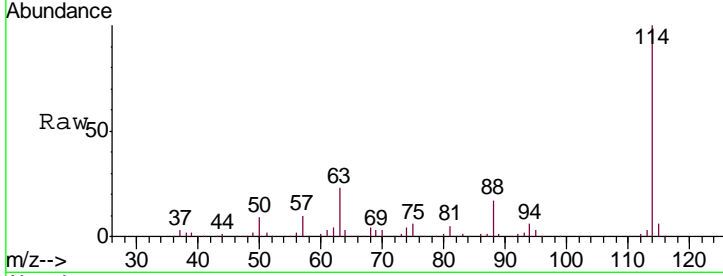




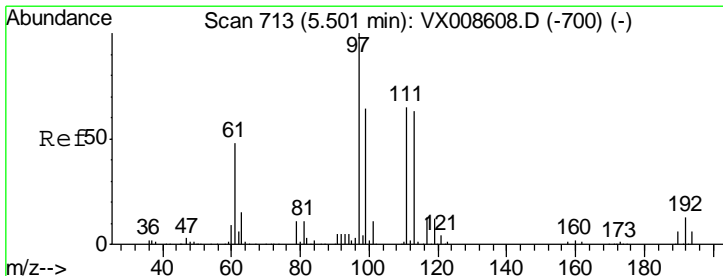
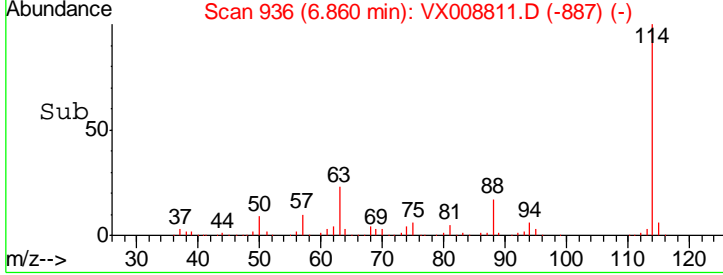
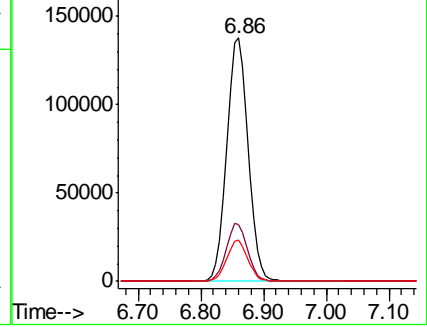
#34
 1,4-Difluorobenzene
 Concen: 50.000 ug/l
 RT: 6.86 min Scan# 936
 Delta R.T. -0.00 min
 Lab File: VX008811.D
 Acq: 10 Apr 2019 17:29

Instrument :
 MSVOA_X
 ClientSampleId :
 DUP-0507-190409

Tgt Ion	Resp	Lower	Upper
114	326164		
63	23.4	0.0	47.2
88	16.8	0.0	34.0

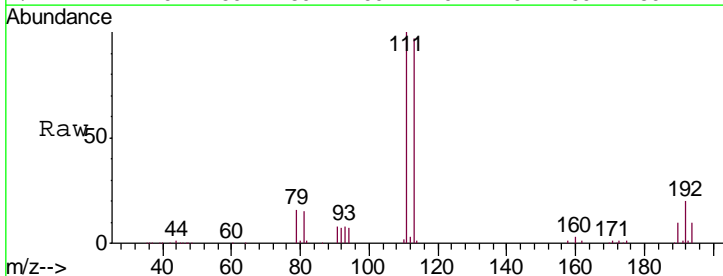


Abundance Ion 113.90 (113.60 to 114.60): V
 Ion 63.00 (62.70 to 63.70): VX0
 Ion 87.90 (87.60 to 88.60): VX0

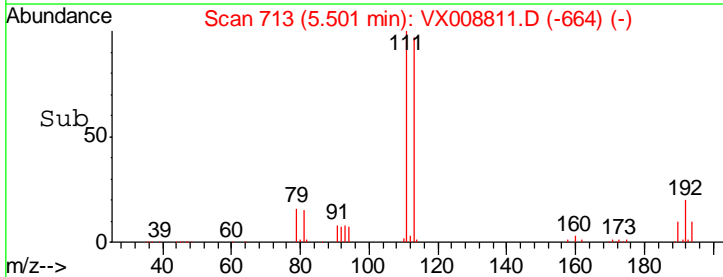
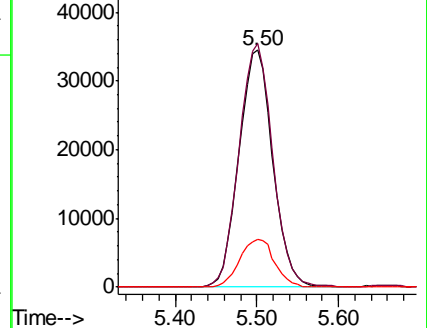


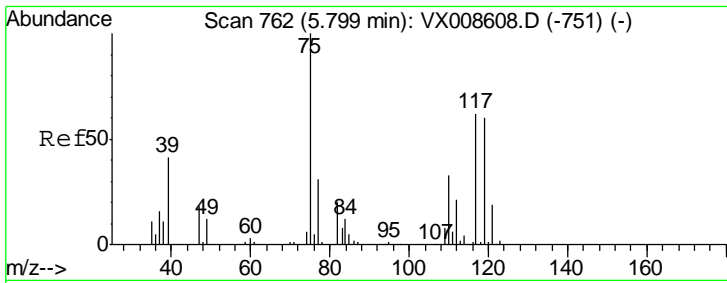
#35
 Dibromofluoromethane
 Concen: 47.620 ug/l
 RT: 5.50 min Scan# 713
 Delta R.T. -0.00 min
 Lab File: VX008811.D
 Acq: 10 Apr 2019 17:29

Tgt Ion	Resp	Lower	Upper
113	99305		
111	102.2	83.4	125.2
192	20.7	16.1	24.1



Abundance Ion 112.80 (112.50 to 113.50): V
 Ion 110.80 (110.50 to 111.50): V
 Ion 191.70 (191.40 to 192.40): V

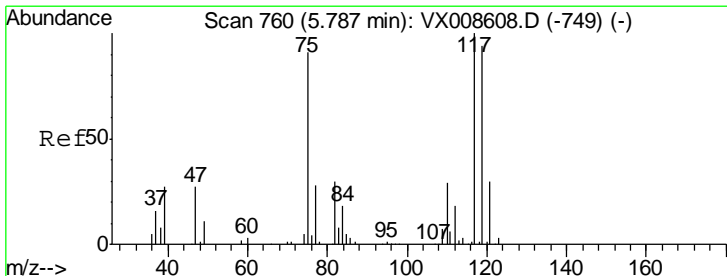
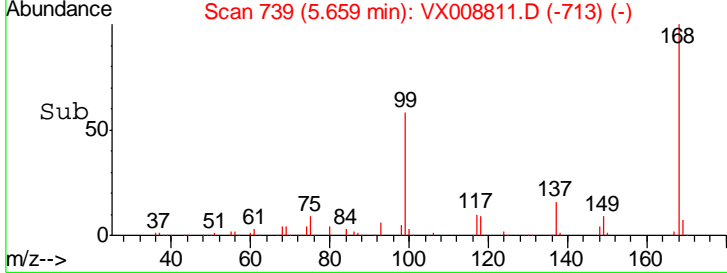
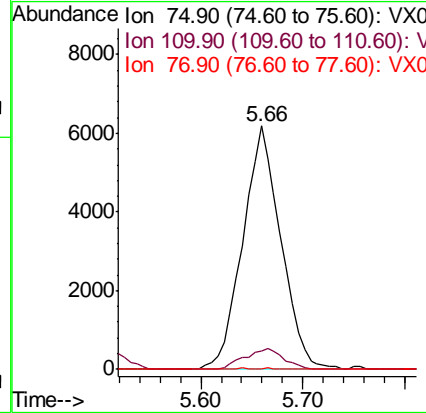
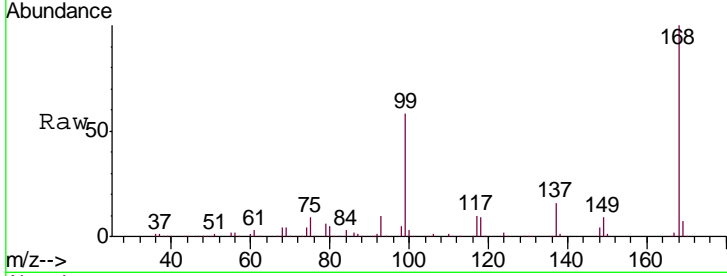




#36
 1,1-Dichloropropene
 Concen: 4.492 ug/l
 RT: 5.66 min Scan# 739
 Delta R.T. -0.14 min
 Lab File: VX008811.D
 Acq: 10 Apr 2019 17:29

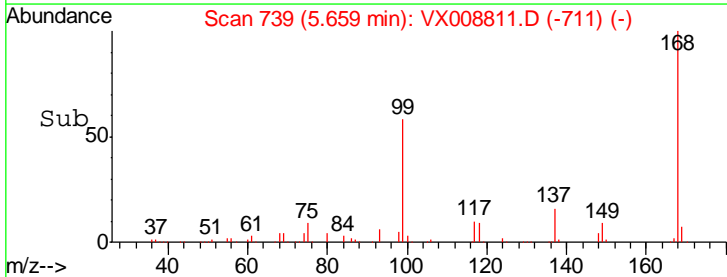
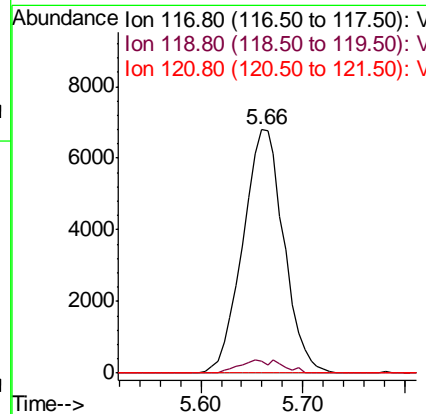
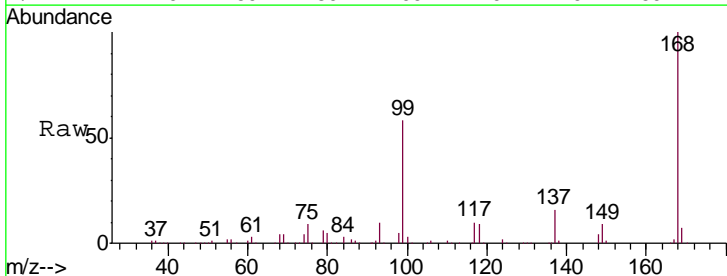
Instrument :
 MSVOA_X
 ClientSampleID :
 DUP-0507-190409

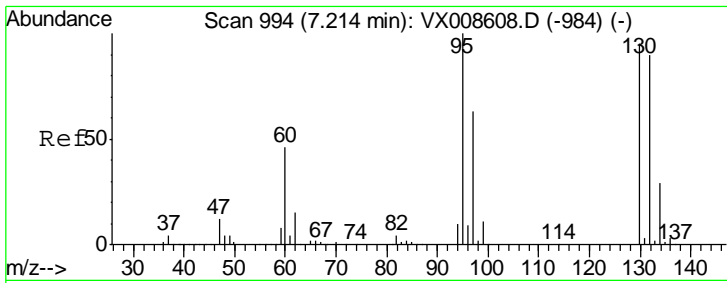
Tgt Ion	Resp	Lower	Upper
75	16014		
110	8.8	16.4	49.2#
77	0.1	24.7	37.1#



#38
 Carbon Tetrachloride
 Concen: 6.441 ug/l
 RT: 5.66 min Scan# 739
 Delta R.T. -0.13 min
 Lab File: VX008811.D
 Acq: 10 Apr 2019 17:29

Tgt Ion	Resp	Lower	Upper
117	19007		
119	4.9	75.0	112.6#
121	0.0	24.3	36.5#

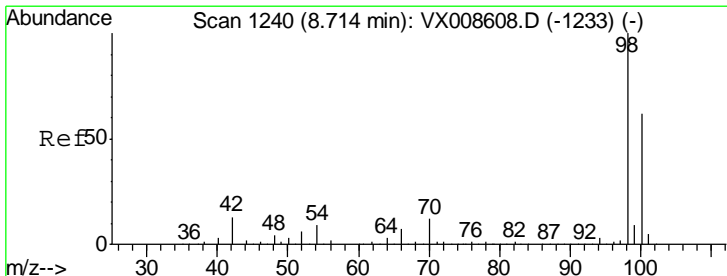
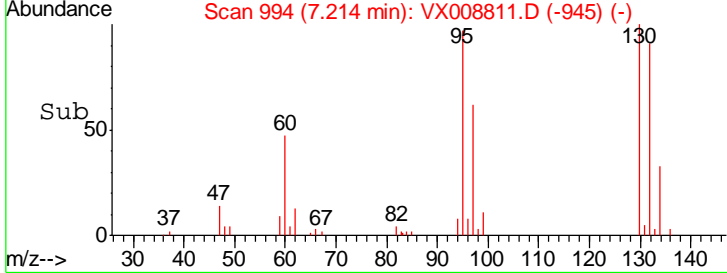
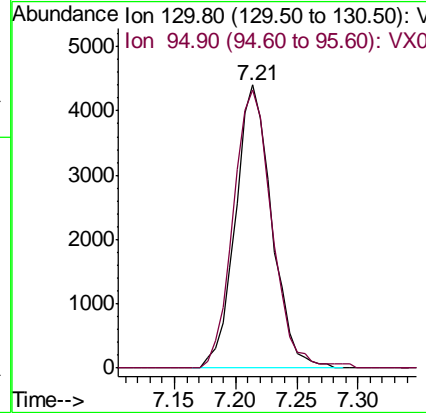
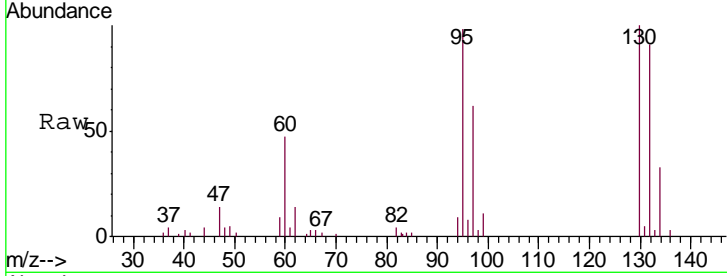




#44
 Trichloroethene
 Concen: 3.659 ug/l
 RT: 7.21 min Scan# 994
 Delta R.T. -0.00 min
 Lab File: VX008811.D
 Acq: 10 Apr 2019 17:29

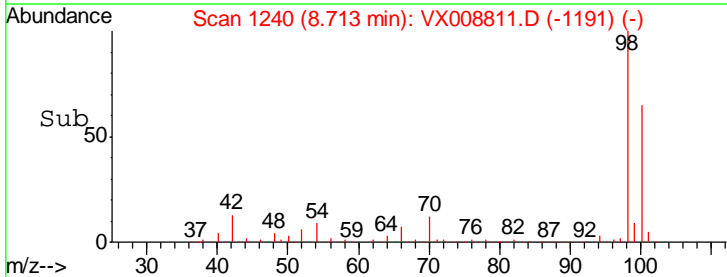
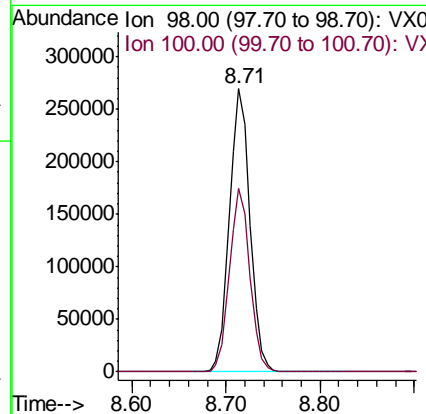
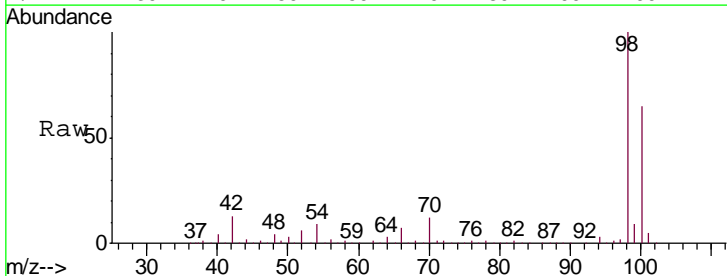
Instrument :
 MSVOA_X
 ClientSampleId :
 DUP-0507-190409

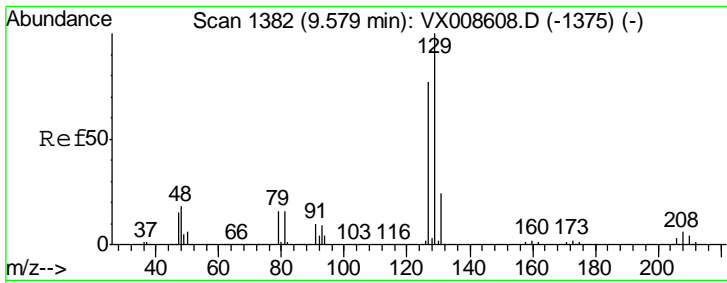
Tgt Ion: 130 Resp: 9052
 Ion Ratio Lower Upper
 130 100
 95 98.3 0.0 209.8



#50
 Toluene-d8
 Concen: 49.078 ug/l
 RT: 8.71 min Scan# 1240
 Delta R.T. -0.00 min
 Lab File: VX008811.D
 Acq: 10 Apr 2019 17:29

Tgt Ion: 98 Resp: 407511
 Ion Ratio Lower Upper
 98 100
 100 64.3 51.4 77.0

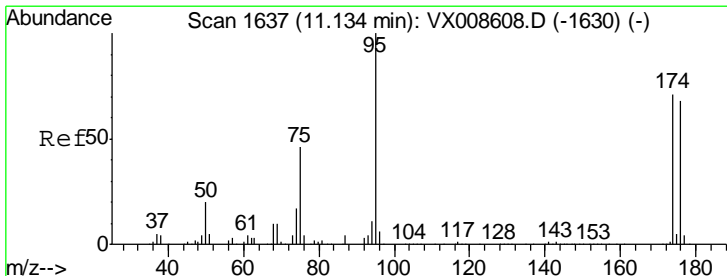
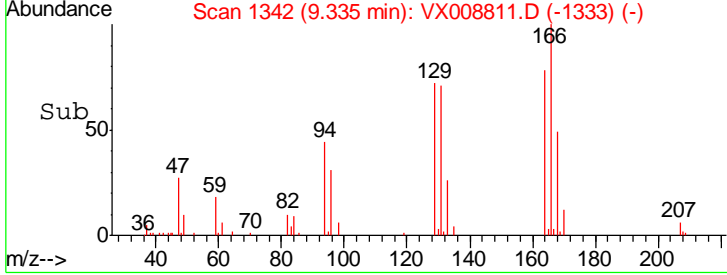
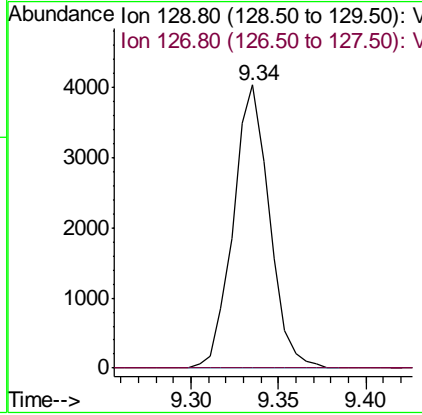
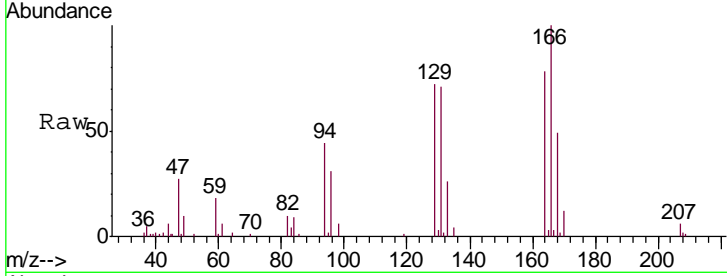




#60
 Dibromochloromethane
 Concen: 2.452 ug/l
 RT: 9.34 min Scan# 1342
 Delta R.T. -0.24 min
 Lab File: VX008811.D
 Acq: 10 Apr 2019 17:29

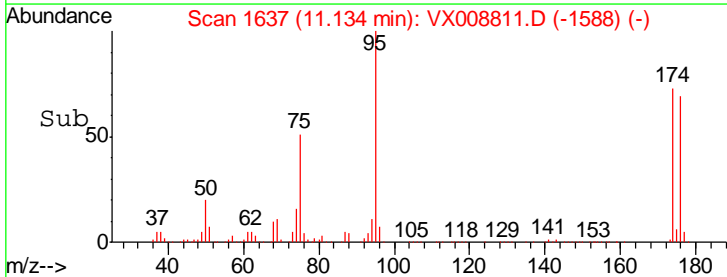
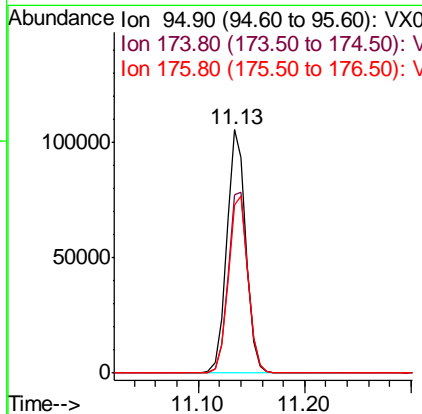
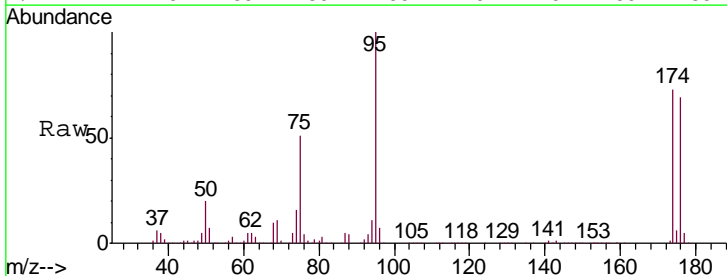
Instrument :
 MSVOA_X
 ClientSampleId :
 DUP-0507-190409

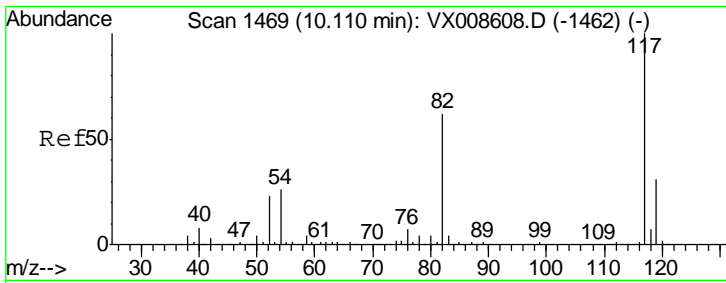
Tgt Ion: 129 Resp: 5808
 Ion Ratio Lower Upper
 129 100
 127 0.0 38.5 115.3#



#62
 4-Bromofluorobenzene
 Concen: 44.713 ug/l
 RT: 11.13 min Scan# 1637
 Delta R.T. -0.00 min
 Lab File: VX008811.D
 Acq: 10 Apr 2019 17:29

Tgt Ion: 95 Resp: 131658
 Ion Ratio Lower Upper
 95 100
 174 77.1 0.0 151.8
 176 75.2 0.0 145.8

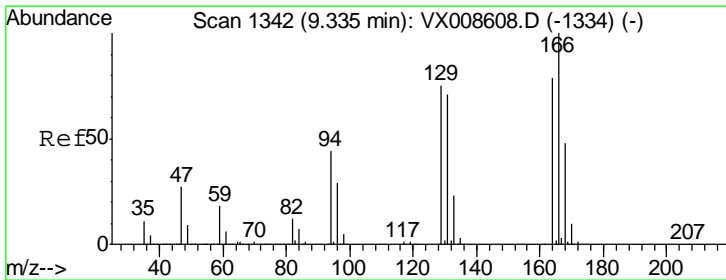
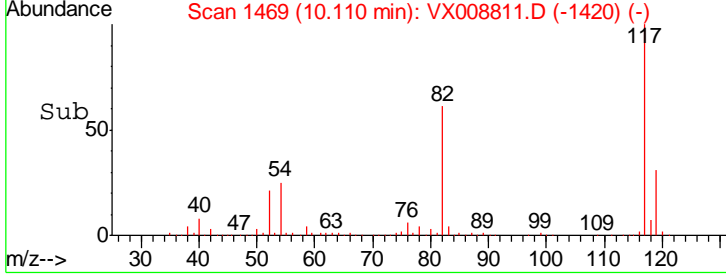
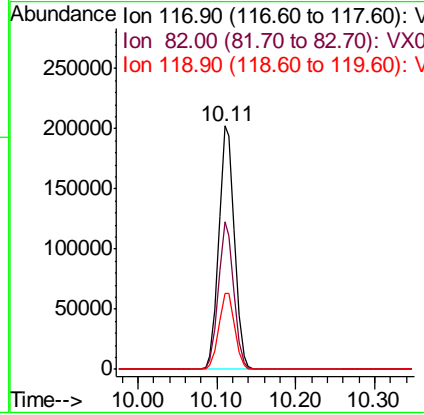
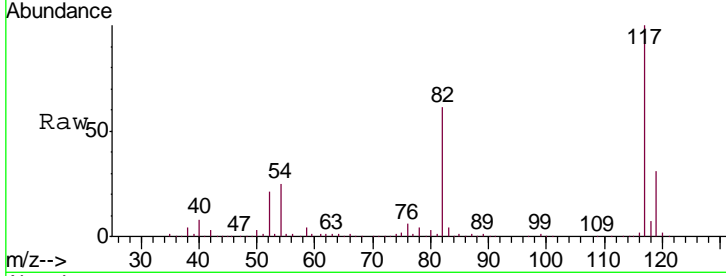




#63
 Chlorobenzene-d5
 Concen: 50.000 ug/l
 RT: 10.11 min Scan# 1469
 Delta R.T. -0.00 min
 Lab File: VX008811.D
 Acq: 10 Apr 2019 17:29

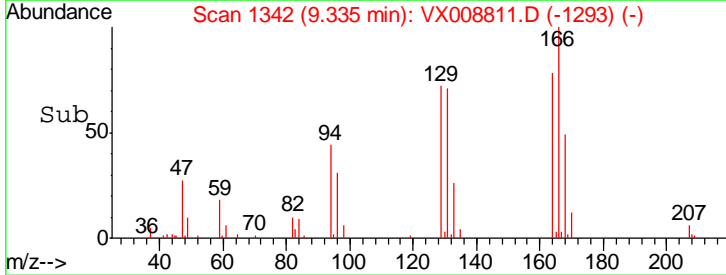
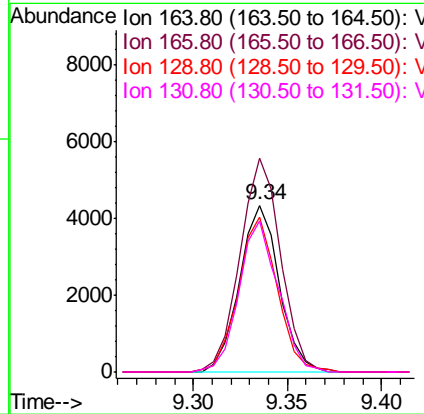
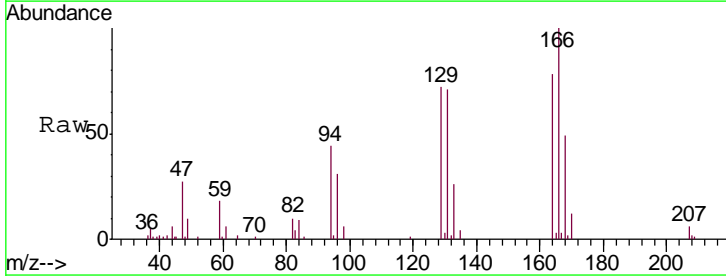
Instrument :
 MSVOA_X
 ClientSampled :
 DUP-0507-190409

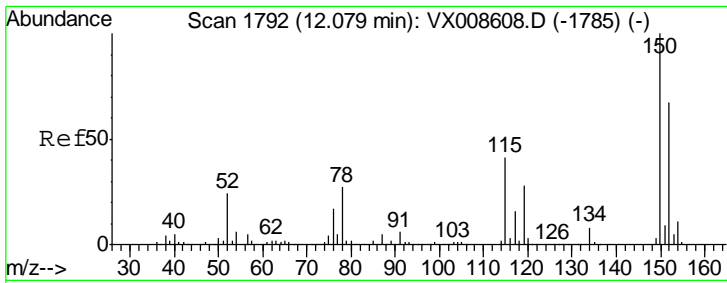
Tgt Ion	Resp	Lower	Upper
117	279602		
82	60.7	49.6	74.4
119	31.4	25.0	37.4



#64
 Tetrachloroethene
 Concen: 3.056 ug/l
 RT: 9.34 min Scan# 1342
 Delta R.T. -0.00 min
 Lab File: VX008811.D
 Acq: 10 Apr 2019 17:29

Tgt Ion	Resp	Lower	Upper
164	6331		
166	128.1	101.0	151.6
129	92.9	75.8	113.8
131	90.6	71.8	107.8

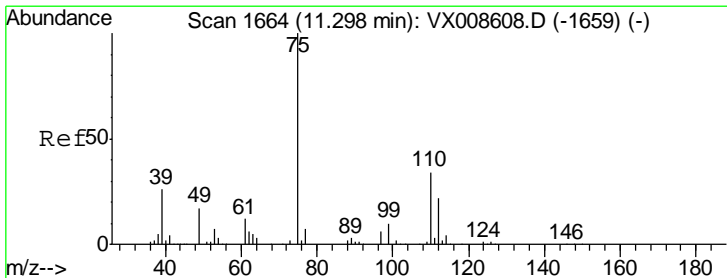
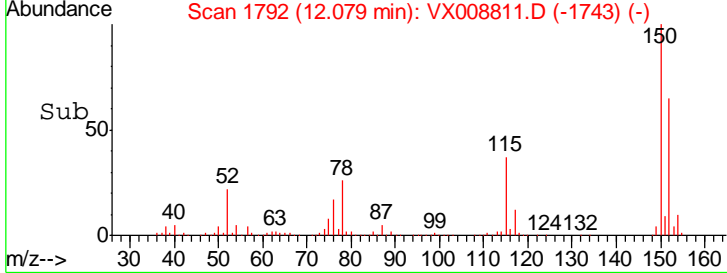
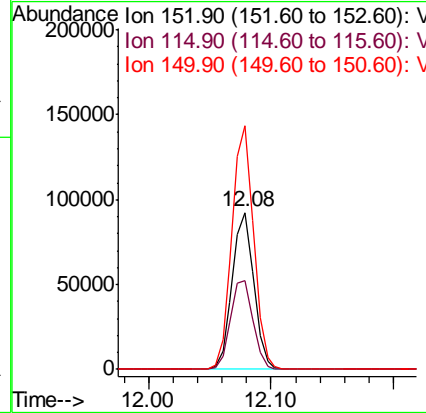
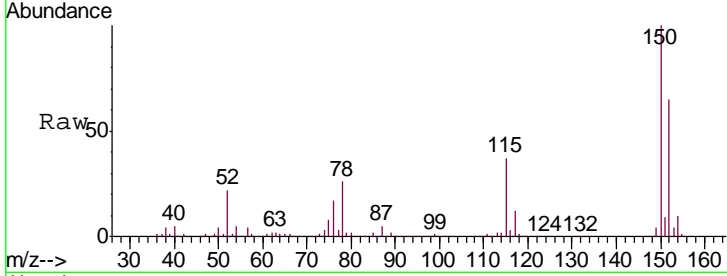




#72
 1,4-Dichlorobenzene-d4
 Concen: 50.000 ug/l
 RT: 12.08 min Scan# 1792
 Delta R.T. -0.00 min
 Lab File: VX008811.D
 Acq: 10 Apr 2019 17:29

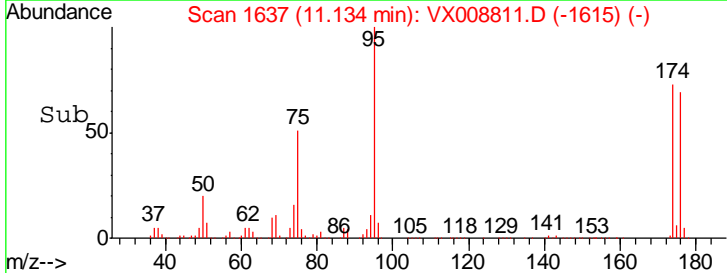
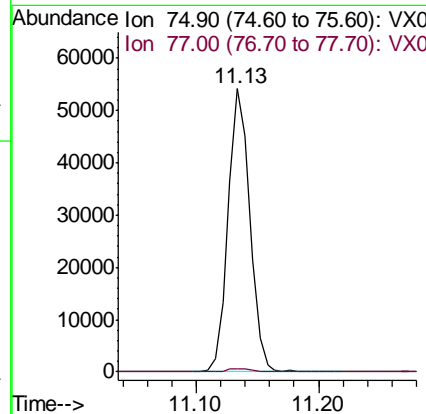
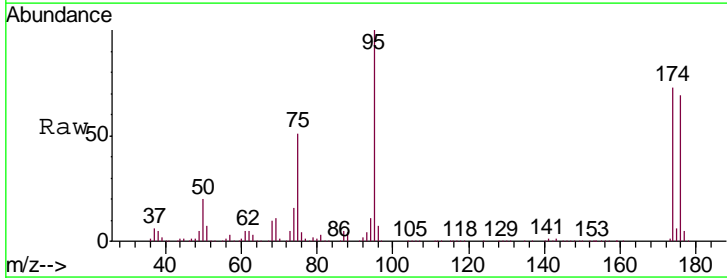
Instrument : MSVOA_X
 ClientSampled : DUP-0507-190409

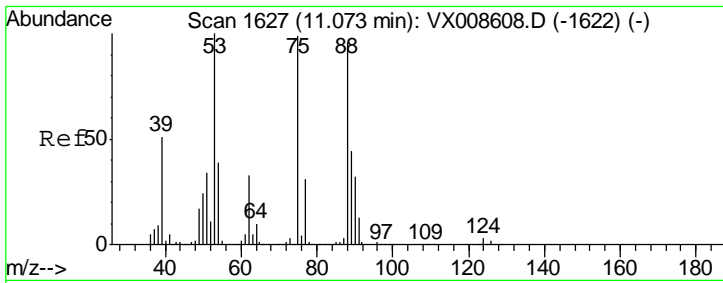
Tgt Ion	Resp	Lower	Upper
152	112285		
115	59.2	43.5	130.5
150	156.4	0.0	348.8



#76
 1,2,3-Trichloropropane
 Concen: 21.622 ug/l
 RT: 11.13 min Scan# 1637
 Delta R.T. -0.16 min
 Lab File: VX008811.D
 Acq: 10 Apr 2019 17:29

Tgt Ion	Resp	Lower	Upper
75	66694		
75	100		
77	1.2	22.3	66.8#

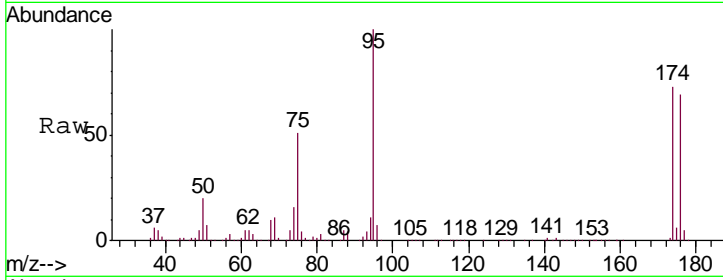




#81
 trans-1,4-Dichloro-2-butene
 Concen: 59.601 ug/l
 RT: 11.13 min Scan# 1637
 Delta R.T. 0.06 min
 Lab File: VX008811.D
 Acq: 10 Apr 2019 17:29

Instrument :
 MSVOA_X
 ClientSampled :
 DUP-0507-190409

Tgt Ion	Resp	Lower	Upper
75	100		
53	0.1	81.3	121.9#
89	0.1	35.6	53.4#



Abundance Ion 74.90 (74.60 to 75.60): VX0
 Ion 53.00 (52.70 to 53.70): VX0
 Ion 88.90 (88.60 to 89.60): VX0

