

Data Path : Z:\VOASRV\HPCHEM1\MSVOA X\DATA\VX041019\
 Data File : VX008803.D
 Acq On : 10 Apr 2019 14:23
 Operator : JC/SP
 Sample : K2349-01
 Misc : 5.0mL/MSVOA X/WATER
 ALS Vial : 10 Sample Multiplier: 1

Instrument :
 MSVOA_X
 ClientSampleId :
 ST008MW040-190408

Integration Parameters: RTEINT.P

Integrator: RTE
 Smoothing : ON Filtering: 5
 Sampling : 1 Min Area: 3 % of largest Peak
 Start Thrs: 0.2 Max Peaks: 100
 Stop Thrs : 0 Peak Location: TOP

If leading or trailing edge < 100 prefer < Baseline drop else tangent >
 Peak separation: 5

Method : Z:\VOASRV\HPCHEM1\MSVOA_X\METHOD\82X040319W.M
 Title : SW846 8260

Signal : TIC

peak #	R.T. min	first scan	max scan	last scan	PK TY	peak height	corr. area	corr. % max.	% of total
1	2.605	233	238	248	rVB	7311	14164	1.24%	0.248%
2	5.501	700	713	728	rBV	116660	336570	29.51%	5.892%
3	5.659	728	739	757	rVB	213183	602616	52.84%	10.549%
4	6.062	792	805	823	rBV	148855	391089	34.29%	6.846%
5	6.860	924	936	947	rBV	343936	817411	71.67%	14.309%
6	7.214	988	994	1002	rBV4	5656	13034	1.14%	0.228%
7	8.714	1233	1240	1256	rBV	740211	1140546	100.00%	19.965%
8	10.110	1462	1469	1480	rBV	682195	924304	81.04%	16.180%
9	11.134	1631	1637	1648	rBV	540515	683781	59.95%	11.969%
10	12.079	1786	1792	1802	rVB	604952	789216	69.20%	13.815%

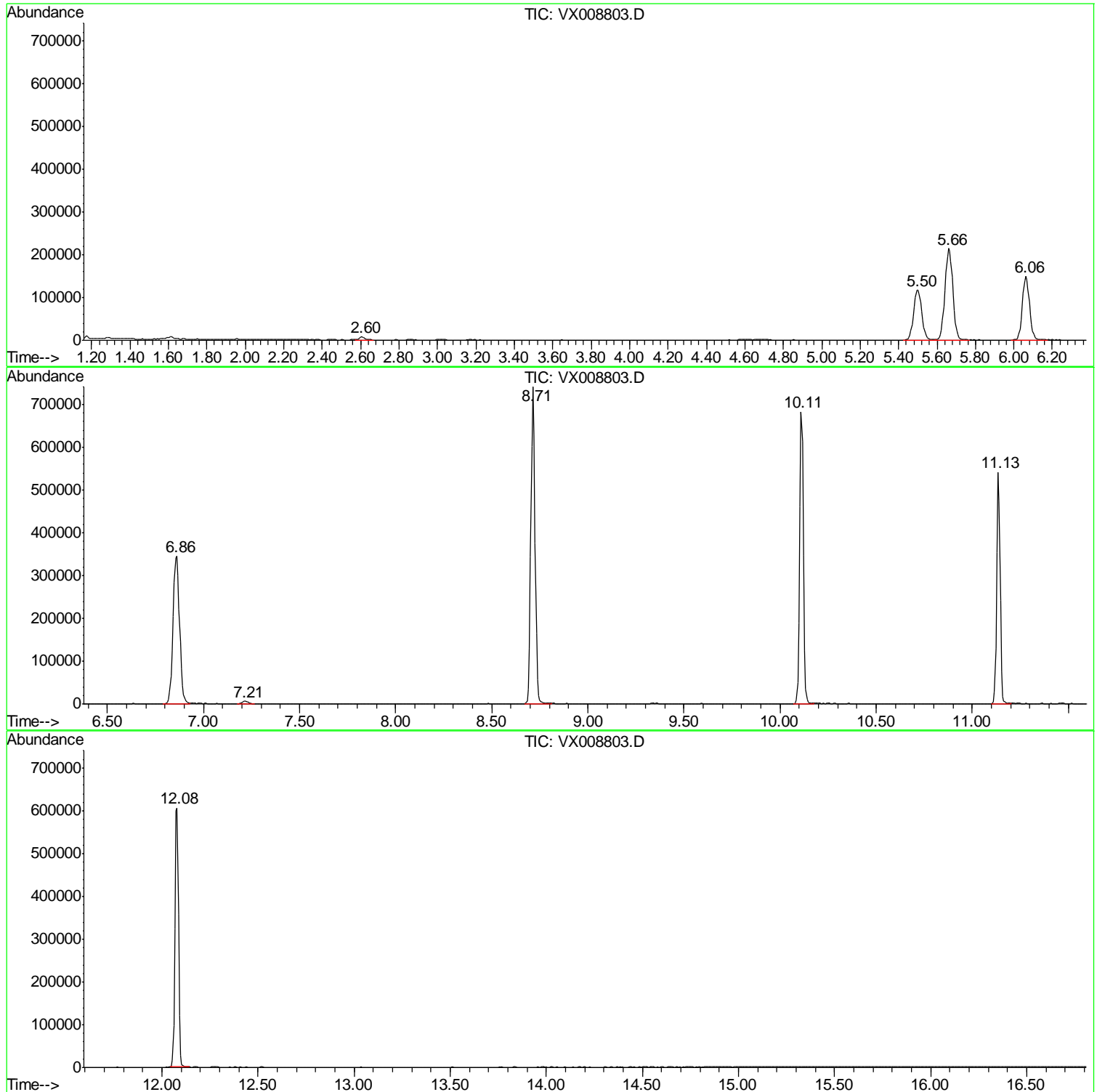
Sum of corrected areas: 5712731

Data Path : Z:\VOASRV\HPCHEM1\MSVOA X\DATA\VX041019\
Data File : VX008803.D
Acq On : 10 Apr 2019 14:23
Operator : JC/SP
Sample : K2349-01
Misc : 5.0mL/MSVOA X/WATER
ALS Vial : 10 Sample Multiplier: 1

Instrument :
MSVOA_X
ClientSampled :
ST008MW040-190408

Quant Method : Z:\VOASRV\HPCHEM1\MSVOA_X\METHOD\82X040319W.M
Quant Title : SW846 8260

TIC Library : C:\DATABASE\NIST11.L
TIC Integration Parameters: LSCINT.P



Data Path : Z:\VOASRV\HPCHEM1\MSVOA_X\DATA\VX041019\
Data File : VX008803.D
Acq On : 10 Apr 2019 14:23
Operator : JC/SP
Sample : K2349-01
Misc : 5.0mL/MSVOA_X/WATER
ALS Vial : 10 Sample Multiplier: 1

Instrument :
MSVOA_X
ClientSampleId :
ST008MW040-190408

Quant Method : Z:\VOASRV\HPCHEM1\MSVOA_X\METHOD\82X040319W.M
Quant Title : SW846 8260

TIC Library : C:\DATABASE\NIST11.L
TIC Integration Parameters: LSCINT.P

No Library Search Compounds Detected

Data Path : Z:\VOASRV\HPCHEM1\MSVOA_X\DATA\VX041019\
Data File : VX008803.D
Acq On : 10 Apr 2019 14:23
Operator : JC/SP
Sample : K2349-01
Misc : 5.0mL/MSVOA_X/WATER
ALS Vial : 10 Sample Multiplier: 1

Instrument :
MSVOA_X
ClientSampleId :
ST008MW040-190408

Quant Method : Z:\VOASRV\HPCHEM1\MSVOA_X\METHOD\82X040319W.M
Quant Title : SW846 8260

TIC Library : C:\DATABASE\NIST11.L
TIC Integration Parameters: LSCINT.P

TIC Top Hit name	RT	EstConc	Units	Response	--Internal Standard--			
					#	RT	Resp	Conc
