

Data Path : Z:\VOASRV\HPCHEM1\MSVOA X\DATA\VX041019\
 Data File : VX008805.D
 Acq On : 10 Apr 2019 15:10
 Operator : JC/SP
 Sample : K2349-04
 Misc : 5.0mL/MSVOA X/WATER
 ALS Vial : 12 Sample Multiplier: 1

Instrument :
 MSVOA_X
 ClientSampleId :
 SS037MW098-190408

Integration Parameters: RTEINT.P
 Integrator: RTE
 Smoothing : ON Filtering: 5
 Sampling : 1 Min Area: 3 % of largest Peak
 Start Thrs: 0.2 Max Peaks: 100
 Stop Thrs : 0 Peak Location: TOP

If leading or trailing edge < 100 prefer < Baseline drop else tangent >
 Peak separation: 5

Method : Z:\VOASRV\HPCHEM1\MSVOA_X\METHOD\82X040319W.M
 Title : SW846 8260

Signal : TIC

peak #	R.T. min	first scan	max scan	last scan	PK TY	peak height	corr. area	corr. % max.	% of total
1	2.604	230	238	247	rBV	10763	22496	1.95%	0.385%
2	5.500	700	713	728	rBV	119030	340078	29.42%	5.816%
3	5.659	728	739	753	rVB	214942	610764	52.84%	10.446%
4	6.061	794	805	819	rBV	149486	391872	33.90%	6.702%
5	6.860	925	936	950	rBV	348921	829906	71.80%	14.194%
6	7.213	987	994	1004	rBV2	13094	29336	2.54%	0.502%
7	8.713	1232	1240	1252	rBV	746127	1155830	100.00%	19.768%
8	9.335	1336	1342	1348	rBV	20310	30971	2.68%	0.530%
9	10.109	1461	1469	1479	rBV	693317	936987	81.07%	16.025%
10	11.133	1632	1637	1648	rBV	551033	694556	60.09%	11.879%
11	12.078	1786	1792	1805	rBV	625129	804245	69.58%	13.755%

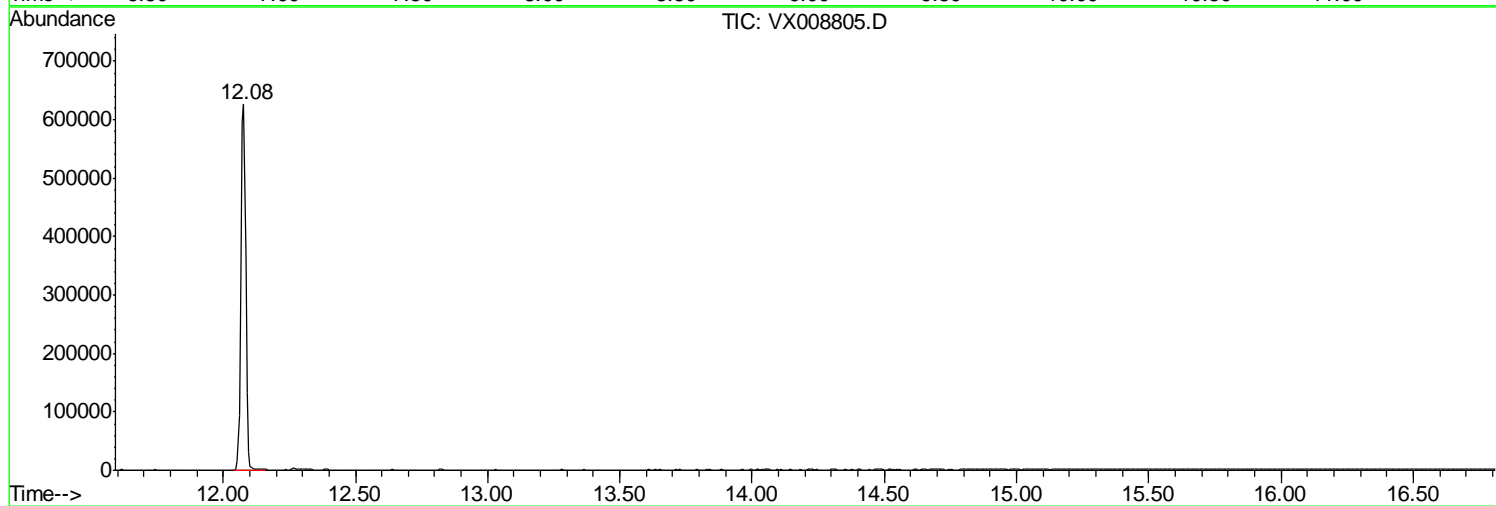
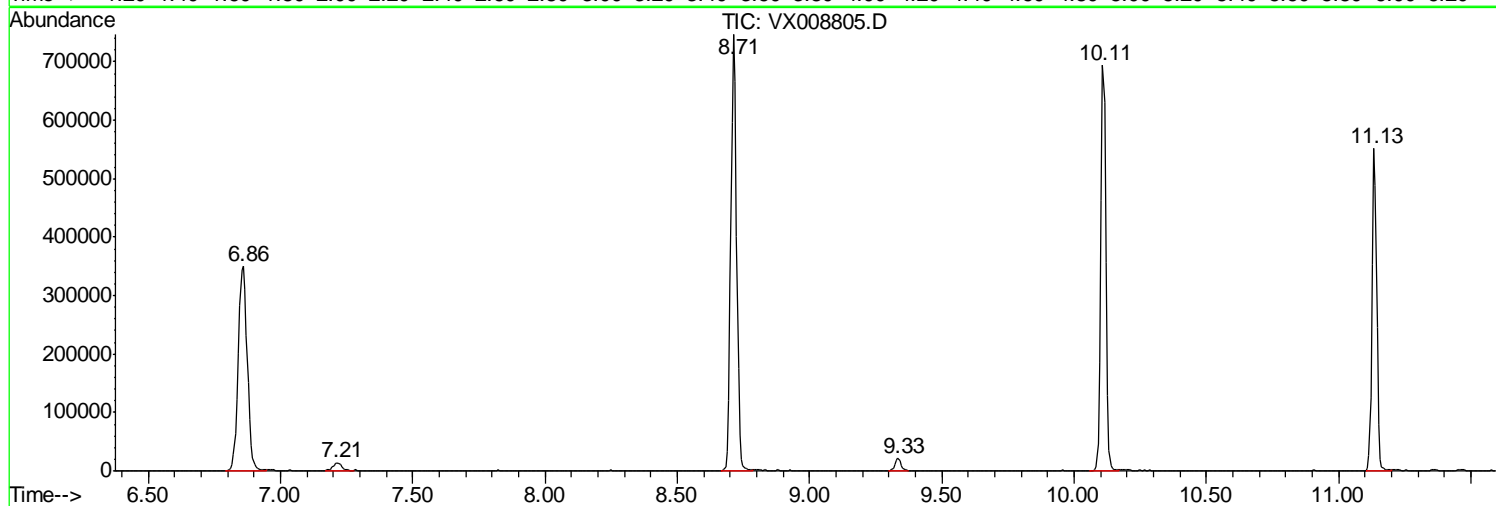
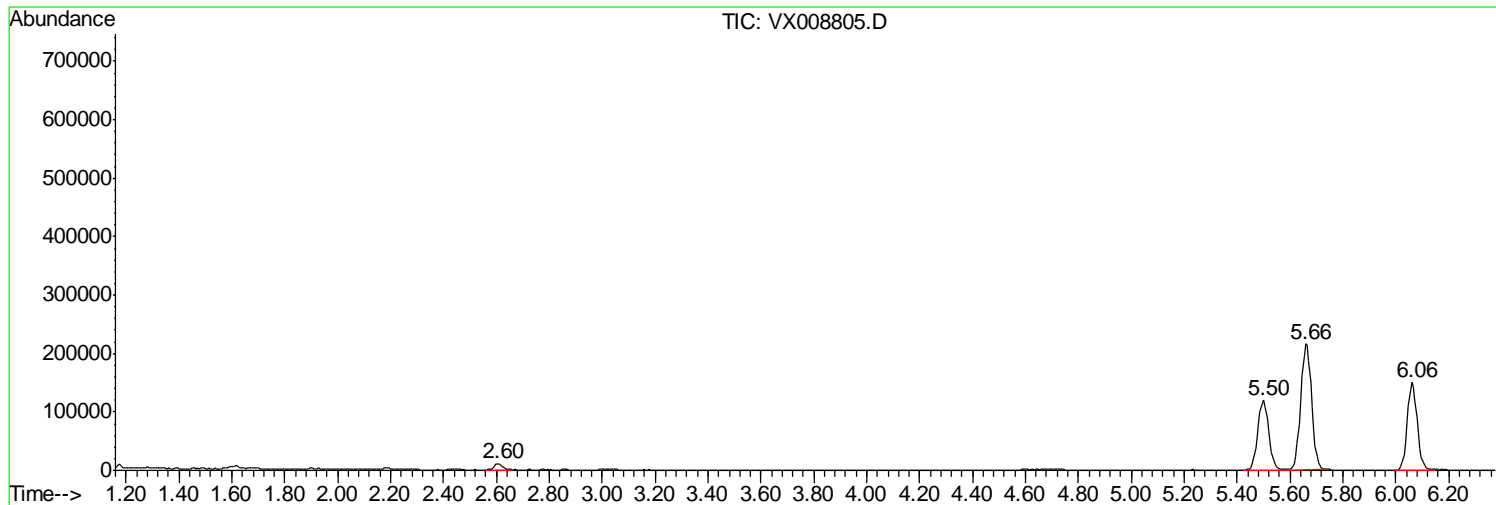
Sum of corrected areas: 5847041

Data Path : Z:\VOASRV\HPCHEM1\MSVOA X\DATA\VX041019\
Data File : VX008805.D
Acq On : 10 Apr 2019 15:10
Operator : JC/SP
Sample : K2349-04
Misc : 5.0mL/MSVOA X/WATER
ALS Vial : 12 Sample Multiplier: 1

Instrument :
MSVOA_X
ClientSampled :
SS037MW098-190408

Quant Method : Z:\VOASRV\HPCHEM1\MSVOA_X\METHOD\82X040319W.M
Quant Title : SW846 8260

TIC Library : C:\DATABASE\NIST11.L
TIC Integration Parameters: LSCINT.P



Data Path : Z:\VOASRV\HPCHEM1\MSVOA_X\DATA\VX041019\
Data File : VX008805.D
Acq On : 10 Apr 2019 15:10
Operator : JC/SP
Sample : K2349-04
Misc : 5.0mL/MSVOA_X/WATER
ALS Vial : 12 Sample Multiplier: 1

Instrument :
MSVOA_X
ClientSampleId :
SS037MW098-190408

Quant Method : Z:\VOASRV\HPCHEM1\MSVOA_X\METHOD\82X040319W.M
Quant Title : SW846 8260

TIC Library : C:\DATABASE\NIST11.L
TIC Integration Parameters: LSCINT.P

No Library Search Compounds Detected

Data Path : Z:\VOASRV\HPCHEM1\MSVOA_X\DATA\VX041019\
Data File : VX008805.D
Acq On : 10 Apr 2019 15:10
Operator : JC/SP
Sample : K2349-04
Misc : 5.0mL/MSVOA_X/WATER
ALS Vial : 12 Sample Multiplier: 1

Instrument :
MSVOA_X
ClientSampleId :
SS037MW098-190408

Quant Method : Z:\VOASRV\HPCHEM1\MSVOA_X\METHOD\82X040319W.M
Quant Title : SW846 8260

TIC Library : C:\DATABASE\NIST11.L
TIC Integration Parameters: LSCINT.P

TIC Top Hit name	RT	EstConc	Units	Response	--Internal Standard--			
					#	RT	Resp	Conc
