

Data Path : Z:\VOASRV\HPCHEM1\MSVOA X\DATA\VX041020\  
 Data File : VX015626.D  
 Acq On : 10 Apr 2020 17:04  
 Operator : JC/SP  
 Sample : L2190-06  
 Misc : 5.0mL/MSVOA X/WATER  
 ALS Vial : 17 Sample Multiplier: 1

**Instrument :**  
 MSVOA\_X  
**ClientSampleId :**  
 KY062MW139-200407

Quant Time: Apr 11 02:32:04 2020  
 Quant Method : Z:\VOASRV\HPCHEM1\MSVOA\_X\METHOD\82X032720W.M  
 Quant Title : SW846 8260  
 QLast Update : Fri Mar 27 09:35:51 2020  
 Response via : Initial Calibration

Internal Standards	R.T.	QIon	Response	Conc	Units	Dev(Min)
1) Pentafluorobenzene	5.64	168	1104194	50.00	ug/l	0.00
34) 1,4-Difluorobenzene	6.84	114	1696928	50.00	ug/l	0.00
63) Chlorobenzene-d5	10.10	117	1623180	50.00	ug/l	0.00
72) 1,4-Dichlorobenzene-d4	12.06	152	888389	50.00	ug/l	0.00

System Monitoring Compounds

33) 1,2-Dichloroethane-d4	6.03	65	696017	44.69	ug/l	0.00
Spiked Amount	50.000		Recovery	=	89.38%	
35) Dibromofluoromethane	5.47	113	511355	47.14	ug/l	0.00
Spiked Amount	50.000		Recovery	=	94.28%	
50) Toluene-d8	8.70	98	2026925	50.75	ug/l	0.00
Spiked Amount	50.000		Recovery	=	101.50%	
62) 4-Bromofluorobenzene	11.12	95	876802	54.02	ug/l	0.00
Spiked Amount	50.000		Recovery	=	108.04%	

Target Compounds

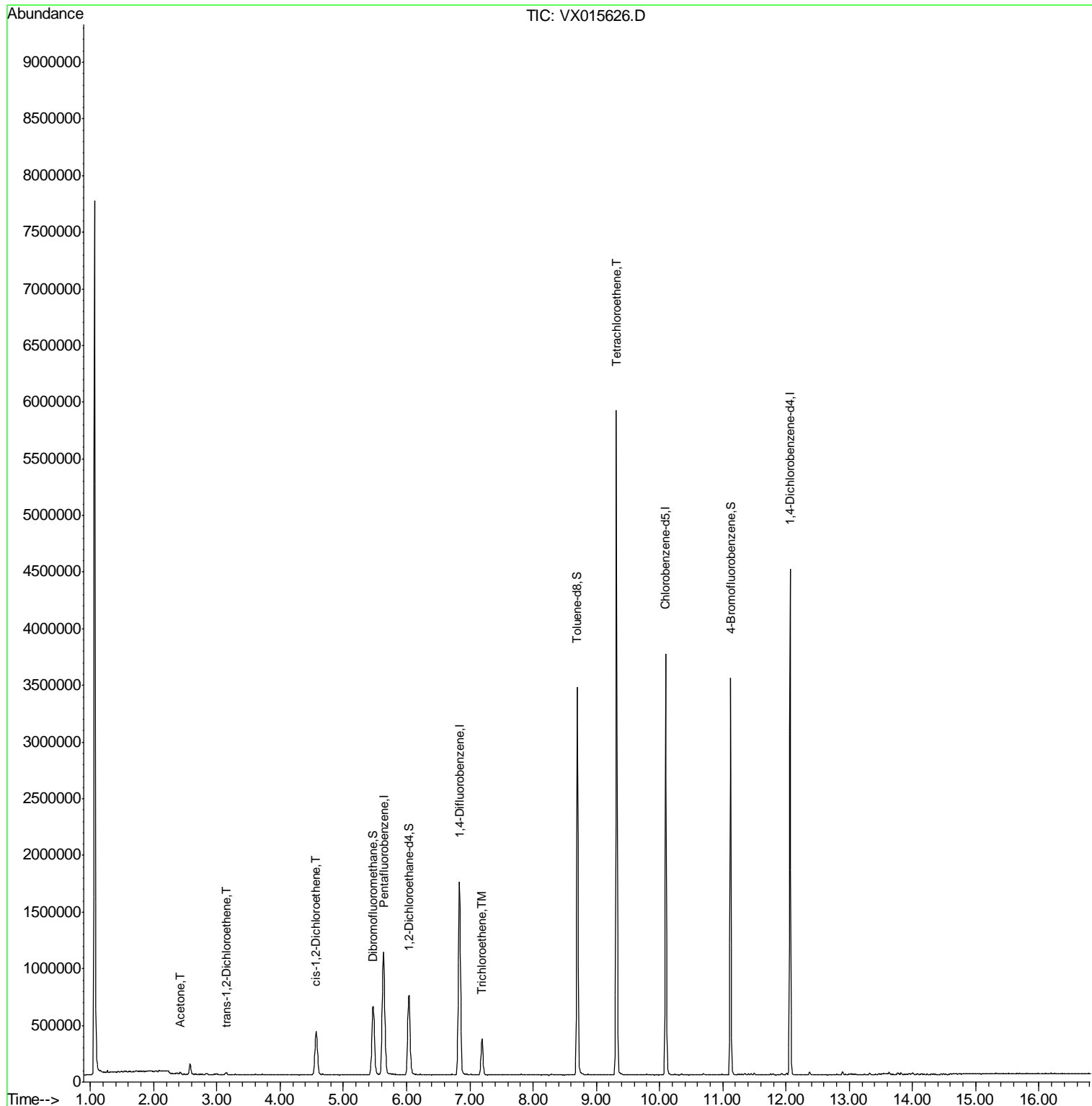
					Qvalue	
16) Acetone	2.42	43	19664	2.939	ug/l	99
21) trans-1,2-Dichloroethene	3.15	96	8689	0.751	ug/l	97
27) cis-1,2-Dichloroethene	4.57	96	244454	18.263	ug/l	91
44) Trichloroethene	7.20	130	128543	10.291	ug/l	89
64) Tetrachloroethene	9.32	164	1171922	95.669	ug/l	97

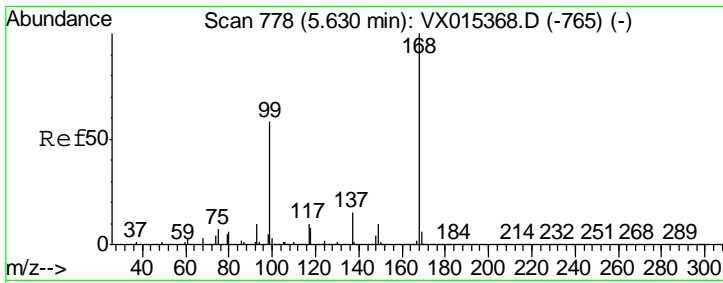
(#) = qualifier out of range (m) = manual integration (+) = signals summed

Data Path : Z:\VOASRV\HPCHEM1\MSVOA X\DATA\VX041020\  
 Data File : VX015626.D  
 Acq On : 10 Apr 2020 17:04  
 Operator : JC/SP  
 Sample : L2190-06  
 Misc : 5.0mL/MSVOA X/WATER  
 ALS Vial : 17 Sample Multiplier: 1

Instrument :  
 MSVOA\_X  
 ClientSampleId :  
 KY062MW139-200407

Quant Time: Apr 11 02:32:04 2020  
 Quant Method : Z:\VOASRV\HPCHEM1\MSVOA\_X\METHOD\82X032720W.M  
 Quant Title : SW846 8260  
 QLast Update : Fri Mar 27 09:35:51 2020  
 Response via : Initial Calibration

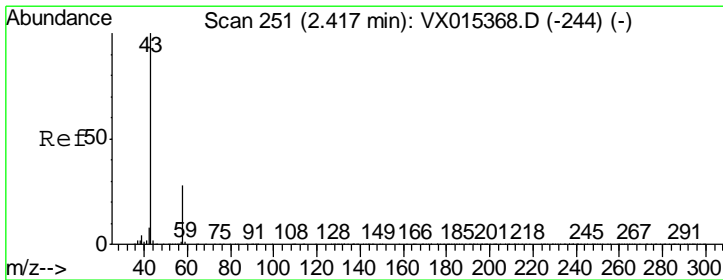
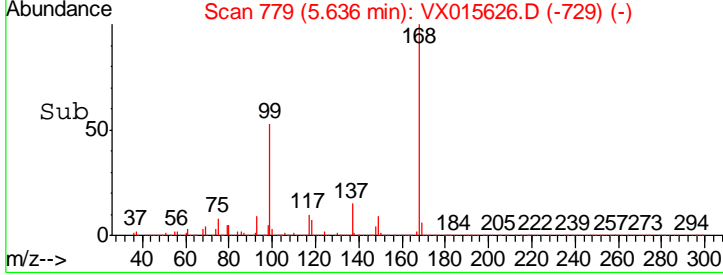
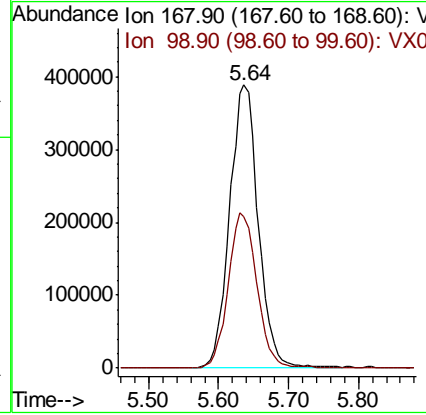
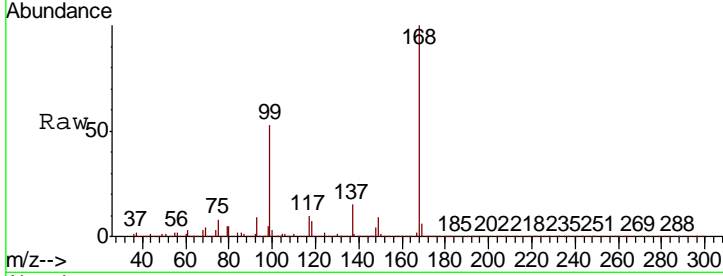




#1  
 Pentafluorobenzene  
 Concen: 50.000 ug/l  
 RT: 5.64 min Scan# 779  
 Delta R.T. 0.01 min  
 Lab File: VX015626.D  
 Acq: 10 Apr 2020 17:04

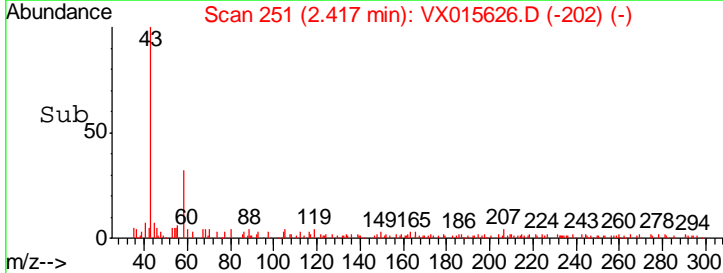
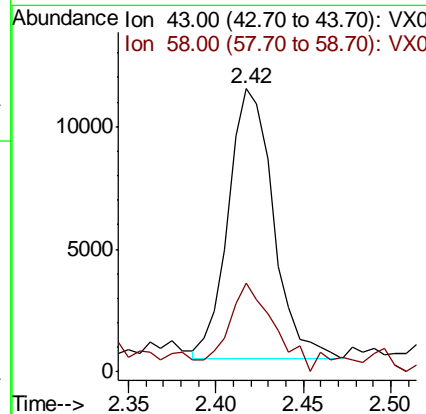
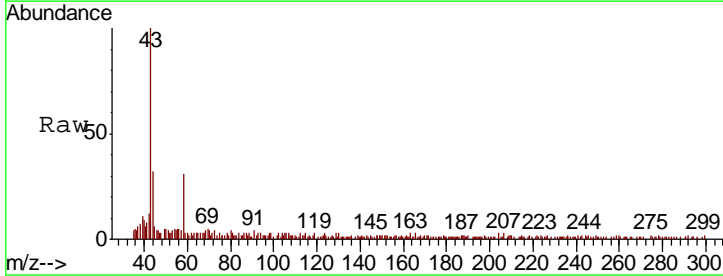
Instrument : MSVOA\_X  
 ClientSampleId : KY062MW139-200407

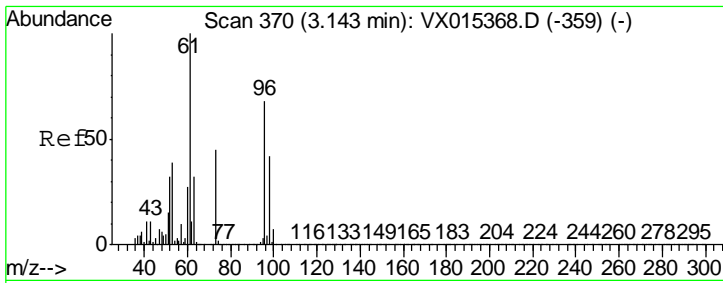
Tgt Ion	Resp	Lower	Upper
168	1104194		
99	53.3	46.4	69.6



#16  
 Acetone  
 Concen: 2.939 ug/l  
 RT: 2.42 min Scan# 251  
 Delta R.T. -0.00 min  
 Lab File: VX015626.D  
 Acq: 10 Apr 2020 17:04

Tgt Ion	Resp	Lower	Upper
43	19664		
58	28.3	22.1	33.1

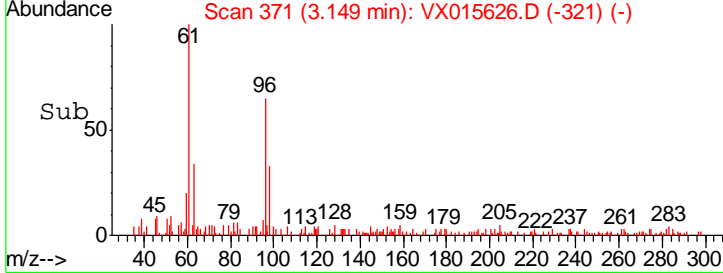
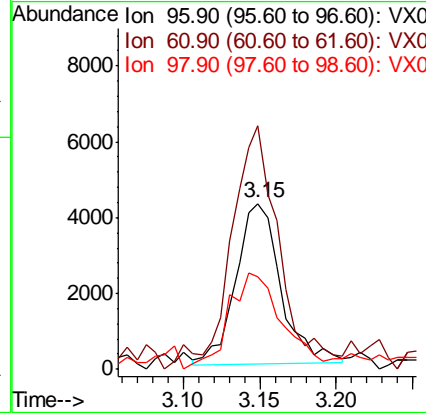
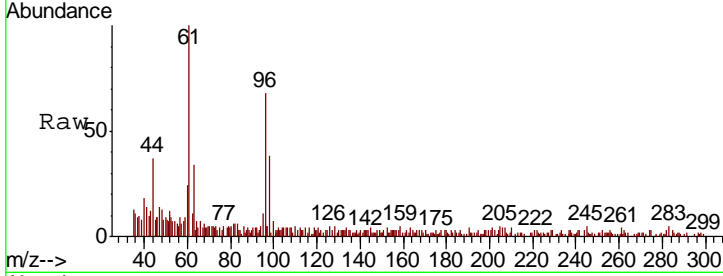




#21  
 trans-1,2-Dichloroethene  
 Concen: 0.751 ug/l  
 RT: 3.15 min Scan# 371  
 Delta R.T. 0.01 min  
 Lab File: VX015626.D  
 Acq: 10 Apr 2020 17:04

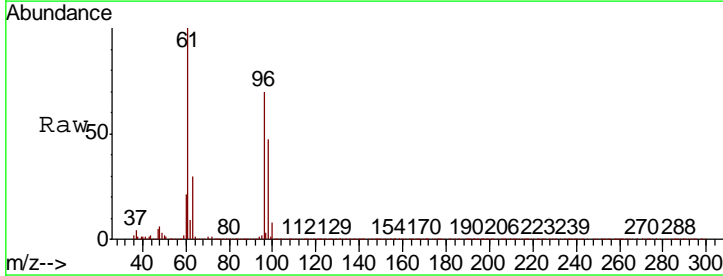
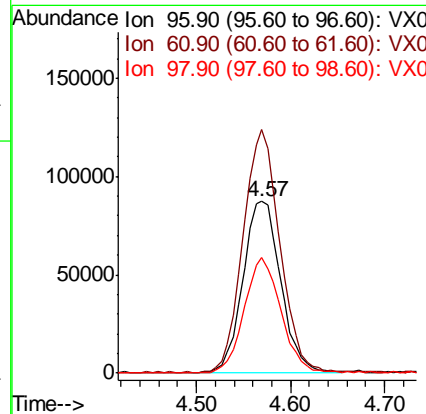
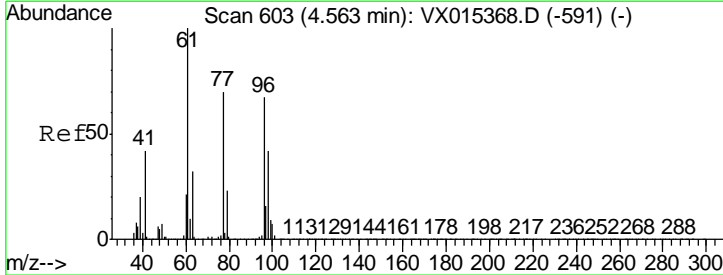
**Instrument :**  
 MSVOA\_X  
**ClientSampled :**  
 KY062MW139-200407

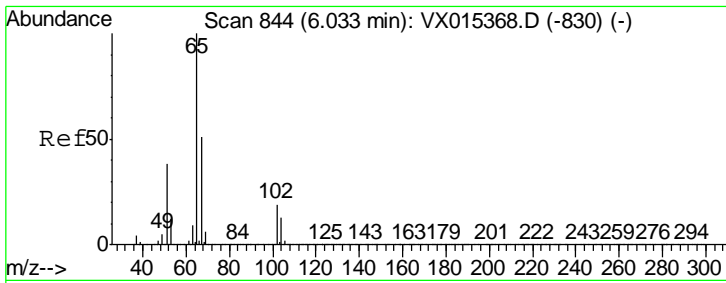
Tgt Ion	Resp	Lower	Upper
96	8689		
Ion Ratio			
96	100		
61	147.6	116.9	175.3
98	55.7	48.6	73.0



#27  
 cis-1,2-Dichloroethene  
 Concen: 18.263 ug/l  
 RT: 4.57 min Scan# 604  
 Delta R.T. 0.01 min  
 Lab File: VX015626.D  
 Acq: 10 Apr 2020 17:04

Tgt Ion	Resp	Lower	Upper
96	244454		
Ion Ratio			
96	100		
61	137.5	0.0	308.4
98	64.6	0.0	129.2

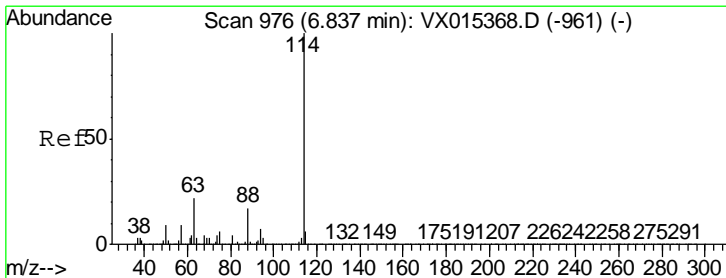
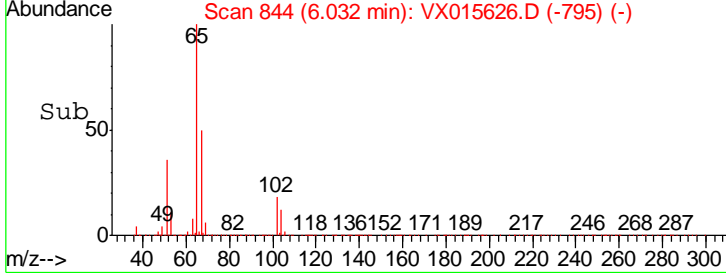
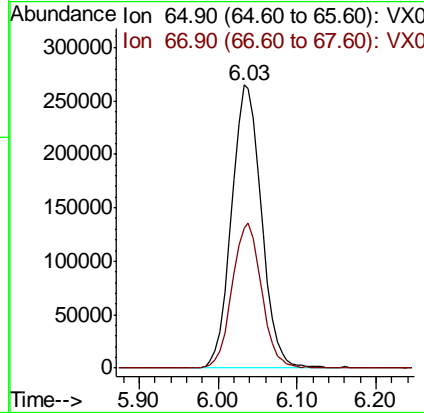
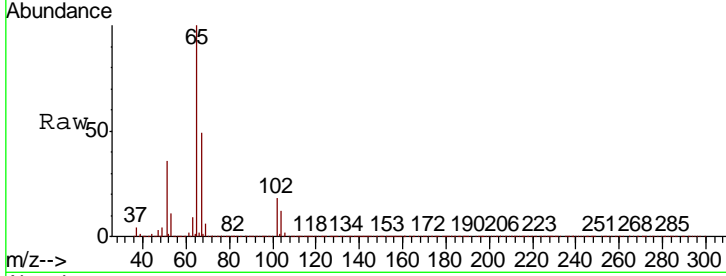




#33  
 1,2-Dichloroethane-d4  
 Concen: 44.693 ug/l  
 RT: 6.03 min Scan# 844  
 Delta R.T. -0.00 min  
 Lab File: VX015626.D  
 Acq: 10 Apr 2020 17:04

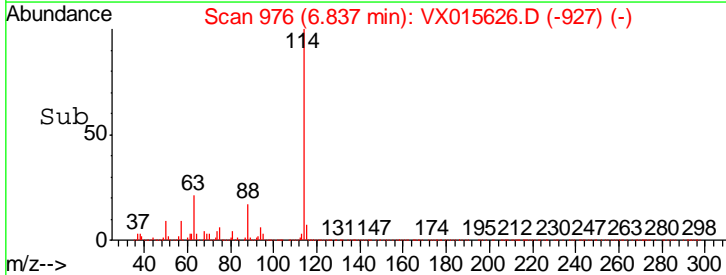
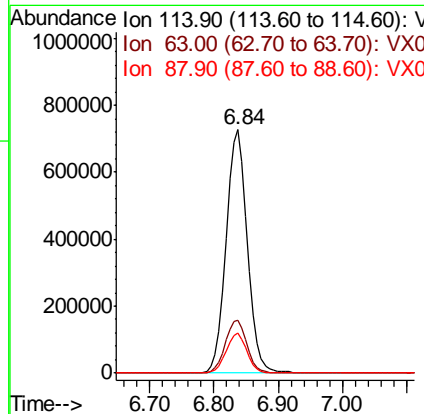
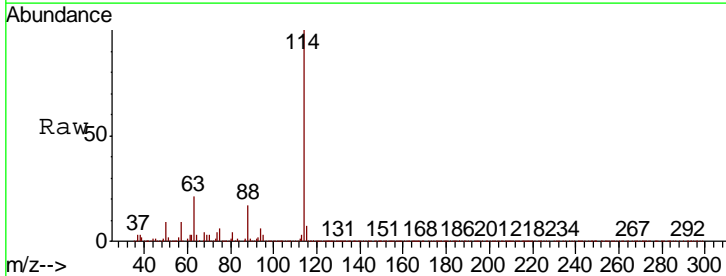
Instrument :  
 MSVOA\_X  
 ClientSampleId :  
 KY062MW139-200407

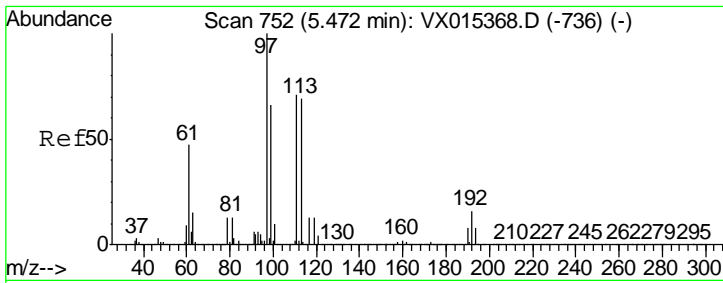
Tgt Ion	Resp	Lower	Upper
65	100		
67	50.2	0.0	102.6



#34  
 1,4-Difluorobenzene  
 Concen: 50.000 ug/l  
 RT: 6.84 min Scan# 976  
 Delta R.T. -0.00 min  
 Lab File: VX015626.D  
 Acq: 10 Apr 2020 17:04

Tgt Ion	Resp	Lower	Upper
114	100		
63	21.4	0.0	44.2
88	16.6	0.0	33.8

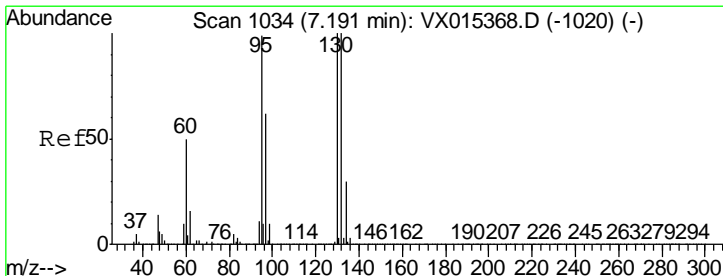
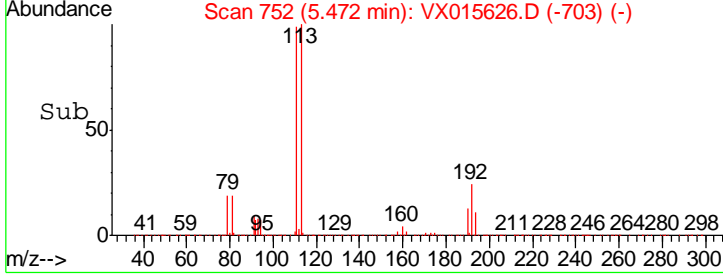
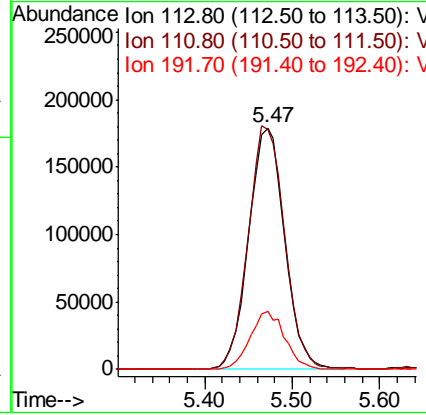
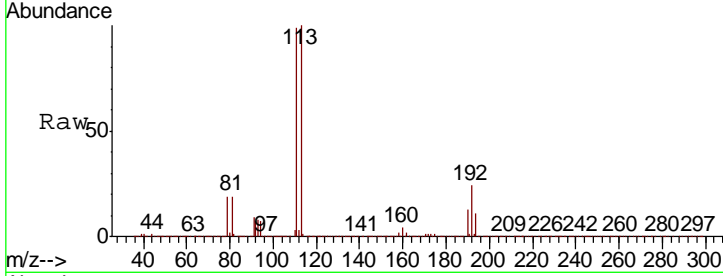




#35  
 Dibromofluoromethane  
 Concen: 47.142 ug/l  
 RT: 5.47 min Scan# 752  
 Delta R.T. -0.00 min  
 Lab File: VX015626.D  
 Acq: 10 Apr 2020 17:04

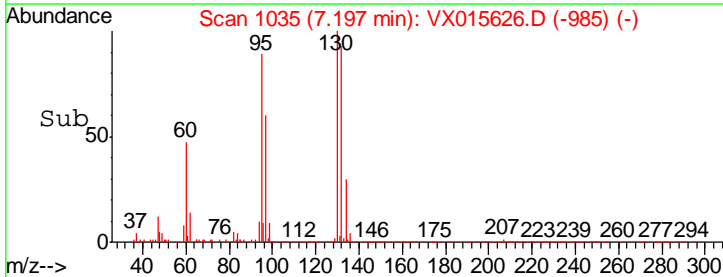
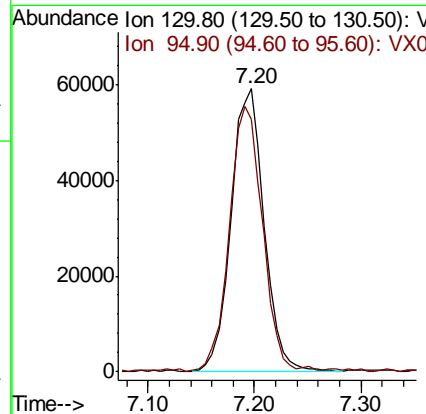
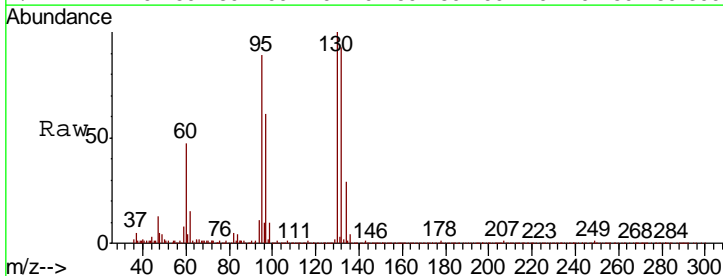
Instrument : MSVOA\_X  
 ClientSampleId : KY062MW139-200407

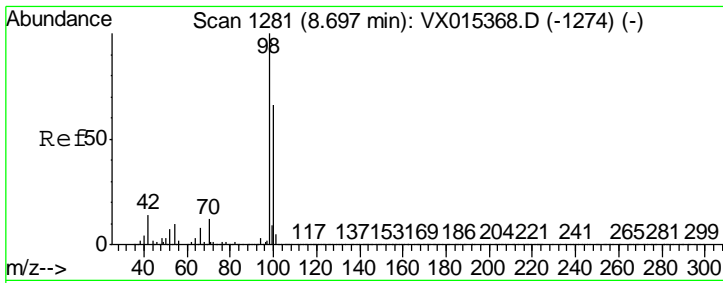
Tgt Ion	Resp	Lower	Upper
113	511355		
111	102.0	81.5	122.3
192	23.2	17.8	26.6



#44  
 Trichloroethene  
 Concen: 10.291 ug/l  
 RT: 7.20 min Scan# 1035  
 Delta R.T. 0.01 min  
 Lab File: VX015626.D  
 Acq: 10 Apr 2020 17:04

Tgt Ion	Resp	Lower	Upper
130	128543		
95	88.8	0.0	199.0

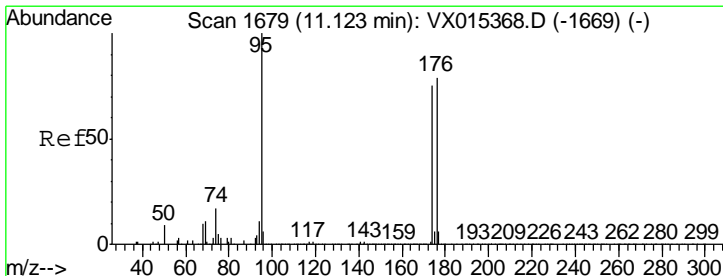
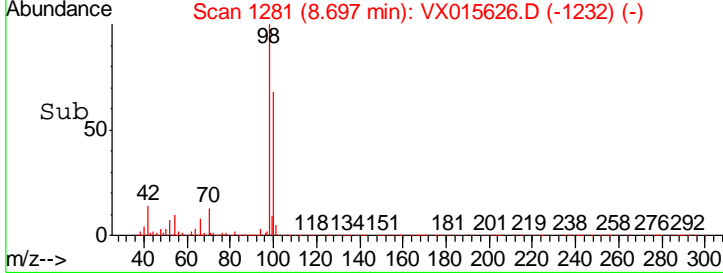
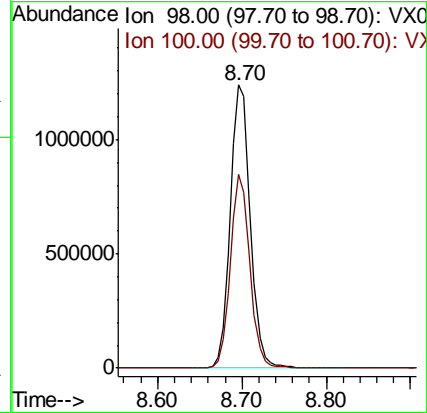
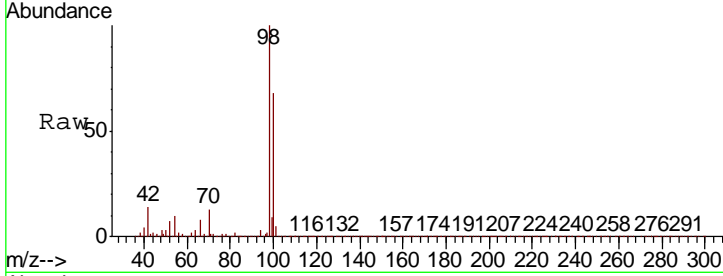




#50  
 Toluene-d8  
 Concen: 50.754 ug/l  
 RT: 8.70 min Scan# 1281  
 Delta R.T. -0.00 min  
 Lab File: VX015626.D  
 Acq: 10 Apr 2020 17:04

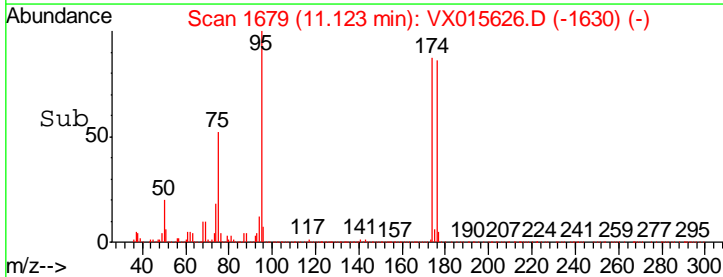
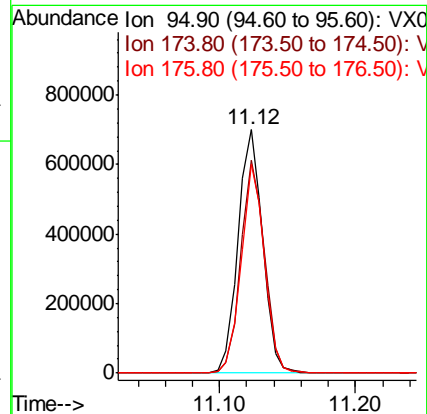
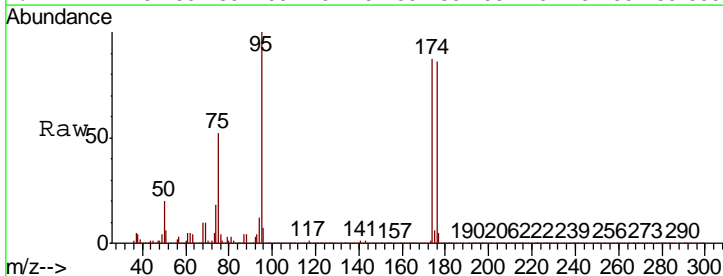
**Instrument :**  
 MSVOA\_X  
**ClientSampled :**  
 KY062MW139-200407

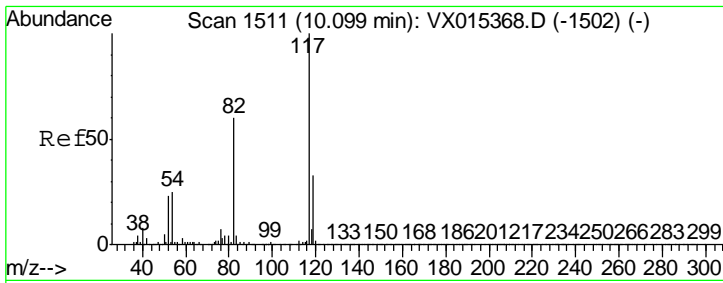
Tgt Ion	Resp	Lower	Upper
98	100		
100	66.6	53.5	80.3



#62  
 4-Bromofluorobenzene  
 Concen: 54.022 ug/l  
 RT: 11.12 min Scan# 1679  
 Delta R.T. -0.00 min  
 Lab File: VX015626.D  
 Acq: 10 Apr 2020 17:04

Tgt Ion	Resp	Lower	Upper
95	100		
174	85.1	0.0	158.6
176	81.6	0.0	159.0



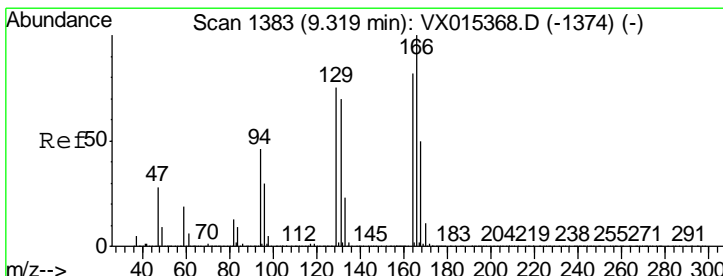
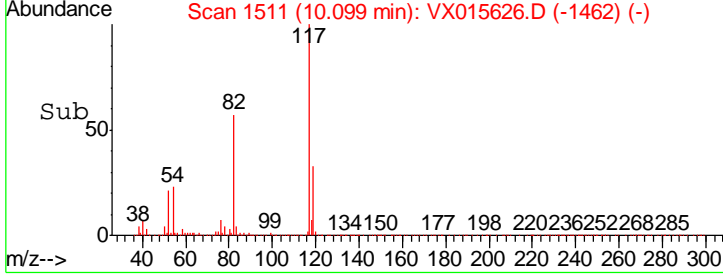
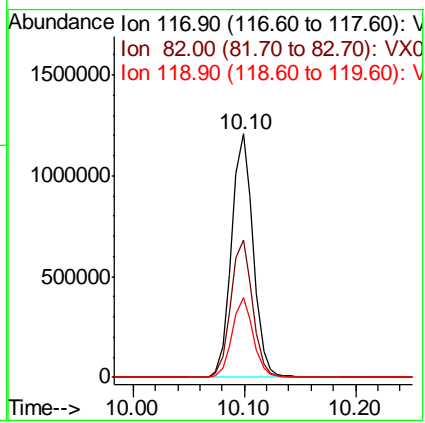
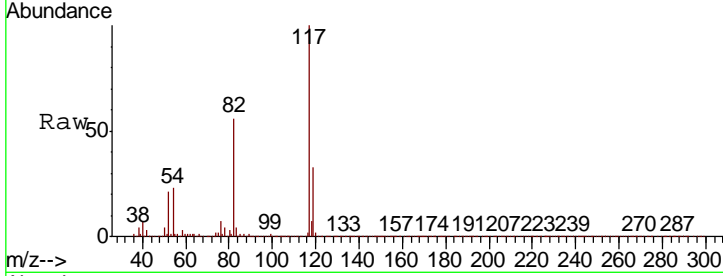


#63  
 Chlorobenzene-d5  
 Concen: 50.000 ug/l  
 RT: 10.10 min Scan# 1511  
 Delta R.T. -0.00 min  
 Lab File: VX015626.D  
 Acq: 10 Apr 2020 17:04

Instrument : MSVOA\_X  
 ClientSampled : KY062MW139-200407

Tgt Ion:117 Resp: 1623180

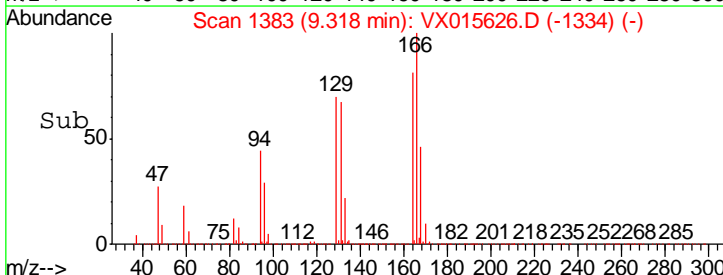
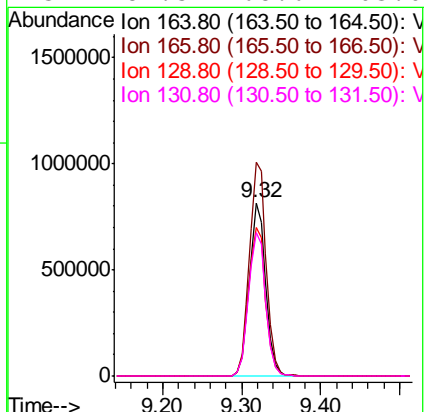
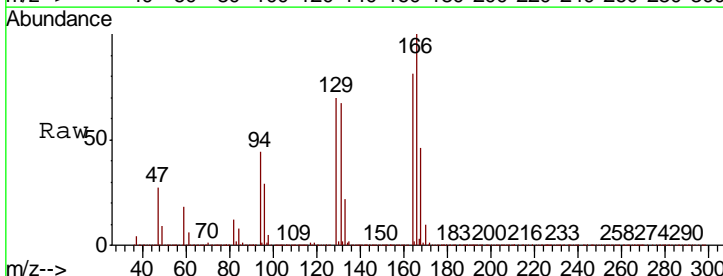
Ion	Ratio	Lower	Upper
117	100		
82	56.5	47.8	71.8
119	32.7	26.8	40.2



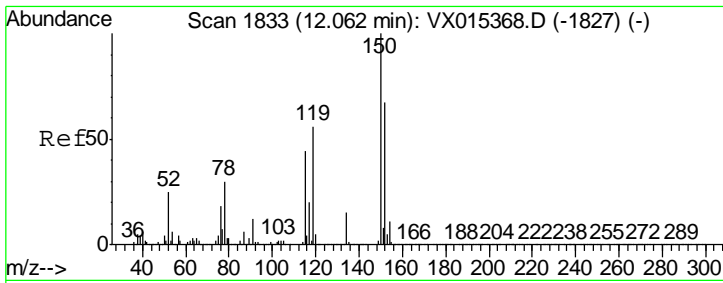
#64  
 Tetrachloroethene  
 Concen: 95.669 ug/l  
 RT: 9.32 min Scan# 1383  
 Delta R.T. -0.00 min  
 Lab File: VX015626.D  
 Acq: 10 Apr 2020 17:04

Tgt Ion:164 Resp: 1171922

Ion	Ratio	Lower	Upper
164	100		
166	123.5	97.8	146.6
129	85.8	73.0	109.4
131	82.5	68.6	103.0







#72  
 1,4-Dichlorobenzene-d4  
 Concen: 50.000 ug/l  
 RT: 12.06 min Scan# 1833  
 Delta R.T. -0.00 min  
 Lab File: VX015626.D  
 Acq: 10 Apr 2020 17:04

Instrument : MSVOA\_X  
 ClientSampled : KY062MW139-200407

Tot Ion	Resp	Lower	Upper
152	100		
115	59.0	39.0	116.9
150	160.8	0.0	340.8

